

Five Year Water Resource Development Work Program

FY 2024-2028 | Suwannee River Water Management District

Introduction

Water Management Districts (districts) are required by section 373.709, Florida Statutes (F.S.), to evaluate their water resources to ensure that existing sources of water are adequate to supply water for all existing and future reasonable-beneficial uses and to sustain the water resources and related natural systems for a 20-year planning period. A Regional Water Supply Plan (RWSP) is developed when a district determines that there are not enough traditional water supplies to provide water for all existing and future reasonable/beneficial uses and to sustain water resources and related natural systems for the planning period. RWSPs include a technical analysis of the current and future demands, evaluation of available water sources, and identification of water resource development and water supply development project options that could be used to meet future water demands.

The District is also required to prepare a Five-Year Water Resource Development Work Program (Work Program) as a part of its annual budget reporting process, pursuant to subsection 373.536(6)(a)4., F.S. The Work Program must describe the District's implementation strategy relating to its water resource development and water supply development (including alternative water supply development) components over the next five years. Further, the Work Program must:

- Address all the elements of the water resource development component in the District's approved RWSPs, as well as the water supply projects proposed for District funding and assistance;
- Identify both anticipated available District funding and additional funding needs for the second through fifth years of the funding plan;
- Identify projects in the Work Program which will provide water;
- Explain how each water resource and water supply project will produce additional water available for consumptive uses;
- Estimate the quantity of water to be produced by each project;
- Provide an assessment of the contribution of the District's RWSPs in supporting the implementation of minimum flows and minimum water levels and water reservations; and
- Ensure sufficient water is available to timely meet the water supply needs of existing and future reasonable-beneficial uses for a 1-in-10-year drought event and to avoid the adverse effects of competition for water supplies.

This Work Program covers the period from Fiscal Year (FY) 2023-2024 through FY 2027-2028 and is consistent with the planning strategies of the District's North Florida Regional Water Supply Plan (NFRWSP), a regional water supply plan produced and implemented jointly between the District and the St. Johns River Water Management District (SJRWMD) (see Figure 1). The NFRWSP was approved by both Districts in 2017 and covers the 2015-2035 planning horizon. The planning region includes all of Hamilton, Columbia, Baker, Suwannee, Union, Bradford, Gilchrist, Putnam, and Alachua counties, as well as the remaining counties in Region 1 of the SJRWMD. Work began in early 2020 to update the NFRWSP. For additional information about the NFRWSP, please see the Water Supply Plan located on the [North Florida Regional Water Supply Partnership](#) website.

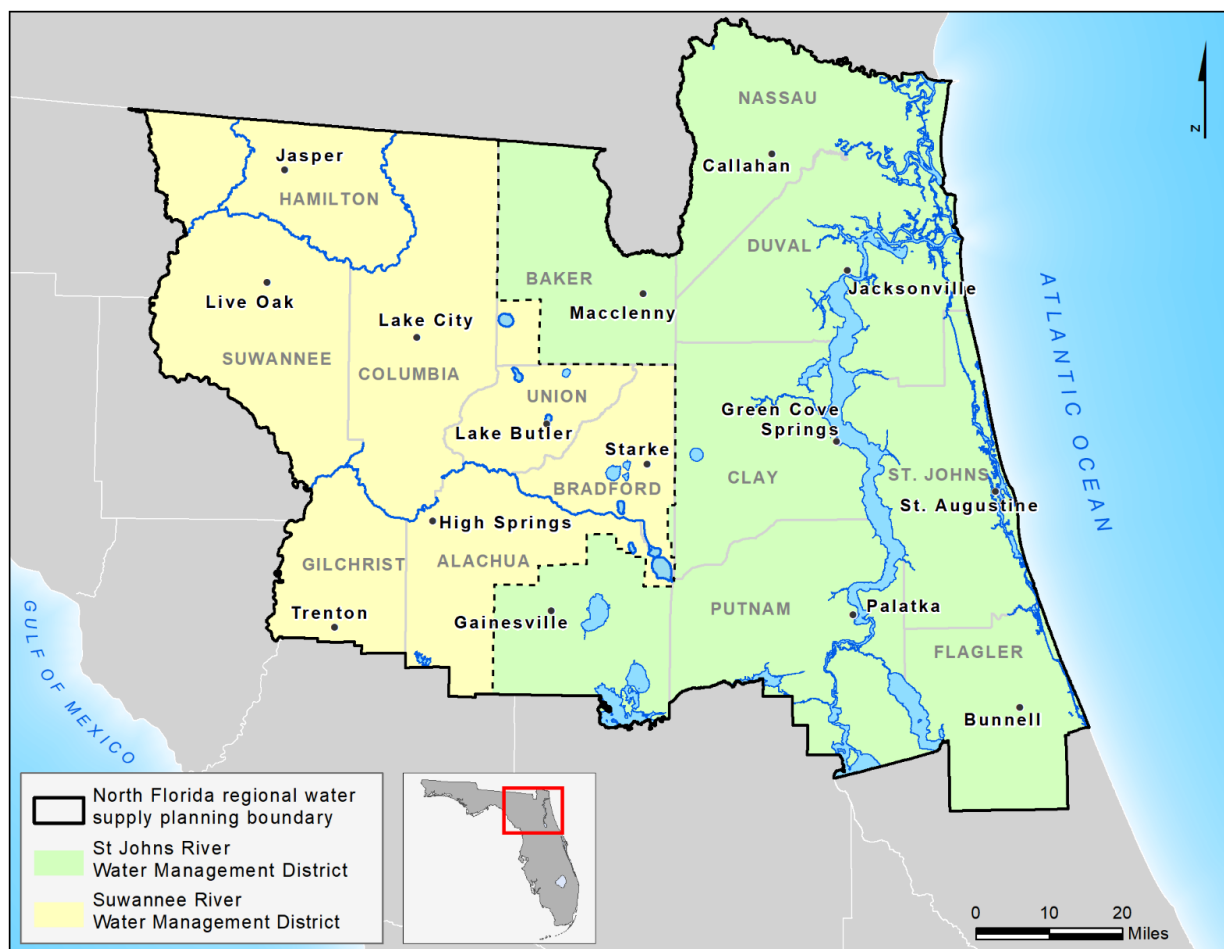


Figure 1: North Florida Regional Water Supply Plan Partnership Area

Work Program Summary

The projects listed in the Work Program demonstrate progress in implementing projects which are listed in the NFRWSP and projects which support the NFRWSP's objectives. Implementation of projects listed in the NFRWSP support the recovery strategy for the Lower Santa Fe and Ichetucknee Rivers and Associated Priority Springs (LSFI). The District believes that this work program is adequate to further the recovery of LSFI, to ensure water is available to timely meet the water supply needs of existing and future reasonable-beneficial uses for a 1-in-10 year drought event and to avoid the adverse effects of competition for water supplies based on the District's established minimum flows and minimum water levels (MFLs).

Over the next five years, the District will continue to implement projects and support regional water management programs, including water supply planning, water resource data collection and monitoring, and establishment of MFLs to ensure the availability of adequate water supplies for all reasonable-beneficial uses and to maintain the function of natural systems. This work program illustrates the contributions of the District in support of MFLs. Establishment of MFLs will proceed

according to the District's MFL Priority List. The most current version of the District's MFL priority list, and an overview of the District's MFL program is available on the District's [Minimum Flows and Minimum Water Levels](#) page of the website.

In total, this Work Program outlines projects that, upon completion, would make available 41.2 million gallons per day (mgd) of water, including reuse and non-reuse water across the District. These projects are detailed in Appendix A. These benefits are associated with approximately \$41,739,323 budgeted for FY 2023-2024. The proposed funding for projects identified in the Work Program is approximately \$33,104,915 through FY 2027-28. The District also funds water resource development activities that are regional in nature and are primarily the responsibility of the District. These activities are described in Table 1 and 2. They are also associated with approximately \$6,620,983 budgeted in FY 2023-2024.

In addition, these projects set forth a commitment to develop projects associated with implementation of MFLs. The projects benefitting MFLs are anticipated to make available 38.28 mgd of reuse and non-reuse water upon completion. Of that, up to 21.35 mgd of reuse and non-reuse water will benefit MFLs in recovery.

Water Resource and Water Supply Development Project Funding

The District funds projects that support water resource development and water supply development. Water resource development components are those that involve the “formulation and implementation of regional water resource management strategies, including the collection and evaluation of surface water and groundwater data; structural and nonstructural programs to protect and manage water resources; the development of regional water resource implementation programs; the construction, operation, and maintenance of major public works facilities to provide for flood control, surface and underground water storage, and groundwater recharge augmentation; and related technical assistance to local governments, government-owned and privately owned water utilities, and self-suppliers to the extent assistance to self-suppliers promotes the policies as set forth in section 373.016, F.S.”¹

Water supply development components are those that involve “planning, design, construction, operation, and maintenance of public or private facilities for water collection, production, treatment, transmission, or distribution for sale, resale, or end use.”²

A list of all projects meeting these statutory definitions is provided in Appendix A. The District provides funding assistance to public supply, agriculture, and other water use permittees, including industrial and commercial users, for projects that are consistent with the District's RWSP and meet the District's directive and procedures pertaining to cost-share funding.

¹ Section 373.019(24), F.S.

² Section 373.019(26), F.S.

Water Resource Development Activity Funding

The District also funds water resource development activities that are regional in nature and are therefore primarily the responsibility of the District. These water resource development activities are listed in Table 1 below; and the projected expenditures for these ongoing programs are listed in Table 2. The District has identified the need for additional Regional Water Supply Planning. These planning efforts will be ongoing for FY 2023-2024 through 2027-2028 and are reflected in the projected expenditures in Table 2.

Table 1: District water resource development activities and descriptions

Water Resource Development Activity	Activity Description
Water Supply Planning (1.1.1)	Long-term planning to assess and quantify existing and reasonably anticipated water supply needs and sources, and to maximize the beneficial use of those sources, for humans and natural systems. This includes water supply assessments developed pursuant to section 373.036, F.S., and regional water supply plans developed pursuant to section 373.709 F.S.
Minimum Flows and Minimum Water Levels (MFL, 1.1.2)	The establishment of minimum surface and ground water levels and surface water flow conditions required to protect water resources from significant harm, as determined by the district governing board.
Research, Data Collection, Analysis and Monitoring (1.2)	Activities that support district water management planning, restoration, and preservation efforts, including water quality monitoring, data collection and evaluation, and research. Data collection and analysis activities are a critical part of the water resource development component implemented by the District. This activity supports the District's MFL program.
Water Resource Development Projects (2.2.1)	Regional projects designed to create, from traditional or alternative sources, an identifiable, quantifiable supply of water for existing and/or future reasonable-beneficial uses. These projects do not include the construction of facilities for water supply development, as defined in section 373.019(21), F.S. Such projects may include the construction, operation, and maintenance of major public works facilities that provide for the augmentation of available surface and ground water supply or that create alternative sources of supply. Water resource development projects are to be identified in water management district regional water supply plans or district water management plans, as applicable.
Water Supply Development Assistance (2.2.2)	Financial assistance for regional or local water supply development projects. Such projects may include the construction of facilities included in the term "water supply development" as defined in section 373.019(26), F.S.
Other Cooperative Projects (2.4)	Any non-water source development cooperative effort under this program area between a water management district and another organization. This activity includes the District's Agricultural Conservation Cost-Share Program.

Five-Year Water Resource Development Work Program | Suwannee River Water Management District

Table 2: Fiscal year 2023-2024 through Fiscal Year 2027-2028 projected expenditures (including salaries, benefits, and operating expenses) for ongoing water resource development activities. This table does not include items listed in Appendix A or B of this work program. Except as noted below, the table estimates future year expenditures based on recurring expenses.

Regional Water Activity	Fiscal Year 2023-2024	Fiscal Year 2024-2025	Fiscal Year 2025-2026	Fiscal Year 2026-2027	Fiscal Year 2027-2028	Total
Water Supply Planning (1.1.1)	\$685,720	\$685,720	\$685,720	\$685,720	\$685,720	\$3,428,600
Minimum Flows and Minimum Water Levels (MFL, 1.1.2)	\$2,050,682	\$2,050,682	\$2,050,682	\$2,050,682	\$2,050,682	\$10,253,410
Research, Data Collection, Analysis and Monitoring (1.2)	\$3,012,675	\$3,012,675	\$3,012,675	\$3,012,675	\$3,012,675	\$15,063,375
Water Resource Development Projects (2.2.1)	\$417,382	\$417,382	\$417,382	\$417,382	\$417,382	\$2,086,910
Water Supply Development Assistance (2.2.2)	\$133,862	\$133,862	\$133,862	\$133,862	\$133,862	\$669,310
Other Cooperative Projects (2.4)	\$320,662	\$320,662	\$320,662	\$320,662	\$320,662	\$1,603,310
Total	\$6,620,983	\$6,620,983	\$6,620,983	\$6,620,983	\$6,620,983	\$33,104,915

Basin Management Action Plan Appendix

Basin Management Action Plans (BMAPs) are the “blueprint” for restoring impaired waters by reducing pollutant loadings to meet the allowable loadings established in a Total Maximum Daily Load (TMDL). In 2016, the Florida Legislature amended section 373.036, F.S., to require the identification of all specific projects that implement a BMAP or a recovery or prevention strategy in the Work Program. The District’s Work Program has historically identified water resource development projects that support MFL recovery and prevention but has not included specific descriptions of projects primarily intended to implement BMAPs. Consistent with section 373.036, F.S., and in a manner that has been coordinated with DEP and all five water management districts, the District makes available as part of this Work Program a five-year funding outlook for projects specifically identified in an adopted BMAP in Appendix B.

APPENDIX A

DEP ID	District Project Number	Project Name	Type	Short Description	Project Status	Project End date	RWSP Region Supported	Primary MFL Supported	MFL RPS Supported	Water available upon completion	Reuse available upon completion	FY2023-24	Total Project Cost
SRWS00031C	7	2015 S0905 Springs Projects: Dairy Screen Separators 06-2586-7-2400-06-06	Agricultural Conservation	Retrofit 18 screens and irrigation systems (Improved Nutrient Application in Dairy operations) with 9 local producers.	Underway	12/31/2024	SR NFRWSP	Lower Suwannee River		0.32	0.00	\$200,000.00	\$2,670,000.00
SRWS00018B	8	2016 Springs Projects LP6103C: Dairy Wastewater System Improvements 06-2586-7-2400-06-05	Other Non-Traditional Source	Contract with local producers throughout SRWMD to implement new technology to improve wastewater systems, reduce nutrient impacts, and reduce ground water usage.	Underway	12/30/2024	SR NFRWSP	Lower Suwannee River		0.14	0.00	\$300,000.00	\$1,800,000.00
SRWS00074A	33	District Cost-Share - Other Cooperative Projects Ag Cost Share 51-2586-7-2400-06-07	Agricultural Conservation	Implement conservation water conservation and nutrient reduction cost-share projects to reduce groundwater pumping and nutrient loads.	Underway	9/30/2026	SR District-wide	Middle Suwannee River		6.00	0.00	\$750,000.00	\$8,750,000.00
OT00145A	52	Hill Dam Breach analysis and permanent breach design (aka County Club Rd)	Flood Control Works	Evaluate options for an existing dam in Lake City to provide a permanent beach design.	Underway	10/28/2024	SR NFRWSP	Ichetucknee River		0.00	0.00	\$240,000.00	\$82,500.00
SRWS00036A	78	Middle Suwannee River and Springs Restoration and Aquifer Recharge	Groundwater Recharge	Complete hydrologic restoration activities to rehydrate approximately 1,500 acres of ponds, 4,000 acres of wetlands and recharge the aquifer up to an estimated 10 million gallons per day.	Design	12/31/2024	SR District outside NFRWSP	Lower Suwannee River		2.00	0.00	\$425,000.00	\$1,855,000.00
SRWS00032A	82	Oakmont GRU Phase II (Recharge Wetland)	Reclaimed Water (for groundwater recharge or natural system)	Construct a recharge wetland in western Alachua County at the Oakmont subdivision, treating both reclaimed water and stormwater.	On Hold		SR NFRWSP	Lower Santa Fe Ichetucknee Rivers	LSFIR Recovery Strategy	0.00	0.00	\$180,000.00	\$260,000.00
SRWS00058A	89	Precision Agricultural Practices 06-2586-7-2400-18-01 LP6013K	Agricultural Conservation	Implement precision management technology through cost-share programs with priority given to producers within both the BMAP and Outstanding Florida Springs areas.	Underway	6/30/2024	SR NFRWSP	Lower Santa Fe Ichetucknee Rivers	LSFIR Recovery Strategy	2.00	0.00	\$1,000,000.00	\$6,250,000.00
OT00141B	97	Starke Bypass Wetland Mitigation \$4 M	Flood Control Works	Provide mitigation offsets for the Starke truck bypass route to mitigate construction wetland impacts.	Underway	9/16/2024	SR NFRWSP			0.00	0.00	\$250,000.00	\$2,980,000.00
SRWQ00152A	102	Sustainable Suwannee Ag Pilot Program - Advanced Technology 06-2586-7-2400-06-02 LP6103D	Agricultural Conservation	Implement a pilot program for agricultural operations in Basin Management Action Plan areas to improve water quality by removing and reducing nutrients.	Underway	12/31/2024	SR District-wide			0.00	0.00	\$300,000.00	\$1,234,625.00
SRWS00082A	103	Sustainable Suwannee Ag Pilot Program - Low Input	Agricultural Conservation	Implement a pilot program for agricultural operations, landowners, counties and cities, private companies, and other entities to submit proposals to reduce water use and improve water quality by reducing and removing nutrients.	Underway	3/24/2029	SR District-wide	Lower Suwannee River		5.10	0.00	\$350,000.00	\$6,000,000.00
SRWS00084A	111	Upper Suwannee River Regional Aquifer Recharge	Groundwater Recharge	Install up to four recharge wells in the Upper Suwannee River basin in locations where wetlands were historically ditched and drained into the river to capture water during high flow conditions that occur after large rainfall.	RWSP or RPS Option Only		SR NFRWSP	Lower Suwannee River		0.00	0.00	\$0.00	\$239,512.11
SRWS00126A	210	Springs Projects 2400 (See actual projects)	Other Project Type	PLACEHOLDER - Cumulative Spring Grants Projects for fiscal year pending approval of funding.	RWSP or RPS Option Only		SR District-wide					\$1,000,000.00	\$4,580,000.00
OT00162A	211	RIVER Cost Share 2300 Budget	Surface Water	PLACEHOLDER -Cumulative RIVER Grants Projects for fiscal year pending approval of funding.	RWSP or RPS Option Only		SR District-wide					\$215,000.00	\$500,000.00
SRWS00127A	212	Springs Projects 2300 (see actual projects) Surface Water Projects TBD	Surface Water	PLACEHOLDER - Cumulative Spring Grants Projects for fiscal year pending approval of funding.	RWSP or RPS Option Only		SR District-wide					\$2,900,000.00	\$1,000,000.00
SRWS00128A	213	Springs Projects 2201 (see actual projects)	Other Project Type	PLACEHOLDER - Cumulative Spring Grants Projects for fiscal year pending approval of funding.	RWSP or RPS Option Only		SR NFRWSP					\$2,750,000.00	\$1,000,000.00
OT00163A	214	RIVER Cost Share 2400 Budget	Other Project Type	PLACEHOLDER -Cumulative RIVER Grants Projects for fiscal year pending approval of funding.	RWSP or RPS Option Only		SR District-wide					\$400,000.00	\$300,000.00
SRWS00108B	228	Accelerating Suwannee River Restoration and Silviculture Management	Agricultural Conservation	Incentivize silviculture and rural land conservation to reduce groundwater pumping and nitrogen loading in the Santa Fe and Suwannee River Basin Management Action Plan areas.	Underway	9/30/2025	SR NFRWSP	Ichetucknee Springs	LSFIR Recovery Strategy	3.03	0.00	\$750,000.00	\$2,378,736.00

APPENDIX A

DEP ID	District Project Number	Project Name	Type	Short Description	Project Status	Project End date	RWSP Region Supported	Primary MFL Supported	MFL RPS Supported	Water available upon completion	Reuse available upon completion	FY2023-24	Total Project Cost
SRWS00145A	240	Bradford County Silviculture Enhancement & Recharge Project	Groundwater Recharge	Enhance opportunities for aquifer recharge for silvicultural lands and areas with surplus surface waters.Replacing two drainage wells near Lake Sampson will also be pursued as an opportunity for additional recharge in Bradford County.	Underway	1/31/2026	SR NFRWSP	Lower Santa Fe River	LSFIR Recovery Strategy	3.00	0.00	\$1,250,000.00	\$2,000,000.00
	251	Water Resource Development Projects TBD (Regional Projects)	Other Project Type	PLACEHOLDER -Cumulative Grants Projects for fiscal year pending approval of funding.	Underway	10/1/2024	SR NFRWSP			0.00	0.00	\$0.00	\$200,000.00
SRWS00155A	253	RIVER Cost Share 2202 Budget	PS and CII Conservation	PLACEHOLDER -Cumulative RIVER Grants Projects for fiscal year pending approval of funding.	Underway		SR District-wide			0.00	0.00	\$170,000.00	\$200,000.00
SRWS00147A	255	Hamilton County Aquifer Recharge Replacement Wells and Water Quality Improvement	Groundwater Recharge	Replace two 12-inch drainage wells to provide aquifer recharge and flood protection in the Alapaha Basin.	RWSP or RPS Option Only	6/30/2025	SR District outside NFRWSP	Lower Suwannee River		2.00	0.00	\$500,000.00	\$700,000.00
SRWQ00160A	256	Acquisition DEP Grants - Springs Restoration	Other Project Type	PLACEHOLDER -Cumulative Springs Grants for fiscal year land acquisition pending approval of funding.	Underway		SR District-wide				0.00	\$2,000,000.00	\$2,200,000.00
OT00165A	258	Lower Suwannee National Wildlife Refuge	Data Collection and Evaluation	Hydrologic Restoration using RESTORE funding to protect the Lower Suwannee National Refuge.	Complete	6/30/2022	SR District outside NFRWSP	Lower Suwannee River			0.00	\$200,000.00	\$100,000.00
	259	Special Projects WRD	Other Project Type	PLACEHOLDER -Cumulative Water Resource Development Projects for fiscal year pending approval of funding.	RWSP or RPS Option Only		SR District-wide				0.00	\$200,000.00	\$100,000.00
	282	University Oaks Phase IV	PS and CII Conservation	Design, permitting, and construction of approximately 5,250 LF of 6" watermain to replace deteriorated existing infrastructure and conserve water.	Design	6/1/2025	SR District outside NFRWSP	Wacassassa River		0.02	0.00	\$300,000.00	\$316,670.00
	287	Cross City Flood Management	Stormwater	Stormwater improvements to increase flood protection in the vicinity of Ruth Raines Middle School.	Complete	4/1/2023	SR District outside NFRWSP			0.00	0.00	\$0.00	\$446,665.00
SRWS00142A	291	Dixie County Multiple Basin Aquifer Recharge (MBAR)	Groundwater Recharge	Design and construct a wetland restoration system in Dixie County to re-establish natural drainage patterns and funnel excess surface water to new and existing recharge features.	Underway	6/15/2024	SR District outside NFRWSP	Lower Suwannee River		1.10	0.00	\$1,500,000.00	\$5,942,213.43
SRWS00129B	293	Groundwater Recharge Wetland	Reclaimed Water (for groundwater recharge or natural system)	Construct a groundwater recharge wetland using reclaimed water from the Kanapaha Water Reclamation facility.	Underway	6/30/2024	SR NFRWSP	Lower Santa Fe Ichetucknee Rivers	LSFIR Recovery Strategy	0.00	1.50	\$50,000.00	\$3,000,000.00
SRWS00141A	296	Lake Butler AWT Upgrade Ph 1 and Ph 2	Reclaimed Water (for potable offset)	Completing a feasibility study, design, and permitting for construction of an advanced water treatment facility, storage surge tank, and wetland that will ultimately be used to construct a new 1.0 MGD facility for City of Lake Butler.	Underway	6/30/2025	SR NFRWSP	Lower Santa Fe River	LSFIR Recovery Strategy	0.00	0.00	\$1,000,000.00	\$3,400,000.00
SRWS00031E	300	AWS Pivot Retrofits WS002 03-2586-7-2201-37-00	Agricultural Conservation	Retrofit pivot systems with a need determined by a mobile irrigation lab evaluation in existing and proposed water resource planning areas.	Underway	6/30/2025	SR District-wide	Lower Santa Fe Ichetucknee Rivers	LSFIR Recovery Strategy	1.10	0.00	\$500,000.00	\$1,600,500.00
SRWS00140A	303	Public Supply Efficiency Improvements	PS and CII Conservation	Implement infrastructure and conservation improvements in SRWMD to reduce water loss based on water audit information.	Underway	6/30/2024	SR District-wide	Lower Santa Fe Ichetucknee Rivers	LSFIR Recovery Strategy	1.40	0.00	\$200,000.00	\$1,519,727.75
SRWS00156A	304	Alternative Water Supply Feasibility Studies	Data Collection and Evaluation (e.g., funding spent on specific feasibility studies, etc.)	Conduct AWTF analysis and feasibility studies including treatment wetlands and reclaimed water alternatives.	Underway	6/30/2024	SR District-wide	Lower Santa Fe Ichetucknee	LSFIR Recovery Strategy		0.00	\$450,000.00	\$700,000.00
	311	Mallory Swamp	Data Collection and Evaluation	Conduct data collection and model existing surface water structures in Mallory Swamp tract to develop a management plan	Underway	12/31/2024	SR District outside NFRWSP	Lower Suwannee River			0.00	\$50,000.00	\$295,947.12
	314	AWS Grants - 2201 TBD	Reclaimed Water (for potable offset)	PLACEHOLDER - Cumulative Alternative Water Supply Projects for fiscal year pending approval of funding.	Underway		SR NFRWSP				0.00	\$850,000.00	\$1,350,000.00
	315	Special Projects 2300	Surface Water	PLACEHOLDER - Cumulative Water Resource development and Alternative Water Supply Projects for fiscal year pending approval of funding	Underway		SR District-wide				0.00	\$400,000.00	\$400,000.00
	318	AWS Grants - 2300 TBD	Reclaimed Water (for groundwater recharge or natural system)	PLACEHOLDER - Cumulative Alternative Water Supply Projects for fiscal year pending approval of funding.	Underway		SR District-wide				0.00	\$2,500,000.00	\$2,500,000.00

APPENDIX A

DEP ID	District Project Number	Project Name	Type	Short Description	Project Status	Project End date	RWSP Region Supported	Primary MFL Supported	MFL RPS Supported	Water available upon completion	Reuse available upon completion	FY2023-24	Total Project Cost
	328	AWS Contractual Services - TBD	Data Collection and Evaluation	Implement a study to evaluate and purchase property near Lake Crosby for potential nutrient and recharge project potential.	Underway	1/1/2025	SR NFRWSP	Upper Santa Fe River			0.00	\$1,500,000.00	\$25,000.00
	339	Ag Team Activities/District Cost Share - SRP Shared Positions	Data Collection and Evaluation	PLACEHOLDER -Cumulative budget to provide for shared positions.	Underway		SR District-wide			0.00	0.00	\$212,000.00	\$217,000.00
	344	High Springs Water System Interconnect	PS and CII Conservation	Extend water main to conserve water in a WRCA	Complete	12/1/2022	SR NFRWSP	Lower Santa Fe Ichetucknee Rivers	LSFIR Recovery Strategy	0.02	0.00	\$0.00	\$248,000.00
	345	Potable Water Improvements - Maple St.	PS and CII Conservation	Replace aged water line to reduce water leaks	Complete	1/30/2023	SR District outside NFRWSP	Middle Suwannee River		0.00	0.00	\$0.00	\$115,596.00
	354	Hampton Water Main Loop Phase 2	PS and CII Conservation	Construct water main loops and isolation valves in Hampton's water supply to reduce water loss caused by flushing and water main breaks.	Complete	7/30/2023	SR NFRWSP	Lower Santa Fe Ichetucknee Rivers	LSFIR Recovery Strategy	0.00	0.00	\$150,000.00	\$263,800.00
	365	Dispersed Storage for Recharge and Alternative Water Supply	Stormwater	Identify storage areas for recharge and alternative water supply in the NFRWSP area.	Underway	6/30/2027	SR NFRWSP	Lower Santa Fe Ichetucknee Rivers	LSFIR Recovery Strategy	3.00	0.00	\$200,000.00	\$2,100,000.00
	366	Eco System Services	Agricultural Conservation	Program to identify and incentivize silviculture and Land management practices to increase aquifer recharge in the NFRWSP.	Underway	9/30/2037	SR NFRWSP	Lower Santa Fe Ichetucknee Rivers	LSFIR Recovery Strategy	3.00	0.00	\$200,000.00	\$2,000,000.00
	374	Cooperative Aquifer Recharge	Data Collection and Evaluation	Identify recharge locations based on water quality and quantity in the Upper Suwannee River to support the MFLs .	Underway	10/31/2024	SR District outside NFRWSP	Middle Suwannee River			0.00	\$126,191.00	\$126,191.00
	377	Groundwater Recharge Wetland - Ph III	Reclaimed Water (for groundwater recharge or natural system)	Construction of a groundwater recharge wetland using reclaimed water from the Kanapaha Water Reclamation facility.	Underway	6/30/2026	SR NFRWSP			0.00	3.00	\$4,000,000.00	\$9,200,000.00
SRWQ00007A	1729	Live Oak Reuse	Reclaimed Water (for potable offset)	Construct extensions to the Live Oak wastewater collection infrastructure and remove septic tanks which will provide additional reuse and reduce nutrient impacts.	Underway	11/30/2024	SR NFRWSP	Middle Suwannee River		0.00	0.01	\$2,500,000.00	\$3,240,000.00
	1878	Stormwater Runoff Collection in Mayo	Stormwater	Construct a stormwater pond to reduce flooding impacts and overflow into the sanitary sewer system.	Complete	3/28/2023	SR District outside NFRWSP				0.00	\$50,000.00	\$112,000.00
	2090	Lancaster Correctional Facility expansion	Reclaimed Water (for groundwater recharge or natural system)	Extend a force main from Lancaster Correctional to Fanning's WWTF to reduce nutrients and provide recharge.	Design	12/30/2025	SR District outside NFRWSP	Lower Suwannee River		0.00	0.03	\$2,500,000.00	\$2,900,000.00
	2093	Graham Farm Acquisition WSA06	Other Project Type	Fee Simple land acquisition of 441 acres to reduce nutrient loading adjacent to Olustee Creek and the Santa Fe River	Underway	12/31/2026	SR NFRWSP	Lower Santa Fe River	LSFIR Recovery Strategy	0.29	0.00	\$900,000.00	\$2,463,400.00
	2101	North Florida Mega Industrial Park	Reclaimed Water (for potable offset)	Retrofit proposed WWTF to meet AWT for future Public Access Reuse (PAR) to reduce groundwater pumping.	Construction	8/30/2025	SR NFRWSP	Ichetucknee River	LSFIR Recovery Strategy	0.00	0.25	\$1,500,000.00	\$16,579,615.00
	2444	Haines Street Drainage Improvements	Groundwater Recharge	Replacement of drainage well to include stormwater management and water quality treatment to reduce nutrients.	Design	6/30/2024	SR NFRWSP	Middle Suwannee River		0.02	0.00	\$0.00	\$301,724.00
	2668	Lawtey Water Main Replacements	PS and CII Conservation	Water main replacement in Lawtey to reduce water loss in a water resource caution area, contingent upon SRF funding.	Design		SR NFRWSP	Lower Santa Fe River	LSFIR Recovery Strategy	0.02	0.00	\$100,000.00	\$2,731,000.00
	2669	DH/DHR Water Sharing Project	Reclaimed Water (for potable offset)	Reduce groundwater pumping by connecting a shared water system at the GRU power plants to conserve 0.2 mgd.	Construction	6/30/2024	SR NFRWSP	Lower Santa Fe Ichetucknee Rivers	LSFIR Recovery Strategy	0.20	0.00	\$200,000.00	\$925,000.00
	2671	Reducing Impacts from Urban Landscapes (Water-wise)	PS and CII Conservation	Reduction of water use in landscape irrigation in the NFRWSP area.	Design	3/30/2026	SR NFRWSP	Lower Santa Fe Ichetucknee Rivers	LSFIR Recovery Strategy	0.07	0.00	\$80,000.00	\$440,000.00
	2673	Piedmont Dairy Conversion	Agricultural Conservation	Conversion from grazing to free-stall barns to reduce nutrients and water pumping in the SUWA BMAP.	Construction	9/30/2025	SR NFRWSP	Lower Santa Fe Ichetucknee Rivers	LSFIR Recovery Strategy	0.45	0.00	\$1,000,000.00	\$5,589,500.00
	2680	Archer Water Systems Improvement Project	PS and CII Conservation	Replacement of aging infrastructure to reduce water loss in the NFRWSP area.	Design			Lower Santa Fe Ichetucknee Rivers	LSFIR Recovery Strategy	0.00	0.00	\$700,000.00	\$4,828,132.00
	2760	Agricultural Springs Protection	Agricultural Conservation	District wide cost share to reduce nutrient load and water usage in BMAP and WRCA.	Underway		SR District-wide	Lower Santa Fe Ichetucknee Rivers	LSFIR Recovery Strategy	2.00	0.00	\$1,000,000.00	\$7,500,000.00
	2772	Houston Avenue Drainage Well Replacement	Stormwater	Replace 50 year old drainage well to reduce flooding and provide beneficial recharge with nutrient reduction.	RWSP or RPS Option Only	1/30/2024	SR NFRWSP	Middle Suwannee River		0.20	0.00	\$185,000.00	\$219,926.00
	2776	Oakmont Reclaimed Water Extension, Phase 5b	PS and CII Conservation	Extend reclaimed water to Phase 5b in Oakmont Subdivision to offset groundwater withdrawals for irrigation.	Construction	1/30/2024	SR NFRWSP	Lower Santa Fe Ichetucknee Rivers	LSFIR Recovery Strategy	0.00	0.01	\$40,000.00	\$166,750.00

APPENDIX A

DEP ID	District Project Number	Project Name	Type	Short Description	Project Status	Project End date	RWSP Region Supported	Primary MFL Supported	MFL RPS Supported	Water available upon completion	Reuse available upon completion	FY2023-24	Total Project Cost
	2777	Greenville Water System Filter Project	PS and CII Conservation	Replace aged filter system in Greenville's Public Water Supply to ensure potable water meets drinking water standards.	Design	1/30/2025	SR District outside NFRWSP	Aucilla River		0.00	0.00	\$190,000.00	\$752,330.00
	2967	Commercial application of Smart Soakers	Agricultural Conservation	Conduct a study to evaluate water conservation using smart soakers and conventional cooling to reduce water pumping.	Design	1/30/2025	SR District outside NFRWSP				0.00	\$216,132.00	\$489,882.00
	3033	Hampton AMR water meter installation	PS and CII Conservation	Installation of AMR meters to reduce water loss in the NFRWSP area.	Design	6/30/2024	SR NFRWSP	Lower Santa Fe Ichetucknee Rivers	LSFIR Recovery Strategy	0.01	0.00	\$60,000.00	\$175,000.00

Appendix B Basin Management Action Plan

DEP Project ID	BMAP	Lead Entity	DEP Project Number	Project Name	Project Description	Project Type	District Project Number	Project Status	Construction Completion Date	TN Reduction (lbs/yr)	Location	Acres Treated	Fiscal Year Included in 5-Year WRDWP, If Applicable	WRDWP Current FY Funding	Total State Funding	Total District Funding	Lead Entity Match	Project Total
6567	WACI	SRWMD	SRWMD-11	Fertigation	Fertigating allows the producer to split up the application of fertilizer needed to grow a crop over the entire length of a growing season.	Agricultural BMPs	4	Completed	2019	65	Springshed-Outside PFA	36.00	FY2023-24	\$0.00	\$9,000.00	\$0.00	\$3,000.00	\$12,000.00
5450	WACI	SRWMD	SRWMD-07	Fertigation	Fertigating allows the producer to split up the application of fertilizer needed to grow a crop over the entire length of a growing season.	Agricultural BMPs	4	Completed	2019	4,115	Springshed-Inside PFA	381.00	FY2023-24	\$0.00	\$25,875.00	\$7,875.00	\$11,250.00	\$45,000.00
6037	SUWA	SRWMD	SRWMD-02	Advanced Nutrient Management Through Center Pivots	Fertigation system installation and center pivot retrofits.	Agricultural BMPs	4	Underway	2025	38,310	Basinwide	780.00	FY2023-24	\$150,000.00	\$915,000.00	\$33,150.00	\$242,550.00	\$1,190,700.00
2112	SAFE	SRWMD	SRWMD-04	Dairy Wastewater Conservation and Nutrient Optimization Project	Improve the management of dairy wastewater by increasing storage pond sizes to achieve greater nutrient uptake and irrigation efficiencies. Six agreements executed to date. Canceled because project location was determined to be outside the basin.	Agricultural BMPs	6	Cancelled		0	Basinwide	0.00	FY2023-24	\$0.00	\$0.00	\$0.00	\$0.00	\$0.00
6040	SUWA	SRWMD	SRWMD-05	Dairy Wastewater Conservation and Nutrient Optimization Project	Improve the management of dairy wastewater by increasing storage pond sizes to achieve greater nutrient uptake and irrigation efficiencies. 5 projects completed.	Agricultural BMPs	6	Completed	2019	0	Basinwide	0.00	FY2023-24	\$0.00	\$920,000.00	\$298,004.00	\$417,586.00	\$1,635,590.00
5449	WACI	SRWMD	SRWMD-06	Dairy Screen Separators	Connect two pivots to the Jeffco Dairy's wastewater system and retrofit three irrigation systems to low-pressure drop nozzle sprinklers. The project will offset groundwater use with a lower quality water source and allow for better use of nutrients.	Agricultural BMPs	7	Completed	2020	575	Springshed-Inside PFA	300.00	FY2023-24	\$0.00	\$46,520.00	\$0.00	\$15,507.00	\$62,027.00
6038	SUWA	SRWMD	SRWMD-03	Improved Nutrient Application Practices in Dairy Operations - Phase 2	To date, nine agreements with dairies to install screen separators to reduce wastewater solids.	Agricultural BMPs	7	Underway	2028	40,520	Basinwide	500.00	FY2023-24	\$200,000.00	\$1,582,104.59	\$246,369.49	\$666,392.56	\$2,494,867.00
2101	SAFE	SRWMD	SRWMD-02	Improved Nutrient Application Practices in Dairy Operations - Phase 2	To date, 9 agreements with dairies to install screen separators to reduce wastewater solids. 1 agreement with a dairy in the Santa Fe Basin. DEP has allocated \$2,120,000 for districtwide program. Load reduction to land estimate of 1,485 lb-N/yr. to date	Agricultural BMPs	7	Underway	TBD	200	Basinwide	0.00	FY2023-24	\$0.00	\$309,600.00	\$0.00	\$1,094,528.31	\$1,404,128.00
2102	SAFE	SRWMD	SRWMD-03	Dairy Wastewater System Improvement	Cost-share projects with dairies to invest in advanced treatment technologies (bioreactors), additional wastewater storage, and advanced manure solid separation. Canceled because project location was determined to be outside the basin.	Dairy Remediation	8	Cancelled		0	Basinwide	0.00	FY2023-24	\$0.00	\$0.00	\$0.00	\$0.00	\$0.00
6039	SUWA	SRWMD	SRWMD-04	Dairy Wastewater System Improvement	Cost-share projects with dairies to invest in advanced treatment technologies (bioreactors), additional wastewater storage, and advanced manure solid separation.	Agricultural BMPs	8	Underway	2024	4,265	Basinwide	400.00	FY2023-24	\$300,000.00	\$1,500,000.00	\$0.00	\$300,000.00	\$1,800,000.00
6014	SUWA	City of Live Oak	LO-03	Live Oak 49/90 Lift Station Improvements	Install a mixer in the lift station to eliminate sewage spills and improve water quality.	Sanitary Sewer and Wastewater Treatment Facility (WWTF) Maintenance	9	Completed	2017	0	Middle Suwannee River Springshed-Inside PFA	NA	FY2023-24	\$0.00	\$0.00	\$12,690.00	\$2,673.30	\$15,363.30
6005	SUWA	Town of Branford	BRAN-02	Branford Wastewater Effluent Pond Failure Repairs	Replace effluent pond at WWTP with tanks.	Sanitary Sewer and Wastewater Treatment Facility (WWTF) Maintenance	12	Completed	2018	0	Middle Suwannee River Springshed-Inside PFA	NA	FY2023-24	\$0.00	\$599,433.00	\$231,500.00	\$137,368.00	\$968,301.00
6006	SUWA	City of Chiefland	CH-01	Biosolids Treatment Unit Replacement	Reconstruct the City's aged biosolids treatment unit (digester). The project includes two new tanks and other equipment to better treat the biosolids.	Sanitary Sewer and Wastewater Treatment Facility (WWTF) Maintenance	18	Completed	2018	0	Lower Suwannee River Springshed-Inside PFA	NA	FY2023-24	\$0.00	\$376,560.00	\$0.00	\$145,263.00	\$521,823.00
6022	SUWA	Dixie County	DC-02	Cow Pond Drainage Basin Aquifer Recharge Project	Re-establish Natural drainage patterns and use natural recharge features and aquifer recharge wells to restore approx. 300 acres of sand ponds and rehydrate approx. 1,750 acres of wetlands while conserving 1.69 MGD of water and support spring flow.	Hydrologic Restoration	28	Completed	2018	0	Surface Waters Only	2,050.00	FY2023-24	\$0.00	\$313,382.08	\$50,000.00	\$50,000.00	\$413,382.08
6608	WACI	SRWMD	SRWMD-10	District Cost Share	Best Management Practices cost share including but not limited to soil moisture probes, irrigation retrofits or upgrades, alternative water supply, centralized control systems not covered under DEP grants.	Agricultural BMPs	33	Underway	2025	913	Springshed-Outside PFA	116.00	FY2023-24	\$75,000.00	\$0.00	\$3,800.00	\$3,420.00	\$7,220.00
2127	SAFE	Columbia County	CC-04	Dream Inn Motel WWTP Closure	Remove the noncompliant WWTP that serves the motel and connect to the county's sewer system. This also includes relocating, upgrading, and enlarging the county WWTF to handle flow. Estimated load reduction to land surface of 1,000 lb-N/yr.	WWTF Upgrade	35	Completed	2018	49	Devil's Complex Springshed-Outside PFA	NA	FY2023-24	\$0.00	\$1,000,000.00	\$144,300.00	\$505,700.00	\$1,650,000.00

Appendix B Basin Management Action Plan

DEP Project ID	BMAP	Lead Entity	DEP Project Number	Project Name	Project Description	Project Type	District Project Number	Project Status	Construction Completion Date	TN Reduction (lbs/yr)	Location	Acres Treated	Fiscal Year Included in 5-Year WRDWP, If Applicable	WRDWP Current FY Funding	Total State Funding	Total District Funding	Lead Entity Match	Project Total
6007	SUWA	City of Fanning Springs	FS-01	Fanning Springs Water Quality Improvement Project, Phase I	Expansion of wastewater collection and transmission system to convert septic to sewer in Areas 1-4 (65 septic systems).	OSTDS Phase Out	39	Completed	2015	691	Lower Suwannee River Springshed-Inside PFA	NA	FY2023-24	\$0.00	\$792,960.00	\$121,440.00	\$662,000.00	\$1,576,400.00
6008	SUWA	City of Fanning Springs	FS-02	Fanning Springs Water Quality Improvement Project, Phase II	Expansion of wastewater collection and transmission system to convert septic to sewer in Area 10 (60 septic systems).	OSTDS Phase Out	40	Completed	2018	638	Lower Suwannee River Springshed-Inside PFA	NA	FY2023-24	\$0.00	\$2,000,000.00	\$120,000.00	\$0.00	\$2,120,000.00
6009	SUWA	City of Fanning Springs	FS-03	Fanning Springs Water Quality Improvement Project, Phase III	Expansion of wastewater collection and transmission system to convert 198 septic systems to sewer in Areas 5-9.	OSTDS Phase Out	41	Completed	2018	2,105	Lower Suwannee River Springshed-Inside PFA	NA	FY2023-24	\$0.00	\$3,355,100.00	\$0.00	\$40,000.00	\$3,395,100.00
2133	SAFE	City of High Springs	HS-02	Wastewater Collection System Extension - Phase A1	Provide central sewer to remaining areas served by septic systems. Elimination of 132 septic systems. Reduction estimate to land surface of 2,640 lb-N/yr.	OSTDS Phase Out	50	Completed	2019	1,292	Surface Waters Only	NA	FY2023-24	\$0.00	\$2,890,772.26	\$0.00	\$125,000.00	\$3,015,772.26
2130	SAFE	City of Archer	AR-01	Holly Hills Stormwater Improvements	Increase storage within existing stormwater ponds to alleviate flooding and improve water quality.	Stormwater System Upgrade	54	Completed	2018	0	Devil's Complex Springshed-Outside PFA	0.00	FY2023-24	\$0.00	\$0.00	\$83,000.00	\$5,420.00	\$88,420.00
6020	SUWA	City of Trenton	T-02	Trenton Lift Station #7 Rehabilitation	Rehabilitate existing lift station.	Sanitary Sewer and Wastewater Treatment Facility (WWTF) Maintenance	69	Completed	2017	0	Lower Suwannee River Springshed-Inside PFA	NA	FY2023-24	\$0.00	\$620,135.00	\$150,000.00	\$0.00	\$770,135.00
6021	SUWA	Dixie County	DC-01	Lower Suwannee River Springs Restoration and Aquifer Recharge	Restore ~500 acres of sand ponds and rehydrate ~1,250 acres of wetlands by re-establishing natural flow and an aquifer recharge well. Conserving ~3.26 mgd in water supporting water supply and spring flow of Fanning Springs and the Lower Suwannee River.	Hydrologic Restoration	74	Completed	2018	0	Lower Suwannee River Springshed-Inside PFA	1,750.00	FY2023-24	\$0.00	\$587,404.49	\$106,359.00	\$63,359.00	\$757,122.49
6034	SUWA	City of Madison	MC-01	Madison Blue Spring Aquifer Recharge	Rehabilitate or replace up to six existing drainage wells to improve aquifer recharge rates. Wells will have upgraded pretreatment which may include BAM or constructed wetlands.	Biosorption Activated Media (BAM)	75	Completed	2020	0	Withlacoochee Springshed-Inside PFA	NA	FY2023-24	\$0.00	\$8,287.00	\$0.00	\$0.00	\$8,287.00
6045	SUWA	SRWMD	SRWMD-10	Middle Suwannee River Springs Restoration and Aquifer Recharge Project	Installation of hydraulic structures in southeast Lafayette and northeast Dixie counties restoring natural water drainage patterns. The project will recharge the aquifer with ~ 10 mgd of water over ~ 1,500 acres of ponds and 4,000 acres of wetlands.	Hydrologic Restoration	78	Underway	2024	0	Basinwide	5,500.00	FY2023-24	\$0.00	\$1,548,000.00	\$277,000.00	\$30,000.00	\$1,855,000.00