

Five Year Water Resource Development Work Program

FY 2022-2026 | Suwannee River Water Management District

Introduction

Water Management Districts are required by section 373.709, Florida Statutes (F.S.), to evaluate their water resources to ensure that existing sources of water are adequate to supply water for all existing and future reasonable-beneficial uses and to sustain the water resources and related natural systems for a 20-year planning period. A Regional Water Supply Plan (RWSP) is developed when a District determines that there are not enough traditional water supplies to provide water for all existing and future reasonable/beneficial uses and to sustain water resources and related natural systems for the planning period. RWSPs include a technical analysis of the current and future demands, evaluation of available water sources, and identification of water resource development and water supply development project options that could be used to meet future water demands.

The District is also required to prepare a Five-Year Water Resource Development Work Program (Work Program) as a part of its annual budget reporting process, pursuant to subsection 373.536(6)(a)4., F.S. The Work Program must describe the District's implementation strategy relating to its water resource development and water supply development (including alternative water supply development) components over the next five years. Further, the Work Program must:

- Address all the elements of the water resource development component in the District's approved RWSPs, as well as the water supply projects proposed for District funding and assistance;
- Identify both anticipated available District funding and additional funding needs for the second through fifth years of the funding plan;
- Identify projects in the Work Program which will provide water;
- Explain how each water resource and water supply project will produce additional water available for consumptive uses;
- Estimate the quantity of water to be produced by each project;
- Provide an assessment of the contribution of the District's RWSPs in supporting the implementation of minimum flows and minimum water levels and water reservations; and
- Ensure sufficient water is available to timely meet the water supply needs of existing and future reasonable-beneficial uses for a 1-in-10-year drought event and to avoid the adverse effects of competition for water supplies.

This Work Program covers the period from Fiscal Year (FY) 2021-2022 through FY 2025-2026 and is consistent with the planning strategies of the District's North Florida Regional Water Supply Plan, (NFRWSP), a regional water supply plan produced and implemented jointly between this District and the SJRWMD (see Figure 1). The NFRWSP was approved by both Districts in 2017 and covers the 2015-2035 planning horizon. The next plan update is scheduled for 2022. The planning region includes all of Hamilton, Columbia, Baker, Suwannee, Union, Bradford, Gilchrist, Putnam, and Alachua Counties, as well as the remaining counties in Region 1 of the SJRWMD. For additional information about the NFRWSP, please see the Water Supply Plan located on the [North Florida Regional Water Supply Partnership](#) website.

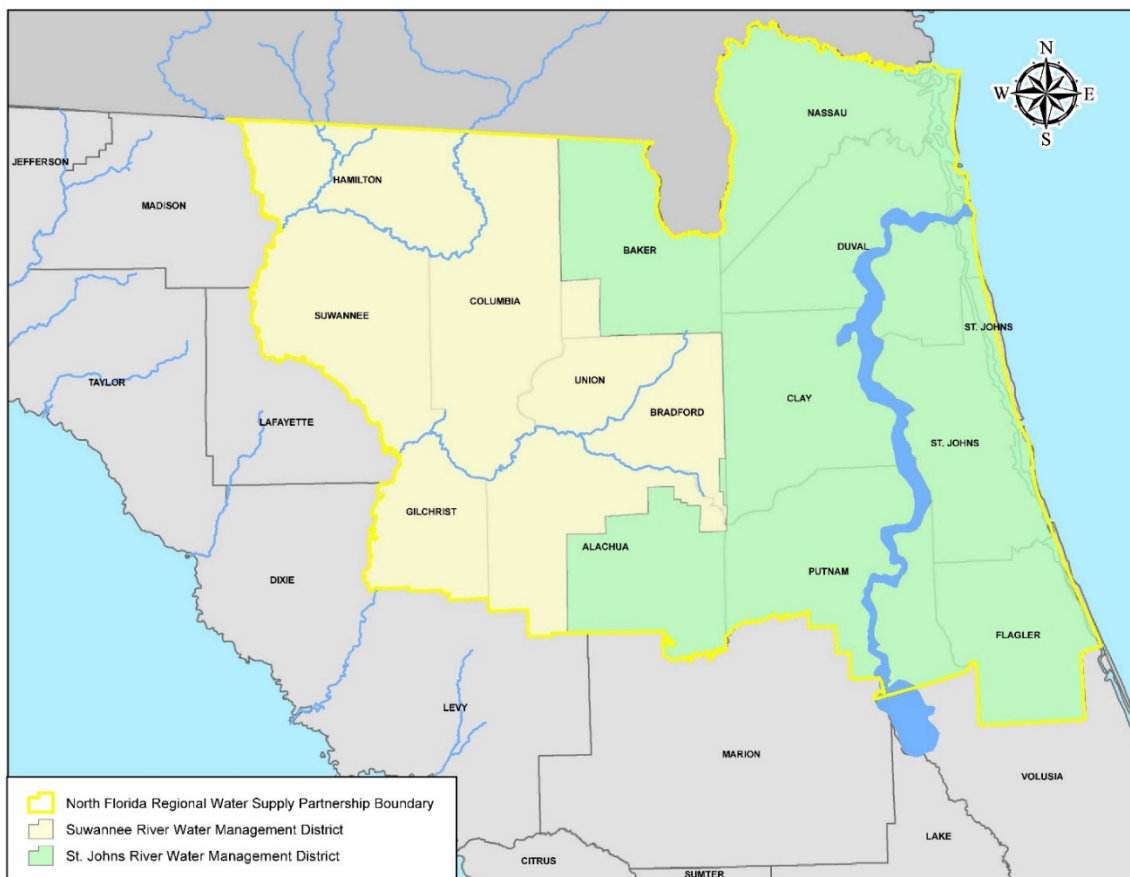


Figure 1: North Florida Regional Water Supply Plan Partnership Area

Work Program Summary

The projects listed in the Five-Year Water Resource Development Work Program demonstrate progress in implementing projects which are listed in the NFRWSP and projects which support the NFRWSP's objectives. Implementation of projects listed in the NFRWSP supports the recovery strategy for the Lower Santa Fe and Ichetucknee Rivers and Associated Priority Springs (LSFI). The District believes that this work program is adequate to further the recovery of LSFI, to ensure water is available to timely meet the water supply needs of existing and future reasonable-beneficial uses for a 1-in-10 year drought event and to avoid the adverse effects of competition for water supplies based on the District's established minimum flows and minimum water levels (MFLs).

Over the next five years, the District will continue to implement projects and support regional water management programs, including water supply planning, water resource data collection and monitoring, and establishment of MFLs to ensure the availability of adequate water supplies for all reasonable-beneficial uses and to maintain the function of natural systems. This work program illustrates the contributions of the District in support of MFLs. Establishment of MFLs will proceed

according to the District's MFL Priority List. The most current version of the District's MFL priority list, and an overview of the District's MFL program is available on the District's [Minimum Flows and Minimum Water Levels](#) page of the website.

In total, this Work Program outlines projects that, upon completion, would make available 28.14 million gallons per day (mgd) of water, including reuse and non-reuse water across the District. These projects are detailed in Appendix A. These benefits are associated with approximately \$9,411,670 budgeted for FY 2021-2022. The proposed funding for projects identified in the 5-year Work Program is approximately \$30,563,670 through FY 2025-26. The District also funds Water Resource Development Activities that are regional in nature and are therefore primarily the responsibility of the District. These activities are described in Table 1 and 2. They are also associated with approximately \$6,230,102 budgeted in FY 2021-2022.

In addition, these projects set forth a commitment to develop projects associated with implementation of MFLs. The projects benefitting MFLs are anticipated to make available 27.7 mgd of reuse and non-reuse water upon completion. Of that, up to 17.45 mgd of reuse and non-reuse water will benefit MFLs in recovery.

Water Resource and Water Supply Development Project Funding

The District funds projects that support water resource development and water supply development. Water resource development components are those that involve the “formulation and implementation of regional water resource management strategies, including the collection and evaluation of surface water and groundwater data; structural and nonstructural programs to protect and manage water resources; the development of regional water resource implementation programs; the construction, operation, and maintenance of major public works facilities to provide for flood control, surface and underground water storage, and groundwater recharge augmentation; and related technical assistance to local governments, government-owned and privately owned water utilities, and self-suppliers to the extent assistance to self-suppliers promotes the policies as set forth in section 373.016, F.S.”¹ Water supply development components are those that involve “planning, design, construction, operation, and maintenance of public or private facilities for water collection, production, treatment, transmission, or distribution for sale, resale, or end use.”² A list of all projects meeting these statutory definitions is provided in Appendix A. The District provides funding assistance to public supply, agriculture, and other water use permittees, including industrial and commercial users, for projects that are consistent with the District's RWSP and meet the District's directive and procedures pertaining to cost-share funding.

¹ Section 373.019(24), F.S.

² Section 373.019(26), F.S.

Water Resource Development Activity Funding

The District also funds Water Resource Development Activities that are regional in nature and are therefore primarily the responsibility of the District. These Water Resource Development Activities are listed in Table 1 below; and the projected expenditures for these ongoing programs are listed in Table 2. The District has identified the need for additional Regional Water Supply Planning. These planning efforts will be ongoing for FY 2021-2022 through 2025-2026 and are reflected in the projected expenditures in Table 2.

Table 1: District water resource development activities and descriptions

Water Resource Development Activity	Activity Description
Water Supply Planning (1.1.1)	Long-term planning to assess and quantify existing and reasonably anticipated water supply needs and sources, and to maximize the beneficial use of those sources, for humans and natural systems. This includes water supply assessments developed pursuant to section 373.036, F.S., and regional water supply plans developed pursuant to section 373.709 F.S.
Minimum Flows and Minimum Water Levels (MFL, 1.1.2)	The establishment of minimum surface and ground water levels and surface water flow conditions required to protect water resources from significant harm, as determined by the district governing board.
Research, Data Collection, Analysis and Monitoring (1.2)	Activities that support district water management planning, restoration, and preservation efforts, including water quality monitoring, data collection and evaluation, and research. Data collection and analysis activities are a critical part of the water resource development component implemented by the District. This activity supports the District's MFL program.
Water Resource Development Projects (2.2.1)	Regional projects designed to create, from traditional or alternative sources, an identifiable, quantifiable supply of water for existing and/or future reasonable-beneficial uses. These projects do not include the construction of facilities for water supply development, as defined in section 373.019(21), F.S. Such projects may include the construction, operation, and maintenance of major public works facilities that provide for the augmentation of available surface and ground water supply or that create alternative sources of supply. Water resource development projects are to be identified in water management district regional water supply plans or district water management plans, as applicable.
Water Supply Development Assistance (2.2.2)	Financial assistance for regional or local water supply development projects. Such projects may include the construction of facilities included in the term "water supply development" as defined in section 373.019(26), F.S.
Other Cooperative Projects (2.4)	Any non-water source development cooperative effort under this program area between a water management district and another organization. This activity includes the District's Agricultural Conservation Cost-Share Program.

Table 2: Fiscal year 2021-2022 through Fiscal Year 2025-2026 projected expenditures (including salaries, benefits, and operating expenses) for ongoing water resource development activities. This table does not include items listed in Appendix A or B of this work program. Except as noted below, the table estimates future year expenditures based on recurring expenses.

Regional Water Activity	Fiscal Year 2021-2022	Fiscal Year 2022-2023	Fiscal Year 2023-2024	Fiscal Year 2024-2025	Fiscal Year 2025-2026	Total
Water Supply Planning (1.1.1)	\$645,234	\$645,234	\$645,234	\$645,234	\$645,234	\$3,226,170
Minimum Flows and Minimum Water Levels (MFL, 1.1.2)	\$2,125,664	\$2,125,664	\$2,125,664	\$2,125,664	\$2,125,664	\$10,628,320
Research, Data Collection, Analysis and Monitoring (1.2)	\$2,736,152	\$2,736,152	\$2,736,152	\$2,736,152	\$2,736,152	\$13,682,260
Water Resource Development Projects (2.2.1)	\$394,441	\$394,441	\$394,441	\$394,441	\$394,441	\$1,972,205
Water Supply Development Assistance (2.2.2)	\$90,524	\$90,524	\$90,524	\$90,524	\$90,524	\$452,620
Other Cooperative Projects (2.4)	\$237,787	\$237,787	\$237,787	\$237,787	\$237,787	\$1,188,945
Total	\$6,230,102	\$6,230,102	\$6,230,102	\$6,230,102	\$6,230,102	\$31,150,520

Basin Management Action Plan Appendix

Basin Management Action Plans are the “blueprint” for restoring impaired waters by reducing pollutant loadings to meet the allowable loadings established in a Total Maximum Daily Load (TMDL). In 2016, the Florida Legislature amended section 373.036, F.S., to require the identification of all specific projects that implement a Basin Management Action Plan (BMAP) or a recovery or prevention strategy in the Work Program. The District’s Work Program has historically identified water resource development projects that support MFL recovery and prevention but has not included specific descriptions of projects primarily intended to implement BMAPs. Consistent with section 373.036, F.S., and in a manner that has been coordinated with DEP and all five water management Districts, the District makes available as part of this Work Program a five-year funding outlook for projects specifically identified in an adopted BMAP in Appendix B.

Appendix A

DEP ID	Type	District Project Number	Project Name	Short Description	Project Status	Project End Date	RWSP Region Supported	Primary MFL Supported	Water Available upon Completion (MGD)	Reuse upon Completion (MGD)	FY2021-22	Total Project Cost
	Other Project Type	251	RIVER Water Resource Development Projects TBD (Regional Projects)	PLACEHOLDER -Cumulative RIVER Grants Projects for fiscal year pending approval of funding.	On Hold	9/30/2022	SR NFRWSP				\$200,000.00	\$200,000.00
	PS and CII Conservation	282	University Oaks Phase IV	Design, permitting, and construction of approximately 5,250 LF of 6" watermain to replace deteriorated existing infrastructure and conserve water.	Design	12/1/2022	SR District outside NFRWSP		0.44		\$311,670.00	\$316,670.00
	Stormwater	287	Cross City Flood Management	Stormwater improvements to increase flood protection in the vicinity of Ruth Raines Middle School.	Design	4/30/2023	SR District outside NFRWSP				\$200,000.00	\$446,665.00
	Data Collection and Evaluation	311	Mallory Swamp	Conduct data collection and model existing surface water structures in Mallory Swamp tract to develop a management plan	Construction/Underway	12/31/2024	SR District outside NFRWSP	Lower Suwannee River			\$170,000.00	\$295,947.12
	Other Project Type	313	Water Sustainability Trust Fund - TBD	PLACEHOLDER - Cumulative Water Protection and Sustainability Projects for fiscal year pending approval of funding	Construction/Underway	9/15/2022	SR NFRWSP				\$180,000.00	\$280,000.00
	Reclaimed Water (for potable offset)	314	AWS Grants - 2201 TBD	PLACEHOLDER - Cumulative Alternative Water Supply Projects for fiscal year pending approval of funding.	On Hold		SR NFRWSP				\$1,350,000.00	\$1,350,000.00
	Surface Water	315	Special Projects 2300	PLACEHOLDER - Cumulative Water Resource development and Alternative Water Supply Projects for fiscal year pending approval of funding	On Hold		SR District-wide				\$200,000.00	\$400,000.00
	Reclaimed Water (for groundwater recharge or natural system)	318	AWS Grants - 2300 TBD	PLACEHOLDER - Cumulative Alternative Water Supply Projects for fiscal year pending approval of funding.	On Hold		SR District-wide				\$1,500,000.00	\$1,500,000.00
	Data Collection and Evaluation	328	Lake Crosby / Roberts Property Acquisition and Study	Implement a study to evaluate and purchase property near Lake Crosby for potential nutrient and recharge project potential.	Complete	1/1/2023	SR NFRWSP	Upper Santa Fe River			\$500,000.00	\$500,000.00
	Data Collection and Evaluation	339	Ag Team Activities/District Cost Share - SRP Shared Positions	PLACEHOLDER -Cumulative budget to provide for shared positions.	Construction/Underway						\$217,000.00	\$157,000.00
	Stormwater	1878	Stormwater Runoff Collection in Mayo	Construct a stormwater pond to reduce flooding impacts and overflow into the sanitary sewer system.	Construction/Underway	3/28/2023					\$50,000.00	\$112,000.00
	Stormwater	1880	SE Old County Camp Road Madison Co	Obtain easements to increase storage capacity during high water events and reduce flood impacts.	Complete	7/1/2021					\$100,000.00	\$100,000.00
SROT00141B	Flood Control Works	97	Starke Bypass Wetland Mitigation \$4 M	Provide mitigation offsets for the Starke truck bypass route to mitigate construction wetland impacts.	Construction/Underway	9/16/2021					\$300,000.00	\$2,980,000.00
SROT00145A	Flood Control Works	52	Hill Dam Breach analysis and permanent breach design (aka County Club Rd)	Evaluate options for an existing dam in Lake City to provide a permanent beach design.	Construction/Underway	10/28/2021					\$240,000.00	\$82,500.00
SROT00162A	Surface Water	211	RIVER Cost Share 2300 Budget	PLACEHOLDER -Cumulative RIVER Grants Projects for fiscal year pending approval of funding.	On Hold		SR District-wide				\$300,000.00	\$500,000.00
SROT00163A	Other Project Type	214	RIVER Cost Share 2400 Budget	PLACEHOLDER -Cumulative RIVER Grants Projects for fiscal year pending approval of funding.	On Hold		SR District-wide				\$300,000.00	\$300,000.00
SROT00164A	Data Collection and Evaluation	257	Alligator Creek Study - Bradford County Flood Protection	Implement a feasibility study in Bradford County to provide flood protection and storage near Alligator Creek during peak flows.	Construction/Underway	4/24/2023	SR NFRWSP	Upper Santa Fe River			\$1,000,000.00	\$350,000.00
SROT00165A	Data Collection and Evaluation	258	Lower Suwannee National Wildlife Refuge	Hydrologic Restoration using RESTORE funding to protect the Lower Suwannee National Refuge.	Construction/Underway	6/30/2022	SR District outside NFRWSP	Lower Suwannee River			\$100,000.00	\$100,000.00
SRWQ00007A	Reclaimed Water (for potable offset)	1729	Live Oak Reuse	Construct extensions to the Live Oak wastewater collection infrastructure and remove septic tanks which will provide additional reuse and reduce nutrient impacts.	Design	11/30/2022		Middle Suwannee River		0.01	\$2,015,000.00	\$3,240,000.00
SRWQ00146A	Groundwater Recharge	80	Mill Creek Sink (RIVER Agreement with City of Alachua)	Purchase land adjacent to Mill Creek Sink to implement a stormwater treatment system to reduce nutrient impacts.	Construction/Underway	6/1/2022	SR NFRWSP				\$650,000.00	\$2,045,898.61
SRWQ00152A	Agricultural Conservation	102	Sustainable Suwannee Ag Pilot Program - Advanced Technology 06-2586-7-2400-06-02 LP6103D	Implement a pilot program for agricultural operations in Basin Management Action Plan areas to improve water quality by removing and reducing nutrients.	Construction/Underway	3/30/2022	SR District-wide				\$250,000.00	\$1,234,625.00

Appendix A

DEP ID	Type	District Project Number	Project Name	Short Description	Project Status	Project End Date	RWSP Region Supported	Primary MFL Supported	Water Available upon Completion (MGD)	Reuse upon Completion (MGD)	FY2021-22	Total Project Cost
SRWQ00160A	Other Project Type	256	Acquisition DEP Grants - Springs Restoration	PLACEHOLDER -Cumulative Springs Grants for fiscal year land acquisition pending approval of funding.	On Hold		SR District-wide				\$2,000,000.00	\$2,200,000.00
SRWS00018B	Other Non-Traditional Source	8	2016 Springs Projects LP6103C: Dairy Wastewater System Improvements 06-2586-7-2400-06-05	Contract with local producers throughout SRWMD to implement new technology to improve wastewater systems, reduce nutrient impacts, and reduce ground water usage.	Construction/Underway	10/31/2023	SR NFRWSP	Lower Suwannee River	0.14		\$500,000.00	\$1,800,000.00
SRWS00031C	Agricultural Conservation	7	2015 S0905 Springs Projects: Dairy Screen Separators 06-2586-7-2400-06-06	Retrofit 18 screens and irrigation systems (Improved Nutrient Application in Dairy operations) with 9 local producers.	Construction/Underway	6/30/2022	SR NFRWSP	Lower Suwannee River	0.32		\$150,000.00	\$2,670,000.00
SRWS00031E	Agricultural Conservation	300	AWS Pivot Retrofits WS002 03-2586-7-2201-37-00	Retrofit pivot systems with a need determined by a mobile irrigation lab evaluation in existing and proposed water resource planning areas.	Construction/Underway	6/30/2022	SR District-wide	Lower Santa Fe Ichetucknee Rivers	1.10		\$250,000.00	\$556,000.00
SRWS00032A	Reclaimed Water (for groundwater recharge or natural system)	82	Oakmont GRU Phase II (Recharge Wetland)	Construct a recharge wetland in western Alachua County at the Oakmont subdivision, treating both reclaimed water and stormwater.	On Hold		SR NFRWSP	Lower Santa Fe Ichetucknee Rivers			\$180,000.00	\$260,000.00
SRWS00058A	Agricultural Conservation	89	Precision Agricultural Practices 06-2586-7-2400-18-01 LP6013K	Implement precision management technology through cost-share programs with priority given to producers within both the BMAP and Outstanding Florida Springs areas.	Construction/Underway	6/30/2024	SR NFRWSP	Lower Santa Fe Ichetucknee Rivers	2.00		\$1,000,000.00	\$6,250,000.00
SRWS00074A	Agricultural Conservation	33	District Cost-Share - Other Cooperative Projects Ag Cost Share 51-2586-7-2400-06-07	Implement conservation water conservation and nutrient reduction cost-share projects to reduce groundwater pumping and nutrient loads.	Construction/Underway	9/30/2024	SR District-wide	Middle Suwannee River	6.00		\$1,500,000.00	\$2,000,000.00
SRWS00082A	Agricultural Conservation	103	Sustainable Suwannee Ag Pilot Program - Low Input	Implement a pilot program for agricultural operations, landowners, counties and cities, private companies, and other entities to submit proposals to reduce water use and improve water quality by reducing and removing nutrients.	Construction/Underway	6/30/2026	SR District-wide	Lower Suwannee River	5.10	0.00	\$300,000.00	\$4,219,439.90
SRWS00084A	Groundwater Recharge	111	Upper Suwannee River Regional Aquifer Recharge	Install up to four recharge wells in the Upper Suwannee River basin in locations where wetlands were historically ditched and drained into the river to capture water during high flow conditions that occur after large rainfall.	Construction/Underway	6/30/2023	SR NFRWSP	Lower Suwannee River	1.00		\$750,000.00	\$2,500,000.00
SRWS00108B	Agricultural Conservation	228	Accelerating Suwannee River Restoration and Silviculture Management	Incentivize silviculture and rural land conservation to reduce groundwater pumping and nitrogen loading in the Santa Fe and Suwannee River Basin Management Action Plan areas.	Construction/Underway	9/30/2025	SR NFRWSP	Ichetucknee Springs	3.03		\$750,000.00	\$2,378,736.00
SRWS00124A	Stormwater	206	Gwen Lake	Address stormwater, flooding, erosion, and sedimentation concerns that impair the water quality and water storage capacity of Gwen Lake and adjacent waterways within the City of Lake City.	Construction/Underway	9/28/2021	SR Portion of NFRWSP	Ichetucknee Springs			\$30,000.00	\$450,000.00
SRWS00126A	Other Project Type	210	Springs Projects 2400 (See actual projects)	PLACEHOLDER - Cumulative Spring Grants Projects for fiscal year pending approval of funding.	On Hold		SR District-wide				\$1,000,000.00	\$4,580,000.00
SRWS00127A	Surface Water	212	Springs Projects 2300 (see actual projects) Surface Water Projects TBD	PLACEHOLDER - Cumulative Spring Grants Projects for fiscal year pending approval of funding.	On Hold		SR District-wide				\$5,000,000.00	\$5,000,000.00
SRWS00128A	Other Project Type	213	Springs Projects 2201 (see actual projects)	PLACEHOLDER - Cumulative Spring Grants Projects for fiscal year pending approval of funding.	On Hold		SR NFRWSP				\$1,000,000.00	\$1,000,000.00
SRWS00129B	Reclaimed Water (for groundwater recharge or natural system)	293	Groundwater Recharge Wetland	Construct a groundwater recharge wetland using reclaimed water from the Kanapaha Water Reclamation facility.	Construction/Underway	6/30/2024	SR NFRWSP	Lower Santa Fe Ichetucknee Rivers	1.50		\$500,000.00	\$3,000,000.00
SRWS00140A	PS and CII Conservation	303	Public Supply Efficiency Improvements	Implement infrastructure and conservation improvements in SRWMD to reduce water loss based on water audit information.	Construction/Underway	6/30/2023	SR District-wide	Lower Santa Fe Ichetucknee Rivers	1.40		\$500,000.00	\$1,000,000.00
SRWS00141A	Reclaimed Water (for potable offset)	296	Lake Butler AWT Upgrade Ph 1 and Ph 2	Completing a feasibility study, design, and permitting for construction of an advanced water treatment facility, storage surge tank, and wetland that will ultimately be used to construct a new 1.0 MGD facility for City of Lake Butler.	Construction/Underway	6/30/2025	SR NFRWSP	Lower Santa Fe River			\$1,420,000.00	\$3,400,000.00

Appendix A

DEP ID	Type	District Project Number	Project Name	Short Description	Project Status	Project End Date	RWSP Region Supported	Primary MFL Supported	Water Available upon Completion (MGD)	Reuse upon Completion (MGD)	FY2021-22	Total Project Cost
SRWS00142A	Groundwater Recharge	291	Dixie County Multiple Basin Aquifer Recharge (MBAR)	Design and construct a wetland restoration system in Dixie County to re-establish natural drainage patterns and funnel excess surface water to new and existing recharge features.	Design	2/1/2024	SR District outside NFRWSP	Lower Suwannee River	1.10		\$1,000,000.00	\$3,143,000.00
SRWS00145A	Groundwater Recharge	240	Bradford County Silviculture Enhancement & Recharge Project	Enhance opportunities for aquifer recharge for silvicultural lands and areas with surplus surface waters, and replace two drainage wells near Lake Sampson will also be pursued as an opportunity for additional recharge in Bradford County.	Design	6/30/2023	SR NFRWSP	Lower Santa Fe River	3.00		\$1,400,000.00	\$2,000,000.00
SRWS00159A	Groundwater Recharge	255	Hamilton County Aquifer Recharge Replacement Wells and Water Quality Improvement	Replace two 12-inch drainage wells to provide aquifer recharge and flood protection in the Alapaha Basin.	On Hold		SR District outside NFRWSP	Lower Suwannee River	2.00		\$500,000.00	\$700,000.00
SRWS00161A	PS and CII Conservation	253	RIVER Cost Share 2202 Budget	PLACEHOLDER -Cumulative RIVER Grants Projects for fiscal year pending approval of funding.	On Hold		SR District-wide				\$200,000.00	\$200,000.00
SRWS00162A	Data Collection and Evaluation (e.g., funding spent on specific feasibility studies, etc.)	304	Alternative Water Supply Feasibility Studies	Conduct AWTF analysis and feasibility studies including treatment wetlands and reclaimed water alternatives.	Construction/Underway	6/30/2024	SR District-wide	Lower Santa Fe Ichetucknee			\$500,000.00	\$700,000.00

Appendix B. Basin Management Action Plan

DEP Project ID	BMAP	Lead Entity	Partners	DEP Project Number	Project Name	Project Description	Project Type	District Project Number	Project Status	Construction Completion Date	TN Reduction (lbs/yr)	Location	Fiscal Year Included in 5-Year WRDWP, If Applicable	WRDWP Current FY Funding	Total State Funding	Total District Funding	Lead Entity Match	Project Total
5784	SAFE	ACEPD	City of Gainesville/ FDOT District 2/ SRWMD/SJRWMD	AC-33	Turf Swap	Rebates to property owners that convert irrigated turf to FFL or implement water saving irrigation retrofits.	Education Efforts	303	Underway	6/30/2023	N/A	Alachua County	FY2020-21 through FY2021-22	\$500,000.00	\$1,000,000.00	\$0.00	\$0.00	\$1,000,000.00
2129	SAFE	City of Alachua	DEP/ SRWMD	AL-01	Mill Creek Sink Water Quality Improvement Project	Purchase property to install water quality BMPs to reduce pollutant loads discharging directly into the sink. Nutrient loading should be reduced by 66 % and benefit Hornsby Spring.	BMP Treatment Train	80	Underway	6/1/2022	TBD	Alachua County		\$650,000.00	\$1,645,898.61	\$400,000.00	\$0.00	\$2,045,898.61
5470	SAFE	City of Newberry	SRWMD	NEW-02	Canterbury Fairgrounds Wastewater Extension Project	Extend central wastewater lines to Canterbury Fairgrounds site and decommission the existing OSTDS.	OSTDS Phase Out	1877	Complete	9/30/2021	354	Alachua County		\$50,000.00	\$0.00	\$200,000.00	\$0.00	\$200,000.00
2101	SAFE	SRWMD	DEP/ Dairy Producers	SRWMD-02	Improved Nutrient Application Practices in Dairy Operations - Phase 2	To date, 9 agreements with dairies to install screen separators to reduce wastewater solids. 1 agreement with a dairy in the Santa Fe Basin. DEP has allocated \$2,120,000 for districtwide program. Load reduction to land estimate of 1,485 lb-N/yr.	Agricultural BMPs	7	Underway	6/30/2022	200	Basinwide	FY2019-20 through FY2021-22	\$150,000.00	\$2,120,000.00	\$20,000.00	\$530,000.00	\$2,670,000.00
2102	SAFE	SRWMD	DEP/ Dairy Producers	SRWMD-03	Dairy Wastewater System Improvement	Cost-share projects with dairies to invest in advanced treatment technologies (bioreactors), additional wastewater storage, and advanced manure solid separation. Canceled because project location was determined to be outside the basin.	Dairy Remediation	8	Underway	10/31/2023	N/A	N/A	FY2018-19 through FY2021-22	\$500,000.00	\$1,500,000.00	\$0.00	\$300,000.00	\$1,800,000.00
2103	SAFE	SRWMD	DEP/ Agricultural Producers/ Local Governments/ Landowners/ Private Companies	SRWMD-05	Sustainable Suwannee Springs Agriculture Pilot Program - Low Input Agriculture	Operators submit proposals for less intensive cropping, changing the type, or changing fallow or native landscape land use for a certain amount of time or a permanent conservation easement. Load reduction to land estimate of 187,500 lb-N/yr.	Agricultural BMPs	103	Underway	6/30/2026	33,750	Basinwide	FY2018-19 through FY2021-22	\$300,000.00	\$4,219,439.90	\$0.00	\$0.00	\$4,219,439.90
2092	SAFE	SRWMD	DEP/ Agricultural Producers/ Local Governments/ Landowners/ Private Companies	SRWMD-06	Sustainable Suwannee Springs Agriculture Pilot Program - Advanced Water Quality Improvement Technologies	Agriculture operators, landowners, local governments, private companies, other entities may submit proposals for advanced technologies that can cost-effectively reduce nitrogen in groundwater that contributes to spring flow.	Agricultural BMPs	102	Underway	3/30/2022	1,832	Basinwide		\$250,000.00	\$999,998.25	\$0.00	\$234,626.75	\$1,234,625.00
2107	SAFE	SRWMD	Agricultural Producers	SRWMD-08	Precision Agricultural Practices	Provide cost-share funds to agricultural producers to implement precision nutrient and irrigation management technology. Districtwide program benefits split between Santa Fe and Suwannee BMAPs. Load reduction to land estimate of 312,500 lb-N/yr.	Agricultural BMPs	89	Underway	6/30/2024	56,250	Basinwide	FY2018-19 through FY2021-22	\$1,000,000.00	\$5,000,000.00	\$0.00	\$1,250,000.00	\$6,250,000.00
4565	SAFE	SRWMD	DEP/ Agricultural Producers	SRWMD-10	Precision Ag 2	Provide cost share funds to agricultural producers within the PFA and BMAP to reduce nutrients and conserve water.	Agricultural BMPs	89	Underway	6/30/2024	TBD	Basinwide	FY2018-19 through FY2021-22	\$1,000,000.00	\$5,000,000.00	\$0.00	\$1,250,000.00	\$6,250,000.00
4566	SAFE	SRWMD	DEP/ Agricultural Producers	SRWMD-11	Accelerating Suwannee River Restoration and Silviculture Management	Incentivize silviculture and rural land conservation to reduce groundwater pumping and nitrogen loading in the Middle Suwannee springhed and Ichetucknee River.	Agricultural BMPs	228	Underway	9/30/2025	TBD	TBD	FY2019-20 through FY2021-22	\$750,000.00	\$1,878,736.00	\$0.00	\$500,000.00	\$2,378,736.00
4568	SAFE	SRWMD	City of Lake City/ Columbia County	SRWMD-13	Gwen Lake	The project addresses stormwater, flooding, erosion, and sedimentation concerns that impair the water quality and water storage capacity of Gwen Lake and adjacent waterways.	Regional Stormwater Treatment	206	Complete	9/28/2021	N/A	Lake City	FY2020-21 through FY2021-22	\$30,000.00	\$0.00	\$200,000.00	\$250,000.00	\$450,000.00
5460	SAFE	SRWMD	City of Lake City	SRWMD-14	Gwen Lake Phase 2	Installation of a drop structure behind the Parkview Baptist Church stormwater pond, regrade the conveyance, install stabilization to slow the water velocity and reduce the erosion and sedimentation contributing to the infill of Gwen Lake.	Regional Stormwater Treatment	272	Planned		TBD	Columbia County		\$100,000.00	\$0.00	\$220,000.00	\$75,000.00	\$295,000.00
5472	SAFE	SRWMD	Gilchrist County	SRWMD-15	Gilchrist NE 2nd Way Park	Stormwater improvements and bank stabilization.	Shoreline Stabilization	273	Underway	12/16/2022	TBD	Gilchrist County		\$143,970.00	\$167,974.00	\$143,970.00	\$4,500.00	\$316,444.00
5475	SAFE	SRWMD	DEP	SRWMD-18	Lake Butler AWT Upgrade Phases 1-3	Advanced wastewater treatment facility and created wetland to be constructed in three phases.	WWTF Upgrade	296	Underway	6/30/2025	2,988	Union County	FY2020-21 through FY2021-22	\$1,420,000.00	\$3,400,000.00	\$0.00	\$0.00	\$3,400,000.00

Appendix B. Basin Management Action Plan

DEP Project ID	BMAP	Lead Entity	Partners	DEP Project Number	Project Name	Project Description	Project Type	District Project Number	Project Status	Construction Completion Date	TN Reduction (lbs/yr)	Location	Fiscal Year Included in 5-Year WRDWP, If Applicable	WRDWP Current FY Funding	Total State Funding	Total District Funding	Lead Entity Match	Project Total
5797	SAFE	SRWMD	Alachua Conservation Trust/ DEP	SRWMD-19	Santa Fe Springs	Land acquisition with conservation easement will ensure less intensive land use.	Land Acquisition	256	Underway		N/A	Columbia County	FY2019-20 through FY2021-22	\$2,000,000.00	\$2,200,000.00	\$0.00	\$0.00	\$2,200,000.00
5798	SAFE	SRWMD	DEP/ Municipalities	SRWMD-21	Wastewater Feasibility Studies	Conduct analysis for using reclaimed water including treatment wetlands.	WWTF Diversion to Reuse	304	Underway	6/30/2024	TBD	Basinwide	FY2021-22	\$500,000.00	\$700,000.00	\$0.00	\$0.00	\$700,000.00
5449	WACI	SRWMD	Local Producers	SRWMD-06	Dairy Screen Separators	Connect two pivots to the Jeffco Dairy's wastewater system and retrofit three irrigation systems to low-pressure drop nozzle sprinklers. The project will offset groundwater use with a lower quality water source and allow for better use of nutrients.	Agricultural BMPs	7	Underway	6/30/2022	TBD	Jefferson County	FY2019-20 through FY2021-22	\$150,000.00	\$2,120,000.00	\$20,000.00	\$530,000.00	\$2,670,000.00
5450	WACI	SRWMD	Local Producers	SRWMD-07	Fertigation	Fertigating allows the producer to split up the application of fertilizer needed to grow a crop over the entire length of a growing season.	Agricultural BMPs	4	Underway	6/5/2022	4,115	Jefferson County		\$100,000.00	\$915,000.00	\$33,150.00	\$242,550.00	\$1,190,700.00
5451	WACI	SRWMD	DEP/ Local Governments	SRWMD-08	Suwannee Valley Springs Initiative	The District is developing a multi-media campaign that will focus on springs awareness and education to increase knowledge, engagement, and passion for water resources among residents and visitors.	Education Efforts	260	Underway	9/30/2022	N/A	Basinwide		\$150,000.00	\$300,000.00	\$0.00	\$0.00	\$300,000.00
5452	WACI	SRWMD	Local Producers	SRWMD-09	Precision Ag	Implementation of soil type mapping, soil and tissue sampling, and aerial imagery to reduce fertilizer and lime application on two farms.	Fertilizer Reduction	89	Underway	6/30/2024	3,276	Madison County	FY2018-19 through FY2021-22	\$1,000,000.00	\$5,000,000.00	\$0.00	\$1,250,000.00	\$6,250,000.00