

Annual Accountability Report
on the
Health of Florida's Child Welfare System
Fiscal Year 2022-2023



Shevaun L. Harris
Secretary

Ron DeSantis
Governor

Message from Secretary Harris

The Florida Department of Children and Families remains committed to supporting strong and resilient families who have the knowledge, skills, and resources necessary to achieve their goals, safely, and together. The State of Florida boasts a robust system of care that affords Floridians in need access to a wide array of services designed to provide the right care, at the right time, and in the most appropriate environment. Under the leadership of Governor Ron DeSantis, and with the ardent support of the Florida Legislature, we have bolstered existing services and invested in new, evidence-based programming with the goal of ensuring all children have a safe, permanent home in which to live and to grow.

We take seriously our obligation to operate as good stewards of taxpayer dollars and believe wholeheartedly that accountability efforts are vital to ensuring high-quality, timely care that produces the best outcomes for those we serve. These efforts are particularly important in Florida due to our community-based model for child welfare services which prioritizes a localized approach to provide personalized care and incredible opportunities for all of us to learn from one another in pursuit of continuous improvement.

Last year, in accordance with Section 409.996 (26), Florida Statutes, the Department published the inaugural Accountability Report on the Health of Florida's Child Welfare System and immediately began acting upon the identified opportunities for improvement, the first of which was refining certain measures. We worked in collaboration with our community partners to ensure closer alignment to federal standards, with greater focus on outcome-oriented measures, toward achieving overall safety, well-being, and permanency goals.

Given those changes, the truest gauge of progress made is comparing this year's scores to the scores from last year, adjusted to the refined measures. I am proud to share that Florida has made excellent progress over the last year. The adjusted average overall circuit score in the 2022 was 2.7 which improved by 11 percent to a 3.0. In this, 85 percent of circuits improved overall performance, and 60 percent earned a score of 3.0 or higher. We are also encouraged by the fact that 69 percent of all metrics statewide showed improvement.

We attribute much of this year's success to our continued excellence in ensuring child safety. The average circuit safety score increased over 7 percent from last year, with each of the safety metrics demonstrating statewide improvement and



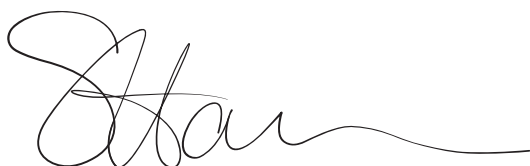
all circuits meeting or exceeding established safety standards. Additionally, there has been a 37 percent reduction in the number of cases requiring immediate child safety action. This is particularly important in that it demonstrates the urgency and diligence with which cases are investigated and safety assessed and maintained. This is due in large part to our emphasis on prompt assistance. In fact, Florida has the third fastest investigative response time in the nation, and, in 90 percent of cases, alleged victims are able to receive assistance face to face with a trained professional within 24 hours of report submission.

To ensure the integrity of the child welfare system, the Department has continued to review cases in real time to make critical adjustments quickly. In Fiscal Year 2022-2023, the Department conducted nearly 9,000 reviews, and the results were laudable. In addition to the gains made through the investigative process, we found that in 95 percent of in-home cases, case managers are making concerted efforts to arrange for appropriate protective services to prevent the entry or re-entry into out-of-home care. We strive to build upon this success year over year, and I applaud the investigators and case managers whose hard work and dedication is highlighted through these results.

Florida continues to prioritize permanent homes to support the well-being of children and families. We have deployed specialized teams, comprised of subject matter experts, to work with stakeholders across the state to identify and eliminate barriers to permanency, both localized and systemic. Performance improvement is at the heart of this work, and these teams are assisting circuits in developing and implementing strategies for improving the quality of parent and child interactions, enriching the assessment and provision of services to meet parents' needs, and increasing parent engagement in case planning and development. While these improvement efforts remain underway, some initial success has already been realized. The rate of exits from out- of-home care has far outpaced the number of entries over the last two years, and the statewide health of the system scores related to permanency have improved by 21.5 percent, with 90 percent of circuits achieving improved domain scores in those metrics.

These accomplishments are proof of the fervent dedication of Florida's child welfare professionals, and these results should be both a source of pride and a motivator to continue moving the needle. I am grateful for everyone who plays a role in helping our state's children and families reach their full potential and I look forward to another year of exceptional service to the people of Florida.

Shevaun L. Harris

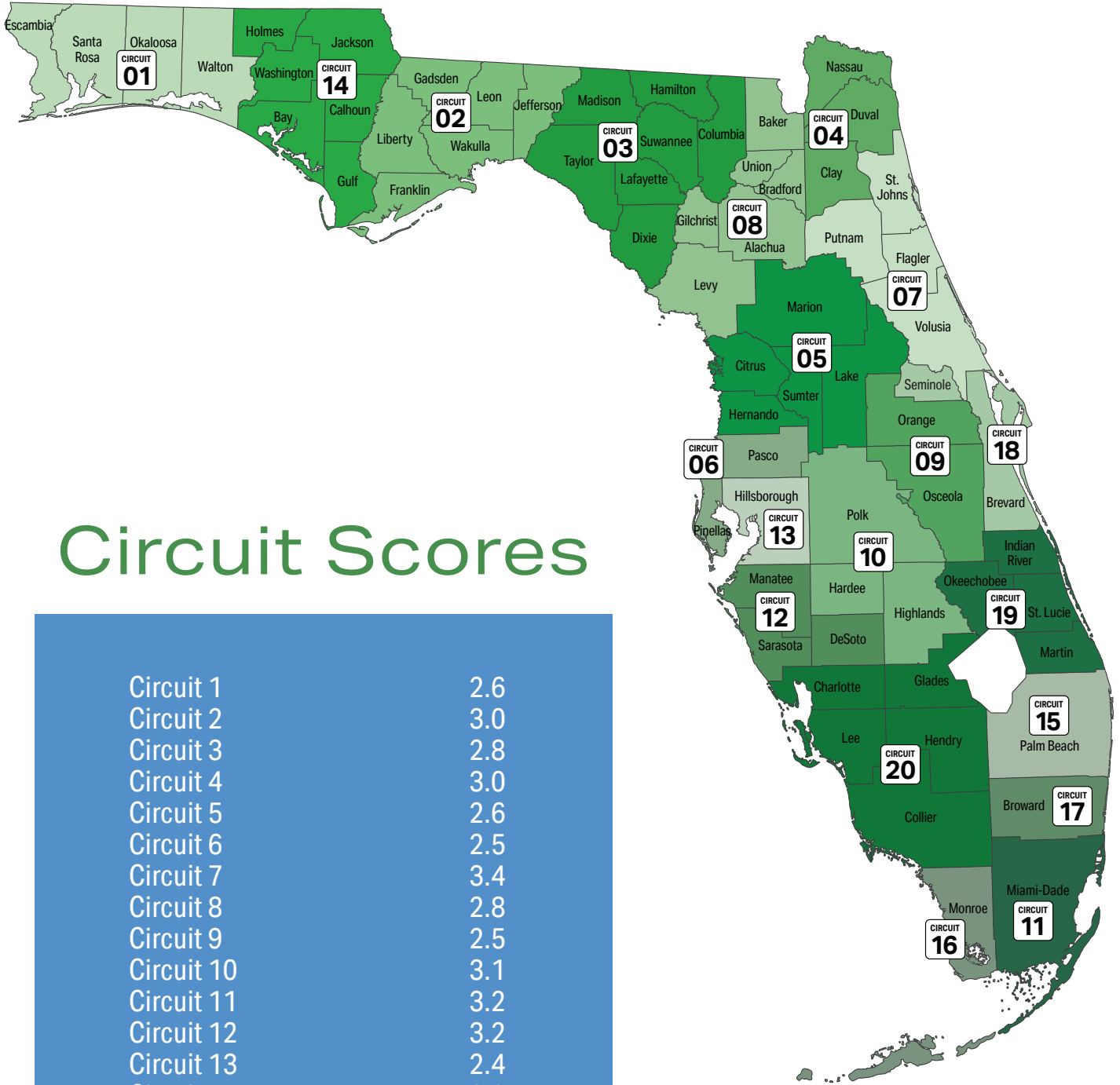
A handwritten signature in black ink, appearing to read 'Shevaun L. Harris', with a long horizontal flourish extending to the right.

Secretary

Contents

Message from Secretary Harris.....	2
Circuit 01	8
Circuit 02	10
Circuit 03	12
Circuit 04	14
Circuit 05	16
Circuit 06	18
Circuit 07	20
Circuit 08	22
Circuit 09	24
Circuit 10	26
Circuit 11	28
Circuit 12	30
Circuit 13	32
Circuit 14	34
Circuit 15	36
Circuit 16	38
Circuit 17	40
Circuit 18	42
Circuit 19	44
Circuit 20	46
Appendix 1: Methodology	48
Appendix 2: Accountability Metrics, Targets, and Scoring Thresholds	49
Appendix 3: Qualitative Index Standards by Domain	50

This page intentionally left blank.



Circuit Scores

Circuit 1	2.6
Circuit 2	3.0
Circuit 3	2.8
Circuit 4	3.0
Circuit 5	2.6
Circuit 6	2.5
Circuit 7	3.4
Circuit 8	2.8
Circuit 9	2.5
Circuit 10	3.1
Circuit 11	3.2
Circuit 12	3.2
Circuit 13	2.4
Circuit 14	3.2
Circuit 15	3.3
Circuit 16	4.0
Circuit 17	3.2
Circuit 18	2.8
Circuit 19	3.2
Circuit 20	3.2

2023 ACCOUNTABILITY SCORECARD

Legend



Excellent
4.25 – 5.00

Circuit's performance **well exceeds** established standards.



Exceeds Expectations
3.50 – 4.24

Circuit's performance **exceeds** established standards.



Meets Expectations
3.00 – 3.49

Circuit's performance **meets** established standards.



Below Expectations
2.00 – 2.99

Circuit's performance **does not meet** established standards.



Poor
1.00 – 1.99

Circuit's performance is **well below** established standards.

CIRCUIT 01



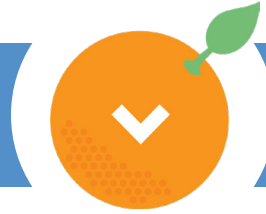
Escambia
Okaloosa
Santa Rosa
Walton

OVERALL SCORE



2.6

PERMANENCY



2.3

SAFETY



3.5

WELL-BEING



2.0

Circuit Statewide

Total Population
Population Under 18

802,751
174,047

22,005,587
4,314,627

Investigations
Removals
Removal Rate Per 1,000 Investigations

11,085
586
5.30

214,871
10,357
4.80

Children Receiving Services
Children Entering Care
Children Exiting Care
Entry Rate Per 1,000 in the General Population

4,010
1,441
1,632
8.30

60,293
22,788
23,486
5.30

Unemployment Rate
Graduation Rate
Suicide Rate Per 100,000
Families Below Poverty Level

2.70%
86.10%
18.70
8.70%

2.90%
87.30%
13.80
9.30%

METRIC PERFORMANCE

Investigations: DCF | Walton County Sheriff's Office
 Lead Agency: FamiliesFirst Network/Northwest Florida Health Network*
 Legal Services: DCF

CIRCUIT 01

PERMANENCY

	Circuit Performance	Metric Score	Target	Statewide Performance
Children Achieving Permanency and Not Reentering within 12 Months	95.21%	3	94.40%	90.94%
Children Achieving Permanency within 12 Months	25.49%	2	35.20%	29.01%
Children Achieving Permanency within 12 Months for Children in Out-of-Home Care 12 to 23 Months	45.78%	3	43.80%	47.44%
Children Placed with Relatives or Non-Relatives	61.47%	3	60.00%	57.83%
Moves Per 1,000 Bed Days	7.33	1	4.50	5.88
Qualitative Index for Permanency	69.88%	2	90.00%	75.71%

SAFETY

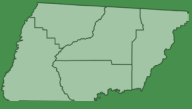
Children Not Abused During In-Home Services	99.03%	5	98.00%	99.19%
Children Not Abused During Out-of-Home Services per 100,000 Bed Days	10.23	2	9.07	6.58
Children with No Recurrence of Verified Maltreatment within 12 Months of a Prior Verified Maltreatment	91.72%	3	90.30%	93.28%
Qualitative Index for Safety	80.70%	4	90.00%	78.50%

WELL-BEING

Children Seen Every 30 Days	99.70%	3	99.50%	99.16%
Children Placed with Siblings	61.04%	2	65.00%	60.51%
Qualitative Index for Well-Being	50.70%	1	90.00%	55.11%

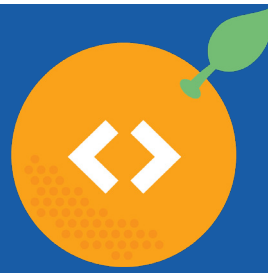
*The Northwest Florida Health Network contract took effect on November 1, 2022; Families First Network was the lead agency for the first four months of the timeframe covered in the report.

CIRCUIT 02



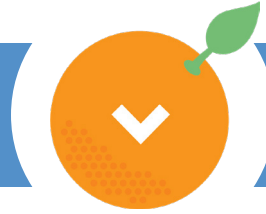
Franklin
Gadsden
Jefferson
Leon
Liberty
Wakulla

OVERALL SCORE



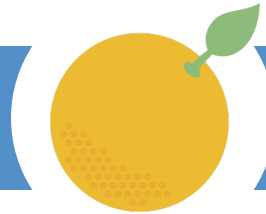
3.0

PERMANENCY



2.7

SAFETY



4.5

WELL-BEING



1.7

Circuit Statewide

Total Population
Population Under 18

418,889
85,847

22,005,587
4,314,627

Investigations
Removals
Removal Rate Per 1,000 Investigations

5,229
271
5.20

214,871
10,357
4.80

Children Receiving Services
Children Entering Care
Children Exiting Care
Entry Rate Per 1,000 in the General Population

1,874
1,000
994
11.60

60,293
22,788
23,486
5.30

Unemployment Rate
Graduation Rate
Suicide Rate Per 100,000
Families Below Poverty Level

3.00%
86.20%
16.40
10.70%

2.90%
87.30%
13.80
9.30%

METRIC PERFORMANCE

Investigations: DCF
 Lead Agency: Northwest Florida Health Network
 Legal Services: DCF

CIRCUIT 02

PERMANENCY

	Circuit Performance	Metric Score	Target	Statewide Performance
Children Achieving Permanency and Not Reentering within 12 Months	96.88%	3	94.40%	90.94%
Children Achieving Permanency within 12 Months	33.02%	2	35.20%	29.01%
Children Achieving Permanency within 12 Months for Children in Out-of-Home Care 12 to 23 Months	61.86%	5	43.80%	47.44%
Children Placed with Relatives or Non-Relatives	57.27%	2	60.00%	57.83%
Moves Per 1,000 Bed Days	5.93	1	4.50	5.88
Qualitative Index for Permanency	71.69%	3	90.00%	75.71%

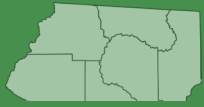
SAFETY

Children Not Abused During In-Home Services	99.47%	5	98.00%	99.19%
Children Not Abused During Out-of-Home Services per 100,000 Bed Days	6.34	5	9.07	6.58
Children with No Recurrence of Verified Maltreatment within 12 Months of a Prior Verified Maltreatment	93.39%	5	90.30%	93.28%
Qualitative Index for Safety	70.90%	3	90.00%	78.50%

WELL-BEING

Children Seen Every 30 Days	99.67%	3	99.50%	99.16%
Children Placed with Siblings	55.85%	1	65.00%	60.51%
Qualitative Index for Well-Being	41.34%	1	90.00%	55.11%

CIRCUIT 03



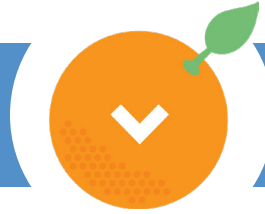
Columbia
Dixie
Hamilton
Lafayette
Madison
Suwannee
Taylor

OVERALL SCORE



2.8

PERMANENCY



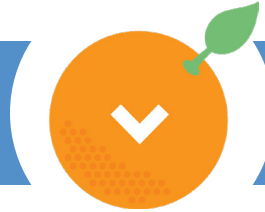
2.5

SAFETY



3.8

WELL-BEING



2.3

Circuit Statewide

Total Population	198,392	22,005,587
Population Under 18	40,165	4,314,627
Investigations	3,119	214,871
Removals	187	10,357
Removal Rate Per 1,000 Investigations	6.00	4.80
Children Receiving Services	1,056	60,293
Children Entering Care	420	22,788
Children Exiting Care	419	23,486
Entry Rate Per 1,000 in the General Population	10.50	5.30
Unemployment Rate	3.30%	2.90%
Graduation Rate	87.30%	87.30%
Suicide Rate Per 100,000	21.60	13.80
Families Below Poverty Level	11.80%	9.30%

METRIC PERFORMANCE

Investigations: DCF
 Lead Agency: Partnership for Strong Families
 Legal Services: DCF

CIRCUIT 03

PERMANENCY

	Circuit Performance	Metric Score	Target	Statewide Performance
Children Achieving Permanency and Not Reentering within 12 Months	93.88%	2	94.40%	90.94%
Children Achieving Permanency within 12 Months	21.89%	2	35.20%	29.01%
Children Achieving Permanency within 12 Months for Children in Out-of-Home Care 12 to 23 Months	45.90%	3	43.80%	47.44%
Children Placed with Relatives or Non-Relatives	67.57%	4	60.00%	57.83%
Moves Per 1,000 Bed Days	8.65	1	4.50	5.88
Qualitative Index for Permanency	73.90%	3	90.00%	75.71%

SAFETY

Children Not Abused During In-Home Services	99.17%	5	98.00%	99.19%
Children Not Abused During Out-of-Home Services per 100,000 Bed Days	9.94	2	9.07	6.58
Children with No Recurrence of Verified Maltreatment within 12 Months of a Prior Verified Maltreatment	97.68%	5	90.30%	93.28%
Qualitative Index for Safety	76.50%	3	90.00%	78.50%

WELL-BEING

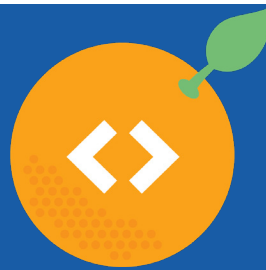
Children Seen Every 30 Days	99.75%	4	99.50%	99.16%
Children Placed with Siblings	57.31%	2	65.00%	60.51%
Qualitative Index for Well-Being	46.53%	1	90.00%	55.11%

CIRCUIT 04



Clay
Duval
Nassau

OVERALL SCORE



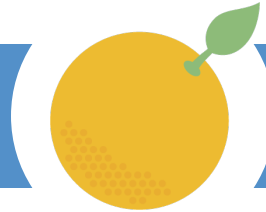
3.0

PERMANENCY



2.5

SAFETY



4.5

WELL-BEING



2.0

Circuit Statewide

Total Population	10,312,656	22,005,587
Population Under 18	295,989	4,314,627
Investigations	17,502	214,871
Removals	753	10,357
Removal Rate Per 1,000 Investigations	4.30	4.80
Children Receiving Services	5,086	60,293
Children Entering Care	1,870	22,788
Children Exiting Care	1,782	23,486
Entry Rate Per 1,000 in the General Population	6.30	5.30
Unemployment Rate	2.90%	2.90%
Graduation Rate	87.30%	87.30%
Suicide Rate Per 100,000	14.20	13.80
Families Below Poverty Level	9.80%	9.30%

METRIC PERFORMANCE

Investigations: DCF
 Lead Agency: Family Support Services of North Florida, Inc (Duval and Nassau) | Kids First of Florida (Clay)
 Legal Services: DCF

CIRCUIT 04

PERMANENCY

	Circuit Performance	Metric Score	Target	Statewide Performance
Children Achieving Permanency and Not Reentering within 12 Months	88.75%	2	94.40%	90.94%
Children Achieving Permanency within 12 Months	28.04%	2	35.20%	29.01%
Children Achieving Permanency within 12 Months for Children in Out-of-Home Care 12 to 23 Months	53.76%	4	43.80%	47.44%
Children Placed with Relatives or Non-Relatives	49.69%	2	60.00%	57.83%
Moves Per 1,000 Bed Days	5.14	2	4.50	5.88
Qualitative Index for Permanency	78.95%	3	90.00%	75.71%

SAFETY

Children Not Abused During In-Home Services	99.18%	5	98.00%	99.19%
Children Not Abused During Out-of-Home Services per 100,000 Bed Days	5.55	5	9.07	6.58
Children with No Recurrence of Verified Maltreatment within 12 Months of a Prior Verified Maltreatment	95.11%	5	90.30%	93.28%
Qualitative Index for Safety	76.80%	3	90.00%	78.50%

WELL-BEING

Children Seen Every 30 Days	99.67%	3	99.50%	99.16%
Children Placed with Siblings	56.52%	1	65.00%	60.51%
Qualitative Index for Well-Being	60.00%	2	90.00%	55.11%

CIRCUIT 05



Citrus
Hernando
Lake
Marion
Sumter

OVERALL SCORE



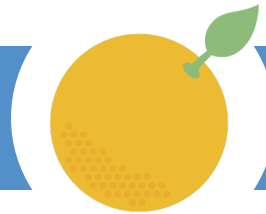
2.6

PERMANENCY



2.0

SAFETY



4.5

WELL-BEING



1.3

Circuit Statewide

Total Population
Population Under 18

1,254,700
206,248

22,005,587
4,314,627

Investigations
Removals
Removal Rate Per 1,000 Investigations

14,983
763
5.10

214,871
10,357
4.80

Children Receiving Services
Children Entering Care
Children Exiting Care
Entry Rate Per 1,000 in the General Population

4,116
1,538
1,466
7.50

60,293
22,788
23,486
5.30

Unemployment Rate
Graduation Rate
Suicide Rate Per 100,000
Families Below Poverty Level

3.40%
87.10%
17.50
8.80%

2.90%
87.30%
13.80
9.30%

METRIC PERFORMANCE

Investigations: DCF
 Lead Agency: Kids Central, Inc.
 Legal Services: DCF

CIRCUIT 05

PERMANENCY

	Circuit Performance	Metric Score	Target	Statewide Performance
Children Achieving Permanency and Not Reentering within 12 Months	88.74%	2	94.40%	90.94%
Children Achieving Permanency within 12 Months	28.76%	2	35.20%	29.01%
Children Achieving Permanency within 12 Months for Children in Out-of-Home Care 12 to 23 Months	37.36%	2	43.80%	47.44%
Children Placed with Relatives or Non-Relatives	60.90%	3	60.00%	57.83%
Moves Per 1,000 Bed Days	6.99	1	4.50	5.88
Qualitative Index for Permanency	68.20%	2	90.00%	75.71%

SAFETY

Children Not Abused During In-Home Services	99.16%	5	98.00%	99.19%
Children Not Abused During Out-of-Home Services per 100,000 Bed Days	2.58	5	9.07	6.58
Children with No Recurrence of Verified Maltreatment within 12 Months of a Prior Verified Maltreatment	93.80%	5	90.30%	93.28%
Qualitative Index for Safety	76.30%	3	90.00%	78.50%

WELL-BEING

Children Seen Every 30 Days	97.97%	1	99.50%	99.16%
Children Placed with Siblings	63.13%	2	65.00%	60.51%
Qualitative Index for Well-Being	46.96%	1	90.00%	55.11%

CIRCUIT 06



Pasco
Pinellas

OVERALL SCORE



2.5

PERMANENCY



2.0

SAFETY



3.8

WELL-BEING



1.7

Circuit Statewide

Total Population
Population Under 18

1,548,704
267,244

22,005,587
4,314,627

Investigations
Removals
Removal Rate Per 1,000 Investigations

14,155
854
6.00

214,871
10,357
4.80

Children Receiving Services
Children Entering Care
Children Exiting Care
Entry Rate Per 1,000 in the General Population

5,848
2,050
2,315
7.70

60,293
22,788
23,486
5.30

Unemployment Rate
Graduation Rate
Suicide Rate Per 100,000
Families Below Poverty Level

2.80%
89.00%
17.00
7.80%

2.90%
87.30%
13.80
9.30%

METRIC PERFORMANCE

Investigations: Pasco County Sheriff's Office | Pinellas County Sheriff's Office
 Lead Agency: Family Support Services
 Legal Services: State Attorney's Office

CIRCUIT 06

PERMANENCY

	Circuit Performance	Metric Score	Target	Statewide Performance
Children Achieving Permanency and Not Reentering within 12 Months	88.86%	2	94.40%	90.94%
Children Achieving Permanency within 12 Months	26.47%	2	35.20%	29.01%
Children Achieving Permanency within 12 Months for Children in Out-of-Home Care 12 to 23 Months	40.35%	2	43.80%	47.44%
Children Placed with Relatives or Non-Relatives	57.25%	2	60.00%	57.83%
Moves Per 1,000 Bed Days	7.30	1	4.50	5.88
Qualitative Index for Permanency	76.90%	3	90.00%	75.71%

SAFETY

Children Not Abused During In-Home Services	99.19%	5	98.00%	99.19%
Children Not Abused During Out-of-Home Services per 100,000 Bed Days	6.84	4	9.07	6.58
Children with No Recurrence of Verified Maltreatment within 12 Months of a Prior Verified Maltreatment	91.30%	3	90.30%	93.28%
Qualitative Index for Safety	79.70%	3	90.00%	78.50%

WELL-BEING

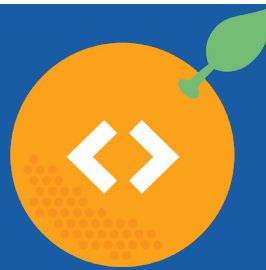
Children Seen Every 30 Days	98.36%	2	99.50%	99.16%
Children Placed with Siblings	62.10%	2	65.00%	60.51%
Qualitative Index for Well-Being	54.29%	1	90.00%	55.11%

CIRCUIT 07



Flagler
Putnam
St. Johns
Volusia

OVERALL SCORE



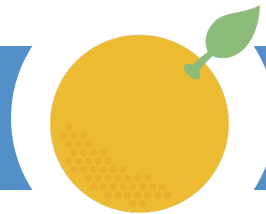
3.4

PERMANENCY



3.0

SAFETY



4.8

WELL-BEING



2.3

Circuit Statewide

Total Population
Population Under 18

1,026,187
190,131

22,005,587
4,314,627

Investigations
Removals
Removal Rate Per 1,000 Investigations

11,489
331
2.90

214,871
10,357
4.80

Children Receiving Services
Children Entering Care
Children Exiting Care
Entry Rate Per 1,000 in the General Population

2,831
987
1,253
5.20

60,293
22,788
23,486
5.30

Unemployment Rate
Graduation Rate
Suicide Rate Per 100,000
Families Below Poverty Level

3.00%
90.60%
17.80
8.00%

2.90%
87.30%
13.80
9.30%

METRIC PERFORMANCE

Investigations: DCF
 Lead Agencies: Community Partnership for Children, Inc. (Flagler, Putnam, Volusia) St. Johns County Board of County Commissioners
 Family Integrity Program
 Legal Services: DCF

CIRCUIT 07

PERMANENCY

	Circuit Performance	Metric Score	Target	Statewide Performance
Children Achieving Permanency and Not Reentering within 12 Months	88.24%	2	94.40%	90.94%
Children Achieving Permanency within 12 Months	26.14%	2	35.20%	29.01%
Children Achieving Permanency within 12 Months for Children in Out-of-Home Care 12 to 23 Months	58.41%	5	43.80%	47.44%
Children Placed with Relatives or Non-Relatives	51.85%	2	60.00%	57.83%
Moves Per 1,000 Bed Days	4.10	3	4.50	5.88
Qualitative Index for Permanency	81.87%	4	90.00%	75.71%

SAFETY

Children Not Abused During In-Home Services	99.20%	5	98.00%	99.19%
Children Not Abused During Out-of-Home Services per 100,000 Bed Days	6.35	5	9.07	6.58
Children with No Recurrence of Verified Maltreatment within 12 Months of a Prior Verified Maltreatment	93.65%	5	90.30%	93.28%
Qualitative Index for Safety	81.10%	4	90.00%	78.50%

WELL-BEING

Children Seen Every 30 Days	99.70%	3	99.50%	99.16%
Children Placed with Siblings	61.75%	2	65.00%	60.51%
Qualitative Index for Well-Being	67.78%	2	90.00%	55.11%

CIRCUIT 08



Alachua
Baker
Bradford
Gilchrist
Levy
Union

OVERALL SCORE



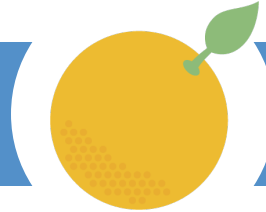
2.8

PERMANENCY



2.3

SAFETY



4.3

WELL-BEING



1.7

Circuit Statewide

Total Population
Population Under 18

409,270
75,988

22,005,587
4,314,627

Investigations
Removals
Removal Rate Per 1,000 Investigations

5,600
208
3.70

214,871
10,357
4.80

Children Receiving Services
Children Entering Care
Children Exiting Care
Entry Rate Per 1,000 in the General Population

1,055
465
518
6.10

60,293
22,788
23,486
5.30

Unemployment Rate
Graduation Rate
Suicide Rate Per 100,000
Families Below Poverty Level

2.90%
85.10%
15.40
10.10%

2.90%
87.30%
13.80
9.30%

METRIC PERFORMANCE

Investigations: DCF
 Lead Agency: Partnership for Strong Families
 Legal Services: DCF

CIRCUIT 08

PERMANENCY

	Circuit Performance	Metric Score	Target	Statewide Performance
Children Achieving Permanency and Not Reentering within 12 Months	96.49%	3	94.40%	90.94%
Children Achieving Permanency within 12 Months	30.04%	2	35.20%	29.01%
Children Achieving Permanency within 12 Months for Children in Out-of-Home Care 12 to 23 Months	36.76%	2	43.80%	47.44%
Children Placed with Relatives or Non-Relatives	58.42%	2	60.00%	57.83%
Moves Per 1,000 Bed Days	6.80	1	4.50	5.88
Qualitative Index for Permanency	80.67%	4	90.00%	75.71%

SAFETY

Children Not Abused During In-Home Services	99.81%	5	98.00%	99.19%
Children Not Abused During Out-of-Home Services per 100,000 Bed Days	6.96	4	9.07	6.58
Children with No Recurrence of Verified Maltreatment within 12 Months of a Prior Verified Maltreatment	94.01%	5	90.30%	93.28%
Qualitative Index for Safety	79.20%	3	90.00%	78.50%

WELL-BEING

Children Seen Every 30 Days	99.73%	3	99.50%	99.16%
Children Placed with Siblings	52.12%	1	65.00%	60.51%
Qualitative Index for Well-Being	47.33%	1	90.00%	55.11%

CIRCUIT 09



Orange
Osceola

OVERALL SCORE



2.5

PERMANENCY



2.2

SAFETY



3.8

WELL-BEING



1.7

Circuit Statewide

Total Population	1,853,911	22,005,587
Population Under 18	411,097	4,314,627
Investigations	19,765	214,871
Removals	561	10,357
Removal Rate Per 1,000 Investigations	2.80	4.80
Children Receiving Services	3,139	60,293
Children Entering Care	1,072	22,788
Children Exiting Care	1,306	23,486
Entry Rate Per 1,000 in the General Population	2.60	5.30
Unemployment Rate	3.00%	2.90%
Graduation Rate	86.60%	87.30%
Suicide Rate Per 100,000	9.30	13.80
Families Below Poverty Level	10.70%	9.30%

METRIC PERFORMANCE

Investigations: DCF
 Lead Agency: Embrace Families
 Legal Services: DCF

CIRCUIT 09

PERMANENCY

	Circuit Performance	Metric Score	Target	Statewide Performance
Children Achieving Permanency and Not Reentering within 12 Months	92.52%	2	94.40%	90.94%
Children Achieving Permanency within 12 Months	20.43%	2	35.20%	29.01%
Children Achieving Permanency within 12 Months for Children in Out-of-Home Care 12 to 23 Months	43.78%	2	43.80%	47.44%
Children Placed with Relatives or Non-Relatives	61.48%	3	60.00%	57.83%
Moves Per 1,000 Bed Days	6.42	1	4.50	5.88
Qualitative Index for Permanency	74.62%	3	90.00%	75.71%

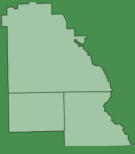
SAFETY

Children Not Abused During In-Home Services	98.92%	5	98.00%	99.19%
Children Not Abused During Out-of-Home Services per 100,000 Bed Days	9.06	3	9.07	6.58
Children with No Recurrence of Verified Maltreatment within 12 Months of a Prior Verified Maltreatment	92.93%	4	90.30%	93.28%
Qualitative Index for Safety	71.50%	3	90.00%	78.50%

WELL-BEING

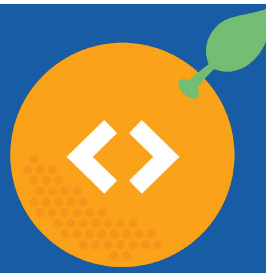
Children Seen Every 30 Days	98.74%	2	99.50%	99.16%
Children Placed with Siblings	57.98%	2	65.00%	60.51%
Qualitative Index for Well-Being	49.71%	1	90.00%	55.11%

CIRCUIT 10



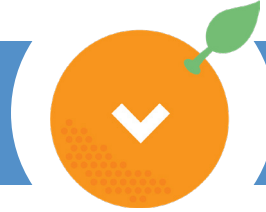
Hardee
Highlands
Polk

OVERALL SCORE



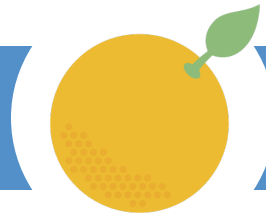
3.1

PERMANENCY



2.7

SAFETY



4.3

WELL-BEING



2.3

Circuit Statewide

Total Population
Population Under 18

1,035,703
210,597

22,005,587
4,314,627

Investigations
Removals
Removal Rate Per 1,000 Investigations

11,629
729
6.30

214,871
10,357
4.80

Children Receiving Services
Children Entering Care
Children Exiting Care
Entry Rate Per 1,000 in the General Population

3,088
1,366
1,283
6.50

60,293
22,788
23,486
5.30

Unemployment Rate
Graduation Rate
Suicide Rate Per 100,000
Families Below Poverty Level

3.50%
80.80%
13.40
10.6%

2.90%
87.30%
13.80
9.30%

METRIC PERFORMANCE

Investigations: DCF
 Lead Agency: Heartland For Children
 Legal Services: DCF

CIRCUIT 10

PERMANENCY

	Circuit Performance	Metric Score	Target	Statewide Performance
Children Achieving Permanency and Not Reentering within 12 Months	92.27%	2	94.40%	90.94%
Children Achieving Permanency within 12 Months	29.26%	2	35.20%	29.01%
Children Achieving Permanency within 12 Months for Children in Out-of-Home Care 12 to 23 Months	44.11%	3	43.80%	47.44%
Children Placed with Relatives or Non-Relatives	61.27%	3	60.00%	57.83%
Moves Per 1,000 Bed Days	4.18	3	4.50	5.88
Qualitative Index for Permanency	71.67%	3	90.00%	75.71%

SAFETY

Children Not Abused During In-Home Services	99.13%	5	98.00%	99.19%
Children Not Abused During Out-of-Home Services per 100,000 Bed Days	6.52	5	9.07	6.58
Children with No Recurrence of Verified Maltreatment within 12 Months of a Prior Verified Maltreatment	92.32%	4	90.30%	93.28%
Qualitative Index for Safety	79.00%	3	90.00%	78.50%

WELL-BEING

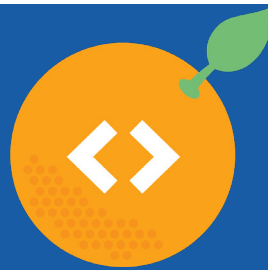
Children Seen Every 30 Days	99.82%	4	99.50%	99.16%
Children Placed with Siblings	58.00%	2	65.00%	60.51%
Qualitative Index for Well-Being	47.41%	1	90.00%	55.11%

CIRCUIT 11



Miami-Dade

OVERALL SCORE



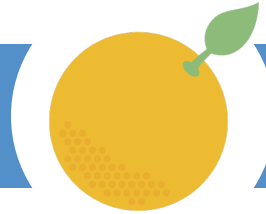
3.2

PERMANENCY



2.8

SAFETY



4.5

WELL-BEING



2.0

Circuit Statewide

Total Population	2,860,584	22,005,587
Population Under 18	577,566	4,314,627
Investigations	14,719	214,871
Removals	719	10,357
Removal Rate Per 1,000 Investigations	4.90	4.80
Children Receiving Services	2,735	60,293
Children Entering Care	952	22,788
Children Exiting Care	782	23,486
Entry Rate Per 1,000 in the General Population	1.60	5.30
Unemployment Rate	2.60%	2.90%
Graduation Rate	88.20%	87.30%
Suicide Rate Per 100,000	7.30	13.80
Families Below Poverty Level	12.50%	9.30%

METRIC PERFORMANCE

Investigations: DCF
 Lead Agency: Citrus Family Care Network
 Legal Services: DCF

CIRCUIT 11

PERMANENCY

	Circuit Performance	Metric Score	Target	Statewide Performance
Children Achieving Permanency and Not Reentering within 12 Months	91.67%	2	94.40%	90.94%
Children Achieving Permanency within 12 Months	20.48%	2	35.20%	29.01%
Children Achieving Permanency within 12 Months for Children in Out-of-Home Care 12 to 23 Months	44.44%	3	43.80%	47.44%
Children Placed with Relatives or Non-Relatives	54.22%	2	60.00%	57.83%
Moves Per 1,000 Bed Days	3.61	5	4.50	5.88
Qualitative Index for Permanency	70.46%	3	90.00%	75.71%

SAFETY

Children Not Abused During In-Home Services	99.41%	5	98.00%	99.19%
Children Not Abused During Out-of-Home Services per 100,000 Bed Days	4.36	5	9.07	6.58
Children with No Recurrence of Verified Maltreatment within 12 Months of a Prior Verified Maltreatment	97.43%	5	90.30%	93.28%
Qualitative Index for Safety	77.10%	3	90.00%	78.50%

WELL-BEING

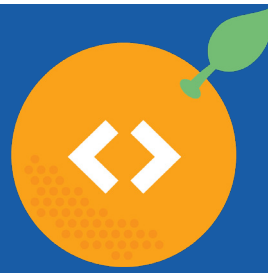
Children Seen Every 30 Days	99.52%	3	99.50%	99.16%
Children Placed with Siblings	60.53%	2	65.00%	60.51%
Qualitative Index for Well-Being	53.28%	1	90.00%	55.11%

CIRCUIT 12



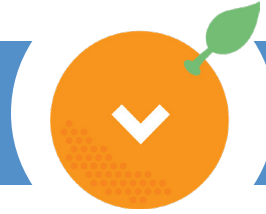
DeSoto
Manatee
Sarasota

OVERALL SCORE



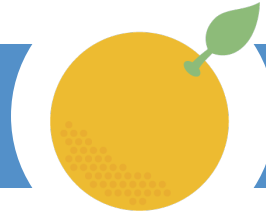
3.2

PERMANENCY



2.7

SAFETY



4.5

WELL-BEING



2.3

Circuit Statewide

Total Population
Population Under 18

899,393
141,986

22,005,587
4,314,627

Investigations
Removals
Removal Rate Per 1,000 Investigations

7,428
443
6.00

214,871
10,357
4.80

Children Receiving Services
Children Entering Care
Children Exiting Care
Entry Rate Per 1,000 in the General Population

3,514
858
981
6.00

60,293
22,788
23,486
5.30

Unemployment Rate
Graduation Rate
Suicide Rate Per 100,000
Families Below Poverty Level

2.90%
84.10%
16.60
6.30%

2.90%
87.30%
13.80
9.30%

METRIC PERFORMANCE

Investigations: DCF | Manatee County Sheriff's Office
 Lead Agency: Safe Children Coalition
 Legal Services: DCF

CIRCUIT 12

PERMANENCY

	Circuit Performance	Metric Score	Target	Statewide Performance
Children Achieving Permanency and Not Reentering within 12 Months	92.04%	2	94.40%	90.94%
Children Achieving Permanency within 12 Months	34.07%	2	35.20%	29.01%
Children Achieving Permanency within 12 Months for Children in Out-of-Home Care 12 to 23 Months	54.20%	4	43.80%	47.44%
Children Placed with Relatives or Non-Relatives	62.18%	3	60.00%	57.83%
Moves Per 1,000 Bed Days	4.79	2	4.50	5.88
Qualitative Index for Permanency	79.05%	3	90.00%	75.71%

SAFETY

Children Not Abused During In-Home Services	99.35%	5	98.00%	99.19%
Children Not Abused During Out-of-Home Services per 100,000 Bed Days	5.67	5	9.07	6.58
Children with No Recurrence of Verified Maltreatment within 12 Months of a Prior Verified Maltreatment	92.51%	4	90.30%	93.28%
Qualitative Index for Safety	81.50%	4	90.00%	78.50%

WELL-BEING

Children Seen Every 30 Days	99.35%	2	99.50%	99.16%
Children Placed with Siblings	65.71%	3	65.00%	60.51%
Qualitative Index for Well-Being	63.64%	2	90.00%	55.11%

CIRCUIT 13



Hillsborough

OVERALL SCORE



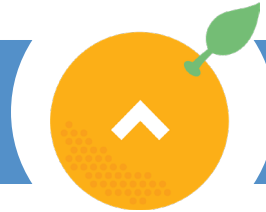
2.4

PERMANENCY



2.0

SAFETY



3.8

WELL-BEING



1.3

Circuit Statewide

Total Population	1,515,107	22,005,587
Population Under 18	335,430	4,314,627
Investigations	14,640	214,871
Removals	710	10,357
Removal Rate Per 1,000 Investigations	4.80	4.80
Children Receiving Services	5,059	60,293
Children Entering Care	1,911	22,788
Children Exiting Care	1,834	23,486
Entry Rate Per 1,000 in the General Population	5.70	5.30
Unemployment Rate	2.80%	2.90%
Graduation Rate	87.90%	87.30%
Suicide Rate Per 100,000	13.40	13.80
Families Below Poverty Level	10.20%	9.30%

METRIC PERFORMANCE

Investigations: Hillsborough County Sheriff's Office
 Lead Agency: Children's Network of Hillsborough
 Legal Services: DCF

CIRCUIT 13

PERMANENCY

	Circuit Performance	Metric Score	Target	Statewide Performance
Children Achieving Permanency and Not Reentering within 12 Months	91.97%	2	94.40%	90.94%
Children Achieving Permanency within 12 Months	28.65%	2	35.20%	29.01%
Children Achieving Permanency within 12 Months for Children in Out-of-Home Care 12 to 23 Months	32.40%	2	43.80%	47.44%
Children Placed with Relatives or Non-Relatives	60.52%	3	60.00%	57.83%
Moves Per 1,000 Bed Days	8.92	1	4.50	5.88
Qualitative Index for Permanency	69.91%	2	90.00%	75.71%

SAFETY

Children Not Abused During In-Home Services	99.21%	5	98.00%	99.19%
Children Not Abused During Out-of-Home Services per 100,000 Bed Days	7.30	4	9.07	6.58
Children with No Recurrence of Verified Maltreatment within 12 Months of a Prior Verified Maltreatment	92.14%	3	90.30%	93.28%
Qualitative Index for Safety	74.60%	3	90.00%	78.50%

WELL-BEING

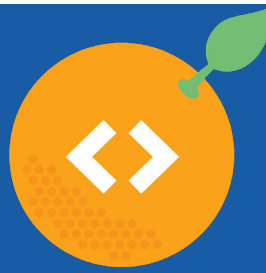
Children Seen Every 30 Days	98.13%	1	99.50%	99.16%
Children Placed with Siblings	58.88%	2	65.00%	60.51%
Qualitative Index for Well-Being	48.93%	1	90.00%	55.11%

CIRCUIT 14



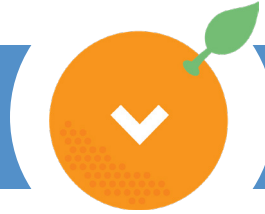
Bay
Calhoun
Gulf
Holmes
Jackson
Washington

OVERALL SCORE



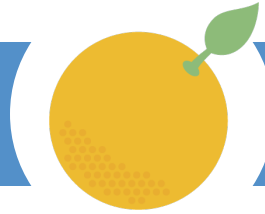
3.2

PERMANENCY



2.8

SAFETY



4.8

WELL-BEING



2.0

Circuit Statewide

Total Population	298,520	22,005,587
Population Under 18	59,321	4,314,627
Investigations	5,811	214,871
Removals	357	10,357
Removal Rate Per 1,000 Investigations	6.10	4.80
Children Receiving Services	1,318	60,293
Children Entering Care	672	22,788
Children Exiting Care	694	23,486
Entry Rate Per 1,000 in the General Population	11.30	5.30
Unemployment Rate	2.80%	2.90%
Graduation Rate	85.80%	87.30%
Suicide Rate Per 100,000	18.90	13.80
Families Below Poverty Level	10.80%	9.30%

METRIC PERFORMANCE

Investigations: DCF
 Lead Agency: Northwest Florida Health Network
 Legal Services: DCF

CIRCUIT 14

PERMANENCY

	Circuit Performance	Metric Score	Target	Statewide Performance
Children Achieving Permanency and Not Reentering within 12 Months	94.83%	3	94.40%	90.94%
Children Achieving Permanency within 12 Months	33.07%	2	35.20%	29.01%
Children Achieving Permanency within 12 Months for Children in Out-of-Home Care 12 to 23 Months	67.83%	5	43.80%	47.44%
Children Placed with Relatives or Non-Relatives	61.31%	3	60.00%	57.83%
Moves Per 1,000 Bed Days	5.99	1	4.50	5.88
Qualitative Index for Permanency	77.39%	3	90.00%	75.71%

SAFETY

Children Not Abused During In-Home Services	99.54%	5	98.00%	99.19%
Children Not Abused During Out-of-Home Services per 100,000 Bed Days	5.93	5	9.07	6.58
Children with No Recurrence of Verified Maltreatment within 12 Months of a Prior Verified Maltreatment	95.91%	5	90.30%	93.28%
Qualitative Index for Safety	80.60%	4	90.00%	78.50%

WELL-BEING

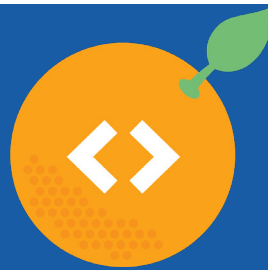
Children Seen Every 30 Days	99.49%	2	99.50%	99.16%
Children Placed with Siblings	66.84%	3	65.00%	60.51%
Qualitative Index for Well-Being	54.26%	1	90.00%	55.11%

CIRCUIT 15



Palm Beach

OVERALL SCORE



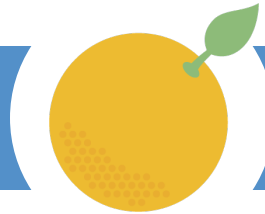
3.3

PERMANENCY



3.2

SAFETY



4.3

WELL-BEING



2.3

Circuit Statewide

Total Population	1,487,272	22,005,587
Population Under 18	280,753	4,314,627
Investigations	11,382	214,871
Removals	565	10,357
Removal Rate Per 1,000 Investigations	5.00	4.80
Children Receiving Services	3,199	60,293
Children Entering Care	1,027	22,788
Children Exiting Care	1,055	23,486
Entry Rate Per 1,000 in the General Population	3.70	5.30
Unemployment Rate	2.90%	2.90%
Graduation Rate	89.00%	87.30%
Suicide Rate Per 100,000	13.70	13.80
Families Below Poverty Level	8.00%	9.30%

METRIC PERFORMANCE

Investigations: DCF
 Lead Agency: ChildNet, Inc.
 Legal Services: DCF

CIRCUIT 15

PERMANENCY

	Circuit Performance	Metric Score	Target	Statewide Performance
Children Achieving Permanency and Not Reentering within 12 Months	97.13%	3	94.40%	90.94%
Children Achieving Permanency within 12 Months	35.39%	3	35.20%	29.01%
Children Achieving Permanency within 12 Months for Children in Out-of-Home Care 12 to 23 Months	61.84%	5	43.80%	47.44%
Children Placed with Relatives or Non-Relatives	53.80%	2	60.00%	57.83%
Moves Per 1,000 Bed Days	4.12	3	4.50	5.88
Qualitative Index for Permanency	74.54%	3	90.00%	75.71%

SAFETY

Children Not Abused During In-Home Services	99.40%	5	98.00%	99.19%
Children Not Abused During Out-of-Home Services per 100,000 Bed Days	7.88	3	9.07	6.58
Children with No Recurrence of Verified Maltreatment within 12 Months of a Prior Verified Maltreatment	93.68%	5	90.30%	93.28%
Qualitative Index for Safety	81.40%	4	90.00%	78.50%

WELL-BEING

Children Seen Every 30 Days	99.71%	3	99.50%	99.16%
Children Placed with Siblings	59.47%	2	65.00%	60.51%
Qualitative Index for Well-Being	64.32%	2	90.00%	55.11%

CIRCUIT 16



Monroe

OVERALL SCORE



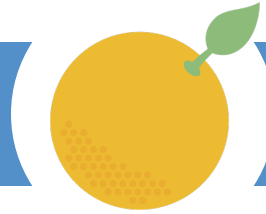
4.0

PERMANENCY



3.7

SAFETY



4.8

WELL-BEING



3.7

Circuit Statewide

Total Population	77,972	22,005,587
Population Under 18	12,038	4,314,627
Investigations	600	214,871
Removals	49	10,357
Removal Rate Per 1,000 Investigations	8.20	4.80
Children Receiving Services	140	60,293
Children Entering Care	105	22,788
Children Exiting Care	87	23,486
Entry Rate Per 1,000 in the General Population	8.70	5.30
Unemployment Rate	1.90%	2.90%
Graduation Rate	88.20%	87.30%
Suicide Rate Per 100,000	16.30	13.80
Families Below Poverty Level	6.40%	9.30%

METRIC PERFORMANCE

Investigations: DCF
 Lead Agency: Citrus Family Care Network
 Legal Services: DCF

CIRCUIT 16

PERMANENCY

	Circuit Performance	Metric Score	Target	Statewide Performance
Children Achieving Permanency and Not Reentering within 12 Months	82.35%	1	94.40%	90.94%
Children Achieving Permanency within 12 Months	58.14%	5	35.20%	29.01%
Children Achieving Permanency within 12 Months for Children in Out-of-Home Care 12 to 23 Months	100.00%	5	43.80%	47.44%
Children Placed with Relatives or Non-Relatives	55.50%	2	60.00%	57.83%
Moves Per 1,000 Bed Days	2.35	5	4.50	5.88
Qualitative Index for Permanency	87.29%	4	90.00%	75.71%

SAFETY

Children Not Abused During In-Home Services	98.77%	5	98.00%	99.19%
Children Not Abused During Out-of-Home Services per 100,000 Bed Days	0.00	5	9.07	6.58
Children with No Recurrence of Verified Maltreatment within 12 Months of a Prior Verified Maltreatment	98.70%	5	90.30%	93.28%
Qualitative Index for Safety	86.70%	4	90.00%	78.50%

WELL-BEING

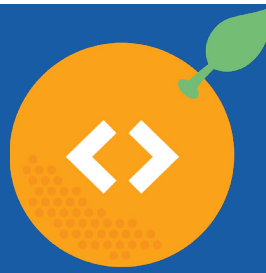
Children Seen Every 30 Days	99.94%	4	99.50%	99.16%
Children Placed with Siblings	77.78%	5	65.00%	60.51%
Qualitative Index for Well-Being	69.11%	2	90.00%	55.11%

CIRCUIT 17



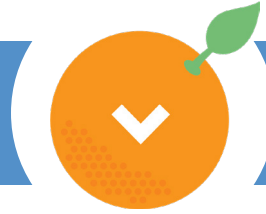
Broward

OVERALL SCORE



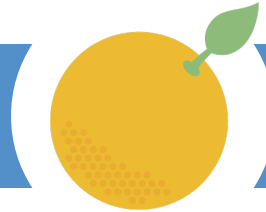
3.2

PERMANENCY



2.5

SAFETY



4.3

WELL-BEING



2.7

Circuit Statewide

Total Population	1,946,733	22,005,587
Population Under 18	406,235	4,314,627
Investigations	13,897	214,871
Removals	568	10,357
Removal Rate Per 1,000 Investigations	4.10	4.80
Children Receiving Services	2,615	60,293
Children Entering Care	1,043	22,788
Children Exiting Care	1,176	23,486
Entry Rate Per 1,000 in the General Population	2.60	5.30
Unemployment Rate	2.90%	2.90%
Graduation Rate	87.20%	87.30%
Suicide Rate Per 100,000	10.70	13.80
Families Below Poverty Level	9.40%	9.30%

METRIC PERFORMANCE

Investigations: Broward Sheriff's Office
 Lead Agency: ChildNet, Inc.
 Legal Services: DCF

CIRCUIT 17

PERMANENCY

	Circuit Performance	Metric Score	Target	Statewide Performance
Children Achieving Permanency and Not Reentering within 12 Months	82.86%	1	94.40%	90.94%
Children Achieving Permanency within 12 Months	32.61%	2	35.20%	29.01%
Children Achieving Permanency within 12 Months for Children in Out-of-Home Care 12 to 23 Months	56.81%	5	43.80%	47.44%
Children Placed with Relatives or Non-Relatives	48.49%	1	60.00%	57.83%
Moves Per 1,000 Bed Days	4.24	3	4.50	5.88
Qualitative Index for Permanency	78.87%	3	90.00%	75.71%

SAFETY

Children Not Abused During In-Home Services	99.32%	5	98.00%	99.19%
Children Not Abused During Out-of-Home Services per 100,000 Bed Days	6.08	5	9.07	6.58
Children with No Recurrence of Verified Maltreatment within 12 Months of a Prior Verified Maltreatment	92.52%	4	90.30%	93.28%
Qualitative Index for Safety	81.50%	4	90.00%	78.50%

WELL-BEING

Children Seen Every 30 Days	99.71%	3	99.50%	99.16%
Children Placed with Siblings	66.02%	3	65.00%	60.51%
Qualitative Index for Well-Being	69.41%	2	90.00%	55.11%

CIRCUIT 18



Brevard
Seminole

OVERALL SCORE



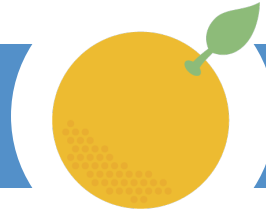
2.8

PERMANENCY



2.3

SAFETY



4.3

WELL-BEING



1.7

Circuit Statewide

Total Population
Population Under 18

1,100,941
211,152

22,005,587
4,314,627

Investigations
Removals
Removal Rate Per 1,000 Investigations

12,104
637
5.30

214,871
10,357
4.80

Children Receiving Services
Children Entering Care
Children Exiting Care
Entry Rate Per 1,000 in the General Population

3,506
1,245
1,321
5.90

60,293
22,788
23,486
5.30

Unemployment Rate
Graduation Rate
Suicide Rate Per 100,000
Families Below Poverty Level

2.80%
90.00%
17.50
6.90%

2.90%
87.30%
13.80
9.30%

METRIC PERFORMANCE

Investigations: DCF | Seminole County Sheriff's Office
 Lead Agency: Brevard Family Partnership | Embrace Families (Seminole)
 Legal Services: DCF

CIRCUIT 18

PERMANENCY

	Circuit Performance	Metric Score	Target	Statewide Performance
Children Achieving Permanency and Not Reentering within 12 Months	91.70%	2	94.40%	90.94%
Children Achieving Permanency within 12 Months	30.85%	2	35.20%	29.01%
Children Achieving Permanency within 12 Months for Children in Out-of-Home Care 12 to 23 Months	49.46%	3	43.80%	47.44%
Children Placed with Relatives or Non-Relatives	60.68%	3	60.00%	57.83%
Moves Per 1,000 Bed Days	6.27	1	4.50	5.88
Qualitative Index for Permanency	76.54%	3	90.00%	75.71%

SAFETY

Children Not Abused During In-Home Services	98.96%	5	98.00%	99.19%
Children Not Abused During Out-of-Home Services per 100,000 Bed Days	7.15	4	9.07	6.58
Children with No Recurrence of Verified Maltreatment within 12 Months of a Prior Verified Maltreatment	95.33%	5	90.30%	93.28%
Qualitative Index for Safety	78.90%	3	90.00%	78.50%

WELL-BEING

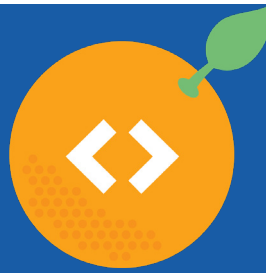
Children Seen Every 30 Days	98.95%	2	99.50%	99.16%
Children Placed with Siblings	59.59%	2	65.00%	60.51%
Qualitative Index for Well-Being	54.07%	1	90.00%	55.11%

CIRCUIT 19



Indian River
Martin
Okeechobee
St. Lucie

OVERALL SCORE



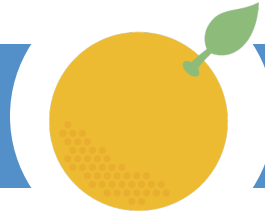
3.2

PERMANENCY



3.0

SAFETY



4.3

WELL-BEING



2.3

Circuit Statewide

Total Population
Population Under 18

753,631
99,910

22,005,587
4,314,627

Investigations
Removals
Removal Rate Per 1,000 Investigations

6,426
405
6.30

214,871
10,357
4.80

Children Receiving Services
Children Entering Care
Children Exiting Care
Entry Rate Per 1,000 in the General Population

2,016
839
642
8.40

60,293
22,788
23,486
5.30

Unemployment Rate
Graduation Rate
Suicide Rate Per 100,000
Families Below Poverty Level

3.20%
89.50%
19.20
8.00%

2.90%
87.30%
13.80
9.30%

METRIC PERFORMANCE

Investigations: DCF
 Lead Agency: Communities Connected for Kids
 Legal Services: DCF

CIRCUIT 19

PERMANENCY

	Circuit Performance	Metric Score	Target	Statewide Performance
Children Achieving Permanency and Not Reentering within 12 Months	90.23%	2	94.40%	90.94%
Children Achieving Permanency within 12 Months	38.89%	3	35.20%	29.01%
Children Achieving Permanency within 12 Months for Children in Out-of-Home Care 12 to 23 Months	71.03%	5	43.80%	47.44%
Children Placed with Relatives or Non-Relatives	57.09%	2	60.00%	57.83%
Moves Per 1,000 Bed Days	4.23	3	4.50	5.88
Qualitative Index for Permanency	79.33%	3	90.00%	75.71%

SAFETY

Children Not Abused During In-Home Services	98.56%	5	98.00%	99.19%
Children Not Abused During Out-of-Home Services per 100,000 Bed Days	9.04	3	9.07	6.58
Children with No Recurrence of Verified Maltreatment within 12 Months of a Prior Verified Maltreatment	94.41%	5	90.30%	93.28%
Qualitative Index for Safety	82.90%	4	90.00%	78.50%

WELL-BEING

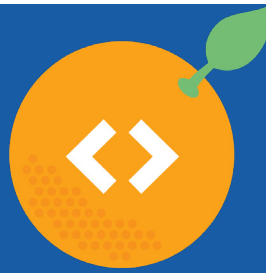
Children Seen Every 30 Days	99.90%	4	99.50%	99.16%
Children Placed with Siblings	63.64%	2	65.00%	60.51%
Qualitative Index for Well-Being	59.51%	1	90.00%	55.11%

CIRCUIT 20



Charlotte
Collier
Glades
Hendry
Lee

OVERALL SCORE



3.2

PERMANENCY



2.7

SAFETY



4.3

WELL-BEING



2.7

Circuit Statewide

Total Population
Population Under 18

1,416,458
233,881

22,005,587
4,314,627

Investigations
Removals
Removal Rate Per 1,000 Investigations

13,308
661
5.00

214,871
10,357
4.80

Children Receiving Services
Children Entering Care
Children Exiting Care
Entry Rate Per 1,000 in the General Population

4,088
1,927
1,946
8.20

60,293
22,788
23,486
5.30

Unemployment Rate
Graduation Rate
Suicide Rate Per 100,000
Families Below Poverty Level

3.10%
85.00%
16.90
8.30%

2.90%
87.30%
13.80
9.30%

METRIC PERFORMANCE

Investigations: DCF
 Lead Agency: Children's Network of Southwest Florida
 Legal Services: DCF

CIRCUIT 20

PERMANENCY

	Circuit Performance	Metric Score	Target	Statewide Performance
Children Achieving Permanency and Not Reentering within 12 Months	91.59%	2	94.40%	90.94%
Children Achieving Permanency within 12 Months	34.37%	2	35.20%	29.01%
Children Achieving Permanency within 12 Months for Children in Out-of-Home Care 12 to 23 Months	61.26%	5	43.80%	47.44%
Children Placed with Relatives or Non-Relatives	55.27%	2	60.00%	57.83%
Moves Per 1,000 Bed Days	6.67	1	4.50	5.88
Qualitative Index for Permanency	85.45%	4	90.00%	75.71%

SAFETY

Children Not Abused During In-Home Services	99.26%	5	98.00%	99.19%
Children Not Abused During Out-of-Home Services per 100,000 Bed Days	4.65	5	9.07	6.58
Children with No Recurrence of Verified Maltreatment within 12 Months of a Prior Verified Maltreatment	93.14%	4	90.30%	93.28%
Qualitative Index for Safety	79.70%	3	90.00%	78.50%

WELL-BEING

Children Seen Every 30 Days	99.89%	4	99.50%	99.16%
Children Placed with Siblings	58.72%	2	65.00%	60.51%
Qualitative Index for Well-Being	64.21%	2	90.00%	55.11%

Appendix 1: Methodology

Metrics

Metrics included in the accountability system focus on child and family outcomes and the quality of services provided by each practice area within a circuit. There are a total of 13 accountability metrics, which have been established across the domains of permanency, safety, and well-being. Three of the accountability metrics are qualitative index measures, representing the percent of all qualitative standards met within each domain.

Each metric has been clearly defined with standard levels of quality prescribed. The majority of measures and performance standards are aligned with federal standards. For the three state-specific metrics without pre-established federal standards, standards were established based on historical statewide performance.

A complete listing of the accountability metrics is provided in Appendix 2 of this report, and a complete listing of the qualitative standards included in the qualitative index scores is provided in Appendix 3 of this report.

In addition to the accountability metrics, provided alongside each of the circuit scores throughout this report is data on relevant contextual factors. While these factors are not a part of the methodology used to score circuit health, they are highly relevant to understanding and interpreting performance on the accountability metrics. The contextual factors considered throughout this report include the following: numbers of total population and the population under age 18; numbers of investigations and removals and removal rates; numbers of children receiving services, entering care, and exiting care, and entry rates; and rates for graduation, suicide, and poverty. Circuit-specific and statewide data is provided for each of these contextual factors.

Data Sources

The Florida Safe Families Network (FSFN) is the data source for all quantitative measures, and the data source for all qualitative metrics is the Qualtrics Life of Case Tool, which collects the results of the quality reviews conducted by the Department's Quality Office. Quality reviews were established based on standards outlined in federal Child and Family Services Reviews (CFSR), Florida Statute, and the Department of Children and Families Operating Procedures (CFOP).

Reviews are conducted across the lifecycle of a case to allow for near to real-time feedback and to provide supervisors opportunities to discuss or contest findings. Reviews are conducted using a representative, random population sample at a volume to provide results at 90 percent confidence with a 10 percent margin of error, by circuit. Additionally, the Department has deployed a quarterly "Benchmarking" process to ensure the inter-rater reliability and agreeability of findings. The results of this process have shown the quality review findings to be above industry standards for reliability.

Scoring

All scores provided in this report are based on the circuit's twelve-month performance, during State Fiscal Year (FY) 2022-23. The following steps were taken to calculate the metric, domain, and overall scores:

- 1. Assign Individual Metric Scores:** Each individual metric is assigned a metric score on a one through five scale following on pre-established performance thresholds. Performance thresholds are based on the relative distance between a circuit's actual performance and the established target for that metric. A list of metrics, targets, and preestablished performance thresholds can be found in Appendix I of this document.
- 2. Calculate Domain and Overall Scores:** Within each of the three domains (safety, permanency, and well-being), each metric score is averaged to determine the circuit's individual domain score. The circuit's overall score is comprised of the average of all metric scores, regardless of which domain the metric is contained within.

Appendix 2: Accountability Metrics, Targets, and Scoring Thresholds

PERMANENCY

Measure	Target	5	4	3	2	1
Children Achieving Permanency in 12 Months	35.20%	50.20%	45.20%	35.20%	20.20%	<20.2%
Children Achieving Permanency in 12-23 Months	43.80%	56.40%	52.20%	43.80%	31.20%	<31.20%
Children Achieving Permanency who Do Not Re-Enter Out-of-Home Care within 12 Months	94.40%	100.00%	97.20%	94.40%	87.35%	<87.35%
Placement Moves per 1,000 Bed Days	<4.50	3.66	3.94	4.50	5.34	>5.34
Children Placed with Relatives/Non-Relatives*	60.00%	70.95%	67.30%	60.00%	49.05%	<49.05%
Qualitative Index for Permanency	90.00%	90.00%	80.00%	70.00%	60.00%	<60%

SAFETY

Measure	Target	5	4	3	2	1
Children with No Reoccurrence of Verified Maltreatment within 12 Months of Prior Maltreatment	90.30%	93.15%	92.20%	90.30%	87.45%	<87.45%
Rate of Abuse in Out-of-Home Care per 100,000 Days in Care	<9.07	6.82	7.57	9.07	11.32	>11.32
Children Not Abused in In-Home Care*	98.00%	98.30%	98.20%	98.00%	97.70%	<97.7%
Qualitative Safety Index	90.00%	90.00%	80.00%	70.00%	60.00%	<60%

WELL-BEING

Measure	Target	5	4	3	2	1
Children Seen Every 30-Days	99.50%	100.00%	99.75%	99.50%	98.30%	<98.3%
Sibling Groups with All Siblings Placed Together*	65.00%	73.25%	70.50%	65.00%	56.75%	<56.75%
Qualitative Index for Well-Being	90.00%	90.00%	80.00%	70.00%	60.00%	<60%

*State-Specific Metrics

Appendix 3: Qualitative Index Standards by Domain

Qualitative Standards for Permanency

CFSR Item #	CPI Criteria on LOC Tool	Case Management Criteria on LOC Tool
Item 4: Stability of Foster Care Placement		<ul style="list-style-type: none"> Were all placement changes planned by the agency to achieve the child's case goals or to meet the needs of the child?
Item 5: Permanency Goal for the Child		<ul style="list-style-type: none"> Did the agency make efforts to stabilize placements when there was an indication that the placement was not stable?
Item 6: Achieving Permanency Goal		<ul style="list-style-type: none"> Was the permanency goal appropriate for the child's permanency needs and circumstances of the case?
Item 7: Placement with Siblings	<ul style="list-style-type: none"> Were concerted efforts made to place siblings together? 	<ul style="list-style-type: none"> Are the permanency goals for each child entered accurately in the FSFN?
*Item 8: Visiting with Parents and Siblings in Foster Care		<ul style="list-style-type: none"> Were efforts made to ensure visitation (or other contact) between the child and the mother, father, and the child's siblings of sufficient quality?
Item 9: Preserving Connections		<ul style="list-style-type: none"> Were efforts made to maintain the children's community connections?
Item 10: Relative Placement	<ul style="list-style-type: none"> Were concerted efforts made to place children with relatives? 	<ul style="list-style-type: none"> Were efforts made to identify and evaluate relatives as potential placements options until ruled out?
Item 11: Relationship of Child in Care with Parents		<ul style="list-style-type: none"> Were efforts made to support and maintain a positive relationship between the child and his or her mother? Were efforts made to support and maintain a positive relationship between the child and his or her father?

Qualitative Standards for Safety

CFSR Item #	CPI Criteria on LOC Tool	Case Management Criteria on LOC Tool
Item 1: Timeliness of seeing children in an investigation	<ul style="list-style-type: none"> Were diligent efforts made to see all children in the household within the assigned response priority? 	
Item 2: Services to prevent removal	<ul style="list-style-type: none"> Were concerted efforts made to provide services to prevent removal? 	<ul style="list-style-type: none"> Were concerted efforts made to provide/arrange appropriate services for the family to protect the children and prevent their entry/re-entry into out of home care?
Item 3: Risk and Safety Assessment and Management	<ul style="list-style-type: none"> Were maltreatments added during the investigation as new information was obtained? Were maltreatment findings supported within the totality of the investigation? Were risk assessment questions completed correctly based on the case record documentation? Is the Present Danger Assessment correct? Is the Impending Danger Assessment correct? Was the present danger safety plan sufficient to control identified threats? Was the impending danger safety plan sufficient to control identified danger threats? Was the present danger plan actively managed? Was the impending danger safety plan actively managed? Was an Immediate Child Safety Action Required? 	<ul style="list-style-type: none"> Were background checks completed when required? Was background check information evaluated and used to address potential danger threats? Was the family assessment sufficient to document family dynamics? Was an Immediate Child Safety Action Required? Was there a sufficient safety plan to manage identified danger threats or safety concerns? Was the safety plan monitored and updated as needed to ensure it is working effectively to protect the children from identified danger threats? Were all new safety concerns adequately addressed for children remaining in the family home? Were all safety concerns related to visitation with parents or family members adequately addressed? Were all safety concerns pertaining to the child(ren) in out of home care adequately or appropriately addressed by the agency?

*State-Specific Metrics

Qualitative Standards for Well-Being

CFSR Item #	CPI Criteria on LOC Tool	Case Management Criteria on LOC Tool
Item 12: Needs and Services of Child, Parents, and Foster Parents	<ul style="list-style-type: none"> • Were attempts made to connect the family to appropriate services for children determined to be safe but high risk? 	<ul style="list-style-type: none"> • Was a Comprehensive Behavioral Health Assessment (CBHA) completed for the child upon entering out of home care? • Was a CBHA updated based on case circumstances? • Was a CBHA or other mental health assessment used as part of the case manager's assessment? • Were assessments arranged that accurately identified the children's needs? • Were appropriate services provided to meet any additional needs of the children? • Were assessments arranged or conducted to accurately identify the mother's and father's needs? • Were appropriate services provided to meet the identified needs of the mother and father? • Were ongoing assessments conducted or arranged to identify the service needs of the caregiver or pre-adoptive parents? • Has the child welfare professional had ongoing contact with service providers involved with the family?
Item 13: Child and Family Involvement in Case Planning		<ul style="list-style-type: none"> • Were efforts made to actively involve the child in the case planning process? • Were efforts made to actively involve the mother and father in the case planning process?
Item 14: Caseworker Visits with the Child	<ul style="list-style-type: none"> • Were quality interviews conducted with the child(ren)? 	<ul style="list-style-type: none"> • Was the frequency and quality of the visits with the child(ren) sufficient to address safety, permanency, and well-being and promote achievement of case goals?
Item 15: Caseworker Visits with Parents	<ul style="list-style-type: none"> • Were quality interviews conducted with the parents/ caregivers/household members? 	<ul style="list-style-type: none"> • Were conditions for return discussed with the mother and father on an ongoing basis? • Were quality of case manager visits with the mother and father sufficient to ensure child safety and evaluate case plan progress?
Item 16: Educational Needs of the Child		<ul style="list-style-type: none"> • Were appropriate services provided to meet the child's educational needs?
Item 17: Physical Health of the Child		<ul style="list-style-type: none"> • Were the child's health records up-to-date in the case plan and were identified issues in the case plan? • Were appropriate services provided to meet the child's identified dental needs? • Were appropriate services provided to meet the child's identified medical needs?
Item 18: Mental/Behavioral Health of the Child		<ul style="list-style-type: none"> • Did the agency provide appropriate oversight of prescription medication for mental/behavioral health issues? • Were appropriate services provided to meet the children's identified behavioral health needs?

For more information and detailed data that was used in the creation of this report, please refer to: www.MyFLFamilies.com/Accountability.

ENDNOTES: Data for the general population and population under the age of 18, and the graduation, suicide, and poverty rates provided throughout this report were obtained from the Florida Department of Health's Florida Health Charts.

