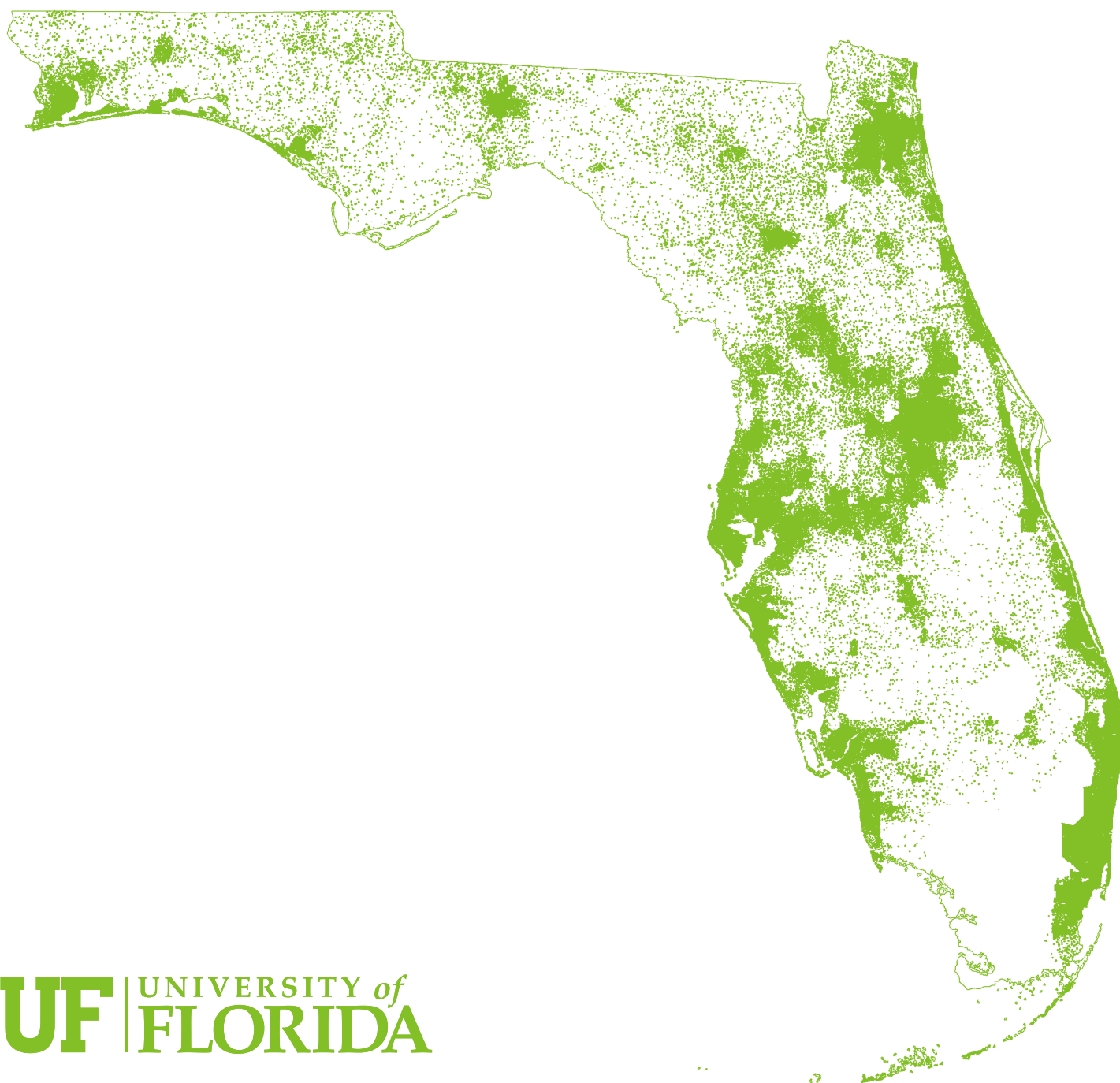


Florida Estimates of Population 2020



Florida Estimates of Population 2020

April 1, 2020

**Bureau of Economic and Business Research
College of Liberal Arts and Sciences
University of Florida
720 SW 2nd Avenue, Suite 150
P.O. Box 117148
Gainesville, Florida 32611-7148**

**Phone: (352) 392-0171
Fax: (888) 534-2404
www.bebr.ufl.edu**

Copyright © 2020 by the University of Florida

University of Florida

W. Kent Fuchs, President

College of Liberal Arts and Sciences

Dave Richardson, Dean

Bureau of Economic and Business Research

Christopher McCarty, Director

Population Program

Stefan Rayer, Population Program Director

Richard Doty, GIS Coordinator/Research Demographer

Suzanne Roulston-Doty, GIS Project Manager/Research Demographer

Jason Teisinger, GIS Project Manager

Ying Wang, Research Demographer



Table of Contents

Methodology _____	1
Table 1. Estimates of Population by County and City in Florida, 2020 _____	5
Table 2. Components of Population Change for Counties in Florida, 2010 to 2020 _____	19
Table 3. Population and Population Change for Counties in Florida, 1990 to 2020 _____	21
Table 4. Population and Population Change for Metropolitan Statistical Areas in Florida, 1990 to 2020 _____	23
Table 5. Population Change by Decade for Regional Planning Councils in Florida, 1990 to 2020 _____	25
Table 6. Rank of Florida Counties by Population Size in 2020 and Population Distribution, 1990 to 2020 _____	27
Table 7. Rank of Florida Counties by Percent Change in Population, 2010 to 2020 _____	29
Figure 1. Percent Change in Population, 2010 to 2020 _____	30
Table 8. Rank of Florida Counties by Population Change, 2010 to 2020 _____	31
Figure 2. Population Change, 2010 to 2020 _____	32
Table 9. Rank of Top 100 Cities in Florida by Population Size, 2000 to 2020 _____	33
Table 10. Rank of Top 100 Cities in Florida by Percent Change in Population, 2010 to 2020 _____	35
Table 11. Rank of Top 100 Cities in Florida by Population Change, 2010 to 2020 _____	36
Table 12. Age Distribution (Percentage) of the Population of Florida and Its Counties, 1990 to 2019 _____	37
Table 13. Rank of Florida Counties by Percent of Population Aged 17 and Younger, 2019 _____	41
Figure 3. Percent of Population Aged 17 and Younger, 2019 _____	42
Table 14. Rank of Florida Counties by Percent of Population Aged 65 and Older, 2019 _____	43
Figure 4. Percent of Population Aged 65 and Older, 2019 _____	44
Table 15. Rank of Florida Counties by Percent of Black Population, 2019 _____	45
Figure 5. Black Population as Percent of Total Population, 2019 _____	46
Table 16. Rank of Florida Counties by Percent of Hispanic Population, 2019 _____	47
Figure 6. Hispanic Population as Percent of Total Population, 2019 _____	48
Table 17. Population per Square Mile for Florida Counties, 2000 to 2020 _____	49
Figure 7. Population Per Square Mile, 2020 _____	51
Table 18. Location of Florida Cities _____	52

Methodology for Florida Estimates of Population: April 1, 2020

Guidelines for Population Estimates

This report provides population estimates for Florida and each of its counties and incorporated cities, as of April 1, 2020. These estimates were prepared under a contractual agreement between the Florida Legislature and the Bureau of Economic and Business Research (BEBR) at the University of Florida. The basic guidelines for producing population estimates were established by the 1972 Florida Legislature in Chapter 23, Section 23.019, Florida Statutes, entitled "Population census determination." These guidelines have been revised several times since 1972, the most recent being Section 186.901 of the 2014 Florida Statutes, which states:

(1) The Office of Economic and Demographic Research shall annually provide to the Executive Office of the Governor population estimates of local governmental units as of April 1 of each year, utilizing accepted statistical practices. The population of local governments provided by the Office of Economic and Demographic Research shall apply to any revenue sharing formula with local governments under the provisions of ss. 218.20-218.26, part II of chapter 218. The Office of Economic and Demographic Research shall additionally provide the Executive Office of the Governor population estimates for municipal annexations or consolidations occurring during the period April 1 through February 28, and the Executive Office of the Governor shall include these estimates in its certification to the Department of Revenue for the annual revenue-sharing calculation.

(2) (a) Population shall be computed as the number of residents, employing the same general guidelines used by the United States Bureau of the Census.

(b) For the purpose of revenue-sharing distribution formulas and distribution proportions for the local government half-cent sales tax, inmates and patients residing in institutions operated by the Federal Government, the Department of Corrections, the Department of Health, or the Department of Children and Families shall not be considered to be residents of the

governmental unit in which the institutions are located.

(c) Nothing herein shall be construed to prohibit the separate determination of any categories of persons, whether resident or nonresident.

(3) In cases of annexation or consolidation, local governments shall be required to submit to the Executive Office of the Governor, within 30 days following annexation or consolidation, a statement as to the population census effect of the action.

(4) Estimates of inmates and patients pursuant to paragraph (2)(b) shall be separately stated in population reports issued pursuant to this section.

It should be noted that these estimates refer solely to permanent residents of the state of Florida. According to Census Bureau guidelines, one's permanent residence is the place one lives and sleeps most of the time. Consequently, temporary residents such as tourists and snowbirds are not included in these estimates. Many places in Florida have large numbers of temporary residents during certain times of the year, making their total de facto populations much larger than their permanent resident populations.

Estimation Methodology

The Bureau of Economic and Business Research (BEBR) makes population estimates for every county and subcounty area in Florida, with subcounty areas defined as incorporated cities, towns and villages, and the unincorporated balance of each county. County estimates are calculated as the sum of the subcounty estimates for each county, and the state estimate is calculated as the sum of the county estimates. The estimates refer solely to permanent residents of Florida; they do not include seasonal or other types of temporary residents.

The estimates are produced using the housing unit

method, in which changes in population are based on changes in occupied housing units (or households). This is the most commonly used method for making local population estimates in the United States because it can utilize a wide variety of data sources, can be applied at any level of geography, and can produce estimates that are at least as accurate as those produced by any other method.

The foundation of the housing unit method is the fact that almost everyone lives in some type of housing structure, whether a traditional single-family unit, an apartment, a mobile home, a college dormitory, or a state prison. The population of any geographic area can be calculated as the number of occupied housing units (households) times the average number of persons per household (PPH), plus the number of persons living in group quarters such as college dormitories, military barracks, nursing homes, and prisons:

$$P_t = (H_t \times PPH_t) + GQ_t$$

where P_t is the population at time t , H_t is the number of occupied housing units at time t , PPH_t is the average number of persons per household at time t , and GQ_t is the group quarters population at time t . Estimates of the number of people without permanent living quarters (e.g., the homeless population) are included in estimates of the group quarters population.

This is an identity, not an estimate. If these three components were known exactly, the total population would also be known. The problem, of course, is that these components are almost never known exactly. Rather, they must be estimated from various data sources, using one or more of several possible techniques. In this report, we describe the data and techniques used to develop population estimates for Florida's counties and subcounty areas for April 1, 2020.

Households

Census definitions require a person to be counted as an inhabitant of his/her usual place of residence, which is generally construed to mean the place where she/he lives and sleeps most of the time. This place is

not necessarily the same as one's legal or voting residence. A household is the person or group of people occupying a housing unit; by definition, the number of occupied housing units is the same as the number of households. Households refer solely to permanent residents and a housing unit is classified as vacant even when it is continuously occupied, if all the occupants are temporary residents staying only for a few days, weeks, or months.

BEBR uses three different data sources to estimate the number of households in Florida. Our primary data source is active residential electric customers. We collect these data from each of the state's 53 electric utility companies. Households can be estimated by constructing a ratio of households to active residential electric customers using data from the most recent census year (e.g., 2010) and multiplying that ratio times the number of active residential customers in some later year (e.g., 2020). This procedure assumes that no changes have occurred in electric company bookkeeping practices, in the vacancy rate of active residential electric customers, or in the proportion of those customers who are permanent residents. Although changes do occur, they are generally fairly small. In some places we adjust the household/electric customer ratio to account for changes in the vacancy rate or the proportion of housing units occupied by permanent residents.

We sometimes filter electric customer data to exclude minimum use customers. Minimum use customers are those using less than 200 kilowatt (kWh) hours per month. We believe these customers represent seasonal or other part-time residents or vacant units, and excluding them may give a more accurate measure of permanent residents. Because we estimate the change in population since the 2010 Census, excluding minimum use customers can capture changes in unit occupancy over that period. These data are not available for all areas of the state, but in places in which the data are available and appear to be reliable, we often use them in conjunction with other data sources.

Our second data source is residential building permits, as collected and distributed by the U.S. Department of

Commerce. The housing inventory in 2020 for a city or county that issues building permits can be estimated by adding permits issued since 2010 to the units counted in the 2010 census and subtracting units lost to destruction, demolition, or conversion to other uses. The time lag between the issuance of a permit and the completion of a unit is assumed to be three months for single-family units and fifteen months for multifamily units. Building permits are not issued for mobile homes, but proxies can be derived from records of shipments to mobile home dealers in Florida. Creating a housing inventory for an entire county requires complete permit data for every permitting agency within the county. Although such data are not always available, coverage is sufficient in most Florida cities and counties to provide useful information.

There are no readily available data sources providing comprehensive up-to-date information on occupancy rates that are as reliable as those produced by the latest decennial census. Accurate information can be obtained through special censuses or large sample surveys, but in most instances these methods are too expensive to be feasible. A common solution is to use the occupancy rates reported in the most recent decennial census. We base our occupancy estimates on these values, but we may make adjustments to account for factors reflecting changes in occupancy rates over time. Occupancy changes since 2010 may be captured in places where we use electrical customer data and are able to exclude minimum use customers. Additional factors may include data from the U.S. Census Bureau's American Community Survey (ACS), in cases where it shows statistically significant trends over time since the last decennial census.

The product of the inventory figure and the occupancy rate provides an estimate of the number of households. There are several potential problems with this estimate. Time lags between the issuance of permits and the completion of units may vary from place to place and from year to year. The proportion of permits resulting in completed units is usually unknown. Data on demolitions and conversions are incomplete and data on mobile homes must be estimated indirectly. Reliable estimates of changes in occupancy

rates are generally unavailable. Certificate-of-occupancy data can eliminate problems related to completion rates and time lags but not those related to occupancy rates, demolitions, and conversions. Although these problems limit the usefulness of the data in some places, building permit data often provide reasonably accurate estimates of households.

Our third data source for estimates is the number of homestead exemptions by county reported by the Florida Department of Revenue. Households can be estimated by constructing a ratio of households to exemptions using data from the most recent census year (e.g., 2010) and multiplying that ratio times the number of exemptions in some later year (e.g., 2020). An important advantage of these data is that they cover only housing units occupied by permanent residents, thereby excluding the impact of seasonal and other non-permanent residents. The primary disadvantage is that the data do not include households occupied by renters or other non-homeowners, but those households often change at a similar rate to the households with homestead exemptions. Homestead exemption data is also available from each county's property appraiser at the property parcel level, which can be summarized by subcounty areas. We occasionally use these data to inform our decision making in places where our other primary data sources show significantly different results.

Electric customer, building permit, and homestead exemption data all provide useful information regarding changes in households. Previous research on BEBR population estimates has shown that household estimates based on electric customer data are—on average—more accurate than those based on building permit and other data. However, we use our professional judgment to decide which data source(s) to use in each specific county and subcounty area. In many instances, we use averages of estimates from more than one data source. We also sometimes use GIS-based property parcel data (along with year-built information and detailed land use codes from the Florida Department of Revenue) to evaluate which data source is best for a particular place.

Persons per Household

The second component of the housing unit method is the average number of persons per household (PPH). Florida's PPH dropped steadily from 3.22 in 1950 to 2.46 in 1990 but then leveled off, remaining constant between 1990 and 2000 before rising to 2.48 in 2010. There is a substantial variation among local areas in Florida, with values in 2010 ranging from 2.1 to 3.1 for counties and from less than 1.4 to more than 4.0 for subcounty areas. PPH values have risen over time in some cities and counties and declined in others.

For each county and subcounty area, we base our PPH estimates on the local PPH value in the most recent census (e.g., 2010). In some instances, we estimate changes in PPH since that census using statistically significant trends in data from the American Community Survey or changes in the mix of single-family, multi-family, and mobile home units since the last census. Again, we use our professional judgment to decide which data sources and techniques to use in each county and subcounty area.

Group Quarters Population

The household population is calculated as the product of households and PPH. To obtain an estimate of the total population, we must add an estimate of the group quarters population. In most places, we estimate the group quarters population by assuming that it accounts for the same proportion of total population in 2020 as it did in 2010. For example, if the group quarters population accounted for 2% of the total population in 2010, we assume that it accounted for 2% in 2020. In places where there are large group quarters facilities, we collect data directly from the administrators of those facilities and add those estimates to the other group quarters population. Inmates in state and federal institutions are accounted for separately in all local areas; these data are available from the Federal Bureau of Prisons, the Florida Department of Corrections, the Florida Department of Veteran Affairs, the Florida Agency for Persons with Disabilities, the Florida Department of Health, the

Florida Department of Juvenile Justice and the Florida Department of Children and Families. The total population estimate is made by adding the estimate of the group quarters population to the estimate of the household population.

Conclusion

The population estimates produced by BEBR are calculated by multiplying the number of households by the average number of persons per household and adding the number of persons living in group quarters. This methodology is conceptually simple but effective. It utilizes data that are available for all local areas, its components respond rapidly to population movements, and it can be applied systematically and uniformly everywhere in the state. A comparison of population estimates with census results for 1980, 1990, 2000, and 2010 showed the BEBR estimates to be quite accurate, especially when compared to other sets of estimates. We believe the housing unit method is the most effective method for making city and county population estimates in Florida and that it produces reliable estimates that provide a solid foundation for budgeting, planning, and analysis.

Notes

These population estimates were produced prior to the release of Census 2020. Once the new decennial census counts are available, they will supersede the population estimates shown in this report.

The population numbers for 1990 and 2000 shown in this report include all official corrections made by the U.S. Census Bureau. Corrections for 2010 include all corrections received from the Census Bureau's Count Question Resolution program through February 11, 2014. Consequently, the census numbers for some cities or counties may differ from those published previously.

Acknowledgement

Funding for these estimates was provided by the Florida Legislature.

Table 1. Estimates of Population by County and City in Florida, 2020

County, City, and State	April 1 2020 Estimate	Total Change 2010–2020	April 1 2010 Census	Revenue Sharing Use Only ‡	
				Inmates	Estimates less Inmates April 1, 2020
Alachua County	271,588	24,252	247,336	1,132	270,456
Alachua	10,470	1,411	9,059	0	10,470
Archer	1,204	86	1,118	0	1,204
Gainesville*	135,097	10,621	124,476	663	134,434
Hawthorne	1,463	46	1,417	0	1,463
High Springs	6,652	1,302	5,350	0	6,652
La Crosse	395	35	360	0	395
Micanopy	669	69	600	0	669
Newberry	6,873	1,923	4,950	0	6,873
Waldo	958	-57	1,015	0	958
UNINCORPORATED*	107,807	8,816	98,991	469	107,338
Baker County	28,532	1,417	27,115	2,421	26,111
Glen St. Mary	457	20	437	0	457
Macclenny	7,186	812	6,374	0	7,186
UNINCORPORATED	20,889	585	20,304	2,421	18,468
Bay County	174,410	5,558	168,852	1,110	173,300
Callaway	14,662	257	14,405	0	14,662
Lynn Haven	20,235	1,742	18,493	5	20,230
Mexico Beach	773	-299	1,072	0	773
Panama City*	34,517	-988	35,505	98	34,419
Panama City Beach	13,691	1,673	12,018	0	13,691
Parker	3,865	-452	4,317	0	3,865
Springfield	8,938	35	8,903	0	8,938
UNINCORPORATED*	77,729	3,590	74,139	1,007	76,722
Bradford County	28,725	205	28,520	3,827	24,898
Brooker	330	-8	338	0	330
Hampton	499	-1	500	0	499
Lawtey	728	-2	730	0	728
Starke	5,460	11	5,449	11	5,449
UNINCORPORATED	21,708	205	21,503	3,816	17,892
Brevard County	606,671	63,295	543,376	185	606,486
Cape Canaveral	10,342	430	9,912	0	10,342
Cocoa	19,327	2,187	17,140	0	19,327
Cocoa Beach	11,391	160	11,231	0	11,391
Grant-Valkaria	4,492	642	3,850	0	4,492
Indialantic	2,882	162	2,720	0	2,882
Indian Harbour Beach	8,751	526	8,225	0	8,751
Malabar	3,033	276	2,757	0	3,033
Melbourne*	84,402	8,197	76,205	29	84,373
Melbourne Beach	3,150	49	3,101	0	3,150
Melbourne Village	677	15	662	0	677
Palm Bay	118,568	15,378	103,190	0	118,568

Table 1. Estimates of Population by County and City in Florida, 2020

(Continued)

County, City, and State	April 1 2020 Estimate	Total Change 2010–2020	April 1 2010 Census	<u>Revenue Sharing Use Only ‡</u>	
				Inmates	Estimates less Inmates April 1, 2020
Brevard County (Continued)					
Palm Shores	1,137	237	900	0	1,137
Rockledge	27,946	3,020	24,926	17	27,929
Satellite Beach	10,887	778	10,109	0	10,887
Titusville	48,685	4,924	43,761	7	48,678
West Melbourne	25,385	7,030	18,355	0	25,385
UNINCORPORATED*	225,616	19,284	206,332	132	225,484
Broward County					
Coconut Creek	1,932,212	184,146	1,748,066	887	1,931,325
Cooper City	58,803	5,894	52,909	0	58,803
Coral Springs	34,006	5,459	28,547	6	34,000
Dania Beach	129,263	8,167	121,096	0	129,263
Davie	32,215	2,576	29,639	0	32,215
Deerfield Beach	105,050	13,058	91,992	6	105,044
Fort Lauderdale	80,178	5,160	75,018	0	80,178
Hallandale Beach	189,321	23,800	165,521	33	189,288
Hillsboro Beach	39,945	2,832	37,113	0	39,945
Hollywood	1,937	62	1,875	0	1,937
Hollywood	151,818	11,050	140,768	0	151,818
Lauderdale-By-The-Sea	6,305	249	6,056	0	6,305
Lauderdale Lakes	36,527	3,934	32,593	0	36,527
Lauderhill	72,507	5,620	66,887	0	72,507
Lazy Lake	28	4	24	0	28
Lighthouse Point	10,536	192	10,344	0	10,536
Margate	59,351	6,067	53,284	0	59,351
Miramar	138,873	16,832	122,041	0	138,873
North Lauderdale	45,549	4,526	41,023	0	45,549
Oakland Park	45,709	4,346	41,363	0	45,709
Parkland	35,438	11,476	23,962	0	35,438
Pembroke Park	6,373	271	6,102	0	6,373
Pembroke Pines*	168,949	14,930	154,019	623	168,326
Plantation	90,802	5,847	84,955	0	90,802
Pompano Beach	112,941	13,096	99,845	140	112,801
Sea Ranch Lakes	682	12	670	0	682
Southwest Ranches	7,786	441	7,345	0	7,786
Sunrise	94,333	9,894	84,439	0	94,333
Tamarac	66,089	5,662	60,427	0	66,089
Weston	67,438	2,105	65,333	0	67,438
West Park	15,228	1,072	14,156	0	15,228
Wilton Manors	12,857	1,225	11,632	0	12,857
UNINCORPORATED*	15,375	-1,713	17,088	79	15,296
Calhoun County					
Altha	14,489	-136	14,625	1,569	12,920
Blountstown	536	0	536	0	536
UNINCORPORATED	2,414	-100	2,514	0	2,414
UNINCORPORATED	11,539	-36	11,575	1,569	9,970

Table 1. Estimates of Population by County and City in Florida, 2020

(Continued)

County, City, and State	April 1 2020 Estimate	Total Change 2010–2020	April 1 2010 Census	Revenue Sharing Use Only ‡	
				Inmates	Estimates less Inmates April 1, 2020
Charlotte County	187,904	27,926	159,978	1,242	186,662
Punta Gorda	20,405	3,764	16,641	0	20,405
UNINCORPORATED	167,499	24,162	143,337	1,242	166,257
Citrus County	149,383	8,147	141,236	118	149,265
Crystal River	3,190	82	3,108	0	3,190
Inverness	7,375	165	7,210	0	7,375
UNINCORPORATED	138,818	7,900	130,918	118	138,700
Clay County	219,575	28,710	190,865	0	219,575
Green Cove Springs	8,054	1,146	6,908	0	8,054
Keystone Heights	1,385	35	1,350	0	1,385
Orange Park	8,692	280	8,412	0	8,692
Penney Farms	789	40	749	0	789
UNINCORPORATED	200,655	27,209	173,446	0	200,655
Collier County	387,450	65,930	321,520	14	387,436
Everglades	430	30	400	0	430
Marco Island	17,595	1,182	16,413	0	17,595
Naples	21,063	1,526	19,537	0	21,063
UNINCORPORATED	348,362	63,192	285,170	14	348,348
Columbia County	70,617	3,086	67,531	3,518	67,099
Fort White	605	38	567	0	605
Lake City	12,303	257	12,046	291	12,012
UNINCORPORATED	57,709	2,791	54,918	3,227	54,482
DeSoto County	37,082	2,220	34,862	2,326	34,756
Arcadia	7,986	349	7,637	0	7,986
UNINCORPORATED	29,096	1,871	27,225	2,326	26,770
Dixie County	16,663	241	16,422	1,678	14,985
Cross City	1,726	-2	1,728	0	1,726
Horseshoe Beach	169	0	169	0	169
UNINCORPORATED	14,768	243	14,525	1,678	13,090
Duval County	982,080	117,817	864,263	590	981,490
Atlantic Beach	13,824	1,169	12,655	0	13,824
Baldwin	1,419	-6	1,425	0	1,419
Jacksonville	936,250	114,466	821,784	590	935,660
Jacksonville Beach	23,394	2,032	21,362	0	23,394
Neptune Beach	7,193	156	7,037	0	7,193

Table 1. Estimates of Population by County and City in Florida, 2020

(Continued)

County, City, and State	April 1 2020 Estimate	Total Change 2010–2020	April 1 2010 Census	Revenue Sharing Use Only ‡	
				Inmates	Estimates less Inmates April 1, 2020
Escambia County	323,714	26,095	297,619	2,353	321,361
Century	1,782	84	1,698	0	1,782
Pensacola	55,498	3,575	51,923	22	55,476
UNINCORPORATED	266,434	22,436	243,998	2,331	264,103
Flagler County	114,173	18,477	95,696	0	114,173
Beverly Beach	382	44	338	0	382
Bunnell	3,507	831	2,676	0	3,507
Flagler Beach (part)	4,700	276	4,424	0	4,700
Marineland (part)	6	-10	16	0	6
Palm Coast	89,437	14,257	75,180	0	89,437
UNINCORPORATED	16,141	3,079	13,062	0	16,141
Franklin County	11,864	315	11,549	1,252	10,612
Apalachicola	2,350	119	2,231	0	2,350
Carrabelle	2,640	-138	2,778	987	1,653
UNINCORPORATED	6,874	334	6,540	265	6,609
Gadsden County	46,226	-163	46,389	3,033	43,193
Chattahoochee	3,302	-350	3,652	999	2,303
Greensboro	611	9	602	0	611
Gretna	1,667	207	1,460	0	1,667
Havana	1,880	126	1,754	0	1,880
Midway	3,467	463	3,004	0	3,467
Quincy	7,919	-53	7,972	403	7,516
UNINCORPORATED	27,380	-565	27,945	1,631	25,749
Gilchrist County	18,269	1,330	16,939	777	17,492
Bell	542	86	456	0	542
Fanning Springs (part)	389	111	278	0	389
Trenton	2,234	235	1,999	0	2,234
UNINCORPORATED	15,104	898	14,206	777	14,327
Glades County	13,609	725	12,884	958	12,651
Moore Haven	1,778	98	1,680	0	1,778
UNINCORPORATED	11,831	627	11,204	958	10,873
Gulf County	14,724	-1,139	15,863	1,088	13,636
Port St. Joe	3,741	296	3,445	0	3,741
Wewahitchka	1,992	11	1,981	0	1,992
UNINCORPORATED	8,991	-1,446	10,437	1,088	7,903

Table 1. Estimates of Population by County and City in Florida, 2020

(Continued)

County, City, and State	April 1 2020 Estimate	Total Change 2010–2020	April 1 2010 Census	Revenue Sharing Use Only ‡	
				Inmates	Estimates less Inmates April 1, 2020
Hamilton County	14,570	-229	14,799	2,295	12,275
Jasper	2,644	-1,902	4,546	1,033	1,611
Jennings	869	-9	878	0	869
White Springs	822	45	777	0	822
UNINCORPORATED	10,235	1,637	8,598	1,262	8,973
Hardee County	27,443	-288	27,731	1,676	25,767
Bowling Green	2,913	-17	2,930	0	2,913
Wauchula	5,240	239	5,001	0	5,240
Zolfo Springs	1,790	-37	1,827	0	1,790
UNINCORPORATED	17,500	-473	17,973	1,676	15,824
Hendry County	40,953	1,813	39,140	0	40,953
Clewiston	8,021	866	7,155	0	8,021
LaBelle	5,151	511	4,640	0	5,151
UNINCORPORATED	27,781	436	27,345	0	27,781
Hernando County	192,186	19,408	172,778	502	191,684
Brooksville	8,983	1,264	7,719	0	8,983
Weeki Wachee**	9	-3	12	0	9
UNINCORPORATED	183,194	18,147	165,047	502	182,692
Highlands County	104,834	6,048	98,786	24	104,810
Avon Park	11,201	2,365	8,836	0	11,201
Lake Placid	2,840	617	2,223	0	2,840
Sebring	11,208	717	10,491	0	11,208
UNINCORPORATED	79,585	2,349	77,236	24	79,561
Hillsborough County	1,478,759	249,533	1,229,226	655	1,478,104
Plant City	39,846	5,125	34,721	0	39,846
Tampa	392,953	57,244	335,709	483	392,470
Temple Terrace	26,832	2,291	24,541	0	26,832
UNINCORPORATED	1,019,128	184,873	834,255	172	1,018,956
Holmes County	20,001	74	19,927	1,489	18,512
Bonifay	2,709	-84	2,793	0	2,709
Esto	367	3	364	0	367
Noma	182	-29	211	0	182
Ponce de Leon	541	-57	598	0	541
Westville	355	66	289	0	355
UNINCORPORATED	15,847	175	15,672	1,489	14,358
Indian River County	158,834	20,806	138,028	0	158,834
Fellsmere	5,668	471	5,197	0	5,668
Indian River Shores	4,378	477	3,901	0	4,378
Orchid	428	13	415	0	428

Table 1. Estimates of Population by County and City in Florida, 2020

(Continued)

County, City, and State	April 1 2020 Estimate	Total Change 2010–2020	April 1 2010 Census	<u>Revenue Sharing Use Only ‡</u>	
				Inmates	Estimates less Inmates April 1, 2020
Indian River County (Continued)					
Sebastian	25,658	3,729	21,929	0	25,658
Vero Beach*	16,869	1,646	15,223	0	16,869
UNINCORPORATED*	105,833	14,470	91,363	0	105,833
Jackson County					
Alford	46,587	-3,159	49,746	5,570	41,017
Bascom	490	1	489	0	490
Campbellton	120	-1	121	0	120
Cottondale	214	-16	230	0	214
Graceville	861	-72	933	0	861
Grand Ridge	2,224	-54	2,278	0	2,224
Greenwood	835	-57	892	0	835
Jacob City	677	-9	686	0	677
Malone	274	24	250	0	274
Marianna	1,777	-311	2,088	1,347	430
Sneads	6,215	113	6,102	324	5,891
UNINCORPORATED	1,701	-148	1,849	0	1,701
	31,199	-2,629	33,828	3,899	27,300
Jefferson County					
Monticello	14,394	-367	14,761	830	13,564
UNINCORPORATED	2,437	-69	2,506	0	2,437
	11,957	-298	12,255	830	11,127
Lafayette County					
Mayo	8,690	-180	8,870	1,397	7,293
UNINCORPORATED	1,217	-20	1,237	0	1,217
	7,473	-160	7,633	1,397	6,076
Lake County*					
Astatula	366,742	69,695	297,047	1,034	365,708
Clermont	1,921	111	1,810	0	1,921
Eustis	44,301	15,559	28,742	0	44,301
Fruitland Park	21,594	3,036	18,558	0	21,594
Groveland	10,206	6,128	4,078	0	10,206
Howey-in-the-Hills	20,510	11,781	8,729	0	20,510
Lady Lake	1,702	604	1,098	0	1,702
Leesburg	15,754	1,828	13,926	0	15,754
Mascotte	24,539	4,422	20,117	0	24,539
Minneola	6,447	1,346	5,101	0	6,447
Montverde	13,175	3,772	9,403	0	13,175
Mount Dora	1,901	438	1,463	0	1,901
Tavares	15,200	2,830	12,370	0	15,200
Umatilla	17,395	3,444	13,951	0	17,395
UNINCORPORATED*	4,196	740	3,456	0	4,196
	167,901	13,656	154,245	1,034	166,867

Table 1. Estimates of Population by County and City in Florida, 2020

(Continued)

County, City, and State	April 1 2020 Estimate	Total Change 2010–2020	April 1 2010 Census	Revenue Sharing Use Only ‡	
				Inmates	Estimates less Inmates April 1, 2020
Lee County	750,493	131,739	618,754	221	750,272
Bonita Springs*	55,645	11,788	43,857	6	55,639
Cape Coral	187,307	33,002	154,305	28	187,279
Estero***	33,120	33,120	0	0	33,120
Fort Myers	92,599	30,301	62,298	15	92,584
Fort Myers Beach	6,558	281	6,277	0	6,558
Sanibel	6,849	380	6,469	0	6,849
UNINCORPORATED*	368,415	22,867	345,548	172	368,243
Leon County	299,484	23,997	275,487	1,210	298,274
Tallahassee	198,627	17,251	181,376	1,210	197,417
UNINCORPORATED	100,857	6,746	94,111	0	100,857
Levy County	41,699	898	40,801	0	41,699
Bronson	1,181	68	1,113	0	1,181
Cedar Key	726	24	702	0	726
Chiefland	2,217	-28	2,245	0	2,217
Fanning Springs (part)	517	31	486	0	517
Inglis	1,305	-20	1,325	0	1,305
Otter Creek	118	-16	134	0	118
Williston	2,906	138	2,768	0	2,906
Yankeetown	509	7	502	0	509
UNINCORPORATED	32,220	694	31,526	0	32,220
Liberty County	8,575	210	8,365	1,749	6,826
Bristol	912	-84	996	0	912
UNINCORPORATED	7,663	294	7,369	1,749	5,914
Madison County	18,954	-270	19,224	1,334	17,620
Greenville	756	-87	843	21	735
Lee	335	-17	352	0	335
Madison*	2,899	-150	3,049	0	2,899
UNINCORPORATED*	14,964	-16	14,980	1,313	13,651
Manatee County	398,503	75,670	322,833	136	398,367
Anna Maria	1,617	114	1,503	0	1,617
Bradenton	58,621	9,075	49,546	37	58,584
Bradenton Beach	1,188	17	1,171	0	1,188
Holmes Beach	3,913	77	3,836	0	3,913
Longboat Key (part)	2,481	83	2,398	0	2,481
Palmetto	13,661	1,055	12,606	0	13,661
UNINCORPORATED	317,022	65,249	251,773	99	316,923

Table 1. Estimates of Population by County and City in Florida, 2020

(Continued)

County, City, and State	April 1 2020 Estimate	Total Change 2010–2020	April 1 2010 Census	Revenue Sharing Use Only ‡	
				Inmates	Estimates less Inmates April 1, 2020
Marion County*	368,135	36,832	331,303	5,323	362,812
Belleview	5,330	838	4,492	5	5,325
Dunnellon	1,864	131	1,733	0	1,864
McIntosh	486	34	452	0	486
Ocala	62,023	5,708	56,315	216	61,807
Reddick	577	71	506	0	577
UNINCORPORATED*	297,855	30,050	267,805	5,102	292,753
Martin County	161,301	14,983	146,318	2,060	159,241
Indiantown****	6,822	6,822	0	0	6,822
Jupiter Island	847	30	817	0	847
Ocean Breeze	428	73	355	0	428
Sewall's Point	2,127	131	1,996	0	2,127
Stuart	16,793	1,200	15,593	24	16,769
UNINCORPORATED	134,284	6,727	127,557	2,036	132,248
Miami-Dade County*	2,832,794	336,337	2,496,457	9,491	2,823,303
Aventura	38,041	2,279	35,762	0	38,041
Bal Harbour	2,932	419	2,513	0	2,932
Bay Harbor Islands	6,091	463	5,628	0	6,091
Biscayne Park	3,181	126	3,055	0	3,181
Coral Gables*	51,133	4,357	46,776	0	51,133
Cutler Bay	45,480	5,194	40,286	0	45,480
Doral*	71,314	25,605	45,709	0	71,314
El Portal	2,146	-179	2,325	0	2,146
Florida City	13,405	2,160	11,245	0	13,405
Golden Beach	943	24	919	0	943
Hialeah*	239,956	15,289	224,667	0	239,956
Hialeah Gardens	23,644	1,900	21,744	0	23,644
Homestead*	76,334	15,825	60,509	17	76,317
Indian Creek	87	1	86	0	87
Islandia*****	0	-18	18	0	0
Key Biscayne	12,925	581	12,344	0	12,925
Medley	995	157	838	0	995
Miami*	497,924	98,416	399,508	2,945	494,979
Miami Beach*	94,161	6,383	87,778	0	94,161
Miami Gardens*	114,363	7,197	107,166	0	114,363
Miami Lakes	32,299	2,938	29,361	11	32,288
Miami Shores	10,817	324	10,493	0	10,817
Miami Springs	14,255	446	13,809	0	14,255
North Bay Village	9,064	1,927	7,137	0	9,064
North Miami*	65,089	6,177	58,912	0	65,089
North Miami Beach	47,722	6,199	41,523	0	47,722
Opa-locka	18,090	2,871	15,219	0	18,090
Palmetto Bay*	24,870	1,462	23,408	0	24,870
Pinecrest	18,619	396	18,223	0	18,619

Table 1. Estimates of Population by County and City in Florida, 2020

(Continued)

County, City, and State	April 1 2020 Estimate	Total Change 2010–2020	April 1 2010 Census	Revenue Sharing Use Only ‡	
				Inmates	Estimates less Inmates April 1, 2020
Miami-Dade County* (Continued)					
South Miami	12,900	1,243	11,657	0	12,900
Sunny Isles Beach	23,869	3,037	20,832	0	23,869
Surfside	5,997	253	5,744	0	5,997
Sweetwater	22,348	8,849	13,499	0	22,348
Virginia Gardens	2,439	64	2,375	0	2,439
West Miami	8,915	2,950	5,965	0	8,915
UNINCORPORATED*	1,220,446	111,022	1,109,424	6,518	1,213,928
Monroe County					
Islamorada, Village of Islands	6,400	281	6,119	0	6,400
Key Colony Beach	795	-2	797	0	795
Key West	24,868	219	24,649	0	24,868
Layton	186	2	184	0	186
Marathon	9,097	800	8,297	0	9,097
UNINCORPORATED	36,477	3,433	33,044	0	36,477
Nassau County					
Callahan	1,347	224	1,123	0	1,347
Fernandina Beach	13,534	2,047	11,487	24	13,510
Hilliard	3,076	-10	3,086	0	3,076
UNINCORPORATED	71,301	13,683	57,618	46	71,255
Okaloosa County					
Cinco Bayou	419	36	383	0	419
Crestview	26,178	5,200	20,978	0	26,178
Destin	13,480	1,175	12,305	0	13,480
Fort Walton Beach	21,064	1,557	19,507	0	21,064
Laurel Hill	590	53	537	0	590
Mary Esther	4,038	187	3,851	0	4,038
Niceville	14,976	2,227	12,749	0	14,976
Shalimar	844	127	717	0	844
Valparaiso	5,408	372	5,036	0	5,408
UNINCORPORATED	116,954	12,195	104,759	1,295	115,659
Okeechobee County					
Okeechobee	42,112	2,116	39,996	2,417	39,695
UNINCORPORATED	5,688	67	5,621	0	5,688
UNINCORPORATED	36,424	2,049	34,375	2,417	34,007
Orange County					
Apopka	1,415,260	269,304	1,145,956	3,265	1,411,995
Apopka	53,632	12,090	41,542	0	53,632
Bay Lake	15	-32	47	0	15
Belle Isle	7,378	1,390	5,988	0	7,378
Eatonville	2,351	192	2,159	63	2,288
Edgewood	2,791	288	2,503	0	2,791
Lake Buena Vista	24	14	10	0	24

Table 1. Estimates of Population by County and City in Florida, 2020

(Continued)

County, City, and State	April 1 2020 Estimate	Total Change 2010–2020	April 1 2010 Census	Revenue Sharing Use Only ‡	
				Inmates	Estimates less Inmates April 1, 2020
Orange County (Continued)					
Maitland	21,113	5,362	15,751	0	21,113
Oakland	3,809	1,271	2,538	0	3,809
Ocoee	49,781	14,202	35,579	0	49,781
Orlando	298,943	60,643	238,300	581	298,362
Windermere	3,024	562	2,462	0	3,024
Winter Garden	48,469	13,901	34,568	0	48,469
Winter Park	30,630	2,778	27,852	0	30,630
UNINCORPORATED	893,300	156,643	736,657	2,621	890,679
Osceola County					
Kissimmee	387,055	118,370	268,685	313	386,742
St. Cloud	75,644	15,962	59,682	171	75,473
UNINCORPORATED	50,897	15,714	35,183	0	50,897
	260,514	86,694	173,820	142	260,372
Palm Beach County					
	1,466,494	146,360	1,320,134	2,772	1,463,722
Atlantis	2,055	50	2,005	0	2,055
Belle Glade	17,979	512	17,467	0	17,979
Boca Raton	95,139	10,747	84,392	0	95,139
Boynton Beach	78,495	10,278	68,217	0	78,495
Briny Breezes	600	-1	601	0	600
Cloud Lake	138	3	135	0	138
Delray Beach	67,168	6,646	60,522	0	67,168
Glen Ridge	235	16	219	0	235
Golf	275	23	252	0	275
Greenacres	39,945	2,372	37,573	0	39,945
Gulf Stream	1,032	246	786	0	1,032
Haverhill	2,090	217	1,873	0	2,090
Highland Beach	3,657	118	3,539	0	3,657
Hypoluxo	2,828	240	2,588	0	2,828
Juno Beach	3,463	287	3,176	0	3,463
Jupiter	63,188	8,032	55,156	0	63,188
Jupiter Inlet Colony	414	14	400	0	414
Lake Clarke Shores	3,426	50	3,376	0	3,426
Lake Park	8,912	757	8,155	0	8,912
Lake Worth	38,875	3,965	34,910	0	38,875
Lantana	12,081	1,658	10,423	19	12,062
Loxahatchee Groves	3,426	246	3,180	0	3,426
Manalapan	428	22	406	0	428
Mangonia Park	2,050	162	1,888	0	2,050
North Palm Beach	12,813	798	12,015	0	12,813
Ocean Ridge	1,854	68	1,786	0	1,854
Pahokee	5,847	198	5,649	338	5,509
Palm Beach*	8,409	248	8,161	0	8,409
Palm Beach Gardens*	56,709	8,269	48,440	0	56,709
Palm Beach Shores	1,251	109	1,142	0	1,251

Table 1. Estimates of Population by County and City in Florida, 2020

(Continued)

County, City, and State	April 1 2020 Estimate	Total Change 2010–2020	April 1 2010 Census	Revenue Sharing Use Only ‡	
				Inmates	Estimates less Inmates April 1, 2020
Palm Beach County (Continued)					
Palm Springs	23,867	4,939	18,928	0	23,867
Riviera Beach	36,057	3,569	32,488	0	36,057
Royal Palm Beach	39,801	5,661	34,140	0	39,801
South Bay	5,271	395	4,876	1,909	3,362
South Palm Beach*	1,460	102	1,358	0	1,460
Tequesta	5,874	245	5,629	0	5,874
Wellington	62,650	6,142	56,508	0	62,650
Westlake*****	951	951	0	0	951
West Palm Beach*	116,781	16,438	100,343	165	116,616
UNINCORPORATED*	639,000	51,568	587,432	341	638,659
Pasco County	542,638	77,941	464,697	680	541,958
Dade City	7,402	965	6,437	0	7,402
New Port Richey	16,935	2,024	14,911	0	16,935
Port Richey	3,047	376	2,671	0	3,047
St. Leo	1,380	40	1,340	0	1,380
San Antonio	1,343	205	1,138	0	1,343
Zephyrhills	17,092	3,804	13,288	0	17,092
UNINCORPORATED	495,439	70,527	424,912	680	494,759
Pinellas County	984,054	67,512	916,542	868	983,186
Belleair	4,095	226	3,869	0	4,095
Belleair Beach	1,625	65	1,560	0	1,625
Belleair Bluffs	2,104	73	2,031	0	2,104
Belleair Shore	108	-1	109	0	108
Clearwater	118,017	10,332	107,685	0	118,017
Dunedin	37,869	2,548	35,321	6	37,863
Gulfport	12,598	569	12,029	0	12,598
Indian Rocks Beach	4,158	45	4,113	0	4,158
Indian Shores	1,479	59	1,420	0	1,479
Kenneth City	5,145	165	4,980	0	5,145
Largo	84,574	6,926	77,648	0	84,574
Madeira Beach	4,447	184	4,263	0	4,447
North Redington Beach	1,531	114	1,417	0	1,531
Oldsmar	14,998	1,407	13,591	0	14,998
Pinellas Park	54,202	5,123	49,079	0	54,202
Redington Beach	1,507	80	1,427	0	1,507
Redington Shores	2,182	61	2,121	0	2,182
Safety Harbor	17,696	812	16,884	6	17,690
St. Pete Beach	9,531	185	9,346	0	9,531
St. Petersburg	271,044	26,275	244,769	421	270,623
Seminole	19,705	2,472	17,233	0	19,705
South Pasadena	5,078	114	4,964	0	5,078
Tarpon Springs	25,937	2,453	23,484	0	25,937
Treasure Island	6,930	225	6,705	0	6,930
UNINCORPORATED	277,494	7,000	270,494	435	277,059

Table 1. Estimates of Population by County and City in Florida, 2020

(Continued)

County, City, and State	April 1 2020 Estimate	Total Change 2010–2020	April 1 2010 Census	Revenue Sharing Use Only ‡	
				Inmates	Estimates less Inmates April 1, 2020
Polk County	715,090	112,995	602,095	3,159	711,931
Auburndale	17,120	3,613	13,507	0	17,120
Bartow	20,757	3,459	17,298	156	20,601
Davenport	7,323	4,435	2,888	0	7,323
Dundee	5,159	1,442	3,717	0	5,159
Eagle Lake	2,785	530	2,255	0	2,785
Fort Meade	5,833	207	5,626	0	5,833
Frostproof	3,454	462	2,992	0	3,454
Haines City*	27,268	6,708	20,560	0	27,268
Highland Park	266	36	230	0	266
Hillcrest Heights	243	-11	254	0	243
Lake Alfred	6,351	1,336	5,015	0	6,351
Lake Hamilton	1,556	325	1,231	0	1,556
Lakeland	109,238	11,816	97,422	0	109,238
Lake Wales	16,386	2,161	14,225	0	16,386
Mulberry	4,100	283	3,817	0	4,100
Polk City	2,490	928	1,562	0	2,490
Winter Haven	47,044	13,170	33,874	0	47,044
UNINCORPORATED*	437,717	62,095	375,622	3,003	434,714
Putnam County	73,723	-641	74,364	464	73,259
Crescent City	1,589	12	1,577	0	1,589
Interlachen	1,372	-31	1,403	0	1,372
Palatka	10,770	212	10,558	0	10,770
Pomona Park	883	-29	912	0	883
Welaka	723	22	701	0	723
UNINCORPORATED	58,386	-827	59,213	464	57,922
St. Johns County	261,900	71,861	190,039	138	261,762
Hastings*****	0	-580	580	0	0
Marineland (part)	2	2	0	0	2
St. Augustine	15,306	2,331	12,975	0	15,306
St. Augustine Beach	6,852	676	6,176	0	6,852
UNINCORPORATED	239,740	69,432	170,308	138	239,602
St. Lucie County	322,265	44,476	277,789	108	322,157
Fort Pierce	44,476	2,886	41,590	31	44,445
Port St. Lucie	202,914	38,311	164,603	6	202,908
St. Lucie Village	661	71	590	0	661
UNINCORPORATED	74,214	3,208	71,006	71	74,143
Santa Rosa County	184,653	33,281	151,372	4,968	179,685
Gulf Breeze	5,910	147	5,763	0	5,910
Jay	527	-6	533	0	527
Milton	10,767	1,941	8,826	77	10,690
UNINCORPORATED	167,449	31,199	136,250	4,891	162,558

Table 1. Estimates of Population by County and City in Florida, 2020

(Continued)

County, City, and State	April 1 2020 Estimate	Total Change 2010–2020	April 1 2010 Census	Revenue Sharing Use Only ‡	
				Inmates	Estimates less Inmates April 1, 2020
Sarasota County	438,816	59,368	379,448	6	438,810
Longboat Key (part)	4,617	127	4,490	0	4,617
North Port	77,561	20,204	57,357	0	77,561
Sarasota	57,683	5,766	51,917	6	57,677
Venice	24,016	3,268	20,748	0	24,016
UNINCORPORATED	274,939	30,003	244,936	0	274,939
Seminole County	476,727	54,009	422,718	131	476,596
Altamonte Springs	45,304	3,808	41,496	0	45,304
Casselberry	30,341	4,100	26,241	5	30,336
Lake Mary	17,633	3,811	13,822	0	17,633
Longwood	16,036	2,379	13,657	0	16,036
Oviedo	40,145	6,803	33,342	0	40,145
Sanford	61,791	8,221	53,570	1	61,790
Winter Springs	38,760	5,478	33,282	0	38,760
UNINCORPORATED	226,717	19,409	207,308	125	226,592
Sumter County	141,422	48,002	93,420	7,650	133,772
Bushnell	2,566	148	2,418	0	2,566
Center Hill	1,164	176	988	0	1,164
Coleman	734	31	703	0	734
Webster	790	5	785	0	790
Wildwood	17,354	10,645	6,709	0	17,354
UNINCORPORATED	118,814	36,997	81,817	7,650	111,164
Suwannee County	45,463	3,912	41,551	1,986	43,477
Branford	743	31	712	0	743
Live Oak	6,893	43	6,850	0	6,893
UNINCORPORATED	37,827	3,838	33,989	1,986	35,841
Taylor County	22,436	-134	22,570	2,283	20,153
Perry	6,937	-80	7,017	0	6,937
UNINCORPORATED	15,499	-54	15,553	2,283	13,216
Union County	15,410	-125	15,535	4,792	10,618
Lake Butler	1,758	-139	1,897	0	1,758
Raiford	242	-13	255	0	242
Worthington Springs*	377	-30	407	0	377
UNINCORPORATED*	13,033	57	12,976	4,792	8,241
Volusia County	551,588	56,995	494,593	1,802	549,786
Daytona Beach	70,235	9,230	61,005	29	70,206
Daytona Beach Shores	4,489	242	4,247	0	4,489
DeBary	21,973	2,653	19,320	0	21,973
DeLand	37,043	10,012	27,031	0	37,043
Deltona	93,677	8,495	85,182	0	93,677

Table 1. Estimates of Population by County and City in Florida, 2020

(Continued)

County, City, and State	April 1 2020 Estimate	Total Change 2010–2020	April 1 2010 Census	Revenue Sharing Use Only ‡	
				Inmates	Estimates less Inmates April 1, 2020
Volusia County (Continued)					
Edgewater	23,818	3,068	20,750	0	23,818
Flagler Beach (part)	60	0	60	0	60
Holly Hill	12,398	739	11,659	0	12,398
Lake Helen	2,849	225	2,624	0	2,849
New Smyrna Beach	28,594	6,130	22,464	0	28,594
Oak Hill	2,110	318	1,792	0	2,110
Orange City	12,436	1,837	10,599	0	12,436
Ormond Beach	41,782	3,645	38,137	5	41,777
Pierson	1,869	133	1,736	0	1,869
Ponce Inlet	3,205	173	3,032	0	3,205
Port Orange	62,832	6,784	56,048	0	62,832
South Daytona	13,007	755	12,252	0	13,007
UNINCORPORATED	119,211	2,556	116,655	1,768	117,443
Wakulla County					
St. Marks	33,981	3,205	30,776	2,971	31,010
Sopchoppy	345	52	293	0	345
UNINCORPORATED	515	58	457	0	515
Walton County					
DeFuniak Springs	74,724	19,681	55,043	1,478	73,246
Freeport	5,653	476	5,177	25	5,628
Paxton	5,765	3,978	1,787	0	5,765
UNINCORPORATED	608	-36	644	0	608
Washington County					
Caryville	25,334	438	24,896	1,969	23,365
Chipley	293	-118	411	0	293
Ebro	3,601	-4	3,605	0	3,601
Vernon	240	-30	270	0	240
Wausau	733	46	687	0	733
UNINCORPORATED	310	-73	383	0	310
Florida*					
Incorporated*	21,596,068	2,794,736	18,801,332	112,659	21,483,409
Unincorporated*	10,907,959	1,454,778	9,453,181	16,696	10,891,263
	10,688,109	1,339,958	9,348,151	95,963	10,592,146

‡ Because 2020 is a decennial census year, the 2020 Census counts will be used as they are available.

Otherwise, these estimates will be used for the revenue-sharing calculations.

* Includes US Census Bureau corrections as of February 11, 2014.

** The City of Weeki Wachee was disincorporated on June 9, 2020.

*** The Village of Estero was incorporated on December 31, 2014.

**** The Village of Indiantown was incorporated on December 31, 2017.

***** The City of Islandia was disincorporated on March 6, 2012.

***** The City of Westlake was incorporated on June 20, 2016.

***** The City of Hastings was disincorporated on February 28, 2018.

Table 2. Components of Population Change for Counties in Florida, 2010 to 2020

State and County	Total Change 2010–2020	Components of Change				Percent of Change Due to	
		Births	Deaths	Natural Increase	Net Migration	Natural Increase	Net Migration
FLORIDA*	2,794,736	2,190,197	1,890,779	299,418	2,495,318	10.7	89.3
Alachua	24,252	28,450	18,593	9,857	14,395	40.6	59.4
Baker	1,417	3,438	2,429	1,009	408	71.2	28.8
Bay	5,558	22,458	18,266	4,192	1,366	75.4	24.6
Bradford	205	3,033	2,999	34	171	16.6	83.4
Brevard	63,295	51,674	68,718	-17,044	80,339	0.0	100.0
Broward	184,146	218,189	147,356	70,833	113,313	38.5	61.5
Calhoun	-136	1,397	1,671	-274	138	100.0	0.0
Charlotte	27,926	10,182	24,877	-14,695	42,621	0.0	100.0
Citrus	8,147	10,449	24,876	-14,427	22,574	0.0	100.0
Clay	28,710	21,523	16,594	4,929	23,781	17.2	82.8
Collier	65,930	32,203	31,706	497	65,433	0.8	99.2
Columbia	3,086	8,036	7,797	239	2,847	7.7	92.3
DeSoto	2,220	3,860	3,258	602	1,618	27.1	72.9
Dixie	241	1,552	2,160	-608	849	0.0	100.0
Duval	117,817	128,067	78,564	49,503	68,314	42.0	58.0
Escambia	26,095	38,798	32,624	6,174	19,921	23.7	76.3
Flagler	18,477	8,137	12,419	-4,282	22,759	0.0	100.0
Franklin	315	1,024	1,308	-284	599	0.0	100.0
Gadsden	-163	5,570	4,667	903	-1,066	0.0	100.0
Gilchrist	1,330	1,909	1,908	1	1,329	0.1	99.9
Glades	725	667	1,146	-479	1,204	0.0	100.0
Gulf	-1,139	1,218	1,788	-570	-569	50.0	50.0
Hamilton	-229	1,596	1,443	153	-382	0.0	100.0
Hardee	-288	3,823	2,121	1,702	-1,990	0.0	100.0
Hendry	1,813	5,928	2,910	3,018	-1,205	100.0	0.0
Hernando	19,408	15,293	26,149	-10,856	30,264	0.0	100.0
Highlands	6,048	8,969	15,122	-6,153	12,201	0.0	100.0
Hillsborough	249,533	169,355	100,835	68,520	181,013	27.5	72.5
Holmes	74	1,980	2,623	-643	717	0.0	100.0
Indian River	20,806	12,650	19,397	-6,747	27,553	0.0	100.0
Jackson	-3,159	4,982	5,958	-976	-2,183	30.9	69.1
Jefferson	-367	1,269	1,621	-352	-15	95.9	4.1
Lafayette	-180	721	757	-36	-144	20.0	80.0

Table 2. Components of Population Change for Counties in Florida, 2010 to 2020

(Continued)

State and County	Total Change 2010–2020	Births	Deaths	Components of Change		Percent of Change Due to	
				Natural Increase	Net Migration	Natural Increase	Net Migration
Lake*	69,695	31,877	38,816	-6,939	76,634	0.0	100.0
Lee	131,739	65,670	66,849	-1,179	132,918	0.0	100.0
Leon	23,997	30,294	18,166	12,128	11,869	50.5	49.5
Levy	898	4,049	5,343	-1,294	2,192	0.0	100.0
Liberty	210	786	685	101	109	48.1	51.9
Madison	-270	2,034	2,261	-227	-43	84.1	15.9
Manatee	75,670	34,387	37,852	-3,465	79,135	0.0	100.0
Marion*	36,832	34,355	48,174	-13,819	50,651	0.0	100.0
Martin	14,983	12,233	18,547	-6,314	21,297	0.0	100.0
Miami-Dade*	336,337	314,502	192,059	122,443	213,894	36.4	63.6
Monroe	4,733	7,201	6,931	270	4,463	5.7	94.3
Nassau	15,944	7,923	7,951	-28	15,972	0.0	100.0
Okaloosa	23,129	27,081	17,070	10,011	13,118	43.3	56.7
Okeechobee	2,116	5,281	4,387	894	1,222	42.2	57.8
Orange	269,304	162,155	75,774	86,381	182,923	32.1	67.9
Osceola	118,370	41,188	20,703	20,485	97,885	17.3	82.7
Palm Beach	146,360	144,874	140,307	4,567	141,793	3.1	96.9
Pasco	77,941	49,377	58,797	-9,420	87,361	0.0	100.0
Pinellas	67,512	83,771	116,358	-32,587	100,099	0.0	100.0
Polk	112,995	75,912	64,947	10,965	102,030	9.7	90.3
Putnam	-641	8,371	9,782	-1,411	770	100.0	0.0
St. Johns	71,861	20,524	17,997	2,527	69,334	3.5	96.5
St. Lucie	44,476	30,326	30,515	-189	44,665	0.0	100.0
Santa Rosa	33,281	18,725	13,901	4,824	28,457	14.5	85.5
Sarasota	59,368	28,846	53,938	-25,092	84,460	0.0	100.0
Seminole	54,009	45,549	32,351	13,198	40,811	24.4	75.6
Sumter	48,002	4,654	16,186	-11,532	59,534	0.0	100.0
Suwannee	3,912	4,630	5,511	-881	4,793	0.0	100.0
Taylor	-134	2,379	2,479	-100	-34	74.6	25.4
Union	-125	1,625	2,231	-606	481	100.0	0.0
Volusia	56,995	48,117	67,592	-19,475	76,470	0.0	100.0
Wakulla	3,205	3,256	2,630	626	2,579	19.5	80.5
Walton	19,681	7,381	6,009	1,372	18,309	7.0	93.0
Washington	438	2,464	3,020	-556	994	0.0	100.0

* Includes US Census Bureau corrections as of February 11, 2014.

Table 3. Population and Population Change for Counties in Florida, 1990 to 2020

State and County	Population				Percent Change		
	2020	2010	2000	1990	2010 to 2020	2000 to 2010	1990 to 2000
FLORIDA*	21,596,068	18,801,332	15,982,824	12,938,071	14.9	17.6	23.5
Alachua	271,588	247,336	217,955	181,596	9.8	13.5	20.0
Baker	28,532	27,115	22,259	18,486	5.2	21.8	20.4
Bay	174,410	168,852	148,217	126,994	3.3	13.9	16.7
Bradford	28,725	28,520	26,088	22,515	0.7	9.3	15.9
Brevard	606,671	543,376	476,230	398,978	11.6	14.1	19.4
Broward	1,932,212	1,748,066	1,623,018	1,255,531	10.5	7.7	29.3
Calhoun	14,489	14,625	13,017	11,011	-0.9	12.4	18.2
Charlotte	187,904	159,978	141,627	110,975	17.5	13.0	27.6
Citrus	149,383	141,236	118,085	93,513	5.8	19.6	26.3
Clay	219,575	190,865	140,814	105,986	15.0	35.5	32.9
Collier	387,450	321,520	251,377	152,099	20.5	27.9	65.3
Columbia	70,617	67,531	56,513	42,613	4.6	19.5	32.6
DeSoto	37,082	34,862	32,209	23,865	6.4	8.2	35.0
Dixie	16,663	16,422	13,827	10,585	1.5	18.8	30.6
Duval	982,080	864,263	778,879	672,971	13.6	11.0	15.7
Escambia	323,714	297,619	294,410	262,798	8.8	1.1	12.0
Flagler	114,173	95,696	49,832	28,701	19.3	92.0	73.6
Franklin	11,864	11,549	9,829	8,967	2.7	17.5	9.6
Gadsden	46,226	46,389	45,087	41,116	-0.4	2.9	9.7
Gilchrist	18,269	16,939	14,437	9,667	7.9	17.3	49.3
Glades	13,609	12,884	10,576	7,591	5.6	21.8	39.3
Gulf	14,724	15,863	14,560	11,504	-7.2	8.9	26.6
Hamilton	14,570	14,799	13,327	10,930	-1.5	11.0	21.9
Hardee	27,443	27,731	26,938	19,499	-1.0	2.9	38.2
Hendry	40,953	39,140	36,210	25,773	4.6	8.1	40.5
Hernando	192,186	172,778	130,802	101,115	11.2	32.1	29.4
Highlands	104,834	98,786	87,366	68,432	6.1	13.1	27.7
Hillsborough	1,478,759	1,229,226	998,948	834,054	20.3	23.1	19.8
Holmes	20,001	19,927	18,564	15,778	0.4	7.3	17.7
Indian River	158,834	138,028	112,947	90,208	15.1	22.2	25.2
Jackson	46,587	49,746	46,755	41,375	-6.4	6.4	13.0
Jefferson	14,394	14,761	12,902	11,296	-2.5	14.4	14.2
Lafayette	8,690	8,870	7,022	5,578	-2.0	26.3	25.9

Table 3. Population and Population Change for Counties in Florida, 1990 to 2020
(Continued)

State and County	Population				Percent Change		
	2020	2010	2000	1990	2010 to 2020	2000 to 2010	1990 to 2000
Lake*	366,742	297,047	210,527	152,104	23.5	41.1	38.4
Lee	750,493	618,754	440,888	335,113	21.3	40.3	31.6
Leon	299,484	275,487	239,452	192,493	8.7	15.0	24.4
Levy	41,699	40,801	34,450	25,912	2.2	18.4	32.9
Liberty	8,575	8,365	7,021	5,569	2.5	19.1	26.1
Madison	18,954	19,224	18,733	16,569	-1.4	2.6	13.1
Manatee	398,503	322,833	264,002	211,707	23.4	22.3	24.7
Marion*	368,135	331,303	258,916	194,835	11.1	28.0	32.9
Martin	161,301	146,318	126,731	100,900	10.2	15.5	25.6
Miami-Dade*	2,832,794	2,496,457	2,253,779	1,937,194	13.5	10.8	16.3
Monroe	77,823	73,090	79,589	78,024	6.5	-8.2	2.0
Nassau	89,258	73,314	57,663	43,941	21.7	27.1	31.2
Okaloosa	203,951	180,822	170,498	143,777	12.8	6.1	18.6
Okeechobee	42,112	39,996	35,910	29,627	5.3	11.4	21.2
Orange	1,415,260	1,145,956	896,344	677,491	23.5	27.8	32.3
Osceola	387,055	268,685	172,493	107,728	44.1	55.8	60.1
Palm Beach	1,466,494	1,320,134	1,131,191	863,503	11.1	16.7	31.0
Pasco	542,638	464,697	344,768	281,131	16.8	34.8	22.6
Pinellas	984,054	916,542	921,495	851,659	7.4	-0.5	8.2
Polk	715,090	602,095	483,924	405,382	18.8	24.4	19.4
Putnam	73,723	74,364	70,423	65,070	-0.9	5.6	8.2
St. Johns	261,900	190,039	123,135	83,829	37.8	54.3	46.9
St. Lucie	322,265	277,789	192,695	150,171	16.0	44.2	28.3
Santa Rosa	184,653	151,372	117,743	81,608	22.0	28.6	44.3
Sarasota	438,816	379,448	325,961	277,776	15.6	16.4	17.3
Seminole	476,727	422,718	365,199	287,521	12.8	15.8	27.0
Sumter	141,422	93,420	53,345	31,577	51.4	75.1	68.9
Suwannee	45,463	41,551	34,844	26,780	9.4	19.2	30.1
Taylor	22,436	22,570	19,256	17,111	-0.6	17.2	12.5
Union	15,410	15,535	13,442	10,252	-0.8	15.6	31.1
Volusia	551,588	494,593	443,343	370,737	11.5	11.6	19.6
Wakulla	33,981	30,776	22,863	14,202	10.4	34.6	61.0
Walton	74,724	55,043	40,601	27,759	35.8	35.6	46.3
Washington	25,334	24,896	20,973	16,919	1.8	18.7	24.0

* Includes US Census Bureau corrections as of February 11, 2014.

Table 4. Population and Population Change for Metropolitan Statistical Areas in Florida, 1990 to 2020

Metropolitan Statistical Area* and County	Population				Percent Change		
	2020	2010	2000	1990	2010 to 2020	2000 to 2010	1990 to 2000
All MSAs	20,900,221	18,119,272	15,357,198	12,414,566	15.3	18.0	23.7
Cape Coral-Fort Myers	750,493	618,754	440,888	335,113	21.3	40.3	31.6
Lee	750,493	618,754	440,888	335,113	21.3	40.3	31.6
Crestview-Fort Walton							
Beach-Destin	278,675	235,865	211,099	171,536	18.2	11.7	23.1
Okaloosa	203,951	180,822	170,498	143,777	12.8	6.1	18.6
Walton	74,724	55,043	40,601	27,759	35.8	35.6	46.3
Deltona-Daytona Beach-							
Ormond Beach	665,761	590,289	493,175	399,438	12.8	19.7	23.5
Flagler	114,173	95,696	49,832	28,701	19.3	92.0	73.6
Volusia	551,588	494,593	443,343	370,737	11.5	11.6	19.6
Gainesville	331,556	305,076	266,842	217,175	8.7	14.3	22.9
Alachua	271,588	247,336	217,955	181,596	9.8	13.5	20.0
Gilchrist	18,269	16,939	14,437	9,667	7.9	17.3	49.3
Levy	41,699	40,801	34,450	25,912	2.2	18.4	32.9
Homosassa Springs	149,383	141,236	118,085	93,513	5.8	19.6	26.3
Citrus	149,383	141,236	118,085	93,513	5.8	19.6	26.3
Jacksonville	1,581,345	1,345,596	1,122,750	925,213	17.5	19.8	21.4
Baker	28,532	27,115	22,259	18,486	5.2	21.8	20.4
Clay	219,575	190,865	140,814	105,986	15.0	35.5	32.9
Duval	982,080	864,263	778,879	672,971	13.6	11.0	15.7
Nassau	89,258	73,314	57,663	43,941	21.7	27.1	31.2
St. Johns	261,900	190,039	123,135	83,829	37.8	54.3	46.9
Lakeland-Winter Haven	715,090	602,095	483,924	405,382	18.8	24.4	19.4
Polk	715,090	602,095	483,924	405,382	18.8	24.4	19.4
Miami-Fort Lauderdale-							
Pompano Beach	6,231,500	5,564,657	5,007,988	4,056,228	12.0	11.1	23.5
Broward	1,932,212	1,748,066	1,623,018	1,255,531	10.5	7.7	29.3
Miami-Dade**	2,832,794	2,496,457	2,253,779	1,937,194	13.5	10.8	16.3
Palm Beach	1,466,494	1,320,134	1,131,191	863,503	11.1	16.7	31.0
Naples-Marco Island	387,450	321,520	251,377	152,099	20.5	27.9	65.3
Collier	387,450	321,520	251,377	152,099	20.5	27.9	65.3
North Port-Sarasota-							
Bradenton	837,319	702,281	589,963	489,483	19.2	19.0	20.5
Manatee	398,503	322,833	264,002	211,707	23.4	22.3	24.7
Sarasota	438,816	379,448	325,961	277,776	15.6	16.4	17.3
Ocala	368,135	331,303	258,916	194,835	11.1	28.0	32.9
Marion**	368,135	331,303	258,916	194,835	11.1	28.0	32.9

Table 4. Population and Population Change for Metropolitan Statistical Areas in Florida, 1990 to 2020 (Continued)

Metropolitan Statistical Area* and County	Population				Percent Change		
	2020	2010	2000	1990	2010 to 2020	2000 to 2010	1990 to 2000
Orlando-Kissimmee-Sanford	2,645,784	2,134,406	1,644,563	1,224,844	24.0	29.8	34.3
Lake**	366,742	297,047	210,527	152,104	23.5	41.1	38.4
Orange	1,415,260	1,145,956	896,344	677,491	23.5	27.8	32.3
Osceola	387,055	268,685	172,493	107,728	44.1	55.8	60.1
Seminole	476,727	422,718	365,199	287,521	12.8	15.8	27.0
Palm Bay-Melbourne-Titusville	606,671	543,376	476,230	398,978	11.6	14.1	19.4
Brevard	606,671	543,376	476,230	398,978	11.6	14.1	19.4
Panama City Bay	174,410	168,852	148,217	126,994	3.3	13.9	16.7
Bay	174,410	168,852	148,217	126,994	3.3	13.9	16.7
Pensacola-Ferry Pass-Brent Escambia	508,367	448,991	412,153	344,406	13.2	8.9	19.7
Escambia	323,714	297,619	294,410	262,798	8.8	1.1	12.0
Santa Rosa	184,653	151,372	117,743	81,608	22.0	28.6	44.3
Port St. Lucie	483,566	424,107	319,426	251,071	14.0	32.8	27.2
Martin	161,301	146,318	126,731	100,900	10.2	15.5	25.6
St. Lucie	322,265	277,789	192,695	150,171	16.0	44.2	28.3
Punta Gorda	187,904	159,978	141,627	110,975	17.5	13.0	27.6
Charlotte	187,904	159,978	141,627	110,975	17.5	13.0	27.6
Sebastian-Vero Beach	158,834	138,028	112,947	90,208	15.1	22.2	25.2
Indian River	158,834	138,028	112,947	90,208	15.1	22.2	25.2
Sebring-Avon Park	104,834	98,786	87,366	68,432	6.1	13.1	27.7
Highlands	104,834	98,786	87,366	68,432	6.1	13.1	27.7
Tallahassee	394,085	367,413	320,304	259,107	7.3	14.7	23.6
Gadsden	46,226	46,389	45,087	41,116	-0.4	2.9	9.7
Jefferson	14,394	14,761	12,902	11,296	-2.5	14.4	14.2
Leon	299,484	275,487	239,452	192,493	8.7	15.0	24.4
Wakulla	33,981	30,776	22,863	14,202	10.4	34.6	61.0
Tampa-St. Petersburg-Clearwater	3,197,637	2,783,243	2,396,013	2,067,959	14.9	16.2	15.9
Hernando	192,186	172,778	130,802	101,115	11.2	32.1	29.4
Hillsborough	1,478,759	1,229,226	998,948	834,054	20.3	23.1	19.8
Pasco	542,638	464,697	344,768	281,131	16.8	34.8	22.6
Pinellas	984,054	916,542	921,495	851,659	7.4	-0.5	8.2
The Villages	141,422	93,420	53,345	31,577	51.4	75.1	68.9
Sumter	141,422	93,420	53,345	31,577	51.4	75.1	68.9

* Based on the March 6, 2020 US Office of Management and Budget MSA definitions, (OMB Bulletin No. 20-01).

** Includes US Census Bureau corrections as of February 11, 2014.

**Table 5. Population and Population Change for Regional Planning Councils In Florida,
1990 to 2020**

State, Regional Planning Council* and County	Population				Percent Change		
	2020	2010	2000	1990	2010 to 2020	2000 to 2010	1990 to 2000
FLORIDA**	21,596,068	18,801,332	15,982,824	12,938,071	14.9	17.6	23.5
Apalachee	490,324	467,561	411,486	337,533	4.9	13.6	21.9
Calhoun	14,489	14,625	13,017	11,011	-0.9	12.4	18.2
Franklin	11,864	11,549	9,829	8,967	2.7	17.5	9.6
Gadsden	46,226	46,389	45,087	41,116	-0.4	2.9	9.7
Gulf	14,724	15,863	14,560	11,504	-7.2	8.9	26.6
Jackson	46,587	49,746	46,755	41,375	-6.4	6.4	13.0
Jefferson	14,394	14,761	12,902	11,296	-2.5	14.4	14.2
Leon	299,484	275,487	239,452	192,493	8.7	15.0	24.4
Liberty	8,575	8,365	7,021	5,569	2.5	19.1	26.1
Wakulla	33,981	30,776	22,863	14,202	10.4	34.6	61.0
Central Florida	926,561	803,470	666,347	546,805	15.3	20.6	21.9
DeSoto	37,082	34,862	32,209	23,865	6.4	8.2	35.0
Hardee	27,443	27,731	26,938	19,499	-1.0	2.9	38.2
Highlands	104,834	98,786	87,366	68,432	6.1	13.1	27.7
Okeechobee	42,112	39,996	35,910	29,627	5.3	11.4	21.2
Polk	715,090	602,095	483,924	405,382	18.8	24.4	19.4
East Central Florida	4,313,600	3,597,098	2,876,397	2,220,971	19.9	25.1	29.5
Brevard	606,671	543,376	476,230	398,978	11.6	14.1	19.4
Lake**	366,742	297,047	210,527	152,104	23.5	41.1	38.4
Marion**	368,135	331,303	258,916	194,835	11.1	28.0	32.9
Orange	1,415,260	1,145,956	896,344	677,491	23.5	27.8	32.3
Osceola	387,055	268,685	172,493	107,728	44.1	55.8	60.1
Seminole	476,727	422,718	365,199	287,521	12.8	15.8	27.0
Sumter	141,422	93,420	53,345	31,577	51.4	75.1	68.9
Volusia	551,588	494,593	443,343	370,737	11.5	11.6	19.6
Emerald Coast***	1,006,787	898,531	811,006	675,633	12.0	10.8	20.0
Bay	174,410	168,852	148,217	126,994	3.3	13.9	16.7
Escambia	323,714	297,619	294,410	262,798	8.8	1.1	12.0
Holmes	20,001	19,927	18,564	15,778	0.4	7.3	17.7
Okaloosa	203,951	180,822	170,498	143,777	12.8	6.1	18.6
Santa Rosa	184,653	151,372	117,743	81,608	22.0	28.6	44.3
Walton	74,724	55,043	40,601	27,759	35.8	35.6	46.3
Washington	25,334	24,896	20,973	16,919	1.8	18.7	24.0
North Central Florida	573,084	540,098	469,894	380,108	6.1	14.9	23.6
Alachua	271,588	247,336	217,955	181,596	9.8	13.5	20.0
Bradford	28,725	28,520	26,088	22,515	0.7	9.3	15.9
Columbia	70,617	67,531	56,513	42,613	4.6	19.5	32.6
Dixie	16,663	16,422	13,827	10,585	1.5	18.8	30.6
Gilchrist	18,269	16,939	14,437	9,667	7.9	17.3	49.3
Hamilton	14,570	14,799	13,327	10,930	-1.5	11.0	21.9
Lafayette	8,690	8,870	7,022	5,578	-2.0	26.3	25.9
Levy	41,699	40,801	34,450	25,912	2.2	18.4	32.9

**Table 5. Population and Population Change for Regional Planning Councils In Florida,
1990 to 2020** (Continued)

State, Regional Planning Council* and County	Population				Percent Change		
	2020	2010	2000	1990	2010 to 2020	2000 to 2010	1990 to 2000
North Central Florida (Continued)							
Madison	18,954	19,224	18,733	16,569	-1.4	2.6	13.1
Suwannee	45,463	41,551	34,844	26,780	9.4	19.2	30.1
Taylor	22,436	22,570	19,256	17,111	-0.6	17.2	12.5
Union	15,410	15,535	13,442	10,252	-0.8	15.6	31.1
Northeast Florida							
Baker	1,769,241	1,515,656	1,243,005	1,018,984	16.7	21.9	22.0
Clay	28,532	27,115	22,259	18,486	5.2	21.8	20.4
Duval	219,575	190,865	140,814	105,986	15.0	35.5	32.9
Flagler	982,080	864,263	778,879	672,971	13.6	11.0	15.7
Nassau	114,173	95,696	49,832	28,701	19.3	92.0	73.6
Putnam	89,258	73,314	57,663	43,941	21.7	27.1	31.2
St. Johns	73,723	74,364	70,423	65,070	-0.9	5.6	8.2
St. Johns	261,900	190,039	123,135	83,829	37.8	54.3	46.9
South Florida							
Broward	4,842,829	4,317,613	3,956,386	3,270,749	12.2	9.1	21.0
Miami-Dade**	1,932,212	1,748,066	1,623,018	1,255,531	10.5	7.7	29.3
Monroe	2,832,794	2,496,457	2,253,779	1,937,194	13.5	10.8	16.3
Monroe	77,823	73,090	79,589	78,024	6.5	-8.2	2.0
Southwest Florida							
Charlotte	1,819,225	1,531,724	1,206,639	909,327	18.8	26.9	32.7
Collier	187,904	159,978	141,627	110,975	17.5	13.0	27.6
Glades	387,450	321,520	251,377	152,099	20.5	27.9	65.3
Hendry	13,609	12,884	10,576	7,591	5.6	21.8	39.3
Lee	40,953	39,140	36,210	25,773	4.6	8.1	40.5
Sarasota	750,493	618,754	440,888	335,113	21.3	40.3	31.6
Sarasota	438,816	379,448	325,961	277,776	15.6	16.4	17.3
Tampa Bay							
Citrus	3,745,523	3,247,312	2,778,100	2,373,179	15.3	16.9	17.1
Hernando	149,383	141,236	118,085	93,513	5.8	19.6	26.3
Hillsborough	192,186	172,778	130,802	101,115	11.2	32.1	29.4
Manatee	1,478,759	1,229,226	998,948	834,054	20.3	23.1	19.8
Pasco	398,503	322,833	264,002	211,707	23.4	22.3	24.7
Pinellas	542,638	464,697	344,768	281,131	16.8	34.8	22.6
Pinellas	984,054	916,542	921,495	851,659	7.4	-0.5	8.2
Treasure Coast							
Indian River	2,108,894	1,882,269	1,563,564	1,204,782	12.0	20.4	29.8
Martin	158,834	138,028	112,947	90,208	15.1	22.2	25.2
Palm Beach	161,301	146,318	126,731	100,900	10.2	15.5	25.6
St. Lucie	1,466,494	1,320,134	1,131,191	863,503	11.1	16.7	31.0
St. Lucie	322,265	277,789	192,695	150,171	16.0	44.2	28.3

* During the 2015 Legislative Session, Chapter 2015-30, L.O.F., (CS/CS/SB 1216) designated 10 Regional Planning Councils (RPCs) and their respective county government memberships. The Withlacoochee RPC was dissolved and the five counties within that council were reassigned into three other councils.

** Includes US Census Bureau corrections as of February 11, 2014.

*** The West Florida Regional Planning Council was renamed the Emerald Coast Regional Council in 2019.

Table 6. Rank of Florida Counties by Population Size in 2020 and Population Distribution, 1990 to 2020

Rank	State and County	Population				Percent of State Population			
		2020	2010	2000	1990	2020	2010	2000	1990
	FLORIDA*	21,596,068	18,801,332	15,982,824	12,938,071	100.00	100.00	100.00	100.00
1	Miami-Dade*	2,832,794	2,496,457	2,253,779	1,937,194	13.12	13.28	14.10	14.97
2	Broward	1,932,212	1,748,066	1,623,018	1,255,531	8.95	9.30	10.15	9.70
3	Hillsborough	1,478,759	1,229,226	998,948	834,054	6.85	6.54	6.25	6.45
4	Palm Beach	1,466,494	1,320,134	1,131,191	863,503	6.79	7.02	7.08	6.67
5	Orange	1,415,260	1,145,956	896,344	677,491	6.55	6.10	5.61	5.24
6	Pinellas	984,054	916,542	921,495	851,659	4.56	4.87	5.77	6.58
7	Duval	982,080	864,263	778,879	672,971	4.55	4.60	4.87	5.20
8	Lee	750,493	618,754	440,888	335,113	3.48	3.29	2.76	2.59
9	Polk	715,090	602,095	483,924	405,382	3.31	3.20	3.03	3.13
10	Brevard	606,671	543,376	476,230	398,978	2.81	2.89	2.98	3.08
11	Volusia	551,588	494,593	443,343	370,737	2.55	2.63	2.77	2.87
12	Pasco	542,638	464,697	344,768	281,131	2.51	2.47	2.16	2.17
13	Seminole	476,727	422,718	365,199	287,521	2.21	2.25	2.28	2.22
14	Sarasota	438,816	379,448	325,961	277,776	2.03	2.02	2.04	2.15
15	Manatee	398,503	322,833	264,002	211,707	1.85	1.72	1.65	1.64
16	Collier	387,450	321,520	251,377	152,099	1.79	1.71	1.57	1.18
17	Osceola	387,055	268,685	172,493	107,728	1.79	1.43	1.08	0.83
18	Marion*	368,135	331,303	258,916	194,835	1.70	1.76	1.62	1.51
19	Lake*	366,742	297,047	210,527	152,104	1.70	1.58	1.32	1.18
20	Escambia	323,714	297,619	294,410	262,798	1.50	1.58	1.84	2.03
21	St. Lucie	322,265	277,789	192,695	150,171	1.49	1.48	1.21	1.16
22	Leon	299,484	275,487	239,452	192,493	1.39	1.47	1.50	1.49
23	Alachua	271,588	247,336	217,955	181,596	1.26	1.32	1.36	1.40
24	St. Johns	261,900	190,039	123,135	83,829	1.21	1.01	0.77	0.65
25	Clay	219,575	190,865	140,814	105,986	1.02	1.02	0.88	0.82
26	Okaloosa	203,951	180,822	170,498	143,777	0.94	0.96	1.07	1.11
27	Hernando	192,186	172,778	130,802	101,115	0.89	0.92	0.82	0.78
28	Charlotte	187,904	159,978	141,627	110,975	0.87	0.85	0.89	0.86
29	Santa Rosa	184,653	151,372	117,743	81,608	0.86	0.81	0.74	0.63
30	Bay	174,410	168,852	148,217	126,994	0.81	0.90	0.93	0.98
31	Martin	161,301	146,318	126,731	100,900	0.75	0.78	0.79	0.78
32	Indian River	158,834	138,028	112,947	90,208	0.74	0.73	0.71	0.70
33	Citrus	149,383	141,236	118,085	93,513	0.69	0.75	0.74	0.72
34	Sumter	141,422	93,420	53,345	31,577	0.65	0.50	0.33	0.24
35	Flagler	114,173	95,696	49,832	28,701	0.53	0.51	0.31	0.22

Table 6. Rank of Florida Counties by Population Size in 2020 and Population Distribution, 1990 to 2020 (Continued)

Rank	State and County	Population				Percent of State Population			
		2020	2010	2000	1990	2020	2010	2000	1990
36	Highlands	104,834	98,786	87,366	68,432	0.49	0.53	0.55	0.53
37	Nassau	89,258	73,314	57,663	43,941	0.41	0.39	0.36	0.34
38	Monroe	77,823	73,090	79,589	78,024	0.36	0.39	0.50	0.60
39	Walton	74,724	55,043	40,601	27,759	0.35	0.29	0.25	0.21
40	Putnam	73,723	74,364	70,423	65,070	0.34	0.40	0.44	0.50
41	Columbia	70,617	67,531	56,513	42,613	0.33	0.36	0.35	0.33
42	Jackson	46,587	49,746	46,755	41,375	0.22	0.26	0.29	0.32
43	Gadsden	46,226	46,389	45,087	41,116	0.21	0.25	0.28	0.32
44	Suwannee	45,463	41,551	34,844	26,780	0.21	0.22	0.22	0.21
45	Okeechobee	42,112	39,996	35,910	29,627	0.19	0.21	0.22	0.23
46	Levy	41,699	40,801	34,450	25,912	0.19	0.22	0.22	0.20
47	Hendry	40,953	39,140	36,210	25,773	0.19	0.21	0.23	0.20
48	DeSoto	37,082	34,862	32,209	23,865	0.17	0.19	0.20	0.18
49	Wakulla	33,981	30,776	22,863	14,202	0.16	0.16	0.14	0.11
50	Bradford	28,725	28,520	26,088	22,515	0.13	0.15	0.16	0.17
51	Baker	28,532	27,115	22,259	18,486	0.13	0.14	0.14	0.14
52	Hardee	27,443	27,731	26,938	19,499	0.13	0.15	0.17	0.15
53	Washington	25,334	24,896	20,973	16,919	0.12	0.13	0.13	0.13
54	Taylor	22,436	22,570	19,256	17,111	0.10	0.12	0.12	0.13
55	Holmes	20,001	19,927	18,564	15,778	0.09	0.11	0.12	0.12
56	Madison	18,954	19,224	18,733	16,569	0.09	0.10	0.12	0.13
57	Gilchrist	18,269	16,939	14,437	9,667	0.08	0.09	0.09	0.07
58	Dixie	16,663	16,422	13,827	10,585	0.08	0.09	0.09	0.08
59	Union	15,410	15,535	13,442	10,252	0.07	0.08	0.08	0.08
60	Gulf	14,724	15,863	14,560	11,504	0.07	0.08	0.09	0.09
61	Hamilton	14,570	14,799	13,327	10,930	0.07	0.08	0.08	0.08
62	Calhoun	14,489	14,625	13,017	11,011	0.07	0.08	0.08	0.09
63	Jefferson	14,394	14,761	12,902	11,296	0.07	0.08	0.08	0.09
64	Glades	13,609	12,884	10,576	7,591	0.06	0.07	0.07	0.06
65	Franklin	11,864	11,549	9,829	8,967	0.05	0.06	0.06	0.07
66	Lafayette	8,690	8,870	7,022	5,578	0.04	0.05	0.04	0.04
67	Liberty	8,575	8,365	7,021	5,569	0.04	0.04	0.04	0.04

* Includes US Census Bureau corrections as of February 11, 2014.

Table 7. Rank of Florida Counties by Percent Change in Population, 2010 to 2020

Rank	State and County	Percent Change	Population		Rank	State and County	Percent Change	Population	
			2020	2010				2020	2010
	FLORIDA*	14.9	21,596,068	18,801,332					
1	Sumter	51.4	141,422	93,420	34	Suwannee	9.4	45,463	41,551
2	Osceola	44.1	387,055	268,685	35	Escambia	8.8	323,714	297,619
3	St. Johns	37.8	261,900	190,039	36	Leon	8.7	299,484	275,487
4	Walton	35.8	74,724	55,043	37	Gilchrist	7.9	18,269	16,939
5	Orange	23.5	1,415,260	1,145,956	38	Pinellas	7.4	984,054	916,542
6	Lake*	23.5	366,742	297,047	39	Monroe	6.5	77,823	73,090
7	Manatee	23.4	398,503	322,833	40	DeSoto	6.4	37,082	34,862
8	Santa Rosa	22.0	184,653	151,372	41	Highlands	6.1	104,834	98,786
9	Nassau	21.7	89,258	73,314	42	Citrus	5.8	149,383	141,236
10	Lee	21.3	750,493	618,754	43	Glades	5.6	13,609	12,884
11	Collier	20.5	387,450	321,520	44	Okeechobee	5.3	42,112	39,996
12	Hillsborough	20.3	1,478,759	1,229,226	45	Baker	5.2	28,532	27,115
13	Flagler	19.3	114,173	95,696	46	Hendry	4.6	40,953	39,140
14	Polk	18.8	715,090	602,095	47	Columbia	4.6	70,617	67,531
15	Charlotte	17.5	187,904	159,978	48	Bay	3.3	174,410	168,852
16	Pasco	16.8	542,638	464,697	49	Franklin	2.7	11,864	11,549
17	St. Lucie	16.0	322,265	277,789	50	Liberty	2.5	8,575	8,365
18	Sarasota	15.6	438,816	379,448	51	Levy	2.2	41,699	40,801
19	Indian River	15.1	158,834	138,028	52	Washington	1.8	25,334	24,896
20	Clay	15.0	219,575	190,865	53	Dixie	1.5	16,663	16,422
21	Duval	13.6	982,080	864,263	54	Bradford	0.7	28,725	28,520
22	Miami-Dade*	13.5	2,832,794	2,496,457	55	Holmes	0.4	20,001	19,927
23	Okaloosa	12.8	203,951	180,822	56	Gadsden	-0.4	46,226	46,389
24	Seminole	12.8	476,727	422,718	57	Taylor	-0.6	22,436	22,570
25	Brevard	11.6	606,671	543,376	58	Union	-0.8	15,410	15,535
26	Volusia	11.5	551,588	494,593	59	Putnam	-0.9	73,723	74,364
27	Hernando	11.2	192,186	172,778	60	Calhoun	-0.9	14,489	14,625
28	Marion*	11.1	368,135	331,303	61	Hardee	-1.0	27,443	27,731
29	Palm Beach	11.1	1,466,494	1,320,134	62	Madison	-1.4	18,954	19,224
30	Broward	10.5	1,932,212	1,748,066	63	Hamilton	-1.5	14,570	14,799
31	Wakulla	10.4	33,981	30,776	64	Lafayette	-2.0	8,690	8,870
32	Martin	10.2	161,301	146,318	65	Jefferson	-2.5	14,394	14,761
33	Alachua	9.8	271,588	247,336	66	Jackson	-6.4	46,587	49,746
					67	Gulf	-7.2	14,724	15,863

* Includes US Census Bureau corrections as of February 11, 2014.

Figure 1. Percent Change in Population, 2010 to 2020

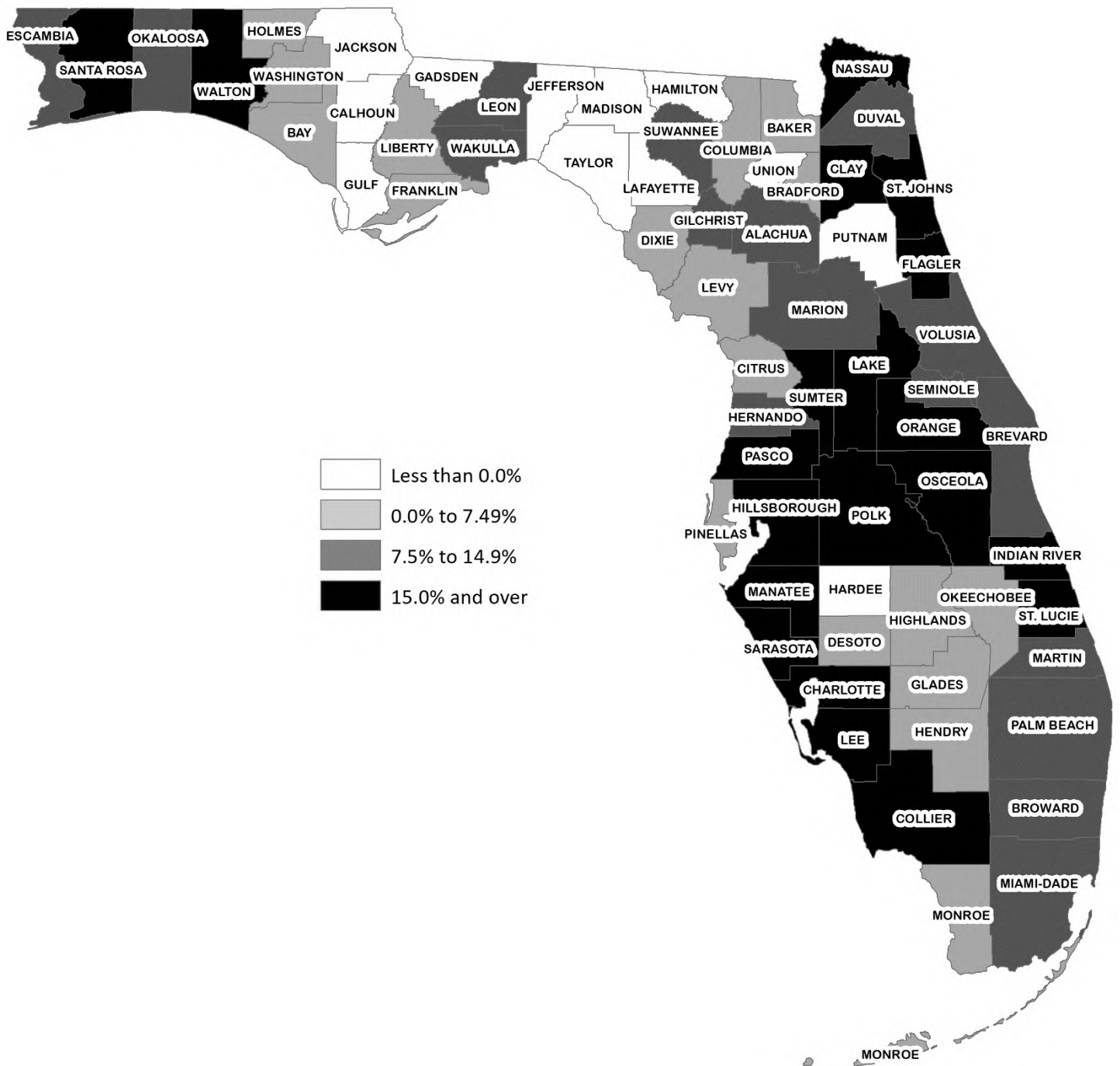


Table 8. Rank of Florida Counties by Population Change, 2010 to 2020

Rank	State and County	Change	Population		Rank	State and County	Change	Population	
			2020	2010				2020	2010
	FLORIDA*	2,794,736	21,596,068	18,801,332					
1	Miami-Dade*	336,337	2,832,794	2,496,457	34	Nassau	15,944	89,258	73,314
2	Orange	269,304	1,415,260	1,145,956	35	Martin	14,983	161,301	146,318
3	Hillsborough	249,533	1,478,759	1,229,226	36	Citrus	8,147	149,383	141,236
4	Broward	184,146	1,932,212	1,748,066	37	Highlands	6,048	104,834	98,786
5	Palm Beach	146,360	1,466,494	1,320,134	38	Bay	5,558	174,410	168,852
6	Lee	131,739	750,493	618,754	39	Monroe	4,733	77,823	73,090
7	Osceola	118,370	387,055	268,685	40	Suwannee	3,912	45,463	41,551
8	Duval	117,817	982,080	864,263	41	Wakulla	3,205	33,981	30,776
9	Polk	112,995	715,090	602,095	42	Columbia	3,086	70,617	67,531
10	Pasco	77,941	542,638	464,697	43	DeSoto	2,220	37,082	34,862
11	Manatee	75,670	398,503	322,833	44	Okeechobee	2,116	42,112	39,996
12	St. Johns	71,861	261,900	190,039	45	Hendry	1,813	40,953	39,140
13	Lake*	69,695	366,742	297,047	46	Baker	1,417	28,532	27,115
14	Pinellas	67,512	984,054	916,542	47	Gilchrist	1,330	18,269	16,939
15	Collier	65,930	387,450	321,520	48	Levy	898	41,699	40,801
16	Brevard	63,295	606,671	543,376	49	Glades	725	13,609	12,884
17	Sarasota	59,368	438,816	379,448	50	Washington	438	25,334	24,896
18	Volusia	56,995	551,588	494,593	51	Franklin	315	11,864	11,549
19	Seminole	54,009	476,727	422,718	52	Dixie	241	16,663	16,422
20	Sumter	48,002	141,422	93,420	53	Liberty	210	8,575	8,365
21	St. Lucie	44,476	322,265	277,789	54	Bradford	205	28,725	28,520
22	Marion*	36,832	368,135	331,303	55	Holmes	74	20,001	19,927
23	Santa Rosa	33,281	184,653	151,372	56	Union	-125	15,410	15,535
24	Clay	28,710	219,575	190,865	57	Taylor	-134	22,436	22,570
25	Charlotte	27,926	187,904	159,978	58	Calhoun	-136	14,489	14,625
26	Escambia	26,095	323,714	297,619	59	Gadsden	-163	46,226	46,389
27	Alachua	24,252	271,588	247,336	60	Lafayette	-180	8,690	8,870
28	Leon	23,997	299,484	275,487	61	Hamilton	-229	14,570	14,799
29	Okaloosa	23,129	203,951	180,822	62	Madison	-270	18,954	19,224
30	Indian River	20,806	158,834	138,028	63	Hardee	-288	27,443	27,731
31	Walton	19,681	74,724	55,043	64	Jefferson	-367	14,394	14,761
32	Hernando	19,408	192,186	172,778	65	Putnam	-641	73,723	74,364
33	Flagler	18,477	114,173	95,696	66	Gulf	-1,139	14,724	15,863
					67	Jackson	-3,159	46,587	49,746

* Includes US Census Bureau corrections as of February 11, 2014.

Figure 2. Population Change, 2010 to 2020

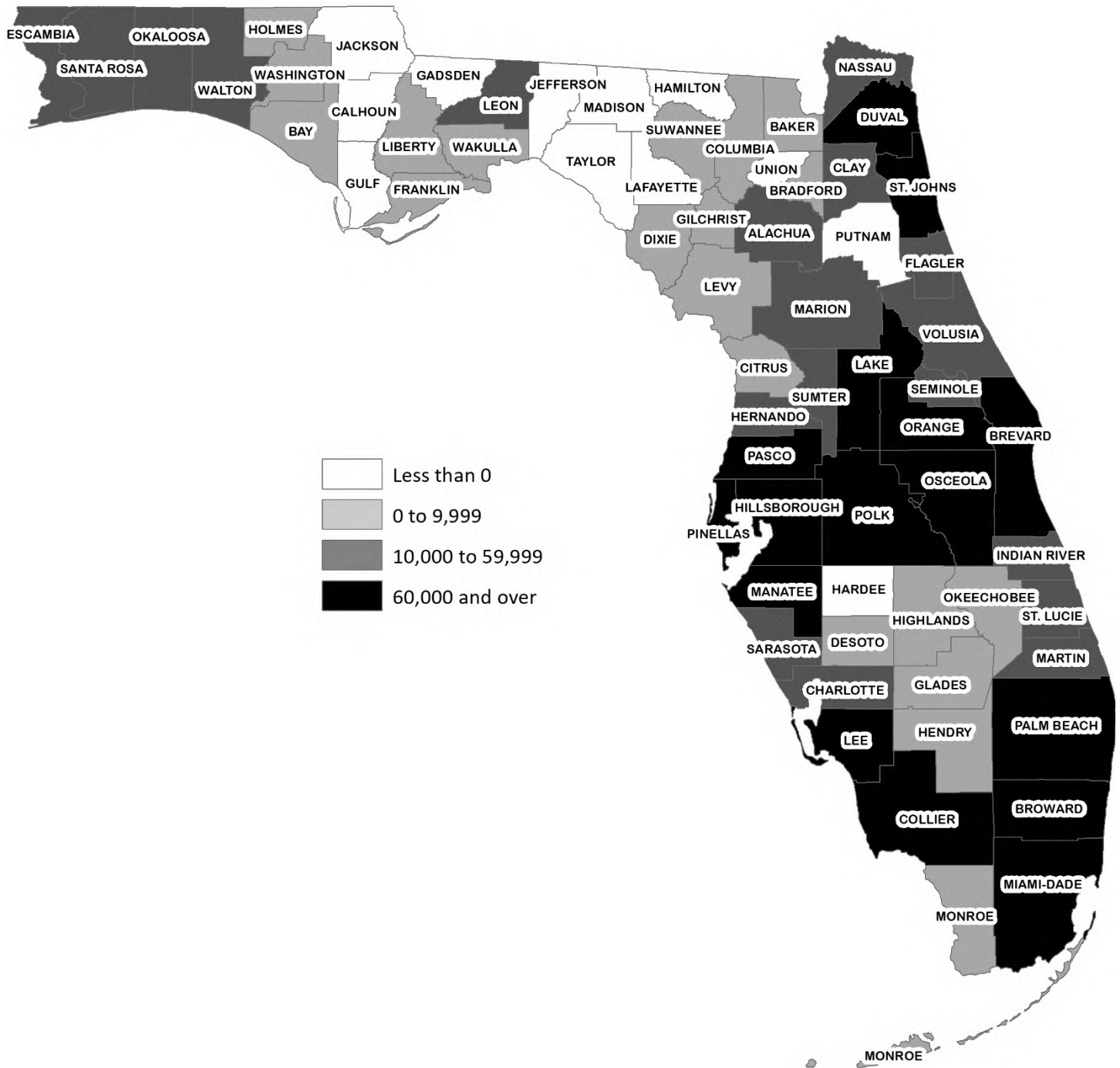


Table 9. Rank of Top 100 Cities in Florida by Population Size, 2000 to 2020

City	Population			Rank			Percent Change	
	2020	2010	2000	2020	2010	2000	2010 to 2020	2000 to 2010
Jacksonville	936,250	821,784	735,617	1	1	1	13.9	11.7
Miami*	497,924	399,508	362,470	2	2	2	24.6	10.2
Tampa	392,953	335,709	303,447	3	3	3	17.1	10.6
Orlando	298,943	238,300	185,951	4	5	6	25.4	28.2
St. Petersburg	271,044	244,769	248,232	5	4	4	10.7	-1.4
Hialeah*	239,956	224,667	226,419	6	6	5	6.8	-0.8
Port St. Lucie	202,914	164,603	88,769	7	9	15	23.3	85.4
Tallahassee	198,627	181,376	150,624	8	7	8	9.5	20.4
Fort Lauderdale	189,321	165,521	152,397	9	8	7	14.4	8.6
Cape Coral	187,307	154,305	102,286	10	10	13	21.4	50.9
Pembroke Pines*	168,949	154,019	137,427	11	11	10	9.7	12.1
Hollywood	151,818	140,768	139,368	12	12	9	7.8	1.0
Miramar	138,873	122,041	72,739	13	14	25	13.8	67.8
Gainesville*	135,097	124,476	95,447	14	13	14	8.5	30.4
Coral Springs	129,263	121,096	117,549	15	15	11	6.7	3.0
Palm Bay	118,568	103,190	79,413	16	18	20	14.9	29.9
Clearwater	118,017	107,685	108,789	17	16	12	9.6	-1.0
West Palm Beach*	116,781	100,343	82,103	18	19	19	16.4	22.2
Miami Gardens*	114,363	107,166	(X)	19	17	(X)	6.7	(X)
Pompano Beach	112,941	99,845	78,191	20	20	22	13.1	27.7
Lakeland	109,238	97,422	78,452	21	21	21	12.1	24.2
Davie	105,050	91,992	75,720	22	22	23	14.2	21.5
Boca Raton	95,139	84,392	74,764	23	27	24	12.7	12.9
Sunrise	94,333	84,439	85,787	24	26	17	11.7	-1.6
Miami Beach*	94,161	87,778	87,933	25	23	16	7.3	-0.2
Deltona	93,677	85,182	69,543	26	24	27	10.0	22.5
Fort Myers	92,599	62,298	48,208	27	35	41	48.6	29.2
Plantation	90,802	84,955	82,934	28	25	18	6.9	2.4
Palm Coast	89,437	75,180	32,732	29	30	62	19.0	129.7
Largo	84,574	77,648	69,371	30	28	28	8.9	11.9
Melbourne*	84,402	76,205	71,382	31	29	26	10.8	6.8
Deerfield Beach	80,178	75,018	64,585	32	31	29	6.9	16.2
Boynton Beach	78,495	68,217	60,389	33	32	31	15.1	13.0
North Port	77,561	57,357	22,797	34	42	80	35.2	151.6
Homestead*	76,334	60,509	31,909	35	38	64	26.2	89.6
Kissimmee	75,644	59,682	47,814	36	40	42	26.7	24.8
Lauderhill	72,507	66,887	57,585	37	33	34	8.4	16.2
Doral*	71,314	45,709	(X)	38	56	(X)	56.0	(X)
Daytona Beach	70,235	61,005	64,112	39	36	30	15.1	-4.8
Weston	67,438	65,333	49,286	40	34	40	3.2	32.6
Delray Beach	67,168	60,522	60,020	41	37	32	11.0	0.8
Tamarac	66,089	60,427	55,588	42	39	36	9.4	8.7
North Miami*	65,089	58,912	59,880	43	41	33	10.5	-1.6
Jupiter	63,188	55,156	39,328	44	46	51	14.6	40.2
Port Orange	62,832	56,048	45,823	45	45	44	12.1	22.3
Wellington	62,650	56,508	38,216	46	43	53	10.9	47.9
Ocala	62,023	56,315	45,943	47	44	43	10.1	22.6
Sanford	61,791	53,570	38,291	48	47	52	15.3	39.9
Margate	59,351	53,284	53,909	49	48	37	11.4	-1.2
Coconut Creek	58,803	52,909	43,566	50	49	46	11.1	21.4
Bradenton	58,621	49,546	49,504	51	52	39	18.3	0.1
Sarasota	57,683	51,917	52,715	52	51	38	11.1	-1.5

Table 9. Rank of Top 100 Cities in Florida by Population Size, 2000 to 2020

(Continued)

City	Population			Rank			Percent Change	
	2020	2010	2000	2020	2010	2000	2010 to 2020	2000 to 2010
Palm Beach Gardens*	56,709	48,440	35,058	53	54	59	17.1	38.2
Bonita Springs*	55,645	43,857	32,797	54	57	61	26.9	33.7
Pensacola	55,498	51,923	56,255	55	50	35	6.9	-7.7
Pinellas Park	54,202	49,079	45,658	56	53	45	10.4	7.5
Apopka	53,632	41,542	26,642	57	60	72	29.1	55.9
Coral Gables*	51,133	46,776	42,249	58	55	47	9.3	10.7
St. Cloud	50,897	35,183	20,074	59	73	88	44.7	75.3
Ocoee	49,781	35,579	24,391	60	70	77	39.9	45.9
Titusville	48,685	43,761	40,670	61	58	50	11.3	7.6
Winter Garden	48,469	34,568	14,351	62	76	111	40.2	140.9
North Miami Beach	47,722	41,523	40,786	63	61	49	14.9	1.8
Winter Haven	47,044	33,874	26,487	64	78	73	38.9	27.9
Oakland Park	45,709	41,363	30,966	65	63	66	10.5	33.6
North Lauderdale	45,549	41,023	32,264	66	64	63	11.0	27.1
Cutler Bay	45,480	40,286	(X)	67	65	(X)	12.9	(X)
Altamonte Springs	45,304	41,496	41,200	68	62	48	9.2	0.7
Fort Pierce	44,476	41,590	37,516	69	59	54	6.9	10.9
Clermont	44,301	28,742	9,338	70	85	156	54.1	207.8
Ormond Beach	41,782	38,137	36,301	71	66	56	9.6	5.1
Oviedo	40,145	33,342	26,316	72	79	74	20.4	26.7
Greenacres	39,945	37,573	27,569	73	67	71	6.3	36.3
Hallandale Beach	39,945	37,113	34,282	74	68	60	7.6	8.3
Plant City	39,846	34,721	29,760	75	75	69	14.8	16.7
Royal Palm Beach	39,801	34,140	21,523	76	77	81	16.6	58.6
Lake Worth	38,875	34,910	35,133	77	74	58	11.4	-0.6
Winter Springs	38,760	33,282	30,860	78	80	67	16.5	7.8
Aventura	38,041	35,762	25,267	79	69	76	6.4	41.5
Dunedin	37,869	35,321	35,691	80	72	57	7.2	-1.0
DeLand	37,043	27,031	20,904	81	88	86	37.0	29.3
Lauderdale Lakes	36,527	32,593	31,705	82	81	65	12.1	2.8
Riviera Beach	36,057	32,488	29,884	83	82	68	11.0	8.7
Parkland	35,438	23,962	13,835	84	93	115	47.9	73.2
Panama City*	34,517	35,505	36,417	85	71	55	-2.8	-2.5
Cooper City	34,006	28,547	27,914	86	86	70	19.1	2.3
Estero**	33,120	(X)	(X)	87	(X)	(X)	(X)	(X)
Miami Lakes	32,299	29,361	(X)	88	84	(X)	10.0	(X)
Dania Beach	32,215	29,639	20,061	89	83	89	8.7	47.7
Winter Park	30,630	27,852	24,090	90	87	78	10.0	15.6
Casselberry	30,341	26,241	23,438	91	89	79	15.6	12.0
New Smyrna Beach	28,594	22,464	20,048	92	96	90	27.3	12.1
Rockledge	27,946	24,926	20,170	93	90	87	12.1	23.6
Haines City*	27,268	20,560	13,174	94	104	120	32.6	56.1
Temple Terrace	26,832	24,541	20,918	95	92	85	9.3	17.3
Crestview	26,178	20,978	14,766	96	100	109	24.8	42.1
Tarpon Springs	25,937	23,484	21,003	97	94	82	10.4	11.8
Sebastian	25,658	21,929	16,181	98	97	99	17.0	35.5
West Melbourne	25,385	18,355	9,824	99	112	149	38.3	86.8
Palmetto Bay*	24,870	23,408	(X)	100	95	(X)	6.2	(X)

(X) Not incorporated at that time.

* Includes US Census Bureau corrections as of February 11, 2014.

** The City of Estero was incorporated on December 31, 2014.

Table 10. Rank of Top 100 Cities in Florida by Percent Change in Population, 2010 to 2020

Rank	City	Percent Change	Population		Rank	City	Percent Change	Population	
			2020	2010				2020	2010
1	Freeport	222.6	5,765	1,787	51	High Springs	24.3	6,652	5,350
2	Wildwood	158.7	17,354	6,709	52	Eagle Lake	23.5	2,785	2,255
3	Davenport	153.6	7,323	2,888	53	Port St. Lucie	23.3	202,914	164,603
4	Fruitland Park	150.3	10,206	4,078	54	Belle Isle	23.2	7,378	5,988
5	Lake Buena Vista	140.0	24	10	55	Mount Dora	22.9	15,200	12,370
6	Groveland	135.0	20,510	8,729	56	Westville	22.8	355	289
7	Sweetwater	65.6	22,348	13,499	57	Windermere	22.8	3,024	2,462
8	Polk City	59.4	2,490	1,562	58	Punta Gorda	22.6	20,405	16,641
9	Doral*	56.0	71,314	45,709	59	Milton	22.0	10,767	8,826
10	Howey-in-the-Hills	55.0	1,702	1,098	60	Leesburg	22.0	24,539	20,117
11	Clermont	54.1	44,301	28,742	61	Umatilla	21.4	4,196	3,456
12	Oakland	50.1	3,809	2,538	62	Cape Coral	21.4	187,307	154,305
13	West Miami	49.5	8,915	5,965	63	Ocean Breeze	20.6	428	355
14	Fort Myers	48.6	92,599	62,298	64	Oviedo	20.4	40,145	33,342
15	Parkland	47.9	35,438	23,962	65	Bartow	20.0	20,757	17,298
16	St. Cloud	44.7	50,897	35,183	66	Callahan	19.9	1,347	1,123
17	Winter Garden	40.2	48,469	34,568	67	Florida City	19.2	13,405	11,245
18	Minneola	40.1	13,175	9,403	68	Cooper City	19.1	34,006	28,547
19	Ocoee	39.9	49,781	35,579	69	Palm Coast	19.0	89,437	75,180
20	Winter Haven	38.9	47,044	33,874	70	Opa-locka	18.9	18,090	15,219
21	Newberry	38.8	6,873	4,950	71	Bell	18.9	542	456
22	Dundee	38.8	5,159	3,717	72	Medley	18.7	995	838
23	West Melbourne	38.3	25,385	18,355	73	Bellevue	18.7	5,330	4,492
24	DeLand	37.0	37,043	27,031	74	Fanning Springs	18.6	906	764
25	North Port	35.2	77,561	57,357	75	Bradenton	18.3	58,621	49,546
26	Maitland	34.0	21,113	15,751	76	San Antonio	18.0	1,343	1,138
27	Haines City*	32.6	27,268	20,560	77	St. Augustine	18.0	15,306	12,975
28	Gulf Stream	31.3	1,032	786	78	Fernandina Beach	17.8	13,534	11,487
29	Bunnell	31.1	3,507	2,676	79	Center Hill	17.8	1,164	988
30	Montverde	29.9	1,901	1,463	80	St. Marks	17.7	345	293
31	Apopka	29.1	53,632	41,542	81	Oak Hill	17.7	2,110	1,792
32	Zephyrhills	28.6	17,092	13,288	82	Shalimar	17.7	844	717
33	Lake Placid	27.8	2,840	2,223	83	Niceville	17.5	14,976	12,749
34	Lake Mary	27.6	17,633	13,822	84	Longwood	17.4	16,036	13,657
35	New Smyrna	27.3	28,594	22,464	85	Orange City	17.3	12,436	10,599
36	North Bay Village	27.0	9,064	7,137	86	Palm Beach Gardens*	17.1	56,709	48,440
37	Bonita Springs*	26.9	55,645	43,857	87	Tampa	17.1	392,953	335,709
38	Avon Park	26.8	11,201	8,836	88	Sebastian	17.0	25,658	21,929
39	Auburndale	26.7	17,120	13,507	89	Grant-Valkaria	16.7	4,492	3,850
40	Kissimmee	26.7	75,644	59,682	90	Bal Harbour	16.7	2,932	2,513
41	Lake Alfred	26.6	6,351	5,015	91	Lazy Lake	16.7	28	24
42	Lake Hamilton	26.4	1,556	1,231	92	Green Cove Springs	16.6	8,054	6,908
43	Mascotte	26.4	6,447	5,101	93	Royal Palm Beach	16.6	39,801	34,140
44	Palm Shores	26.3	1,137	900	94	Winter Springs	16.5	38,760	33,282
45	Homestead*	26.2	76,334	60,509	95	West Palm Beach*	16.4	116,781	100,343
46	Palm Springs	26.1	23,867	18,928	96	Brooksville	16.4	8,983	7,719
47	Orlando	25.4	298,943	238,300	97	Eustis	16.4	21,594	18,558
48	Crestview	24.8	26,178	20,978	98	Lantana	15.9	12,081	10,423
49	Tavares	24.7	17,395	13,951	99	Venice	15.8	24,016	20,748
50	Miami*	24.6	497,924	399,508	100	Highland Park	15.7	266	230

* Includes US Census Bureau corrections as of February 11, 2014.

Table 11. Rank of Top 100 Cities in Florida by Population Change, 2010 to 2020

Rank	City	Change	Population		Rank	City	Change	Population	
			2020	2010				2020	2010
1	Jacksonville	114,466	936,250	821,784	51	West Melbourne	7,030	25,385	18,355
2	Miami*	98,416	497,924	399,508	52	Largo	6,926	84,574	77,648
3	Orlando	60,643	298,943	238,300	53	Oviedo	6,803	40,145	33,342
4	Tampa	57,244	392,953	335,709	54	Port Orange	6,784	62,832	56,048
5	Port St. Lucie	38,311	202,914	164,603	55	Haines City*	6,708	27,268	20,560
6	Cape Coral	33,002	187,307	154,305	56	Delray Beach	6,646	67,168	60,522
7	Fort Myers	30,301	92,599	62,298	57	Miami Beach*	6,383	94,161	87,778
8	St. Petersburg	26,275	271,044	244,769	58	North Miami Beach	6,199	47,722	41,523
9	Doral*	25,605	71,314	45,709	59	North Miami*	6,177	65,089	58,912
10	Fort Lauderdale	23,800	189,321	165,521	60	Wellington	6,142	62,650	56,508
11	North Port	20,204	77,561	57,357	61	New Smyrna Beach	6,130	28,594	22,464
12	Tallahassee	17,251	198,627	181,376	62	Fruitland Park	6,128	10,206	4,078
13	Miramar	16,832	138,873	122,041	63	Margate	6,067	59,351	53,284
14	West Palm Beach*	16,438	116,781	100,343	64	Coconut Creek	5,894	58,803	52,909
15	Kissimmee	15,962	75,644	59,682	65	Plantation	5,847	90,802	84,955
16	Homestead*	15,825	76,334	60,509	66	Sarasota	5,766	57,683	51,917
17	St. Cloud	15,714	50,897	35,183	67	Ocala	5,708	62,023	56,315
18	Clermont	15,559	44,301	28,742	68	Tamarac	5,662	66,089	60,427
19	Palm Bay	15,378	118,568	103,190	69	Royal Palm Beach	5,661	39,801	34,140
20	Hialeah	15,289	239,956	224,667	70	Lauderhill	5,620	72,507	66,887
21	Pembroke Pines*	14,930	168,949	154,019	71	Winter Springs	5,478	38,760	33,282
22	Palm Coast	14,257	89,437	75,180	72	Cooper City	5,459	34,006	28,547
23	Ocoee	14,202	49,781	35,579	73	Maitland	5,362	21,113	15,751
24	Winter Garden	13,901	48,469	34,568	74	Crestview	5,200	26,178	20,978
25	Winter Haven	13,170	47,044	33,874	75	Cutler Bay	5,194	45,480	40,286
26	Pompano Beach	13,096	112,941	99,845	76	Deerfield Beach	5,160	80,178	75,018
27	Davie	13,058	105,050	91,992	77	Plant City	5,125	39,846	34,721
28	Apopka	12,090	53,632	41,542	78	Pinellas Park	5,123	54,202	49,079
29	Lakeland	11,816	109,238	97,422	79	Palm Springs	4,939	23,867	18,928
30	Bonita Springs*	11,788	55,645	43,857	80	Titusville	4,924	48,685	43,761
31	Groveland	11,781	20,510	8,729	81	North Lauderdale	4,526	45,549	41,023
32	Parkland	11,476	35,438	23,962	82	Davenport	4,435	7,323	2,888
33	Hollywood	11,050	151,818	140,768	83	Leesburg	4,422	24,539	20,117
34	Boca Raton	10,747	95,139	84,392	84	Coral Gables*	4,357	51,133	46,776
35	Wildwood	10,645	17,354	6,709	85	Oakland Park	4,346	45,709	41,363
36	Gainesville*	10,621	135,097	124,476	86	Casselberry	4,100	30,341	26,241
37	Clearwater	10,332	118,017	107,685	87	Freeport	3,978	5,765	1,787
38	Boynton Beach	10,278	78,495	68,217	88	Lake Worth	3,965	38,875	34,910
39	DeLand	10,012	37,043	27,031	89	Lauderdale Lakes	3,934	36,527	32,593
40	Sunrise	9,894	94,333	84,439	90	Lake Mary	3,811	17,633	13,822
41	Daytona Beach	9,230	70,235	61,005	91	Altamonte Springs	3,808	45,304	41,496
42	Bradenton	9,075	58,621	49,546	92	Zephyrhills	3,804	17,092	13,288
43	Sweetwater	8,849	22,348	13,499	93	Minneola	3,772	13,175	9,403
44	Deltona	8,495	93,677	85,182	94	Punta Gorda	3,764	20,405	16,641
45	Palm Beach Gardens*	8,269	56,709	48,440	95	Sebastian	3,729	25,658	21,929
46	Sanford	8,221	61,791	53,570	96	Ormond Beach	3,645	41,782	38,137
47	Melbourne*	8,197	84,402	76,205	97	Auburndale	3,613	17,120	13,507
48	Coral Springs	8,167	129,263	121,096	98	Pensacola	3,575	55,498	51,923
49	Jupiter	8,032	63,188	55,156	99	Riviera Beach	3,569	36,057	32,488
50	Miami Gardens*	7,197	114,363	107,166	100	Bartow	3,459	20,757	17,298

* Includes US Census Bureau corrections as of February 11, 2014.

Table 12. Age Distribution (Percentage) of the Population of Florida and Its Counties, 1990 to 2019

State and County		Population				State and County		Population			
		2019	2010	2000	1990			2019	2010	2000	1990
FLORIDA	0-17	20.3	21.3	22.8	22.3	Citrus	0-17	14.8	15.9	17.2	17.7
	18-44	33.5	34.4	36.9	39.8		18-44	21.3	21.9	23.7	26.8
	45-64	26.1	27.0	22.7	19.7		45-64	29.2	30.3	26.9	24.3
	65+	20.1	17.3	17.6	18.2		65+	34.7	31.9	32.2	31.2
Alachua	0-17	17.7	17.9	20.2	21.9	Clay	0-17	24.3	26.3	28.0	28.9
	18-44	47.5	48.4	50.9	54.3		18-44	33.6	34.2	38.2	43.7
	45-64	20.1	22.9	19.3	14.5		45-64	26.6	27.8	24.0	18.9
	65+	14.7	10.8	9.6	9.2		65+	15.4	11.7	9.8	8.4
Baker	0-17	23.8	26.0	27.5	30.7	Collier	0-17	18.3	19.5	19.9	20.1
	18-44	36.0	36.7	40.6	44.1		18-44	27.6	28.0	31.2	35.3
	45-64	26.4	26.4	22.7	17.4		45-64	25.4	26.1	24.5	21.9
	65+	13.8	10.9	9.2	7.8		65+	28.7	26.4	24.5	22.7
Bay	0-17	21.6	22.0	24.0	25.6	Columbia	0-17	21.1	22.5	25.4	28.1
	18-44	34.5	35.4	38.8	42.3		18-44	33.2	33.9	36.7	38.5
	45-64	26.5	28.1	23.7	20.2		45-64	26.4	28.2	24.0	20.2
	65+	17.4	14.5	13.4	11.9		65+	19.2	15.4	14.0	13.2
Bradford	0-17	19.6	19.8	21.9	24.1	DeSoto	0-17	21.4	22.5	22.7	24.0
	18-44	35.8	37.6	41.6	44.2		18-44	35.2	35.8	37.9	36.9
	45-64	26.5	28.2	23.5	19.6		45-64	24.2	23.8	20.5	19.8
	65+	18.1	14.4	12.9	12.1		65+	19.2	17.9	19.0	19.2
Brevard	0-17	18.5	19.8	22.0	22.0	Dixie	0-17	17.9	19.1	22.1	24.6
	18-44	28.7	29.4	33.9	39.9		18-44	29.3	30.3	34.6	36.7
	45-64	29.1	30.4	24.3	21.5		45-64	29.5	31.2	26.2	24.2
	65+	23.7	20.4	19.9	16.6		65+	23.4	19.3	17.1	14.5
Broward	0-17	21.0	22.4	23.6	20.6	Duval	0-17	22.8	23.5	26.3	26.0
	18-44	34.8	35.6	38.6	40.2		18-44	37.6	38.9	42.0	46.0
	45-64	27.2	27.7	21.7	18.6		45-64	25.0	26.4	21.2	17.4
	65+	16.9	14.3	16.1	20.7		65+	14.5	11.1	10.5	10.6
Calhoun	0-17	20.8	21.4	23.2	26.2	Escambia	0-17	21.6	21.6	23.5	25.4
	18-44	33.6	36.0	40.5	39.9		18-44	35.8	37.2	41.1	43.3
	45-64	26.6	27.2	22.3	19.5		45-64	24.8	26.8	22.0	19.5
	65+	19.0	15.4	14.0	14.5		65+	17.8	14.4	13.3	11.9
Charlotte	0-17	13.1	14.3	15.7	15.7	Flagler	0-17	18.4	19.9	17.9	19.2
	18-44	20.7	21.2	23.3	26.9		18-44	28.2	26.9	25.1	29.6
	45-64	28.8	30.4	26.4	23.8		45-64	25.3	28.7	28.3	25.8
	65+	37.4	34.1	34.7	33.6		65+	28.1	24.5	28.6	25.4

Table 12. Age Distribution (Percentage) of the Population of Florida and Its Counties, 1990 to 2019 (Continued)

State and County		Population				State and County		Population			
		2019	2010	2000	1990			2019	2010	2000	1990
Franklin	0-17	17.1	17.1	20.2	24.1	Highlands	0-17	17.3	18.2	19.2	18.9
	18-44	34.5	36.2	32.6	33.6		18-44	23.6	24.3	25.6	26.0
	45-64	26.8	29.3	29.5	24.6		45-64	24.9	25.3	22.2	21.9
	65+	21.6	17.4	17.7	17.7		65+	34.2	32.2	33.0	33.2
Gadsden	0-17	22.1	24.2	26.4	29.8	Hillsborough	0-17	23.4	23.9	25.3	24.4
	18-44	33.3	33.6	38.4	39.5		18-44	38.2	38.8	41.0	44.8
	45-64	27.1	28.6	23.0	18.1		45-64	24.5	25.4	21.7	18.6
	65+	17.6	13.6	12.2	12.5		65+	13.9	11.8	12.0	12.2
Gilchrist	0-17	19.8	21.4	24.4	25.2	Holmes	0-17	20.4	21.5	23.1	25.0
	18-44	31.3	33.9	39.1	40.4		18-44	31.3	33.6	38.1	38.1
	45-64	27.2	27.8	22.9	20.8		45-64	27.3	27.7	24.0	21.2
	65+	21.7	16.9	13.6	13.6		65+	21.0	17.2	14.8	15.7
Glades	0-17	17.5	18.8	22.1	24.6	Indian River	0-17	17.4	18.8	19.2	19.5
	18-44	32.1	33.7	34.6	31.2		18-44	25.4	25.9	28.3	31.8
	45-64	25.4	26.0	24.5	24.8		45-64	26.8	28.1	23.3	21.6
	65+	24.9	21.5	18.8	19.3		65+	30.4	27.2	29.2	27.1
Gulf	0-17	18.5	16.2	19.9	24.8	Jackson	0-17	19.4	19.9	22.3	25.0
	18-44	27.2	37.4	39.8	37.2		18-44	34.1	36.2	39.3	40.5
	45-64	29.4	30.0	25.4	22.9		45-64	26.6	28.2	23.8	19.7
	65+	24.9	16.3	14.9	15.2		65+	19.8	15.7	14.6	14.9
Hamilton	0-17	18.6	19.7	23.5	29.0	Jefferson	0-17	17.8	18.6	22.7	29.1
	18-44	35.7	39.4	42.5	42.3		18-44	29.8	32.6	37.1	37.2
	45-64	26.9	27.8	22.8	17.3		45-64	30.3	32.3	25.7	19.0
	65+	18.8	13.1	11.2	11.4		65+	22.1	16.5	14.5	14.8
Hardee	0-17	26.6	27.7	27.6	29.4	Lafayette	0-17	21.6	20.1	21.7	24.9
	18-44	36.3	37.4	39.3	36.5		18-44	37.9	43.4	44.7	45.2
	45-64	22.5	22.0	19.2	19.0		45-64	24.5	24.3	21.3	18.9
	65+	14.6	12.9	13.9	15.1		65+	16.1	12.2	12.4	11.0
Hendry	0-17	27.7	27.8	30.0	31.7	Lake	0-17	19.6	20.8	20.3	20.0
	18-44	35.4	38.6	41.6	39.0		18-44	28.0	28.3	29.5	30.5
	45-64	22.8	22.1	18.3	18.5		45-64	26.6	26.7	23.8	22.1
	65+	14.0	11.5	10.1	10.9		65+	25.8	24.2	26.4	27.4
Hernando	0-14	18.4	19.8	18.9	18.5	Lee	0-17	18.6	19.5	19.6	19.7
	15-44	26.7	26.6	25.8	27.3		18-44	29.8	29.7	30.1	34.0
	45-64	26.7	27.9	24.4	23.6		45-64	25.8	27.3	24.8	21.7
	65+	28.3	25.8	30.9	30.6		65+	25.9	23.5	25.4	24.6

Table 12. Age Distribution (Percentage) of the Population of Florida and Its Counties, 1990 to 2019 (Continued)

State and County		Population				State and County		Population			
		2019	2010	2000	1990			2019	2010	2000	1990
Leon	0-17	19.1	19.6	21.3	22.6	Nassau	0-17	19.9	21.7	25.0	27.2
	18-44	46.4	48.0	50.4	54.2		18-44	29.0	31.1	36.0	41.5
	45-64	20.9	23.0	20.0	15.1		45-64	28.9	30.9	26.3	21.2
	65+	13.6	9.4	8.3	8.2		65+	22.2	16.2	12.6	10.1
Levy	0-17	19.6	21.1	23.6	24.4	Okaloosa	0-17	22.1	22.3	24.7	26.0
	18-44	28.3	28.8	31.9	34.2		18-44	35.2	36.0	40.7	45.4
	45-64	28.7	30.6	26.6	22.6		45-64	25.7	27.7	22.4	19.4
	65+	23.4	19.4	17.9	18.8		65+	17.0	13.9	12.1	9.2
Liberty	0-17	20.1	21.2	21.8	24.3	Okeechobee	0-17	22.7	24.0	25.2	27.4
	18-44	40.3	41.1	47.0	46.0		18-44	34.1	34.2	36.5	36.3
	45-64	27.1	27.1	21.0	18.5		45-64	24.5	24.9	21.9	20.3
	65+	12.5	10.6	10.2	11.2		65+	18.7	17.0	16.3	16.0
Madison	0-17	21.5	21.8	25.3	27.7	Orange	0-17	23.1	23.6	25.3	24.0
	18-44	32.0	34.2	37.5	39.7		18-44	41.4	42.6	44.7	48.1
	45-64	26.5	28.2	22.7	18.6		45-64	23.5	24.1	20.0	17.3
	65+	20.1	15.8	14.6	14.0		65+	12.0	9.7	10.0	10.6
Manatee	0-17	19.4	20.5	20.7	19.3	Osceola	0-17	24.5	26.2	26.8	25.3
	18-44	27.7	28.6	31.2	33.0		18-44	36.4	37.6	40.2	41.8
	45-64	26.5	27.6	23.3	19.8		45-64	25.6	25.2	21.6	19.0
	65+	26.4	23.3	24.9	28.0		65+	13.4	11.0	11.4	13.8
Marion	0-17	18.3	19.4	21.4	22.3	Palm Beach	0-17	19.5	20.4	21.3	19.8
	18-44	26.4	27.6	30.2	34.0		18-44	31.3	31.6	33.5	37.0
	45-64	26.3	27.3	23.9	21.7		45-64	25.5	26.4	22.0	19.0
	65+	29.0	25.8	24.5	22.0		65+	23.6	21.6	23.2	24.2
Martin	0-17	15.8	17.6	18.6	17.7	Pasco	0-17	20.3	21.2	20.2	18.0
	18-44	25.3	25.4	28.2	33.2		18-44	30.7	30.7	30.0	29.4
	45-64	28.3	29.7	24.9	21.8		45-64	26.0	27.4	23.1	20.4
	65+	30.5	27.3	28.2	27.3		65+	23.0	20.7	26.8	32.2
Miami-Dade	0-17	20.5	21.9	24.8	24.3	Pinellas	0-17	16.9	17.8	19.3	17.9
	18-44	36.7	38.5	40.1	41.5		18-44	29.0	30.3	33.8	36.0
	45-64	26.5	25.6	21.7	20.3		45-64	28.9	30.8	24.5	20.2
	65+	16.4	14.1	13.3	13.9		65+	25.2	21.2	22.5	25.9
Monroe	0-17	14.7	15.1	17.1	17.5	Polk	0-17	22.5	23.5	24.4	24.3
	18-44	31.0	32.5	37.4	43.0		18-44	32.1	32.8	34.7	37.0
	45-64	30.9	35.4	30.9	23.7		45-64	24.9	25.6	22.5	20.3
	65+	23.3	17.1	14.6	15.8		65+	20.5	18.0	18.3	18.4

Table 12. Age Distribution (Percentage) of the Population of Florida and Its Counties, 1990 to 2019 (Continued)

State and County		Population				State and County		Population			
		2019	2010	2000	1990			2019	2010	2000	1990
Putnam	0-17	21.6	22.6	24.6	25.6	Suwannee	0-17	21.3	22.7	24.0	26.6
	18-44	28.6	29.3	31.9	34.6		18-44	30.8	30.7	33.6	34.8
	45-64	27.4	29.2	25.1	22.0		45-64	26.0	27.7	25.4	21.8
	65+	22.3	18.9	18.5	17.8		65+	22.0	18.9	16.9	16.8
St. Johns	0-17	21.4	23.1	23.1	22.5	Taylor	0-17	19.7	19.7	24.6	28.3
	18-44	31.2	31.0	34.6	40.0		18-44	31.5	35.5	36.6	37.7
	45-64	27.7	30.2	26.4	21.2		45-64	27.1	29.2	24.8	20.7
	65+	19.6	15.7	15.9	16.3		65+	21.7	15.6	14.1	13.3
St. Lucie	0-17	21.1	22.3	22.6	23.2	Union	0-17	17.7	19.4	21.8	25.7
	18-44	30.8	31.0	31.7	35.7		18-44	38.1	38.8	48.5	50.4
	45-64	26.3	26.7	23.0	20.2		45-64	31.2	31.9	22.2	16.5
	65+	21.8	19.9	22.7	20.8		65+	13.0	10.0	7.5	7.5
Santa Rosa	0-17	22.2	23.9	26.6	27.2	Volusia	0-17	18.2	18.9	20.3	19.8
	18-44	34.7	34.5	38.3	42.9		18-44	29.6	30.8	33.5	37.3
	45-64	27.2	28.7	24.1	20.4		45-64	28.0	29.3	24.2	20.2
	65+	15.9	12.9	11.0	9.5		65+	24.3	21.1	22.1	22.7
Sarasota	0-17	14.7	15.7	16.2	15.8	Wakulla	0-17	21.4	22.5	25.6	28.3
	18-44	23.8	24.1	26.7	30.3		18-44	36.5	37.4	39.3	39.6
	45-64	26.6	29.0	25.6	21.8		45-64	27.8	29.3	24.7	20.5
	65+	34.9	31.2	31.5	32.1		65+	14.3	10.8	10.3	11.5
Seminole	0-17	21.7	23.0	25.4	25.5	Walton	0-17	20.4	20.6	21.7	23.9
	18-44	36.9	37.0	40.4	45.3		18-44	32.1	33.1	35.6	35.7
	45-64	25.9	28.0	23.6	19.0		45-64	28.4	30.1	26.9	24.1
	65+	15.4	12.0	10.6	10.3		65+	19.1	16.2	15.8	16.4
Sumter	0-17	8.5	9.1	16.1	22.4	Washington	0-17	20.0	21.2	23.4	25.4
	18-44	16.5	18.6	29.2	33.2		18-44	34.2	35.5	36.3	35.0
	45-64	22.2	28.9	27.3	22.2		45-64	27.8	27.9	24.7	22.1
	65+	52.7	43.4	27.4	22.3		65+	18.0	15.4	15.7	17.6

Note: Percentages may not add to 100 percent due to rounding.

Table 13. Rank of Florida Counties by Percent of Population Aged 17 and Younger, 2019

Rank	State and County	Aged 17 and Younger		Rank	State and County	Aged 17 and Younger	
		Percent	Number			Percent	Number
	FLORIDA	20.3	4,308,493				
1	Hendry	27.7	11,124	34	Nassau	19.9	16,946
2	Hardee	26.6	7,294	35	Gilchrist	19.8	3,521
3	Osceola	24.5	90,896	36	Taylor	19.7	4,418
4	Clay	24.3	52,350	37	Lake	19.6	70,082
5	Baker	23.8	6,719	38	Levy	19.6	8,096
6	Hillsborough	23.4	337,631	39	Bradford	19.6	5,617
7	Orange	23.1	320,623	40	Palm Beach	19.5	282,654
8	Duval	22.8	221,578	41	Jackson	19.4	9,135
9	Okeechobee	22.7	9,492	42	Manatee	19.4	75,146
10	Polk	22.5	155,228	43	Leon	19.1	56,730
11	Santa Rosa	22.2	39,833	44	Hamilton	18.6	2,719
12	Okaloosa	22.1	44,608	45	Lee	18.6	136,717
13	Gadsden	22.1	10,229	46	Gulf	18.5	2,426
14	Seminole	21.7	102,565	47	Brevard	18.5	109,949
15	Escambia	21.6	69,516	48	Flagler	18.4	20,334
16	Putnam	21.6	15,849	49	Hernando	18.4	34,584
17	Bay	21.6	36,108	50	Marion	18.3	66,057
18	Lafayette	21.6	1,829	51	Collier	18.3	68,905
19	Madison	21.5	4,203	52	Volusia	18.2	97,958
20	Wakulla	21.4	7,073	53	Dixie	17.9	2,969
21	St. Johns	21.4	54,552	54	Jefferson	17.8	2,628
22	DeSoto	21.4	7,733	55	Alachua	17.7	47,327
23	Suwannee	21.3	9,663	56	Union	17.7	2,742
24	Columbia	21.1	14,906	57	Glades	17.5	2,300
25	St. Lucie	21.1	65,205	58	Indian River	17.4	26,989
26	Broward	21.0	403,968	59	Highlands	17.3	17,867
27	Calhoun	20.8	2,923	60	Franklin	17.1	2,101
28	Miami-Dade	20.5	575,307	61	Pinellas	16.9	164,847
29	Holmes	20.4	4,087	62	Martin	15.8	25,037
30	Walton	20.4	14,280	63	Citrus	14.8	21,890
31	Pasco	20.3	106,764	64	Monroe	14.7	11,235
32	Liberty	20.1	1,767	65	Sarasota	14.7	62,729
33	Washington	20.0	5,080	66	Charlotte	13.1	23,896
				67	Sumter	8.5	10,959

Figure 3. Percent of Population Aged 17 and Younger, 2019

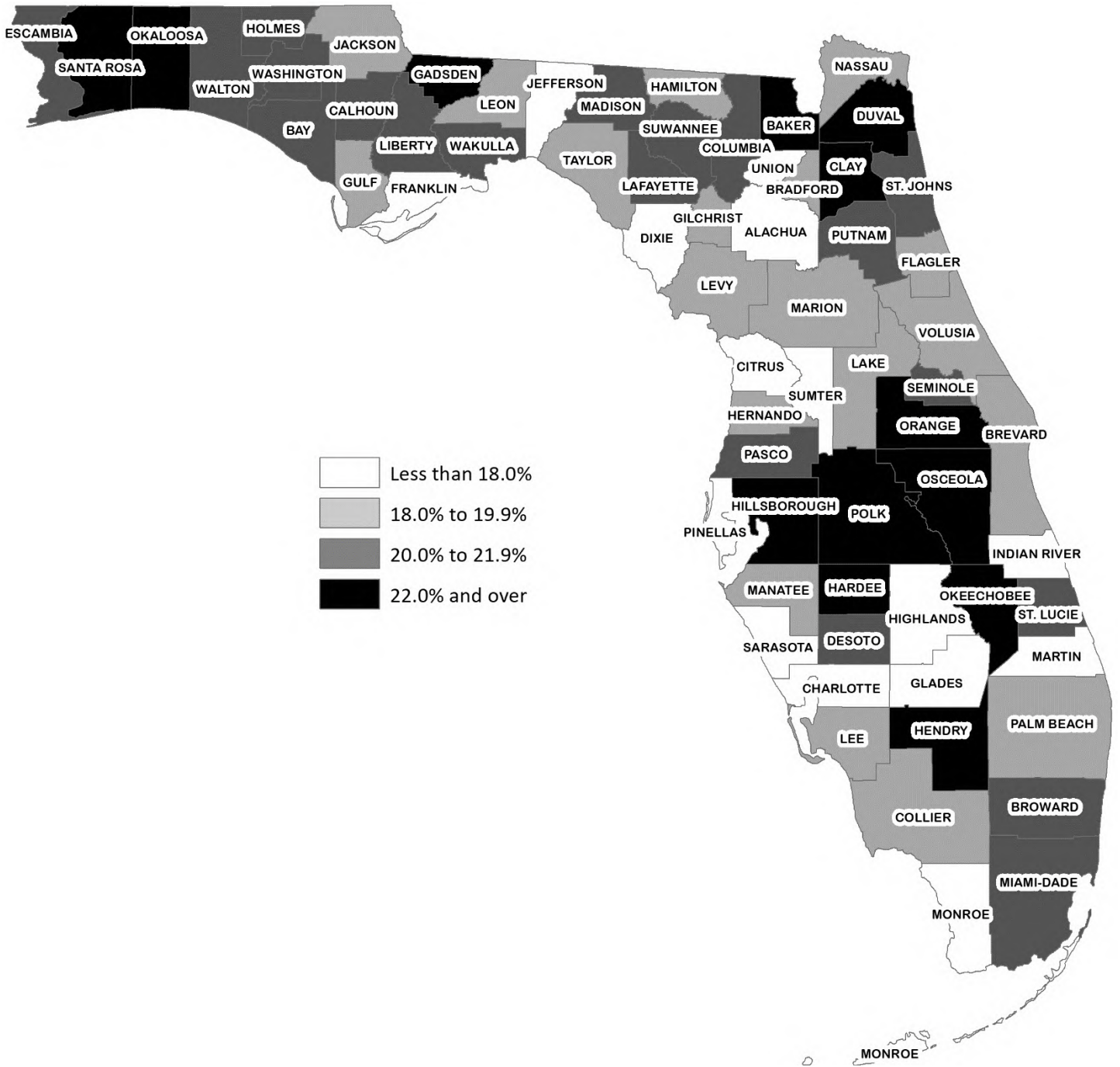


Table 14. Rank of Florida Counties by Percent of Population Aged 65 and Older, 2019

Rank	State and County	Aged 65 and Older		Rank	State and County	Aged 65 and Older	
		Percent	Number			Percent	Number
	FLORIDA	20.1	4,270,964				
1	Sumter	52.7	67,851	34	Polk	20.5	141,869
2	Charlotte	37.4	67,963	35	Madison	20.1	3,925
3	Sarasota	34.9	148,634	36	Jackson	19.8	9,313
4	Citrus	34.7	51,260	37	St. Johns	19.6	49,807
5	Highlands	34.2	35,374	38	Columbia	19.2	13,544
6	Martin	30.5	48,411	39	DeSoto	19.2	6,915
7	Indian River	30.4	47,178	40	Walton	19.1	13,403
8	Marion	29.0	104,531	41	Calhoun	19.0	2,673
9	Collier	28.7	108,134	42	Hamilton	18.8	2,740
10	Hernando	28.3	53,257	43	Okeechobee	18.7	7,819
11	Flagler	28.1	31,093	44	Bradford	18.1	5,204
12	Manatee	26.4	102,296	45	Washington	18.0	4,565
13	Lee	25.9	190,127	46	Escambia	17.8	57,180
14	Lake	25.8	92,288	47	Gadsden	17.6	8,130
15	Pinellas	25.2	246,629	48	Bay	17.4	29,080
16	Glades	24.9	3,269	49	Okaloosa	17.0	34,189
17	Gulf	24.9	3,253	50	Broward	16.9	325,100
18	Volusia	24.3	130,898	51	Miami-Dade	16.4	460,995
19	Brevard	23.7	140,648	52	Lafayette	16.1	1,362
20	Palm Beach	23.6	342,300	53	Santa Rosa	15.9	28,441
21	Levy	23.4	9,665	54	Clay	15.4	33,210
22	Dixie	23.4	3,882	55	Seminole	15.4	72,595
23	Monroe	23.3	17,740	56	Alachua	14.7	39,255
24	Pasco	23.0	121,257	57	Hardee	14.6	3,999
25	Putnam	22.3	16,325	58	Duval	14.5	141,012
26	Nassau	22.2	18,854	59	Wakulla	14.3	4,702
27	Jefferson	22.1	3,269	60	Hendry	14.0	5,621
28	Suwannee	22.0	9,990	61	Hillsborough	13.9	201,094
29	St. Lucie	21.8	67,392	62	Baker	13.8	3,906
30	Gilchrist	21.7	3,859	63	Leon	13.6	40,210
31	Taylor	21.7	4,874	64	Osceola	13.4	49,788
32	Franklin	21.6	2,647	65	Union	13.0	2,014
33	Holmes	21.0	4,205	66	Liberty	12.5	1,098
				67	Orange	12.0	166,853

Figure 4. Percent of Population Aged 65 and Older, 2019

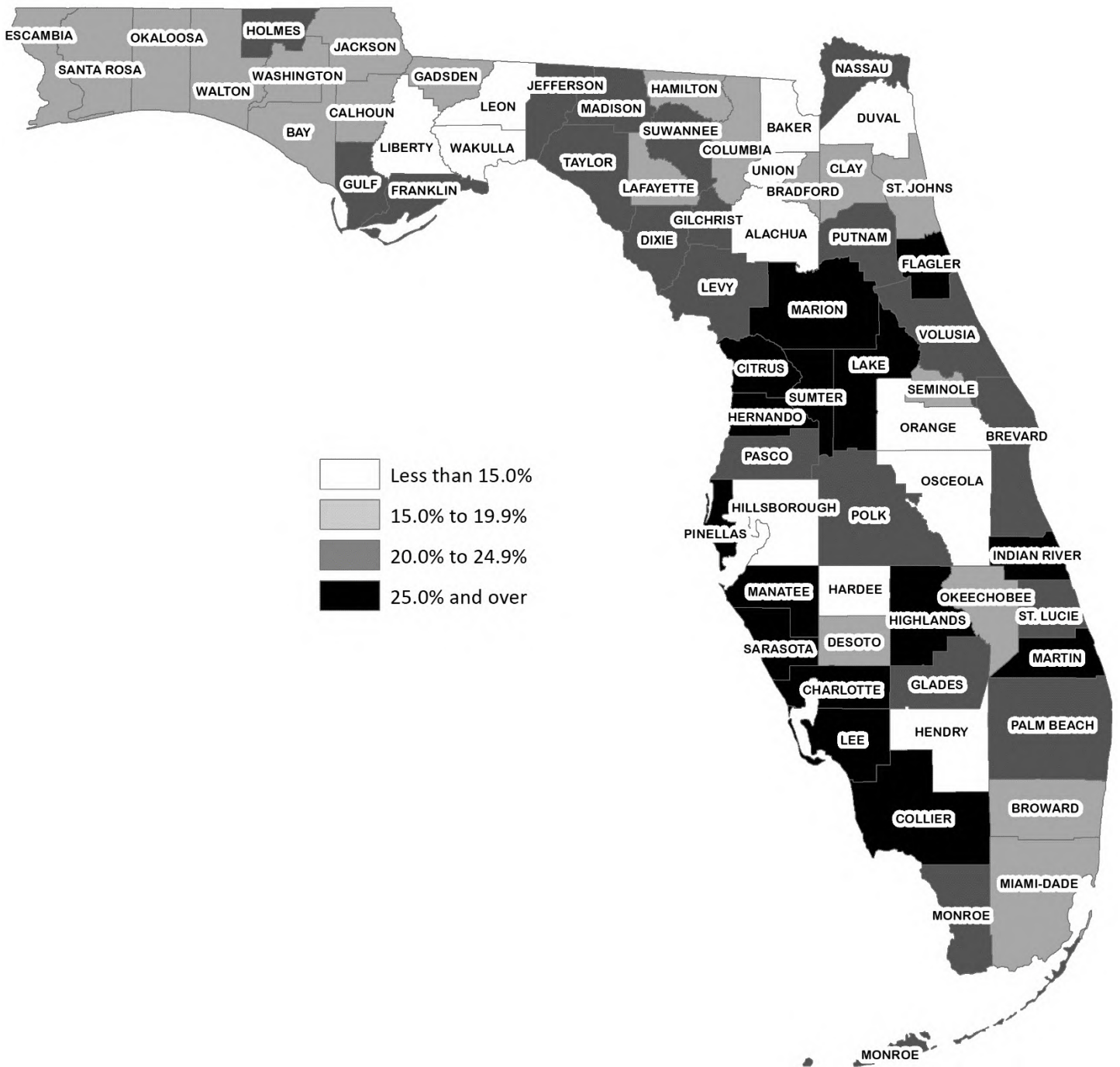


Table 15. Rank of Florida Counties by Percent of Black Population, 2019

Rank	State and County	Black Population		Rank	State and County	Black Population	
		Percent	Number			Percent	Number
	FLORIDA	17.9	3,790,677				
1	Gadsden	56.1	25,942	34	Volusia	12.8	68,917
2	Madison	38.8	7,593	35	Flagler	12.8	14,131
3	Jefferson	35.1	5,185	36	Lafayette	12.4	1,050
4	Hamilton	33.9	4,945	37	Suwannee	12.3	5,570
5	Leon	33.1	98,080	38	Brevard	12.2	72,766
6	Duval	32.6	316,867	39	Bay	12.2	20,339
7	Broward	31.1	597,482	40	Pinellas	12.0	116,988
8	Jackson	27.1	12,714	41	Lake	11.8	42,018
9	Escambia	25.2	80,801	42	Gulf	11.5	1,504
10	Orange	23.9	331,274	43	Glades	11.3	1,478
11	Union	22.8	3,537	44	Okaloosa	11.0	22,163
12	Alachua	22.0	58,939	45	Highlands	10.5	10,859
13	St. Lucie	22.0	68,204	46	Manatee	10.2	39,687
14	Bradford	20.3	5,818	47	Indian River	10.1	15,706
15	Palm Beach	20.1	291,127	48	Levy	10.0	4,113
16	Taylor	20.0	4,495	49	Lee	9.8	71,796
17	Hillsborough	19.3	278,725	50	Dixie	9.4	1,567
18	Miami-Dade	18.9	532,705	51	Okeechobee	9.1	3,822
19	Columbia	18.8	13,287	52	Collier	8.0	29,971
20	Liberty	17.6	1,542	53	Sumter	7.9	10,175
21	Polk	16.7	115,658	54	Hardee	7.8	2,143
22	Putnam	16.5	12,114	55	Charlotte	7.1	12,815
23	Washington	15.4	3,903	56	Monroe	6.8	5,211
24	Baker	15.3	4,315	57	Santa Rosa	6.7	12,074
25	Osceola	14.7	54,543	58	Nassau	6.6	5,587
26	Wakulla	14.5	4,774	59	Pasco	6.5	34,442
27	Seminole	13.9	65,442	60	Hernando	6.4	12,076
28	Marion	13.7	49,401	61	St. Johns	6.4	16,207
29	Calhoun	13.3	1,874	62	Holmes	6.2	1,237
30	Franklin	13.3	1,628	63	Martin	6.1	9,604
31	DeSoto	13.1	4,711	64	Walton	5.9	4,113
32	Hendry	12.9	5,186	65	Sarasota	5.6	23,919
33	Clay	12.8	27,538	66	Gilchrist	5.1	904
				67	Citrus	3.6	5,376

Figure 5. Black Population as Percent of Total Population, 2019

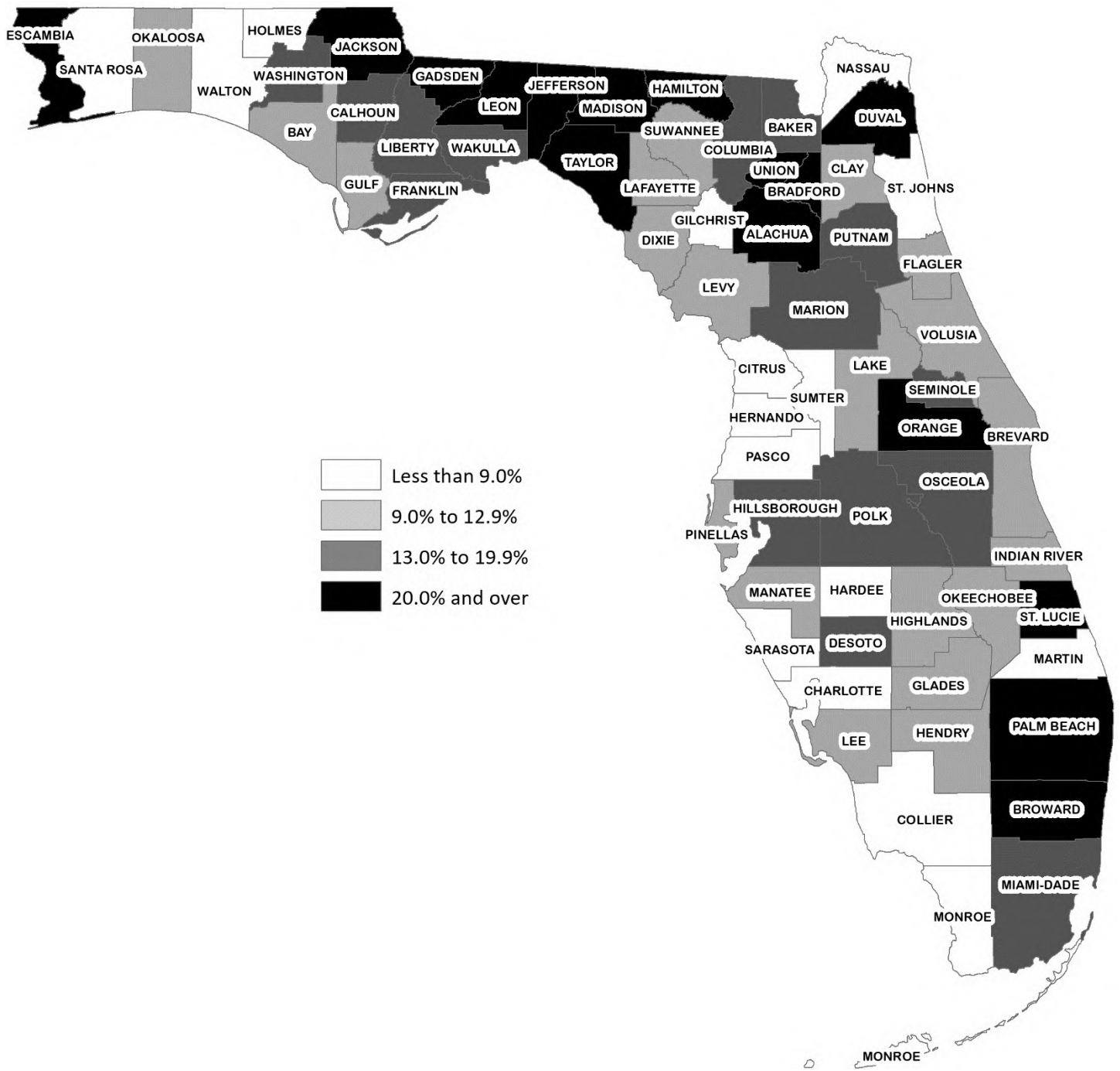


Table 16. Rank of Florida Counties by Percent of Hispanic Population, 2019

Rank	State and County	Hispanic Population		Rank	State and County	Hispanic Population	
		Percent	Number			Percent	Number
	FLORIDA	26.4	5,606,726				
1	Miami-Dade	68.5	1,926,930	34	Sarasota	10.3	43,907
2	Hendry	55.9	22,425	35	Pinellas	10.2	100,131
3	Osceola	54.4	201,527	36	Clay	10.1	21,717
4	Hardee	44.8	12,266	37	Hamilton	10.0	1,460
5	DeSoto	33.8	12,196	38	Okaloosa	9.9	20,025
6	Orange	32.9	456,603	39	Alachua	9.9	26,515
7	Broward	30.2	579,042	40	Levy	9.2	3,802
8	Hillsborough	29.8	430,341	41	Charlotte	7.9	14,292
9	Collier	29.6	111,491	42	St. Johns	7.4	18,781
10	Okeechobee	26.9	11,226	43	Walton	7.3	5,082
11	Glades	25.3	3,316	44	Gilchrist	7.1	1,264
12	Monroe	24.3	18,555	45	Bay	7.0	11,673
13	Polk	23.6	163,173	46	Liberty	7.0	610
14	Lee	23.3	171,106	47	Escambia	6.9	22,022
15	Palm Beach	22.9	332,071	48	Leon	6.5	19,225
16	Seminole	21.9	103,112	49	Columbia	6.2	4,361
17	Highlands	20.8	21,465	50	Sumter	5.9	7,546
18	St. Lucie	19.9	61,427	51	Citrus	5.8	8,607
19	Manatee	18.5	71,775	52	Madison	5.8	1,133
20	Lake	15.9	56,886	53	Franklin	5.8	709
21	Pasco	15.3	80,617	54	Calhoun	5.8	811
22	Martin	15.2	24,164	55	Santa Rosa	5.6	10,080
23	Lafayette	14.6	1,235	56	Jackson	5.2	2,424
24	Volusia	14.3	76,964	57	Union	5.1	788
25	Hernando	14.2	26,733	58	Jefferson	4.8	702
26	Marion	14.0	50,357	59	Nassau	4.6	3,923
27	Indian River	13.7	21,189	60	Bradford	4.1	1,170
28	Duval	11.1	107,492	61	Wakulla	4.1	1,344
29	Suwannee	11.1	5,022	62	Taylor	3.9	883
30	Putnam	10.9	7,983	63	Dixie	3.9	647
31	Brevard	10.7	63,521	64	Washington	3.2	815
32	Flagler	10.5	11,641	65	Gulf	3.2	416
33	Gadsden	10.3	4,774	66	Baker	2.6	723
				67	Holmes	2.6	513

Figure 6. Hispanic Population as Percent of Total Population, 2019

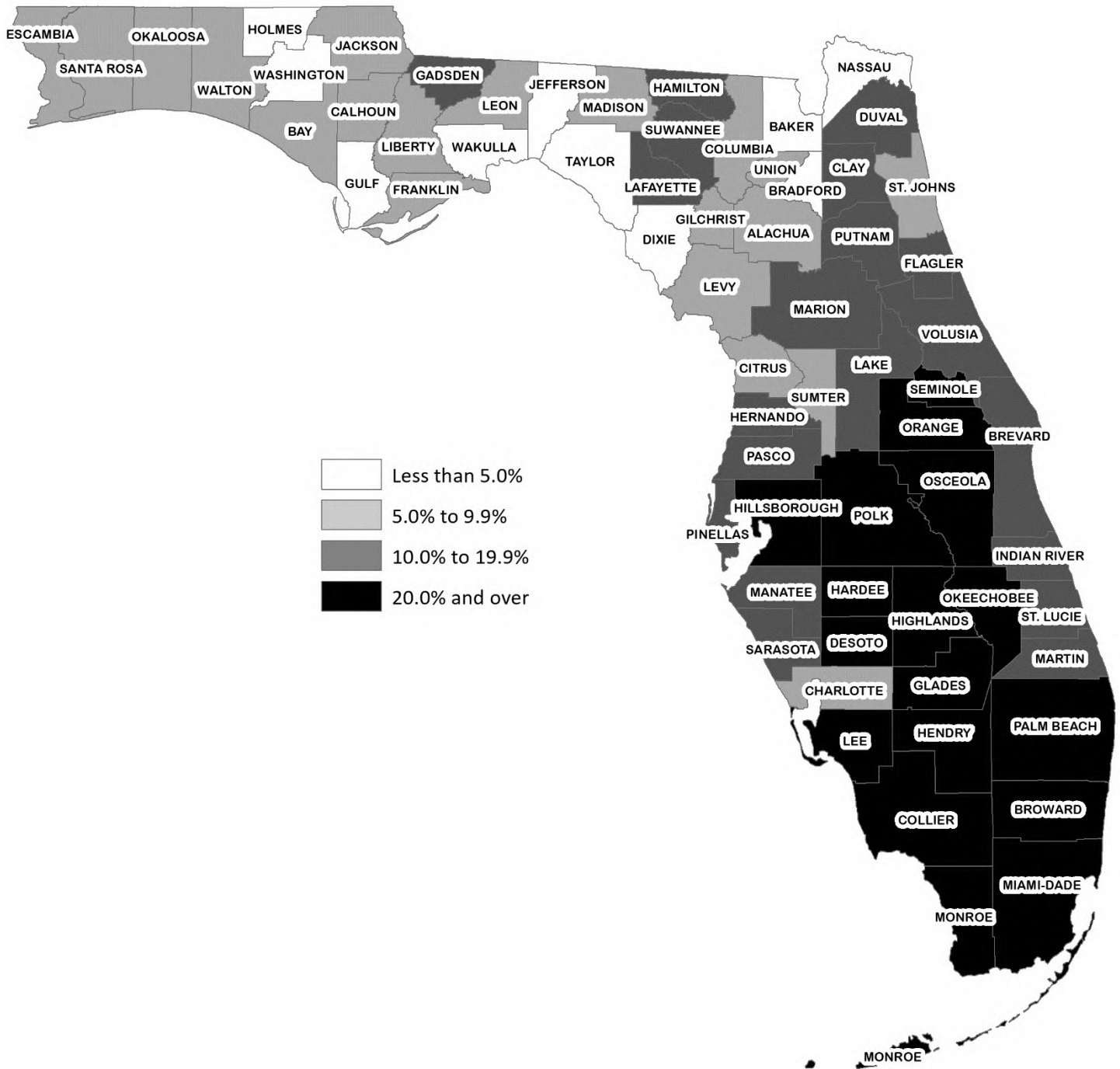


Table 17. Population Per Square Mile for Florida Counties, 2000 to 2020

State and County	Land Area in 2010 (sq. miles)	Population Per Square Mile			County Ranking		
		2020	2010	2000	2020	2010	2000
FLORIDA*	53,625	403	351	298	(X)	(X)	(X)
Pinellas	274	3,591	3,345	3,363	1	1	1
Broward	1,210	1,597	1,445	1,341	2	2	2
Orange	903	1,567	1,269	993	3	5	6
Seminole	309	1,543	1,368	1,182	4	3	4
Miami-Dade*	1,898	1,493	1,315	1,187	5	4	3
Hillsborough	1,020	1,450	1,205	979	6	6	7
Duval	762	1,289	1,134	1,022	7	7	5
Lee	785	956	788	562	8	8	10
Sarasota	556	789	682	586	9	9	8
Palm Beach	1,970	744	670	574	10	10	9
Pasco	747	726	622	462	11	11	12
Brevard	1,016	597	535	469	12	12	11
St. Lucie	572	563	486	337	13	13	17
Manatee	743	536	434	355	14	16	16
Volusia	1,101	501	449	403	15	15	14
Escambia	656	493	454	449	16	14	13
Leon	667	449	413	359	17	17	15
St. Johns	601	436	316	205	18	21	26
Hernando	473	406	365	277	19	18	18
Polk	1,798	398	335	269	20	19	19
Lake*	938	391	317	224	21	20	24
Clay	604	364	316	233	22	22	22
Indian River	503	316	274	225	23	24	23
Alachua	875	310	283	249	24	23	20
Martin	543	297	269	233	25	25	21
Osceola	1,327	292	202	130	26	30	31
Charlotte	680	276	235	208	27	27	25
Sumter	547	259	171	98	28	33	35
Citrus	582	257	243	203	29	26	27
Flagler	485	235	197	103	30	31	34
Marion*	1,585	232	209	163	31	29	30
Bay	758	230	223	196	32	28	28
Okaloosa	930	219	194	183	33	32	29
Collier	1,998	194	161	126	34	34	32
Santa Rosa	1,012	182	150	116	35	35	33

Table 17. Population Per Square Mile for Florida Counties, 2000 to 2020

(Continued)

State and County	Land Area in 2010 (sq. miles)	Population Per Square Mile			County Ranking		
		2020	2010	2000	2020	2010	2000
Nassau	649	138	113	89	36	36	37
Highlands	1,017	103	97	86	37	38	40
Putnam	728	101	102	97	38	37	36
Bradford	294	98	97	89	39	39	38
Gadsden	516	90	90	87	40	40	39
Columbia	798	88	85	71	41	41	42
Monroe	983	79	74	81	42	42	41
Walton	1,038	72	53	39	43	47	50
Suwannee	689	66	60	51	44	44	45
Union	244	63	64	55	45	43	43
DeSoto	637	58	55	51	46	45	46
Wakulla	606	56	51	38	47	49	53
Okeechobee	769	55	52	47	48	48	47
Gilchrist	350	52	48	41	49	50	49
Jackson	918	51	54	51	50	46	44
Baker	585	49	46	38	51	51	52
Washington	583	43	43	36	52	53	54
Hardee	638	43	43	42	53	52	48
Holmes	479	42	42	39	54	54	51
Levy	1,118	37	36	31	55	55	56
Hendry	1,153	36	34	31	56	56	55
Hamilton	514	28	29	26	57	57	58
Madison	696	27	28	27	58	59	57
Gulf	564	26	28	26	59	58	59
Calhoun	567	26	26	23	60	60	60
Jefferson	598	24	25	22	61	61	61
Dixie	705	24	23	20	62	62	62
Franklin	535	22	22	18	63	64	64
Taylor	1,043	22	22	18	64	63	63
Glades	806	17	16	13	65	66	65
Lafayette	543	16	16	13	66	65	66
Liberty	836	10	10	8	67	67	67

* Includes US Census Bureau corrections as of February 11, 2014.

Figure 7. Population Per Square Mile, 2020

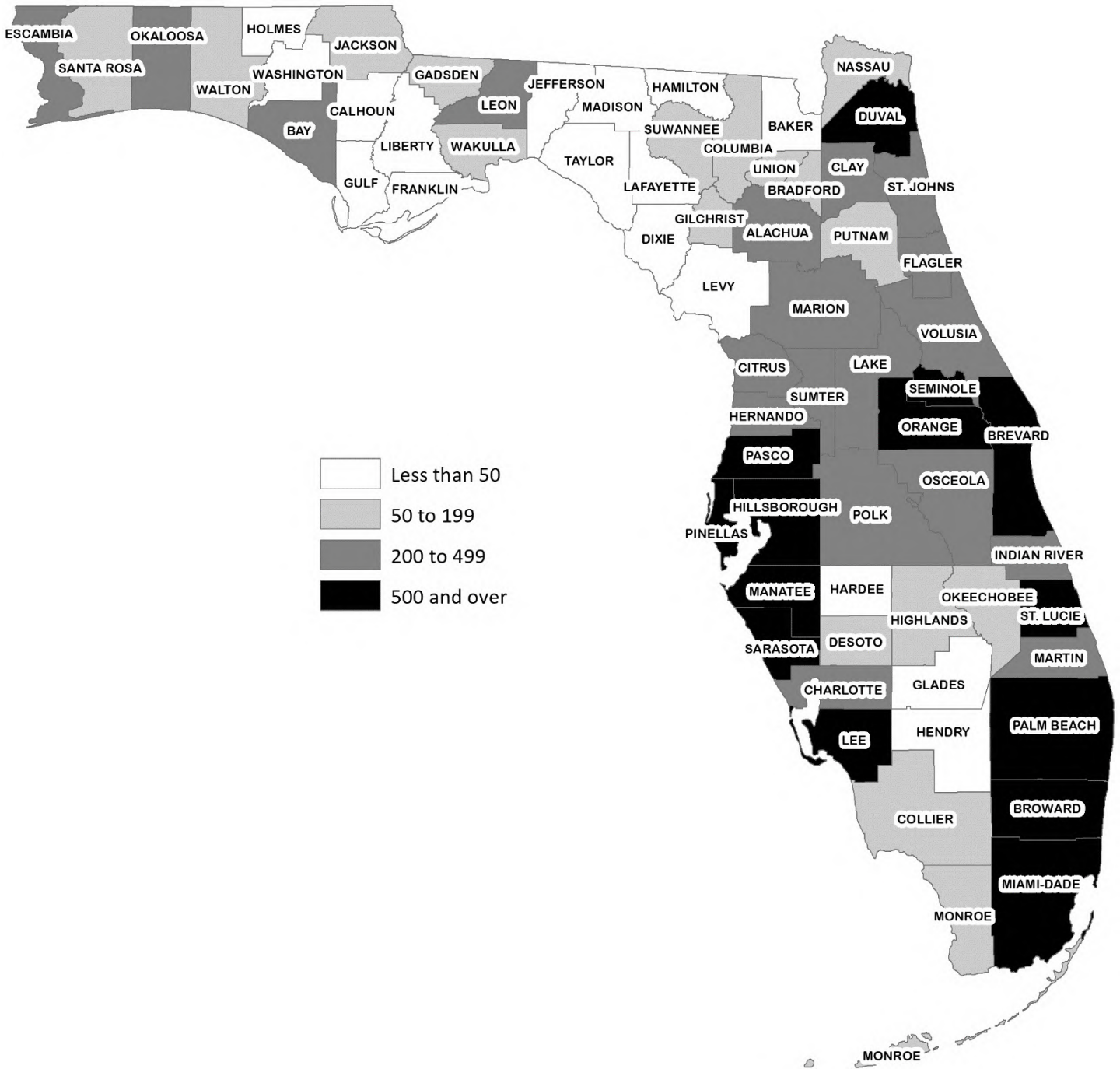


Table 18. Location of Florida Cities

City	County	City	County
Alachua	Alachua	Bunnell	Flagler
Alford	Jackson	Bushnell	Sumter
Altamonte Springs	Seminole	Callahan	Nassau
Altha	Calhoun	Callaway	Bay
Anna Maria	Manatee	Campbellton	Jackson
Apalachicola	Franklin	Cape Canaveral	Brevard
Apopka	Orange	Cape Coral	Lee
Arcadia	DeSoto	Carrabelle	Franklin
Archer	Alachua	Caryville	Washington
Astatula	Lake	Casselberry	Seminole
Atlantic Beach	Duval	Cedar Key	Levy
Atlantis	Palm Beach	Center Hill	Sumter
Auburndale	Polk	Century	Escambia
Aventura	Miami-Dade	Chattahoochee	Gadsden
Avon Park	Highlands	Chiefland	Levy
Bal Harbour	Miami-Dade	ChIPLEY	Washington
Baldwin	Duval	Cinco Bayou	Okaloosa
Bartow	Polk	Clearwater	Pinellas
Bascom	Jackson	Clermont	Lake
Bay Harbor Islands	Miami-Dade	Clewiston	Hendry
Bay Lake	Orange	Cloud Lake	Palm Beach
Bell	Gilchrist	Cocoa	Brevard
Belle Glade	Palm Beach	Cocoa Beach	Brevard
Belle Isle	Orange	Coconut Creek	Broward
Belleair	Pinellas	Coleman	Sumter
Belleair Beach	Pinellas	Cooper City	Broward
Belleair Bluffs	Pinellas	Coral Gables	Miami-Dade
Belleair Shore	Pinellas	Coral Springs	Broward
Belleview	Marion	Cottondale	Jackson
Beverly Beach	Flagler	Crescent City	Putnam
Biscayne Park	Miami-Dade	Crestview	Okaloosa
Blountstown	Calhoun	Cross City	Dixie
Boca Raton	Palm Beach	Crystal River	Citrus
Bonifay	Holmes	Cutler Bay	Miami-Dade
Bonita Springs	Lee	Dade City	Pasco
Bowling Green	Hardee	Dania Beach	Broward
Boynton Beach	Palm Beach	Davenport	Polk
Bradenton	Manatee	Davie	Broward
Bradenton Beach	Manatee	Daytona Beach	Volusia
Branford	Suwannee	Daytona Beach Shores	Volusia
Briny Breezes	Palm Beach	DeBary	Volusia
Bristol	Liberty	Deerfield Beach	Broward
Bronson	Levy	DeFuniak Springs	Walton
Brooker	Bradford	DeLand	Volusia
Brooksville	Hernando	Delray Beach	Palm Beach

Table 18. Location of Florida Cities

(Continued)

City	County	City	County
Deltona	Volusia	Groveland	Lake
Destin	Okaloosa	Gulf Breeze	Santa Rosa
Doral	Miami-Dade	Gulf Stream	Palm Beach
Dundee	Polk	Gulfport	Pinellas
Dunedin	Pinellas	Haines City	Polk
Dunnellon	Marion	Hallandale Beach	Broward
Eagle Lake	Polk	Hampton	Bradford
Eatonville	Orange	Hastings**	St. Johns
Ebro	Washington	Havana	Gadsden
Edgewater	Volusia	Haverhill	Palm Beach
Edgewood	Orange	Hawthorne	Alachua
El Portal	Miami-Dade	Hialeah	Miami-Dade
Estero*	Lee	Hialeah Gardens	Miami-Dade
Esto	Holmes	High Springs	Alachua
Eustis	Lake	Highland Beach	Palm Beach
Everglades	Collier	Highland Park	Polk
Fanning Springs	Gilchrist/Levy	Hillcrest Heights	Polk
Fellsmere	Indian River	Hilliard	Nassau
Fernandina Beach	Nassau	Hillsboro Beach	Broward
Flagler Beach	Flagler/Volusia	Holly Hill	Volusia
Florida City	Miami-Dade	Hollywood	Broward
Fort Lauderdale	Broward	Holmes Beach	Manatee
Fort Meade	Polk	Homestead	Miami-Dade
Fort Myers	Lee	Horseshoe Beach	Dixie
Fort Myers Beach	Lee	Howey-in-the-Hills	Lake
Fort Pierce	St. Lucie	Hypoluxo	Palm Beach
Fort Walton Beach	Okaloosa	Indialantic	Brevard
Fort White	Columbia	Indian Creek	Miami-Dade
Freeport	Walton	Indian Harbour Beach	Brevard
Frostproof	Polk	Indian River Shores	Indian River
Fruitland Park	Lake	Indian Rocks Beach	Pinellas
Gainesville	Alachua	Indian Shores	Pinellas
Glen Ridge	Palm Beach	Indiantown***	Martin
Glen St. Mary	Baker	Inglis	Levy
Golden Beach	Miami-Dade	Interlachen	Putnam
Golf	Palm Beach	Inverness	Citrus
Graceville	Jackson	Islamorada, Village of Islands	Monroe
Grand Ridge	Jackson	Islandia****	Miami-Dade
Grant-Valkaria	Brevard	Jacksonville	Duval
Green Cove Springs	Clay	Jacksonville Beach	Duval
Greenacres	Palm Beach	Jacob City	Jackson
Greensboro	Gadsden	Jasper	Hamilton
Greenville	Madison	Jay	Santa Rosa
Greenwood	Jackson	Jennings	Hamilton
Gretna	Gadsden	Juno Beach	Palm Beach

Table 18. Location of Florida Cities

(Continued)

City	County	City	County
Jupiter	Palm Beach	Maitland	Orange
Jupiter Inlet Colony	Palm Beach	Malabar	Brevard
Jupiter Island	Martin	Malone	Jackson
Kenneth City	Pinellas	Manalapan	Palm Beach
Key Biscayne	Miami-Dade	Mangonia Park	Palm Beach
Key Colony Beach	Monroe	Marathon	Monroe
Key West	Monroe	Marco Island	Collier
Keystone Heights	Clay	Margate	Broward
Kissimmee	Osceola	Marianna	Jackson
La Crosse	Alachua	Marineland	Flagler/St. Johns
LaBelle	Hendry	Mary Esther	Okaloosa
Lady Lake	Lake	Mascotte	Lake
Lake Alfred	Polk	Mayo	Lafayette
Lake Buena Vista	Orange	McIntosh	Marion
Lake Butler	Union	Medley	Miami-Dade
Lake City	Columbia	Melbourne	Brevard
Lake Clarke Shores	Palm Beach	Melbourne Beach	Brevard
Lake Hamilton	Polk	Melbourne Village	Brevard
Lake Helen	Volusia	Mexico Beach	Bay
Lakeland	Polk	Miami	Miami-Dade
Lake Mary	Seminole	Miami Beach	Miami-Dade
Lake Park	Palm Beach	Miami Gardens	Miami-Dade
Lake Placid	Highlands	Miami Lakes	Miami-Dade
Lake Wales	Polk	Miami Shores	Miami-Dade
Lake Worth	Palm Beach	Miami Springs	Miami-Dade
Lantana	Palm Beach	Micanopy	Alachua
Largo	Pinellas	Midway	Gadsden
Lauderdale-By-The-Sea	Broward	Milton	Santa Rosa
Lauderdale Lakes	Broward	Minneola	Lake
Lauderhill	Broward	Miramar	Broward
Laurel Hill	Okaloosa	Monticello	Jefferson
Lawtey	Bradford	Montverde	Lake
Layton	Monroe	Moore Haven	Glades
Lazy Lake	Broward	Mount Dora	Lake
Lee	Madison	Mulberry	Polk
Leesburg	Lake	Naples	Collier
Lighthouse Point	Broward	Neptune Beach	Duval
Live Oak	Suwannee	New Port Richey	Pasco
Longboat Key	Manatee/Sarasota	New Smyrna Beach	Volusia
Longwood	Seminole	Newberry	Alachua
Loxahatchee Groves	Palm Beach	Niceville	Okaloosa
Lynn Haven	Bay	Noma	Holmes
Macclenny	Baker	North Bay Village	Miami-Dade
Madeira Beach	Pinellas	North Lauderdale	Broward
Madison	Madison	North Miami	Miami-Dade

Table 18. Location of Florida Cities

(Continued)

City	County	City	County
North Miami Beach	Miami-Dade	Plant City	Hillsborough
North Palm Beach	Palm Beach	Plantation	Broward
North Port	Sarasota	Polk City	Polk
North Redington Beach	Pinellas	Pomona Park	Putnam
Oak Hill	Volusia	Pompano Beach	Broward
Oakland	Orange	Ponce de Leon	Holmes
Oakland Park	Broward	Ponce Inlet	Volusia
Ocala	Marion	Port Orange	Volusia
Ocean Breeze	Martin	Port Richey	Pasco
Ocean Ridge	Palm Beach	Port St. Joe	Gulf
Ocoee	Orange	Port St. Lucie	St. Lucie
Okeechobee	Okeechobee	Punta Gorda	Charlotte
Oldsmar	Pinellas	Quincy	Gadsden
Opa-locka	Miami-Dade	Raiford	Union
Orange City	Volusia	Reddick	Marion
Orange Park	Clay	Redington Beach	Pinellas
Orchid	Indian River	Redington Shores	Pinellas
Orlando	Orange	Riviera Beach	Palm Beach
Ormond Beach	Volusia	Rockledge	Brevard
Otter Creek	Levy	Royal Palm Beach	Palm Beach
Oviedo	Seminole	Safety Harbor	Pinellas
Pahokee	Palm Beach	St. Augustine	St. Johns
Palatka	Putnam	St. Augustine Beach	St. Johns
Palm Bay	Brevard	St. Cloud	Osceola
Palm Beach	Palm Beach	St. Leo	Pasco
Palm Beach Gardens	Palm Beach	St. Lucie Village	St. Lucie
Palm Beach Shores	Palm Beach	St. Marks	Wakulla
Palm Coast	Flagler	St. Pete Beach	Pinellas
Palm Shores	Brevard	St. Petersburg	Pinellas
Palm Springs	Palm Beach	San Antonio	Pasco
Palmetto	Manatee	Sanford	Seminole
Palmetto Bay	Miami-Dade	Sanibel	Lee
Panama City	Bay	Sarasota	Sarasota
Panama City Beach	Bay	Satellite Beach	Brevard
Parker	Bay	Sea Ranch Lakes	Broward
Parkland	Broward	Sebastian	Indian River
Paxton	Walton	Sebring	Highlands
Pembroke Park	Broward	Seminole	Pinellas
Pembroke Pines	Broward	Sewall's Point	Martin
Penney Farms	Clay	Shalimar	Okaloosa
Pensacola	Escambia	Sneads	Jackson
Perry	Taylor	Sopchoppy	Wakulla
Pierson	Volusia	South Bay	Palm Beach
Pinecrest	Miami-Dade	South Daytona	Volusia
Pinellas Park	Pinellas	South Miami	Miami-Dade

Table 18. Location of Florida Cities

(Continued)

City	County	City	County
South Palm Beach	Palm Beach	Weeki Wachee*****	Hernando
South Pasadena	Pinellas	Welaka	Putnam
Southwest Ranches	Broward	Wellington	Palm Beach
Springfield	Bay	Westlake*****	Palm Beach
Starke	Bradford	West Melbourne	Brevard
Stuart	Martin	West Miami	Miami-Dade
Sunny Isles Beach	Miami-Dade	West Palm Beach	Palm Beach
Sunrise	Broward	Weston	Broward
Surfside	Miami-Dade	West Park	Broward
Sweetwater	Miami-Dade	Westville	Holmes
Tallahassee	Leon	Wewahitchka	Gulf
Tamarac	Broward	White Springs	Hamilton
Tampa	Hillsborough	Wildwood	Sumter
Tarpon Springs	Pinellas	Williston	Levy
Tavares	Lake	Wilton Manors	Broward
Temple Terrace	Hillsborough	Windermere	Orange
Tequesta	Palm Beach	Winter Garden	Orange
Titusville	Brevard	Winter Haven	Polk
Treasure Island	Pinellas	Winter Park	Orange
Trenton	Gilchrist	Winter Springs	Seminole
Umatilla	Lake	Worthington Springs	Union
Valparaiso	Okaloosa	Yankeetown	Levy
Venice	Sarasota	Zephyrhills	Pasco
Vernon	Washington	Zolfo Springs	Hardee
Vero Beach	Indian River		
Virginia Gardens	Miami-Dade		
Waldo	Alachua		
Wauchula	Hardee		
Wausau	Washington		
Webster	Sumter		

* The Village of Estero was incorporated on December 31, 2014.

** The City of Hastings was disincorporated on February 28, 2018.

*** The Village of Indiantown was incorporated on December 31, 2017.

**** The City of Islandia was disincorporated on March 6, 2012.

***** The City of Weeki Wachee was disincorporated on June 9, 2020.

***** The City of Westlake was incorporated on June 20, 2016.

UF | **Bureau of Economic and Business Research**
College of Liberal Arts and Sciences
UNIVERSITY of FLORIDA

Ayers Technological Plaza
720 SW 2nd Ave, Suite 150
P.O. Box 117148
Gainesville, Florida 32611-7148
phone: 352-392-0171
www.bebr.ufl.edu

BEBR