



# **FLORIDA COMMUNITIES TRUST ANNUAL REPORT FISCAL YEAR 2020-21**

**OCT. 1, 2021**



# FCT Planner Assignments



# TABLE OF CONTENTS

LETTER FROM THE CHAIR..... 1

PROJECT LOCATION MAP ..... 2

ABOUT THE FLORIDA COMMUNITIES TRUST ..... 3

PARKS AND OPEN SPACE FLORIDA FOREVER GRANT PROGRAM ..... 6

    SUSTAINABLE INITIATIVES ..... 7

    COMMUNITY GARDENING ..... 8

    VIRTUAL EDUCATION ..... 9

    UNIQUE ABILITIES ..... 10

FISCAL YEAR 2020-21 PARKS AND OPEN SPACE GRANT APPLICATION CYCLE ..... 11

FLORIDA COMMUNITIES TRUST POST-COMPLETION WEBINAR ..... 12

FISCAL YEAR 2019-20 STAN MAYFIELD WORKING WATERFRONTS FLORIDA FOREVER  
GRANT PROGRAM ..... 13

SITE VISITS ..... 14

CLOSINGS AND REIMBURSEMENTS ..... 17

ACQUIRED PROJECTS BY COUNTY 1991-2021 ..... 21

SUMMARY OF FINANCIAL ACTIVITIES..... 29

FLORIDA COMMUNITIES TRUST GOVERNING BOARD ..... 30

*Front Cover: Gordon River Greenway Park, Collier County, FCT# 06-043-FF6*  
*Back Cover: Little Orange Creek, City of Hawthorne, FCT# 08-085-FF8*



# FLORIDA DEPARTMENT OF Environmental Protection

Marjory Stoneman Douglas Building  
3900 Commonwealth Boulevard  
Tallahassee, FL 32399

**Ron DeSantis**  
Governor

**Jeanette Nuñez**  
Lt. Governor

**Shawn Hamilton**  
Secretary

Oct. 1, 2021

Florida Communities Trust  
Letter from the Chair

Dear Floridians,

For nearly 30 years, the Florida Communities Trust (FCT) has established a rich legacy of partnership and preservation marked by a diverse array of parks, greenways, urban green spaces, public beach access points, wildlife habitats and working waterfronts. As perpetual stewards of over 500 project sites throughout Florida, FCT works to continually enhance local communities and recreational access for Floridians.

Over the past year, FCT has continued to assist local stakeholders with acquisitions and land management efforts to safeguard Florida's fragile ecosystems, conserve natural resources, and foster multi-use passive recreation activities such as hiking, wildlife viewing, nature study and equestrian trail riding for surrounding communities.

FCT complements many grant programs administered by the Florida Department of Environmental Protection, including the Florida Recreation Development Assistance Program, Land and Water Conservation Fund Program and Recreational Trails Program. These grant programs help local communities leverage their resources and build interconnected community parks, trails and preserves to better serve visitors and Floridians.

We are pleased to submit this report, which provides information on how FCT continues to strengthen our communities.

Sincerely,

A handwritten signature in blue ink that reads "Callie DeHaven".

Callie DeHaven  
Chair, Florida Communities Trust Governing Board

# FLORIDA COMMUNITIES TRUST 1990 – 2021 PROJECT LOCATION MAP





# ABOUT THE FLORIDA COMMUNITIES TRUST



*Blackburn Point Park Addition (06-004-FF6)  
Sarasota County*

The Florida Communities Trust (FCT), created by Chapter 380, Florida Statutes (F.S.), is a state-funded land acquisition program housed within the Florida Department of Environmental Protection's (DEP) Division of State Lands. The grant programs administered by FCT were initially funded through bonds issued under Preservation 2000, and later through the Florida Forever Act (see Sections 259.101 and 259.105, F.S.). FCT assists communities in protecting natural resources, providing recreational opportunities and preserving Florida's traditional working waterfronts through the competitive criteria outlined in the Parks and Open Space and the Stan Mayfield Working Waterfronts Florida Forever Grant Programs. These programs provide funding to local

governments and eligible nonprofit organizations to acquire land for parks, open space, greenways and projects supporting Florida's seafood harvesting and aquaculture industries. FCT is funded through proceeds from Florida Forever. Partial and full grants for land acquisition projects are provided to communities through a competitive application cycle.

FCT is governed by a five-member board with the Secretary of DEP or his designee serving as chair. Also serving are four members of the public appointed by the Governor which shall include a former elected official of a metropolitan municipal government, a former elected official of a county government, a representative of a nonprofit organization that has among its principal goals the conservation of natural resources or protection of the environment, and a representative of the development industry.

The FCT Annual Report is prepared in accordance with Section 380.512, F.S., which identifies the report requirements. This annual report is a summary of the program activities for FY 2020-21 and includes a financial overview, administrative operations and accomplishments of the programs. Through the Parks and Open Space and Stan Mayfield Working Waterfronts Florida Forever Grant Programs, FCT helps Florida communities create local recreational opportunities, ensure public access to our beautiful beaches, protect our historical and cultural resources, preserve Florida's commercial fishing heritage and traditional working waterfronts, and provide clean air and drinking water essential to creating livable communities ensuring that Florida continues to be a great place to live, work and visit.



*Howell Branch Preserve (04-051-FF4)  
City of Winter Park*

## SUPPORTING THE MISSION OF THE DEPARTMENT

FCT serves as an essential component of DEP's mission to protect, conserve and manage the state's natural resources and enforce its environmental laws. The cornerstone of Florida's growth management law is the local government comprehensive plan, which serves as a blueprint for successfully managing growth. FCT helps local governments implement their comprehensive plans through the acquisition of land, utilizing funds from the Florida Forever program. FCT is non-regulatory and promotes innovative

solutions to the challenges inherent in the comprehensive planning process. FCT supports DEP's values by serving as an example of how to protect natural resources, provide outdoor recreation and economic vitality while adhering to the integrity of this shared vision.

## FLORIDA FOREVER FUNDING

Florida Forever is an environmental land acquisition program that encompasses a wide range of goals, including restoration of damaged environmental systems, implementation of local comprehensive plans, increased public access, and public lands management and maintenance. Acquisitions in this program provide a host of ecosystem benefits including water quality, habitat and species protection, and outdoor recreation. Through cooperative partnerships, Florida Forever continues to serve as the state's blueprint for conserving natural resources.



*Island City Park Preserve (01-076-FF1)  
Broward County and City of Wilton Manors*

Under Florida Forever, FCT awards grants to local governments and nonprofit environmental organizations through a competitive application cycle to help acquire parks, greenways and open space land to further local comprehensive plans. FCT staff provides technical assistance in numerous areas, including application development, functional support for management plans and project liaisons with state and federal entities. Additionally, FCT serves as a partner in the negotiation and acquisition process during purchases.

The Parks and Open Space Florida Forever Grant Program requires local governments to provide a minimum 25% match, except for small local governments. FCT awards 100% grants to small local governments, which are defined as municipalities with a population less than 10,000 and counties with a population less than 75,000. The Stan Mayfield Working Waterfronts Florida Forever Grant Program does not require a match but does award extra points to an application if a 25% or more match is provided. Nonprofit environmental organizations are not required to provide matching funds.



*Clifton S. Perry Beach (08-047-FF8)  
Martin County*

## THE YEAR IN REVIEW

During FY 2020-21, funding for FCT's grant program came exclusively from the Florida Forever program. FCT continues to ensure that matching requirements are met throughout the selection, evaluation and closing processes.

FCT received \$10 million of Florida Forever funding for FY 2020-21. These projects will be approved by the FCT Board in the latter part of 2021.

## RESULTS

FCT is highly successful in administering the project selection and grant-awarding components of its programs. One of the rewarding aspects of FCT is that it is the only state-funded program currently available for local recreation, conservation and working waterfront land acquisitions. This distinction allows for a rare partnership with local communities and businesses which works to protect natural resources and promote economic growth. Subsequently, community stakeholders further their investments in local communities to safeguard Florida's natural resources and enhance its ecosystems. Each grant recipient becomes responsible for land stewardship and full implementation of a formal management plan that has been approved by FCT. This has resulted in the improved quality of natural resources through long-term planning, restoration and maintenance.

FCT staff continuously works to focus taxpayer resources on projects that provide a direct benefit to the environment and local communities. FCT creates a one-of-a-kind opportunity for stakeholders to leverage local dollars with state dollars, optimizing conservation benefits. With DEP's Division of State Lands, FCT staff looks forward to continuing this legacy under Florida Forever.

## LOOKING TO THE FUTURE



*Apalachicola Riverfront Park (08-078-FF8)  
City of Apalachicola*

Under the leadership of Governor Ron DeSantis, a commitment in funding towards Florida's prized properties and waterbodies will ensure additional protections for its unique natural resources. The coming year presents an exciting opportunity as FCT proceeds with a Stan Mayfield Working Workfront Florida Forever Grant Program application cycle. FCT staff is committed to continued collaboration through partnerships with local stakeholders.

Moving into the coming year, FCT staff and Governing Board will strive to enhance relationships with local communities, develop new partnerships and thereby increase our ability to preserve lands for Florida's future generations. Through these efforts, we will continue to encourage wise land management practices and assure all community responsibilities are met at each FCT-funded project site helping to preserve more land for Florida's future parks, open spaces and working waterfronts.



# PARKS AND OPEN SPACE FLORIDA FOREVER GRANT PROGRAM

The Parks and Open Space Florida Forever Grant Program assists communities in meeting the challenges of growth, supporting viable community development and protecting natural resources and open space. The program is administered under Chapters 62-818 and 62-819, Florida Administrative Code (F.A.C.). FCT is dedicated to working with communities across the state to acquire lands for recreation, open space and working waterfronts.

FCT works with grant recipients to foster responsible stewardship of those lands once acquired. The quality of life, environmental quality, as well as viability and vitality of the urban areas of this state are directly linked to urban open space and greenways. The preservation of these unique natural spaces in urban areas of the state is necessary to introduce local populations, especially urban populations, to Florida's natural heritage.



*Helene Klein Pineland Preserve (03-011-FF3)  
Broward County*

After a project has been acquired by the grant recipient, FCT stewardship continues in perpetuity through a formal agreement to provide guidance on park development and management oversight. This is accomplished through annual stewardship reporting and site visits.

Projects funded by FCT provide land for recreational opportunities to enhance the health and well-being of the residents of this state. The majority of FCT's projects meet one or more of these objectives to implement local government comprehensive plans:

- Provide conservation lands;
- Provide urban open spaces;
- Provide public parks; and
- Provide greenways.

What follows are representative examples of innovative ways that FCT grant recipients are developing and managing these sites. Each of these parks is a fully-developed site originally acquired with FCT Parks and Open Space Florida Forever Grant Program assistance.



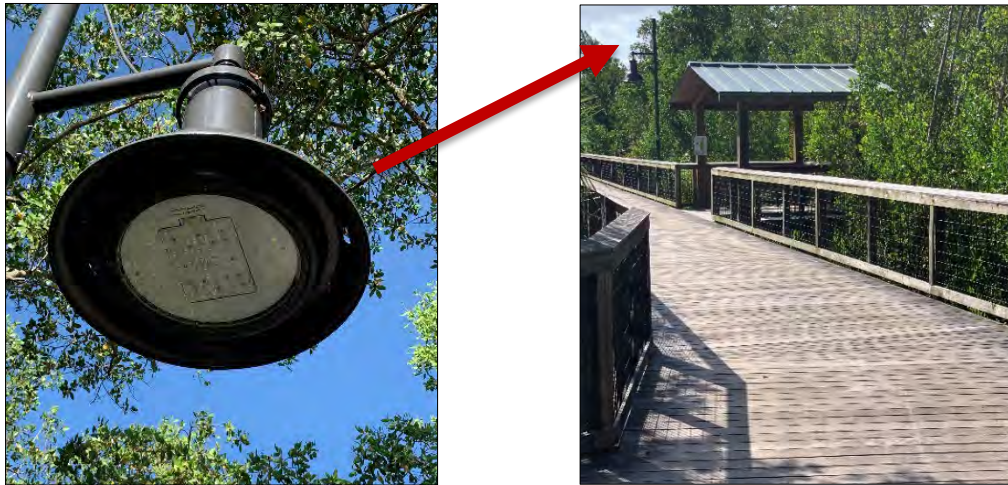
*Legacy Park (08-024-FF8)  
City of Venice*

# Sustainable Initiatives

## Collier County

### Gordon River Water Quality Park and Greenway, FCT Number 06-043-FF6

Acquired in 2006 and opened to the public in 2009, Collier County has employed sustainable practices in the development of this park. Pictured below is an example of the lighting deployed along the park boardwalk. The LED lighting is specifically chosen for energy efficiency. The lights are designed to reduce “spillover” of light into the surrounding areas. This lessens the impact of the safety lighting on wildlife and neighboring areas.



*Gordon River Water Quality Park and Greenway (06-043-FF6)  
Collier County*



*Caloosahatchee Creeks Preserve  
(01-031-FF1)  
Lee County*

## Lee County

### Caloosahatchee Creeks Preserve, FCT Number 01-031-FF1

Lee County has partnered with FCT in the acquisition of seven project sites since the program’s inception in 1991. The county has designed project elements to work in harmony with both the habitat and the people who visit these sites. As an example, the county installed mulching restrooms at many of their park sites, including the one pictured to the left. This is located in Caloosahatchee Creeks Preserve (West), just off of I-75 north of Fort Myers.



## Lee County

### Wild Turkey Strand Preserve, FCT Number 04-031-FF4

Lee County has invested in a relatively unique hard surface for some of its trails. A good example of this is found at Wild Turkey Strand Preserve. The county installed hard-surface trails, some of which are composed of a material similar to poured-in-place rubberized surface. This provides an excellent surface in terms of accessibility and the choice of color blends in with the natural habitat. The same can be said with the boardwalk over areas that tend to become saturated during the rainy season.



*Wild Turkey Strand Preserve (04-031-FF4)  
Lee County*

## Community Gardening

### St. Johns County

#### Walter Jones Historical Park, FCT Number 93-006-P3A

Tucked away between the St. Johns River and Mandarin Road in Jacksonville is the Walter Jones Historical Park. Major William Webb acquired this 10-acre site and the land that surrounds it in 1875. He quickly developed a home, barn and, among other improvements, a large garden.

On the site, Webb cultivated 600 mandarin orange trees (for which the community of Mandarin is named), potatoes, tomatoes, cucumbers, strawberries and beans. These goods would be grown on the site and shipped north via steamships.



*A view of the community garden with the one-room schoolhouse in the background (photo courtesy of Sandy Arpen)*

Today, much of those same vegetables are grown on the site nearly 140 years later. In addition to the vegetables that were originally grown, there are also collard greens, broccoli, cabbage, romaine lettuce, kale, turnips and much more, with each row in the vegetable garden representing a different crop. The inspiration for what is chosen to be grown in the community garden stems from *Palmetto Leaves*, a book written by Harriet Beecher Stowe, who lived in Mandarin

and wrote detailed accounts of the crops grown here and how they performed.

The garden, which is planted and maintained by volunteer Master Gardeners through the University of Florida Institute of Food and Agricultural Sciences Duval County Extension, is but one point of interest on this project site, known as much for its large oak trees dripping in Spanish moss as it is for its historical structures. Other unique structures at this FCT site include the last remaining one-room schoolhouse in Duval County. Built in 1898 by the Sisters of St. Joseph, it was originally named the St. Joseph's Mission Schoolhouse for African American children. Other historical structures found on the site include the 1875 Webb Farmhouse, the 1876 barn and the Losco Winery. The City of Jacksonville's first historical park, the site also includes modern features such as a nature trail along a riverfront boardwalk, a picnic area, and restrooms.

## Virtual Education

### Alachua Conservation Trust Keep Florida Wild Virtual Series

In 2020, Alachua Conservation Trust (ACT), a nonprofit accredited land trust that works to protect the natural, scenic, historic and recreational resources in 16 counties across North Central Florida, launched its Keep Florida Wild Virtual Series as a way to engage with the public during the COVID-19 pandemic. The series includes monthly webinars, interactive videos and social media highlights of local conservation efforts and educational content about North Central Florida ecosystems and wildlife.

Since its launch, the Keep Florida Wild Series has incorporated content about FCT-supported projects, including a webinar on the hydrology of the Santa Fe River, which is protected in multiple locations as part of Santa Fe River Preserve (08-082-FF8). Another webinar hosted as part of the series provided participants with information about Prairie Creek Conservation Cemetery and conservation burial options. The cemetery is located at Prairie Creek Preserve (06-096-FF6), which also includes land protected with support from FCT.

ACT has also launched several video walking tours of its preserves, including Blues Creek Ravine Preserve (01-141-FF1), Serenola Preserve (18-019-FF19) and Tusawilla Preserve (04-071-FF4). The walking tours highlight special features on each preserve and provide a way for everyone to explore the outdoors virtually. Visit [www.AlachuaConservationTrust.org/KeepFLWild](http://www.AlachuaConservationTrust.org/KeepFLWild) to learn more about ACT and the Keep Florida Wild Series.







*Tuscawilla Preserve (04-071-FF4)  
Alachua Conservation Trust*



*Blues Creek Preserve (01-141-FF1)  
Alachua Conservation Trust*

## Unique Abilities

### City of Plant City

#### Massie Zack Park and Preserve, FCT Number 95-027-P56

Wildlife observation towers are an excellent way to provide visitors with a landscape view of Florida’s natural beauty. Unfortunately, designing these facilities to provide access to visitors of varying abilities presents land managers with a challenge. The City of Plant City met this challenge by bringing the view to ground level. Cameras are placed at the top level of the tower and outdoor-friendly video screens are installed on an accessible platform near ground level. This provides a viewing opportunity for visitors who would otherwise be unable to access the top level of the tower.



*Massie Zack Park and Preserve (04-071-FF4)  
City of Plant City*

### Lee County

#### Prairie Pines Preserve Addition, FCT Number 03-060-FF3

Another example of providing opportunities for all visitors, Lee County installed a wildlife observation blind on a spur of the park’s accessible trail. The blind was designed with observation portals at two different levels, allowing all users to comfortably take advantage of the views offered on this site.



*Prairie Pines Preserve Addition (03-060-FF3)  
Lee County*

## FISCAL YEAR 2020-21 PARKS AND OPEN SPACE GRANT APPLICATION CYCLE

In November 2020, FCT initiated the FY 2020-21 grant submission cycle. Eligible applicants submitted a total of 16 applications for funding. FCT staff conducted a thorough review of each application, culminating in a preliminary priority list to be presented to the FCT Board. Final grant awards are expected to be announced in FY 2021-22.

FCT #	Project Name	Applicant Name	Acres
20-001-FF21	Grace and Truth Corridor Capstone	Pasco County	318.00
20-003-FF21	McCullough Creek Conservation Area	St. Johns County	1,394.00
20-004-FF21	Gladys Douglas Hackworth Property Acquisition	Pinellas County, City of Dunedin	44.00
20-005-FF21	36 Acre Park	City of Parkland	24.38
20-006-FF21	Savannas Greenway Trailhead	St. Lucie County	29.49
20-007-FF21	Resiliency Park	Village of Key Biscayne	0.46
20-008-FF21	Buffer Land Acquisition Project	Town of Cutler Bay	8.44
20-009-FF21	Plantation Tropical Preserve-Acquisition of Parcel	Islamorada, Village of Islands	0.14
20-010-FF21	Lily Street Park Acquisition	City of Atlantic Beach	2.00
20-011-FF21	Frank Brown Park Expansion	City of Mount Dora	10.00
20-012-FF21	Carter Woodson Park	City of Oakland Park	0.62
20-013-FF21	Hastings Ranch	City of St. Cloud	219.44
20-014-FF21	Wellington Environmental Preserve	Village of Wellington	45.00
20-015-FF21	Rocky Creek Trails, Phase Two	Hillsborough County	10.20
20-016-FF21	North Springs Improvement District Land Acquisition and Conservation Project	North Springs Improvement District	116.06



# FLORIDA COMMUNITIES TRUST POST-COMPLETION WEBINAR

On May 19, 2021, FCT staff conducted a Post Completion webinar to educate and assist local FCT project managers with the responsibilities associated with managing lands acquired using FCT funds. This was a follow-up to regional workshops conducted in October 2019.

The realities of the pandemic required staff to re-think this process. Rather than schedule regional workshops as before, FCT presented the workshop as an online webinar. Attendance at the webinar peaked at over 120 attendees, which is a program high and higher than the total in-person attendance in the face-to-face workshops.

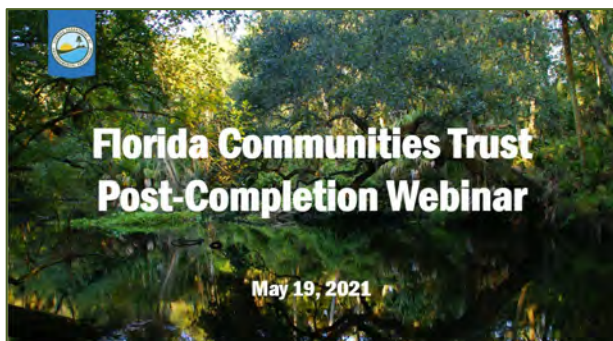
Participants came away with a better understanding of their post-completion responsibilities, including:

- Development of FCT Project Sites.
- Stewardship Reports.
- 5-Year Stewardship Transition.
- Bond Requirements and Revenue Reports.
- Leases/Use Agreements/Memoranda of Understanding/Management Agreements.
- Changes to Management Plans.
- Amendments to Declarations of Restrictive Covenants.
- Boundary Modifications.
- Linear Facilities.
- Land Exchanges.
- Transfer or Reversion of FCT Project Sites.



*FCT Staff (left to right):  
William McMahon, Linda Reeves, Rita Ventry, Bill Bibby*

*Screenshots of slides used in the May 19, 2021, FCT Post Completion Webinar.*



# STAN MAYFIELD WORKING WATERFRONTS FLORIDA FOREVER GRANT PROGRAM

The preservation of Florida's rich history in the traditional seafood harvesting and aquaculture industry was the inspiration behind the creation of the Stan Mayfield Working Waterfronts Florida Forever Grant Program. Florida's commercial fishing industry has faced a number of challenges in recent years, from hurricane damage to soaring fuel prices. Despite these challenges, Florida fishermen continue to persevere. They do so, in part, due to the success of this program with the allocation of funds to deserving applicants.



*The Homosassa Heritage Park and Working Waterfront (18-001-WW19) was acquired with Stan Mayfield Working Waterfronts Florida Forever Grant Program funds in 2020. Stone crab and shrimp boats (left) tie into the slips next to the seafood market.*

The purpose of this FCT administered grant program is to acquire parcel(s) of land directly used for the commercial harvest of marine organisms, such as the project pictured above. Funds are also used to acquire saltwater products by state-licensed commercial fishermen, aquaculturists or business entities, including piers, wharves, docks or other facilities operated to provide waterfront access to licensed commercial fishermen, aquaculturists or business entities. The funds may also be used for the acquisition of a parcel(s) of land used for exhibitions, demonstrations, educational venues, civic events and other purposes that promote and educate the public about the economic, cultural and historic heritage of Florida's traditional working waterfronts, including the marketing of the seafood and aquaculture industries.

Another program benefit is the salvation of these sites from waterfront development. Such was the case with Griffis Landing at Blue Crab Cove (08-002-WW1), purchased by Brevard County in 2010 with \$1.86 million coming from a Stan Mayfield Working Waterfronts Florida Forever grant. The purchase precluded the construction of an 11-story waterfront condominium and now serves the local crabbing and fishing industry.

To date, the program has expended over \$9 million that has gone to the acquisition of several projects, restoring more than eight acres back to traditional working waterfronts.



*A 3D model of the proposed layout of the Homosassa project, rendered by students from the University of South Florida.*



# SITE VISITS

## Region One: North Florida



*Old Chimney Park (98-090-P8A), City of Pensacola  
A 30-foot tall chimney is all that remains of an 1854 steam power plant that serves as a reminder to the thousands that pass it daily driving on Scenic Highway of the once-thriving timber era in Escambia County.*



*Hogtown Creek Headwaters (06-095-FF6), City of Gainesville  
An Army veteran takes a moment to read an educational kiosk describing a 19<sup>th</sup>-century farmhouse.*



*Hogtown Creek Headwaters (06-095-FF6), City of Gainesville  
One of the many educational kiosks that line the nature trail of the nearly 75-acre Hogtown Creek Headwaters Park.*



*North Beach Park (92-011-P2A), City of Fernandina Beach  
A gopher tortoise, a threatened species, takes a moment out of his day to enjoy the natural communities.*



# Region Two: Southwest Florida



*Key Tree Cactus Preserve, (08-028-FF8), Islamorada, The Village of Islands  
The Key Tree Cactus, top left, is an endangered plant species. One of the few places in North America where this species can be observed growing in the wild is Key Tree Cactus Preserve.*



*Sunset Vista Park (09-007-P9A), City of Treasure Island  
This beach park achieved the distinction of transitioning to a 5-year Stewardship Reporting after a site visit in June 2021.*



*Sunset Park Addition (01-001-CS7), City of Key Colony Beach  
This beach park is one of the "hidden gems" in the inventory of FCT acquisitions.*



*Sunset Vista Park (09-007-P9A), City of Treasure Island  
This beach park achieved the distinction of transitioning to a 5-year Stewardship Reporting after a site visit in June 2021.*



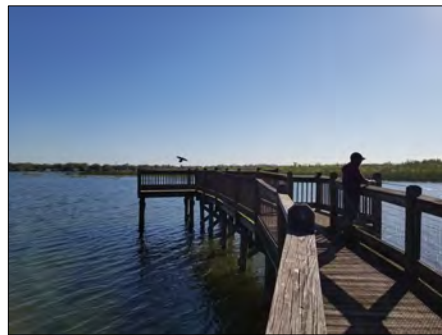
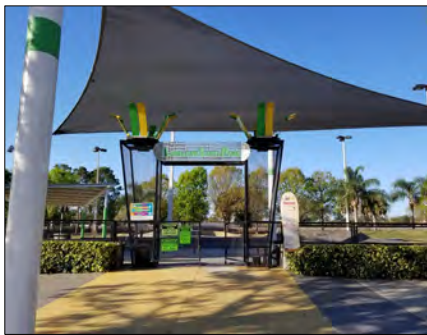
# Region Three: Southeast Florida



*Howell Branch Preserve (04-051-FF4), City of Winter Park  
This park is another example of the combination of a park developed for all activities from active recreation for the kids and a more leisure activity such as picnicking or walking.*



*Ponce Preserve (94-033-P4A & 03-064-FF3), Ponce Inlet  
This beach park achieved the distinction of transitioning to a 5-year Stewardship Reporting after a site visit in February 2021.*



*Lake Bonny Community Park (92-002-P2A), City of Lakeland  
This park is used as a multi-purpose park containing everything from active recreational opportunities and nature observation areas. Here you see a skatepark, a man fishing on a fishing pier/boardwalk and mothers taking their children for a stroll down a trail.*

# CLOSINGS AND REIMBURSEMENTS

During FY 2020-21, four FCT grant projects closed and the grant recipients were reimbursed.

**Project:** 18-017-FF19, North Fork II Addition (Zorc Parcel) Acquisition Project (aka Captain Hammond's Hammock Preserve)

**Recipient:** St. Lucie County

**Area:** 20.93 Acres

**Total Project Cost:** \$ 528,472.42

**FCT Grant Award:** \$ 264,236.21

**Local Match:** \$ 264,236.21



*Captain Hammond's Hammock Preserve (18-017-FF19)  
St. Lucie County*

## PROJECT DETAILS

This project brings an additional 20.93 acres under the protection of Captain Hammond's Hammock Preserve. This second of two FCT grant projects (North Fork II FCT# 01-098-FF1 and North Fork II Addition FCT# 18-017-FF19) creates a 54.54-acre preserve located in a historic area of St. Lucie County. The project site consists of a variety of upland and wetland habitats including hydric hammock, mesic flatwoods, floodplain forest and floodplain marsh. The historic uses of parcels in this region consisted of early agriculture, such as citrus production and cattle grazing. Today, the surrounding area is developing, and its uses are shifting to urbanization due to the development pressures occurring in South Florida.

In total, the project site protects nearly 4,000 linear feet of shoreline along the North Fork St. Lucie River and is encompassed within the North Fork, St. Lucie River Aquatic Preserve. The river has been an area of focus among several land acquisition programs, including the Florida Forever program, FCT, the South Florida Water Management District's Save Our Rivers program and St. Lucie County's Environmentally Significant Lands program. Today, acquisition efforts have preserved nearly 4,000 acres of upland and floodplain along the river. Together with Captain Hammond's Hammock project, these conservation lands provide important connectivity for wildlife, greenways and the future North Fork St. Lucie River paddling trail. As a state aquatic preserve, the river is designated as an Outstanding Florida Water. The river also supports a variety of wildlife and is approximately 16 miles long through the natural river bends.



*Captain Hammond's Hammock Preserve (18-017-FF19)  
St. Lucie County*

Once fully developed, the new parcel will benefit from additional planned improvements within the adjacent FCT projects including primitive camping, trail benches, canoe/kayak launches, picnic pavilions, parking, educational kiosks, wildlife viewing and fishing platforms, and a composting restroom.



**Project:** 18-021-FF19, Turnbull Creek Watershed Preservation Project

**Recipient:** City of New Smyrna Beach

**Area:** 145.032 Acres

**Total Project Cost:** \$ 8,942,400.00

**FCT Grant Award:** \$ 3,576,960.00

**Local Match:** \$ 5,365,440.00



*Turnbull Creek Watershed Preservation Project (18-021-FF19)  
City of New Smyrna Beach*

## PROJECT DETAILS

Turnbull Creek Watershed Preservation Project is located along Turnbull Creek and adjacent to Holland Park in the City of New Smyrna Beach. The undisturbed parcels of this project form a natural watershed for tidal flow from the creek into Turnbull Bay to Spruce Creek. It is one of the area's most environmentally significant waters recognized as an Outstanding Florida Water and connects to the Halifax River. By abutting existing park land, this addition will further protect the watershed as well as enhance natural recreation opportunities. The creek itself has a rich cultural and historic significance. Hand-dug in the 1760-time frame by settlers of Dr. Andrew Turnbull's Smyrna Colony, the creek was a part of a system of "Egyptian Style" canals built and lined with locally quarried coquina rock. The canals, used as irrigation for the settlement, were thought to be the first of their type built in the new world. Remnants of the canals were added to the National Register of Historic Places in 2007. Equally important to the community is the environmental benefit these parcels have toward mitigating flooding during periods of heavy rain from tropical systems and regular seasonal thunderstorm



*Turnbull Creek Watershed Preservation Project (18-021-FF19)  
City of New Smyrna Beach*

activity. Leaving these parcels largely undeveloped will reduce the runoff of pollutants into the existing collection systems and help replenish the important potable water aquifer.

The project site abuts another city-owned park called Holland Park and will enhance the natural recreation opportunities of the whole community. The site already has an existing multi-use trail that runs through this property along the New Smyrna Beach Utilities Commission's easement. The amenities to be developed on this property include an unpaved nature trail with an educational kiosk at the trailhead and interpretive signage along the trail educating the public about the environmental and historical significance of the property, an observation tower for bird and nature watching, picnic facilities and benches along the creek.

FCT awarded the city \$3,576,960 through the Parks and Open Space Florida Forever Grant Program. The acquisition of the nine parcels that total approximately 145 acres will be a big step toward the city's effort to keep this land in its natural state, bounded by existing park land and natural watershed forming a green corridor for its citizens and visitors to enjoy located within the metro area of the city.

**Project:** 18-001-FF19, Turkey Creek Park Acquisition, Phase V (Hardees Site)

**Recipient:** City of Niceville

**Area:** .50 Acres Acquisition  
9.73 Land Match  
10.23 Total Acreage under FCT protection

**Total Project Cost:** \$ 1,007,711.16

**FCT Grant Award:** \$ 598,781.97

**Local Match:** \$ 408,929.19



*Turkey Creek Park (18-001-FF19)  
City of Niceville*

## PROJECT DETAILS

The City of Niceville received FCT Grant 18-001-FF19 to purchase a .50-acre parcel adjacent to Turkey Creek Park. The city used the land value of an additional four parcels as its share of the total project cost. This project brings an additional five parcels at a total of 10.23 acres under FCT protection into Turkey Creek Park. This is the third series of FCT grant projects that acquired land for this gem in the city's park system.



*Turkey Creek Park (18-001-FF19)  
City of Niceville*

This project represents Phase V of park improvements including the FCT-funded Phase III (FCT# 94-014-P4A) and Phase IV (FCT# 11-015-FF11). The acquisitions provide for enhanced public access to recreation facilities. Additionally, this project adds to the lasting protection of the designated Turkey Creek Ecological Corridor.

The proposed improvements to the newly acquired sites are limited. The new acquisition was once the site of a fast-food restaurant. Future plans will take advantage of the existing concrete slab as a parking and staging area for the rest of the park. Planned improvements also call for trails on the four pre-acquired sites. These four sites will also be added to the joint management program for the park with the Florida Department of Agriculture and Consumer Services (Florida

Forest Service) and the Florida Fish and Wildlife Conservation Commission. Moreover, the Turkey Creek Park is a state-designated paddling and hiking trail and is adjacent to Eglin Air Force Base.

Altogether, this project brings lands protected by Turkey Creek Park to 187.75 acres.



**Project:** 18-019-FF19, Serenola Forest

**Recipient:** Alachua Conservation Trust and Alachua County Board of County Commissioners

**Area:** 111 Acres

**Total Project Cost:** \$ 3,247,768.95  
**FCT Grant Award:** \$ 1,487,478.18  
**Local Match:** \$ 233,471.70 (ACT)  
 \$1,526,819.07 (Alachua County)



*Serenola Forest (18-019-FF19)  
 Alachua Conservation Trust and Alachua County*

## Project Details

Alachua Conservation Trust, a nonprofit environmental organization, partnered with the Alachua County Board of County Commissioners on this project. Together, this public-private partnership received FCT Grant 18-019-FF19 to purchase a 111-acre parcel north of Paynes Prairie Preserve State Park. This grant project represents phase two of a multi-phase project that will culminate in the protection of a 206-acre forest.



*Serenola Forest (18-019-FF19)  
 Alachua Conservation Trust and Alachua County*

The Serenola Forest project will provide the Gainesville community with access to a recreational resource and will protect and enhance the ecological corridor between the Forest and Paynes Prairie Preserve State Park. This will also preserve and restore the native flora and fauna in the area. Serenola Forest serves as a keystone acquisition by connecting a large conservation area with current and future conservation easements located on the southern and eastern sides of Serenola Forest to Paynes Prairie Preserve State Park.

The Phase II parcels feature an existing trail system that has been created and maintained by neighbors who use the trails for pedestrian recreation. Future enhancement of the existing trail system includes the creation of access points for nearby neighborhoods and schools.

Residents will greatly benefit from the ever-engaging environment for both exercise and interactions with the natural space. All the surrounding community will see an enhancement of existing uses with future changes that bolster access, increase community use and facilitate engagement with Serenola Forest.

Proposed outdoor facilities include a picnic pavilion, wildlife observation deck, informational kiosks, two bike racks and three benches along the multiuse trail. All enhancements will be positioned in a way that the local community will have easy access without taking away from the natural state of the forest. Approximately .75 miles of the trail system will be ADA compliant. Community projects are planned to help replant the native vegetation and remove invasive species thus improving wildlife habitat.

# ACQUIRED PROJECTS: 1991 – 2021

Project #	Project Name	Recipient	Acres
<b>Alachua County</b>			
91-049-P1A	Hogtown Creek Greenway	City of Gainesville/ Alachua County	483.85
99-039-P9A	Depot Junction	City of Gainesville	17.94
01-103-FF1	Micanopy Native American Heritage Preserve	Town of Micanopy	15.70
01-141-FF1	Blues Creek Ravine and Fox Pond	Alachua Conservation Trust	160.00
01-149-FF1	Beville Creek	City of Gainesville	30.48
02-043-FF2	Mill Creek Nature Preserve	Alachua County	1,188.22
02-077-FF2	Duval Neighborhood Stormwater Park	City of Gainesville	26.20
02-089-FF2	San Felasco Conservation Corridor	City of Alachua	15.29
05-024-FF5	Paynes Prairie Sweetwater Addition	Alachua County	120.99
04-071-FF4	Tuscawilla Lake	Alachua Conservation Trust	377.69
06-110-FF6	Barr Hammock Ledwith Prairie	Alachua County/ Conservation Trust for Florida	2,302.96
06-096-FF6	Prairie Creek Basin	Alachua Conservation Trust	318.10
06-096-FF6	Prairie Creek Basin	Alachua Conservation Trust	48.79
06-095-FF6	Hogtown Creek Headwaters	City of Gainesville	74.62
07-115-FF7	Phifer Flatwoods	Alachua County	644.52
07-114-FF7	Levy Prairie (aka Barr Hammock Preserve)	Alachua County	3,270.24
08-085-FF8	Little Orange Creek	City of Hawthorne	1,301.90
08-085-FF8	Little Orange Creek - Blackwood Parcel	City of Hawthorne	7.46
11-021-FF11	Turkey Creek Hammock Preserve	Alachua County	376.58
08-082-FF8	Santa Fe Preserve	Alachua County	167.09
16-016-UA17	Upper Santa Fe River Corridor	Alachua County	713.93
18-019-FF19	Serenola Forest	Alachua Conservation Trust and Alachua County	110.93
<b>Baker County</b>			
03-040-FF3	St. Mary's Shoals	Baker County	1,631.70
08-069-FF8	St. Mary's Shoals - Phase II	Baker County	864.50
08-069-FF8	St. Mary's Shoals - Phase II - Rhoden Parcel	Baker County	72.02
<b>Bay County</b>			
92-021-P2A	Thomas Drive Beach Access	Bay County	4.72
92-042-P2A	Parker Tract	City of Mexico Beach	1.54
93-027-P3A	Oaks by the Bay	City of Panama City	4.80
93-026-P3A	Sweetbay Wetlands Preserve	City of Panama City	5.77
96-006-P7A	Parker Environmental Exploratorium	City of Parker	12.03
96-025-P7A	Venetian Sunset Park	City of Panama City	0.93
01-153-FF1	Coral Bean Addition Under the Oaks Park	City of Parker	11.43
01-150-FF1	Pier Park	City of Panama City Beach	69.24
<b>Brevard County</b>			
91-016-P1A	Turkey Creek Scrub	Brevard County	34.65
95-019-P56	Manatee Sanctuary Park	City of Cape Canaveral	10.24
95-063-P56	Malabar Sanctuary Greenway I	Town of Malabar	142.64
95-064-P56	Ais Lookout Point	City of Palm Bay	3.45
95-079-P56	Wavecrest Park Extension	Town of Indialantic	0.91
96-019-P7A	Malabar Sanctuary Greenway	Town of Malabar	27.19
96-059-P7A	Turkey Creek Blueway	City of Palm Bay	20.17
96-060-P7A	Castaway Point	City of Palm Bay	0.45

Project #	Project Name	Recipient	Acres
<b>Brevard County (continued)</b>			
96-062-P7A	Banana River Park	City of Cape Canaveral	5.01
98-044-P8A	Oceanfront Wildlife and Habitat Preserve	City of Satellite Beach	15.00
98-076-P8A	Melbourne Beach Loggerhead Park	Town of Melbourne Beach	1.04
99-044-P9A	Oceanfront Preservation	City of Satellite Beach/ Brevard County	2.16
01-065-FF1	Shoreside Park	Town of Palm Shores	0.32
01-077-FF1	Cocoa Conservation Area	City of Cocoa	163.27
02-038-FF2	Downtown Stormwater Park	City of Titusville	4.20
03-020-FF3	Eau Gallie Square	City of Melbourne	0.56
03-035-FF3	Cocoa Beach Maritime Hammock Preserve	City of Cocoa Beach	5.42
05-030-FF5	Max K. Rodes Park	Brevard County	119.13
06-055-FF6	Molitor Property	City of Titusville	5.75
06-001-FF6	Anderson Stormwater Park	City of Rockledge	9.92
06-080-FF6	Thousand Islands Conservation Area	Brevard County	240.48
11-031-FF11	Veteran's Memorial Park	Brevard County	43.53
08-002-WW1	Blue Crab Cove	Brevard County	2.79
<b>Bradford County</b>			
<b>Broward County</b>			
93-025-P3A	Environmental Preserve	Town of Pembroke Park	9.37
94-008-P4A	The Sawgrass Sanctuary	City of Sunrise	10.00
94-015-P4A	Sheridan Oak Forest	City of Hollywood/ Broward County	12.88
95-055-P56	Island City Park Preserve	City of Wilton Manors	1.72
96-014-P7A	Sabal Pines Park	City of Coconut Creek	15.27
96-058-P7A	Sandy Ridge Sanctuary	City of Coral Springs	37.91
99-036-P9A	Academic and Outdoor Recreation Village	City of Pembroke Pines	28.21
99-073-P9A	Carpenter's Sand Pine Preserve	City of Oakland Park	5.63
00-025-P10	McNab Park Restoration	City of Tamarac	7.97
00-055-P10	Richardson Property	City of Wilton Manors/ Broward County	5.40
00-071-P10	Pembroke Pines Preservation Expansion	City of Pembroke Pines	8.49
01-047-FF1	Plantation Central Open Space	City of Plantation	213.82
01-074-FF1	Pleasant Oceanside Preserve	City of Deerfield Beach	0.67
01-076-FF1	Island City Park Addition	City of Wilton Manors	0.31
01-093-FF1	Hollywood North Beach Addition	Broward County/City of Hollywood	0.22
01-113-FF1	Sheridan Street ESL Addition	Broward County	5.36
01-118-FF1	Miramar Pineland ESL Addition	Broward County/City of Miramar	52.68
02-002-FF2	Central Broward Regional Park	Broward County/City of Lauderhill	81.00
02-018-FF2	Florence Hardy Park	City of Fort Lauderdale	3.10
02-021-FF2	Last Cypress East	Broward County/ City of Lauderdale Lakes	6.45
02-022-FF2	Last Cypress West	Broward County/ City of Lauderdale Lakes	6.38
02-049-FF2	Southwest Nature and Recreational Park	City of Pembroke Pines	56.52



Project #	Project Name	Recipient	Acres
<b>Broward County (continued)</b>			
02-088-FF2	Davie's Wetlands Restoration	Town of Davie	115.05
03-010-FF3	Highlands Scrub Addition	Broward County	4.53
03-011-FF3	Helene Klein Pineland Preserve	Broward County	12.09
03-012-FF3	Hillsboro Pineland ESL Addition	Broward County	11.68
03-014-FF3	Mills Pond Addition	Broward County	22.98
03-022-FF3	Country Estates Open Space and Fishing Hole	Town of Southwest Ranches	16.40
03-025-FF3	Southwest Meadows Sanctuary	Town of Southwest Ranches	16.87
03-026-FF3	Frontier Trails Conservation Area	Town of Southwest Ranches	93.23
03-043-FF3	Tamarac Preservation Park	City of Tamarac	15.10
04-003-FF4	Whispering Woods Park	Broward County/City of Coral Springs	11.36
04-007-FF4	Hollywood North Beach Park Addition 2	Broward County	0.54
04-008-FF4	Little Fuzzy Bunny Cove	Broward County/City of Dania Beach	5.08
04-011-FF4	Saw Palmetto aka Hillsboro Pineland	Broward County	9.08
04-002-FF4	Vista View Regional Park Expansion	Broward County	61.05
04-019-FF4	Calusa Corners	Town of Southwest Ranches	11.62
04-012-FF4	Deerfield Beachfront Park	City of Deerfield Beach/ Town of Hillsboro	0.29
04-010-FF4	Sunny Lake Trailhead and Conservation Park	Town of Davie	16.87
05-006-FF5	West Creek Pineland Passage	Broward County	7.43
04-009-FF4	Coontie Hatchee Landing	Broward County/City of Fort Lauderdale	2.60
05-002-FF5	North Fork Riverwalk	Broward County/City of Fort Lauderdale	2.00
05-048-FF5	Davie Farm Park	Town of Davie	54.37
06-011-FF6	Central Broward Regional Park	Broward County	3.70
07-004-FF7	Chapel Trail Nature Preserve	City of Pembroke Pines	9.40

<b>Calhoun County</b>			
96-055-P7A	Atkins Park Addition	Calhoun County	180.55

<b>Charlotte County</b>			
92-012-P2A	Tippecanoe Scrub	Charlotte County	346.92
94-027-P4A	Punta Gorda Nature Park	City of Punta Gorda	19.00
94-020-P4A	Amberjack Slough	Charlotte County	182.53
96-008-P7A	Charlotte Harbor Flatwoods Addition (aka Charlotte Flatwoods Environmental Park)	Charlotte County	486.50
98-026-P8A	Oyster Creek Park - Dunwoody	Charlotte County	131.70
98-025-P8A	William R. Gaines Memorial Veterans Park (PKA Sunrise Park)	Charlotte County	40.28
99-013-P9A	Englewood Beach	Charlotte County	2.15
99-064-P9A	San Casa	Charlotte County	117.53
01-018-FF1	Bayshore Linear Park	Charlotte County	2.12
01-024-FF1	Cedar Point Park	Charlotte County	16.19
01-026-FF1	South County Regional Park	Charlotte County	62.31
01-063-FF1	Tippecanoe Scrub Environmental Park - Phase II	Charlotte County	25.10
03-091-FF3	Cedar Point Park - Phase III	Lemon Bay Conservancy	1.64
04-004-FF4	Amberjack Scrub Environmental Park - Phase II	Charlotte County	34.33
05-020-FF5	Bayshore Park Addition - Phase II	Charlotte County	0.11
08-014-FF8	Buck Creek Preserve (aka Bill Coy Preserve)	Charlotte County	68.75

<b>Citrus County</b>			
95-015-P56	Wallace Brooks/Lake Henderson	City of Inverness	4.80
95-016-P56	Cooter Pond	City of Inverness	0.94

Project #	Project Name	Recipient	Acres
<b>Citrus County (continued)</b>			
96-002-P7A	Nature Coast Environmental Center	City of Crystal River	12.42
01-138-FF1	Kings Bay	City of Crystal River	3.28
08-088-FF8	Three Sisters Springs	City of Crystal River	57.11
18-001-WW19	Homosassa Heritage Park and Working Waterfront	The Homosassa Civic Club, Inc.	2.01

<b>Clay County</b>			
96-022-P7A	Keystone Beach - Smysor Park	City of Keystone Heights	3.74
02-045-FF2	Green Cove Springs Nature Preserve	City of Green Cove Springs	102.84
02-097-FF2	Moccasin Slough	Clay County	260.40
04-078-FF4	Camp Chowenwaw	Clay County	150.00
05-050-FF5	Green Cove Springs Nature Preserve	City of Green Cove Springs	13.06
08-048-FF8	Green Cove Springs Nature Preserve	City of Green Cove Springs	143.07

<b>Collier County</b>			
94-023-P4A	Master Mitigation Preserve	Collier County	85.44
95-017-P56	Lake Avalon County Park (aka Sugden Regional Park)	Collier County	117.06
01-040-FF1	The Naples Preserve	City of Naples	9.58
03-018-FF3	Lely Mitigation Park	Collier County	98.92
03-073-FF3	Preserve the Preserve	Collier County	1.44
04-042-FF4	Goodland Harbor	Collier County	2.64
05-027-FF5	Gordon River Water Quality Park	Collier County	39.96
06-043-FF6	Gordon River Greenway Park	Collier County	84.93

<b>Columbia County</b>			
94-001-P4A	Alligator Lake	Columbia County	878.97

<b>DeSoto County</b>			
----------------------	--	--	--

<b>Dixie County</b>			
02-096-FF2	Joe Henry Anderson Senior Park	Dixie County	4.43
08-062-FF8	Spurgeon Cheek Trailhead Camp	Dixie County	13.92
08-063-FF8	Mershon Williams Yellow Jacket Landing	Dixie County	21.28

<b>Duval County</b>			
91-046-P1A	Cedar Point	City of Jacksonville	193.50
92-031-P2A	Ortega Stream Valley Park	City of Jacksonville	317.30
92-032-P2A	Blue Cypress	City of Jacksonville	118.00
93-006-P3A	County Dock Historical Park	City of Jacksonville	10.30
95-051-P56	Intracoastal Waterway Park	City of Atlantic Beach	7.00
95-058-P56	Dutton Island Intracoastal Waterway Park	City of Jacksonville/ City of Atlantic Beach	37.77
96-050-P7A	Tree Hill Nature Center Addition	City of Jacksonville	10.30
96-052-P7A	Julington Creek Headwaters Park	City of Jacksonville	203.23
98-094-P8A	Julington Creek Headwaters Park II	City of Jacksonville	424.11
99-018-P9A	Dutton Island	City of Jacksonville/ City of Atlantic Beach	92.15
00-009-P10	Castaway Island Preserve	City of Jacksonville	311.84
01-034-FF1	Cradle Creek Preserve	City of Jacksonville Beach	36.54
01-112-FF1	McGirts Creek Park Expansion	City of Jacksonville	160.00
01-115-FF1	Reddie Point Preserve	City of Jacksonville	101.80
01-120-FF1	Jacksonville-Baldwin Rails to Trails Buffer	City of Jacksonville	625.77
01-122-FF1	Beach and Peach Urban Park	City of Jacksonville	68.44
02-086-FF2	Yellow Water Creek Trailhead	City of Jacksonville	264.56
03-046-FF3	McGirts Creek Park Expansion - Phase II	City of Jacksonville	264.52

Project #	Project Name	Recipient	Acres
<b>Duval County (continued)</b>			
03-048-FF3	Sal Taylor Creek Preserve	City of Jacksonville	406.43
04-052-FF4	Jacksonville-Baldwin Rails to Trails Buffer II	City of Jacksonville	325.45
05-044-FF5	Cedar Point Preserve - Phase II	City of Jacksonville	53.00
06-042-FF6	Ribault River Urban Waterfront Park	City of Jacksonville	2.28
06-078-FF6	Huguenot Memorial Park Expansion	City of Jacksonville	10.80
<b>Escambia County</b>			
95-014-P56	Jones Swamp Wetlands Preserve	Escambia County	440.61
98-090-P8A	Old Chimney Property	City of Pensacola	2.03
98-089-P8A	Scenic Highway Bluffs Preserve	City of Pensacola	7.36
96-033-P7A	North Escambia River Site	Town of Century	5.00
05-041-FF5	Jones Swamp Wetlands Preserve	Escambia County	10.03
<b>Flagler County</b>			
91-023-P1A	Princess Place	Flagler County	420.00
93-016-P3A	Princess Place II	Flagler County	930.36
95-013-P56	Silver Lake Park	City of Flagler Beach	47.59
96-005-P7A	Flagship Harbor Preserve	City of Flagler Beach/Flagler County	105.27
98-083-P8A	River to Sea Preserve at Marineland	Flagler County/ Town of Marineland	86.48
99-062-P9A	Mala Compra Greenway	Flagler County	4.57
00-105-P10	Matanzas Estuary GeoPark	Town of Marineland	125.79
01-013-FF1	Palm Coast Greenway	City of Palm Coast	56.77
02-013-FF2	Mirror Lake Watershed	City of Flagler Beach	5.21
04-050-FF4	Mala Compra Oceanfront Park Addition	Flagler County	5.00
04-024-FF4	Ocean Walk Park	City of Flagler Beach	5.56
08-027-FF8	Long's Landing Estuary	City of Palm Coast	9.25
11-026-FF11	Bay Drive Park - Phase II	Flagler County	12.94
<b>Franklin County</b>			
93-011-P3A	Apalachicola Riverwalk	City of Apalachicola	0.39
94-013-P4A	Carrabelle Riverwalk and Tidal Basin Park	City of Carrabelle	0.57
95-078-P56	Apalachicola Waterfront	City of Apalachicola	0.79
00-001-CS6	City of Apalachicola Area of Critical State Concern	City of Apalachicola	1,600
02-040-FF2	Carrabelle Wildlife Park	City of Carrabelle	53.36
04-063-FF4	Apalachicola Waterfront Park	City of Apalachicola	0.29
04-076-FF4	Crooked River Lighthouse Addition	City of Carrabelle	2.02
06-048-FF6	Apalachicola Riverwalk - Phase III - Senath Parcel	City of Apalachicola	2.4000
06-048-FF6	Apalachicola Riverwalk - Phase III	City of Apalachicola	0.8800
06-093-FF6	Indian Creek Park	Franklin County	5.0900
06-048-FF6	Apalachicola Riverwalk - Phase III - Cotton Exchange and Spohrer	City of Apalachicola	0.1100
07-111-FF7	Apalachicola Riverwalk - Phase V - Holmes and Peterson	City of Apalachicola	0.4400
08-078-FF8	Apalachicola Riverwalk - Phase VI - McLemore Parcel	City of Apalachicola	1.0800
08-004-WW1	Eastpoint Working Waterfront	Franklin County	0.87
08-006-WW1	Apalachicola Boatworks	City of Apalachicola	0.16
<b>Gadsden County</b>			
00-086-P10	Chattahoochee Nature and Recreation	City of Chattahoochee	98.21
03-067-FF3	Tanyard Creek Preservation Park - Phase I	City of Quincy	83.00
03-067-FF3	Tanyard Creek Preservation Park - Phase I	City of Quincy	33.70
04-070-FF4	Tanyard Creek Preservation Park - Phase II	City of Quincy	0.94
04-070-FF4	Tanyard Creek Preservation Park - Phase II	City of Quincy	0.32

Project #	Project Name	Recipient	Acres
<b>Gadsden County (continued)</b>			
04-070-FF4	Tanyard Creek Preservation Park - Phase II	City of Quincy	0.36
04-070-FF4	Tanyard Creek Preservation Park - Phase II	City of Quincy	0.36
04-070-FF4	Tanyard Creek Preservation Park - Phase II	City of Quincy	1.01
04-070-FF4	Tanyard Creek Preservation Park - Phase II	City of Quincy	0.18
04-070-FF4	Tanyard Creek Preservation Park - Phase II	City of Quincy	0.34
04-070-FF4	Tanyard Creek Preservation Park - Phase II	City of Quincy	0.32
04-070-FF4	Tanyard Creek Preservation Park - Phase II	City of Quincy	0.07
<b>Gilchrist County</b>			
98-033-P8A	Fort Fanning Heritage Park	City of Fanning Springs	9.81
<b>Gulf County</b>			
93-028-P3A	Shipyards Cove	City of Port St. Joe	3.19
08-077-FF8	Port St. Joe Waterfront Park	City of Port St. Joe	3.29
<b>Hamilton County</b>			
<b>Hardee County</b>			
98-001-P8A	Peace River Park	City of Wauchula	151.41
<b>Hendry County</b>			
<b>Hernando County</b>			
93-012-P3A	Cypress Lakes	Hernando County	324.46
95-029-P56	The Good Neighbor Trail	City of Brooksville	31.30
98-053-P8A	Cypress Lakes Preserve Addition	Hernando County	6.57
<b>Highlands County</b>			
94-042-P4A	Sun 'n Lakes Preserve	Highlands County	1,339.23
<b>Hillsborough County</b>			
91-053-P1A	Cypress Creek Preserve	Hillsborough County	1,318.47
92-038-P2A	Riverhills Park Addition	City of Temple Terrace	15.60
92-039-P2A	Temple Terrace Riverfront Park	City of Temple Terrace	53.25
92-041-P2A	Cypress Street Restoration Park	Hillsborough County/City of Tampa	37.51
93-018-P3A	Blackwater Creek Preserve	Hillsborough County	1,805.88
94-009-P4A	Blackwater Hammock	City of Tampa	6.72
95-027-P56	Massie/Zack Park and Preserve	City of Plant City	365.04
95-044-P56	Apollo Beach Park	Hillsborough County	58.25
95-045-P56	Flynn Lake Nature Park	Hillsborough County	161.90
96-010-P7A	Sterling Downs	Hillsborough County	445.86
98-047-P8A	New Tampa Flatwoods	City of Tampa	121.68
98-048-P8A	Fort Brooke Park	City of Tampa	2.20
98-054-P8A	Alafia Scrub	Hillsborough County	77.82
99-010-P9A	Cypress Creek Preserve - Phase II	Hillsborough County	827.34
99-026-P9A	Ribbon of Green	City of Tampa	1.24
00-032-P10	Riverhills Park Addition	City of Temple Terrace	5.40
00-045-P10	Fort Brooke Park Addition	City of Tampa	1.68
01-048-FF1	Triple Creek Greenway	Hillsborough County	751.40
01-049-FF1	Town 'n Country	Hillsborough County	127.37
02-073-FF2	Fish Hawk Creek	Hillsborough County	934.06
02-093-FF2	Fort Brooke - Phase III	City of Tampa	2.47
03-081-FF3	River Tower Park	City of Tampa	12.82
03-083-FF3	South MacDill 48	City of Tampa	47.49
04-032-FF4	Rocky Creek Trails	Hillsborough County	16.34
03-015-FF3	Alafia River - Phase I	Hillsborough County	1,267.10



Project #	Project Name	Recipient	Acres
<b>Hillsborough County (continued)</b>			
04-029-FF4	Alafia River - Phase II	Hillsborough County	328.80
04-029-FF4	Alafia River - Phase II	Hillsborough County	10.26
06-019-FF6	Triple Creek Greenway - Phase II	Hillsborough County	226.74
08-022-FF8	Lake Dan Preserve - Phase I	Hillsborough County	655.34
11-046-FF11	Lake Dan Preserve - Phase II	Hillsborough County	421.94
<b>Holmes County</b>			
96-035-P7A	Wrights Creek Site	Holmes County	68.16
<b>Indian River County</b>			
92-018-P2A	Wabasso Scrub	Indian River County	111.38
93-002-P3A	Prang Island	Indian River County/ City of Vero Beach	26.49
95-025-P56	AGC Industrial Tract	City of Sebastian/ Indian River County	75.78
94-032-P4A	Sebastian Scrub	City of Sebastian/ Indian River County	8.00
96-043-P7A	St. Sebastian PUD	City of Sebastian/ Indian River County	310.89
96-044-P7A	Round Island South	Indian River County	31.10
99-055-P9A	Oslo Riverfront South	Indian River County	66.23
98-057-P8A	Harmony Oaks	Indian River County	89.63
98-058-P8A	Oyster Bar Salt Marsh	Indian River County	100.20
99-056-P9A	North Sebastian C.A. Addition	Indian River County	18.72
01-055-FF1	Hallstrom Farmstead	Indian River County	92.71
01-154-FF1	Lost Tree Island	Indian River County/ Town of Indian River Shores/City of Vero Beach	507.61
02-058-FF2	Kroegel Homestead	Indian River County	2.61
03-084-FF3	Orca South Link	Indian River County	6.64
03-044-FF3	St. Sebastian River Greenway	Marine Resources Council	7.88
04-025-FF4	Ansin Tract	Indian River County	27.09
05-038-FF5	Russell Grove River Buffer	Indian River County	47.26
06-037-FF6	ORCA Diamond Tract	Indian River County	72.71
07-030-FF7	Fellsmere Trailhead Preserve	City of Fellsmere	85.70
07-039-FF7	South Prong Preserve	Indian River County	37.48
05-039-FF5	Jones' Pier	Indian River County	16.05
08-003-WW1	Sebastian Working Waterfront Collaborative	City of Sebastian	2.35
11-050-FF11	Sebastian Harbor Preserve	Indian River County	163
<b>Jackson County</b>			
95-077-P56	Merritt's Mill Pond	Jackson County	29.85
03-066-FF3	Marianna Performing Arts Park	City of Marianna	2.50
<b>Jefferson County</b>			
<b>Lafayette County</b>			
<b>Lake County</b>			
94-029-P4A	Minneola Park and Lake Scenic Trail	City of Minneola	13.45
95-041-P56	Lake Dora Recreation Park	City of Tavares	102.30
96-007-P7A	Old Dixie Highway Park	Town of Lady Lake	0.96
96-015-P7A	Tavares Elementary School Park	City of Tavares	10.62
03-086-FF3	PEAR Park Gateway	Lake County	50.78
04-030-FF4	Ferndale Preserve on Lake Apopka	Lake County	192.89
03-104-FF3	Leesburg Greenway Trail	City of Leesburg	53.61
03-104-FF3	Leesburg Greenway Trail	City of Leesburg	453.64
04-028-FF4	Mount Dora Recreation and Nature Park	City of Mount Dora	13.28
07-056-FF7	Inland Groves	City of Clermont	128.13
08-070-FF8	Inland Groves - Phase II	City of Clermont	91.73
11-007-FF11	Lake May Reserve	Lake County	14.00
16-005-UA17	West Lake Wetlands	City of Clermont	2.32

Project #	Project Name	Recipient	Acres
<b>Lee County</b>			
91-007-P1A	Pine Island Eagle Habitat	Lee County	107.00
92-015-P2A	Hickey Creek Mitigation Park	Lee County	729.37
93-019-P3A	Silver Key	City of Sanibel	46.94
95-003-P56	Gulfside Park Addition	City of Sanibel	22.34
96-046-P7A	Cultural and Environmental Learning Center	Town of Fort Myers Beach	2.77
99-029-P9A	East Riverside Neighborhood Park	City of Fort Myers	3.54
01-031-FF1	Caloosahatchee Creeks Preserve	Lee County	1,116.00
01-039-FF1	Pond Apple Park	City of Sanibel	8.60
02-072-FF2	San Carlos Bay - Bunche Beach Preserve	Lee County	727.00
02-098-FF2	Newton Beach Park	Town of Fort Myers Beach	0.80
03-059-FF3	City of Bonita Springs Island Park	City of Bonita Springs	1.68
03-060-FF3	Prairie Pines Preserve Addition	Lee County	320.05
04-031-FF4	Wild Turkey Strand Preserve	Lee County	2,040.55
08-012-FF8	Galt Preserve	Lee County	105.22
07-047-FF7	Pine Island at Mallacha Pass	Sarasota Conservation Foundation	229.39
<b>Leon County</b>			
94-034-P4A	Lafayette Heritage Trail	City of Tallahassee	795.14
95-034-P56	Governor's Park	City of Tallahassee	335.27
95-037-P56	Lake Munson Preserve	Leon County	67.60
95-036-P56	Okeehopee Prairie	Leon County	26.17
99-083-P9A	Timberlane Ravine	City of Tallahassee	57.27
00-035-P10	Jackson View	Leon County	44.52
01-152-FF1	St. Marks Headwaters	Leon County	426.29
02-110-FF2	Tallahassee Junction	City of Tallahassee	20.61
04-056-FF4	Magnolia Ravine	City of Tallahassee	8.99
04-067-FF4	Copeland Sink	Leon County/ Apalachee Land Conservancy	167.87
05-010-FF5	Capital Cascades Trail - Segment 4	City of Tallahassee	2.91
05-011-FF5	St. Marks Headwaters - Booth Phase II	Leon County	160.52
05-075-FF5	Timberlane Ravine - Phase II	City of Tallahassee	16.02
05-010-FF5	Capital Cascades Trail - Segment 4	City of Tallahassee	4.31
06-114-FF6	Dr. Charles Billings Greenway	City of Tallahassee	24.42
07-102-FF7	Fred George Greenway	Leon County	79.51
07-102-FF7	Fred George Greenway	Leon County	3.75
07-102-FF7	Fred George Greenway	Leon County	74.91
<b>Levy County</b>			
92-003-P2A	Yankeetown W R Park	Town of Yankeetown	2.43
93-004-P3A	Yankeetown Wilderness Addition	Town of Yankeetown	0.96
98-102-P8A	Devil's Hammock - Phase I	Levy County	3,265.32
00-018-P10	Withlacoochee Gulf Pathways	Town of Yankeetown	422.46
01-080-FF1	Cedar Key Cemetery Point Park	City of Cedar Key	4.65
<b>Liberty County</b>			
<b>Madison County</b>			
<b>Manatee County</b>			
94-024-P4A	Manatee Headwaters at Duette	Manatee County	2,211.74
96-029-P7A	Palmetto Estuary Preservation Project	City of Palmetto	11.75
98-008-P8A	Riverview Pointe	Manatee County	9.07
98-009-P8A	1912 Cortez Schoolhouse and Nature Preserve	Manatee County	3.95
98-006-P8A	Grassy Point Preserve	City of Holmes Beach	33.00
01-004-FF1	Bennett Park	Manatee County	152.83
02-006-FF2	Robinson Preserve	Manatee County	459.60

Project #	Project Name	Recipient	Acres
<b>Manatee County (continued)</b>			
03-075-FF3	Moody Branch	Manatee County	946.35
04-041-FF4	The Conservatory	Manatee County	55.42
05-026-FF5	Hidden Harbour	Manatee County	107.87
07-001-FF7	Neal Preserve	Manatee County	7.84
<b>Marion County</b>			
92-045-P2A	Silver Creek Property	Marion County	220.00
92-033-P2A	Heritage Nature Conservancy (O'Neal Site)	City of Ocala	11.24
95-033-P56	Dunnellon Municipal Park	City of Dunnellon	2.77
95-009-P56	Scott Springs	City of Ocala	23.74
98-043-P8A	Fort King	City of Ocala and Marion County	22.50
07-022-FF7	Blue Run of Dunnellon Park	City of Dunnellon	32.44
<b>Martin County</b>			
91-031-P1A	Kiplinger Site	Martin County	79.60
91-029-P1A	Gomez Avenue	Martin County	33.61
92-036-P2A	Beachwalk Pasley	Martin County	10.17
92-035-P2A	Otter Creek	Martin County	35.94
93-014-P3A	Lake Okeechobee Ridge	Martin County	218.76
94-019-P4A	Rocky Point	Martin County	23.81
94-045-P4A	Stuart Beach Addition	Martin County	2.90
96-038-P7A	FIT Site	Martin County	54.42
98-045-P8A	Haney Creek	City of Stuart	73.53
99-022-P9A	Poppleton Creek Watershed	City of Stuart	24.73
00-011-P10	Santa Lucea	Martin County	10.40
01-081-FF1	Bonair Beach	Town of Jupiter Island	45.60
01-133-FF1	Delaplane Peninsula Blueway	Martin County Regional Land Trust	52.17
03-003-FF3	Bob Graham Beach Addition	Martin County	5.50
03-004-FF3	Jensen Beach	Martin County	94.30
03-092-FF3	Pal Mar East - Phase I	Martin County	692.22
04-046-FF4	Pal Mar East - Phase II	Martin County	830.55
08-047-FF8	Clifton S. Perry Beach	Martin County	16.50
<b>Miami-Dade County</b>			
91-001-P1A	Deering Estates Addition	Miami-Dade County	35.96
94-040-P4A	Village Green	Village of Key Biscayne	9.49
95-039-P56	Oleta River Corridor	Miami-Dade County	2.51
96-037-P7A	County Line Scrub	Miami-Dade County	15.02
95-021-P56	Hattie Bauer Hammock	Miami-Dade County	14.40
98-028-P8A	Spring Garden Point on the Miami River	Miami-Dade County/ City of Miami	1.20
98-046-P8A	Sunny Isles Beach Oceanfront Park	City of Sunny Isles Beach	1.87
98-023-P8A	Biscayne Coastal Wetlands	Miami-Dade County	424.45
00-022-P10	Tree Island Park	Miami-Dade County	120.00
00-053-P10	Pinecrest Parrot Jungle	City of Pinecrest	13.38
01-043-FF1	Deering Estate-Cutler Glade Rehydration Addition	Miami-Dade County	9.66
01-119-FF1	Boystown/Camp Matecumbe	Miami-Dade County	20.37
03-019-FF3	West Kendall District Park Addition	Miami-Dade County	12.15
05-042-FF5	C100/Bayfront Property (Haas)	Village of Palmetto Bay	3.57
06-025-FF6	Fern Isle Park Expansion	City of Miami	6.00
08-005-FF8	Doral North Park - Phase II	City of Doral	15.00
16-006-UA17	Hampton Lane	Village of Key Biscayne	0.19
16-007-UA17	Losner Park	City of Homestead	0.88
<b>Monroe County</b>			
91-041-P1A	Coco Plum Beach	Monroe County	6.03
93-001-CS1	Rate of Growth Controls	Monroe County	62.80
93-002-CS1	Recreational L.O.S. Standards	Monroe County	19.50
95-001-CS3	Recreation and Open Space Element	Monroe County	14.50
98-097-P8A	Berg Property	City of Key West	6.85
99-001-MCC	Monroe County Comprehensive Land Authority #1	Monroe County	0.02

Project #	Project Name	Recipient	Acres
<b>Monroe County (continued)</b>			
99-002-MCC	Monroe County Comprehensive Land Authority #2	Monroe County	19.70
99-003-MCC	Monroe County Comprehensive Land Authority #3	Monroe County	15.50
99-004-MCC	Monroe County Comprehensive Land Authority #4	Monroe County	0.90
99-005-MCC	Monroe County Comprehensive Land Authority #5	Monroe County	168.40
99-006-MCC	Monroe County Comprehensive Land Authority #6	Monroe County	74.10
99-007-MCC	Monroe County Comprehensive Land Authority #7	Monroe County	7.10
99-008-MCC	Monroe County Comprehensive Land Authority #8	Monroe County	10.30
99-009-MCC	Monroe County Comprehensive Land Authority #9	Monroe County	72.90
99-010-MCC	Monroe County Comprehensive Land Authority #10	Monroe County	20.20
99-011-MCC	Monroe County Comprehensive Land Authority #11	Monroe County	4.40
99-012-MCC	Monroe County Comprehensive Land Authority #12	Monroe County	4.50
99-013-MCC	Monroe County Comprehensive Land Authority #13	Monroe County	0.90
99-014-MCC	Monroe County Comprehensive Land Authority #14	Monroe County	3.20
99-015-MCC	Monroe County Comprehensive Land Authority #15	Monroe County	1.00
99-016-MCC	Monroe County Comprehensive Land Authority #16	Monroe County	16.30
99-017-MCC	Monroe County Comprehensive Land Authority #17	Monroe County	3.10
99-018-MCC	Monroe County Comprehensive Land Authority #18	Monroe County	3.10
99-019-MCC	Monroe County Comprehensive Land Authority #19	Monroe County	3.90
99-020-MCC	Monroe County Comprehensive Land Authority #20	Monroe County	17.50
99-021-MCC	Monroe County Comprehensive Land Authority #21	Monroe County	9.40
99-022-MCC	Monroe County Comprehensive Land Authority #22	Monroe County	5.90
99-023-MCC	Monroe County Comprehensive Land Authority #23	Monroe County	2.60
99-024-MCC	Monroe County Comprehensive Land Authority #24	Monroe County	6.85
01-001-CS7	Sunset Park (City of Key Colony Beach)	City of Key Colony Beach	0.55
01-002-CS7	Plantation Hammock Preserve	Islamorada, Village of Islands	9.50
01-002-CS7	Southwinds Park	Islamorada, Village of Islands	1.20
01-058-FF1	North Village Neighborhood Park	Islamorada, Village of Islands	3.63
03-034-FF3	Key West Tropical Forest and Botanical Garden Addition	City of Key West	4.74
05-009-FF5	Green Turtle Hammock	Islamorada, Village of Islands	8.74
04-001-FF4	Marathon Waterfront Park	City of Marathon	7.66
08-028-FF8	Key Tree Cactus	Islamorada, Village of Islands	9.05
<b>Nassau County</b>			
92-011-P2A	North Beach Park	City of Fernandina Beach	0.80
95-018-P56	Seaside Park	City of Fernandina Beach	2.66
95-059-P56	Egans Creek Greenway - Phase I	City of Fernandina Beach	126.18
96-013-P7A	Egans Creek Greenway - Phase II	City of Fernandina Beach	111.98
01-025-FF1	Egans Creek Greenway - Phase III	City of Fernandina Beach	36.56



Project #	Project Name	Recipient	Acres
<b>Nassau County (continued)</b>			
03-041-FF3	Goffinsville - Nassau River Park	Nassau County	19.70
04-026-FF4	American Beach Historic Park	Nassau County	1.20
04-026-FF4	American Beach Historic Park - Nelson Parcels	Nassau County	0.31
<b>Okaloosa County</b>			
94-014-P4A	Turkey Creekwalk - Barnett	City of Niceville	7.09
96-004-P7A	Oak Tree Park	City of Mary Esther	13.85
98-020-P8A	Okaloosa Island Marler Park	Okaloosa County	2.20
00-004-P10	Oak Tree Nature Park - Phase II	City of Mary Esther	11.30
00-067-P10	Miracle Strip Park on the Sound	City of Fort Walton Beach	2.42
04-006-FF4	The Shore at Crystal Beach	City of Destin	0.65
08-007-FF8	Captain Royal Melvin Park	City of Destin	0.77
11-015-FF11	Turkey Creek Walk Park - Phase IV - Ruckel	City of Niceville	67.02
11-015-FF11	Turkey Creek Walk Park - Phase IV - Neal	City of Niceville	1.44
11-015-FF11	Turkey Creek Walk Park - Phase IV - Safe Mini Storage	City of Niceville	8.61
18-001-FF19	Turkey Creek Walk Park - Phase V - Hardees Site	City of Niceville	11.17
<b>Okeechobee County</b>			
<b>Orange County</b>			
93-009-P3A	Airport Lakes Park	City of Orlando	56.37
92-010-P2A	Kelly Park Expansion	Orange County	39.90
95-053-P56	Minnehaha Park Canal	City of Maitland	1.88
96-031-P7A	Oakland Community Nature Park	Town of Oakland	92.55
01-029-FF1	Eagle Nest Cornerstone Park	City of Orlando	100.00
01-056-FF1	Kelly Park Addition	Orange County	109.39
01-083-FF1	Parcel 105	Orange County	1,133.10
01-053-FF1	Orange County Natural Resource Center	Orange County	399.63
03-002-FF3	Ft. Christmas Community Park Addition	Orange County	116.92
04-051-FF4	Howell Branch Preserve - Phase II	City of Winter Park	10.50
11-012-FF11	Tucker Ranch Heritage Park	City of Winter Garden	208.96
11-014-FF11	Kelly Park 3rd Addition - Camp Joy Property	Orange County	33.75
<b>Orange/Osceola Counties</b>			
91-009-P1A	Split Oak Mitigation Park	Orange County/ Osceola County	1,689.00
<b>Osceola County</b>			
95-011-P56	Lake Lizzie Recreation Park	Osceola County	918.70
98-065-P8A	Shingle Creek Recreational Preserve	Osceola County/City of Kissimmee	73.24
01-143-FF1	Shingle Creek Recreational Preserve North	Osceola County	159.76
03-029-FF3	Shingle Creek	Osceola County	40.45
03-030-FF3	Lake Tohopekaliga Park and Marina	Osceola County	12.00
06-015-FF6	Shingle Creek Recreational Preserve Center	Osceola County/City of Kissimmee	16.14
<b>Palm Beach County</b>			
91-022-P1A	Seacrest Scrub	Palm Beach County/ City of Boynton Beach	53.70
92-020-P2A	Osborne Site	City of Boca Raton	24.15
92-022-P2A	Olympia York/Serenoa Glades	City of Boca Raton	114.60
92-024-P2A	Section 16 Addition	City of West Palm Beach	318.77
93-008-P3A	Rosemary Scrub	Palm Beach County/ City of Boynton Beach	13.59

Project #	Project Name	Recipient	Acres
<b>Palm Beach County (continued)</b>			
93-015-P3A	Section 10 Addition	City of West Palm Beach	591.22
93-017-P3A	South Bay Park	City of South Bay	19.35
93-020-P3A	Hidden Valley North/Rosemary Ridge Preserve	City of Boca Raton	6.29
94-005-P4A	Delray Oaks	Palm Beach County/ City of Delray Beach	24.58
94-021-P4A	Section 15 Addition	City of West Palm Beach	209.10
95-007-P56	Sandoway House	City of Delray Beach/Palm Beach County	0.36
95-046-P56	Juno Hills Oceanfront	Town of Juno Beach/ Palm Beach County	42.43
96-011-P7A	Frenchman's Forest	Palm Beach County/ City of Palm Beach Gardens	149.09
98-066-P8A	Hungryland Slough Tract - Bee Line Corridor Natural Area	Palm Beach County	734.00
98-067-P8A	Bee Line Corridor Natural Area	Palm Beach County	1,806.73
99-015-P9A	High Ridge Scrub Addition	Palm Beach County	12.76
99-028-P9A	Bee Line Corridor - Phase II	Palm Beach County	918.88
00-029-P10	Harbor View Park	Town of Jupiter	1.50
01-016-FF1	Section 16 West Addition to the West Palm Beach Preserve	City of West Palm Beach	271.18
01-033-FF1	North Jupiter Flatwoods	Palm Beach County/ Town of Jupiter	132.54
01-035-FF1	Overlook Scrub	Palm Beach County/ Town of Hypoluxo	92.17
01-036-FF1	Lake Park Scrub Natural Area	Palm Beach County/ Town of Lake Park	50.20
01-037-FF1	Acreage Pines Natural Area	Palm Beach County	125.37
01-100-FF1	Ombres Property	City of West Palm Beach	3.75
02-051-FF2	Blue Lake Scrub	Palm Beach County/ City of Boca Raton	78.70
02-100-FF2	Limestone Creek	Palm Beach County	22.06
03-105-FF3	Cypress Creek Natural Area	Palm Beach County	598.76
04-023-FF4	Jaycee Park Acquisition	City of Boynton Beach	5.42
04-049-FF4	Cypress Creek Natural Area	Palm Beach County	426.87
04-062-FF4	Old School Square Addition	City of Delray Beach	1.09
05-028-FF5	Indian Lakes Natural Area	Palm Beach County	609.82
06-017-FF6	Delaware Scrub Natural Area	Town of Jupiter/ Palm Beach County	15.80
06-041-FF6	Susan DuBois Kindt Estate	Palm Beach County	1.18
07-010-FF7	Cypress Creek Preserve - Phase III	Palm Beach County	150.00
08-001-FF8	Cypress Creek Natural Area - Phase IV	Palm Beach County	251.23
11-001-FF11	Cypress Creek Natural Area - Phase V	Palm Beach County	160.00
<b>Pasco County</b>			
91-039-P1A	Boyce/Wetstone	Pasco County	1,685.00
94-007-P4A	Pithlachascotee River Park	City of New Port Richey	83.50
95-067-P56	Port Richey Waterfront Park	City of Port Richey	7.66
04-014-FF4	Strauber Memorial Highway Coastal Park	Pasco County	598.03
07-089-FF7	Upper Pithlachascotee River Preserve	Pasco County	122.59
08-039-FF8	Pasco Palms	Pasco County	115.32
11-047-FF11	Morsani Ranch	Pasco County	598.63
<b>Pinellas County</b>			
91-002-P1A	North Anclote	City of Tarpon Springs	56.50
92-007-P2A	Brooker Creek	Pinellas County	223.49
93-023-P3A	Redington Shores Nature Refuge	Town of Redington Shores	1.77
94-004-P4A	Brooker Creek Enhancements	Pinellas County	86.20
94-010-P4A	Waterfront Park	City of Gulfport	1.43

Project #	Project Name	Recipient	Acres
<b>Pinellas County (continued)</b>			
94-011-P4A	Indian Shores Nature Refuge	Town of Indian Shores	3.93
94-017-P4A	Bayside Park	City of Belleair Beach	1.75
95-001-P56	South Pasadena Habitat Extension	City of South Pasadena	2.91
95-004-P56	Marina Park Addition	City of Safety Harbor	3.55
95-022-P56	Indian Rocks Beach Nature Preserve	City of Indian Rocks Beach	8.80
96-026-P7A	McKay Creek Greenway	Pinellas County	54.94
98-005-P8A	Mobbly Bayou Wilderness Preserve	City of Oldsmar	77.00
99-007-P9A	Sunset Vista Trailhead	City of Treasure Island	1.49
99-024-P9A	Madeira Beach Causeway	City of Madeira Beach	1.56
00-026-P10	Mobbly Bayou	City of Oldsmar/Pinellas County	13.50
00-042-P10	Clam Bayou Park Expansion	City of St. Petersburg	8.13
01-015-FF1	Kapok Wetland and Floodplain Restoration	City of Clearwater	36.69
01-022-FF1	Wall Springs	Pinellas County	32.07
01-144-FF1	Historic Bayview	City of Clearwater	4.41
02-035-FF2	Wall Springs Coastal Addition II	Pinellas County	84.37
03-006-FF3	Brooker Creek Preserve	Pinellas County	259.43
03-080-FF3	Mobbly Bayou Preserve	City of Oldsmar/Pinellas County	4.61
04-021-FF4	Kumar Property	City of Oldsmar	5.52
05-017-FF5	Wall Springs Coastal Addition	Pinellas County	4.08
07-097-FF7	Weaver Park	City of Dunedin	12.69
07-054-FF7	Lake Chautauqua Equestrian and Nature Trail	City of Clearwater	26.98
07-097-FF7	Weaver Park - Colonial Park Parcel	City of Dunedin	1.91
08-009-FF8	Wall Springs Coastal Addition IV	Pinellas County	7.12
11-020-FF11	Brooker Creek Preserve Wilde Lands	Pinellas County	439.93
16-004-UA17	Hammock Park Expansion	City of Dunedin	8.70

<b>Polk County</b>			
92-002-P2A	Lake Bonny Community Park	City of Lakeland	111.00
92-006-P2A	Lake Howard	City of Winter Haven	13.30
95-028-P56	Mount Pisgah - Peace River	Polk County	41.96
96-001-CS4	Green Swamp Greenway - Phase II	Polk County	591.95
99-049-P9A	Lakeland Highlands Scrub	Polk County	551.09
04-033-FF4	Lake Hartridge Nature Park	City of Winter Haven	6.72
04-075-FF4	MacKay Garden and Lakeside Preserve	City of Lake Alfred	112.28
05-008-FF5	Bok Tower Sanctuary	Green Horizon Land Trust, Inc.	219.96
06-020-FF6	Gator Creek Preserve	Polk County	1,621.92
05-008-FF5	Bok Tower Sanctuary - Marks Parcel	Green Horizon Land Trust, Inc.	8.98
05-008-FF5	Bok Tower Sanctuary - Moore, Yoars and Pease Parcel	Green Horizon Land Trust, Inc.	8.90
05-008-FF5	Bok Tower Sanctuary - SR Estate/Colburn Parcels	Green Horizon Land Trust, Inc.	9.02
05-008-FF5	Bok Tower Sanctuary - Story Parcel	Green Horizon Land Trust, Inc.	9.04

<b>Putnam County</b>			
01-136-FF1	Melrose Heritage Park	Putnam County	2.07
01-137-FF1	Tanglewyde Center	Putnam County	25.00
08-020-FF8	Georgetown Riverside Park	Putnam County	25.28
08-084-FF8	Nine Mile Swamp Park and Trail	Putnam County/Putnam Land Conservancy	1,238.00

<b>Santa Rosa County</b>			
94-012-P4A	Riverwalk Expansion	City of Milton	10.88
00-082-P10	Russell Harber Landing Expansion	City of Milton	3.51

Project #	Project Name	Recipient	Acres
<b>Sarasota County</b>			
92-009-P2A	Myakkahatchee Creek Environmental Park	City of North Port	34.68
93-003-P3A	Myakkahatchee Creek Environmental Park III	City of North Port	56.21
94-025-P4A	Myakkahatchee Creek Environmental Park	City of North Port	4.94
96-041-P7A	Hog Creek Habitat Restoration	City of Sarasota	0.99
98-072-P8A	Oak Shores Reclamation	Sarasota County	7.14
99-076-P9A	Lemon Bay Preserve	Sarasota County	20.32
99-077-P9A	North River Road Preserve	Sarasota County	213.41
00-019-P10	Manasota Scrub Preserve	Sarasota County	108.40
01-008-FF1	Pocono Trails Preserve	Sarasota County	8.00
01-045-FF1	Venice Gulf View Park	City of Venice	0.90
01-028-FF1	Curry Creek Preserve	Sarasota County	80.40
02-027-FF2	Red Bug Slough	Sarasota County	72.10
02-034-FF2	Wilson Family Park	Sarasota County	49.71
05-018-FF5	Bay Preserve at Osprey	Sarasota Conservation Foundation	4.39
05-012-FF5	Lemon Bay Park Addition	Sarasota County	10.65
05-014-FF5	Sleeping Turtles	Sarasota County	211.23
06-004-FF6	Blackburn Point Park Addition	Sarasota County	10.89
08-024-FF8	Legacy Park	City of Venice	10.34

<b>Seminole County</b>			
95-020-P56	Twin Rivers II Preserve	City of Oviedo	34.37
03-055-FF3	Jetta Point Property/Rolling Hills	Seminole County	42.43
03-088-FF3	Winter Miles	City of Oviedo	151.67
06-008-FF6	St. Johns Historic Property (Lansing Property)	Seminole County	77.04
16-008-UA17	Round Lake Park Addition	City of Oviedo	0.50

<b>St. Johns County</b>			
98-003-P8A	Southeast Intracoastal Waterway Park	St. Johns County	82.85
99-002-P9A	St. Johns River Park	St. Johns County	54.83
01-009-FF1	Moultrie Creek/Intracoastal Tract	St. Johns County	23.00
03-038-FF3	Ft. Mose Historic State Park Addition	St. Johns County	7.29
04-064-FF4	Canopy Shores	St. Johns County	33.70
05-032-FF5	Nease Beachfront Park	St. Johns County	3.21
05-034-FF5	Beluthahatchee Park	St. Johns County	0.59
05-034-FF5	Beluthahatchee Park	St. Johns County	1.38
06-033-FF6	Mussallem Beachfront Park	St. Johns County	8.33
06-034-FF6	Vilano Beach Park	St. Johns County	1.81
08-018-FF8	Ocean Hammock Park	City of St. Augustine Beach	11.43
08-019-FF8	Usina Intracoastal Park	St. Johns County	1.51
08-044-FF8	Cora C. Harrison	Town of Hastings	7.92
08-044-FF8	Cora C. Harrison	Town of Hastings	5.69
16-014-UA17	Ocean Hammock Park	City of St. Augustine Beach	10.61

<b>St. Lucie County</b>			
93-024-P3A	Bear Point Sanctuary	St. Lucie County	13.33
94-003-P4A	Kings Island Preserve	St. Lucie County	169.65
94-022-P4A	Ocean Bay	St. Lucie County	26.47
95-031-P56	Brinkhaven at Oak Hammock Acres	City of Port St. Lucie	12.81
95-052-P56	Indrio North Savannas	St. Lucie County	219.93
95-062-P56	Walton Scrub Homestead	St. Lucie County/City of Port St. Lucie	33.48
95-065-P56	Middle Cove Park	St. Lucie County	107.42
96-017-P7A	St. Lucie Pinelands	St. Lucie County	746.38
98-071-P8A	Bluefield Ranch	St. Lucie County	3,284.56
99-001-P9A	Pepper Park	St. Lucie County	73.39
99-020-P9A	Paleo Hammock	St. Lucie County	80.52
99-025-P9A	North Fork Addition	St. Lucie County	14.92
01-023-FF1	Westmoreland River Park	City of Port St. Lucie/St. Lucie County	31.79
01-067-FF1	Sheraton Plaza Preserve	St. Lucie County	65.12
01-069-FF1	Indrio Scrub Preserve	St. Lucie County	13.34

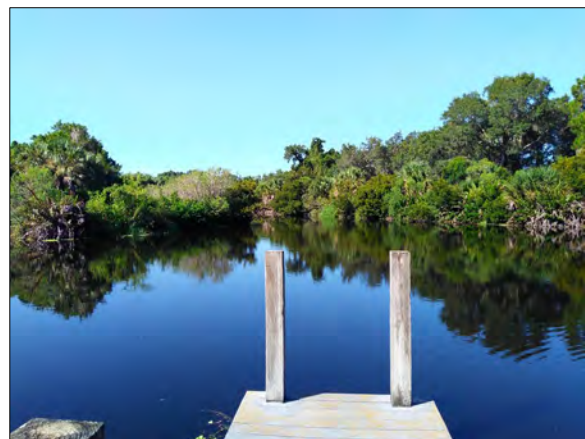


Project #	Project Name	Recipient	Acres
<b>St. Lucie County (continued)</b>			
01-075-FF1	Ancient Oaks	St. Lucie County	145.18
01-082-FF1	St. Lucie Village Heritage Park	Town of St. Lucie Village	75.81
01-098-FF1	North Fork of the St. Lucie River - Phase II	St. Lucie County	34.69
02-056-FF2	Ten Mile Creek East	St. Lucie County	98.80
02-071-FF2	North Fork of the St. Lucie River - Phase III	St. Lucie County	60.70
02-091-FF2	Indrio Blueway Buffer	St. Lucie County	105.60
03-069-FF3	Capron Trail Park	St. Lucie County	120.01
04-044-FF4	Paleo Hammock Addition	St. Lucie County	350.18
03-079-FF3	Ten Mile Creek West	St. Lucie County	8.54
05-069-FF5	Hackberry Hammock	St. Lucie County	15.00
06-060-FF6	Indrio North Savannahs Two	St. Lucie County	8.63
05-069-FF5	Hackberry Hammock	St. Lucie County	20.01
04-045-FF4	Heathcote Botanical Park - City Parcels	St. Lucie County	63.68
04-045-FF4	Heathcote Botanical Park - Stewart Parcel	St. Lucie County	0.13
07-088-FF7	Moore's Creek Linear Park	City of Fort Pierce	5.04
07-080-FF7	Jetty Oceanfront Park Expansion	City of Fort Pierce	1.62
07-027-FF7	Harbor Branch Preserve	St. Lucie County	248.78
08-057-FF8	Becker Preserve	St. Lucie County	12.36
11-054-FF11	Petravice Preserve (North Fork St. Lucie River Phase Four)	St. Lucie County	24.25
16-012-UA17	Myers Stickel Property	St. Lucie County	24.25
16-013-UA17	Cypress Creek Preserve	St. Lucie County	783.41
18-017-FF19	North Fork II Addition (Zorc Parcels)	St. Lucie County	18.00
<b>Sumter County</b>			
93-010-P3A	Lake Panasoffkee Headwaters	Sumter County	157.80
<b>Suwannee County</b>			
92-030-P2A	Little River Springs	Suwannee County	124.82
08-066-FF8	Live Oak Heritage Park	City of Live Oak	73.96
08-066-FF8	Live Oak Heritage Park - CSX Parcel	City of Live Oak	29.86
<b>Taylor County</b>			
07-051-FF7	Keaton Beach Coastal Park	Taylor County	43.45
<b>Union County</b>			

Project #	Project Name	Recipient	Acres
<b>Volusia County</b>			
91-042-P1A	Lake Beresford	Volusia County	200.00
91-043-P1A	Colby/Alderman	Volusia County	108.00
92-023-P2A	Indian River Lagoon Preserve	City of New Smyrna Beach	73.93
93-021-P3A	Gemini Springs	Volusia County	208.56
94-033-P4A	Ponce Preserve	Town of Ponce Inlet	39.04
94-038-P4A	Boy Scouts Property	City of DeLand	4.72
95-024-P56	Painters Pond	City of DeLand	1.13
96-039-P7A	Green Springs	Volusia County	47.38
98-010-P8A	North Peninsula In-holdings	Volusia County	27.13
98-036-P8A	Lake Helen Greenway	City of Lake Helen	17.35
98-112-P8A	North Beach Community Park	City of New Smyrna Beach	13.97
01-032-FF1	Daytona Beach Historic Pier and Boardwalk	City of Daytona Beach	1.95
01-071-FF1	Doris Leeper Spruce Creek	Volusia County	80.10
01-129-FF1	Town Center	City of Port Orange	0.91
02-003-FF2	Catholic Diocese Tract	Volusia County	150.00
02-094-FF2	Town Center Marcantonio Property	City of Port Orange	0.73
03-064-FF3	Ponce Preserve Inlet	Town of Ponce Inlet	3.24
04-005-FF4	Doris Leeper Spruce Creek - Phase II	Volusia County	61.20
04-060-FF4	Timucuan Oaks Botanical Gardens	Town of Ponce Inlet	8.08
04-018-FF4	Russell Property	City of Port Orange	18.00
07-020-FF7	Esther Street Beachfront Park	City of New Smyrna Beach	2.49
08-004-FF8	Stanaki Property	City of Port Orange	224.29
18-021-FF19	Turnbull Creek Watershed Preservation	City of New Smyrna Beach	145.03
<b>Wakulla County</b>			
93-029-P3A	Shell Point Beach	Wakulla County	2.75
94-041-P4A	Purify Creek Acquisition Project	Wakulla County	447.97
98-110-P8A	Panacea Mineral Springs	Wakulla County	4.45
07-057-FF7	Big Bend Maritime Center	Wakulla County	5.31
<b>Walton County</b>			
02-099-FF2	Garfield Access Addition	Walton County	0.92
03-001-FF3	Stallworth Lake Preserve	Walton County	2.87
08-006-FF8	Town Center Park and Preserve	Walton County	6.58
16-015-UA17	City Center Barrier Free Park	City of Freeport	4.02
<b>Washington County</b>			
96-034-P7A	Holmes Creek Boat Ramp	Washington County	12.05



June 2019



August 2020

Lemon Bay Preserve (99-076-P9A), Sarasota County

These photos are one example of the outstanding habitat restoration work that FCT grant recipients are accomplishing on FCT project sites.

The "before" photo shows the Duquesne Pond in Lemon Bay Preserve being literally choked by exotic plants.

The "after" photo clearly demonstrates the effectiveness of Sarasota County's treatment plan.

# FISCAL YEAR 2020-21

## FLORIDA FOREVER PROGRAM – FIXED CAPITAL OUTLAY BUDGET

06/30/2020 Year-End Balance – FCT, Parks and Open Space	\$ 13,226,391.81
06/30/2020 Year-End Balance – Stan Mayfield Working Waterfronts	\$ 4,313,764.91
<b>06/30/2020 YEAR END BALANCE</b>	<b>\$ 17,540,156.72</b>
 <u>FY 2020-21 Appropriations:</u>	
FY 20/21 Parks and Open Space	\$ 10,000,000.00
FY 20/21 Stan Mayfield Working Waterfronts	\$ 2,000,000.00
Total Appropriation, including fiscal year-end balance	<b>\$ 29,540,156.72</b>
 <u>Expenditures During FY 2020-21</u>	
Expenditures for Land Acquisition Activities (Parks and Open Space)	\$ (5,916,778.00)
Expenditures for Land Acquisition Activities (Stan Mayfield Working Waterfronts)	\$ (8,685.00)
<b>LESS 2020-2021 EXPENDITURES</b>	<b>\$ (5,925,463.00)</b>
 <b>6/30/2021 YEAR END BALANCE</b>	 <b>\$ 23,614,693.72</b>

## FLORIDA COMMUNITIES TRUST PROGRAM (FCT) – OPERATING BUDGET

FCT is funded from the Land and Recreation Program within DEP

### **Total Cost of FCT Operations during FY 2020-21**

Salaries and Benefits	\$ 353,687.25
Other Personal Services/Contracted Services (temporary staff/services)	\$ 3,968.73
Expenses	\$ 3,369.28
**Indirect Costs	\$ 179,071.85
<b>TOTAL</b>	<b>\$ 540,097.11</b>

\*\*The Indirect Cost amount is calculated by taking FCT's total salaries and benefits multiplied by the FY 2020-21 indirect cost rate assigned to Land and Recreation. This calculation provides an estimate of the indirect costs (overhead, administrative costs) associated with the program.



# FLORIDA COMMUNITIES TRUST GOVERNING BOARD

## Callie DeHaven



Callie DeHaven is a fifth-generation Floridian whose passion for conserving Florida's historic and natural landscapes led to her dedicating more than two decades to conservation planning, land acquisition and land stewardship. She currently leads DEP's Division of State Lands, Florida's team of dedicated public land stewards and real estate specialists. Before returning to DEP, she spent seven years in the private sector implementing an accelerated conservation land sales program for a timberland landowner. Prior to that, DeHaven was the Public Lands Protection Manager for The Nature Conservancy, where she served as the primary negotiator for the acquisition of environmentally sensitive land in Florida's Panhandle. Earlier in her career, she served the public as a Planning Manager in the Division of State Lands. She was the principal liaison between the department and other state agencies in the development of Conservation and Recreation Lands, Preservation 2000 and Florida Forever projects. Callie serves as Chair of the FCT Board.

## Gregory Jones



Gregory Jones, of Tampa, has over 20 years of experience in resort development and management in the State of Florida. He is the Tampa Division Manager for ICI Homes. Previously, he was a Senior Project Manager for WCI Communities. Jones has volunteered his time on the Escambia County Tourism Development Council and West End Advisory Board. Gregory serves on the FCT Board as a representative of the development industry.

## Deborah Denys



Deborah Denys, of New Smyrna Beach, is a former member of the Volusia County Council. Previously, she served as Chair of the Early Learning Coalition of Flagler and Volusia Counties and as a Volusia County School Board member. Denys has volunteered her time with the Indian River Lagoon Council, River to Sea Transportation Planning Organization and the Central Florida Metropolitan Planning Organization. She earned her bachelor's degree in business management from the University of Phoenix. Deborah serves on the FCT Board as the former elected official of a county government.

## Frank Mingo



Frank Mingo, of Miami Lakes, is a real estate broker at All Out Realty. Previously, he was an executive with the Oliva Cigar Company and Vice Mayor of the Town of Miami Lakes where he served on the Economic Development Committee. Frank serves as the former elected official of a metropolitan municipal government on the FCT Board.



## **FLORIDA COMMUNITIES TRUST**

**Florida Department of Environmental Protection**

**3900 Commonwealth Boulevard, MS 115**

**Tallahassee, Florida 323299-3000**

**850-245-2501**

**[FloridaCommunitiesTrust@FloridaDEP.gov](mailto:FloridaCommunitiesTrust@FloridaDEP.gov)**

**[FloridaDEP.gov/grants](http://FloridaDEP.gov/grants)**