



# **FLORIDA COMMUNITIES TRUST**

## **ANNUAL REPORT**

### **FISCAL YEAR 2019-2020**

**September 30, 2020**

**Land and Recreation Grants Section**  
**Division of State Lands**  
**Florida Department of Environmental Protection**



[www.floridadep.gov/lands/land-and-recreation-grants/content/fct-florida-communities-trust-home](http://www.floridadep.gov/lands/land-and-recreation-grants/content/fct-florida-communities-trust-home)



Florida Communities Trust  
 3900 Commonwealth Boulevard, MS 115  
 Tallahassee, Florida 32399-3000  
 (850) 245-2501  
[www.FloridaDEP.gov](http://www.FloridaDEP.gov)



**TABLE OF CONTENTS**

TABLE OF CONTENTS .....iii

LETTER FROM THE CHAIR..... 1

PROJECT LOCATION MAP ..... 2

EXECUTIVE SUMMARY ..... 3

PARKS AND OPEN SPACE PROGRAM ..... 6

    ACQUIRING CONSERVATION LANDS ..... 7

    PROVIDING URBAN OPEN SPACES ..... 8

    ACQUIRING LAND FOR PARKS ..... 9

    PROVIDING GREENWAYS ..... 10

FISCAL YEAR 2018-2019 PARKS AND OPEN SPACE GRANT APPLICATION CYCLE ..... 11

FLORIDA COMMUNITIES TRUST POST-COMPLETION WORKSHOPS ..... 17

FISCAL YEAR 2019-2020 STAN MAYFIELD WORKING WATERFRONTS  
 GRANT APPLICATION CYCLE ..... 18

SITE VISITS ..... 19

CLOSINGS AND REIMBURSEMENTS ..... 23

ACQUIRED PROJECTS BY COUNTY 1991-2020..... 25

SUMMARY OF FINANCIAL ACTIVITIES ..... 33

FLORIDA COMMUNITIES TRUST BOARD MEMBERS..... 34

*Front Cover Photo: Purify Creek, 94-041-P4A, Wakulla County*

*Back Cover Photo: Bayshore Live Oak Park, 01-018-FF1 / 05-020-FF5, Charlotte County*



# FLORIDA DEPARTMENT OF Environmental Protection

Marjory Stoneman Douglas Building  
3900 Commonwealth Boulevard  
Tallahassee, FL 32399

**Ron DeSantis**  
Governor

**Jeanette Nuñez**  
Lt. Governor

**Noah Valenstein**  
Secretary

September 30, 2020

Florida Communities Trust  
Letter from the Chair

Dear Floridians,

For more than a quarter century, the Florida Communities Trust (FCT) has established a rich legacy of partnership and preservation marked by a diverse array of parks, greenways, urban green spaces, public beach access points, wildlife habitats and working waterfronts. As perpetual stewards of over 500 project sites throughout Florida, FCT works to continually enhance local communities and recreational access for Floridians.

Over the past year, FCT has continued to assist local stakeholders with acquisitions and land management efforts to safeguard Florida's fragile ecosystems, conserve natural resources, and foster multi-use passive recreation activities such as hiking, wildlife viewing, nature study and equestrian trail riding for surrounding communities.

The FCT complements many grant programs administered by the Florida Department of Environmental Protection, including the Florida Recreation Development Assistance Program, Land and Water Conservation Fund Program and Recreational Trails Program. These grant programs help local communities leverage their resources and build interconnected community parks, trails and preserves to better serve our citizens.

Please take a moment to review this report and learn how the FCT continues to strengthen our communities.

Sincerely,

A handwritten signature in blue ink, appearing to read "Emile D. Hamilton".

Emile D. Hamilton  
Chair, Florida Communities Trust Governing Board  
Interim Deputy Secretary for Land and Recreation

# FCT PARKS AND OPEN SPACE PROGRAM 1990-2020 PROJECTS



# EXECUTIVE SUMMARY

## ABOUT THE FLORIDA COMMUNITIES TRUST

The Florida Communities Trust (FCT) is a state funded land acquisition program housed within the Florida Department of Environmental Protection's (DEP) Division of State Lands. FCT was developed pursuant to the Florida Forever Act, Section 259.105, Florida Statutes (F.S.), and the statutory authority in Chapter 380, Part III, F.S. It is governed by Rule Chapters 62-815 through 62-821, Florida Administrative Code (F.A.C.). FCT assists communities in protecting natural resources, providing recreational opportunities and preserving Florida's traditional working waterfronts through the competitive criteria outlined in the Parks and Open Space Florida Forever Grant Program and the Stan Mayfield Working Waterfronts Florida Forever Grant Program. These programs provide funding to local governments and eligible nonprofit organizations to acquire land for parks, open space, greenways and projects supporting Florida's seafood harvesting and aquaculture industries. FCT is funded through proceeds from Florida Forever. Partial and full grants for land acquisition projects are provided to communities through a competitive application cycle.



*Key West Botanical Garden, Key West*

FCT is governed by a five-member board with DEP's Deputy Secretary for Land and Recreation serving as chair. Also serving are four members of the public appointed by the Governor subject to confirmation by the Florida Senate. By statute, appointees must include a former elected official of a metropolitan municipality, a former elected official of a county, a representative of a nonprofit organization that has among its principal goals the conservation of natural resources or protection of the environment, and a representative of the development industry.

The FCT Annual Report is a summary of the program activities occurring during FY 2019-20. The Annual Report is prepared in accordance with Section 380.510, F.S., which identifies the report requirements. The

Annual Report includes a financial summary, overview of administrative operations and accomplishments of the programs. It summarizes the creation of recreational opportunities, ensuring public access to our beautiful beaches, protecting our historical and cultural resources, preserving Florida's commercial fishing heritage and traditional working waterfronts, and providing clean air and drinking water essential to creating livable communities. Through the Parks and Open Space and Stan Mayfield Working Waterfronts Florida Forever Grant Programs, FCT has helped meet the needs of Florida's communities and plays a significant role in ensuring that Florida continues to be a great place to live, work and visit for many years to come.

## SUPPORTING THE MISSION OF THE DEPARTMENT

FCT serves as an essential component of the DEP's mission to protect, conserve and manage the state's natural resources and enforce its environmental laws. The cornerstone of Florida's growth management law is the local government comprehensive plan, which serves as a blueprint for successfully managing



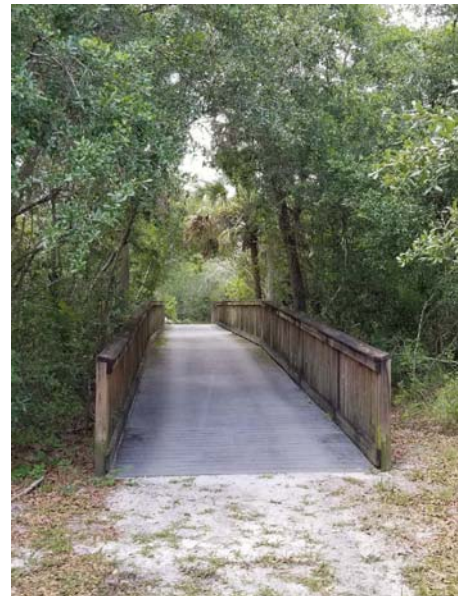
*Blue Creek Ravine, Alachua County*

acquisition growth and land management. FCT supports DEP's values by serving as an example of how to protect natural resources and economic vitality while adhering to the integrity of this shared vision. FCT helps local governments implement their comprehensive plans through the acquisition of land, utilizing funds from the Florida Forever program. FCT is non-regulatory entity and promotes innovative solutions to the challenges inherent in the comprehensive planning process.

## FLORIDA FOREVER FUNDING

Florida Forever is an environmental land acquisition program that encompasses a wide range of goals, including restoration of damaged environmental systems, implementation of local comprehensive plans, increased public access, and public lands management and maintenance. Acquisitions in this program provide a host of ecosystem benefits including water quality, habitat and species protection, and outdoor recreation. Through cooperative partnerships, the Florida Forever program continues to serve as the state's blueprint for conserving natural resources.

Under Florida Forever, FCT awards grants to local governments and nonprofit environmental organizations through a competitive application cycle to help purchase land for parks, greenways and open spaces to further local comprehensive plans. FCT staff provide technical assistance in numerous areas, including application development, functional support for management plans and as project liaisons with federal, state and local entities. Additionally, staff assists in the negotiation and acquisition process during purchases.



*Tippecanoe Scrub, Pasco County*

The Parks and Open Space Florida Forever Grant Program requires local governments to provide a minimum 25 percent match, with the exception of small local governments. FCT awards 100 percent grants to small local governments, which are defined as municipalities with a population less than 10,000 and counties with a population less than 75,000. The Stan Mayfield Working Waterfronts Florida Forever Grant Program does not require a match but does award extra points to an application if 25 percent or more match is provided. Nonprofit environmental organizations are not required to provide matching funds.



*Depot Park, City of Gainesville*

## THE YEAR IN REVIEW

For FY 2019-20, the Florida Legislature appropriated \$1.5 million in funding for the Stan Mayfield Working Waterfronts Grant Program. FCT continues to ensure that matching requirements are met throughout the selection, evaluation and closing processes.

The Florida Communities Trust Governing Board met on March 26, 2019, to select the FCT projects for funding. Six projects were approved to utilize \$10 million in allocated funding for acquisition and an additional 10 projects were ranked for contingent funding.

## RESULTS



*Venice Gulf View Park, City of Venice*

One of the rewarding aspects of FCT is that as a state funded grant program, local communities are able to acquire land for recreation, conservation and working waterfront designations. This allows for a unique partnership with local communities and businesses which works to protect natural resources and promote economic growth. Subsequently, community stakeholders further their investments in local communities to safeguard Florida's natural resources and enhance its ecosystems. Each grant recipient is responsible for land stewardship and full implementation of a formal management plan that is approved by FCT. This results in the improved quality of natural resources through long-term planning, restoration and maintenance.

FCT staff continuously work to focus taxpayer resources on projects that provide a direct benefit to the environment and local communities. FCT creates a unique opportunity for stakeholders to leverage local dollars with state dollars, optimizing conservation benefits. Along with DEP's Division of State Lands, FCT staff looks forward to continuing this legacy under the Florida Forever program.

## LOOKING TO THE FUTURE

Under the leadership of Governor Ron DeSantis, a commitment in funding toward Florida's prized properties and waterbodies will ensure additional protections for its unique, natural resources. As land acquisition is vital to both our economic growth and environmental protection, the FCT FY 2020-21 budget was approved at \$10 million with an additional \$2 million for the Stan Mayfield Working Waterfronts Florida Forever Grant Program. The coming year presents an exciting opportunity for FCT as we proceed with application cycles for both programs. FCT staff is committed to providing greater technical assistance and continuing collaborative partnerships with local stakeholders.



*Cypress Creek Nature Preserve, Hillsborough County*

Moving into the coming year, FCT staff will strive to enhance relationships with local communities, develop new partnerships and thereby increase the ability to preserve lands for Florida's future generations. Through these efforts we will continue to encourage wise land management practices and assure all community responsibilities are met at each FCT-funded project site, helping to preserve more land for Florida's future parks, open spaces and working waterfronts.



# PARKS AND OPEN SPACE PROGRAM

The Parks and Open Space Florida Forever Grant Program aids local communities in meeting the challenges of growth, supporting viable community development and protecting natural resources and open spaces. The program is governed by Chapter 380, Part III, F.S. FCT is dedicated to working with communities across the state to acquire lands for recreation, open space and working waterfronts.

The acquisition of urban open space and greenways links the quality of life, environmental quality, as well as the viability and vitality of the urban areas of this state. The preservation of unique natural spaces in the urban areas of this state are necessary to link local populations with Florida's natural heritage. FCT works with grant recipients to foster responsible stewardship of those lands once acquired.

FCT helps local communities further the goals of land use plans through land acquisition and innovative, non-regulatory solutions to the challenges inherent in the land planning process.

Once a project has been acquired by the grant recipient, FCT stewardship continues in perpetuity through a formal agreement to provide guidance on development and management oversight. This is accomplished through annual stewardship reporting and site visits.

Projects funded by FCT provide land for recreational opportunities to enhance the health and well-being of the residents of this state. The majority of FCT's projects meet one or more of these objectives to implement local government comprehensive plans:

- Conservation lands;
- Urban open spaces;
- Parks; and
- Greenways

What follows are examples of each of these four objectives. Each of these park sites is a fully-developed site originally acquired with FCT Parks and Open Space grant assistance.



*Hampton Lane, Village of Key Biscayne*



*Westmoreland Botanical Gardens, City of Port St. Lucie*

# Acquiring Conservation Lands

**Prairie Creek Basin**  
**Alachua Conservation Trust**  
**FCT# 06-096-FF6**  
**366.89 Acres**



*Prairie Creek Basin, Alachua County*

The Alachua Conservation Trust, Inc. (ACT), acquired three parcels as components of the Prairie Creek Basin Preserve with assistance from FCT through Florida Forever. The project is located in unincorporated Alachua County just south of the Town of Rochelle. It is approximately 3 miles east of the City of Gainesville.

The Prairie Creek Basin Preserve is predominantly a pine flatwoods forest interspersed with upland pine, cypress domes and small open marshes, and is bounded on the west by a floodplain forest along the tannic Prairie Creek. The impacts of historic agriculture and present silvicultural practices, the wide fluctuation in water levels in this very dynamic drainage basin, and the frequency (and more recently the exclusion) of fire are the primary determinants of the ecological communities. Management practices at the preserve include exotic plant control, prescribed burning and firebreaks, pine plantation thinning, replanting longleaf pines and wildlife monitoring. In 2019, the Prairie Creek Basin Preserve was the only location in Alachua County where winter wrens were observed and one of only two locations where Henslow's sparrows were found.

Public use facilities at the preserve include nature trails, picnic areas with benches, educational and directional kiosks, boardwalks and a wildlife blink. Prairie Creek Basin Preserve has been designated as part of the Potano Paddling Trail, an informal blueway which begins at Hatchett Creek and includes Newnans Lake, Prairie Creek, Camps Canal, River Styx and Orange Lake. ACT completed construction of 3.5 miles of trail in May 2008. Since that time, extensive connections have been incorporated to include Blue Trail in 2012, linking the Prairie Creek lodge area with the existing trails, and Purple Trail in 2017, linking an additional FCT acquisition.



*Prairie Creek Basin Preserve, Alachua County*



*Prairie Creek Basin Preserve, Alachua County*

ACT is required to complete 12 educational programs each year at Prairie Creek Basin Preserve. This requirement is met, and exceeded, via educational events and trainings in coordination with the University of Florida, Santa Fe College and the Audubon Society. Events held on-site include forest cleanups, entomology events, trail runs and educational workshops.

# Providing Urban Open Spaces

## Cotanchobee/Fort Brooke Park

City of Tampa

FCT# 98-048-P8A / 99-026-P9A / 02-093-FF2

4.37 Acres

This waterfront park is located along Garrison Channel in Downtown Tampa. The 4.5 acre park includes a playground, pier and memorial to the Seminole Indian Wars. After being acquired in three phases, the Fort Brooke parcels have been dedicated as Cotanchobee/Fort Brooke Park. The park features include Heroes Plaza, which honors all of those veterans who have served in all of our wars, as well as police, fire, and emergency responders who have fallen in the line of duty.

One of the City's primary goals is to purchase waterfront properties for use as parklands. Within downtown Tampa, the City has purchased sites for this purpose along the water; however, the majority of these sites are in the northwestern portion of downtown Tampa. The Fort Brooke parcels lie along the northern bank of Garrison Channel, on the southern edge of downtown. It is one of the City's goals, especially for the downtown area, to have a system of parklands distributed throughout the area and along the waterfront and connected together to form an integrated system. This site is key to the development of this system.

Within a 2 to 2.5 mile radius of the site, all of the census tract #51 (Downtown and Harbour Island), and portions of #50, #53, and #54 (Davis Islands) are encompassed. Approximately 2,020 residents live within census tract #51, residents of Downtown and Harbour Island, and over 8,627 estimated residents live within walking distance (1 mile) of the park, about 2.8 percent of the city's population. Over 39,109 people live within a two-mile radius of the park.



*Cotanchobee/Ft. Brooke Park, Tampa*



*Cotanchobee/Ft. Brooke Park, Tampa*

The park is enjoyed by all age groups, given the passive recreational nature of the park. Users can run, walk, bike or skate along Tampa's well-lit Riverwalk. The last stop of the Riverwalk ends at Cotanchobee Park. A scenic overlook extends out over the mangroves and over the water and a connecting canoe launch is perfect for small watercraft. A unique feature is the Cenotaph, a stainless steel and bronze sculpture created by Native American artist Bob Haozous.

# Acquiring Land for Parks

**Max K. Rodes Park**  
**Brevard County**  
**FCT# 05-030-FF5**  
**100 Acres**



*Max K. Rodes Park, Brevard County*

Max K. Rodes Park is located in the City of West Melbourne. Brevard County, with the help of the community, identified a 128-acre tract of land for Max K. Rodes Park and purchased approximately 100 acres of the site with the assistance of FCT. The final park acreage includes another 4 acres of outparcels that the County has acquired and 24 acres of County road right of way that was vacated.

The recreational amenities developed at the site include a large multi-use field capable of supporting

several soccer fields; football fields; football warmup field; basketball courts; playgrounds; senior league baseball field; baseball fields; softball fields; large and small pavilions; picnic areas; neighborhood recreation center; pedway; sidewalks to the park providing pedestrian access; maintenance facility; parking; multiple restroom/concession buildings; and related site amenities. The 18,000 square foot neighborhood recreation center was constructed to also serve as a hurricane shelter. Passive recreational improvements include a 24,300 linear foot nature trail through the wetlands and buffer areas and a wildlife observation pier.



*Max K. Rodes Park, Brevard County*



*Max K. Rodes Park, Brevard County*

Educators or resource professionals offer nature programming at the neighborhood recreation center. Thousands of children participate in youth activities at the park every year, including tackle and flag football, baseball, softball, youth soccer and cheerleading through programs provided by the Greater West Melbourne Athletic Association.

Spring and winter day camps, summer teen camps, youth summer basketball leagues, adult basketball leagues, adult volleyball leagues, home-school P.E. and art classes, an afterschool program and many other one day programs which target elementary aged children are hosted by park staff at the community center.

The park has also been home to multiple environmental education opportunities including guest speakers and programs during seasonal camps educating youth participants about oceans, seas turtles, snakes, insects and winter weather. Max K. Rodes Park has also hosted the Coastal and Upland modules of the Florida Master Naturalist Program multiple times over the last five years. These two modules are two of the three modules required to become a Florida Master Naturalist.

# Providing Greenways

**Egans Creek Greenway**  
**City of Fernandina Beach**  
**FCT# 01-025-FF1**  
**274.72 Acres**



*Egans Creek Greenway, City of Fernandina Beach*

Physical improvements to the site include a water control gate, boardwalk, multi-use trails for pedestrians and cyclists, interpretive displays and a wildlife observation area. The Nature Pavilion, located at the City of Fernandina Beach’s Atlantic Center entrance (adjacent to Phase I), was completed in 2010. A public restroom, water fountains and covered picnic area are integrated into the pavilion. The southern-most trailhead (Phase II) was also completed in 2010 when a boardwalk was constructed behind a local hotel. Bike racks, kiosks with educational signage, waste receptacles, and greenway signs containing a trail map and user rules are located at the entrances of Phases I and II. Phase II has both a north and south trailhead, with the south entrance serving to meet the requirements of the inaccessible Phase III.

The Egans Creek Greenway project was acquired in with assistance from FCT through funding by Preservation 2000 and Florida Forever programs. The approximately 275 acre project was acquired in three separate phases: Phase I involved the acquisition of 126.18 acres; Phase II acquired 111.98 acres; and Phase III resulted in 36.56 acres being acquired.



*Egans Creek Greenway, City of Fernandina Beach*



*Egans Creek Greenway, City of Fernandina Beach*

Management practices on-site include feral animal monitoring, conservation and restoration of incorporated wetland areas, water quality monitoring, invasive species inventory and exotic plant removal. A salt marsh vegetation die-off was observed following Hurricane Irma in 2017 which was remedied through environmental troubleshooting and resulted in water control gate repairs in 2019. Post completion, the succession back to saltwater vegetation was rapid and encroaching freshwater vegetation receded.

# Fiscal Year 2018-2019 Parks and Open Space Grant Application Cycle

In November 2019, the FCT Governing Board approved the amended final project priority list of projects for the FY 2018-19 submission cycle.

## North Fork II Addition (Zorc Parcels)

St. Lucie County

FCT# 18-017-FF19

20.93 Acres

Project Cost: \$ 528,472.42

Grant Award: \$ 264,236.21

Local Match: \$ 264,236.21



*Captain Hammond's Hammock Preserve  
St. Lucie County*

Captain Hammond's Hammock Preserve (North Fork II FCT# 01-098-FF1 and North Fork II Addition FCT# 18-017-FF19) is a 54.54-acre site located in White City, a historic area south of Fort Pierce, in St. Lucie County. The project site consists of a variety of upland and wetland habitats including hydric hammock, mesic flatwoods, floodplain forest and floodplain marsh. The historic uses of parcels in this region consisted of early agriculture, such as citrus production and cattle grazing. Today, the area is developing, and its uses are shifting to urbanization due to the development pressures occurring in South Florida.

In total, the project site protects nearly 4,000 linear feet of shoreline along the North Fork St. Lucie River (NFSLR) and is encompassed within the North Fork, St. Lucie River

Aquatic Preserve. The NFSLR has been an area of focus among several land acquisition programs, including the Florida Forever program, FCT, South Florida Water Management District's Save Our Rivers program, and St. Lucie County's Environmentally Significant Lands program. Today, acquisition efforts have preserved nearly 4,000 acres of upland and floodplain along the NFSLR. Together with Captain Hammond's Hammock Preserve project, these conservation lands provide important connectivity for wildlife, greenways, and the future NFSLR paddling trail. As part of a state aquatic preserve, the NFSLR is designated as an Outstanding Florida Water. The NFSLR also supports a variety of wildlife and is approximately 16 miles long through the natural riverbends.

The North Fork II Addition project will include amenities such as an observation deck, fishing pier, interpretive kiosks and walking/nature/bike/equestrian or multi-purpose trail. Once completed, the Zorc parcels will benefit from additional planned improvements within the adjacent FCT projects including primitive camping, trail benches, canoe/kayak launches, picnic pavilions, parking, educational kiosks, wildlife viewing and fishing platforms, and a composting toilet.



*Captain Hammond's Hammock Preserve  
St. Lucie County*

**Serenola Forest Acquisition Project**  
**Alachua Conservation Trust, Inc. and Alachua County**  
**FCT# 18-019-FF19**

**110.76 Acres**

Project Cost: \$ 3,275,000

Grant Award: \$ 1,500,000

Local Match: \$ 1,775,000

The purpose of the multi-phase Serenola Forest Project is to provide the community of Gainesville with access to a recreational resource, protect and enhance the ecological corridor between the Serenola Forest and Payne's Prairie Preserve State Park, and preserve and restore the native flora and fauna. The first phase of this project totaled almost 33 acres and was completed in July 2017 with the donation of four parcels through life estates and two parcels through conservation easements. The current, second phase will allow for the direct purchase of almost 111 acres comprised of four parcels.



*Serenola Forest Acquisition Project*  
*Alachua County*

Phase Two of the Serenola Forest Project is located approximately a mile north of Paynes Prairie Preserve State Park. The project also serves as a keystone acquisition by connecting a large conservation area to the west on the Oak Hammock Retirement Community property, with current and future conservation easements located on the southern and eastern sides of Serenola Forest to Paynes Prairie Preserve State Park. The Phase Two parcels feature an existing trail system that has been created and retained by neighbors who use the trails for pedestrian recreation. Future enhancement of the existing trail system will include the creation of access points for both the neighboring Oak Hammock retirement community and Idylwild Elementary school allowing the trails to total more than 2 miles.



*Serenola Forest Acquisition Project*  
*Alachua County*

For Phase Two of the Serenola Forest Project, no buildings exist. Utility easements are present on approximately 11 acres of the site and include an access road and two gate structures. Additional enhancements will include a parking area on the northern border. Proposed outdoor facilities include a picnic pavilion, wildlife observation deck, three informational kiosks, two bike racks, and three benches along the multi-use trail. All enhancements will be positioned in a way that the local community will have easy access without taking away from the natural state of the forest. Additionally, approximately 0.75 miles of the trail system will be ADA compliant.

**South Dade Wetlands Preserve Acquisition Project**  
**Miami-Dade County Environmentally Endangered Lands Program**  
**FCT# 18-018-FF19**

**949.96 Acres**

Project Cost: \$ 3,725,000

Grant Award: \$ 1,500,000

Local Match: \$ 2,225,000



*South Dade Wetlands Preserve Acquisition Project  
Miami-Dade County*

This project funds the acquisition of 33 privately owned parcels of environmentally sensitive lands of within the South Dade Wetlands Preserve. The preserve encompasses over 54,000 acres of wetlands located east of the Southern Glades Wildlife and Environmental Area and between Everglades National Park.

Acquisition of the lands contained within the preserve is vital to the long-term conservation of the preserve and surrounding conservation lands already in public ownership. Acquisition of these properties will allow for large-scale habitat restoration, including hydrologic

restoration and a return of fire to the landscape at a more natural frequency. As this area is low-lying and located close to the coast, the area is likely to be impacted to a high degree by sea level rise. Ultimately, continued sea level rise will result in a natural migration inland of freshwater habitats. Properly restored hydrology and fire regimes should provide greater resiliency to sea level rise for the foreseeable future. Protecting this large expanse of contiguous coastal and freshwater wetlands from future development is the only way to ensure that land will be available for this natural inland migration to occur.

Planned enhancement projects will improve hydrology on over 9,000 acres of forested wetlands. The area is also targeted for restoration under two Comprehensive Everglades Restoration Plan projects: Biscayne Bay Coastal Wetlands and the C-111 Spreader Canal. Miami-Dade County and its partners, South Florida Water Management District (SFWMD) and Florida Fish and Wildlife Conservation Commission (FWC), will control invasive plant species and implement small scale hydrologic enhancement projects to reduce drainage in publicly-owned portions of the preserve. Concurrently, the County, SFWMD and FWC continue to implement initial and maintenance treatments in the project area to control invasive plant species on over 1,900 acres costing over \$2 million during the grant period.

Through a partnership with the National Park Service (NPS), the project will enhance recreational experiences among adjacent NPS park visitors by facilitating water access to Manatee Bay via a proposed boat ramp/canoe launch. Two existing multi-use trails located on the project site will also enhance recreational and educational opportunities on the site, e.g., nature walks, bird watching, bird surveying, guided tours, etc.



*South Dade Wetlands Preserve Acquisition Project  
Miami-Dade County*



**Turkey Creek Park, Hardees Site**  
**City of Niceville**  
**FCT# 18-001-FF19**

**11.17 Acres**

Project Cost: \$ 1,178,000  
Grant Award: \$ 700,000  
Local Match: \$ 478,000

The City of Niceville's awarded project will further enhance Turkey Creek Park through the acquisition of two additional parcels and the incorporation of four pre-acquired parcels into the park under the FCT management guidelines. This application is Phase V of park improvements including the FCT funded Phase III (FCT# 94-014-P4A) and Phase IV (FCT# 11-015-FF11). The purpose of the proposed acquisitions is to provide for enhanced utilization of the park for access to public recreation facilities and for the additional and lasting protection of the designated Turkey Creek Ecological Corridor.



*Turkey Creek Park, Hardees Site  
City of Niceville*

The proposed improvements consist of parking and recreational features on the proposed acquisition site, with natural resource management and trails only on the four pre-acquired sites. These four sites will also be added to the joint management program for the park with the Florida Department of Agriculture and Consumer Services Florida Forest Service and the Florida Fish and Wildlife Conservation Commission. Turkey Creek Park is a state designated paddling and hiking trail and is adjacent to Eglin Air Force Base.



*Turkey Creek Park, Hardees Site  
City of Niceville*

There are no buildings on the project site, although the acquisition parcel formerly housed a Hardees building which has been removed.

The acquisition site is adjacent to the Breland property purchased under FCT# 11-015-FF11 and will support its FCT approved development and ultimate utilization. The approved site plan for Phase IV improvements are exhibited to the left. The proposed new project site will provide public access facilities to the Southern Park facilities including the Neal House to provide for an environmental resource center per FCT# 11-015-FF11.

**Turnbull Creek Watershed Preservation Project**  
**City of New Smyrna Beach**  
**FCT# 18-021-FF19**

**147.4 Acres**

Project Cost: \$ 9,050,000

Grant Award: \$ 3,620,000

Local Match: \$ 5,430,000



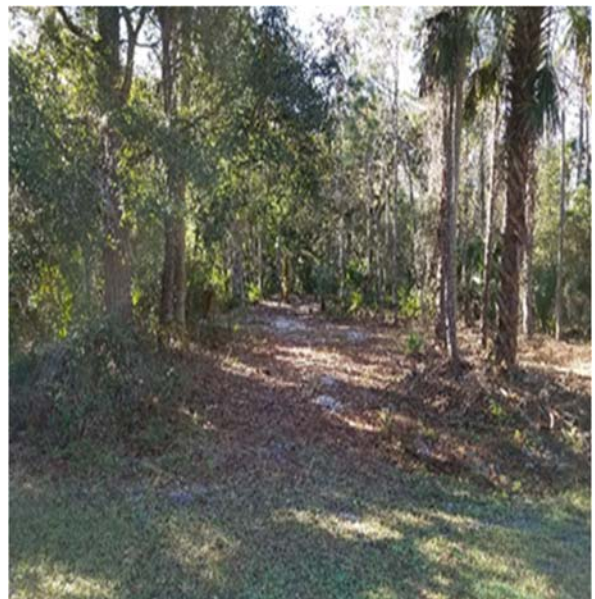
*Turnbull Creek Watershed Preservation Project  
City of New Smyrna Beach*

Turnbull Creek Watershed Preservation Project is located along Turnbull Creek and adjacent to Holland Park in the City of New Smyrna Beach. The undisturbed parcels of this project form a natural watershed for tidal flow from the creek into Turnbull Bay to Spruce Creek. It is one of the area's most environmentally significant waters recognized as an Outstanding Florida Water and connects to the Halifax River. By abutting existing park land, this addition will further protect the watershed as well as enhance natural recreation opportunities. The creek itself has a rich cultural and historic significance. Hand dug in the 1760-time frame by settlers of Dr. Andrew Turnbull's Smyrna Colony, the creek was a part of a system of

"Egyptian Style" canals built and lined with locally quarried coquina rock. The canals, used as irrigation for the settlement, were thought to be the first of their type built in the new world. Remnants of the canals were added to the National Register of Historic places in 2007. Equally important to the community is the environmental benefit these parcels have toward mitigating flooding during periods of heavy rain from tropical systems and regular seasonal thunderstorm activity. Leaving these parcels largely undeveloped will reduce runoff of hazardous pollutants into the existing collection systems and help replenish the important potable water aquifer.

The project site abuts another City-owned park, Holland Park, and will enhance natural recreation opportunities of the whole community. The site already has an existing multi-use trail that runs through this property along the New Smyrna Beach Utilities Commission's easement. The amenities to be developed on this property include an unpaved nature trail with an educational kiosk at the trailhead and interpretive signage along the trail educating the public about the environmental and historical significance of the property, an observation tower for bird and nature watching, picnic facilities and benches along the creek.

The acquisition of the nine parcels that total approximately 147 acres will be a big step toward the City's effort to keep this land along the watershed in its natural state, bounded by existing parkland and natural watershed forming a green corridor for citizens and visitors to enjoy located within the metro area of the city.



*Turnbull Creek Watershed Preservation Project  
City of New Smyrna Beach*

**Tract B**  
**City of Fellsmere**  
**FCT# 18-011-FF19**  
**341.91 Acres**

Project Cost: \$ 2,657,340.17  
Grant Award: \$ 2,415,763.79  
Local Match: \$ 241,576.38

This proposed FCT project site is located in northern Indian River County on the eastern boundary of the City of Fellsmere. The property is situated between Interstate 95 and County Road 512 and is currently undeveloped. The site contains a conservation easement and a linear tract that was donated to the City for the Trans-Florida Central Greenway. The greenway provides a connection to several existing FCT sites including the adjacent Fellsmere Trailhead Preserve. In 2018, the Florida Department of Transportation (FDOT) completed an overpass over I-95 with a 12-foot wide trail corridor that directly connects to the trailhead preserve site. Surrounded by commercial, residential and other conservation lands the site presents a unique opportunity for the City to acquire open space before private development impacts the land forever.



*Tract B, City of Fellsmere*

Tract B was privately owned and was being planned for a mixed-use development. However, the development never broke ground and the property was subsequently taken over by the lender and put up for sale. The proposed FCT project site consists of undisturbed upland forest and wetlands. A 167.5 conservation easement was established in October 2014 and provides for only passive recreation and conservation uses. The second conservation easement runs east to west across the property, contains the greenway and consists of approximately 8 acres. Three lakes are located on the site and a historic drainage canal runs through the northern conservation area.



*Tract B, City of Fellsmere*

Once acquired the City will create a management plan for the site that includes a master plan for development of recreation, drainage and conservation elements. The project will consist of the construction of a nature observation pier on the southern lake, a picnic shelter and an interpretive kiosk which will be installed adjacent to the parking area and entrance road. Natural stormwater facilities will be created in the access areas and native landscaping will be installed through this portion of the site and along the greenway boundaries. A removal plan for invasive species will be created and implementation will begin before significant development takes place.

The site will be accessible by automobile through the access road and parking. An existing sidewalk along CR 512 will connect to the site, providing access for pedestrians from the surrounding neighborhoods, commercial areas and a nearby middle school. In addition, trail users will be able to access the site along the Trans-Florida Central Greenway. The paved trail runs through the site and is planned to stretch from the coast, west to the Blue Cypress Conservation Area. The greenway provides links to both parks and conservation areas including St. Sebastian River State Park, North County Regional Park, Ansin Tract and Fellsmere Trailhead Preserve.

# Florida Communities Trust Post-Completion Workshops



*FCT Post Completion Workshop  
West Palm Beach*

In October 2019, FCT staff conducted two regional workshops. The workshops were geared to inform managers of FCT project sites of their ongoing post-completion responsibilities as FCT grant recipients. FCT encouraged all project managers, especially those new to their positions and new to FCT requirements, to attend one of these workshops.

FCT presented the first workshop in Tallahassee on October 15, 2019. The second followed on October 23, 2019 in West Palm Beach. Staff selected the sites based upon available facilities, as well as ease of travel from either north or south Florida.

FCT arranged a Skype link for remote participation for those who are unable to travel to either workshop site. FCT also recorded the workshop and made the presentation available on our website for those who could neither attend in person nor participate via Skype.

Workshop participants came away with a better understanding of their post-completion responsibilities, including:

- Development of FCT Project Sites
- Stewardship Reports
- Revenue Reports
- Changes to Management Plans
- Leases/Use Agreements/Memoranda of Understanding
- Boundary Modifications
- Amendments to Declarations of Restrictive Covenants
- Land Exchanges
- Linear Facilities
- Transition to Five-Year Stewardship Cycle
- Transfer or Reversion of FCT Project Sites

Feedback from participants was universally positive. All FCT project planners were present at the workshops. The agenda allowed ample time for one-on-one discussions after the formal presentations concluded. This provided an excellent opportunity for FCT project managers (our customers) to get answers to questions or voice their concerns. FCT staff hope to present similar workshops in the future.



*FCT Post-Completion Workshop  
West Palm Beach*

# Fiscal Year 2019-2020 Stan Mayfield Working Waterfronts Grant Application Cycle

The Stan Mayfield Working Waterfronts (SMWW) Florida Forever Grant Program was created by the 2008 Legislature in Section 380.5105, Florida Statutes. A total of \$2,779,113.57 was available for the FY 2019-20 grant application submission period, which was held August 5 through September 20, 2019.

SMWW funds are for the acquisition of land directly used for the purposes of the commercial harvest of marine organisms or saltwater products by state licensed commercial fishermen, aquaculturists or business entities. Facilities may include piers, wharves, docks, or others operated to provide waterfront access to qualified entities. The acquisition of land used for recreational waterfront activities is not considered within the SMWW program.



*Seven Mile Fish Camp, Edgewater*



*Seven Mile Fish Camp, Edgewater*

SMWW funds may also be used for the acquisition of land used for exhibitions, demonstrations, educational venues, civic events, and other purposes that promote and educate the public about economic, cultural, and historic heritage of Florida's traditional working waterfronts, including the marketing of the seafood and aquaculture industries.

Two projects were approved for funding in the FY 2019-20 cycle:

**Seven Mile Fish Camp**, Phase 1 in Edgewater. The Riverside Conservancy was awarded a grant to purchase and preserve one of the last remaining working waterfronts in the City of Edgewater. In years past, the site was a working waterfront on the Indian River Lagoon. FCT expects to execute a grant agreement so acquisition activities may begin in FY 2020-21.

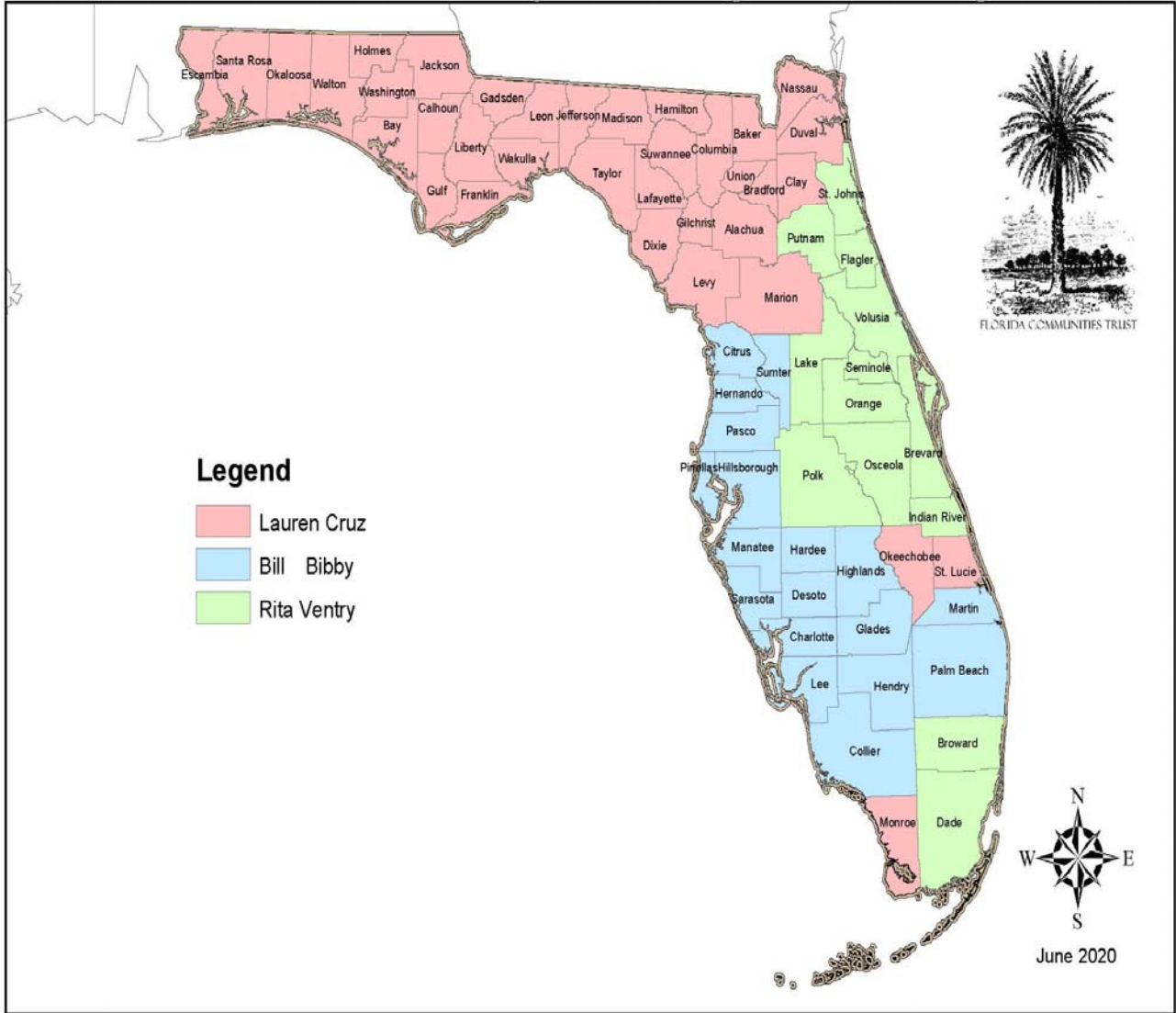
**Pelican Bay Working Waterfront** in Fort Myers Beach. The Ostego Bay Foundation, Inc. was awarded a grant to purchase and preserve an existing working waterfront on Pelican Bay in Fort Myers Beach. This acquisition will preserve the site as a working waterfront for future generations. FCT expects to execute a grant agreement so acquisition activities may begin in FY 2020-21.



*Pelican Bay Working Waterfront, Fort Myers Beach*

# SITE VISITS

## FCT Evaluation and Project Management Assignments



# North Florida



*Shell Point  
Wakulla County*



*Shell Point  
Wakulla County*



*Crooked River Lighthouse  
Park  
Carrabelle*



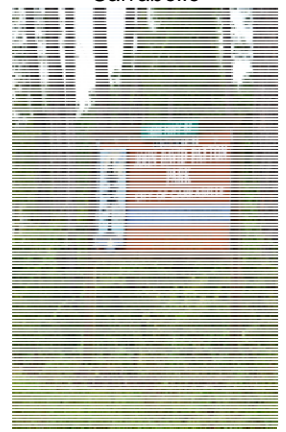
*Crooked River Lighthouse  
Park  
Carrabelle*



*Purify Creek  
Wakulla County*



*Purify Creek  
Wakulla County*



*John David Patton Wildlife  
Park  
Carrabelle*



*John David Patton Wildlife  
Park  
Carrabelle*



*Wakulla Welcome Center  
Wakulla County*



*Wakulla Welcome Center  
Wakulla County*



*Apalachicola Boat Works  
Apalachicola*

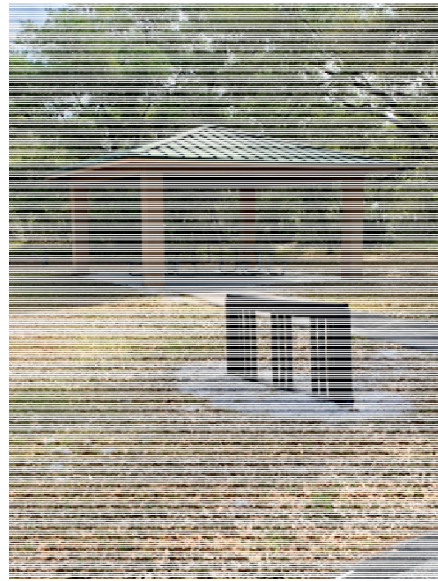


*Apalachicola Boat Works  
Apalachicola*

# Southwest Florida



*Caloosahatchee Creeks Preserve  
Lee County*



*Caloosahatchee Creeks Preserve  
Lee County*



*Indian Rocks Beach Preserve  
Indian Rocks Beach*



*Caloosahatchee Creeks Preserve  
Lee County*



*Indian Rocks Beach Preserve  
Indian Rocks Beach*



*Indian Rocks Beach Preserve  
Indian Rocks Beach*

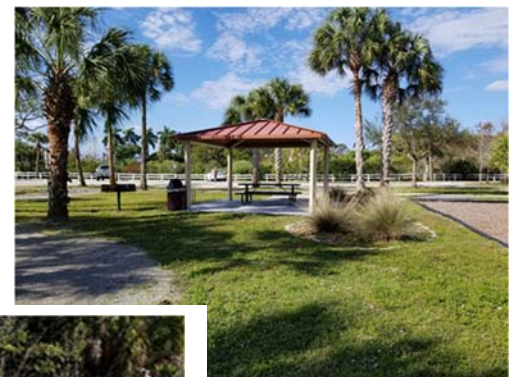
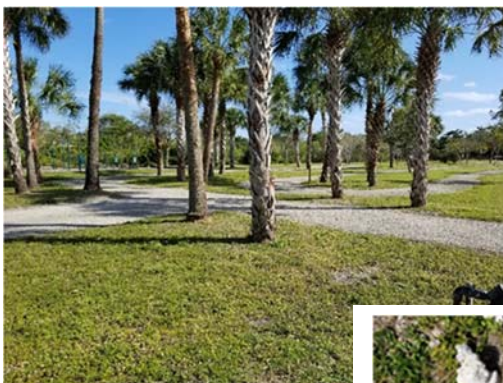


## Southeast Florida

### Hypoluxo Scrub Natural Area, Palm Beach County/Town of Hypoluxo



### Whispering Woods Park, Coral Springs



Memorial Site for Marjorie Douglas Stoneman School Tragedy  
Whispering Woods Park, Coral Springs

# CLOSINGS AND REIMBURSEMENTS

During FY 2019-20, two FCT grant projects closed and the grant recipients were reimbursed.

## **Hammock Park Expansion**

**City of Dunedin**

**FCT# 16-004-UA17**

**8.70 Acres**

Project Cost: \$ 1,365,265.00

Grant Award: \$ 682,632.50

Local Match: \$ 682,632.50

The parcel purchased in this project is located on the southeastern end of the City of Dunedin's Hammock Park. The park is the largest natural area in the City's park system. In 1976, Hammock Park was named the first Natural Feature under the state's new Natural Features program. It is a pristine area of preservation in Florida's most densely populated county.

The acquisition of the privately-owned parcel creates an opportunity to extend the park's trail system and to better ensure the protection of gopher tortoise population in the area. The site had originally been targeted for residential development. Now, thousands of visitors each year will enjoy a nature trail as a respite for reflection and appreciation.

Physical improvements to the site will consist of an interpretive trail, extension of the existing gopher tortoise trail and to make the area accessible to the public. The trail extension will be constructed so as



*Hammock Park Expansion, City of Dunedin*

to provide access to people with disabilities, including an approved, accessible trail surface and interpretive signage to include Braille labeling. Benches will be placed along the trail so that visitors may rest and enjoy the natural setting of the park. An observation deck will be constructed to allow views of gopher tortoise habitat without getting too close.



*Hammock Park Expansion, City of Dunedin*

As part of Hammock Park, the site is under the management of the City's Parks & Recreation Department. Additionally, the nonprofit Friends of the Hammock organization work to raise funds for projects in the park. The Friends hold regular events to educate the public about this unique gem in the City's park system.

**Homosassa Heritage Park and Working Waterfront**  
**The Homosassa Civic Club Inc.**  
**FCT# 18-001-WW19**

**2.01 Acres**

Project Cost: \$ 1,445,008.66

Grant Award: \$ 1,445,008.66

Local Match: \$ 0.00



*Homosassa Heritage Park and Working Waterfront, Homosassa*

The southwest corner of Citrus County is home to the unique community of Old Homosassa. This unincorporated Florida town has been known for years as an area rich in traditional fishing village history, cracker style architecture and distinctive natural resources. The Town of Homosassa's unique character is under considerable pressure from development, which has led the community to establish community goals and prepare a redevelopment plan. One of the keystones of this plan is the preservation of a working waterfront along the Homosassa River. The Homosassa Civic Club, Inc., (Civic Club) took on this challenge.

As a nonprofit working waterfronts organization, the Civic Club was not required to provide matching funds toward the \$1.4 million purchase of this project site. The Civic Club will manage this riverfront property as a Working Waterfront. The 2.01 acre property has historically been used as a commercial working waterfront.

The property includes a working fish house, mobile food trailer, commercial freezers, storage space, residential building (Cracker House) and docks. A management group will secure long-term leases with existing commercial seafood market operators and boat owners to continue operating as a commercial fish market and commercial fishing operation. There are two new proprietors of the mobile food trailer that produces great seafood dishes, using Fresh from Florida seafood. One residential building (cracker house) will be converted to a museum to showcase artifacts, pictures, tools of the fishing trades and local history and lore.

The commercial fish market building, "Shelly's Seafood and Fish Market," is on the river and has a mooring dock for customers to buy and commercial fishermen to off load and sell. The market has a commercial freezer on the property that is 24' wide by 10' wide. A metal storage building on the property contains dismantled small buildings that at one time were utilized as small fishing cabins. Plans are to use this lumber to construct a replica cabin.



*Homosassa Heritage Park and Working Waterfront, Homosassa*

# ACQUIRED PROJECTS: 1991 – 2020

Project #	Project Name	Recipient	Acres
<b>Alachua County</b>			
91-049-P1A	Hogtown Creek Greenway	City of Gainesville / Alachua County	483.85
99-039-P9A	Depot Junction	City of Gainesville	17.94
01-103-FF1	Micanopy Native American Heritage Preserve	Town of Micanopy	15.70
01-141-FF1	Blues Creek Ravine and Fox Pond	Alachua Conservation Trust	160.00
01-149-FF1	Beville Creek	City of Gainesville	30.48
02-043-FF2	Mill Creek Nature Preserve	Alachua County	1,188.22
02-077-FF2	Duval Neighborhood Stormwater Park	City of Gainesville	26.20
02-089-FF2	San Felasco Conservation Corridor	City of Alachua	15.29
04-071-FF4	Tuscawilla Lake	Alachua Conservation Trust	377.69
05-024-FF5	Payne's Prairie Sweetwater Addition	Alachua County	120.99
06-095-FF6	Hogtown Creek Headwaters	City of Gainesville	74.62
06-096-FF6	Prairie Creek Basin	Alachua Conservation Trust	366.89
06-110-FF6	Barr Hammock Ledwith Prairie	Alachua Conservation Trust	2,302.96
07-114-FF7	Levy Prairie (AKA Barr Hammock Preserve)	Alachua County	3,270.24
07-115-FF7	Phifer Flatwoods	Alachua County	644.52
08-082-FF8	Santa Fe Preserve	Alachua County	167.09
08-085-FF8	Little Orange Creek	City of Hawthorne	1,309.36
11-021-FF11	Turkey Creek Hammock Preserve	Alachua County	376.58
16-016-UA17	Upper Santa Fe River Corridor	Alachua County	713.93
<b>Baker County</b>			
03-040-FF3	St. Mary's Shoals	Baker County	1,631.70
08-069-FF8	St. Mary's Shoals - Phase II	Baker County	936.52
<b>Bay County</b>			
92-021-P2A	Thomas Drive Beach Access	Bay County	4.72
92-042-P2A	Parker Tract	City of Mexico Beach	1.54
93-026-P3A	Sweetbay Wetlands Preserve	City of Panama City	5.77
93-027-P3A	Oaks by the Bay	City of Panama City	4.80
96-006-P7A	Parker Environmental Exploratorium	City of Parker	12.03
96-025-P7A	Venetian Sunset Park	City of Panama City	0.93
01-150-FF1	Pier Park	City of Panama City Beach	69.24
01-153-FF1	Coral Bean Addition Under the Oaks Park	City of Parker	11.43
<b>Brevard County</b>			
91-016-P1A	Turkey Creek Scrub	Brevard County	34.65
95-019-P56	Manatee Sanctuary Park	City of Cape Canaveral	10.24
95-063-P56	Malabar Sanctuary Greenway I	Town of Malabar	142.64
95-064-P56	Ais Lookout Point	City of Palm Bay	3.45
95-079-P56	Wavecrest Park Extension	Town of Indianalantic	0.91
96-019-P7A	Malabar Sanctuary Greenway	Town of Malabar	27.19
96-059-P7A	Turkey Creek Blueway	City of Palm Bay	20.17
96-060-P7A	Castaway Point	City of Palm Bay	0.45

Project #	Project Name	Recipient	Acres
<b>Brevard County (Continued)</b>			
96-062-P7A	Banana River Park	City of Cape Canaveral	5.01
98-044-P8A	Oceanfront Wildlife and Habitat Preserve	City of Satellite Beach	15.00
98-076-P8A	Melbourne Beach Loggerhead Park	Town of Melbourne Beach	1.04
99-044-P9A	Oceanfront Preservation	City of Satellite Beach / Brevard County	2.16
01-065-FF1	Shoreside Park	Town of Palm Shores	0.32
01-077-FF1	Cocoa Conservation Area	City of Cocoa	163.27
02-038-FF2	Downtown Stormwater Park	City of Titusville	4.20
03-020-FF3	Eau Gallie Square	City of Melbourne	0.56
03-035-FF3	Cocoa Beach Maritime Hammock Preserve	City of Cocoa Beach	5.42
05-030-FF5	Max K. Rodes Park	Brevard County	119.13
06-001-FF6	Anderson Stormwater Park	City of Rockledge	9.92
06-055-FF6	Molitor Property	City of Titusville	5.75
06-080-FF6	Thousand Islands Conservation Area	Brevard County	240.48
08-002-WW1	Blue Crab Cove	Brevard County	2.79
11-031-FF11	Veteran's Memorial Park	Brevard County	43.53
<b>Broward County</b>			
93-025-P3A	Environmental Preserve	Town of Pembroke Park	9.37
94-008-P4A	The Sawgrass Sanctuary	City of Sunrise	10.00
94-015-P4A	Sheridan Oak Forest	City of Hollywood / Broward County	12.88
95-055-P56	Island City Park Preserve	City of Wilton Manor	1.72
96-014-P7A	Sabal Pines Park	City of Coconut Creek	15.27
96-058-P7A	Sandy Ridge Sanctuary	City of Coral Springs	37.91
99-036-P9A	Academic and Outdoor Recreation Village	City of Pembroke Pines	28.21
99-073-P9A	Carpenter's Sand Pine Preserve	City of Oakland Park	5.63
00-025-P10	McNab Park Restoration	City of Tamarac	7.97
00-055-P10	Richardson Property	City of Wilton Manors / Broward County	5.40
00-071-P10	Pembroke Pines Preservation Expansion	City of Pembroke Pines	8.49
01-047-FF1	Plantation Central Open Space	City of Plantation	213.82
01-074-FF1	Pleasant Oceanside Preserve	City of Deerfield Beach	0.67
01-076-FF1	Island City Park Addition	City of Wilton Manors	0.31
01-093-FF1	Hollywood North Beach Addition	Broward County / City of Hollywood	0.22
01-113-FF1	Sheridan Street ESL Addition	Broward County	5.36
01-118-FF1	Miramar Pineland ESL Addition	Broward County / City of Miramar	52.68
02-002-FF2	Central Broward Regional Park	Broward County / City of Lauderhill	81.00
02-018-FF2	Florence Hardy Park	City of Ft. Lauderdale	3.10
02-021-FF2	Last Cypress East	Broward County / City of Lauderdale Lakes	6.45

Project #	Project Name	Recipient	Acres
<b>Broward County (Continued)</b>			
02-022-FF2	Last Cypress West	Broward County / City of Lauderdale Lakes	6.38
02-049-FF2	Southwest Nature and Recreational Park	City of Pembroke Pines	56.52
02-088-FF2	Davie's Wetlands Restoration	Town of Davie	115.05
03-010-FF3	Highlands Scrub Addition	Broward County	4.53
03-011-FF3	Helene Klein Pineland Preserve	Broward County	12.09
03-012-FF3	Hillsboro Pineland ESL Addition	Broward County	11.68
03-014-FF3	Mills Pond Addition	Broward County	22.98
03-022-FF3	Country Estates Open Space and Fishing Hole	Town of Southwest Ranches	16.40
03-025-FF3	Southwest Meadows Sanctuary	Town of Southwest Ranches	16.87
03-026-FF3	Frontier Trails Conservation Area	Town of Southwest Ranches	93.23
03-043-FF3	Tamarac Preservation Park	City of Tamarac	15.10
04-002-FF4	Vista View Regional Park Expansion	Broward County	61.05
04-003-FF4	Whispering Woods Park	Broward County / City of Coral Springs	11.36
04-007-FF4	Hollywood North Beach Park Addition 2	Broward County	0.54
04-008-FF4	Little Fuzzy Bunny Cove	Broward County / City of Dania Beach	5.08
04-009-FF4	Coontie Hatchee Landing	Broward County / City of Fort Lauderdale	2.60
04-010-FF4	Sunny Lake Trailhead and Conservation Park	Town of Davie	16.87
04-011-FF4	Saw Palmetto aka Hillsboro Pineland	Broward County	9.08
04-012-FF4	Deerfield Beachfront Park	City of Deerfield Beach / Town of Hillsboro	0.29
04-019-FF4	Calusa Corners	Town of Southwest Ranches	11.62
05-002-FF5	Broward Co. and City of Fort Lauderdale	North Fork Riverwalk	2.00
05-006-FF5	West Creek Pineland Passage	Broward County	7.43
05-048-FF5	Davie Farm Park	Town of Davie	54.37
06-011-FF6	Central Broward Regional Park	Broward County	3.70
07-004-FF7	Chapel Trail Nature Preserve	City of Pembroke Pines	9.40

**Calhoun County**

96-055-P7A	Atkins Park Addition	Calhoun County	180.55
------------	----------------------	----------------	--------

**Charlotte County**

92-012-P2A	Tippecanoe Scrub	Charlotte County	346.92
94-020-P4A	Amberjack Slough	Charlotte County	182.53
94-027-P4A	Punta Gorda Nature Park	City of Punta Gorda	19.00
96-008-P7A	Charlotte Harbor Flatwoods Addition (AKA Charlotte Flatwoods Environmental Park)	Charlotte County	486.50
98-025-P8A	William R. Gaines Jr. Memorial Veterans Park (PKA Sunrise Park)	Charlotte County	40.28
98-026-P8A	Oyster Creek Park - Dunwoody	Charlotte County	131.70
99-013-P9A	Englewood Beach	Charlotte County	2.15
99-064-P9A	San Casa	Charlotte County	117.53
01-018-FF1	Bayshore Linear Park	Charlotte County	2.12
01-024-FF1	Cedar Point Park	Charlotte County	16.19
01-026-FF1	South County Regional Park	Charlotte County	62.31

Project #	Project Name	Recipient	Acres
<b>Charlotte County (Continued)</b>			
01-063-FF1	Tippecanoe Scrub Environmental Park - Phase II	Charlotte County	25.10
03-091-FF3	Cedar Point Park - Phase III	Lemon Bay Conservancy	1.64
04-004-FF4	Amberjack Scrub Environmental Park - Phase II	Charlotte County	34.33
05-020-FF5	Bayshore Park Addition - Phase II	Charlotte County	0.11
08-014-FF8	Buck Creek Preserve (AKA Bill Coy Preserve)	Charlotte County	68.75

**Citrus County**

95-015-P56	Wallace Brooks/Lake Henderson	City of Inverness	4.80
95-016-P56	Cooter Pond	City of Inverness	0.94
96-002-P7A	Nature Coast Environmental Center	City of Crystal River	12.42
01-138-FF1	Kings Bay	City of Crystal River	3.28
08-088-FF8	Three Sisters Springs	City of Crystal River	57.11
18-001-WW19	Homosassa Heritage Park and Working Waterfront	Homosassa Civic Club, Inc.	2.01

**Clay County**

96-022-P7A	Keystone Beach - Smysor Park	City of Keystone Heights	3.74
02-045-FF2	Green Cove Springs Nature Preserve	City of Green Cove Springs	102.84
02-097-FF2	Moccasin Slough	Clay County	260.40
04-078-FF4	Camp Chowenwaw	Clay County	150.00
05-050-FF5	Green Cove Springs Nature Preserve	City of Green Cove Springs	13.06
08-048-FF8	Green Cove Springs Nature Preserve	City of Green Cove Springs	143.07

**Collier County**

94-023-P4A	Master Mitigation Preserve	Collier County	85.44
95-017-P56	Lake Avalon County Park (AKA Sugden Regional Park)	Collier County	117.06
01-040-FF1	The Naples Preserve	City of Naples	9.58
03-018-FF3	Lely Mitigation Park	Collier County	98.92
03-073-FF3	Preserve the Preserve	Collier County	1.44
04-042-FF4	Goodland Harbor	Collier County	2.64
05-027-FF5	Gordon River Water Quality Park	Collier County	39.96
06-043-FF6	Gordon River Greenway Park	Collier County	84.93

**Columbia County**

94-001-P4A	Alligator Lake	Columbia County	878.97
------------	----------------	-----------------	--------

**Dixie County**

02-096-FF2	Joe Henry Anderson Senior Park	Dixie County	4.43
08-062-FF8	Spurgeon Cheek Trailhead Camp	Dixie County	13.92
08-063-FF8	Mershon Williams Yellow Jacket Landing	Dixie County	21.28

**Duval County**

91-046-P1A	Cedar Point	City of Jacksonville	193.50
92-031-P2A	Ortega Stream Valley Park	City of Jacksonville	317.30
92-032-P2A	Blue Cypress	City of Jacksonville	118.00
93-006-P3A	County Dock Historical Park	City of Jacksonville	10.30
95-051-P56	Intracoastal Waterway Park	City of Atlantic Beach	7.00
95-058-P56	Dutton Island Intracoastal Waterway Park	City of Jacksonville / City of Atlantic Beach	37.77

Project #	Project Name	Recipient	Acres
<b>Duval County (Continued)</b>			
96-050-P7A	Tree Hill Nature Center Addition	City of Jacksonville	10.30
96-052-P7A	Julington Creek Headwaters Park	City of Jacksonville	203.23
98-094-P8A	Julington Creek Headwaters Park II	City of Jacksonville	424.11
99-018-P9A	Dutton Island	City of Jacksonville / City of Atlantic Beach	92.15
00-009-P10	Castaway Island Preserve	City of Jacksonville	311.84
01-034-FF1	Cradle Creek Preserve	City of Jacksonville Beach	36.54
01-112-FF1	McGirts Creek Park Expansion	City of Jacksonville	160.00
01-115-FF1	Reddie Point Preserve	City of Jacksonville	101.80
01-120-FF1	Jacksonville-Baldwin Rails to Trails Buffer	City of Jacksonville	625.77
01-122-FF1	Beach and Peach Urban Park	City of Jacksonville	68.44
02-086-FF2	Yellow Water Creek Trailhead	City of Jacksonville	264.56
03-046-FF3	McGirts Creek Park Expansion - Phase II	City of Jacksonville	264.52
03-048-FF3	Sal Taylor Creek Preserve	City of Jacksonville	406.43
04-052-FF4	Jacksonville-Baldwin Rails to Trails Buffer II	City of Jacksonville	325.45
05-044-FF5	Cedar Point Preserve - Phase II	City of Jacksonville	53.00
06-042-FF6	Ribault River Urban Waterfront Park	City of Jacksonville	2.28
06-078-FF6	Huguenot Memorial Park Expansion	City of Jacksonville	10.80
<b>Escambia County</b>			
95-014-P56	Jones Swamp Wetlands Preserve	Escambia County	440.61
96-033-P7A	North Escambia River Site	Town of Century	5.00
98-089-P8A	Scenic Highway Bluffs Preserve	City of Pensacola	7.36
98-090-P8A	Old Chimney Property	City of Pensacola	2.03
05-041-FF5	Jones Swamp Wetlands Preserve	Escambia County	10.03
<b>Flagler County</b>			
91-023-P1A	Princess Place	Flagler County	420.00
93-016-P3A	Princess Place II	Flagler County	930.36
95-013-P56	Silver Lake Park	City of Flagler Beach	47.59
96-005-P7A	Flagship Harbor Preserve	City of Flagler Beach / Flagler County	105.27
98-083-P8A	River to Sea Preserve at Marineland	Flagler County / Town of Marineland	86.48
99-062-P9A	Mala Compra Greenway	Flagler County	4.57
00-105-P10	Matanzas Estuary GeoPark	Town of Marineland	125.79
01-013-FF1	Palm Coast Greenway	City of Palm Coast	56.77
02-013-FF2	Mirror Lake Watershed	City of Flagler Beach	5.21
04-024-FF4	Ocean Walk Park	City of Flagler Beach	5.56
04-050-FF4	Mala Compra Oceanfront Park Addition	Flagler County	5.00
08-027-FF8	Long's Landing Estuary	City of Palm Coast	9.25
11-026-FF11	Bay Drive Park - Phase II	Flagler County	12.94
<b>Franklin County</b>			
93-011-P3A	Apalachicola Riverwalk	City of Apalachicola	0.39
94-013-P4A	Carrabelle Riverwalk and Tidal Basin Park	City of Carrabelle	0.57
95-078-P56	Apalachicola Waterfront	City of Apalachicola	0.79

Project #	Project Name	Recipient	Acres
<b>Franklin County (Continued)</b>			
00-001-CS6	City of Apalachicola ACSC	City of Apalachicola	1,600.00
02-040-FF2	Carrabelle Wildlife Park	City of Carrabelle	53.36
04-063-FF4	Apalachicola Waterfront Park	City of Apalachicola	0.29
04-076-FF4	Crooked River Lighthouse Addition	City of Carrabelle	2.02
06-048-FF6;	Apalachicola Riverwalk - Phase III	City of Apalachicola	3.39
06-093-FF6	Indian Creek Park	Franklin County	5.09
07-111-FF7	Apalachicola Riverwalk - Phase V - Holmes & Peterson	City of Apalachicola	0.44
08-004-WW1	Eastpoint Working Waterfront	Franklin County	0.87
08-006-WW1	Apalachicola Boatworks	City of Apalachicola	0.16
08-078-FF8	Apalachicola Riverwalk - Phase VI - McLemore Parcel	City of Apalachicola	1.08
<b>Gadsden County</b>			
00-086-P10	Chattahoochee Nature and Rec	City of Chattahoochee	98.21
03-067-FF3	Tanyard Creek Preservation Park - Phase I	City of Quincy	116.70
04-070-FF4	Tanyard Creek Preservation Park - Phase II	City of Quincy	3.90
<b>Gilchrist County</b>			
98-033-P8A	Fort Fanning Heritage Park	City of Fanning Springs	9.81
<b>Gulf County</b>			
93-028-P3A	Shipyards Cove	City of Port St. Joe	3.19
08-077-FF8	Port St. Joe Waterfront Park	City of Port St. Joe	3.29
<b>Hardee County</b>			
98-001-P8A	Peace River Park	City of Wauchula	151.41
<b>Hernando County</b>			
93-012-P3A	Cypress Lakes	Hernando County	324.46
95-029-P56	The Good Neighbor Trail	City of Brooksville	31.30
98-053-P8A	Cypress Lakes Preserve Addition	Hernando County	6.57
<b>Highlands County</b>			
94-042-P4A	Sun 'n Lakes Preserve	Highlands County	1,339.23
<b>Hillsborough County</b>			
91-053-P1A	Cypress Creek Preserve	Hillsborough County	1,318.47
92-038-P2A	Riverhills Park Addition	City of Temple Terrace	15.60
92-039-P2A	Temple Terrace Riverfront Park	City of Temple Terrace	53.25
92-041-P2A	Cypress Street Restoration Park	Hillsborough County / City of Tampa	37.51
93-018-P3A	Blackwater Creek Preserve	Hillsborough County	1,805.88
94-009-P4A	Blackwater Hammock	City of Tampa	6.72
95-027-P56	Massie/Zack Park and Preserve	City of Plant City	365.04
95-044-P56	Apollo Beach Park	Hillsborough County	58.25
95-045-P56	Flynn Lake Nature Park	Hillsborough County	161.90
96-010-P7A	Sterling Downs	Hillsborough County	445.86
98-047-P8A	New Tampa Flatwoods	City of Tampa	121.68
98-048-P8A	Fort Brooke Park	City of Tampa	2.20
98-054-P8A	Alafia Scrub	Hillsborough County	77.82
99-010-P9A	Cypress Creek Preserve - Phase II	Hillsborough County	827.34
99-026-P9A	Ribbon of Green	City of Tampa	1.24

Project #	Project Name	Recipient	Acres
<b>Hillsborough County (Continued)</b>			
00-032-P10	Riverhills Park Addition	City of Temple Terrace	5.40
00-045-P10	Fort Brooke Park Addition	City of Tampa	1.68
01-048-FF1	Triple Creek Greenway	Hillsborough County	751.40
01-049-FF1	Town 'n Country	Hillsborough County	127.37
02-073-FF2	Fish Hawk Creek	Hillsborough County	934.06
02-093-FF2	Fort Brooke - Phase III	City of Tampa	2.47
03-015-FF3	Alafia River - Phase I	Hillsborough County	1,267.10
03-081-FF3	River Tower Park	City of Tampa	12.82
03-083-FF3	South MacDill 48	City of Tampa	47.49
04-029-FF4	Alafia River - Phase II	Hillsborough County	339.06
04-032-FF4	Rocky Creek Trails	Hillsborough County	16.34
06-019-FF6	Triple Creek Greenway - Phase II	Hillsborough County	226.74
08-022-FF8	Lake Dan Preserve - Phase I	Hillsborough County	655.34
11-046-FF11	Lake Dan Preserve - Phase II	Hillsborough County	421.94
<b>Holmes County</b>			
96-035-P7A	Wrights Creek Site	Holmes County	68.16
<b>Indian River County</b>			
92-018-P2A	Wabasso Scrub	Indian River County	111.38
93-002-P3A	Prang Island	Indian River County / City of Vero Beach	26.49
94-032-P4A	Sebastian Scrub	City of Sebastian / Indian River County	8.00
95-025-P56	AGC Industrial Tract	City of Sebastian / Indian River County	75.78
96-043-P7A	St. Sebastian PUD	Indian River County / City of Sebastian	310.89
96-044-P7A	Round Island South	Indian River County	31.10
98-057-P8A	Harmony Oaks	Indian River County	89.63
98-058-P8A	Oyster Bar Salt Marsh	Indian River County	100.20
99-055-P9A	Oslo Riverfront South	Indian River County	66.23
99-056-P9A	North Sebastian C.A. Addition	Indian River County	18.72
01-055-FF1	Hallstrom Farmstead	Indian River County	92.71
01-154-FF1	Lost Tree Island	Indian River County / Town of Indian River Shores / City of Vero Beach	507.61
02-058-FF2	Kroegel Homestead	Indian River County	2.61
03-044-FF3	St. Sebastian River Greenway	Marine Resources Council	7.88
03-084-FF3	Orca South Link	Indian River County	6.64
04-025-FF4	Ansinn Tract	Indian River County	27.09
05-038-FF5	Russell Grove River Buffer	Indian River County	47.26
05-039-FF5	Jones' Pier	Indian River County	16.05
06-037-FF6	ORCA Diamond Tract	Indian River County	72.71
07-030-FF7	Fellsmere Trailhead Preserve	City of Fellsmere	85.70
07-039-FF7	South Prong Preserve	Indian River County	37.48
08-003-WW1	Sebastian Working Waterfront Collaborative	City of Sebastian	2.35
11-050-FF11	Sebastian Harbor Preserve	Indian River County	163.00
<b>Jackson County</b>			
95-077-P56	Merritt's Mill Pond	Jackson County	29.85
03-066-FF3	Marianna Performing Arts Park	City of Marianna	2.50
<b>Lake County</b>			
94-029-P4A	Minneola Park and Lake Scenic Trail	City of Minneola	13.45
95-041-P56	Lake Dora Recreation Park	City of Tavares	102.30
96-007-P7A	Old Dixie Highway Park	Town of Lady Lake	0.96
96-015-P7A	Tavares Elementary School Park	City of Tavares	10.62
03-086-FF3	PEAR Park Gateway	Lake County	50.78

Project #	Project Name	Recipient	Acres
<b>Lake County (Continued)</b>			
03-104-FF3	Leesburg Greenway Trail	City of Leesburg	507.25
04-028-FF4	Mount Dora Recreation and Nature Park	City of Mount Dora	13.28
04-030-FF4	Ferndale Preserve on Lake Apopka	Lake County	192.89
07-056-FF7	Inland Groves	City of Clermont	128.13
08-070-FF8	Inland Groves - Phase II	City of Clermont	91.73
11-007-FF11	Lake May Reserve	Lake County	14.00
16-005-UA17	West Lake Wetlands	City of Clermont	2.32
<b>Lee County</b>			
91-007-P1A	Pine Island Eagle Habitat	Lee County	107.00
92-015-P2A	Hickey Creek Mitigation Park	Lee County	729.37
93-019-P3A	Silver Key	City of Sanibel	46.94
95-003-P56	Gulfside Park Addition	City of Sanibel	22.34
96-046-P7A	Cultural and Environmental Learning Center	Town of Fort Myers Beach	2.77
99-029-P9A	East Riverside Neighborhood Park	City of Fort Myers	3.54
01-031-FF1	Caloosahatchee Creeks Preserve	Lee County	1,116.00
01-039-FF1	Pond Apple Park	City of Sanibel	8.60
02-072-FF2	San Carlos Bay - Bunche Beach Preserve	Lee County	727.00
02-098-FF2	Newton Beach Park	Town of Fort Myers Beach	0.80
03-059-FF3	City of Bonita Springs Island Park	City of Bonita Springs	1.68
03-060-FF3	Prairie Pines Preserve Addition	Lee County	320.05
04-031-FF4	Wild Turkey Strand Preserve	Lee County	2,040.55
07-047-FF7	Pine Island at Matlacha Pass	Sarasota Conservation Foundation	229.39
08-012-FF8	Galt Preserve	Lee County	105.22
<b>Leon County</b>			
94-034-P4A	Lafayette Heritage Trail	City of Tallahassee	795.14
95-034-P56	Governor's Park	City of Tallahassee	335.27
95-036-P56	Okeehoopkee Prairie	Leon County	26.17
95-037-P56	Lake Munson Preserve	Leon County	67.60
99-083-P9A	Timberlane Ravine	City of Tallahassee	57.27
00-035-P10	Jackson View	Leon County	44.52
01-152-FF1	St. Marks Headwaters	Leon County	426.29
02-110-FF2	Tallahassee Junction	City of Tallahassee	20.61
04-056-FF4	Magnolia Ravine	City of Tallahassee	8.99
04-067-FF4	Copeland Sink	Leon County / Apalachee Land Conservancy	167.87
05-010-FF5	Capital Cascades Trail Segment 4	City of Tallahassee	7.22
05-011-FF5	St. Marks Headwaters - Booth Phase II	Leon County	160.52
05-075-FF5	Timberlane Ravine - Phase II	City of Tallahassee	16.02
06-114-FF6	Dr. Charles Billings Greenway	City of Tallahassee	24.42
07-102-FF7	Fred George Greenway	Leon County	158.17
<b>Levy County</b>			
92-003-P2A	Yankeetown W R Park	Town of Yankeetown	2.43
93-004-P3A	Yankeetown Wilderness Addition	Town of Yankeetown	0.96
98-102-P8A	Devil's Hammock - Phase I	Levy County	3,265.32
00-018-P10	Withlacoochee Gulf Pathways	Town of Yankeetown	422.46
01-080-FF1	Cedar Key Cemetery Point	City of Cedar Key	4.65

Project #	Project Name	Recipient	Acres
<b>Manatee County</b>			
94-024-P4A	Manatee Headwaters at Duette	Manatee County	2,211.74
96-029-P7A	Palmetto Estuary Preservation Project	City of Palmetto	11.75
98-006-P8A	Grassy Point Preserve	City of Holmes Beach	33.00
98-008-P8A	Riverview Pointe	Manatee County	9.07
98-009-P8A	1912 Cortez Schoolhouse and Nature Preserve	Manatee County	3.95
01-004-FF1	Bennett Park	Manatee County	152.83
02-006-FF2	Robinson Preserve	Manatee County	459.60
03-075-FF3	Moody Branch	Manatee County	946.35
04-041-FF4	The Conservatory	Manatee County	55.42
05-026-FF5	Hidden Harbour	Manatee County	107.87
07-001-FF7	Neal Preserve	Manatee County	7.84

<b>Marion County</b>			
92-033-P2A	Heritage Nature Conservancy (PKA O'Neal Site)	City of Ocala	11.24
92-045-P2A	Silver Creek Property	Marion County	220.00
95-009-P56	Scott Springs	City of Ocala	23.74
95-033-P56	Dunnellon Municipal Park	City of Dunnellon	2.77
98-043-P8A	Fort King	City of Ocala / Marion County	22.50
07-022-FF7	Blue Run of Dunnellon Park	City of Dunnellon	32.44

<b>Martin County</b>			
91-029-P1A	Gomez Avenue	Martin County	33.61
91-031-P1A	Kiplinger Site	Martin County	79.60
92-035-P2A	Otter Creek	Martin County	35.94
92-036-P2A	Beachwalk/Pasley	Martin County	10.17
93-014-P3A	Lake Okeechobee Ridge	Martin County	218.76
94-019-P4A	Rocky Point	Martin County	23.81
94-045-P4A	Stuart Beach Addition	Martin County	2.90
96-038-P7A	FIT Site	Martin County	54.42
98-045-P8A	Haney Creek	City of Stuart	73.53
99-022-P9A	Poppleton Creek Watershed	City of Stuart	24.73
00-011-P10	Santa Lucea	Martin County	10.40
01-081-FF1	Bonair Beach	Town of Jupiter Island	45.60
01-133-FF1	Delaplane Peninsula Blueway	Martin County Regional Land Trust	52.17
03-003-FF3	Bob Graham Beach Addition	Martin County	5.50
03-004-FF3	Jensen Beach	Martin County	94.30
03-092-FF3	Pal Mar East - Phase I	Martin County	692.22
04-046-FF4	Pal Mar East - Phase II	Martin County	830.55
08-047-FF8	Clifton S. Perry Beach	Martin County	16.50

<b>Miami-Dade County</b>			
91-001-P1A	Deering Estates Addition	Miami-Dade County	35.96
94-040-P4A	Village Green	Village of Key Biscayne	9.49
95-021-P56	Hattie Bauer Hammock	Miami-Dade County	14.40
95-039-P56	Oleta River Corridor	Miami-Dade County	2.51
96-037-P7A	County Line Scrub	Miami-Dade County	15.02
98-023-P8A	Biscayne Coastal Wetlands	Miami-Dade County	424.45
98-028-P8A	Spring Garden Point on the Miami River	Miami-Dade County / City of Miami	1.20
98-046-P8A	Sunny Isles Beach Oceanfront Park	City of Sunny Isles Beach	1.87
00-022-P10	Tree Island Park	Miami-Dade County	120.00
00-053-P10	Pincrest Parrot Jungle	City of Pincrest	13.38
01-043-FF1	Deering Estate-Cutler Glade Rehydration Addition	Miami-Dade County	9.66
01-119-FF1	Boystown/Camp Matecumbe	Miami-Dade County	20.37

Project #	Project Name	Recipient	Acres
<b>Miami-Dade County (Continued)</b>			
03-019-FF3	West Kendall District Park Add	Miami-Dade County	12.15
05-042-FF5	C100/Bayfront Property (Haas)	Village of Palmetto Bay	3.57
06-025-FF6	Fern Isle Park Expansion	City of Miami	6.00
08-005-FF8	Doral North Park - Phase II	City of Doral	15.00
16-006-UA17	Hampton Lane	Village of Key Biscayne	0.19
16-007-UA17	Losner Park	City of Homestead	0.88

<b>Monroe County</b>			
91-041-P1A	Coco Plum Beach	Monroe County	6.03
93-001-CS1	Rate of Growth Controls	Monroe County	62.80
93-002-CS1	Recreational L.O.S. Standards	Monroe County	19.50
95-001-CS3	Recreation and Open Space Element	Monroe County	14.50
98-097-P8A	Berg Property	City of Key West	6.85
99-001-M.C.	Monroe County Comp. Land Authority #1	Monroe County	0.02
99-002-MCC	Monroe County Comp. Land Authority #2	Monroe County	19.70
99-003-MCC	Monroe County Comp. Land Authority #3	Monroe County	15.50
99-004-MCC	Monroe County Comp. Land Authority #4	Monroe County	0.90
99-005-MCC	Monroe County Comp. Land Authority #5	Monroe County	168.40
99-006-MCC	Monroe County Comp. Land Authority #6	Monroe County	74.10
99-007-MCC	Monroe County Comp. Land Authority #7	Monroe County	7.10
99-008-MCC	Monroe County Comp. Land Authority #8	Monroe County	10.30
99-009-MCC	Monroe County Comp. Land Authority #9	Monroe County	72.90
99-010-MCC	Monroe County Comp. Land Authority #10	Monroe County	20.20
99-011-MCC	Monroe County Comp. Land Authority #11	Monroe County	4.40
99-012-MCC	Monroe County Comp. Land Authority #12	Monroe County	4.50
99-013-MCC	Monroe County Comp. Land Authority #13	Monroe County	0.90
99-014-MCC	Monroe County Comp. Land Authority #14	Monroe County	3.20
99-015-MCC	Monroe County Comp. Land Authority #15	Monroe County	1.00
99-016-MCC	Monroe County Comp. Land Authority #16	Monroe County	16.30
99-017-MCC	Monroe County Comp. Land Authority #17	Monroe County	3.10
99-018-MCC	Monroe County Comp. Land Authority #18	Monroe County	3.10
99-019-MCC	Monroe County Comp. Land Authority #19	Monroe County	3.90
99-020-MCC	Monroe County Comp. Land Authority #20	Monroe County	17.50
99-021-MCC	Monroe County Comp. Land Authority #21	Monroe County	9.40
99-022-MCC	Monroe County Comp. Land Authority #22	Monroe County	5.90
99-023-MCC	Monroe County Comp. Land Authority #23	Monroe County	2.60
99-024-MCC	Monroe County Comp. Land Authority #24	Monroe County	6.85
01-001-CS7	City of Key Colony Beach	City of Key Colony Beach	0.55
01-058-FF1	North Village Neighborhood Park	Village of Islamorada	3.63
03-034-FF3	Key West Botanical Gardens	City of Key West	4.74



Project #	Project Name	Recipient	Acres
<b>Monroe County (Continued)</b>			
04-001-FF4	Marathon Waterfront Park	City of Marathon	7.66
05-009-FF5	Green Turtle Hammock	Islamorada, Village of Islands	8.74
08-028-FF8	Key Tree Cactus	Village of Islamorada	9.05

<b>Nassau County</b>			
92-011-P2A	North Beach Park	City of Fernandina Beach	0.80
95-018-P56	Seaside Park	City of Fernandina Beach	2.66
95-059-P56	Egan's Creek Greenway -Phase I	City of Fernandina Beach	126.18
96-013-P7A	Egan's Creek Greenway -Phase II	City of Fernandina Beach	111.98
01-025-FF1	Egan's Creek Greenway - Phase III	City of Fernandina Beach	36.56
03-041-FF3	Goffinsville - Nassau River Park	Nassau County	19.70
04-026-FF4	American Beach Historic Park - Nelson Parcels	Nassau County	1.51

<b>Okaloosa County</b>			
94-014-P4A	Turkey Creekwalk - Barnett	City of Niceville	7.09
96-004-P7A	Oak Tree Park	City of Mary Esther	13.85
98-020-P8A	Okaloosa Island Marler Park	Okaloosa County	2.20
00-004-P10	Oak Tree Nature Park - Phase II	City of Mary Esther	11.30
00-067-P10	Miracle Strip Park on the Sound	City of Fort Walton Beach	2.42
04-006-FF4	The Shore at Crystal Beach	City of Destin	0.65
08-007-FF8	Captain Royal Melvin Park	City of Destin	0.77
11-015-FF11	Turkey Creek Walk Park, Phase IV-Safe Mini Storage	City of Niceville	77.07

<b>Orange County</b>			
92-010-P2A	Kelly Park Expansion	Orange County	39.90
93-009-P3A	Airport Lakes Park	City of Orlando	56.37
95-053-P56	Minnehaha Park Canal	City of Maitland	1.88
96-031-P7A	Oakland Community Nature Park	Town of Oakland	92.55
01-029-FF1	Eagle Nest Cornerstone Park	City of Orlando	100.00
01-053-FF1	Orange County Natural Resource Center	Orange County	399.63
01-056-FF1	Kelly Park Addition	Orange County	109.39
01-083-FF1	Parcel 105	Orange County	1,133.10
03-002-FF3	Fort Christmas Community Park Addition	Orange County	116.92
04-051-FF4	Howell Branch Preserve - Phase II	City of Winter Park	10.50
11-012-FF11	Tucker Ranch Heritage Park	City of Winter Garden	208.96
11-014-FF11	Kelly Park 3rd Addition - Camp Joy Property	Orange County	33.75

<b>Orange-Osceola County</b>			
91-009-P1A	Split Oak Mitigation Park	Orange County / Osceola County	1,689.00

<b>Osceola County</b>			
95-011-P56	Lake Lizzie Recreation Park	Osceola County	918.70
98-065-P8A	Shingle Creek Recreational Preserve	Osceola County / City of Kissimmee	73.24
01-143-FF1	Shingle Creek Recreational Preserve North	Osceola County	159.76
03-029-FF3	Shingle Creek	Osceola County	40.45

Project #	Project Name	Recipient	Acres
<b>Osceola County (Continued)</b>			
03-030-FF3	Lake Tohopekaliga Park and Marina	Osceola County	12.00
06-015-FF6	Shingle Creek Recreational Preserve Center	Osceola County / City of Kissimmee	16.14

<b>Palm Beach County</b>			
91-022-P1A	Seacrest Scrub	Palm Beach County / City of Boynton Beach	53.70
92-020-P2A	Osborne Site	City of Boca Raton	24.15
92-022-P2A	Olympia York/Serenoa Glades	City of Boca Raton	114.60
92-024-P2A	Section 16 Addition	City of West Palm Beach	318.77
93-008-P3A	Rosemary Scrub	Palm Beach County / City of Boynton Beach	13.59
93-015-P3A	Section 10 Addition	City of West Palm Beach	591.22
93-017-P3A	South Bay Park	City of South Bay	19.35
93-020-P3A	Hidden Valley North/Rosemary Ridge Preserve	City of Boca Raton	6.29
94-005-P4A	Delray Oaks	Palm Beach County / City of Delray Beach	24.58
94-021-P4A	Section 15 Addition	City of West Palm Beach	209.10
95-007-P56	Sandoway House	City of Delray Beach / Palm Beach County	0.36
95-046-P56	Juno Hills Oceanfront	Town of Juno Beach/ Palm Beach County	42.43
96-011-P7A	Frenchman's Forest	Palm Beach County / City of Palm Beach Gardens	149.09
98-066-P8A	Hungryland Slough Tract - Bee Line Corridor Natural Area	Palm Beach County	734.00
98-067-P8A	Bee Line Corridor Natural Area	Palm Beach County	1,806.73
99-015-P9A	High Ridge Scrub Addition	Palm Beach County	12.76
99-028-P9A	Bee Line Corridor - Phase II	Palm Beach County	918.88
00-029-P10	Harbor View Park	Town of Jupiter	1.50
01-016-FF1	Section 16 West Addition to the West Palm Beach Preserve	City of West Palm Beach	271.18
01-033-FF1	North Jupiter Flatwoods	Palm Beach County / Town of Jupiter	132.54
01-035-FF1	Overlook Scrub	Palm Beach County / Town of Hypoluxo	92.17
01-036-FF1	Lake Park Scrub Natural Area	Palm Beach County / Town of Lake Park	50.20
01-037-FF1	Acreage Pines Natural Area	Palm Beach County	125.37
01-100-FF1	Ombres Property	City of West Palm Beach	3.75
02-051-FF2	Blue Lake Scrub	Palm Beach County / City of Boca Raton	78.70
02-100-FF2	Limestone Creek	Palm Beach County	22.06
03-105-FF3	Cypress Creek Natural Area	Palm Beach County	598.76
04-023-FF4	Jaycee Park Acquisition	City of Boynton Beach	5.42
04-049-FF4	Cypress Creek Natural Area	Palm Beach County	426.87
04-062-FF4	Old School Square Addition	City of Delray Beach	1.09
05-028-FF5	Indian Lakes Natural Area	Palm Beach County	609.82
06-017-FF6	Delaware Scrub Natural Area	Town of Jupiter / Palm Beach County	15.80
06-041-FF6	Susan DuBois Kindt Estate	Palm Beach County	1.18

Project #	Project Name	Recipient	Acres
<b>Palm Beach County (Continued)</b>			
07-010-FF7	Cypress Creek Preserve - Phase III	Palm Beach County	150.00
08-001-FF8	Cypress Creek Natural Area - Phase IV	Palm Beach County	251.23
11-001-FF11	Cypress Creek Natural Area - Phase V	Palm Beach County	160.00
<b>Pasco County</b>			
91-039-P1A	Boyce/Wetstone	Pasco County	1,685.00
94-007-P4A	Pithlachascotee River Park	City of New Port Richey	83.50
95-067-P56	Port Richey Waterfront Park	City of Port Richey	7.66
04-014-FF4	Strauber Memorial Highway Coastal Park	Pasco County	598.03
07-089-FF7	Upper Pithlachascotee River Preserve	Pasco County	122.59
08-039-FF8	Pasco Palms	Pasco County	115.32
11-047-FF11	Morsani Ranch	Pasco County	598.63
<b>Pinellas County</b>			
91-002-P1A	North Anclote	City of Tarpon Springs	56.50
92-007-P2A	Brooker Creek	Pinellas County	223.49
93-023-P3A	Redington Shores Nature Refuge	Town of Redington Shores	1.77
94-004-P4A	Brooker Creek Enhancements	Pinellas County	86.20
94-010-P4A	Waterfront Park	City of Gulfport	1.43
94-011-P4A	Indian Shores Nature Refuge	Town of Indian Shores	3.10
94-017-P4A	Bayside Park	City of Belleair Beach	1.75
95-001-P56	South Pasadena Habitat Extension	City of South Pasadena	2.91
95-004-P56	Marina Park Addition	City of Safety Harbor	3.55
95-022-P56	Indian Rocks Beach Nature Preserve	City of Indian Rocks Beach	8.80
96-026-P7A	McKay Creek Greenway	Pinellas County	54.94
98-005-P8A	Mobbly Bayou Wilderness Preserve	City of Oldsmar	77.00
99-007-P9A	Sunset Vista Trailhead	City of Treasure Island	1.49
99-024-P9A	Madeira Beach Causeway	City of Madeira Beach	1.56
00-026-P10	Mobbly Bayou	City of Oldsmar / Pinellas County	13.50
00-042-P10	Clam Bayou Park Expansion	City of St. Petersburg	8.13
01-015-FF1	Kapok Wetland and Floodplain Restoration	City of Clearwater	36.69
01-022-FF1	Wall Springs	Pinellas County	32.07
01-144-FF1	Historic Bayview	City of Clearwater	4.41
02-035-FF2	Wall Springs Coastal Addition	Pinellas County	84.37
03-006-FF3	Brooker Creek Preserve	Pinellas County	259.43
03-080-FF3	Mobbly Bayou Preserve	City of Oldsmar / Pinellas County	4.61
04-021-FF4	Kumar Property	City of Oldsmar	5.52
05-017-FF5	Wall Springs Coastal Addition	Pinellas County	4.08
07-054-FF7	Lake Chautauqua Equestrian and Nature Trail	City of Clearwater	26.98
07-097-FF7	Weaver Park	City of Dunedin	14.60
08-009-FF8	Wall Springs Coastal Addition IV	Pinellas County	7.12
11-020-FF11	Brooker Creek Preserve Wilde Lands	Pinellas County	439.93
16-004-UA17	Hammock Park Expansion	City of Dunedin	8.70

Project #	Project Name	Recipient	Acres
<b>Polk County</b>			
92-002-P2A	Lake Bonny Community Park	City of Lakeland	111.00
92-006-P2A	Lake Howard	City of Winter Haven	13.30
95-028-P56	Mount Pisgah - Peace River	Polk County	41.96
96-001-CS4	Green Swamp Greenway - Phase II	Polk County	591.95
99-049-P9A	Lakeland Highlands Scrub	Polk County	551.09
04-033-FF4	Lake Hartridge Nature Park	City of Winter Haven	6.72
04-075-FF4	MacKay Garden and Lakeside Preserve	City of Lake Alfred	112.28
05-008-FF5	Bok Tower Sanctuary	Green Horizon Land Trust, Inc.	255.90
06-020-FF6	Gator Creek Preserve	Polk County	1,621.92
<b>Putnam County</b>			
01-136-FF1	Melrose Heritage Park	Putnam County	2.07
01-137-FF1	Tanglewyde Center	Putnam County	25.00
08-020-FF8	Georgetown Riverside Park	Putnam County	25.28
08-084-FF8	Nine Mile Swamp Park and Trail	Putnam County / Putnam Land Conservancy	1,238.00
<b>Santa Rosa County</b>			
94-012-P4A	Riverwalk Expansion	City of Milton	10.88
00-082-P10	Russell Harber Landing Expansion	City of Milton	3.51
<b>Sarasota County</b>			
92-009-P2A	Myakkahatchee Creek Environmental Park	City of North Port	34.68
93-003-P3A	Myakkahatchee Creek Environmental Park III	City of North Port	56.21
94-025-P4A	Myakkahatchee Creek Environmental Park	City of North Port	4.94
96-041-P7A	Hog Creek Habitat Restoration	City of Sarasota	0.99
98-072-P8A	Oak Shores Reclamation	Sarasota County	7.14
99-076-P9A	Lemon Bay Preserve	Sarasota County	20.32
99-077-P9A	North River Road Preserve	Sarasota County	213.41
00-019-P10	Manasota Scrub Preserve	Sarasota County	108.40
01-008-FF1	Pocono Trails Preserve	Sarasota County	8.00
01-028-FF1	Curry Creek Preserve	Sarasota County	80.40
01-045-FF1	Venice Gulf View Park	City of Venice	0.90
02-027-FF2	Red Bug Slough	Sarasota County	72.10
02-034-FF2	Wilson Family Park	Sarasota County	49.71
05-012-FF5	Lemon Bay Park Addition	Sarasota County	10.65
05-014-FF5	Sleeping Turtles Bay Preserve at Osprey	Sarasota County	211.23
05-018-FF5	Bay Preserve at Osprey	Sarasota Conservation Foundation	4.39
06-004-FF6	Blackburn Point Park Addition	Sarasota County	10.89
08-024-FF8	Legacy Park	City of Venice	10.34
<b>Seminole County</b>			
95-020-P56	Twin Rivers II Preserve	City of Oviedo	34.37
03-055-FF3	Jetta Point Property/Rolling Hills	Seminole County	42.43
03-088-FF3	Winter Miles	City of Oviedo	151.67
06-008-FF6	St. Johns Historic Property (Lansing Property)	Seminole County	77.04
16-008-UA17	Round Lake Park	City of Oviedo	0.50
<b>St. Johns County</b>			
98-003-P8A	Southeast Intracoastal Waterway Park	St. Johns County	82.85
99-002-P9A	St. Johns River Park	St. Johns County	54.83

Project #	Project Name	Recipient	Acres
<b>St. Johns County (Continued)</b>			
01-009-FF1	Moultrie Creek/Intracoastal Tract	St. Johns County	23.00
03-038-FF3	Fort Mose Historic State Park Addition	St. Johns County	7.29
04-064-FF4	Canopy Shores	St. Johns County	33.70
05-032-FF5	Nease Beachfront Park	St. Johns County	3.21
05-034-FF5	Beluthahatchee Park	St. Johns County	1.97
06-033-FF6	Mussallem Beachfront Park	St. Johns County	8.33
06-034-FF6	Vilano Beach Park	St. Johns County	1.81
08-018-FF8	Ocean Hammock Park	City of St. Augustine Beach	11.43
08-019-FF8	Usina Intracoastal Park	St. Johns County	1.51
08-044-FF8	Cora C. Harrison	Town of Hastings	13.61
16-014-UA17	Ocean Hammock Park	City of St. Augustine Beach	10.61

<b>St. Lucie County</b>			
93-024-P3A	Bear Point Sanctuary	St. Lucie County	13.33
94-003-P4A	Kings Island Preserve	St. Lucie County	169.65
94-022-P4A	Ocean Bay	St. Lucie County	26.47
95-031-P56	Brinkhaven at Oak Hammock Acres	City of Port St. Lucie	12.81
95-052-P56	Indrio North Savannas	St. Lucie County	219.93
95-062-P56	Walton Scrub Homestead	St. Lucie County / City of Port St. Lucie	33.48
95-065-P56	Middle Cove Park	St. Lucie County	107.42
96-017-P7A	St. Lucie Pinelands	St. Lucie County	746.38
98-071-P8A	Bluefield Ranch	St. Lucie County	3,284.56
99-001-P9A	Pepper Park	St. Lucie County	73.39
99-020-P9A	Paleo Hammock	St. Lucie County	80.52
99-025-P9A	North Fork Addition	St. Lucie County	14.92
01-023-FF1	Westmoreland River Park	City of Port St. Lucie / St. Lucie County	31.79
01-067-FF1	Sheraton Plaza Preserve	St. Lucie County	65.12
01-069-FF1	Indrio Scrub Preserve	St. Lucie County	13.34
01-075-FF1	Ancient Oaks	St. Lucie County	145.18
01-082-FF1	St. Lucie Village Heritage Park	Town of St. Lucie Village	75.81
01-098-FF1	North Fork of the St. Lucie River - Phase II	St. Lucie County	34.69
02-056-FF2	Ten Mile Creek East	St. Lucie County	98.80
02-071-FF2	North Fork of the St. Lucie River - Phase III	St. Lucie County	60.70
02-091-FF2	Indrio Blueway Buffer	St. Lucie County	105.60
03-069-FF3	Capron Trail Park	St. Lucie County	120.01
03-079-FF3	Ten Mile Creek West	St. Lucie County	8.54
04-044-FF4	Paleo Hammock Addition	St. Lucie County	350.18
04-045-FF4	Heathcote Botanical Park	St. Lucie County	63.81
05-069-FF5	Hackberry Hammock	St. Lucie County	35.01
06-060-FF6	Indrio North Savannahs Two	St. Lucie County	8.63
07-027-FF7	Harbor Branch Preserve	St. Lucie County	248.78
07-080-FF7	Jetty Oceanfront Park Expansion	City of Fort Pierce	1.62
07-088-FF7	Moore's Creek Linear Park	City of Fort Pierce	5.04
08-057-FF8	Becker Preserve	St. Lucie County	12.36
11-054-FF11	Petravice Preserve (North Fork St. Lucie River Phase Four)	St. Lucie County	24.25
16-012-UA17	Myers Stickel Property	St. Lucie County	24.25
16-013-UA17	Cypress Creek Preserve	St. Lucie County	783.41

<b>Sumter County</b>			
93-010-P3A	Lake Panasoffkee Headwaters	Sumter County	157.80

Project #	Project Name	Recipient	Acres
<b>Suwannee County</b>			
92-030-P2A	Little River Springs	Suwannee County	124.82
08-066-FF8	Live Oak Heritage Park	City of Live Oak	103.82

<b>Taylor County</b>			
07-051-FF7	Keaton Beach Coastal Park	Taylor County	43.45

<b>Volusia County</b>			
91-042-P1A	Lake Beresford	Volusia County	200.00
91-043-P1A	Colby/Alderman	Volusia County	108.00
92-023-P2A	Indian River Lagoon Preserve	City of New Smyrna Beach	73.93
93-021-P3A	Gemini Springs	Volusia County	208.56
94-033-P4A	Ponce Preserve	Town of Ponce Inlet	39.04
94-038-P4A	Boy Scouts Property	City of DeLand	4.72
95-024-P56	Painters Pond	City of DeLand	1.13
96-039-P7A	Green Springs	Volusia County	47.38
98-010-P8A	North Peninsula In-holdings	Volusia County	27.13
98-036-P8A	Lake Helen Greenway	City of Lake Helen	17.35
98-112-P8A	North Beach Community Park	City of New Smyrna Beach	13.97
01-032-FF1	Daytona Beach Historic Pier and Boardwalk	City of Daytona Beach	1.95
01-071-FF1	Doris Leeper Spruce Creek	Volusia County	80.10
01-129-FF1	Town Center	City of Port Orange	0.91
02-003-FF2	Catholic Diocese Tract	Volusia County	150.00
02-094-FF2	Town Center Marcantonio Property	City of Port Orange	0.73
03-064-FF3	Ponce Preserve Inlet	Town of Ponce Inlet	3.24
04-005-FF4	Doris Leeper Spruce Creek - Phase II	Volusia County	61.20
04-018-FF4	Russell Property	City of Port Orange	18.00
04-060-FF4	Timucuan Oaks Botanical Gardens	Town of Ponce Inlet	8.08
07-020-FF7	Esther Street Beachfront Park	City of New Smyrna Beach	2.49
08-004-FF8	Stanaki Property	City of Port Orange	224.29

<b>Wakulla County</b>			
93-029-P3A	Shell Point Beach	Wakulla County	2.75
94-041-P4A	Purify Creek Acquisition Project	Wakulla County	209.35
98-110-P8A	Panacea Mineral Springs	Wakulla County	4.45
07-057-FF7	Big Bend Maritime Center	Wakulla County	5.31

<b>Walton County</b>			
02-099-FF2	Garfield Access Addition	Walton County	0.92
03-001-FF3	Stallworth Lake Preserve	Walton County	2.87
08-006-FF8	Town Center Park and Preserve	Walton County	6.58
16-015-UA17	City Center Barrier Free Park	City of Freeport	4.02

<b>Washington County</b>			
96-034-P7A	Holmes Creek Boat Ramp	Washington County	12.05

<b>TOTAL ACRES - FCT GRANTS</b>			<b>96,334.55</b>
---------------------------------	--	--	------------------

# SUMMARY OF FINANCIAL ACTIVITIES 2019-2020

## Florida Communities Trust

### FLORIDA FOREVER PROGRAM – FIXED CAPITAL OUTLAY BUDGET

06/30/2019 Year End Balance – FCT, Parks and Open Space	\$ 13,926,168.05
06/30/2019 Year End Balance – Stan Mayfield Working Waterfronts	\$ 4,267,413.57
<b>06/30/2019 YEAR END BALANCE</b>	<b>\$ 18,193,581.62</b>

**FY 2019-20 Appropriations:**

FY 2019-20 Parks and Open Space	\$ -
FY 2019-20 Stan Mayfield Working Waterfronts	\$ 1,500,000.00

Total Appropriation, including fiscal year-end balance **\$ 19,693,581.62**

**Expenditures During FY 2019-2020**

Expenditures for Land Acquisition Activities (Parks and Open Space)	\$ (699,776.24)
Expenditures for Land Acquisition Activities (Stan Mayfield Working Waterfronts)	\$ (1,453,648.66)

**LESS FY 2019-20 EXPENDITURES** **\$ (2,153,424.90)**

**6/30/2020 YEAR END BALANCE** **\$ 17,540,156.72**

### FLORIDA COMMUNITIES TRUST PROGRAM (FCT) - OPERATING BUDGET

FCT program operations are funded from the Land and Recreation Grants Section within DEP

**Total Cost of FCT Operations during FY 2019-20**

Salaries and Benefits	\$ 287,085.13
Other Personal Services/Contracted Services (temporary staff/services)	\$ 35,638.15
Expenses	\$ 7,742.76
**Indirect Costs	\$ 139,121.45
<b>TOTAL</b>	<b>\$ 469,587.49</b>

\*\*The Indirect Cost amount is calculated by taking FCT's total salaries and benefits multiplied by the FY 2019-20 indirect cost rate assigned to Land and Recreation. This calculation provides an estimate of the indirect costs (overhead, administrative costs) associated with the program.

# FLORIDA COMMUNITIES TRUST BOARD MEMBERS

## Shawn Hamilton



Shawn Hamilton, Interim Deputy Secretary for Land and Recreation, joined the Department of Environmental Protection in 2007 and served as Northwest District Director since 2011. He was responsible for environmental permitting, compliance, emergency response and environmental education for DEP's regulatory programs within the 16 counties of the Florida Panhandle.

Shawn is a graduate of Troy State University. Before joining DEP, he was Director of Business Operations for CTS - America in Pensacola. He also served as an Advanced Systems Engineer for EDS in Montgomery, Alabama. Shawn is a U.S. Air Force combat veteran.

## Lynda Bell



Lynda Bell served on the Miami-Dade County Commission from 2010-2014 where she was the Vice Chair from 2012-2014. She has chaired the Finance Committee, the Value Adjustment Board, the Sports Commission and the Port of Miami Committee. Lynda was also active on both Florida Association of Counties and National Association of Counties.

Prior to serving on the County Commission, Lynda served as a Councilwoman, Vice Mayor and the first and only female Mayor of the City of Homestead. She has been recognized for her many accomplishments, including the "In the Company of Women" award in the governmental category. She received the "I am Blessed" award, was recognized by the Association of Public Administrators with the "Woman of Distinction" award, won the Chamber of Commerce "Athena" award, and was given the Miami- Dade Farm Bureau Advocacy award.

Serving FCT as the Former Elected Official of a County Government, Lynda earned a Bachelor of Science degree in Supervision and Management from Miami-Dade College School of Business and has been married to Mark Bell for 35 years. They have three daughters and 12 grandchildren. After residing in Homestead for more than 39 years, they relocated to the Lake Talquin area in Leon County.

## Gregory Jones



Gregory Jones has over 19 years of experience in resort development and management in the State of Florida. He is currently the Senior Project Manager for WCI Communities Inc., a Lennar Company. During the last decade, he has been actively involved in developing a balance between sustainable growth in his community while establishing a healthy environment to ensure a long-term habitat plan for the endangered Perdido Key Beach Mouse. In addition, Gregory has been an active participant of local community efforts by currently residing on the Tourism Development Council and West End Advisory Boards for Escambia County in addition to serving as a current board member on six community residential boards.

Gregory serves on the FCT Board as Representative of the Development Industry.

## Erick Lindblad



Erick Lindblad has served as the Executive Director of the Sanibel-Captiva Conservation Foundation (SCCF) since 1986. He has been instrumental in SCCF's acquisition of over 2,000 acres of Wildlife Preserve areas on and around Sanibel and Captiva. In 2002, he oversaw the establishment of SCCF's Marine Laboratory.

Erick has coordinated and actively participated in land management activities including invasive non-native plant control, prescribed burning (Division of Forestry Burn Manager Certification), gopher tortoise management and surface water management projects. Land acquisition has been accomplished by a variety of means, including fee simple, bargain sale, development agreement and donation.

As part of his commitment to the sustainable development of Southwest Florida, Erick served on Conservation 20/20, Lee County's Conservation Land Acquisition and Stewardship Advisory Council and the Land Management Subcommittee. He also was appointed by the Lee County Board of County Commissioners to serve as the county's representative on the first Babcock Ranch Inc. Board, which worked to develop the initial management plan for the state's 71,000-acre Babcock Ranch Preserve in Lee and Charlotte counties. He served on the Board of the International Osprey Foundation, the Caloosahatchee River Citizens Association and the Charlotte Harbor National Estuary Program Technical Advisory Committee.

Erick has served on various City of Sanibel committees over the years including the Budget Review Committee, Wildlife Committee, Interior Wetlands Study Committee, and the Algae Task force. He was awarded the Walter Klie Lifetime Achievement Award from the Sanibel-Captiva Islands Chamber of Commerce and Citizen of the Year by The Committee of the Islands. In 2014 SCCF was awarded Florida Conservation Organization of the Year by the Florida Wildlife Federation.

Prior to his tenure at SCCF, he served as Director of Newfound Harbor Marine Institute at Seacamp on Big Pine Key, FL from 1979 to 1986. He graduated in 1974 from Millikin University in Illinois with a B.A. in Biology. He and his wife Ellen have two children and 5 grandsons.

## Vacant

Former Elected Official of a Metropolitan Municipal Government

# FLORIDA COMMUNITIES TRUST

Florida Department of Environmental Protection

3900 Commonwealth Boulevard, MS 115

Tallahassee, Florida 32399-3000

(850) 245-2501

[www.FloridaDEP.gov](http://www.FloridaDEP.gov)

