

Status of Implementation of Agricultural Nonpoint Source Best Management Practices

*Report to the Governor, the President of the
Senate, and the Speaker of the House
Pursuant to s. 403.0675(2), Florida Statutes*

July 1, 2018

Florida Department of Agriculture and Consumer
Services
Office of Agricultural Water Policy

EXECUTIVE SUMMARY

For many years, Florida's farmers and ranchers have taken the lead in adopting the use of Best Management Practices (BMPs) for nutrients, irrigation and water table management, and protection of water resources. This report presents data, required by s. 403.0675(2), Florida Statutes (F.S.), to be delivered annually on the status of implementation of Florida's program of agricultural best management practices.

- The report provides data on the status of implementation of BMPs for producers enrolled in the Florida Department of Agriculture and Consumer Services' (FDACS) BMP program. The results are presented by the areas covered by Basin Management Action Plans identified by the Florida Department of Environmental Protection. The report also provides state-wide data. It is a testament to the environmental stewardship of Florida's agricultural industry that implementation rates are high in all agricultural areas around the state.
- The reported data represent nearly 75% of operations enrolled in the FDACS BMAP program, a value that is reflective of the intensive effort put into data collection by the Office of Agricultural Water Policy field staff, and of the exceptional cooperation of the enrolled producers.
- Based on the responses from enrolled operations, producers are implementing applicable practices at a high rate – more than 99%.

INTRODUCTION

On behalf of the Florida Department of Agriculture and Consumer Services (FDACS), the Office of Agricultural Water Policy (OAWP) is pleased to submit this first report on the status of implementation of Florida's agricultural Best Management Practices (BMPs) program. BMPs are practical measures that farmers, ranchers, and nursery owners can take to reduce the impacts of their fertilizer and water use, and otherwise manage the landscape to help protect water resources. BMPs are developed with economic and technical considerations, and can maintain or even enhance agricultural productivity. Agricultural water quality and quantity BMPs are an integral part of water resource protection. The Florida Legislature has emphasized the importance of BMPs in various statutes, including the Florida Watershed Restoration Act (FWRA – s. 403.067, F.S.). Under the FWRA, the Florida Department of Environmental Protection (FDEP) establishes water quality targets for impaired waters. Nonpoint sources, including agriculture, are addressed by rule-adopted BMPs to help achieve water quality standards and, where applicable, total maximum daily loads.

OAWP works cooperatively with agricultural producers and others pursuant to s. 403.067(7)(c)2., F.S., to develop, adopt, and implement agricultural best management practices (BMPs) for agricultural commodities in Florida. BMPs are adopted by rule and published by FDACS in commodity-specific manuals that cover key aspects of water quality and water conservation, along with other provisions. FDACS has adopted BMPs

for nearly all major agricultural commodities in Florida, as shown on Table 1. Adopted BMPs are initially verified by the FDEP in accordance with s. 403.067(7)(c)3, F.S., before being codified in Title 5M of the Florida Administrative Code (F.A.C.). The annual report on the status of implementation of BMPs for silviculture for 2017 from the Florida Forest Service can be found at:

https://www.freshfromflorida.com/content/download/78966/2320474/SPMP_2017_ImplementationSurveyReport.pdf.

Implementing BMPs benefits both producers and the environment, and demonstrates agriculture's commitment to wise water use and water resource protection. Producers who are implementing BMPs receive a presumption of compliance with state water quality standards for the pollutants addressed by the BMPs. BMPs can also increase production efficiency and reduce costs. Producers who enroll in the BMP program become eligible for cost-share for some BMPs, and for technical assistance with BMP implementation.

Agricultural producers enroll in the BMP program by working with OAWP staff to determine the BMPs that are applicable to their operation, and then submit a Notice of Intent to Implement BMPs (NOI). The NOI form and BMP checklist are incorporated into each manual.

In 2016, the Florida Legislature adopted s. 403.0675(2), F.S., which requires FDACS to submit an annual report on the status of implementation of BMPs. The statute refers to reporting the status of BMP implementation 'pursuant to Basin Management Action Plans', which are the "blueprints" for restoring impaired waters as identified by FDEP; therefore, the information in this report is presented within that context.

The widespread use of BMPs is not well known outside of the agricultural community. Presentation of these data will aid the public in learning about the role agricultural producers play in protecting water quality, how widely these practices are used by producers, and the importance of BMP implementation in protecting water resources in the state.

METHODOLOGY

Agricultural production in Florida is extraordinarily diverse, and ensuring a consistent, statewide dataset for implementation reporting was of primary importance for this report. Data collection was organized to optimize OAWP field staff assistance and to minimize the time required of producers.

The format for reporting on the status of implementation of BMPs represented practices in the categories of Nutrient Management, Irrigation and Water Table Management, and Water Resource Protection. These practices include:

- **Nutrient Management** practices that help determine appropriate source, rate, timing, and placement of nutrients (including both organic and inorganic sources) to minimize impacts to water resources.
- **Irrigation and Water Table Management** practices that address methods for irrigating and managing water tables within production areas to reduce water and nutrient losses to the environment and to maximize the efficient use and distribution of water.
- **Water Resource Protection** practices such as buffers, setbacks, and swales to reduce or prevent the transport of nutrients and sediments from production areas to water resources.

For each of the practices, the status of implementation of BMPs was reported as one of the following:

- “In Use” for BMPs currently being implemented;
- “Planned” for BMPs intended to be implemented within the next 18 months, with the anticipated completion date and explanatory comments if needed;
- “N/A” (Not Applicable) for BMPs not applicable to the operation; or
- “No” for BMPs applicable to the operation but not being implemented nor planned, with explanatory comments.

The inclusion of comments in the responses allowed FDACS staff to analyze the data and make corrections where the comments were not consistent with the reported status.

All producers enrolled in the FDACS BMP program received notices, instructions, and OAWP staff contact numbers for assistance, by email and mail before the data collection effort began as follows:

- Producers in the South Florida Water Management District (SFWMD) with permits issued under Rule Chapter 40E-63, F.A.C. (EAA/C139 area) were not asked to report. The status of implementation for those producers was based on information provided by SFWMD on the status of compliance with those permits.
- Producers who enrolled or had a site visit since April 1, 2017, were not asked to report. The status of implementation for those producers was known to OAWP field staff from that recent contact and was incorporated into the data collection directly by field staff.
- For producers with more than five NOIs, OAWP field staff initiated contact and worked with the producers to complete the report of the status of implementation; the status of implementation for those producers was incorporated into the data collection directly by field staff.
- For producers with five or fewer NOIs, producers were asked to either complete the report on-line, or work with their OAWP field staff contact, identified in the letter or email, for assistance.

Two important points were included in communications with producers about this data collection effort:

- None of the responses to this effort will be used to determine if an individual operation is implementing BMPs. The determination of the status of implementation for any individual operation can only be done on a case-by-case basis in accordance with the Implementation Verification Rule (5M-1.008, F.A.C.).
- Information on the status of implementation for any individual operation is confidential and exempt from public disclosure pursuant to s. 403.067(7)(c), F.S.

The implementation status of all practices within a category (Nutrient Management, Irrigation and Water Table Management, and Water Resource Protection) was aggregated for BMAP areas, the adopted BMP manuals, and statewide. Each practice reported as “In Use” or “Planned” received 1 point; “No” received 0 points; “N/A” practices were excluded from scoring. The sum of the actual scores was then divided into the sum of the potential scores to calculate values for implementation status. The resulting value represents the fraction of 100% implementation of applicable practices for each practice category and area.

The acreages presented in this report are based on the land use mapping done under the direction of OAWP during the development of the Florida Statewide Agricultural Irrigation Demand (FSAID) dataset in 2017 (FSAID4). The mapping and ground-truthing done to support that work provides high quality, current data on agricultural lands, both irrigated and non-irrigated. OAWP is currently developing tools and methods to facilitate ground truthing by OAWP field staff as they conduct everyday operations to further improve data accuracy.

RESULTS

The report results are generated using data from several sources. BMP enrollment data identifies parcels enrolled in OAWP’s BMP program. Active agricultural lands are selected from within those parcels to delineate enrolled agricultural acres. Acres are rounded for reporting purposes. The statewide data collection effort described above provided information on the status of implementation of BMPs. These data sources are combined to calculate the agricultural acreage for which the status of BMP implementation has been reported and the corresponding number of NOIs.

It is important to note that the statewide acreage summary includes data from NOIs both inside and outside of BMAP areas. As a result, statewide acres are greater than the sum of acres for all BMAPs. Further, many producers are enrolled in two or more BMP manuals (NOIs), and data were not collected on the number of acres for each separate commodity.

The data collection effort resulted in status reports for approximately 75% of the enrolled producers in Florida. The status of BMP implementation for this report represents the current status for each NOI for the reporting period. For approximately 80% of the responses, the report was recorded between December 1, 2017, and April

30, 2018. The remaining responses are from the group of recent enrollees or site visits discussed above. Enrolled acres were mapped and accounted for as of December 31, 2017. No information is available for producers who are not enrolled in the FDACS BMP program.

Table 1 provides a summary of the status of implementation of BMPs for each FDACS BMP manual. Table 2 provides a summary of the status of implementation within each BMAP boundary. A one-page summary is also provided for each adopted and pending BMAP area in Florida. This information is also accessible on the website, <https://www.freshfromflorida.com/Divisions-Offices/Agricultural-Water-Policy>.

Table 1. Status of BMP Implementation for Each FDACS BMP Manual for Enrolled Producers

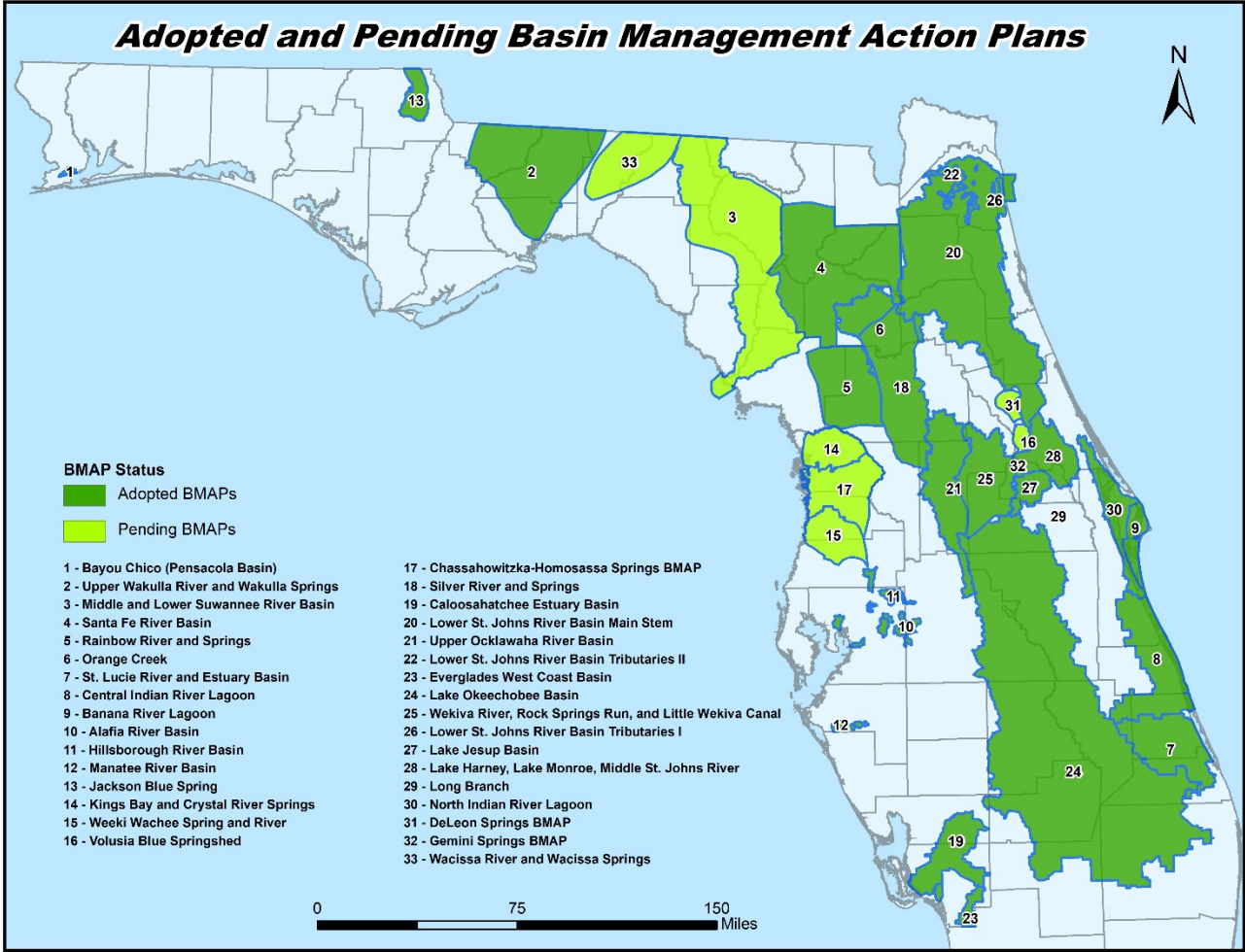
BMP Manual	Response Rate by Enrollments	Composite Score
Citrus	89%	99.6
Conservation Plan/LOPP	70%	98.4
Cow/Calf	74%	99.4
Dairy	40%	96.6
Equine	54%	98.4
Nursery	58%	98.4
Poultry	100%	100
Sod	67%	99.1
Specialty Fruit & Nut	77%	99.4
Vegetables & Agronomic Crops	74%	99.5

Table 2. Status of BMP Implementation Within Adopted and Pending BMAP Boundaries

Basin Management Action Plan Area	Status of Implementation of BMPs Composite Score	Percentage of FSAID4 Ag Acres Enrolled	Enrollments (NOIs)		Represented in Implementation Status Data	
			Number	Total Ag Acres (FSAID4)	Number of NOIs	Ag Acres (FSAID4)
Statewide (includes areas not in BMAPs)	99.5	53	11,023	3,749,331	8,119	3,070,927
Alafia River Basin	100	43	96	3,626	77	2,890
Caloosahatchee Estuary Basin	96.5	22	41	8,230	31	8,173
Central Indian River Lagoon	99.9	46	271	62,415	182	44,229
* Chassahowitzka-Homosassa Springs	100	21	52	8,167	41	5,567
DeLeon Springs	98.0	20	32	2,120	19	1,694
Everglades West Coast Basin	98.4	52	18	4,989	10	4,699
Gemini Springs	#	26	6	209	1	0.4
Hillsborough River	99.6	58	49	8,946	35	8,850
Jackson Blue Spring	100	57	184	15,901	130	9,460
* Kings Bay & Crystal River Springs	99.0	8	14	945	10	938
Lake Harney, Lake Monroe, Middle St. Johns River, Smith Canal	100	28	29	5,664	13	1,786
Lake Jesup	99.5	44	27	2,398	13	879
Lake Okeechobee Basin	99.5	79	2,416	1,356,006	2,090	1,130,945
* Long Branch	Not Reported	40	1	195	0	0
Lower St. Johns River Basin Mainstem	99.4	43	255	57,592	147	32,512
Lower St. Johns River Basin Tributaries I	Not Reported	78	1	51	0	0
Lower St. Johns River Basin Tributaries II	100	45	3	408	3	408
Manatee River Basin	98.6	52	5	659	3	659
Middle & Lower Suwannee River Basin	99.1	48	906	158,152	611	116,040
North Indian River Lagoon	100	7	22	260	11	55
Orange Creek	95.6	29	160	17,404	96	10,188
Rainbow Springs and Rainbow Run	100	41	265	73,104	155	51,262
Santa Fe River Basin	98.4	39	606	80,682	351	44,760
Silver Springs Group & Silver River	99.0	18	264	23,370	158	13,967
St. Lucie River and Estuary Basin	99.5	63	306	135,780	222	119,488
Upper Ocklawaha River Basin	99.6	19	364	15,249	251	11,767
Upper Wakulla River & Wakulla Springs	100	24	78	15,331	54	11,162
* Volusia Blue Springshed	100	4	7	85	3	26
Wacissa Springs	100	30	55	16,806	41	14,522
Weeki Wachee Springs & River	100	31	47	14,064	39	13,645
Wekiva River, Rock Spgs Run, Little Wekiva Canal	98.0	17	321	7,185	159	4,249

*BMAP pending adoption as of June 29, 2018. # Not included to prevent disclosure of confidential information.

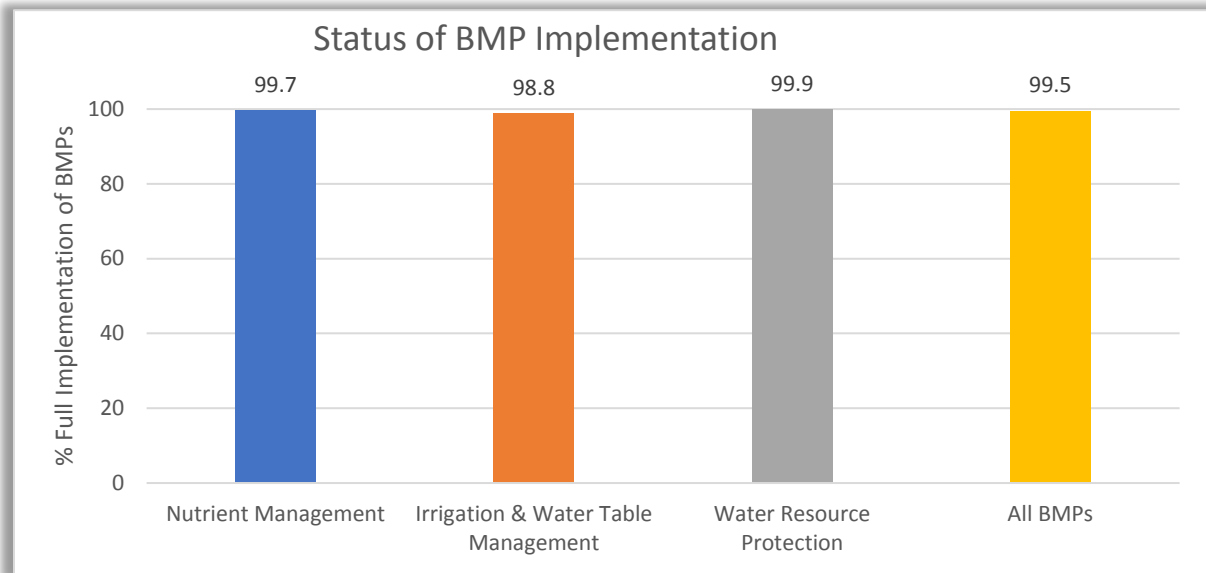
Status of Best Management Practices Implementation for Each Adopted and Pending BMAP



Note: No reports are included for the Bayou Chico or Banana River Lagoon BMAPs as there are no mapped agricultural operations in those areas.

Status of Implementation of Agricultural Best Management Practices (BMPs) Statewide¹

To enroll in the FDACS BMP program, an agricultural producer must sign a Notice of Intent (NOI) to implement BMPs. Enrollment information below is based on data from NOIs.



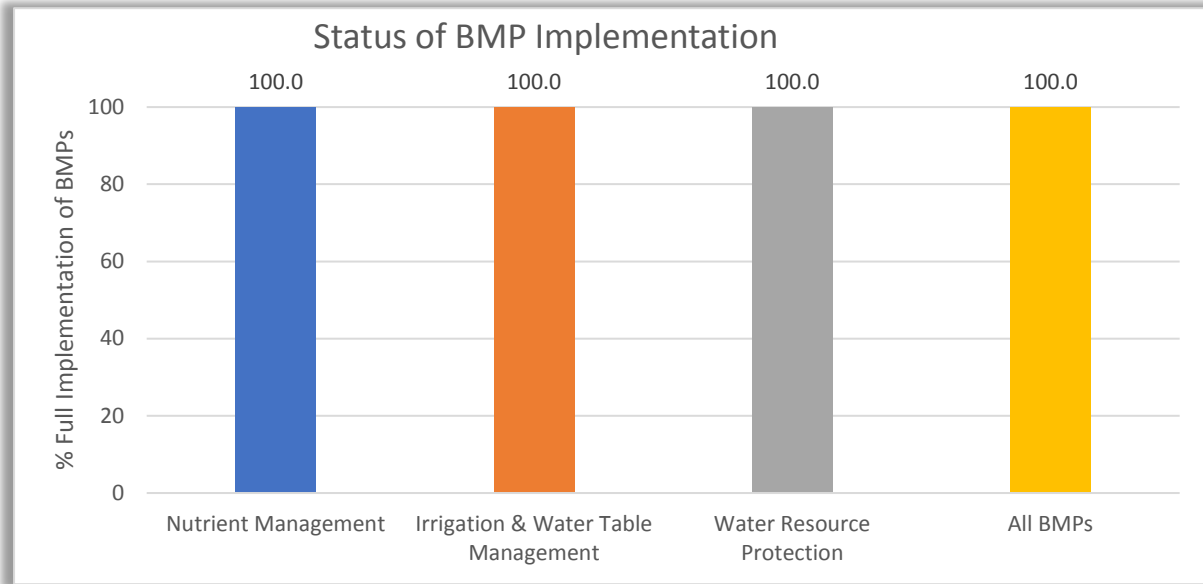
Enrollment and Response Summary - Statewide
Total number of enrollments (NOIs) Statewide: 11,023
Total agricultural acres enrolled Statewide: 3,749,331
Number of enrollments represented in implementation status data Statewide: 8,119
Enrolled ag acres represented in implementation status data Statewide: 3,070,927

Agricultural acres enrolled Statewide as of 12/31/2017	
BMP Manual	Acres
Citrus	445,978
Conservation Plan Rule	221,051
Cow/Calf	1,640,029
Dairy	10,657
Equine	8,829
Fruit & Nut	16,297
Lake O Protection Plan	104,729
Nursery	27,504
Poultry	44
Row/Field Crops	933,683
Sod	24,250
Wildlife	320
TOTAL	3,749,331

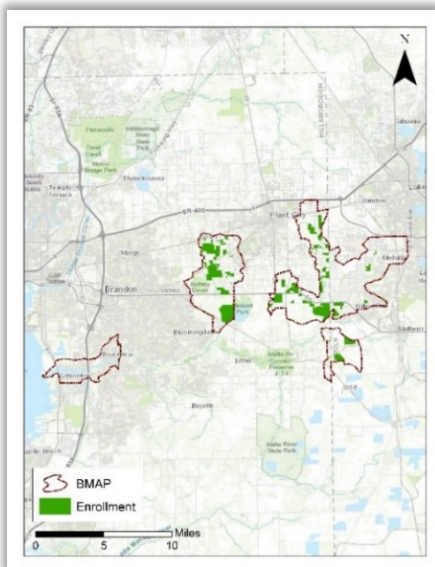
¹Status of BMP implementation data are for each NOI during the period April 1, 2017 to April 30, 2018. Map and BMP manual table information are as of December 31, 2017.

Status of Implementation of Agricultural Best Management Practices (BMPs) in the Alafia River Basin¹

To enroll in the FDACS BMP program, an agricultural producer must sign a Notice of Intent (NOI) to implement BMPs. Enrollment information below is based on data from NOIs.



Enrollment and Response Summary - Alafia River BMAP	
Total number of enrollments (NOIs):	96
Total agricultural acres enrolled:	3,626
Number of enrollments represented in implementation status:	77
Enrolled ag acres represented in implementation status data:	2,890



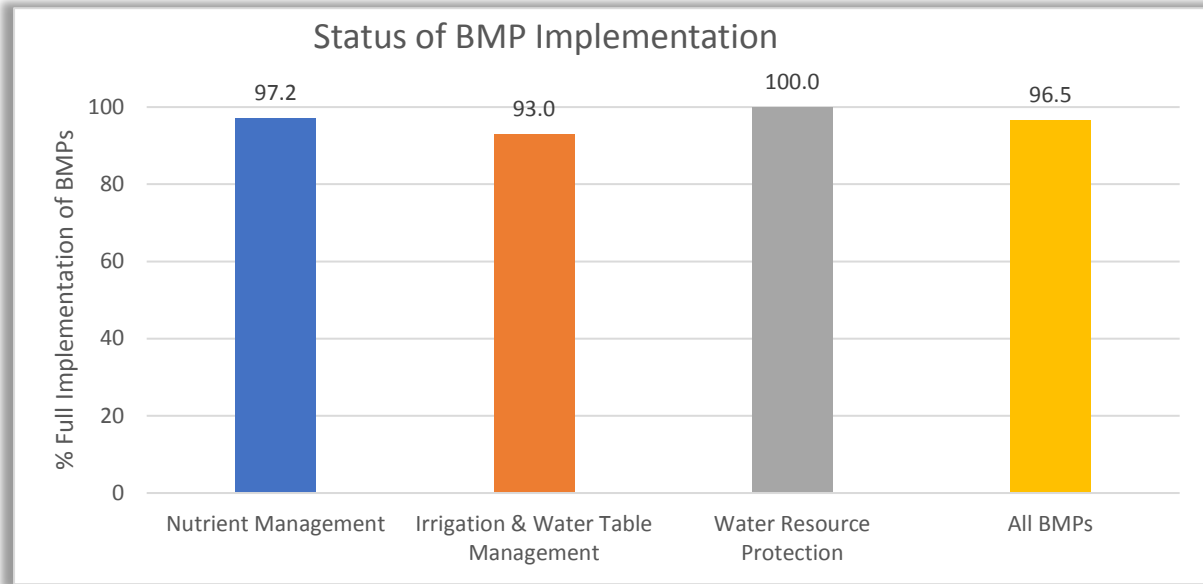
Agricultural acres enrolled in the Alafia River BMAP as of December 31, 2017	
BMP Manual	Acres
Cow/Calf	86
Equine	19
Fruit & Nut	360
Multiple Use	241
Nursery	200
Row/Field Crop	2,720
TOTAL	3,626

Alafia enrolled areas through 12/31/17

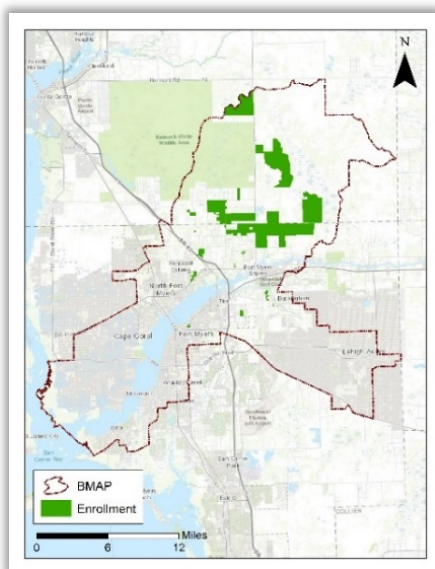
¹Status of BMP implementation data are for each NOI during the period April 1, 2017 to April 30, 2018. Map and BMP manual table information are as of December 31, 2017.

Status of Implementation of Agricultural Best Management Practices (BMPs) in the Caloosahatchee Estuary Basin¹

To enroll in the FDACS BMP program, an agricultural producer must sign a Notice of Intent (NOI) to implement BMPs. Enrollment information below is based on data from NOIs.



Enrollment and Response Summary – Caloosahatchee Estuary BMAP	
Total number of enrollments (NOIs):	41
Total agricultural acres enrolled:	8,230
Number of enrollments represented in implementation status data:	31
Enrolled ag acres represented in implementation status data:	8,173



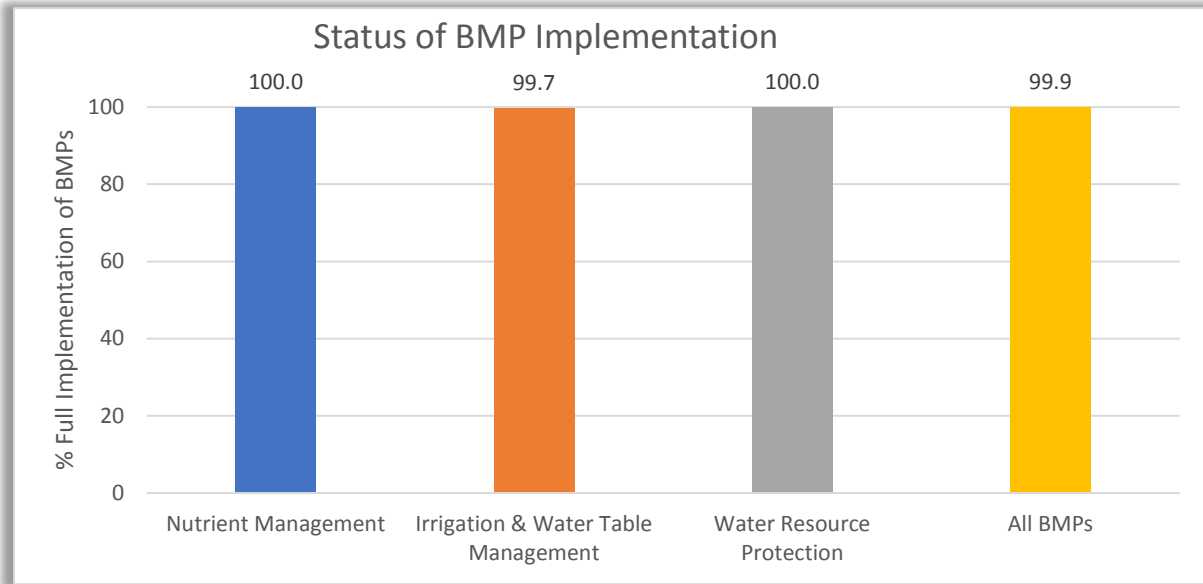
Caloosahatchee enrolled areas through 12/31/17

Agricultural acres enrolled in the Caloosahatchee Estuary as of 12/31/2017	
BMP Manual	Acres
Cow/Calf	7,283
Fruit & Nut	23
Multiple Use	515
Nursery	125
Row/Field Crop	44
Sod	240
TOTAL	8,230

¹Status of BMP implementation data are for each NOI during the period April 1, 2017 to April 30, 2018. Map and BMP manual table information are as of December 31, 2017.

Status of Implementation of Agricultural Best Management Practices (BMPs) in the Central Indian River Lagoon Basin¹

To enroll in the FDACS BMP program, an agricultural producer must sign a Notice of Intent (NOI) to implement BMPs. Enrollment information below is based on data from NOIs.



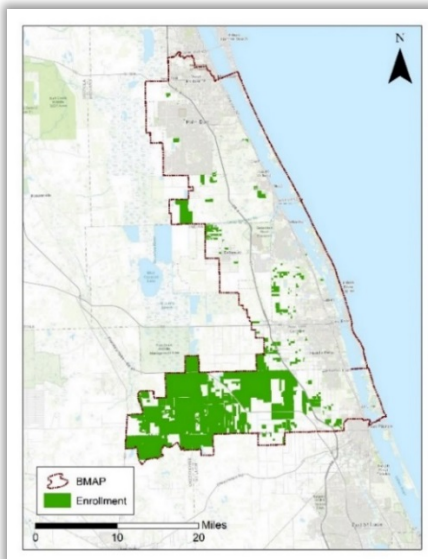
Enrollment and Response Summary – Central Indian River Lagoon BMAP

Total number of enrollments (NOIs): **271**

Total agricultural acres enrolled: **62,415**

Number of enrollments represented in implementation status data: **182**

Enrolled ag acres represented in implementation status data: **44,229**



Central IRL enrolled areas (through 12/31/17)

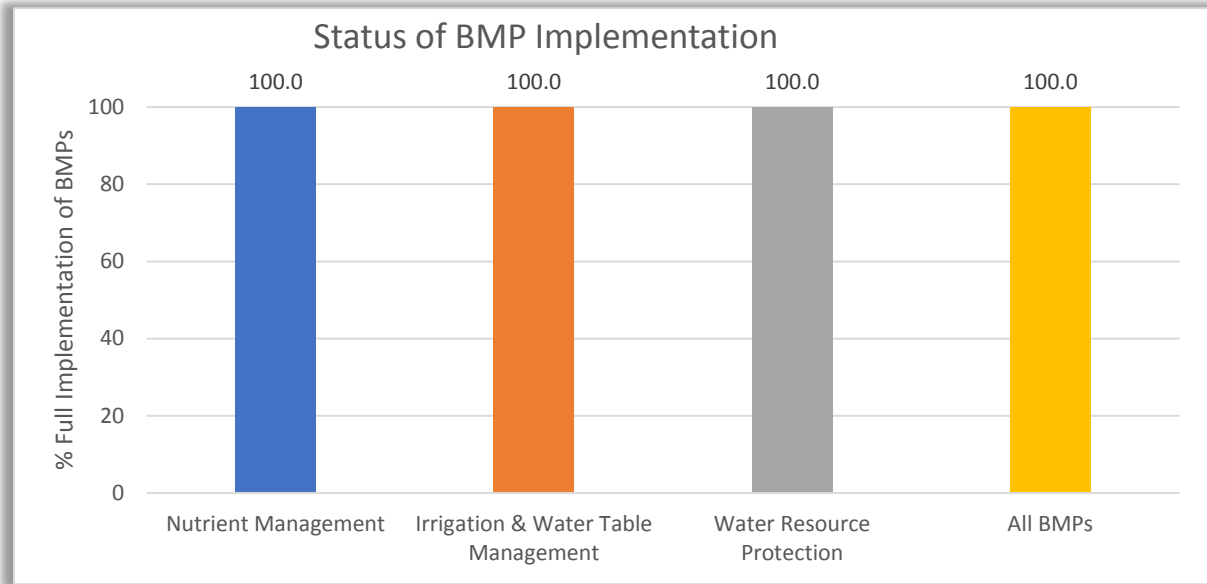
Agricultural acres enrolled in the Central IRL as of December 31, 2017

BMP Manual	Acres
Citrus	31,753
Conservation Plan Rule	4,354
Cow/Calf	17,186
Dairy	1,641
Lake O Protection Plan	3,264
Multiple Use	1,686
Nursery	465
Row/Field Crops	2,066
TOTAL	62,415

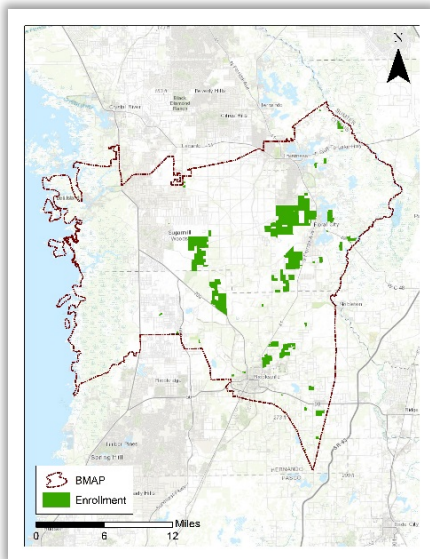
¹Status of BMP implementation data are for each NOI during the period April 1, 2017 to April 30, 2018. Map and BMP manual table information are as of December 31, 2017.

Status of Implementation of Agricultural Best Management Practices (BMPs) in the Chassahowitzka-Homosassa Springs Basin¹

To enroll in the FDACS BMP program, an agricultural producer must sign a Notice of Intent (NOI) to implement BMPs. Enrollment information below is based on data from NOIs.



Enrollment and Response Summary – Chassahowitzka-Homosassa Springs BMAP	
Total number of enrollments (NOIs):	52
Total agricultural acres enrolled:	8,167
Number of enrollments represented in implementation status:	41
Enrolled ag acres represented in implementation status data:	5,567



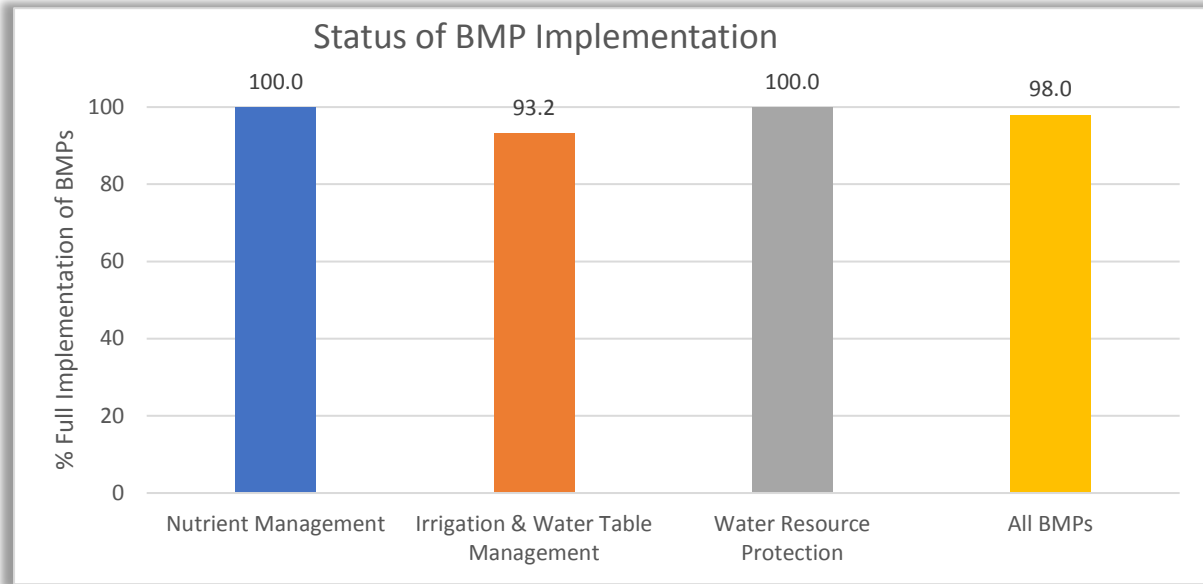
Agricultural acres enrolled in the Chass/Homosassa BMAP area as of 12/31/17	
BMP Manual	Acres
Citrus	1,427
Cow/Calf	5,241
Dairy	304
Equine	20
Fruit & Nut	345
Multiple Use	311
Nursery	498
Row/Field Crop	21
TOTAL	8,167

Chass/Homosassa enrolled areas through 12/31/17

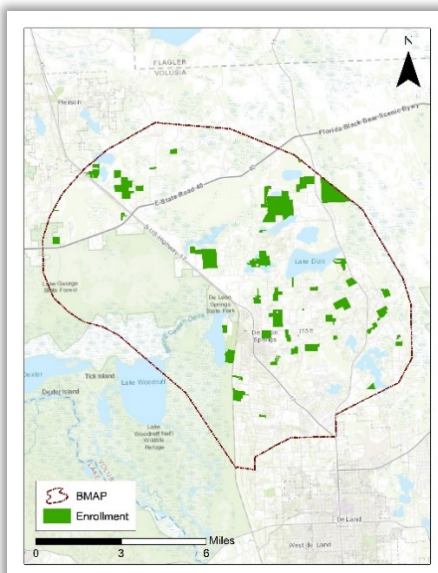
¹Status of BMP implementation data are for each NOI during the period April 1, 2017 to April 30, 2018. Map and BMP manual table information are as of December 31, 2017.

Status of Implementation of Agricultural Best Management Practices (BMPs) in the DeLeon Springs Basin¹

To enroll in the FDACS BMP program, an agricultural producer must sign a Notice of Intent (NOI) to implement BMPs. Enrollment information below is based on data from NOIs.



Enrollment and Response Summary – DeLeon Springs BMAP	
Total number of enrollments (NOIs):	32
Total agricultural acres enrolled:	2,120
Number of enrollments represented in implementation status:	19
Enrolled ag acres represented in implementation status:	1,694



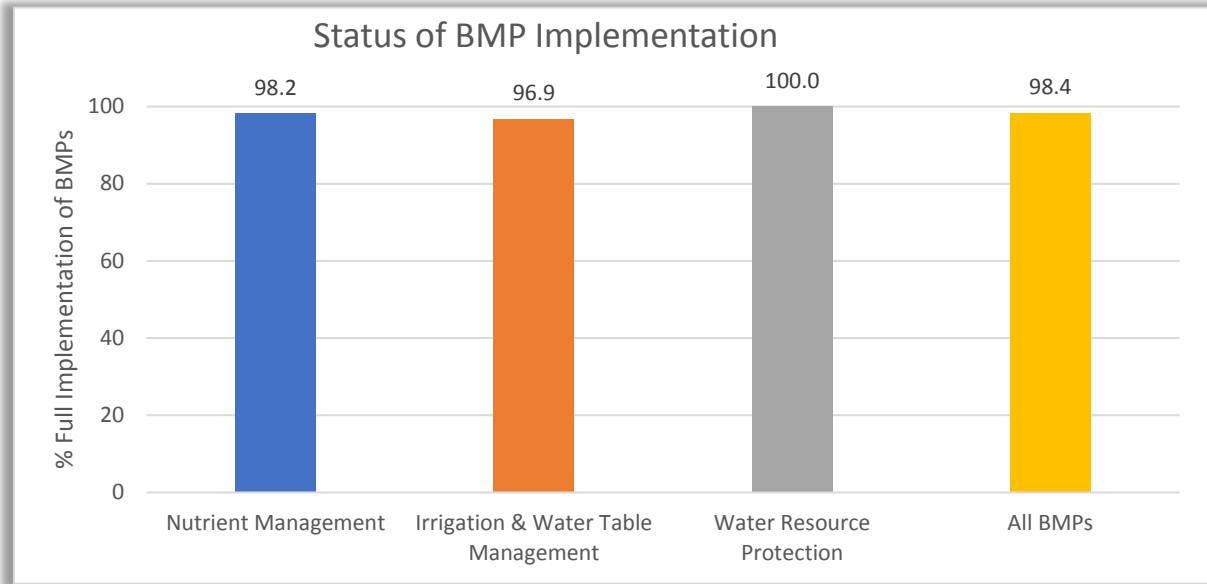
DeLeon Springs enrolled areas through 12

Agricultural acres enrolled in the DeLeon Springs BMAP area as of 12/31/17	
BMP Manual	Acres
Citrus	77
Cow/Calf	888
Equine	166
Nursery	970
Row/Field Crop	19
TOTAL	2,120

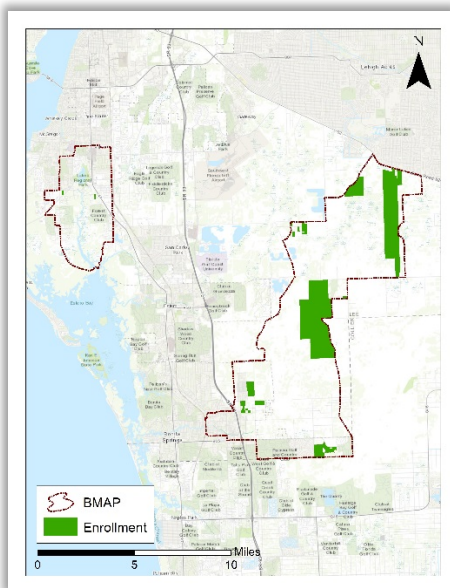
¹Status of BMP implementation data are for each NOI during the period April 1, 2017 to April 30, 2018. Map and BMP manual table information are as of December 31, 2017.

Status of Implementation of Agricultural Best Management Practices (BMPs) in the Everglades West Coast Basin¹

To enroll in the FDACS BMP program, an agricultural producer must sign a Notice of Intent (NOI) to implement BMPs. Enrollment information below is based on data from NOIs.



Enrollment and Response Summary – Everglades West Coast BMAP	
Total number of enrollments (NOIs):	18
Total agricultural acres enrolled:	4,989
Number of enrollments represented in implementation:	10
Enrolled ag acres represented in implementation status:	4,699



Agricultural acres enrolled in the Everglades WC BMAP area as of 12/31/17	
BMP Manual	Acres
Citrus	747
Cow/Calf	8
Multiple Use	65
Nursery	25
Row/Field Crop	4,144
TOTAL	4,989

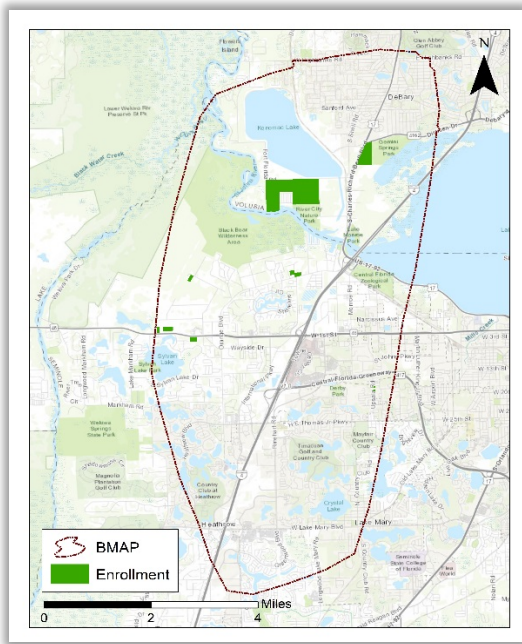
¹Status of BMP implementation data are for each NOI during the period April 1, 2017 to April 30, 2018. Map and BMP manual table information are as of December 31, 2017.

Status of Implementation of Agricultural Best Management Practices (BMPs) in the Gemini Springs Basin¹

To enroll in the FDACS BMP program, an agricultural producer must sign a Notice of Intent (NOI) to implement BMPs. Enrollment information below is based on data from NOIs.

Not included to prevent disclosure of confidential information.

Enrollment and Response Summary -Gemini Springs BMAP	
Total number of enrollments (NOIs):	6
Total agricultural acres enrolled:	209
Number of enrollments represented in implementation status:	1
Enrolled ag acres represented in implementation status:	0.4



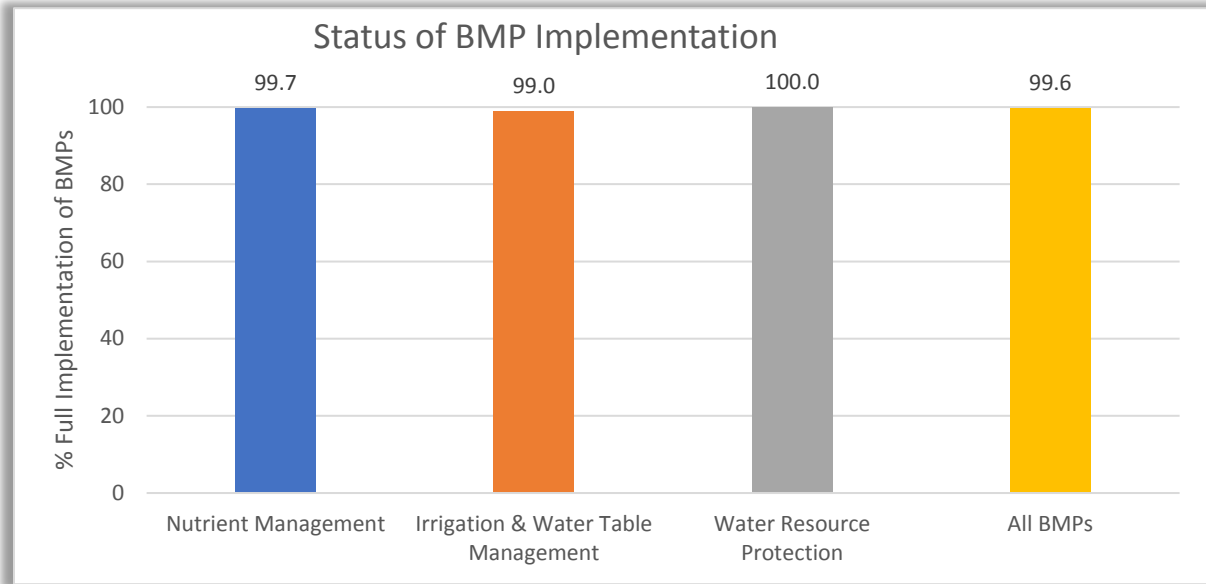
Gemini Springs enrolled areas through 12/31/17

Agricultural acres enrolled in the Gemini Springs BMAP area as of 12/31/2017	
BMP Manual	Acres
Cow/Calf	185
Nursery	24
TOTAL	209

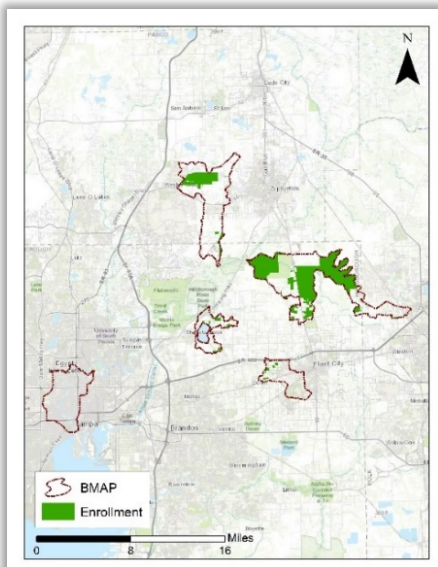
¹Status of BMP implementation data are for each NOI during the period April 1, 2017 to April 30, 2018. Map and BMP manual table information are as of December 31, 2017.

Status of Implementation of Agricultural Best Management Practices (BMPs) in the Hillsborough River Basin¹

To enroll in the FDACS BMP program, an agricultural producer must sign a Notice of Intent (NOI) to implement BMPs. Enrollment information below is based on data from NOIs.



Enrollment and Response Summary – Hillsborough River BMAP	
Total number of enrollments (NOIs):	49
Total agricultural acres enrolled:	8,946
Number of enrollments represented in implementation status:	35
Enrolled ag acres represented in implementation status:	8,850



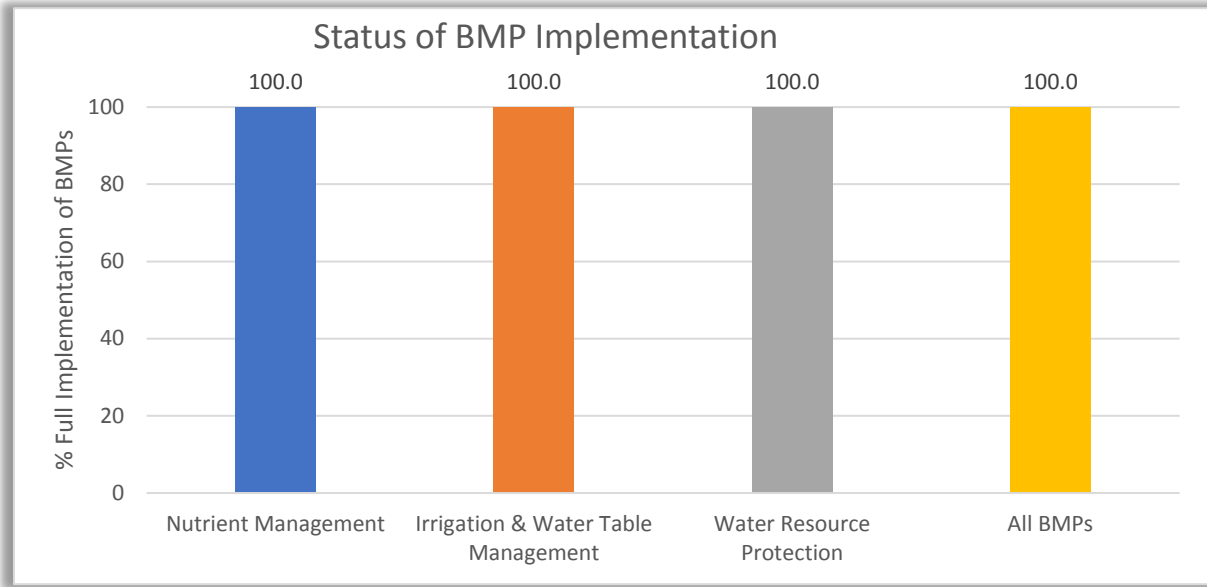
Hillsborough enrolled areas through 12/31/17

Agricultural acres enrolled in the Hillsborough River BMAP area as of 12/31/17	
BMP Manual	Acres
Citrus	1
Cow/Calf	8,065
Equine	7
Fruit & Nut	7
Multiple Use	203
Nursery	47
Row/Field Crops	616
TOTAL	8,946

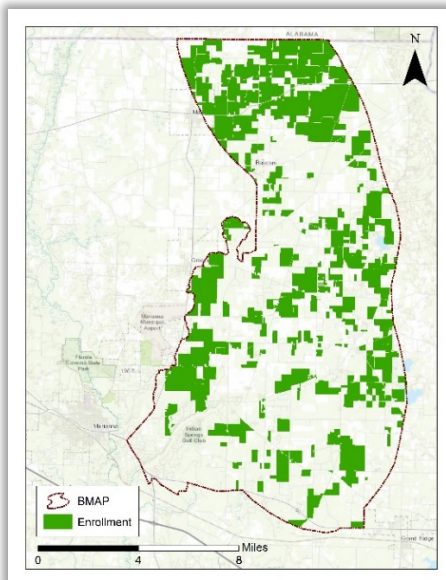
¹Status of BMP implementation data are for each NOI during the period April 1, 2017 to April 30, 2018. Map and BMP manual table information are as of December 31, 2017.

Status of Implementation of Agricultural Best Management Practices (BMPs) in the Jackson Blue Springs Basin¹

To enroll in the FDACS BMP program, an agricultural producer must sign a Notice of Intent (NOI) to implement BMPs. Enrollment information below is based on data from NOIs.



Enrollment and Response Summary – Jackson Blue Springs BMAP
Total number of enrollments (NOIs): 184
Total agricultural acres enrolled: 15,901
Number of enrollments represented in implementation status data: 130
Enrolled ag acres represented in implementation status data: 9,460



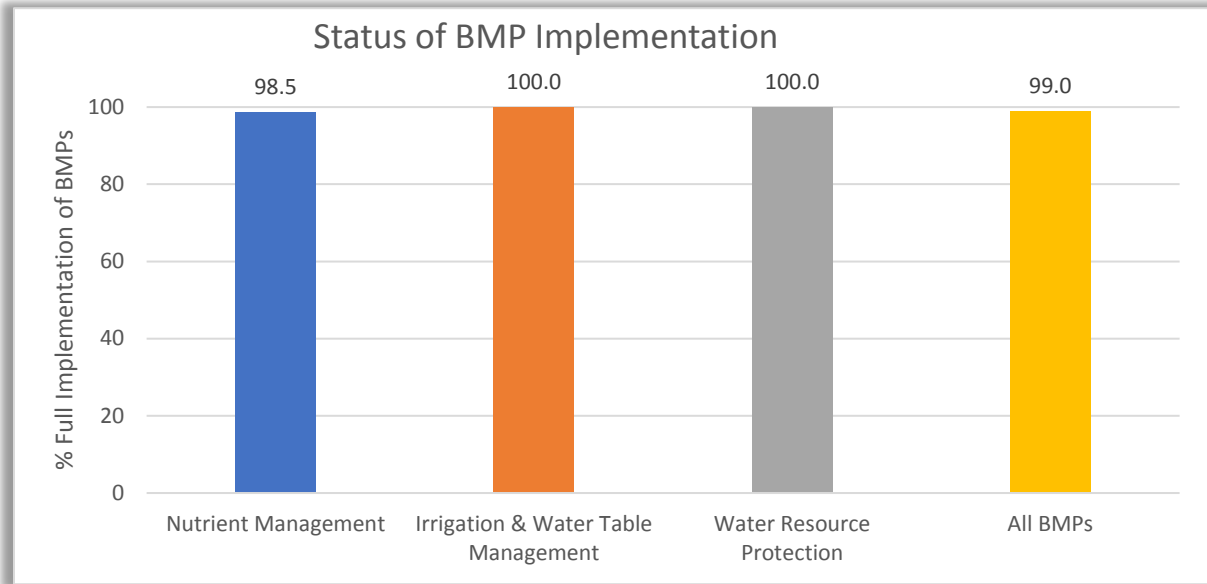
Agricultural acres enrolled in the Jackson Blue Springs BMAP area as of 12/31/17	
BMP Manual	Acres
Cow/Calf	1,503
Multiple Use	1,571
Row/Field Crop	12,827
TOTAL	15,901

Jackson Blue Spring enrolled areas through 12/31/17

¹Status of BMP implementation data are for each NOI during the period April 1, 2017 to April 30, 2018. Map and BMP manual table information are as of December 31, 2017.

Status of Implementation of Agricultural Best Management Practices (BMPs) in the Kings Bay & Crystal River Springs Basin¹

To enroll in the FDACS BMP program, an agricultural producer must sign a Notice of Intent (NOI) to implement BMPs. Enrollment information below is based on data from NOIs.



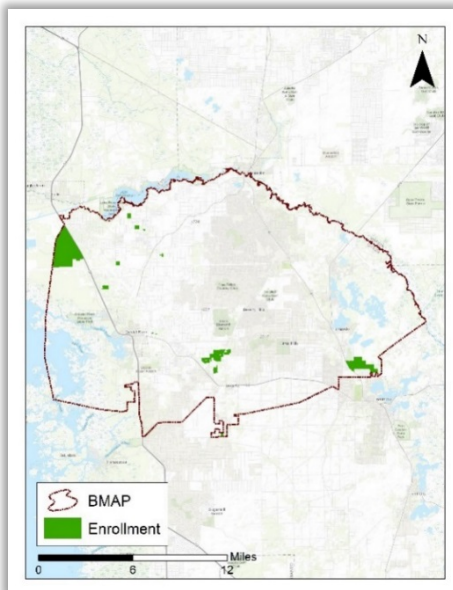
Enrollment and Response Summary – Kings Bay & Crystal River Springs BMAP

Total number of enrollments (NOIs): **14**

Total agricultural acres enrolled: **945**

Number of enrollments represented in implementation status: **10**

Enrolled ag acres represented in implementation status data: **938**



Agricultural acres enrolled in the Kings Bay & Crystal River Spgs BMAP area as of 12/31/17

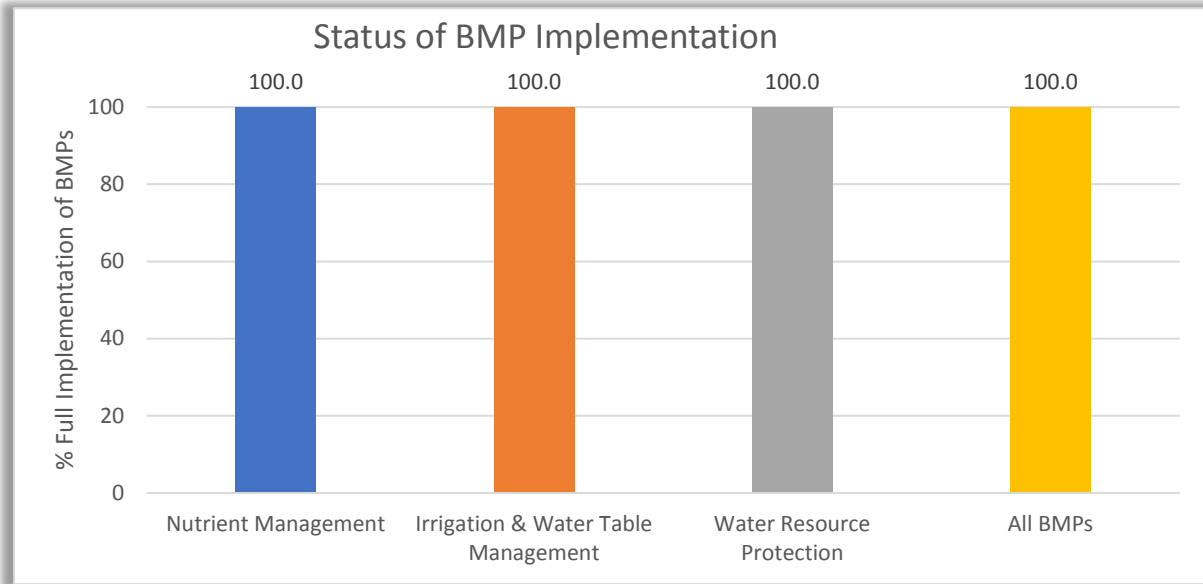
BMP Manual	Acres
Cow/Calf	938
Nursery	7
TOTAL	945

Kings Bay/Crystal River enrolled areas through 12/31/17

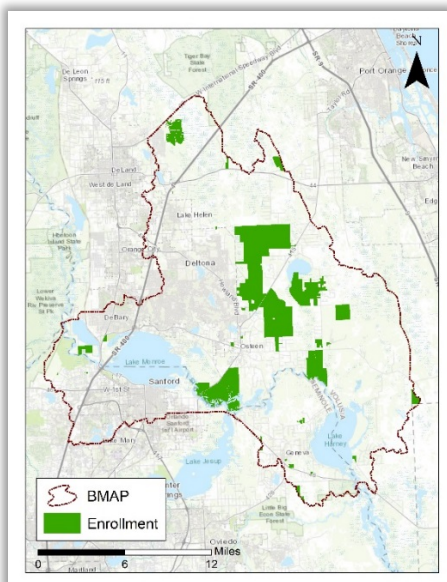
¹Status of BMP implementation data are for each NOI during the period April 1, 2017 to April 30, 2018. Map and BMP manual table information are as of December 31, 2017.

Status of Implementation of Agricultural Best Management Practices (BMPs) in Lake Harney, Lake Monroe, Middle St. Johns River, and Smith Canal Basin¹

To enroll in the FDACS BMP program, an agricultural producer must sign a Notice of Intent (NOI) to implement BMPs. Enrollment information below is based on data from NOIs.



Enrollment and Response Summary – Lakes Harney & Monroe, MSJR, Smith Canal BMAP	
Total number of enrollments (NOIs):	29
Total agricultural acres enrolled:	5,664
Number of enrollments represented in implementation status data:	13
Enrolled ag acres represented in implementation status data:	1,786



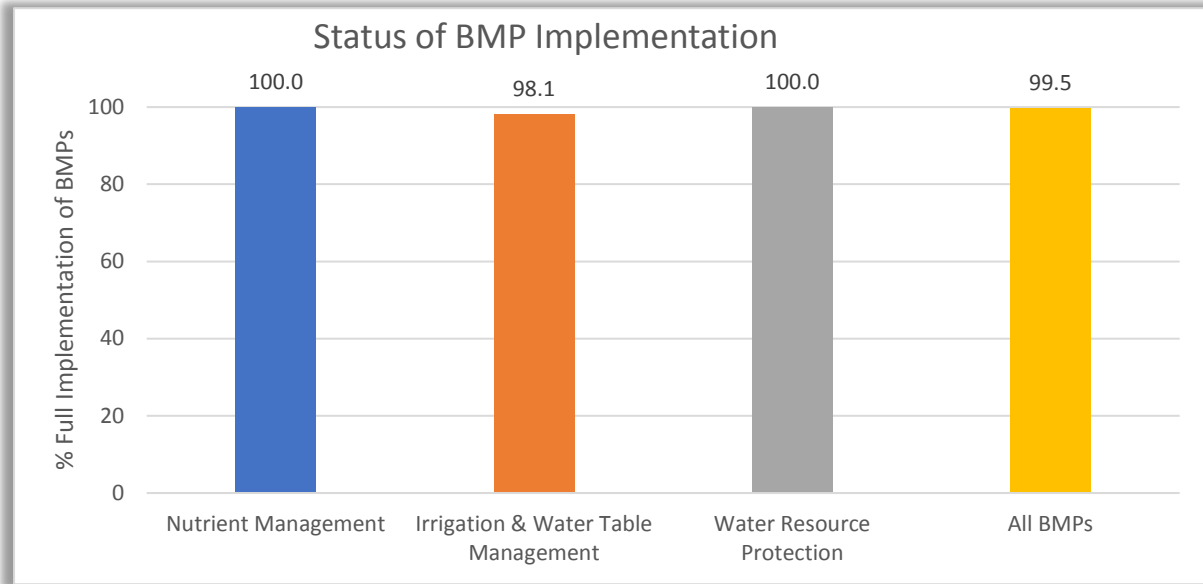
Agricultural acres enrolled in the LH, LM, MSJR, SC BMAP area as of 12/31/17	
BMP Manual	Acres
Citrus	112
Cow/Calf	5,272
Equine	7
Nursery	266
Row/Field Crops	7
TOTAL	5,664

LH, LM, MSJR, SC enrolled areas through 12/31/17

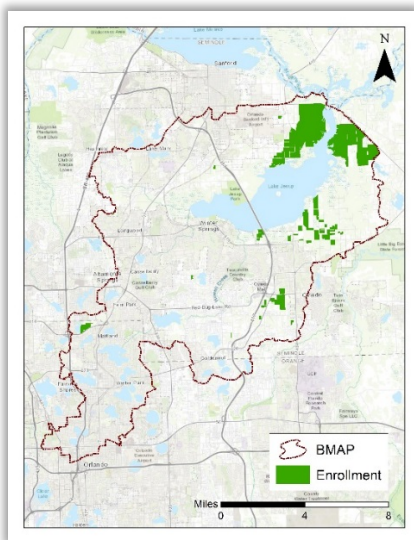
¹Status of BMP implementation data are for each NOI during the period April 1, 2017 to April 30, 2018. Map and BMP manual table information are as of December 31, 2017.

Status of Implementation of Agricultural Best Management Practices (BMPs) in the Lake Jesup Basin¹

To enroll in the FDACS BMP program, an agricultural producer must sign a Notice of Intent (NOI) to implement BMPs. Enrollment information below is based on data from NOIs.



Enrollment and Response Summary – Lake Jesup	
Total number of enrollments (NOIs):	27
Total agricultural acres enrolled:	2,398
Number of enrollments represented in implementation status data:	13
Enrolled ag acres represented in implementation status data:	879



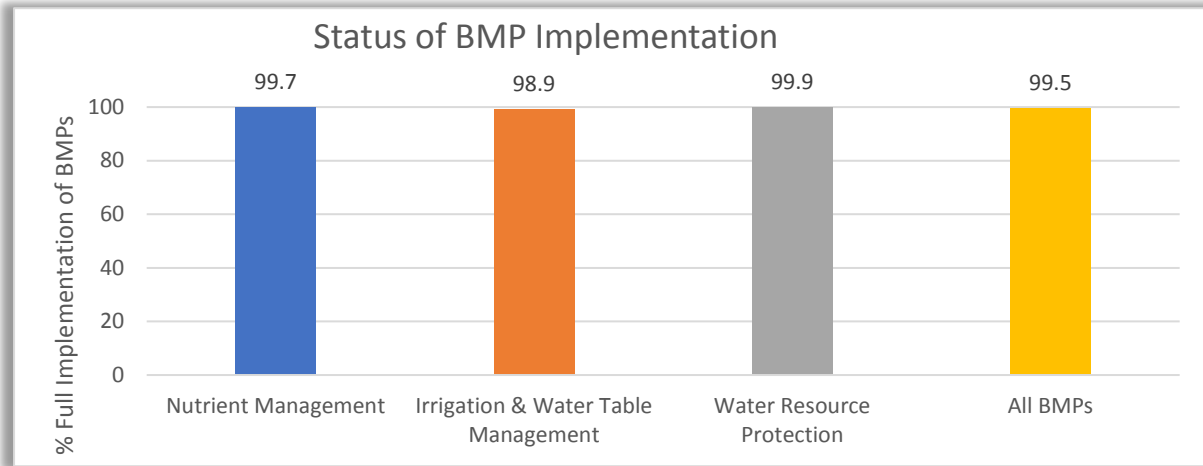
Lake Jesup BMAP enrolled areas through 12/31/17

Agricultural acres enrolled in the Lake Jesup BMAP area as of 12/31/2017	
BMP Manual	Acres
Citrus	199
Cow/Calf	1,496
Equine	12
Multiple Use	8
Nursery	476
Sod	207
TOTAL	2,398

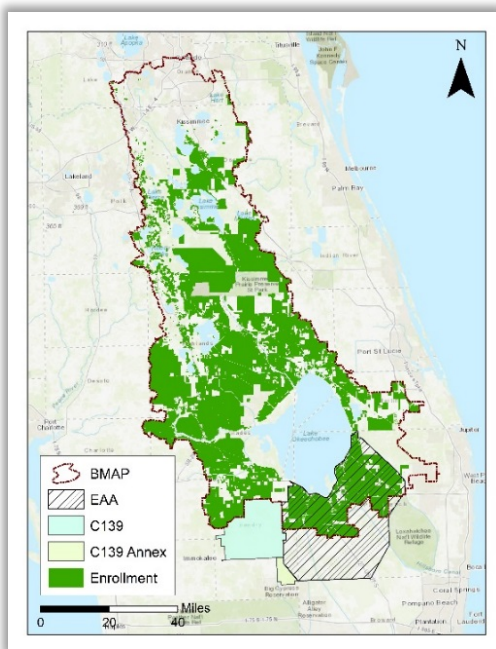
¹Status of BMP implementation data are for each NOI during the period April 1, 2017 to April 30, 2018. Map and BMP manual table information are as of December 31, 2017.

Status of Implementation of Agricultural Best Management Practices (BMPs) in the Lake Okeechobee Basin¹

To enroll in the FDACS BMP program, an agricultural producer must sign a Notice of Intent (NOI) to implement BMPs. Enrollment information below is based on data from NOIs.



Enrollment and Response Summary – Lake Okeechobee BMAP	
Total number of enrollments (NOIs):	2,416
Total agricultural acres enrolled:	1,356,006
Number of enrollments represented in implementation status data:	2,090
Enrolled ag acres represented in implementation status data:	1,130,945



Lake Okeechobee enrolled areas through 12/31/17

Agricultural acres enrolled in the Lake Okeechobee BMAP area as of 12/31/2017	
BMP Manual	Acres
Citrus	118,694
Conservation Plan Rule	166,428
Cow/Calf	527,119
Dairy	3,034
Equine	552
Fruit & Nut	666
Lake O Protection Plan	95,540
Multiple Use	73,222
Nursery	3,938
Row/Field Crop	353,584
Sod	13,229
TOTAL	1,356,006

Status of Implementation of BMPs values do not include NOIs operating under South Florida Water Management District (SFWMD) permits within the EAA/C139 basins. For those NOIs, SFWMD reports that none of the permittees have been determined to be out of compliance with their permits. (Personal communication, April 27, 2018).

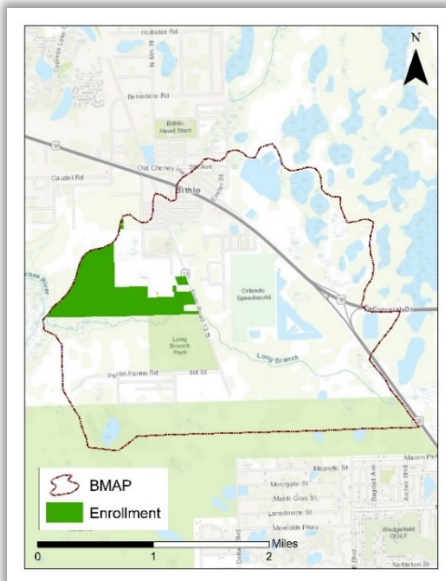
¹Status of BMP implementation data are for each NOI during the period April 1, 2017 to April 30, 2018. Map and BMP manual table information are as of December 31, 2017.

Status of Implementation of Agricultural Best Management Practices (BMPs) in the Long Branch Basin¹

To enroll in the FDACS BMP program, an agricultural producer must sign a Notice of Intent (NOI) to implement BMPs. Enrollment information below is based on data from NOIs.

No Scores Reported

Enrollment and Response Summary – Long Branch BMAP	
Total number of enrollments (NOIs):	1
Total agricultural acres enrolled:	195
Number of enrollments represented in implementation status:	0
Enrolled ag acres represented in implementation status data:	0



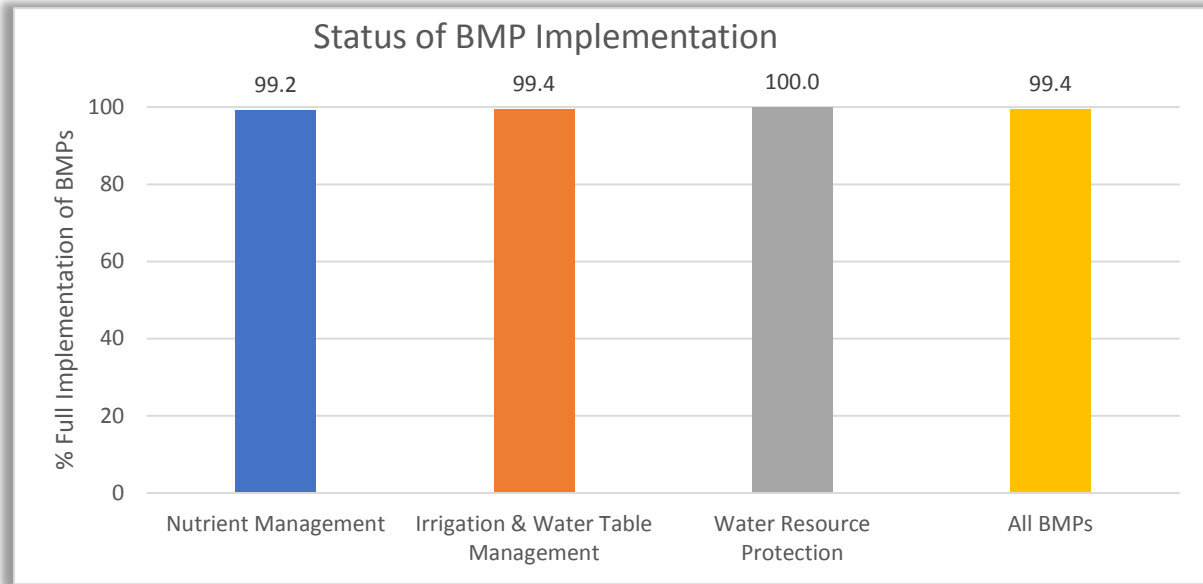
Long Branch enrolled areas through 12/31/17

Agricultural acres enrolled in the Long Branch BMAP area as of 12/31/2017	
BMP Manual	Acres
Cow/Calf	195
TOTAL	195

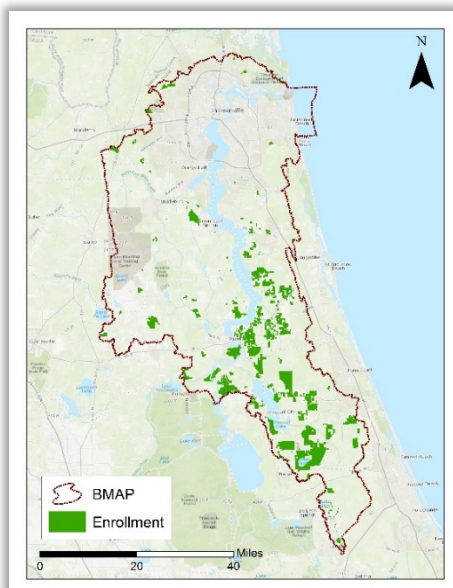
¹Status of BMP implementation data are for each NOI during the period April 1, 2017 to April 30, 2018. Map and BMP manual table information are as of December 31, 2017.

Status of Implementation of Agricultural Best Management Practices (BMPs) in the Lower St. Johns River Basin – Main Stem¹

To enroll in the FDACS BMP program, an agricultural producer must sign a Notice of Intent (NOI) to implement BMPs. Enrollment information below is based on data from NOIs.



Enrollment and Response Summary – Lower St. Johns River Main Stem BMAP	
Total number of enrollments (NOIs):	255
Total agricultural acres enrolled:	57,592
Number of enrollments represented in implementation status data:	147
Enrolled ag acres represented in implementation status data:	32,512



LSJR Main enrolled areas through 12/31/17

Agricultural acres enrolled in the LSJR Main Stem BMAP area as of 12/31/2017	
BMP Manual	Acres
Citrus	57
Cow/Calf	24,531
Equine	77
Fruit & Nut	288
Multiple use	2,915
Nursery	2,506
Row/Field Crops	24,808
Sod	2,410
TOTAL	57,592

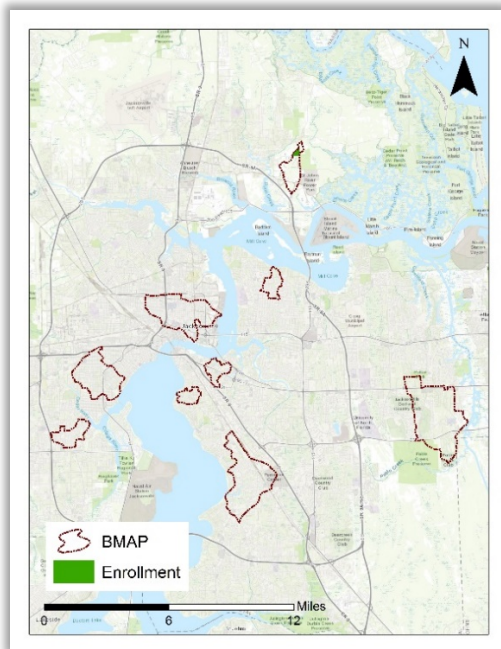
¹Status of BMP implementation data are for each NOI during the period April 1, 2017 to April 30, 2018. Map and BMP manual table information are as of December 31, 2017.

Status of Implementation of Agricultural Best Management Practices (BMPs) in the Lower St. Johns River Basin – Tributaries I¹

To enroll in the FDACS BMP program, an agricultural producer must sign a Notice of Intent (NOI) to implement BMPs. Enrollment information below is based on data from NOIs.

No Scores Reported

Enrollment and Response Summary – Lower St. Johns River Tributaries I
Total number of enrollments (NOIs): 1
Total agricultural acres enrolled: 51
Number of enrollments represented in implementation status data: 0
Enrolled ag acres represented in implementation status data: 0



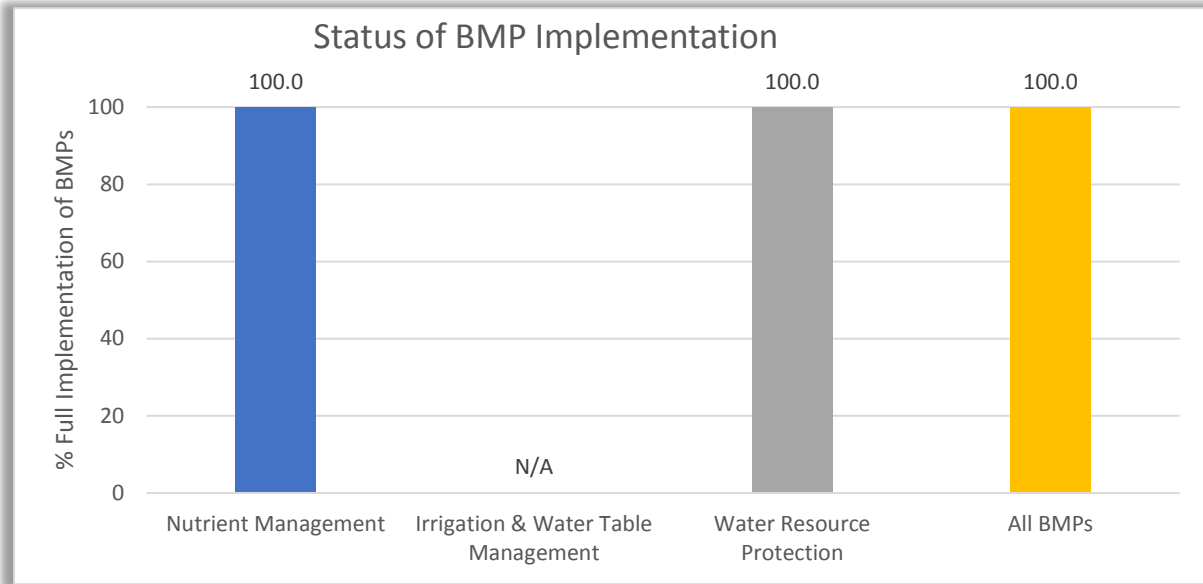
LSJR Tributaries I enrolled areas through 12/31/17

Agricultural acres enrolled in the LSJR Tributaries I BMAP area as of 12/31/2017	
BMP Manual	Acres
Cow/Calf	51
TOTAL	51

¹Status of BMP implementation data are for each NOI during the period April 1, 2017 to April 30, 2018. Map and BMP manual table information are as of December 31, 2017.

Status of Implementation of Agricultural Best Management Practices (BMPs) in the Lower St. Johns River Basin – Tributaries II¹

To enroll in the FDACS BMP program, an agricultural producer must sign a Notice of Intent (NOI) to implement BMPs. Enrollment information below is based on data from NOIs.



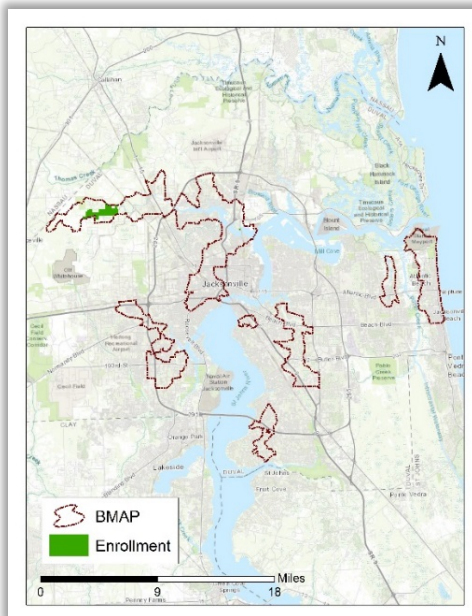
Enrollment and Response Summary – Lower St. Johns River Tributaries II BMAP

Total number of enrollments (NOIs): **3**

Total agricultural acres enrolled: **408**

Number of enrollments represented in implementation status data **3**

Enrolled ag acres represented in implementation status data: **408**



Agricultural acres enrolled in the LSJR Tributaries II BMAP area as of 12/31/2017

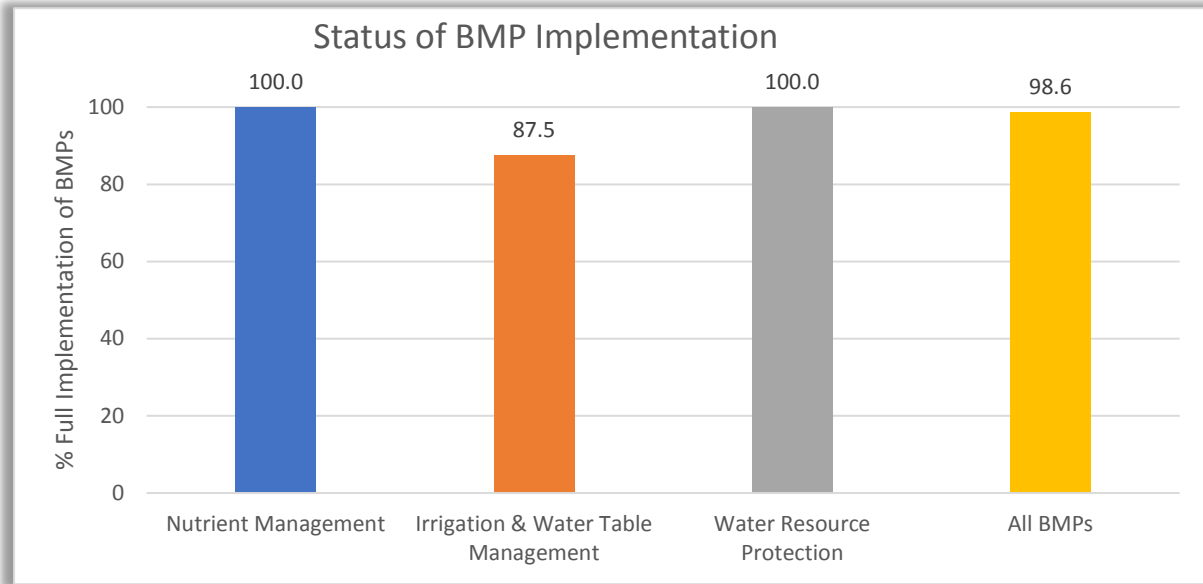
BMP Manual	Acres
Cow/Calf	112
Multiple Use	273
Row/Field Crops	23
TOTAL	408

LSJR Tributaries II enrolled areas through 12/31/17

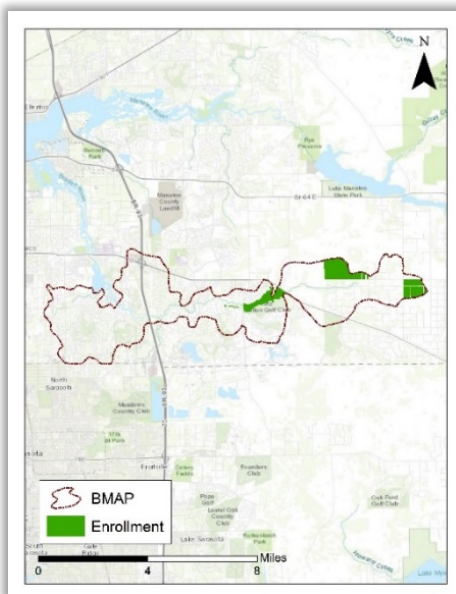
¹Status of BMP implementation data are for each NOI during the period April 1, 2017 to April 30, 2018. Map and BMP manual table information are as of December 31, 2017.

Status of Implementation of Agricultural Best Management Practices (BMPs) in the Manatee River Basin¹

To enroll in the FDACS BMP program, an agricultural producer must sign a Notice of Intent (NOI) to implement BMPs. Enrollment information below is based on data from NOIs.



Enrollment and Response Summary – Manatee River BMAP	
Total number of enrollments (NOIs):	5
Total agricultural acres enrolled:	659
Number of enrollments represented in implementation status data:	3
Enrolled ag acres represented in implementation status data:	659



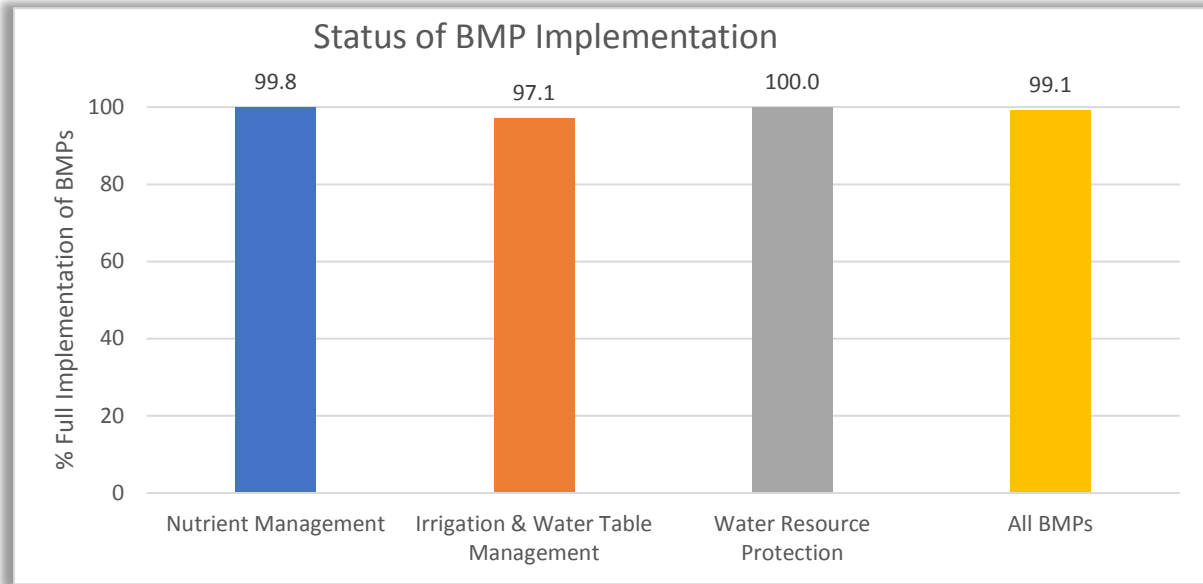
Manatee enrolled areas through 12/31/17

Agricultural acres enrolled in the Manatee River BMAP area as of 12/31/2017	
BMP Manual	Acres
Cow/Calf	300
Multiple Use	344
Row/Field Crop	15
TOTAL	659

¹Status of BMP implementation data are for each NOI during the period April 1, 2017 to April 30, 2018. Map and BMP manual table information are as of December 31, 2017.

Status of Implementation of Agricultural Best Management Practices (BMPs) in the Middle and Lower Suwannee River Basin¹

To enroll in the FDACS BMP program, an agricultural producer must sign a Notice of Intent (NOI) to implement BMPs. Enrollment information below is based on data from NOIs.



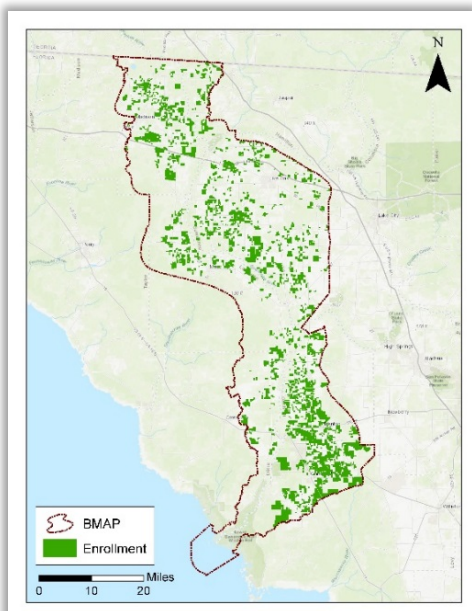
Enrollment and Response Summary – Middle and Lower Suwannee River BMAP

Total number of enrollments (NOIs): **906**

Total agricultural acres enrolled: **158,152**

Number of enrollments represented in implementation status data: **611**

Enrolled ag acres represented in implementation status data: **116,040**



Suwannee enrolled areas through 12/31/17

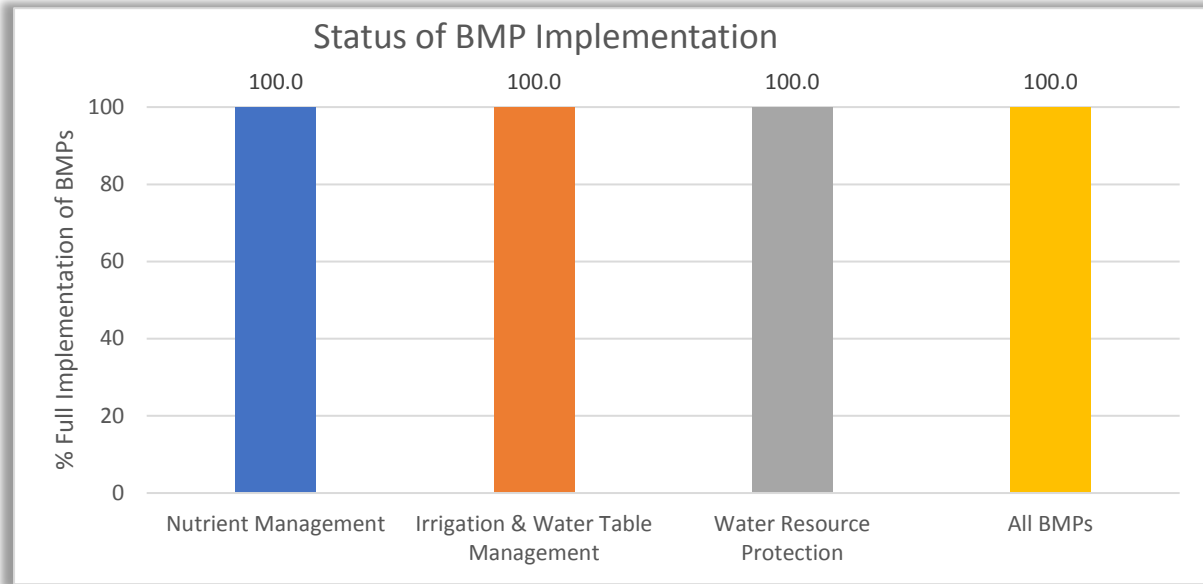
Agricultural acres enrolled in the Suwannee BMAP area as of 12/31/2017

BMP Manual	Acres
Citrus	11
Cow/Calf	25,683
Dairy	4,642
Equine	36
Fruit & Nut	264
Multiple Use	29,574
Poultry	44
Row/Field Crops	97,815
Sod	83
TOTAL	158,152

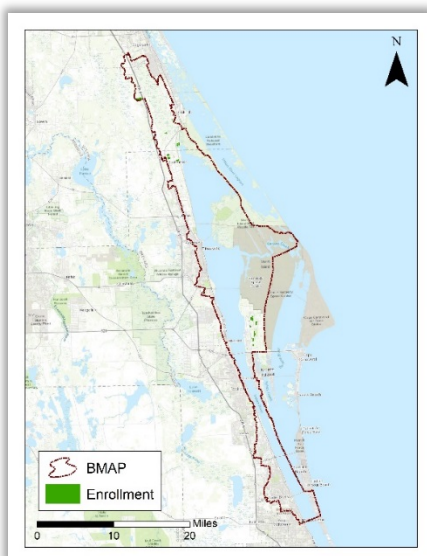
¹Status of BMP implementation data are for each NOI during the period April 1, 2017 to April 30, 2018. Map and BMP manual table information are as of December 31, 2017.

Status of Implementation of Agricultural Best Management Practices (BMPs) in the North Indian River Lagoon Basin¹

To enroll in the FDACS BMP program, an agricultural producer must sign a Notice of Intent (NOI) to implement BMPs. Enrollment information below is based on data from NOIs.



Enrollment and Response Summary – North Indian River Lagoon BMAP
Total number of enrollments (NOIs): 22
Total agricultural acres enrolled: 260
Number of enrollments represented in implementation status data: 11
Enrolled ag acres represented in implementation status data: 55

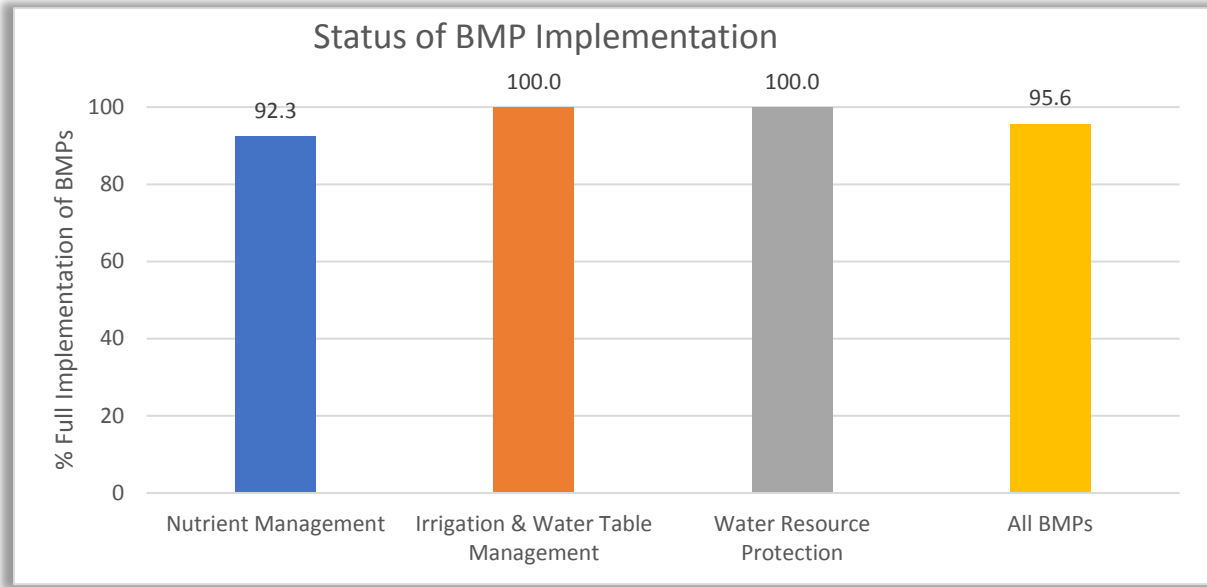


Agricultural acres enrolled in the North IRL BMAP area as of 12/31/2017	
BMP Manual	Acres
Citrus	220
Cow/Calf	39
Nursery	1
TOTAL	260

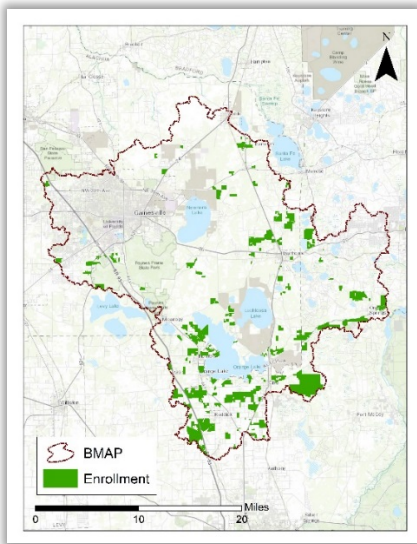
¹Status of BMP implementation data are for each NOI during the period April 1, 2017 to April 30, 2018. Map and BMP manual table information are as of December 31, 2017.

Status of Implementation of Agricultural Best Management Practices (BMPs) in the Orange Creek Basin¹

To enroll in the FDACS BMP program, an agricultural producer must sign a Notice of Intent (NOI) to implement BMPs. Enrollment information below is based on data from NOIs.



Enrollment and Response Summary – Orange Creek BMAP	
Total number of enrollments (NOIs):	160
Total agricultural acres enrolled:	17,404
Number of enrollments represented in implementation status data:	96
Enrolled ag acres represented in implementation status data:	10,188



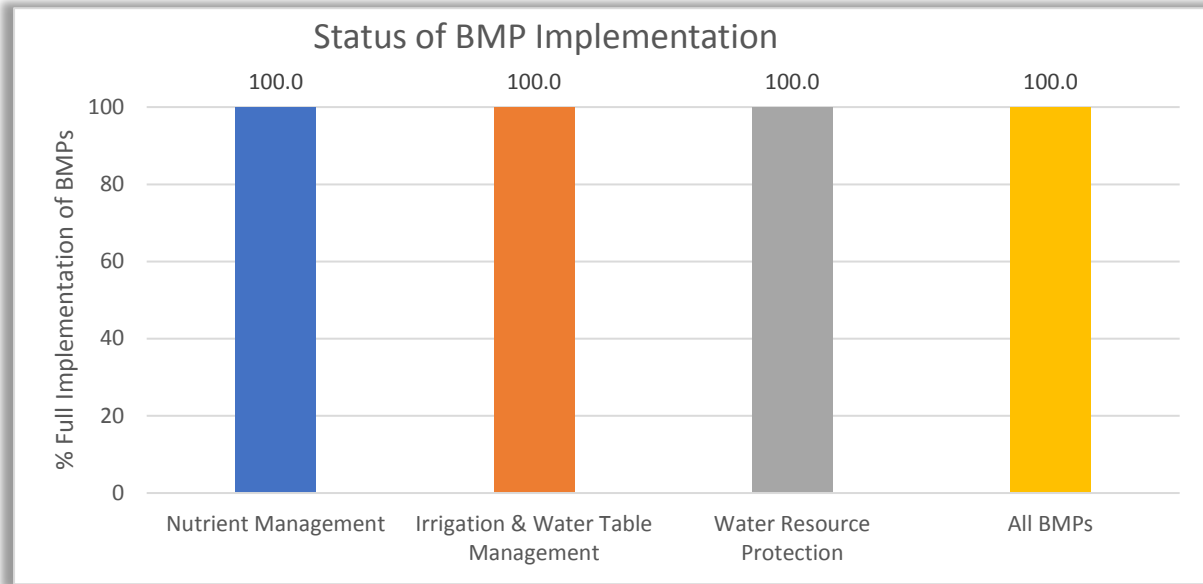
Orange Creek enrolled areas through 12/31/17

Agricultural acres enrolled in the Orange Creek BMAP area as of 12/31/2017	
BMP Manual	Acres
Cow/Calf	9,463
Dairy	77
Equine	2,677
Fruit & Nut	1,364
Multiple Use	1,366
Nursery	36
Row/Field Crops	2,421
TOTAL	17,404

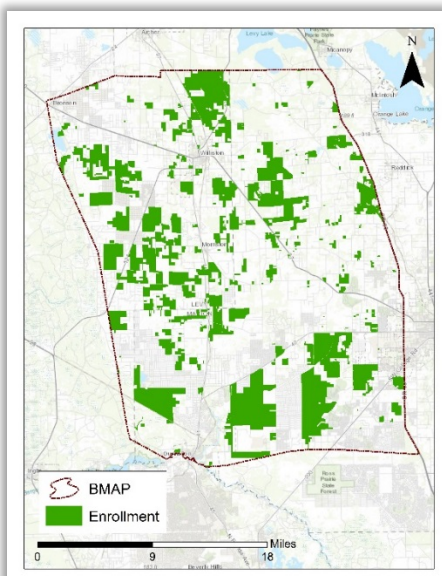
¹Status of BMP implementation data are for each NOI during the period April 1, 2017 to April 30, 2018. Map and BMP manual table information are as of December 31, 2017.

Status of Implementation of Agricultural Best Management Practices (BMPs) in the Rainbow River and Springs Basin¹

To enroll in the FDACS BMP program, an agricultural producer must sign a Notice of Intent (NOI) to implement BMPs. Enrollment information below is based on data from NOIs.



Enrollment and Response Summary – Rainbow River and Springs BMAP	
Total number of enrollments (NOIs):	265
Total agricultural acres enrolled:	73,104
Number of enrollments represented in implementation status:	155
Enrolled ag acres represented in implementation status data:	51,262



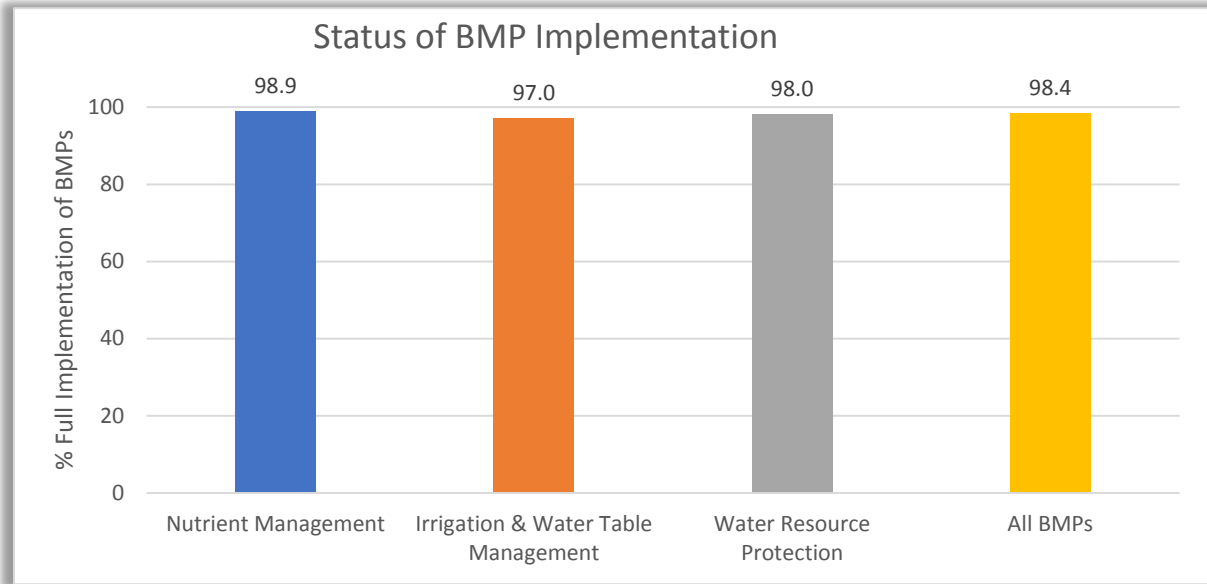
Rainbow BMAP enrolled areas through 12/31/17

Agricultural acres enrolled in the Rainbow River & Spgs BMAP area as of 12/31/2017	
BMP Manual	Acres
Cow/Calf	26,647
Equine	3,774
Fruit & Nut	199
Multiple Use	23,317
Nursery	7
Row/Field Crops	18,934
Sod	226
TOTAL	73,104

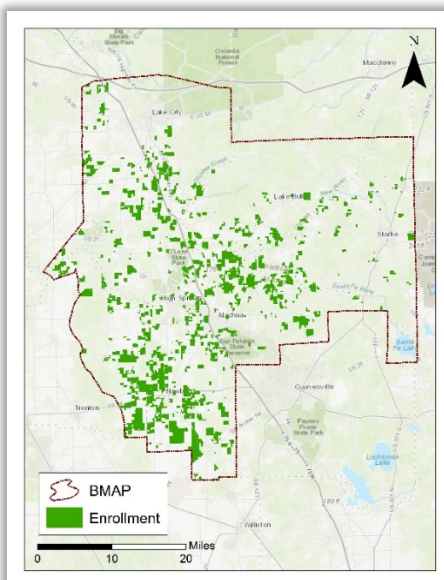
¹Status of BMP implementation data are for each NOI during the period April 1, 2017 to April 30, 2018. Map and BMP manual table information are as of December 31, 2017.

Status of Implementation of Agricultural Best Management Practices (BMPs) in the Santa Fe River Basin¹

To enroll in the FDACS BMP program, an agricultural producer must sign a Notice of Intent (NOI) to implement BMPs. Enrollment information below is based on data from NOIs.



Enrollment and Response Summary – Santa Fe River BMAP	
Total number of enrollments (NOIs):	606
Total agricultural acres enrolled:	80,682
Number of enrollments represented in implementation status:	351
Enrolled ag acres represented in implementation status data:	44,760



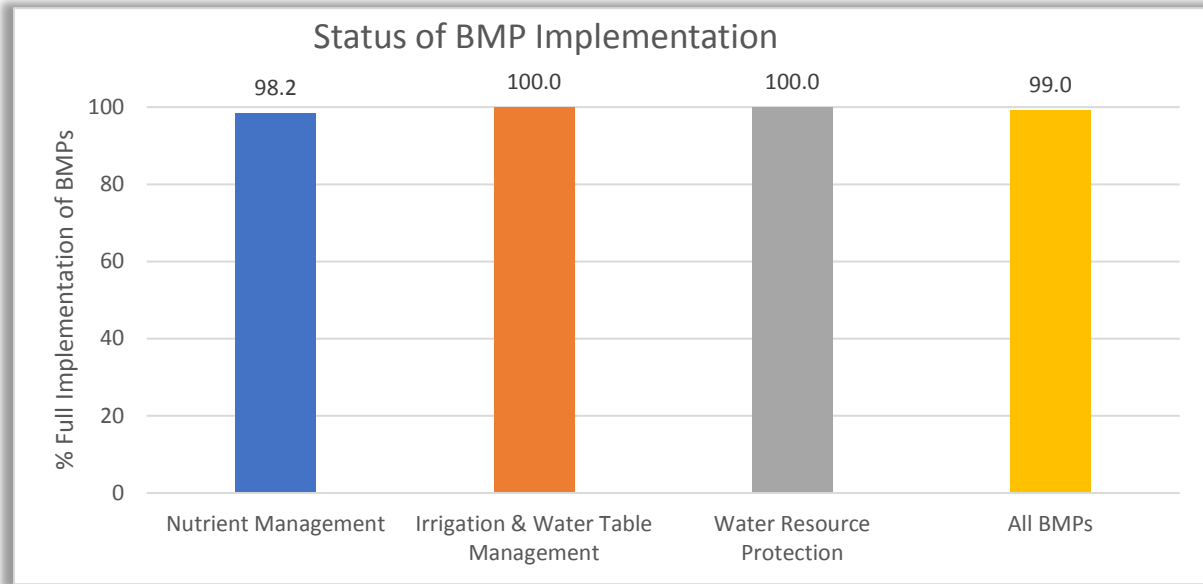
Agricultural acres enrolled in the Santa Fe River BMAP area as of 12/31/2017	
BMP Manual	Acres
Cow/Calf	18,772
Equine	9
Fruit & Nut	529
Multiple Use	25,352
Nursery	675
Row/Field Crops	35,148
Sod	197
TOTAL	80,682

Santa Fe BMAP enrolled areas through 12/31/17

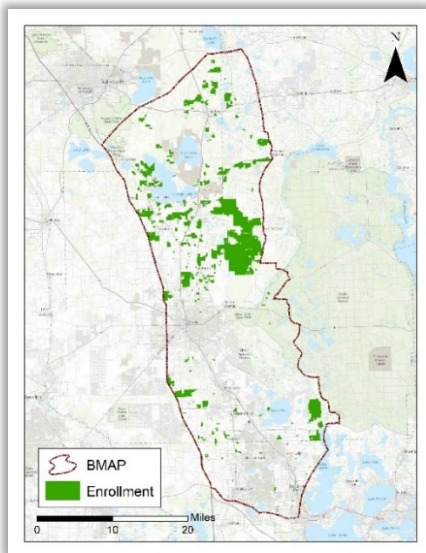
¹Status of BMP implementation data are for each NOI during the period April 1, 2017 to April 30, 2018. Map and BMP manual table information are as of December 31, 2017.

Status of Implementation of Agricultural Best Management Practices (BMPs) in the Silver River and Springs Basin¹

To enroll in the FDACS BMP program, an agricultural producer must sign a Notice of Intent (NOI) to implement BMPs. Enrollment information below is based on data from NOIs.



Enrollment and Response Summary - Silver River & Springs BMAP	
Total number of enrollments (NOIs):	264
Total agricultural acres enrolled:	23,370
Number of enrollments represented in implementation status data:	158
Enrolled ag acres represented in implementation status data BMAP area:	13,967



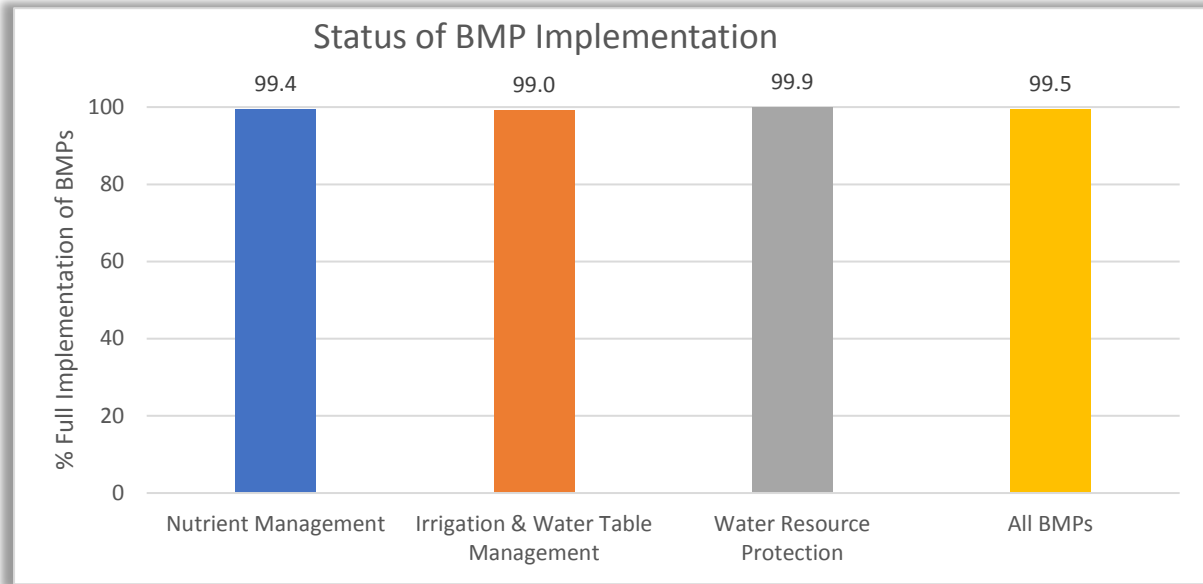
Silver River & Springs enrolled areas through 12/31/17

Agricultural acres enrolled in the Silver River & Spgs BMAP area as of 12/31/17	
BMP Manual	Acres
Citrus	499
Cow/Calf	11,297
Dairy	77
Equine	3,209
Fruit & Nut	916
Multiple Use	2,227
Nursery	324
Row/Field Crops	4,782
Sod	39
TOTAL	23,370

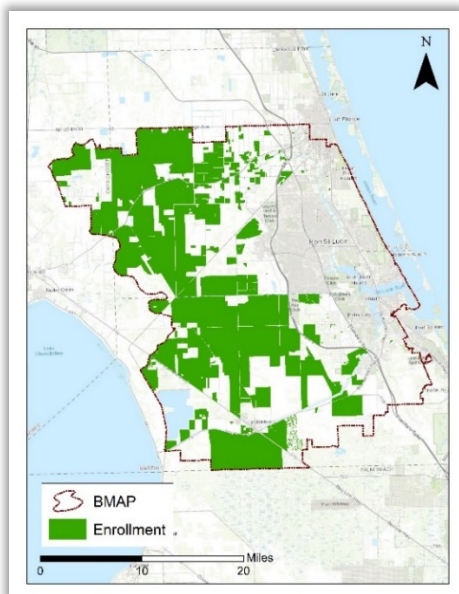
¹Status of BMP implementation data are for each NOI during the period April 1, 2017 to April 30, 2018. Map and BMP manual table information are as of December 31, 2017.

Status of Implementation of Agricultural Best Management Practices (BMPs) in the St. Lucie River and Estuary Basin¹

To enroll in the FDACS BMP program, an agricultural producer must sign a Notice of Intent (NOI) to implement BMPs. Enrollment information below is based on data from NOIs.



Enrollment and Response Summary – St. Lucie River and Estuary BMAP	
Total number of enrollments (NOIs):	306
Total agricultural acres enrolled:	135,780
Number of enrollments represented in implementation status data:	222
Enrolled ag acres represented in implementation status data:	119,488



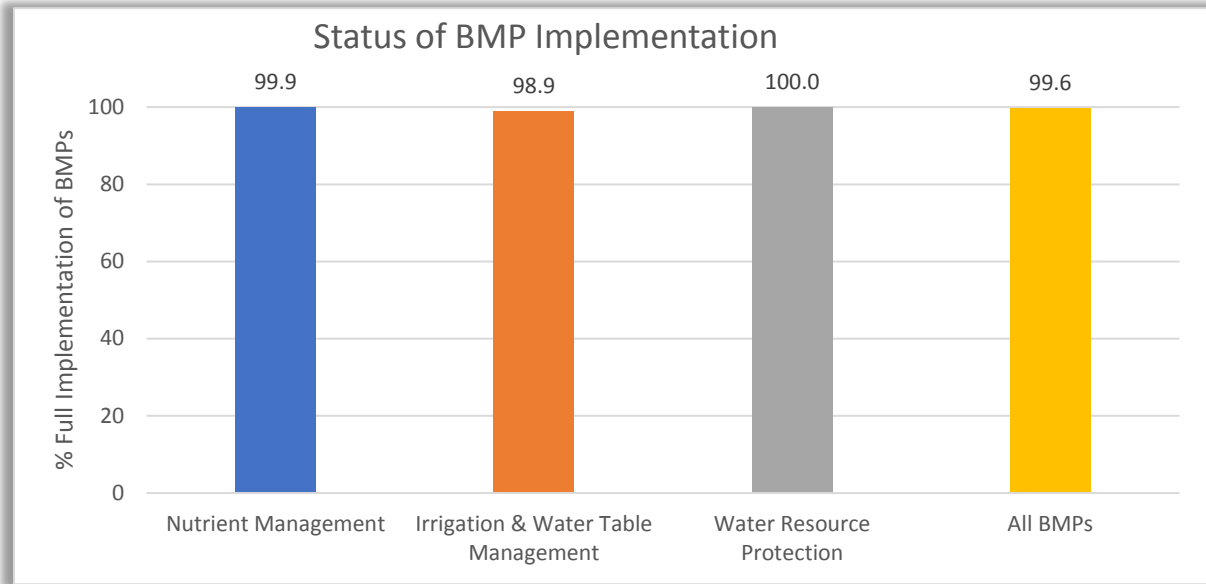
St. Lucie enrolled areas through 12/31/17

Agricultural acres enrolled in the St. Lucie BMAP area as of 12/31/2017	
BMP Manual	Acres
Citrus	16,382
Conservation Plan Rule	1,206
Cow/Calf	64,601
Dairy	6
Equine	1
Lake O Protection Plan	8,403
Multiple Use	19,768
Nursery	869
Row/Field Crops	23,285
Sod	1,259
TOTAL	135,780

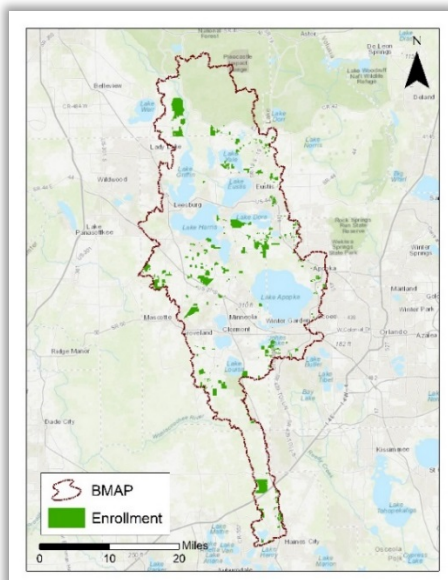
¹Status of BMP implementation data are for each NOI during the period April 1, 2017 to April 30, 2018. Map and BMP manual table information are as of December 31, 2017.

Status of Implementation of Agricultural Best Management Practices (BMPs) in the Upper Ocklawaha River Basin¹

To enroll in the FDACS BMP program, an agricultural producer must sign a Notice of Intent (NOI) to implement BMPs. Enrollment information below is based on data from NOIs.



Enrollment and Response Summary – Upper Ocklawaha River Basin	
Total number of enrollments (NOIs):	364
Total agricultural acres enrolled:	15,249
Number of enrollments represented in implementation status data:	251
Enrolled agricultural acres represented in implementation status data:	11,767



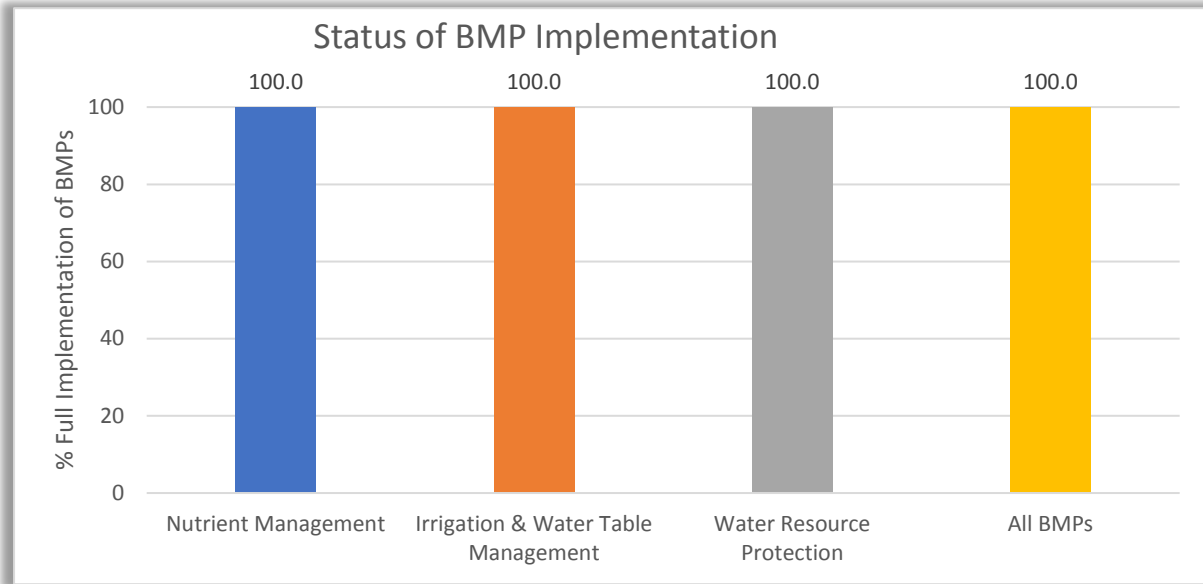
Ocklawaha River enrolled areas (through 12/31/17)

Agricultural acres enrolled in the Ocklawaha BMAP area as of 12/31/2017	
BMP Manual	Acres
Citrus	6,001
Cow/Calf	3,093
Equine	24
Fruit & Nut	2,265
Multiple Use	506
Nursery	2,230
Row/Field Crops	731
Sod	399
TOTAL	15,249

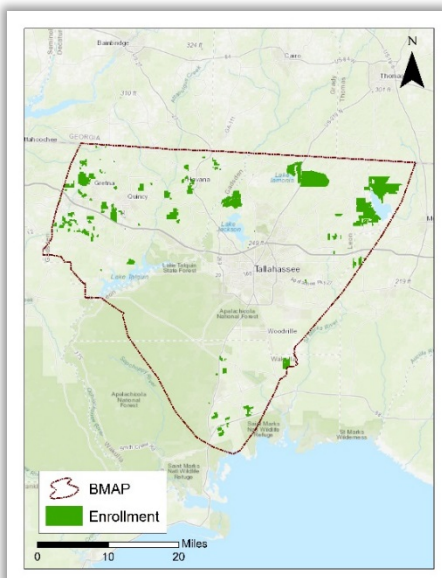
¹Status of BMP implementation data are for each NOI during the period April 1, 2017 to April 30, 2018. Map and BMP manual table information are as of December 31, 2017.

Status of Implementation of Agricultural Best Management Practices (BMPs) in the Upper Wakulla River and Wakulla Springs Basin¹

To enroll in the FDACS BMP program, an agricultural producer must sign a Notice of Intent (NOI) to implement BMPs. Enrollment information below is based on data from NOIs.



Enrollment and Response Summary – Wakulla River and Springs BMAP	
Total number of enrollments (NOIs):	78
Total agricultural acres enrolled:	15,331
Number of enrollments represented in implementation status:	54
Enrolled ag acres represented in implementation status data:	11,162



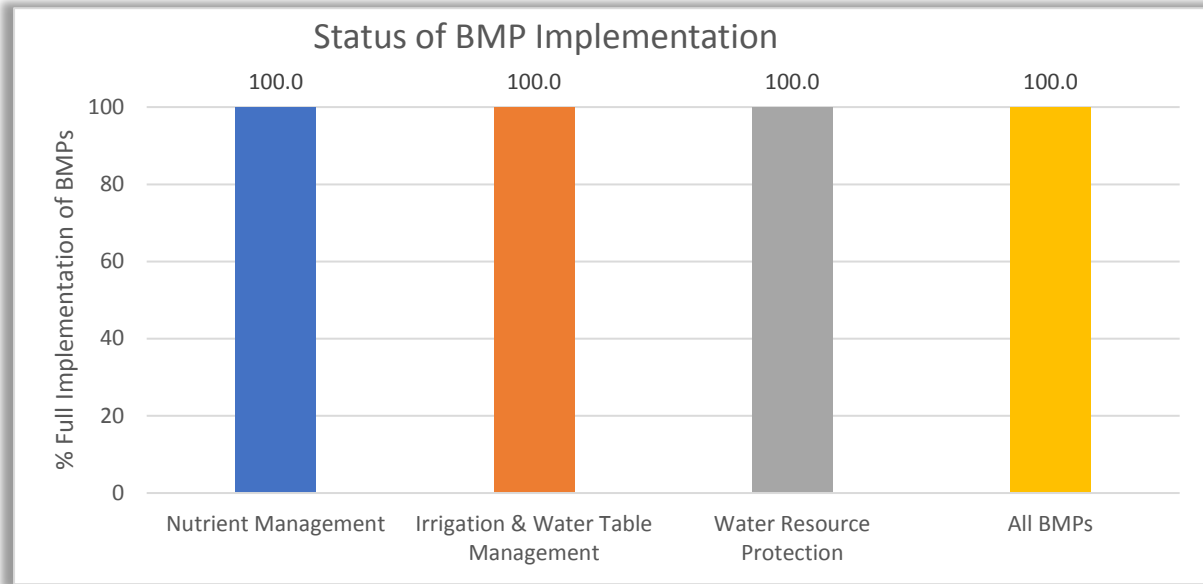
Wakulla.enrolled areas through 12/31/17

Agricultural acres enrolled in the Wakulla BMAP area as of 12/31/2017	
BMP Manual	Acres
Citrus	81
Cow/Calf	3,289
Fruit & Nut	234
Multiple Use	297
Nursery	1,291
Row/Field Crops	10,055
Sod	84
TOTAL	15,331

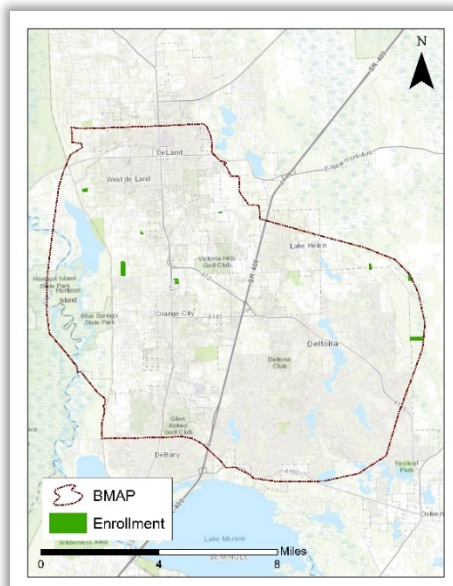
¹Status of BMP implementation data are for each NOI during the period April 1, 2017 to April 30, 2018. Map and BMP manual table information are as of December 31, 2017.

Status of Implementation of Agricultural Best Management Practices (BMPs) in the Volusia Blue Springshed Basin¹

To enroll in the FDACS BMP program, an agricultural producer must sign a Notice of Intent (NOI) to implement BMPs. Enrollment information below is based on data from NOIs.



Enrollment and Response Summary – Volusia Blue Spring BMAP	
Total number of enrollments (NOIs):	7
Total agricultural acres enrolled in the Volusia Blue BMAP area:	85
Number of enrollments represented in implementation status data:	3
Enrolled ag acres represented in implementation status data:	26



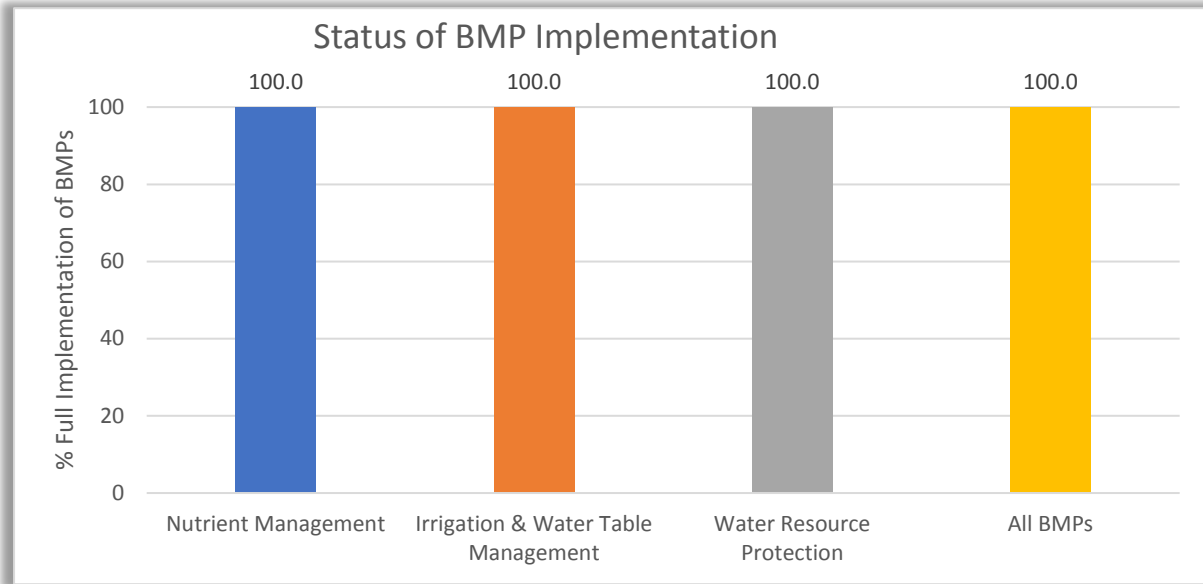
Agricultural acres enrolled in the Volusia Blue Spgs BMAP area as of 12/31/2017	
BMP Manual	Acres
Cow/Calf	48
Multiple Use	11
Nursery	19
Row/Field Crops	7
TOTAL	85

Volusia Blue Spring enrolled areas through 12/31/17

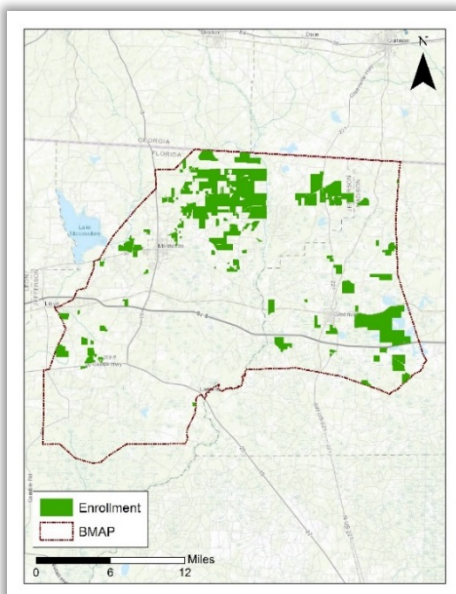
¹Status of BMP implementation data are for each NOI during the period April 1, 2017 to April 30, 2018. Map and BMP manual table information are as of December 31, 2017.

Status of Implementation of Agricultural Best Management Practices (BMPs) in the Wacissa Springs Basin¹

To enroll in the FDACS BMP program, an agricultural producer must sign a Notice of Intent (NOI) to implement BMPs. Enrollment information below is based on data from NOIs.



Enrollment and Response Summary – Wacissa Springs BMAP	
Total number of enrollments (NOIs):	55
Total agricultural acres enrolled:	16,806
Number of enrollments represented in implementation status data:	41
Enrolled ag acres represented in implementation status data:	14,522



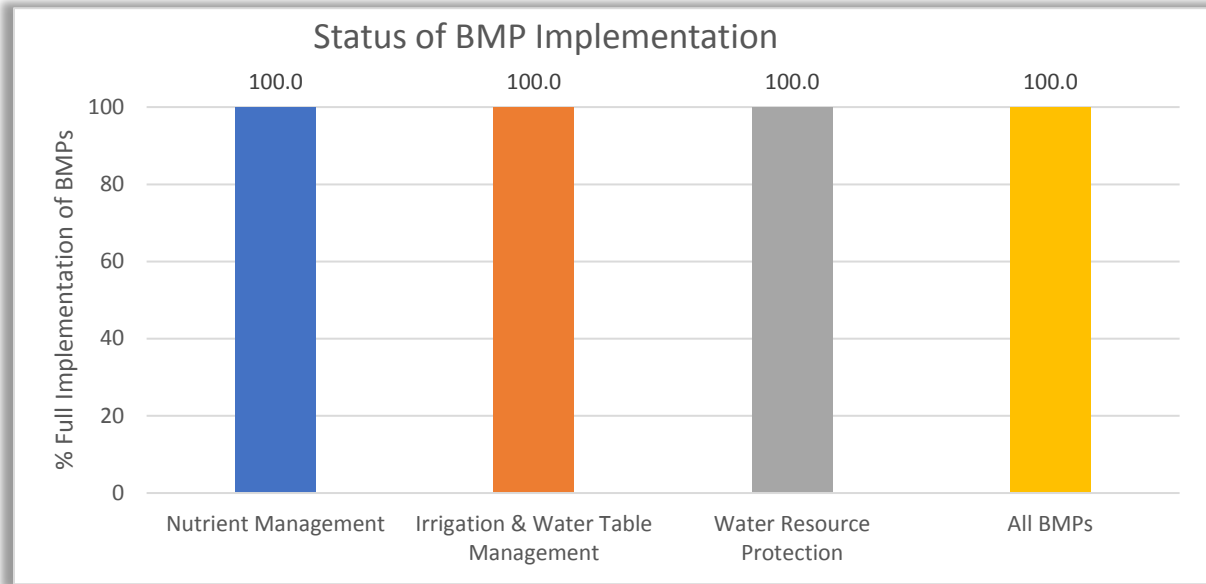
Wacissa Springs enrolled areas through 12/31/17

Agricultural acres enrolled in the Wacissa Springs BMAP area as of 12/31/ 2017	
BMP Manual	Acres
Citrus	11
Cow/Calf	5,386
Multiple Use	504
Nursery	43
Row/Field Crops	10,539
Sod	323
TOTAL	16,806

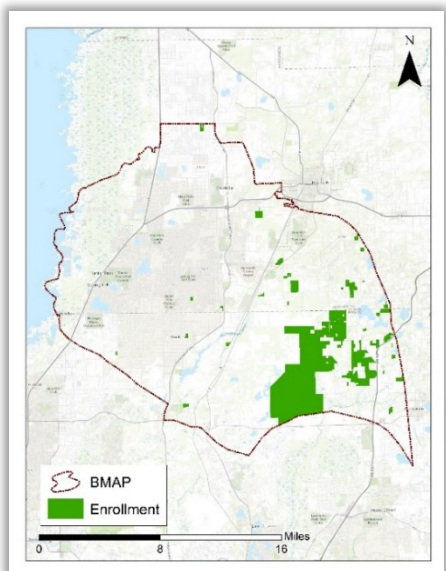
¹Status of BMP implementation data are for each NOI during the period April 1, 2017 to April 30, 2018. Map and BMP manual table information are as of December 31, 2017.

Status of Implementation of Agricultural Best Management Practices (BMPs) in the Weeki Wachee Springs and River BMAP Area¹

To enroll in the FDACS BMP program, an agricultural producer must sign a Notice of Intent (NOI) to implement BMPs. Enrollment information below is based on data from NOIs.



Enrollment and Response Summary – Weeki Wachee Springs BMAP	
Total number of enrollments (NOIs):	47
Total agricultural acres enrolled:	14,064
Number of enrollments represented in implementation status data:	39
Enrolled ag acres represented in implementation status data:	13,645



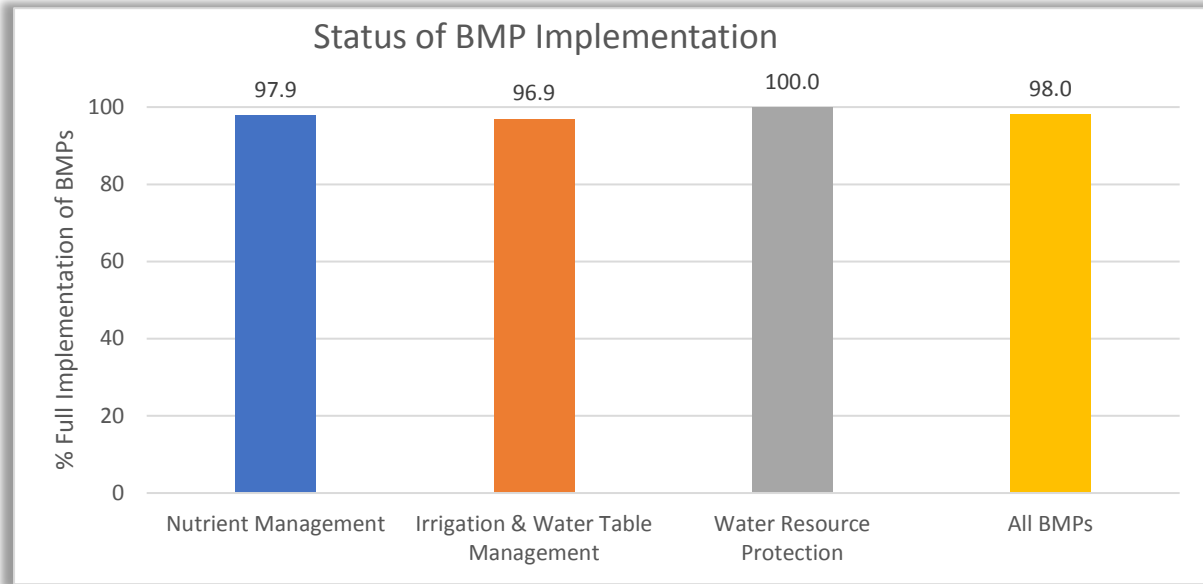
Weeki Wachee BMAP enrolled areas 12/31/17

Agricultural acres enrolled in the Weeki Wachee BMAP area as of 12/31/2017	
BMP Manual	Acres
Citrus	502
Cow/Calf	12,410
Fruit & Nut	830
Multiple Use	172
Nursery	132
Row/Field Crops	18
TOTAL	14,064

¹Status of BMP implementation data are for each NOI during the period April 1, 2017 to April 30, 2018. Map and BMP manual table information are as of December 31, 2017.

Status of Implementation of Agricultural Best Management Practices (BMPs) in the Wekiva River, Rock Springs Run, and Little Wekiva Canal Basin¹

To enroll in the FDACS BMP program, an agricultural producer must sign a Notice of Intent (NOI) to implement BMPs. Enrollment information below is based on data from NOIs.



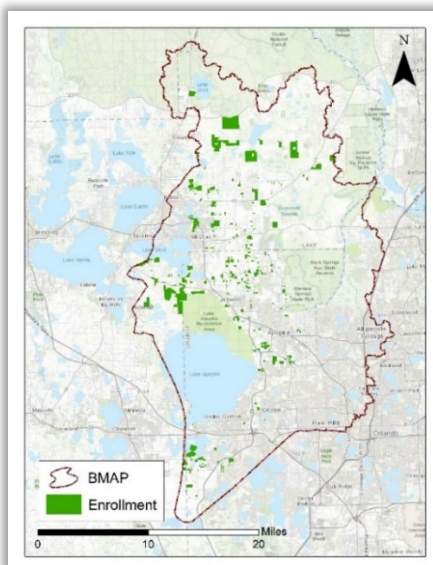
Enrollment and Response Summary – Wekiva River, Rock Spgs Run, Little Wekiva BMAP

Total number of enrollments (NOIs): **321**

Total agricultural acres enrolled: **7,185**

Number of enrollments represented in implementation status data: **159**

Enrolled ag acres represented in implementation status data: **4,249**



Wekiva enrolled areas through 12/31/17

Agricultural acres enrolled in the Wekiva BMAP area as of 12/31/2017

BMP Manual	Acres
Citrus	1,312
Cow/Calf	1,120
Equine	397
Fruit & Nut	655
Multiple Use	125
Nursery	2,366
Row/Field Crops	739
Sod	471
TOTAL	7,185

¹Status of BMP implementation data are for each NOI during the period April 1, 2017 to April 30, 2018. Map and BMP manual table information are as of December 31, 2017.