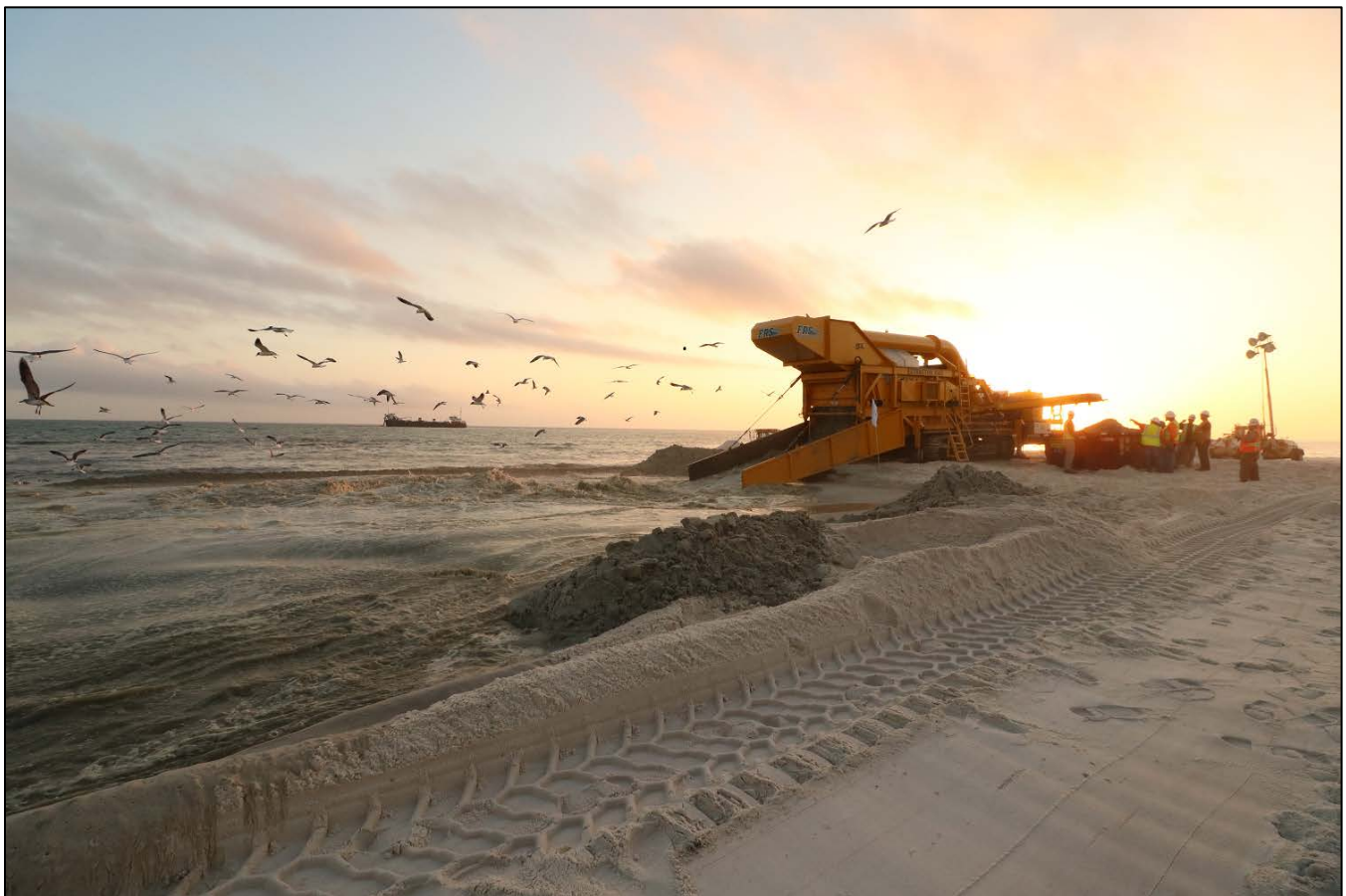


***Beach Management Funding Assistance Program
Fixed Capital Outlay Local Government Funding Requests
Fiscal Year 2018-19***

**Division of Water Restoration Assistance
Florida Department of Environmental Protection**

December 2017



*2017 Panama City Beaches Shore Protection Project
Photo courtesy of Lisa Armbruster*

3900 Commonwealth Boulevard, MS 41
Tallahassee, Florida 32399-3000
www.floridadep.gov



TABLE OF CONTENTS

Introduction 3
Beach Restoration and Nourishment Projects 4
Beach Restoration and Nourishment Projects Table 5
Beach Project Post-Construction Monitoring 8
Inlet Sand Bypassing/Inlet Management Plan Implementation Projects 9
Inlet Sand Bypassing/Inlet Management Plan Implementation Projects Table 10
Inlet Project Post-Construction Monitoring 11

Beach Management Projects

Fort Pierce Shore Protection Project 12
North and South Reaches – Brevard County Shore Protection Project 13
South Amelia Island Beach Nourishment 14
Duval County Shore Protection Project 15
Panama City Beaches Shore Protection Project 16
St. Joseph Peninsula Beach Nourishment 17
Martin County Shore Protection Project 18
Lovers Key Beach Nourishment 19
Jupiter/Carlin Segment – Palm Beach County Shore Protection Project 20
North Boca Raton Segment – Palm Beach County Shore Protection Project 21
Ocean Ridge Segment – Palm Beach County Shore Protection Project 22
Surfside Segment – Dade County Shore Protection Project 23
Delray Beach Segment – Palm Beach County Shore Protection Project 24
Phipps Ocean Park Beach Nourishment 25
Mid-Reach Segment – Brevard County Shore Protection Project 26
Juno Beach Nourishment 27
Mid-Town Beach Nourishment 28
Jupiter Island Beach Nourishment 29
Anna Maria Island Beach Nourishment (Non-federal) 30
South Boca Raton Beach Nourishment 31
Key Biscayne Beach Nourishment 32
Hillsboro Beach Nourishment 33
Vero Beach Feasibility Study 34
South Jupiter Beach Feasibility Study 35
Coral Cove Park Dune Nourishment 36
Mexico Beach Feasibility Study 37
Southern Palm Beach Island Restoration 38
South Ponte Vedra/Vilano Beach Federal Design 39
Singer Island Shore Protection Project 40
Volusia County Feasibility Study 41
Regional Monitoring 42

Inlet Management Projects

St. Lucie IMP Implementation 43
Port Everglades IMP Implementation 44
Pensacola Pass Inlet Management Study 45
East Pass Inlet Management Study 46
Wiggins Pass Inlet Management Study 47
Ft. Pierce IMP Implementation 48
Boca Raton IMP Implementation 49
Estero Bay Regional Inlet Management Study 50

INTRODUCTION

Florida is dependent on its 825 miles of sandy beaches fronting the Atlantic Ocean, Gulf of Mexico and Straits of Florida for storm protection. Healthy beaches protect public infrastructure and private upland development, provide critical habitat for many endangered and threatened species and secure recreational and economic interest along the state's sandy shoreline. According to the Florida Office of Economic and Demographic Research (2015), "the state's investment in the Beach Management Program generated a positive return on investment of 5.4.. estimated using tax revenues resulting from visitor spending... A return of greater than 1 means that the tax revenue generated by tourists to the state of Florida more than covers the state's expenditure on beaches..."

The Florida Department of Environmental Protection (DEP) is charged, in Chapter 161, Florida Statutes (F.S.), with developing and implementing a comprehensive, long-range statewide beach management plan. DEP has developed, in coordination with local sponsors and the U.S. Army Corps of Engineers (Corps), a Strategic Beach Management Plan (Strategic Plan), Long Range Budget Plan and annual inventory of beach erosion control project activities proposed for the coming fiscal year. The Strategic Plan adopts strategies for erosion control activities along critically eroded beaches and inlets. Projects must have a clearly identifiable beach management benefit consistent with the Strategic Plan to be eligible for state funding assistance.

Florida's beach management program provides funding for a variety of local government-sponsored erosion control activities (e.g., feasibility and design studies, construction of erosion control structures and engineered sand placement, and post-construction monitoring to document project performance and potential impacts). Restoration involves the initial placement of sand to rebuild a beach that has been severely eroded. Beach nourishment, or periodic maintenance, places sand on previously restored beaches at specific intervals based on project performance in order to maintain original design intent for storm protection, recreational beach area and habitat enhancement. Inlet management and inlet sand bypassing is also critical to account for the disruption of sand transport along the shoreline caused by dredging of inlets.

DEP currently designates 416.4 miles of sandy shoreline as critically eroded. Since 1998, when the Florida Legislature dedicated a portion of the Ecosystem Management and Restoration Trust Fund for beach management, nearly \$742 million has been appropriated to cost-share with local governments on local and federally authorized projects, with each level of government contributing about one-third of the cost of the entire program. This funding has resulted in the restoration and subsequent maintenance of more than 229.1 miles, or 55 percent, of the state's critically eroded beaches.

The funding requests for FY 2018-19 consist of 44 different projects, which total nearly \$57 million. The prioritized list of beach erosion control projects is organized in two sections: Beach Restoration and Nourishment Projects (Beach Projects) and Inlet Sand Bypassing/Inlet Management Plan Implementation Projects (Inlet Projects). Each section contains a list of eligible projects ranked in priority order, based on the authority in Sections 161.101 and 161.143, F.S., and the procedures outlined in Chapter 62B-36, Florida Administrative Code (F.A.C.), as amended in 2013. Post construction monitoring, required by state and federal permits, is presented on each list as a consolidated category, pursuant to Section 62B-36.003(11), F.A.C. Projects have been evaluated by DEP based on consistency with the Strategic Plan, permitting status, readiness to proceed with the proposed funding phase and the appropriateness of the amount of funding requested.

This document is organized with an overview of the Beach Projects, followed by a summary funding table with beach projects listed in priority order and a summary table for post-construction monitoring of beach projects. Next, the document provides an overview of the Inlet Projects, followed by a summary funding table with inlet projects listed in priority order and a summary table for post-construction monitoring of inlet projects. Lastly, project descriptions of individual beach and inlet projects are provided in the order they appeared in the funding tables. It is important to note that this funding request does not include funding needs associated with damage from Hurricane Irma.

BEACH RESTORATION AND NOURISHMENT PROJECTS

DEP has developed a multiyear repair and maintenance strategy to implement the state's responsibilities for a comprehensive, long-range, statewide program of beach erosion control, including beach restoration, nourishment and storm protection. The principles of this strategy are to:

- Maximize the infusion of beach-quality sand into the coastal system;
- Implement projects that contribute most significantly to addressing the state's beach erosion problems;
- Extend the life of beach restoration projects and reduce the frequency of nourishment;
- Encourage regional approaches to ensure the geographic coordination and sequencing of projects; and
- Reduce equipment mobilization and demobilization costs.

The funding requests for Beach Projects for FY 2018-19 total more than \$40 million. Projects are presented in the following order:

- Post-Construction Monitoring: a combined list of 12 projects requesting funds for state and federal permit-required monitoring.
- Beach Restoration and Nourishment Projects: a total of 30 projects requesting funds for feasibility studies, design and permitting, construction and first year post-construction monitoring (eight of these projects are also listed on the post-construction monitoring list above).
- Regional Monitoring.

Projects have been evaluated by DEP and ranked in priority order in accordance with Rule 62B-36, F.A.C. The descriptions of the proposed projects are based primarily on information provided by local governments. Funding eligibility and state cost share are calculated individually for each project based on public access, as defined by program rule, but have yet to be field verified.

BEACH RESTORATION AND NOURISHMENT PROJECTS

Rank	Project	Local Sponsor	Project Phase	Federal	State	Local	Total	Cumulative State Total
	Post-Construction Monitoring (1)	Various	Monitoring	\$313,569	\$841,352	\$1,276,729	\$2,431,650	\$841,352
1	Fort Pierce Shore Protection Project (2)	St. Lucie County	Construction	\$369,000	\$53,000	\$53,000	\$475,000	\$894,352
2	North and South Reaches - Brevard County Shore Protection Project	Brevard County	Construction	\$0	\$517,230	\$532,770	\$1,050,000	\$1,411,582
3	South Amelia Island Beach Nourishment (3)	Nassau County	Design	\$33,928	\$97,296	\$143,776	\$275,000	\$1,508,878
4	Duval County Shore Protection Project	City of Jacksonville	Construction	\$12,063,870	\$2,729,471	\$3,091,537	\$17,884,878	\$4,238,349
5	Panama City Beaches Shore Protection Project (2)	Bay County	Design, Construction	\$0	\$986,367	\$1,627,220	\$2,613,587	\$5,224,716
6	St. Joseph Peninsula Beach Nourishment	Gulf County	Design	\$0	\$76,000	\$124,000	\$200,000	\$5,300,716
7	Martin County Shore Protection Project	Martin County	Design, Construction	\$7,100,000	\$3,451,450	\$4,084,467	\$14,635,917	\$8,752,166
8	Lovers Key Beach Nourishment	Lee County	Design	\$0	\$260,000	\$260,000	\$520,000	\$9,012,166
9	Jupiter/Carlin Segment - Palm Beach County Shore Protection Project	Palm Beach County	Construction	\$0	\$7,300,000	\$7,300,000	\$14,600,000	\$16,312,166
10	North Boca Raton Segment - Palm Beach County Shore Protection Project	City of Boca Raton	Design	\$34,500	\$12,750	\$12,750	\$60,000	\$16,324,916
11	Ocean Ridge Segment - Palm Beach County Shore Protection Project	Palm Beach County	Design	\$194,800	\$102,600	\$102,600	\$400,000	\$16,427,516
12	Surfside Segment - Dade County Shore Protection Project	Miami-Dade County	Construction	\$4,528,000	\$1,803,500	\$1,803,500	\$8,135,000	\$18,231,016

- (1) Environmental and physical monitoring required by state and federal permits after the first year of monitoring has been consolidated on the Post-construction Monitoring List. A total of 12 previously constructed projects require monitoring activities for FY 2018-19. A complete monitoring project listing can be found on Page 8. First year monitoring has been included with construction funds.
- (2) Funding request is for reimbursement of a shortfall balance for projects that received a previous appropriation but had a remaining eligible state share balance.
- (3) Federal Emergency Management Agency (FEMA) Project Worksheet was received. The request includes FEMA funding assistance for Hurricane Matthew storm recovery.

BEACH RESTORATION AND NOURISHMENT PROJECTS (CONTINUED)

Beach Management Funding Assistance Program FY 2018-19 Local Government Funding Requests

Rank	Project	Local Sponsor	Project Phase	Federal	State	Local	Total	Cumulative State Total
13	Delray Beach Segment - Palm Beach County Shore Protection Project	City of Delray Beach	Design	\$704,125	\$272,937	\$272,938	\$1,250,000	\$18,503,953
14	Phipps Ocean Park Beach Nourishment	Town of Palm Beach	Construction	\$0	\$7,410,000	\$11,590,000	\$19,000,000	\$25,913,953
15	Mid-Reach Segment - Brevard County Shore Protection Project	Brevard County	Construction (Mitigation)	\$0	\$300,000	\$300,000	\$600,000	\$26,213,953
16	Juno Beach Nourishment	Palm Beach County	Design, Construction	\$75,000	\$7,437,500	\$7,437,500	\$14,950,000	\$33,651,453
17	Mid-Town Beach Nourishment (2)	Town of Palm Beach	Construction	\$0	\$538,146	\$776,007	\$1,314,153	\$34,189,599
18	Jupiter Island Beach Nourishment	Town of Jupiter Island	Design, Construction	\$0	\$41,782	\$183,218	\$225,000	\$34,231,381
19	Anna Maria Island Beach Nourishment (Non-federal)	Manatee County	Feasibility	\$0	\$75,000	\$75,000	\$150,000	\$34,306,381
20	South Boca Raton Beach Nourishment	City of Boca Raton	Design, Construction	\$0	\$960,066	\$1,523,934	\$2,484,000	\$35,266,447
21	Key Biscayne Beach Nourishment	Village of Key Biscayne	Feasibility, Design, Construction	\$0	\$911,036	\$967,388	\$1,878,424	\$36,177,483
22	Hillsboro Beach Nourishment	Town of Hillsboro Beach	Design, Construction	\$1,302,075	\$15,851	\$618,174	\$1,936,100	\$36,193,334
23	Vero Beach Feasibility Study (3)	Indian River County	Feasibility, Design, Construction	\$938,904	\$1,748,751	\$1,987,345	\$4,675,000	\$37,942,085
24	South Jupiter Beach Feasibility Study	Palm Beach County	Feasibility	\$0	\$83,293	\$83,292	\$166,585	\$38,025,378
25	Coral Cove Park Dune Nourishment	Palm Beach County	Construction	\$0	\$400,000	\$400,000	\$800,000	\$38,425,378
26	Mexico Beach Feasibility Study	Bay County	Feasibility	\$0	\$30,877	\$30,878	\$61,755	\$38,456,255

- (1) Environmental and physical monitoring required by state and federal permits after the first year of monitoring has been consolidated on the Post-construction Monitoring List. A total of 12 previously constructed projects require monitoring activities for FY 2018-19. A complete monitoring project listing can be found on Page 8. First year monitoring has been included with construction funds.
- (2) Funding request is for reimbursement of a shortfall balance for projects that received a previous appropriation but had a remaining eligible state share balance.
- (3) Federal Emergency Management Agency (FEMA) Project Worksheet was received. The request includes FEMA funding assistance for Hurricane Matthew storm recovery.

BEACH RESTORATION AND NOURISHMENT PROJECTS (CONTINUED)

Rank	Project	Local Sponsor	Project Phase	Federal	State	Local	Total	Cumulative State Total
27	Southern Palm Beach Island Restoration	Palm Beach County	Feasibility, Design	\$0	\$413,000	\$437,000	\$850,000	\$38,869,255
28	South Ponte Vedra/Vilano Beach Federal Design	St. Johns County	Design	\$277,000	\$147,975	\$778,025	\$1,203,000	\$39,017,230
29	Singer Island Shore Protection Project	Palm Beach County	Construction	\$0	\$537,900	\$962,100	\$1,500,000	\$39,555,130
30	Volusia County Feasibility Study	Volusia County	Feasibility	\$0	\$200,000	\$200,000	\$400,000	\$39,755,130
31	Regional Monitoring	DEP	Monitoring	\$0	\$250,000	\$0	\$250,000	\$40,005,130
	TOTAL			\$27,934,771	\$40,005,130	\$49,035,148	\$116,975,049	

BEACH RESTORATION AND NOURISHMENT POST-CONSTRUCTION MONITORING

PROJECT DESCRIPTION:

This category serves to provide funding for monitoring activities associated with previously constructed projects. Eligible program activities include physical and biological monitoring required by permit.

FUNDS REQUESTED:

Funds will be used to support the following projects identified in priority order. First year monitoring required by permit is included in the construction funds on the Beach Projects list.

Project	Federal	State	Local	Total
Fort Pierce Shore Protection Project	\$0	\$130,000	\$130,000	\$260,000
South Amelia Island Beach Nourishment	\$0	\$4,157	\$6,143	\$10,300
Panama City Beaches Shore Protection Project	\$0	\$205,683	\$339,317	\$545,000
St. Joseph Peninsula Beach Nourishment	\$0	\$95,000	\$155,000	\$250,000
Pensacola Beach Nourishment	\$0	\$100,500	\$100,500	\$201,000
Delray Beach Segment - Palm Beach County Shore Protection Project	\$69,118	\$26,792	\$26,791	\$122,701
Segment II - Broward County Shore Protection Project	\$244,451	\$81,113	\$118,085	\$443,649
Phipps Ocean Park Beach Nourishment	\$0	\$27,690	\$43,310	\$71,000
Central Boca Raton Beach Nourishment (1)	\$0	\$14,812	\$20,188	\$35,000
Mid-Town Beach Nourishment	\$0	\$33,988	\$49,012	\$83,000
Jupiter Island Beach Nourishment	\$0	\$38,997	\$171,003	\$210,000
South Siesta Key Beach Nourishment	\$0	\$82,620	\$117,380	\$200,000
TOTAL	\$313,569	\$841,352	\$1,276,729	\$2,431,650

(1) Funding request is for reimbursement of a shortfall balance for projects that received a previous appropriation but had a remaining eligible state share balance.

INLET SAND BYPASSING/INLET MANAGEMENT PLAN IMPLEMENTATION PROJECTS

Navigational inlets are critical components of the state's commercial and recreational infrastructure, but they contribute significantly to beach erosion by interrupting or altering the natural drift of sand. For this reason, the Legislature has directed DEP to further commit its comprehensive beach management efforts to addressing beach erosion caused by inlets. Funding for the inlet projects will be used to implement the actions recommended in the specific Inlet Management Plans (IMP) or the statewide Strategic Plan. IMPs adopted by DEP are incorporated into the Strategic Plan by reference along with other inlet management strategies. Feasibility studies conducted by local governments, federal and state studies and reports, and the study reports authorizing federal shore protection projects are also incorporated by reference. Inlet management projects include, but are not limited to, inlet sand bypassing, modifications to channel dredging, jetty redesign, jetty repair, disposal of dredge material, and the development, revision, adoption or implementation of an IMP.

The Legislature amended Section 161.142, F.S., and created Section 161.143, F.S., in 2008 to strengthen DEP's commitment to managing sediment around inlets. These sections direct DEP to develop and maintain sediment budgets for each inlet and ensure beach quality sand is placed on adjacent eroding beaches. It further establishes funding priorities and ranking criteria for inlet projects and requires DEP to provide an annual inlet project list to the Legislature for consideration of funding. Rule 62B-36, F.A.C., was amended in August 2013 to incorporate new ranking criteria specific to inlet projects. These new criteria were used in ranking projects for FY 2018-19. Post-construction monitoring is consolidated into a single category, pursuant to Rule 62B-36.003, F.A.C.

The funding requirements provided in Section 161.143, F.S., also include provisions that:

- At least 10 percent of the total amount appropriated by the Legislature will be used for the three highest-ranked inlet projects;
- At least 50 percent of the funds appropriated for the feasibility and design category will be made available for inlet management projects which involve the study, design or development of an inlet management project; and
- Inlet projects may receive 75 percent state cost share for the proposed activity.

In FY 2018-19, funding requests for 10 Inlet Sand Bypassing/Inlet Management Plan Implementation Projects (Inlet Projects) are included in the Beach Management Funding Assistance Program. These projects total nearly \$17 million in requested state funding. The funding priorities established by DEP must be consistent with the requirements and legislative declaration in Sections 161.101(14), 161.142, 161.143 and 161.161(1)(b), F.S. Projects are presented in the following order:

- Post-Construction Monitoring: a combined list of four projects requesting funds for state and federal permit-required monitoring; and
- Inlet Management Implementation/Inlet Sand Bypassing Projects: a total of eight projects requesting funds for feasibility studies, design and permitting activities, construction and first year post-construction monitoring (two of these projects are also listed on the post-construction monitoring list above).

INLET SAND BYPASSING/INLET MANAGEMENT PLAN IMPLEMENTATION PROJECTS

Rank	Project Name	Local Sponsor	Project Phase	Federal	State	Local	Total	Cumulative State Total
	Post Construction Monitoring (1)	Various	Monitoring	\$0	\$681,600	\$227,200	\$908,800	\$681,600
1	St. Lucie IMP Implementation	Martin County	Construction	\$15,628,500	\$8,058,375	\$2,686,125	\$26,373,000	\$8,739,975
2	Port Everglades IMP Implementation (2)	Broward County	Construction	\$0	\$5,297,687	\$1,765,896	\$7,063,583	\$14,037,662
3	Pensacola Pass Inlet Management Study	Escambia County	Feasibility	\$0	\$311,250	\$103,750	\$415,000	\$14,348,912
4	East Pass Inlet Management Study (2)	Okaloosa County	Feasibility	\$0	\$71,099	\$23,699	\$94,798	\$14,420,011
5	Wiggins Pass Inlet Management Study	Collier County	Design, Construction	\$0	\$1,368,750	\$456,250	\$1,825,000	\$15,788,761
6	Fort Pierce IMP Implementation (2)	St. Lucie County	Construction	\$0	\$679,500	\$226,500	\$906,000	\$16,468,261
7	Boca Raton IMP Implementation	City of Boca Raton	Design, Construction	\$0	\$116,250	\$38,750	\$155,000	\$16,584,511
8	Estero Bay Regional Inlet Management Study	Lee County	Feasibility	\$0	\$158,474	\$52,824	\$211,298	\$16,742,985
	TOTAL			\$15,628,500	\$16,742,985	\$5,580,994	\$37,952,479	

- (1) Environmental and physical monitoring required by state and federal permits has been consolidated on the Post-construction Monitoring list. A total of four previously constructed projects require monitoring activities for FY 2018-19. A complete monitoring project listing can be found on Page 11.
- (2) Funding request is for reimbursement of a shortfall balance for projects that received a previous appropriation but had a remaining eligible state share balance.

INLET MANAGEMENT POST-CONSTRUCTION MONITORING

PROJECT DESCRIPTION:

This category serves to provide funding for monitoring activities associated with previously constructed projects. Eligible program activities include physical and biological monitoring required by permit.

FUNDS REQUESTED:

Funds will be used to support the following projects identified in priority order.

Post Construction Monitoring	Federal Cost	State cost	Local cost	Total
Lake Worth IMP Implementation	\$0	\$207,750	\$69,250	\$277,000
St. Lucie IMP Implementation	\$0	\$337,500	\$112,500	\$450,000
South Lake Worth IMP Implementation (1)	\$0	\$120,000	\$40,000	\$160,000
Boca Raton IMP Implementation	\$0	\$16,350	\$5,450	\$21,800
TOTAL	\$0	\$681,600	\$227,200	\$908,800

- (1) Funding request is for reimbursement of a shortfall balance for projects that received a previous appropriation but had a remaining eligible state share balance.

NAME OF PROJECT: Fort Pierce Shore Protection Project

LOCAL SPONSOR: St. Lucie County

LOCAL CONTACT: Richard Bouchard **PHONE:** (772) 462-1710

PROJECT DESCRIPTION:

The federal Fort Pierce Shore Protection Project consists of nourishment of approximately 1.3 miles of shoreline between DEP Monuments R34 – R41 in St. Lucie County. The federal project was restored in 1971 with nourishments in 1981 and 1999. Since 1999, 12 nourishments were completed totaling placement of approximately 4.44 million cubic yards of beach compatible material. These events used an offshore borrow area except for an emergency truck haul in 2011, which used an upland sand source. The next nourishment is scheduled for spring 2018. Staff has determined that 100 percent of the project is eligible for state cost sharing.

FUNDS WILL BE USED FOR:

Construction (reimbursement for the 2015 nourishment).

Federal	State	Local	Total
\$369,000	\$53,000	\$53,000	\$475,000

NAME OF PROJECT: North and South Reaches – Brevard County Shore Protection Project

LOCAL SPONSOR: Brevard County

LOCAL CONTACT: Mike McGarry **PHONE:** (321) 633-2016

PROJECT DESCRIPTION:

The project consists of the North and South Reach segments of the Brevard County Shore Protection Project, totaling 13.6 miles of shoreline between DEP Monuments R1 – R54.5 (North) and R118.3 – R139 (South) in Brevard County. This project includes construction phase observation and during-construction physical and biological surveys. Construction is planned for FY 2017-18. Post-construction monitoring tasks include physical and biological monitoring plus beach tilling. Staff has determined that 98.52 percent is eligible for state cost sharing.

FUNDS WILL BE USED FOR:

Construction and first year monitoring.

Federal	State	Local	Total
\$0	\$517,230	\$532,770	\$1,050,000

NAME OF PROJECT: South Amelia Island Beach Nourishment

LOCAL SPONSOR: Nassau County

LOCAL CONTACT: Shanea Jones **PHONE:** (904) 530-6010

PROJECT DESCRIPTION:

The South Amelia Island Beach Nourishment project consists of the restoration and ongoing maintenance of approximately 3.5 miles of shoreline located between DEP Monuments R59 – R79 on South Amelia Island in Nassau County. Project monitoring between 2005 and 2017 has indicated that the project structures have performed as designed and no adverse impacts have occurred to resources within Nassau Sound. The last hydrographic survey of Nassau Sound occurred in summer 2016. This request for funding will include design tasks in preparation for the anticipated spring 2020 nourishment project. Staff has determined that 80.72 percent is eligible for state cost sharing.

FUNDS WILL BE USED FOR:

Design.

Federal	State	Local	Total
\$33,928	\$97,296	\$143,776	\$275,000

NAME OF PROJECT: Duval County Shore Protection Project

LOCAL SPONSOR: City of Jacksonville

LOCAL CONTACT: Thomas Fallin **PHONE:** (904) 255-8710

PROJECT DESCRIPTION:

The Duval County Shore Protection Project consists of the restoration and maintenance of approximately 10.1 miles of beach and dunes between DEP Monuments R31 – R80 in Duval County. The federally authorized project was restored in 1980. Funding is requested for the most recent nourishment, consisting of the placement of approximately 222,088 cubic yards of material on the beach and an additional 193,000 cubic yards on the dune. This project was completed in May 2017 following the passage of Hurricane Matthew. Staff has determined that 93.78 percent is eligible for state cost sharing.

FUNDS WILL BE USED FOR:

Construction.

Federal	State	Local	Total
\$12,063,870	\$2,729,471	\$3,091,537	\$17,884,878

NAME OF PROJECT: Panama City Beaches Shore Protection Project

LOCAL SPONSOR: Bay County

LOCAL CONTACT: Dan Rowe **PHONE:** (850) 233-5070

PROJECT DESCRIPTION:

The Panama City Beaches Shore Protection Project consists of the maintenance of approximately 18 miles of shoreline between DEP Monuments R1 – R91 in Bay County. The project was restored in 1999, with subsequent nourishments in 2006, using emergency funds in response to Hurricane Ivan, and again in 2011. In May 2017, segments of the project (totaling 4 miles of shoreline) were nourished to address hotspots of beach erosion. Funding is requested for tasks associated with the nourishment of these segments. Staff has been provided with a determination that 75.48 percent of the project is eligible for state cost sharing, which is under review.

FUNDS WILL BE USED FOR:

Design, construction and first year monitoring.

Federal	State	Local	Total
\$0	\$986,367	\$1,627,220	\$2,613,587

NAME OF PROJECT: St. Joseph Peninsula Beach Nourishment

LOCAL SPONSOR: Gulf County

LOCAL CONTACT: Don Butler **PHONE:** (850) 229-6106

PROJECT DESCRIPTION:

The St. Joseph Peninsula Beach Nourishment project consists of the nourishment of approximately 7.5 miles of shoreline between DEP Monuments R67 – R105.5 in Gulf County. This project proposes to use funds for the design of coastal structures. Staff has determined that 76 percent of the project is eligible for state cost sharing.

FUNDS WILL BE USED FOR:

Design.

Federal	State	Local	Total
\$0	\$76,000	\$124,000	\$200,000

NAME OF PROJECT: Martin County Shore Protection Project

LOCAL SPONSOR: Martin County

LOCAL CONTACT: Kathy FitzPatrick **PHONE:** (727) 288-5429

PROJECT DESCRIPTION:

The Martin County Shore Protection Project consists of the nourishment of approximately 4.2 miles of shoreline between DEP Monuments R1 – R25.6 in Martin County. The federal project was initially constructed in 1995-96. Nourishment of a portion of the project was conducted in 2001 and 2002. Full nourishment projects were completed in 2005 and 2015. The next nourishment is scheduled for FY 2018-19. Staff has determined that 90.87 percent of the project is eligible for state cost sharing.

FUNDS WILL BE USED FOR:

Federal reconciliation of previous project costs, design, construction and first year monitoring.

Federal	State	Local	Total
\$7,100,000	\$3,451,450	\$4,084,467	\$14,635,917

NAME OF PROJECT: Lovers Key Beach Nourishment

LOCAL SPONSOR: Lee County

LOCAL CONTACT: Steve Boutelle **PHONE:** (239) 533-8128

PROJECT DESCRIPTION:

The Lovers Key Beach Nourishment project includes approximately 1.1 miles of shoreline between DEP Monuments R214 – R221 in Lee County. Restoration was completed in 2004, with nourishment in 2014. Funding is requested for design tasks associated with a sand search for the next nourishment. Staff has determined that 100 percent of the project is eligible for state cost sharing.

FUNDS WILL BE USED FOR:

Design ~~(sand search)~~.

Federal	State	Local	Total
\$0	\$260,000	\$260,000	\$520,000

NAME OF PROJECT: Jupiter/Carlin Segment – Palm Beach County Shore Protection Project

LOCAL SPONSOR: Palm Beach County

LOCAL CONTACT: Michael Stahl **PHONE:** (561) 233-2433

PROJECT DESCRIPTION:

The Jupiter/Carlin Beach Nourishment project includes approximately 1.1 miles of shoreline between DEP Monuments R13 – R19 in Palm Beach County. The federally authorized project was restored in 1995 and nourished in 2002. The project receives routine bypass material from Jupiter Inlet. A federal Section 934 Report, required for continued federal cost sharing, is ongoing. A dune restoration project was completed in January 2013 in response to Hurricane Sandy. The federal storm repair project was completed by the Corps in April 2015 and was combined with sand bypassing from the Jupiter Inlet District and a local-option truck haul project from Palm Beach County. In the most recent event, bypassed sand was placed within the project by Jupiter Inlet District in early 2017. Funding is requested for the next nourishment, which is scheduled for FY 2018-19. Staff has determined that 100 percent of the project is eligible for state cost sharing.

FUNDS WILL BE USED FOR:

Construction and first year monitoring.

Federal	State	Local	Total
\$0	\$7,300,000	\$7,300,000	\$14,600,000

NAME OF PROJECT: North Boca Raton Segment – Palm Beach County Shore Protection Project

LOCAL SPONSOR: City of Boca Raton

LOCAL CONTACT: Jennifer Bistyga **PHONE:** (561) 416-3397

PROJECT DESCRIPTION:

The North Boca Raton Shore Protection Project includes 1.5 miles of shoreline between DEP Monuments R205 – R212 in Palm Beach County. Restoration was completed in 1988 with nourishments in 1998 and 2010. The federal Hurricane Sandy storm repair project was completed in FY 2014-15. The project is currently in post-construction monitoring phase, and is requesting design funds for the next nourishment. Staff has determined that 100 percent of the project is eligible for state cost sharing.

FUNDS WILL BE USED FOR:

Design.

Federal	State	Local	Total
\$34,500	\$12,750	\$12,750	\$60,000

NAME OF PROJECT: Ocean Ridge Segment – Palm Beach County Shore Protection Project

LOCAL SPONSOR: Palm Beach County

LOCAL CONTACT: Michael Stahl **PHONE:** (561) 233-2433

PROJECT DESCRIPTION:

The Ocean Ridge Beach Nourishment project extends along 1.4 miles of shoreline between DEP Monuments R152 – R159 in Palm Beach County. The federally authorized project initially included beach restoration and construction of eight T-head groins in 1998. Nourishment was completed in 2005, covering 1.1 miles of the project to the south of the groin field. Maintenance disposal material from the South Lake Worth Inlet sand trap was placed in 2008. Bypass material from the South Lake Worth Inlet sand transfer plant is pumped to the project area year-round. Construction of a 2.25-acre mitigation reef was completed in 2011. A federal storm repair project was completed in 2014 to replace losses sustained during Hurricane Sandy. Funding is requested for design tasks for the next nourishment scheduled for FY 2021-22. Staff has determined that 100 percent of the project is eligible for state cost sharing.

FUNDS WILL BE USED FOR:

Design (sand search and Limited Re-evaluation Report).

Federal	State	Local	Total
\$194,800	\$102,600	\$102,600	\$400,000

NAME OF PROJECT: Surfside Segment – Dade County Shore Protection Project

LOCAL SPONSOR: Miami-Dade County

LOCAL CONTACT: Jamie Monty **PHONE:** (305) 372-6853

PROJECT DESCRIPTION:

The Dade County Shore Protection Project consists of the nourishment of approximately 13.4 miles of shoreline within the municipal boundaries of Sunny Isles, Bal Harbour, Surfside and Miami Beach between DEP Monuments R7 – R74 in Miami-Dade County. Restoration was first initiated in 1972 with the final segments being added in 1986. Federal nourishment projects are constructed periodically on an as-needed basis with hotspot nourishment being conducted by the County using upland sand between federal projects. In FY 2018-19, a federal truck haul nourishment is planned for 1 mile in Surfside between R32 – R36. Staff has estimated that the project segment is 100 percent eligible for state cost sharing.

FUNDS WILL BE USED FOR:

Construction and first year monitoring.

Federal	State	Local	Total
\$4,528,000	\$1,803,500	\$1,803,500	\$8,135,000

NAME OF PROJECT: Delray Beach Segment – Palm Beach County Shore Protection Project

LOCAL SPONSOR: City of Delray Beach

LOCAL CONTACT: Bob Diaz **PHONE:** (561) 243-7343

PROJECT DESCRIPTION:

The Delray Beach Shore Protection Project includes 2.7 miles of shoreline between DEP Monuments R175+300' – R188A in Palm Beach County. The federal project was restored in 1973, with nourishments in 1978, 1984, 1992, 2002, 2005 and 2013. A federal Flood Control and Coastal Emergency storm repair project was constructed in 2014 to address damage from Hurricane Sandy. Proposed activities include design of the next nourishment project. Staff has determined that 100 percent of the project is eligible for state cost sharing.

FUNDS WILL BE USED FOR:

Design.

Federal	State	Local	Total
\$704,125	\$272,937	\$272,938	\$1,250,000

NAME OF PROJECT: Phipps Ocean Park Beach Nourishment

LOCAL SPONSOR: Town of Palm Beach

LOCAL CONTACT: Robert Weber **PHONE:** (561) 383-5440

PROJECT DESCRIPTION:

The Phipps Ocean Park Beach Nourishment includes 1.4 miles of shoreline between DEP Monuments R118.7 – R126 in Palm Beach County. In 2004, a 3.1-acre mitigation reef was constructed to compensate for impacts to hardbottom resources in advance of the 2006 restoration. A FEMA dune project was completed in 2011 to repair damage sustained during Tropical Storm Fay. An interim dune nourishment was completed in 2015 in coordination with the Mid-Town project. Funding reimbursement is requested for the winter 2016 nourishment. Staff has estimated that 78 percent of the project is eligible for state cost sharing.

FUNDS WILL BE USED FOR:

Construction (reimbursement).

Federal	State	Local	Total
\$0	\$7,410,000	\$11,590,000	\$19,000,000

NAME OF PROJECT: Mid-Reach Segment – Brevard County Shore Protection Project

LOCAL SPONSOR: Brevard County

LOCAL CONTACT: Mike McGarry **PHONE:** (321) 633-2016

PROJECT DESCRIPTION:

The Mid-Reach segment of the Brevard County Shore Protection Project consists of 7.8 miles of shoreline between DEP Monuments R75.3 – R118.3 in Brevard County. This project will consist of activities to ensure permit compliance of federal construction of mitigation reefs, monitor impacts to nearshore resources, test the success of mitigation reefs, and conduct physical and biological monitoring during construction. Staff has determined that 100 percent is eligible for state cost sharing.

FUNDS WILL BE USED FOR:

Construction (observation and during-construction monitoring).

Federal	State	Local	Total
\$0	\$300,000	\$300,000	\$600,000

NAME OF PROJECT: Juno Beach Nourishment

LOCAL SPONSOR: Palm Beach County

LOCAL CONTACT: Michael Stahl **PHONE:** (561) 233-2433

PROJECT DESCRIPTION:

The Juno Beach Nourishment project includes approximately 2.4 miles of shoreline between DEP Monuments R26 – R38 in Palm Beach County, beginning 2.2 miles down drift of Jupiter Inlet. The original project was completed in 2001 and impacted by tropical cyclones in 2004, 2005 and 2008. The first nourishment was completed in March 2010. Planning, engineering and design for a second nourishment are nearly complete. A Joint Coastal Permit application is currently under review and is anticipated to be issued in 2017. Construction is proposed for winter 2018. Staff has determined that the project is 100 percent eligible for state cost sharing.

FUNDS WILL BE USED FOR:

Design (Limited Re-evaluation Report and pre-construction monitoring), construction and first year monitoring.

Federal	State	Local	Total
\$75,000	\$7,437,500	\$7,437,500	\$14,950,000

NAME OF PROJECT: Mid-Town Beach Nourishment

LOCAL SPONSOR: Town of Palm Beach

LOCAL CONTACT: Robert Weber **PHONE:** (561) 383-5440

PROJECT DESCRIPTION:

The Mid-Town Beach Nourishment project includes 2.8 miles of shoreline between DEP Monuments R89 – R102 in Palm Beach County. Restoration was completed in 1995 between DEP Monuments R95 – R100. The project included construction of 11 groins, which were completed in 1996. In 2003, nourishment was completed in an expanded shoreline length between DEP Monuments R90.4 – R101.4. The project was nourished using FEMA funds in 2006 in response to the FY 2004-05 hurricane seasons and again in FY 2010-11 to repair damage sustained during Tropical Storm Fay. Funding reimbursement is requested for the nourishment event completed in 2015. Staff has previously determined that 81.90 percent of the project is eligible for state cost sharing.

FUNDS WILL BE USED FOR:

Construction (reimbursement).

Federal	State	Local	Total
\$0	\$538,146	\$776,007	\$1,314,153

NAME OF PROJECT: Jupiter Island Beach Nourishment

LOCAL SPONSOR: Town of Jupiter Island

LOCAL CONTACT: John Duchock **PHONE:** (772) 545-0100

PROJECT DESCRIPTION:

The Jupiter Island Beach Nourishment and Blowing Rocks Dune Maintenance project consists of restoration and maintenance of approximately 6.17 miles of shoreline between DEP Monuments R73 – R111 (Town of Jupiter Island) and dune maintenance of approximately 0.2 miles of critically eroded shoreline between DEP Monuments R126 – R127.4 (Blowing Rocks) in Martin County. The last nourishment in the Town (between DEP Monuments R75 – R111) was completed in 2016. Funds are requested for a Joint Coastal Permit to extend the Town’s project to the north to DEP Monuments R73 and to construct a dune project in the Blowing Rocks segment. Staff has determined that 37.14 percent of the project is eligible for state cost sharing.

FUNDS WILL BE USED FOR:

Design and construction.

Federal	State	Local	Total
\$0	\$41,782	\$183,218	\$225,000

NAME OF PROJECT: Anna Maria Island Beach Nourishment (Non-federal)

LOCAL SPONSOR: Manatee County

LOCAL CONTACT: Charles Hunsicker **PHONE:** (941) 745-3727

PROJECT DESCRIPTION:

The Anna Maria Island Beach Nourishment project consists of nourishment of approximately 1 mile of shoreline between DEP Monuments R36 – R41.3 and restoration between DEP Monuments R1 – R10 in Manatee County. Nourishment of the Coquina Segment (DEP Monuments R36 – R41.3) was completed in 2014. Funding is requested for the Coquina Beach Groins Feasibility Study, which is scheduled for completion in FY 2017-18. Staff has determined that 100 percent of the project is eligible for state cost sharing.

FUNDS WILL BE USED FOR:

Feasibility (Coquina Beach groins reimbursement).

Federal	State	Local	Total
\$0	\$75,000	\$75,000	\$150,000

NAME OF PROJECT: South Boca Raton Beach Nourishment

LOCAL SPONSOR: City of Boca Raton

LOCAL CONTACT: Jennifer Bistyga **PHONE:** (561) 416-3397

PROJECT DESCRIPTION:

The South Boca Raton Beach Nourishment project includes approximately 1 mile of shoreline between DEP Monuments R223.3 – R227.9 in Palm Beach County. Restoration was completed in 1985 with nourishments in 1996, 2002 and 2010. The project area also receives bypass material from maintenance dredging of the Boca Raton Inlet conducted annually by the City of Boca Raton's dredge. Nourishment was completed in FY 2013-14. Funding is requested for tasks associated with an interim project that was completed in spring 2017. Staff has determined that 77.29 percent of the project is eligible for state cost sharing.

FUNDS WILL BE USED FOR:

Design, construction (reimbursement) and first year monitoring.

Federal	State	Local	Total
\$0	\$960,066	\$1,523,934	\$2,484,000

NAME OF PROJECT: Key Biscayne Beach Nourishment

LOCAL SPONSOR: Village of Key Biscayne

LOCAL CONTACT: Eric Lang **PHONE:** (305) 365-5514

PROJECT DESCRIPTION:

The Key Biscayne Beach Nourishment project is a 1.3-mile segment between DEP Monuments R101 – R108 in Miami-Dade County. The project was restored as a federally authorized restoration in 1987. In 1990, the project was de-authorized and was subsequently followed by three non-federal nourishments in 2002, 2008 and 2012. The most recent nourishment placed 26,100 cubic yards of material and was completed in May 2017. Reimbursement is requested for the 2017 project, as well as a feasibility study to determine alternatives for long-term beach management. Staff has determined that 97 percent of the project is eligible for state cost sharing.

FUNDS WILL BE USED FOR:

Feasibility, design, construction (reimbursement) and first year monitoring.

Federal	State	Local	Total
\$0	\$911,036	\$967,388	\$1,878,424

NAME OF PROJECT: Hillsboro Beach Nourishment

LOCAL SPONSOR: Town of Hillsboro Beach

LOCAL CONTACT: Mac Serda **PHONE:** (954) 427-4011

PROJECT DESCRIPTION:

The Hillsboro Beach Nourishment project includes 1.2 miles of shoreline between DEP Monuments R6 – R12 in Broward County. The initial restoration project took place in 1972 with the placement of 360,000 cubic yards of offshore sand material between DEP Monuments R7 – R12. Two nourishment projects occurred in 1998 and 2011, both using dredged sand. Truck haul projects in 2008 and 2015 occurred within segments of the design template. This project will place approximately 37,300 cubic yards of truck haul sand material between DEP Monuments R6+750' – R9. Staff has determined that 5 percent of the project is eligible for state cost sharing.

FUNDS WILL BE USED FOR:

Design, construction (nourishment) and first year monitoring.

Federal	State	Local	Total
\$1,302,075	\$15,851	\$618,174	\$1,936,100

NAME OF PROJECT: Vero Beach Feasibility Study

LOCAL SPONSOR: Indian River County

LOCAL CONTACT: James Gray **PHONE:** (772) 226-1344

PROJECT DESCRIPTION:

The Vero Beach Feasibility Study project consists of a non-federal feasibility study, design and restoration of 2.7 miles of critically eroded shoreline between DEP Monuments R70 – R86 in Indian River County. The restoration project is currently in the design phase. Construction is scheduled for FY 2018-19. FEMA has approved funding to repair damage sustained during Hurricane Matthew. The dune repair project will be constructed as a component of the restoration project. Construction is scheduled for FY 2018-19. Staff has determined that 93.3 percent of the project (100 percent for feasibility) is eligible for state cost sharing.

FUNDS WILL BE USED FOR:

Feasibility (reimbursement for the Environmental Impact Statement), design, construction and first year monitoring.

Federal	State	Local	Total
\$938,904	\$1,748,751	\$1,987,345	\$4,675,000

NAME OF PROJECT: South Jupiter Beach Feasibility Study

LOCAL SPONSOR: Palm Beach County

LOCAL CONTACT: Michael Stahl **PHONE:** (561) 233-2433

PROJECT DESCRIPTION:

The South Jupiter Beach Feasibility Study consists of a study to evaluate alternatives for beach restoration along 1.45 miles of critically eroded shoreline between DEP Monuments R19 – R26 in Palm Beach County. In 2016, a dune restoration was conducted to provide storm protection to A1A/Ocean Boulevard. Palm Beach County is conducting a feasibility study to incorporate the Jupiter/Carlin, South Jupiter and Juno Beach projects into a single fill event to reduce project construction costs and increase project performance of all three segments. Staff has determined that the project segment is 100 percent eligible for state cost sharing.

FUNDS WILL BE USED FOR:

Feasibility.

Federal	State	Local	Total
\$0	\$83,293	\$83,292	\$166,585

NAME OF PROJECT: Coral Cove Park Dune Nourishment

LOCAL SPONSOR: Palm Beach County

LOCAL CONTACT: Michael Stahl **PHONE:** (561) 233-2433

PROJECT DESCRIPTION:

The Coral Cove Dune Nourishment project is located between DEP Monuments R1.1 – R7.6 in Palm Beach County. The initial dune restoration was completed in 1993 using sand from an upland sand source. Dune repair and vegetation projects were completed in 2005 and 2013 to address storm impacts. A subsequent nourishment to fill the dune template was completed in 2014. Funding is requested for dune nourishment in 2018. Staff has determined the project is 100 percent eligible for state cost sharing.

FUNDS WILL BE USED FOR:

Construction.

Federal	State	Local	Total
\$0	\$400,000	\$400,000	\$800,000

NAME OF PROJECT: Mexico Beach Feasibility Study

LOCAL SPONSOR: Bay County

LOCAL CONTACT: Robert Majka **PHONE:** (850) 248-8140

PROJECT DESCRIPTION:

In March 2017, the Mexico Beach Community Development Council completed a feasibility study that contained 10 alternatives for addressing beach erosion. The study included a survey, an update of the shoreline conditions and inlet dredging records, and an evaluation of the project alternatives to identify the most cost-effective beach management strategies. The preferred alternative includes a truck haul project to place dredged, stockpiled sand from the Mexico Beach canal on the critically-eroded beach above the mean high water line between DEP Monuments R132 – R137.8. Funding is requested for reimbursement of the feasibility study. Staff has estimated the project is 100 percent eligible for state cost sharing.

FUNDS WILL BE USED FOR:

Feasibility.

Federal	State	Local	Total
\$0	\$30,877	\$30,878	\$61,755

NAME OF PROJECT: Southern Palm Beach Island Restoration

LOCAL SPONSOR: Palm Beach County

LOCAL CONTACT: Michael Stahl **PHONE:** (561) 233-2433

PROJECT DESCRIPTION:

The Southern Palm Beach Island Restoration consists of a feasibility analysis and the design of a beach restoration project along 0.7 miles of critically eroded beach between DEP Monuments R134+75' – R137+375' in Palm Beach County. Dune maintenance projects were conducted in 2007 and 2009. Several beach management alternatives have been explored including beach restoration and the use of erosion control structures. A feasibility study is in progress to evaluate future erosion control alternatives. Funding is requested for reimbursement of the feasibility study and for subsequent design tasks. Staff has determined that 94% of the project (100% for feasibility) is eligible for state cost sharing.

FUNDS WILL BE USED FOR:

Feasibility (Environmental Impact Statement) and design (permitting and pre-construction monitoring).

Federal	State	Local	Total
\$0	\$413,000	\$437,000	\$850,000

NAME OF PROJECT: South Ponte Vedra/Vilano Beach Federal Design

LOCAL SPONSOR: St. Johns County

LOCAL CONTACT: Neal Shinkre **PHONE:** (904) 209-0113

PROJECT DESCRIPTION:

A federal study to determine the feasibility of beach restoration in South Ponte Vedra Beach, Vilano Beach and Summer Haven has recommended a federal beach restoration project along a 3-mile stretch of shoreline in St. Johns County. The recommended location is between DEP Monuments R102 – R117 in South Ponte Vedra and Vilano Beach. The Corps anticipates beginning the design phase during FY 2018-19. Funding is requested for cost sharing on the federal design. Staff has been provided an eligibility determination of 31.95 percent, which is under review.

FUNDS WILL BE USED FOR:

Design.

Federal	State	Local	Total
\$277,000	\$147,975	\$778,025	\$1,203,000

NAME OF PROJECT: Singer Island Shore Protection Project

LOCAL SPONSOR: Palm Beach County

LOCAL CONTACT: Michael Stahl **PHONE:** (561) 233-2433

PROJECT DESCRIPTION:

The Singer Island Shore Protection Project consists of the nourishment and maintenance of 1.3 miles of dunes on Singer Island between DEP Monuments R60.5 – R67 in Palm Beach County. In 2012, Palm Beach County withdrew a permit application for breakwaters as an erosion control alternative due to permitting constraints. In an effort to maintain turtle nesting habitat, the County has conducted three dune nourishments since 2012. Dune nourishment events are planned to continue under Coastal Construction Control Line permitting on a biennial basis through 2026. The most recent project completed in February 2017. Funding is requested for dune nourishment in FY 2018-19. Staff has determined the project is 71.72 percent eligible for state cost sharing.

FUNDS WILL BE USED FOR:

Construction.

Federal	State	Local	Total
\$0	\$537,900	\$962,100	\$1,500,000

NAME OF PROJECT: Volusia County Feasibility Study

LOCAL SPONSOR: Volusia County

LOCAL CONTACT: Jessica Winterwerp **PHONE:** (386) 248-8072

PROJECT DESCRIPTION:

The Volusia County Feasibility Study will develop a countywide beach management feasibility study with erosion assessment for Volusia County. Components of the study will include a brief update of the south county study completed approximately 15 years ago, analysis of Volusia beaches north of Ponce de Leon Inlet, and a comprehensive, countywide beach profile survey. Staff has determined that 100 percent of the project is eligible for state cost sharing.

FUNDS WILL BE USED FOR:

Feasibility.

Federal	State	Local	Total
\$0	\$200,000	\$200,000	\$400,000

NAME OF PROJECT: Regional Monitoring

LOCAL SPONSOR: Florida Department of Environmental Protection

LOCAL CONTACT: Robert Brantly **PHONE:** (850) 245-7577

PROJECT DESCRIPTION:

The Regional Data Collection and Processing Program is designed to address statewide coastal erosion and change analysis, and outlines the minimum data collection efforts necessary to accomplish the program goals. It includes a combination of in-house and contracted work efforts that provide for complete statewide coverage of the program jurisdictional areas on an 8-year cycle. The data collection cycle includes the acquisition and development of:

- Aerial photography;
- Aerial oblique photography for reconnaissance and emergency response;
- Conventional topographic and bathymetric surveys;
- Laser remote sensing technologies including topographic and bathymetric data (LIDAR);
- Computer-based stereo photo modeling; and
- Regional Offshore Sand Source Inventory.

These data are used to support all aspects of the statewide beach management and coastal permitting programs, including the planning and design of beach restoration and nourishment, post-hurricane response and recovery activities, and development of the critically eroded beaches inventory. The collection and analysis of the data is coordinated with other statewide initiatives including the annual aerial digital photo acquisition initiative, Corps Regional Sediment Management efforts and local government project sponsors to increase cost efficiency and avoid duplication of efforts.

FUNDS WILL BE USED FOR:

Monitoring.

Federal	State	Local	Total
\$0	\$250,000	\$0	\$250,000

NAME OF PROJECT: St. Lucie IMP Implementation

LOCAL SPONSOR: Martin County

LOCAL CONTACT: Kathy FitzPatrick **PHONE:** (772) 288-5429

PROJECT DESCRIPTION:

St. Lucie Inlet is a federally authorized inlet located between DEP Monuments R44 – R45 in Martin County. Federally authorized improvements began in 1974 with the construction of the first extension of the north jetty, a small south jetty and a detached breakwater. Construction of the sediment impoundment basin was completed in 2002. Since the construction of the sediment impoundment basin, regular sand bypassing from the sediment impoundment basin has been conducted on a 4-5-year cycle with placement of sand on the beaches of Jupiter Island south of the inlet. Extensive monitoring and modeling efforts were undertaken after the construction of the sediment impoundment basin to more fully understand the impact and functioning of the basin. A revised IMP was adopted in 2016, implementing sand bypassing objectives for the Town of Jupiter Island (161,000 cubic yards per year) and Bath tub Beach-Sailfish Point (34,000 cubic yards per year).

FUNDS WILL BE USED FOR:

Construction (reimbursement for placement of sand dredged from the inlet in Borrow Area B, bypassing to the Town of Jupiter Island and bypass north to Bath tub Beach/Sailfish Point).

Federal	State	Local	Total
\$15,628,500	\$8,058,375	\$2,686,125	\$26,373,000

NAME OF PROJECT: Port Everglades IMP Implementation

LOCAL SPONSOR: Broward County

LOCAL CONTACT: Nicole Sharp **PHONE:** (954) 519-1231

PROJECT DESCRIPTION:

Port Everglades Inlet is a federally maintained navigation channel located between DEP Monuments R85 – R86 in Broward County. DEP adopted the Port Everglades Inlet Management Study Implementation Plan, which established an annualized bypassing objective of 44,000 cubic yards, in May 1999. In 2002, design of a spur groin attached to the south jetty and two groins located on the shore south the inlet (in lieu of breakwaters) was completed as recommended in the adopted IMP. Construction was completed as part of the 2006 Broward County Shore Protection Project - Segment III. Design efforts to remove rock spoil north of the inlet and create a sand trap to initiate a bypassing protocol are ongoing. The remaining balance of funding is requested for construction beginning in FY 2018-19.

FUNDS WILL BE USED FOR:

Construction and first year monitoring.

Federal	State	Local	Total
\$0	\$5,297,687	\$1,765,896	\$7,063,583

NAME OF PROJECT: Pensacola Pass Inlet Management Study

LOCAL SPONSOR: Escambia County

LOCAL CONTACT: Timothy Day **PHONE:** (850) 595-1144

PROJECT DESCRIPTION:

Pensacola Pass is located between DEP Monument R67 – R68 in Escambia County. The project is a federally authorized deepwater navigation channel that connects the Gulf of Mexico to the Gulf Intracoastal Waterway and Pensacola Bay. The maintained channel disrupts the natural drift of sand in and across the tidal inlet between Santa Rosa Island and Perdido Key. Periodic maintenance dredging places some portion of the impounded sand back into the littoral system; however, the trapping of the sand by the navigation channel does alter the adjacent shorelines for several miles in both directions, inducing erosion due to sand starvation in some areas. Funding is requested for the analysis and development of an inlet management study.

FUNDS WILL BE USED FOR:

Feasibility.

Federal	State	Local	Total
\$0	\$311,250	\$103,750	\$415,000

NAME OF PROJECT: East Pass Inlet Management Study

LOCAL SPONSOR: Okaloosa County

LOCAL CONTACT: Jim Trifilio **PHONE:** (850) 651-7131

PROJECT DESCRIPTION:

East Pass is located at DEP Monument R17 in Okaloosa County. DEP adopted an IMP in 2000 and a revised IMP in 2013. One of the implementation strategies of the revised plan is the stabilization of Norriego Point to reduce the future emergency fill requirements, allowing the Corps to place a greater volume of material from channel onto adjacent beaches. The proposed study will investigate the feasibility of designing a sand trap outside the federal navigation channels for additional bypassing.

FUNDS WILL BE USED FOR:

Feasibility.

Federal	State	Local	Total
\$0	\$71,099	\$23,699	\$94,798

NAME OF PROJECT: Wiggins Pass Inlet Management Study

LOCAL SPONSOR: Collier County

LOCAL CONTACT: Gary McAlpin **PHONE:** (239) 252-5342

PROJECT DESCRIPTION:

The Wiggins Pass Inlet Management Study project is located between DEP Monuments R16 – R17 in Collier County. Pursuant to the inlet management study, Wiggins Pass is currently dredged at regular intervals of approximately four years with optional interim dredging events every two years. DEP is finalizing the IMP based on the results of the inlet management study, which will be implemented starting with the 2017 maintenance dredging event. Funding is requested for tasks associated with the 2017 project.

FUNDS WILL BE USED FOR:

Design (reimbursement), construction (reimbursement) and first year monitoring.

Federal	State	Local	Total
\$0	\$1,368,750	\$456,250	\$1,825,000

NAME OF PROJECT: Fort Pierce IMP Implementation

LOCAL SPONSOR: St. Lucie County

LOCAL CONTACT: Richard Bouchard **PHONE:** (772) 462-1710

PROJECT DESCRIPTION:

Fort Pierce Inlet is a federally authorized inlet located between DEP Monuments R33 – R34. The Fort Pierce IMP was adopted in 1997. A draft feasibility study to evaluate sand bypassing alternatives was completed in 2003. A 2009 design study, using additional data and computer modeling, recommended construction of a sand trap inside the inlet. The recommendation was approved by DEP and a Joint Coastal Permit was issued in May 2016, allowing for construction of the sand trap in phases. Funding is requested for the construction of the sand trap.

FUNDS WILL BE USED FOR:

Construction.

Federal	State	Local	Total
\$0	\$679,500	\$226,500	\$906,000

NAME OF PROJECT: Boca Raton IMP Implementation

LOCAL SPONSOR: City of Boca Raton

LOCAL CONTACT: Jennifer Bistyga **PHONE:** (561) 416-3397

PROJECT DESCRIPTION:

Boca Raton Inlet is located at DEP Monument R223 in Palm Beach County. The Boca Raton IMP, which established a bypassing objective of 71,300 cubic yards annually, was adopted in 1997. In 2004, the bypassing objective was revised and increased to 83,000 cubic yards. The weir on the north jetty was extended 50 feet seaward to allow for the creation of a wider beach in conjunction with nourishment north of the inlet in 2004. In 2008, the wooden crib structure of the north jetty was rehabilitated with quarried rock. A City-owned dredge is utilized to bypass sand to a fixed outfall located on the beach south of the inlet. Funding is requested for annual bypassing activities, including permit renewal and sand bypassing.

FUNDS WILL BE USED FOR:

Design (permitting) and construction (bypassing).

Federal	State	Local	Total
\$0	\$116,250	\$38,750	\$155,000

NAME OF PROJECT: Estero Bay Regional Inlet Management Study

LOCAL SPONSOR: Lee County

LOCAL CONTACT: Stephen Boutelle **PHONE:** (239) 533-8128

PROJECT DESCRIPTION:

The primary focus of the Estero Bay Regional Inlet Management Study will be to develop sediment budgets for three inlets within Lee County – Big Carlos Pass, New Pass and Big Hickory Pass – located between DEP Monuments R209 – R227. The study will also evaluate potential strategies for inlet sediment management which will result in balancing the sediment budget between the inlets and adjacent beaches.

FUNDS WILL BE USED FOR:

Feasibility.

Federal	State	Local	Total
\$0	\$158,474	\$52,824	\$211,298