

# FLORIDA DEPARTMENT OF CORRECTIONS

## Florida's Criminal Punishment Code: A Comparative Assessment

September 2017



*Julie L. Jones, Secretary*

*A report to the Florida Legislature detailing Florida's  
Criminal Punishment Code*

Prepared by:  
Florida Department of Corrections  
Bureau of Research and Data Analysis  
501 South Calhoun Street  
Tallahassee, FL 32399-2500







# Florida's Criminal Punishment Code: A Comparative Assessment

## Offenses Committed On or After October 1, 1998

### Executive Summary

In 1997, the Florida Legislature created a new sentencing structure, the Florida Criminal Punishment Code (“Code”). The Code is Florida’s primary sentencing policy. It is unique in that it has features of both structured and unstructured sentencing policies.

From a structured sentencing perspective, the Code provides for a uniform evaluation of relevant factors present at sentencing, such as the offense before the court for sentencing, prior criminal record, victim injury, and others. It also provides for the lowest permissible sentence that the court must impose in any given sentencing event, absent a valid reason for departure.

The Code also contains some characteristics of unstructured sentencing, such as broad judicial discretion and the allowance for the imposition of lengthy terms of incarceration.

The Code is effective for offenses committed on or after October 1, 1998 and is unlike the state’s preceding sentencing guidelines, which provided for narrow ranges of permissible sentences in all non-capital sentencing events.

The intent of this report is to address the requirement set forth in Florida Statute 921.002(4)(a) to analyze sentencing events under the Florida Criminal Punishment Code. Each year, the Department of Corrections is required to report on trends in sentencing practices and sentencing score thresholds, and provide an analysis of the sentencing factors considered by the courts. **In this report, a comparison is made between the Criminal Punishment Code sentences received in FY 2015-2016 and FY 2016-2017.**

Since January 1, 1994, the Florida Department of Corrections has collected over 2.6 million scoresheets on felony offenders sentenced in Florida courts under the state’s Sentencing Guidelines and Criminal Punishment Code. This report describes the 121,163 Criminal Punishment Code scoresheets with sentence dates in FY 2016-2017 received by the Florida Department of Corrections through September 1, 2017, for felony offenses committed on or after October 1, 1998. It also compares 81,358 Criminal Punishment Code scoresheets received by the Florida Department of Corrections through September 1, 2017, for felony offenses committed on or after October 1, 2015 and sentence dates in Fiscal Year 2016-2017 with 74,713 Criminal Punishment Code scoresheets with offense dates on or after October 1, 2014 and sentence dates in Fiscal Year 2015-2016.



# PART I

## INTRODUCTION







Every assessment of points reflects a policy statement regarding the relative severity of a criminal behavior. Each policy is represented on its respective scoresheet, which must be completed for each felony defendant prior to sentencing.

### **The 1983 Sentencing Guidelines**

Due to concerns regarding actual and percent of time served as well as concerns regarding a lack of uniformity in sentencing, the 1983 Florida Sentencing Guidelines were enacted October 1, 1983 and parole eligibility was abolished for almost all offenses committed after that date. These guidelines are currently in effect for all non-capital felony offenses that were committed on or after October 1, 1983 and before January 1, 1994.

The 1983 Sentencing Guideline structure was comprised of nine separate worksheets for specified offense categories such as murder, sexual offenses, drug offenses, etc. All offenses were contained in one of these categories.

Within each worksheet, points were assessed for offenses to be sentenced and prior record offenses based on the number of offenses and each offense's felony degree. Assessments were made for legal status and victim injury. Total scores fell into sentencing ranges or cells, for each worksheet. The least severe cell provided for a non-state prison sanction and the most severe cell provided for 27 years to life in prison. Departure sentences were permissible as long as written reasons were provided.

Several factors eventually eroded the integrity of the "truth in sentencing" aspect of the 1983 sentencing guidelines. Some of these factors included an epidemic of "crack" cocaine-related offense activity, which resulted in an unanticipated impact upon correctional resources, the passage of unfunded mandatory minimum sentence legislation, and significant growth in the population of the State of Florida.

As a result of these and other factors, the percentage of time served and actual time served declined. By 1989, the average percentage of time served was 34 percent. This lack of system integrity was the impetus for the creation of a new sentencing guideline structure.

## **The 1994 Sentencing Guidelines**

The 1994 Sentencing Guidelines were enacted through the passage of the “Safe Streets Act.” These guidelines were created with the recognition that prison resources are finite and that the use of state incarceration should be focused upon offenders who commit serious or violent offenses, or who offend repetitively. The 1994 guidelines repealed the grant of basic gain time, evidencing the legislature’s re-commitment to “truth in sentencing.” These sentencing guidelines are in effect for all non-capital felony offenses committed on or after January 1, 1994 and before October 1, 1995.

The structure of the 1994 Sentencing Guidelines has little similarity to the 1983 structure. The structure created attempted to resolve some of the problems inherent in the preceding structure, such as the nine separate worksheets, the lack of offense-specific detail and the issue of grouping crimes by category. The structure of the 1994 guidelines:

- Ranks all non-capital felonies in one of 10 offense severity levels. Level 1 is the least severe ranking and 10 reflects the most serious felonies.
- Each of the rankings has an associated point value in each of three elements subject to scoring: primary offense, additional offense(s), and prior record. Point values escalate as the rank increases. Every offense scored is provided its corresponding point value in these areas, with the emphasis of points lying in the area of the primary offense.
- Includes other policy levels through an assessment of points for a variety of other factors such as: victim injury, legal status, supervision violations, and others.

Under the 1994 structure, the total guidelines score determines the sanction and a range of length of sanction when state prison is applicable. There are basically three categories of sanction based upon total scores. There are ranges of score which:

1. Mandate a non-state prison sanction when the total score is 40 points or less.

2. Provide for discretionary prison or non-state prison sanction when the total score is greater than forty and less than 52 points.
3. Mandate a state prison sanction when the total score exceeds 52 points.

The length of prison is determined by subtracting 28 from the total sentence points to derive the total prison months.

The court has the discretion to increase or decrease the sanction by 25%. This provided for a relatively narrow range for the imposition of a guideline sentence.

### **The 1995 Sentencing Guidelines**

The 1994 Sentencing Guidelines were significantly amended in 1995 through the passage of the Crime Control Act of 1995. The basic structure of the 1994 sentencing guidelines remained; however, point values were increased in a variety of areas and additional policy levers were created to provide for greater sanctions. The 1995 guidelines are in effect for offenses committed on or after October 1, 1995 through September 30, 1998.

The Hegg's ruling stated that the use of the 1995 Sentencing Guidelines for offenses between October 1, 1995 and May 24, 1997 is unconstitutional. However, the 1995 Sentencing Guidelines are used for offense dates between May 25, 1997 and September 30, 1998.

The guidelines were slightly modified in both 1996 and 1997, again providing for increased sanctions and sanction length in certain instances.

### **The Criminal Punishment Code**

The Criminal Punishment Code became effective for offenses committed on or after October 1, 1998. The guidelines are repealed for all offenses committed on or after October 1, 1998 but remain in effect for offenses committed prior to this date. The Code contains features of both structured and unstructured sentencing policies. It maintains many of the goals of guidelines sentencing. Compared to the guidelines however, the Code allows for greater upward discretion in sentencing, provides for increased penalties, and lowers mandatory prison thresholds.

- The Code significantly alters the sentencing policy in a variety of respects. One of the most notable changes is the significant broadening of upward discretion in the sentencing policy. Under the sentencing guidelines, the upward discretion was 25 percent above the state prison months determined by the calculation. Under the Code, the maximum sentence for any felony offense is determined by the statutory maximums as provided in Florida Statute (F.S.) 775.082.

<u>Felony Degree</u>	<u>Years in Prison</u>
Life Felony	Up to Life
1 <sup>st</sup>	Up to 30
2 <sup>nd</sup>	Up to 15
3 <sup>rd</sup>	Up to 5

- This has two effects that are divergent from the preceding guidelines. First, all felony offenders have the potential to receive a prison sentence, whereas many under the guidelines were by policy excluded from such a possibility. Second, the maximums of F. S. 775.082 usually will provide for far greater sentence lengths than were permissible under the guidelines.
- Another significant change is the determination when a prison sentence becomes mandatory under the new sentencing policy. The basic structure of the sentencing policy has not changed with respect to point determinations. Sentencing point thresholds for sentence calculations have, however, undergone significant revisions.
  1. If total points are equal to or less than 44, the lowest permissible sentence is a non-state prison sanction. (However, state prison up to the statutory maximum can be imposed.)
  2. If total points exceed 44, the minimum sentence is established by taking the total point value subtracting 28 and decreasing the remaining value by 25%. This end result value is the lowest permissible prison sentence in months.

This means that only those offenders scoring 44 or fewer points may receive a non-state prison sanction under the code. All others must receive a state prison sanction, absent downward departure from this structure. The threshold under the guidelines for mandatory prison incarceration was 52 points.

## **Department of Corrections Responsibilities**

The department was provided a variety of responsibilities regarding the sentencing policy with respect to the 1994 and subsequent versions of the law. Florida Statute 921 requires the department to:

- Develop the scoresheet and any revisions of the scoresheet for approval by the Supreme Court and supply Sentencing Guidelines and Criminal Punishment Code scoresheets to the appropriate criminal justice entities in the state;
- Prior to July 1, 2001, the Department had a coequal responsibility to prepare scoresheets with the state attorneys. However, the Department of Corrections continued to complete scoresheets which had been ordered by the courts prior to July 1, 2001. In addition there were transitional issues involved in transferring this responsibility to the state attorneys. This resulted in 9.7% of scoresheets received during FY 2001-02 having been prepared by the Department of Corrections;
- Assist the Criminal Justice Estimating Conference in estimating correctional impact of proposed changes to the code;
- Provide the Legislature by October 1 of each year a report detailing the rate of compliance of each Judicial Circuit in providing scoresheets to the department; and,
- Provide the Legislature an annual report detailing trends in sentencing and an analysis thereof by October 1 of each year.

### **The SAGES (Sentencing Analysis and Guidelines Entry Systems) database**

The department developed a database in 1994 to be used as a mechanism to allow for the storage of completed scoresheets and allow for more accurate, legible and efficient scoresheet preparation.

**This report is derived primarily from the information on sentencing scoresheets received by the department from the clerks of the courts and entered into SAGES.**

The following should be considered when evaluating this and other information derived from this database:

- The information is compiled from a database containing sentencing scoresheets received by the Department of Corrections for offenses with dates of commission on or after January 1, 1994. The information is based on the scoresheets in the database with dates of sentence in Fiscal Year 2016-2017 and offenses on or after October 1, 1998, entered as of September 1, 2017.
- Because the rate of scoresheet submissions is never 100%, there is always information missing that could potentially affect the analysis. When this report was run, the statewide compliance rate was 91.0% for Fiscal Year 2016-2017.
- Though the Department retrieves and includes in the database omitted information from a scoresheet that is critical, no effort is made to correct preparation error or errors recorded on scoresheets regarding the sentence imposed. The department does not have the authority to amend an official court document. Conversely, there is a responsibility to record the information as received.

## **Introductory Statistics**

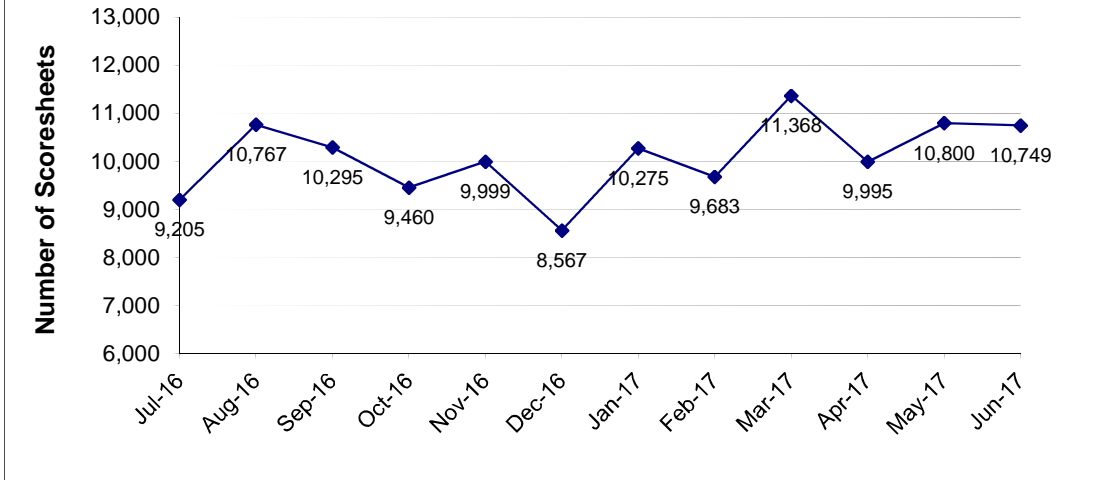
***FACT:*** *There were 121,163 Punishment Code scoresheets with offense dates on or after October 1, 1998 with sentencing dates during FY 2016-17 entered into the sentencing scoresheet database, as of September 1, 2017.*

### **FINDINGS:**

- The number of Code scoresheets received by month of sentence fluctuated from a high of 11,368 to a low of 8,567 from July 1, 2016 to June 30, 2017 (Figure 1).
- For the time period July 2016 through June 2017, Code scoresheets represent ninety-nine point nine percent (99.9%) of the total scoresheet submissions. Throughout the fiscal year, more than ninety-nine percent of the scoresheets represented sentencing events under the Florida Criminal Punishment Code (Table 2).
- About a quarter (21.8%) of the offenders sentenced under the Code were considered “youthful offenders” at the time of sentencing (Table 3). Of the 1,949 true juveniles (under 18 at the time of their offense) transferred to adult court under the Code, 771 (39.6%) of the offenders were age sixteen or younger (Table 4).
- There were 868 juveniles sentenced under the Code for violent offenses, including murder/manslaughter, sex offenses, robbery, and other violent personal offenses. These violent offenses represent 44.5% of all offenses of juveniles (Table 4). Of the 868 violent juvenile offenders, 534 (61.5%) received a state prison sanction (Table 5).
- The gender and race distributions of offenders sentenced under the Code are similar to previous years sentencing events. Almost eighty percent (77.1%) of all scoresheets were for male offenders (Table 6), and 63.1% were for white offenders (Table 7).



**Figure 1  
 Scoresheets Received by Month of Sentence  
 Criminal Punishment Code**



**Table 1  
 Scoresheets Received by Circuit  
 Fiscal Year 2016-2017  
 Criminal Punishment Code**

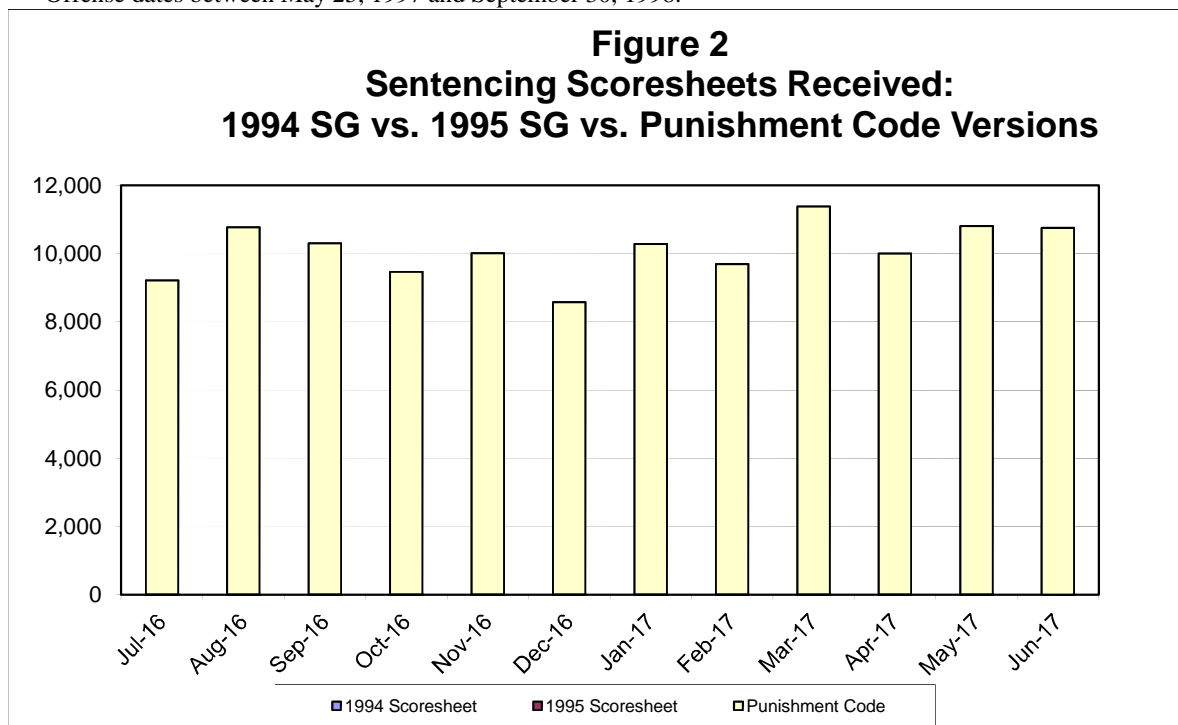
Circuit of Sentence	Total	
	Number	Percent
01 (Pensacola)	7,671	6.3%
02 (Tallahassee)	3,733	3.1%
03 (Lake City)	2,560	2.1%
04 (Jacksonville)	5,873	4.8%
05 (Tavares)	8,710	7.2%
06 (Clearwater)	10,488	8.7%
07 (Daytona Beach)	6,182	5.1%
08 (Gainesville)	3,461	2.9%
09 (Orlando)	11,303	9.3%
10 (Bartow)	6,307	5.2%
11 (Miami)	6,308	5.2%
12 (Sarasota)	5,380	4.4%
13 (Tampa)	8,000	6.6%
14 (Panama City)	4,505	3.7%
15 (West Palm Beach)	5,130	4.2%
16 (Key West)	946	0.8%
17 (Ft. Lauderdale)	7,148	5.9%
18 (Sanford)	6,683	5.5%
19 (Ft. Pierce)	4,178	3.4%
20 (Ft. Myers)	6,597	5.4%
<b>Total</b>	<b>121,163</b>	<b>100.0%</b>

**Table 2**  
**Sentencing Scoresheets Received by Month of Sentence\***  
**Fiscal Year 2016-2017**

Month of Sentence	1994 Sentencing Guidelines Scoresheet		1995 Sentencing Guidelines Scoresheet**		Criminal Punishment Code Scoresheet		Total	
July 2016	4	0.0%	6	0.1%	9,205	99.9%	9,215	7.6%
August 2016	2	0.0%	7	0.1%	10,767	99.9%	10,776	8.9%
September 2016	3	0.0%	8	0.1%	10,295	99.9%	10,306	8.5%
October 2016	3	0.0%	7	0.1%	9,460	99.9%	9,470	7.8%
November 2016	1	0.0%	9	0.1%	9,999	99.9%	10,009	8.3%
December 2016	3	0.0%	4	0.0%	8,567	99.9%	8,574	7.1%
January 2017	3	0.0%	3	0.0%	10,275	99.9%	10,281	8.5%
February 2017	1	0.0%	10	0.1%	9,683	99.9%	9,694	8.0%
March 2017	5	0.0%	7	0.1%	11,368	99.9%	11,380	9.4%
April 2017	3	0.0%	9	0.1%	9,995	99.9%	10,007	8.3%
May 2017	3	0.0%	5	0.0%	10,800	99.9%	10,808	8.9%
June 2017		0.0%	4	0.0%	10,749	100.0%	10,753	8.9%
<b>Total</b>	<b>31</b>	<b>0.0%</b>	<b>79</b>	<b>0.1%</b>	<b>121,163</b>	<b>99.9%</b>	<b>121,273</b>	<b>100.0%</b>

\* Total number of scoresheets, including those with offense dates between October 1, 1995 and May 24, 1997.

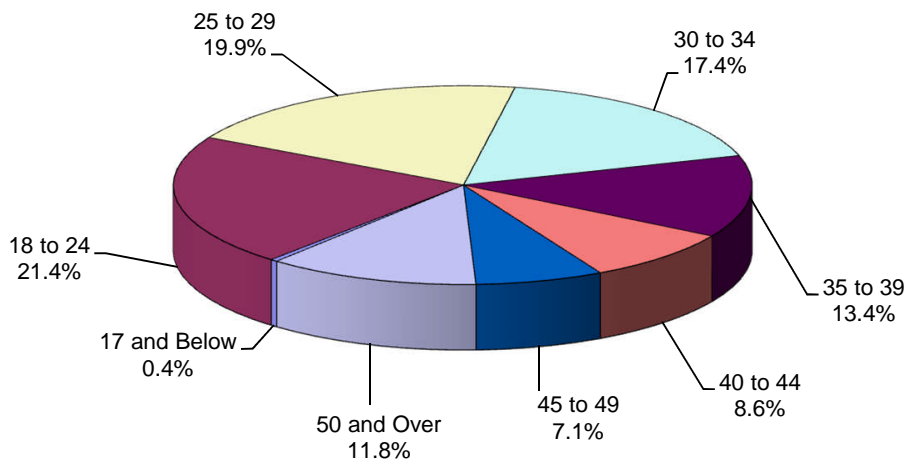
\*\* Offense dates between May 25, 1997 and September 30, 1998.



**Table 3**  
**Age at Sentencing**  
**Criminal Punishment Code**  
**Fiscal Year 2016-2017**

Age	Number	Percent
17 and Below	474	0.4%
18 to 24	25,976	21.4%
25 to 29	24,114	19.9%
30 to 34	21,030	17.4%
35 to 39	16,195	13.4%
40 to 44	10,460	8.6%
45 to 49	8,624	7.1%
50 and Over	14,283	11.8%
Unknown	7	
<b>Total</b>	<b>121,163</b>	<b>100.0%</b>

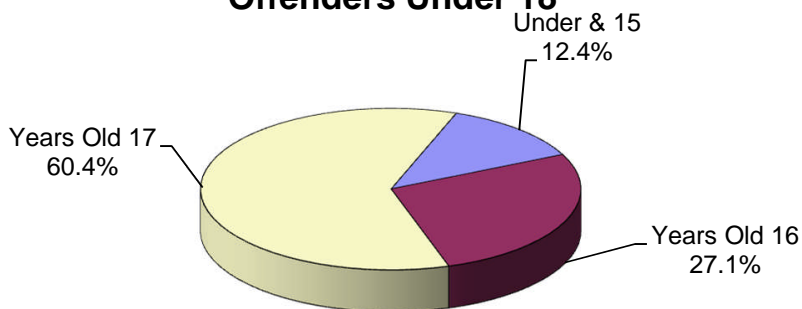
**Figure 3**  
**Age at Sentencing Distribution**  
**Criminal Punishment Code**



**Table 4**  
**Age at Offense for Offenders Under 18**  
**Criminal Punishment Code**  
**Fiscal Year 2016-2017**

Primary Offense	15 & Under	16 Years Old	17 Years Old	Total
Murder/Manslaughter	20 8.3%	33 6.2%	41 3.5%	<b>94</b> <b>4.8%</b>
Sexual Offenses	19 7.9%	21 4.0%	43 3.7%	<b>83</b> <b>4.3%</b>
Robbery	60 24.8%	131 24.8%	199 16.9%	<b>390</b> <b>20.0%</b>
Violent Personal Offenses	52 21.5%	86 16.3%	163 13.8%	<b>301</b> <b>15.4%</b>
Burglary	58 24.0%	170 32.1%	430 36.5%	<b>658</b> <b>33.8%</b>
Theft, Forgery, Fraud	10 4.1%	31 5.9%	118 10.0%	<b>159</b> <b>8.2%</b>
Drugs	2 0.8%	6 1.1%	65 5.5%	<b>73</b> <b>3.7%</b>
Weapons	10 4.1%	38 7.2%	91 7.7%	<b>139</b> <b>7.1%</b>
Other Offenses	11 4.5%	13 2.5%	28 2.4%	<b>52</b> <b>2.7%</b>
<b>Total</b>	<b>242</b> <b>100.0%</b>	<b>529</b> <b>100.0%</b>	<b>1,178</b> <b>100.0%</b>	<b>1,949</b> <b>100.0%</b>

**Figure 4**  
**Age at Offense Distribution**  
**Offenders Under 18**

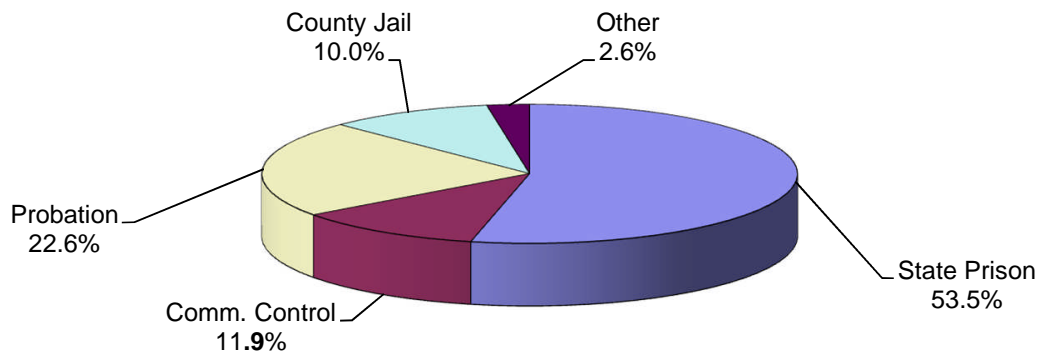


**Table 5**  
**Sanction Imposed by Primary Offense For All 11 - 17 Year Olds**  
**Criminal Punishment Code**  
**Fiscal Year 2016-2017**

Primary Offense	State Prison	Comm. Control	Probation	County Jail	Other	Total
Murder/Manslaughter	78 7.5%	11 5.0%	5 1.1%	0 0.0%	0 0.0%	<b>94</b> <b>4.8%</b>
Sexual Offenses	56 5.4%	4 1.8%	13 3.0%	7 3.6%	3 6.0%	<b>83</b> <b>4.3%</b>
Robbery	250 24.0%	44 19.8%	58 13.2%	29 14.9%	9 18.0%	<b>390</b> <b>20.0%</b>
Violent Personal Offenses	150 14.4%	40 18.0%	78 17.7%	23 11.9%	10 20.0%	<b>301</b> <b>15.4%</b>
Burglary	365 35.0%	79 35.6%	139 31.6%	55 28.4%	20 40.0%	<b>658</b> <b>33.8%</b>
Theft, Forgery, Fraud	55 5.3%	15 6.8%	54 12.3%	33 17.0%	2 4.0%	<b>159</b> <b>8.2%</b>
Drugs	8 0.8%	5 2.3%	33 7.5%	26 13.4%	1 2.0%	<b>73</b> <b>3.7%</b>
Weapons	53 5.1%	19 8.6%	50 11.4%	14 7.2%	3 6.0%	<b>139</b> <b>7.1%</b>
Other Offenses	28 2.7%	5 2.3%	10 2.3%	7 3.6%	2 4.0%	<b>52</b> <b>2.7%</b>
<b>Total</b>	<b>1,043</b> <b>100.0%</b>	<b>222</b> <b>100.0%</b>	<b>440</b> <b>100.0%</b>	<b>194</b> <b>100.0%</b>	<b>50</b> <b>100.0%</b>	<b>1,949</b> <b>100.0%</b>

Note: County Jail includes those sentenced to time served; prison includes those sentenced to life.

**Figure 5**  
**Sanction Imposed Distribution**  
**Offenders Under 18**



**Table 6**  
**Gender by Judicial Circuit**  
**Criminal Punishment Code**  
**Fiscal Year 2016-2017**

Judicial Circuit	Gender				Total	
	Male		Female			
01 (Pensacola)	5,705	4.7%	1,966	1.6%	7,671	6.3%
02 (Tallahassee)	2,954	2.4%	779	0.6%	3,733	3.1%
03 (Lake City)	1,921	1.6%	639	0.5%	2,560	2.1%
04 (Jacksonville)	4,588	3.8%	1,285	1.1%	5,873	4.8%
05 (Tavares)	6,530	5.4%	2,180	1.8%	8,710	7.2%
06 (Clearwater)	7,709	6.4%	2,779	2.3%	10,488	8.7%
07 (Daytona Beach)	4,643	3.8%	1,539	1.3%	6,182	5.1%
08 (Gainesville)	2,676	2.2%	785	0.6%	3,461	2.9%
09 (Orlando)	9,174	7.6%	2,129	1.8%	11,303	9.3%
10 (Bartow)	4,723	3.9%	1,584	1.3%	6,307	5.2%
11 (Miami)	5,433	4.5%	875	0.7%	6,308	5.2%
12 (Sarasota)	3,986	3.3%	1,394	1.2%	5,380	4.4%
13 (Tampa)	6,384	5.3%	1,616	1.3%	8,000	6.6%
14 (Panama City)	3,268	2.7%	1,237	1.0%	4,505	3.7%
15 (West Palm Beach)	4,195	3.5%	935	0.8%	5,130	4.2%
16 (Key West)	768	0.6%	178	0.1%	946	0.8%
17 (Ft. Lauderdale)	5,760	4.8%	1,388	1.1%	7,148	5.9%
18 (Sanford)	4,971	4.1%	1,712	1.4%	6,683	5.5%
19 (Ft. Pierce)	3,137	2.6%	1,041	0.9%	4,178	3.4%
20 (Ft. Myers)	4,947	4.1%	1,650	1.4%	6,597	5.4%
<b>Total</b>	<b>93,472</b>	<b>77.1%</b>	<b>27,691</b>	<b>22.9%</b>	<b>121,163</b>	<b>100.0%</b>

**Table 7**  
**Race by Judicial Circuit**  
**Criminal Punishment Code**  
**Fiscal Year 2016-2017**

Judicial Circuit	Race						Total	
	Black		White		Other*			
01 (Pensacola)	2,501	2.1%	5,111	4.2%	59	0.0%	7,671	6.3%
02 (Tallahassee)	2,295	1.9%	1,396	1.2%	42	0.0%	3,733	3.1%
03 (Lake City)	828	0.7%	1,678	1.4%	54	0.0%	2,560	2.1%
04 (Jacksonville)	2,968	2.4%	2,803	2.3%	102	0.1%	5,873	4.8%
05 (Tavares)	1,872	1.5%	6,570	5.4%	268	0.2%	8,710	7.2%
06 (Clearwater)	2,582	2.1%	7,574	6.3%	332	0.3%	10,488	8.7%
07 (Daytona Beach)	1,686	1.4%	4,382	3.6%	114	0.1%	6,182	5.1%
08 (Gainesville)	1,504	1.2%	1,895	1.6%	62	0.1%	3,461	2.9%
09 (Orlando)	4,410	3.6%	6,838	5.6%	55	0.0%	11,303	9.3%
10 (Bartow)	1,904	1.6%	4,331	3.6%	72	0.1%	6,307	5.2%
11 (Miami)	3,011	2.5%	3,280	2.7%	17	0.0%	6,308	5.2%
12 (Sarasota)	1,359	1.1%	3,873	3.2%	148	0.1%	5,380	4.4%
13 (Tampa)	3,359	2.8%	4,479	3.7%	162	0.1%	8,000	6.6%
14 (Panama City)	1,005	0.8%	3,472	2.9%	28	0.0%	4,505	3.7%
15 (W. Palm Beach)	2,304	1.9%	2,822	2.3%	4	0.0%	5,130	4.2%
16 (Key West)	199	0.2%	700	0.6%	47	0.0%	946	0.8%
17 (Ft. Lauderdale)	3,784	3.1%	3,244	2.7%	120	0.1%	7,148	5.9%
18 (Sanford)	2,033	1.7%	4,453	3.7%	197	0.2%	6,683	5.5%
19 (Ft. Pierce)	1,394	1.2%	2,503	2.1%	281	0.2%	4,178	3.4%
20 (Ft. Myers)	1,578	1.3%	4,995	4.1%	24	0.0%	6,597	5.4%
<b>Total</b>	<b>42,576</b>	<b>35.1%</b>	<b>76,399</b>	<b>63.1%</b>	<b>2,188</b>	<b>1.8%</b>	<b>121,163</b>	<b>100.0%</b>

\*Other includes Asian, Native American, and other categories.





PART II

OFFENSE TO SENTENCE DATE  
LAG TIME COMPARISON



## **Offense to Sentence Date Lag Time Comparison**

***FACT:*** *Scoresheets that have been received by the Department of Corrections for offenders sentenced under the Florida Criminal Punishment Code are not representative of the true impact of sentencing events under the Code.*

### **FINDINGS:**

- There were 81,358 scoresheets submitted to the Department of Corrections with sentence dates in FY 2016-2017 and offense dates on or after October 1, 2015. The number of scoresheets submitted to the Department of Corrections with sentence dates in FY 2015-2016 and offense dates on or after October 1, 2014 was 74,709.
- **Lag Time** - The average length of time that passes from the date an offender commits a crime to the date the offender is sentenced for that crime is 6.4 months for sentencing events in FY 2016-2017 (Table 1).
- More serious and violent crimes typically have much longer lag time than the less serious property or drug crimes. A data file that is constrained by the date of offense must allow for enough time for the serious and violent crimes to be processed and convicted in order to represent a true distribution of sentencing events. The Florida Criminal Punishment Code went into effect for offenses committed on or after October 1, 1998. As of September 1, 2017, the Department of Corrections had received almost 2.6 million Code scoresheets. However, because of the long lag time for serious offenses, the information to date is skewed more heavily by the less serious offenses.
- The average lag time for FY 2015-2016 sentencing events is 6.4 months. When the lag times are examined by offense severity level and type of primary offense, the average lag time for level 10 offenses (most serious) was 10.1 months for sentencing events during FY 2015-2016. In FY 2016-2017, the average lag time for level 10 offenses was 10.5 months. Also, for murder/manslaughter, the average lag time from offense to sentence is 10.5 months for sentencing dates in FY 2015-2016 and 10.7 months for FY 2016-2017 (Table 2).

- The more violent, serious offenses represented 18.2% of the scoresheets in FY 2015-2016 and 18.0% in FY 2016-2017 (Figure 1).
- Property offenses comprised the largest group of scoresheets received in FY 2015-2016 (34.9%) and FY 2016-2017 (34.1%) (Table 3).

**Table 1**  
**Comparison of Average Time from Offense Date to Sentence Date**  
**by Offense Severity Level of Primary Offense, in Months**

<b>Offense Severity Level</b>	<b>FY2015-2016 Sentence Dates<sup>1</sup></b>	<b>FY2016-2017 Sentence Dates<sup>2</sup></b>
1	5.5	5.7
2	6.3	6.4
3	5.8	5.8
4	6.3	6.3
5	6.9	6.9
6	7.0	7.1
7	7.8	7.9
8	8.6	8.8
9	9.6	9.6
10	10.1	10.5
<b>Overall Average</b>	<b>6.4</b>	<b>6.4</b>

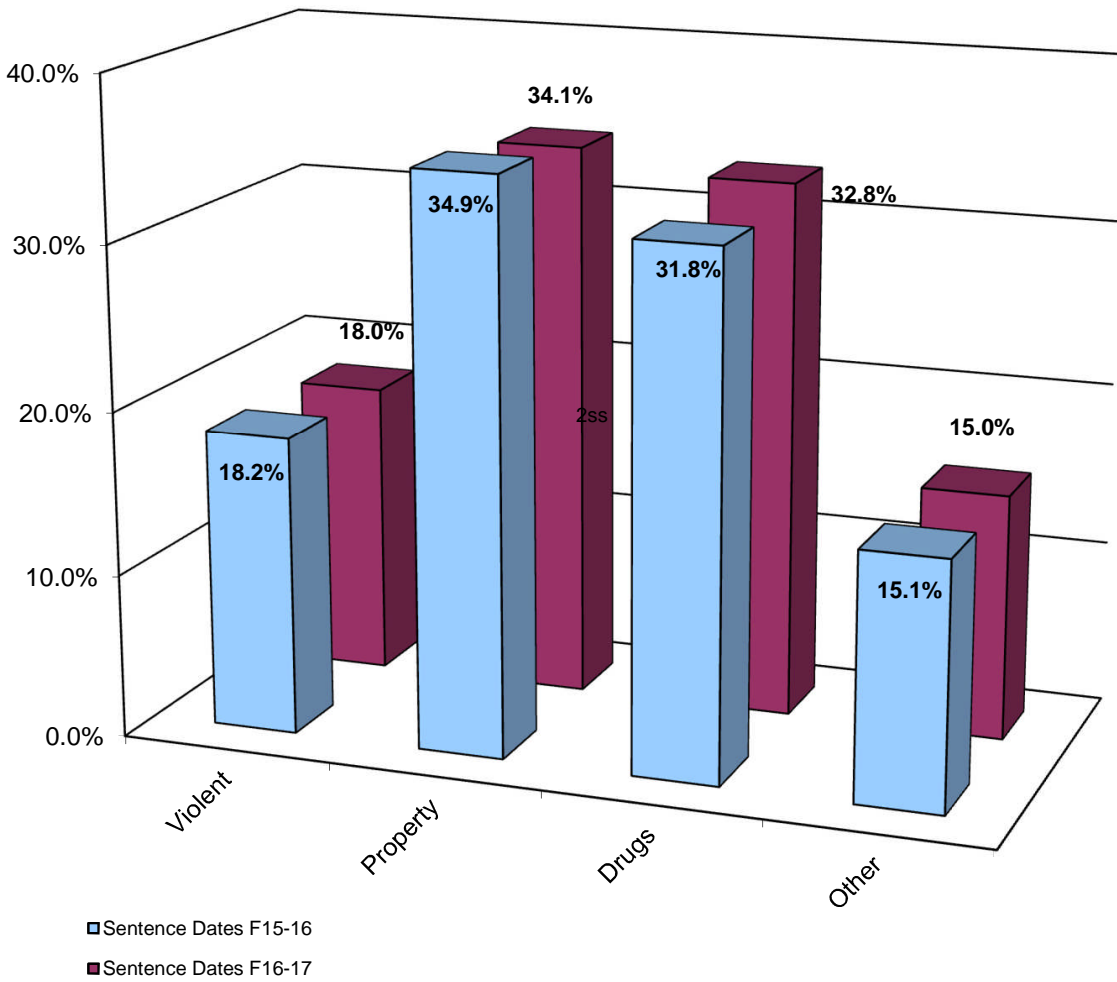
**Table 2**  
**Comparison of Average "Lag" Time from Offense Date to Sentence**  
**Date by Primary Offense, in Months**

<b>Primary Offense</b>	<b>FY2015-2016 Sentence Dates<sup>1</sup></b>	<b>FY2016-2017 Sentence Dates<sup>2</sup></b>
Murder/Manslaughter	10.5	10.7
Sexual/Lewd Behavior	9.2	9.3
Robbery	7.9	8.0
Violent, Other	6.6	6.7
Burglary	6.8	6.8
Property Theft/Fraud/Damage	6.3	6.5
Drugs	6.1	6.1
Weapons	6.7	6.7
Other	6.0	6.1
<b>Overall Average</b>	<b>6.4</b>	<b>6.4</b>

<sup>1</sup> Offense dates on or after October 1, 2014.

<sup>2</sup> Offense dates on or after October 1, 2015.

**Figure 1**  
**Distribution of Offense Group**  
**Sentence Dates in FY2015-2016 vs. FY2016-2017**



**Table 3**  
**Distribution of Offense**  
**Sentence Dates in FY2015-2016 vs. FY2016-2017**

Primary Offense	FY2015-2016 Sentence Dates <sup>1</sup>	FY2016-2017 Sentence Dates <sup>2</sup>
Murder/Manslaughter	228 0.3%	228 0.3%
Sexual Offenses	703 0.9%	700 0.9%
Robbery	1,689 2.3%	1,706 2.1%
Violent Personal Offenses	10,744 14.4%	11,719 14.4%
Burglary	7,282 9.7%	8,081 9.9%
Theft/Forgery/Fraud	19,062 25.5%	19,907 24.5%
Drugs	23,743 31.8%	26,706 32.8%
Weapons	2,864 3.8%	3,416 4.2%
Other	8,398 11.2%	8,895 10.9%
<b>Total</b>	<b>74,713</b> <b>100.0%</b>	<b>81,358</b> <b>100.0%</b>

<sup>1</sup> Offense dates on or after October 1, 2014.

<sup>2</sup> Offense dates on or after October 1, 2015.

**Table 4  
Distribution of Offense**

<b>Primary Offense</b>	<b>FY2015-2016 Sentence Dates<sup>1</sup></b>		<b>FY2016-2017 Sentence Dates<sup>2</sup></b>	
<b>Murder/Manslaughter</b>	<b>228</b>	<b>0.3%</b>	<b>228</b>	<b>0.3%</b>
1st Degree Murder	50	0.1%	46	0.1%
2nd Degree Murder	86	0.1%	103	0.1%
3rd Degree Murder	6	0.0%	4	0.0%
Homicide, Other	5	0.0%	2	0.0%
Manslaughter	53	0.1%	38	0.0%
DUI Manslaughter	28	0.0%	35	0.0%
<b>Sexual Offenses</b>	<b>703</b>	<b>0.9%</b>	<b>700</b>	<b>0.9%</b>
Capital Sexual Battery	23	0.0%	20	0.0%
Life Sexual Battery	21	0.0%	31	0.0%
1st Degree Sexual Battery	52	0.1%	65	0.1%
2nd Degree Sexual Battery	146	0.2%	155	0.2%
Sexual Assault, Other	4	0.0%	5	0.0%
Lewd/Lascivious Behavior	457	0.6%	424	0.5%
<b>Robbery</b>	<b>1,689</b>	<b>2.3%</b>	<b>1,706</b>	<b>2.1%</b>
Robbery with Weapon	653	0.9%	664	0.8%
Robbery without Weapon	975	1.3%	989	1.2%
Home Invasion, Robbery	61	0.1%	53	0.1%
<b>Violent Personal Offenses</b>	<b>10,744</b>	<b>14.4%</b>	<b>11,719</b>	<b>14.4%</b>
Home Invasion, Other	0	0.0%	2	0.0%
Carjacking	91	0.1%	108	0.1%
Aggravated Assault	1,547	2.1%	1,699	2.1%
Aggravated Battery	1,061	1.4%	1,186	1.5%
Assault/Battery on L.E.O.	1,221	1.6%	1,328	1.6%
Assault/Battery, Other	1,224	1.6%	1,366	1.7%
Aggravated Stalking	158	0.2%	185	0.2%
Resisting Arrest with Violence	1,226	1.6%	1,382	1.7%
Kidnapping	329	0.4%	369	0.5%
Arson	147	0.2%	138	0.2%
Abuse of Children	1,044	1.4%	1,118	1.4%
Violent, Other	2,288	3.1%	2,373	2.9%
Leaving Accident, Injury/Death	355	0.5%	396	0.5%
DUI, Injury	53	0.1%	69	0.1%



**Table 4  
Distribution of Offense**

Primary Offense	FY2015-2016 Sentence Dates <sup>1</sup>		FY2016-2017 Sentence Dates <sup>2</sup>	
<b>Burglary</b>	<b>7,282</b>	<b>9.7%</b>	<b>8,081</b>	<b>9.9%</b>
Burglary, Structure	3,732	5.0%	4,381	5.4%
Burglary, Dwelling	2,502	3.3%	2,568	3.2%
Burglary, Armed	285	0.4%	324	0.4%
Burglary with Assault	226	0.3%	214	0.3%
Burglary/Trespass, Other	537	0.7%	594	0.7%
<b>Theft/Forgery/Fraud</b>	<b>19,062</b>	<b>25.5%</b>	<b>19,907</b>	<b>24.5%</b>
Grand Theft, Other	7,053	9.4%	7,483	9.2%
Grand Theft, Automobile	1,510	2.0%	1,780	2.2%
Stolen Property	3,118	4.2%	3,088	3.8%
Forgery/Counterfeiting	2,050	2.7%	2,146	2.6%
Worthless Checks	79	0.1%	89	0.1%
Fraudulent Practices	1,907	2.6%	2,064	2.5%
Theft/Property Damage, Other	3,345	4.5%	3,257	4.0%
<b>Drugs</b>	<b>23,743</b>	<b>31.8%</b>	<b>26,706</b>	<b>32.8%</b>
Drugs, Manufacture/Sale/Purchase	5,788	7.7%	5,798	7.1%
Drugs, Trafficking	771	1.0%	834	1.0%
Drugs, Possession/Other	17,184	23.0%	20,074	24.7%
<b>Weapons</b>	<b>2,864</b>	<b>3.8%</b>	<b>3,416</b>	<b>4.2%</b>
Weapons, Discharging	200	0.3%	235	0.3%
Weapons, Possession	2,658	3.6%	3,178	3.9%
Weapons, Other	6	0.0%	3	0.0%
<b>Other</b>	<b>8,398</b>	<b>11.2%</b>	<b>8,895</b>	<b>10.9%</b>
Escape	1,774	2.4%	1,918	2.4%
DUI, No Injury	489	0.7%	552	0.7%
Traffic, Other	3,504	4.7%	3,631	4.5%
Racketeering	28	0.0%	28	0.0%
Pollution/Hazardous Materials	23	0.0%	16	0.0%
Criminal Justice System	2,168	2.9%	2,376	2.9%
Other	412	0.6%	374	0.5%
<b>Total</b>	<b>74,713</b>	<b>100.0%</b>	<b>81,358</b>	<b>100.0%</b>

<sup>1</sup> Offense dates on or after October 1, 2014.

<sup>2</sup> Offense dates on or after October 1, 2015.



**PART III**

**COMPARATIVE DESCRIPTION**



## **Comparative Description**

**NOTES:** This section examines the sentencing parameters point values, as follows:

- The Criminal Punishment Code allows for a non-state prison sanction for offenders scoring 44.0 or fewer total points.
- The Code mandates state prison as the sanction, unless the sentence is mitigated, for all those offenders whose total points exceed 44.0.

This means that only those offenders scoring 44 or fewer points may receive a non-state prison sanction under the Code. All others must receive a state prison sanction, absent downward departure from this structure.

Florida Statute 921.0026 allows for circumstances or factors that reasonably justify the downward departure of Guidelines/Code scoresheet.

In addition, on January 24, 2002 the Supreme Court of Florida ruled in *Jones v. State* that Section 948.01(3) F.S. (supp. 1998), which allows for the sanction of drug offender probation in the case of a chronic substance abuser, provides an alternative sentencing scheme for drug offenders that is outside the Code. It was ruled that the Trial Court had the discretion to sentence the defendant to drug offender probation even though the Code mandated prison time.

Actual sanctions imposed, including state prison, community control, probation, county jail/time served, and other sanctions are presented and compared to the categories listed above.

## **FINDINGS:**

- Across the state, 20.6% of offenders were sentenced to state prison as the most severe sanction in FY 2016-2017. An additional 26.0% were sentenced to incarceration in county jail, or to time already served in jail. Five percent (5.1%) were sentenced to community control, and almost half to probation (47.6%), including drug offender probation and regular probation. Less than one percent (0.8%) of offenders were sentenced to “other” sanctions. For sentencing dates in FY 2015-2016, 21.9% of offenders were sentenced to state prison and 25.0% were sentenced to county jail or time served. Less than six percent (5.1%) were sentenced to community control, and 47.4% to probation. Less than one percent (0.5%) of the offenders were sentenced to “other” sanctions (Table 1).

- Almost three-quarters of the 81,358 Code scoresheets with sentence dates in FY 2016-2017 examined (58,744 scoresheets or 72.2%) scored 44 points or fewer (Table 1). These scoresheets represent sentencing events where the judge has the discretion to sentence the offender to either a non-state prison sanction or a state prison sanction. If the judge chose to sentence the offender to state prison, the judge had the discretion to sentence the offender up to the statutory maximum of the law. For scoresheets with sentence dates in FY 2015-2016, there were 53,924 (72.2%) offenders scoring 44 points or fewer (Table 1).
- For FY 2016-2017, of the offenders scoring in the recommended state prison category, 57.2% were sentenced to state prison, with another 13.2% sentenced to county jail or time served. Of those scoring fewer than 44 points, 6.4% were sentenced to state prison, and 30.9% to county jail/time served. For FY 2015-2016, 59.6% of the offenders scoring above 44 points were sentenced to state prison and another 12.0% of these offenders were sentenced to county jail or time served. Of those scoring fewer than 44 points, 7.4% were sentenced to state prison, and 30.0% to county jail/time served. (Table 1).
- Scoresheets with a state prison sanction decreased from 21.9% in FY 2015-2016 to 20.6% in FY 2016-2017. County jail sanctions increased slightly from 25.0% in FY 2015-2016 to 26.0% in FY 2016-2017. Community Control sanction rates remained the same at 5.1% for both FY 2015-2016 and FY 2016-2017 (Table 1).
- Statewide, 77.4% of offenders (12,944 out of 16,721) receiving a prison sanction scored out to a prison sanction in FY 2016-2017. Table 2 presents the scoring distribution of offenders under the Code for FY 2015-2016 and FY 2016-2017 by circuit and sanction imposed. In FY 2016-2017, Circuit 11 (Miami) had the highest percentage (92.7%) of prison sanctioned scoresheets with more than 44 points while Circuit 19 (Ft. Pierce) had the lowest (57.2%).
- Incarceration rates vary greatly by county and circuit. Jail sanctions also vary greatly depending on the number of beds available and judicial inclination to use the jail sanction. Table 3 represents the distribution of sanction imposed by circuit and county. Although variance in sentencing does exist at the circuit and county level based on the judge involved, variability in the statistics presented in this table could also be as a result of differences in the type of offenders

being sentenced around the state. There are also very small numbers of scoresheets for some of the counties listed in this table. The incarceration rates for counties with fewer than 100 scoresheets could possibly be misleading (Table 3).

- In both FY 2015-2016 and FY 2016-2017, the majority of violent offenders received a state prison sanction (Table 4).
- As would be expected, scoresheets with the highest offense severity levels received a state prison sanction, and those with the lowest received probation (Table 5).
- Consistently, in both FY 2015-2016 and FY 2016-2017, for offenders sentenced to state prison, the majority with offense severity levels of 1 through 5 received less than two years, and those with offense level 10 received more than ten years (Table 6).
- From FY 2015-2016 to FY 2016-2017, the percentage of scoresheets with no prior record or prior misdemeanors increased slightly. Those with four or more felonies remained the same or decreased slightly. (Table 7).
- From FY 2015-2016 to FY 2016-2017, the percentage of scoresheets with no additional offenses as well as those with misdemeanors decreased slightly. The percentage with four or more felonies remained the same or increased slightly (Table 8).

Within the Criminal Punishment Code policy, a true mitigation occurs when an offender scores more than 44 total points and either receives a non-state prison sanction (except drug offender probation) or a state prison sentence length below the 25% permissible discretion. Sanction mitigation occurs when an offender scores more than 44 total points, but receives a non-state prison sanction (except drug offender probation).

- The true mitigation rate for offenders who scored more than 44 total points is 59.4% for FY 2015-2016 and 61.6 % for FY 2016-2017. The sanction mitigation rate (cases that scored to state prison but received a non-state prison

sanction) was 39.1 % for FY 2015-2016 and 40.4% for FY 2016-2017 (Table 11).

- For the offenders who received a mitigated prison sentence length, the average reduction in sentence was 24.9 months during FY 2015-2016 and 22.9 months during FY 2016-2017 (Table 11).

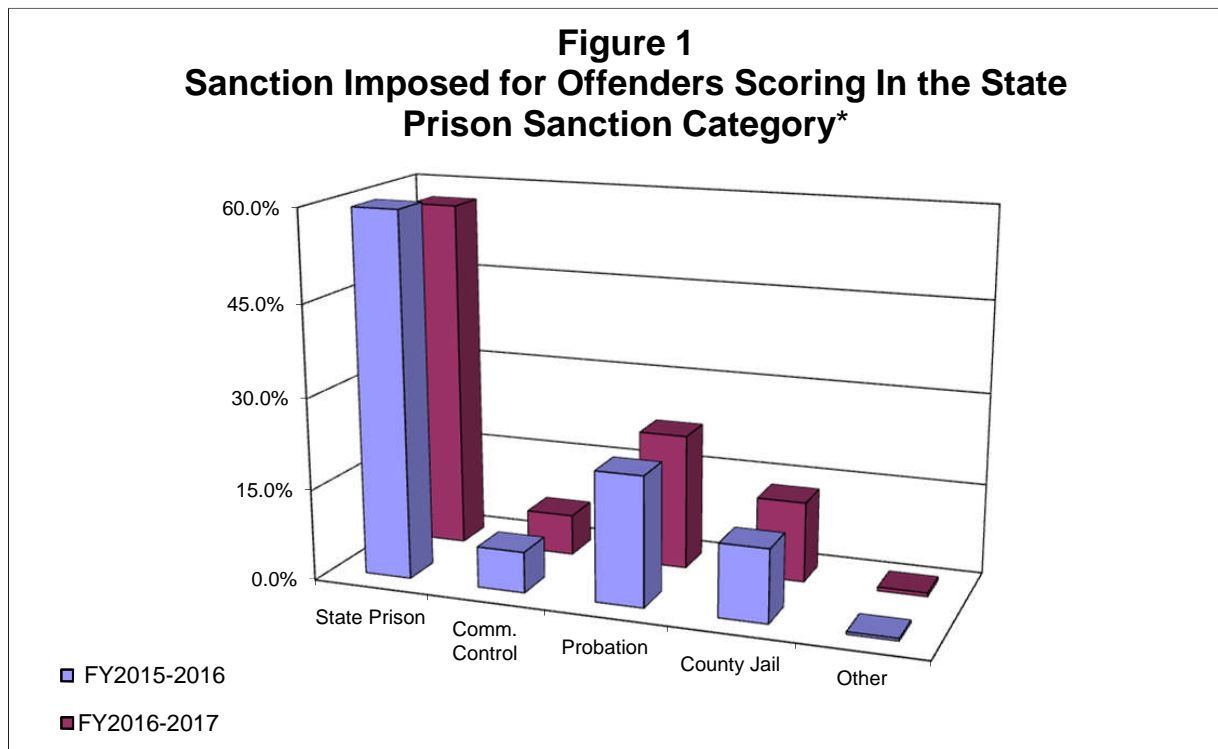
Departure, as defined here, is not a comment on the legality of the sentence. There are many reasons for departure, which are recognized as legitimate under F. S. 921.0026. In addition, other Statutes, such as F.S. 948.034, establish special conditions allowing for departures from recommended sentences. Database limitations do not allow us to isolate all these reasons for departure.



**Table 1**  
**Recommended Sanction Category by Sanction Imposed**

Sanction Imposed	Recommended Sanction Category							
	FY 2015-2016 Sentence Dates <sup>1</sup>				FY 2016-2017 Sentence Dates <sup>2</sup>			
	22.0 Points or Less	22.1 to 44.0 Points	More than 44.0 Points	Total	22.0 Points or Less	22.1 to 44.0 Points	More than 44.0 Points	Total
State Prison	591 2.5%	3,426 11.4%	12,382 59.6%	<b>16,399</b> <b>21.9%</b>	376 1.5%	3,401 10.2%	12,944 57.2%	<b>16,721</b> <b>20.6%</b>
Community Control	639 2.7%	1,810 6.0%	1,397 6.7%	<b>3,846</b> <b>5.1%</b>	684 2.7%	1,983 5.9%	1,517 6.7%	<b>4,184</b> <b>5.1%</b>
Probation	15,896 66.6%	15,080 50.2%	4,430 21.3%	<b>35,406</b> <b>47.4%</b>	17,023 67.1%	16,642 49.8%	5,026 22.2%	<b>38,691</b> <b>47.6%</b>
County Jail	6,625 27.8%	9,553 31.8%	2,498 12.0%	<b>18,676</b> <b>25.0%</b>	7,124 28.1%	11,028 33.0%	2,994 13.2%	<b>21,146</b> <b>26.0%</b>
Other	118 0.5%	186 0.6%	82 0.4%	<b>386</b> <b>0.5%</b>	151 0.6%	332 1.0%	133 0.6%	<b>616</b> <b>0.8%</b>
<b>Total</b>	<b>23,869</b> <b>100.0%</b>	<b>30,055</b> <b>100.0%</b>	<b>20,789</b> <b>100.0%</b>	<b>74,713</b> <b>100.0%</b>	<b>25,358</b> <b>100.0%</b>	<b>33,386</b> <b>100.0%</b>	<b>22,614</b> <b>100.0%</b>	<b>81,358</b> <b>100.0%</b>

**Figure 1**  
**Sanction Imposed for Offenders Scoring In the State Prison Sanction Category\***



\*Total points greater than 44.

<sup>1</sup> Offense dates on or after October 1, 2014.

<sup>2</sup> Offense dates on or after October 1, 2015.

**Table 2**  
**Recommended Sanction Category by Sanction Imposed**

Judicial Circuit / Sanction Imposed	Recommended Sanction Category											
	FY 2015-2016 Sentence Dates <sup>1</sup>					FY 2016-2017 Sentence Dates <sup>2</sup>						
	22.0 Points or Less		22.1 to 44.0 Points		More than 44.0 Points	22.0 Points or Less		22.1 to 44.0 Points		More than 44.0 Points		
<b>01 (Pensacola)</b>	<b>1,679</b>	<b>34.8%</b>	<b>2,038</b>	<b>42.2%</b>	<b>1,108</b>	<b>23.0%</b>	<b>1,970</b>	<b>37.0%</b>	<b>2,290</b>	<b>43.0%</b>	<b>1,063</b>	<b>20.0%</b>
Prison	37	3.7%	204	20.6%	748	75.6%	30	3.2%	179	19.4%	716	77.4%
Community Control	95	24.2%	210	53.6%	87	22.2%	122	28.9%	223	52.8%	77	18.2%
Probation	1,209	50.0%	1,030	42.6%	178	7.4%	1,437	52.7%	1,124	41.2%	167	6.1%
County Jail	327	33.3%	570	58.1%	84	8.6%	360	30.4%	732	61.9%	91	7.7%
Other	11	23.9%	24	52.2%	11	23.9%	21	32.3%	32	49.2%	12	18.5%
<b>02 (Tallahassee)</b>	<b>536</b>	<b>27.8%</b>	<b>739</b>	<b>38.4%</b>	<b>651</b>	<b>33.8%</b>	<b>567</b>	<b>26.8%</b>	<b>818</b>	<b>38.6%</b>	<b>733</b>	<b>34.6%</b>
Prison	10	2.3%	65	15.1%	356	82.6%	9	2.1%	59	14.0%	352	83.8%
Community Control	14	14.0%	39	39.0%	47	47.0%	11	9.6%	44	38.6%	59	51.8%
Probation	393	37.6%	455	43.5%	197	18.9%	422	37.1%	484	42.6%	230	20.2%
County Jail	113	33.6%	174	51.8%	49	14.6%	123	28.0%	226	51.4%	91	20.7%
Other	6	42.9%	6	42.9%	2	14.3%	2	25.0%	5	62.5%	1	12.5%
<b>03 (Lake City)</b>	<b>334</b>	<b>23.2%</b>	<b>580</b>	<b>40.3%</b>	<b>524</b>	<b>36.4%</b>	<b>399</b>	<b>26.0%</b>	<b>664</b>	<b>43.3%</b>	<b>471</b>	<b>30.7%</b>
Prison	7	2.1%	84	25.2%	242	72.7%	8	2.1%	115	30.6%	253	67.3%
Community Control	14	8.5%	79	47.9%	72	43.6%	30	15.9%	109	57.7%	50	26.5%
Probation	279	36.4%	333	43.4%	155	20.2%	320	39.7%	353	43.8%	133	16.5%
County Jail	28	24.8%	51	45.1%	34	30.1%	37	35.2%	50	47.6%	18	17.1%
Other	6	10.0%	33	55.0%	21	35.0%	4	6.9%	37	63.8%	17	29.3%
<b>04 (Jacksonville)</b>	<b>682</b>	<b>21.4%</b>	<b>1,265</b>	<b>39.7%</b>	<b>1,243</b>	<b>39.0%</b>	<b>1,133</b>	<b>26.3%</b>	<b>1,810</b>	<b>42.0%</b>	<b>1,370</b>	<b>31.8%</b>
Prison	58	3.7%	498	31.5%	1,025	64.8%	38	2.6%	417	28.4%	1,015	69.0%
Community Control	10	24.4%	22	53.7%	9	22.0%	16	23.2%	36	52.2%	17	24.6%
Probation	223	36.1%	282	45.6%	113	18.3%	487	38.6%	605	47.9%	171	13.5%
County Jail	390	41.1%	463	48.8%	96	10.1%	592	39.2%	752	49.8%	167	11.1%
Other	1	0.0%	0	0.0%	0	0.0%	0	#DIV/0!	0	#DIV/0!	0	#DIV/0!
<b>05 (Tavares)</b>	<b>1,492</b>	<b>32.6%</b>	<b>1,809</b>	<b>39.6%</b>	<b>1,270</b>	<b>27.8%</b>	<b>1,739</b>	<b>28.5%</b>	<b>2,611</b>	<b>42.8%</b>	<b>1,754</b>	<b>28.7%</b>
Prison	27	2.3%	216	18.4%	932	79.3%	8	0.5%	332	20.9%	1,250	78.6%
Community Control	45	21.3%	114	54.0%	52	24.6%	46	15.7%	172	58.7%	75	25.6%
Probation	1,044	46.5%	967	43.1%	235	10.5%	1,080	43.9%	1,101	44.8%	278	11.3%
County Jail	348	38.8%	500	55.8%	48	5.4%	583	34.3%	976	57.4%	141	8.3%
Other	28	65.1%	12	27.9%	3	7.0%	22	35.5%	30	48.4%	10	16.1%
<b>06 (Clearwater)</b>	<b>2,304</b>	<b>31.9%</b>	<b>3,264</b>	<b>45.2%</b>	<b>1,658</b>	<b>22.9%</b>	<b>2,157</b>	<b>30.5%</b>	<b>3,218</b>	<b>45.6%</b>	<b>1,689</b>	<b>23.9%</b>
Prison	21	1.6%	178	13.7%	1,105	84.7%	18	1.5%	170	13.9%	1,031	84.6%
Community Control	30	14.6%	113	55.1%	62	30.2%	19	14.8%	70	54.7%	39	30.5%
Probation	1,189	42.9%	1,298	46.8%	286	10.3%	1,068	40.1%	1,241	46.6%	354	13.3%
County Jail	1,058	36.2%	1,664	56.9%	200	6.8%	1,037	34.9%	1,691	56.9%	244	8.2%
Other	6	27.3%	11	50.0%	5	22.7%	15	18.3%	46	56.1%	21	25.6%
<b>07 (Daytona)</b>	<b>1,617</b>	<b>44.4%</b>	<b>1,351</b>	<b>37.1%</b>	<b>676</b>	<b>18.6%</b>	<b>1,781</b>	<b>41.7%</b>	<b>1,564</b>	<b>36.6%</b>	<b>923</b>	<b>21.6%</b>
Prison	227	22.9%	347	35.0%	418	42.1%	99	10.1%	283	28.9%	596	60.9%
Community Control	65	32.0%	84	41.4%	54	26.6%	59	26.9%	102	46.6%	58	26.5%
Probation	1,063	52.4%	787	38.8%	177	8.7%	1,378	55.7%	897	36.2%	200	8.1%
County Jail	255	62.3%	127	31.1%	27	6.6%	235	42.1%	263	47.1%	60	10.8%
Other	7	53.8%	6	46.2%	0	0.0%	10	26.3%	19	50.0%	9	23.7%
<b>08 (Gainesville)</b>	<b>579</b>	<b>28.4%</b>	<b>856</b>	<b>41.9%</b>	<b>607</b>	<b>29.7%</b>	<b>703</b>	<b>29.7%</b>	<b>943</b>	<b>39.9%</b>	<b>718</b>	<b>30.4%</b>
Prison	8	1.3%	171	28.4%	423	70.3%	16	2.1%	219	29.2%	515	68.7%
Community Control	18	18.8%	52	54.2%	26	27.1%	23	25.6%	40	44.4%	27	30.0%
Probation	392	43.4%	402	44.5%	110	12.2%	488	46.3%	441	41.9%	124	11.8%

**Table 2**  
**Recommended Sanction Category by Sanction Imposed**

Judicial Circuit / Sanction Imposed	Recommended Sanction Category											
	FY 2015-2016 Sentence Dates <sup>1</sup>					FY 2016-2017 Sentence Dates <sup>2</sup>						
	22.0 Points or Less		22.1 to 44.0 Points		More than 44.0 Points	22.0 Points or Less		22.1 to 44.0 Points		More than 44.0 Points		
County Jail	153	37.4%	213	52.1%	43	10.5%	165	39.4%	210	50.1%	44	10.5%
Other	8	25.8%	18	58.1%	5	16.1%	11	21.2%	33	63.5%	8	15.4%
<b>09 (Orlando)</b>	<b>2,649</b>	<b>35.6%</b>	<b>2,885</b>	<b>38.8%</b>	<b>1,897</b>	<b>25.5%</b>	<b>2,572</b>	<b>34.4%</b>	<b>2,944</b>	<b>39.4%</b>	<b>1,961</b>	<b>26.2%</b>
Prison	32	2.2%	201	13.6%	1,241	84.2%	32	2.3%	214	15.5%	1,132	82.1%
Community Control	46	23.5%	80	40.8%	70	35.7%	38	16.9%	92	40.9%	95	42.2%
Probation	1,518	49.5%	1,225	39.9%	324	10.6%	1,520	47.6%	1,266	39.6%	410	12.8%
County Jail	1,048	39.1%	1,372	51.2%	261	9.7%	982	36.7%	1,369	51.2%	324	12.1%
Other	5	38.5%	7	53.8%	1	7.7%	0	0.0%	3	100.0%	0	0.0%
<b>10 (Bartow)</b>	<b>1,099</b>	<b>29.2%</b>	<b>1,795</b>	<b>47.7%</b>	<b>867</b>	<b>23.1%</b>	<b>1,233</b>	<b>28.6%</b>	<b>2,024</b>	<b>47.0%</b>	<b>1,052</b>	<b>24.4%</b>
Prison	9	1.0%	230	25.2%	674	73.8%	6	0.6%	226	21.4%	826	78.1%
Community Control	44	16.5%	176	66.2%	46	17.3%	41	14.6%	194	69.0%	46	16.4%
Probation	834	43.0%	987	50.9%	118	6.1%	988	43.2%	1,160	50.7%	141	6.2%
County Jail	205	33.0%	390	62.8%	26	4.2%	194	29.1%	436	65.4%	37	5.5%
Other	7	31.8%	12	54.5%	3	13.6%	4	28.6%	8	57.1%	2	14.3%
<b>11 (Miami)</b>	<b>1,234</b>	<b>28.6%</b>	<b>1,321</b>	<b>30.6%</b>	<b>1,761</b>	<b>40.8%</b>	<b>1,344</b>	<b>28.1%</b>	<b>1,557</b>	<b>32.6%</b>	<b>1,874</b>	<b>39.2%</b>
Prison	2	0.3%	32	5.5%	549	94.2%	11	2.2%	25	5.1%	456	92.7%
Community Control	15	6.1%	50	20.5%	179	73.4%	17	6.7%	57	22.6%	178	70.6%
Probation	846	43.0%	662	33.7%	458	23.3%	947	39.9%	869	36.6%	558	23.5%
County Jail	371	24.4%	576	37.8%	575	37.8%	369	22.3%	606	36.6%	682	41.2%
Other	0	0.0%	1	0.0%	0	0.0%	0	#DIV/0!	0	#DIV/0!	0	#DIV/0!
<b>12 (Sarasota)</b>	<b>1,038</b>	<b>30.8%</b>	<b>1,507</b>	<b>44.7%</b>	<b>824</b>	<b>24.5%</b>	<b>1,093</b>	<b>31.4%</b>	<b>1,521</b>	<b>43.7%</b>	<b>866</b>	<b>24.9%</b>
Prison	7	1.0%	111	16.1%	572	82.9%	10	1.4%	116	16.7%	567	81.8%
Community Control	61	25.0%	133	54.5%	50	20.5%	68	28.0%	116	47.7%	59	24.3%
Probation	707	45.0%	718	45.7%	145	9.2%	723	41.9%	814	47.1%	190	11.0%
County Jail	261	30.3%	543	63.1%	57	6.6%	290	35.7%	473	58.2%	50	6.2%
Other	2	50.0%	2	50.0%	0	0.0%	2	50.0%	2	50.0%	0	0.0%
<b>13 (Tampa)</b>	<b>1,543</b>	<b>27.3%</b>	<b>1,960</b>	<b>34.7%</b>	<b>2,150</b>	<b>38.0%</b>	<b>1,541</b>	<b>25.9%</b>	<b>2,065</b>	<b>34.7%</b>	<b>2,337</b>	<b>39.3%</b>
Prison	7	0.7%	117	11.0%	939	88.3%	3	0.3%	121	11.0%	975	88.7%
Community Control	10	3.5%	68	23.9%	206	72.5%	22	6.2%	73	20.7%	258	73.1%
Probation	1,040	37.7%	1,141	41.4%	578	20.9%	993	33.7%	1,246	42.3%	704	23.9%
County Jail	478	31.2%	630	41.2%	422	27.6%	512	33.6%	616	40.5%	394	25.9%
Other	8	47.1%	4	23.5%	5	29.4%	11	42.3%	9	34.6%	6	23.1%
<b>14 (Panama City)</b>	<b>540</b>	<b>22.0%</b>	<b>1,166</b>	<b>47.6%</b>	<b>745</b>	<b>30.4%</b>	<b>693</b>	<b>24.7%</b>	<b>1,324</b>	<b>47.2%</b>	<b>787</b>	<b>28.1%</b>
Prison	24	3.2%	250	33.3%	477	63.5%	24	3.1%	246	31.8%	504	65.1%
Community Control	26	11.2%	121	52.2%	85	36.6%	42	12.2%	211	61.2%	92	26.7%
Probation	475	34.1%	757	54.3%	163	11.7%	584	39.0%	760	50.7%	154	10.3%
County Jail	10	21.7%	24	52.2%	12	26.1%	22	31.4%	39	55.7%	9	12.9%
Other	5	18.5%	14	51.9%	8	29.6%	21	17.9%	68	58.1%	28	23.9%
<b>15 (West Palm Beach)</b>	<b>898</b>	<b>26.9%</b>	<b>1,263</b>	<b>37.9%</b>	<b>1,172</b>	<b>35.2%</b>	<b>900</b>	<b>23.8%</b>	<b>1,551</b>	<b>41.1%</b>	<b>1,327</b>	<b>35.1%</b>
Prison	6	0.9%	74	10.9%	596	88.2%	3	0.4%	77	10.2%	677	89.4%
Community Control	2	5.6%	11	30.6%	23	63.9%	7	13.0%	25	46.3%	22	40.7%
Probation	458	39.8%	463	40.2%	231	20.1%	417	34.6%	554	45.9%	235	19.5%
County Jail	430	29.5%	711	48.7%	319	21.8%	469	27.1%	880	50.8%	384	22.2%
Other	2	22.2%	4	44.4%	3	33.3%	4	14.3%	15	53.6%	9	32.1%
<b>16 (Key West)</b>	<b>133</b>	<b>27.4%</b>	<b>195</b>	<b>40.1%</b>	<b>158</b>	<b>32.5%</b>	<b>124</b>	<b>27.0%</b>	<b>221</b>	<b>48.1%</b>	<b>114</b>	<b>24.8%</b>
Prison	0	0.0%	11	11.6%	84	88.4%	1	1.5%	19	28.4%	47	70.1%

**Table 2**  
**Recommended Sanction Category by Sanction Imposed**

Judicial Circuit / Sanction Imposed	Recommended Sanction Category											
	FY 2015-2016 Sentence Dates <sup>1</sup>						FY 2016-2017 Sentence Dates <sup>2</sup>					
	22.0 Points or Less		22.1 to 44.0 Points		More than 44.0 Points		22.0 Points or Less		22.1 to 44.0 Points		More than 44.0 Points	
Community Control	1	2.3%	26	60.5%	16	37.2%	3	8.8%	16	47.1%	15	44.1%
Probation	106	40.3%	118	44.9%	39	14.8%	96	34.7%	142	51.3%	39	14.1%
County Jail	24	29.6%	39	48.1%	18	22.2%	20	29.9%	36	53.7%	11	16.4%
Other	2	0.0%	1	0.0%	1	0.0%	4	28.6%	8	57.1%	2	14.3%
<b>17 (Ft. Lauderdale)</b>	<b>1,321</b>	<b>36.8%</b>	<b>1,327</b>	<b>37.0%</b>	<b>937</b>	<b>26.1%</b>	<b>1,227</b>	<b>33.5%</b>	<b>1,339</b>	<b>36.6%</b>	<b>1,096</b>	<b>29.9%</b>
Prison	14	3.1%	67	14.7%	375	82.2%	10	2.0%	52	10.3%	441	87.7%
Community Control	21	12.1%	61	35.1%	92	52.9%	13	7.1%	41	22.4%	129	70.5%
Probation	1,218	45.1%	1,060	39.3%	421	15.6%	1,101	44.1%	961	38.5%	432	17.3%
County Jail	63	26.4%	131	54.8%	45	18.8%	90	19.6%	281	61.1%	89	19.3%
Other	5	29.4%	8	47.1%	4	23.5%	13	59.1%	4	18.2%	5	22.7%
<b>18 (Sanford)</b>	<b>1,477</b>	<b>34.2%</b>	<b>1,852</b>	<b>42.9%</b>	<b>990</b>	<b>22.9%</b>	<b>1,465</b>	<b>33.5%</b>	<b>1,888</b>	<b>43.1%</b>	<b>1,023</b>	<b>23.4%</b>
Prison	14	2.0%	120	16.9%	577	81.2%	9	1.2%	96	13.0%	633	85.8%
Community Control	46	11.5%	197	49.4%	156	39.1%	48	12.7%	184	48.8%	145	38.5%
Probation	1,160	49.2%	1,018	43.1%	182	7.7%	1,215	47.6%	1,151	45.0%	189	7.4%
County Jail	251	30.8%	497	61.1%	66	8.1%	187	27.3%	445	65.0%	53	7.7%
Other	6	17.1%	20	57.1%	9	25.7%	6	28.6%	12	57.1%	3	14.3%
<b>19 (Ft. Pierce)</b>	<b>1,164</b>	<b>41.8%</b>	<b>1,030</b>	<b>36.9%</b>	<b>594</b>	<b>21.3%</b>	<b>1,108</b>	<b>40.7%</b>	<b>1,100</b>	<b>40.4%</b>	<b>516</b>	<b>18.9%</b>
Prison	72	9.1%	281	35.4%	440	55.5%	28	3.9%	277	38.9%	407	57.2%
Community Control	48	48.0%	36	36.0%	16	16.0%	39	32.5%	62	51.7%	19	15.8%
Probation	674	57.9%	394	33.8%	97	8.3%	659	57.4%	431	37.5%	59	5.1%
County Jail	368	50.8%	317	43.7%	40	5.5%	381	51.3%	330	44.5%	31	4.2%
Other	2	40.0%	2	40.0%	1	20.0%	1	100.0%	0	0.0%	0	0.0%
<b>20 (Ft. Myers)</b>	<b>1,547</b>	<b>35.5%</b>	<b>1,851</b>	<b>42.5%</b>	<b>957</b>	<b>22.0%</b>	<b>1,607</b>	<b>35.9%</b>	<b>1,933</b>	<b>43.1%</b>	<b>940</b>	<b>21.0%</b>
Prison	9	1.1%	168	21.4%	609	77.5%	13	1.8%	158	21.9%	551	76.3%
Community Control	28	13.0%	138	64.2%	49	22.8%	20	10.4%	116	60.1%	57	29.5%
Probation	1,068	47.0%	983	43.2%	223	9.8%	1,100	45.8%	1,042	43.4%	258	10.8%
County Jail	441	40.9%	561	52.0%	76	7.1%	474	40.7%	616	52.9%	74	6.4%
Other	1	50.0%	1	50.0%	0	0.0%	0	0.0%	1	100.0%	0	0.0%
<b>Statewide</b>	<b>23,866</b>	<b>100.0%</b>	<b>30,054</b>	<b>100.0%</b>	<b>20,789</b>	<b>100.0%</b>	<b>25,356</b>	<b>100.0%</b>	<b>33,385</b>	<b>100.0%</b>	<b>22,614</b>	<b>100.0%</b>

Note: County jail includes those sentenced to time served; prison includes those sentenced to life.

<sup>1</sup> Offense dates on or after October 1, 2014.

<sup>2</sup> Offense dates on or after October 1, 2015.

**Table 3**  
**Sanction Imposed By Judicial Circuit and County**

Circuit/County	FY 2015-2016 Sentence Dates <sup>1</sup>						FY2016-2017 Sentence Dates <sup>2</sup>					
	State Prison	Comm. Control	Probation	County Jail	Other Sentence	Total	State Prison	Comm. Control	Probation	County Jail	Other Sentence	Total
<b>01 (Pensacola)</b>	<b>989</b>	<b>392</b>	<b>2,417</b>	<b>981</b>	<b>46</b>	<b>4,825</b>	<b>925</b>	<b>422</b>	<b>2,728</b>	<b>1,183</b>	<b>65</b>	<b>5,323</b>
	<b>20.5%</b>	<b>8.1%</b>	<b>50.1%</b>	<b>20.3%</b>	<b>1.0%</b>	<b>100.0%</b>	<b>17.4%</b>	<b>7.9%</b>	<b>51.2%</b>	<b>22.2%</b>	<b>1.2%</b>	<b>100.0%</b>
Escambia	481	199	1,016	576	21	<b>2,293</b>	480	210	1,151	649	37	<b>2,527</b>
	21.0%	8.7%	44.3%	25.1%	0.9%	<b>100.0%</b>	19.0%	8.3%	45.5%	25.7%	1.5%	<b>100.0%</b>
Okaloosa	294	138	803	162	17	<b>1,414</b>	260	123	792	242	21	<b>1,438</b>
	20.8%	9.8%	56.8%	11.5%	1.2%	<b>100.0%</b>	18.1%	8.6%	55.1%	16.8%	1.5%	<b>100.0%</b>
Santa Rosa	138	36	372	183	8	<b>737</b>	124	61	536	233	7	<b>961</b>
	18.7%	4.9%	50.5%	24.8%	1.1%	<b>100.0%</b>	12.9%	6.3%	55.8%	24.2%	0.7%	<b>100.0%</b>
Walton	76	19	226	60	0	<b>381</b>	61	28	249	59	0	<b>397</b>
	19.9%	5.0%	59.3%	15.7%	0.0%	<b>100.0%</b>	15.4%	7.1%	62.7%	14.9%	0.0%	<b>100.0%</b>
<b>02 (Tallahassee)</b>	<b>431</b>	<b>100</b>	<b>1,045</b>	<b>336</b>	<b>14</b>	<b>1,926</b>	<b>420</b>	<b>114</b>	<b>1,136</b>	<b>440</b>	<b>8</b>	<b>2,118</b>
	<b>22.4%</b>	<b>5.2%</b>	<b>54.3%</b>	<b>17.4%</b>	<b>0.7%</b>	<b>100.0%</b>	<b>19.8%</b>	<b>5.4%</b>	<b>53.6%</b>	<b>20.8%</b>	<b>0.4%</b>	<b>100.0%</b>
Franklin	14	9	61	6	1	<b>91</b>	18	14	50	11	1	<b>94</b>
	15.4%	9.9%	67.0%	6.6%	1.1%	<b>100.0%</b>	19.1%	14.9%	53.2%	11.7%	1.1%	<b>100.0%</b>
Gadsden	35	5	113	15	1	<b>169</b>	29	1	85	7	0	<b>122</b>
	20.7%	3.0%	66.9%	8.9%	0.6%	<b>100.0%</b>	23.8%	0.8%	69.7%	5.7%	0.0%	<b>100.0%</b>
Jefferson	15	4	77	0	0	<b>96</b>	4	3	30	6	1	<b>44</b>
	15.6%	4.2%	80.2%	0.0%	0.0%	<b>100.0%</b>	9.1%	6.8%	68.2%	13.6%	2.3%	<b>100.0%</b>
Leon	337	71	725	303	12	<b>1,448</b>	346	93	863	401	5	<b>1,708</b>
	23.3%	4.9%	50.1%	20.9%	0.8%	<b>100.0%</b>	20.3%	5.4%	50.5%	23.5%	0.3%	<b>100.0%</b>
Liberty	14	5	28	11	0	<b>58</b>	10	3	26	4	0	<b>43</b>
	24.1%	8.6%	48.3%	19.0%	0.0%	<b>100.0%</b>	23.3%	7.0%	60.5%	9.3%	0.0%	<b>100.0%</b>
Wakulla	16	6	41	1	0	<b>64</b>	13	0	82	11	1	<b>107</b>
	25.0%	9.4%	64.1%	1.6%	0.0%	<b>100.0%</b>	12.1%	0.0%	76.6%	10.3%	0.9%	<b>100.0%</b>
<b>03 (Lake City)</b>	<b>333</b>	<b>165</b>	<b>767</b>	<b>113</b>	<b>60</b>	<b>1,438</b>	<b>376</b>	<b>189</b>	<b>806</b>	<b>105</b>	<b>58</b>	<b>1,534</b>
	<b>23.2%</b>	<b>11.5%</b>	<b>53.3%</b>	<b>7.9%</b>	<b>4.2%</b>	<b>100.0%</b>	<b>24.5%</b>	<b>12.3%</b>	<b>52.5%</b>	<b>6.8%</b>	<b>3.8%</b>	<b>100.0%</b>
Columbia	106	47	279	53	16	<b>501</b>	178	49	297	52	22	<b>598</b>
	21.2%	9.4%	55.7%	10.6%	3.2%	<b>100.0%</b>	29.8%	8.2%	49.7%	8.7%	3.7%	<b>100.0%</b>
Dixie	24	8	42	5	6	<b>85</b>	21	36	66	9	7	<b>139</b>
	28.2%	9.4%	49.4%	5.9%	7.1%	<b>100.0%</b>	15.1%	25.9%	47.5%	6.5%	5.0%	<b>100.0%</b>

**Table 3  
Sanction Imposed By Judicial Circuit and County**

Circuit/County	FY 2015-2016 Sentence Dates <sup>1</sup>						FY2016-2017 Sentence Dates <sup>2</sup>					
	State Prison	Comm. Control	Probation	County Jail	Other Sentence	Total	State Prison	Comm. Control	Probation	County Jail	Other Sentence	Total
Hamilton	17 17.3%	3 3.1%	59 60.2%	17 17.3%	2 2.0%	<b>98</b> <b>100.0%</b>	22 24.7%	4 4.5%	48 53.9%	15 16.9%	0 0.0%	<b>89</b> <b>100.0%</b>
Lafayette	8 25.8%	1 3.2%	21 67.7%	0 0.0%	1 3.2%	<b>31</b> <b>100.0%</b>	8 25.0%	5 15.6%	18 56.3%	1 3.1%	0 0.0%	<b>32</b> <b>100.0%</b>
Madison	25 14.5%	10 5.8%	120 69.8%	7 4.1%	10 5.8%	<b>172</b> <b>100.0%</b>	21 11.8%	9 5.1%	131 73.6%	2 1.1%	15 8.4%	<b>178</b> <b>100.0%</b>
Suwannee	94 35.2%	25 9.4%	122 45.7%	23 8.6%	3 1.1%	<b>267</b> <b>100.0%</b>	71 26.2%	41 15.1%	133 49.1%	20 7.4%	6 2.2%	<b>271</b> <b>100.0%</b>
Taylor	59 20.8%	71 25.0%	124 43.7%	8 2.8%	22 7.7%	<b>284</b> <b>100.0%</b>	55 24.2%	45 19.8%	113 49.8%	6 2.6%	8 3.5%	<b>227</b> <b>100.0%</b>
<b>04 (Jacksonville)</b>	<b>1,581</b> <b>49.6%</b>	<b>41</b> <b>1.3%</b>	<b>618</b> <b>19.4%</b>	<b>949</b> <b>29.7%</b>	<b>1</b> <b>0.0%</b>	<b>3,190</b> <b>100.0%</b>	<b>1,470</b> <b>34.1%</b>	<b>69</b> <b>1.6%</b>	<b>1,263</b> <b>29.3%</b>	<b>1,511</b> <b>35.0%</b>	<b>0</b> <b>0.0%</b>	<b>4,313</b> <b>100.0%</b>
Clay	170 40.1%	4 0.9%	103 24.3%	147 34.7%	0 0.0%	<b>424</b> <b>100.0%</b>	192 28.9%	12 1.8%	288 43.3%	173 26.0%	0 0.0%	<b>665</b> <b>100.0%</b>
Duval	1,317 51.2%	35 1.4%	451 17.5%	770 29.9%	1 0.0%	<b>2,574</b> <b>100.0%</b>	1,207 37.0%	49 1.5%	790 24.2%	1,218 37.3%	0 0.0%	<b>3,264</b> <b>100.0%</b>
Nassau	94 49.0%	2 1.0%	64 33.3%	32 16.7%	0 0.0%	<b>192</b> <b>100.0%</b>	71 18.5%	8 2.1%	185 48.2%	120 31.3%	0 0.0%	<b>384</b> <b>100.0%</b>
<b>05 (Tavares)</b>	<b>1,175</b> <b>25.7%</b>	<b>211</b> <b>4.6%</b>	<b>2,246</b> <b>49.1%</b>	<b>896</b> <b>19.6%</b>	<b>43</b> <b>0.9%</b>	<b>4,571</b> <b>100.0%</b>	<b>1,590</b> <b>26.0%</b>	<b>293</b> <b>4.8%</b>	<b>2,459</b> <b>40.3%</b>	<b>1,700</b> <b>27.9%</b>	<b>62</b> <b>1.0%</b>	<b>6,104</b> <b>100.0%</b>
Citrus	214 29.6%	63 8.7%	323 44.7%	118 16.3%	5 0.7%	<b>723</b> <b>100.0%</b>	309 35.8%	82 9.5%	314 36.4%	152 17.6%	5 0.6%	<b>862</b> <b>100.0%</b>
Hernando	261 30.9%	51 6.0%	370 43.8%	158 18.7%	4 0.5%	<b>844</b> <b>100.0%</b>	482 35.4%	88 6.5%	487 35.7%	289 21.2%	17 1.2%	<b>1,363</b> <b>100.0%</b>
Lake	184 13.9%	39 2.9%	730 55.2%	343 25.9%	27 2.0%	<b>1,323</b> <b>100.0%</b>	247 14.1%	65 3.7%	734 42.0%	672 38.5%	29 1.7%	<b>1,747</b> <b>100.0%</b>
Marion	457 34.0%	41 3.0%	677 50.3%	164 12.2%	7 0.5%	<b>1,346</b> <b>100.0%</b>	469 27.7%	38 2.2%	732 43.2%	445 26.3%	10 0.6%	<b>1,694</b> <b>100.0%</b>
Sumter	59 17.6%	17 5.1%	146 43.6%	113 33.7%	0 0.0%	<b>335</b> <b>100.0%</b>	83 18.9%	20 4.6%	192 43.8%	142 32.4%	1 0.2%	<b>438</b> <b>100.0%</b>

**Table 3  
Sanction Imposed By Judicial Circuit and County**

Circuit/County	FY 2015-2016 Sentence Dates <sup>1</sup>						FY2016-2017 Sentence Dates <sup>2</sup>					
	State Prison	Comm. Control	Probation	County Jail	Other Sentence	Total	State Prison	Comm. Control	Probation	County Jail	Other Sentence	Total
<b>06 (Clearwater)</b>	<b>1,304</b>	<b>205</b>	<b>2,773</b>	<b>2,922</b>	<b>22</b>	<b>7,226</b>	<b>1,219</b>	<b>128</b>	<b>2,663</b>	<b>2,972</b>	<b>82</b>	<b>7,064</b>
	<b>18.0%</b>	<b>2.8%</b>	<b>38.4%</b>	<b>40.4%</b>	<b>0.3%</b>	<b>100.0%</b>	<b>17.3%</b>	<b>1.8%</b>	<b>37.7%</b>	<b>42.1%</b>	<b>1.2%</b>	<b>100.0%</b>
Pasco	389	55	929	694	9	<b>2,076</b>	346	40	978	655	10	<b>2,029</b>
	18.7%	2.6%	44.7%	33.4%	0.4%	<b>100.0%</b>	17.1%	2.0%	48.2%	32.3%	0.5%	<b>100.0%</b>
Pinellas	915	150	1,844	2,228	13	<b>5,150</b>	873	88	1,685	2,317	72	<b>5,035</b>
	17.8%	2.9%	35.8%	43.3%	0.3%	<b>100.0%</b>	17.3%	1.7%	33.5%	46.0%	1.4%	<b>100.0%</b>
<b>07 (Daytona)</b>	<b>992</b>	<b>203</b>	<b>2,027</b>	<b>409</b>	<b>13</b>	<b>3,644</b>	<b>978</b>	<b>219</b>	<b>2,475</b>	<b>558</b>	<b>38</b>	<b>4,268</b>
	<b>27.2%</b>	<b>5.6%</b>	<b>55.6%</b>	<b>11.2%</b>	<b>0.4%</b>	<b>100.0%</b>	<b>22.9%</b>	<b>5.1%</b>	<b>58.0%</b>	<b>13.1%</b>	<b>0.9%</b>	<b>100.0%</b>
Flagler	65	22	131	49	2	<b>269</b>	51	7	178	48	4	<b>288</b>
	24.2%	8.2%	48.7%	18.2%	0.7%	<b>100.0%</b>	17.7%	2.4%	61.8%	16.7%	1.4%	<b>100.0%</b>
Putnam	172	27	251	54	3	<b>507</b>	163	25	233	132	13	<b>566</b>
	33.9%	5.3%	49.5%	10.7%	0.6%	<b>100.0%</b>	28.8%	4.4%	41.2%	23.3%	2.3%	<b>100.0%</b>
St. Johns	154	29	405	46	0	<b>634</b>	173	27	406	157	0	<b>763</b>
	24.3%	4.6%	63.9%	7.3%	0.0%	<b>100.0%</b>	22.7%	3.5%	53.2%	20.6%	0.0%	<b>100.0%</b>
Volusia	601	125	1,240	260	8	<b>2,234</b>	591	160	1,658	221	21	<b>2,651</b>
	26.9%	5.6%	55.5%	11.6%	0.4%	<b>100.0%</b>	22.3%	6.0%	62.5%	8.3%	0.8%	<b>100.0%</b>
<b>08 (Gainesville)</b>	<b>602</b>	<b>96</b>	<b>904</b>	<b>409</b>	<b>31</b>	<b>2,042</b>	<b>750</b>	<b>90</b>	<b>1,053</b>	<b>419</b>	<b>52</b>	<b>2,364</b>
	<b>29.5%</b>	<b>4.7%</b>	<b>44.3%</b>	<b>20.0%</b>	<b>1.5%</b>	<b>100.0%</b>	<b>31.7%</b>	<b>3.8%</b>	<b>44.5%</b>	<b>17.7%</b>	<b>2.2%</b>	<b>100.0%</b>
Alachua	406	47	512	268	20	<b>1,253</b>	497	54	595	283	41	<b>1,470</b>
	32.4%	3.8%	40.9%	21.4%	1.6%	<b>100.0%</b>	33.8%	3.7%	40.5%	19.3%	2.8%	<b>100.0%</b>
Baker	59	24	81	25	3	<b>192</b>	93	17	91	10	2	<b>213</b>
	30.7%	12.5%	42.2%	13.0%	1.6%	<b>100.0%</b>	43.7%	8.0%	42.7%	4.7%	0.9%	<b>100.0%</b>
Bradford	44	0	103	61	1	<b>209</b>	48	4	155	51	3	<b>261</b>
	21.1%	0.0%	49.3%	29.2%	0.5%	<b>100.0%</b>	18.4%	1.5%	59.4%	19.5%	1.1%	<b>100.0%</b>
Gilchrist	20	1	33	12	2	<b>68</b>	31	2	64	8	1	<b>106</b>
	29.4%	1.5%	48.5%	17.6%	2.9%	<b>100.0%</b>	29.2%	1.9%	60.4%	7.5%	0.9%	<b>100.0%</b>
Levy	63	18	154	39	4	<b>278</b>	60	10	117	62	4	<b>253</b>
	22.7%	6.5%	55.4%	14.0%	1.4%	<b>100.0%</b>	23.7%	4.0%	46.2%	24.5%	1.6%	<b>100.0%</b>
Union	10	6	21	4	1	<b>42</b>	21	3	31	5	1	<b>61</b>
	23.8%	14.3%	50.0%	9.5%	2.4%	<b>100.0%</b>	34.4%	4.9%	50.8%	8.2%	1.6%	<b>100.0%</b>



**Table 3  
Sanction Imposed By Judicial Circuit and County**

Circuit/County	FY 2015-2016 Sentence Dates <sup>1</sup>						FY2016-2017 Sentence Dates <sup>2</sup>					
	State Prison	Comm. Control	Probation	County Jail	Other Sentence	Total	State Prison	Comm. Control	Probation	County Jail	Other Sentence	Total
<b>09 (Orlando)</b>	<b>1,474</b>	<b>196</b>	<b>3,067</b>	<b>2,681</b>	<b>13</b>	<b>7,431</b>	<b>1,378</b>	<b>225</b>	<b>3,196</b>	<b>2,675</b>	<b>3</b>	<b>7,477</b>
	<b>19.8%</b>	<b>2.6%</b>	<b>41.3%</b>	<b>36.1%</b>	<b>0.2%</b>	<b>100.0%</b>	<b>18.4%</b>	<b>3.0%</b>	<b>42.7%</b>	<b>35.8%</b>	<b>0.0%</b>	<b>100.0%</b>
Orange	1,246	121	2,320	2,167	13	<b>5,867</b>	963	143	2,364	2,161	3	<b>5,634</b>
	21.2%	2.1%	39.5%	36.9%	0.2%	<b>100.0%</b>	17.1%	2.5%	42.0%	38.4%	0.1%	<b>100.0%</b>
Osceola	228	75	747	514	0	<b>1,564</b>	415	82	832	514	0	<b>1,843</b>
	14.6%	4.8%	47.8%	32.9%	0.0%	<b>100.0%</b>	22.5%	4.4%	45.1%	27.9%	0.0%	<b>100.0%</b>
<b>10 (Bartow)</b>	<b>913</b>	<b>266</b>	<b>1,939</b>	<b>621</b>	<b>22</b>	<b>3,761</b>	<b>1,058</b>	<b>281</b>	<b>2,289</b>	<b>667</b>	<b>14</b>	<b>4,309</b>
	<b>24.3%</b>	<b>7.1%</b>	<b>51.6%</b>	<b>16.5%</b>	<b>0.6%</b>	<b>100.0%</b>	<b>24.6%</b>	<b>6.5%</b>	<b>53.1%</b>	<b>15.5%</b>	<b>0.3%</b>	<b>100.0%</b>
Hardee	37	14	110	34	2	<b>197</b>	40	8	106	18	1	<b>173</b>
	18.8%	7.1%	55.8%	17.3%	1.0%	<b>100.0%</b>	23.1%	4.6%	61.3%	10.4%	0.6%	<b>100.0%</b>
Highlands	87	27	228	63	6	<b>411</b>	89	48	239	103	9	<b>488</b>
	21.2%	6.6%	55.5%	15.3%	1.5%	<b>100.0%</b>	18.2%	9.8%	49.0%	21.1%	1.8%	<b>100.0%</b>
Polk	789	225	1,601	524	14	<b>3,153</b>	929	225	1,944	546	4	<b>3,648</b>
	25.0%	7.1%	50.8%	16.6%	0.4%	<b>100.0%</b>	25.5%	6.2%	53.3%	15.0%	0.1%	<b>100.0%</b>
<b>11 (Miami)</b>	<b>583</b>	<b>244</b>	<b>1,966</b>	<b>1,522</b>	<b>1</b>	<b>4,316</b>	<b>492</b>	<b>252</b>	<b>2,374</b>	<b>1,657</b>	<b>0</b>	<b>4,775</b>
	<b>13.5%</b>	<b>5.7%</b>	<b>45.6%</b>	<b>35.3%</b>	<b>0.0%</b>	<b>100.0%</b>	<b>10.3%</b>	<b>5.3%</b>	<b>49.7%</b>	<b>34.7%</b>	<b>0.0%</b>	<b>100.0%</b>
Miami-Dade	583	244	1,966	1,522	1	<b>4,316</b>	492	252	2,374	1,657	0	<b>4,775</b>
	13.5%	5.7%	45.6%	35.3%	0.0%	<b>100.0%</b>	10.3%	5.3%	49.7%	34.7%	0.0%	<b>100.0%</b>
<b>12 (Sarasota)</b>	<b>690</b>	<b>244</b>	<b>1,570</b>	<b>861</b>	<b>4</b>	<b>3,369</b>	<b>693</b>	<b>243</b>	<b>1,727</b>	<b>813</b>	<b>4</b>	<b>3,480</b>
	<b>20.5%</b>	<b>7.2%</b>	<b>46.6%</b>	<b>25.6%</b>	<b>0.1%</b>	<b>100.0%</b>	<b>19.9%</b>	<b>7.0%</b>	<b>49.6%</b>	<b>23.4%</b>	<b>0.1%</b>	<b>100.0%</b>
Desoto	66	37	120	43	0	<b>266</b>	76	35	140	45	1	<b>297</b>
	24.8%	13.9%	45.1%	16.2%	0.0%	<b>100.0%</b>	25.6%	11.8%	47.1%	15.2%	0.3%	<b>100.0%</b>
Manatee	287	94	668	312	0	<b>1,361</b>	292	86	747	345	2	<b>1,472</b>
	21.1%	6.9%	49.1%	22.9%	0.0%	<b>100.0%</b>	19.8%	5.8%	50.7%	23.4%	0.1%	<b>100.0%</b>
Sarasota	337	113	782	506	4	<b>1,742</b>	325	122	840	423	1	<b>1,711</b>
	19.3%	6.5%	44.9%	29.0%	0.2%	<b>100.0%</b>	19.0%	7.1%	49.1%	24.7%	0.1%	<b>100.0%</b>
<b>13 (Tampa)</b>	<b>1,063</b>	<b>284</b>	<b>2,759</b>	<b>1,530</b>	<b>17</b>	<b>5,653</b>	<b>1,099</b>	<b>353</b>	<b>2,943</b>	<b>1,522</b>	<b>26</b>	<b>5,943</b>
	<b>18.8%</b>	<b>5.0%</b>	<b>48.8%</b>	<b>27.1%</b>	<b>0.3%</b>	<b>100.0%</b>	<b>18.5%</b>	<b>5.9%</b>	<b>49.5%</b>	<b>25.6%</b>	<b>0.4%</b>	<b>100.0%</b>
Hillsborough	1,063	284	2,759	1,530	17	<b>5,653</b>	1,099	353	2,943	1,522	26	<b>5,943</b>
	18.8%	5.0%	48.8%	27.1%	0.3%	<b>100.0%</b>	18.5%	5.9%	49.5%	25.6%	0.4%	<b>100.0%</b>



**Table 3**  
**Sanction Imposed By Judicial Circuit and County**

Circuit/County	FY 2015-2016 Sentence Dates <sup>1</sup>						FY2016-2017 Sentence Dates <sup>2</sup>					
	State Prison	Comm. Control	Probation	County Jail	Other Sentence	Total	State Prison	Comm. Control	Probation	County Jail	Other Sentence	Total
<b>14 (Panama City)</b>	<b>751</b>	<b>232</b>	<b>1,395</b>	<b>46</b>	<b>27</b>	<b>2,451</b>	<b>774</b>	<b>345</b>	<b>1,498</b>	<b>70</b>	<b>117</b>	<b>2,804</b>
	<b>30.6%</b>	<b>9.5%</b>	<b>56.9%</b>	<b>1.9%</b>	<b>1.1%</b>	<b>100.0%</b>	<b>27.6%</b>	<b>12.3%</b>	<b>53.4%</b>	<b>2.5%</b>	<b>4.2%</b>	<b>100.0%</b>
Bay	509	174	1,103	26	19	<b>1,831</b>	474	218	957	40	75	<b>1,764</b>
	27.8%	9.5%	60.2%	1.4%	1.0%	<b>100.0%</b>	26.9%	12.4%	54.3%	2.3%	4.3%	<b>100.0%</b>
Calhoun	18	15	58	4	1	<b>96</b>	19	16	76	0	7	<b>118</b>
	18.8%	15.6%	60.4%	4.2%	1.0%	<b>100.0%</b>	16.1%	13.6%	64.4%	0.0%	5.9%	<b>100.0%</b>
Gulf	36	6	52	5	5	<b>104</b>	37	19	70	8	21	<b>155</b>
	34.6%	5.8%	50.0%	4.8%	4.8%	<b>100.0%</b>	23.9%	12.3%	45.2%	5.2%	13.5%	<b>100.0%</b>
Holmes	38	11	28	0	0	<b>77</b>	44	55	128	5	4	<b>236</b>
	49.4%	14.3%	36.4%	0.0%	0.0%	<b>100.0%</b>	18.6%	23.3%	54.2%	2.1%	1.7%	<b>100.0%</b>
Jackson	115	15	90	10	0	<b>230</b>	162	13	149	11	7	<b>342</b>
	50.0%	6.5%	39.1%	4.3%	0.0%	<b>100.0%</b>	47.4%	3.8%	43.6%	3.2%	2.0%	<b>100.0%</b>
Washington	35	11	64	1	2	<b>113</b>	38	24	118	6	3	<b>189</b>
	31.0%	9.7%	56.6%	0.9%	1.8%	<b>100.0%</b>	20.1%	12.7%	62.4%	3.2%	1.6%	<b>100.0%</b>
<b>15 (West Palm Beach)</b>	<b>676</b>	<b>36</b>	<b>1,152</b>	<b>1,460</b>	<b>9</b>	<b>3,333</b>	<b>757</b>	<b>54</b>	<b>1,206</b>	<b>1,733</b>	<b>28</b>	<b>3,778</b>
	<b>20.3%</b>	<b>1.1%</b>	<b>34.6%</b>	<b>43.8%</b>	<b>0.3%</b>	<b>100.0%</b>	<b>20.0%</b>	<b>1.4%</b>	<b>31.9%</b>	<b>45.9%</b>	<b>0.7%</b>	<b>100.0%</b>
Palm Beach	676	36	1,152	1,460	9	<b>3,333</b>	757	54	1,206	1,733	28	<b>3,778</b>
	<b>20.3%</b>	<b>1.1%</b>	<b>34.6%</b>	<b>43.8%</b>	<b>0.3%</b>	<b>100.0%</b>	20.0%	1.4%	31.9%	45.9%	0.7%	<b>100.0%</b>
<b>16 (Key West)</b>	<b>95</b>	<b>43</b>	<b>263</b>	<b>81</b>	<b>4</b>	<b>486</b>	<b>67</b>	<b>34</b>	<b>277</b>	<b>67</b>	<b>14</b>	<b>459</b>
	<b>19.5%</b>	<b>8.8%</b>	<b>54.1%</b>	<b>16.7%</b>	<b>0.8%</b>	<b>100.0%</b>	<b>14.6%</b>	<b>7.4%</b>	<b>60.3%</b>	<b>14.6%</b>	<b>3.1%</b>	<b>100.0%</b>
Monroe	95	43	263	81	4	<b>486</b>	67	34	277	67	14	<b>459</b>
	19.5%	8.8%	54.1%	16.7%	0.8%	<b>100.0%</b>	14.6%	7.4%	60.3%	14.6%	3.1%	<b>100.0%</b>
<b>17 (Ft. Lauderdale)</b>	<b>456</b>	<b>174</b>	<b>2,699</b>	<b>239</b>	<b>17</b>	<b>3,585</b>	<b>503</b>	<b>183</b>	<b>2,494</b>	<b>460</b>	<b>22</b>	<b>3,662</b>
	<b>12.7%</b>	<b>4.9%</b>	<b>75.3%</b>	<b>6.7%</b>	<b>0.5%</b>	<b>100.0%</b>	<b>13.7%</b>	<b>5.0%</b>	<b>68.1%</b>	<b>12.6%</b>	<b>0.6%</b>	<b>100.0%</b>
Broward	456	174	2,699	239	17	<b>3,585</b>	503	183	2,494	460	22	<b>3,662</b>
	12.7%	4.9%	75.3%	6.7%	0.5%	<b>100.0%</b>	13.7%	5.0%	68.1%	12.6%	0.6%	<b>100.0%</b>
<b>18 (Sanford)</b>	<b>711</b>	<b>399</b>	<b>2,360</b>	<b>814</b>	<b>35</b>	<b>4,319</b>	<b>738</b>	<b>377</b>	<b>2,555</b>	<b>685</b>	<b>21</b>	<b>4,376</b>
	<b>16.5%</b>	<b>9.2%</b>	<b>54.6%</b>	<b>18.8%</b>	<b>0.8%</b>	<b>100.0%</b>	<b>16.9%</b>	<b>8.6%</b>	<b>58.4%</b>	<b>15.7%</b>	<b>0.5%</b>	<b>100.0%</b>
Brevard	429	267	1,378	464	15	<b>2,553</b>	505	266	1,519	552	11	<b>2,853</b>
	16.8%	10.5%	54.0%	18.2%	0.6%	<b>100.0%</b>	17.7%	9.3%	53.2%	19.3%	0.4%	<b>100.0%</b>

**Table 3  
Sanction Imposed By Judicial Circuit and County**

Circuit/County	FY 2015-2016 Sentence Dates <sup>1</sup>						FY2016-2017 Sentence Dates <sup>2</sup>					
	State Prison	Comm. Control	Probation	County Jail	Other Sentence	Total	State Prison	Comm. Control	Probation	County Jail	Other Sentence	Total
Seminole	282 16.0%	132 7.5%	982 55.6%	350 19.8%	20 1.1%	<b>1,766</b> <b>100.0%</b>	233 15.3%	111 7.3%	1,036 68.0%	133 8.7%	10 0.7%	<b>1,523</b> <b>100.0%</b>
<b>19 (Ft. Pierce)</b>	<b>793</b> <b>28.4%</b>	<b>100</b> <b>3.6%</b>	<b>1,165</b> <b>41.8%</b>	<b>725</b> <b>26.0%</b>	<b>5</b> <b>0.2%</b>	<b>2,788</b> <b>100.0%</b>	<b>712</b> <b>26.1%</b>	<b>120</b> <b>4.4%</b>	<b>1,149</b> <b>42.2%</b>	<b>742</b> <b>27.2%</b>	<b>1</b> <b>0.0%</b>	<b>2,724</b> <b>100.0%</b>
Indian River	128 21.9%	40 6.8%	248 42.4%	165 28.2%	4 0.7%	<b>585</b> <b>100.0%</b>	118 20.8%	63 11.1%	233 41.2%	152 26.9%	0 0.0%	<b>566</b> <b>100.0%</b>
Martin	169 29.1%	10 1.7%	255 43.9%	147 25.3%	0 0.0%	<b>581</b> <b>100.0%</b>	159 27.7%	12 2.1%	236 41.2%	166 29.0%	0 0.0%	<b>573</b> <b>100.0%</b>
Okeechobee	105 32.3%	8 2.5%	140 43.1%	71 21.8%	1 0.3%	<b>325</b> <b>100.0%</b>	87 28.3%	11 3.6%	134 43.6%	75 24.4%	0 0.0%	<b>307</b> <b>100.0%</b>
St. Lucie	391 30.1%	42 3.2%	522 40.2%	342 26.4%	0 0.0%	<b>1,297</b> <b>100.0%</b>	348 27.2%	34 2.7%	546 42.7%	349 27.3%	1 0.1%	<b>1,278</b> <b>100.0%</b>
<b>20 (Ft. Myers)</b>	<b>786</b> <b>18.0%</b>	<b>215</b> <b>4.9%</b>	<b>2,274</b> <b>52.2%</b>	<b>1,078</b> <b>24.8%</b>	<b>2</b> <b>0.0%</b>	<b>4,355</b> <b>100.0%</b>	<b>722</b> <b>16.1%</b>	<b>193</b> <b>4.3%</b>	<b>2,400</b> <b>53.6%</b>	<b>1,164</b> <b>26.0%</b>	<b>1</b> <b>0.0%</b>	<b>4,480</b> <b>100.0%</b>
Charlotte	140 21.3%	32 4.9%	287 43.6%	199 30.2%	0 0.0%	<b>658</b> <b>100.0%</b>	137 17.4%	33 4.2%	381 48.3%	238 30.2%	0 0.0%	<b>789</b> <b>100.0%</b>
Collier	164 17.1%	57 5.9%	480 50.1%	258 26.9%	0 0.0%	<b>959</b> <b>100.0%</b>	134 15.2%	41 4.6%	481 54.5%	227 25.7%	0 0.0%	<b>883</b> <b>100.0%</b>
Glades	13 24.5%	1 1.9%	28 52.8%	11 20.8%	0 0.0%	<b>53</b> <b>100.0%</b>	19 28.8%	2 3.0%	36 54.5%	9 13.6%	0 0.0%	<b>66</b> <b>100.0%</b>
Hendry	22 13.7%	8 5.0%	86 53.4%	45 28.0%	0 0.0%	<b>161</b> <b>100.0%</b>	42 17.1%	9 3.7%	147 59.8%	48 19.5%	0 0.0%	<b>246</b> <b>100.0%</b>
Lee	447 17.7%	117 4.6%	1,393 55.2%	565 22.4%	2 0.1%	<b>2,524</b> <b>100.0%</b>	390 15.6%	108 4.3%	1,355 54.3%	642 25.7%	1 0.0%	<b>2,496</b> <b>100.0%</b>
<b>Statewide</b>	<b>16,398</b> <b>21.9%</b>	<b>3,846</b> <b>5.1%</b>	<b>35,406</b> <b>47.4%</b>	<b>18,673</b> <b>25.0%</b>	<b>386</b> <b>0.5%</b>	<b>74,709</b> <b>100.0%</b>	<b>16,721</b> <b>20.6%</b>	<b>4,184</b> <b>5.1%</b>	<b>38,691</b> <b>47.6%</b>	<b>21,143</b> <b>26.0%</b>	<b>616</b> <b>0.8%</b>	<b>81,355</b> <b>100.0%</b>

Note: County jail includes those sentenced to time served; prison includes those sentenced to life.

<sup>1</sup> Offense dates on or after October 1, 2014.

<sup>2</sup> Offense dates on or after October 1, 2015.

**Table 3.A  
Sanction Imposed By Judicial Circuit**

Circuit/County	FY 2015-2016 Sentence Dates <sup>1</sup>						FY2016-2017 Sentence Dates <sup>2</sup>					
	State Prison	Comm. Control	Probation	County Jail	Other Sentence	Total	State Prison	Comm. Control	Probation	County Jail	Other Sentence	Total
01 (Pensacola)	989 20.5%	392 8.1%	2,417 50.1%	981 20.3%	46 1.0%	4,825 100.0%	925 17.4%	422 7.9%	2,728 51.2%	1,183 22.2%	65 1.2%	5,323 100.0%
02 (Tallahassee)	431 22.4%	100 5.2%	1,045 54.3%	336 17.4%	14 0.7%	1,926 100.0%	420 19.8%	114 5.4%	1,136 53.6%	440 20.8%	8 0.4%	2,118 100.0%
03 (Lake City)	333 23.2%	165 11.5%	767 53.3%	113 7.9%	60 4.2%	1,438 100.0%	376 24.5%	189 12.3%	806 52.5%	105 6.8%	58 3.8%	1,534 100.0%
04 (Jacksonville)	1,581 49.6%	41 1.3%	618 19.4%	949 29.7%	1 0.0%	3,190 100.0%	1,470 34.1%	69 1.6%	1,263 29.3%	1,511 35.0%	0 0.0%	4,313 100.0%
05 (Tavares)	1,175 25.7%	211 4.6%	2,246 49.1%	896 19.6%	43 0.9%	4,571 100.0%	1,590 26.0%	293 4.8%	2,459 40.3%	1,700 27.9%	62 1.0%	6,104 100.0%
06 (Clearwater)	1,304 18.0%	205 2.8%	2,773 38.4%	2,922 40.4%	22 0.3%	7,226 100.0%	1,219 17.3%	128 1.8%	2,663 37.7%	2,972 42.1%	82 1.2%	7,064 100.0%
07 (Daytona)	992 27.2%	203 5.6%	2,027 55.6%	409 11.2%	13 0.4%	3,644 100.0%	978 22.9%	219 5.1%	2,475 58.0%	558 13.1%	38 0.9%	4,268 100.0%
08 (Gainesville)	602 29.5%	96 4.7%	904 44.3%	409 20.0%	31 1.5%	2,042 100.0%	750 31.7%	90 3.8%	1,053 44.5%	419 17.7%	52 2.2%	2,364 100.0%
09 (Orlando)	1,474 19.8%	196 2.6%	3,067 41.3%	2,681 36.1%	13 0.2%	7,431 100.0%	1,378 18.4%	225 3.0%	3,196 42.7%	2,675 35.8%	3 0.0%	7,477 100.0%
10 (Bartow)	913 24.3%	266 7.1%	1,939 51.6%	621 16.5%	22 0.6%	3,761 100.0%	1,058 24.6%	281 6.5%	2,289 53.1%	667 15.5%	14 0.3%	4,309 100.0%

**Table 3.A  
Sanction Imposed By Judicial Circuit**

Circuit/County	FY 2015-2016 Sentence Dates <sup>1</sup>						FY2016-2017 Sentence Dates <sup>2</sup>					
	State Prison	Comm. Control	Probation	County Jail	Other Sentence	Total	State Prison	Comm. Control	Probation	County Jail	Other Sentence	Total
<b>11 (Miami)</b>	583 13.5%	244 5.7%	1,966 45.6%	1,522 35.3%	1 0.0%	4,316 100.0%	492 10.3%	252 5.3%	2,374 49.7%	1,657 34.7%	0 0.0%	4,775 100.0%
<b>12 (Sarasota)</b>	690 20.5%	244 7.2%	1,570 46.6%	861 25.6%	4 0.1%	3,369 100.0%	693 19.9%	243 7.0%	1,727 49.6%	813 23.4%	4 0.1%	3,480 100.0%
<b>13 (Tampa)</b>	1,063 18.8%	284 5.0%	2,759 48.8%	1,530 27.1%	17 0.3%	5,653 100.0%	1,099 18.5%	353 5.9%	2,943 49.5%	1,522 25.6%	26 0.4%	5,943 100.0%
<b>14 (Panama City)</b>	751 30.6%	232 9.5%	1,395 56.9%	46 1.9%	27 1.1%	2,451 100.0%	774 27.6%	345 12.3%	1,498 53.4%	70 2.5%	117 4.2%	2,804 100.0%
<b>15 (West Palm Beach)</b>	676 20.3%	36 1.1%	1,152 34.6%	1,460 43.8%	9 0.3%	3,333 100.0%	757 20.0%	54 1.4%	1,206 31.9%	1,733 45.9%	28 0.7%	3,778 100.0%
<b>16 (Key West)</b>	95 19.5%	43 8.8%	263 54.1%	81 16.7%	4 0.8%	486 100.0%	67 14.6%	34 7.4%	277 60.3%	67 14.6%	14 3.1%	459 100.0%
<b>17 (Ft. Lauderdale)</b>	456 12.7%	174 4.9%	2,699 75.3%	239 6.7%	17 0.5%	3,585 100.0%	503 13.7%	183 5.0%	2,494 68.1%	460 12.6%	22 0.6%	3,662 100.0%
<b>18 (Sanford)</b>	711 16.5%	399 9.2%	2,360 54.6%	814 18.8%	35 0.8%	4,319 100.0%	738 16.9%	377 8.6%	2,555 58.4%	685 15.7%	21 0.5%	4,376 100.0%
<b>19 (Ft. Pierce)</b>	793 28.4%	100 3.6%	1,165 41.8%	725 26.0%	5 0.2%	2,788 100.0%	712 26.1%	120 4.4%	1,149 42.2%	742 27.2%	1 0.0%	2,724 100.0%
<b>20 (Ft. Myers)</b>	786 18.0%	215 4.9%	2,274 52.2%	1,078 24.8%	2 0.0%	4,355 100.0%	722 16.1%	193 4.3%	2,400 53.6%	1,164 26.0%	1 0.0%	4,480 100.0%
<b>Statewide</b>	16,398 21.9%	3,846 5.1%	35,406 47.4%	18,673 25.0%	386 0.5%	74,709 100.0%	16,721 20.6%	4,184 5.1%	38,691 47.6%	21,143 26.0%	616 0.8%	81,355 100.0%

Note: County jail includes those sentenced to time served; prison includes those sentenced to life.

<sup>1</sup> Offense dates on or after October 1, 2014.

<sup>2</sup> Offense dates on or after October 1, 2015.

**Table 4  
Offense Types by Sanction Imposed**

Offense Type		FY2015-2016 Sentence Dates <sup>1</sup>						FY2016-2017 Sentence Dates <sup>2</sup>					
		State Prison	Comm. Control	Probation	County Jail	Other	Total	State Prison	Comm. Control	Probation	County Jail	Other	Total
Murder/Manslaughter	Attempt	98	2	3	0	0	103	80	4	5	0	0	89
	Complete	114	6	5	0	0	125	128	5	4	2	0	139
Sexual/Lewd Behavior	Attempt	43	1	10	1	0	55	38	0	8	1	0	47
	Complete	444	36	156	11	1	648	469	31	137	15	1	653
Robbery	Attempt	104	16	50	24	0	194	102	17	65	16	0	200
	Complete	898	130	344	119	4	1,495	845	127	383	144	7	1,506
Violent,Other	Attempt	44	4	38	7	0	93	52	7	35	6	1	101
	Complete	2,639	671	5,553	1,753	50	10,666	2,711	704	6,169	1,948	86	11,618
Burglary	Attempt	153	21	104	49	1	328	109	8	117	46	1	281
	Complete	2,581	512	2,807	1,012	42	6,954	2,718	552	3,236	1,237	57	7,800
Property Theft/Fraud/Damage	Attempt	5	2	16	2	0	25	3	1	11	3	0	18
	Complete	2,686	837	9,940	5,458	82	19,003	2,664	825	10,344	5,889	167	19,889
Drugs	Attempt	44	10	107	70	0	231	37	11	82	50	3	183
	Complete	3,860	1,042	11,480	7,001	129	23,512	4,005	1,219	12,787	8,301	211	26,523
Weapons	Attempt	6	2	4	2	0	14	11	0	10	2	0	23
	Complete	1,067	170	1,141	456	16	2,850	1,206	213	1,393	563	18	3,393
Other	Attempt	7	4	27	12	1	51	24	5	48	21	0	98
	Complete	1,606	380	3,621	2,699	60	8,366	1,519	455	3,857	2,902	64	8,797
<b>Total</b>		<b>16,399</b>	<b>3,846</b>	<b>35,406</b>	<b>18,676</b>	<b>386</b>	<b>74,713</b>	<b>16,721</b>	<b>4,184</b>	<b>38,691</b>	<b>21,146</b>	<b>616</b>	<b>81,358</b>

Note: County jail includes those sentenced to time served; prison includes those sentenced to life.

<sup>1</sup> Offense dates on or after October 1, 2014.

<sup>2</sup> Offense dates on or after October 1, 2015.

**Table 5  
Sanction Imposed by Offense Severity Level**

Offense Severity Level	FY2015-2016 Sentence Dates <sup>1</sup>						FY2016-2017 Sentence Dates <sup>2</sup>					
	State Prison	Comm. Control	Probation	County Jail	Other Sentence	Total	State Prison	Comm. Control	Probation	County Jail	Other Sentence	Total
<b>1</b>	947 8.8%	403 3.7%	4,981 46.2%	4,363 40.5%	76 0.7%	<b>10,770</b> <b>100.0%</b>	851 7.7%	384 3.5%	5,136 46.5%	4,582 41.5%	90 0.8%	<b>11,043</b> <b>100.0%</b>
<b>2</b>	769 8.9%	311 3.6%	5,084 58.8%	2,429 28.1%	46 0.5%	<b>8,639</b> <b>100.0%</b>	687 7.7%	327 3.7%	5,236 58.7%	2,579 28.9%	84 0.9%	<b>8,913</b> <b>100.0%</b>
<b>3</b>	1,840 9.2%	841 4.2%	10,565 53.0%	6,553 32.9%	119 0.6%	<b>19,918</b> <b>100.0%</b>	1,995 8.7%	1,033 4.5%	11,868 51.8%	7,798 34.1%	197 0.9%	<b>22,891</b> <b>100.0%</b>
<b>4</b>	2,093 22.1%	532 5.6%	4,582 48.4%	2,206 23.3%	56 0.6%	<b>9,469</b> <b>100.0%</b>	2,235 20.6%	570 5.3%	5,363 49.5%	2,566 23.7%	97 0.9%	<b>10,831</b> <b>100.0%</b>
<b>5</b>	3,772 32.5%	687 5.9%	5,040 43.4%	2,071 17.8%	43 0.4%	<b>11,613</b> <b>100.0%</b>	3,892 31.5%	723 5.9%	5,284 42.8%	2,372 19.2%	80 0.6%	<b>12,351</b> <b>100.0%</b>
<b>6</b>	2,076 31.9%	475 7.3%	3,278 50.3%	659 10.1%	24 0.4%	<b>6,512</b> <b>100.0%</b>	1,977 28.0%	480 6.8%	3,813 54.0%	740 10.5%	45 0.6%	<b>7,055</b> <b>100.0%</b>
<b>7</b>	3,235 57.5%	416 7.4%	1,609 28.6%	349 6.2%	17 0.3%	<b>5,626</b> <b>100.0%</b>	3,353 55.9%	472 7.9%	1,690 28.2%	469 7.8%	18 0.3%	<b>6,002</b> <b>100.0%</b>
<b>8</b>	836 71.2%	111 9.5%	191 16.3%	33 2.8%	3 0.3%	<b>1,174</b> <b>100.0%</b>	902 72.5%	108 8.7%	211 17.0%	20 1.6%	3 0.2%	<b>1,244</b> <b>100.0%</b>
<b>9</b>	689 83.0%	64 7.7%	64 7.7%	12 1.4%	1 0.1%	<b>830</b> <b>100.0%</b>	663 79.0%	80 9.5%	78 9.3%	17 2.0%	1 0.1%	<b>839</b> <b>100.0%</b>
<b>10</b>	142 87.7%	6 3.7%	12 7.4%	1 0.6%	1 0.6%	<b>162</b> <b>100.0%</b>	166 87.8%	7 3.7%	12 6.3%	3 1.6%	1 0.5%	<b>189</b> <b>100.0%</b>
<b>Total</b>	<b>16,399</b> <b>21.9%</b>	<b>3,846</b> <b>5.1%</b>	<b>35,406</b> <b>47.4%</b>	<b>18,676</b> <b>25.0%</b>	<b>386</b> <b>0.5%</b>	<b>74,713</b> <b>100.0%</b>	<b>16,721</b> <b>20.6%</b>	<b>4,184</b> <b>5.1%</b>	<b>38,691</b> <b>47.6%</b>	<b>21,146</b> <b>26.0%</b>	<b>616</b> <b>0.8%</b>	<b>81,358</b> <b>100.0%</b>

Note: County jail includes those sentenced to time served; prison includes those sentenced to life.

<sup>1</sup> Offense dates on or after October 1, 2014.

<sup>2</sup> Offense dates on or after October 1, 2015.

**Table 6  
State Prison Sentence Length by Offense Severity Level**

Offense Severity Level	FY2015-2016 Sentence Dates <sup>1</sup>					FY2016-2017 Sentence Dates <sup>2</sup>				
	LE 2*	GT 2-LE 4*	GT 4-LE 10*	GT 10*	Total	LE 2*	GT 2-LE 4*	GT 4-LE 10*	GT 10*	Total
<b>1</b>	714 75.4%	162 17.1%	65 6.9%	6 0.6%	<b>947</b> <b>100.0%</b>	657 77.3%	137 16.0%	53 6.2%	4 0.5%	<b>851</b> <b>100.0%</b>
<b>2</b>	548 71.3%	178 23.1%	41 5.3%	2 0.3%	<b>769</b> <b>100.0%</b>	531 77.3%	116 16.9%	38 5.5%	2 0.3%	<b>687</b> <b>100.0%</b>
<b>3</b>	1,383 75.2%	356 19.3%	97 5.3%	4 0.2%	<b>1,840</b> <b>100.0%</b>	1,546 77.5%	341 17.1%	100 5.0%	8 0.4%	<b>1,995</b> <b>100.0%</b>
<b>4</b>	1,319 63.0%	542 25.9%	207 9.9%	25 1.2%	<b>2,093</b> <b>100.0%</b>	1,463 65.5%	560 25.1%	196 8.8%	16 0.7%	<b>2,235</b> <b>100.0%</b>
<b>5</b>	2,105 55.8%	1,156 30.6%	440 11.7%	71 1.9%	<b>3,772</b> <b>100.0%</b>	2,054 52.8%	1,319 33.9%	459 11.8%	60 1.5%	<b>3,892</b> <b>100.0%</b>
<b>6</b>	1,023 49.3%	586 28.2%	373 18.0%	94 4.5%	<b>2,076</b> <b>100.0%</b>	986 49.9%	552 27.9%	368 18.6%	71 3.6%	<b>1,977</b> <b>100.0%</b>
<b>7</b>	819 25.3%	1,219 37.7%	949 29.3%	248 7.7%	<b>3,235</b> <b>100.0%</b>	917 27.3%	1,248 37.2%	999 29.8%	189 5.6%	<b>3,353</b> <b>100.0%</b>
<b>8</b>	106 12.7%	180 21.5%	375 44.9%	175 20.9%	<b>836</b> <b>100.0%</b>	121 13.4%	205 22.7%	414 45.9%	162 18.0%	<b>902</b> <b>100.0%</b>
<b>9</b>	62 9.0%	102 14.8%	272 39.5%	253 36.7%	<b>689</b> <b>100.0%</b>	83 12.5%	113 17.0%	250 37.7%	217 32.7%	<b>663</b> <b>100.0%</b>
<b>10</b>	16 11.3%	5 3.5%	24 16.9%	97 68.3%	<b>142</b> <b>100.0%</b>	16 9.6%	6 3.6%	43 25.9%	101 60.8%	<b>166</b> <b>100.0%</b>
<b>Total</b>	<b>8,095</b> 49.4%	<b>4,486</b> 27.4%	<b>2,843</b> 17.3%	<b>975</b> 5.9%	<b>16,399</b> <b>100.0%</b>	<b>8,374</b> 50.1%	<b>4,597</b> 27.5%	<b>2,920</b> 17.5%	<b>830</b> 5.0%	<b>16,721</b> <b>100.0%</b>

\* LE = Less than or equal to; GT = Greater than

<sup>1</sup> Offense dates on or after October 1, 2014.

<sup>2</sup> Offense dates on or after October 1, 2015.

**Table 7  
Number of Prior Offenses\***

Prior Offenses	FY2015-2016 Sentence Dates <sup>1</sup>		FY2016-2017 Sentence Dates <sup>2</sup>	
	Number	Percent	Number	Percent
None	15,127	20.2%	16,923	20.8%
Misdemeanor Only	19,279	25.8%	20,798	25.6%
One Felony	14,617	19.6%	15,722	19.3%
Two Felonies	10,285	13.8%	11,378	14.0%
Three Felonies	6,672	8.9%	7,322	9.0%
Four Felonies	4,194	5.6%	4,467	5.5%
Five Felonies	2,304	3.1%	2,371	2.9%
Six Felonies	1,188	1.6%	1,237	1.5%
Seven or More Felonies	1,047	1.4%	1,140	1.4%
<b>Total</b>	<b>74,713</b>	<b>100.0%</b>	<b>81,358</b>	<b>100.0%</b>

\* As indicated on the scoresheet.

**Table 8  
Number of Additional Offenses\***

Additional Offenses	FY2015-2016 Sentence Dates <sup>1</sup>		FY2016-2017 Sentence Dates <sup>2</sup>	
	Number	Percent	Number	Percent
None	35,710	47.8%	37,415	46.0%
Misdemeanor Only	19,108	25.6%	21,585	26.5%
One Felony	12,950	17.3%	14,228	17.5%
Two Felonies	3,996	5.3%	4,638	5.7%
Three Felonies	1,621	2.2%	1,847	2.3%
Four Felonies	654	0.9%	736	0.9%
Five Felonies	299	0.4%	435	0.5%
Six Felonies	153	0.2%	180	0.2%
Seven or More Felonies	222	0.3%	294	0.4%
<b>Total</b>	<b>74,713</b>	<b>100.0%</b>	<b>81,358</b>	<b>100.0%</b>

\* As indicated on the scoresheet.

<sup>1</sup> Offense dates on or after October 1, 2014.

<sup>2</sup> Offense dates on or after October 1, 2015.



**Table 9  
Prior Felony Record\* and Sanction Imposed**

Number of Prior Felonies	FY2015-2016 Sentence Dates <sup>1</sup>						FY2016-2017 Sentence Dates <sup>2</sup>					
	State Prison	Comm. Control	Probation	County Jail	Other Sentence	Total	State Prison	Comm. Control	Probation	County Jail	Other Sentence	Total
None	3,775 11.0%	1,991 5.8%	22,182 64.5%	6,239 18.1%	219 0.6%	<b>34,406</b> <b>100.0%</b>	3,918 10.4%	2,118 5.6%	24,065 63.8%	7,231 19.2%	389 1.0%	<b>37,721</b> <b>100.0%</b>
One	2,943 20.1%	764 5.2%	6,187 42.3%	4,635 31.7%	88 0.6%	<b>14,617</b> <b>100.0%</b>	2,987 19.0%	814 5.2%	6,725 42.8%	5,092 32.4%	104 0.7%	<b>15,722</b> <b>100.0%</b>
Two	3,058 29.7%	507 4.9%	3,419 33.2%	3,261 31.7%	40 0.4%	<b>10,285</b> <b>100.0%</b>	3,088 27.1%	551 4.8%	3,898 34.3%	3,783 33.2%	58 0.5%	<b>11,378</b> <b>100.0%</b>
Three	2,443 36.6%	286 4.3%	1,882 28.2%	2,042 30.6%	19 0.3%	<b>6,672</b> <b>100.0%</b>	2,534 34.6%	347 4.7%	2,063 28.2%	2,346 32.0%	32 0.4%	<b>7,322</b> <b>100.0%</b>
Four	1,846 44.0%	160 3.8%	936 22.3%	1,244 29.7%	8 0.2%	<b>4,194</b> <b>100.0%</b>	1,828 40.9%	185 4.1%	1,064 23.8%	1,369 30.6%	21 0.5%	<b>4,467</b> <b>100.0%</b>
Five	1,137 49.3%	75 3.3%	449 19.5%	636 27.6%	7 0.3%	<b>2,304</b> <b>100.0%</b>	1,128 47.6%	77 3.2%	495 20.9%	665 28.0%	6 0.3%	<b>2,371</b> <b>100.0%</b>
Six	631 53.1%	28 2.4%	204 17.2%	324 27.3%	1 0.1%	<b>1,188</b> <b>100.0%</b>	626 50.6%	52 4.2%	219 17.7%	337 27.2%	3 0.2%	<b>1,237</b> <b>100.0%</b>
Seven or More	566 54.1%	35 3.3%	147 14.0%	295 28.2%	4 0.4%	<b>1,047</b> <b>100.0%</b>	612 53.7%	40 3.5%	162 14.2%	323 28.3%	3 0.3%	<b>1,140</b> <b>100.0%</b>
<b>Total</b>	<b>16,399</b> <b>21.9%</b>	<b>3,846</b> <b>5.1%</b>	<b>35,406</b> <b>47.4%</b>	<b>18,676</b> <b>25.0%</b>	<b>386</b> <b>0.5%</b>	<b>74,713</b> <b>100.0%</b>	<b>16,721</b> <b>20.6%</b>	<b>4,184</b> <b>5.1%</b>	<b>38,691</b> <b>47.6%</b>	<b>21,146</b> <b>26.0%</b>	<b>616</b> <b>0.8%</b>	<b>81,358</b> <b>100.0%</b>

\* As indicated on the scoresheet

Note: County jail includes those sentenced to time served; prison includes those sentenced to life.

<sup>1</sup> Offense dates on or after October 1, 2014.

<sup>2</sup> Offense dates on or after October 1, 2015.

**Table 10**  
**Additional Offenses\* and Sanction Imposed**

Number of Additional Felonies	FY2015-2016 Sentence Dates <sup>1</sup>						FY2016-2017 Sentence Dates <sup>2</sup>					
	State Prison	Comm. Control	Probation	County Jail	Other Sentence	Total	State Prison	Comm. Control	Probation	County Jail	Other Sentence	Total
None	8,306	2,513	28,159	15,537	303	<b>54,818</b>	8,102	2,689	30,388	17,335	486	<b>59,000</b>
	15.2%	4.6%	51.4%	28.3%	0.6%	<b>100.0%</b>	13.7%	4.6%	51.5%	29.4%	0.8%	<b>100.0%</b>
One	4,129	851	5,426	2,484	60	<b>12,950</b>	4,272	962	6,045	2,858	91	<b>14,228</b>
	31.9%	6.6%	41.9%	19.2%	0.5%	<b>100.0%</b>	30.0%	6.8%	42.5%	20.1%	0.6%	<b>100.0%</b>
Two	2,022	288	1,197	472	17	<b>3,996</b>	2,104	314	1,527	665	28	<b>4,638</b>
	50.6%	7.2%	30.0%	11.8%	0.4%	<b>100.0%</b>	45.4%	6.8%	32.9%	14.3%	0.6%	<b>100.0%</b>
Three	974	122	393	128	4	<b>1,621</b>	1,069	124	452	199	3	<b>1,847</b>
	60.1%	7.5%	24.2%	7.9%	0.2%	<b>100.0%</b>	57.9%	6.7%	24.5%	10.8%	0.2%	<b>100.0%</b>
Four	458	42	125	28	1	<b>654</b>	482	46	148	57	3	<b>736</b>
	70.0%	6.4%	19.1%	4.3%	0.2%	<b>100.0%</b>	65.5%	6.3%	20.1%	7.7%	0.4%	<b>100.0%</b>
Five	197	16	67	19	0	<b>299</b>	314	22	74	24	1	<b>435</b>
	65.9%	5.4%	22.4%	6.4%	0.0%	<b>100.0%</b>	72.2%	5.1%	17.0%	5.5%	0.2%	<b>100.0%</b>
Six	122	8	19	4	0	<b>153</b>	148	4	22	5	1	<b>180</b>
	79.7%	5.2%	12.4%	2.6%	0.0%	<b>100.0%</b>	82.2%	2.2%	12.2%	2.8%	0.6%	<b>100.0%</b>
Seven or More	191	6	20	4	1	<b>222</b>	230	23	35	3	3	<b>294</b>
	86.0%	2.7%	9.0%	1.8%	0.5%	<b>100.0%</b>	78.2%	7.8%	11.9%	1.0%	1.0%	<b>100.0%</b>
<b>Total</b>	<b>16,399</b>	<b>3,846</b>	<b>35,406</b>	<b>18,676</b>	<b>386</b>	<b>74,713</b>	<b>16,721</b>	<b>4,184</b>	<b>38,691</b>	<b>21,146</b>	<b>616</b>	<b>81,358</b>
	<b>21.9%</b>	<b>5.1%</b>	<b>47.4%</b>	<b>25.0%</b>	<b>0.5%</b>	<b>100.0%</b>	<b>20.6%</b>	<b>5.1%</b>	<b>47.6%</b>	<b>26.0%</b>	<b>0.8%</b>	<b>100.0%</b>

\* As indicated on the scoresheet.

Note: County jail includes those sentenced to time served; prison includes those sentenced to life.

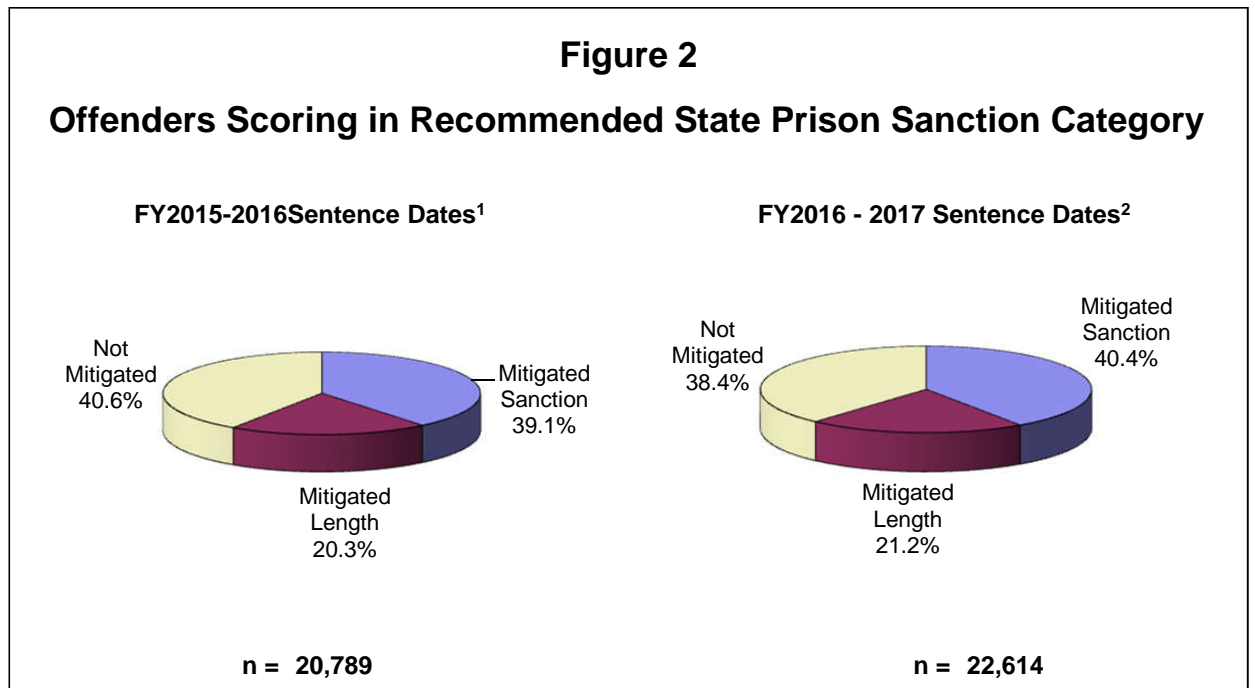
<sup>1</sup> Offense dates on or after October 1, 2014.

<sup>2</sup> Offense dates on or after October 1, 2015.

**Table 11**  
**Mitigation Rates\* Among Offenders Scoring in Recommended State**  
**Prison Sanction Category**

Category	FY2015-2016 Sentence Dates <sup>1</sup>		FY2016-2017 Sentence Dates <sup>2</sup>	
	Number / Percent	Average Mitigated Length in Months	Number / Percent	Average Mitigated Length in Months
Mitigated Total	12,346 59.4%		13,928 61.6%	
Mitigated Sanction	8,133 39.1%		9,141 40.4%	
Mitigated Length	4,213 20.3%	24.9	4,787 21.2%	22.9
Not Mitigated	8,443 40.6%		8,686 38.4%	
<b>Total</b>	<b>20,789</b> <b>100.0%</b>		<b>22,614</b> <b>100.0%</b>	

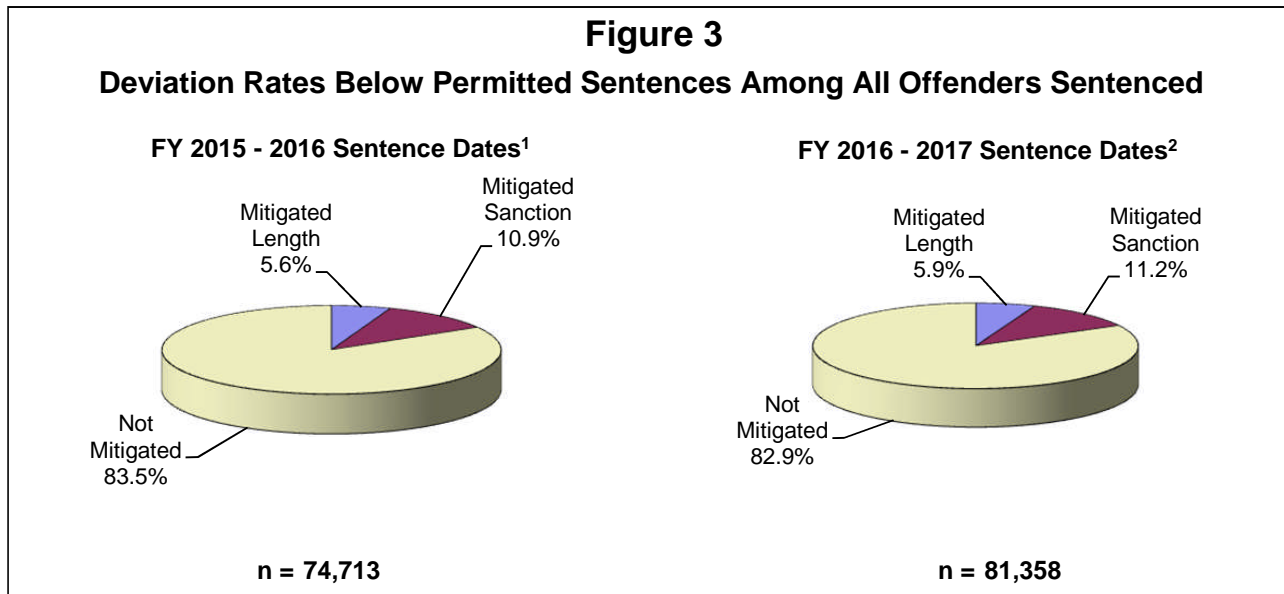
\* Mitigation of sanction occurs when an offender does not receive a prison sanction although a prison sanction is mandated by the Criminal Punishment Code. Mitigated length occurs when an offender receives a prison sentence below the 25% permissible discretion existing within the Criminal Punishment Code. This total rate includes both mitigated sanction and mitigated length sentences. Offenders scoring to state prison who receive a Drug Offender Probation sentence are not counted as mitigated.



\* Total points exceeding 44.0

<sup>1</sup> Offense dates on or after October 1, 2014.

<sup>2</sup> Offense dates on or after October 1, 2015.



### Table 12

#### Mitigated Sanction Rates\* By Judicial Circuit

Judicial Circuit	FY2015-2016 Sentence Dates <sup>1</sup>			FY2016-2017 Sentence Dates <sup>2</sup>		
	Scoresheets Exceeding 44.0 Total Points	Scoresheets Mitigated	Mitigation Rate	Scoresheets Exceeding 44.0 Total Points	Scoresheets Mitigated	Mitigation Rate
01- Pensacola	1,108	360	32.5%	1,063	347	32.6%
02- Tallahassee	651	294	45.2%	733	373	50.9%
03- Lake City	524	276	52.7%	471	205	43.5%
04- Jacksonville	1,243	218	17.5%	1,370	355	25.9%
05- Tavares	1,270	318	25.0%	1,754	459	26.2%
06- Clearwater	1,658	520	31.4%	1,689	631	37.4%
07- Daytona	676	253	37.4%	923	314	34.0%
08- Gainesville	607	183	30.1%	718	197	27.4%
09- Orlando	1,897	655	34.5%	1,961	829	42.3%
10- Bartow	867	193	22.3%	1,052	226	21.5%
11- Miami	1,761	1,202	68.3%	1,874	1,408	75.1%
12- Sarasota	824	221	26.8%	866	272	31.4%
13- Tampa	2,150	1,168	54.3%	2,337	1,281	54.8%
14- Panama City	745	265	35.6%	787	267	33.9%
15- West Palm Beach	1,172	576	49.1%	1,327	650	49.0%
16- Key West	158	73	46.2%	114	66	57.9%
17- Ft. Lauderdale	937	462	49.3%	1,096	399	36.4%
18- Sanford	990	413	41.7%	1,023	390	38.1%
19- Ft. Pierce	594	154	25.9%	516	109	21.1%
20- Ft. Myers	957	329	34.4%	940	363	38.6%
<b>Statewide</b>	<b>20,789</b>	<b>8,133</b>	<b>39.1%</b>	<b>22,614</b>	<b>9,141</b>	<b>40.4%</b>

\* Mitigation of sanction occurs when an offender does not receive a prison sanction although a prison sanction is mandated by the Criminal Punishment Code. Those receiving Drug Offender Probation are not included.

<sup>1</sup> Offense dates on or after October 1, 2014.

<sup>2</sup> Offense dates on or after October 1, 2015.

**Table 13**

**Mitigated Sanction Rates and Mitigated Length Rates\* By Judicial Circuit**

Judicial Circuit	FY2015-2016 Sentence Dates <sup>1</sup>			FY2016-2017 Sentence Dates <sup>2</sup>		
	Scoresheets Exceeding 44.0 Total Points	Scoresheets Mitigated	Mitigation Rate	Scoresheets Exceeding 44.0 Total Points	Scoresheets Mitigated	Mitigation Rate
01- Pensacola	1,108	455	41.1%	1,063	456	42.9%
02- Tallahassee	651	510	78.3%	733	589	80.4%
03- Lake City	524	399	76.1%	471	304	64.5%
04- Jacksonville	1,243	487	39.2%	1,370	671	49.0%
05- Tavares	1,270	525	41.3%	1,754	773	44.1%
06- Clearwater	1,658	970	58.5%	1,689	1,106	65.5%
07- Daytona	676	391	57.8%	923	576	62.4%
08- Gainesville	607	346	57.0%	718	411	57.2%
09- Orlando	1,897	1,051	55.4%	1,961	1,235	63.0%
10- Bartow	867	285	32.9%	1,052	370	35.2%
11- Miami	1,761	1,564	88.8%	1,874	1,713	91.4%
12- Sarasota	824	291	35.3%	866	361	41.7%
13- Tampa	2,150	1,807	84.0%	2,337	1,987	85.0%
14- Panama City	745	442	59.3%	787	463	58.8%
15- West Palm Beach	1,172	934	79.7%	1,327	1,056	79.6%
16- Key West	158	97	61.4%	114	80	70.2%
17- Ft. Lauderdale	937	581	62.0%	1,096	564	51.5%
18- Sanford	990	564	57.0%	1,023	583	57.0%
19- Ft. Pierce	594	217	36.5%	516	174	33.7%
20- Ft. Myers	957	430	44.9%	940	456	48.5%
<b>Statewide</b>	<b>20,789</b>	<b>12,346</b>	<b>59.4%</b>	<b>22,614</b>	<b>13,928</b>	<b>61.6%</b>

\* Mitigation of sanction occurs when an offender does not receive a prison sanction although a prison sanction is mandated by the Criminal Punishment Code. Those receiving Drug Offender Probation are not included. Mitigated length occurs when an offender receives a prison sentence below the 25% permissible discretion existing within the Criminal Punishment Code. This total rate includes both mitigated sanction and mitigated length sentences.

<sup>1</sup> Offense dates on or after October 1, 2014.

<sup>2</sup> Offense dates on or after October 1, 2015.

**Table 14**  
**Mitigation Rates\* Among Offenders Scoring in Recommended State Prison Sanction Category\*\***

Offense Type		FY2015-2016 Sentence Dates <sup>1</sup>					FY2016-2017 Sentence Dates <sup>2</sup>				
		Total Mitigated	Mitigated Sanction	Mitigated Length	Not Mitigated	Total	Total Mitigated	Mitigated Sanction	Mitigated Length	Not Mitigated	Total
Murder/Manslaughter	Attempt	14	4	10	88	102	25	8	17	64	89
	Complete	43	11	32	82	125	53	10	43	85	138
Sexual/Lewd Behavior	Attempt	24	11	13	28	52	15	5	10	26	41
	Complete	260	126	134	270	530	280	121	159	290	570
Robbery	Attempt	62	36	26	60	122	57	30	27	62	119
	Complete	544	262	282	537	1,081	563	283	280	511	1,074
Violent,Other	Attempt	20	12	8	23	43	23	12	11	34	57
	Complete	2,872	2,150	722	1,433	4,305	3,188	2,336	852	1,479	4,667
Burglary	Attempt	72	43	29	91	163	65	40	25	75	140
	Complete	2,251	1,449	802	1,516	3,767	2,563	1,588	975	1,550	4,113
Property Theft/Fraud/Damage	Attempt	4	4	0	3	7	1	0	1	1	2
	Complete	1,702	1,174	528	1,214	2,916	1,918	1,320	598	1,173	3,091
Drugs	Attempt	34	25	9	32	66	39	28	11	18	57
	Complete	2,609	1,703	906	1,921	4,530	3,048	1,994	1,054	1,997	5,045
Weapons	Attempt	0	0	0	4	4	2	1	1	9	11
	Complete	470	292	178	543	1,013	592	373	219	664	1,256
Other	Attempt	8	5	3	2	10	18	9	9	9	27
	Complete	1,357	826	531	596	1,953	1,478	983	495	639	2,117
<b>Total</b>		<b>12,346</b>	<b>8,133</b>	<b>4,213</b>	<b>8,443</b>	<b>20,789</b>	<b>13,928</b>	<b>9,141</b>	<b>4,787</b>	<b>8,686</b>	<b>22,614</b>

\* Mitigation of sanction occurs when an offender does not receive a prison sanction although a prison sanction is mandated by the Criminal Punishment Code. Those receiving Drug Offender Probation are not included. Mitigated length occurs when an offender receives a prison sentence below the 25% permissible discretion existing within the Criminal Punishment Code. This total rate includes both mitigated sanction and mitigated length sentences.

\*\* Total Points Exceeding 44.0.

<sup>1</sup> Offense dates on or after October 1, 2014.

<sup>2</sup> Offense dates on or after October 1, 2015.

# APPENDICES





### Inmate Prison Admissions by County of Commitment

From July 1, 2016 to June 30, 2017

This table represents the 67 counties in Florida and the number of inmates admitted into prison who were sentenced from each county or other states.

County	# Inmates Admitted to Prison	Percent
Alachua	679	2.4%
Baker	140	0.5%
Bay	870	3.1%
Bradford	78	0.3%
Brevard	965	3.4%
Broward	1,585	5.6%
Calhoun	28	0.1%
Charlotte	275	1.0%
Citrus	301	1.1%
Clay	250	0.9%
Collier	275	1.0%
Columbia	270	1.0%
Desoto	152	0.5%
Dixie	39	0.1%
Duval	1,757	6.2%
Escambia	784	2.8%
Flagler	71	0.3%
Franklin	45	0.2%
Gadsden	74	0.3%
Gilchrist	41	0.1%
Glades	35	0.1%
Gulf	42	0.1%
Hamilton	33	0.1%
Hardee	82	0.3%
Hendry	97	0.3%
Hernando	337	1.2%
Highlands	156	0.6%
Hillsborough	1,879	6.6%
Holmes	72	0.3%
Indian River	210	0.7%
Jackson	204	0.7%
Jefferson	11	0.0%
Lafayette	17	0.1%
Lake	318	1.1%
Lee	711	2.5%

County	# Inmates Admitted to Prison	Percent
Leon	787	2.8%
Levy	88	0.3%
Liberty	18	0.1%
Madison	37	0.1%
Manatee	536	1.9%
Marion	622	2.2%
Martin	305	1.1%
Miami-Dade	1,400	5.0%
Monroe	190	0.7%
Nassau	104	0.4%
Okaloosa	468	1.7%
Okeechobee	155	0.5%
Orange	1,318	4.7%
Osceola	459	1.6%
Palm Beach	1,229	4.3%
Pasco	624	2.2%
Pinellas	1,392	4.9%
Polk	1,687	6.0%
Putnam	239	0.8%
Santa Rosa	290	1.0%
Sarasota	653	2.3%
Seminole	194	0.7%
St. Johns	450	1.6%
St. Lucie	420	1.5%
Sumter	103	0.4%
Suwannee	172	0.6%
Taylor	120	0.4%
Union	41	0.1%
Volusia	1,048	3.7%
Wakulla	36	0.1%
Walton	109	0.4%
Washington	77	0.3%
00-Interstate	18	0.1%
Data Unavailable	511	
<b>Total</b>	<b>28,783</b>	<b>100.0%</b>

**Inmate Prison Admissions by Circuit of Commitment  
From July 1, 2016 to June 30, 2017**

<b>Circuit</b>	<b># Inmates Admitted to Prison</b>	<b>Percent</b>	<b>Rank</b>
1-Pensacola	1,555	5.1%	9
2-Tallahassee	971	3.4%	18
3-Lake City	688	1.9%	19
4-Jacksonville	2,111	7.4%	1
5-Tarvares	1,681	7.0%	6
6-Clearwater	2,016	8.8%	2
7-Daytona	1,648	6.5%	7
8-Gainesville	1,067	3.1%	17
9-Orlando	1,777	5.6%	5
10-Lakeland	1,925	6.2%	3
11-Miami	1,400	6.5%	10
12-Sarasota	1,138	3.5%	16
13-Tampa	1,879	7.0%	4
14-Panama City	1,293	3.9%	14
15-West Palm Beach	1,229	3.6%	15
16-Key West	190	0.6%	20
17-Ft. Lauderdale	1,585	7.4%	8
18-Sanford	1,385	3.6%	12
19-Ft. Pierce	1,323	4.1%	13
20-Ft. Myers	1,393	4.9%	11
Data Unavailable	529		
<b>TOTAL</b>	<b>28,783</b>	<b>100.0%</b>	

## Rule 3.992(a) Criminal Punishment Code Scoresheet

The Criminal Punishment Code Scoresheet Preparation Manual is available at: [http://www.dc.state.fl.us/pub/sen\\_cpcm/index.html](http://www.dc.state.fl.us/pub/sen_cpcm/index.html)

1. DATE OF SENTENCE	2. PREPARER'S NAME	3. COUNTY	4. SENTENCING JUDGE	
5. NAME (LAST, FIRST, M.I.)	6. DOB	8. RACE <input type="checkbox"/> B <input type="checkbox"/> W <input type="checkbox"/> OTHER	10. PRIMARY OFF. DATE	12. PLEA <input type="checkbox"/>
	7. DC #	9. GENDER <input type="checkbox"/> M <input type="checkbox"/> F	11. PRIMARY DOCKET #	TRIAL <input type="checkbox"/>

I. **PRIMARY OFFENSE:** If Qualifier, please check \_\_\_ A \_\_\_ S \_\_\_ C \_\_\_ R (A=Attempt, S=Solicitation, C=Conspiracy, R=Reclassification)

FELONY DEGREE	F.S.#	DESCRIPTION	OFFENSE LEVEL	POINTS
_____ / _____	_____ / _____	_____ / _____	_____ / _____	_____ / _____
(Level - Points: 1=4, 2=10, 3=16, 4=22, 5=28, 6=36, 7=56, 8=74, 9=92, 10=116)				
Prior capital felony triples Primary Offense points <input type="checkbox"/>				I. _____

II. **ADDITIONAL OFFENSE(S):** Supplemental page attached

DOCKET#	FEL/MM DEGREE	F.S.#	OFFENSE LEVEL	QUALIFY A S C R	COUNTS	POINTS	TOTAL
_____ / _____	_____ / _____	_____ / _____	_____ / _____	<input type="checkbox"/> <input type="checkbox"/> <input type="checkbox"/> <input type="checkbox"/>	_____ x	_____	= _____
DESCRIPTION _____							
_____ / _____	_____ / _____	_____ / _____	_____ / _____	<input type="checkbox"/> <input type="checkbox"/> <input type="checkbox"/> <input type="checkbox"/>	_____ X	_____	= _____
DESCRIPTION _____							
_____ / _____	_____ / _____	_____ / _____	_____ / _____	<input type="checkbox"/> <input type="checkbox"/> <input type="checkbox"/> <input type="checkbox"/>	_____ X	_____	= _____
DESCRIPTION _____							
_____ / _____	_____ / _____	_____ / _____	_____ / _____	<input type="checkbox"/> <input type="checkbox"/> <input type="checkbox"/> <input type="checkbox"/>	_____ x	_____	= _____
DESCRIPTION _____							

(Level - Points: M=0.2, 1=0.7, 2=1.2, 3=2.4, 4=3.6, 5=5.4, 6=18, 7=28, 8=37, 9=46, 10=58)

Prior capital felony triples Additional Offense points  Supplemental page points \_\_\_\_\_

III. **VICTIM INJURY:**

	Number	Total		Number	Total
2nd Degree Murder	240 x	_____ = _____	Slight	4 x	_____ = _____
Death	120 x	_____ = _____	Sex Penetration	80 x	_____ = _____
Severe	40 x	_____ = _____	Sex Contact	40 x	_____ = _____
Moderate	18 x	_____ = _____			

III. \_\_\_\_\_

IV. **PRIOR RECORD:** Supplemental page attached

FEL/MM DEGREE	F.S.#	OFFENSE LEVEL	QUALIFY: A S C R	DESCRIPTION	NUMBER	POINTS	TOTAL
_____ / _____	_____ / _____	_____ / _____	<input type="checkbox"/> <input type="checkbox"/> <input type="checkbox"/> <input type="checkbox"/>	_____	_____ X	_____	= _____
_____ / _____	_____ / _____	_____ / _____	<input type="checkbox"/> <input type="checkbox"/> <input type="checkbox"/> <input type="checkbox"/>	_____	_____ X	_____	= _____
_____ / _____	_____ / _____	_____ / _____	<input type="checkbox"/> <input type="checkbox"/> <input type="checkbox"/> <input type="checkbox"/>	_____	_____ X	_____	= _____
_____ / _____	_____ / _____	_____ / _____	<input type="checkbox"/> <input type="checkbox"/> <input type="checkbox"/> <input type="checkbox"/>	_____	_____ X	_____	= _____
_____ / _____	_____ / _____	_____ / _____	<input type="checkbox"/> <input type="checkbox"/> <input type="checkbox"/> <input type="checkbox"/>	_____	_____ X	_____	= _____
_____ / _____	_____ / _____	_____ / _____	<input type="checkbox"/> <input type="checkbox"/> <input type="checkbox"/> <input type="checkbox"/>	_____	_____ X	_____	= _____
_____ / _____	_____ / _____	_____ / _____	<input type="checkbox"/> <input type="checkbox"/> <input type="checkbox"/> <input type="checkbox"/>	_____	_____ X	_____	= _____
_____ / _____	_____ / _____	_____ / _____	<input type="checkbox"/> <input type="checkbox"/> <input type="checkbox"/> <input type="checkbox"/>	_____	_____ X	_____	= _____

(Level = Points: M=0.2, 1=0.5, 2=0.8, 3=1.6, 4=2.4, 5=3.6, 6=9, 7=14, 8=19, 9=23, 10=29)

Supplemental page points \_\_\_\_\_

IV. \_\_\_\_\_

**Page 1 Subtotal:** \_\_\_\_\_

Effective Date: For offenses committed under the Criminal Punishment Code effective for offenses committed on or after October 1, 1998 and subsequent revisions.

<b>NAME (LAST, FIRST, MI)</b>	<b>DOCKET #</b>
-------------------------------	-----------------

**Page 1 Subtotal:** \_\_\_\_\_

V. Legal Status violation = 4 Points  
 Escape  Fleeing  Failure to appear  Supersedeas bond  Incarceration  Pretrial intervention or diversion program  
 Court imposed or post prison release community supervision resulting in a conviction **V.** \_\_\_\_\_

VI. Community Sanction violation before the court for sentencing  
 Probation  Community Control  Pretrial Intervention or diversion **VI.** \_\_\_\_\_  
 6 points for any violation other than new felony conviction x \_\_\_\_\_ each successive violation OR  
 New felony conviction = 12 points x \_\_\_\_\_ each successive violation if new offense results in conviction before or at same time as sentence for violation of probation OR  
 12 points x \_\_\_\_\_ each successive violation for a violent felony offender of special concern when the violation is not based solely on failure to pay costs, fines, or restitution OR  
 New felony conviction = 24 points x \_\_\_\_\_ each successive violation for a violent felony offender of special concern if new offense results in a conviction before or at the same time for violation of probation

VII. Firearm/Semi-Automatic or Machine Gun = 18 or 25 Points **VII.** \_\_\_\_\_

VIII. Prior Serious Felony - 30 Points **VIII.** \_\_\_\_\_

Subtotal Sentence Points \_\_\_\_\_

IX. Enhancements (only if the primary offense qualifies for enhancement)

Law Enf. Protect.	Drug Trafficker	Motor Vehicle Theft	Criminal Gang Offense	Domestic Violence in the Presence of Related Child <small>(offenses committed on or after 3/12/07)</small>	Adult-on-Minor Sex Offense <small>(offenses committed on or after 10/1/14)</small>
____ x 1.5    ____ x 2.0    ____ x 2.5	____ x 1.5	____ x 1.5	____ x 1.5	____ x 1.5	____ x 2.0

Enhanced Subtotal Sentence Points **IX.** \_\_\_\_\_

**TOTAL SENTENCE POINTS** \_\_\_\_\_

**SENTENCE COMPUTATION**

If total sentence points are less than or equal to 44, the lowest permissible sentence is any non-state prison sanction. If the total sentence points are 22 points or less, see Section 775.082(10), Florida Statutes, to determine if the court must sentence the offender to a non-state prison sanction.

If total sentence points are greater than 44:  
 \_\_\_\_\_ minus 28 = \_\_\_\_\_ x .75 = \_\_\_\_\_  
 total sentence points lowest permissible prison sentence in months

If total sentence points are 60 points or less and court makes findings pursuant to both Florida Statute 948.20 and 397.334(3), the court may place the defendant into a treatment-based drug court program.

The maximum sentence is up to the statutory maximum for the primary and any additional offenses as provided in s. 775.082, F.S., unless the lowest permissible sentence under the Code exceeds the statutory maximum. Such sentences may be imposed concurrently or consecutively. If total sentence points are greater than or equal to 363, a life sentence may be imposed.

\_\_\_\_\_

maximum sentence In years

**TOTAL SENTENCE IMPOSED**

	Years	Months	Days
<input type="checkbox"/> State Prison	_____	_____	_____
<input type="checkbox"/> County Jail	_____	_____	_____
<input type="checkbox"/> Community Control	_____	_____	_____
<input type="checkbox"/> Probation <input type="checkbox"/> Modified	_____	_____	_____

Please check if sentenced as  habitual offender,  habitual violent offender,  violent career criminal,  prison releasee reoffender, or a  mandatory minimum applies.

Mitigated Departure  Plea Bargain  Prison Diversion Program

Other Reason \_\_\_\_\_

<b>JUDGE'S SIGNATURE</b>	
--------------------------	--

Effective Date: For offenses committed under the Criminal Punishment Code effective for offenses committed on or after October 1, 1998, and subsequent revisions.

**RULE 3.992(b) Supplemental Criminal Punishment Code Scoresheet**

NAME (LAST, FIRST, MI.)	DOCKET #	DATE OF SENTENCE
-------------------------	----------	------------------

**II. ADDITIONAL OFFENSES(S):**

DOCKET#	FEL/MM DEGREE	F.S#	OFFENSE LEVEL	QUALIFY A S C R	COUNTS	POINTS	TOTAL
_____ / _____	_____ / _____	_____ / _____	_____	<input type="checkbox"/> <input type="checkbox"/> <input type="checkbox"/> <input type="checkbox"/>	_____ x _____	_____ = _____	
DESCRIPTION _____							
_____ / _____	_____ / _____	_____ / _____	_____	<input type="checkbox"/> <input type="checkbox"/> <input type="checkbox"/> <input type="checkbox"/>	_____ x _____	_____ = _____	
DESCRIPTION _____							
_____ / _____	_____ / _____	_____ / _____	_____	<input type="checkbox"/> <input type="checkbox"/> <input type="checkbox"/> <input type="checkbox"/>	_____ x _____	_____ = _____	
DESCRIPTION _____							
_____ / _____	_____ / _____	_____ / _____	_____	<input type="checkbox"/> <input type="checkbox"/> <input type="checkbox"/> <input type="checkbox"/>	_____ x _____	_____ = _____	
DESCRIPTION _____							
_____ / _____	_____ / _____	_____ / _____	_____	<input type="checkbox"/> <input type="checkbox"/> <input type="checkbox"/> <input type="checkbox"/>	_____ x _____	_____ = _____	
DESCRIPTION _____							

(Level - Points: M=0.2, 1=0.7, 2=1.2, 3=2.4, 4=3.6, 5=5.4, 6=18, 7=28, 8=37, 9=46, 10=58)

II. \_\_\_\_\_

**IV. PRIOR RECORD**

FEL/MM DEGREE	F.S.#	OFFENSE LEVEL	QUALIFY: A S C R	DESCRIPTION	NUMBER	POINTS	TOTAL
_____ / _____	_____ / _____	_____ / _____	<input type="checkbox"/> <input type="checkbox"/> <input type="checkbox"/> <input type="checkbox"/>	_____	_____ X _____	_____ = _____	
_____ / _____	_____ / _____	_____ / _____	<input type="checkbox"/> <input type="checkbox"/> <input type="checkbox"/> <input type="checkbox"/>	_____	_____ X _____	_____ = _____	
_____ / _____	_____ / _____	_____ / _____	<input type="checkbox"/> <input type="checkbox"/> <input type="checkbox"/> <input type="checkbox"/>	_____	_____ X _____	_____ = _____	
_____ / _____	_____ / _____	_____ / _____	<input type="checkbox"/> <input type="checkbox"/> <input type="checkbox"/> <input type="checkbox"/>	_____	_____ X _____	_____ = _____	
_____ / _____	_____ / _____	_____ / _____	<input type="checkbox"/> <input type="checkbox"/> <input type="checkbox"/> <input type="checkbox"/>	_____	_____ X _____	_____ = _____	
_____ / _____	_____ / _____	_____ / _____	<input type="checkbox"/> <input type="checkbox"/> <input type="checkbox"/> <input type="checkbox"/>	_____	_____ X _____	_____ = _____	

(Level = Points: M=0.2, 1=0.5, 2=0.8, 3=1.6, 4=2.4, 5=3.6, 6=9, 7=14, 8=19, 9=23, 10=29)

IV. \_\_\_\_\_

**REASONS FOR DEPARTURE - MITIGATING CIRCUMSTANCES**  
(reasons may be checked here or written on the scoresheet)

- Legitimate, uncoerced plea bargain.
- The defendant was an accomplice to the offense and was a relatively minor participant in the criminal conduct.
- The capacity of the defendant to appreciate the criminal nature of the conduct or to conform that conduct to the requirements of law was substantially impaired.
- The defendant requires specialized treatment for a mental disorder that is unrelated to substance abuse or addiction, or for a physical disability, and the defendant is amenable to treatment.
- The need for payment of restitution to the victim outweighs the need for a prison sentence.
- The victim was an initiator, willing participant, aggressor, or provoker of the incident.
- The defendant acted under extreme duress or under the domination of another person.
- Before the identity of the defendant was determined, the victim was substantially compensated.
- The defendant cooperated with the State to resolve the current offense or any other offense.
- The offense was committed in an unsophisticated manner and was an isolated incident for which the defendant has shown remorse.
- At the time of the offense the defendant was too young to appreciate the consequences of the offense.
- The defendant is to be sentenced as a youthful offender.
- The defendant is amenable to the services of a postadjudicatory treatment-based drug court program and is otherwise qualified to participate in the program.
- The defendant was making a good faith effort to obtain or provide medical assistance for an individual experiencing a drug-related overdose.

Pursuant to 921.0026(3) the defendant's substance abuse or addiction does not justify a downward departure from the lowest permissible sentence, except for the provisions of s. 921.0026(2)(m).

Effective Date: For offenses committed under the Criminal Punishment Code effective for offenses committed on or after October 1, 1998 and subsequent revisions.



For additional copies or more information contact:

Research Manager  
Bureau of Research and Data Analysis  
Florida Department of Corrections  
501 South Calhoun Street  
Tallahassee, FL 32399  
850-717-3647  
[dcresearch@mail.dc.state.fl.us](mailto:dcresearch@mail.dc.state.fl.us)

