



FLORIDA DEPARTMENT OF Environmental Protection

Marjory Stoneman Douglas Building
3900 Commonwealth Boulevard
Tallahassee, Florida 32399-3000

Rick Scott
Governor

Carlos Lopez-Cantera
Lt Governor

Noah Valenstein
Secretary

September 28, 2018

The Honorable Rick Scott
Governor, State of Florida
Plaza Level 05, The Capitol
400 South Monroe Street
Tallahassee, Florida 32399-0001

The Honorable Joe Negron
President, The Florida Senate
Room 409, The Capitol
404 South Monroe Street
Tallahassee, Florida 32399-1100

The Honorable Richard Corcoran
Speaker, Florida House of Representatives
Room 420, The Capitol
402 South Monroe Street
Tallahassee, Florida 32399-1300

Dear Governor Scott, President Negron and Speaker Corcoran:

Pursuant to section 380.512, Florida Statutes, I am pleased to submit the Florida Communities Trust (FCT) 2017-2018 Annual Report. Florida Communities Trust provides Florida Forever funding through grants awarded to assist local governments and eligible non-profit organizations in acquiring community-based parks, open space, greenways, and working waterfronts.

If you have questions regarding this report, please contact me or David Clark, Deputy Secretary for Land and Recreation, at 850-245-2044 or David.A.Clark@dep.state.fl.us.

Sincerely,

A handwritten signature in blue ink, appearing to read "Noah Valenstein", with a long horizontal flourish extending to the right.

Noah Valenstein
Secretary

Enclosure



**Florida Communities Trust
Annual Report
Fiscal Year 2017-2018**

**Land and Recreation Grants Section
Florida Department of Environmental Protection**

September 28, 2018



Florida Communities Trust
3900 Commonwealth Boulevard, MS 115
Tallahassee, Florida 32399-3000
(850) 245-2501
www.FloridaDEP.gov

Table of Contents

LETTER FROM THE CHAIR	1
PROJECT LOCATION MAP	2
FLORIDA COMMUNITIES TRUST	3
MISSION AND ACCOMPLISHMENTS	4
PARK HAPPENINGS	9
CLOSINGS AND REIMBURSEMENTS	10
ACQUIRED PROJECTS BY COUNTY 1991-2018	11
SUMMARY OF FINANCIALACTIVITIES	20
FLORIDA COMMUNITIES TRUST BOARD MEMBERS	21

Front Cover Photo: Three Sisters Springs, FCT# 08-088-FFB, City of Crystal River

Back Cover Photo: Three Sisters Springs, FCT# 08-088-FFB, City of Crystal River





FLORIDA DEPARTMENT OF Environmental Protection

Marjory Stoneman Douglas Building
3900 Commonwealth Boulevard
Tallahassee, Florida 32399-3000

Rick Scott
Governor

Carlos Lopez-Cantera
Lt. Governor

Noah Valenstein
Secretary

September 28, 2018

Florida Communities Trust
Letter from the Chair

Dear Floridians,

For more than a quarter century, the Florida Communities Trust (FCT) has established a rich legacy of partnership and preservation marked by a diverse array of parks, greenways, urban green spaces, public beach access points, wildlife habitats and working waterfronts. As perpetual stewards of over 600 project sites throughout Florida, FCT works to continually enhance local communities and recreational access for Floridians.

This past year, FCT assisted in the acquisition of Lake Dan Preserve, Phase 11, which will ensure preservation and protection of uplands and wetlands located in rural Hillsborough County. In addition to the conservation of the natural resources located on the property, this 1100-acre phased project site will be developed to provide multi-use passive recreation activities such as hiking, wildlife viewing, nature study and equestrian trail riding to the surrounding communities. As a result of Florida Forever funding awarded in Fiscal Year 2016-2017, FCT is working with local partners to acquire eleven additional project sites to safeguard Florida's fragile ecosystems while promoting access to outdoor recreation opportunities for persons with unique abilities.

Florida Communities Trust complements many grant programs administered by the Florida Department of Environmental Protection, including the Florida Recreation Development Assistance Program, Land and Water Conservation Fund and Recreational Trails Program. These grant programs help local communities leverage their resources and build interconnected community parks and preserves to better serve our citizens. Please take a few moments to review this report and learn how FCT continues to strengthen our communities.

Sincerely,


David A. Mark
Chair, Florida Communities Trust Governing Board
Deputy Secretary, Land & Recreation



FCT Parks and Open Space Program 1990-2018 Projects



What is Florida Communities Trust?

Florida Communities Trust (FCT) is a multi-faceted program housed within the Florida Department of Environmental Protection. Florida Communities Trust was first funded in 1991 under Preservation 2000 as a funding source for local communities to buy land for the protection of natural and cultural resources and public access for recreational opportunities.

Today, FCT administers the Parks and Open Space and Stan Mayfield Working Waterfronts (SMWW) Programs, two competitive grant programs that provide funding to local governments and non-profit organizations to assist local land conservation efforts. The Parks and Open Space program helps local communities meet the challenges of growth, supporting viable community development and protecting natural resources and open space. The Stan Mayfield Working Waterfronts program acknowledges the importance of the traditional seafood harvesting and aquaculture industries in Florida.



Bay Drive Park
FCT# 11-026-FF11, Flagler County

Projects funded by FCT have fostered cultural and historical preservation, trail system development and public access to water. Florida Communities Trust also furthers the outdoor recreation, natural resource protection and working waterfront needs identified in local government comprehensive plans.



FY2018-2019 SMWW Applicant
Homosassa, FL

Florida Communities Trust is governed by a five-member board that includes the Secretary of the Department of Environmental Protection or designee and four members of the public appointed by the Governor. Appointees to the Board include a former elected official of a metropolitan municipality, a former elected official of a county, a representative of an environmental non-profit organization and a representative of the development industry.

Mission and Accomplishments

Promoting Community

Florida Communities Trust helps communities further the goals of its local government land use plans through land acquisition and innovative, non-regulatory solutions to the challenges inherent in the land-planning process. After a project has been acquired, FCT stewardship continues in perpetuity through a formal agreement, providing guidance with park development and management oversight through annual stewardship reporting and site visits.



Miramar Pineland Natural Area
Monthly Nature Tots Program

Funding for FCT is currently provided through the Florida Forever program. Once a project has been purchased, the grant recipient, not the State, holds title to the lands. Each recipient is then responsible for land stewardship and implementing a formal management plan that must be approved by FCT. All FCT properties include a Board of Trustees 'reverter' or 'spring' clause to protect the State's interests in perpetuity.

Linking Urban Populations with Natural Areas

Florida Communities Trust is dedicated to working with communities across the state to acquire lands for recreation, open spaces, working waterfronts and fostering responsible stewardship of those lands once acquired. The quality of life, environmental quality, as well as the viability and vitality of the urban areas of this state are directly linked to urban open space and greenways. The creation of greenways and restoration of urban lakes, rivers, and watersheds in the urban areas of this state are necessary to link populated areas with natural areas.

Miramar Pineland ESL Addition, FCT# 01-118-FF1, Broward County

The Miramar Pineland Natural Area Addition is adjacent to an existing protected site. In 2003, Florida Communities Trust funded the purchase of 53 acres, which is included in the 98 acres known as the Miramar Pineland Natural Area. Over \$5.5 million in FCT funding along with \$8.3 million of local match was used to purchase the property. The Miramar Pineland Natural Area is one of the larger natural areas managed by Broward County.



The project site is characterized by stands of large slash pine trees intermixed with patches of dense oak and large sections of open wet prairie. A variety of raptors use the open areas and adjacent canal for foraging and the tall tree canopy for roosting, while the common ground dove, rufous-sided towhee, loggerhead shrike, killdeer, yellowthroat, and warbler prefer the low, open vegetation of the shrubby areas. In addition, during the spring, hundreds of nighthawks have been known to gather over the project site in preparation for their northern migration. Numerous other species of wildlife occur in this type of habitat.



Local high school students assist with removal of exotic plants

Disturbance caused by illegal dumping and off-road vehicles was evident on the project site, however, after a perimeter fence was installed, the scars left by off-road vehicles began to heal and illegal dumping ceased. Miramar Pineland Natural Area provides outdoor recreational opportunities while enhancing the health and well-being of the local and urban residents.

Expansion of Green Spaces and Enhancement of Recreation Areas

Projects funded by FCT provide land for recreational opportunities to enhance the health and well-being of the residents of this state.



PEAR Park, FCT# 03-086-FFJ, Lake County

Palatka Environmental and Agricultural Reserve (PEAR) Park is located along the Palatka River in Lake County, Florida and encompasses 318 acres. The park is divided into two distinct sections consisting of the passive wildlife conservation area, and the "Gateway", which is a combination of active recreation and natural areas. Funding from FCT totaling \$2,362,500, along with the local match of \$791,655, helped the County acquire 51 acres of this community park.

Today the site consists of several miles of trails to explore, observation pavilions, picnic facilities, a nature center, various gardens including a community garden and a butterfly demonstration area. The park also offers numerous active recreational amenities including ballfields, a playground, exercise trail, and tennis courts to name only a few. There are large nature areas that provide habitat for wildlife and many educational opportunities. Several educational opportunities involve the history of the agricultural practices of the area, plant and animal identification, habitat types and restoration programs, upland and wetland marsh identification and native plantings.



While the site encompasses several active and passive recreational opportunities, it also promotes community partnerships through the creation of a community garden and a memorial tree farm where the community can come and plant a tree in memory of a loved one who has passed away and watch it grow as the years pass. PEAR Park is a well-planned use of land for the protection of natural resources while giving several opportunities for citizens and visitors to enjoy the state's natural resources.



Preserving Florida's Unique Heritage

The majority of FCT's projects protect precious natural resources but many of them also have historical and cultural value. Special emphasis is placed on preserving historical resources and has helped Florida's communities save dozens of sites with significance at the local, state and national levels.



Shingle Creek, FCT# 98-065-PBA; 01-143-FF1; 03-029-FFJ; 06-015-FF6, Osceola County

Shingle Creek is a scenic waterway that slices through the growing urbanization of Osceola County and serves as headwaters to the Kissimmee Chain of Lakes, and ultimately, the Everglades. It is not only home to a host of a natural communities and listed species but is historically the first place of settlement in the County. With the acquisition of four Florida Communities Trust project sites - the Steffee, Babb, St. Clair, and Ruba Sites - Osceola County and the City of Kissimmee created a regional park that is managed for conservation, outdoor recreation and enhancement of natural resources. FCT funding of \$11 million helped acquired more than 289 acres encompassing this project site.



Shingle Creek Regional Park provides a unique glimpse "back in time" to Osceola County's rich ecological, historical and cultural heritage in the midst of bustling, rapidly urbanizing residential, tourist and commercial areas. Shingle

Creek has played a critical role in the lives of the County's residents and visitors, from the original Seminole Indian Tribe inhabitants, to the County's early settlers in the 1800s, to today's tourists along the Interstate 192 corridor. In addition to the beautiful, winding blackwater creek, the corridor also includes orange groves, improved pasture, slash pine-mesic oak flat woods, longleaf pine, oak hammocks, bald cypress swamps, tupelo gum swamp and floodplain marsh wetlands. Many amenities have been developed throughout the park which include nature trails, canoe launches, picnic areas, renovation of the historic farm museum, playgrounds, dog park, primitive camp sites and parking. Also, many educational programs and events are held at this site every year. Educational programs include tours along Shingle Creek and several themed events for the general public which draws thousands of people each year.



Promoting Education

Education is an important part of resource conservation. To that end, FCT places a priority on projects with educational aspects, awarding points during competitive selection to those projects providing for onsite interpretative signs, educational classes and even environmental education centers.

Minnehaha Park Canal Property, FCT# 95-053-P56, City of Maitland (Orange County)

The Minnehaha Park Canal Property is 2 acres located on the south shore of Lake Minnehaha and is bordered by Nina Canal on the west and Minnehaha Park on the south and east. The area contains primarily wetland vegetation and hosts a variety of wetland species. The property has been developed with the intent to enhance passive and environmental education opportunities for visitors to the adjacent Minnehaha Park. The site was acquired to provide additional passive recreational resources to the public and to ensure that the project site is managed and developed in a manner consistent with the protection of its delicate ecosystem.





Development activities that have been completed on the site include the following: a 425-linear foot boardwalk adjacent to the Nina Canal and Lake Minnehaha, picnic pavilion, and interpretive signage in four locations along the boardwalk that outline various subjects relating to wetland plant species.

Fiscal Year 2016-2017 Florida Forever "Unique Abilities" Grant Application Cycle

Florida Communities Trust received a direct appropriation in Fiscal Year 2016-2017 for projects that met FCT criteria and promoted access to outdoor recreation opportunities for persons with unique abilities. This appropriation of \$10 million will fund eleven additional FCT projects throughout Florida. FCT Staff also began work on two new projects in Brevard and Flagler Counties to encumber the remaining Florida Forever funds from Fiscal Year 2010-2011.



Myers-Stickel Property
FCT# 16-012-UA17, St. Lucie County
(Unique Abilities Project)



City Center Barrier Free Park
FCT# 16-015-UA17, City of Freeport
(Unique Abilities Project)

Conclusion

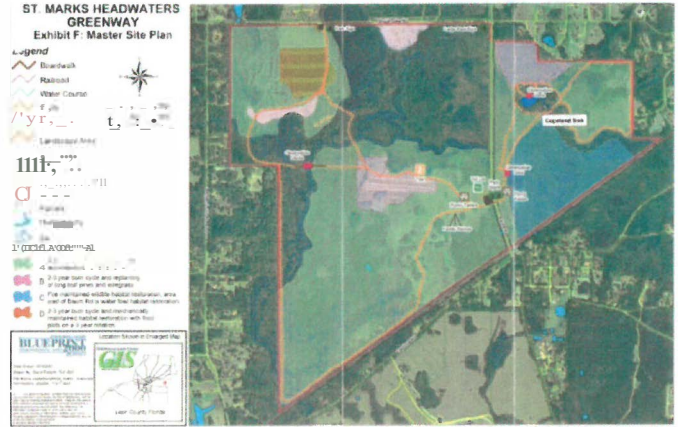
Florida Communities Trust will continue working with Florida's communities to strengthen relationships, encourage appropriate land management practices and assure all community responsibilities are met at each FCT funded project site, helping to preserve more land for Florida's future parks, open spaces and working waterfronts.

Park Happenings

St. Marks Headwaters Leon County FCT# 05-011-FFS

Acres -160.52
Total Project Cost - \$1,525,475.00
Grant Award - \$915,285.00
Local Match - \$610,190.00

The St. Marks Headwaters project is located in eastern Leon County and is adjacent to a previously acquired FCT site. The 160-acre project helps buffer the headwaters of the St. Marks River from encroaching residential development. The St. Marks Headwaters Greenway will be managed in ways that will maintain and improve water quality by limiting development in the headwaters area and reducing non-point pollution. The St. Marks River is a designated Outstanding Florida Water and the project includes intact bottomland forests, freshwater marshes and sinkholes. Recreational elements include hiking and equestrian nature trails, wildlife observation platform, and picnic pavilion.



Park Grand Opening - January 24, 2018



Closings and Reimbursements

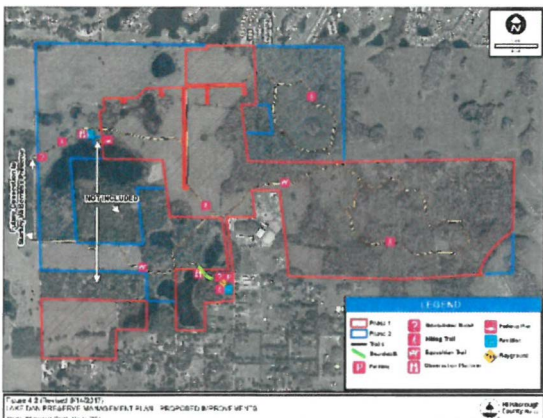
Lake Dan Preserve, Phase II Hillsborough County FCT # 11-046-FF11

Acres -421.94
Project Cost- \$12,309,209.24
Grant Award - \$6, 154,604.64
Local Match - \$6, 154,604.64

The Lake Dan Preserve, Phase II project consists of pine flatwoods, scrubby flatwoods, bay heads, cypress swamps, freshwater marshes, wet prairie, a natural lake (Lake Dan), and improved pasture. Approximately 290 acres (67%) of the project site has natural habitat with approximately 140 acres (33%) of improved pasture with some impacted wetlands. Most of the native areas are in good condition through consistent prescribed burning. Several listed species (Gopher Tortoise, Florida Sandhill Crane) have been seen on the site. The project will be managed to maximize the quality of the natural areas.



Much of the shoreline of Lake Dan has been cleared of vegetation. This has increased non-point source pollution of the lake through run-off across exposed soil. Some of the cypress swamps have been rim ditched and/or interconnected to increase drainage. Restoration of the wetland areas will consist of backfilling the rim ditches and contouring the surrounding land to a more natural grade, then installing native transitional upland and wetland vegetation that is consistent with the species composition of undisturbed transitional habitats within the project site. Restoration plans include returning the improved pasture to native upland habitats, which include pine flatwoods and scrubby flatwoods.



An educational kiosk will be located where the trail from the Pinellas County side crosses onto the project. The project will have a system of nature trails that interconnect the project with Phase I and adjacent trail systems, as well as one or more picnic structures/pavilion and a scenic overlook will be located on or near the northwest shore of Lake Dan.

Acquired Projects: 1991-2017

Project#	Project Name	Recipient
Alachua		
91-049-P1A	Hogtown Creek Greenway	City of Gainesville/Alachua County
99-039-P9A	Depot Junction	City of Gainesville
01-103-FF1	Micanopy Native American Heritage Preserve	Town of Micanopy
01-141-FF1	Blues Creek Ravine and Fox Pond	Alachua Conservation Trust
01-149-FF1	Beville Creek	City of Gainesville
02-043-FF2	Mill Creek Nature Preserve	Alachua County
02-077-FF2	Duval Neighborhood Stormwater Park	City of Gainesville
02-089-FF2	San Felsch Conservation Corridor	City of Alachua
05-024-FFS	Payne's Prairie Sweetwater Addition	Alachua County
04-071-FF4	Chuckwalla Lake	Alachua Conservation Trust
06-110-FF6	Barr Hammock Ledwith Prairie	Alachua County/Conservation Trust for Florida
06-096-FF6	Prairie Creek Basin	Alachua Conservation Trust
06-096-FF6	Prairie Creek Basin	Alachua Conservation Trust
06-095-FF6	Hogtown Creek Headwaters	City of Gainesville
07-115-FF?	Phifer Flatwoods	Alachua County
07-114-FF?	Levy Prairie	Alachua County
08-085-FFB	Little Orange Creek	City of Hawthorne
08-085-FFB	Little Orange Creek - Blackwood Parcel	City of Hawthorne
11-021-FF11	Turkey Creek Hammock Preserve	Alachua County
08-082-FFB	Santa Fe Preserve	Alachua County
Baker		
03-040-FF3	St. Mary's Shoals	Baker County
08-069-FFB	St. Mary's Shoals - Phase I	Baker County
08-069-FFB	St. Mary's Shoals - Phase I - Rhoden Parcel	Baker County
Bay		
92-021-P2A	Thomas Drive Beach Access	Bay County
92-042-P2A	Parker Tract	City of Mexico Beach
93-027-P3A	Oaks by the Bay	City of Panama City
93-026-P3A	Sweetbay Wetlands Preserve	City of Panama City
96-006-P?A	Parker Environmental Exploratorium	City of Parker
96-025-P?A	Venetian Sunset Park	City of Panama City
01-153-FF1	Coral Bean Addition Under the Oaks Park	City of Parker
01-150-FF1	Pier Park	City of Panama City Beach
Brevard		
91-016-P1A	Turkey Creek Scrub	Brevard County
95-019-P56	Manatee Sanctuary Park	City of Cape Canaveral
95-063-P56	Malabar Sanctuary Greenway I	Town of Malabar

Project#	Project Name	Recipient
Brevard (Continued)		
95-064-P56	Ais Lookout Point	City of Palm Bay
95-079-P56	Wavecrest Park Extension	Town of Indialantic
96-019-P?A	Malabar Sanctuary Greenway	Town of Malabar
96-059-P?A	Turkey Creek Blueway	City of Palm Bay
96-060-P?A	Castaway Point	City of Palm Bay
96-062-P?A	Banana River Park	City of Cape Canaveral
98-044-PBA	Oceanfront Wildlife and Habitat Preserve	City of Satellite Beach
98-076-PBA	Melbourne Beach Loggerhead Park	Town of Melbourne Beach
99-044-P9A	Oceanfront Preservation	City of Satellite Beach / Brevard Co
01-065-FF1	Shoreside Park	Town of Palm Shores
01-077-FF1	Cocoa Conservation Area	City of Cocoa
02-038-FF2	Downtown Stormwater Park	City of Titusville
03-020-FF3	Eau Gallie Square	City of Melbourne
03-035-FF3	Cocoa Beach Maritime Hammock Preserve	City of Cocoa Beach
05-030-FFS	Max K. Rhodes Park	Brevard County
06-055-FF6	Molitor Property	City of Titusville
06-001-FF6	Anderson Stormwater Park	City of Rockledge
06-080-FF6	Thousand Islands Conservation Area	Brevard County
11-031-FF11	Veteran's Memorial Park	Brevard County
Bradford		
Broward		
93-025-P3A	Environmental Preserve	Town of Pembroke Park
94-008-P4A	The Sawgrass Sanctuary	City of Sunrise
94-015-P4A	Sheridan Oak Forest	City of Hollywood/Broward County
95-055-P56	Island City Park Preserve	City of Wilton Manor
96-014-P?A	Sabal Pines Park	City of Coconut Creek
96-058-P?A	Sandy Ridge Sanctuary	City of Coral Springs
99-036-P9A	Academic and Outdoor Recreation Village	City of Pembroke Pines
99-073-P9A	Carpenter's Sand Pine Preserve	City of Oakland Park
00-025-P10	McNab Park Restoration	City of Tamarac
00-055-P10	Richardson Property	City of Wilton Manors/Broward County
00-071-P10	Pembroke Pines Preservation Expansion	City of Pembroke Pines
01-047-FF1	Plantation Central Open Space	City of Plantation
01-074-FF1	Pleasant Oceanside Preserve	City of Deerfield Beach
01-076-FF1	Island City Park Addition	City of Wilton Manors
01-093-FF1	Hollywood North Beach Addition	Broward County / City of Hollywood
01-113-FF1	Sheridan Street ESL Addition	Broward County
01-118-FF1	Miramar Pineland ESL Addition	Broward County / City of Miramar

Project#	Project Name	Recipient
Broward (Continued)		
02-002-FF2	Central Broward Regional Park	Broward County & City of Lauderdale
02-018-FF2	Florence Hardy Park	City of Ft. Lauderdale
02-021-FF2	Last Cypress East	Broward County/City of Lauderdale Lakes
02-022-FF2	Last Cypress West	Broward County/City of Lauderdale Lakes
02-049-FF2	Southwest Nature and Recreational Park	City of Pembroke Pines
02-088-FF2	Davie's Wetlands Restoration	Town of Davie
03-010-FF3	Highlands Scrub Addition	Broward County
03-011-FF3	Helene Klein Pineland Preserve	Broward County
03-012-FF3	Hillsboro Pineland ESL Addition	Broward County
03-014-FF3	Mills Pond Addition	Broward County
03-022-FF3	Country Estates Open Space & Fishing Hole	Town of Southwest Ranches
03-025-FF3	Southwest Meadows Sanctuary	Town of Southwest Ranches
03-026-FF3	Frontier Trails Conservation Area	Town of Southwest Ranches
03-043-FF3	Tamarac Preservation Park	City of Tamarac
04-003-FF4	Whispering Woods Park	Broward County/City of Coral Springs
04-007-FF4	Hollywood North Beach Park Addition 2	Broward County
04-008-FF4	Little Fuzzy Bunny Cove	Broward Co./City of Dania Beach
04-011-FF4	Saw Palmetto aka Hillsboro Pineland	Broward County
04-002-FF4	Vista View Regional Park Expansion	Broward County
04-019-FF4	Calusa Corners	Town of Southwest Ranches
04-012-FF4	Deerfield Beachfront Park	City of Deerfield Beach/Town of Hillsboro
04-010-FF4	Sunny Lake Trailhead & Conservation Park	Town of Davie
05-006-FF5	West Creek Pineland Passage	Broward County
04-009-FF4	Coontie Hatchee Landing	Broward County/City of Ft. Lauderdale
05-002-FF5	Broward Co. and City of Ft. Lauderdale	North Fork Riverwalk
05-048-FF5	Davie Farm Park	Town of Davie
06-011-FF6	Central Broward Regional Park	Broward County
07-004-FF?	Chapel Trail Nature Preserve	City of Pembroke Pines

Calhoun

96-055-P?A	Atkins Park Addition	Calhoun County
------------	----------------------	----------------

Charlotte

92-012-P2A	Tippecanoe Scrub	Charlotte County
94-027-P4A	Punta Gorda Nature Park	City of Punta Gorda
94-020-P4A	Amberjack Slough	Charlotte County
96-008-P?A	Charlotte Harbor Flatwoods Addition	Charlotte County
98-026-PSA	Oyster Creek Park - Dunwoody	Charlotte County
98-025-PSA	Sunrise Park	Charlotte County
99-013-P9A	Englewood Beach	Charlotte County
99-064-P9A	San Casa	Charlotte County

Project#	Project Name	Recipient
Charlotte (Continued)		
01-018-FF1	Bayshore Linear Park	Charlotte County
01-024-FF1	Cedar Point Park	Charlotte County
01-026-FF1	South County Regional Park	Charlotte County
01-063-FF1	Tippecanoe Scrub Environmental Park, Ph II	Charlotte County
03-091-FF3	Cedar Point Park Phase III	Lemon Bay Conservancy
04-004-FF4	Amberjack Scrub Environmental. Park Ph I	Charlotte County
05-020-FF5	Bayshore Park Addition Phase I	Charlotte County
08-014-FFS	Buck Creek Preserve	Charlotte County

Citrus

95-015-P56	Wallace Brooks/Lake Henderson	City of Inverness
95-016-P56	Cooter Pond	City of Inverness
96-002-P?A	Nature Coast Environmental Center	City of Crystal River
01-138-FF1	Kings Bay	City of Crystal River
08-088-FFS	Three Sisters Springs	City of Crystal River

Clay

96-022-P?A	Keystone Beach - Smysor Park	City of Keystone Heights
02-045-FF2	Green Cove Springs Nature Preserve	City of Green Cove Springs
02-097-FF2	Moccasin Slough	Clay County
04-078-FF4	Camp Chowenwaw	Clay County
05-050-FF5	Green Cove Springs Nature Preserve	City of Green Cove Springs

Collier

94-023-P4A	Master Mitigation Preserve	Collier County
95-017-P56	Lake Avalon County Park	Collier County
01-040-FF1	The Naples Preserve	City of Naples
03-018-FF3	Lely Mitigation Park	Collier County
03-073-FF3	Preserve the Preserve	Collier County
04-042-FF4	Goodland Harbor	Collier County
05-027-FF5	Gordon River Water Quality Park	Collier County
06-043-FF6	Gordon River Greenway Park	Collier County

Columbia

94-001-P4A	Alligator Lake	Columbia County
------------	----------------	-----------------

Desoto

Dixie

02-096-FF2	Joe Henry Anderson Senior Park	Dixie County
08-063-FFS	Mershon Williams Yellow Jacket Landing	Dixie County

Duval

91-046-P1A	Cedar Point	City of Jacksonville
92-031-P2A	Ortega Stream Valley Park	City of Jacksonville
92-032-P2A	Blue Cypress	City of Jacksonville
93-006-P3A	County Dock Historical Park	City of Jacksonville
95-051-P56	Intracoastal Waterway Park	City of Atlantic Beach

Project#	Project Name	Recipient
Hardee		
98-001-PBA	Peace River Park	City of Wauchula
Hendry		
Hernando		
93-012-P3A	Cypress Lakes	Hernando County
95-029-P56	The Good Neighbor Trail	City of Brooksville
98-053-PBA	Cypress Lakes Preserve Addition	Hernando County
Highlands		
94-042-P4A	Sun 'n Lakes Preserve	Highlands County
Hillsborough		
91-053-P1A	Cypress Creek Preserve	Hillsborough County
92-038-P2A	Riverhills Park Addition	City of Temple Terrace
92-039-P2A	Temple Terrace Riverfront Park	City of Temple Terrace
92-041-P2A	Cypress Street Restoration Park	Hillsborough County/City of Tampa
93-018-P3A	Blackwater Creek Preserve	Hillsborough County
94-009-P4A	Blackwater Hammock	City of Tampa
95-027-P56	Massie/Zack Park and Preserve	City of Plant City
95-044-P56	Apollo Beach Park	Hillsborough County
95-045-P56	Flynn Lake Nature Park	Hillsborough County
96-010-P?A	Sterling Downs	Hillsborough County
98-047-PBA	New Tampa Flatwoods	City of Tampa
98-048-PBA	Fort Brooke Park	City of Tampa
98-054-PBA	Alafia Scrub	Hillsborough County
99-010-P9A	Cypress Creek Preserve - Phase I	Hillsborough County
99-026-P9A	Ribbon of Green	City of Tampa
00-032-P10	Riverhills Park Addition	City of Temple Terrace
00-045-P10	Fort Brooke Park Addition	City of Tampa
01-048-FF1	Triple Creek Greenway	Hillsborough County
01-049-FF1	Town 'n Country	Hillsborough County
02-073-FF2	Fish Hawk Creek	Hillsborough County
02-093-FF2	Fort Brooke - Phase III	City of Tampa
03-081-FF3	River Tower Park	City of Tampa
03-083-FF3	South MacDill 48	City of Tampa
04-032-FF4	Rocky Creek Trails	Hillsborough County
03-015-FF3	Alafia River - Phase I	Hillsborough County
04-029-FF4	Alafia River - Phase II	Hillsborough County
04-029-FF4	Alafia River - Phase II	Hillsborough County
06-019-FF6	Triple Creek Greenway - Phase I	Hillsborough County
08-022-FFB	Lake Dan Preserve - Phase I	Hillsborough County
11-046-FF11	Lake Dan Preserve - Phase I	Hillsborough County
Holmes		
96-035-P?A	Wrights Creek Site	Holmes County
Indian River		
92-018-P2A	Wabasso Scrub	Indian River County
93-002-P3A	Prang Island	Indian River County/ City of Vero Beach

Project#	Project Name	Recipient
Indian River (Continued)		
95-025-P56	AGC Industrial Tract	City of Sebastian/ Indian River County
94-032-P4A	Sebastian Scrub	City of Sebastian/ Indian River Co
96-043-P?A	St. Sebastian PUD	Indian River County/ City of Sebastian
96-044-P?A	Round Island South	Indian River County
99-055-P9A	Oslo Riverfront South	Indian River County
98-057-PBA	Harmony Oaks	Indian River County
98-058-PBA	Oyster Bar Salt Marsh	Indian River County
99-056-P9A	North Sebastian C.A. Addition	Indian River County
01-055-FF1	Hallstrom Farmstead	Indian River County
01-154-FF1	Lost Tree Island	Indian River County/ Town of Indian River Shores/ and City of Vero Beach
02-058-FF2	Kroegel Homestead	Indian River County
03-084-FF3	Orea South Link	Indian River County
03-044-FF3	St. Sebastian River Greenway	Marine Resources Council
04-025-FF4	Ansin Tract	Indian River County
05-038-FFS	Russell Grove River Buffer	Indian River County
06-037-FF6	ORCA Diamond Tract	Indian River County
07-030-FF?	Fellsmere Trailhead Preserve	City of Fellsmere
07-039-FF?	South Prong Preserve	Indian River County
05-039-FFS	Jones' Pier	Indian River County
Jackson		
95-077-P56	Merritt's Mill Pond	Jackson County
03-066-FF3	Marianna Performing Arts Park	City of Marianna
Jefferson		
Lafayette		
Lake		
94-029-P4A	Minneola Park & Lake Scenic Trail	City of Minneola
95-041-P56	Lake Dora Recreation Park	City of Tavares
96-007-P?A	Old Dixie Highway Park	Town of Lady Lake
96-015-P?A	Tavares Elementary School Park	City of Tavares
03-086-FF3	PEAR Park Gateway	Lake County
04-030-FF4	Ferndale Preserve on Lake Apopka	Lake County
03-104-FF3	Leesburg Greenway Trail	City of Leesburg
03-104-FF3	Leesburg Greenway Trail	City of Leesburg
04-028-FF4	Mount Dora Rec. & Nature Park	City of Mount Dora
07-056-FF?	Inland Groves	City of Clermont
08-070-FFB	Inland Groves, Phase I	City of Clermont
Lee		
91-007-P1A	Pine Island Eagle Habitat	Lee County
92-015-P2A	Hickey Creek Mitigation Park	Lee County
93-019-P3A	Silver Key	City of Sanibel
95-003-P56	Gulfside Park Addition	City of Sanibel
96-046-P?A	Cultural and Environmental Learning Center	Town of Fort Myers Beach

Project#	Project Name	Recipient
Lee (Continued)		
99-029-P9A	East Riverside Neighborhood Park	City of Ft. Myers
01-031-FF1	Caloosahatchee Creeks Preserve	Lee County
01-039-FF1	Pond Apple Park	City of Sanibel
02-072-FF2	San Carlos Bay - Bunche Beach Preserve	Lee County
02-098-FF2	Newton Beach Park	Town of Ft. Myers Beach
03-059-FF3	City of Bonita Springs Island Park	City of Bonita Springs
03-060-FF3	Prairie Pines Preserve Addition	Lee County
04-031-FF4	Wild Turkey Strand Preserve	Lee County
08-012-FFB	Galt Preserve	Lee County
07-047-FF?	Pine Island at Matlacha Pass	Sarasota Conservation Foundation

Leon		
94-034-P4A	Lafayette Heritage Trail	City of Tallahassee
95-034-P56	Governor's Park	City of Tallahassee
95-037-P56	Lake Munson Preserve	Leon County
95-036-P56	Okeehoopkee Prairie	Leon County
99-083-P9A	Timberlane Ravine	City of Tallahassee
00-035-P10	Jackson View	Leon County
01-152-FF1	St. Marks Headwaters	Leon County
02-110-FF2	Tallahassee Junction	City of Tallahassee
04-056-FF4	Magnolia Ravine	City of Tallahassee
04-067-FF4	Copeland Sink	Leon County / Apalachee Land Cons.
05-010-FF5	Capital Cascades Trail - Segment 4	City of Tallahassee
05-011-FF5	St. Marks Headwaters - Booth Phase I	Leon County
05-075-FF5	Timberlane Ravine Phase I	City of Tallahassee
05-010-FF5	Capital Cascades Trail - Segment4	City of Tallahassee
06-114-FF6	Dr. Charles Billings Greenway	City of Tallahassee
07-102-FF?	Fred George Greenway	Leon County
07-102-FF?	Fred George Greenway	Leon County
07-102-FF?	Fred George Greenway	Leon County

Levy		
92-003-P2A	Yankeetown W R Park	Town of Yankeetown
93-004-P3A	Yankeetown Wilderness Addition	Town of Yankeetown
98-102-PBA	Devil's Hammock Phase I	Levy County
00-018-P10	Withlacoochee Gulf Pathways	Town of Yankeetown
01-080-FF1	Cedar Key Cemetery Point Park	City of Cedar Key

Madison		
----------------	--	--

Manatee		
94-024-P4A	Manatee Headwaters at Duette	Manatee County
96-029-P?A	Palmetto Estuary Preservation Project	City of Palmetto
98-008-PBA	Riverview Pointe	Manatee County

Project#	Project Name	Recipient
Manatee (Continued)		
98-009-PBA	1912 Cortez Schoolhouse & Nature Preserve	Manatee County
98-006-PBA	Grassy Point Preserve	City of Holmes Beach
01-004-FF1	Bennett Park	Manatee County
02-006-FF2	Robinson Preserve	Manatee County
03-075-FF3	Moody Branch	Manatee County
04-041-FF4	The Conservatory	Manatee County
05-026-FF5	Hidden Harbour	Manatee County
07-001-FF?	Neal Preserve	Manatee County

Marion		
92-045-P2A	Silver Creek Property	Marion County
92-033-P2A	O'Neal Site	City of Ocala
95-033-P56	Dunnellon Municipal Park	City of Dunnellon
95-009-P56	Scott Springs	City of Ocala
98-043-PBA	Fort King	City of Ocala and Marion County
07-022-FF?	Blue Run of Dunnellon Park	City of Dunnellon

Martin		
91-031-P1A	Kiplinger Site	Martin County
91-029-P1A	Gomez Avenue	Martin County
92-036-P2A	Beachwalk/Pasleys	Martin County
92-035-P2A	Otter Creek	Martin County
93-014-P3A	Lake Okeechobee Ridge	Martin County
94-019-P4A	Rocky Point	Martin County
94-045-P4A	Stuart Beach Addition	Martin County
96-038-P?A	FIT Site	Martin County
98-045-PBA	Haney Creek	City of Stuart
99-022-P9A	Poppleton Creek Watershed	City of Stuart
00-011-P10	Santa Lucea	Martin County
01-081-FF1	Bonair Beach	Town of Jupiter Island
01-133-FF1	Delaplane Peninsula Blueway	Martin County Regional Land Trust
03-003-FF3	Bob Graham Beach Addition	Martin County
03-004-FF3	Jensen Beach	Martin County
03-092-FF3	Pal Mar East Phase I	Martin County
04-046-FF4	Pal Mar East Phase II	Martin County
08-047-FFB	Clifton S. Perry Beach	Martin County

Miami-Dade		
91-001-P1A	Deering Estates Addition	Miami-Dade County
94-040-P4A	Village Green	Village of Key Biscayne
95-039-P56	Oleta River Corridor	Miami-Dade County
96-037-P?A	County Line Scrub	Miami-Dade County
95-021-P56	Hattie Bauer Hammock	Miami-Dade County
98-028-PBA	Spring Garden Point on the Miami River	Miami-Dade County/City of Miami
98-046-PBA	Sunny Isles Beach Oceanfront Park	City of Sunny Isles Beach
98-023-PBA	Biscayne Coastal Wetlands	Miami-Dade County
00-022-P10	Tree Island Park	Miami-Dade County
00-053-P10	Pinecrest Parrot Jungle	City of Pinecrest
01-043-FF1	Deering Estate-Cutler Glade Rehydration Addition	Miami-Dade County

Project#	Project Name	Recipient
Miami-Dade (Continued)		
01-119-FF1	Boystown/Camp Matecumbe	Miami-Dade County
03-019-FF3	West Kendall District Park Addition	Miami-Dade County
05-042-FF5	C100/Bayfront Property (Haas)	Village of Palmetto Bay
06-025-FF6	Fem Isle Park Expansion	City of Miami
08-005-FFS	Doral North Park Phase I	City of Doral
Monroe		
91-041-P1A	Coco Plum Beach	Monroe County
93-001-CS1	Rate of Growth Controls	Monroe County
93-002-CS1	Recreational L.O.S. Standards	Monroe County
95-001-CS3	Recreation & Open Space Element	Monroe County
98-097-PBA	Berg Property	City of Key West
99-010-MCC	Monroe County Comprehensive Land Authority #10	Monroe County
99-011-MCC	Monroe County Comprehensive Land Authority #11	Monroe County
99-012-MCC	Monroe County Comprehensive Land Authority #12	Monroe County
99-013-MCC	Monroe County Comprehensive Land Authority #13	Monroe County
99-014-MCC	Monroe County Comprehensive Land Authority #14	Monroe County
99-015-MCC	Monroe County Comprehensive Land Authority #15	Monroe County
99-016-MCC	Monroe County Comprehensive Land Authority #16	Monroe County
99-017-MCC	Monroe County Comprehensive Land Authority #17	Monroe County
99-018-MCC	Monroe County Comprehensive Land Authority #18	Monroe County
99-019-MCC	Monroe County Comprehensive Land Authority #19	Monroe County
99-020-MCC	Monroe County Comprehensive Land Authority #20	Monroe County
99-021-MCC	Monroe County Comprehensive Land Authority #21	Monroe County
99-022-MCC	Monroe County Comprehensive Land Authority #22	Monroe County
99-002-MCC	Monroe County Comprehensive Land Authority #2	Monroe County
99-003-MCC	Monroe County Comprehensive Land Authority #3	Monroe County
99-004-MCC	Monroe County Comprehensive Land Authority #4	Monroe County
99-005-MCC	Monroe County Comprehensive Land Authority #5	Monroe County
99-006-MCC	Monroe County Comprehensive Land Authority #6	Monroe County

Project#	Project Name	Recipient
Monroe (Continued)		
99-007-MCC	Monroe County Comprehensive Land Authority #7	Monroe County
99-008-MCC	Monroe County Comprehensive Land Authority #8	Monroe County
99-009-MCC	Monroe County Comprehensive Land Authority #9	Monroe County
99-023-MCC	Monroe County Comprehensive Land Authority #23	Monroe County
99-024-MCC	Monroe County Comprehensive Land Authority #24	Monroe County
99-001-M.C.	Monroe County Comprehensive Land Authority #1	Monroe County
01-001-CS7	City of Key Colony Beach	Key Colony Bch
01-058-FF1	North Village Neighborhood Park	Village of Islamorada
03-034-FF3	Key West Botanical Gardens	City of Key West
05-009-FF5	Green Turtle Hammock	Village of Islamorada
04-001-FF4	Marathon Waterfront Park	City of Marathon
08-028-FFS	Key Tree Cactus	Village of Islamorada
Nassau		
92-011-P2A	North Beach Park	City of Fernandina Beach
95-018-P56	Seaside Park	City of Fernandina Beach
95-059-P56	Egan's Creek Greenway Phase I	City of Fernandina Beach
96-013-P7A	Egan's Creek Greenway Phase II	City of Fernandina Beach
01-025-FF1	Egan's Creek Greenway, Phase III	City of Fernandina Beach
03-041-FF3	Goffinsville - Nassau River Park	Nassau County
04-026-FF4	American Beach Historic Park	Nassau County
04-026-FF4	American Beach Historic Park - Nelson Parcels	Nassau County
Okaloosa		
94-014-P4A	Turkey Creekwalk - Barnett	City of Niceville
96-004-P7A	Oak Tree Park	City of Mary Esther
98-020-PSA	Okaloosa Island Marler Park	Okaloosa County
00-004-P10	Oak Tree Nature Park Phase I	City of Mary Esther
00-067-P10	Miracle Strip Park on the Sound	City of Fort Walton Beach
04-006-FF4	The Shore at Crystal Beach	City of Destin
08-007-FFS	Captain Royal Melvin Park	City of Destin
11-015-FF11	Turkey Creek Walk Park, Phase IV-Ruckel	City of Niceville
11-015-FF11	Turkey Creek Walk Park, Phase IV-Neal	City of Niceville
11-015-FF11	Turkey Creek Walk Park, Phase IV-Safe Mini Storage	City of Niceville
Okeechobee		

Project#	Project Name	Recipient
Orange		
93-009-P3A	Airport Lakes Park	City of Orlando
92-010-P2A	Kelly Park Expansion	Orange County
95-053-P56	Minnehaha Park Canal	City of Maitland
96-031-P?A	Oakland Community Nature Park	Town of Oakland
01-029-FF1	Eagle Nest Cornerstone Park	City of Orlando
01-056-FF1	Kelly Park Addition	Orange County
01-083-FF1	Parcel 105	Orange County
01-053-FF1	Orange County Natural Resource Center	Orange County
03-002-FF3	Ft. Christmas Community Park Addition	Orange County
04-051-FF4	Howell Branch Preserve - Phase I	City of Winter Park
11-012-FF11	Tucker Ranch Heritage Park	City of Winter Garden
11-014-FF11	Kelly Park 3rd Addition-Camp Joy Property	Orange County

Orange/Osceola		
91-009-P1A	Split Oak Mitigation Park	Orange County / Osceola County

Osceola		
95-011-P56	Lake Lizzie Recreation Park	Osceola County
98-065-PBA	Shingle Creek Recreational Preserve	Osceola County/City of Kissimmee
01-143-FF1	Shingle Creek Recreational Preserve North	Osceola County
03-029-FF3	Shingle Creek	Osceola County
03-030-FF3	Lake Tohopekaliga Park and Marina	Osceola County
06-015-FF6	Shingle Creek Recreational Preserve Center	Osceola County/City of Kissimmee

Palm Beach		
91-022-P1A	Seacrest Scrub	Palm Beach County/City of Boynton Beach
92-020-P2A	Osborne Site	City of Boca Raton
92-022-P2A	Olympia York/Serenoa Glades	City of Boca Raton
92-024-P2A	Section 16 Addition	City of West Palm Beach
93-008-P3A	Rosemary Scrub	Palm Beach Co/ City of Boynton Beach
93-015-P3A	Section 10 Addition	City of West Palm Beach
93-017-P3A	South Bay Park	City of South Bay
93-020-P3A	Hidden Valley North/Rosemary Ridge Preserve	City of Boca Raton
94-005-P4A	Delray Oaks	Palm Beach Co/City of Delray Beach
94-021-P4A	Section 15 Addition	City of West Palm Beach
95-007-P56	Sandoway House	City of Delray Beach/ Palm Beach County
95-046-P56	Juno Hills Oceanfront	Town of Juno Beach/ Palm Beach County
96-011-P?A	Frenchman's Forest	Palm Beach County/ City of Palm Beach Gardens

Project#	Project Name	Recipient
Palm Beach (Continued)		
98-066-PBA	Hungryland Slough Tract - Bee Line Corridor Natural Area	Palm Beach County
98-067-PBA	Bee Line Corridor Natural Area	Palm Beach County
99-015-P9A	High Ridge Scrub Addition	Palm Beach County
99-028-P9A	Bee Line Corridor Phase I	Palm Beach County
00-029-P10	Harbor View Park	Town of Jupiter
01-016-FF1	Section 16 West Addition to the West Palm Beach Preserve	City of West Palm Beach
01-033-FF1	North Jupiter Flatwoods	Palm Beach County / Town of Jupiter
01-035-FF1	Overlook Scrub	Palm Beach County / Town of Hypoluxo
01-036-FF1	Lake Park Scrub Natural Area	Palm Beach County and Town of Lake Park
01-037-FF1	Acreage Pines Natural Area	Palm Beach County
01-100-FF1	Ombres Property	City of West Palm Beach
02-051-FF2	Blue Lake Scrub	Palm Beach County / City of Boca Raton
02-100-FF2	Limestone Creek	Palm Beach County
03-105-FF3	Cypress Creek Natural Area	Palm Beach County
04-023-FF4	Jaycee Park Acquisition	City of Boynton Beach
04-049-FF4	Cypress Creek Natural Area	Palm Beach County
04-062-FF4	Old School Square Addition	City of Delray Beach
05-028-FF5	Indian Lakes Natural Area	Palm Beach County
06-017-FF6	Delaware Scrub Natural Area	Town of Jupiter and Palm Beach County
06-041-FF6	Susan DuBois Kindt Estate	Palm Beach County
07-010-FF?	Cypress Creek Preserve, Phase III	Palm Beach County
08-001-FFB	Cypress Creek Natural Area, Phase IV	Palm Beach County
11-001-FF11	Cypress Creek Natural Area, Phase V	Palm Beach County

Pasco		
91-039-P1A	Boyce/Wetstone	Pasco County
94-007-P4A	Pithlachascotee River Park	City of New Port Richey
95-067-P56	Port Richey Waterfront Park	City of Port Richey
04-014-FF4	Strauber Memorial Highway Coastal Park	Pasco County
07-089-FF?	Upper Pithlachascotee River Preserve	Pasco County
08-039-FFB	Pasco Palms	Pasco County
11-047-FF11	Morsani Ranch	Pasco County

Pinellas		
91-002-P1A	North Anclote	City of Tarpon Springs
92-007-P2A	Brooker Creek	Pinellas County
93-023-P3A	Redington Shores Nature Refuge	Town of Redington Shores
94-004-P4A	Brooker Creek Enhancements	Pinellas County
94-010-P4A	Waterfront Park	City of Gulfport
94-011-P4A	Indian Shores Nature Refuge	Town of Indian Shores

Project#	Project Name	Recipient
Pinellas (Continued)		
94-017-P4A	Bayside Park	City of Belleair Beach
95-001-P56	South Pasadena Habitat Extension	City of South Pasadena
95-004-P56	Marina Park Addition	City of Safety Harbor
95-022-P56	Indian Rocks Beach Nature Preserve	City of Indian Rocks Beach
96-026-P?A	McKay Creek Greenway	Pinellas County
98-005-PSA	Mobbly Bayou Wilderness Preserve	City of Oldsmar
99-007-P9A	Sunset Vista Trailhead	City of Treasure Island
99-024-P9A	Madeira Beach Causeway	City of Madeira Beach
00-026-P10	Mobbly Bayou	City of Oldsmar and Pinellas County
00-042-P10	Clam Bayou Park Expansion	City of St. Petersburg
01-015-FF1	Kapok Wetland and Floodplain Restoration	City of Clearwater
01-022-FF1	Wall Springs	Pinellas County
01-144-FF1	Historic Bayview	City of Clearwater
02-035-FF2	Wall Springs Coastal Addition I	Pinellas County
03-006-FF3	Brooker Creek Preserve	Pinellas County
03-080-FF3	Mobbly Bayou Preserve	City of Oldsmar/Pinellas Co
04-021-FF4	Kumar Property	City of Oldsmar
05-017-FFS	Wall Springs Coastal Addition	Pinellas County
07-097-FF?	Weaver Park	City of Dunedin
07-054-FF?	Lake Chautauqua Equestrian & Nature Trail	City of Clearwater
07-097-FF?	Weaver Park - Colonial Park Parcel	City of Dunedin
08-009-FFS	Wall Springs Coastal Addition IV	Pinellas County
11-020-FF 11	Brooker Creek Preserve Wilde Lands	Pinellas County
Polk		
92-002-P2A	Lake Bonny Community Park	City of Lakeland
92-006-P2A	Lake Howard	City of Winter Haven
95-028-P56	Mount Pisgah - Peace River	Polk County
96-001-CS4	Green Swamp Greenway, Phase I	Polk County
99-049-P9A	Lakeland Highlands Scrub	Polk County
04-033-FF4	Lake Hartridge Nature Park	City of Winter Haven
04-075-FF4	MackKay Garden and Lakeside Preserve	City of Lake Alfred
05-008-FFS	Bok Tower Sanctuary	Green Horizon Land Trust, Inc.
06-020-FF6	Gator Creek Preserve	Polk County
05-008-FFS	Bok Tower Sanctuary - Marks Parcel	Green Horizon Land Trust, Inc.
05-008-FFS	Bok Tower Sanctuary - Moore, Yoars & Pease Parcel	Green Horizon Land Trust, Inc.
05-008-FFS	Bok Tower Sanctuary - SR Estate/Colburn Parcels	Green Horizon Land Trust, Inc.
05-008-FFS	Bok Tower Sanctuary - Story Parcel	Green Horizon Land Trust, Inc.
Putnam		
01-136-FF1	Melrose Heritage Park	Putnam County

Project#	Project Name	Recipient
Putnam (Continued)		
01-137-FF1	Tanglewylde Center	Putnam County
08-020-FFS	Georgetown Riverside Park	Putnam County
08-084-FFS	Nine Mile Swamp Park and Trail	Putnam County / Putnam Land Conservancy
Santa Rosa		
94-012-P4A	Riverwalk Expansion	City of Milton
00-082-P10	Russell Harbor Landing Expansion	City of Milton
Sarasota		
92-009-P2A	Myakkahatchee Creek Environmental Park	City of North Port
93-003-P3A	Myakkahatchee Creek Environmental Park III	City of North Port
94-025-P4A	Myakkahatchee Creek Environmental Park	City of North Port
96-041-P?A	Hog Creek Habitat Restoration	City of Sarasota
Sarasota (Continued)		
98-072-PSA	Oak Shores Reclamation	Sarasota County
99-076-P9A	Lemon Bay Preserve	Sarasota County
99-077-P9A	North River Road Preserve	Sarasota County
00-019-P10	Manasota Scrub Preserve	Sarasota County
01-008-FF1	Pocono Trails Preserve	Sarasota County
01-045-FF1	Venice Gulf View Park	City of Venice
01-028-FF1	Curry Creek Preserve	Sarasota County
02-027-FF2	Red Bug Slough	Sarasota County
02-034-FF2	Wilson Family Park	Sarasota County
05-018-FFS	Bay Preserve at Osprey	Sarasota Conservation Foundation
05-012-FFS	Lemon Bay Park Addition	Sarasota County
05-014-FFS	Sleeping Turtles	Sarasota County
06-004-FF6	Blackburn Point Park Addition	Sarasota County
08-024-FFS	Legacy Park	City of Venice
Seminole		
95-020-P56	Twin Rivers II Preserve	City of Oviedo
03-055-FF3	Jetta Point Property	Seminole County
03-088-FF3	Winter Miles	City of Oviedo
06-008-FF6	St. Johns Historic Property (Lansing Property)	Seminole County
St. Johns		
98-003-PSA	Southeast Intracoastal Waterway Park	St. Johns County
99-002-P9A	St. Johns River Park	St. Johns County
01-009-FF1	Moultrie Creek/Intracoastal Tract	St. Johns County
03-038-FF3	Ft. Mose Historic State Park Addition	St. Johns County
04-064-FF4	Canopy Shores	St. Johns County
05-032-FFS	Nease Beachfront Park	St. Johns County
05-034-FFS	Beluthahatchee Park	St. Johns County
05-034-FFS	Beluthahatchee Park	St. Johns County
06-033-FF6	Mussallem Beachfront Park	St. Johns County
06-034-FF6	Vilano Beach Park	St. Johns County

Project#	Project Name	Recipient
St. Johns (Continued)		
08-018-FF8	Ocean Hammock Park	City of St. Augustine Beach
08-019-FF8	Usina Intracoastal Park	St. Johns County
08-044-FF8	Cora C. Harrison	Town of Hastings
08-044-FF8	Cora C. Harrison	Town of Hastings
St. Lucie		
93-024-P3A	Bear Point Sanctuary	St. Lucie County
94-003-P4A	Kings Island Preserve	St. Lucie County
94-022-P4A	Ocean Bay	St. Lucie County
95-031-P56	Brinkhaven at Oak Hammock Acres	City of Port St. Lucie
95-052-P56	Indrio North Savannas	St. Lucie County
95-062-P56	Walton Scrub Homestead	St. Lucie County/City of Port St. Lucie
95-065-P56	Middle Cove Park	St. Lucie County
96-017-P?A	St. Lucie Pinelands	St. Lucie County
98-071-P8A	Bluefield Ranch	St. Lucie County
99-001-P9A	Pepper Park	St. Lucie County
99-020-P9A	Paleo Hammock	St. Lucie County
99-025-P9A	North Fork Addition	St. Lucie County
01-023-FF1	Westmoreland River Park	City of Port St. Lucie and St. Lucie County
01-067-FF1	Sheraton Plaza Preserve	St. Lucie County
01-069-FF1	Indrio Scrub Preserve	St. Lucie County
01-075-FF1	Ancient Oaks	St. Lucie County
01-082-FF1	St. Lucie Village Heritage Park	Town of St. Lucie Village
01-098-FF1	North Fork of the St. Lucie River Phase I	St. Lucie County
02-056-FF2	Ten Mile Creek East	St. Lucie County
02-071-FF2	North Fork of the St. Lucie River - Phase 111	St. Lucie County
02-091-FF2	Indrio Blueway Buffer	St. Lucie County
03-069-FF3	Capron Trail Park	St. Lucie County
04-044-FF4	Paleo Hammock Addition	St. Lucie County
03-079-FF3	Ten Mile Creek West	St. Lucie County
05-069-FFS	Hackberry Hammock	St. Lucie County
06-060-FF6	Indrio North Savannas Two	St. Lucie County
05-069-FFS	Hackberry Hammock	St. Lucie County
04-045-FF4	Heathcote Botanical Park - City Parcels	St. Lucie County
04-045-FF4	Heathcote Botanical Park - Stewart Parcel	St. Lucie County
07-088-FF?	Moore's Creek Linear Park	City of Fort Pierce
07-080-FF?	Jetty Oceanfront Park Expansion	City of Fort Pierce
07-027-FF?	Harbor Branch Preserve	St. Lucie County
08-057-FF8	Becker Preserve	St. Lucie County
11-054-FF 11	Petravice Preserve (North Fork St Lucie River Phase Four)	St. Lucie County
Sumter		
93-010-P3A	Lake Panasoffkee Headwaters	Sumter County
Suwannee		
92-030-P2A	Little River Springs	Suwannee County
08-066-FF8	Live Oak Heritage Park	City of Live Oak
08-066-FF8	Live Oak Heritage Park-CSX Parcel	City of Live Oak

Project#	Project Name	Recipient
Taylor		
07-051-FF?	Keaton Beach Coastal Park	Taylor County
Union		
Volusia		
91-042-P1A	Lake Beresford	Volusia County
91-043-P1A	Colby/Alderman	Volusia County
92-023-P2A	Indian River Lagoon Preserve	City of New Smyrna Beach
93-021-P3A	Gemini Springs	Volusia Co
94-033-P4A	Ponce Preserve	Town of Ponce Inlet
94-038-P4A	Boy Scouts Property	City of Deland
95-024-P56	Painters Pond	City of Deland
96-039-P?A	Green Springs	Volusia County
98-010-P8A	North Peninsula In-holdings	Volusia County
98-036-P8A	Lake Helen Greenway	City of Lake Helen
98-112-P8A	North Beach Community Park	City of New Smyrna Beach
01-032-FF1	Daytona Beach Historic Pier & Boardwalk	City of Daytona Beach
01-071-FF1	Doris Leeper Spruce Creek	Volusia Co
01-129-FF1	Town Center	City of Port Orange
02-003-FF2	Catholic Diocese Tract	Volusia Co
02-094-FF2	Town Center Marcantonio Property	City of Port Orange
03-064-FF3	Ponce Preserve Inlet	Town of Ponce Inlet
04-005-FF4	Doris Leeper Spruce Creek - Phase I	Volusia County
04-060-FF4	Timucuan Oaks Botanical Gardens	Town of Ponce Inlet
04-018-FF4	Russell Property	City of Port Orange
07-020-FF?	Esther Street Beachfront Park	City of New Smyrna Beach
08-004-FF8	Stanaki Property	City of Port Orange
Wakulla		
93-029-P3A	Shell Point Beach	Wakulla County
94-041-P4A	Purify Creek Acquisition Project	Wakulla County
98-110-P8A	Panacea Mineral Springs	Wakulla County
07-057-FF?	Big Bend Maritime Center	Wakulla County
Walton		
02-099-FF2	Garfield Access Addition	Walton County
03-001-FF3	Stallworth Lake Preserve	Walton County
08-006-FF8	Town Center Park & Preserve	Walton County
Washington		
96-034-P?A	Holmes Creek Boat Ramp	Washington County
Stan Mayfield Working Waterfront Projects		
08-002-WW1	Blue Crab Cove	Brevard County
08-003-WW1	Sebastian Working Waterfront Collaborative	City of Sebastian
08-004-WW1	Eastpoint Working Waterfront	Franklin County
08-006-WW1	Apalachicola Boatworks	City of Apalachicola

SUMMARY OF FINANCIAL ACTIVITIES

Florida Communities Trust

FLORIDA COMMUNITIES TRUST PROGRAM (FCT) OPERATIONS

The Program was funded from the Land and Recreation Operation Services' Operating Budget within DEP.

Total Cost of FCT Operations during FY17/18

Salaries and Benefits	\$295,311.98
Other Personal Services (temporary employees or services)	\$23,595.78
Expenses	\$7,398.91
Indirect Cost	\$133,421.95
TOTAL	\$459,728.62

FLORIDA FOREVER PROGRAM

06/30/2017 YEAR END BALANCE	\$18,425,644.39
<u>2017-2018 Revenue - Florida Forever Appropriation</u>	\$0
<u>2017-2018 Expenditures</u>	
Returns & Refunds	\$0
Expenditures for Land Acquisition Activities (Parks and Open Space)	\$(3,484,898.31)
Expenditures for Land Acquisition Activities (Stan Mayfield Working Waterfronts)	\$0
LESS 2017-2018 EXPENDITURES	\$(3,484,898.31)
6/30/2018 YEAR END BALANCE	\$14,940,746.08

Florida Communities Trust Board Members

David Clark



David Clark is the Deputy Secretary of Land and Recreation at the Florida Department of Environmental Protection (DEP). He first began his tenure with DEP in 2004, where he worked in the Division of State Lands and then the Office of Cabinet Affairs until 2010. After four years in the U.S. Army as an officer with the 82nd Airborne Division, America's Guard of Honor, David returned to DEP in 2014, serving as both Director of Cabinet Affairs and Deputy Director of State Lands. From 2016 to 2017, David served DEP as the Director of State Lands, a position confirmed by the Governor and Cabinet. David's leadership experience in the Army, his tenure at DEP, and his education, which includes a real estate license and degrees in business administration and accounting, assist him in leading the Florida State Park System and the Division of State Lands. In his time at DEP, David has worked closely with Florida's cabinet agencies and numerous stakeholders, including the military and environmental groups, to accomplish many strategic acquisitions that have helped ensure the protection of Florida's land and water resources while balancing recreational opportunities.

Lynda Bell



Lynda Bell served on the Miami-Dade County Commission from 2010-2014 where she was the Vice Chair from 2012-2014. She has chaired the Finance Committee, the Value Adjustment Board, the Sports Commission and the Port of Miami Committee. Lynda was also active on both Florida Association of Counties and National Association of Counties.

Prior to serving on the County Commission, Lynda served as a Councilwoman, Vice Mayor and the first and only female Mayor of the city of Homestead. She has been recognized for her many accomplishments, including the "In the Company of Women" award in the governmental category. She received the "I am Blessed" award, was recognized by the Association of Public Administrators with the "Woman of Distinction" award, won the Chamber of Commerce "Athena" award, and was given the Miami-Dade Farm Bureau Advocacy award.

Serving FCT as the Former Elected Official of a County Government, Lynda has a Bachelor's of Science in Supervision and Management from Miami-Dade College School of Business and has been married to Mark Bell for 33 years. They have three daughters and 12 grandchildren and have resided in Homestead, Fla., for 38 years.

VACANT

Former Elected Official of a Metropolitan Municipal Government

Greg Jones



Gregory Jones has over 18 years of experience in resort development and management in the State of Florida. He is currently the Senior Project Manager for WCI Communities Inc., a Lennar Company. During the last decade, he has been actively involved in developing a balance between sustainable growth in his community while establishing a healthy environment to ensure a long-term habitat plan for the endangered Perdido Key Beach Mouse. In addition, Gregory has been an active participant of local community efforts by currently residing on the Tourism Development Council and West End Advisory Boards

for Escambia County in addition to serving as a current board member on six community residential boards. Gregory serves on the FCT Board as Representative of the Development Industry.

Erick Lindblad



Erick Lindblad has served as the Executive Director of the Sanibel-Captiva Conservation Foundation (SCCF) since 1986. He has been instrumental in SCCF's acquisition of over 2,000 acres of Wildlife Preserve areas on and around Sanibel and Captiva. In 2002, he oversaw the establishment of SCCF's Marine Laboratory.

Erick has coordinated and actively participated in land management activities including invasive non-native plant control, prescribed burning (Division of Forestry Burn Manager Certification), gopher tortoise management and surface water management projects. Land acquisition has been accomplished by a variety of means, including fee simple, bargain sale, development agreement and donation.

As part of his commitment to the sustainable development of Southwest Florida, Erick served on Conservation 20/20, Lee County's Conservation Land Acquisition and Stewardship Advisory Council and the Land Management Subcommittee. He also was appointed by the Lee County Board of County Commissioners to serve as the county's representative on the first Babcock Ranch Inc. Board, which worked to develop the initial management plan for the state's 71,000-acre Babcock Ranch Preserve in Lee and Charlotte Counties.

He served on the Board of the International Osprey Foundation, the Caloosahatchee River Citizens Association and the Charlotte Harbor National Estuary Program Technical Advisory Committee.

Erick has served on various City of Sanibel committees over the years including the Budget Review Committee, Wildlife Committee, Interior Wetlands Study Committee, and the Algae Task force. He was awarded the Walter Klie Lifetime Achievement Award from the Sanibel-Captiva Islands Chamber of Commerce and Citizen of the year by The Committee of the Islands. In 2014 SCCF was awarded Florida Conservation Organization of the Year by the Florida Wildlife Federation.

Prior to his tenure at SCCF, he served as Director of Newfound Harbor Marine Institute at Seacamp on Big Pine Key, FL from 1979 to 1986. He graduated in 1974 from Millikin University in Illinois with a B.A. in Biology.

He and his wife Ellen have two children and 5 grandsons.



**Florida Department of Environmental Protection
Florida Communities Trust
3900 Commonwealth Boulevard, MS 115
Tallahassee, Florida 32399-3000
www.FloridaDEP.gov**

**Rick Scott, Governor
Noah Valenstein, Secretary**

