

FLORIDA DEPARTMENT OF CORRECTIONS

Florida's Criminal Punishment Code: A Comparative Assessment

September 2015



Julie L. Jones, Secretary

*A report to the Florida Legislature detailing Florida's
Criminal Punishment Code*

Prepared by:
Florida Department of Corrections
Bureau of Research and Data Analysis
501 South Calhoun Street
Tallahassee, FL 32399-2500

TABLE OF CONTENTS

Executive Summary 3

I. Introduction..... 4

1. Overview of Florida’s Sentencing Policies 5-11

2. Narrative on Introductory Statistics..... 12

3. Introductory Statistics..... 13-19

II. Offense to Sentence Date Lag Time Comparison 20

1. Narrative on the “Lag” Issue 21-22

2. Comparative Statistics 23-27

III. Comparative Description 28

1. Narrative on Comparative Statistics 29-32

2. Recommended Sanction and Sanction Imposed 33-36

3. Sanction Imposed by Circuit/County 37-44

4. Sanction Imposed by Offense Type/Severity Level 45-47

5. Prior and Additional Offenses 48-50

6. Mitigation 51-54

Appendices

Total Admissions to Prison by County of Commitment 55

Total Admissions to Prison by Circuit of Commitment 56

Offense Severity Ranking Chart 57-78

Criminal Punishment Code Scoresheet..... 79-82

Florida's Criminal Punishment Code: A Comparative Assessment

Offenses Committed On or After October 1, 1998

Executive Summary

In 1997, the Florida Legislature created a new sentencing structure, the Florida Criminal Punishment Code (“Code”). The Code is Florida’s primary sentencing policy. It is unique in that it has features of both structured and unstructured sentencing policies.

From a structured sentencing perspective, the Code provides for a uniform evaluation of relevant factors present at sentencing, such as the offense before the court for sentencing, prior criminal record, victim injury, and others. It also provides for the lowest permissible sentence that the court must impose in any given sentencing event, absent a valid reason for departure.

The Code also contains some characteristics of unstructured sentencing, such as broad judicial discretion and the allowance for the imposition of lengthy terms of incarceration.

The Code is effective for offenses committed on or after October 1, 1998 and is unlike the state’s preceding sentencing guidelines, which provided for narrow ranges of permissible sentences in all non-capital sentencing events.

The intent of this report is to address the requirement set forth in Florida Statute 921.002(4)(a) to analyze sentencing events under the Florida Criminal Punishment Code. Each year, the Department of Corrections is required to report on trends in sentencing practices and sentencing score thresholds, and provide an analysis of the sentencing factors considered by the courts. **In this report, a comparison is made between the Criminal Punishment Code sentences received in FY 2013-2014 and FY 2014-2015.**

Since January 1, 1994, the Florida Department of Corrections has collected almost 2.4 million scoresheets on felony offenders sentenced in Florida courts under the state’s Sentencing Guidelines and Criminal Punishment Code. This report describes the 103,144 Criminal Punishment Code scoresheets with sentence dates in FY 2014-2015 received by the Florida Department of Corrections through September 1, 2015, for felony offenses committed on or after October 1, 1998. It also compares 69,681 Criminal Punishment Code scoresheets received by the Florida Department of Corrections through September 1, 2015, for felony offenses committed on or after October 1, 2012 and sentence dates in Fiscal Year 2014-2015 with 67,669 Criminal Punishment Code scoresheets with offense dates on or after October 1, 2012 and sentence dates in Fiscal Year 2013-2014.

PART I

INTRODUCTION

Overview of Florida's Sentencing Policies

History of Sentencing Policy

Unstructured Sentencing

Prior to October 1, 1983, courts sentenced in accordance with the provisions of law that permitted a wide range of judicial discretion in the sentencing decision. Sanctions ranged from a fine up to state prison incarceration. The statutory maximum penalties of incarceration in state prison were:

- Five years for a felony of the third degree;
- Fifteen years for a felony of the second degree;
- Thirty years for a felony of the first degree, and;
- Life for a life felony.

This was a form of an indeterminate sentencing policy because most offenders sentenced to prison were, by law, parole eligible. Parole was a discretionary early release policy, which obviously had a significant impact upon both the percentage and the actual amount of time served.

Structured Sentencing/Sentencing Guidelines

The Florida Sentencing Guidelines represent the state's structured policy with respect to the sentencing of non-capital felony offenders. There are three distinct versions of the guidelines currently in operation in Florida. They each:

- Provide for a uniform set of standards to guide the sentencing court in sentencing decisions;
- Evaluate relevant factors present at sentencing relating to the offense or offenses and the defendant's prior criminal behavior;
- Are attempts to provide for "truth in sentencing" and eliminate unwarranted disparity in sentencing decisions;
- Focus on ensuring that the punishment is commensurate with the offenses before the court for sentencing, and;
- Are mathematically based and provide a means to address several policy areas.

Every assessment of points reflects a policy statement regarding the relative severity of a criminal behavior. Each policy is represented on its respective scoresheet, which must be completed for each felony defendant prior to sentencing.

The 1983 Sentencing Guidelines

Due to concerns regarding actual and percent of time served as well as concerns regarding a lack of uniformity in sentencing, the 1983 Florida Sentencing Guidelines were enacted October 1, 1983 and parole eligibility was abolished for almost all offenses committed after that date. These guidelines are currently in effect for all non-capital felony offenses that were committed on or after October 1, 1983 and before January 1, 1994.

The 1983 Sentencing Guideline structure was comprised of nine separate worksheets for specified offense categories such as murder, sexual offenses, drug offenses, etc. All offenses were contained in one of these categories.

Within each worksheet, points were assessed for offenses to be sentenced and prior record offenses based on the number of offenses and each offense's felony degree. Assessments were made for legal status and victim injury. Total scores fell into sentencing ranges or cells, for each worksheet. The least severe cell provided for a non-state prison sanction and the most severe cell provided for 27 years to life in prison. Departure sentences were permissible as long as written reasons were provided.

Several factors eventually eroded the integrity of the "truth in sentencing" aspect of the 1983 sentencing guidelines. Some of these factors included an epidemic of "crack" cocaine-related offense activity, which resulted in an unanticipated impact upon correctional resources, the passage of unfunded mandatory minimum sentence legislation, and significant growth in the population of the State of Florida.

As a result of these and other factors, the percentage of time served and actual time served declined. By 1989, the average percentage of time served was 34 percent. This lack of system integrity was the impetus for the creation of a new sentencing guideline structure.

The 1994 Sentencing Guidelines

The 1994 Sentencing Guidelines were enacted through the passage of the “Safe Streets Act.” These guidelines were created with the recognition that prison resources are finite and that the use of state incarceration should be focused upon offenders who commit serious or violent offenses, or who offend repetitively. The 1994 guidelines repealed the grant of basic gain time, evidencing the legislature’s re-commitment to “truth in sentencing.” These sentencing guidelines are in effect for all non-capital felony offenses committed on or after January 1, 1994 and before October 1, 1995.

The structure of the 1994 Sentencing Guidelines has little similarity to the 1983 structure. The structure created attempted to resolve some of the problems inherent in the preceding structure, such as the nine separate worksheets, the lack of offense-specific detail and the issue of grouping crimes by category. The structure of the 1994 guidelines:

- Ranks all non-capital felonies in one of 10 offense severity levels. Level 1 is the least severe ranking and 10 reflects the most serious felonies.
- Each of the rankings has an associated point value in each of three elements subject to scoring: primary offense, additional offense(s), and prior record. Point values escalate as the rank increases. Every offense scored is provided its corresponding point value in these areas, with the emphasis of points lying in the area of the primary offense.
- Includes other policy levels through an assessment of points for a variety of other factors such as: victim injury, legal status, supervision violations, and others.

Under the 1994 structure, the total guidelines score determines the sanction and a range of length of sanction when state prison is applicable. There are basically three categories of sanction based upon total scores. There are ranges of score which:

1. Mandate a non-state prison sanction when the total score is 40 points or less.

2. Provide for discretionary prison or non-state prison sanction when the total score is greater than forty and less than 52 points.
3. Mandate a state prison sanction when the total score exceeds 52 points.

The length of prison is determined by subtracting 28 from the total sentence points to derive the total prison months.

The court has the discretion to increase or decrease the sanction by 25%. This provided for a relatively narrow range for the imposition of a guideline sentence.

The 1995 Sentencing Guidelines

The 1994 Sentencing Guidelines were significantly amended in 1995 through the passage of the Crime Control Act of 1995. The basic structure of the 1994 sentencing guidelines remained; however, point values were increased in a variety of areas and additional policy levers were created to provide for greater sanctions. The 1995 guidelines are in effect for offenses committed on or after October 1, 1995 through September 30, 1998.

The Higgs ruling stated that the use of the 1995 Sentencing Guidelines for offenses between October 1, 1995 and May 24, 1997 is unconstitutional. However, the 1995 Sentencing Guidelines are used for offense dates between May 25, 1997 and September 30, 1998.

The guidelines were slightly modified in both 1996 and 1997, again providing for increased sanctions and sanction length in certain instances.

The Criminal Punishment Code

The Criminal Punishment Code became effective for offenses committed on or after October 1, 1998. The guidelines are repealed for all offenses committed on or after October 1, 1998 but remain in effect for offenses committed prior to this date. The Code contains features of both structured and unstructured sentencing policies. It maintains many of the goals of guidelines sentencing. Compared to the guidelines however, the Code allows for greater upward discretion in sentencing, provides for increased penalties, and lowers mandatory prison thresholds.

- The Code significantly alters the sentencing policy in a variety of respects. One of the most notable changes is the significant broadening of upward discretion in the sentencing policy. Under the sentencing guidelines, the upward discretion was 25 percent above the state prison months determined by the calculation. Under the Code, the maximum sentence for any felony offense is determined by the statutory maximums as provided in Florida Statute (F.S.) 775.082.

<u>Felony Degree</u>	<u>Years in Prison</u>
Life Felony	Up to Life
1 st	Up to 30
2 nd	Up to 15
3 rd	Up to 5

- This has two effects that are divergent from the preceding guidelines. First, all felony offenders have the potential to receive a prison sentence, whereas many under the guidelines were by policy excluded from such a possibility. Second, the maximums of F. S. 775.082 usually will provide for far greater sentence lengths than were permissible under the guidelines.
- Another significant change is the determination when a prison sentence becomes mandatory under the new sentencing policy. The basic structure of the sentencing policy has not changed with respect to point determinations. Sentencing point thresholds for sentence calculations have, however, undergone significant revisions.
 1. If total points are equal to or less than 44, the lowest permissible sentence is a non-state prison sanction. (However, state prison up to the statutory maximum can be imposed.)
 2. If total points exceed 44, the minimum sentence is established by taking the total point value subtracting 28 and decreasing the remaining value by 25%. This end result value is the lowest permissible prison sentence in months.

This means that only those offenders scoring 44 or fewer points may receive a non-state prison sanction under the code. All others must receive a state prison sanction, absent downward departure from this structure. The threshold under the guidelines for mandatory prison incarceration was 52 points.

Department of Corrections Responsibilities

The department was provided a variety of responsibilities regarding the sentencing policy with respect to the 1994 and subsequent versions of the law. Florida Statute 921 requires the department to:

- Develop the scoresheet and any revisions of the scoresheet for approval by the Supreme Court and supply Sentencing Guidelines and Criminal Punishment Code scoresheets to the appropriate criminal justice entities in the state;
- Prior to July 1, 2001, the Department had a coequal responsibility to prepare scoresheets with the state attorneys. However, the Department of Corrections continued to complete scoresheets which had been ordered by the courts prior to July 1, 2001. In addition there were transitional issues involved in transferring this responsibility to the state attorneys. This resulted in 9.7% of scoresheets received during FY2001-02 having been prepared by the Department of Corrections;
- Assist the Criminal Justice Estimating Conference in estimating correctional impact of proposed changes to the code;
- Provide the Legislature by October 1 of each year a report detailing the rate of compliance of each Judicial Circuit in providing scoresheets to the department; and,
- Provide the Legislature an annual report detailing trends in sentencing and an analysis thereof by October 1 of each year.

The SAGES (Sentencing Analysis and Guidelines Entry Systems) database

The department developed a database in 1994 to be used as a mechanism to allow for the storage of completed scoresheets and allow for more accurate, legible and efficient scoresheet preparation.

This report is derived primarily from the information on sentencing scoresheets received by the department from the clerks of the courts and entered into SAGES.

The following should be considered when evaluating this and other information derived from this database:

- The information is compiled from a database containing sentencing scoresheets received by the Department of Corrections for offenses with dates of commission on or after January 1, 1994. The information is based on the scoresheets in the database with dates of sentence in Fiscal Year 2014-2015 and offenses on or after October 1, 1998, entered as of September 1, 2015.
- Because the rate of scoresheet submissions is never 100%, there is always information missing that could potentially affect the analysis. When this report was run, the statewide compliance rate was 76.5% for Fiscal Year 2014-2015.
- Though the Department retrieves and includes in the database omitted information from a scoresheet that is critical, no effort is made to correct preparation error or errors recorded on scoresheets regarding the sentence imposed. The department does not have the authority to amend an official court document. Conversely, there is a responsibility to record the information as received.

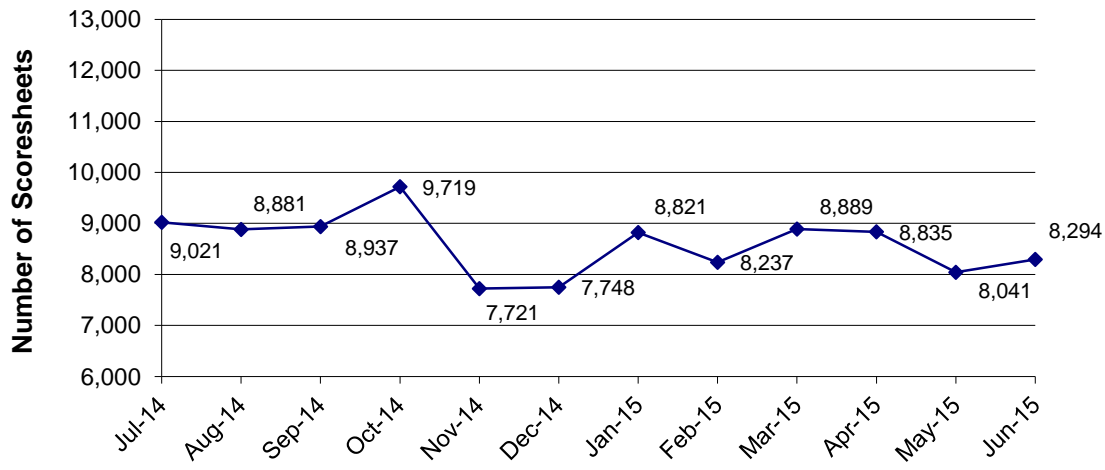
Introductory Statistics

FACT: *There were 103,144 Punishment Code scoresheets with offense dates on or after October 1, 1998 with sentencing dates during FY2014-15 entered into the sentencing scoresheet database, as of September 1, 2015.*

FINDINGS:

- The number of Code scoresheets received by month of sentence fluctuated from a high of 9,719 to a low of 7,721 from July 1, 2014 to June 30, 2015 (Figure 1).
- For the time period July 2014 through June 2015, Code scoresheets represent ninety-nine point nine percent (99.9%) of the total scoresheet submissions. Throughout the fiscal year, more than ninety-nine percent of the scoresheets represented sentencing events under the Florida Criminal Punishment Code (Table 2).
- About a quarter (23.7%) of the offenders sentenced under the Code were considered “youthful offenders” at the time of sentencing (Table 3). Of the 1,762 true juveniles (under 18 at the time of their offense) transferred to adult court under the Code, 674 (38.3%) of the offenders were age sixteen or younger (Table 4).
- There were 739 juveniles sentenced under the Code for violent offenses, including, murder/manslaughter, sex offenses, robbery, and other violent personal offenses. These violent offenses represent 41.9% of all offenses of juveniles (Table 4). Of the 739 violent juvenile offenders, 473 (64.0%) received a state prison sanction (Table 5).
- The gender and race distributions of offenders sentenced under the Code are similar to previous years sentencing events. Almost eighty percent (77.6%) of all scoresheets were for male offenders (Table 6), and 62.1% were for white offenders (Table 7).

**Figure 1
Scoresheets Received by Month of Sentence
Criminal Punishment Code**



**Table 1
Scoresheets Received by Circuit
Fiscal Year 2014-2015
Criminal Punishment Code**

Circuit of Sentence	Total	
	Number	Percent
01 (Pensacola)	6,455	6.3%
02 (Tallahassee)	2,559	2.5%
03 (Lake City)	2,106	2.0%
04 (Jacksonville)	4,560	4.4%
05 (Tavares)	5,818	5.6%
06 (Clearwater)	10,506	10.2%
07 (Daytona Beach)	3,784	3.7%
08 (Gainesville)	3,049	3.0%
09 (Orlando)	9,090	8.8%
10 (Bartow)	5,030	4.9%
11 (Miami)	5,963	5.8%
12 (Sarasota)	4,426	4.3%
13 (Tampa)	6,932	6.7%
14 (Panama City)	3,453	3.3%
15 (West Palm Beach)	4,132	4.0%
16 (Key West)	750	0.7%
17 (Ft. Lauderdale)	7,662	7.4%
18 (Sanford)	6,359	6.2%
19 (Ft. Pierce)	4,279	4.1%
20 (Ft. Myers)	6,231	6.0%
Total	103,144	100.0%

Table 2
Sentencing Scoresheets Received by Month of Sentence*
Fiscal Year 2014-2015

Month of Sentence	1994 Sentencing Guidelines Scoresheet		1995 Sentencing Guidelines Scoresheet**		Criminal Punishment Code Scoresheet		Total	
July 2014	6	0.1%	8	0.1%	9,021	99.8%	9,035	8.8%
August 2014	4	0.0%	4	0.0%	8,881	99.9%	8,889	8.6%
September 2014	4	0.0%	6	0.1%	8,937	99.9%	8,947	8.7%
October 2014	1	0.0%	11	0.1%	9,719	99.9%	9,731	9.4%
November 2014	1	0.0%	4	0.1%	7,721	99.9%	7,726	7.5%
December 2014	2	0.0%	5	0.1%	7,748	99.9%	7,755	7.5%
January 2015	2	0.0%	8	0.1%	8,821	99.9%	8,831	8.6%
February 2015	4	0.0%	8	0.1%	8,237	99.9%	8,249	8.0%
March 2015	2	0.0%	5	0.1%	8,889	99.9%	8,896	8.6%
April 2015	5	0.1%	3	0.0%	8,835	99.9%	8,843	8.6%
May 2015		0.0%	4	0.0%	8,041	100.0%	8,045	7.8%
June 2015		0.0%	6	0.1%	8,294	99.9%	8,300	8.0%
Total	31	0.0%	72	0.1%	103,144	99.9%	103,247	100.0%

* Total number of scoresheets, including those with offense dates between October 1, 1995 and May 24, 1997.

** Offense dates between May 25, 1997 and September 30, 1998.

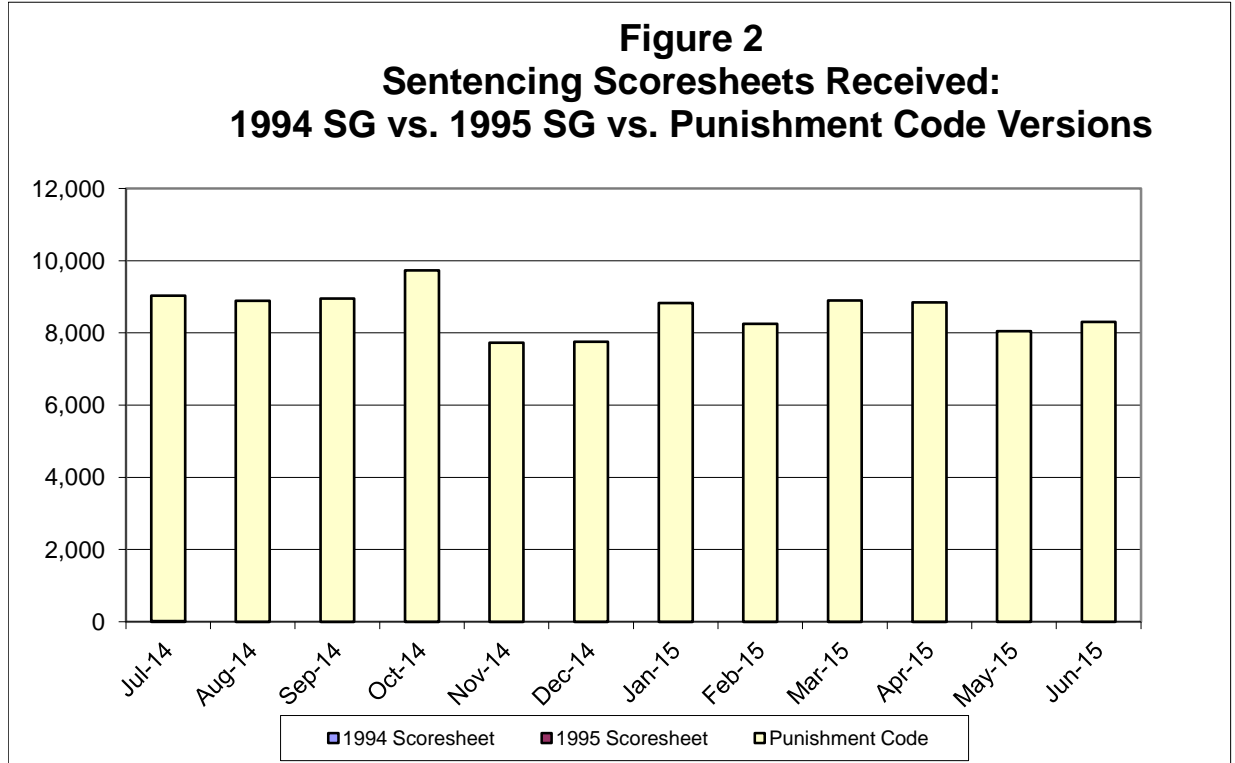


Table 3
Age at Sentencing
Criminal Punishment Code
Fiscal Year 2014-2015

Age	Number	Percent
17 and Below	420	0.4%
18 to 24	24,481	23.7%
25 to 29	20,539	19.9%
30 to 34	17,377	16.8%
35 to 39	12,110	11.7%
40 to 44	9,140	8.9%
45 to 49	7,352	7.1%
50 and Over	11,725	11.4%
Unknown	0	0.0%
Total	103,144	100.0%

Figure 3
Age at Sentencing Distribution
Criminal Punishment Code

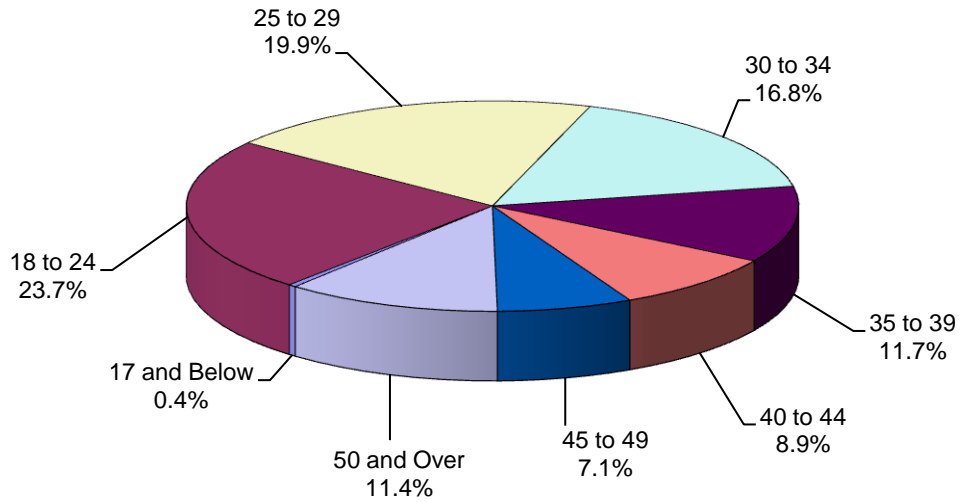


Table 4
Age at Offense for Offenders Under 18
Criminal Punishment Code
Fiscal Year 2014-2015

Primary Offense	15 & Under	16 Years Old	17 Years Old	Total
Murder/Manslaughter	11 5.1%	20 4.3%	35 3.2%	66 3.7%
Sexual Offenses	24 11.2%	16 3.5%	30 2.8%	70 4.0%
Robbery	52 24.3%	97 21.1%	175 16.1%	324 18.4%
Violent Personal Offenses	43 20.1%	86 18.7%	150 13.8%	279 15.8%
Burglary	49 22.9%	160 34.8%	392 36.0%	601 34.1%
Theft, Forgery, Fraud	14 6.5%	28 6.1%	117 10.8%	159 9.0%
Drugs	9 4.2%	8 1.7%	78 7.2%	95 5.4%
Weapons	3 1.4%	37 8.0%	82 7.5%	122 6.9%
Other Offenses	9 4.2%	8 1.7%	29 2.7%	46 2.6%
Total	214 100.0%	460 100.0%	1,088 100.0%	1,762 100.0%

Figure 4
Age at Offense Distribution
Offenders Under 18

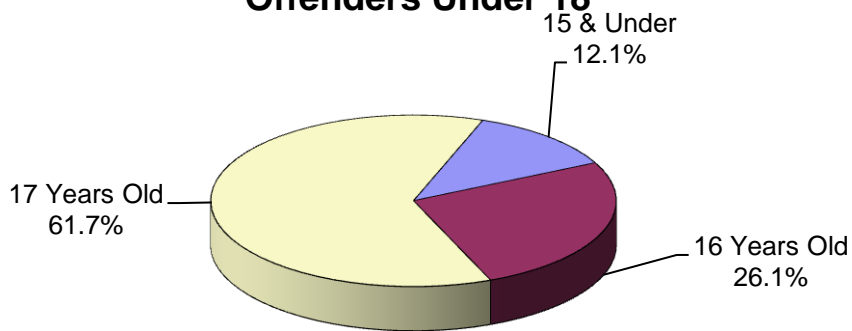


Table 5
Sanction Imposed by Primary Offense For All 11 - 17 Year Olds
Criminal Punishment Code
Fiscal Year 2014-2015

Primary Offense	State Prison	Comm. Control	Probation	County Jail	Other	Total
Murder/Manslaughter	58 6.2%	4 2.1%	2 0.5%	2 1.0%	0 0.0%	66 3.7%
Sexual Offenses	50 5.4%	3 1.6%	15 3.8%	0 0.0%	2 5.7%	70 4.0%
Robbery	220 23.6%	40 20.9%	37 9.4%	20 9.5%	7 20.0%	324 18.4%
Violent Personal Offenses	145 15.6%	36 18.8%	75 19.0%	21 10.0%	2 5.7%	279 15.8%
Burglary	317 34.0%	74 38.7%	131 33.2%	62 29.5%	17 48.6%	601 34.1%
Theft, Forgery, Fraud	45 4.8%	11 5.8%	52 13.2%	47 22.4%	4 11.4%	159 9.0%
Drugs	28 3.0%	6 3.1%	40 10.2%	20 9.5%	1 2.9%	95 5.4%
Weapons	47 5.0%	11 5.8%	33 8.4%	30 14.3%	1 2.9%	122 6.9%
Other Offenses	22 2.4%	6 3.1%	9 2.3%	8 3.8%	1 2.9%	46 2.6%
Total	932 100.0%	191 100.0%	394 100.0%	210 100.0%	35 100.0%	1,762 100.0%

Note: County Jail includes those sentenced to time served; prison includes those sentenced to life.

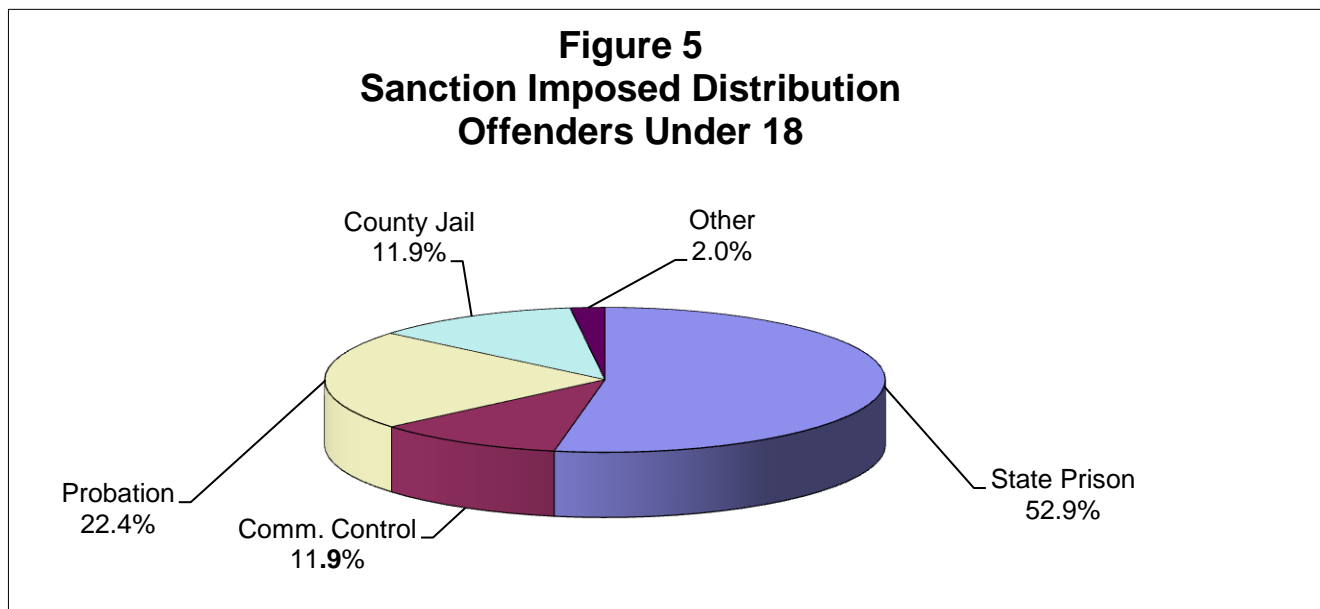


Table 6
Gender by Judicial Circuit
Criminal Punishment Code
Fiscal Year 2014-2015

Judicial Circuit	Gender				Total	
	Male		Female			
01 (Pensacola)	4,820	4.7%	1,635	1.6%	6,455	6.3%
02 (Tallahassee)	1,970	1.9%	589	0.6%	2,559	2.5%
03 (Lake City)	1,596	1.5%	510	0.5%	2,106	2.0%
04 (Jacksonville)	3,540	3.4%	1,020	1.0%	4,560	4.4%
05 (Tavares)	4,321	4.2%	1,497	1.5%	5,818	5.6%
06 (Clearwater)	7,760	7.5%	2,746	2.7%	10,506	10.2%
07 (Daytona Beach)	2,831	2.7%	953	0.9%	3,784	3.7%
08 (Gainesville)	2,331	2.3%	718	0.7%	3,049	3.0%
09 (Orlando)	7,363	7.1%	1,727	1.7%	9,090	8.8%
10 (Bartow)	3,849	3.7%	1,181	1.1%	5,030	4.9%
11 (Miami)	5,178	5.0%	785	0.8%	5,963	5.8%
12 (Sarasota)	3,366	3.3%	1,060	1.0%	4,426	4.3%
13 (Tampa)	5,638	5.5%	1,294	1.3%	6,932	6.7%
14 (Panama City)	2,606	2.5%	847	0.8%	3,453	3.3%
15 (West Palm Beach)	3,350	3.2%	782	0.8%	4,132	4.0%
16 (Key West)	622	0.6%	128	0.1%	750	0.7%
17 (Ft. Lauderdale)	6,173	6.0%	1,489	1.4%	7,662	7.4%
18 (Sanford)	4,795	4.6%	1,564	1.5%	6,359	6.2%
19 (Ft. Pierce)	3,190	3.1%	1,089	1.1%	4,279	4.1%
20 (Ft. Myers)	4,750	4.6%	1,481	1.4%	6,231	6.0%
Total	80,049	77.6%	23,095	22.4%	103,144	100.0%

Table 7
Race by Judicial Circuit
Criminal Punishment Code
Fiscal Year 2014-2015

Judicial Circuit	Race						Total	
	Black		White		Other*			
01 (Pensacola)	2,164	2.1%	4,225	4.1%	66	0.1%	6,455	6.3%
02 (Tallahassee)	1,586	1.5%	943	0.9%	30	0.0%	2,559	2.5%
03 (Lake City)	733	0.7%	1,357	1.3%	16	0.0%	2,106	2.0%
04 (Jacksonville)	2,319	2.2%	2,158	2.1%	83	0.1%	4,560	4.4%
05 (Tavares)	1,390	1.3%	4,283	4.2%	145	0.1%	5,818	5.6%
06 (Clearwater)	2,640	2.6%	7,559	7.3%	307	0.3%	10,506	10.2%
07 (Daytona Beach)	1,106	1.1%	2,628	2.5%	50	0.0%	3,784	3.7%
08 (Gainesville)	1,427	1.4%	1,601	1.6%	21	0.0%	3,049	3.0%
09 (Orlando)	3,639	3.5%	5,433	5.3%	18	0.0%	9,090	8.8%
10 (Bartow)	1,495	1.4%	3,474	3.4%	61	0.1%	5,030	4.9%
11 (Miami)	2,782	2.7%	3,159	3.1%	22	0.0%	5,963	5.8%
12 (Sarasota)	1,165	1.1%	3,154	3.1%	107	0.1%	4,426	4.3%
13 (Tampa)	3,039	2.9%	3,513	3.4%	380	0.4%	6,932	6.7%
14 (Panama City)	833	0.8%	2,594	2.5%	26	0.0%	3,453	3.3%
15 (W. Palm Beach)	1,812	1.8%	2,317	2.2%	3	0.0%	4,132	4.0%
16 (Key West)	168	0.2%	573	0.6%	9	0.0%	750	0.7%
17 (Ft. Lauderdale)	4,160	4.0%	3,357	3.3%	145	0.1%	7,662	7.4%
18 (Sanford)	1,952	1.9%	4,243	4.1%	164	0.2%	6,359	6.2%
19 (Ft. Pierce)	1,416	1.4%	2,652	2.6%	211	0.2%	4,279	4.1%
20 (Ft. Myers)	1,419	1.4%	4,782	4.6%	30	0.0%	6,231	6.0%
Total	37,245	36.1%	64,005	62.1%	1,894	1.8%	103,144	100.0%

*Other includes Asian, Native American, and other categories.

PART II

OFFENSE TO SENTENCE DATE LAG TIME COMPARISON

Offense to Sentence Date Lag Time Comparison

***FACT:** Scoresheets that have been received by the Department of Corrections for offenders sentenced under the Florida Criminal Punishment Code are not representative of the true impact of sentencing events under the Code.*

FINDINGS:

- There were 69,681 scoresheets submitted to the Department of Corrections with sentence dates in FY2014-2015 and offense dates on or after October 1, 2013. The number of scoresheets submitted to the Department of Corrections with sentence dates in FY2013-2014 and offense dates on or after October 1, 2012 was 67,669.
- **Lag Time** - The average length of time that passes from the date an offender commits a crime to the date the offender is sentenced for that crime is 6.3 months for sentencing events in FY2014-2015 (Table 1).
- More serious and violent crimes typically have much longer lag time than the less serious property or drug crimes. A data file that is constrained by the date of offense must allow for enough time for the serious and violent crimes to be processed and convicted in order to represent a true distribution of sentencing events. The Florida Criminal Punishment Code went into effect for offenses committed on or after October 1, 1998. As of September 1, 2015, the Department of Corrections had received almost 2.4 million Code scoresheets. However, because of the long lag time for serious offenses, the information to date is skewed more heavily by the less serious offenses.
- The average lag time for FY2013-2014 sentencing events is 6.2 months. When the lag times are examined by offense severity level and type of primary offense, the average lag time for level 10 offenses (most serious) was 10.6 months for sentencing events during FY2013-2014. In FY2014-2015, the average lag time for level 10 offenses was 10.0 months. Also, for murder/manslaughter, the average lag time from offense to sentence is 10.5 months for sentencing dates in FY2013-2014 and 10.6 months for FY2014-2015 (Table 2).

- The more violent, serious offenses represented 17.4% of the scoresheets in FY2014-2015 and 17.5% in FY2014-2015 (Figure 1).
- Property offenses comprised the largest group of scoresheets received in FY2013-2014 (36.8%) and FY2014-2015 (36.3%) (Table 3).

Table 1
Comparison of Average Time from Offense Date to Sentence Date
by Offense Severity Level of Primary Offense, in Months

Offense Severity Level	FY2013-2014 Sentence Dates¹	FY2014-2015 Sentence Dates²
1	5.3	5.4
2	6.1	6.2
3	5.6	5.8
4	6.1	6.2
5	6.7	6.8
6	6.9	6.8
7	7.6	7.8
8	8.5	8.8
9	9.0	9.5
10	10.6	10.0
Overall Average	6.2	6.3

Table 2
Comparison of Average "Lag" Time from Offense Date to
Sentence Date by Primary Offense, in Months

Primary Offense	FY2013-2014 Sentence Dates¹	FY2014-2015 Sentence Dates²
Murder/Manslaughter	10.5	10.6
Sexual/Lewd Behavior	9.4	9.6
Robbery	7.4	7.8
Violent, Other	6.5	6.5
Burglary	6.5	6.7
Property Theft/Fraud/Damage	6.2	6.3
Drugs	5.9	6.2
Weapons	6.5	6.5
Other	5.6	5.8
Overall Average	6.2	6.3

¹ Offense dates on or after October 1, 2012.

² Offense dates on or after October 1, 2013.

Figure 1
Distribution of Offense Group
Sentence Dates in FY2013-2014 vs. FY2014-2015

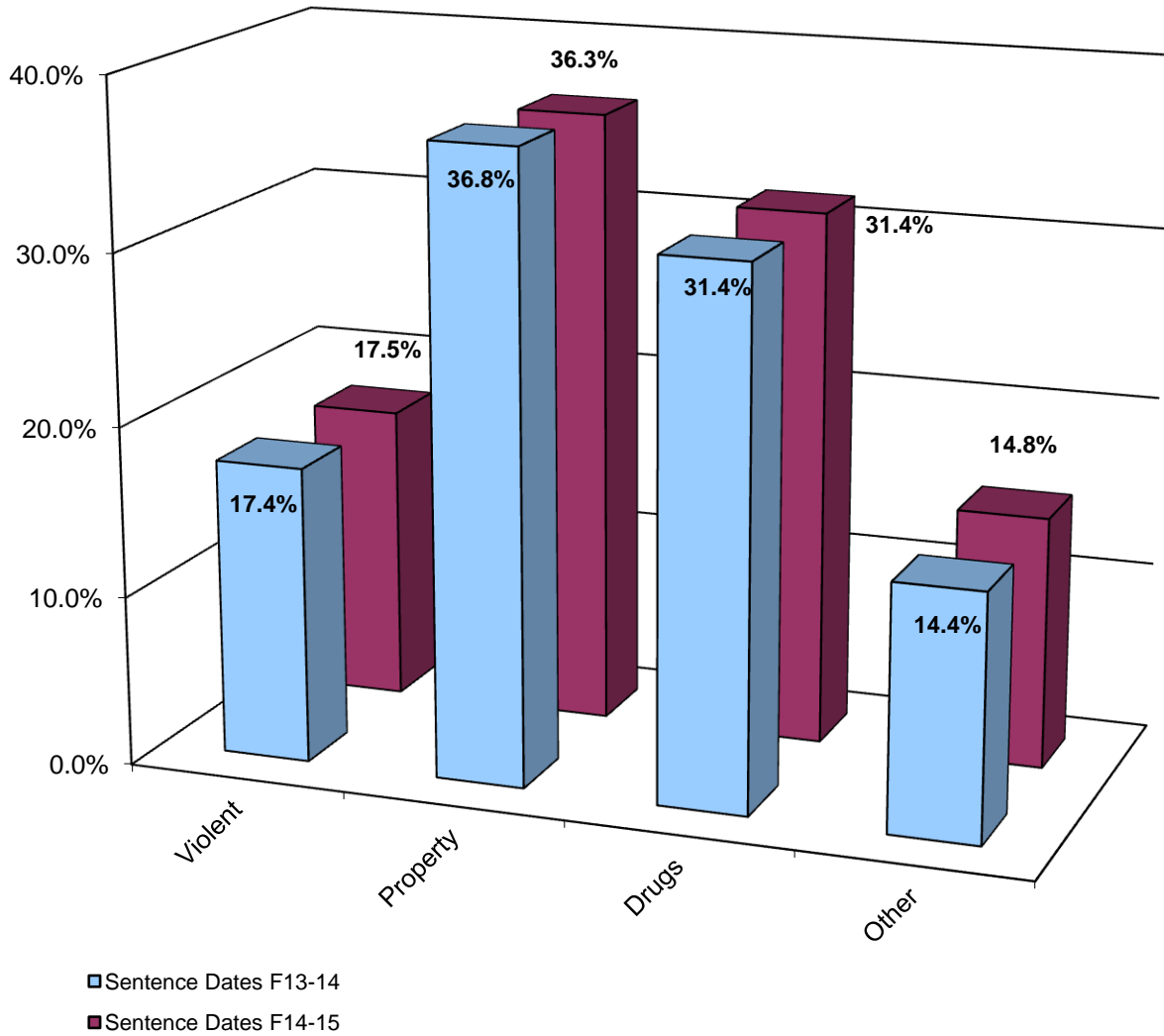


Table 3
Distribution of Offense
Sentence Dates in FY2013-2014 vs. FY2014-2015

Primary Offense	FY2013-2014 Sentence Dates ¹	FY2014-2015 Sentence Dates ²
Murder/Manslaughter	196 0.3%	182 0.3%
Sexual Offenses	736 1.1%	727 1.0%
Robbery	1,567 2.3%	1,486 2.1%
Violent Personal Offenses	9,080 13.4%	9,526 13.7%
Burglary	7,413 11.0%	7,093 10.2%
Theft/Forgery/Fraud	17,655 26.1%	18,369 26.4%
Drugs	21,234 31.4%	21,908 31.4%
Weapons	2,157 3.2%	2,533 3.6%
Other	7,631 11.3%	7,857 11.3%
Total	67,669 100.0%	69,681 100.0%

¹ Offense dates on or after October 1, 2012.

² Offense dates on or after October 1, 2013.

**Table 4
Distribution of Offense**

Primary Offense	FY2013-2014 Sentence Dates¹		FY2014-2015 Sentence Dates²	
Murder/Manslaughter	196	0.3%	182	0.3%
1st Degree Murder	61	0.1%	48	0.1%
2nd Degree Murder	70	0.1%	66	0.1%
3rd Degree Murder	3	0.0%	3	0.0%
Homicide, Other	2	0.0%	3	0.0%
Manslaughter	36	0.1%	39	0.1%
DUI Manslaughter	24	0.0%	23	0.0%
Sexual Offenses	736	1.1%	727	1.0%
Capital Sexual Battery	25	0.0%	32	0.0%
Life Sexual Battery	23	0.0%	24	0.0%
1st Degree Sexual Battery	37	0.1%	48	0.1%
2nd Degree Sexual Battery	73	0.1%	94	0.1%
Sexual Assault, Other	10	0.0%	5	0.0%
Lewd/Lascivious Behavior	568	0.8%	524	0.8%
Robbery	1,567	2.3%	1,486	2.1%
Robbery with Weapon	547	0.8%	558	0.8%
Robbery without Weapon	974	1.4%	879	1.3%
Home Invasion, Robbery	46	0.1%	49	0.1%
Violent Personal Offenses	9,058	13.4%	9,511	13.6%
Home Invasion, Other	1	0.0%	0	0.0%
Carjacking	62	0.1%	60	0.1%
Aggravated Assault	1,273	1.9%	1,236	1.8%
Aggravated Battery	873	1.3%	933	1.3%
Assault/Battery on L.E.O.	1,029	1.5%	1,150	1.7%
Assault/Battery, Other	989	1.5%	1,055	1.5%
Aggravated Stalking	157	0.2%	153	0.2%
Resisting Arrest with Violence	1,126	1.7%	1,168	1.7%
Kidnapping	259	0.4%	298	0.4%
Arson	118	0.2%	105	0.2%
Abuse of Children	962	1.4%	960	1.4%
Violent, Other	1,850	2.7%	2,028	2.9%
Leaving Accident, Injury/Death	308	0.5%	298	0.4%
DUI, Injury	51	0.1%	67	0.1%
Burglary	7,413	11.0%	7,093	10.2%
Burglary, Structure	3,817	5.6%	3,716	5.3%
Burglary, Dwelling	2,666	3.9%	2,423	3.5%
Burglary, Armed	256	0.4%	269	0.4%
Burglary with Assault	208	0.3%	195	0.3%
Burglary/Trespass, Other	466	0.7%	490	0.7%

Table 4
Distribution of Offense

Primary Offense	FY2013-2014		FY2014-2015	
	Sentence Dates ¹		Sentence Dates ²	
Theft/Forgery/Fraud	17,655	26.1%	18,375	26.4%
Grand Theft, Other	6,852	10.1%	7,318	10.5%
Grand Theft, Automobile	1,156	1.7%	1,318	1.9%
Stolen Property	3,196	4.7%	2,978	4.3%
Forgery/Counterfeiting	1,838	2.7%	1,901	2.7%
Worthless Checks	114	0.2%	92	0.1%
Fraudulent Practices	1,998	3.0%	1,962	2.8%
Theft/Property Damage, Other	2,501	3.7%	2,806	4.0%
Drugs	21,234	31.4%	21,908	31.4%
Drugs, Manufacture/Sale/Purchase	6,078	9.0%	6,012	8.6%
Drugs, Trafficking	839	1.2%	741	1.1%
Drugs, Possession/Other	14,317	21.2%	15,155	21.7%
Weapons	2,157	3.2%	2,533	3.6%
Weapons, Discharging	166	0.2%	174	0.2%
Weapons, Possession	1,983	2.9%	2,355	3.4%
Weapons, Other	8	0.0%	4	0.0%
Other	7,653	11.3%	7,866	11.3%
Escape	1,509	2.2%	1,539	2.2%
DUI, No Injury	469	0.7%	445	0.6%
Traffic, Other	3,151	4.7%	3,403	4.9%
Racketeering	14	0.0%	22	0.0%
Pollution/Hazardous Materials	14	0.0%	18	0.0%
Criminal Justice System	2,037	3.0%	1,993	2.9%
Other	459	0.7%	446	0.6%
Total	67,669	100.0%	69,681	100.0%

¹ Offense dates on or after October 1, 2012.

² Offense dates on or after October 1, 2013.

PART III

COMPARATIVE DESCRIPTION

Comparative Description

NOTES: This section examines the sentencing parameters point values, as follows:

- The Criminal Punishment Code allows for a non-state prison sanction for offenders scoring 44.0 or fewer total points.
- The Code mandates state prison as the sanction, unless the sentence is mitigated, for all those offenders whose total points exceed 44.0.

This means that only those offenders scoring 44 or fewer points may receive a non-state prison sanction under the Code. All others must receive a state prison sanction, absent downward departure from this structure.

Florida Statute 921.0026 allows for circumstances or factors that reasonably justify the downward departure of Guidelines/Code scoresheet.

In addition, on January 24, 2002 the Supreme Court of Florida ruled in *Jones v. State* that Section 948.01(3) F.S. (supp. 1998), which allows for the sanction of drug offender probation in the case of a chronic substance abuser, provides an alternative sentencing scheme for drug offenders that is outside the Code. It was ruled that the Trial Court had the discretion to sentence the defendant to drug offender probation even though the Code mandated prison time.

Actual sanctions imposed, including state prison, community control, probation, county jail/time served, and other sanctions are presented and compared to the categories listed above.

FINDINGS:

- Across the state, 20.5% of offenders were sentenced to state prison as the most severe sanction in FY2014-2015. An additional 25.2% were sentenced to incarceration in county jail, or to time already served in jail. Five percent (5.3%) were sentenced to community control, and almost half to probation (48.5%), including drug offender probation and regular probation. Less than one percent (0.6%) of offenders were sentenced to “other” sanctions. For sentencing dates in FY2013-2014, 20.8% of offenders were sentenced to state prison and 23.1% were sentenced to county jail or time served. Less than six percent (5.5%) were sentenced to community control, and 50.0% to probation. Less than one percent (0.5%) of the offenders were sentenced to “other” sanctions (Table 1).

- Almost three-quarters of the 69,681 Code scoresheets with sentence dates in FY2014-2015 examined (51,084 scoresheets or 73.3%) scored 44 points or fewer (Table 1). These scoresheets represent sentencing events where the judge has the discretion to sentence the offender to either a non-state prison sanction or a state prison sanction. If the judge chose to sentence the offender to state prison, the judge had the discretion to sentence the offender up to the statutory maximum of the law. For scoresheets with sentence dates in FY2013-2014, there were 49,225 (72.7%) offenders scoring 44 points or fewer (Table 1).
- For FY2014-2015, of the offenders scoring in the recommended state prison category, 58.0% were sentenced to state prison, with another 12.3% sentenced to county jail or time served. Of those scoring fewer than 44 points, 6.8% were sentenced to state prison, and 29.9% to county jail/time served. For FY2013-2014, 58.3% of the offenders scoring above 44 points were sentenced to state prison and another 10.5% of these offenders were sentenced to county jail or time served. Of those scoring fewer than 44 points, 6.8% were sentenced to state prison, and 27.9% to county jail/time served. (Table 1).
- Scoresheets with a state prison sanction decreased slightly from 20.8% in FY2013-2014 to 20.5% in FY2014-2015. County jail sanctions increased from 23.1% in FY2013-2014 to 25.2% in FY2014-2015. Community Control sanction rates decreased slightly from 5.5% in FY2013-2014 to 5.3% in FY2014-2015 (Table 1).
- Statewide, 76.3% of offenders (10,752 out of 14,086) receiving a prison sanction scored out to a prison sanction in FY 2014-2015. Table 2 presents the scoring distribution of offenders under the Code for FY2013-2014 and FY2014-2015 by circuit and sanction imposed. In FY2014-2015, Circuit 11 (Miami) had the highest percentage (95.2%) of prison sanctioned scoresheets with more than 44 points while Circuit 12 (Sarasota) had the lowest (58.0%).
- Incarceration rates vary greatly by county and circuit. Jail sanctions also vary greatly depending on the number of beds available and judicial inclination to use the jail sanction. Table 3 represents the distribution of sanction imposed by circuit and county. Although variance in sentencing does exist at the circuit and county level based on the judge involved, variability in the statistics presented in this table could also be as a result of differences in the type of offenders

being sentenced around the state. There are also very small numbers of scoresheets for some of the counties listed in this table. The incarceration rates for counties with fewer than 100 scoresheets could possibly be misleading (Table 3).

- In both FY2013-2014 and FY2014-2015 the majority of violent offenders received a state prison sanction (Table 4).
- As would be expected, scoresheets with the highest offense severity levels received a state prison sanction, and those with the lowest received probation (Table 5).
- Consistently in FY2013-2014 and FY2014-2015, for offenders sentenced to state prison, the majority with offense severity levels of 1 through 5 received less than two years and those with offense level 10 received more than ten years (Table 6).
- From FY2013-2014 to FY2014-2015 the percentage of scoresheets with no prior record or prior misdemeanors decreased slightly. Those with four to six or more felonies were the same or changed very slightly. (Table 7).
- From FY2013-2014 to FY2014-2015 the percentage of scoresheets with no additional offenses decreased slightly and those with misdemeanors increased by a percentage point. The percentage with four or more felonies remained relatively constant (Table 8).

Within the Criminal Punishment Code policy, a true mitigation occurs when an offender scores more than 44 total points and either receives a non-state prison sanction (except drug offender probation) or a state prison sentence length below the 25% permissible discretion. Sanction mitigation occurs when an offender scores more than 44 total points, but receives a non-state prison sanction (except drug offender probation).

- The true mitigation rate for offenders who scored more than 44 total points is 59.4% for FY2013-2014 and 58.360.4% for FY2014-2015. The sanction mitigation rate (cases that scored to state prison but received a non-state prison sanction) was 40.6% for FY2013-2014 and 41.0% for FY2014-2015 (Table 11).

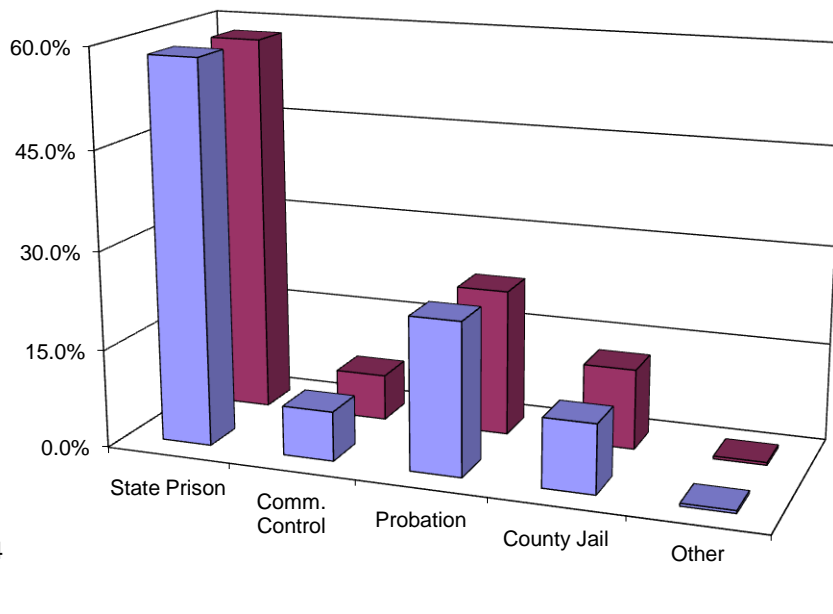
- For the offenders who received a mitigated prison sentence length, the average reduction in sentence was 26.6 months during FY2013-2014 and 24.5 months during FY2014-2015 (Table 11).

Departure, as defined here, is not a comment on the legality of the sentence. There are many reasons for departure, which are recognized as legitimate under F. S. 921.0026. In addition, other Statutes, such as F.S. 948.034, establish special conditions allowing for departures from recommended sentences. Database limitations do not allow us to isolate all these reasons for departure.

Table 1
Recommended Sanction Category by Sanction Imposed

Sanction Imposed	Recommended Sanction Category							
	FY 2013-2014 Sentence Dates ¹				FY 2014-2015 Sentence Dates ²			
	22.0 Points or Less	22.1 to 44.0 Points	More than 44.0 Points	Total	22.0 Points or Less	22.1 to 44.0 Points	More than 44.0 Points	Total
State Prison	402 1.8%	2,932 10.8%	10,752 58.3%	14,086 20.8%	398 1.7%	3,087 10.9%	10,785 58.0%	14,270 20.5%
Community Control	622 2.8%	1,731 6.4%	1,388 7.5%	3,741 5.5%	607 2.7%	1,793 6.3%	1,301 7.0%	3,701 5.3%
Probation	15,272 69.0%	14,296 52.8%	4,290 23.3%	33,858 50.0%	15,291 67.0%	14,338 50.7%	4,152 22.3%	33,781 48.5%
County Jail	5,751 26.0%	7,962 29.4%	1,939 10.5%	15,652 23.1%	6,386 28.0%	8,869 31.4%	2,283 12.3%	17,538 25.2%
Other	98 0.4%	159 0.6%	75 0.4%	332 0.5%	135 0.6%	180 0.6%	76 0.4%	391 0.6%
Total	22,145 100.0%	27,080 100.0%	18,444 100.0%	67,669 100.0%	22,817 100.0%	28,267 100.0%	18,597 100.0%	69,681 100.0%

Figure 1
Sanction Imposed for Offenders Scoring In the State Prison Sanction Category*



*Total points greater than 44.

¹ Offense dates on or after October 1, 2012.

² Offense dates on or after October 1, 2013.

Table 2
Recommended Sanction Category by Sanction Imposed

Judicial Circuit / Sanction Imposed	Recommended Sanction Category											
	FY 2013-2014 Sentence Dates1					FY 2014-2015 Sentence Dates2						
	22.0 Points or Less		22.1 to 44.0 Points		More than 44.0 Points		22.0 Points or Less		22.1 to 44.0 Points		More than 44.0 Points	
01 (Pensacola)	1,430	33.2%	1,840	42.8%	1,031	24.0%	1,453	33.6%	1,880	43.5%	990	22.9%
Prison	16	1.9%	161	18.7%	686	79.5%	31	3.6%	182	21.1%	650	75.3%
Community Control	87	28.0%	156	50.2%	68	21.9%	74	20.4%	208	57.3%	81	22.3%
Probation	1,080	47.3%	994	43.5%	211	9.2%	1,030	47.1%	980	44.8%	178	8.1%
County Jail	239	29.6%	510	63.1%	59	7.3%	304	35.1%	488	56.3%	75	8.7%
Other	8	23.5%	19	55.9%	7	20.6%	14	33.3%	22	52.4%	6	14.3%
02 (Tallahassee)	549	30.5%	651	36.2%	599	33.3%	430	27.4%	609	38.7%	533	33.9%
Prison	5	1.2%	55	13.4%	351	85.4%	5	1.4%	53	14.9%	297	83.7%
Community Control	14	17.7%	29	36.7%	36	45.6%	14	17.3%	39	48.1%	28	34.6%
Probation	424	42.7%	402	40.5%	166	16.7%	340	38.6%	368	41.8%	172	19.5%
County Jail	106	33.7%	163	51.7%	46	14.6%	67	27.3%	143	58.4%	35	14.3%
Other	0	0.0%	2	100.0%	0	0.0%	4	36.4%	6	54.5%	1	9.1%
03 (Lake City)	259	25.2%	451	43.9%	317	30.9%	282	24.1%	502	42.9%	385	32.9%
Prison	5	2.2%	57	25.0%	166	72.8%	12	4.3%	68	24.6%	196	71.0%
Community Control	22	16.7%	77	58.3%	33	25.0%	23	14.6%	85	54.1%	49	31.2%
Probation	220	38.2%	261	45.3%	95	16.5%	228	36.5%	289	46.3%	107	17.1%
County Jail	6	17.6%	17	50.0%	11	32.4%	10	16.7%	33	55.0%	17	28.3%
Other	6	10.5%	39	68.4%	12	21.1%	9	17.3%	27	51.9%	16	30.8%
04 (Jacksonville)	880	28.8%	1,156	37.8%	1,023	33.4%	957	27.5%	1,440	41.4%	1,084	31.1%
Prison	35	2.9%	348	29.0%	817	68.1%	43	3.3%	430	32.8%	838	63.9%
Community Control	14	21.5%	27	41.5%	24	36.9%	13	23.2%	24	42.9%	19	33.9%
Probation	337	44.2%	323	42.4%	102	13.4%	322	41.4%	356	45.8%	100	12.9%
County Jail	494	47.9%	458	44.4%	80	7.8%	579	43.3%	630	47.2%	127	9.5%
Other	0	0.0%	0	0.0%	0	0.0%	0	0.0%	0	0.0%	0	0.0%
05 (Tavares)	1,478	33.4%	1,778	40.2%	1,168	26.4%	1,445	33.6%	1,872	43.5%	990	23.0%
Prison	17	1.5%	256	22.2%	880	76.3%	12	1.3%	176	19.5%	713	79.1%
Community Control	33	21.4%	85	55.2%	36	23.4%	34	18.0%	100	52.9%	55	29.1%
Probation	982	47.7%	887	43.1%	189	9.2%	983	45.7%	996	46.3%	170	7.9%
County Jail	421	41.2%	540	52.8%	61	6.0%	381	37.8%	579	57.4%	49	4.9%
Other	25	67.6%	10	27.0%	2	5.4%	35	59.3%	21	35.6%	3	5.1%
06 (Clearwater)	2,354	31.4%	3,306	44.2%	1,827	24.4%	2,335	33.8%	2,990	43.3%	1,586	22.9%
Prison	31	2.0%	293	18.7%	1,245	79.3%	23	1.7%	228	16.8%	1,103	81.5%
Community Control	58	15.7%	188	50.9%	123	33.3%	59	23.0%	126	49.0%	72	28.0%
Probation	1,403	44.3%	1,439	45.4%	325	10.3%	1,271	46.6%	1,201	44.0%	258	9.5%
County Jail	854	36.4%	1,370	58.4%	123	5.2%	976	38.3%	1,425	55.9%	146	5.7%
Other	8	22.9%	16	45.7%	11	31.4%	6	26.1%	10	43.5%	7	30.4%
07 (Daytona)	1,226	34.2%	1,534	42.8%	826	23.0%	960	36.9%	1,102	42.4%	538	20.7%
Prison	30	3.7%	259	31.7%	527	64.6%	38	6.5%	189	32.1%	361	61.4%
Community Control	25	15.6%	87	54.4%	48	30.0%	31	27.7%	55	49.1%	26	23.2%
Probation	935	48.4%	827	42.8%	170	8.8%	709	49.4%	617	43.0%	110	7.7%
County Jail	228	34.5%	355	53.7%	78	11.8%	181	40.3%	230	51.2%	38	8.5%

Table 2
Recommended Sanction Category by Sanction Imposed

Judicial Circuit / Sanction Imposed	Recommended Sanction Category					
	FY 2013-2014 Sentence Dates1			FY 2014-2015 Sentence Dates2		
	22.0 Points or Less	22.1 to 44.0 Points	More than 44.0 Points	22.0 Points or Less	22.1 to 44.0 Points	More than 44.0 Points
Other	8 47.1%	6 35.3%	3 17.6%	1 6.7%	11 73.3%	3 20.0%
08 (Gainesville)	542 27.2%	818 41.1%	631 31.7%	596 28.4%	891 42.4%	614 29.2%
Prison	23 3.9%	136 23.3%	425 72.8%	14 2.3%	191 30.9%	413 66.8%
Community Control	11 11.3%	54 55.7%	32 33.0%	7 9.9%	46 64.8%	18 25.4%
Probation	393 42.5%	425 45.9%	107 11.6%	412 46.0%	381 42.5%	103 11.5%
County Jail	107 30.5%	184 52.4%	60 17.1%	152 31.9%	253 53.2%	71 14.9%
Other	8 23.5%	19 55.9%	7 20.6%	11 27.5%	20 50.0%	9 22.5%
09 (Orlando)	2,293 39.7%	2,180 37.8%	1,301 22.5%	2,635 41.5%	2,379 37.5%	1,328 20.9%
Prison	17 2.0%	114 13.4%	720 84.6%	10 1.2%	141 16.6%	698 82.2%
Community Control	45 21.3%	79 37.4%	87 41.2%	59 26.2%	91 40.4%	75 33.3%
Probation	1,494 52.2%	1,063 37.2%	303 10.6%	1,655 54.9%	1,047 34.7%	314 10.4%
County Jail	731 40.1%	913 50.1%	178 9.8%	898 40.6%	1,082 48.9%	234 10.6%
Other	6 20.0%	11 36.7%	13 43.3%	13 34.2%	18 47.4%	7 18.4%
10 (Bartow)	954 31.5%	1,357 44.8%	717 23.7%	934 29.3%	1,489 46.8%	760 23.9%
Prison	5 0.7%	184 26.2%	512 73.0%	15 1.8%	234 28.3%	577 69.9%
Community Control	50 20.7%	150 62.2%	41 17.0%	38 15.1%	162 64.3%	52 20.6%
Probation	758 45.8%	770 46.5%	127 7.7%	720 44.8%	784 48.8%	102 6.4%
County Jail	136 32.2%	251 59.3%	36 8.5%	156 32.0%	307 62.9%	25 5.1%
Other	5 62.5%	2 25.0%	1 12.5%	5 45.5%	2 18.2%	4 36.4%
11 (Miami)	1,363 30.8%	1,223 27.6%	1,845 41.6%	1,287 28.6%	1,285 28.5%	1,934 42.9%
Prison	7 1.2%	32 5.4%	552 93.4%	7 1.1%	23 3.7%	590 95.2%
Community Control	9 3.3%	49 17.9%	216 78.8%	13 5.8%	39 17.3%	174 77.0%
Probation	1,041 44.7%	726 31.1%	564 24.2%	943 42.5%	696 31.4%	578 26.1%
County Jail	306 24.8%	416 33.7%	513 41.5%	324 22.5%	527 36.5%	592 41.0%
Other	0 0.0%	0 0.0%	0 0.0%	0 0.0%	0 0.0%	0 0.0%
12 (Sarasota)	1,393 47.2%	1,078 36.5%	479 16.2%	1,285 41.7%	1,277 41.4%	520 16.9%
Prison	87 15.9%	137 25.1%	322 59.0%	67 11.4%	179 30.5%	340 58.0%
Community Control	53 29.4%	104 57.8%	23 12.8%	58 25.2%	136 59.1%	36 15.7%
Probation	719 55.4%	479 36.9%	101 7.8%	726 53.0%	553 40.3%	92 6.7%
County Jail	530 57.9%	355 38.8%	31 3.4%	431 49.1%	400 45.6%	46 5.2%
Other	4 44.4%	3 33.3%	2 22.2%	3 16.7%	9 50.0%	6 33.3%
13 (Tampa)	1,020 27.2%	1,379 36.8%	1,348 36.0%	1,369 26.6%	1,822 35.4%	1,955 38.0%
Prison	14 3.1%	40 8.8%	401 88.1%	10 1.0%	116 11.6%	870 87.3%
Community Control	13 4.9%	42 15.8%	211 79.3%	10 4.0%	61 24.6%	177 71.4%
Probation	877 33.7%	1,138 43.7%	587 22.6%	941 35.3%	1,137 42.6%	588 22.1%
County Jail	108 26.3%	154 37.6%	148 36.1%	402 32.9%	503 41.2%	317 25.9%
Other	8 57.1%	5 35.7%	1 7.1%	6 42.9%	5 35.7%	3 21.4%
14 (Panama City)	555 25.7%	1,007 46.7%	594 27.6%	539 23.5%	1,084 47.4%	666 29.1%
Prison	22 3.5%	204 32.4%	403 64.1%	31 4.7%	216 32.7%	413 62.6%
Community Control	35 16.2%	138 63.9%	43 19.9%	28 10.9%	142 55.3%	87 33.9%
Probation	486 38.9%	635 50.8%	129 10.3%	470 35.6%	699 53.0%	150 11.4%

Table 2
Recommended Sanction Category by Sanction Imposed

Judicial Circuit / Sanction Imposed	Recommended Sanction Category					
	FY 2013-2014 Sentence Dates1			FY 2014-2015 Sentence Dates2		
	22.0 Points or Less	22.1 to 44.0 Points	More than 44.0 Points	22.0 Points or Less	22.1 to 44.0 Points	More than 44.0 Points
County Jail	11 20.8%	26 49.1%	16 30.2%	8 17.4%	23 50.0%	15 32.6%
Other	1 12.5%	4 50.0%	3 37.5%	2 28.6%	4 57.1%	1 14.3%
15 (West Palm Beach)	846 27.4%	1,310 42.5%	928 30.1%	761 26.1%	1,251 42.9%	903 31.0%
Prison	1 0.2%	88 14.5%	517 85.3%	5 0.9%	85 15.8%	448 83.3%
Community Control	4 8.9%	14 31.1%	27 60.0%	3 6.7%	25 55.6%	17 37.8%
Probation	410 41.3%	433 43.6%	150 15.1%	370 40.3%	391 42.5%	158 17.2%
County Jail	431 30.1%	772 53.8%	231 16.1%	381 27.1%	746 53.1%	278 19.8%
Other	0 0.0%	3 50.0%	3 50.0%	2 25.0%	4 50.0%	2 25.0%
16 (Key West)	149 29.2%	242 47.5%	119 23.3%	122 27.0%	209 46.2%	121 26.8%
Prison	1 1.1%	15 17.0%	72 81.8%	0 0.0%	10 13.9%	62 86.1%
Community Control	9 19.1%	27 57.4%	11 23.4%	6 15.0%	21 52.5%	13 32.5%
Probation	123 39.5%	163 52.4%	25 8.0%	96 33.8%	146 51.4%	42 14.8%
County Jail	16 25.8%	37 59.7%	9 14.5%	20 35.7%	32 57.1%	4 7.1%
Other	0 0.0%	0 0.0%	2 100.0%	0 0.0%	0 0.0%	0 0.0%
17 (Ft. Lauderdale)	1,190 33.3%	1,275 35.6%	1,112 31.1%	1,378 34.9%	1,394 35.3%	1,176 29.8%
Prison	9 1.7%	58 11.0%	460 87.3%	14 2.1%	90 13.6%	560 84.3%
Community Control	10 6.1%	52 31.9%	101 62.0%	17 8.0%	78 36.6%	118 55.4%
Probation	1,074 43.4%	947 38.2%	455 18.4%	1,274 45.7%	1,061 38.1%	451 16.2%
County Jail	91 22.9%	211 53.1%	95 23.9%	63 23.9%	156 59.1%	45 17.0%
Other	6 42.9%	7 50.0%	1 7.1%	10 47.6%	9 42.9%	2 9.5%
18 (Sanford)	1,272 32.4%	1,652 42.1%	1,000 25.5%	1,457 34.7%	1,893 45.0%	854 20.3%
Prison	14 2.0%	109 15.8%	568 82.2%	12 2.1%	99 17.1%	468 80.8%
Community Control	34 9.0%	178 47.0%	167 44.1%	33 9.9%	171 51.0%	131 39.1%
Probation	989 46.6%	933 43.9%	201 9.5%	1,129 47.0%	1,081 45.0%	194 8.1%
County Jail	231 32.4%	422 59.3%	59 8.3%	270 31.4%	535 62.1%	56 6.5%
Other	4 21.1%	10 52.6%	5 26.3%	13 52.0%	7 28.0%	5 20.0%
19 (Ft. Pierce)	1,004 39.0%	1,005 39.0%	568 22.0%	1,107 39.4%	1,078 38.4%	623 22.2%
Prison	42 6.1%	219 31.6%	432 62.3%	33 4.6%	217 30.0%	473 65.4%
Community Control	47 43.9%	43 40.2%	17 15.9%	40 40.4%	42 42.4%	17 17.2%
Probation	612 55.4%	420 38.0%	73 6.6%	646 53.7%	481 40.0%	77 6.4%
County Jail	303 45.3%	322 48.1%	44 6.6%	387 49.9%	334 43.0%	55 7.1%
Other	0 0.0%	1 33.3%	2 66.7%	1 16.7%	4 66.7%	1 16.7%
20 (Ft. Myers)	1,388 32.8%	1,836 43.4%	1,011 23.9%	1,485 34.2%	1,820 41.9%	1,036 23.9%
Prison	21 2.4%	167 18.9%	696 78.7%	16 1.8%	160 18.0%	714 80.2%
Community Control	49 20.0%	152 62.0%	44 18.0%	47 19.2%	142 58.0%	56 22.9%
Probation	915 42.4%	1,031 47.8%	210 9.7%	1,026 44.5%	1,074 46.5%	208 9.0%
County Jail	402 42.4%	484 51.1%	61 6.4%	396 44.1%	443 49.4%	58 6.5%
Other	1 33.3%	2 66.7%	0 0.0%	0 0.0%	1 100.0%	0 0.0%
Statewide	22,145 100.0%	27,078 100.0%	18,444 100.0%	22,817 100.0%	28,267 100.0%	18,596 100.0%

Missing: FY1314=2, FY1415=1

Note: County jail includes those sentenced to time served; prison includes those sentenced to life.

**Table 3
Sanction Imposed By Judicial Circuit and County**

Circuit/County	FY 2013-2014 Sentence Dates1						FY2014-2015 Sentence Dates2					
	State Prison	Comm. Control	Probation	County Jail	Other Sentence	Total	State Prison	Comm. Control	Probation	County Jail	Other Sentence	Total
01 (Pensacola)	863 20.1%	311 7.2%	2,285 53.1%	808 18.8%	34 0.8%	4,301 100.0%	863 20.0%	363 8.4%	2,188 50.6%	867 20.1%	42 1.0%	4,323 100.0%
Escambia	586 22.8%	177 6.9%	1,201 46.7%	583 22.6%	27 1.0%	2,574 100.0%	520 22.6%	204 8.9%	1,012 43.9%	537 23.3%	31 1.3%	2,304 100.0%
Okaloosa	134 14.8%	87 9.6%	608 67.3%	70 7.7%	5 0.6%	904 100.0%	116 12.0%	110 11.4%	647 67.0%	87 9.0%	5 0.5%	965 100.0%
Santa Rosa	114 18.3%	28 4.5%	345 55.5%	133 21.4%	2 0.3%	622 100.0%	162 20.5%	33 4.2%	392 49.7%	196 24.8%	6 0.8%	789 100.0%
Walton	29 14.4%	19 9.5%	131 65.2%	22 10.9%	0 0.0%	201 100.0%	65 24.5%	16 6.0%	137 51.7%	47 17.7%	0 0.0%	265 100.0%
02 (Tallahassee)	411 22.8%	79 4.4%	992 55.1%	315 17.5%	2 0.1%	1,799 100.0%	355 22.6%	81 5.2%	880 56.0%	245 15.6%	11 0.7%	1,572 100.0%
Franklin	17 15.5%	7 6.4%	73 66.4%	13 11.8%	0 0.0%	110 100.0%	11 13.8%	9 11.3%	57 71.3%	3 3.8%	0 0.0%	80 100.0%
Gadsden	28 35.4%	4 5.1%	45 57.0%	2 2.5%	0 0.0%	79 100.0%	22 32.4%	4 5.9%	38 55.9%	4 5.9%	0 0.0%	68 100.0%
Jefferson	6 35.3%	2 11.8%	9 52.9%	0 0.0%	0 0.0%	17 100.0%	3 6.7%	1 2.2%	38 84.4%	3 6.7%	0 0.0%	45 100.0%
Leon	338 23.3%	58 4.0%	761 52.5%	291 20.1%	2 0.1%	1,450 100.0%	302 23.6%	58 4.5%	679 53.1%	228 17.8%	11 0.9%	1,278 100.0%
Liberty	15 26.3%	2 3.5%	36 63.2%	4 7.0%	0 0.0%	57 100.0%	15 33.3%	4 8.9%	21 46.7%	5 11.1%	0 0.0%	45 100.0%
Wakulla	7 8.1%	6 7.0%	68 79.1%	5 5.8%	0 0.0%	86 100.0%	2 3.6%	5 8.9%	47 83.9%	2 3.6%	0 0.0%	56 100.0%
03 (Lake City)	228 22.2%	132 12.9%	576 56.1%	34 3.3%	57 5.6%	1,027 100.0%	276 23.6%	157 13.4%	624 53.4%	60 5.1%	52 4.4%	1,169 100.0%
Columbia	104 28.0%	26 7.0%	206 55.4%	10 2.7%	26 7.0%	372 100.0%	151 32.4%	55 11.8%	222 47.6%	24 5.2%	14 3.0%	466 100.0%
Dixie	17 19.3%	10 11.4%	55 62.5%	4 4.5%	2 2.3%	88 100.0%	14 16.7%	12 14.3%	44 52.4%	8 9.5%	6 7.1%	84 100.0%

**Table 3
Sanction Imposed By Judicial Circuit and County**

Circuit/County	FY 2013-2014 Sentence Dates1						FY2014-2015 Sentence Dates2					
	State Prison	Comm. Control	Probation	County Jail	Other Sentence	Total	State Prison	Comm. Control	Probation	County Jail	Other Sentence	Total
Hamilton	2 3.2%	6 9.7%	44 71.0%	6 9.7%	4 6.5%	62 100.0%	3 6.0%	3 6.0%	28 56.0%	7 14.0%	9 18.0%	50 100.0%
Lafayette	4 22.2%	0 0.0%	11 61.1%	2 11.1%	1 5.6%	18 100.0%	3 23.1%	0 0.0%	10 76.9%	0 0.0%	0 0.0%	13 100.0%
Madison	8 6.6%	32 26.4%	64 52.9%	4 3.3%	13 10.7%	121 100.0%	15 12.2%	15 12.2%	76 61.8%	8 6.5%	9 7.3%	123 100.0%
Suwannee	46 27.5%	22 13.2%	95 56.9%	3 1.8%	1 0.6%	167 100.0%	56 24.3%	31 13.5%	132 57.4%	8 3.5%	3 1.3%	230 100.0%
Taylor	47 23.6%	36 18.1%	101 50.8%	5 2.5%	10 5.0%	199 100.0%	34 16.7%	41 20.2%	112 55.2%	5 2.5%	11 5.4%	203 100.0%
04 (Jacksonville)	1,200 39.2%	65 2.1%	762 24.9%	1,032 33.7%	0 0.0%	3,059 100.0%	1,311 37.7%	56 1.6%	778 22.3%	1,336 38.4%	0 0.0%	3,481 100.0%
Clay	125 22.9%	24 4.4%	219 40.2%	177 32.5%	0 0.0%	545 100.0%	137 28.2%	14 2.9%	195 40.1%	140 28.8%	0 0.0%	486 100.0%
Duval	979 40.6%	40 1.7%	541 22.4%	854 35.4%	0 0.0%	2,414 100.0%	1,107 37.8%	41 1.4%	583 19.9%	1,194 40.8%	0 0.0%	2,925 100.0%
Nassau	96 96.0%	1 1.0%	2 2.0%	1 1.0%	0 0.0%	100 100.0%	67 95.7%	1 1.4%	0 0.0%	2 2.9%	0 0.0%	70 100.0%
05 (Tavares)	1,153 26.1%	154 3.5%	2,058 46.5%	1,022 23.1%	37 0.8%	4,424 100.0%	901 20.9%	189 4.4%	2,149 49.9%	1,009 23.4%	59 1.4%	4,307 100.0%
Citrus	111 32.5%	18 5.3%	178 52.0%	35 10.2%	0 0.0%	342 100.0%	140 25.0%	34 6.1%	259 46.3%	126 22.5%	0 0.0%	559 100.0%
Hernando	221 26.2%	27 3.2%	348 41.3%	238 28.2%	9 1.1%	843 100.0%	150 21.6%	42 6.1%	319 46.0%	174 25.1%	9 1.3%	694 100.0%
Lake	241 18.7%	54 4.2%	714 55.3%	267 20.7%	16 1.2%	1,292 100.0%	218 17.9%	58 4.8%	684 56.2%	224 18.4%	34 2.8%	1,218 100.0%
Marion	520 30.5%	51 3.0%	703 41.2%	422 24.7%	11 0.6%	1,707 100.0%	333 22.7%	47 3.2%	688 46.8%	386 26.3%	16 1.1%	1,470 100.0%
Sumter	60 25.0%	4 1.7%	115 47.9%	60 25.0%	1 0.4%	240 100.0%	60 16.4%	8 2.2%	199 54.4%	99 27.0%	0 0.0%	366 100.0%

**Table 3
Sanction Imposed By Judicial Circuit and County**

Circuit/County	FY 2013-2014 Sentence Dates1						FY2014-2015 Sentence Dates2					
	State Prison	Comm. Control	Probation	County Jail	Other Sentence	Total	State Prison	Comm. Control	Probation	County Jail	Other Sentence	Total
06 (Clearwater)	1,569	369	3,167	2,347	35	7,487	1,354	257	2,730	2,547	23	6,911
	21.0%	4.9%	42.3%	31.3%	0.5%	100.0%	19.6%	3.7%	39.5%	36.9%	0.3%	100.0%
Pasco	456	138	966	374	9	1,943	408	81	906	515	8	1,918
	23.5%	7.1%	49.7%	19.2%	0.5%	100.0%	21.3%	4.2%	47.2%	26.9%	0.4%	100.0%
Pinellas	1,113	231	2,201	1,973	26	5,544	946	176	1,824	2,032	15	4,993
	20.1%	4.2%	39.7%	35.6%	0.5%	100.0%	18.9%	3.5%	36.5%	40.7%	0.3%	100.0%
07 (Daytona)	816	160	1,932	661	17	3,586	588	112	1,436	449	15	2,600
	22.8%	4.5%	53.9%	18.4%	0.5%	100.0%	22.6%	4.3%	55.2%	17.3%	0.6%	100.0%
Flagler	58	21	109	29	6	223	62	11	115	49	3	240
	26.0%	9.4%	48.9%	13.0%	2.7%	100.0%	25.8%	4.6%	47.9%	20.4%	1.3%	100.0%
Putnam	174	4	221	92	4	495	139	8	210	68	6	431
	35.2%	0.8%	44.6%	18.6%	0.8%	100.0%	32.3%	1.9%	48.7%	15.8%	1.4%	100.0%
St. Johns	124	16	319	41	0	500	94	22	335	47	0	498
	24.8%	3.2%	63.8%	8.2%	0.0%	100.0%	18.9%	4.4%	67.3%	9.4%	0.0%	100.0%
Volusia	460	119	1,283	499	7	2,368	293	71	776	285	6	1,431
	19.4%	5.0%	54.2%	21.1%	0.3%	100.0%	20.5%	5.0%	54.2%	19.9%	0.4%	100.0%
08 (Gainesville)	584	97	925	351	34	1,991	618	71	896	476	40	2,101
	29.3%	4.9%	46.5%	17.6%	1.7%	100.0%	29.4%	3.4%	42.6%	22.7%	1.9%	100.0%
Alachua	381	75	597	235	26	1,314	377	39	508	303	18	1,245
	29.0%	5.7%	45.4%	17.9%	2.0%	100.0%	30.3%	3.1%	40.8%	24.3%	1.4%	100.0%
Baker	26	9	58	22	0	115	32	11	89	37	7	176
	22.6%	7.8%	50.4%	19.1%	0.0%	100.0%	18.2%	6.3%	50.6%	21.0%	4.0%	100.0%
Bradford	74	2	149	46	5	276	118	1	93	81	1	294
	26.8%	0.7%	54.0%	16.7%	1.8%	100.0%	40.1%	0.3%	31.6%	27.6%	0.3%	100.0%
Gilchrist	23	2	24	13	0	62	21	7	47	8	10	93
	37.1%	3.2%	38.7%	21.0%	0.0%	100.0%	22.6%	7.5%	50.5%	8.6%	10.8%	100.0%
Levy	57	4	69	26	2	158	44	9	124	43	4	224
	36.1%	2.5%	43.7%	16.5%	1.3%	100.0%	19.6%	4.0%	55.4%	19.2%	1.8%	100.0%
Union	23	5	28	9	1	66	26	4	35	4	0	69
	34.8%	7.6%	42.4%	13.6%	1.5%	100.0%	37.7%	5.8%	50.7%	5.8%	0.0%	100.0%

**Table 3
Sanction Imposed By Judicial Circuit and County**

Circuit/County	FY 2013-2014 Sentence Dates1						FY2014-2015 Sentence Dates2					
	State Prison	Comm. Control	Probation	County Jail	Other Sentence	Total	State Prison	Comm. Control	Probation	County Jail	Other Sentence	Total
09 (Orlando)	851	211	2,860	1,822	30	5,774	849	225	3,016	2,214	38	6,342
	14.7%	3.7%	49.5%	31.6%	0.5%	100.0%	13.4%	3.5%	47.6%	34.9%	0.6%	100.0%
Orange	639	145	2,186	1,441	30	4,441	674	143	2,196	1,838	38	4,889
	14.4%	3.3%	49.2%	32.4%	0.7%	100.0%	13.8%	2.9%	44.9%	37.6%	0.8%	100.0%
Osceola	212	66	674	381	0	1,333	175	82	820	376	0	1,453
	15.9%	5.0%	50.6%	28.6%	0.0%	100.0%	12.0%	5.6%	56.4%	25.9%	0.0%	100.0%
10 (Bartow)	701	241	1,655	423	8	3,028	826	252	1,606	488	11	3,183
	23.2%	8.0%	54.7%	14.0%	0.3%	100.0%	26.0%	7.9%	50.5%	15.3%	0.3%	100.0%
Hardee	16	7	73	13	0	109	42	12	125	14	1	194
	14.7%	6.4%	67.0%	11.9%	0.0%	100.0%	21.6%	6.2%	64.4%	7.2%	0.5%	100.0%
Highlands	46	16	139	42	2	245	61	21	120	28	3	233
	18.8%	6.5%	56.7%	17.1%	0.8%	100.0%	26.2%	9.0%	51.5%	12.0%	1.3%	100.0%
Polk	639	218	1,443	368	6	2,674	723	219	1,361	446	7	2,756
	23.9%	8.2%	54.0%	13.8%	0.2%	100.0%	26.2%	7.9%	49.4%	16.2%	0.3%	100.0%
11 (Miami)	591	274	2,331	1,235	0	4,431	620	226	2,217	1,443	0	4,506
	13.3%	6.2%	52.6%	27.9%	0.0%	100.0%	13.8%	5.0%	49.2%	32.0%	0.0%	100.0%
Miami-Dade	591	274	2,331	1,235	0	4,431	620	226	2,217	1,443	0	4,506
	13.3%	6.2%	52.6%	27.9%	0.0%	100.0%	13.8%	5.0%	49.2%	32.0%	0.0%	100.0%
12 (Sarasota)	546	180	1,299	916	9	2,950	586	230	1,371	877	18	3,082
	18.5%	6.1%	44.0%	31.1%	0.3%	100.0%	19.0%	7.5%	44.5%	28.5%	0.6%	100.0%
Desoto	54	32	77	38	0	201	51	49	98	31	0	229
	26.9%	15.9%	38.3%	18.9%	0.0%	100.0%	22.3%	21.4%	42.8%	13.5%	0.0%	100.0%
Manatee	258	73	679	466	5	1,481	274	78	657	385	5	1,399
	17.4%	4.9%	45.8%	31.5%	0.3%	100.0%	19.6%	5.6%	47.0%	27.5%	0.4%	100.0%
Sarasota	234	75	543	412	4	1,268	261	103	616	461	13	1,454
	18.5%	5.9%	42.8%	32.5%	0.3%	100.0%	18.0%	7.1%	42.4%	31.7%	0.9%	100.0%
13 (Tampa)	455	266	2,602	410	14	3,747	996	248	2,666	1,222	14	5,146
	12.1%	7.1%	69.4%	10.9%	0.4%	100.0%	19.4%	4.8%	51.8%	23.7%	0.3%	100.0%
Hillsborough	455	266	2,602	410	14	3,747	996	248	2,666	1,222	14	5,146
	12.1%	7.1%	69.4%	10.9%	0.4%	100.0%	19.4%	4.8%	51.8%	23.7%	0.3%	100.0%

**Table 3
Sanction Imposed By Judicial Circuit and County**

Circuit/County	FY 2013-2014 Sentence Dates1						FY2014-2015 Sentence Dates2					
	State Prison	Comm. Control	Probation	County Jail	Other Sentence	Total	State Prison	Comm. Control	Probation	County Jail	Other Sentence	Total
14 (Panama City)	629	216	1,250	53	8	2,156	660	257	1,319	46	7	2,289
	29.2%	10.0%	58.0%	2.5%	0.4%	100.0%	28.8%	11.2%	57.6%	2.0%	0.3%	100.0%
Bay	414	97	806	28	8	1,353	416	152	877	18	7	1,470
	30.6%	7.2%	59.6%	2.1%	0.6%	100.0%	28.3%	10.3%	59.7%	1.2%	0.5%	100.0%
Calhoun	29	5	40	0	0	74	39	14	47	4	0	104
	39.2%	6.8%	54.1%	0.0%	0.0%	100.0%	37.5%	13.5%	45.2%	3.8%	0.0%	100.0%
Gulf	25	7	53	2	0	87	34	11	58	3	0	106
	28.7%	8.0%	60.9%	2.3%	0.0%	100.0%	32.1%	10.4%	54.7%	2.8%	0.0%	100.0%
Holmes	37	56	118	3	0	214	58	44	104	1	0	207
	17.3%	26.2%	55.1%	1.4%	0.0%	100.0%	28.0%	21.3%	50.2%	0.5%	0.0%	100.0%
Jackson	97	8	134	13	0	252	81	23	134	18	0	256
	38.5%	3.2%	53.2%	5.2%	0.0%	100.0%	31.6%	9.0%	52.3%	7.0%	0.0%	100.0%
Washington	27	43	99	7	0	176	32	13	99	2	0	146
	15.3%	24.4%	56.3%	4.0%	0.0%	100.0%	21.9%	8.9%	67.8%	1.4%	0.0%	100.0%
15 (West Palm Beach)	606	45	993	1,434	6	3,084	538	45	919	1,405	8	2,915
	19.6%	1.5%	32.2%	46.5%	0.2%	100.0%	18.5%	1.5%	31.5%	48.2%	0.3%	100.0%
Palm Beach	606	45	993	1,434	6	3,084	538	45	919	1,405	8	2,915
	19.6%	1.5%	32.2%	46.5%	0.2%	100.0%	18.5%	1.5%	31.5%	48.2%	0.3%	100.0%
16 (Key West)	88	47	311	62	2	510	72	40	284	56	0	452
	17.3%	9.2%	61.0%	12.2%	0.4%	100.0%	15.9%	8.8%	62.8%	12.4%	0.0%	100.0%
Monroe	88	47	311	62	2	510	72	40	284	56	0	452
	17.3%	9.2%	61.0%	12.2%	0.4%	100.0%	15.9%	8.8%	62.8%	12.4%	0.0%	100.0%
17 (Ft. Lauderdale)	527	163	2,476	397	14	3,577	664	213	2,786	264	21	3,948
	14.7%	4.6%	69.2%	11.1%	0.4%	100.0%	16.8%	5.4%	70.6%	6.7%	0.5%	100.0%
Broward	527	163	2,476	397	14	3,577	664	213	2,786	264	21	3,948
	14.7%	4.6%	69.2%	11.1%	0.4%	100.0%	16.8%	5.4%	70.6%	6.7%	0.5%	100.0%
18 (Sanford)	691	379	2,123	712	19	3,924	579	335	2,404	861	25	4,204
	17.6%	9.7%	54.1%	18.1%	0.5%	100.0%	13.8%	8.0%	57.2%	20.5%	0.6%	100.0%
Brevard	390	270	1,123	403	6	2,192	291	229	1,342	497	6	2,365
	17.8%	12.3%	51.2%	18.4%	0.3%	100.0%	12.3%	9.7%	56.7%	21.0%	0.3%	100.0%

**Table 3
Sanction Imposed By Judicial Circuit and County**

Circuit/County	FY 2013-2014 Sentence Dates ¹						FY2014-2015 Sentence Dates ²					
	State Prison	Comm. Control	Probation	County Jail	Other Sentence	Total	State Prison	Comm. Control	Probation	County Jail	Other Sentence	Total
Seminole	301 17.4%	109 6.3%	1,000 57.7%	309 17.8%	13 0.8%	1,732 100.0%	288 15.7%	106 5.8%	1,062 57.7%	364 19.8%	19 1.0%	1,839 100.0%
19 (Ft. Pierce)	693 26.9%	107 4.2%	1,105 42.9%	669 26.0%	3 0.1%	2,577 100.0%	723 25.7%	99 3.5%	1,204 42.9%	776 27.6%	6 0.2%	2,808 100.0%
Indian River	111 19.0%	14 2.4%	262 44.9%	195 33.4%	2 0.3%	584 100.0%	91 15.6%	31 5.3%	252 43.1%	207 35.4%	4 0.7%	585 100.0%
Martin	265 37.3%	30 4.2%	288 40.6%	127 17.9%	0 0.0%	710 100.0%	169 28.0%	27 4.5%	275 45.6%	131 21.7%	1 0.2%	603 100.0%
Okeechobee	105 32.0%	22 6.7%	142 43.3%	58 17.7%	1 0.3%	328 100.0%	118 36.3%	15 4.6%	141 43.4%	50 15.4%	1 0.3%	325 100.0%
St. Lucie	212 22.2%	41 4.3%	413 43.2%	289 30.3%	0 0.0%	955 100.0%	345 26.6%	26 2.0%	536 41.4%	388 30.0%	0 0.0%	1,295 100.0%
20 (Ft. Myers)	884 20.9%	245 5.8%	2,156 50.9%	947 22.4%	3 0.1%	4,235 100.0%	890 20.5%	245 5.6%	2,308 53.2%	897 20.7%	1 0.0%	4,341 100.0%
Charlotte	187 22.1%	45 5.3%	422 49.8%	193 22.8%	0 0.0%	847 100.0%	163 20.8%	49 6.2%	374 47.6%	199 25.4%	0 0.0%	785 100.0%
Collier	159 19.6%	55 6.8%	400 49.4%	195 24.1%	1 0.1%	810 100.0%	166 17.3%	62 6.5%	504 52.6%	227 23.7%	0 0.0%	959 100.0%
Glades	8 25.8%	6 19.4%	17 54.8%	0 0.0%	0 0.0%	31 100.0%	0 0.0%	0 0.0%	0 0.0%	0 0.0%	0 0.0%	0 0.0%
Hendry	40 19.5%	5 2.4%	120 58.5%	39 19.0%	1 0.5%	205 100.0%	23 16.0%	4 2.8%	75 52.1%	42 29.2%	0 0.0%	144 100.0%
Lee	490 20.9%	134 5.7%	1,197 51.1%	520 22.2%	1 0.0%	2,342 100.0%	538 21.9%	130 5.3%	1,355 55.2%	429 17.5%	1 0.0%	2,453 100.0%
Statewide	14,086 20.8%	3,741 5.5%	33,858 50.0%	15,650 23.1%	332 0.5%	67,667 100.0%	14,269 20.5%	3,701 5.3%	33,781 48.5%	17,538 25.2%	391 0.6%	69,680 100.0%

Missing: FY1314=2, FY1415=1

Note: County jail includes those sentenced to time served; prison includes those sentenced to life.

¹ Offense dates on or after October 1, 2012.

² Offense dates on or after October 1, 2013.

**Table 3
Sanction Imposed By Judicial Circuit and County**

Circuit/County	FY 2013-2014 Sentence Dates1						FY2014-2015 Sentence Dates2					
	State Prison	Comm. Control	Probation	County Jail	Other Sentence	Total	State Prison	Comm. Control	Probation	County Jail	Other Sentence	Total
01 (Pensacola)	863	311	2,285	808	34	4,301	863	363	2,188	867	42	4,323
	0	0	1	0	0	100.0%	0	0	1	0	0	100.0%
02 (Tallahassee)	411	79	992	315	2	1,799	355	81	880	245	11	1,572
	0	0	1	0	0	100.0%	0	0	1	0	0	100.0%
03 (Lake City)	228	132	576	34	57	1,027	276	157	624	60	52	1,169
	0	0	1	0	0	100.0%	0	0	1	0	0	100.0%
04 (Jacksonville)	1,200	65	762	1,032	0	3,059	1,311	56	778	1,336	0	3,481
	0	0	0	0	0	100.0%	0	0	0	0	0	100.0%
05 (Tavares)	1,153	154	2,058	1,022	37	4,424	901	189	2,149	1,009	59	4,307
	0	0	0	0	0	100.0%	0	0	0	0	0	100.0%
06 (Clearwater)	1,569	369	3,167	2,347	35	7,487	1,354	257	2,730	2,547	23	6,911
	0	0	0	0	0	100.0%	0	0	0	0	0	100.0%
07 (Daytona)	816	160	1,932	661	17	3,586	588	112	1,436	449	15	2,600
	0	0	1	0	0	100.0%	0	0	1	0	0	100.0%
08 (Gainesville)	584	97	925	351	34	1,991	618	71	896	476	40	2,101
	0	0	0	0	0	100.0%	0	0	0	0	0	100.0%
09 (Orlando)	851	211	2,860	1,822	30	5,774	849	225	3,016	2,214	38	6,342
	0	0	0	0	0	100.0%	0	0	0	0	0	100.0%
10 (Bartow)	701	241	1,655	423	8	3,028	826	252	1,606	488	11	3,183
	0	0	1	0	0	100.0%	0	0	1	0	0	100.0%

**Table 3
Sanction Imposed By Judicial Circuit and County**

Circuit/County	FY 2013-2014 Sentence Dates ¹						FY2014-2015 Sentence Dates ²					
	State Prison	Comm. Control	Probation	County Jail	Other Sentence	Total	State Prison	Comm. Control	Probation	County Jail	Other Sentence	Total
11 (Miami)	591	274	2,331	1,235	0	4,431	620	226	2,217	1,443	0	4,506
	0	0	1	0	0	100.0%	0	0	0	0	0	100.0%
12 (Sarasota)	546	180	1,299	916	9	2,950	586	230	1,371	877	18	3,082
	0	0	0	0	0	100.0%	0	0	0	0	0	100.0%
13 (Tampa)	455	266	2,602	410	14	3,747	996	248	2,666	1,222	14	5,146
	0	0	1	0	0	100.0%	0	0	1	0	0	100.0%
14 (Panama City)	629	216	1,250	53	8	2,156	660	257	1,319	46	7	2,289
	0	0	1	0	0	100.0%	0	0	1	0	0	100.0%
15 (West Palm Beach)	606	45	993	1,434	6	3,084	538	45	919	1,405	8	2,915
	0	0	0	0	0	100.0%	0	0	0	0	0	100.0%
16 (Key West)	88	47	311	62	2	510	72	40	284	56	0	452
	0	0	1	0	0	100.0%	0	0	1	0	0	100.0%
17 (Ft. Lauderdale)	527	163	2,476	397	14	3,577	664	213	2,786	264	21	3,948
	0	0	1	0	0	100.0%	0	0	1	0	0	100.0%
18 (Sanford)	691	379	2,123	712	19	3,924	579	335	2,404	861	25	4,204
	0	0	1	0	0	100.0%	0	0	1	0	0	100.0%
19 (Ft. Pierce)	693	107	1,105	669	3	2,577	723	99	1,204	776	6	2,808
	0	0	0	0	0	100.0%	0	0	0	0	0	100.0%
20 (Ft. Myers)	884	245	2,156	947	3	4,235	890	245	2,308	897	1	4,341
	0	0	1	0	0	100.0%	0	0	1	0	0	100.0%
Statewide	14,086	3,741	33,858	15,650	332	67,667	14,269	3,701	33,781	17,538	391	69,680
	20.8%	5.5%	50.0%	23.1%	0.5%	100.0%	20.5%	5.3%	48.5%	25.2%	0.6%	100.0%

Missing: FY1314=2, FY1415=1

Note: County jail includes those sentenced to time served; prison includes those sentenced to life.

¹ Offense dates on or after October 1, 2012.

² Offense dates on or after October 1, 2013.

**Table 4
Offense Types by Sanction Imposed**

Offense Type		FY2013-2014 Sentence Dates ¹						FY2014-2015 Sentence Dates ²					
		State Prison	Comm. Control	Probation	County Jail	Other	Total	State Prison	Comm. Control	Probation	County Jail	Other	Total
Murder/Manslaughter	Attempt	76	3	3	0	0	82	77	2	5	1	1	86
	Complete	106	3	5	0	0	114	88	3	5	0	0	96
Sexual/Lewd Behavior	Attempt	48	0	4	0	0	52	54	3	10	0	0	67
	Complete	447	39	184	10	4	684	444	33	166	13	4	660
Robbery	Attempt	74	28	64	21	0	187	93	16	41	11	0	161
	Complete	788	125	350	110	7	1,380	776	102	328	117	2	1,325
Violent,Other	Attempt	34	6	56	4	0	100	37	10	35	6	0	88
	Complete	2,116	570	4,805	1,446	43	8,980	2,158	606	4,965	1,655	54	9,438
Burglary	Attempt	130	25	165	40	2	362	116	32	150	50	1	349
	Complete	2,469	614	2,969	956	43	7,051	2,374	496	2,766	1,077	31	6,744
Property Theft/Fraud/Damage	Attempt	2	2	18	5	0	27	3	0	10	5	0	18
	Complete	2,311	847	9,760	4,636	74	17,628	2,375	840	9,882	5,152	102	18,351
Drugs	Attempt	53	5	118	59	0	235	39	17	145	62	3	266
	Complete	3,378	1,004	10,886	5,632	99	20,999	3,422	972	10,757	6,379	112	21,642
Weapons	Attempt	3	2	16	2	0	23	8	1	10	0	0	19
	Complete	742	124	939	323	6	2,134	859	159	1,052	431	13	2,514
Other	Attempt	15	2	42	15	0	74	13	2	18	7	0	40
	Complete	1,294	342	3,474	2,393	54	7,557	1,334	407	3,435	2,572	68	7,816
Total		14,086	3,741	33,858	15,652	332	67,669	14,270	3,701	33,780	17,538	391	69,680

Missing: FY1415=1

Note: County jail includes those sentenced to time served; prison includes those sentenced to life.

¹ Offense dates on or after October 1, 2012.

² Offense dates on or after October 1, 2013.

**Table 5
Sanction Imposed by Offense Severity Level**

Offense Severity Level	FY2013-2014 Sentence Dates ¹						FY2014-2015 Sentence Dates ²					
	State Prison	Comm. Control	Probation	County Jail	Other Sentence	Total	State Prison	Comm. Control	Probation	County Jail	Other Sentence	Total
1	790 8.3%	362 3.8%	4,596 48.2%	3,734 39.1%	61 0.6%	9,543 100.0%	851 8.4%	380 3.8%	4,683 46.3%	4,096 40.5%	96 0.9%	10,106 100.0%
2	723 8.7%	326 3.9%	5,106 61.3%	2,143 25.7%	37 0.4%	8,335 100.0%	716 8.2%	352 4.0%	5,254 59.8%	2,405 27.4%	57 0.6%	8,784 100.0%
3	1,455 8.6%	704 4.1%	9,664 56.9%	5,081 29.9%	87 0.5%	16,991 100.0%	1,545 8.7%	747 4.2%	9,634 54.2%	5,762 32.4%	86 0.5%	17,774 100.0%
4	1,774 20.5%	476 5.5%	4,402 51.0%	1,926 22.3%	55 0.6%	8,633 100.0%	1,781 19.8%	489 5.4%	4,502 50.0%	2,189 24.3%	49 0.5%	9,010 100.0%
5	3,192 29.3%	762 7.0%	5,035 46.2%	1,860 17.1%	41 0.4%	10,890 100.0%	3,193 29.3%	683 6.3%	4,891 44.9%	2,080 19.1%	50 0.5%	10,897 100.0%
6	1,733 29.7%	391 6.7%	3,123 53.5%	559 9.6%	28 0.5%	5,834 100.0%	1,750 29.8%	431 7.3%	3,043 51.8%	619 10.5%	33 0.6%	5,876 100.0%
7	3,011 54.3%	538 9.7%	1,664 30.0%	317 5.7%	16 0.3%	5,546 100.0%	2,940 55.4%	474 8.9%	1,525 28.7%	352 6.6%	15 0.3%	5,306 100.0%
8	699 66.6%	108 10.3%	209 19.9%	29 2.8%	4 0.4%	1,049 100.0%	770 73.7%	80 7.7%	172 16.5%	19 1.8%	4 0.4%	1,045 100.0%
9	561 80.7%	71 10.2%	57 8.2%	3 0.4%	3 0.4%	695 100.0%	591 80.6%	62 8.5%	64 8.7%	15 2.0%	1 0.1%	733 100.0%
10	148 96.7%	3 2.0%	2 1.3%	0 0.0%	0 0.0%	153 100.0%	133 88.7%	3 2.0%	13 8.7%	1 0.7%	0 0.0%	150 100.0%
Total	14,086 20.8%	3,741 5.5%	33,858 50.0%	15,652 23.1%	332 0.5%	67,669 100.0%	14,270 20.5%	3,701 5.3%	33,781 48.5%	17,538 25.2%	391 0.6%	69,681 100.0%

Note: County jail includes those sentenced to time served; prison includes those sentenced to life.

¹ Offense dates on or after October 1, 2012.

² Offense dates on or after October 1, 2013.

Table 6
State Prison Sentence Length by Offense Severity Level

Offense Severity Level	FY2013-2014 Sentence Dates ¹					FY2014-2015 Sentence Dates ²				
	LE 2*	GT 2-LE 4*	GT 4-LE 10*	GT 10*	Total	LE 2*	GT 2-LE 4*	GT 4-LE 10*	GT 10*	Total
1	610 77.2%	127 16.1%	50 6.3%	3 0.4%	790 100.0%	651 76.5%	151 17.7%	47 5.5%	2 0.2%	851 100.0%
2	547 75.7%	123 17.0%	48 6.6%	5 0.7%	723 100.0%	558 77.9%	127 17.7%	29 4.1%	2 0.3%	716 100.0%
3	1,113 76.5%	265 18.2%	69 4.7%	8 0.5%	1,455 100.0%	1,200 77.7%	279 18.1%	64 4.1%	2 0.1%	1,545 100.0%
4	1,138 64.1%	454 25.6%	172 9.7%	10 0.6%	1,774 100.0%	1,171 65.7%	420 23.6%	174 9.8%	16 0.9%	1,781 100.0%
5	1,781 55.8%	986 30.9%	377 11.8%	48 1.5%	3,192 100.0%	1,813 56.8%	1,001 31.3%	338 10.6%	41 1.3%	3,193 100.0%
6	809 46.7%	521 30.1%	332 19.2%	71 4.1%	1,733 100.0%	864 49.4%	521 29.8%	309 17.7%	56 3.2%	1,750 100.0%
7	755 25.1%	1,195 39.7%	876 29.1%	185 6.1%	3,011 100.0%	766 26.1%	1,188 40.4%	811 27.6%	175 6.0%	2,940 100.0%
8	125 17.9%	158 22.6%	304 43.5%	112 16.0%	699 100.0%	114 14.8%	166 21.6%	340 44.2%	150 19.5%	770 100.0%
9	67 11.9%	92 16.4%	213 38.0%	189 33.7%	561 100.0%	58 9.8%	82 13.9%	242 40.9%	209 35.4%	591 100.0%
10	28 18.9%	7 4.7%	28 18.9%	85 57.4%	148 100.0%	12 9.0%	12 9.0%	28 21.1%	81 60.9%	133 100.0%
Total	6,973 49.5%	3,928 27.9%	2,469 17.5%	716 5.1%	14,086 100.0%	7,207 50.5%	3,947 27.7%	2,382 16.7%	734 5.1%	14,270 100.0%

* LE = Less than or equal to; GT = Greater than

¹ Offense dates on or after October 1, 2012.

² Offense dates on or after October 1, 2013.

**Table 7
Number of Prior Offenses***

Prior Offenses	FY2013-2014 Sentence Dates ¹		FY2014-2015 Sentence Dates ²	
	Number	Percent	Number	Percent
None	14,951	22.1%	14,917	21.4%
Misdemeanor Only	17,591	26.0%	18,191	26.1%
One Felony	13,065	19.3%	13,409	19.2%
Two Felonies	9,224	13.6%	9,465	13.6%
Three Felonies	5,743	8.5%	6,116	8.8%
Four Felonies	3,529	5.2%	3,549	5.1%
Five Felonies	1,891	2.8%	2,028	2.9%
Six Felonies	918	1.4%	1,087	1.6%
Seven or More Felonies	757	1.1%	919	1.3%
Total	67,669	100.0%	69,681	100.0%

* As indicated on the scoresheet.

**Table 8
Number of Additional Offenses***

Additional Offenses	FY2013-2014 Sentence Dates ²		FY2014-2015 Sentence Dates ²	
	Number	Percent	Number	Percent
None	33,816	50.0%	34,346	49.3%
Misdemeanor Only	16,641	24.6%	17,892	25.7%
One Felony	11,543	17.1%	11,622	16.7%
Two Felonies	3,495	5.2%	3,533	5.1%
Three Felonies	1,269	1.9%	1,341	1.9%
Four Felonies	449	0.7%	491	0.7%
Five Felonies	253	0.4%	217	0.3%
Six Felonies	104	0.2%	116	0.2%
Seven or More Felonies	99	0.1%	123	0.2%
Total	67,669	100.0%	69,681	100.0%

* As indicated on the scoresheet.

¹ Offense dates on or after October 1, 2012.

² Offense dates on or after October 1, 2013.

**Table 9
Prior Felony Record* and Sanction Imposed**

Number of Prior Felonies	FY2013-2014 Sentence Dates ¹						FY2014-2015 Sentence Dates ²					
	State Prison	Comm. Control	Probation	County Jail	Other Sentence	Total	State Prison	Comm. Control	Probation	County Jail	Other Sentence	Total
None	3,406 10.5%	2,015 6.2%	21,586 66.3%	5,338 16.4%	197 0.6%	32,542 100.0%	3,478 10.5%	1,925 5.8%	21,384 64.6%	6,065 18.3%	256 0.8%	33,108 100.0%
One	2,631 20.1%	738 5.6%	5,901 45.2%	3,733 28.6%	62 0.5%	13,065 100.0%	2,542 19.0%	728 5.4%	5,907 44.1%	4,164 31.1%	68 0.5%	13,409 100.0%
Two	2,611 28.3%	484 5.2%	3,207 34.8%	2,885 31.3%	37 0.4%	9,224 100.0%	2,642 27.9%	513 5.4%	3,202 33.8%	3,085 32.6%	23 0.2%	9,465 100.0%
Three	2,099 36.5%	247 4.3%	1,649 28.7%	1,735 30.2%	13 0.2%	5,743 100.0%	2,114 34.6%	296 4.8%	1,702 27.8%	1,976 32.3%	28 0.5%	6,116 100.0%
Four	1,492 42.3%	137 3.9%	838 23.7%	1,050 29.8%	12 0.3%	3,529 100.0%	1,475 41.6%	127 3.6%	824 23.2%	1,112 31.3%	11 0.3%	3,549 100.0%
Five	939 49.7%	53 2.8%	389 20.6%	502 26.5%	8 0.4%	1,891 100.0%	979 48.3%	65 3.2%	419 20.7%	564 27.8%	1 0.0%	2,028 100.0%
Six	485 52.8%	34 3.7%	184 20.0%	213 23.2%	2 0.2%	918 100.0%	552 50.8%	31 2.9%	215 19.8%	286 26.3%	3 0.3%	1,087 100.0%
Seven or More	423 55.9%	33 4.4%	104 13.7%	196 25.9%	1 0.1%	757 100.0%	488 53.1%	16 1.7%	128 13.9%	286 31.1%	1 0.1%	919 100.0%
Total	14,086 20.8%	3,741 5.5%	33,858 50.0%	15,652 23.1%	332 0.5%	67,669 100.0%	14,270 20.5%	3,701 5.3%	33,781 48.5%	17,538 25.2%	391 0.6%	69,681 100.0%

* As indicated on the scoresheet

Note: County jail includes those sentenced to time served; prison includes those sentenced to life.

¹ Offense dates on or after October 1, 2012.

² Offense dates on or after October 1, 2013.

Table 10
Additional Offenses* and Sanction Imposed

Number of Additional Felonies	FY2013-2014 Sentence Dates ¹						FY2014-2015 Sentence Dates ²					
	State Prison	Comm. Control	Probation	County Jail	Other Sentence	Total	State Prison	Comm. Control	Probation	County Jail	Other Sentence	Total
None	7,292 14.5%	2,462 4.9%	27,203 53.9%	13,235 26.2%	265 0.5%	50,457 100.0%	7,410 14.2%	2,449 4.7%	27,261 52.2%	14,792 28.3%	326 0.6%	52,238 100.0%
One	3,708 32.1%	823 7.1%	5,062 43.9%	1,896 16.4%	54 0.5%	11,543 100.0%	3,729 32.1%	829 7.1%	4,880 42.0%	2,137 18.4%	47 0.4%	11,622 100.0%
Two	1,684 48.2%	304 8.7%	1,109 31.7%	389 11.1%	9 0.3%	3,495 100.0%	1,686 47.7%	254 7.2%	1,115 31.6%	468 13.2%	10 0.3%	3,533 100.0%
Three	770 60.7%	87 6.9%	319 25.1%	90 7.1%	3 0.2%	1,269 100.0%	783 58.4%	102 7.6%	340 25.4%	110 8.2%	6 0.4%	1,341 100.0%
Four	293 65.3%	30 6.7%	99 22.0%	26 5.8%	1 0.2%	449 100.0%	327 66.6%	35 7.1%	106 21.6%	21 4.3%	2 0.4%	491 100.0%
Five	185 73.1%	18 7.1%	38 15.0%	12 4.7%	0 0.0%	253 100.0%	159 73.3%	14 6.5%	37 17.1%	7 3.2%	0 0.0%	217 100.0%
Six	80 76.9%	6 5.8%	15 14.4%	3 2.9%	0 0.0%	104 100.0%	87 75.0%	8 6.9%	20 17.2%	1 0.9%	0 0.0%	116 100.0%
Seven or More	74 74.7%	11 11.1%	13 13.1%	1 1.0%	0 0.0%	99 100.0%	89 72.4%	10 8.1%	22 17.9%	2 1.6%	0 0.0%	123 100.0%
Total	14,086 20.8%	3,741 5.5%	33,858 50.0%	15,652 23.1%	332 0.5%	67,669 100.0%	14,270 20.5%	3,701 5.3%	33,781 48.5%	17,538 25.2%	391 0.6%	69,681 100.0%

* As indicated on the scoresheet.

Note: County jail includes those sentenced to time served; prison includes those sentenced to life.

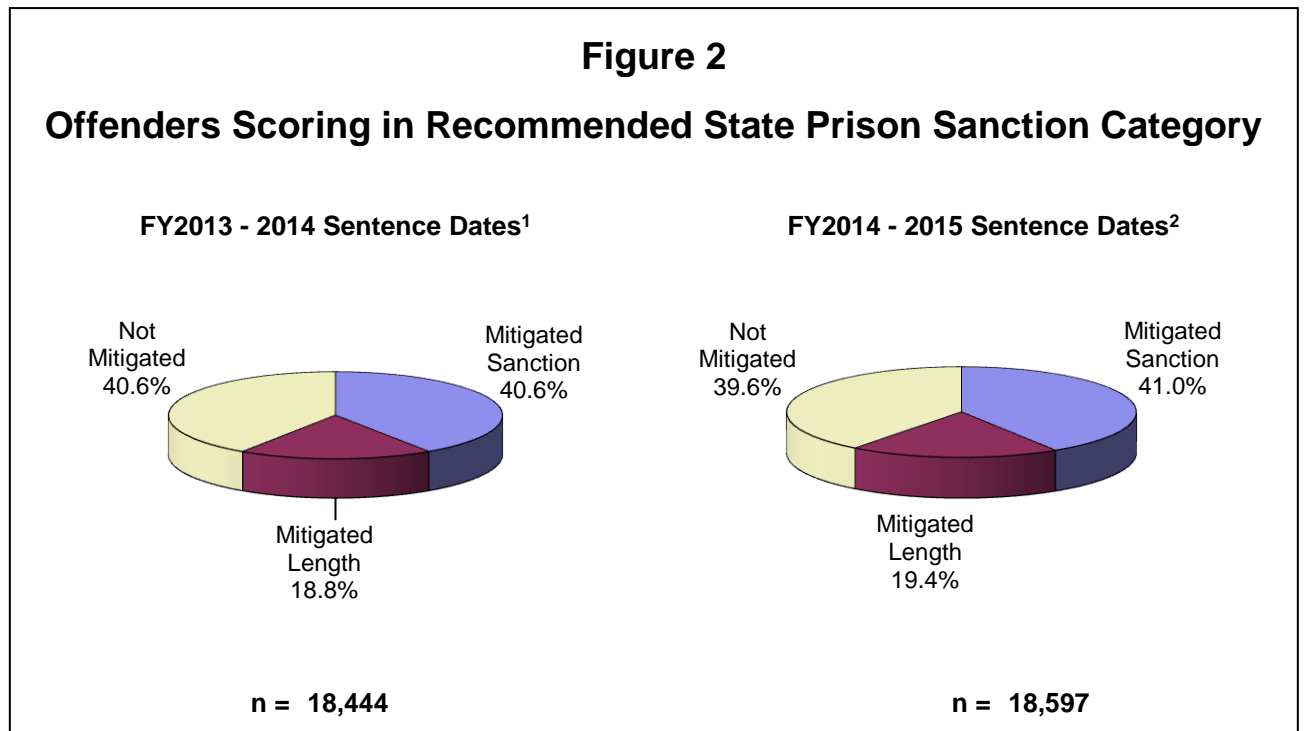
¹ Offense dates on or after October 1, 2012.

² Offense dates on or after October 1, 2013.

Table 11
Mitigation Rates* Among Offenders Scoring in Recommended State Prison Sanction Category

Category	FY2013-2014 Sentence Dates ¹		FY2014-2015 Sentence Dates ²	
	Number / Percent	Average Mitigated Length in Months	Number / Percent	Average Mitigated Length in Months
Mitigated Total	10,948 59.4%		11,228 60.4%	
Mitigated Sanction	7,487 40.6%		7,625 41.0%	
Mitigated Length	3,461 18.8%	26.6	3,603 19.4%	24.5
Not Mitigated	7,496 40.6%		7,369 39.6%	
Total	18,444 100.0%		18,597 100.0%	

* Mitigation of sanction occurs when an offender does not receive a prison sanction although a prison sanction is mandated by the Criminal Punishment Code. Mitigated length occurs when an offender receives a prison sentence below the 25% permissible discretion existing within the Criminal Punishment Code. This total rate includes both mitigated sanction and mitigated length sentences. Offenders scoring to state prison who receive a Drug Offender Probation sentence are not counted as mitigated.



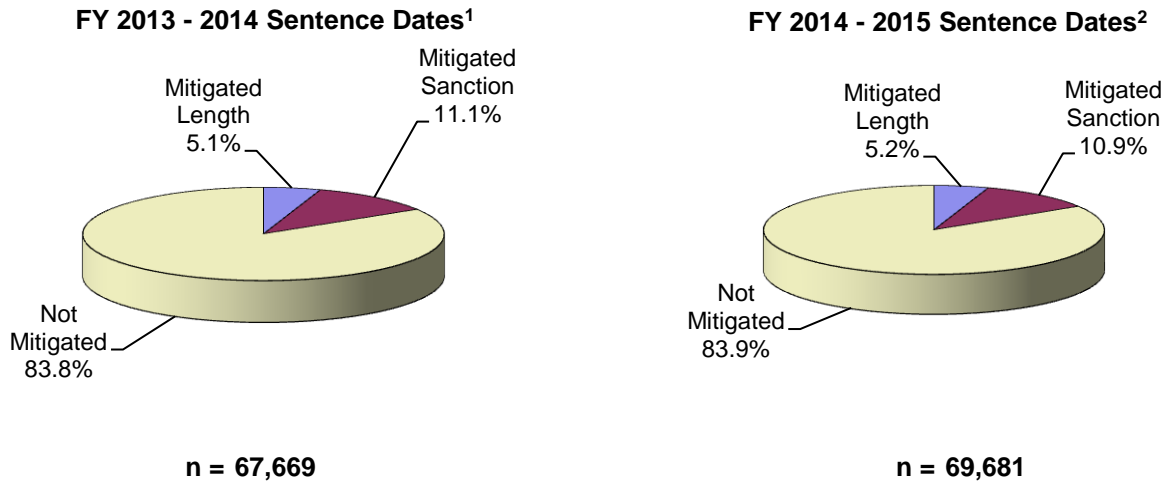
* Total points exceeding 44.0

¹ Offense dates on or after October 1, 2012.

² Offense dates on or after October 1, 2013.

Figure 3

Deviation Rates Below Permitted Sentences Among All Offenders Sentenced



**Table 12
Mitigated Sanction Rates* By Judicial Circuit**

Judicial Circuit	FY2013-2014 Sentence Dates ¹			FY2014-2015 Sentence Dates ²		
	Scoresheets Exceeding 44.0 Total Points	Scoresheets Mitigated	Mitigation Rate	Scoresheets Exceeding 44.0 Total Points	Scoresheets Mitigated	Mitigation Rate
01- Pensacola	1,031	345	33.5%	990	340	34.3%
02- Tallahassee	599	246	41.1%	533	231	43.3%
03- Lake City	317	148	46.7%	385	189	49.1%
04- Jacksonville	1,023	206	20.1%	1,084	246	22.7%
05- Tavares	1,168	264	22.6%	990	262	26.5%
06- Clearwater	1,827	536	29.3%	1,586	455	28.7%
07- Daytona	826	294	35.6%	538	172	32.0%
08- Gainesville	631	204	32.3%	614	200	32.6%
09- Orlando	1,301	550	42.3%	1,328	605	45.6%
10- Bartow	717	205	28.6%	760	183	24.1%
11- Miami	1,845	1,280	69.4%	1,934	1,339	69.2%
12- Sarasota	479	150	31.3%	520	163	31.3%
13- Tampa	1,348	921	68.3%	1,955	1,061	54.3%
14- Panama City	594	190	32.0%	666	242	36.3%
15- West Palm Beach	928	411	44.3%	903	455	50.4%
16- Key West	119	47	39.5%	121	57	47.1%
17- Ft. Lauderdale	1,112	622	55.9%	1,176	576	49.0%
18- Sanford	1,000	425	42.5%	854	386	45.2%
19- Ft. Pierce	568	136	23.9%	623	149	23.9%
20- Ft. Myers	1,011	307	30.4%	1,036	314	30.3%
Statewide	18,444	7,487	40.6%	18,596	7,625	41.0%

Missing: FY1415 = 1

* Mitigation of sanction occurs when an offender does not receive a prison sanction although a prison sanction is mandated by the Criminal Punishment Code. Those receiving Drug Offender Probation are not included.

¹ Offense dates on or after October 1, 2012.

² Offense dates on or after October 1, 2013.

Table 13

Mitigated Sanction Rates and Mitigated Length Rates* By Judicial Circuit

Judicial Circuit	FY2013-2014 Sentence Dates ¹			FY2014-2015 Sentence Dates ²		
	Scoresheets Exceeding 44.0 Total Points	Scoresheets Mitigated	Mitigation Rate	Scoresheets Exceeding 44.0 Total Points	Scoresheets Mitigated	Mitigation Rate
01- Pensacola	1,031	464	45.0%	990	441	44.5%
02- Tallahassee	599	432	72.1%	533	402	75.4%
03- Lake City	317	206	65.0%	385	251	65.2%
04- Jacksonville	1,023	481	47.0%	1,084	563	51.9%
05- Tavares	1,168	435	37.2%	990	372	37.6%
06- Clearwater	1,827	933	51.1%	1,586	843	53.2%
07- Daytona	826	471	57.0%	538	289	53.7%
08- Gainesville	631	379	60.1%	614	362	59.0%
09- Orlando	1,301	791	60.8%	1,328	789	59.4%
10- Bartow	717	346	48.3%	760	279	36.7%
11- Miami	1,845	1,670	90.5%	1,934	1,748	90.4%
12- Sarasota	479	196	40.9%	520	209	40.2%
13- Tampa	1,348	1,150	85.3%	1,955	1,633	83.5%
14- Panama City	594	315	53.0%	666	363	54.5%
15- West Palm Beach	928	641	69.1%	903	687	76.1%
16- Key West	119	75	63.0%	121	79	65.3%
17- Ft. Lauderdale	1,112	772	69.4%	1,176	755	64.2%
18- Sanford	1,000	567	56.7%	854	506	59.3%
19- Ft. Pierce	568	206	36.3%	623	223	35.8%
20- Ft. Myers	1,011	418	41.3%	1,036	433	41.8%
Statewide	18,444	10,948	59.4%	18,596	11,227	60.4%

Missing: FY1415 = 1

* Mitigation of sanction occurs when an offender does not receive a prison sanction although a prison sanction is mandated by the Criminal Punishment Code. Those receiving Drug Offender Probation are not included. Mitigated length occurs when an offender receives a prison sentence below the 25% permissible discretion existing within the Criminal Punishment Code. This total rate includes both mitigated sanction and mitigated length sentences.

¹ Offense dates on or after October 1, 2012.

² Offense dates on or after October 1, 2013.

Table 14
Mitigation Rates* Among Offenders Scoring in Recommended State Prison Sanction Category**

Offense Type		FY2013-2014 Sentence Dates ¹					FY2014-2015 Sentence Dates ²				
		Total Mitigated	Mitigated Sanction	Mitigated Length	Not Mitigated	Total	Total Mitigated	Mitigated Sanction	Mitigated Length	Not Mitigated	Total
Murder/Manslaughter	Attempt	66	60	6	16	82	67	58	9	18	85
	Complete	82	74	8	32	114	57	49	8	38	95
Sexual/Lewd Behavior	Attempt	33	30	3	16	49	48	37	11	17	65
	Complete	409	248	161	184	593	431	275	156	149	580
Robbery	Attempt	90	47	43	16	106	87	66	21	19	106
	Complete	740	484	256	223	963	700	470	230	222	922
Violent,Other	Attempt	38	23	15	5	43	38	22	16	7	45
	Complete	3,033	1,192	1,841	584	3,617	3,156	1,209	1,947	578	3,734
Burglary	Attempt	146	94	52	22	168	119	75	44	23	142
	Complete	3,073	1,490	1,583	712	3,785	2,797	1,351	1,446	761	3,558
Property Theft/Fraud/Damage	Attempt	3	2	1	0	3	2	1	1	1	3
	Complete	1,992	1,012	980	375	2,367	2,028	1,010	1,018	428	2,456
Drugs	Attempt	41	22	19	12	53	37	23	14	6	43
	Complete	3,273	1,753	1,520	767	4,040	3,292	1,686	1,606	812	4,104
Weapons	Attempt	3	3	0	0	3	4	4	0	2	6
	Complete	638	412	226	88	726	778	487	291	115	893
Other	Attempt	12	7	5	2	14	9	7	2	2	11
	Complete	1,311	543	768	407	1,718	1,344	539	805	405	1,749
Total		14,983	7,496	7,487	3,461	18,444	14,994	7,369	7,625	3,603	18,597

Missing: FY1415 = 1

* Mitigation of sanction occurs when an offender does not receive a prison sanction although a prison sanction is mandated by the Criminal Punishment Code. Those receiving Drug Offender Probation are not included. Mitigated length occurs when an offender receives a prison sentence below the 25% permissible discretion existing within the Criminal Punishment Code. This total rate includes both mitigated sanction and mitigated length sentences. **Total Points Exceeding 44.0.

¹ Offense dates on or after October 1, 2012.

² Offense dates on or after October 1, 2013.

APPENDICES

Inmate Prison Admissions by County of Commitment

From July 1, 2014 to June 30, 2015

This table represents the 67 counties in Florida and the number of inmates admitted into prison who were sentenced from each county or other states.

County	# Inmates Admitted to Prison	Percent
Alachua	630	2.1%
Baker	69	0.2%
Bay	816	2.7%
Bradford	176	0.6%
Brevard	934	3.1%
Broward	2,090	6.9%
Calhoun	55	0.2%
Charlotte	268	0.9%
Citrus	334	1.1%
Clay	370	1.2%
Collier	370	1.2%
Columbia	337	1.1%
Desoto	101	0.3%
Dixie	48	0.2%
Duval	1,861	6.1%
Escambia	810	2.7%
Flagler	155	0.5%
Franklin	42	0.1%
Gadsden	103	0.3%
Gilchrist	32	0.1%
Glades	40	0.1%
Gulf	50	0.2%
Hamilton	11	0.04%
Hardee	88	0.3%
Hendry	59	0.2%
Hernando	260	0.9%
Highlands	238	0.8%
Hillsborough	1,865	6.2%
Holmes	107	0.4%
Indian River	187	0.6%
Jackson	130	0.4%
Jefferson	28	0.1%
Lafayette	11	0.04%
Lake	419	1.4%
Lee	865	2.9%

County	# Inmates Admitted to Prison	Percent
Leon	711	2.4%
Levy	68	0.2%
Liberty	32	0.1%
Madison	31	0.1%
Manatee	484	1.6%
Marion	766	2.5%
Martin	309	1.0%
Miami-Dade	1,899	6.3%
Monroe	192	0.6%
Nassau	72	0.2%
Okaloosa	459	1.5%
Okeechobee	176	0.6%
Orange	1,429	4.7%
Osceola	422	1.4%
Palm Beach	1,070	3.5%
Pasco	831	2.7%
Pinellas	1,512	5.0%
Polk	1,788	5.9%
Putnam	275	0.9%
Santa Rosa	280	0.9%
Sarasota	449	1.5%
Seminole	508	1.7%
St. Johns	311	1.0%
St. Lucie	620	2.1%
Sumter	95	0.3%
Suwannee	148	0.5%
Taylor	91	0.3%
Union	42	0.1%
Volusia	1,007	3.3%
Wakulla	42	0.1%
Walton	133	0.4%
Washington	82	0.3%
00-Interstate	19	0.1%
Data Unavailable	673	
Total	30,985	100.0%

**Inmate Prison Admissions by County of Commitment
From July 1, 2014 to June 30, 2015**

Circuit	# Inmates Admitted to Prison	Percent	Rank
1-Pensacola	1,682	5.6%	10
2-Tallahassee	958	3.2%	18
3-Lake City	677	2.2%	19
4-Jacksonville	2,303	7.6%	2
5-Tarvares	1,874	6.2%	6
6-Clearwater	2,343	7.7%	1
7-Daytona	1,748	5.8%	9
8-Gainesville	1,017	3.4%	17
9-Orlando	1,851	6.1%	8
10-Lakeland	2,114	7.0%	3
11-Miami	1,899	6.3%	5
12-Sarasota	1,034	3.4%	16
13-Tampa	1,865	6.2%	7
14-Panama City	1,240	4.1%	14
15-West Palm Beach	1,070	3.5%	15
16-Key West	192	0.6%	20
17-Ft. Lauderdale	2,090	6.9%	4
18-Sanford	1,442	4.8%	12
19-Ft. Pierce	1,292	4.3%	13
20-Ft. Myers	1,602	5.3%	11
Data Unavailable	692		
TOTAL	30,985	100.0%	

**OFFENSE SEVERITY RANKING CHART
AS OF JULY 1, 2015**

Florida Statute	Felony Degree	Description
		(a) LEVEL 1
24.118(3)(a)	3rd	Counterfeit or altered state lottery ticket.
212.054(2)(b)	3rd	Discretionary sales surtax; limitations, administration, and collection.
212.15(2)(b)	3rd	Failure to remit sales taxes, amount greater than \$300 but less than \$20,000.
316.1935(1)	3rd	Fleeing or attempting to elude law enforcement officer.
319.30(5)	3rd	Sell, exchange, give away certificate of title or identification number plate.
319.35(1)(a)	3rd	Tamper, adjust, change, etc., an odometer.
320.26(1)(a)	3rd	Counterfeit, manufacture, or sell registration license plates or validation stickers.
322.212 (1)(a)-(c)	3rd	Possession of forged, stolen, counterfeit, or unlawfully issued driver license; possession of simulated identification.
322.212(4)	3rd	Supply or aid in supplying unauthorized driver license or identification card.
322.212(5)(a)	3rd	False application for driver license or identification card.
414.39(2)	3rd	Unauthorized use, possession, forgery, or alteration of food assistance program, Medicaid ID, value greater than \$200.
414.39(3)(a)	3rd	Fraudulent misappropriation of public assistance funds by employee/official, value more than \$200.
443.071(1)	3rd	False statement or representation to obtain or increase reemployment assistance benefits.
509.151(1)	3rd	Defraud an innkeeper, food or lodging value greater than \$300.
517.302(1)	3rd	Violation of the Florida Securities and Investor Protection Act.
562.27(1)	3rd	Possess still or still apparatus.
713.69	3rd	Tenant removes property upon which lien has accrued, value more than \$50.
812.014(3)(c)	3rd	Petit theft (3rd conviction); theft of any property not specified in subsection (2).
812.081(2)	3rd	Unlawfully makes or causes to be made a reproduction of a trade secret.
815.04(5)(a)	3rd	Offense against intellectual property (i.e., computer programs, data).
817.52(2)	3rd	Hiring with intent to defraud, motor vehicle services.
817.569(2)	3rd	Use of public record or public records information or providing false information to facilitate commission of a felony.

826.01	3rd	Bigamy.
828.122(3)	3rd	Fighting or baiting animals.
831.04(1)	3rd	Any erasure, alteration, etc., of any replacement deed, map, plat, or other document listed in s. 92.28.
831.31(1)(a)	3rd	Sell, deliver, or possess counterfeit controlled substances, all but s. 893.03(5) drugs.
832.041(1)	3rd	Stopping payment with intent to defraud \$150 or more.
832.05(2)(b) & (4)(c)	3rd	Knowing, making, issuing worthless checks \$150 or more or obtaining property in return for worthless check \$150 or more.
838.15(2)	3rd	Commercial bribe receiving.
838.16	3rd	Commercial bribery.
843.18	3rd	Fleeing by boat to elude a law enforcement officer.
847.011(1)(a)	3rd	Sell, distribute, etc., obscene, lewd, etc., material (2nd conviction).
849.01	3rd	Keeping gambling house.
849.09(1)(a)-(d)	3rd	Lottery; set up, promote, etc., or assist therein, conduct or advertise drawing for prizes, or dispose of property or money by means of lottery.
849.23	3rd	Gambling-related machines; “common offender” as to property rights.
849.25(2)	3rd	Engaging in bookmaking.
860.08	3rd	Interfere with a railroad signal.
860.13(1)(a)	3rd	Operate aircraft while under the influence.
893.13(2)(a)2.	3rd	Purchase of cannabis.
893.13(6)(a)	3rd	Possession of cannabis (more than 20 grams).
934.03(1)(a)	3rd	Intercepts, or procures any other person to intercept, any wire or oral communication.
		(b) LEVEL 2
379.2431 (1)(e)3.	3rd	Possession of 11 or fewer marine turtle eggs in violation of the Marine Turtle Protection Act.
379.2431 (1)(e)4.	3rd	Possession of more than 11 marine turtle eggs in violation of the Marine Turtle Protection Act.
403.413(6)(c)	3rd	Dumps waste litter exceeding 500 lbs. in weight or 100 cubic feet in volume or any quantity for commercial purposes, or hazardous waste.
517.07(2)	3rd	Failure to furnish a prospectus meeting requirements.
590.28(1)	3rd	Intentional burning of lands.
784.05(3)	3rd	Storing or leaving a loaded firearm within reach of minor who uses it to inflict injury or death.

787.04(1)	3rd	In violation of court order, take, entice, etc., minor beyond state limits.
806.13(1)(b)3.	3rd	Criminal mischief; damage \$1,000 or more to public communication or any other public service.
810.061(2)	3rd	Impairing or impeding telephone or power to a dwelling; facilitating or furthering burglary.
810.09(2)(e)	3rd	Trespassing on posted commercial horticulture property.
812.014(2)(c)1.	3rd	Grand theft, 3rd degree; \$300 or more but less than \$5,000.
812.014(2)(d)	3rd	Grand theft, 3rd degree; \$100 or more but less than \$300, taken from unenclosed curtilage of dwelling.
812.015(7)	3rd	Possession, use, or attempted use of an antishoplifting or inventory control device countermeasure.
817.234(1)(a)2.	3rd	False statement in support of insurance claim.
817.481(3)(a)	3rd	Obtain credit or purchase with false, expired, counterfeit, etc., credit card, value over \$300.
817.52(3)	3rd	Failure to redeliver hired vehicle.
817.54	3rd	With intent to defraud, obtain mortgage note, etc., by false representation.
817.60(5)	3rd	Dealing in credit cards of another.
817.60(6)(a)	3rd	Forgery; purchase goods, services with false card.
817.61	3rd	Fraudulent use of credit cards over \$100 or more within 6 months.
826.04	3rd	Knowingly marries or has sexual intercourse with person to whom related.
831.01	3rd	Forgery.
831.02	3rd	Uttering forged instrument; utters or publishes alteration with intent to defraud.
831.07	3rd	Forging bank bills, checks, drafts, or promissory notes.
831.08	3rd	Possessing 10 or more forged notes, bills, checks, or drafts.
831.09	3rd	Uttering forged notes, bills, checks, drafts, or promissory notes.
831.11	3rd	Bringing into the state forged bank bills, checks, drafts, or notes.
832.05(3)(a)	3rd	Cashing or depositing item with intent to defraud.
843.08	3rd	False personation.
893.13(2)(a)2.	3rd	Purchase of any s. 893.03(1)(c), (2)(c)1., (2)(c)2., (2)(c)3., (2)(c)5., (2)(c)6., (2)(c)7., (2)(c)8., (2)(c)9., (3), or (4) drugs other than cannabis.
893.147(2)	3rd	Manufacture or delivery of drug paraphernalia.
		(c) LEVEL 3

119.10(2)(b)	3rd	Unlawful use of confidential information from police reports.
316.066 (3)(b)-(d)	3rd	Unlawfully obtaining or using confidential crash reports.
316.193(2)(b)	3rd	Felony DUI, 3rd conviction.
316.1935(2)	3rd	Fleeing or attempting to elude law enforcement officer in patrol vehicle with siren and lights activated.
319.30(4)	3rd	Possession by junkyard of motor vehicle with identification number plate removed.
319.33(1)(a)	3rd	Alter or forge any certificate of title to a motor vehicle or mobile home.
319.33(1)(c)	3rd	Procure or pass title on stolen vehicle.
319.33(4)	3rd	With intent to defraud, possess, sell, etc., a blank, forged, or unlawfully obtained title or registration.
327.35(2)(b)	3rd	Felony BUI.
328.05(2)	3rd	Possess, sell, or counterfeit fictitious, stolen, or fraudulent titles or bills of sale of vessels.
328.07(4)	3rd	Manufacture, exchange, or possess vessel with counterfeit or wrong ID number.
376.302(5)	3rd	Fraud related to reimbursement for cleanup expenses under the Inland Protection Trust Fund.
379.2431 (1)(e)5.	3rd	Taking, disturbing, mutilating, destroying, causing to be destroyed, transferring, selling, offering to sell, molesting, or harassing marine turtles, marine turtle eggs, or marine turtle nests in violation of the Marine Turtle Protection Act.
379.2431 (1)(e)6.	3rd	Soliciting to commit or conspiring to commit a violation of the Marine Turtle Protection Act.
400.9935(4)(a) or (b)	3rd	Operating a clinic, or offering services requiring licensure, without a license.
400.9935(4)(e)	3rd	Filing a false license application or other required information or failing to report information.
440.1051(3)	3rd	False report of workers' compensation fraud or retaliation for making such a report.
501.001(2)(b)	2nd	Tampers with a consumer product or the container using materially false/misleading information.
624.401(4)(a)	3rd	Transacting insurance without a certificate of authority.
624.401(4)(b)1.	3rd	Transacting insurance without a certificate of authority; premium collected less than \$20,000.
626.902(1)(a) & (b)	3rd	Representing an unauthorized insurer.
697.08	3rd	Equity skimming.
790.15(3)	3rd	Person directs another to discharge firearm from a vehicle.
806.10(1)	3rd	Maliciously injure, destroy, or interfere with vehicles or equipment used in firefighting.
806.10(2)	3rd	Interferes with or assaults firefighter in performance of duty.
810.09(2)(c)	3rd	Trespass on property other than structure or conveyance armed with firearm or dangerous weapon.

812.014(2)(c)2.	3rd	Grand theft; \$5,000 or more but less than \$10,000.
812.0145(2)(c)	3rd	Theft from person 65 years of age or older; \$300 or more but less than \$10,000.
815.04(5)(b)	2nd	Computer offense devised to defraud or obtain property.
817.034(4)(a)3.	3rd	Engages in scheme to defraud (Florida Communications Fraud Act), property valued at less than \$20,000.
817.233	3rd	Burning to defraud insurer.
817.234 (8)(b) & (c)	3rd	Unlawful solicitation of persons involved in motor vehicle accidents.
817.234(11)(a)	3rd	Insurance fraud; property value less than \$20,000.
817.236	3rd	Filing a false motor vehicle insurance application.
817.2361	3rd	Creating, marketing, or presenting a false or fraudulent motor vehicle insurance card.
817.413(2)	3rd	Sale of used goods as new.
817.505(4)	3rd	Patient brokering.
828.12(2)	3rd	Tortures any animal with intent to inflict intense pain, serious physical injury, or death.
831.28(2)(a)	3rd	Counterfeiting a payment instrument with intent to defraud or possessing a counterfeit payment instrument.
831.29	2nd	Possession of instruments for counterfeiting driver licenses or identification cards.
838.021(3)(b)	3rd	Threatens unlawful harm to public servant.
843.19	3rd	Injure, disable, or kill police dog or horse.
860.15(3)	3rd	Overcharging for repairs and parts.
870.01(2)	3rd	Riot; inciting or encouraging.
893.13(1)(a)2.	3rd	Sell, manufacture, or deliver cannabis (or other s. 893.03(1)(c), (2)(c)1., (2)(c)2., (2)(c)3., (2)(c)5., (2)(c)6., (2)(c)7., (2)(c)8., (2)(c)9., (3), or (4) drugs).
893.13(1)(d)2.	2nd	Sell, manufacture, or deliver s. 893.03(1)(c), (2)(c)1., (2)(c)2., (2)(c)3., (2)(c)5., (2)(c)6., (2)(c)7., (2)(c)8., (2)(c)9., (3), or (4) drugs within 1,000 feet of university.
893.13(1)(f)2.	2nd	Sell, manufacture, or deliver s. 893.03(1)(c), (2)(c)1., (2)(c)2., (2)(c)3., (2)(c)5., (2)(c)6., (2)(c)7., (2)(c)8., (2)(c)9., (3), or (4) drugs within 1,000 feet of public housing facility.
893.13(6)(a)	3rd	Possession of any controlled substance other than felony possession of cannabis.
893.13(7)(a)8.	3rd	Withhold information from practitioner regarding previous receipt of or prescription for a controlled substance.
893.13(7)(a)9.	3rd	Obtain or attempt to obtain controlled substance by fraud, forgery, misrepresentation, etc.
893.13(7)(a)10.	3rd	Affix false or forged label to package of controlled substance.
893.13(7)(a)11.	3rd	Furnish false or fraudulent material information on any document or record required by chapter 893.

893.13(8)(a)1.	3rd	Knowingly assist a patient, other person, or owner of an animal in obtaining a controlled substance through deceptive, untrue, or fraudulent representations in or related to the practitioner's practice.
893.13(8)(a)2.	3rd	Employ a trick or scheme in the practitioner's practice to assist a patient, other person, or owner of an animal in obtaining a controlled substance.
893.13(8)(a)3.	3rd	Knowingly write a prescription for a controlled substance for a fictitious person.
893.13(8)(a)4.	3rd	Write a prescription for a controlled substance for a patient, other person, or an animal if the sole purpose of writing the prescription is a monetary benefit for the practitioner.
918.13(1)(a)	3rd	Alter, destroy, or conceal investigation evidence.
944.47 (1)(a)1. & 2.	3rd	Introduce contraband to correctional facility.
944.47(1)(c)	2nd	Possess contraband while upon the grounds of a correctional institution.
985.721	3rd	Escapes from a juvenile facility (secure detention or residential commitment facility).
		(d) LEVEL 4
316.1935(3)(a)	2nd	Driving at high speed or with wanton disregard for safety while fleeing or attempting to elude law enforcement officer who is in a patrol vehicle with siren and lights activated.
499.0051(1)	3rd	Failure to maintain or deliver pedigree papers.
499.0051(2)	3rd	Failure to authenticate pedigree papers.
499.0051(6)	2nd	Knowing sale or delivery, or possession with intent to sell, contraband prescription drugs.
517.07(1)	3rd	Failure to register securities.
517.12(1)	3rd	Failure of dealer, associated person, or issuer of securities to register.
784.07(2)(b)	3rd	Battery of law enforcement officer, firefighter, etc.
784.074(1)(c)	3rd	Battery of sexually violent predators facility staff.
784.075	3rd	Battery on detention or commitment facility staff.
784.078	3rd	Battery of facility employee by throwing, tossing, or expelling certain fluids or materials.
784.08(2)(c)	3rd	Battery on a person 65 years of age or older.
784.081(3)	3rd	Battery on specified official or employee.
784.082(3)	3rd	Battery by detained person on visitor or other detainee.
784.083(3)	3rd	Battery on code inspector.
784.085	3rd	Battery of child by throwing, tossing, projecting, or expelling certain fluids or materials.
787.03(1)	3rd	Interference with custody; wrongly takes minor from appointed guardian.

787.04(2)	3rd	Take, entice, or remove child beyond state limits with criminal intent pending custody proceedings.
787.04(3)	3rd	Carrying child beyond state lines with criminal intent to avoid producing child at custody hearing or delivering to designated person.
787.07	3rd	Human smuggling.
790.115(1)	3rd	Exhibiting firearm or weapon within 1,000 feet of a school.
790.115(2)(b)	3rd	Possessing electric weapon or device, destructive device, or other weapon on school property.
790.115(2)(c)	3rd	Possessing firearm on school property.
800.04(7)(c)	3rd	Lewd or lascivious exhibition; offender less than 18 years.
810.02(4)(a)	3rd	Burglary, or attempted burglary, of an unoccupied structure; unarmed; no assault or battery.
810.02(4)(b)	3rd	Burglary, or attempted burglary, of an unoccupied conveyance; unarmed; no assault or battery.
810.06	3rd	Burglary; possession of tools.
810.08(2)(c)	3rd	Trespass on property, armed with firearm or dangerous weapon.
812.014(2)(c)3.	3rd	Grand theft, 3rd degree \$10,000 or more but less than \$20,000.
812.014 (2)(c)4.-10.	3rd	Grand theft, 3rd degree, a will, firearm, motor vehicle, livestock, etc.
812.0195(2)	3rd	Dealing in stolen property by use of the Internet; property stolen \$300 or more.
817.563(1)	3rd	Sell or deliver substance other than controlled substance agreed upon, excluding s. 893.03(5) drugs.
817.568(2)(a)	3rd	Fraudulent use of personal identification information.
817.625(2)(a)	3rd	Fraudulent use of scanning device or reencoder.
828.125(1)	2nd	Kill, maim, or cause great bodily harm or permanent breeding disability to any registered horse or cattle.
837.02(1)	3rd	Perjury in official proceedings.
837.021(1)	3rd	Make contradictory statements in official proceedings.
838.022	3rd	Official misconduct.
839.13(2)(a)	3rd	Falsifying records of an individual in the care and custody of a state agency.
839.13(2)(c)	3rd	Falsifying records of the Department of Children and Families.
843.021	3rd	Possession of a concealed handcuff key by a person in custody.
843.025	3rd	Deprive law enforcement, correctional, or correctional probation officer of means of protection or communication.
843.15(1)(a)	3rd	Failure to appear while on bail for felony (bond estreatment or bond jumping).

847.0135(5)(c)	3rd	Lewd or lascivious exhibition using computer; offender less than 18 years.
874.05(1)(a)	3rd	Encouraging or recruiting another to join a criminal gang.
893.13(2)(a)1.	2nd	Purchase of cocaine (or other s. 893.03(1)(a), (b), or (d), (2)(a), (2)(b), or (2)(c)4. drugs).
914.14(2)	3rd	Witnesses accepting bribes.
914.22(1)	3rd	Force, threaten, etc., witness, victim, or informant.
914.23(2)	3rd	Retaliation against a witness, victim, or informant, no bodily injury.
918.12	3rd	Tampering with jurors.
934.215	3rd	Use of two-way communications device to facilitate commission of a crime.
		(e) LEVEL 5
316.027(2)(a)	3rd	Accidents involving personal injuries other than serious bodily injury, failure to stop; leaving scene.
316.1935(4)(a)	2nd	Aggravated fleeing or eluding.
322.34(6)	3rd	Careless operation of motor vehicle with suspended license, resulting in death or serious bodily injury.
327.30(5)	3rd	Vessel accidents involving personal injury; leaving scene.
379.367(4)	3rd	Willful molestation of a commercial harvester's spiny lobster trap, line, or buoy.
379.3671 (2)(c)3.	3rd	Willful molestation, possession, or removal of a commercial harvester's trap contents or trap gear by another harvester.
381.0041(11)(b)	3rd	Donate blood, plasma, or organs knowing HIV positive.
440.10(1)(g)	2nd	Failure to obtain workers' compensation coverage.
440.105(5)	2nd	Unlawful solicitation for the purpose of making workers' compensation claims.
440.381(2)	2nd	Submission of false, misleading, or incomplete information with the purpose of avoiding or reducing workers' compensation premiums.
624.401(4)(b)2.	2nd	Transacting insurance without a certificate or authority; premium collected \$20,000 or more but less than \$100,000.
626.902(1)(c)	2nd	Representing an unauthorized insurer; repeat offender.
790.01(2)	3rd	Carrying a concealed firearm.
790.162	2nd	Threat to throw or discharge destructive device.
790.163(1)	2nd	False report of deadly explosive or weapon of mass destruction.
790.221(1)	2nd	Possession of short-barreled shotgun or machine gun.
790.23	2nd	Felons in possession of firearms, ammunition, or electronic weapons or devices.

796.05(1)	2nd	Live on earnings of a prostitute; 1st offense.
800.04(6)(c)	3rd	Lewd or lascivious conduct; offender less than 18 years of age.
800.04(7)(b)	2nd	Lewd or lascivious exhibition; offender 18 years of age or older.
806.111(1)	3rd	Possess, manufacture, or dispense fire bomb with intent to damage any structure or property.
812.0145(2)(b)	2nd	Theft from person 65 years of age or older; \$10,000 or more but less than \$50,000.
812.015(8)	3rd	Retail theft; property stolen is valued at \$300 or more and one or more specified acts.
812.019(1)	2nd	Stolen property; dealing in or trafficking in.
812.131(2)(b)	3rd	Robbery by sudden snatching.
812.16(2)	3rd	Owning, operating, or conducting a chop shop.
817.034(4)(a)2.	2nd	Communications fraud, value \$20,000 to \$50,000.
817.234(11)(b)	2nd	Insurance fraud; property value \$20,000 or more but less than \$100,000.
817.2341(1), (2)(a) & (3)(a)	3rd	Filing false financial statements, making false entries of material fact or false statements regarding property values relating to the solvency of an insuring entity.
817.568(2)(b)	2nd	Fraudulent use of personal identification information; value of benefit, services received, payment avoided, or amount of injury or fraud, \$5,000 or more or use of personal identification information of 10 or more persons.
817.625(2)(b)	2nd	Second or subsequent fraudulent use of scanning device or reencoder.
825.1025(4)	3rd	Lewd or lascivious exhibition in the presence of an elderly person or disabled adult.
827.071(4)	2nd	Possess with intent to promote any photographic material, motion picture, etc., which includes sexual conduct by a child.
827.071(5)	3rd	Possess, control, or intentionally view any photographic material, motion picture, etc., which includes sexual conduct by a child.
839.13(2)(b)	2nd	Falsifying records of an individual in the care and custody of a state agency involving great bodily harm or death.
843.01	3rd	Resist officer with violence to person; resist arrest with violence.
847.0135(5)(b)	2nd	Lewd or lascivious exhibition using computer; offender 18 years or older.
847.0137 (2) & (3)	3rd	Transmission of pornography by electronic device or equipment.
847.0138 (2) & (3)	3rd	Transmission of material harmful to minors to a minor by electronic device or equipment.
874.05(1)(b)	2nd	Encouraging or recruiting another to join a criminal gang; second or subsequent offense.
874.05(2)(a)	2nd	Encouraging or recruiting person under 13 years of age to join a criminal gang.
893.13(1)(a)1.	2nd	Sell, manufacture, or deliver cocaine (or other s. 893.03(1)(a), (1)(b), (1)(d), (2)(a), (2)(b), or (2)(c)4. drugs).
893.13(1)(c)2.	2nd	Sell, manufacture, or deliver cannabis (or other s. 893.03(1)(c), (2)(c)1., (2)(c)2., (2)(c)3., (2)(c)5., (2)(c)6., (2)(c)7., (2)(c)8., (2)(c)9., (3), or (4) drugs) within 1,000

		feet of a child care facility, school, or state, county, or municipal park or publicly owned recreational facility or community center.
893.13(1)(d)1.	1st	Sell, manufacture, or deliver cocaine (or other s. 893.03(1)(a), (1)(b), (1)(d), (2)(a), (2)(b), or (2)(c)4. drugs) within 1,000 feet of university.
893.13(1)(e)2.	2nd	Sell, manufacture, or deliver cannabis or other drug prohibited under s. 893.03(1)(c), (2)(c)1., (2)(c)2., (2)(c)3., (2)(c)5., (2)(c)6., (2)(c)7., (2)(c)8., (2)(c)9., (3), or (4) within 1,000 feet of property used for religious services or a specified business site.
893.13(1)(f)1.	1st	Sell, manufacture, or deliver cocaine (or other s. 893.03(1)(a), (1)(b), (1)(d), or (2)(a), (2)(b), or (2)(c)4. drugs) within 1,000 feet of public housing facility.
893.13(4)(b)	2nd	Deliver to minor cannabis (or other s. 893.03(1)(c), (2)(c)1., (2)(c)2., (2)(c)3., (2)(c)5., (2)(c)6., (2)(c)7., (2)(c)8., (2)(c)9., (3), or (4) drugs).
893.1351(1)	3rd	Ownership, lease, or rental for trafficking in or manufacturing of controlled substance.
		(f) LEVEL 6
316.027(2)(b)	2nd	Leaving the scene of a crash involving serious bodily injury.
316.193(2)(b)	3rd	Felony DUI, 4th or subsequent conviction.
400.9935(4)(c)	2nd	Operating a clinic, or offering services requiring licensure, without a license.
499.0051(3)	2nd	Knowing forgery of pedigree papers.
499.0051(4)	2nd	Knowing purchase or receipt of prescription drug from unauthorized person.
499.0051(5)	2nd	Knowing sale or transfer of prescription drug to unauthorized person.
775.0875(1)	3rd	Taking firearm from law enforcement officer.
784.021(1)(a)	3rd	Aggravated assault; deadly weapon without intent to kill.
784.021(1)(b)	3rd	Aggravated assault; intent to commit felony.
784.041	3rd	Felony battery; domestic battery by strangulation.
784.048(3)	3rd	Aggravated stalking; credible threat.
784.048(5)	3rd	Aggravated stalking of person under 16.
784.07(2)(c)	2nd	Aggravated assault on law enforcement officer.
784.074(1)(b)	2nd	Aggravated assault on sexually violent predators facility staff.
784.08(2)(b)	2nd	Aggravated assault on a person 65 years of age or older.
784.081(2)	2nd	Aggravated assault on specified official or employee.
784.082(2)	2nd	Aggravated assault by detained person on visitor or other detainee.
784.083(2)	2nd	Aggravated assault on code inspector.
787.02(2)	3rd	False imprisonment; restraining with purpose other than those in s. 787.01.

790.115(2)(d)	2nd	Discharging firearm or weapon on school property.
790.161(2)	2nd	Make, possess, or throw destructive device with intent to do bodily harm or damage property.
790.164(1)	2nd	False report of deadly explosive, weapon of mass destruction, or act of arson or violence to state property.
790.19	2nd	Shooting or throwing deadly missiles into dwellings, vessels, or vehicles.
794.011(8)(a)	3rd	Solicitation of minor to participate in sexual activity by custodial adult.
794.05(1)	2nd	Unlawful sexual activity with specified minor.
800.04(5)(d)	3rd	Lewd or lascivious molestation; victim 12 years of age or older but less than 16 years of age; offender less than 18 years.
800.04(6)(b)	2nd	Lewd or lascivious conduct; offender 18 years of age or older.
806.031(2)	2nd	Arson resulting in great bodily harm to firefighter or any other person.
810.02(3)(c)	2nd	Burglary of occupied structure; unarmed; no assault or battery.
810.145(8)(b)	2nd	Video voyeurism; certain minor victims; 2nd or subsequent offense.
812.014(2)(b)1.	2nd	Property stolen \$20,000 or more, but less than \$100,000, grand theft in 2nd degree.
812.014(6)	2nd	Theft; property stolen \$3,000 or more; coordination of others.
812.015(9)(a)	2nd	Retail theft; property stolen \$300 or more; second or subsequent conviction.
812.015(9)(b)	2nd	Retail theft; property stolen \$3,000 or more; coordination of others.
812.13(2)(c)	2nd	Robbery, no firearm or other weapon (strong-arm robbery).
817.4821(5)	2nd	Possess cloning paraphernalia with intent to create cloned cellular telephones.
825.102(1)	3rd	Abuse of an elderly person or disabled adult.
825.102(3)(c)	3rd	Neglect of an elderly person or disabled adult.
825.1025(3)	3rd	Lewd or lascivious molestation of an elderly person or disabled adult.
825.103(3)(c)	3rd	Exploiting an elderly person or disabled adult and property is valued at less than \$10,000.
827.03(2)(c)	3rd	Abuse of a child.
827.03(2)(d)	3rd	Neglect of a child.
827.071(2) & (3)	2nd	Use or induce a child in a sexual performance, or promote or direct such performance.
836.05	2nd	Threats; extortion.
836.10	2nd	Written threats to kill or do bodily injury.

843.12	3rd	Aids or assists person to escape.
847.011	3rd	Distributing, offering to distribute, or possessing with intent to distribute obscene materials depicting minors.
847.012	3rd	Knowingly using a minor in the production of materials harmful to minors.
847.0135(2)	3rd	Facilitates sexual conduct of or with a minor or the visual depiction of such conduct.
914.23	2nd	Retaliation against a witness, victim, or informant, with bodily injury.
944.35(3)(a)2.	3rd	Committing malicious battery upon or inflicting cruel or inhuman treatment on an inmate or offender on community supervision, resulting in great bodily harm.
944.40	2nd	Escapes.
944.46	3rd	Harboring, concealing, aiding escaped prisoners.
944.47(1)(a)5.	2nd	Introduction of contraband (firearm, weapon, or explosive) into correctional facility.
951.22(1)	3rd	Intoxicating drug, firearm, or weapon introduced into county facility.
		(g) LEVEL 7
316.027(2)(c)	1st	Accident involving death, failure to stop; leaving scene.
316.193(3)(c)2.	3rd	DUI resulting in serious bodily injury.
316.1935(3)(b)	1st	Causing serious bodily injury or death to another person; driving at high speed or with wanton disregard for safety while fleeing or attempting to elude law enforcement officer who is in a patrol vehicle with siren and lights activated.
327.35(3)(c)2.	3rd	Vessel BUI resulting in serious bodily injury.
402.319(2)	2nd	Misrepresentation and negligence or intentional act resulting in great bodily harm, permanent disfigurement, permanent disability, or death.
409.920 (2)(b)1.a.	3rd	Medicaid provider fraud; \$10,000 or less.
409.920 (2)(b)1.b.	2nd	Medicaid provider fraud; more than \$10,000, but less than \$50,000.
456.065(2)	3rd	Practicing a health care profession without a license.
456.065(2)	2nd	Practicing a health care profession without a license which results in serious bodily injury.
458.327(1)	3rd	Practicing medicine without a license.
459.013(1)	3rd	Practicing osteopathic medicine without a license.
460.411(1)	3rd	Practicing chiropractic medicine without a license.
461.012(1)	3rd	Practicing podiatric medicine without a license.
462.17	3rd	Practicing naturopathy without a license.
463.015(1)	3rd	Practicing optometry without a license.

464.016(1)	3rd	Practicing nursing without a license.
465.015(2)	3rd	Practicing pharmacy without a license.
466.026(1)	3rd	Practicing dentistry or dental hygiene without a license.
467.201	3rd	Practicing midwifery without a license.
468.366	3rd	Delivering respiratory care services without a license.
483.828(1)	3rd	Practicing as clinical laboratory personnel without a license.
483.901(9)	3rd	Practicing medical physics without a license.
484.013(1)(c)	3rd	Preparing or dispensing optical devices without a prescription.
484.053	3rd	Dispensing hearing aids without a license.
494.0018(2)	1st	Conviction of any violation of chapter 494 in which the total money and property unlawfully obtained exceeded \$50,000 and there were five or more victims.
560.123(8)(b)1.	3rd	Failure to report currency or payment instruments exceeding \$300 but less than \$20,000 by a money services business.
560.125(5)(a)	3rd	Money services business by unauthorized person, currency or payment instruments exceeding \$300 but less than \$20,000.
655.50(10)(b)1.	3rd	Failure to report financial transactions exceeding \$300 but less than \$20,000 by financial institution.
775.21(10)(a)	3rd	Sexual predator; failure to register; failure to renew driver license or identification card; other registration violations.
775.21(10)(b)	3rd	Sexual predator working where children regularly congregate.
775.21(10)(g)	3rd	Failure to report or providing false information about a sexual predator; harbor or conceal a sexual predator.
782.051(3)	2nd	Attempted felony murder of a person by a person other than the perpetrator or the perpetrator of an attempted felony.
782.07(1)	2nd	Killing of a human being by the act, procurement, or culpable negligence of another (manslaughter).
782.071	2nd	Killing of a human being or unborn child by the operation of a motor vehicle in a reckless manner (vehicular homicide).
782.072	2nd	Killing of a human being by the operation of a vessel in a reckless manner (vessel homicide).
784.045(1)(a)1.	2nd	Aggravated battery; intentionally causing great bodily harm or disfigurement.
784.045(1)(a)2.	2nd	Aggravated battery; using deadly weapon.
784.045(1)(b)	2nd	Aggravated battery; perpetrator aware victim pregnant.
784.048(4)	3rd	Aggravated stalking; violation of injunction or court order.
784.048(7)	3rd	Aggravated stalking; violation of court order.
784.07(2)(d)	1st	Aggravated battery on law enforcement officer.

784.074(1)(a)	1st	Aggravated battery on sexually violent predators facility staff.
784.08(2)(a)	1st	Aggravated battery on a person 65 years of age or older.
784.081(1)	1st	Aggravated battery on specified official or employee.
784.082(1)	1st	Aggravated battery by detained person on visitor or other detainee.
784.083(1)	1st	Aggravated battery on code inspector.
787.06(3)(a)2.	1st	Human trafficking using coercion for labor and services of an adult.
787.06(3)(e)2.	1st	Human trafficking using coercion for labor and services by the transfer or transport of an adult from outside Florida to within the state.
790.07(4)	1st	Specified weapons violation subsequent to previous conviction of s. 790.07(1) or (2).
790.16(1)	1st	Discharge of a machine gun under specified circumstances.
790.165(2)	2nd	Manufacture, sell, possess, or deliver hoax bomb.
790.165(3)	2nd	Possessing, displaying, or threatening to use any hoax bomb while committing or attempting to commit a felony.
790.166(3)	2nd	Possessing, selling, using, or attempting to use a hoax weapon of mass destruction.
790.166(4)	2nd	Possessing, displaying, or threatening to use a hoax weapon of mass destruction while committing or attempting to commit a felony.
790.23	1st,PBL	Possession of a firearm by a person who qualifies for the penalty enhancements provided for in s. 874.04.
794.08(4)	3rd	Female genital mutilation; consent by a parent, guardian, or a person in custodial authority to a victim younger than 18 years of age.
796.05(1)	1st	Live on earnings of a prostitute; 2nd offense.
796.05(1)	1st	Live on earnings of a prostitute; 3rd and subsequent offense.
800.04(5)(c)1.	2nd	Lewd or lascivious molestation; victim younger than 12 years of age; offender younger than 18 years of age.
800.04(5)(c)2.	2nd	Lewd or lascivious molestation; victim 12 years of age or older but younger than 16 years of age; offender 18 years of age or older.
800.04(5)(e)	1st	Lewd or lascivious molestation; victim 12 years of age or older but younger than 16 years; offender 18 years or older; prior conviction for specified sex offense.
806.01(2)	2nd	Maliciously damage structure by fire or explosive.
810.02(3)(a)	2nd	Burglary of occupied dwelling; unarmed; no assault or battery.
810.02(3)(b)	2nd	Burglary of unoccupied dwelling; unarmed; no assault or battery.
810.02(3)(d)	2nd	Burglary of occupied conveyance; unarmed; no assault or battery.
810.02(3)(e)	2nd	Burglary of authorized emergency vehicle.
812.014(2)(a)1.	1st	Property stolen, valued at \$100,000 or more or a semitrailer deployed by a law enforcement officer; property stolen while causing other property damage; 1st degree grand theft.

812.014(2)(b)2.	2nd	Property stolen, cargo valued at less than \$50,000, grand theft in 2nd degree.
812.014(2)(b)3.	2nd	Property stolen, emergency medical equipment; 2nd degree grand theft.
812.014(2)(b)4.	2nd	Property stolen, law enforcement equipment from authorized emergency vehicle.
812.0145(2)(a)	1st	Theft from person 65 years of age or older; \$50,000 or more.
812.019(2)	1st	Stolen property; initiates, organizes, plans, etc., the theft of property and traffics in stolen property.
812.131(2)(a)	2nd	Robbery by sudden snatching.
812.133(2)(b)	1st	Carjacking; no firearm, deadly weapon, or other weapon.
817.034(4)(a)1.	1st	Communications fraud, value greater than \$50,000.
817.234(8)(a)	2nd	Solicitation of motor vehicle accident victims with intent to defraud.
817.234(9)	2nd	Organizing, planning, or participating in an intentional motor vehicle collision.
817.234(11)(c)	1st	Insurance fraud; property value \$100,000 or more.
817.2341 (2)(b) & (3)(b)	1st	Making false entries of material fact or false statements regarding property values relating to the solvency of an insuring entity which are a significant cause of the insolvency of that entity.
817.535(2)(a)	3rd	Filing false lien or other unauthorized document.
825.102(3)(b)	2nd	Neglecting an elderly person or disabled adult causing great bodily harm, disability, or disfigurement.
825.103(3)(b)	2nd	Exploiting an elderly person or disabled adult and property is valued at \$10,000 or more, but less than \$50,000.
827.03(2)(b)	2nd	Neglect of a child causing great bodily harm, disability, or disfigurement.
827.04(3)	3rd	Impregnation of a child under 16 years of age by person 21 years of age or older.
837.05(2)	3rd	Giving false information about alleged capital felony to a law enforcement officer.
838.015	2nd	Bribery.
838.016	2nd	Unlawful compensation or reward for official behavior.
838.021(3)(a)	2nd	Unlawful harm to a public servant.
838.22	2nd	Bid tampering.
843.0855(2)	3rd	Impersonation of a public officer or employee.
843.0855(3)	3rd	Unlawful simulation of legal process.
843.0855(4)	3rd	Intimidation of a public officer or employee.
847.0135(3)	3rd	Solicitation of a child, via a computer service, to commit an unlawful sex act.

847.0135(4)	2nd	Traveling to meet a minor to commit an unlawful sex act.
872.06	2nd	Abuse of a dead human body.
874.05(2)(b)	1st	Encouraging or recruiting person under 13 to join a criminal gang; second or subsequent offense.
874.10	1st,PBL	Knowingly initiates, organizes, plans, finances, directs, manages, or supervises criminal gang-related activity.
893.13(1)(c)1.	1st	Sell, manufacture, or deliver cocaine (or other drug prohibited under s. 893.03(1)(a), (1)(b), (1)(d), (2)(a), (2)(b), or (2)(c)4.) within 1,000 feet of a child care facility, school, or state, county, or municipal park or publicly owned recreational facility or community center.
893.13(1)(e)1.	1st	Sell, manufacture, or deliver cocaine or other drug prohibited under s. 893.03(1)(a), (1)(b), (1)(d), (2)(a), (2)(b), or (2)(c)4., within 1,000 feet of property used for religious services or a specified business site.
893.13(4)(a)	1st	Deliver to minor cocaine (or other s. 893.03(1)(a), (1)(b), (1)(d), (2)(a), (2)(b), or (2)(c)4. drugs).
893.135(1)(a)1.	1st	Trafficking in cannabis, more than 25 lbs., less than 2,000 lbs.
893.135 (1)(b)1.a.	1st	Trafficking in cocaine, more than 28 grams, less than 200 grams.
893.135 (1)(c)1.a.	1st	Trafficking in illegal drugs, more than 4 grams, less than 14 grams.
893.135 (1)(c)2.a.	1st	Trafficking in hydrocodone, 14 grams or more, less than 28 grams.
893.135 (1)(c)2.b.	1st	Trafficking in hydrocodone, 28 grams or more, less than 50 grams.
893.135 (1)(c)3.a.	1st	Trafficking in oxycodone, 7 grams or more, less than 14 grams.
893.135 (1)(c)3.b.	1st	Trafficking in oxycodone, 14 grams or more, less than 25 grams.
893.135(1)(d)1.	1st	Trafficking in phencyclidine, more than 28 grams, less than 200 grams.
893.135(1)(e)1.	1st	Trafficking in methaqualone, more than 200 grams, less than 5 kilograms.
893.135(1)(f)1.	1st	Trafficking in amphetamine, more than 14 grams, less than 28 grams.
893.135 (1)(g)1.a.	1st	Trafficking in flunitrazepam, 4 grams or more, less than 14 grams.
893.135 (1)(h)1.a.	1st	Trafficking in gamma-hydroxybutyric acid (GHB), 1 kilogram or more, less than 5 kilograms.
893.135 (1)(j)1.a.	1st	Trafficking in 1,4-Butanediol, 1 kilogram or more, less than 5 kilograms.
893.135 (1)(k)2.a.	1st	Trafficking in Phenethylamines, 10 grams or more, less than 200 grams.
893.1351(2)	2nd	Possession of place for trafficking in or manufacturing of controlled substance.
896.101(5)(a)	3rd	Money laundering, financial transactions exceeding \$300 but less than \$20,000.
896.104(4)(a)1.	3rd	Structuring transactions to evade reporting or registration requirements, financial transactions exceeding \$300 but less than \$20,000.
943.0435(4)(c)	2nd	Sexual offender vacating permanent residence; failure to comply with reporting requirements.

943.0435(8)	2nd	Sexual offender; remains in state after indicating intent to leave; failure to comply with reporting requirements.
943.0435(9)(a)	3rd	Sexual offender; failure to comply with reporting requirements.
943.0435(13)	3rd	Failure to report or providing false information about a sexual offender; harbor or conceal a sexual offender.
943.0435(14)	3rd	Sexual offender; failure to report and reregister; failure to respond to address verification; providing false registration information.
944.607(9)	3rd	Sexual offender; failure to comply with reporting requirements.
944.607(10)(a)	3rd	Sexual offender; failure to submit to the taking of a digitized photograph.
944.607(12)	3rd	Failure to report or providing false information about a sexual offender; harbor or conceal a sexual offender.
944.607(13)	3rd	Sexual offender; failure to report and reregister; failure to respond to address verification; providing false registration information.
985.4815(10)	3rd	Sexual offender; failure to submit to the taking of a digitized photograph.
985.4815(12)	3rd	Failure to report or providing false information about a sexual offender; harbor or conceal a sexual offender.
985.4815(13)	3rd	Sexual offender; failure to report and reregister; failure to respond to address verification; providing false registration information.
		(h) LEVEL 8
316.193 (3)(c)3.a.	2nd	DUI manslaughter.
316.1935(4)(b)	1st	Aggravated fleeing or attempted eluding with serious bodily injury or death.
327.35(3)(c)3.	2nd	Vessel BUI manslaughter.
499.0051(7)	1st	Knowing trafficking in contraband prescription drugs.
499.0051(8)	1st	Knowing forgery of prescription labels or prescription drug labels.
560.123(8)(b)2.	2nd	Failure to report currency or payment instruments totaling or exceeding \$20,000, but less than \$100,000 by money transmitter.
560.125(5)(b)	2nd	Money transmitter business by unauthorized person, currency or payment instruments totaling or exceeding \$20,000, but less than \$100,000.
655.50(10)(b)2.	2nd	Failure to report financial transactions totaling or exceeding \$20,000, but less than \$100,000 by financial institutions.
777.03(2)(a)	1st	Accessory after the fact, capital felony.
782.04(4)	2nd	Killing of human without design when engaged in act or attempt of any felony other than arson, sexual battery, robbery, burglary, kidnapping, aggravated fleeing or eluding with serious bodily injury or death, aircraft piracy, or unlawfully discharging bomb.
782.051(2)	1st	Attempted felony murder while perpetrating or attempting to perpetrate a felony not enumerated in s. 782.04(3).
782.071(1)(b)	1st	Committing vehicular homicide and failing to render aid or give information.
782.072(2)	1st	Committing vessel homicide and failing to render aid or give information.

787.06(3)(a)1.	1st	Human trafficking for labor and services of a child.
787.06(3)(b)	1st	Human trafficking using coercion for commercial sexual activity of an adult.
787.06(3)(c)2.	1st	Human trafficking using coercion for labor and services of an unauthorized alien adult.
787.06(3)(e)1.	1st	Human trafficking for labor and services by the transfer or transport of a child from outside Florida to within the state.
787.06(3)(f)2.	1st	Human trafficking using coercion for commercial sexual activity by the transfer or transport of any adult from outside Florida to within the state.
790.161(3)	1st	Discharging a destructive device which results in bodily harm or property damage.
794.011(5)(a)	1st	Sexual battery; victim 12 years of age or older but younger than 18 years; offender 18 years or older; offender does not use physical force likely to cause serious injury.
794.011(5)(b)	2nd	Sexual battery; victim and offender 18 years of age or older; offender does not use physical force likely to cause serious injury.
794.011(5)(c)	2nd	Sexual battery; victim 12 years of age or older; offender younger than 18 years; offender does not use physical force likely to cause injury.
794.011(5)(d)	1st	Sexual battery; victim 12 years of age or older; offender does not use physical force likely to cause serious injury; prior conviction for specified sex offense.
794.08(3)	2nd	Female genital mutilation, removal of a victim younger than 18 years of age from this state.
800.04(4)(b)	2nd	Lewd or lascivious battery.
800.04(4)(c)	1st	Lewd or lascivious battery; offender 18 years of age or older; prior conviction for specified sex offense.
806.01(1)	1st	Maliciously damage dwelling or structure by fire or explosive, believing person in structure.
810.02(2)(a)	1st,PBL	Burglary with assault or battery.
810.02(2)(b)	1st,PBL	Burglary; armed with explosives or dangerous weapon.
810.02(2)(c)	1st	Burglary of a dwelling or structure causing structural damage or \$1,000 or more property damage.
812.014(2)(a)2.	1st	Property stolen; cargo valued at \$50,000 or more, grand theft in 1st degree.
812.13(2)(b)	1st	Robbery with a weapon.
812.135(2)(c)	1st	Home-invasion robbery, no firearm, deadly weapon, or other weapon.
817.535(2)(b)	2nd	Filing false lien or other unauthorized document; second or subsequent offense.
817.535(3)(a)	2nd	Filing false lien or other unauthorized document; property owner is a public officer or employee.
817.535(4)(a)1.	2nd	Filing false lien or other unauthorized document; defendant is incarcerated or under supervision.
817.535(5)(a)	2nd	Filing false lien or other unauthorized document; owner of the property incurs financial loss as a result of the false instrument.
817.568(6)	2nd	Fraudulent use of personal identification information of an individual under the age of 18.
825.102(2)	1st	Aggravated abuse of an elderly person or disabled adult.

825.1025(2)	2nd	Lewd or lascivious battery upon an elderly person or disabled adult.
825.103(3)(a)	1st	Exploiting an elderly person or disabled adult and property is valued at \$50,000 or more.
837.02(2)	2nd	Perjury in official proceedings relating to prosecution of a capital felony.
837.021(2)	2nd	Making contradictory statements in official proceedings relating to prosecution of a capital felony.
860.121(2)(c)	1st	Shooting at or throwing any object in path of railroad vehicle resulting in great bodily harm.
860.16	1st	Aircraft piracy.
893.13(1)(b)	1st	Sell or deliver in excess of 10 grams of any substance specified in s. 893.03(1)(a) or (b).
893.13(2)(b)	1st	Purchase in excess of 10 grams of any substance specified in s. 893.03(1)(a) or (b).
893.13(6)(c)	1st	Possess in excess of 10 grams of any substance specified in s. 893.03(1)(a) or (b).
893.135(1)(a)2.	1st	Trafficking in cannabis, more than 2,000 lbs., less than 10,000 lbs.
893.135 (1)(b)1.b.	1st	Trafficking in cocaine, more than 200 grams, less than 400 grams.
893.135 (1)(c)1.b.	1st	Trafficking in illegal drugs, more than 14 grams, less than 28 grams.
893.135 (1)(c)2.c.	1st	Trafficking in hydrocodone, 50 grams or more, less than 200 grams.
893.135 (1)(c)3.c.	1st	Trafficking in oxycodone, 25 grams or more, less than 100 grams.
893.135 (1)(d)1.b.	1st	Trafficking in phencyclidine, more than 200 grams, less than 400 grams.
893.135 (1)(e)1.b.	1st	Trafficking in methaqualone, more than 5 kilograms, less than 25 kilograms.
893.135 (1)(f)1.b.	1st	Trafficking in amphetamine, more than 28 grams, less than 200 grams.
893.135 (1)(g)1.b.	1st	Trafficking in flunitrazepam, 14 grams or more, less than 28 grams.
893.135 (1)(h)1.b.	1st	Trafficking in gamma-hydroxybutyric acid (GHB), 5 kilograms or more, less than 10 kilograms.
893.135 (1)(j)1.b.	1st	Trafficking in 1,4-Butanediol, 5 kilograms or more, less than 10 kilograms.
893.135 (1)(k)2.b.	1st	Trafficking in Phenethylamines, 200 grams or more, less than 400 grams.
893.1351(3)	1st	Possession of a place used to manufacture controlled substance when minor is present or resides there.
895.03(1)	1st	Use or invest proceeds derived from pattern of racketeering activity.
895.03(2)	1st	Acquire or maintain through racketeering activity any interest in or control of any enterprise or real property.
895.03(3)	1st	Conduct or participate in any enterprise through pattern of racketeering activity.
896.101(5)(b)	2nd	Money laundering, financial transactions totaling or exceeding \$20,000, but less than \$100,000.

896.104(4)(a)2.	2nd	Structuring transactions to evade reporting or registration requirements, financial transactions totaling or exceeding \$20,000 but less than \$100,000.
		(i) LEVEL 9
316.193 (3)(c)3.b.	1st	DUI manslaughter; failing to render aid or give information.
327.35 (3)(c)3.b.	1st	BUI manslaughter; failing to render aid or give information.
409.920 (2)(b)1.c.	1st	Medicaid provider fraud; \$50,000 or more.
499.0051(9)	1st	Knowing sale or purchase of contraband prescription drugs resulting in great bodily harm.
560.123(8)(b)3.	1st	Failure to report currency or payment instruments totaling or exceeding \$100,000 by money transmitter.
560.125(5)(c)	1st	Money transmitter business by unauthorized person, currency, or payment instruments totaling or exceeding \$100,000.
655.50(10)(b)3.	1st	Failure to report financial transactions totaling or exceeding \$100,000 by financial institution.
775.0844	1st	Aggravated white collar crime.
782.04(1)	1st	Attempt, conspire, or solicit to commit premeditated murder.
782.04(3)	1st,PBL	Accomplice to murder in connection with arson, sexual battery, robbery, burglary, aggravated fleeing or eluding with serious bodily injury or death, and other specified felonies.
782.051(1)	1st	Attempted felony murder while perpetrating or attempting to perpetrate a felony enumerated in s. 782.04(3).
782.07(2)	1st	Aggravated manslaughter of an elderly person or disabled adult.
787.01(1)(a)1.	1st,PBL	Kidnapping; hold for ransom or reward or as a shield or hostage.
787.01(1)(a)2.	1st,PBL	Kidnapping with intent to commit or facilitate commission of any felony.
787.01(1)(a)4.	1st,PBL	Kidnapping with intent to interfere with performance of any governmental or political function.
787.02(3)(a)	1st,PBL	False imprisonment; child under age 13; perpetrator also commits aggravated child abuse, sexual battery, or lewd or lascivious battery, molestation, conduct, or exhibition.
787.06(3)(c)1.	1st	Human trafficking for labor and services of an unauthorized alien child.
787.06(3)(d)	1st	Human trafficking using coercion for commercial sexual activity of an unauthorized adult alien.
787.06(3)(f)1.	1st,PBL	Human trafficking for commercial sexual activity by the transfer or transport of any child from outside Florida to within the state.
790.161	1st	Attempted capital destructive device offense.
790.166(2)	1st,PBL	Possessing, selling, using, or attempting to use a weapon of mass destruction.
794.011(2)	1st	Attempted sexual battery; victim less than 12 years of age.
794.011(2)	Life	Sexual battery; offender younger than 18 years and commits sexual battery on a person less than 12 years.

794.011(4)(a)	1st,PBL	Sexual battery, certain circumstances; victim 12 years of age or older but younger than 18 years; offender 18 years or older.
794.011(4)(b)	1st	Sexual battery, certain circumstances; victim and offender 18 years of age or older.
794.011(4)(c)	1st	Sexual battery, certain circumstances; victim 12 years of age or older; offender younger than 18 years.
794.011(4)(d)	1st,PBL	Sexual battery, certain circumstances; victim 12 years of age or older; prior conviction for specified sex offenses.
794.011(8)(b)	1st,PBL	Sexual battery; engage in sexual conduct with minor 12 to 18 years by person in familial or custodial authority.
794.08(2)	1st	Female genital mutilation; victim younger than 18 years of age.
800.04(5)(b)	Life	Lewd or lascivious molestation; victim less than 12 years; offender 18 years or older.
812.13(2)(a)	1st,PBL	Robbery with firearm or other deadly weapon.
812.133(2)(a)	1st,PBL	Carjacking; firearm or other deadly weapon.
812.135(2)(b)	1st	Home-invasion robbery with weapon.
817.535(3)(b)	1st	Filing false lien or other unauthorized document; second or subsequent offense; property owner is a public officer or employee.
817.535(4)(a)2.	1st	Filing false claim or other unauthorized document; defendant is incarcerated or under supervision.
817.535(5)(b)	1st	Filing false lien or other unauthorized document; second or subsequent offense; owner of the property incurs financial loss as a result of the false instrument.
817.568(7)	2nd, PBL	Fraudulent use of personal identification information of an individual under the age of 18 by his or her parent, legal guardian, or person exercising custodial authority.
827.03(2)(a)	1st	Aggravated child abuse.
847.0145(1)	1st	Selling, or otherwise transferring custody or control, of a minor.
847.0145(2)	1st	Purchasing, or otherwise obtaining custody or control, of a minor.
859.01	1st	Poisoning or introducing bacteria, radioactive materials, viruses, or chemical compounds into food, drink, medicine, or water with intent to kill or injure another person.
893.135	1st	Attempted capital trafficking offense.
893.135(1)(a)3.	1st	Trafficking in cannabis, more than 10,000 lbs.
893.135 (1)(b)1.c.	1st	Trafficking in cocaine, more than 400 grams, less than 150 kilograms.
893.135 (1)(c)1.c.	1st	Trafficking in illegal drugs, more than 28 grams, less than 30 kilograms.
893.135 (1)(c)2.d.	1st	Trafficking in hydrocodone, 200 grams or more, less than 30 kilograms.
893.135 (1)(c)3.d.	1st	Trafficking in oxycodone, 100 grams or more, less than 30 kilograms.
893.135 (1)(d)1.c.	1st	Trafficking in phencyclidine, more than 400 grams.
893.135 (1)(e)1.c.	1st	Trafficking in methaqualone, more than 25 kilograms.

893.135 (1)(f)1.c.	1st	Trafficking in amphetamine, more than 200 grams.
893.135 (1)(h)1.c.	1st	Trafficking in gamma-hydroxybutyric acid (GHB), 10 kilograms or more.
893.135 (1)(j)1.c.	1st	Trafficking in 1,4-Butanediol, 10 kilograms or more.
893.135 (1)(k)2.c.	1st	Trafficking in Phenethylamines, 400 grams or more.
896.101(5)(c)	1st	Money laundering, financial instruments totaling or exceeding \$100,000.
896.104(4)(a)3.	1st	Structuring transactions to evade reporting or registration requirements, financial transactions totaling or exceeding \$100,000.
		(j) LEVEL 10
499.0051(10)	1st	Knowing sale or purchase of contraband prescription drugs resulting in death.
782.04(2)	1st,PBL	Unlawful killing of human; act is homicide, unpremeditated.
782.07(3)	1st	Aggravated manslaughter of a child.
787.01(1)(a)3.	1st,PBL	Kidnapping; inflict bodily harm upon or terrorize victim.
787.01(3)(a)	Life	Kidnapping; child under age 13, perpetrator also commits aggravated child abuse, sexual battery, or lewd or lascivious battery, molestation, conduct, or exhibition.
787.06(3)(g)	Life	Human trafficking for commercial sexual activity of a child under the age of 18 or mentally defective or incapacitated person.
787.06(4)(a)	Life	Selling or buying of minors into human trafficking.
794.011(3)	Life	Sexual battery; victim 12 years or older, offender uses or threatens to use deadly weapon or physical force to cause serious injury.
812.135(2)(a)	1st,PBL	Home-invasion robbery with firearm or other deadly weapon.
876.32	1st	Treason against the state.

Rule 3.992(a) Criminal Punishment Code Scoresheet

The Criminal Punishment Code Scoresheet Preparation Manual is available at: http://www.dc.state.fl.us/pub/sen_cpcm/index.html

1. DATE OF SENTENCE	2. PREPARER'S NAME	3. COUNTY	4. SENTENCING JUDGE	
5. NAME (LAST, FIRST, MI.L.)	6. DOB	8. RACE <input type="checkbox"/> B <input type="checkbox"/> W <input type="checkbox"/> OTHER		10. PRIMARY OFF. DATE
	7. DC #	9. GENDER <input type="checkbox"/> M <input type="checkbox"/> F		11. PRIMARY DOCKET #
12. PLEA <input type="checkbox"/>				
TRIAL <input type="checkbox"/>				

I. PRIMARY OFFENSE: If Qualifier, please check ___A ___S ___C ___R (A=Attempt, S=Solicitation, C=Conspiracy, R=Reclassification)

FELONY DEGREE	F.S.#	DESCRIPTION	OFFENSE LEVEL	POINTS
---------------	-------	-------------	---------------	--------

_____/_____/_____/_____/_____

(Level - Points: 1=4, 2=10, 3=16, 4=22, 5=28, 6=36, 7=56, 8=74, 9=92, 10=116)

Prior capital felony triples Primary Offense points **I.** _____

II. ADDITIONAL OFFENSE(S): Supplemental page attached

DOCKET#	FEL/MM DEGREE	F.S.#	OFFENSE LEVEL	QUALIFY A S C R	COUNTS	POINTS	TOTAL
---------	---------------	-------	---------------	-----------------	--------	--------	-------

_____/_____/_____/_____/_____	<input type="checkbox"/>	<input type="checkbox"/>	<input type="checkbox"/>	<input type="checkbox"/>	_____ x _____ = _____		
DESCRIPTION _____							
_____/_____/_____/_____/_____	<input type="checkbox"/>	<input type="checkbox"/>	<input type="checkbox"/>	<input type="checkbox"/>	_____ x _____ = _____		
DESCRIPTION _____							
_____/_____/_____/_____/_____	<input type="checkbox"/>	<input type="checkbox"/>	<input type="checkbox"/>	<input type="checkbox"/>	_____ x _____ = _____		
DESCRIPTION _____							

(Level - Points: M=0.2, 1=0.7, 2=1.2, 3=2.4, 4=3.6, 5=5.4, 6=18, 7=28, 8=37, 9=46, 10=58)

Prior capital felony triples Additional Offense points **II.** Supplemental page points _____

III. VICTIM INJURY:

	Number	Total		Number	Total
2nd Degree Murder	240 x _____	= _____	Slight	4 x _____	= _____
Death	120 x _____	= _____	Sex Penetration	80 x _____	= _____
Severe	40 x _____	= _____	Sex Contact	40 x _____	= _____
Moderate	18 x _____	= _____			

III. _____

IV. PRIOR RECORD: Supplemental page attached

FEL/MM DEGREE	F.S.#	OFFENSE LEVEL	QUALIFY: A S C R	DESCRIPTION	NUMBER	POINTS	TOTAL
_____/_____/_____/_____/_____			<input type="checkbox"/>	<input type="checkbox"/>	<input type="checkbox"/>	<input type="checkbox"/>	_____ X _____ = _____
_____/_____/_____/_____/_____			<input type="checkbox"/>	<input type="checkbox"/>	<input type="checkbox"/>	<input type="checkbox"/>	_____ X _____ = _____
_____/_____/_____/_____/_____			<input type="checkbox"/>	<input type="checkbox"/>	<input type="checkbox"/>	<input type="checkbox"/>	_____ X _____ = _____
_____/_____/_____/_____/_____			<input type="checkbox"/>	<input type="checkbox"/>	<input type="checkbox"/>	<input type="checkbox"/>	_____ X _____ = _____
_____/_____/_____/_____/_____			<input type="checkbox"/>	<input type="checkbox"/>	<input type="checkbox"/>	<input type="checkbox"/>	_____ X _____ = _____
_____/_____/_____/_____/_____			<input type="checkbox"/>	<input type="checkbox"/>	<input type="checkbox"/>	<input type="checkbox"/>	_____ X _____ = _____
_____/_____/_____/_____/_____			<input type="checkbox"/>	<input type="checkbox"/>	<input type="checkbox"/>	<input type="checkbox"/>	_____ X _____ = _____
_____/_____/_____/_____/_____			<input type="checkbox"/>	<input type="checkbox"/>	<input type="checkbox"/>	<input type="checkbox"/>	_____ X _____ = _____

(Level = Points: M=0.2, 1=0.5, 2=0.8, 3=1.6, 4=2.4, 5=3.6, 6=9, 7=14, 8=19, 9=23, 10=29)

Supplemental page points _____

IV. _____

Page 1 Subtotal: _____

Effective Date: For offenses committed under the Criminal Punishment Code effective for offenses committee on or after October 1, 1998 and subsequent revisions.

Mitigated Departure Plea Bargain Prison Diversion Program

Other Reason _____

JUDGE'S SIGNATURE	
--------------------------	--

Effective Date: For offenses committed under the Criminal Punishment Code effective for offenses committed on or after October 1, 1998, and subsequent revisions.

RULE 3.992(b) Supplemental Criminal Punishment Code Scoresheet

NAME (LAST, FIRST, MI.)	DOCKET #	DATE OF SENTENCE
-------------------------	----------	------------------

II. ADDITIONAL OFFENSES(S):

DOCKET#	FEL/MM DEGREE	F.S#	OFFENSE LEVEL	QUALIFY A S C R	COUNTS	POINTS	TOTAL
_____ / _____	_____ / _____	_____ / _____	_____	<input type="checkbox"/> <input type="checkbox"/> <input type="checkbox"/> <input type="checkbox"/>	_____ x	_____ =	_____
DESCRIPTION _____							
_____ / _____	_____ / _____	_____ / _____	_____	<input type="checkbox"/> <input type="checkbox"/> <input type="checkbox"/> <input type="checkbox"/>	_____ x	_____ =	_____
DESCRIPTION _____							
_____ / _____	_____ / _____	_____ / _____	_____	<input type="checkbox"/> <input type="checkbox"/> <input type="checkbox"/> <input type="checkbox"/>	_____ x	_____ =	_____
DESCRIPTION _____							
_____ / _____	_____ / _____	_____ / _____	_____	<input type="checkbox"/> <input type="checkbox"/> <input type="checkbox"/> <input type="checkbox"/>	_____ x	_____ =	_____
DESCRIPTION _____							
_____ / _____	_____ / _____	_____ / _____	_____	<input type="checkbox"/> <input type="checkbox"/> <input type="checkbox"/> <input type="checkbox"/>	_____ x	_____ =	_____
DESCRIPTION _____							

(Level - Points: M=0.2, 1=0.7, 2=1.2, 3=2.4, 4=3.6, 5=5.4, 6=18, 7=28, 8=37, 9=46, 10=58)

II. _____

IV. PRIOR RECORD

FEL/MM DEGREE	F.S.#	OFFENSE LEVEL	QUALIFY: A S C R	DESCRIPTION	NUMBER	POINTS	TOTAL
_____	_____ / _____	_____	<input type="checkbox"/> <input type="checkbox"/> <input type="checkbox"/> <input type="checkbox"/>	_____	_____	X _____	= _____
_____	_____ / _____	_____	<input type="checkbox"/> <input type="checkbox"/> <input type="checkbox"/> <input type="checkbox"/>	_____	_____	X _____	= _____
_____	_____ / _____	_____	<input type="checkbox"/> <input type="checkbox"/> <input type="checkbox"/> <input type="checkbox"/>	_____	_____	X _____	= _____
_____	_____ / _____	_____	<input type="checkbox"/> <input type="checkbox"/> <input type="checkbox"/> <input type="checkbox"/>	_____	_____	X _____	= _____
_____	_____ / _____	_____	<input type="checkbox"/> <input type="checkbox"/> <input type="checkbox"/> <input type="checkbox"/>	_____	_____	X _____	= _____
_____	_____ / _____	_____	<input type="checkbox"/> <input type="checkbox"/> <input type="checkbox"/> <input type="checkbox"/>	_____	_____	X _____	= _____

(Level = Points: M=0.2, 1=0.5, 2=0.8, 3=1.6, 4=2.4, 5=3.6, 6=9, 7=14, 8=19, 9=23, 10=29)

IV. _____

REASONS FOR DEPARTURE - MITIGATING CIRCUMSTANCES
(reasons may be checked here or written on the scoresheet)

- Legitimate, uncoerced plea bargain.
- The defendant was an accomplice to the offense and was a relatively minor participant in the criminal conduct.
- The capacity of the defendant to appreciate the criminal nature of the conduct or to conform that conduct to the requirements of law was substantially impaired.
- The defendant requires specialized treatment for a mental disorder that is unrelated to substance abuse or addiction, or for a physical disability, and the defendant is amenable to treatment.
- The need for payment of restitution to the victim outweighs the need for a prison sentence.
- The victim was an initiator, willing participant, aggressor, or provoker of the incident.
- The defendant acted under extreme duress or under the domination of another person.

- Before the identity of the defendant was determined, the victim was substantially compensated.
- The defendant cooperated with the State to resolve the current offense or any other offense.
- The offense was committed in an unsophisticated manner and was an isolated incident for which the defendant has shown remorse.
- At the time of the offense the defendant was too young to appreciate the consequences of the offense.
- The defendant is to be sentenced as a youthful offender.
- The defendant is amenable to the services of a postadjudicatory treatment-based drug court program and is otherwise qualified to participate in the program.
- The defendant was making a good faith effort to obtain or provide medical assistance for an individual experiencing a drug-related overdose.

Pursuant to 921.0026(3) the defendant's substance abuse or addiction does not justify a downward departure from the lowest permissible sentence, except for the provisions of s. 921.0026(2)(m).

Effective Date: For offenses committed under the Criminal Punishment Code effective for offenses committed on or after October 1, 1998 and subsequent revisions.

For additional copies or more information contact:

Research Manager
Bureau of Research and Data Analysis
Florida Department of Corrections
501 South Calhoun Street
Tallahassee, FL 32399
850-717-3647
dcresearch@mail.dc.state.fl.us