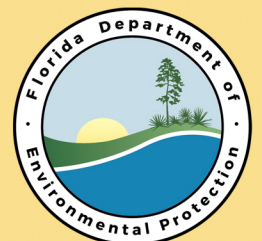


# FLORIDA BROWNFIELDS REDEVELOPMENT PROGRAM

ANNUAL REPORT  
August 2016



Country Club Corners and The Greens at Country Club  
DeLand, Florida



**On the cover:**

The Country Club Corners and The Greens at Country Club Brownfield Site began with the cleanup and redevelopment of the former DeLand Country Club in DeLand, Florida. The approximately 105-acre site was abandoned after the golf course closed in 2012. Soil and groundwater contamination found at the site was attributed to historic turf management operations on the property.

TKG DeLand, LLC purchased the property and entered the Florida Brownfields Redevelopment Program in 2013 along with its redevelopment affiliate Tailwinds DeLand CC, LLC. The BSRA was signed December 23, 2013. Assessment and cleanup was completed in less than two years and DEP issued a Site Rehabilitation Completion Order on November 6, 2015.

TKG and Tailwinds have redeveloped the site into a mixed use project featuring a Publix anchored shopping center, a 155 single-family-home community (now known as Bentley Greens), a proposed office and assisted living facility, and open space. The total capital investment in the project to date has exceeded \$25 million and the project has already resulted in the creation of more than 100 new jobs.

---

## Table of Contents

	<u>Page</u>
<b>Executive Summary</b>	2
<b>Introduction and History</b>	4
<b>Brownfields Redevelopment Program Status</b>	5
Florida Designated Brownfield Areas	5
Brownfield Site Rehabilitation Agreements	6
Site Rehabilitation Completion Orders Issued	6
Status of State Financial Incentives	7
Brownfield Success Stories	9
Local Pollution Control Program Delegations	9
EPA Memorandum of Agreement	9
Public Outreach and Education	10
Annual Florida Brownfields Conference	10
<b>Federal Brownfields Update</b>	11
Small Business Liability Relief and Brownfields Revitalization Act of 2002	11
<b>Additional Information and Contacts</b>	13
<b>Appendices</b>	
Appendix A - Designated Brownfield Areas	
Appendix B - Sites with Executed Brownfield Site Rehabilitation Agreements	
Appendix C - Brownfield Success Stories	

**EXECUTIVE SUMMARY**

A brownfield site is real property, the expansion, redevelopment or reuse of which may be complicated by actual or perceived environmental contamination. The Florida Department of Environmental Protection’s (DEP) Brownfields Redevelopment Program (Program), established in 1997, empowers communities, local governments and other stakeholders to work together to assess, clean up and reuse brownfields.

The two primary goals of the Program are contaminated site cleanup and economic redevelopment. Since inception of the Program in 1997, 89 contaminated sites have been cleaned up, more than 65,000 confirmed and projected direct and indirect jobs have been created and \$2.7 billion in capital investment is projected in designated brownfield areas.

<b>BROWNFIELDS HIGHLIGHTS</b>	
<b>Brownfield Area Designations</b>	
Calendar Year 2015	17
Calendar Year 2016 (to date)	8
<b>Brownfield Site Rehabilitation Agreements</b>	
Calendar Year 2015	27
Calendar Year 2016 (to date)	5
<b>Site Rehabilitation Completion Orders</b>	
Calendar Year 2015	10
Calendar Year 2016 (to date)	2
<b>Voluntary Cleanup Tax Credits for Brownfield Sites</b>	
Calendar Year 2015	\$10,374,782
<b>Projected Capital Investment</b>	
Calendar Year 2015	\$28,441,850
Calendar Year 2016 (to date)	\$47,559,325
<b>Projected New Direct and Indirect Jobs</b>	
Calendar Year 2015	1,272
Calendar Year 2016 (to date)	1,631

The number of brownfield area designations increased slightly in 2015, when compared to 2014. The number of brownfield area designations to date in 2016 suggests that we will end the year with about the same number as in 2015. However, active participation in the program, as reflected in Brownfield Site Rehabilitation Agreement (BSRA) execution, was the strongest year since the inception of the program.

Highlights and milestones for calendar year 2015 and calendar year 2016 to date include:

- ◆ **Brownfield Areas:** Twenty-one municipalities and county governments approved local resolutions that designated 17 additional brownfield areas in 2015 and eight additional brownfield areas in the first six months of 2016. The total number of brownfield areas in Florida has increased to 404.
- ◆ **Brownfield Site Rehabilitation Agreements:** Twenty-seven BSRAs were executed in 2015. Five BSRAs have been executed in the first half of 2016. This brings the Program total to 261.
- ◆ **Site Rehabilitation Completion Orders:** Ten site rehabilitation completion orders (SRCO) were issued in 2015 and two SRCOs have been issued for the first six months of 2016. The SRCOs were issued for sites that completed cleanup of property to standards protective of human health and the environment. The issuance of these SRCOs brings the total number of SRCOs issued to 89 since inception of the Program in 1997.



- ◆ **Voluntary Cleanup Tax Credits (VCTC):** In 2016, DEP received 99 tax credit applications and approved more than \$10.3 million in tax credits for site rehabilitation work completed at brownfield sites in 2015. Each year since 2007, approved tax credits have exceeded the annual authorization provided by the Florida Legislature. Effective July 1, 2015, the Legislature approved a one-time VCTC authorization of \$21.6 million. This authorization was effective through June 30, 2016. On July 1, 2016, the annual VCTC authorization returned to \$5 million per year. The 2015 one-time additional authorization allowed DEP to issue certificates for all approved tax credits, including those that had been carried over from previous years. However, because the total eligible requests received for 2015 expenditures exceeds the current authorization of \$5 million, some of the tax credit recipients will not receive their certificates until 2018.
  
- ◆ **New Jobs:** From January 2015 through December 2015, 258 projected new direct jobs, 1,014 projected new indirect jobs and more than \$28 million in projected new capital investment were attributable to the Program. To date in calendar year 2016, 369 projected new direct jobs, 1,262 projected new indirect jobs and \$47.5 million in projected new capital investment are attributable to the Program. Since 1997, more than \$256 million in confirmed investment and 11,884 confirmed net new direct jobs can be attributed to the Program.<sup>1</sup>
  
- ◆ **Florida Brownfields Conference:** The 18<sup>th</sup> Annual Brownfields Conference was held in Tampa in October 2015. With the theme “From Blight to Right – Brownfields Transformation,” approximately 200 people attended this informative conference. Participation at this conference remained strong with attendees representing lenders, real estate professionals, community advocacy groups, environmental consultants, attorneys and federal, state and local governments. The conference is a successful venue to facilitate redevelopment of properties affected by environmental contamination.

---

<sup>1</sup> Data provided by the Florida Department of Economic Opportunity, Division of Strategic Business Development, July 2016.

## INTRODUCTION AND HISTORY

Many areas in Florida contain sites with actual or perceived environmental contamination that may present a significant barrier to redevelopment. The Florida Brownfields Redevelopment Act (Act), sections 376.77 - 376.86, Florida Statutes, was adopted by the Florida Legislature in 1997 to provide incentives for local governments and individuals to voluntarily clean up and redevelop brownfield sites. Participation in the Program results in environmental cleanup, protection of public health, reuse of infrastructure and job creation.

<p><b>Florida Brownfields Redevelopment Program Objectives</b></p> <ul style="list-style-type: none"> <li>◆ Site rehabilitation</li> <li>◆ Job creation</li> <li>◆ Increased capital investment</li> <li>◆ Broadened tax base by raising property values</li> <li>◆ Better utilization of existing infrastructure and community resources</li> <li>◆ Improvements in quality of life and the environment</li> </ul>
---

Local governments play a key role in the Program. Financial and regulatory incentives become available when a local government designates a brownfield area by resolution. These financial and regulatory incentives enable local governments and state agencies to partner with the private sector to rehabilitate contaminated properties, create jobs and promote sustainable reuse of properties within designated brownfield areas.

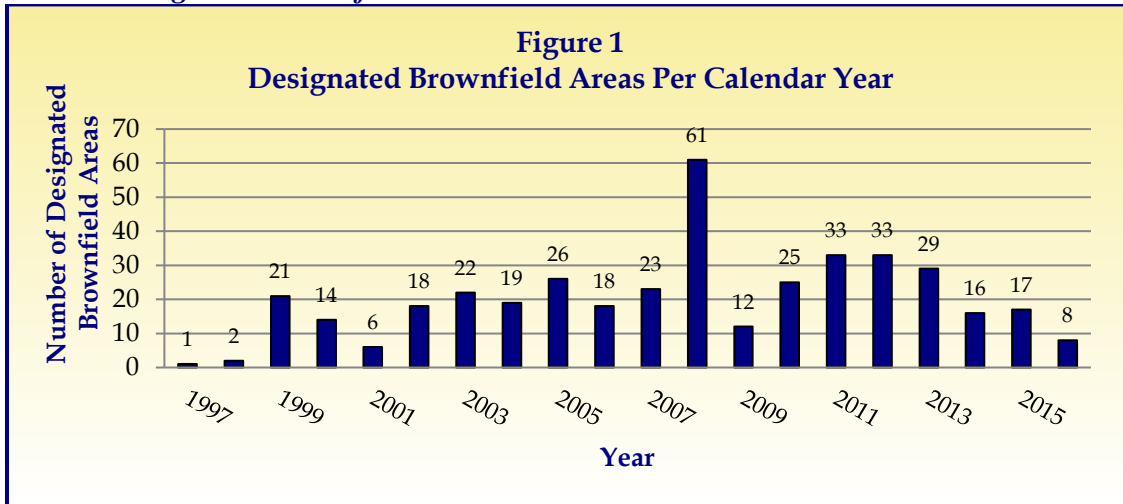
- A **brownfield area** is defined by statute as “...a contiguous area of one or more brownfield sites, some of which may not be contaminated, and which has been designated by a local government by resolution.”
- A **brownfield site** is defined by statute as “...real property, the expansion, redevelopment, or reuse of which may be complicated by actual or perceived environmental contamination.”

Since passage of the Act, DEP has provided education and outreach to a variety of interest groups, including communities, environmental consultants, lenders, local governments, economic redevelopment boards and real estate professionals. DEP has also provided technical assistance and streamlined regulatory service to Program participants.

Data presented in this report was collected through the end of the state fiscal year on June 30, 2016. Because most of the data for brownfields and brownfields-related programs, (i.e., voluntary cleanup tax credits and the brownfields redevelopment bonus) is collected on a calendar year basis, the information is presented for calendar year 2015 and for calendar year 2016 to date (i.e., through June 30, 2016).

## BROWNFIELDS REDEVELOPMENT PROGRAM STATUS

### Florida Designated Brownfield Areas



Note: Data for 2016 is January 1, 2016, through June 30, 2016.

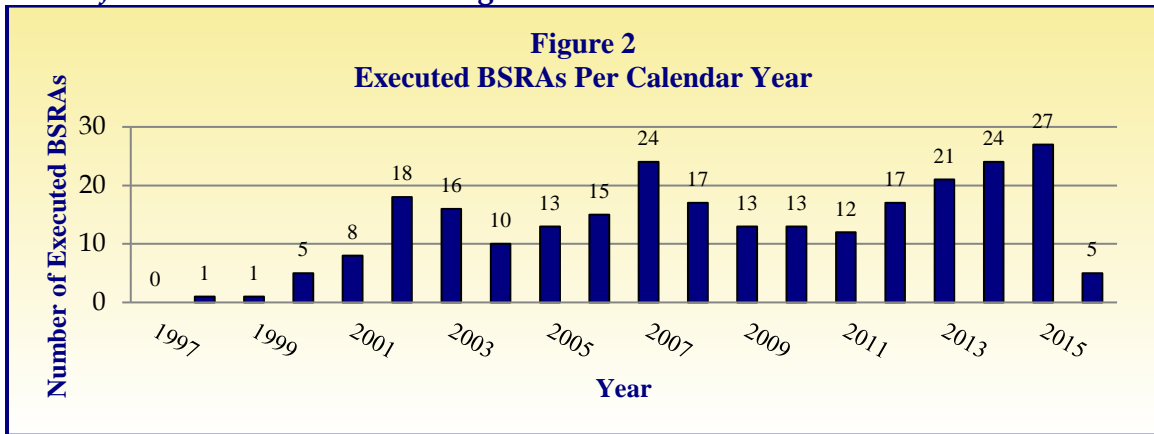
Local governments continue to support the use of the tools and incentives provided by the Program by designating brownfield areas for cleanup and revitalization. Upon designation, properties within a brownfield area have met the first requirement for participation in the Program. These properties may participate in stand-alone economic incentives such as the loan guaranty program or participate in other economic incentives that are linked to a BSRA, including the job bonus refund or sales and use tax exemption for building materials used in a mixed-use project or housing project.<sup>2</sup> If contamination is known or suspected, the local government may designate an area and identify the person responsible for brownfield site rehabilitation. This entitles the identified person to negotiate a BSRA with DEP.

In 2015, 16 local governments reported approval of resolutions designating 17 brownfield areas. During the first half of 2016, six local governments have designated eight brownfield areas. Through this reporting period, Florida now has 404 designated brownfield areas in 136 communities across the state (Figure 1). Over the history of the Program, an average of approximately 20 brownfield areas have been designated each year. While designations in 2015 and the first half of 2016 are below this average, as shown in the next section, BSRA activity is strong.

The 404 locally designated areas encompass approximately 266,133 acres of both contaminated and uncontaminated properties, including residential and viable business properties. Appendix A provides the name, location and approximate size of each brownfield area in the state.

<sup>2</sup>Florida Department of Revenue Tax Tip Sheet TIP # 00A01-23, issued August 11, 2000, at <http://dor.myflorida.com/dor/tips/tip13a01-10.html>

**Brownfield Site Rehabilitation Agreements**

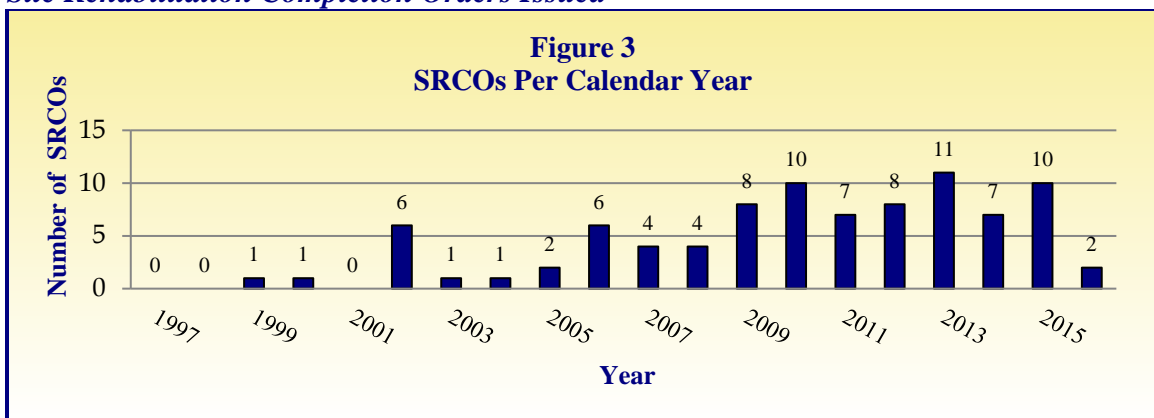


Note: Data for 2016 is January 1, 2016, through June 30, 2016. Historically, the majority of BSRA's are executed during the final quarter of each calendar year.

Once a local government designates a brownfield area and a person responsible for brownfield site rehabilitation is identified, this entity may voluntarily execute a BSRA with DEP. The BSRA provides DEP and the public assurance that site rehabilitation will be conducted in accordance with Florida Statutes and DEP’s Contaminated Site Cleanup Criteria rule.<sup>3</sup> In addition, the BSRA provides limited liability protection for the voluntary responsible party. The BSRA contains various commitments by the voluntary responsible party, including milestones for completion of site rehabilitation tasks and submittal of technical reports and plans. It also contains a commitment by DEP to review technical reports according to an agreed upon schedule. Only those brownfield sites with an executed BSRA are eligible to apply for a voluntary cleanup tax credit incentive pursuant to section 376.30781, Florida Statutes.

Through June 30, 2016, voluntary responsible parties have executed 261 agreements with DEP or our delegated counties, since inception of the Program in 1997. Twenty-seven agreements were executed in 2015 and five agreements have been executed through the first half of 2016 (Figure 2).

**Site Rehabilitation Completion Orders Issued**



Note: Data for 2016 is January 1, 2016, through June 30, 2016.

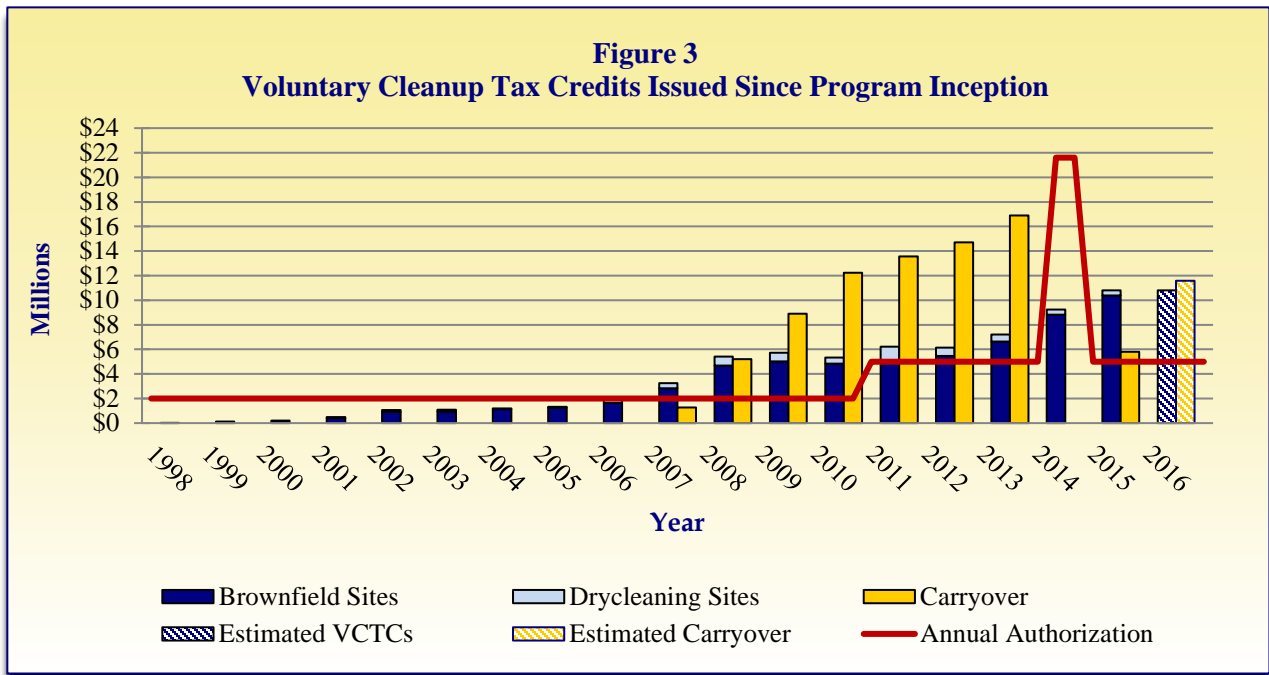
<sup>3</sup> Chapter 62-780, Florida Administrative Code



In 2015, -10 SRCOs, confirming that no further action is required, were issued for brownfield sites. During the first half of 2016, two SRCOs have been issued, bringing the total issued since 1997 to 89 (Figure 3). Other sites with executed agreements continue to make progress on site rehabilitation and redevelopment.

Appendix B provides the name, location and approximate size of each brownfield site in the state with an executed BSRA. The table includes a completion date for sites that have received a SRCO or a SRCO with conditions. A SRCO with conditions is issued when DEP has approved alternate cleanup target levels for a site because the voluntary responsible party has agreed to use engineering and institutional controls to eliminate exposure to contaminants.

**Status of State Financial Incentives**



**Note:** Effective July 1, 2011, the annual authorization was increased from \$2 million to \$5 million. Effective July 1, 2015, the annual authorization was increased to \$21.6 million for one year. This amount satisfied all approved VCTCs (that is the backlog, as well as, the VCTC applications that were approved for 2014 expenditures). After these VCTCs were awarded, the \$21.6 million authorization was exhausted. On July 1, 2016, the annual VCTC authorization returned to \$5 million per year.

In 1998, the Florida Legislature established the VCTC Program to provide an incentive for the voluntary cleanup of drycleaning solvent-contaminated sites and brownfield sites in designated brownfield areas (section 376.30781, Florida Statutes). At these sites, a tax credit of 50 percent is allowed for the cost of voluntary cleanup activity that is integral to site rehabilitation, with a maximum of \$500,000 per site per year. Additionally, at brownfield sites in designated brownfield areas, a one-time 50 percent tax credit is allowed for solid waste removal, with a maximum of \$500,000 per site. Tax credits may be applied to state corporate income tax. Effective July 1, 2011, the Legislature increased the annual tax credit authorization from \$2 million to \$5 million. The VCTC Program has approved \$66,875,735 in tax credits since it began.

Effective July 1, 2015, the Legislature approved a one-time VCTC authorization of \$21.6 million. This authorization was only effective through June 30, 2016. On July 1, 2016, the annual VCTC authorization returned to \$5 million per year. The additional authorization allowed DEP to issue certificates for all approved tax credits, including those that had been carried over from previous years.

In July 2015, DEP issued 212 tax credit certificates, exhausting the one-time, \$21.6 million authorization. In January 2016, DEP received 99 VCTC applications for 2015 calendar year expenses and approved \$10,795,616 in tax credits. Of this total, \$10,374,782 – approximately 96 percent – was for 84 brownfield sites. VCTC applications for site rehabilitation conducted during 2016 are expected to be submitted in approximately the same amounts as for 2015.

The Brownfields and VCTC Programs have been successful in promoting the cleanup and redevelopment of contaminated, underutilized properties. The one-time increase in the annual authorized VCTC funding level addressed all approved tax credits through June 30, 2015. However, as shown in Figure 4, since 2007, the approved tax credits have exceeded the available authorization, and since 2012, the approved tax credits have averaged more than \$8.3 million per year. If the dollar amount of future tax credit applications remains consistent with the previous five years, the backlog for un-issued tax credits will continue to grow. With the \$5 million authorization available July 1, DEP will issue tax credit certificates to 33 of the 99 applicants for 2015 expenditures. Sixty-four applicants will receive their tax credits in July 2017 and nine applicants will receive their tax credits in July 2018.

The Act also provides other financial and economic incentives administered by the Florida Department of Economic Opportunity (DEO), which include the Brownfields Redevelopment Bonus Refund<sup>4</sup> and a limited state loan guaranty. For the Brownfields Redevelopment Bonus Refund, DEO enters into incentive agreements with eligible entities that plan to create new jobs in Florida brownfield areas. As a result of the passage of Senate Bill 406 (Chapter No. 2013-42, Laws of Florida), effective July 1, 2013, to be eligible to participate in the job bonus refund, an entity must be creating jobs on a property that is subject to a BSRA or on a property that abuts a property that is subject to a BSRA. The term of an incentive agreement is typically four or five years with job creation milestones in each year of the agreement. A Brownfields Redevelopment Bonus Refund is issued only if the agreed upon milestones are achieved.

For this report, DEO has provided projections for job creation and capital investment associated with current agreements. In addition, DEO has provided confirmed data for job creation and capital investment in brownfield areas since the inception of the Program (Table 1).

---

<sup>4</sup> Pre-approved applicants for the Brownfields Redevelopment Bonus Refund may receive a tax refund of up to \$2,500 for each new job created.

<b>Table 1</b>					
<b>Brownfields Redevelopment Bonus Refund</b>					
<b>Period</b>	<b>New Direct Jobs Projected</b>	<b>Indirect Jobs Projected</b>	<b>Investment Projected</b>	<b>Confirmed Net New Direct Jobs</b>	<b>Investment Confirmed to Date</b>
January 1, 2015 - December 31, 2015	258	1,014	\$28,441,850		
January 1, 2016 - June 30, 2016	369	1,262	\$47,559,325		
1997 - June 30, 2016	21,029	33,129	\$2,822,876,573		
1997 - December 31, 2014**				11,884	\$256,313,328

\*\*Applicants for job bonus refund submit their requests in the January following the year the jobs were created. Applications for 2015 jobs were received in January 2016 and are currently being evaluated and confirmed. Therefore, the most recent confirmed jobs data is for the period ending December 31, 2014.

The Brownfields Area Loan Guaranty Council, established in section 376.86, Florida Statutes, has approved two loan guarantees since inception of the Program. Pursuant to section 376.86, Florida Statutes, the state may have up to \$5 million of loan guarantees in place at a time. The full \$5 million became available for other guarantees on July 1, 2012, and is currently available.

***Brownfield Success Stories***

The success of the Program is best demonstrated by the completed projects. Appendix C provides summaries of each project that has entered into a BSRA, completed all cleanup and achieved no further action status in the last year. Projects that achieved no further action status before July 1, 2015, are listed in the table provided in Appendix C. Full summaries for these projects can be found at:

[http://www.dep.state.fl.us/waste/quick\\_topics/publications/wc/brownfields/AnnualReport/2016/Success-Stories-2016.pdf](http://www.dep.state.fl.us/waste/quick_topics/publications/wc/brownfields/AnnualReport/2016/Success-Stories-2016.pdf).

All of the projects have completed cleanup in accordance with DEP’s Contaminated Site Cleanup Criteria rule and most have been redeveloped.

***Local Pollution Control Program Delegations***

Three county governments – Broward, Hillsborough and Miami-Dade – have received delegation from DEP to administer the Program locally. The original delegation agreements for Broward and Miami-Dade counties were signed in 2000, and the agreement with Hillsborough County was signed in 2004. The Broward County delegation agreement was renewed in May 2010 and the Miami-Dade County delegation agreement was renewed in October 2010. The Hillsborough County delegation agreement was renewed in March 2012.

***U.S. Environmental Protection Agency Memorandum of Agreement***

The current Memorandum of Agreement (MOA) between DEP and EPA specifies the criteria under which EPA will forego its oversight of cleanups in Florida. Through the MOA, certain sites subject to corrective action under federal Comprehensive Environmental Response Compensation and Liability Act (CERCLA) and Resource Conservation and Recovery Act (RCRA) authority are eligible for state brownfields incentives.

Additionally, to be eligible to receive CERCLA Section 128(a) grant funding authorized by the federal Small Business Liability Relief and Brownfields Revitalization Act of 2002, a state must be a party to a voluntary response program MOA with EPA or demonstrate that its

response program includes, or is taking steps to include, the elements of a response program. Florida is one of 25 states with an existing MOA, making the Program automatically eligible for Section 128(a) funding. In 2015, DEP received \$653,608 in grant funding from EPA (see additional grant information on pages 11 and 12).

### ***Public Outreach and Education***

As an ongoing responsibility of the Program, DEP staff participates in frequent outreach and educational speaking engagements with various city and county organizations, trade shows and industry groups.

DEP's Brownfields website, [www.dep.state.fl.us/waste/categories/brownfields](http://www.dep.state.fl.us/waste/categories/brownfields), provides the latest Program-specific information and links to websites for DEO, Enterprise Florida, local governments, U.S. Department of Housing and Urban Development, EPA's Brownfields Program and other federal agencies involved in partnering for the redevelopment of brownfields. The site also contains map images of all designated brownfield areas and copies of local government resolutions and executed cleanup agreements. Brownfields can also be located using DEP's [Contamination Locator Map \(CLM\)](#) website. This tool allows users to locate all sites that are currently under DEP's cleanup oversight and to subscribe to an online service that provides users updates on cleanup milestones.

### ***Annual Florida Brownfields Conference***

The 18<sup>th</sup> Annual Florida Brownfields Conference was held in Tampa in October 2015. With the theme "*From Blight to Right – Brownfields Transformation*," approximately 200 people attended this informative conference. Participation at this conference remained strong with attendees representing lenders, real estate professionals, community advocacy groups, environmental consultants, attorneys, and federal, state and local governments. The conference is a successful venue to facilitate redevelopment of properties affected by environmental contamination.

The City of Tampa and the Florida Brownfields Association cooperated in organizing this successful conference with support from Enterprise Florida, DEO, EPA, and DEP. Numerous environmental consulting firms, vendors and law firms provided funds for sponsorship, coordination efforts, speakers and exhibits. DEP staff participated in the conference by making presentations and participating in discussion panels and ad hoc meetings regarding ongoing brownfield projects. The success of the Program is due in part to the many partnerships built between private and public entities at the annual conference.

---

## FEDERAL BROWNFIELDS UPDATE

### *Small Business Liability Relief and Brownfields Revitalization Act of 2002*

Policies that EPA developed over recent years were incorporated into law through passage of the Small Business Liability Relief and Brownfields Revitalization Act. The brownfields law expanded EPA's assistance to the public and private sectors by providing new tools for promoting sustainable cleanup and reuse.

Brownfields grants continue to serve as the foundation of EPA's Brownfields Program. These grants support revitalization efforts by providing seed money for environmental assessment, cleanup and job training:

- ◆ Assessment Grants provide funding for brownfield inventories, planning, environmental assessments and community outreach. Grant amount - up to \$200,000.
- ◆ Revolving Loan Fund Grants provide funding to capitalize loans that are used to clean up brownfield sites. Grant amount - up to \$1 million.
- ◆ Job Training Grants provide environmental job training for residents of brownfield communities. Grant amount - up to \$200,000.
- ◆ Cleanup Grants provide direct funding for cleanup activities at certain properties with planned green space, recreational or other nonprofit uses. Grant amount - up to \$200,000.
- ◆ Coalition Grants provide an opportunity for a minimum of three eligible applicants to form a coalition to conduct brownfields assessment. Grant amount – up to \$1 million.

In May 2016, Brownfield Competitive Grants were awarded to eligible Florida recipients. Florida grant recipients received \$1,600,000:

- ◆ Town of Century
  - \$200,000 Hazardous Site Assessment
  - \$200,000 Petroleum Site Assessment
- ◆ City of Ormond Beach
  - \$200,000 Hazardous Site Assessment
  - \$200,000 Petroleum Site Assessment
- ◆ City of St. Petersburg
  - \$200,000 Hazardous Site Assessment
  - \$200,000 Petroleum Site Assessment
- ◆ City of Palmetto
  - \$200,000 Hazardous Site Cleanup
- ◆ City of West Palm Beach
  - \$200,000 Hazardous Site Cleanup

The grants will be used to conduct Phase I and Phase II environmental assessments and cleanup activities at sites with known or suspected hazardous substances or petroleum contamination.

In addition to the grants awarded to the various communities described above, DEP received a State and Tribal Response Program Grant (SRP) under CERCLA 128(a) in the amount of \$653,608 from EPA for the federal fiscal year that began on October 1, 2015. This is the 13<sup>th</sup>



year in which DEP has received an SRP grant, with the amount awarded totaling \$10.1 million. Since inception of the SRP grant and its predecessor program, DEP has assisted 92 applicants with 112 projects on contaminated or potentially contaminated sites. DEP uses the grant to pay for staff and contractors that provide brownfields services at eligible sites for local governments, non-profit organizations and other eligible applicants. These services include site-specific assessment and limited cleanup of source areas.

---

## ADDITIONAL INFORMATION AND CONTACTS

For information on the content of this report or the Program, contact:

Kim Walker, Brownfields Program Manager  
Florida Department of Environmental Protection  
Telephone: (850) 245-8934  
Email: [kim.walker@dep.state.fl.us](mailto:kim.walker@dep.state.fl.us)

For information regarding the Voluntary Cleanup Tax Credit Program, contact:

Scott Sweeney, Voluntary Cleanup Tax Credit Program Manager  
Florida Department of Environmental Protection  
Telephone: (850) 245-8994  
Email: [scott.l.sweeney@dep.state.fl.us](mailto:scott.l.sweeney@dep.state.fl.us)

For information on aspects of the Program related to economic incentives administered by the Florida Department of Economic Opportunity, contact:

Burt Von Hoff  
Division of Strategic Business Development  
Florida Department of Economic Opportunity  
Telephone: (850) 717-8974  
Email: [burt.vonhoff@deo.myflorida.com](mailto:burt.vonhoff@deo.myflorida.com)

For information regarding marketing of the Program and job creation incentives or other economic incentives, contact:

Heather Squires Shubirg  
Manager of Competitive Strategies  
Enterprise Florida, Inc.  
Telephone: (407) 956-5696  
Email: [hsquires@eflorida.com](mailto:hsquires@eflorida.com)

For additional details regarding the Program, visit:  
<http://www.dep.state.fl.us/waste/categories/brownfields>.

**APPENDIX A**  
**Designated Brownfield Areas**

# Brownfield Areas

## Florida Brownfields Redevelopment Program

Thursday, July 07, 2016

4:08:43 PM

**Total Areas: 404**



Area ID	Area Name	City	County	DEP District	Original Resolution Date	Amended Resolution Date	Acreage <sup>1</sup>
BF131602000	Willow Lake Apartments Green Reuse Area	MIAMI	MIAMI-DADE	Southeast	6/8/2016		0.00
BF641601000	Bruner Road Parcel Cleanup Project	PORT ORANGE	VOLUSIA	Central	6/2/2016		17.70
BF291601000	Blue Brandon Palms Green Reuse Area	BRANDON	HILLSBOROUGH	Southwest	5/4/2016		0.00
BF371601000	South Monroe St Corridor Brownfields Area	TALLAHASSEE	LEON	Northwest	4/27/2016		237.50
BF131601000	NW 62nd St Passive Park Green Reuse Area		MIAMI-DADE	Southeast	4/20/2016		5.02
BF481601000	Apopka Community Redevelopment Area	APOPKA	ORANGE	Central	2/17/2016		629.79
BF061602000	Wisdom Village Crossing LP Brownfield Area	POMPANO BEACH	BROWARD	Southeast	2/16/2016		0.00
BF061601000	Former Palm Aire Golf Course Phase 2A Area	POMPANO BEACH	BROWARD	Southeast	2/9/2016		9.99
BF291501000	Former Amazon Hose Property	TAMPA	HILLSBOROUGH	Southwest	12/17/2015		2.28
BF131503000	El Portal NE 83rd St. Green Reuse Area	EL PORTAL	MIAMI-DADE	Southeast	12/15/2015		1.92
BF061503000	Former Palm Aire Golf Course	POMPANO BEACH	BROWARD	Southeast	12/8/2015		26.83
BF481502000	Orlando Economic Enhancement District - T.C. Two Colonial	ORLANDO	ORANGE	Central	12/7/2015		0.57
BF501502000	Delray Beach Brownfield Area	DELRAY BEACH	PALM BEACH	Southeast	12/2/2015		6.75
BF131502000	Doral Legacy Park Green Reuse Area		MIAMI-DADE	Southeast	12/2/2015		19.55
BF481501000	GENE: ROCC (Redeveloping Orange County Communities)	ORLANDO	ORANGE	Central	12/1/2015		46.40
BF161501000	590 Beautyrest Ave.	JACKSONVILLE	DUVAL	Northeast	11/24/2015		4.90
BF061502000	Northwest Gardens V Brownfield Area	FT LAUDERDALE	BROWARD	Southeast	11/17/2015		5.87
BF131501000	Taylor Park Green Reuse Area	NORTH MIAMI BEACH	MIAMI-DADE	Southeast	11/12/2015		21.88
BF331501000	I-10 and SR59 Brownfield Area	LLOYD	JEFFERSON	Northwest	10/20/2015		599.10

Area ID	Area Name	City	County	DEP District	Original Resolution Date	Amended Resolution Date	Acreage <sup>1</sup>
BF591501000	The TKG Oviedo Development Brownfield Area	OVIEDO	SEMINOLE	Central	10/19/2015		10.00
BF061501000	Coral Springs Revitalization Zone	CORAL SPRINGS	BROWARD	Southeast	8/19/2015		6.04
BF521501000	Former Arab Pest Control Brownfield Area	ST PETERSBURG	PINELLAS	Southwest	7/23/2015		0.43
BF641501000	Orange City Brownfield Area	ORANGE CITY	VOLUSIA	Central	5/12/2015		687.00
BF081501000	Verandas at Punta Gorda Brownfield Area	PUNTA GORDA	CHARLOTTE	South	4/1/2015		8.83
BF501501000	Former Servico Landfill Brownfield Area	WEST PALM BEACH	PALM BEACH	Southeast	3/16/2015		8.94
BF291406000	Peoples Gas System - North Channelside Drive	TAMPA	HILLSBOROUGH	Southwest	12/11/2014		7.31
BF291405000	Spruce Street Landiffl #2	TAMPA	HILLSBOROUGH	Southwest	11/20/2014		3.42
BF521401000	Former Countryside Executive Golf Course	CLEARWATER	PINELLAS	Southwest	11/14/2014	12/4/2014	44.28
BF481401000	Orlando Economic Enhancement District - Hoffner Avenue	ORLANDO	ORANGE	Central	10/20/2014		8.21
BF131403000	Rucks Park Site	NORTH MIAMI	MIAMI-DADE	Southeast	9/23/2014		6.64
BF161402000	Gerdau Ameristeel Brownfield Area	JACKSONVILLE	DUVAL	Northeast	9/2/2014		149.28
BF161403000	L&M Griffin Properties #3 Brownfield Area	JACKSONVILLE	DUVAL	Northeast	9/2/2014		3.52
BF131402000	City of Miami Parks	MIAMI	MIAMI-DADE	Southeast	8/26/2014		39.55
BF291403000	Hudson Nursery Brownfield Area	TAMPA	HILLSBOROUGH	Southwest	7/7/2014		10.35
BF291402000	Delaney Creek Brownfield Redevelopment Area		HILLSBOROUGH	Southwest	7/1/2014		36.18
BF291404000	Port Redwing Access Outparcel Brownfield Area	TAMPA	HILLSBOROUGH	Southwest	7/1/2014		31.24
BF131401000	Miami-Dade Regional Soccer Park BF Redevelopment Area	MEDLEY	MIAMI-DADE	Southeast	6/3/2014		47.34
BF161401000	Penman Plaza Brownfield Area	NEPTUNE BEACH	DUVAL	Northeast	4/17/2014		11.00
BF501401000	480 US Highway 27 North	SOUTH BAY	PALM BEACH	Southeast	4/15/2014		0.29
BF291401000	Port Redwing Property	GIBSONTON	HILLSBOROUGH	Southwest	2/11/2014		188.27
BF641401000	City of DeBary Brownfield Area	DEBARY	VOLUSIA	Central	1/15/2014		492.32
BF061302000	Sunrise Wal-Mart	SUNRISE	BROWARD	Southeast	12/10/2013		16.64



Area ID	Area Name	City	County	DEP District	Original Resolution Date	Amended Resolution Date	Acreage <sup>1</sup>
BF351301000	Palm Plaza Brownfield Area	LEESBURG	LAKE	Central	12/9/2013		0.28
BF411301000	The Pumphouse Station Brownfield Area	BRADENTON	MANATEE	Southwest	11/13/2013		6.70
BF521304000	Seminole Mall	SEMINOLE	PINELLAS	Southwest	11/12/2013		39.56
BF291306000	Nebraska Avenue Brownfield Area	TAMPA	HILLSBOROUGH	Southwest	11/7/2013		1.54
BF291305000	Tampa Water Works Park Brownfield Area	TAMPA	HILLSBOROUGH	Southwest	11/7/2013		5.59
BF291304000	Palmetto Tampa-Columbus Area	TAMPA	HILLSBOROUGH	Southwest	10/13/2013		1.70
BF641302000	Local Economic Advancement District 1 (LEAD 1)	DE LEON SPRINGS	VOLUSIA	Central	10/10/2013		92.61
BF641303000	Local Economic Advancement District 2 (LEAD 2)	DE LEON SPRINGS	VOLUSIA	Central	10/10/2013		12.97
BF291303000	Former Redwing Trucking Facility Area	TAMPA	HILLSBOROUGH	Southwest	10/8/2013		31.30
BF291307000	Wal-Mart Tampa (Hillsborough)	TAMPA	HILLSBOROUGH	Southwest	10/3/2013		10.73
BF131303000	South Miami Plaza Perservation Site	SOUTH MIAMI	MIAMI-DADE	Southeast	9/17/2013		2.49
BF641301000	Former DeLand Country Club Economic Enhancement Area	DELAND	VOLUSIA	Central	8/19/2013	12/16/2013	103.38
BF481304000	Orlando Economic Enhancement District-3117 S. Orange	ORLANDO	ORANGE	Central	8/5/2013		0.72
BF481303000	Orlando Economic Enhancement District	ORLANDO	ORANGE	Central	8/5/2013		3.14
BF491301000	West 192 Development Authority Area		OSCEOLA	Central	7/1/2013		14,190.37
BF521303000	Former Jones Chemical Site Brownfield Area	SAINT PETERSBURG	PINELLAS	Southwest	6/20/2013		2.50
BF131304000	27th Avenue Corridor Greenpowerment Zone	NORTH MIAMI	MIAMI-DADE	Southeast	6/12/2013		46.21
BF581301000	Venetian Walk	VENICE	SARASOTA	South	6/11/2013		6.50
BF531301000	Lake Alfred Northeast Economic Enhancement District	LAKE ALFRED	POLK	Southwest	6/3/2013		589.00
BF061301000	5001 North Federal Highway	POMPANO BEACH	BROWARD	Southeast	5/28/2013		8.41
BF521302000	Pinellas Heights Brownfield	LARGO	PINELLAS	Southwest	5/7/2013		8.27
BF291302000	Former Gulf Coast Metals	TAMPA	HILLSBOROUGH	Southwest	5/2/2013		3.24

Area ID	Area Name	City	County	DEP District	Original Resolution Date	Amended Resolution Date	Acreage <sup>1</sup>
BF481301000	Pine Hills ROCC		ORANGE	Central	4/23/2013		287.59
BF481302000	Atlantic Gulf Colonial Brownfield: ROCC		ORANGE	Central	3/12/2013		6.92
BF291301000	Plant City Industrial Park	PLANT CITY	HILLSBOROUGH	Southwest	3/11/2013		1,512.77
BF131302000	Coral Terrace Brownfield Area		MIAMI-DADE	Southeast	3/5/2013		18.00
BF521301000	2677 Roosevelt Boulevard	LARGO	PINELLAS	Southwest	3/5/2013		13.66
BF131301000	Land South Brownfield Area	NORTH MIAMI	MIAMI-DADE	Southeast	1/8/2013		0.26
BF291205000	Lincoln Park Brownfield Area	PLANT CITY	HILLSBOROUGH	Southwest	12/10/2012		37.00
BF131203000	Antigua Redevelopment Site	NORTH MIAMI BEACH	MIAMI-DADE	Southeast	12/4/2012		17.69
BF411201000	Palmetto Economic Enhancement District	PALMETTO	MANATEE	Southwest	12/3/2012		1,091.85
BF531206000	K.C. Industries Properties, LLC Brownfield Area	MULBERRY	POLK	Southwest	11/20/2012		200.00
BF061203000	Bokamper's Sports Bar & Grille Area	FORT LAUDERDALE	BROWARD	Southeast	11/6/2012		1.31
BF051202000	Cape Canaveral Economic Enhancement District (CCEED)	CAPE CANAVERAL	BREVARD	Central	10/16/2012		535.79
BF521203000	Briarwood RV Park Brownfield	LARGO	PINELLAS	Southwest	10/2/2012		13.80
BF641204000	Deltona Boulevard Economic Development Zone	DELTONA	VOLUSIA	Central	9/17/2012		36.33
BF131201000	Homestead Wal-Mart	HOMESTEAD	MIAMI-DADE	Southeast	8/22/2012		5.80
BF521202000	Ulmerton Road Opportunity Corridor (UROC) Area-wide Brownfield		PINELLAS	Southwest	8/7/2012	7/9/2015	14,368.50
BF131202000	Solabella Apartments Brownfield		MIAMI-DADE	Southeast	7/11/2012		4.88
BF501201000	Former Pike Utilities Brownfield Area	LAKE WORTH	PALM BEACH	Southeast	7/10/2012		9.79
BF291203000	North Clark Avenue	TAMPA	HILLSBOROUGH	Southwest	6/28/2012		19.10
BF291202000	Photoengraving Incorporated	TAMPA	HILLSBOROUGH	Southwest	6/28/2012		0.60
BF061201000	Captiva Cove Brownfield Area	POMPANO BEACH	BROWARD	Southeast	6/12/2012		19.66
BF521201000	Sam's Club Site Area	SAINT PETERSBURG	PINELLAS	Southwest	6/7/2012		14.00
BF641203000	DeLand Economic Enhancement District	DELAND	VOLUSIA	Central	5/21/2012		1.86

Area ID	Area Name	City	County	DEP District	Original Resolution Date	Amended Resolution Date	Acreage <sup>1</sup>
BF531205000	Cigar Factory Brownfield Area	BARTOW	POLK	Southwest	4/16/2012		2.06
BF101201000	938 Hall Park Road	GREEN COVE SPRINGS	CLAY	Northeast	3/27/2012		4.74
BF291201000	Former Wood Preserving Site		HILLSBOROUGH	Southwest	3/7/2012		17.45
BF051201000	Unincorporated Brevard County Area		BREVARD	Central	3/1/2012		0.00
BF591201000	Trademark Metals Recycling Brownfield Area		SEMINOLE	Central	2/28/2012		7.15
BF641202000	US 1 North Brownfield Area	ORMOND BEACH	VOLUSIA	Central	2/21/2012		2,113.00
BF061202000	Job Acceleration Zone (JAZ)	FT LAUDERDALE	BROWARD	Southeast	2/21/2012		5.84
BF531203000	Fort Meade Residential Redevelopment Area #2	FORT MEADE	POLK	Southwest	2/14/2012		13.76
BF531201000	Fort Meade CRA/Industrial Redevelopment Area	FORT MEADE	POLK	Southwest	2/14/2012		2,937.32
BF161201000	9225 Dames Point Road Area	JACKSONVILLE	DUVAL	Northeast	2/14/2012		37.35
BF531202000	Fort Meade Residential Redevelopment Area #1	FORT MEADE	POLK	Southwest	2/14/2012		12.25
BF531204000	Fort Meade Outdoor Recreation Redevelopment Area	FORT MEADE	POLK	Southwest	2/14/2012		427.20
BF291204000	West Saint Louis Street	TAMPA	HILLSBOROUGH	Southwest	2/9/2012		12.00
BF221201000	Moore Haven Brownfield Area	MOORE HAVEN	GLADES	South	2/7/2012		214.44
BF511201000	Arbours at Fort King		PASCO	Southwest	1/10/2012		13.54
BF641201000	Granada Economic Opportunity Zone	ORMOND BEACH	VOLUSIA	Central	1/3/2012	5/21/2013	398.00
BF161101000	5441 West 5th Street	JACKSONVILLE	DUVAL	Northeast	12/13/2011		4.29
BF291102000	GC Partners LLC Brownfield Area		HILLSBOROUGH	Southwest	12/13/2011		0.63
BF131103000	Mirabella Brownfield Area		MIAMI-DADE	Southeast	12/6/2011		10.55
BF121101000	3072 West U.S. Highway 90 Area	LAKE CITY	COLUMBIA	Northeast	11/21/2011		2.56
BF561101000	Former H.D. King Power Plant	FORT PIERCE	ST. LUCIE	Southeast	11/21/2011	7/16/2012	6.68
BF061103000	ZF Brownfield Area	MIRAMAR	BROWARD	Southeast	11/15/2011		16.00
BF481101000	C.L. Industries: ROCC		ORANGE	Central	11/1/2011		2.33

Area ID	Area Name	City	County	DEP District	Original Resolution Date	Amended Resolution Date	Acreage <sup>1</sup>
BF461101000	25 Miracle Strip Parkway SW Area	FT WALTON BEACH	OKALOOSA	Northwest	10/25/2011		0.67
BF291101000	Pendola Point Brownfield Area		HILLSBOROUGH	Southwest	10/11/2011		168.00
BF361101000	Cleveland Avenue Brownfield Area	FORT MYERS	LEE	South	9/19/2011		617.00
BF131102000	1350 West 49 Street	HIALEAH	MIAMI-DADE	Southeast	9/13/2011		4.65
BF051106000	Cocoa Economic Enhancement District	COCOA	BREVARD	Central	9/13/2011		882.71
BF491101000	Kissimmee Environmental Redevelopment Area (KERA)	KISSIMMEE	OSCEOLA	Central	8/31/2011	10/27/2011	2,121.36
BF411101000	The Manatee River Hotel Brownfield Area	BRADENTON	MANATEE	Southwest	8/17/2011		0.85
BF081102000	The West Henry Street Enhancement Zone	PUNTA GORDA	CHARLOTTE	South	8/10/2011		19.20
BF531101000	Wahneta Community		POLK	Southwest	7/26/2011		7.44
BF591101000	Longwood Economic Enhancement Program	LONGWOOD	SEMINOLE	Central	7/18/2011	4/2/2012	1,099.53
BF061102000	Hollywood Incinerator Ash Dump (HIAD)	HOLLYWOOD	BROWARD	Southwest	7/13/2011		30.72
BF641101000	Municipal Airport and the Airport Industrial Park Area	NEW SMYRNA BEACH	VOLUSIA	Central	6/28/2011		739.63
BF051105000	Norhtwest Corner of SR405 and US Highway 1	TITUSVILLE	BREVARD	Central	6/14/2011		14.45
BF051103000	4710 South Washington Avenue	TITUSVILLE	BREVARD	Central	6/14/2011		31.86
BF051104000	West 50 Plaza LLC	TITUSVILLE	BREVARD	Central	6/14/2011		16.83
BF081101000	The Murdock Village Enhancement Zone		CHARLOTTE	South	5/24/2011		972.01
BF131101000	8400 Coral Way	MIAMI	MIAMI-DADE	Southeast	5/17/2011		10.76
BF131104000	Doral Décor District Brownfield Area		MIAMI-DADE	Southeast	5/11/2011		247.23
BF171102000	Barrancas Redevelopment Area	PENSACOLA	ESCAMBIA	Northwest	5/5/2011		671.75
BF311101000	Fellsmere Economic Enhancement District	FELLSMERE	INDIAN RIVER	Central	5/5/2011	7/19/2012	1,012.00
BF051102000	Space Coast Regional Airport and Arthur Dunn Airpark Area	TITUSVILLE	BREVARD	Central	4/12/2011		1,610.72
BF031101000	450 6th Street, LLC Brownfield Area	PANAMA CITY	BAY	Northwest	2/22/2011		11.65
BF351102000	Mount Dora Community Redevelopment Area	MOUNT DORA	LAKE	Central	2/15/2011		397.13

Area ID	Area Name	City	County	DEP District	Original Resolution Date	Amended Resolution Date	Acreage <sup>1</sup>
BF351101000	Northeast Community Redevelopment Area	MOUNT DORA	LAKE	Central	2/15/2011		462.21
BF171101000	3300 Mobile Highway Brownfield Area	PENSACOLA	ESCAMBIA	Northwest	1/20/2011		0.98
BF061101000	Margate Economic Enhancement District (MEED)	MARGATE	BROWARD	Southeast	1/19/2011		1,373.38
BF291001000	North Ybor Channel Brownfield Area	TAMPA	HILLSBOROUGH	Southwest	12/16/2010		25.70
BF461002000	Hollywood Blvd. Brownfield Area	FORT WALTON BEACH	OKALOOSA	Northwest	12/14/2010		236.00
BF361001000	Downtown Waterfront Brownfield Area	FT MYERS	LEE	South	12/6/2010		19.27
BF411001000	Former Wellcraft Facility Brownfield Area		MANATEE	Southwest	12/2/2010		30.80
BF291002000	Midtown Brownfield Area	PLANT CITY	HILLSBOROUGH	Southwest	11/22/2010		83.59
BF511002000	Dade City Business Center Area		PASCO	Southwest	11/16/2010		300.00
BF511001000	Dade City Business Area Brownfield	DADE CITY	PASCO	Southwest	11/9/2010		150.00
BF051006000	Rockledge Redevelopment District	ROCKLEDGE	BREVARD	Central	10/6/2010	12/5/2012	1,201.46
BF591001000	Oviedo Seminole Economic Enhancement District	OVIEDO	SEMINOLE	Central	10/4/2010		1,600.36
BF611001000	Live Oak Community Redevelopment Area	LIVE OAK	SUWANNEE	Northeast	6/15/2010		903.29
BF641003000	The Riverwalk Project Area	PORT ORANGE	VOLUSIA	Central	6/15/2010		43.41
BF351002000	Umatilla Brownfield Area	UMATILLA	LAKE	Central	6/15/2010		131.22
BF181001000	Flagler Economic Enhancement Districts		FLAGLER	Northeast	6/7/2010	5/4/2015	4,010.83
BF641006000	Edgewater Redevelopment Area (ERA)	EDGEWATER	VOLUSIA	Central	5/17/2010		1,128.68
BF051005000	WestTech S.M.A.R.T.	PALM BAY	BREVARD	Central	5/6/2010		1,713.00
BF051004000	Central Interchange S.M.A.R.T.	PALM BAY	BREVARD	Central	5/6/2010		1,320.00
BF051003000	North Interchange S.M.A.R.T.	PALM BAY	BREVARD	Central	5/6/2010		132.00
BF051002000	Riverview S.M.A.R.T.	PALM BAY	BREVARD	Central	5/6/2010		2,782.00
BF531001000	Chain of Lakes Redevelopment Incentive District-Brownfield Area	WINTER HAVEN	POLK	Southwest	4/12/2010		158.00



Area ID	Area Name	City	County	DEP District	Original Resolution Date	Amended Resolution Date	Acreage <sup>1</sup>
BF641002000	Holly Hill Special Economic Enhancement District	HOLLY HILL	VOLUSIA	Central	2/23/2010		737.40
BF461001000	Unincorporated Greater Lovejoy Community		OKALOOSA	Northwest	2/16/2010		136.49
BF641004000	Central Business Corridors Economic Enhancement Area	DAYTONA BEACH	VOLUSIA	Central	2/3/2010		3,474.63
BF641005000	1601 Tionia Road	NEW SMYRNA BEACH	VOLUSIA	Central	1/26/2010		4.99
BF351001000	Carver Heights/Montclair Area CRA	LEESBURG	LAKE	Central	1/25/2010		1,162.22
BF641001000	South Daytona Florida Brownfields Economic Enhancement Area	SOUTH DAYTONA	VOLUSIA	Central	1/12/2010		647.03
BF500903000	Boynton Beach Community Redevelopment	BOYNTON BEACH	PALM BEACH	Southeast	12/1/2009		293.41
BF110901000	Bayshore Cultural Arts Catalytic Facility for Redevelopment	NAPLES	COLLIER	South	11/10/2009		17.67
BF290901000	Lakewood Pointe Brownfield Area	SEFFNER	HILLSBOROUGH	Southwest	10/14/2009		15.00
BF050901000	West Melbourne Area Voluntary Enhancement (WAVE) District	WEST MELBOURNE	BREVARD	Central	10/6/2009	5/17/2011	908.27
BF480901000	Bonita Fountains Phase 2 ROCC		ORANGE	Central	8/4/2009		44.77
BF500902000	Pahokee Plaza Area	PAHOKEE	PALM BEACH	Southeast	7/16/2009		2.32
BF640901000	New Smyrna Beach Brownfield Enhancement Zone (NSB BREZ)	NEW SMYRNA BEACH	VOLUSIA	Central	7/15/2009		645.76
BF590901000	Goldsboro Redevelopment and Economic Enhancement Neighborhood (GREEN)	SANFORD	SEMINOLE	Central	5/1/2009		53.85
BF160901000	Imeson Consolidated Services, LLC. Site	JACKSONVILLE	DUVAL	Northeast	5/1/2009		45.70
BF010901000	The Phoenix Commercial Economic Enhancement District		ALACHUA	Northeast	4/28/2009		57.99
BF500901000	Greater Lake Worth Park of Commerce	LAKE WORTH	PALM BEACH	Southeast	3/16/2009		453.00
BF420901000	Maricamp Brownfields Area	OCALA	MARION	Central	2/3/2009		33.70
BF520804000	Gateway Centre Business Park Addition One Tract A	ST PETERSBURG	PINELLAS	Southwest	12/30/2008		93.40

Area ID	Area Name	City	County	DEP District	Original Resolution Date	Amended Resolution Date	Acreage <sup>1</sup>
BF120801000	Lake City Brownfields Area	LAKE CITY	COLUMBIA	Northeast	12/15/2008		2,476.26
BF290804000	Crosland-Varela Westshore Area	TAMPA	HILLSBOROUGH	Southwest	12/11/2008	12/20/2012	6.86
BF290803000	Envirofocus Technologies Brownfield Area	TAMPA	HILLSBOROUGH	Southwest	12/11/2008		21.18
BF060801000	Dania Beach Brownfield Area	DANIA BEACH	BROWARD	Southeast	12/9/2008		1,349.00
BF590807000	Sanford Waterfront Economic Enhancement Area	SANFORD	SEMINOLE	Central	11/24/2008		789.37
BF650801000	St. Marks Refinery Property	ST MARKS	WAKULLA	Northwest	11/24/2008		56.73
BF480805000	Orlando Commerce Park ROCC Area	ORLANDO	ORANGE	Central	11/11/2008		51.36
BF460801000	Commerce and Technology Park Area	FT WALTON BEACH	OKALOOSA	Northwest	10/14/2008		294.72
BF580801000	1783-1785 & 1791 Tamiami Trail Area	VENICE	SARASOTA	Southwest	10/14/2008		0.58
BF050802000	Melbourne Economic Enhancement District (MEED)	MELBOURNE	BREVARD	Central	9/19/2008		5,939.68
BF480803000	Innovation Way ROCC		ORANGE	Central	9/19/2008		5,527.36
BF520802000	Pinellas County Largo Area-wide Brownfield	LARGO	PINELLAS	Southwest	9/18/2008	9/6/2011	909.95
BF590805000	Greeneway Interchange S.E.E.D. / Brownfield Area	WINTER SPRINGS	SEMINOLE	Central	9/17/2008		411.12
BF590804000	Village Walk S.E.E.D. / Brownfield Area	WINTER SPRINGS	SEMINOLE	Central	9/17/2008		418.55
BF590803000	Town Center S.E.E.D. / Brownfield Area	WINTER SPRINGS	SEMINOLE	Central	9/17/2008		548.72
BF520805000	Pinellas County Ashley Place Brownfield		PINELLAS	Southwest	9/16/2008		3.66
BF590809000	Unincorporated Seminole Economic Enhancement District		SEMINOLE	Central	9/9/2008		954.72
BF160804000	720 Atlantic Boulevard Brownfield Area	NEPTUNE BEACH	DUVAL	Northeast	8/20/2008		1.27
BF520801000	Pinellas County Dansville Brownfield Area	LARGO	PINELLAS	Southwest	8/19/2008		60.39
BF170802000	2800 Hollywood Avenue	PENSACOLA	ESCAMBIA	Northwest	8/18/2008		18.91
BF590806000	The PLI Public Lands and Institutions Zoning Area		SEMINOLE	Central	8/12/2008		69.95
BF160803000	Former Jacksonville Raceway Area	JACKSONVILLE	DUVAL	Northeast	7/29/2008		117.03

Area ID	Area Name	City	County	DEP District	Original Resolution Date	Amended Resolution Date	Acreage <sup>1</sup>
BF160802000	The Opportunity Project	JACKSONVILLE	DUVAL	Northeast	7/23/2008		0.46
BF160801000	Tree Hills Nature Center	JACKSONVILLE	DUVAL	Northeast	7/23/2008		21.32
BF350801000	City of Tavares CRA Economic Enhancement District	TAVARES	LAKE	Central	7/23/2008		384.67
BF050801000	Casbah Properties LLC Brownfields Area	MELBOURNE	BREVARD	Central	7/22/2008		0.32
BF130834000	Golden Glades B		MIAMI-DADE	Southeast	7/11/2008		30.85
BF130824000	Biscayne Park		MIAMI-DADE	Southeast	7/11/2008		232.41
BF130845000	Tamiami		MIAMI-DADE	Southeast	7/11/2008		214.32
BF130825000	Coral Terrace		MIAMI-DADE	Southeast	7/11/2008		317.11
BF130826000	Eastern Shore A		MIAMI-DADE	Southeast	7/11/2008		5.04
BF130827000	Eastern Shore B		MIAMI-DADE	Southeast	7/11/2008		143.21
BF130828000	Eastern Shore C		MIAMI-DADE	Southeast	7/11/2008		95.26
BF130829000	Flagler Westside		MIAMI-DADE	Southeast	7/11/2008		120.51
BF130830000	Florida City - Unincorporated		MIAMI-DADE	Southeast	7/11/2008		419.01
BF130831000	Fountainbleau		MIAMI-DADE	Southeast	7/11/2008		41.23
BF130832000	Glenvar Heights		MIAMI-DADE	Southeast	7/11/2008		57.48
BF130833000	Golden Glades A		MIAMI-DADE	Southeast	7/11/2008		165.30
BF130842000	Ojus		MIAMI-DADE	Southeast	7/11/2008		522.16
BF130835000	Golden Glades C		MIAMI-DADE	Southeast	7/11/2008		62.94
BF130847000	Westview		MIAMI-DADE	Southeast	7/11/2008		0.77
BF130846000	Westchester		MIAMI-DADE	Southeast	7/11/2008		489.72
BF130843000	Sweetwater D		MIAMI-DADE	Southeast	7/11/2008		995.56
BF130841000	Lingren		MIAMI-DADE	Southeast	7/11/2008		90.58
BF130840000	Kendall West		MIAMI-DADE	Southeast	7/11/2008		271.16
BF130839000	Golden Glades G		MIAMI-DADE	Southeast	7/11/2008		216.72

Area ID	Area Name	City	County	DEP District	Original Resolution Date	Amended Resolution Date	Acreage <sup>1</sup>
BF130838000	Golden Glades F		MIAMI-DADE	Southeast	7/11/2008		4.82
BF130837000	Golden Glades E		MIAMI-DADE	Southeast	7/11/2008		197.72
BF130836000	Golden Glades D		MIAMI-DADE	Southeast	7/11/2008		41.74
BF130844000	Sweetwater E		MIAMI-DADE	Southeast	7/11/2008		174.81
BF640802000	New Port LLP	PORT ORANGE	VOLUSIA	Central	6/17/2008		32.24
BF290802000	Kracker Road Area	TAMPA	HILLSBOROUGH	Southwest	4/24/2008		112.00
BF590808000	Seminole Economic Enhancement District- Winter Springs	WINTER SPRINGS	SEMINOLE	Central	2/26/2008		109.45
BF590810000	Casselberry City Properties/S.E.E.D	CASSELBERRY	SEMINOLE	Central	2/25/2008		7.27
BF290801000	Lakeside Station Brownfield area	PLANT CITY	HILLSBOROUGH	Southwest	2/25/2008		1,286.08
BF590802000	Casselberry CRA /S.E.E.D	CASSELBERRY	SEMINOLE	Central	2/25/2008		546.33
BF590801000	Seminole Economic Enhancement District - Lake Mary	WINTER SPRINGS	SEMINOLE	Central	2/11/2008	8/13/2008	15.97
BF130814000	Miami Industrial	MIAMI	MIAMI-DADE	Southeast	2/7/2008		174.55
BF170801000	Lloyd Street and Morris Court Brownfield Area	PENSACOLA	ESCAMBIA	Northwest	1/31/2008		2.05
BF480801000	Maitland Downtown Economic Enhancement District	MAITLAND	ORANGE	Central	1/28/2008		188.78
BF290706000	Central Park Village Brownfield Area	TAMPA	HILLSBOROUGH	Southwest	12/20/2007		28.90
BF290703000	Tampa International Center Brownfield Area	TAMPA	HILLSBOROUGH	Southwest	12/20/2007		29.36
BF050701000	Manatee Point Brownfield Area	MELBOURNE	BREVARD	Central	12/11/2007		0.48
BF290704000	Tampa Tank and Welding Property	TAMPA	HILLSBOROUGH	Southwest	12/11/2007		4.31
BF590703000	Fern Park Lowes	FERN PARK	SEMINOLE	Central	12/11/2007		9.45
BF590702000	Former Central Florida Drum Facility		SEMINOLE	Central	12/11/2007	7/28/2014	6.45
BF560702000	S & S Land Company Brownfield Area	FORT PIERCE	ST. LUCIE	Southeast	11/19/2007		2.33
BF480704000	Baratta ROCC Brownfield Area	APOPKA	ORANGE	Central	11/13/2007		3.05
BF590704000	Sanford Economic Enhancement District Area	SANFORD	SEMINOLE	Central	11/12/2007		1,080.76

Area ID	Area Name	City	County	DEP District	Original Resolution Date	Amended Resolution Date	Acreage <sup>1</sup>
BF290705000	Westshore Landings One Brownfield Area	TAMPA	HILLSBOROUGH	Southwest	11/8/2007		3.70
BF570701000	Bell Ridge Brownfield Area	PACE	SANTA ROSA	Northwest	11/8/2007		49.03
BF250701000	Hardee County Enterprise Zone	WAUCHULA	HARDEE	Southwest	11/1/2007		11,931.70
BF480703000	Holden Heights ROCC Brownfield Area	ORLANDO	ORANGE	Central	8/28/2007		322.58
BF520701000	Bryan Dairy Road Brownfield Area	PINELLAS PARK	PINELLAS	Southwest	8/7/2007		3.42
BF440701000	Old Baltuff Dump Site Brownfield Area	MIDDLE TORCH KEY	MONROE	South	7/18/2007		12.81
BF640701000	William Lofts Brownfield Area	DAYTONA BEACH	VOLUSIA	Central	6/14/2007		3.70
BF480702000	Mills Park Brownfield Area	ORLANDO	ORANGE	Central	4/23/2007		14.00
BF290702000	Former TECO Hookers Point Brownfield Area	TAMPA	HILLSBOROUGH	Southwest	4/12/2007		31.97
BF170701000	Former Runyan Shipyard	PENSACOLA	ESCAMBIA	Northwest	4/12/2007		13.80
BF500701000	Carver Square Brownfield Area	DELRAY BEACH	PALM BEACH	Southeast	4/3/2007		2.42
BF590701000	Former Microvia Brownfield Area	CASSELBERRY	SEMINOLE	Central	3/12/2007		8.39
BF560701000	Coral Square Shoppes	FORT PIERCE	ST. LUCIE	Southeast	2/5/2007		15.34
BF290701000	Park N Shade Brownfield Area	RUSKIN	HILLSBOROUGH	Southwest	1/10/2007		18.30
BF290607000	Avion Park at Westshore Brownfield Area	TAMPA	HILLSBOROUGH	Southwest	12/14/2006		18.89
BF130601000	Medley Redevelopment Brownfields Area	MEDLEY	MIAMI-DADE	Southeast	12/4/2006		9.27
BF550601000	St. Augustine Ponce de Leon	ST AUGUSTINE	ST. JOHNS	Northeast	11/13/2006		283.54
BF170602000	1810 Barrancas Avenue Brownfield Area	PENSACOLA	ESCAMBIA	Northwest	11/9/2006		3.00
BF290606000	Tampa Armature Works Brownfield Area	TAMPA	HILLSBOROUGH	Southwest	10/26/2006		4.27
BF170603000	Enterkin Property Brownfield Area	PENSACOLA	ESCAMBIA	Northwest	9/21/2006		0.46
BF290603000	Circle Tampa Ventures 1	TAMPA	HILLSBOROUGH	Southwest	9/7/2006		28.00
BF290604000	Honeywell	TAMPA	HILLSBOROUGH	Southwest	8/22/2006		18.79
BF180601000	Bunnell Industrial, LLC Brownfield Area	BUNNELL	FLAGLER	Northeast	8/21/2006		43.69
BF370601000	Sunland Hospital Parcel I Brownfield Area	TALLAHASSEE	LEON	Northwest	7/1/2006	9/27/2006	5.18

Area ID	Area Name	City	County	DEP District	Original Resolution Date	Amended Resolution Date	Acreage <sup>1</sup>
BF560601000	2525 Center Road Fort Pierce	FORT PIERCE	ST. LUCIE	Southeast	6/6/2006		56.62
BF060601000	Sunrise Boulevard/NW 31st Avenue Brownfield Area	LAUDERHILL	BROWARD	Southeast	5/8/2006		93.00
BF520601000	Belleair Wastewater Treatment Plant and Town Garage		PINELLAS	Southwest	5/2/2006		3.00
BF290601000	Grand Central at Kennedy Property Brownfield Area	TAMPA	HILLSBOROUGH	Southwest	4/27/2006		4.00
BF290602000	Former 43rd Street Bay Drum Site Brownfield Area	TAMPA	HILLSBOROUGH	Southwest	4/27/2006		4.00
BF170504000	Century Town Limits Brownfield Area	CENTURY	ESCAMBIA	Northwest	4/27/2006		583.00
BF280601000	Highlands County Brownfield Area		HIGHLANDS	South	3/7/2006		12,268.00
BF480601000	Hughes Supply Mega Center Brownfield Area	ORLANDO	ORANGE	Central	2/13/2006		73.00
BF360501000	3250 Metro Parkway	FORT MYERS	LEE	South	11/21/2005		9.86
BF170503000	501 North Navy Boulevard	PENSACOLA	ESCAMBIA	Northwest	11/17/2005		17.00
BF160506000	Hughes Electrical Brownfield Area	JACKSONVILLE	DUVAL	Northeast	11/8/2005		1.00
BF060501000	Turner Envirollogic Area	DEERFIELD BEACH	BROWARD	Southeast	10/18/2005		5.00
BF520502000	Pinellas County Lealman Area-Wide Brownfield Area		PINELLAS	Southwest	9/20/2005		1,500.00
BF170502000	603 West Romana Street Area	PENSACOLA	ESCAMBIA	Northwest	9/15/2005		1.00
BF160505000	1915 Wigmore Street (Jacksonville Maritime Partners)	JACKSONVILLE	DUVAL	Northeast	9/13/2005		95.00
BF540501000	Bill Ding Avenue Brownfield Area	PALATKA	PUTNAM	Northeast	9/13/2005		9.00
BF290503000	1010-1026 North 19th Street	TAMPA	HILLSBOROUGH	Southwest	8/26/2005	12/20/2005	8.00
BF160504000	Southside Community Redevelopment Area	JACKSONVILLE	DUVAL	Northeast	8/15/2005		1,708.00
BF160503000	Kings Avenue Brownfield Area	JACKSONVILLE	DUVAL	Northeast	8/15/2005		1.00
BF420502000	Southeast Brownfield Expansion Area	OCALA	MARION	Central	8/9/2005	6/16/2008	27.00
BF170501000	929 Massachusetts Avenue Area	PENSACOLA	ESCAMBIA	Northwest	8/4/2005		8.02

Area ID	Area Name	City	County	DEP District	Original Resolution Date	Amended Resolution Date	Acreage <sup>1</sup>
BF610501000	10747 68th Terrace Area	LIVE OAK	SUWANNEE	Northeast	8/2/2005		36.55
BF160502000	Insteel Wire Products Area	JACKSONVILLE	DUVAL	Northeast	7/5/2005		16.00
BF010501000	University Corners Brownfield Area	GAINESVILLE	ALACHUA	Northeast	6/27/2005		4.00
BF520501000	Community Waterfront Park Area	ST PETERSBURG	PINELLAS	Southwest	3/22/2005		3.00
BF130503000	Dedicated Transportation	MIAMI	MIAMI-DADE	Southeast	3/1/2005		1.61
BF100501000	Greater Green Cove Springs Area	GREEN COVE SPRINGS	CLAY	Northeast	3/1/2005	2/17/2009	5,579.73
BF130502000	Miami EZ Expansion Area	MIAMI	MIAMI-DADE	Southeast	2/24/2005		4,809.66
BF130501000	Homestead CRA Area	HOMESTEAD	MIAMI-DADE	Southeast	2/22/2005		1,188.00
BF290502000	4010 North Lois Avenue (former Borden property)	TAMPA	HILLSBOROUGH	Southwest	2/10/2005		7.50
BF290501000	W.T. Edwards Facility	TAMPA	HILLSBOROUGH	Southwest	2/10/2005		26.00
BF420501000	West Ocala Expansion Area	OCALA	MARION	Central	2/1/2005		1,015.00
BF500501000	Lake Worth Closed Municipal Landfill	LAKE WORTH	PALM BEACH	Southeast	2/1/2005		65.00
BF160501000	Cecil Field, I.I. Park & Phillips Hwy Corridor	JACKSONVILLE	DUVAL	Northeast	1/25/2005	8/22/2011	2,199.00
BF520403000	Alps Brownfield Area		PINELLAS	Southwest	12/21/2004		7.00
BF370401000	Former Bayliner Facility Area	TALLAHASSEE	LEON	Northwest	12/14/2004		31.00
BF350401000	Eustis Downtown & East Town Brownfield Area	EUSTIS	LAKE	Central	11/18/2004		926.00
BF080401000	Enterprise Charlotte Airport Park		CHARLOTTE	South	10/26/2004	11/8/2011	3,286.82
BF480401000	DEEDS Orlando Expanded	ORLANDO	ORANGE	Central	10/11/2004	1/11/2007	6,535.54
BF500402000	W.P.B. Downtown Northwood/Pleasant City CR Expanded Area	WEST PALM BEACH	PALM BEACH	Southeast	7/19/2004		26.00
BF520402000	Sod Farm Site	ST PETERSBURG	PINELLAS	Southwest	7/15/2004		122.00
BF130401000	Aguaclara Brownfield Area	MIAMI	MIAMI-DADE	Southeast	6/24/2004		2.00
BF060401000	Harbour Cove Brownfield Area	HALLANDALE BEACH	BROWARD	Southeast	6/15/2004		7.06
BF500401000	Lake Worth CRA District	LAKE WORTH	PALM BEACH	Southeast	6/1/2004		737.00



Area ID	Area Name	City	County	DEP District	Original Resolution Date	Amended Resolution Date	Acreage <sup>1</sup>
BF580401000	Marion Anderson Place Urbaculture Area	SARASOTA	SARASOTA	Southwest	5/6/2004		18.00
BF170401000	1123 West Scott Street	PENSACOLA	ESCAMBIA	Northwest	5/6/2004		1.00
BF240401000	Hamilton County EZ Area		HAMILTON	Northeast	4/20/2004	12/16/2008	12,807.00
BF580402000	Wireman Property, aka Sarasota Dreambuilders	SARASOTA	SARASOTA	Southwest	4/19/2004		2.00
BF640401000	Daytona Beach Area- Aero Park	DAYTONA BEACH	VOLUSIA	Central	4/7/2004	9/8/2008	1,397.00
BF110401000	Immokalee Airport Area	IMMOKALEE	COLLIER	South	3/24/2004		211.43
BF520401000	Young-Rainey Star Center Area		PINELLAS	Southwest	3/9/2004		96.00
BF050401000	Cocoa Brownfield Area	COCOA	BREVARD	Central	1/13/2004		1,549.00
BF290401000	The Place at Channelside	TAMPA	HILLSBOROUGH	Southwest	1/8/2004		2.25
BF500303000	Westgate/Belvedere Homes CRA Area		PALM BEACH	Southeast	12/16/2003		1,264.00
BF050301000	Kirby Industrial Park 1 Brownfield Area	PALM BAY	BREVARD	Central	12/4/2003		36.00
BF500302000	W.P.B. Downtown Northwood/Pleasant City CRA Areas	WEST PALM BEACH	PALM BEACH	Southeast	11/24/2003	7/18/2008	118.00
BF170302000	3415 Barrancas Avenue BF Area	PENSACOLA	ESCAMBIA	Northwest	11/17/2003		1.00
BF360301000	Ft. Myers Wellfield Area	FORT MYERS	LEE	South	11/17/2003		870.00
BF570301000	Santa Rosa Brownfield Redevelopment Area		SANTA ROSA	Northwest	11/13/2003		655.00
BF130302000	City of Hialeah Brownfield Area	HIALEAH	MIAMI-DADE	Southeast	10/28/2003		2,986.00
BF290303000	Centro Asturiano Place Brownfield Area	TAMPA	HILLSBOROUGH	Southwest	10/2/2003		7.00
BF290304000	12th Street Operations Yard	TAMPA	HILLSBOROUGH	Southwest	10/2/2003		7.50
BF160301000	Cecil Brownfields Area	JACKSONVILLE	DUVAL	Northeast	9/17/2003		8,124.00
BF570302000	Milton Brownfield Redevelopment Area	MILTON	SANTA ROSA	Northwest	9/9/2003		1,078.00
BF580302000	Fruitville Brownfields Area		SARASOTA	Southwest	7/23/2003		122.00
BF060302000	MABB Dania Beach Brownfield Area	DANIA BEACH	BROWARD	Southeast	5/28/2003		4.00
BF060301000	Dania Motocross Brownfield Area	DANIA BEACH	BROWARD	Southeast	5/28/2003		12.00
BF130301000	Beacons Lake Brownfield Area		MIAMI-DADE	Southeast	5/20/2003	7/11/2008	568.40

Area ID	Area Name	City	County	DEP District	Original Resolution Date	Amended Resolution Date	Acreage <sup>1</sup>
BF360302000	Dunbar Enterprise Zone Brownfield Area	FORT MYERS	LEE	South	5/19/2003		2,778.00
BF500301000	Belle Glade Brownfield Area	BELLE GLADE	PALM BEACH	Southeast	5/19/2003		1,091.00
BF620301000	Taylor County Brownfield Area	PERRY	TAYLOR	Northeast	5/5/2003		20.00
BF290302000	Ameristeel Brownfield Area	TAMPA	HILLSBOROUGH	Southwest	4/24/2003		63.00
BF580301000	Former Workman Electronics Area	SARASOTA	SARASOTA	Southwest	2/26/2003		9.00
BF290301000	Tampa Heights Brownfield Area	TAMPA	HILLSBOROUGH	Southwest	1/30/2003		10.00
BF170301000	MidTown BF Redevelopment Area	PENSACOLA	ESCAMBIA	Northwest	1/23/2003		370.00
BF170201000	Pensacola Mainstreet Area	PENSACOLA	ESCAMBIA	Northwest	12/19/2002		3.00
BF160205000	Sunbeam Hill Area	JACKSONVILLE	DUVAL	Northeast	12/16/2002		224.00
BF160204000	Advantus Transport Area	JACKSONVILLE	DUVAL	Northeast	12/12/2002		13.00
BF160203000	Raven Transport Holding Area	JACKSONVILLE	DUVAL	Northeast	12/5/2002		9.00
BF130201000	Biscayne Commons Area	NORTH MIAMI BEACH	MIAMI-DADE	Southeast	12/3/2002		12.53
BF480202000	DEEDS Orlando	ORLANDO	ORANGE	Central	11/21/2002		21.00
BF290204000	North 56th Street Area		HILLSBOROUGH	Southwest	11/7/2002		8.38
BF230201000	Port St. Joe Area	PORT ST JOE	GULF	Northwest	11/5/2002		168.00
BF410201000	Manatee Avenue West Area	BRADENTON	MANATEE	Southwest	10/4/2002		3.00
BF160202000	Phillips Highway	JACKSONVILLE	DUVAL	Northeast	9/30/2002		43.00
BF060202000	Liberia / Oakwood Hills Area	HOLLYWOOD	BROWARD	Southeast	9/18/2002		148.00
BF160201000	Riverplace Boulevard Area	JACKSONVILLE	DUVAL	Northeast	9/5/2002		4.00
BF090201000	Wal-Mart Inverness	INVERNESS	CITRUS	Southwest	7/9/2002		40.00
BF300201000	Chipley Industrial Park Area	CHIPLEY	WASHINGTON	Northwest	5/14/2002		113.00
BF290203000	Washington Street Crossing Area	TAMPA	HILLSBOROUGH	Southwest	4/25/2002		1.00
BF480201000	Winter Garden Downtown CRA	WINTER GARDEN	ORANGE	Central	4/11/2002	7/14/2008	726.00
BF290202000	Wal-Mart Buckley-Shuler Area		HILLSBOROUGH	Southwest	3/20/2002		40.00

Area ID	Area Name	City	County	DEP District	Original Resolution Date	Amended Resolution Date	Acreage <sup>1</sup>
BF060201000	US 441/SR 7 Corridor	LAUDERHILL	BROWARD	Southeast	3/11/2002		504.00
BF500101000	Former Palm Beach Lakes Golf Course	WEST PALM BEACH	PALM BEACH	Southeast	6/25/2001		96.00
BF530101000	CSX Railyard - Lakeland	LAKELAND	POLK	Southwest	4/20/2001		99.00
BF160101000	Southside Generating Station (SGS) Area	JACKSONVILLE	DUVAL	Northeast	4/3/2001		37.00
BF170101000	Strategic Crossings Corporation	PENSACOLA	ESCAMBIA	Northwest	1/25/2001		2.00
BF290101000	Tampa Port Authority	TAMPA	HILLSBOROUGH	Southwest	1/4/2001		600.00
BF420101000	Ocala Area #7 (817 North Pine Avenue)	OCALA	MARION	Central	1/2/2001		2.00
BF060003000	Uniweld Products Area	DANIA BEACH	BROWARD	Southeast	12/12/2000		3.00
BF290002000	WRB at Old Hopewell Road	TAMPA	HILLSBOROUGH	Southwest	12/6/2000		9.00
BF050001000	Village Green Area	ROCKLEDGE	BREVARD	Central	12/6/2000		10.00
BF420002000	Ocala Area #6 (Silver Springs Blvd)	OCALA	MARION	Central	10/24/2000		1.00
BF130001000	Potamkin Properties	MIAMI BEACH	MIAMI-DADE	Southeast	6/7/2000	7/11/2008	2.85
BF160001000	Pilot Project Area	JACKSONVILLE	DUVAL	Northeast	3/24/2000		11,520.00
BF370002000	Gaines Street Corridor	TALLAHASSEE	LEON	Northwest	3/22/2000		457.00
BF370001000	Cascade Park MGP and Landfill	TALLAHASSEE	LEON	Northwest	3/22/2000		23.00
BF420001000	Ocala Area #5 (NW 1st Street)	OCALA	MARION	Central	2/15/2000		1.00
BF060002000	Lauderdale Lakes Area	LAUDERDALE LAKES	BROWARD	Southeast	1/25/2000		21.00
BF010001000	Gainesville Area	GAINESVILLE	ALACHUA	Northeast	1/24/2000		29.34
BF290001000	Robbins Manufacturing Storage Yard	TAMPA	HILLSBOROUGH	Southwest	1/19/2000		24.00
BF530001000	Auburndale Wal-Mart Area	AUBURNDALE	POLK	Southwest	1/17/2000		10.00
BF060001000	Miramar Area	MIRAMAR	BROWARD	Southeast	1/5/2000		7.00
BF069901000	Pompano Beach Northwest Area	POMPANO BEACH	BROWARD	Southeast	11/23/1999		3,084.00
BF429903000	Ocala Area #4 (NE 14th Street)	OCALA	MARION	Central	11/9/1999		6.00
BF529901000	St. Petersburg Area	ST PETERSBURG	PINELLAS	Southwest	10/21/1999	11/25/2008	122.00

Area ID	Area Name	City	County	DEP District	Original Resolution Date	Amended Resolution Date	Acreage <sup>1</sup>
BF179901000	Palafox Corridor Redevelopment Area	PENSACOLA	ESCAMBIA	Northwest	9/16/1999		598.00
BF139906000	Sweetwater A Area		MIAMI-DADE	Southeast	7/13/1999	7/11/2008	68.57
BF139902000	Carol City Area		MIAMI-DADE	Southeast	7/13/1999	7/11/2008	3,993.38
BF139903000	Dade-Opa-Locka Area		MIAMI-DADE	Southeast	7/13/1999	7/11/2008	2,688.11
BF139905000	Central Miami Area		MIAMI-DADE	Southeast	7/13/1999	7/11/2008	4,111.32
BF139908000	Sweetwater C Area		MIAMI-DADE	Southeast	7/13/1999	7/11/2008	782.60
BF139909000	South Miami Area		MIAMI-DADE	Southeast	7/13/1999	7/11/2008	20.03
BF139910000	Richmond Heights Area		MIAMI-DADE	Southeast	7/13/1999	7/11/2008	642.00
BF139911000	Perrine Area		MIAMI-DADE	Southeast	7/13/1999	7/11/2008	2,689.57
BF139912000	South Dade Area		MIAMI-DADE	Southeast	7/13/1999	7/11/2008	5,055.48
BF139913000	Redlands\Leisure City Area		MIAMI-DADE	Southeast	7/13/1999	7/11/2008	2,140.27
BF139904000	Model City\Brownsville Area		MIAMI-DADE	Southeast	7/13/1999	7/11/2008	9,708.02
BF429902000	Ocala Area #3 (NW 10th Street)	OCALA	MARION	Central	6/8/1999		1.00
BF489901000	Orlando-Sunterra Area	ORLANDO	ORANGE	Central	5/24/1999		14.00
BF429901000	Ocala Area #2 (N Magnolia Ave)	OCALA	MARION	Central	5/11/1999		1.00
BF209901000	Quincy Area	QUINCY	GADSDEN	Northwest	4/27/1999		4,890.00
BF369901000	Ft Myers Coal Gasification Area	FORT MYERS	LEE	South	4/19/1999		7.00
BF139901000	Opa-Locka Area	OPA-LOCKA	MIAMI-DADE	Southeast	2/24/1999		1,424.34
BF429801000	Ocala Area #1	OCALA	MARION	Central	3/24/1998		329.00
BF139801000	Miami Area	MIAMI	MIAMI-DADE	Southeast	3/10/1998		5,018.15
BF529701000	Clearwater Area	CLEARWATER	PINELLAS	Southwest	10/16/1997		2,071.06
<b>Total Approximate Acreage:</b>							<b>266,132.71</b>

Area ID	Area Name	City	County	DEP District	Original Resolution Date	Amended Resolution Date	Acreage <sup>1</sup>
---------	-----------	------	--------	--------------	--------------------------	-------------------------	----------------------

<sup>1</sup> NR = Not Reported

Total approximate acreage includes actual contaminated and perceived contaminated properties, viable business properties, residential properties, green spaces, and parks etc. Total approximate acreage is not representative of the number of areas that may require cleanup due to contamination but properties (acres) that may be eligible for economic and regulatory incentives pursuant to the Brownfields Redevelopment Act. The determination and designation of a brownfield area is the responsibility of the municipality or county government.

**APPENDIX B**  
**Sites with Executed Brownfield Site Rehabilitation Agreements**

# Sites with Executed BSRAs

Florida Brownfields Redevelopment Program

Thursday, July 07, 2016

4:07:53 PM

**Total Sites: 261**



Area ID	Site ID	Site Name	City	County	District	BSRA Executed Date	SRCO Issue Date	Acreage <sup>1</sup>
BF131104000	BF131104001	Hawthorne Suites Doral Décor District BF Site		MIAMI-DADE	Southeast	06/27/2016		1.19
BF131601000	BF131601001	NW 62nd St Passive Park Green Reuse Site		MIAMI-DADE	Southeast	06/27/2016		5.02
BF139912000	BF139912002	Redland Market Village Brownfield Site	MIAMI	MIAMI-DADE	Southeast	06/27/2016		23.68
BF061602000	BF061602001	Wisdom Village Crossing Brownfield Site	FORT LAUDERDALE	BROWARD	Southeast	05/02/2016		NR
BF411201000	BF411201001	Former Edenfield Property	PALMETTO	MANATEE	Southwest	01/28/2016		NR
BF521202000	BF521202001	126th Ave. N. Dump	CLEARWATER	PINELLAS	Southwest	12/28/2015		15.20
BF480801000	BF480801001	Maitland City Center	MAITLAND	ORANGE	Central	12/22/2015		3.27
BF501502000	BF501502001	Brookstone Delray Associates	DELRAY BEACH	PALM BEACH	Southeast	12/22/2015		6.75
BF591501000	BF591501001	The Shoppes at Sterling Creek	OVIEDO	SEMINOLE	Central	12/22/2015		10.01
BF131502000	BF131502001	Doral Legacy Park Green Reuse Site		MIAMI-DADE	Southeast	12/21/2015		19.55
BF131503000	BF131503001	NE 83rd St. Green Reuse Site	EL PORTAL	MIAMI-DADE	Southeast	12/21/2015		1.92
BF139904000	BF139904004	Former Westview Golf Course (South)		MIAMI-DADE	Southeast	12/21/2015		92.90
BF139912000	BF139912001	Keys Crossing, Ltd.		MIAMI-DADE	Southeast	12/21/2015		4.23
BF161501000	BF161501001	KWM Brownfield Site	JACKSONVILLE	DUVAL	Northeast	12/21/2015		4.90

## Special Notes:

- # Site Rehabilitation Completion Order with Conditions Issued
- \* PRFBRS chose to voluntarily terminate BSRA and the BSRA was terminated in October by mutual consent
- \*\* Please note, BSRA BF00101004 has been superseded by BSRAs BF500101005 and BF00101006. Please refer to the new BSRAs for detail regarding responsible parties, site boundaries, etc.
- ^ BSRA revoked for failure to comply.

<sup>1</sup> NR = Not Reported  
 BSRA = Brownfields Site Rehabilitation Agreement (Sites Under Remediation)  
 SRCO = Site Rehabilitation Completion Order ("No Further Action")



Area ID	Site ID	Site Name	City	County	District	BSRA Executed Date	SRCO Issue Date	Acreage <sup>1</sup>
BF291501000	BF291501001	Former Amazon Hose Property Site	TAMPA	HILLSBOROUGH	Southwest	12/21/2015		2.28
BF370002000	BF370002006	ZAC Brownfield (aka CSX Parcel 4)	TALLAHASSEE	LEON	Northwest	12/21/2015		2.62
BF481502000	BF481502001	Former Chevron Brownfield Site	ORLANDO	ORANGE	Central	12/21/2015		0.57
BF650801000	BF650801001	Former St. Marks Refinery - West Parcel	ST MARKS	WAKULLA	Northwest	12/21/2015		46.20
BF650801000	BF650801002	St. Marks Refinery - East Parcel	ST MARKS	WAKULLA	Northwest	12/21/2015		9.54
BF061503000	BF061503001	West Atlantic Blvd Apartments Investors LLC	POMPANO BEACH	BROWARD	Southeast	12/18/2015		26.84
BF160001000	BF160001012	1737 Jessie Street Brownfield Site	JACKSONVILLE	DUVAL	Northeast	12/18/2015		6.65
BF160504000	BF160504001	Broadstone River House	JACKSONVILLE	DUVAL	Northeast	12/18/2015		3.60
BF131501000	BF131501001	Taylor Park Green Reuse Site	NORTH MIAMI BEACH	MIAMI-DADE	Southeast	12/16/2015		21.88
BF250701000	BF250701001	226 W. Main St.	WAUCHULA	HARDEE	Southwest	12/16/2015		0.19
BF501501000	BF501501001	Former Servico Landfill Brownfield Site	WEST PALM BEACH	PALM BEACH	Southeast	12/16/2015		8.94
BF481501000	BF481501001	GENE Brownfield Site	ORLANDO	ORANGE	Central	12/15/2015		46.40
BF061502000	BF061502001	Northwest Gardens V Brownfield Site	FORT LAUDERDALE	BROWARD	Southeast	12/10/2015		5.87
BF061501000	BF061501001	Pan American Coral Springs Brownfield Site	CORAL SPRINGS	BROWARD	Southeast	12/09/2015		3.41
BF521501000	BF521501001	Former Arab Pest Control Brownfield Site	ST PETERSBURG	PINELLAS	Southwest	10/26/2015		0.43
BF291404000	BF291404001	Port Redwing Brownfield Site	GIBSONTON	HILLSBOROUGH	Southwest	10/13/2015		31.24
BF500301000	BF500301001	Belle Glade Hospital Brownfield Site	BELLE GLADE	PALM BEACH	Southeast	08/18/2015		14.64
BF501401000	BF501401001	480 US Hwy 27 North	SOUTH BAY	PALM BEACH	Southeast	08/05/2015		0.29
BF641004000	BF641004004	Former Tire Kingdom Brownfield Site	DAYTONA BEACH	VOLUSIA	Central	12/31/2014	12/15/2015	0.94

#### **Special Notes:**

# Site Rehabilitation Completion Order with Conditions Issued

\* PRFBSR chose to voluntarily terminate BSRA and the BSRA was terminated in October by mutual consent

\*\* Please note, BSRA BF00101004 has been superseded by BSRAs BF500101005 and BF00101006. Please refer to the new BSRAs for detail regarding responsible parties, site boundaries, etc.

^ BSRA revoked for failure to comply.

<sup>1</sup> NR = Not Reported

BSRA = Brownfields Site Rehabilitation Agreement (Sites Under Remediation)

SRCO = Site Rehabilitation Completion Order ("No Further Action")

Area ID	Site ID	Site Name	City	County	District	BSRA Executed Date	SRCO Issue Date	Acreage <sup>1</sup>
BF291406000	BF291406001	Peoples Gas System - North Channelside Drive	TAMPA	HILLSBOROUGH	Southwest	12/30/2014		7.31
BF291402000	BF291402001	Delaney Creek Brownfield Redevelopment Area - Exide Tech.	TAMPA	HILLSBOROUGH	Southwest	12/29/2014		36.18
BF161402000	BF161402001	Gerdau Ameristeel Site	JACKSONVILLE	DUVAL	Northeast	12/24/2014		149.28
BF291405000	BF291405001	Spruce Street Landfill #2 Site	TAMPA	HILLSBOROUGH	Southwest	12/24/2014		3.42
BF481401000	BF481401001	Orlando Drum Co.	ORLANDO	ORANGE	Central	12/24/2014		8.21
BF521401000	BF521401001	Former Countryside Executive Golf Course	CLEARWATER	PINELLAS	Southwest	12/24/2014		44.28
BF131403000	BF131403001	Rucks Park Brownfield Site	NORTH MIAMI	MIAMI-DADE	Southeast	12/23/2014		6.64
BF161403000	BF161403001	Bill Johns Waste Oil Site	JACKSONVILLE	DUVAL	Northeast	12/23/2014		3.52
BF521304000	BF521304001	Seminole Mall Site	SEMINOLE	PINELLAS	Southwest	12/22/2014		39.56
BF161401000	BF161401001	Penman Plaza Ace Parcel Brownfield Site	NEPTUNE BEACH	DUVAL	Northeast	12/19/2014		2.07
BF480401000	BF480401007	Creative Digital Village	ORLANDO	ORANGE	Central	12/19/2014		67.00
BF480401000	BF480401008	Soccer Stadium	ORLANDO	ORANGE	Central	12/19/2014		14.85
BF480703000	BF480703002	Rio Grande Acquisition Company	ORLANDO	ORANGE	Central	12/19/2014		20.81
BF139904000	BF139904003	1255 NW 103rd Street Brownfield Site	MIAMI	MIAMI-DADE	Southeast	12/18/2014		0.86
BF590802000	BF590802002	Casselberry Former Shell Station Site	CASSELBERRY	SEMINOLE	Central	11/25/2014		0.65
BF640401000	BF640401003	ERAU Former Bus Depot	DAYTONA BEACH	VOLUSIA	Central	10/28/2014	07/20/2015	13.71
BF139901000	BF139901002	Opa-Locka CDC Brownfield Site	OPA-LOCKA	MIAMI-DADE	Southeast	09/26/2014		NR
BF500402000	BF500402001	West Palm Beach Intermodal Transfer Facility / The Wedge		PALM BEACH	Southeast	09/12/2014		NR

**Special Notes:**

- # Site Rehabilitation Completion Order with Conditions Issued
- \* PRFBSR chose to voluntarily terminate BSRA and the BSRA was terminated in October by mutual consent
- \*\* Please note, BSRA BF00101004 has been superseded by BSRAs BF500101005 and BF00101006. Please refer to the new BSRAs for detail regarding responsible parties, site boundaries, etc.
- ^ BSRA revoked for failure to comply.

<sup>1</sup> NR = Not Reported  
BSRA = Brownfields Site Rehabilitation Agreement (Sites Under Remediation)  
SRCO = Site Rehabilitation Completion Order ("No Further Action")

Area ID	Site ID	Site Name	City	County	District	BSRA Executed Date	SRCO Issue Date	Acreage <sup>1</sup>
BF531205000	BF531205001	Cigar Factory Site	BARTOW	POLK	Southwest	09/11/2014	12/09/2015	2.06
BF291306000	BF291306001	Nebraska Avenue Site	TAMPA	HILLSBOROUGH	Southwest	09/03/2014		1.54
BF291403000	BF291403001	Former Hudson Nursery Brownfield Site	TAMPA	HILLSBOROUGH	Southwest	08/19/2014		10.35
BF139801000	BF139801009	Wynwood N. Miami	MIAMI	MIAMI-DADE	Southeast	06/24/2014	10/29/2015	1.34
BF291303000	BF291303001	Former Redwing Trucking	TAMPA	HILLSBOROUGH	Southwest	05/16/2014		29.06
BF139801000	BF139801008	St. Martin's Place	MIAMI	MIAMI-DADE	Southeast	03/17/2014	12/19/2014 #	0.65
BF130843000	BF130843001	Procacci Sweetwater, LLC		MIAMI-DADE	Southeast	12/31/2013		5.60
BF130843000	BF130843002	Procacci 1400, LLC		MIAMI-DADE	Southeast	12/31/2013		4.33
BF131203000	BF131203001	Former Peoples Gas System	NORTH MIAMI BEACH	MIAMI-DADE	Southeast	12/31/2013		17.69
BF139801000	BF139801007	Mandy's Market	MIAMI	MIAMI-DADE	Southeast	12/31/2013		0.97
BF171102000	BF171102001	Mahogany Mill Road Boat Ramp	PENSACOLA	ESCAMBIA	Northwest	12/27/2013	12/07/2015 #	2.93
BF481303000	BF481303001	Southside Shoppes	ORLANDO	ORANGE	Central	12/23/2013		3.14
BF481304000	BF481304001	Circle C Cars	ORLANDO	ORANGE	Central	12/23/2013		0.72
BF641004000	BF641004002	Former Llyod Buick/Cadillac Site	DAYTONA BEACH	VOLUSIA	Central	12/23/2013		4.95
BF641301000	BF641301001	Country Club Crossing and The Greens at Country Club	DELAND	VOLUSIA	Central	12/23/2013	11/06/2015 #	103.38
BF061302000	BF061302001	Sunrise Wal-Mart Site	SUNRISE	BROWARD	Southeast	12/20/2013		16.64
BF411301000	BF411301001	BAV Bradenton Brownfield Site	BRADENTON	MANATEE	Southwest	12/20/2013		0.96
BF291305000	BF291305001	Tampa Water Works Park Site	TAMPA	HILLSBOROUGH	Southwest	12/12/2013		4.39
BF641004000	BF641004001	Former Massey Motors	DAYTONA BEACH	VOLUSIA	Central	12/12/2013		2.67

**Special Notes:**

# Site Rehabilitation Completion Order with Conditions Issued

\* PRFBRS chose to voluntarily terminate BSRA and the BSRA was terminated in October by mutual consent

\*\* Please note, BSRA BF00101004 has been superseded by BSRAs BF500101005 and BF00101006. Please refer to the new BSRAs for detail regarding responsible parties, site boundaries, etc.

^ BSRA revoked for failure to comply.

<sup>1</sup> NR = Not Reported

BSRA = Brownfields Site Rehabilitation Agreement (Sites Under Remediation)

SRCO = Site Rehabilitation Completion Order ("No Further Action")

Area ID	Site ID	Site Name	City	County	District	BSRA Executed Date	SRCO Issue Date	Acreage <sup>1</sup>
BF291304000	BF291304001	Former West Tampa Convention Center Site	TAMPA	HILLSBOROUGH	Southwest	11/18/2013		1.70
BF061301000	BF061301001	5001 North Federal Highway Site	POMPAN0 BEACH	BROWARD	Southeast	11/14/2013		8.41
BF130502000	BF130502001	Miami River Marina Site	MIAMI	MIAMI-DADE	Southeast	11/01/2013		8.51
BF291302000	BF291302001	Former Gulf Coast Metals Site	TAMPA	HILLSBOROUGH	Southwest	09/09/2013		3.24
BF500101000	BF500101007	Jefferson at West Palm Beach	WEST PALM BEACH	PALM BEACH	Southeast	06/28/2013		11.14
BF480401000	BF480401006	400 North Orange	ORLANDO	ORANGE	Central	05/13/2013	07/10/2013	5.66
BF590802000	BF590802001	Casselberry Police Department Site	CASSELBERRY	SEMINOLE	Central	05/09/2013		1.87
BF131301000	BF131301001	Land South Partners I Brownfield Site	NORTH MIAMI	MIAMI-DADE	Southeast	03/13/2013		0.31
BF131201000	BF131201001	Wal-Mart Neighborhood Market Site	HOMESTEAD	MIAMI-DADE	Southeast	12/28/2012		5.80
BF139801000	BF139801006	Resorts World Miami Brownfield Site	MIAMI	MIAMI-DADE	Southeast	12/28/2012		13.95
BF139901000	BF139901001	TMR Cairo Lane Site	OPA-LOCKA	MIAMI-DADE	Southeast	12/28/2012		15.62
BF531206000	BF531206001	K.C. Industries Properties, LLC Site	MULBERRY	POLK	Southwest	12/26/2012		200.00
BF480702000	BF480702001	Mills Park	ORLANDO	ORANGE	Central	12/21/2012	12/26/2012	14.00
BF480703000	BF480703001	Former Daniels Publishing Facility	ORLANDO	ORANGE	Central	12/21/2012		2.01
BF050401000	BF050401002	Former Steve's Cycles	COCOA	BREVARD	Central	12/17/2012	12/10/2013	0.97
BF291202000	BF291202001	Photoengraving Brownfield Site	TAMPA	HILLSBOROUGH	Southwest	12/03/2012		0.60
BF561101000	BF561101001	Parcel 1	FORT PIERCE	ST. LUCIE	Southeast	11/29/2012		3.75
BF561101000	BF561101002	Parcel 2	FORT PIERCE	ST. LUCIE	Southeast	11/29/2012	07/16/2013	0.69
BF561101000	BF561101003	Parcel 3	FORT PIERCE	ST. LUCIE	Southeast	11/29/2012	07/10/2013	0.41

**Special Notes:**

# Site Rehabilitation Completion Order with Conditions Issued

\* PRFBSR chose to voluntarily terminate BSRA and the BSRA was terminated in October by mutual consent

\*\* Please note, BSRA BF00101004 has been superseded by BSRAs BF500101005 and BF00101006. Please refer to the new BSRAs for detail regarding responsible parties, site boundaries, etc.

^ BSRA revoked for failure to comply.

<sup>1</sup> NR = Not Reported

BSRA = Brownfields Site Rehabilitation Agreement (Sites Under Remediation)

SRCO = Site Rehabilitation Completion Order ("No Further Action")

Area ID	Site ID	Site Name	City	County	District	BSRA Executed Date	SRCO Issue Date	Acreage <sup>1</sup>
BF050401000	BF050401001	Marc T, LLC Brownfield Site	COCOA	BREVARD	Central	11/19/2012	04/22/2013	0.59
BF291201000	BF291201001	Brandon Toyota Site	TAMPA	HILLSBOROUGH	Southwest	08/14/2012		17.99
BF501201000	BF501201001	Former Pike Utilities Brownfield Site	LAKE WORTH	PALM BEACH	Southeast	08/09/2012		9.79
BF591201000	BF591201001	Former M&M Auto Parts & Salvage	SANFORD	SEMINOLE	Central	07/30/2012		6.60
BF461101000	BF461101001	Former Happy Food Store #526	FORT WALTON BEACH	OKALOOSA	Northwest	07/13/2012		0.67
BF370002000	BF370002002	Former Tallahassee Coca Cola Bottling Plant	TALLAHASSEE	LEON	Northwest	05/24/2012		1.19
BF291102000	BF291102001	Former Sun City BP	SUN CITY CENTER	HILLSBOROUGH	Southwest	12/29/2011	06/17/2013	0.63
BF061103000	BF061103001	ZF Brownfield Site	MIRAMAR	BROWARD	Southeast	12/22/2011	12/10/2012 #	16.00
BF370002000	BF370002005	Former Ro-Mac Lumber & Supply Co. of Tallahassee	TALLAHASSEE	LEON	Northwest	12/22/2011	10/02/2013 #	2.81
BF291001000	BF291001002	International Ship Repair	TAMPA	HILLSBOROUGH	Southwest	12/19/2011		13.33
BF481101000	BF481101001	Former Woodbury Chemical Site	ORLANDO	ORANGE	Central	12/16/2011		2.33
BF411101000	BF411101001	Widewaters Bradenton, LLC - Manatee River Brownfield Site	BRADENTON	MANATEE	Southwest	12/09/2011	01/23/2014 #	0.85
BF130601000	BF130601001	Medley Development Site	MEDLEY	MIAMI-DADE	Southeast	10/13/2011		9.00
BF480401000	BF480401005	Steel House Brownfield Site	ORLANDO	ORANGE	Central	07/15/2011		5.00
BF291002000	BF291002001	Former Stock Building Supply/McGinnis Lumber Yard	PLANT CITY	HILLSBOROUGH	Southwest	06/10/2011		5.42
BF291002000	BF291002002	Gro-Mor Fertilizer Plant	PLANT CITY	HILLSBOROUGH	Southwest	06/10/2011		1.26
BF291002000	BF291002003	Hydraulic Hose Site	PLANT CITY	HILLSBOROUGH	Southwest	06/10/2011		1.14
BF529701000	BF529701005	CarPro	CLEARWATER	PINELLAS	Southwest	04/21/2011		0.28

**Special Notes:**

# Site Rehabilitation Completion Order with Conditions Issued

\* PRFBSR chose to voluntarily terminate BSRA and the BSRA was terminated in October by mutual consent

\*\* Please note, BSRA BF00101004 has been superseded by BSRAs BF500101005 and BF00101006. Please refer to the new BSRAs for detail regarding responsible parties, site boundaries, etc.

^ BSRA revoked for failure to comply.

<sup>1</sup> NR = Not Reported

BSRA = Brownfields Site Rehabilitation Agreement (Sites Under Remediation)

SRCO = Site Rehabilitation Completion Order ("No Further Action")

Area ID	Site ID	Site Name	City	County	District	BSRA Executed Date	SRCO Issue Date	Acreage <sup>1</sup>
BF370002000	BF370002003	Salie Property	TALLAHASSEE	LEON	Northwest	12/29/2010	09/28/2012	4.30
BF370002000	BF370002004	CSX Parcel 1	TALLAHASSEE	LEON	Northwest	12/29/2010	03/14/2014 #	2.38
BF440701000	BF440701001	Old Baltuff Dump Site	MIDDLE TORCH KEY	MONROE	South	12/29/2010		17.77
BF291001000	BF291001001	Detsco	TAMPA	HILLSBOROUGH	Southwest	12/28/2010		7.71
BF411001000	BF411001001	Former Wellcraft Site	SARASOTA	MANATEE	Southwest	12/22/2010		22.33
BF290101000	BF290101004	Winner Metals	TAMPA	HILLSBOROUGH	Southwest	12/09/2010		42.00
BF069901000	BF069901001	Pompano Beach Replacement Library and Civic Campus A	POMPANO BEACH	BROWARD	Southeast	12/06/2010	12/29/2010	0.50
BF069901000	BF069901002	Pompano Beach Replacement Library and Civic Campus B	POMPANO BEACH	BROWARD	Southeast	12/06/2010	06/26/2012	0.75
BF160001000	BF160001010	North Point Brownfield Site	JACKSONVILLE	DUVAL	Northeast	07/29/2010		10.00
BF520801000	BF520801001	Dansville North Historic Landfill Site	LARGO	PINELLAS	Southwest	06/24/2010	01/13/2016 #	0.91
BF520801000	BF520801002	Dansville Central Historic Landfill Site	LARGO	PINELLAS	Southwest	06/24/2010	09/24/2015 #	0.68
BF520801000	BF520801003	Dansville South Historic Landfill Site	LARGO	PINELLAS	Southwest	06/24/2010	04/01/2015 #	0.95
BF500902000	BF500902001	Pahokee Plaza	PAHOKEE	PALM BEACH	Southeast	04/02/2010	11/01/2011	2.36
BF100501000	BF100501004	Former U.S. Logistics/NexGen Environmental Facility	GREEN COVE SPRINGS	CLAY	Northeast	12/30/2009		4.01
BF290901000	BF290901001	Lakewood Pointe	SEFFNER	HILLSBOROUGH	Southwest	12/30/2009		15.01
BF050802000	BF050802001	Mobility Scooter Center, Inc.	MELBOURNE	BREVARD	Central	12/22/2009		0.78
BF480401000	BF480401004	Future Dr. P. Phillips Orlando Performing Arts Center	ORLANDO	ORANGE	Central	12/22/2009	01/13/2011	3.51
BF640401000	BF640401002	Embry-Riddle Aeronautical University	DAYTONA BEACH	VOLUSIA	Central	12/22/2009	03/02/2010	77.00

**Special Notes:**

# Site Rehabilitation Completion Order with Conditions Issued

\* PRFBRS chose to voluntarily terminate BSRA and the BSRA was terminated in October by mutual consent

\*\* Please note, BSRA BF00101004 has been superseded by BSRAs BF500101005 and BF00101006. Please refer to the new BSRAs for detail regarding responsible parties, site boundaries, etc.

^ BSRA revoked for failure to comply.

<sup>1</sup> NR = Not Reported

BSRA = Brownfields Site Rehabilitation Agreement (Sites Under Remediation)

SRCO = Site Rehabilitation Completion Order ("No Further Action")

Area ID	Site ID	Site Name	City	County	District	BSRA Executed Date	SRCO Issue Date	Acreage <sup>1</sup>
BF160001000	BF160001009	Riverside Avenue Brownfield	JACKSONVILLE	DUVAL	Northeast	12/21/2009		7.06
BF110901000	BF110901001	Hubert's Welding and Repair Site	NAPLES	COLLIER	South	12/18/2009		0.62
BF480901000	BF480901001	Bonita Fountains Phase 2: ROCC	ORLANDO	ORANGE	Central	12/18/2009		44.77
BF420901000	BF420901001	Fluid Routing Solutions, Inc.	OCALA	MARION	Central	12/17/2009		35.00
BF160506000	BF160506001	Hughes Electrical Supply Site	JACKSONVILLE	DUVAL	Northeast	11/19/2009		1.20
BF640901000	BF640901001	RJS Investments of Central Florida, d/b/a Indian River Glass	NEW SMYRNA BEACH	VOLUSIA	Central	11/03/2009	10/13/2010	0.85
BF500302000	BF500302001	Northwood Anchor Site	WEST PALM BEACH	PALM BEACH	Southeast	09/02/2009		3.02
BF290401000	BF290401001	The Place at Channelside	TAMPA	HILLSBOROUGH	Southwest	08/07/2009		2.15
BF480805000	BF480805001	Orlando Commerce Park ROCC Site	ORLANDO	ORANGE	Central	12/30/2008		60.73
BF580801000	BF580801001	Eager Beaver Car Wash & John's Auto Care	VENICE	SARASOTA	Southwest	12/30/2008		0.50
BF590806000	BF590806001	Sandefur Site	SANFORD	SEMINOLE	Central	12/30/2008	04/24/2009	69.95
BF529901000	BF529901003	Wal-Mart St. Pete (C) Brownfields Site	SAINT PETERSBURG	PINELLAS	Southwest	12/29/2008	03/21/2014 #	10.18
BF290804000	BF290804001	Crosland-Varela Site	TAMPA	HILLSBOROUGH	Southwest	12/24/2008	10/14/2015 #	6.85
BF280601000	BF280601001	Ridgewood Auto Spa	SEBRING	HIGHLANDS	South	12/23/2008		0.36
BF290803000	BF290803001	EnviroFocus Technologies	TAMPA	HILLSBOROUGH	Southwest	12/22/2008		21.18
BF160803000	BF160803001	Jacksonville Raceway	JACKSONVILLE	DUVAL	Northeast	12/18/2008	09/03/2010 #	117.03
BF160804000	BF160804001	CLH-Jacksonville	NEPTUNE BEACH	DUVAL	Northeast	12/08/2008		1.27
BF640401000	BF640401001	Clyde Morris Former Landfill	DAYTONA BEACH	VOLUSIA	Central	12/08/2008		3.63
BF050801000	BF050801001	Casbah Properties, LLC Site	MELBOURNE	BREVARD	Central	10/23/2008	12/18/2008	0.32

**Special Notes:**

- # Site Rehabilitation Completion Order with Conditions Issued
- \* PRFBSR chose to voluntarily terminate BSRA and the BSRA was terminated in October by mutual consent
- \*\* Please note, BSRA BF00101004 has been superseded by BSRAs BF500101005 and BF00101006. Please refer to the new BSRAs for detail regarding responsible parties, site boundaries, etc.
- ^ BSRA revoked for failure to comply.

<sup>1</sup> NR = Not Reported  
BSRA = Brownfields Site Rehabilitation Agreement (Sites Under Remediation)  
SRCO = Site Rehabilitation Completion Order ("No Further Action")



Area ID	Site ID	Site Name	City	County	District	BSRA Executed Date	SRCO Issue Date	Acreege <sup>1</sup>
BF290802000	BF290802002	SSC Tampa Kracker Road, LLC, Parcel B	GIBSONTON	HILLSBOROUGH	Southwest	09/02/2008		8.49
BF290802000	BF290802003	SSC 115 Tampa Kracker Road, Parcel C	GIBSONTON	HILLSBOROUGH	Southwest	09/02/2008		74.08
BF290702000	BF290702001	TECO Hookers Point		HILLSBOROUGH	Southwest	08/08/2008		31.88
BF290802000	BF290802001	Kracker Road aka Tampa Livestock	GIBSONTON	HILLSBOROUGH	Southwest	08/06/2008		29.73
BF500701000	BF500701001	Delray Beach CRA Brownfield Site	DELRAY BEACH	PALM BEACH	Southeast	02/01/2008	11/17/2014	2.42
BF290705000	BF290705001	Westshore Landings One	TAMPA	HILLSBOROUGH	Southwest	01/30/2008		3.70
BF560702000	BF560702001	1150 S. Federal Highway	FORT PIERCE	ST. LUCIE	Southeast	12/28/2007	11/29/2011	2.33
BF290704000	BF290704001	Tampa Tank and Welding Property	TAMPA	HILLSBOROUGH	Southwest	12/27/2007	09/14/2011	4.31
BF480401000	BF480401002	Former Spellman Engineering	ORLANDO	ORANGE	Central	12/27/2007		19.20
BF480401000	BF480401003	Former OUC Power Plant	ORLANDO	ORANGE	Central	12/27/2007		9.80
BF590702000	BF590702001	Former Central Florida Drum Facility	WINTER SPRINGS	SEMINOLE	Central	12/27/2007		6.45
BF590703000	BF590703001	Lowe's Store Fern Park	FERN PARK	SEMINOLE	Central	12/27/2007	03/31/2009	9.45
BF170701000	BF170701001	Former Runyan Shipyard, Bayou Chico	PENSACOLA	ESCAMBIA	Northwest	12/26/2007		13.80
BF560601000	BF560601001	Center Road	FORT PIERCE	ST. LUCIE	Southeast	12/26/2007		56.62
BF100501000	BF100501001	GCS Downtown Phase I, Parcel A	GREEN COVE SPRINGS	CLAY	Northeast	12/24/2007	02/15/2010 #	2.15
BF100501000	BF100501002	GCS Downtown Phase I, Parcel B	GREEN COVE SPRINGS	CLAY	Northeast	12/24/2007		1.74
BF100501000	BF100501003	GCS Downtown Phase I, Parcel C	GREEN COVE SPRINGS	CLAY	Northeast	12/24/2007	06/21/2013	1.75
BF170502000	BF170502001	Mosquito Control Facility	PENSACOLA	ESCAMBIA	Northwest	12/24/2007		1.00
BF170504000	BF170504001	Century Florida Site	CENTURY	ESCAMBIA	Northwest	12/20/2007	06/26/2009 #	37.00
BF290703000	BF290703001	Tampa International Center Brownfield Site	TAMPA	HILLSBOROUGH	Southwest	12/20/2007	06/12/2009 #	29.36

**Special Notes:**

# Site Rehabilitation Completion Order with Conditions Issued

\* PRFBRS chose to voluntarily terminate BSRA and the BSRA was terminated in October by mutual consent

\*\* Please note, BSRA BF00101004 has been superseded by BSRAs BF500101005 and BF00101006. Please refer to the new BSRAs for detail regarding responsible parties, site boundaries, etc.

^ BSRA revoked for failure to comply.

<sup>1</sup> NR = Not Reported

BSRA = Brownfields Site Rehabilitation Agreement (Sites Under Remediation)

SRCO = Site Rehabilitation Completion Order ("No Further Action")

Area ID	Site ID	Site Name	City	County	District	BSRA Executed Date	SRCO Issue Date	Acreage <sup>1</sup>
BF050701000	BF050701001	Manatee Point	MELBOURNE	BREVARD	Central	12/19/2007	11/01/2012	0.48
BF480704000	BF480704001	Baratta ROCC Site	APOPKA	ORANGE	Central	12/19/2007	05/30/2008	3.05
BF580302000	BF580302003	BKOP1	SARASOTA	SARASOTA	Southwest	12/14/2007		48.94
BF640701000	BF640701001	William Lofts	DAYTONA BEACH	VOLUSIA	Central	11/21/2007	05/05/2014	3.70
BF480401000	BF480401001	Orlando Events Center	ORLANDO	ORANGE	Central	09/05/2007		8.91
BF590701000	BF590701001	Former Microvia Facility	CASSELBERRY	SEMINOLE	Central	08/06/2007		8.39
BF160001000	BF160001008	Keystone/Wigmore Street	JACKSONVILLE	DUVAL	Northeast	07/11/2007		70.00
BF160001000	BF160001006	Hogan's Creek Site, Parcel 1A	JACKSONVILLE	DUVAL	Northeast	06/19/2007		3.18
BF160001000	BF160001007	Hogan's Creek Site, Parcel 1B	JACKSONVILLE	DUVAL	Northeast	06/19/2007		2.27
BF360501000	BF360501001	Garden Street Iron & Metal, Inc.	FORT MYERS	LEE	South	05/29/2007		9.86
BF160001000	BF160001005	JM Family Enterprises	JACKSONVILLE	DUVAL	Northeast	12/27/2006	11/26/2007	3.94
BF290604000	BF290604001	Waters Center Brownfield Site	TAMPA	HILLSBOROUGH	Southwest	12/27/2006	05/27/2010 #	18.88
BF540501000	BF540501001	Bill Ding Avenue Brownfield Site	PALATKA	PUTNAM	Northeast	12/27/2006	01/29/2014 #	8.34
BF180601000	BF180601001	Bunnell Industrial/Former Rayonier Plant Site	BUNNELL	FLAGLER	Northeast	12/21/2006		43.69
BF290606000	BF290606001	Former Tampa Armature Works Site	TAMPA	HILLSBOROUGH	Southwest	12/20/2006		4.27
BF290607000	BF290607001	Avion Park at Westshore Site	TAMPA	HILLSBOROUGH	Southwest	12/20/2006	10/13/2010	18.89
BF360301000	BF360301001	Eastwood Village Brownfield Site	FORT MYERS	LEE	South	12/19/2006		608.45
BF370601000	BF370601001	Sunland Hospital Parcel I	TALLAHASSEE	LEON	Northwest	12/12/2006	12/22/2006	5.18
BF550601000	BF550601001	Former Ponce de Leon Golf Course	ST AUGUSTINE	ST. JOHNS	Northeast	12/11/2006		284.00

#### Special Notes:

# Site Rehabilitation Completion Order with Conditions Issued

\* PRFBRS chose to voluntarily terminate BSRA and the BSRA was terminated in October by mutual consent

\*\* Please note, BSRA BF00101004 has been superseded by BSRAs BF500101005 and BF00101006. Please refer to the new BSRAs for detail regarding responsible parties, site boundaries, etc.

^ BSRA revoked for failure to comply.

<sup>1</sup> NR = Not Reported

BSRA = Brownfields Site Rehabilitation Agreement (Sites Under Remediation)

SRCO = Site Rehabilitation Completion Order ("No Further Action")

Area ID	Site ID	Site Name	City	County	District	BSRA Executed Date	SRCO Issue Date	Acreage <sup>1</sup>
BF529901000	BF529901002	City of St. Petersburg/Former Atherton Oil	ST PETERSBURG	PINELLAS	Southwest	10/10/2006		0.83
BF290603000	BF290603001	Circle Tampa Venture I	TAMPA	HILLSBOROUGH	Southwest	09/20/2006	05/31/2007 #	28.00
BF360302000	BF360302001	2780 South Street	FORT MYERS	LEE	South	06/20/2006	04/23/2008	1.68
BF290602000	BF290602001	Former 43rd Street Bay Drum Site	TAMPA	HILLSBOROUGH	Southwest	05/03/2006		4.30
BF290302000	BF290302001	Gerdau Ameristeel Brownfield Site	TAMPA	HILLSBOROUGH	Southwest	04/10/2006		30.00
BF580302000	BF580302002	Lowes Crofut Parcel and Outparcel A Site	SARASOTA	SARASOTA	Southwest	02/27/2006		4.00
BF160501000	BF160501001	Wal-Mart Phillips Highway Brownfields Site	JACKSONVILLE	DUVAL	Northeast	12/21/2005		21.23
BF290503000	BF290503001	Channelside Holdings Site	TAMPA	HILLSBOROUGH	Southwest	12/20/2005		8.00
BF500101000	BF500101006	DR Palm Beach Residential Complex Brownfield Site	WEST PALM BEACH	PALM BEACH	Southeast	12/01/2005		14.11
BF290501000	BF290501001	W.T. Edwards Brownfields Site	TAMPA	HILLSBOROUGH	Southwest	11/29/2005	05/07/2008	26.00
BF580302000	BF580302001	Lowes DMB Parcel and Outparcels B&C Site	SARASOTA	SARASOTA	Southwest	11/15/2005	04/05/2013 #	19.00
BF050301000	BF050301001	KIP I, L.L.C. Brownfield Site	PALM BAY	BREVARD	Central	10/20/2005		33.00
BF500101000	BF500101005	DR Palm Beach Hotel Complex Brownfield Site	WEST PALM BEACH	PALM BEACH	Southeast	10/20/2005		1.50
BF139801000	BF139801005	McArthur Dairy 7th Avenue	MIAMI	MIAMI-DADE	Southeast	10/07/2005		5.20
BF529701000	BF529701004	Clearwater Automotive Site	CLEARWATER	PINELLAS	Southwest	09/26/2005	07/01/2009	3.00
BF130503000	BF130503001	Dedicated Transportation Corporaton HQs	MIAMI	MIAMI-DADE	Southeast	09/08/2005	^	1.66
BF290204000	BF290204001	Former Southern Mill Creek Products Site	TAMPA	HILLSBOROUGH	Southwest	07/25/2005		8.38
BF370002000	BF370002001	Tallahassee Residence Inn Brownfield Site	TALLAHASSEE	LEON	Northwest	07/14/2005	03/19/2007 #	2.26

**Special Notes:**

# Site Rehabilitation Completion Order with Conditions Issued

\* PRFBRS chose to voluntarily terminate BSRA and the BSRA was terminated in October by mutual consent

\*\* Please note, BSRA BF00101004 has been superseded by BSRAs BF500101005 and BF00101006. Please refer to the new BSRAs for detail regarding responsible parties, site boundaries, etc.

^ BSRA revoked for failure to comply.

<sup>1</sup> NR = Not Reported

BSRA = Brownfields Site Rehabilitation Agreement (Sites Under Remediation)

SRCO = Site Rehabilitation Completion Order ("No Further Action")

Area ID	Site ID	Site Name	City	County	District	BSRA Executed Date	SRCO Issue Date	Acreage <sup>1</sup>
BF520501000	BF520501001	Community Waterfront Park	ST PETERSBURG	PINELLAS	Southwest	05/19/2005	09/23/2010 #	1.93
BF139801000	BF139801004	Los Suenos Multifamily Apartments (Dreamers, LLC)	MIAMI	MIAMI-DADE	Southeast	12/20/2004		1.46
BF060401000	BF060401001	Harbour Cove Associates	HALLANDALE BEACH	BROWARD	Southeast	12/17/2004	05/06/2009 #	7.06
BF139904000	BF139904002	Corinthian Multifamily Apartments (Liberty City Holdings, LLC)	MIAMI	MIAMI-DADE	Southeast	12/17/2004		5.74
BF290304000	BF290304001	12th Street Operations Yard	TAMPA	HILLSBOROUGH	Southwest	12/10/2004	11/03/2011 #	9.66
BF139801000	BF139801003	Wagner Square (Former Civic Center)	MIAMI	MIAMI-DADE	Southeast	08/13/2004	10/07/2005	3.00
BF480201000	BF480201001	Former Gray Truck Line Property	WINTER GARDEN	ORANGE	Central	04/19/2004		5.00
BF060301000	BF060301001	Dania Motocross	DANIA BEACH	BROWARD	Southeast	04/12/2004	08/01/2006 #	12.00
BF170302000	BF170302001	Sunray Enterprises, Inc. (Keck)	PENSACOLA	ESCAMBIA	Northwest	03/17/2004	03/02/2006	1.00
BF290303000	BF290303001	Centro Asturiano Place	TAMPA	HILLSBOROUGH	Southwest	03/10/2004	09/01/2006	7.00
BF139904000	BF139904001	Siegel Gas and Oil Corp	MIAMI	MIAMI-DADE	Southeast	02/11/2004	05/17/2011	2.22
BF139801000	BF139801002	FEC Buena Vista	MIAMI	MIAMI-DADE	Southeast	12/18/2003		51.00
BF529901000	BF529901001	Peoples Gas System (Former TECO Complex)	ST PETERSBURG	PINELLAS	Southwest	12/16/2003		5.00
BF130301000	BF130301001	Beacon Lakes (AMB Codina)	MIAMI	MIAMI-DADE	Southeast	11/24/2003	05/09/2012	156.00
BF170201000	BF170201001	Pensacola Mainstreet, Inc.	PENSACOLA	ESCAMBIA	Northwest	10/03/2003	10/01/2010 #	3.00
BF290301000	BF290301001	Riverfront (Tampa Heights) Complex	TAMPA	HILLSBOROUGH	Southwest	10/01/2003	11/23/2005	12.00
BF160001000	BF160001004	Ford Assembly Redevelopment	JACKSONVILLE	DUVAL	Northeast	09/17/2003		23.00
BF529701000	BF529701003	Former Clearwater Sun Property	CLEARWATER	PINELLAS	Southwest	09/17/2003	01/18/2007 #	1.00

#### Special Notes:

# Site Rehabilitation Completion Order with Conditions Issued

\* PRFBSR chose to voluntarily terminate BSRA and the BSRA was terminated in October by mutual consent

\*\* Please note, BSRA BF00101004 has been superseded by BSRAs BF500101005 and BF00101006. Please refer to the new BSRAs for detail regarding responsible parties, site boundaries, etc.

^ BSRA revoked for failure to comply.

<sup>1</sup> NR = Not Reported

BSRA = Brownfields Site Rehabilitation Agreement (Sites Under Remediation)

SRCO = Site Rehabilitation Completion Order ("No Further Action")

Area ID	Site ID	Site Name	City	County	District	BSRA Executed Date	SRCO Issue Date	Acreage <sup>1</sup>
BF179901000	BF179901002	2500 North Palafox Street	PENSACOLA	ESCAMBIA	Northwest	07/25/2003	02/29/2012 #	0.75
BF060201000	BF060201001	McArthur Dairy Brownfield Site	LAUDERHILL	BROWARD	Southeast	06/11/2003		10.35
BF290101000	BF290101003	Tampa Bay Scrap Processors Site	TAMPA	HILLSBOROUGH	Southwest	05/09/2003		16.00
BF160001000	BF160001003	2100 Dennis Street Remediation Trust	JACKSONVILLE	DUVAL	Northeast	05/01/2003		1.00
BF130201000	BF130201001	Biscayne Commons Brownfields Site	NORTH MIAMI	MIAMI-DADE	Southeast	04/07/2003		12.00
BF160205000	BF160205001	4502 Sunbeam Road	JACKSONVILLE	DUVAL	Northeast	03/13/2003		225.00
BF160202000	BF160202001	Phillips Highway Site	JACKSONVILLE	DUVAL	Northeast	02/24/2003		43.00
BF230201000	BF230201001	Former-St. Joe Site Surface Impoundment	PORT ST JOE	GULF	Northwest	01/28/2003	07/09/2010 #	11.00
BF230201000	BF230201002	Former-Port St. Joe Kraft Papermill	PORT ST JOE	GULF	Northwest	01/27/2003	05/15/2013 #	125.00
BF160001000	BF160001002	The Shipyards	JACKSONVILLE	DUVAL	Northeast	12/31/2002		40.55
BF160201000	BF160201001	St. Johns Center Site	JACKSONVILLE	DUVAL	Northeast	12/31/2002		4.00
BF090201000	BF090201001	Inverness Wal-Mart Site	INVERNESS	CITRUS	Southwest	12/23/2002		40.00
BF010001000	BF010001002	Former-CSX Property	GAINESVILLE	ALACHUA	Northeast	11/14/2002		25.00
BF290202000	BF290202001	Wal-Mart Gunn Highway Site	TAMPA	HILLSBOROUGH	Southwest	11/07/2002	06/12/2009	28.00
BF530001000	BF530001001	Auburndale Wal-Mart	AUBURNDALE	POLK	Southwest	11/07/2002	11/12/2013 #	10.00
BF500101000	BF500101004	DR Lakes, Inc. Parcel II	WEST PALM BEACH	PALM BEACH	Southeast	08/30/2002	**	16.00
BF290101000	BF290101002	Tampa Bay Shipbuilding and Repair Company	TAMPA	HILLSBOROUGH	Southwest	07/31/2002		53.00
BF429903000	BF429903001	Former White's Meats Packing Facility	OCALA	MARION	Central	07/26/2002	10/23/2006	6.00
BF290002000	BF290002002	CSX Spur at Old Hopewell Road	TAMPA	HILLSBOROUGH	Southwest	07/22/2002		1.00

**Special Notes:**

# Site Rehabilitation Completion Order with Conditions Issued

\* PRFBSR chose to voluntarily terminate BSRA and the BSRA was terminated in October by mutual consent

\*\* Please note, BSRA BF00101004 has been superseded by BSRAs BF500101005 and BF00101006. Please refer to the new BSRAs for detail regarding responsible parties, site boundaries, etc.

^ BSRA revoked for failure to comply.

<sup>1</sup> NR = Not Reported

BSRA = Brownfields Site Rehabilitation Agreement (Sites Under Remediation)

SRCO = Site Rehabilitation Completion Order ("No Further Action")

Area ID	Site ID	Site Name	City	County	District	BSRA Executed Date	SRCO Issue Date	Acreage <sup>1</sup>
BF500101000	BF500101002	DR Lakes Multifamily Northside	WEST PALM BEACH	PALM BEACH	Southeast	07/08/2002	06/29/2015 #	13.00
BF500101000	BF500101003	CFC Multifamily Northwest	WEST PALM BEACH	PALM BEACH	Southeast	07/08/2002		45.00
BF160001000	BF160001001	Ware Family Realty, LLC	JACKSONVILLE	DUVAL	Northeast	06/03/2002	12/08/2003	1.00
BF290202000	BF290202001A	Wal-Mart Buckley-Shuler Parcel A	TAMPA	HILLSBOROUGH	Southwest	04/22/2002	05/15/2002	1.00
BF290202000	BF290202001B	Wal-Mart Buckley-Shuler Parcel B	TAMPA	HILLSBOROUGH	Southwest	04/22/2002	06/04/2002	1.00
BF290202000	BF290202001C	Wal-Mart Buckley-Shuler Parcel C	TAMPA	HILLSBOROUGH	Southwest	04/22/2002	11/23/2004	2.00
BF290202000	BF290202001D	Wal-Mart Buckley-Shuler Parcel D	TAMPA	HILLSBOROUGH	Southwest	04/22/2002	12/16/2002	2.00
BF290202000	BF290202001E	Wal-Mart Buckley-Shuler Parcel E	TAMPA	HILLSBOROUGH	Southwest	04/22/2002	07/22/2002	2.00
BF500101000	BF500101001	BrandsMart	WEST PALM BEACH	PALM BEACH	Southeast	12/27/2001	03/01/2016 #	17.00
BF290101000	BF290101001	Port Ybor	TAMPA	HILLSBOROUGH	Southwest	10/29/2001		59.00
BF179901000	BF179901001	Weatherford McIntyre Property	PENSACOLA	ESCAMBIA	Northwest	10/03/2001	07/01/2002 #	3.00
BF160101000	BF160101001	Southside Generating Station (SGS) Area	JACKSONVILLE	DUVAL	Northeast	08/01/2001		42.00
BF529701000	BF529701002	Dimmit Parcel B	CLEARWATER	PINELLAS	Southwest	07/31/2001	12/18/2009	3.00
BF170101000	BF170101001	Strategic Crossing Corp. CSX Property	PENSACOLA	ESCAMBIA	Northwest	06/07/2001	12/15/2006 #	1.00
BF369901000	BF369901001	City of Ft Myers Coal Gasification Site	FORT MYERS	LEE	South	03/09/2001	01/03/2011 #	7.00
BF010001000	BF010001001	Gainesville Regional Utilities/Poole Roofing Site	GAINESVILLE	ALACHUA	Northeast	01/29/2001		2.00
BF130001000	BF130001001	Potamkin Properties	MIAMI BEACH	MIAMI-DADE	Southeast	12/29/2000	03/14/2012 #	7.00
BF290002000	BF290002001	WRB @ Old Hopewell Road	TAMPA	HILLSBOROUGH	Southwest	12/28/2000		10.00
BF050001000	BF050001001	Village Green Shopping Center	ROCKLEDGE	BREVARD	Central	12/22/2000		10.00

#### Special Notes:

# Site Rehabilitation Completion Order with Conditions Issued

\* PRFBRS chose to voluntarily terminate BSRA and the BSRA was terminated in October by mutual consent

\*\* Please note, BSRA BF00101004 has been superseded by BSRAs BF500101005 and BF00101006. Please refer to the new BSRAs for detail regarding responsible parties, site boundaries, etc.

^ BSRA revoked for failure to comply.

<sup>1</sup> NR = Not Reported

BSRA = Brownfields Site Rehabilitation Agreement (Sites Under Remediation)

SRCO = Site Rehabilitation Completion Order ("No Further Action")

Area ID	Site ID	Site Name	City	County	District	BSRA Executed Date	SRCO Issue Date	Acreage <sup>1</sup>
BF290001000	BF290001001	Robbins Manufacturing	TAMPA	HILLSBOROUGH	Southwest	08/28/2000	08/14/2002 #	40.00
BF529701000	BF529701001	Community Health Center	CLEARWATER	PINELLAS	Southwest	01/18/2000	07/28/2000	1.00
BF489901000	BF489901001	Sunterra Site	ORLANDO	ORANGE	Central	06/29/1999	11/05/1999	14.00
BF139801000	BF139801001	Wynwood Site	MIAMI	MIAMI-DADE	Southeast	07/27/1998	*	4.95
<b>Total Approximate Acreage:</b>								<b>5,020.52</b>

**Special Notes:**

- # Site Rehabilitation Completion Order with Conditions Issued
- \* PRFBSR chose to voluntarily terminate BSRA and the BSRA was terminated in October by mutual consent
- \*\* Please note, BSRA BF00101004 has been superseded by BSRAs BF500101005 and BF00101006. Please refer to the new BSRAs for detail regarding responsible parties, site boundaries, etc.
- ^ BSRA revoked for failure to comply.

<sup>1</sup> NR = Not Reported  
BSRA = Brownfields Site Rehabilitation Agreement (Sites Under Remediation)  
SRCO = Site Rehabilitation Completion Order ("No Further Action")



**APPENDIX C**  
**Success Stories**

## BROWNFIELDS REDEVELOPMENT SUCCESS STORIES

The effectiveness of the Florida Brownfields Redevelopment Program (Program) is demonstrated through the cleanup and reuse of previously underused properties. The following projects benefitted from the Program. Expanded summaries are provided for projects that achieved closure since July 1, 2015. Projects completed in earlier years are summarized in the table that follows.



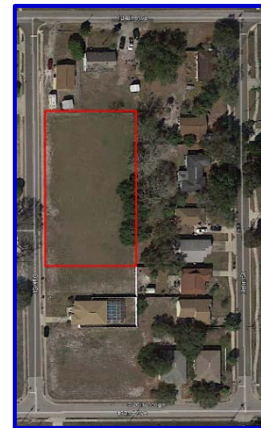
### Country Club Crossing and The Greens at Country

**Location:** DeLand  
**Historical Use:** Golf Course  
**Contaminants:** Dieldrin  
**Reuse:** Commercial and residential

The Country Club Corners and The Greens at Country Club Brownfield Site began with the cleanup and redevelopment of the former DeLand Country Club in DeLand, Florida. The approximately 105-acre site was abandoned after the golf course closed in 2012. Soil and groundwater contamination found at the site was attributed to historic turf management operations on the property. TKG DeLand, LLC purchased the property and entered the Florida Brownfields Redevelopment Program in 2013 along with its redevelopment affiliate Tailwinds DeLand CC, LLC. The BSRA was signed on December 23, 2013. Assessment and cleanup was completed in less than two years and DEP issued a Site Rehabilitation Completion Order on November 6, 2015. TKG and Tailwinds have redeveloped the site into a mixed-use project featuring a Publix-anchored shopping center, a 155 single family home community (now known as Bentley Greens), a proposed office and assisted living facility, and open space. The total capital investment in the project to date has exceeded \$25 million and the project has already resulted in the creation of more than 100 new jobs.

### Dansville North

**Location:** Largo  
**Historical Use:** Borrow Pit  
**Contaminants:** Arsenic and PAHs  
**Reuse:** Ready for redevelopment



This property is part of a three-site (north, south, central) redevelopment in Pinellas County known as the Dansville Redevelopment. During Phase I conducted in 1997, debris was found on the site, including 55 gallon drums, paint containers, household garbage, automotive fuel tanks, tires, and C&D debris. Source removal was performed in 2011 and a groundwater monitoring program was conducted in 2012 to confirm groundwater had not been affected. Over 11,000 tons of debris and soil were removed, however due to budget issues, it was decided that a portion of the contaminated soils would be used as backfill. A restrictive covenant was recorded in January 2016 to limit exposure to the soil contaminants by restricting use of the property. A Conditional Site Rehabilitation Completion Order (SRCO) was issued the same month. The property is currently vacant.



**Dansville Central**

**Location:** Largo  
**Historical Use:** Borrow Pit  
**Contaminants:** BAP and Dieldrin  
**Reuse:** Ready for redevelopment

Also part of the Dansville Redevelopment in Pinellas County, the Dansville Central property contained numerous types of solid waste. A Phase II site assessment in 2003 revealed soil contamination in the unsaturated zone, including arsenic, lead, benzo(a)pyrene (BAP), and dieldrin. A site assessment followed in June 2011 and confirmed the presence of dieldrin and BaPs above soil cleanup target levels (SCTLs). However, arsenic and lead were not detected. The groundwater was not impacted at the site. The County chose to conditionally close the Dansville Central site by restricting future land use because of the soil contamination. A Restrictive Covenant was recorded and a Conditional SRCO was issued in September 2015.

**Bartow Cigar Factory**

**Location:** Bartow  
**Historical Use:** Cigar Factory  
**Contaminants:** Arsenic  
**Reuse:** Building and property ready for re-use



The Bartow cigar factory was constructed in 1925 for the Cuban American Cigar Corp. Phase I and Phase II assessments were completed in June 2011 and August 2011, respectively. The Phase II assessment identified arsenic in soils at concentrations above the SCTLs. After reviewing groundwater characteristics, the Department determined that groundwater sampling was not necessary. A Source Removal Completion Report in October 2015 indicated that 16.4 tons of soil were removed and samples taken from the perimeter of the excavation identified no arsenic above laboratory detection limits. An Unconditional SRCO was issued in December 2015.



**Mahogany Mill Boat Ramp**

**Location:** Pensacola  
**Historical Use:** Saw Mill  
**Contaminants:** Benzene, PCP, TRPH, BaPs  
**Reuse:** Public boat ramp and public park

The Mahogany Mill boat ramp park was once part of the Weis-Fricker Mahogany Company saw mill. The mill processed mahogany logs harvested from Central America at an average of 400,000 board feet per month and was reportedly the largest mahogany mill in the country. Escambia County purchased the property in 2009 and it remained vacant until 2013. A July 2013 site assessment found volatile and semi-volatile organic compounds and petroleum contaminants in soils above cleanup target levels. A Remedial Action Plan was approved in November 2013 and a BSRA was executed in December 2013.

The construction completion report documented the use of a geosynthetic cap and protective soil layer to control exposure and contaminant migration. Environmental features of the project include pervious pavement for the parking area, which prevents stormwater runoff into nearby waters. The site now contains a multi-lane public boat ramp, public gazebo, parking area, sidewalks, drainage and sewer improvements, and a 2.32-acre marine park. The project was constructed using National Resource Damage Assessment funding through DEP.

**ERAU Former Bus Depot Brownfield Site**

**Location:** Daytona Beach  
**Historical Use:** Bus Maintenance Depot  
**Contaminants:** Petroleum, Arsenic, Landfill Debris  
**Reuse:** Research park



Embry-Riddle Aeronautical University (ERAU/University) acquired the former Volusia County School District bus depot and maintenance area property in 2014. Petroleum contaminants associated with the bus operations were found in site soils and groundwater. A BSRA was executed in October 2014. Excavation and offsite disposal of soil and solid waste materials with documented contamination above residential direct-exposure soil cleanup target levels (CTLs) was completed in March 2015. A total of 3,448.27 tons of impacted material was removed from the site. DEP issued a Site Rehabilitation Completion Order (SRCO) without Conditions in July 2015. The redevelopment project, called ERAU Research Park West, is slated to include a university research facility, a state-of-the-art subsonic wind tunnel facility, multiple airplane hangars, and a runway extension from the Daytona Beach International Airport. The 50,000-square-foot, \$26 million building features 10,000 square feet of flex lease space to meet the needs of future tenants.

**Former Tire Kingdom Brownfield Site**

**Location:** Daytona Beach  
**Historical Use:** Auto Repair Facility  
**Contaminants:** Petroleum Hydrocarbons  
**Reuse:** Commercial / Restaurant



The subject site is a former single-story tire retail and vehicle service business. The building was equipped with seven vehicle bays and an office area. Each vehicle bay contained an underground hydraulic lift. A Brownfield Site Rehabilitation Agreement was signed and executed for the property in December 2014. All seven lifts were removed from the site in June 2015. After the lifts were removed, no soil or groundwater contamination was found to be present. A SRCO was issued for the site in December 2015. The site is now being redeveloped into a 4000 square foot Kentucky Fried Chicken restaurant with 40-45 employees.



**BrandsMart**

**Location:** West Palm Beach  
**Historical Use:** Golf Course  
**Contaminants:** Arsenic  
**Reuse:** Commercial

From 1965-1998 the property operated as part of the 96-acre Palm Beach Lakes Golf Course. Soil and groundwater on the property were found to contain high levels of arsenic due to more than 30 years of insecticide, fungicide, and herbicide application. The city of West Palm Beach designated the abandoned golf course as a Brownfield area in July 2001. A partial restrictive covenant was recorded in the Palm Beach County Clerk’s office in Dec 2001 to legally cap the site with an impervious layer (asphalt parking lot/ bldg. pad) to prevent soil contaminants from leaching into groundwater. The 17.7-acre BrandsMart site was completed in 2002. After many years of groundwater monitoring, arsenic levels reached cleanup target levels and the Department issued a SRCO with conditions in March 2016.

**DR Lakes Multifamily Northside**

**Location:** West Palm Beach  
**Historical Use:** Golf Course  
**Contaminants:** Arsenic  
**Reuse:** Multi-family Residential



Also part of the former 96-acre Palm Beach Lakes Golf Course, the DR Lakes Northside site is a 13.5-acre parcel that was developed into a 264-unit affordable housing project. The redevelopment of the property was completed in 2005. After the recession, natural attenuation monitoring commenced. Groundwater contaminants were found to be below cleanup target levels in the summer of 2015 and a conditional SRCO was issued in September 2015. The site was closed with a restrictive covenant that documents an engineered cap to prevent soil contaminants from leaching into the groundwater. The covenant also restrict the use of groundwater at the site.

Projects completed prior to July 1, 2015, are presented in the following table. Expanded summaries for each project can be found at:  
[http://www.dep.state.fl.us/waste/quick\\_topics/publications/wc/brownfields/AnnualReport/2016/Success-Stories-2016.pdf](http://www.dep.state.fl.us/waste/quick_topics/publications/wc/brownfields/AnnualReport/2016/Success-Stories-2016.pdf).



SITE	CITY	CONTAMINANTS	SUMMARY
<b>BREVARD</b>			
Former Steve's Cycles	Cocoa	Petroleum Hydrocarbons	Previously, the property functioned as a transmission repair/fuel oil supply facility, then a motorcycle sales/repair shop. After cleanup, the site was redeveloped into a Family Dollar Store.
MarcT	Cocoa	Arsenic	Soil contamination was discovered and the owner entered into a BSRA in 2012. The property was cleaned up soon afterward. The site is being developed for a company that assembles and distributes backpacks for the U.S. Department of Defense.
Casbah Properties	Melbourne	Petroleum	Previously occupied by a gas station, the new owner had the storage tanks removed. It is now home to Matt's Restaurant, a popular dining destination in Melbourne.
Manatee Point	Melbourne	Petroleum Hydrocarbons	The Manatee Point site is a 1/2-acre former auto repair and gas station. Numerous previously-identified underground storage tanks were discovered and were removed. Cleanup was completed and a Starbucks Coffee Shop was constructed. A SRCO was issued in 2012.
<b>BROWARD</b>			
Harbour Cove	Hallandale	Petroleum, Ammonia, Arsenic	The property was originally a lake-fill site. An assessment was completed and a conditional closure order was issued in May 2009. It has been redeveloped into an apartment complex, with taxable value increasing from \$290,950 to \$6.6 million.
ZOM Foxcroft, LP	Miramar	Arsenic	A former 15.16-acre golf course, the site was found to contain groundwater and soil contamination. A restrictive covenant addressing groundwater use and a soil management strategy have led to the property being developed into a multi-story apartment complex with 100 percent unit lease rate.
Pompano Beach Library and Civic Campus A	Pompano Beach	Petroleum	During 2010, the City of Pompano Beach completed a site assessment and removed source materials. Cleanup was completed and an unconditional closure issued in December 2010. Future development includes a new government campus and public library.
Pompano Beach Library and Civic Campus B	Pompano Beach	Arsenic	Having had various past uses, the property contained soil and groundwater contamination. The soils were removed and restrictions put on groundwater use. Work was completed in spring 2012 and an unconditional closure was approved in June 2012.
Dania Motocross	Dania Beach	Metals	The Dania Motocross facility operated from 1995-2005. The developer entered into a BSRA with Broward County to address metals contamination in the groundwater. A conditional closure was issued in August 2006 and a warehouse complex is planned for the property.

SITE	CITY	CONTAMINANTS	SUMMARY
<b>CLAY</b>			
GCS Downtown Phase I, Parcel A	Green Cove Springs	Petroleum Constituents	Parcel A is the first site along the Highway 17 corridor to complete site rehabilitation under the Brownfields Program. The property is planned for residential and commercial land use.
GCS Downtown Phase I, Parcel C	Green Cove Springs	Petroleum Hydrocarbons	The property is a former automobile dealership. Two underground storage tanks along with associated contamination were cleaned up under a BSRA with DEP. A SRCO was issued in June 2013 and the property is ready for reuse.
<b>DUVAL</b>			
Former Jacksonville Raceway	Jacksonville	Petroleum Constituents, Old Tires, Debris	More than 52,000 tons of contaminated soils, 1,176 tons of debris and approximately 52,500 tires were removed from this former motor sports complex. A conditional SRCO was issued in September 2010 and the site is ready for reuse.
JM Family Enterprises	Jacksonville	Petroleum	Petroleum contamination was discovered in the soil at this former bulk petroleum storage facility. Cleanup was completed and the site was closed without conditions in 2007.
Ware Family Realty, LLC	Jacksonville	Chlorinated Solvents	A drycleaner previously occupied the property until purchased by a neighboring property owner. Cleanup was completed and the redevelopment has increased the property value from \$325,000 to \$1.2 million.
<b>ESCAMBIA</b>			
Century	Century	Volatile Organic Compounds	Groundwater and soil contamination from wood door manufacturing was discovered and cleanup was conducted. A conditional closure was issued in 2009 and the property is now vacant.
2500 North Palafox	Pensacola	Arsenic, Petroleum Hydrocarbons	The site has been used in a variety of ways for more than 50 years. Soil contamination was discovered and some of the soils removed. The new building and parking lot serve as engineering control for the contaminated soils left in place. It is now used as general office space.
Pensacola Main Street	Pensacola	Arsenic	Part of the Pensacola Bay waterfront area, the property was found to contain arsenic-contaminated soils. Contamination was addressed through the use of soil caps (parking lot and building). The property is now occupied by two businesses and has seen a significant increase in property value.
Sunray Enterprises, Inc.	Pensacola	Petroleum	Storage tanks were removed in the 1970s and contaminated soils were removed by the new owner. The property is currently being used as an automobile repair shop.

SITE	CITY	CONTAMINANTS	SUMMARY
Weatherford McIntyre Property	Pensacola	Arsenic	The property was formerly a construction and demolition debris landfill, and under the program, approximately 500 tons of arsenic contaminated soil were removed. As a result of \$724,000 in private investment funds, the property is now a marine parts supply facility and has created 25 new jobs.
Strategic Crossing Corp., CSX Property	Pensacola	Arsenic, Semi-Volatile Organic Compounds	Redeveloped to provide much needed downtown area parking, this former industrial railroad spur was entered into the program by the City of Pensacola. The total project resulted in \$8 million of private investment and the creation of 120 jobs.
<b>GULF</b>			
Former St. Joe Paper Mill	Port St. Joe	Polychlorinated Biphenyls, Metals, Volatile Organic Hydrocarbons	A former pulp and paper mill, Stone Container Corp. acquired and closed the mill in January 2000. Stone Container entered into a BSRA with DEP shortly after demolition began in 2002. The BSRA was transferred to St. Joe Company with final closeout being delayed due to the property transfer. A SRCO was issued in May 2013 and commercial redevelopment is planned.
Former St. Joe Surface Impoundment	Port St. Joe	Metals, Polycyclic Aromatic Hydrocarbons	This area received wastewater and waste materials from the paper-making process at the adjacent St. Joe paper mill. Contaminated soils were discovered, capped and a restrictive covenant was recorded on the deed. The area is part of a planned expansion of the Port.
<b>HILLSBOROUGH</b>			
Former Sun City BP	Sun City	Petroleum Hydrocarbons	This former gas station was in disrepair when purchased by the new owner. A BSRA was executed in December 2011, cleanup was completed and an SRCO issued in June 2013. The property was redeveloped and is now occupied by a bank that employs 10 full-time staff.
Tampa Tank	Tampa	Arsenic	The site had arsenic-impacted soil along with contamination from Chloride Battery, an off-site source, all addressed under the BSRA. A SRCO was issued in September 2011. The redevelopment by Padgett-Swann Machinery Company will provide 12 permanent jobs.
Avion Park at Westshore	Tampa	Petroleum	The property originally contained underground storage tanks, as well as being the site of a City of Tampa landfill. Cleanup was completed and a SRCO issued in October 2010. The 19-acre site is now home to three hotels, retail stores and 425,000 square feet of office space.
Tampa International Center - IKEA	Tampa	Petroleum Constituents, Arsenic, Aluminum, Iron	Originally developed and operated as a cannery from 1936-1981, this site was found to contain groundwater contamination. Source materials, as well as soils were removed and engineering and institutional controls were used. The 353,000 square foot IKEA store that now occupies the property created 500 construction jobs and 400 new, in-store jobs.
Former W.T. Edwards Property	Tampa	Petroleum	The W.T. Edwards Hospital closed in 1974 and was eventually purchased by the Hillsborough Community College in 2003. Soil contamination was found and was cleaned up soon after the purchase. The college also received an EPA revolving loan to assist in asbestos removal.



SITE	CITY	CONTAMINANTS	SUMMARY
Circle Tampa Ventures	Tampa	Metals, Solvents, Polychlorinated Biphenyls, Oil and Grease	The Ball Metal Plant was purchased by Circle Tampa Ventures, who soon entered the site into the Program. Cleanup was completed and a restrictive covenant prohibiting the use of groundwater was issued. The property is now home to 468 apartments and townhomes, which has increased the taxable value from \$3 million to \$45 million.
Centro Asturiano	Tampa	Petroleum, Incinerator Debris, Biohazards	The Centro Asturiano Hospital was condemned in 1996, and after site rehabilitation under the Program, is currently a 7-acre facility providing affordable housing to seniors.
Riverfront Complex	Tampa	Metals, Petroleum Compounds, Polychlorinated Biphenyls	Low-level concentrations of contaminants were found in the soils of this former dump site and were removed after the developer entered into a BSRA with DEP. The property is currently ready for redevelopment and is included in the Heights Community Redevelopment Area.
Wal-Mart Buckley Shuler	Tampa	Volatile and Semi-Volatile Organic Compounds	Wal-Mart purchased the property, which was once used for a paint factory and dairy farm, in 2001. Cleanup was completed in 2009 by the developer Buckley Shuler. Wal-Mart and the businesses on the out parcels now provide more than 400 jobs to the area.
Robbins Manufacturing	Tampa	Wood Treating, Pole Storage	The site's past uses include treatment of lumber and electric poles, as well as, storage of treated poles. Site rehabilitation removed contaminated soils from the area planned for residential redevelopment and moved them to the planned commercial area. Engineering controls and deed restrictions were used to cap and control exposure on the commercial site.
<b>LEE</b>			
City of Ft. Myers Coal Gasification Site	Ft. Myers	Petroleum Constituents	The Imaginarium Hands-On Museum and Aquarium sits on the site of a former coal gasification plant. During construction, contaminants were discovered, resulting in a soil cap and groundwater use restrictions being recorded on the deed in January 2011.
2780 South St.	Ft. Myers	Petroleum Constituents	From 1962-1993, the property was used as a truck servicing facility and subsequently used by a plastics manufacturer for five years. Cleanup addressed soil and groundwater contamination, and now the site is under contract to a landscape supply company.
<b>LEON</b>			
Former Ro-Mac Lumber	Tallahassee	Arsenic and Petroleum Hydrocarbons	Former Ro-Mac Lumber & Supply Co., is now home to 130 student housing units and 3,500 square feet of retail space. The building foundations, paved areas and other features of the \$25 million redevelopment were designed to act as engineering controls to eliminate exposure to contaminated soil.

SITE	CITY	CONTAMINANTS	SUMMARY
Former CSX Parcel 1, Gaines Street Corridor	Tallahassee	Arsenic	This area once served multiple commercial and industrial operations in the CSX railroad corridor. After finding contamination in soils, the City of Tallahassee entered into a BSRA, conducted site rehabilitation and recorded a deed restriction on the property. The area will now be used for parking in the Gaines Street Corridor redevelopment area.
Salie Property	Tallahassee	Arsenic, Polycyclic Aromatic Hydrocarbons, Chromium, Dieldrin	This 5.07 acres of land was acquired by the City of Tallahassee as part of its economic redevelopment efforts. Using EPA grant funds, DEP completed a source removal in 2006 and a BSRA was executed in 2010. An unconditional SRCO was issued in September 2012.
Tallahassee Marriott Residence Inn	Tallahassee	Petroleum, Dioxin	The property was formerly a bulk petroleum storage facility. The City of Tallahassee secured commitment for redevelopment, and following cleanup and implementing registered engineering and land use controls, DEP approved conditional closure in 2007. The property, previously valued at \$588,166, is now valued at \$10 million.
<b>MANATEE</b>			
Widewaters, LLC	Bradenton	Petroleum Hydrocarbons	Widewaters, LLC acquired the property in 2010 and began the cleanup and redevelopment process. Cleanup addressed underground storage tanks on the property. After a \$21 million renovation, the property was reopened as the Bradenton Hampton Inn and Suites.
<b>MARION</b>			
Former White's Meat Packing Facility	Ocala	Petroleum, Unknown Hazards	After the owner deeded the property to the City of Ocala, several unregistered underground storage tanks containing petroleum products and more than 30 55-gallon drums of unknown substances were removed. An investor was found and the property is now home to a multi-level office complex.
<b>MIAMI-DADE</b>			
St. Martin's Place	Miami	Polycyclic Aromatic Hydrocarbons	A SRCO was issued December 2014. There are restrictions on the use of groundwater based on contamination originating from the former Biscayne Chemical facility, located to the northeast. The site is being developed into multifamily, transit-oriented, affordable housing.
Beacon Lakes	Miami	Polycyclic Aromatic Hydrocarbons, Arsenic, Petroleum Hydrocarbons	A BSRA was executed for the site in 2003 following solid waste and source removal. A SRCO was issued in 2012. The redevelopment consists of a business park with warehouses, office buildings and retail space.
AR&J SOBE	Miami Beach	Petroleum Contaminants, Metals	The property, which previously served as a car dealership, auto repair facility and gas station is now an \$80 million, three level retail space with six levels of parking. A BSRA was executed in 2000 and a SRCO with conditions was issued in 2012.

SITE	CITY	CONTAMINANTS	SUMMARY
Siegel Gas and Oil Corp.	Miami	Petroleum Hydrocarbons, Polycyclic Aromatic Hydrocarbons, Volatile Organic Compounds	Soil and groundwater contamination was documented at the bulk storage tank facility during the removal of eight above-ground storage tanks. Approximately 2,500 tons of soil were removed and the exposed groundwater treated. Post-active remediation was completed in 2011 and the site was closed without conditions later that year.
Wagner Square	Miami	Incinerator Ash, Metals, Dioxins/Furans	The property was purchased by Wagner Square in 2004 and a BSRA was executed later that same year. Source removal consisted of 15,863 tons of soil and ash. Redevelopment began in 2008.
<b>ORANGE</b>			
400 North Orange	Orlando	Benzo(a)pyrene	The land was purchased by Rida Development Corp. in 2008. From spring 2013 to fall 2014, more than 21,000 tons of soil was removed. SRCOs were issued in July 2013 (North Parcel) and December 2014 (South Parcel). The property is slated for development along the SunRail corridor.
Mills Park	Orlando	Polycyclic Aromatic Hydrocarbons, Arsenic	This former 12-acre lumber yard is now occupied by retail, restaurant, medical, general office and residential space. In 2012, more than 11,000 tons of soil were removed while a BSRA was negotiated. An unconditional SRCO was issued in December 2012.
Future Dr. Phillips Orlando Performing Arts Center	Orlando	Polycyclic Aromatic Hydrocarbons	Contamination was discovered on the 3.1-acre site in 2008. The City of Orlando entered into a BSRA in 2009 and 7,197 tons of soil were removed. An unconditional closure was approved in 2011 and the \$274 million Performing Arts Center opened in 2014.
Baratta ROCC	Apopka	88,000 Buried Tires	After discovering buried tires during the early stages of site preparation, the developer signed a BSRA in 2007 and the tires were removed by the end of the year. DEP approved closure of the site in May 2008. The developer's plans include turning the property into a brightfield.
Sunterra Site	Orlando	Hydraulic Oils	Sunterra Corp. purchased the property, which at one time was a retail and automotive service center. Eight hydraulic lifts were removed along with the associated contaminated soils after the company entered into a BSRA with DEP.
<b>PALM BEACH</b>			
Delray Beach CRA Site	Delray Beach	Arsenic, Metals, Pesticides, PCBs	Homes were built over a former unregulated dump. Many homes experienced drastic settling in the past 20 years. Contamination was discovered in the soils and groundwater. Delray Beach Community Redevelopment Agency designated 2.4 acres a Brownfield Area in 2007 after purchasing the property. Removal of homes and source materials was completed in 2008. An unconditional SRCO was issued in November 2014.
Pahokee Properties	Pahokee	Arsenic	Contamination on the property was found to be the result of agricultural operations predating the retail development of the site in the 1980s. Soils were removed from 'hot spots' and a deed restriction instituted. The property currently awaits development.

SITE	CITY	CONTAMINANTS	SUMMARY
<b>PINELLAS</b>			
Dansville South	Largo	Arsenic and Benzo(a)pyrene	The Brownfield Area Designation was executed in August 2008 and a BSRA in June 2010. Over 6,600 tons of contaminated soil and debris were removed. A conditional SRCO was issued in April 2015. Contamination remains above residential SCTLs but below commercial SCTLs. Institutional controls are in place and the site is ready for commercial redevelopment.
Community Waterfront Park	St. Petersburg	Petroleum, Arsenic	The City of St. Petersburg transformed a former marine construction company site into a community waterfront park. Petroleum remediation included dewatering with groundwater treatment to support soil removal. A conditional site closure was completed in September 2010.
Dimmit Parcel B	Clearwater	Volatile and Semi-Volatile Organic Compounds, Metals	After many years of automotive-related businesses occupying the site, the City of Clearwater purchased the property in 1999. Contaminated soils were removed and groundwater cleanup was completed in 2009. DEP approved an unconditional closure for the property and it currently awaits development.
Clearwater Automotive	Clearwater	Metals, Polycyclic Aromatic Hydrocarbons	After hosting a variety of businesses, this site was operated as the Clearwater Automotive salvage yard from 1981-2005. The City of Clearwater purchased the property and a BSRA was executed. Cleanup was completed in 2009 and the property is ready for development.
Former Clearwater Sun Property	Clearwater	Arsenic, Petroleum	The Clearwater Sun operated a printing and publishing facility on the property. After assessment and remediation, a conditional closure was issued in 2007. The original building was left in place and renovated. The site now contains an industrial equipment supply company.
Community Health Center	Clearwater	Petroleum	After acquiring a rundown former gas station, the City of Clearwater assembled a community group with knowledge of the Program. Along with underground storage tanks and hydraulic lifts, 450 tons of soils were removed. A community health resource center now occupies the site.
<b>PUTNAM</b>			
Bill Ding Avenue	Palatka	Petroleum Hydrocarbons	After contamination was discovered by the property owner and a BSRA executed, remediation began. The remediation resulted in a significant reduction of the plume size to an area measuring 0.18 acres. Redevelopment is currently being planned.
<b>SARASOTA</b>			
Lowe's of NE Sarasota	Sarasota	Arsenic	Lowe's purchased the former sprayfield and discovered arsenic in the soils and groundwater. Groundwater assessment and cleanup continued after development was complete. A SRCO was issued in 2013. The development created approximately 175 jobs.

SITE	CITY	CONTAMINANTS	SUMMARY
<b>SEMINOLE</b>			
Lowe's of Fern Park	Fern Park	Petroleum Constituents	After the property was purchased by Lowe's, contamination associated with the former car maintenance facility was discovered. Two above-ground storage tanks, one underground storage tank, three hydraulic lifts and 73.2 tons of soils were removed. Completion of the project resulted in 125 jobs.
Sandefur Site	Sanford	Arsenic	Seminole County purchased the property for construction of the Midway Elementary School of the Arts. Contamination in site soils was discovered prior to development. The soils were excavated and the site was closed without conditions in 2009. The school opened in 2010.
<b>ST. LUCIE</b>			
Former H.D. King Power Plant, Parcels 2 and 3	Ft. Pierce	Benzo(a)pyrene, Benzo(a)anthracene, Arsenic, Chromium	This former power plant was comprised of three parcels. A separate BSRA was executed for each parcel due to three separate contamination sources. Parcels 2 and 3 both contained contaminated soils but not groundwater. Each parcel received an unconditional SRCO in July 2013.
1150 South Federal Highway	Ft. Pierce	Petroleum Contaminants	Groundwater contamination was found on the property, and after ownership changed, the new owner elected to perform voluntary cleanup. Source removal and groundwater remediation were conducted. The site received an unconditional closure in November 2011.
<b>VOLUSIA</b>			
Williams Square	Daytona Beach	Arsenic	The site consists of two parcels and both entered into a BSRA under separate owners in 2007. The soils were excavated and the groundwater was treated to help with remediation. A SRCO was issued in 2014 and the new mixed-use development is scheduled to open in 2015.
Indian River Glass	New Smyrna Beach	Petroleum	Indian River Glass was planning a business expansion when soil and groundwater contamination was discovered. A previously unknown underground storage tank was discovered near the edge of a dry retention pond. A BSRA was executed in 2009 and an unconditional closure approved in 2010 following cleanup.
Embry-Riddle Aeronautical University	Daytona Beach	Arsenic	Groundwater contamination was discovered on the 77.6-acre property, owned by Embry-Riddle Aeronautical University, following an assessment. The University entered into a BSRA with DEP to address the contamination and the site was closed without conditions in 2010.