



Florida Department of Environmental Protection

Marjory Stoneman Douglas Building
3900 Commonwealth Boulevard
Tallahassee, Florida 32399-3000

Rick Scott
Governor

Carlos Lopez-Cantera
Lt. Governor

Jonathan P. Steverson
Secretary

September 30, 2015

The Honorable Rick Scott
Governor, State of Florida
Plaza Level 05, The Capitol
400 South Monroe Street
Tallahassee, Florida 32399-0001

The Honorable Andy Gardiner
President, Florida Senate
Room 409, The Capitol
404 South Monroe Street
Tallahassee, Florida 32399-1100

The Honorable Steve Crisafulli
Speaker, Florida House of Representatives
Room 420, The Capitol
402 South Monroe Street
Tallahassee, Florida 32399-1300


Dear Governor Scott, President Gardiner and Speaker Crisafulli:

Pursuant to Section 380.512, Florida Statutes, I am pleased to submit the Florida Communities Trust Fiscal Year 2014-15 Annual Report. Florida Communities Trust provides Florida Forever funding through grants awarded to assist local governments and eligible non-profit organizations in acquiring community-based parks, open space, greenways and working waterfronts.

Since the program began in 1991, FCT has left an enduring legacy in communities throughout Florida. Partnerships between FCT and grant recipients improve the quality of life for Florida's residents through recreational opportunities, economic growth and revitalization, preserving historical and cultural resources and protecting natural resources.

If you have any questions regarding the report, please contact Mr. Gary Clark, Deputy Secretary for Land and Recreation, at (850) 245-2118.

Sincerely,



Jonathan P. Steverson
Secretary

Enclosure

Florida Communities Trust
Annual Report
Fiscal Year 2014-2015

Office of Operations
Florida Department of Environmental Protection
September 30, 2015

3900 Commonwealth Boulevard, MS 103
Tallahassee, Florida 32399-3000
www.dep.state.fl.us



Table of Contents

Letter from the Chair	3
Project Location Map	4
Florida Communities Trust.....	5
Mission and Accomplishments.....	5
Closings and Reimbursements.....	9
Acquired Projects for Fiscal Year 2014-2015	13
Acquired Projects by County 1991-2015	15
Summary of Financial Activities.....	22
Florida Communities Trust Board Members	23



Florida Department of Environmental Protection

Marjory Stoneman Douglas Building
3900 Commonwealth Boulevard
Tallahassee, Florida 32399-3000



September 30, 2015

Dear Floridians,

During the past 24 years, Florida Communities Trust (FCT) and its local partners have established a rich legacy of partnership and preservation marked by a diverse array of parks, greenways, urban green spaces, public beach access points and wildlife habitats. As perpetual stewards of 629 project sites throughout Florida, FCT works to continually enhance local communities and access for Floridians.

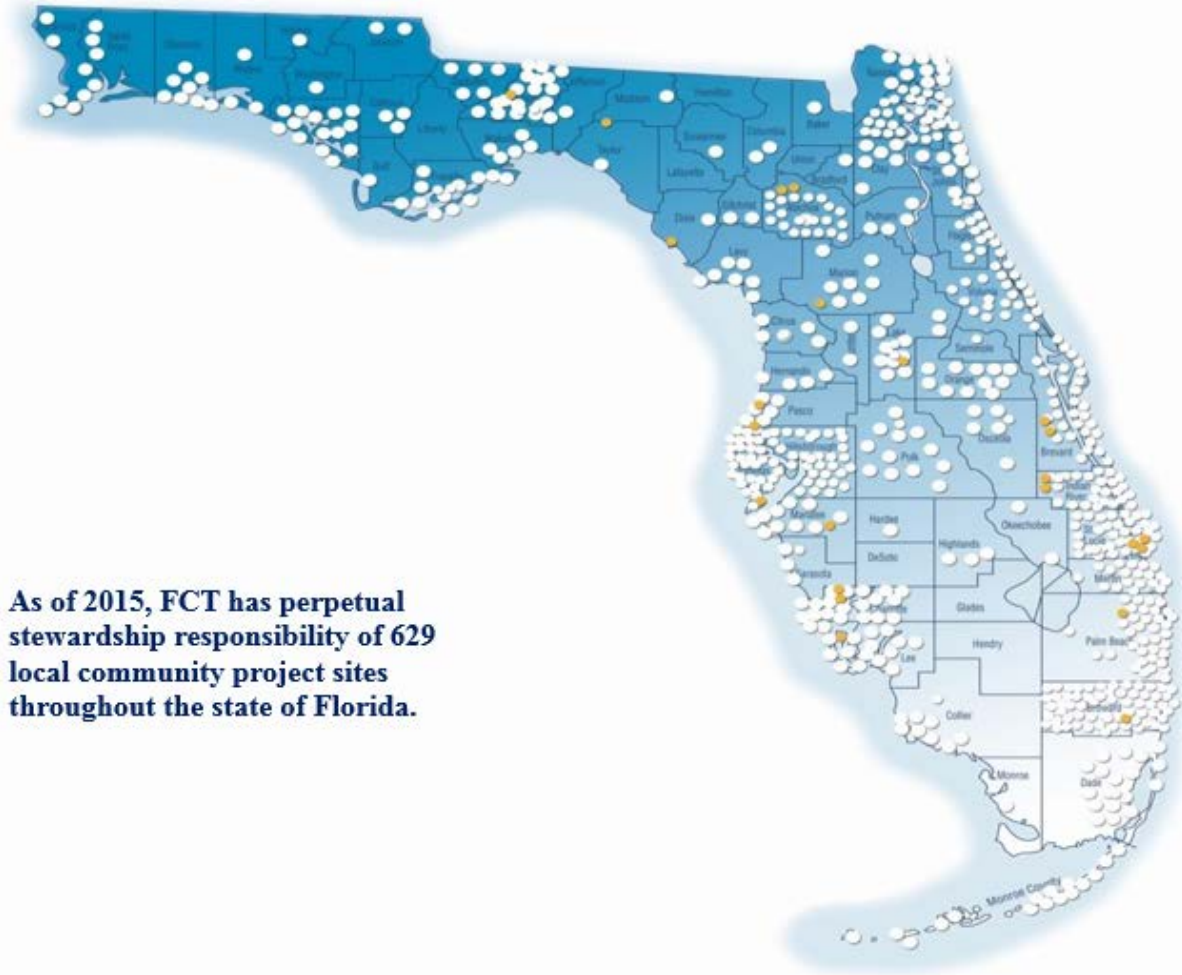
Florida Communities Trust facilitates local government and nonprofit investment in their community parks by incentivizing comprehensive planning. For example, we are proud of the work done this year through FCT's Stan Mayfield Working Waterfronts program which assisted Franklin County in the acquisition of the Eastpoint Working Waterfront. Details of this great property can be found on Page 11.

Florida Communities Trust complements many grant programs administered by the Florida Department of Environmental Protection including the Florida Recreation Development Assistance Program, Land and Water Conservation Fund and Recreation Trails Program. These programs help local communities leverage their resources and build interconnected community parks and preserves to better serve the public. Please take a few moments to review the enclosed annual report and learn about the FCT program's work throughout our great state.

Sincerely,

Gary Clark
Chair, Florida Communities Trust Governing Board
Deputy Secretary for Land and Recreation
Florida Department of Environmental Protection

FCT Parks and Open Space Program 1990-2015 Projects



Florida Communities Trust

Florida Communities Trust (FCT) is a multi-faceted program housed within the Florida Department of Environmental Protection's Office of Operations. FCT began in 1991 under Preservation 2000 as a funding resource for local communities to buy land for the protection of natural and cultural resources and the grant provision of recreational opportunities.



Over the last seven years, FCT has administered a second grant program dedicated to the protection of Florida's traditional working waterfronts, and has placed a greater emphasis on stewardship and management oversight of a diverse collection of local and regional parks and working waterfronts. Today, FCT administers the Parks and Open Space and Stan Mayfield Working Waterfronts Programs, two competitive grant programs that have provided funding to local governments and nonprofit organizations to assist them with their local land conservation efforts. Projects funded by FCT have fostered cultural and historical preservation, trail system development and public access to water. FCT has also furthered the outdoor recreation, natural resource protection and working waterfront needs identified in local government comprehensive plans.



FCT is governed by a five-member board that includes the Secretary of the Department of Environmental Protection (who serves as permanent chair) and four members of the public appointed by the Governor. Appointees to the Board include a former elected official of a metropolitan municipality, a former elected official of a county, a representative of an environmental nonprofit organization and a representative of the development industry.

Mission and Accomplishments

Meeting Community Challenges

Florida Communities Trust helps communities further the goals of their local government land use plans through land acquisition and innovative non-regulatory solutions to the challenges inherent in the land planning process. After a project has been acquired, FCT stewardship continues in perpetuity, providing guidance with park development and management oversight through annual stewardship reporting and site visits.





The Spirit of Partnership

FCT is dedicated to working with communities across the state to acquire lands for recreation, open spaces and working waterfronts, fostering responsible stewardship of those lands once they have been purchased. Land acquisition grant funds foster partnerships between FCT and local governments and/or nonprofit organizations. The projects often encourage local governments to work together through the acquisition, construction and maintenance phases. These joint efforts make it possible for communities to stretch state and local dollars further than they could on their own, distribute project management responsibilities and preserve locally significant lands.

Funding for the Trust

FCT is funded through the *Florida Forever* program, and it is the only state land acquisition program available exclusively for locally selected projects. Once a project has been purchased, the grant recipient, not the state, holds title to the lands. Each recipient is then responsible for land stewardship and implementing a formal management plan which must be approved by FCT. All FCT properties include a Board of Trustees of the Internal Improvement Trust Fund 'reverter' or 'spring' clause to protect the state's interests in perpetuity.

Promoting Economic Revitalization

Projects funded by FCT encourage ecotourism and often help to spur economic revitalization in communities. Consideration is given to projects located in areas with special economic needs, including Florida Main Street Districts, designated low-income communities, Rural Areas of Critical Economic Concern and designated urban infill areas.



Shingle Creek Regional Park was purchased in four FCT cycles with FCT providing funding of \$11,641,624.65 for 289 acres of the 1,000-acre regional park. The park follows the path of the historic headwaters of the Florida Everglades - Shingle Creek. Hiking and paddling trails traverse natural cypress dominated wetland and uplands of oak and pine while passing by several original pioneer structures built between the 1890s and 1930s. Site amenities also include trailhead parking, picnic areas, park benches, restrooms, canoe/kayak rentals, a pioneer village and playgrounds.

Preserving Florida's Cultural Gems

The majority of FCT's projects protect precious natural resources but many of them also have historical and cultural value. Special emphasis is placed on preserving historical resources and has helped Florida's communities save dozens of sites with significance at the local, state and national levels.



Pinecrest Gardens, previously known as **Parrot Jungle**, consists of more than 13 acres, with FCT contributing \$2,200,000 to the cost of acquisition. Listed on the National Register of Historic Places, Pinecrest Gardens is a venue for the arts, education and environmental conservation and preservation. On any given day one can catch an arts performance, tour the forested wetland, tropical hardwood hammock and cypress slough or take a class in horticulture, archeology and botany. The facilities include two amphitheatres used for community events, a brick walk, picnic and rest areas, playground, petting zoo and splash park. Pinecrest Gardens was awarded the Florida Humanities Council's Museum on Main Street grant to host Smithsonian's "The Way We Worked Exhibit" from September 5, 2015 – October 17, 2015. The City reopened the park to the public in March of 2003. Pinecrest Gardens attracts more than 150,000 visitors each year.

Promoting Education

Education is an important part of conserving resources. With that in mind, FCT places a priority on projects with educational aspects, awarding points during competitive selection to those projects providing for on-site interpretative signs, educational classes and even environmental education centers.



The Oakland Nature Preserve covers 128 acres of wetland and upland habitat stretching from the south shore of Lake Apopka to the West Orange Bicycle Trail. FCT provided funding of \$422,644.50 for 92.55 acres. Located 20 miles west of Orlando in the Town of Oakland, the Preserve has established partnerships with DEP, the University of Florida's Learning Tree for teacher training, Florida Fish and Wildlife Conservation's Florida Youth Conservation Centers Network and the Florida Naturalist Program. Wildlife viewing is good along the upland nature trails or half-mile long boardwalk that winds through forested wetlands and ends at a pavilion overlooking Lake Apopka. Bird watching, outdoor photography and nature study are popular activities at this Preserve which is dedicated to restoring and conserving the land while providing environmental education opportunities.

Land Management and Stewardship

FCT continues to place a priority on land management and park development, which complements DEP's Division of State Lands' role as Florida's lead division for environmental management and stewardship. Over the last 24 years, FCT has helped acquire approximately 605 local and regional parks in various stages of development and while title is held by the local communities that receive funding, the deeds contain restrictions giving FCT management oversight. As part of the acquisition process, FCT grant recipients are required to follow management plans and park development timelines, approved by FCT.

As part of the ongoing effort to confirm proper stewardship and management at FCT parks, staff conduct site visits throughout the year. These visits reinforce awareness of the land management and park development requirements. Grant recipients who have fully developed their parks and who have demonstrated a commitment to accomplishing successful outcomes are rewarded by a relaxed stewardship reporting requirement (from annual reporting to a five-year interval). Staff have been able to focus on assisting local communities to achieve full development of parks. FCT anticipates approximately 40 percent of current projects to complete 100 percent of their development grant criteria and progress to the five-year reporting cycle by September 2017.

2015 Florida Forever Grant Application Cycle

In FY 2014-15, staff continued their stewardship efforts to assist local communities with preserve land for FCT's 629 projects including parks, open space and working waterfronts with funding received in prior years.

Conclusion

Staff and Governing Board members will continue working with Florida's communities to strengthen relationships, encourage wise land management practices and assure all community responsibilities are met at each FCT-funded park, helping to preserve more land for Florida's future parks, open spaces and working waterfronts.



Closing and Reimbursements 2014-2015

EASTPOINT WORKING WATERFRONT

Recipient: Franklin County

Project Number: 08-004-WW1

FCT Grant: \$324,239.00

Local Match: \$0

Acres: 0.87

This property provides public access to the waterfront, space for parking vehicles that utilize the neighboring County boat ramp and docking space for small commercial seafood vessels to unload. The Eastpoint Working Waterfront project is located on Patton Drive in Eastpoint, Florida, within Franklin County, a designated Rural Area of Economic Concern. The property, containing approximately 0.87 acres, consists of two parcels. One parcel is located on the waterfront between Patton Drive and St. George Sound and includes approximately 150 feet of road frontage on the south side of Patton Drive. The second parcel is located between Patton Drive and U. S. Highway 98 and is approximately 124 feet wide.

Fifty years ago, the entire Eastpoint waterfront was crowded with seafood processing houses, providing a market for the commercial fishermen who worked on the bay. Over the years financial pressures and market forces have drastically reduced the number of seafood houses remaining on the waterfront. Many of the former processing house properties have been purchased by outside investors who are unaffiliated with the seafood industry, leading to a reduction of the ability of individual seafood workers to access the waterfront. Areas for them to launch their vessels and unload their catch became limited as much of the waterfront became owned by non-seafood related entities.

In 2009, Franklin County purchased the parcel at 344 Patton Drive, containing approximately 0.43 acres, located immediately to the east of the existing county boat ramp. The existing storm-damaged structure was torn down, an open pavilion was constructed with a grant from the Department of Agriculture and Consumer Services and the existing dock was repaired. This property is utilized for parking of vehicles that use the public boat ramp and for unloading small fishing vessels that tie up to the dock. In 2013, Franklin County purchased a parcel on the north side of Patton Drive at 347 Patton Drive. This parcel runs from Patton Drive to U.S. Highway 98 and is 124 feet wide and contains 0.44 acres of property. This property will be used for parking for the off-site public boat ramp across the street. Stan Mayfield Working Waterfronts grant funding became available and in 2014, FCT reimbursed the County for this pre-acquired public access site to serve the small commercial fishermen.



The end of the existing dock showing the oyster boats tied up. The tall concrete pilings in the right background are at the county boat ramp.



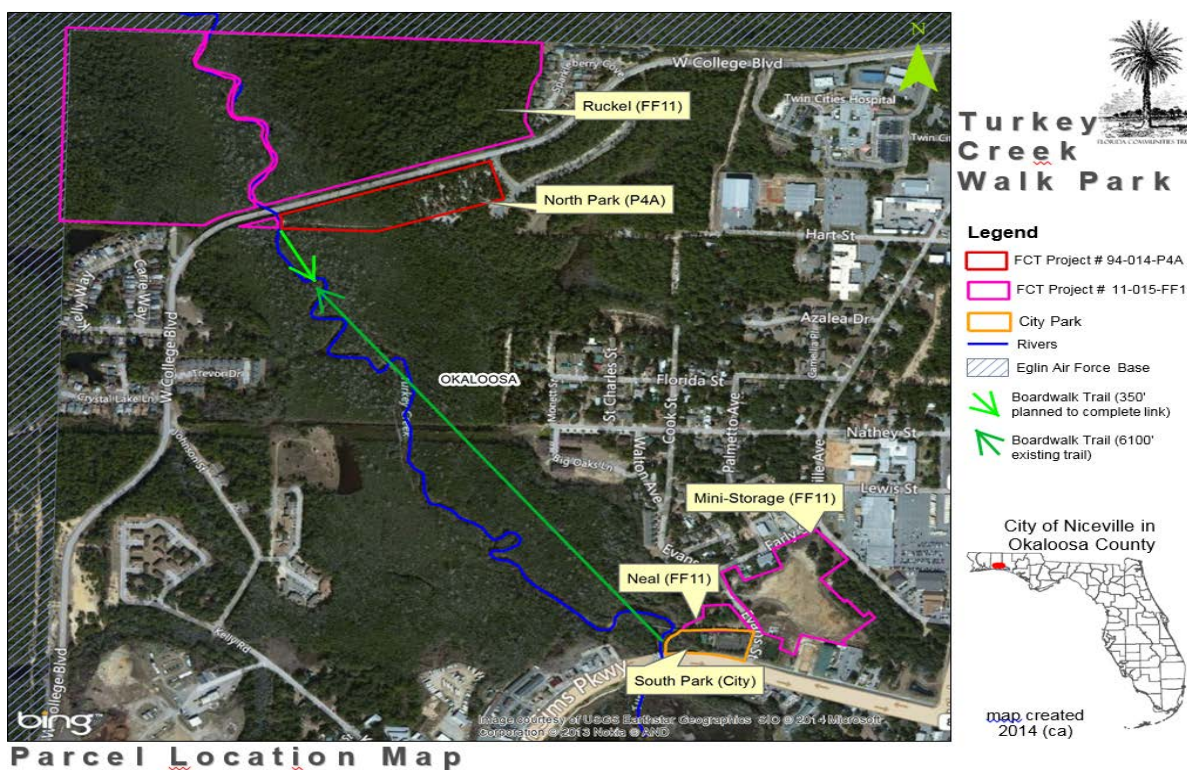
TURKEY CREEK WALK EXPANSION

Recipient: City of Niceville

Project #: 11-015-FF11

The FF11 Turkey Creek Walk Park acquisition project in total contains three distinctive parcel ownerships. FCT and the City of Niceville closed on the 67-acre priority acquisition parcel, previously owned by Ruckel, on June 30, 2014 (this closing information was reported in the 2013-14 Annual Report).

The two remaining parcels, 1.4 acre Neal and 8.6 acre Safe Mini Storage (SMS) parcels were closed on August 29, 2014. The Ruckel parcel is predominantly natural, with undisturbed wetlands along the creek which will be used to buffer Eglin and to provide passive enjoyment of the natural area through hiking. The Neal House and SMS parcels allow for a greater variety of recreational opportunities.



CITY

(NEAL HOUSE) PARCEL:

FCT Grant: \$149,741.25

Local Match: \$206,913.75

Acres: 1.44

The Neal parcel was pre-acquired by the City so this was a reimbursement. Neal is adjacent to Juniper Creek, and a tributary to Turkey Creek, where patrons will be able to access the creek via a kayak launch/recovery facility and an observation deck. The former residence on-site (the Neal House) will be renovated and utilized as an Educational Center with native upland landscaping planted around the facilities.

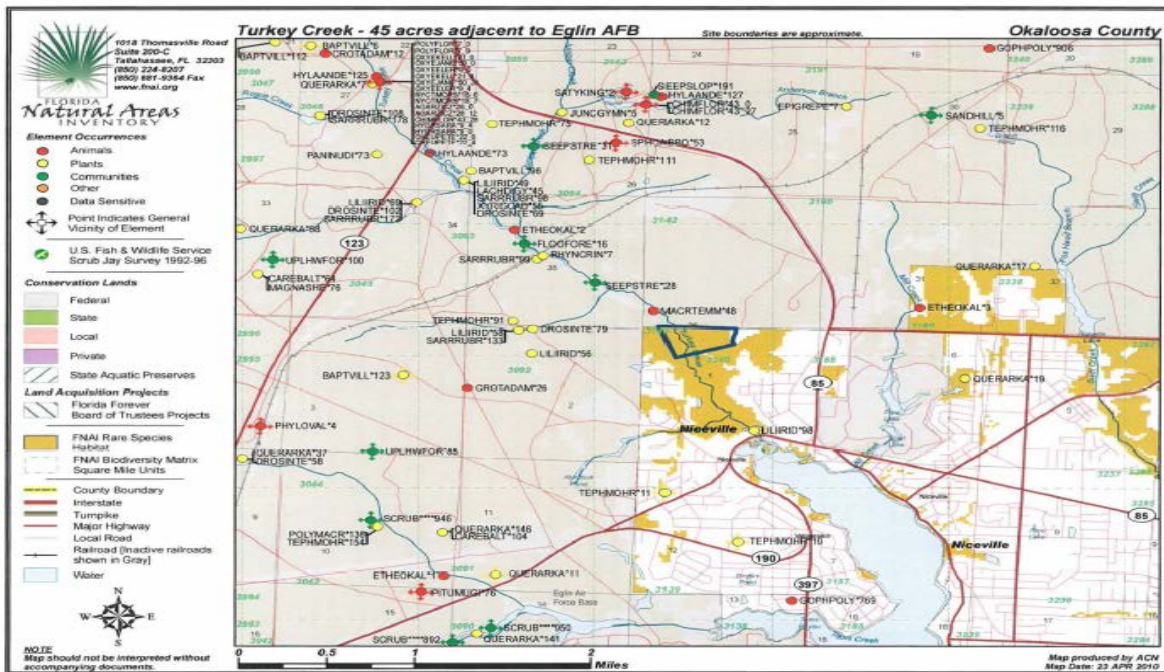
SAFE MINI STORAGE PARCEL:

FCT Grant: \$1,100,325.00

Local Match: \$366,775.00

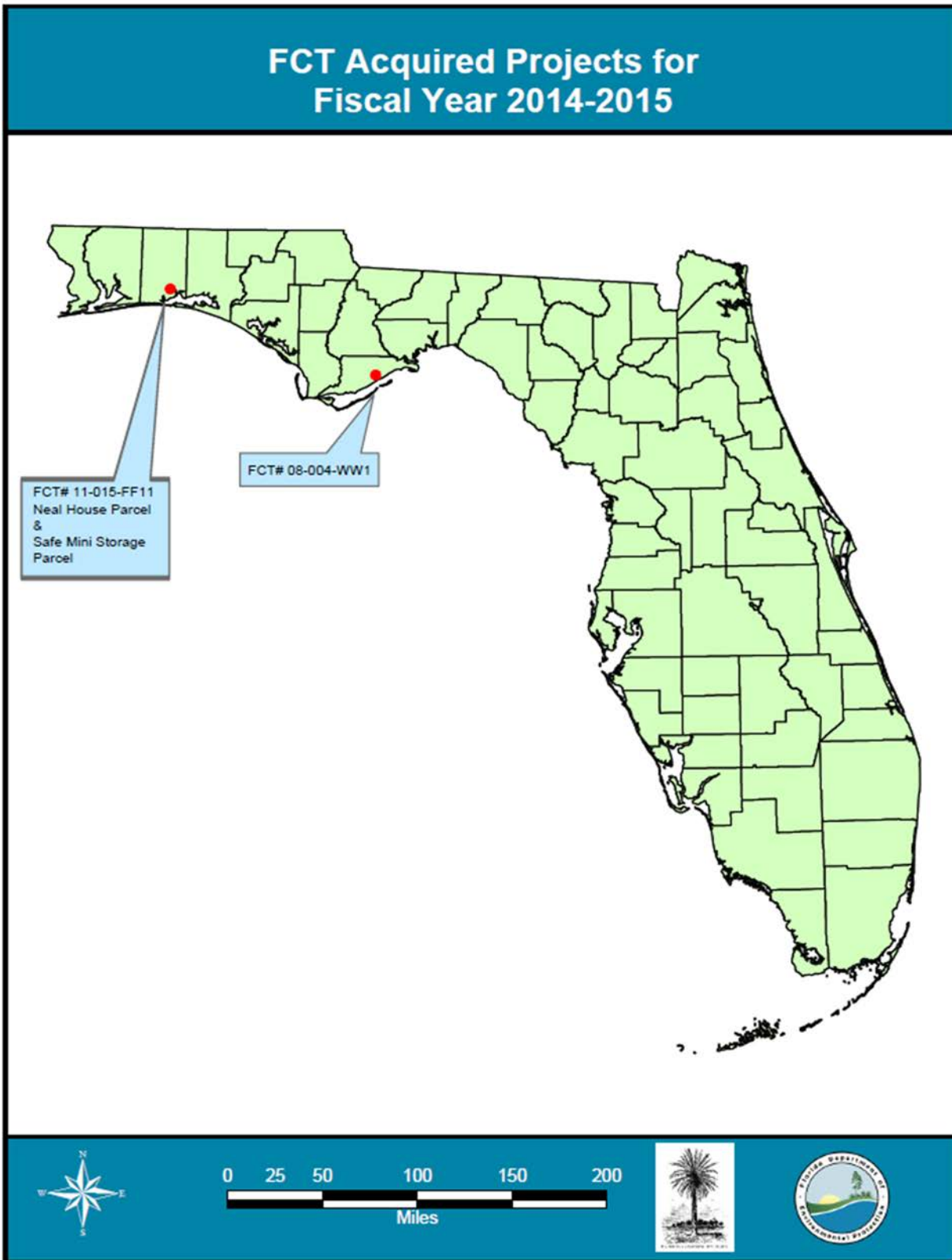
Acres: 8.61

The Safe Mini Storage parcel is an acquisition. The site has been highly disturbed and therefore will be the location of most of the structural improvements. The City intends to construct a 200 seat grassed lawn amphitheater, tennis courts and walkways with both native upland and wetland plantings for aesthetics and to create shade and to buffer the park from adjacent commercial development and the state road.



Acquired Projects for Fiscal Year 2014-2015

Project Number	Recipient Name	Project Name	Acres	FCT Grant Amount Delivered	Local Match	Total Project Cost	Date Closed or Reimbursed
08-004-WW1	Franklin County	Eastpoint Working Waterfront	.87	\$324,239.00	\$0.00	\$324,239.00	November 16, 2014
11-015-FF11 (Neal)	City of Niceville	Turkey Creek Walk Expansion	1.44	\$149,741.25	\$206,913.75	\$350,000.00	August 29, 2014
11-015-FF11 (SMS)	City of Niceville	Turkey Creek Walk Expansion	8.61	\$1,100,325.00	\$366,775.00	\$1,464,000.00	August 29, 2014
		TOTAL FY 2014-15	10.92	\$1,574,305.25	\$573,688.75	\$2,138,239.00	



ACQUIRED PROJECTS BY COUNTY 1991 - 2015

Project #	Project Name	Recipient	Project #	Project Name	Recipient
Alachua			Broward (cont.)		
91-049-	Hogtown Creek Greenway	City of Gainesville/Alachua County	95-055-	Island City Park Preserve	City of Wilton Manor
99-039-	Depot Junction	City Of Gainesville	96-014-	Sabal Pines Park	City of Coconut Creek
01-103-	Micanopy Native American Heritage Preserve	Town of Micanopy	96-058-	Sandy Ridge Sanctuary	City of Coral Springs
01-141-	Blues Creek Ravine and Fox Pond	Alachua Conservation Trust	99-036-	Academic and Outdoor Recreation Village	City of Pembroke Pines
01-149-	Berille Creek	City of Gainesville	99-073-	Carpenter's Sand Pine Preserve	City of Oakland Park
02-043-	Mill Creek Nature Preserve	Alachua County	00-025-	McNab Park Restoration	City of Tamarac
02-077-	Deval Neighborhood Stormwater Park	City of Gainesville	00-055-	Richardson Property	City of Wilton Manors/Broward
02-089-	San Felasco Conservation Corridor	City of Alachua	00-071-	Pembroke Pines Preservation Expansion	City of Pembroke Pines
05-024-	Paynes Prairie Sweetwater Addition	Alachua County	01-047-	Plantation Central Open Space	City of Plantation
04-071-	Tuscawilla Lake	Alachua Conservation Trust	01-074-	Pleasant Oceanside Preserve	City of Deerfield Beach
06-110-	Barr Hammock Ledwith Prairie	Alachua County/Conservation Trust	01-076-	Island City Park Addition	City of Wilton Manors
06-096-	Prairie Creek Basin	Alachua Conservation Trust	01-093-	Hollywood North Beach Addition	Broward County/City of
06-096-	Prairie Creek Basin	Alachua Conservation Trust	01-113-	Sheridan Street ESL Addition	Broward County
06-095-	Hogtown Creek Headwaters	City of Gainesville	01-118-	Miramar Pineland ESL Addition	Broward County/City of Miramar
07-115-	Phifer Flatwoods	Alachua County	02-002-	Central Broward Regional Park	Broward County/City of
07-114-	Levy Prairie	Alachua County	02-018-	Florence Hardy Park	City of Ft. Lauderdale
08-085-	Little Orange Creek	City of Hawthorne	02-021-	Last Cypress East	Broward County/City of
08-085-	Little Orange Creek - Blackwood Parcel	City of Hawthorne	02-022-	Last Cypress West	Broward County/City of
11-021-	Turkey Creek Hammock Preserve	Alachua County	02-049-	Southwest Nature and Recreational Park	City of Pembroke Pines
08-082-	Santa Fe Preserve	Alachua County	02-088-	Davie's Wetlands Restoration	Town of Davie
Baker			03-010-	Highlands Scrub Addition	Broward County
03-040-	St. Mary's Shoals	Baker County	03-011-	Helene Klein Pineland Preserve	Broward County
08-069-	St. Mary's Shoals - Phase II	Baker County	03-012-	Hillsboro Pineland ESL Addition	Broward County
08-069-	St. Mary's Shoals - Phase II - Rhoden Parcel	Baker County	03-014-	Mills Pond Addition	Broward County
Bay			03-022-	Country Estates Open Space and Fishing	Town of Southwest Ranches
92-021-	Thomas Drive Beach Access	Bay County	03-025-	Southwest Meadows Sanctuary	Town of Southwest Ranches
92-042-	Parker Tract	City of Mexico Beach	03-026-	Frontier Trails Conservation Area	Town of Southwest Ranches
93-027-	Oaks by the Bay	City of Panama City	03-043-	Tamarac Preservation Park	City of Tamarac
93-026-	Sweetbay Wetlands Preserve	City of Panama City	04-003-	Whispering Woods Park	Broward County/City of Coral
96-006-	Parker Environmental Exploratorium	City of Parker	04-007-	Hollywood North Beach Park Addition 2	Broward County
96-025-	Venetian Sunset Park	City of Panama City	04-008-	Little Fuzzy Bunny Cove	Broward County/City of Dania
01-153-	Coral Bean Addition Under the Oaks Park	City of Parker	04-011-	Hillsboro Pineland	Broward County
01-150-	Pier Park	City of Panama City Beach	04-002-	Vista View Regional Park Expansion	Broward County
Bradford			04-019-	Calusa Corners	Town of Southwest Ranches
Brevard			04-012-	Deerfield Beachfront Park	City of Deerfield Beach/Town of H
91-016-	Turkey Creek Scrub	Brevard County	04-010-	Sunny Lake Trailhead and Conservation Park	Town of Davie
95-019-	Manatee Sanctuary Park	City of Cape Canaveral	05-006-	West Creek Pineland Passage	Broward County
95-063-	Malabar Sanctuary Greenway I	Town of Malabar	04-009-	Coontie Hatchee Landing	Broward County/City of Ft. Lauder
95-064-	Ais Lookout Point	City of Palm Bay	05-002-	Broward County and City of Ft. Lauderdale	North Fork Riverwalk
95-079-	Wavecrest Park Extension	Town of Indian Lake	05-048-	Davie Farm Park	Town of Davie
96-019-	Malabar Sanctuary Greenway	Town of Malabar	06-011-	Central Broward Regional Park	Broward County
96-059-	Turkey Creek Blueway	City of Palm Bay	07-004-	Chapel Trail Nature Preserve	City of Pembroke Pines
96-060-	Castaway Point	City of Palm Bay	Calhoun		
96-062-	Banana River Park	City of Cape Canaveral	96-055-	Atkins Park Addition	Calhoun County
98-044-	Oceanfront Wildlife and Habitat Preserve	City of Satellite Beach	Charlotte		
98-076-	Melbourne Beach Loggerhead Park	Town of Melbourne Beach	92-012-	Tippecanoe Scrub	Charlotte County
99-044-	Oceanfront Preservation	City of Satellite Beach/Brevard	94-027-	Punta Gorda Nature Park	City of Punta Gorda
01-065-	Shoreside Park	Town of Palm Shores	94-020-	Amberjack Slough	Charlotte County
01-077-	Cocoa Conservation Area	City of Cocoa	96-008-	Charlotte Harbor Flatwoods Addition	Charlotte County
02-038-	Downtown Stormwater Park	City of Titusville	98-026-	Oyster Creek Park - Duwoody	Charlotte County
03-020-	Eau Gallie Square	City of Melbourne	98-025-	Sunrise Park	Charlotte County
03-035-	Cocoa Beach Maritime Hammock Preserve	City of Cocoa Beach	99-013-	Eaglewood Beach	Charlotte County
05-030-	Max K. Rodes Park	Brevard County	99-064-	San Casa	Charlotte County
06-055-	Molitor Property	City of Titusville	01-018-	Bayshore Linear Park	Charlotte County
06-001-	Anderson Stormwater Park	City of Rockledge	01-024-	Cedar Point Park	Charlotte County
06-080-	Thousand Islands Conservation Area	Brevard County	01-026-	South County Regional Park	Charlotte County
11-031-	Veteran's Memorial Park	Brevard County	01-063-	Tippecanoe Scrub Environmental Park -	Charlotte County
Broward			03-091-	Cedar Point Park - Phase III	Lemon Bay Conservancy
93-025-	Environmental Preserve	Town of Pembroke Park	04-004-	Amberjack Scrub Env. Park - Phase II	Charlotte County
94-008-	The Sawgrass Sanctuary	City of Sunrise	05-020-	Bayshore Park Addition - Phase II	Charlotte County
94-015-	Sheridan Oak Forest	City of Hollywood/Broward County	08-014-	Buck Creek Preserve	Charlotte County

ACQUIRED PROJECTS BY COUNTY 1991 - 2015

Project #	Project Name	Recipient	Project #	Project Name	Recipient
Citrus			Deval		
95-015-	Wallace Brooks/Lake Henderson	City of Inverness	91-046-	Cedar Point	City of Jacksonville
95-016-	Cooter Pond	City of Inverness	92-031-	Ortega Stream Valley Park	City of Jacksonville
96-002-	Nature Coast Environmental Center	City of Crystal River	92-032-	Blue Cypress	City of Jacksonville
01-138-	Kings Bay	City of Crystal River	93-006-	County Dock Historical Park	City of Jacksonville
08-088-	Three Sisters Springs	City of Crystal River	95-051-	Intracoastal Waterway Park	City of Atlantic Beach
Clay			95-058-	Dutton Island Intracoastal Waterway Park	City of Jacksonville/City of
96-022-	Keystone Beach - Smysor Park	City of Keystone Heights	96-050-	Tree Hill Nature Center Addition	City of Jacksonville
02-045-	Green Cove Springs Nature Preserve	City of Green Cove Springs	96-052-	Julington Creek Headwaters Park	City of Jacksonville
02-037-	Moccasin Slough	Clay County	98-034-	Julington Creek Headwaters Park II	City of Jacksonville
04-078-	Camp Chowanaw	Clay County	99-018-	Dutton Island	City of Jacksonville/City of
05-050-	Green Cove Springs Nature Preserve	City of Green Cove Springs	00-009-	Castaway Island Preserve	City of Jacksonville
Collier			01-034-	Cradle Creek Preserve	City of Jacksonville Beach
94-023-	Master Mitigation Preserve	Collier County	01-112-	McGirts Creek Park Expansion	City of Jacksonville
95-017-	Lake Avalon County Park	Collier County	01-115-	Reddie Point Preserve	City of Jacksonville
01-040-	The Naples Preserve	City of Naples	01-120-	Jacksonville-Baldwin Rails to Trails Buffer	City of Jacksonville
03-018-	Lely Mitigation Park	Collier County	01-122-	Beach and Peach Urban Park	City of Jacksonville
03-073-	Preserve the Preserve	Collier County	02-086-	Yellow Water Creek Trailhead	City of Jacksonville
04-042-	Goodland Harbor	Collier County	03-046-	McGirts Creek Park Expansion - Phase II	City of Jacksonville
05-027-	Gordon River Water Quality Park	Collier County	03-048-	Sal Taylor Creek Preserve	City of Jacksonville
06-043-	Gordon River Greenway Park	Collier County	04-052-	Jacksonville-Baldwin Rails to Trails Buffer II	City of Jacksonville
Columbia			05-044-	Cedar Point Preserve - Phase II	City of Jacksonville
94-001-	Alligator Lake	Columbia County	06-042-	Ribault River Urban Waterfront Park	City of Jacksonville
DeSoto			06-078-	Huguenot Memorial Park Expansion	City of Jacksonville
Dixie			Escambia		
02-036-	Joe Henry Anderson Senior Park	Dixie County	95-014-	Jones Swamp Wetlands Preserve	Escambia County
08-062-	Spurgeon Cheek Camp and Trailhead	Dixie County	98-030-	Old Chimney Property	City of Pensacola
08-063-	Mershon Williams Yellow Jacket Landing	Dixie County	98-089-	Scenic Highway Bluffs Preserve	City of Pensacola
Flagler			96-033-	North Escambia River Site	Town of Century
91-023-	Princess Place	Flagler County	05-041-	Jones Swamp Wetlands Preserve	Escambia County
93-016-	Princess Place II	Flagler County	Gadsden		
95-013-	Silver Lake Park	City of Flagler Beach	00-086-	Chattahoochee Nature and Rec	City of Chattahoochee
96-005-	Flagship Harbor Preserve	City of Flagler Beach/Flagler County	04-070-	Tanyard Creek Preservation Park - Phase II	City of Quincy
98-083-	River to Sea Preserve at Marineland	Flagler County/Town of Marineland	04-070-	Tanyard Creek Preservation Park - Phase II	City of Quincy
99-062-	Mala Compra Greenway	Flagler County	04-070-	Tanyard Creek Preservation Park - Phase II	City of Quincy
00-105-	Matanzas Estuary GeoPark	Town of Marineland	04-070-	Tanyard Creek Preservation Park - Phase II	City of Quincy
01-013-	Palm Coast Greenway	City of Palm Coast	04-070-	Tanyard Creek Preservation Park - Phase II	City of Quincy
02-013-	Mirror Lake Watershed	City of Flagler Beach	04-070-	Tanyard Creek Preservation Park - Phase II	City of Quincy
04-050-	Mala Compra Oceanfront Park Addition	Flagler County	04-070-	Tanyard Creek Preservation Park - Phase II	City of Quincy
04-024-	Ocean Walk Park	City of Flagler Beach	03-067-	Tanyard Creek Preservation Park - Phase I	City of Quincy
08-027-	Long's Landing Estuary	City of Palm Coast	Gilchrist		
Franklin			98-033-	Fort Fanning Heritage Park	City of Fanning Springs
93-011-	Apalachicola Riverwalk	City of Apalachicola	Gulf		
94-013-	Carrabelle Riverwalk & Tidal Basin Park	City of Carrabelle	93-028-	Shipyards Cove	City of Port St. Joe
95-078-	Apalachicola Waterfront	City of Apalachicola	08-077-	Port St. Joe Waterfront Park	City of Port St. Joe
00-001-	City of Apalachicola ACSC	City of Apalachicola	Hamilton		
02-040-	Carrabelle Wildlife Park	City of Carrabelle	Hardee		
04-063-	Apalachicola Waterfront Park	City of Apalachicola	98-001-	Peace River Park	City of Wauchula
04-076-	Crooked River Lighthouse Addition	City of Carrabelle	Hendry		
06-048-FF	Apalachicola Riverwalk Phase III - Seath Parcel	City of Apalachicola	Jefferson		
06-048-FF	Apalachicola Riverwalk - Phase III	City of Apalachicola	Leon		
06-093-FF	Indian Creek Park	Franklin County	Liberty		
06-048-FF	Apalachicola Riverwalk - Phase III - Cotton	City of Apalachicola	Madison		
07-111-FF7	Apalachicola Riverwalk - Phase V - Holmes and	City of Apalachicola	Manatee		
08-078-FF	Apalachicola Riverwalk - Phase VI - McLeMores Parce	City of Apalachicola	Polk		

ACQUIRED PROJECTS BY COUNTY 1991 - 2015

Project #	Project Name	Recipient	Project #	Project Name	Recipient
Hernando			Jackson		
93-012-	Cypress Lakes	Hernando County	95-077-	Merritt's Mill Pond	Jackson County
95-029-	The Good Neighbor Trail	City of Brooksville	03-066-	Marianna Performing Arts Park	City of Marianna
98-053-	Cypress Lakes Preserve Addition	Hernando County	Jefferson		
Highlands			Lafayette		
94-042-	Sun's Lakes Preserve	Highlands County	Lake		
Hillsborough			94-029-	Minneola Park and Lake Scenic Trail	City of Minneola
91-053-	Cypress Creek Preserve	Hillsborough County	95-041-	Lake Dora Recreation Park	City of Tavares
92-038-	Riverhills Park Addition	City of Temple Terrace	96-007-	Old Dixie Highway Park	Town of Lady Lake
92-039-	Temple Terrace Riverfront Park	City of Temple Terrace	96-015-	Tavares Elementary School Park	City of Tavares
92-041-	Cypress Street Restoration Park	Hillsborough County/City of Tampa	03-086-	PEAR Park Gateway	Lake County
93-018-	Blackwater Creek Preserve	Hillsborough County	04-030-	Ferndale Preserve on Lake Apopka	Lake County
94-009-	Blackwater Hammock	City of Tampa	03-104-	Leesburg Greenway Trail	City of Leesburg
95-027-	Massie/Zack Park and Preserve	City of Plant City	03-104-	Leesburg Greenway Trail	City of Leesburg
95-044-	Apollo Beach Park	Hillsborough County	04-028-	Mount Dora Recreation and Nature Park	City of Mount Dora
95-045-	Flynn Lake Nature Park	Hillsborough County	07-056-	Inland Groves	City of Clermont
96-010-	Sterling Downs	Hillsborough County	08-070-	Inland Groves - Phase II	City of Clermont
98-047-	New Tampa Flatwoods	City of Tampa	Leon		
98-048-	Fort Brooke Park	City of Tampa	94-034-	Lafayette Heritage Trail	City of Tallahassee
98-054-	Alafia Scrub	Hillsborough County	95-034-	Governor's Park	City of Tallahassee
99-010-	Cypress Creek Preserve - Phase II	Hillsborough County	95-037-	Lake Munson Preserve	Leon County
99-026-	Ribbon of Green	City of Tampa	95-036-	Okeechepkee Prairie	Leon County
00-032-	Riverhills Park Addition	City of Temple Terrace	99-083-	Timberlane Ravine	City of Tallahassee
00-045-	Fort Brooke Park Addition	City of Tampa	00-035-	Jackson View	Leon County
01-048-	Triple Creek Greenway	Hillsborough County	01-152-	St. Marks Headwaters	Leon County
01-049-	Town 'a Country	Hillsborough County	02-110-	Tallahassee Junction	City of Tallahassee
02-073-	Fish Hawk Creek	Hillsborough County	04-056-	Magnolia Ravine	City of Tallahassee
02-093-	Fort Brooke - Phase III	City of Tampa	04-067-	Copeland Sink	Leon County/Apalachee Land
03-081-	River Tower Park	City of Tampa	05-010-	Capital Cascades Trail - Segment 4	City of Tallahassee
03-083-	South MacDill 48	City of Tampa	05-011-FF	St. Marks Headwaters - Booth - Phase II	Leon County
04-032-	Rocky Creek Trails	Hillsborough County	05-075-FF	Timberlane Ravine - Phase II	City of Tallahassee
03-015-	Alafia River - Phase I	Hillsborough County	05-010-FF	Capital Cascades Trail - Segment 4	City of Tallahassee
04-029-	Alafia River - Phase II	Hillsborough County	06-114-FF	Dr. Charles Billings Greenway	City of Tallahassee
04-029-	Alafia River - Phase II	Hillsborough County	07-102-FF	Fred George Greenway	Leon County
06-019-	Triple Creek Greenway - Phase II	Hillsborough County	07-102-FF	Fred George Greenway	Leon County
08-022-	Lake Dan Preserve - Phase I	Hillsborough County	07-102-FF	Fred George Greenway	Leon County
Holmes			Levy		
96-035-	Wrights Creek Site	Holmes County	92-003-	Yankeetown W R Park	Town of Yankeetown
Indian River			93-004-	Yankeetown Wilderness Addition	Town of Yankeetown
92-018-	Wabasso Scrub	Indian River County	98-102-	Devil's Hammock - Phase I	Levy County
93-002-	Prang Island	Indian River County/City of Vero	00-018-	Withlacoochee Gulf Pathways	Town of Yankeetown
95-025-	AGC Industrial Tract	City of Sebastian/Indian River County	01-080-	Cedar Key Cemetery Point Park	City of Cedar Key
94-032-	Sebastian Scrub	City of Sebastian/Indian River County	Madison		
96-043-	St. Sebastian PUD	Indian River County/City of Sebastian			
96-044-	Round Island South	Indian River County			
99-055-	Oslo Riverfront South	Indian River County			
98-057-	Harmony Oaks	Indian River County			
98-058-	Oyster Bar Salt Marsh	Indian River County			
99-056-	North Sebastian C.A. Addition	Indian River County			
01-055-	Hallstrom Farmstead	Indian River County			
01-154-	Lost Tree Island	Indian River County/Town of Indian River			
02-058-	Kroegel Homestead	Indian River County			
03-084-	Orca South Link	Indian River County			
03-044-	St. Sebastian River Greenway	Marine Resources Council			
04-025-	Anzia Tract	Indian River County			
05-038-	Russell Grove River Buffer	Indian River County			
06-037-	ORCA Diamond Tract	Indian River County			
07-030-	Fellsmere Trailhead Preserve	City of Fellsmere			
07-039-	South Prang Preserve	Indian River County			
05-039-	Jones' Pier	Indian River County			

ACQUIRED PROJECTS BY COUNTY 1991 - 2015

Project #	Project Name	Recipient	Project #	Project Name	Recipient
Lee			Miami-Dade		
91-007-	Pine Island Eagle Habitat	Lee County	91-001-	Deering Estates Addition	Miami-Dade County
92-015-	Hickey Creek Mitigation Park	Lee County	94-040-	Village Green	Village of Key Biscayne
93-019-	Silver Key	City of Sanibel	95-039-	Oleta River Corridor	Miami-Dade County
95-003-	Gulfside Park Addition	City of Sanibel	96-037-	County Line Scrub	Miami-Dade County
96-046-	Cultural and Environmental Learning Center	Town of Fort Myers Beach	95-021-	Hattie Bauer Hammock	Miami-Dade County
99-029-	East Riverside Neighborhood Park	City of Ft. Myers	98-028-	Spring Garden Point on the Miami River	Miami-Dade County/City of Miami
01-031-	Caloosahatchee Creeks Preserve	Lee County	98-046-	Sunny Isles Beach Oceanfront Park	City of Sunny Isles Beach
01-039-	Poad Apple Park	City of Sanibel	98-023-	Biscayne Coastal Wetlands	Miami-Dade County
02-072-	San Carlos Bay - Buncke Beach Preserve	Lee County	00-022-	Tree Island Park	Miami-Dade County
02-098-	Newton Beach Park	Town of Ft. Myers Beach	00-053-	Pinecrest Parrot Jungle	City of Pinecrest
03-059-	City of Bonita Springs Island Park	City of Bonita Springs	01-043-	Deering Estate-Cutler Glade Rehydration	Miami-Dade County
03-060-	Prairie Pines Preserve Addition	Lee County	01-119-	Boystown/Camp Matecumbe	Miami-Dade County
04-031-	Wild Turkey Strand Preserve	Lee County	03-019-	West Kendall District Park Addition	Miami-Dade County
08-012-	Galt Preserve	Lee County	05-042-	C100/Bayfront Property (Haas)	Village of Palmetto Bay
07-047-	Pine Island at Matlacha Pass	Sarasota Conservation Foundation	06-025-	Fern Isle Park Expansion	City of Miami
			08-005-	Doral North Park - Phase II	City of Doral
Manatee			Massau		
94-024-	Manatee Headwaters at Duette	Manatee County	92-011-	North Beach Park	City of Fernandina Beach
96-029-	Palmetto Estuary Preservation Project	City of Palmetto	95-018-	Seaside Park	City of Fernandina Beach
98-008-	Riverview Pointe	Manatee County	95-059-	Egans Creek Greenway - Phase I	City of Fernandina Beach
98-009-	1912 Cortez Schoolhouse and Nature Preserve	Manatee County	96-013-	Egans Creek Greenway - Phase II	City of Fernandina Beach
98-006-	Grassy Point Preserve	City of Holmes Beach	01-025-	Egans Creek Greenway - Phase III	City of Fernandina Beach
01-004-	Bennett Park	Manatee County	03-041-	Goffinsville - Nassau River Park	Nassau County
02-006-	Robinson Preserve	Manatee County	04-026-	American Beach Historic Park	Nassau County
03-075-	Moody Branch	Manatee County	04-026-	American Beach Historic Park - Nelson	Nassau County
04-041-	The Conservatory	Manatee County			
05-026-	Hidden Harbour	Manatee County	Okaloosa		
07-001-	Neal Preserve	Manatee County	94-014-	Turkey Creekwalk - Barnett	City of Niceville
Marion			96-004-	Oak Tree Park	City of Mary Esther
92-045-	Silver Creek Property	Marion County	98-020-	Okaloosa Island Marler Park	Okaloosa County
92-033-	O'Neal Site	City of Ocala	00-004-	Oak Tree Nature Park - Phase II	City of Mary Esther
95-033-	Dunnellon Municipal Park	City of Dunnellon	00-067-	Miracle Strip Park on the Sound	City of Fort Walton Beach
95-009-	Scott Springs	City of Ocala	04-006-	The Shore at Crystal Beach	City of Destin
98-043-	Fort King	City of Ocala/Marion County	08-007-	Captain Royal Melvin Park	City of Destin
07-022-	Blue Run of Dunnellon Park	City of Dunnellon	11-015-	Turkey Creek Walk Park Expansion - Ruckel	City of Niceville
Martin			Okeechobee		
91-031-	Kiplinger Site	Martin County	Orange		
91-029-	Gomez Avenue	Martin County	93-009-	Airport Lakes Park	City of Orlando
92-036-	Beachwalk/Pasleys	Martin County	92-010-	Kelly Park Expansion	Orange County
92-035-	Otter Creek	Martin County	95-053-	Minnehaha Park Canal	City of Maitland
93-014-	Lake Okeechobee Ridge	Martin County	96-031-	Oakland Community Nature Park	Town of Oakland
94-019-	Rocky Point	Martin County	01-029-	Eagle Nest Cornerstone Park	City of Orlando
94-045-	Stuart Beach Addition	Martin County	01-056-	Kelly Park Addition	Orange County
96-038-	FIT Site	Martin County	01-083-	Parcel 105	Orange County
98-045-	Haney Creek	City of Stuart	01-053-	Orange County Natural Resource Center	Orange County
99-022-	Poppleton Creek Watershed	City of Stuart	03-002-	Ft. Christmas Community Park Addition	Orange County
00-011-	Santa Lucea	Martin County	04-051-	Howell Branch Preserve - Phase II	City of Winter Park
01-081-	Bonair Beach	Town of Jupiter Island	11-014-	Kelly Park 3rd Addition - Camp Joy Property	Orange County
01-133-	Delaplanc Peaiasula Blueway	Martin Co Regional Land Trust	11-012-	Tucker Ranch Heritage Park	City of Winter Garden
03-003-	Bob Graham Beach Addition	Martin County			
03-004-	Jensen Beach	Martin County			
03-092-	Pal Mar East - Phase I	Martin County			
04-046-	Pal Mar East - Phase II	Martin County			
08-047-	Clifton S. Perry Beach	Martin County			

ACQUIRED PROJECTS BY COUNTY 1991 - 2015

Project #	Project Name	Recipient	Project #	Project Name	Recipient
Monroe			Palm Beach (cont.)		
31-041-	Coco Plum Beach	Monroe County	01-016-	Section 16 West Addition to the West Palm	City of West Palm Beach
93-001-	Rate of Growth Controls	Monroe County	01-033-	North Jupiter Flatwoods	Palm Beach County/Town of
93-002-	Recreational L.O.S. Standards	Monroe County	01-035-	Overlook Scrub	Palm Beach County/Town of
95-001-	Recreation and Open Space Element	Monroe County	01-036-	Lake Park Scrub Natural Area	Palm Beach County/Town of Lake
98-097-	Berg Property	City of Key West	01-037-	Acreage Pines Natural Area	Palm Beach County
99-010-	Monroe County Comprehensive Land Authority	Monroe County	01-100-	Ombres Property	City of West Palm Beach
99-011-	Monroe County Comprehensive Land Authority #11	Monroe County	02-051-	Blue Lake Scrub	Palm Beach County/City of Boca
99-012-	Monroe County Comprehensive Land Authority	Monroe County	02-100-	Limestone Creek	Palm Beach County
99-013-	Monroe County Comprehensive Land Authority	Monroe County	03-105-	Cypress Creek Natural Area	Palm Beach County
99-014-	Monroe County Comprehensive Land Authority	Monroe County	04-023-	Jaycee Park Acquisition	City of Boynton Beach
99-015-	Monroe County Comprehensive Land Authority #15	Monroe County	04-043-	Cypress Creek Natural Area	Palm Beach County
99-016-	Monroe County Comprehensive Land Authority	Monroe County	04-062-	Old School Square Addition	City of Delray Beach
99-017-	Monroe County Comprehensive Land Authority #17	Monroe County	05-028-	Indian Lakes Natural Area	Palm Beach County
99-018-	Monroe County Comprehensive Land Authority	Monroe County	06-017-	Delaware Scrub Natural Area	Town of Jupiter/Palm Beach
99-019-	Monroe County Comprehensive Land Authority	Monroe County	06-041-	Susan DuBois Kiandt Estate	Palm Beach County
99-020-	Monroe County Comprehensive Land Authority	Monroe County	07-010-	Cypress Creek Preserve - Phase III	Palm Beach County
99-021-	Monroe County Comprehensive Land Authority	Monroe County	08-001-	Cypress Creek Natural Area - Phase IV	Palm Beach County
99-022-	Monroe County Comprehensive Land Authority	Monroe County	11-001-	Cypress Creek Natural Area - Phase V	Palm Beach County
99-002-	Monroe County Comprehensive Land Authority #2	Monroe County	Pasco		
99-003-	Monroe County Comprehensive Land Authority #3	Monroe County	31-039-	Boyce/Wetstone	Pasco County
99-004-	Monroe County Comprehensive Land Authority #4	Monroe County	34-007-	Pithlachascotee River Park	City of New Port Richey
99-005-	Monroe County Comprehensive Land Authority #5	Monroe County	35-067-	Port Richey Waterfront Park	City of Port Richey
99-006-	Monroe County Comprehensive Land Authority #6	Monroe County	04-014-	Strauber Memorial Highway Coastal Park	Pasco County
99-007-	Monroe County Comprehensive Land Authority #7	Monroe County	07-089-	Upper Pithlachascotee River Preserve	Pasco County
99-008-	Monroe County Comprehensive Land Authority #8	Monroe County	08-039-	Pasco Palms	Pasco County
99-009-	Monroe County Comprehensive Land Authority #9	Monroe County	11-047-	Morsani Ranch	Pasco County
99-023-	Monroe County Comprehensive Land Authority	Monroe County	Polk		
99-024-	Monroe County Comprehensive Land Authority	Monroe County	32-002-	Lake Bonny Community Park	City of Lakeland
99-001-	Monroe County Comprehensive Land Authority #1	Monroe County	32-006-	Lake Howard	City of Winter Haven
01-001-	City of Key Colony Beach	City of Key Colony Beach	35-028-	Mount Pisgah - Peace River	Polk County
01-058-	North Village Neighborhood Park	Village of Islamorada	36-001-	Green Swamp Greenway - Phase II	Polk County
03-034-	Key West Botanical Gardens	City of Key West	39-049-	Lakeland Highlands Scrub	Polk County
05-009-	Green Turtle Hammock	Islamorada/Village of Islands	04-033-	Lake Hartridge Nature Park	City of Winter Haven
04-001-	Marathon Waterfront Park	City of Marathon	04-075-	MacKay Garden and Lakeside Preserve	City of Lake Alfred
08-028-	Key Tree Cactus	Village of Islamorada	05-008-	Bok Tower Sanctuary	Green Horizon Land Trust, Inc.
Orange / Osceola			06-020-	Gator Creek Preserve	Polk County
31-009-	Split Oak Mitigation Park	Orange County/Osceola County	05-008-	Bok Tower Sanctuary - Marks Parcel	Green Horizon Land Trust, Inc.
Osceola			05-008-	Bok Tower Sanctuary - Moore, Yoars and	Green Horizon Land Trust, Inc.
95-011-	Lake Lizzie Recreation Park	Osceola County	05-008-	Bok Tower Sanctuary - SR Estate/Colburn	Green Horizon Land Trust, Inc.
98-065-	Shingle Creek Recreational Preserve	Osceola County/City of Kissimmee	05-008-	Bok Tower Sanctuary - Story Parcel	Green Horizon Land Trust, Inc.
01-143-	Shingle Creek Recreational Preserve North	Osceola County	Putnam		
03-029-	Shingle Creek	Osceola County	01-136-	Melrose Heritage Park	Putnam County
03-030-	Lake Tohopekaliga Park and Marina	Osceola County	01-137-	Tanglewyde Center	Putnam County
06-015-	Shingle Creek Recreational Preserve Center	Osceola County/City of Kissimmee	08-020-	Georgetown Riverside Park	Putnam County
Palm Beach			08-084-	Nine Mile Swamp Park and Trail	Putnam County/Putnam Land
31-022-	Seacrest Scrub	Palm Beach County/City of Boynton	Santa Rosa		
92-020-	Osborne Site	City of Boca Raton	34-012-	Riverwalk Expansion	City of Milton
92-022-	Olympia York/Serenoa Glades	City of Boca Raton	00-082-	Russell Harbor Landing Expansion	City of Milton
92-024-	Section 16 Addition	City of West Palm Beach			
93-008-	Rosemary Scrub	Palm Beach County/ City of Boynton			
93-015-	Section 10 Addition	City of West Palm Beach			
93-017-	South Bay Park	City of South Bay			
93-020-	Hidden Valley North/Rosemary Ridge Preserve	City of Boca Raton			
94-005-	Delray Oaks	Palm Beach County/City of Delray			
94-021-	Section 15 Addition	City of West Palm Beach			
95-007-	Sandaway House	City of Delray Beach/Palm Beach			
95-046-	Juno Hills Oceanfront	Town of Juno Beach/Palm Beach			
96-011-	Frenchman's Forest	Palm Beach County/City of Palm			
98-066-	Hungryland Slough Tract - Bee Line Corridor	Palm Beach County			
98-067-	Bee Line Corridor Natural Area	Palm Beach County			
99-015-	High Ridge Scrub Addition	Palm Beach County			
99-028-	Bee Line Corridor - Phase II	Palm Beach County			
00-029-	Harbor View Park	Town of Jupiter			

ACQUIRED PROJECTS BY COUNTY 1991 - 2015

Project #	Project Name	Recipient	Project #	Project Name	Recipient
Volusia					
91-042-	Lake Beresford	Volusia County			
91-043-	Colby/Alderman	Volusia County			
92-023-	Indian River Lagoon Preserve	City of New Smyrna Beach			
93-021-	Gemini Springs	Volusia County			
94-033-	Ponce Preserve	Town of Ponce Inlet			
94-038-	Boy Scouts Property	City of Deland			
95-024-	Painters Pond	City of Deland			
96-039-	Green Springs	Volusia County			
98-010-	North Peninsula In-holdings	Volusia County			
98-036-	Lake Helen Greenway	City of Lake Helen			
98-112-	North Beach Community Park	City of New Smyrna Beach			
01-032-	Daytona Beach Historic Pier and Boardwalk	City of Daytona Beach			
01-071-	Doris Leeper Spruce Creek	Volusia County			
01-129-	Town Center	City of Port Orange			
02-003-	Catholic Diocese Tract	Volusia County			
02-094-	Town Center Marcanoio Property	City of Port Orange			
03-064-	Ponce Preserve Inlet	Town of Ponce Inlet			
04-005-	Doris Leeper Spruce Creek - Phase II	Volusia County			
04-060-	Timucuan Oaks Botanical Gardens	Town of Ponce Inlet			
04-018-	Russell Property	City of Port Orange			
07-020-	Esther Street Beachfront Park	City of New Smyrna Beach			
08-004-	Stasaki Property	City of Port Orange			
			Wakulla		
93-029-	Shell Point Beach	Wakulla County			
94-041-	Purify Creek Acquisition Project	Wakulla County			
98-110-	Panacea Mineral Springs	Wakulla County			
07-057-	Big Bend Maritime Center	Wakulla County			
			Walton		
02-099-	Garfield Access Addition	Walton County			
03-001-	Stallworth Lake Preserve	Walton County			
08-006-	Town Center Park and Preserve	Walton County			
			Washington		
96-034-	Holmes Creek Boat Ramp	Washington County			
			629 Total Projects		

SUMMARY OF FINANCIAL ACTIVITIES

2014-2015

Florida Communities Trust

SUMMARY OF FINANCIAL ACTIVITY 2014-2015

FLORIDA COMMUNITIES TRUST PROGRAM (FCT) OPERATIONS

FCT did not receive a direct appropriation in FY14/15. The program was funded from the Land and Recreation Operation Services' Operating Budget, not the Florida Communities Trust Fund.

Total Cost of FCT Operations during FY14/15		
Salaries and Benefits		\$ 175,584.94
Expenses		\$ 26,233.00
Indirect Cost		\$ 65,159.57
Outsourcing assistance		\$ 22,657.00
TOTAL		\$ 289,634.51

FLORIDA COMMUNITIES TRUST FUND

06/30/2014 YEAR END BALANCE of the Florida Communities Trust Fund		\$ 520,893.45
PLUS 2014-2015 DEPOSITS		
Interest from Investments		\$ 117.11
Revenue received from the operation, management, lease, etc. of FCT properties, such as use agreement fees, land use proceeds and upland easement fees.		\$ -
Correction made to remove a \$200,000 use agreement fee (prior year deposit) that was deposited into the FCTF in error.		\$ (200,000.00)
LESS 2014-2015 EXPENDITURES		
General Revenue Service Charges		\$ 16,072.83
6/30/2015 YEAR END BALANCE of the Florida Communities Trust Fund		\$ 304,937.73

FLORIDA FOREVER PROGRAM

06/30/2014 YEAR END BALANCE		\$ 12,362,140.64
<u>2014-2015 Deposits</u>		
Transfers in within DEP (Florida Forever TF)		\$ 1,567,606.25
PLUS 2014-2015 DEPOSITS		
<u>2014-2015 Expenditures</u>		
Returns & Refunds		\$ -
Expenditures for Land Acquisition Activities		\$ 1,567,606.25
LESS 2014-2015 EXPENDITURES		
6/30/2015 YEAR END BALANCE		\$ 10,794,534.39

The FCT Grant Amount Delivered referenced on Page 14 of the FCT Annual Report is slightly different than the Florida Forever expenditures referenced above because some project costs were expended prior to FY14/15.

During the 2015 Legislative Session it was determined (SB 2516-A) that the Florida Communities Trust Fund (FCTF) would be terminated during FY 15/16 and the remaining cash balance transferred to the Land Acquisition Trust Fund. Neither the operations of the Florida Communities Trust or the Florida Forever Program are funded through the FCTF so this should not have any consequences or significances to the FCT Program.

Florida Communities Trust Board Members

Gary Clark



Gary Clark is the Deputy Secretary for Land and Recreation with the Florida Department of Environmental Protection. Gary provides oversight and direction to the Division of Recreation and Parks, which manages the Florida State Parks system comprised of 174 state parks and trails. The Deputy Secretary also oversees the Division of State Lands in their responsibilities, including acquisition, maintenance and disposition of state owned land.

A lifelong resident of Chipley, Florida, Gary is the fourth generation to grow up living and working on his family's 400-acre farm. Gary is extremely active in his local community, serving as director and shareholder of Community Bank in Chipley and current member, former chairman, of the Board of Trustees for Chipola College. He has also served on the Northwest Florida Water Management District Board and Washington County School Board, including two terms as chairman. A founding member of the Opportunity Florida Regional Economic Development Council, Gary has been a member of the Washington County Chamber of Commerce Board of Directors since 1990.

Greg Jones



Gregory Jones has close to 15 years in experience in resort development and management in state of Florida. He is currently the Senior Project Manager for WCI Communities Inc. (NYSE:WCIC) Lost Key Golf & Beach Club & Marina and Yacht Club located in Perdido Key, Florida. During the last decade he has been actively involved in developing a balance between sustainable growth in his community while establishing a healthy environment to ensure a long term habitat plan for the endangered Perdido Key Beach Mouse. In addition, Gregory has been an active participant of local community efforts by currently residing on the Tourism Development Council and West End Advisory Boards for Escambia County in addition to serving as a current board member on four community residential boards.

Lynda Bell



Lynda Bell served on the Miami Dade County Commission from 2010-2014 where she was the Vice Chair of the Board from 2012-2014. She chaired the Finance Committee, the Value Adjustment Board, the Sports Commission and the Port of Miami Committee. Lynda was also active on both Florida Association of Counties and National Association of Counties.

Prior to serving on the County Commission Mrs. Bell served as a Councilwoman, Vice Mayor and the first and only female Mayor of the City of Homestead. She has been recognized for her many accomplishments including the “In the Company of Women” award in the governmental category. She received the “I am Blessed” award, was recognized by the Association of Public Administrators with the “Woman of Distinction” award, won the Chamber of Commerce “Athena” award, and was given the Miami Dade Farm Bureau Advocacy award.

Mrs. Bell has a Bachelor’s of Science in Supervision and Management from Miami-Dade College School of Business and has been married to Mark Bell for 30 years. They have three daughters and 11 grandchildren. They have lived in Homestead, Florida for 36 years.

Erick Lindblad



Erick Lindblad has served as the Executive Director of the Sanibel-Captiva Conservation Foundation since 1986. He has been instrumental in the Foundation’s acquisition of more than 1,900 acres of wildlife preserve areas on and around Sanibel and Captiva and has been involved in a variety of land management activities. In addition, the Foundation has an established nature center, native plant nursery, marine laboratory and ongoing programs in environmental education, sea turtle conservation and natural resource policy.

As part of his commitment to the sustainable development of southwest Florida, Erick served on Conservation 20/20, Lee County’s Conservation Land Acquisition and Stewardship Advisory Council and the Land Management Subcommittee. He was also appointed by the Lee County Board of County Commissioners to serve as the county’s representative on the Babcock Ranch, Inc. Board, which oversees the management of the state’s 71,000-acre Babcock Ranch Preserve in Lee and Charlotte counties.

Prior to his tenure at the Sanibel-Captiva Conservation Foundation, Mr. Lindblad was the director of Newfound Harbor Marine Institute at Seacamp on Big Pine Key, Florida from 1979 to 1986. He graduated in 1974 from Millikin University in Illinois with a Bachelor of Arts degree in Biology.

Vacant

Former Elected Official of a Metropolitan Municipal Government

FLORIDA DEPARTMENT OF ENVIRONMENTAL PROTECTION
FLORIDA COMMUNITIES TRUST 2014-2015 ANNUAL REPORT

Rick Scott, Governor
Jonathan P. Steverson, Secretary

3900 Commonwealth Boulevard
Tallahassee, Florida 32399-3000
(850) 245-2555

SEPTEMBER 2015

Section 380.512, Florida Statutes, requires the Florida Communities Trust to submit to the Governor, the Speaker of the House of Representatives, the President of the Senate and the minority leaders of the House of Representatives and the Senate, within three months after the end of its fiscal year, a complete and detailed report setting forth the following:

- (1) Its operations and accomplishments
- (2) Its receipts and expenditures during the fiscal year, in accordance with the categories or classifications the trust establishes for its operating and capital outlay purposes.
- (3) Its assets and liabilities at the end of its fiscal year and the status of reserve, special or other funds.
- (4) An evaluation of the effectiveness of the projects undertaken in carrying out this part.
- (5) Identification of additional funding, legislation, or other resources required to carry out the objectives of this part more effectively.
- (6) An account of any other trust or department duties established by this part.