
Florida Department of Children and Families Annual Human Trafficking Report 2012-13 Federal Fiscal Year



Esther Jacobo
Interim Secretary

Rick Scott
Governor

Mission: Protect the Vulnerable, Promote Strong and Economically Self-Sufficient Families, and Advance Personal and Family Recovery and Resiliency

I. Background

Section 39.001(4), F.S. establishes the following goals for the treatment of sexually exploited children who are residing in the dependency system:

- Ensure that these children are safe;
- Provide for the treatment of such children as dependent children, rather than as delinquents in the criminal or juvenile systems;
- Sever the bond between exploited children and traffickers, and reunite these children with their families or provide them with appropriate guardians;
- Enable these children to be willing and reliable witnesses in the prosecution of human traffickers

II. Purpose

This report provides information as required in section 39.524(3), F. S. as follows:

1. A review of Human Trafficking allegations received and accepted by the Florida Abuse Hotline.
2. A review of child abuse investigative findings associated with allegations of Human Trafficking.
3. A review of assessment and placement activities of identified Human Trafficking victims residing within the dependency system.

The majority of activities described within this report cover activities that occurred between October 1, 2012 and September 30, 2013 (Federal Fiscal Year) unless otherwise noted.

1. Florida Abuse Hotline Child Abuse Reports Received and Accepted (initial and additional)

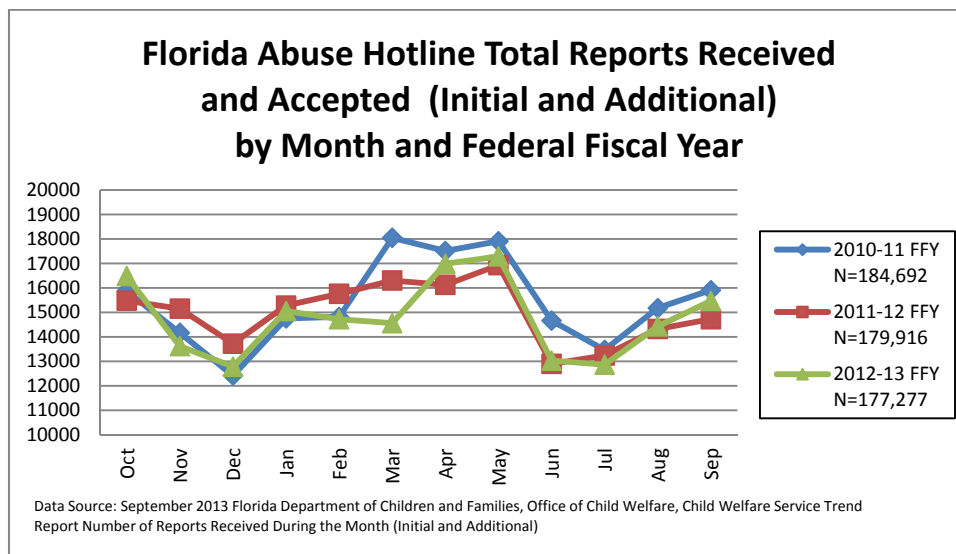
Prior to full implementation of the Florida Safe Harbor Act on January 1, 2013, the Florida Department of Children and Families (FDCF) made major modifications to the Department's Human Trafficking Operating Procedure (CFOP 175-14, INTAKES AND INVESTIGATIVE RESPONSE TO THE HUMAN TRAFFICKING OF CHILDREN) and the Department's Statewide Automated Child Welfare Information System (SACWIS), Florida Safe Families Network (FSFN) in support of Florida's Safe Harbor Act. These changes updated and clarified worker roles and responsibilities, while supporting capturing more detailed information on potential and known juvenile Human Trafficking victims. Prior to January 1, 2013, the Department was only able to capture Human Trafficking allegations at a general level. After January 1, 2013, the Department began categorizing Human Trafficking allegations into three primary categories:

- Human Trafficking-Commercial Sexual Exploitation of a Child (CSEC) Non-caregiver;
- Human Trafficking-Commercial Sexual Exploitation of a Child (CSEC) Caregiver; and
- Human Trafficking-Labor.

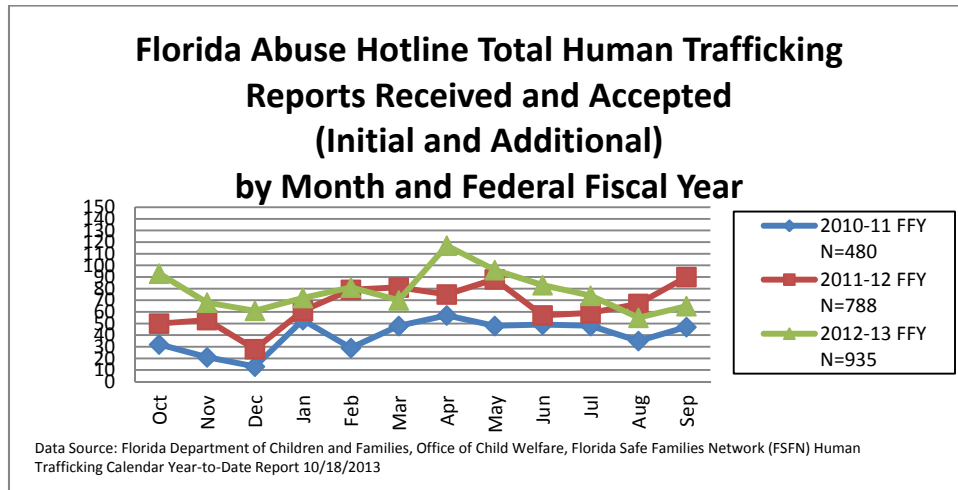
Due to the limited number of months this functionality has been in place, the Department manually has reviewed all Florida Abuse Hotline (Hotline) intakes received during the course of the 2012-13 Federal Fiscal Year (FFY) in order to allow for data collected prior to introduction of these new FSFN data elements to be included and categorized within this report.

General Intake Information

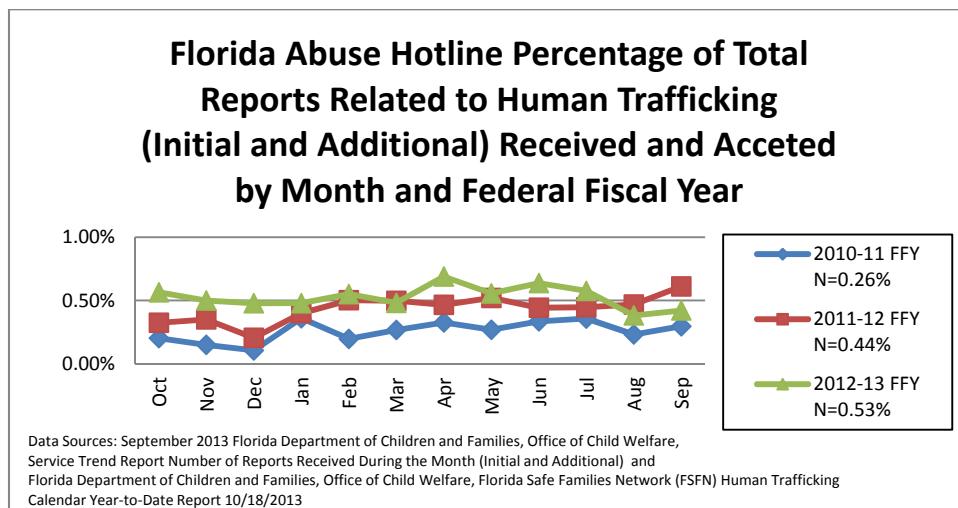
Over the last three FFYs, the total number of child abuse reports (initial and additional) received and accepted by the Hotline has remained fairly constant. Between FFY 2010-11 and FFY 2012-13, the total number of child abuse reports received and accepted by the Hotline fell by 4%, from 184,692 during FFY 2010-11 to 177,277 during FFY 2012-13.



During the same period, the number of child abuse reports received and accepted by the Hotline in which there was an allegation of Human Trafficking has increased significantly. During FFY 2010-11, the total number of reports was 480. Over the course of FFY 2012-13, this number increased to 935. This represents a 95% increase in the total number of reports received and accepted by the Hotline in which there was an allegation of Human Trafficking.



While the total number of this type of child abuse report received and accepted by the Hotline increased significantly, these reports still account for only a small percentage of the total number of child abuse reports received and accepted by the Hotline. For FFY 2010-11, the percentage of child abuse reports received and accepted by the Hotline where an allegation of Human Trafficking was present accounted for only 0.26% of the total report volume. By the FFY 2012-13, this percentage more than doubled, but Human Trafficking allegations still accounted for only 0.53% of the Hotline’s total report volume.



General Human Trafficking Intake Information by Area

Given the distribution of Florida's estimated child population, it is not surprising that the majority of child abuse reports (initial and additional) received and accepted by the Hotline containing an allegation of Human Trafficking were generally located within FDCF Regions and Circuits containing one or more of Florida's larger urban areas. FDCF Regions/Circuits that contain larger urban areas are:

- FDCF Northeast Region/Circuit 4 (Clay, Duval and Nassau Counties) - Jacksonville
- FDCF Central Region/Circuit 9 (Orange and Osceola Counties) - Orlando
- FDCF SunCoast Region/Circuit 6 (Pasco and Pinellas Counties) - St. Petersburg
- FDCF SunCoast Region/Circuit 13 (Hillsborough County) - Tampa
- FDCF Southeast Region/Circuit 15 (Palm Beach County) - West Palm Beach
- FDCF Southeast Region/Circuit 17 (Broward County) - Ft. Lauderdale
- FDCF Southern Region/Circuit 11 (Miami-Dade County) – Miami.

These 7 larger urban area FDCF Circuits generated:

- 325 of the 480 (67%) total child abuse reports that contained an allegation of human trafficking in FFY 2010-11.
- 514 of the 788 (65%) total child abuse reports that contained an allegation of human trafficking in FFY 2011-12.
- 651 of the 935 (70%) total child abuse reports that contained an allegation of human trafficking in FFY 2012-13.

This urban bias towards the generation of Human Trafficking child abuse reports remains present even after adjustment to a rate per 1,000 children, with three exceptions of the less densely populated area of the state:

- FDCF Central Region/Circuit 10 (Hardee, Highlands, and Polk Counties);
- FDCF Northwest Region/Circuit 14 (Bay, Calhoun, Gulf, Holmes, Jackson and Washington Counties); and
- FDCF Southern Region/Circuit 16 (Monroe County).

Each of these three areas experienced two or more years in which the rate of Human Trafficking child abuse reports exceeded the statewide rate for that FFY.

Even with a near-doubling between FFY 2010-11 and FFY 2012-13, the rate of child abuse reports per 1,000 children containing an allegation of Human Trafficking increased only from .012 per 1,000 in FFY 2010-11 to 0.23 per 1,000 in FFY 2012-13. The three areas of the state that experienced the highest Human Trafficking allegation rates per 1,000 children (in excess of 0.30 per 1,000 children) over the last three FFYs were:

- Circuit 9 (Orange and Osceola Counties) - rate of .40 per 1,000 children in FFY 2012-13

- Circuit 16 (Monroe County) - rate of .38 per 1,000 children in FFY 2011-12 and 0.83 per 1,000 in FFY 2012-13; and
- Circuit 17 (Broward County) - rate of .39 per 1,000 children in FFY 2012-13

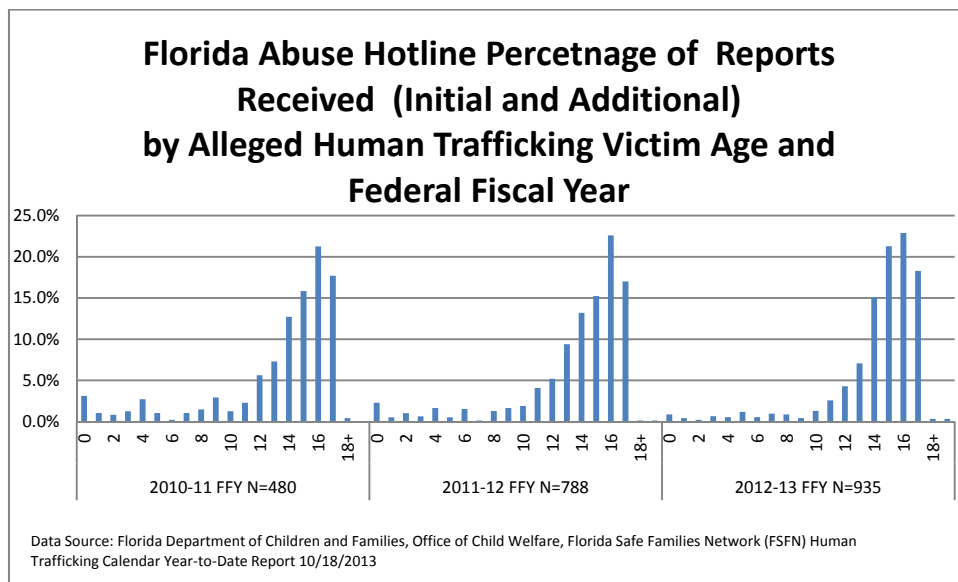
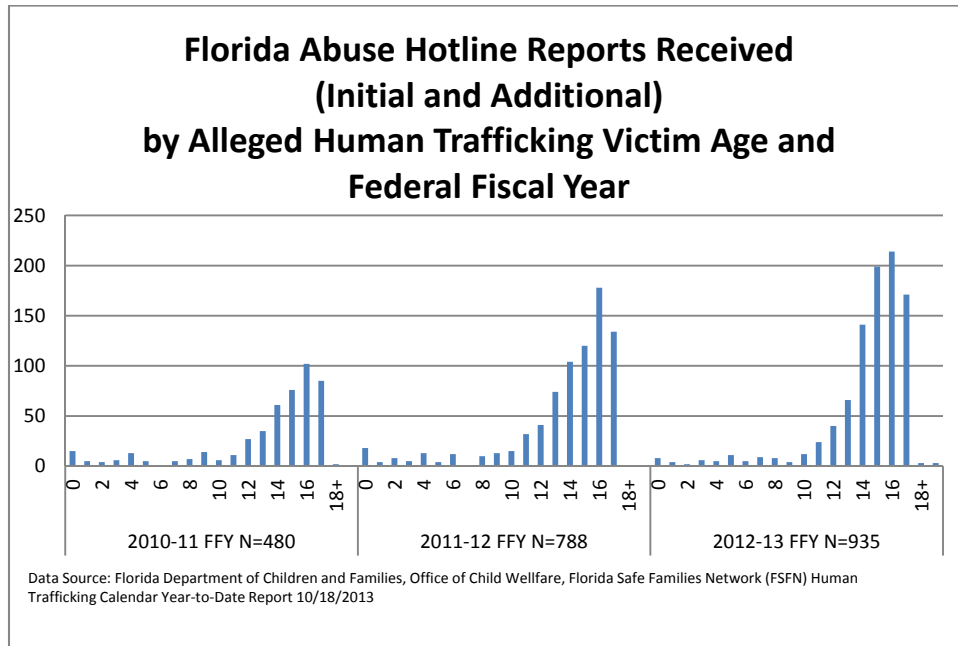
The table on the next page provides a detailed outline for FFY 2012-13 of the estimated child population, number of Human Trafficking type child abuse reports received and accepted by the Hotline, and the rate per 1,000 Florida children for all Human Trafficking type child abuse reports received and accepted by the Hotline for the last three FFYs.

Florida Abuse Hotline Total Human Trafficking Reports Received (Initial and Additional) Rate per 1000 Children by Federal Fiscal Year and Region/Circuit										
Region	Circuit	10-11 FFY Estimated Child Population	10-11 FFY Child Abuse Report w/Human Trafficking	10-11 FFY Human Trafficking Allegation Rate per 1000 Children	11-12 FFY Estimated Child Population	11-12 FFY Child Abuse Report w/Human Trafficking	11-12 FFY Human Trafficking Allegation Rate per 1000 Children	12-13 FFY Estimated Child Population	12-13 FFY Child Abuse Report w/Human Trafficking	12-13 FFY Human Trafficking Allegation Rate per 1000 Children
Central	Circuit 05	191647	19	0.10	191177	24	0.13	190201	12	0.06
	Circuit 09	359495	64	0.18	358055	92	0.26	347853	139	0.40
	Circuit 10	165466	16	0.10	164776	37	0.22	167515	48	0.29
	Circuit 18	206267	12	0.06	204466	41	0.20	202614	39	0.19
Central Total		922875	111	0.12	918474	194	0.21	908183	238	0.26
Northeast	Circuit 03	41568	6	0.14	41473	5	0.12	41054	4	0.10
	Circuit 04	289082	24	0.08	283383	32	0.11	268639	60	0.22
	Circuit 07	171309	16	0.09	169125	38	0.22	173028	32	0.18
	Circuit 08	77158	7	0.09	77388	11	0.14	72122	12	0.17
Northeast Total		579117	53	0.09	571369	86	0.15	554843	108	0.19
Northwest	Circuit 01	162575	13	0.08	161052	23	0.14	153905	22	0.14
	Circuit 02	81048	4	0.05	79319	13	0.16	78797	13	0.16
	Circuit 14	63781	13	0.20	62669	16	0.26	61892	14	0.23
Northwest Total		307404	30	0.10	303040	52	0.17	294594	49	0.17
Southeast	Circuit 15	270882	26	0.10	271266	42	0.15	268495	40	0.15
	Circuit 17	407694	51	0.13	407498	120	0.29	387722	152	0.39
	Circuit 19	120130	15	0.12	120204	16	0.13	123144	36	0.29
Southeast Total		798706	92	0.12	798968	178	0.22	779361	228	0.29
Southern	Circuit 11	594557	87	0.15	591780	126	0.21	548848	129	0.24
	Circuit 16	12828	0	0.00	13296	5	0.38	10869	9	0.83
Southern Total		607385	87	0.14	605076	131	0.22	559717	138	0.25
SunCoast	Circuit 06	261831	23	0.09	262114	44	0.17	259535	64	0.25
	Circuit 12	134629	13	0.10	133451	20	0.15	133777	13	0.10
	Circuit 13	298584	50	0.17	298184	58	0.19	297794	67	0.22
	Circuit 20	231967	21	0.09	231065	25	0.11	221417	30	0.14
SunCoast Total		927011	107	0.12	924814	147	0.16	912523	174	0.19
Statewide Total		4142498	480	0.12	4121741	788	0.19	4009221	935	0.23

Data Sources: September 2013 Florida Department of Children and Families, Office of Child Welfare, Protective Investigations Trend Report Child Population and Florida Department of Children and Families, Office of Child Welfare, Florida Safe Families Network (FSFN) Human Trafficking Calendar Year-to-Date Report 10/18/2013

General Human Trafficking Intake Information by Age

Information associated with the age of an alleged Human Trafficking victim at the time a Human Trafficking type child abuse report (initial and additional) was received and accepted by the Hotline shows a majority of the alleged Human Trafficking victims are between the ages of 14 and 17.



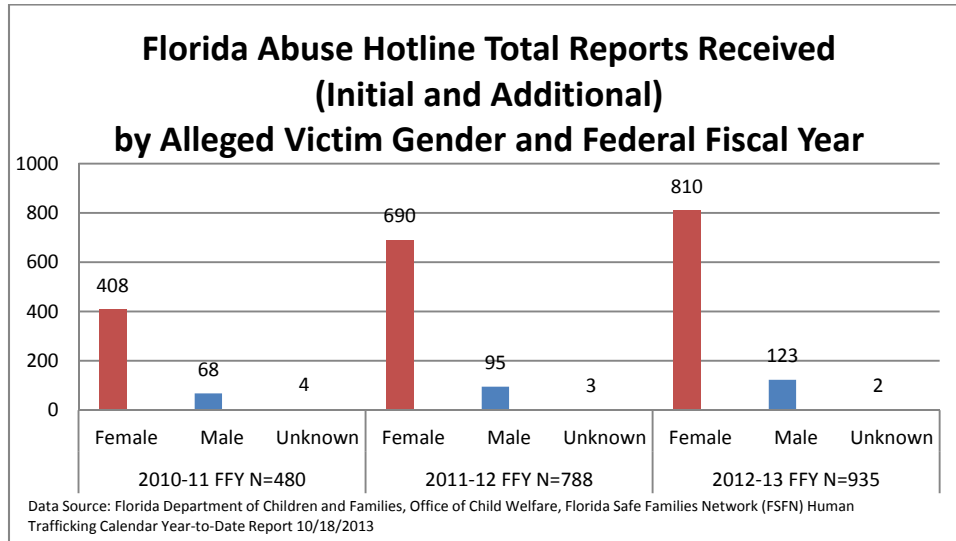
During FFY 2010-11, 67.5% of all child abuse reports containing an allegation of Human Trafficking involved a teen who was between 14 and 17 years of age. By FFY 2012-13, the percentage of alleged Human Trafficking victims between 14-17 years of age at the time a report was received and accepted

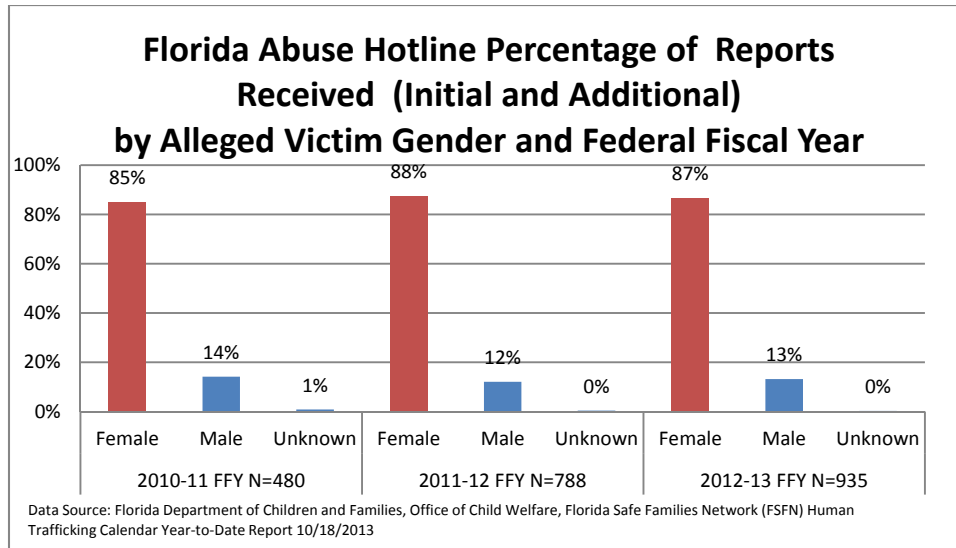
increased to 77.5%. While 16 years of age remains the most common age for alleged Human Trafficking, victims 15 years of age have increased by 5.5% since FFY 2010-11.

Florida Abuse Hotline Percentage of Human Trafficking Reports Received (Initial and Additional) by Age and Federal Fiscal Year				
FFY	Age 14	Age 15	Age 16	Age 17
2010-11 N=480	12.7%	15.8%	21.3%	17.7%
2011-12 N=788	13.2%	15.2%	22.6%	17.0%
2012-13 N=935	15.1%	21.3%	22.9%	18.3%

General Human Trafficking Intake Information by Gender

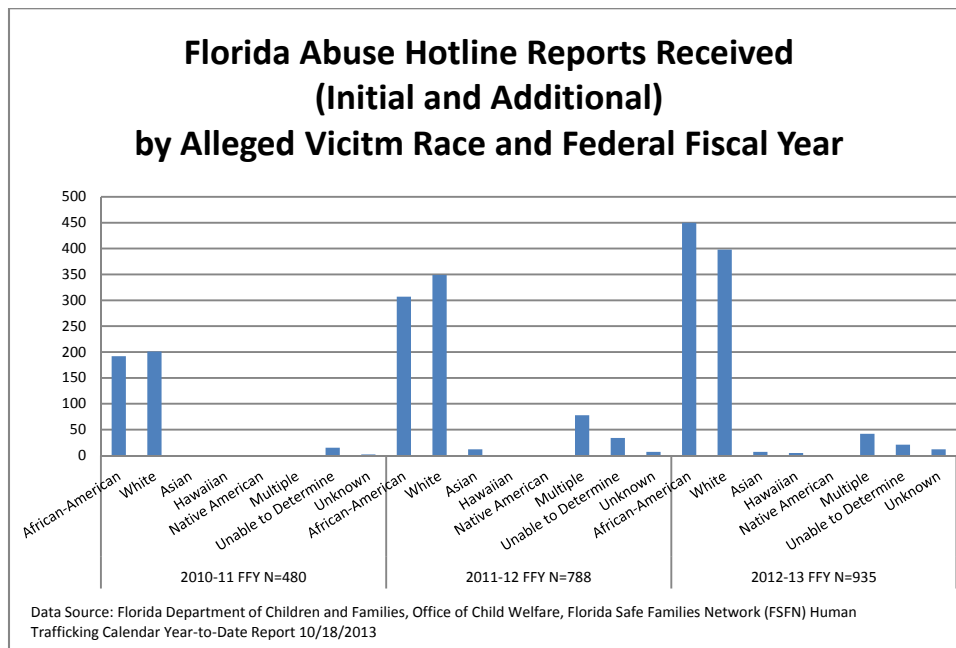
A review of data associated with the gender of alleged Human Trafficking victims shows a distinct bias toward females. Between 85% and 88% of all child abuse reports (initial and additional) received and accepted by the Hotline in which a Human Trafficking allegation was present involved females.

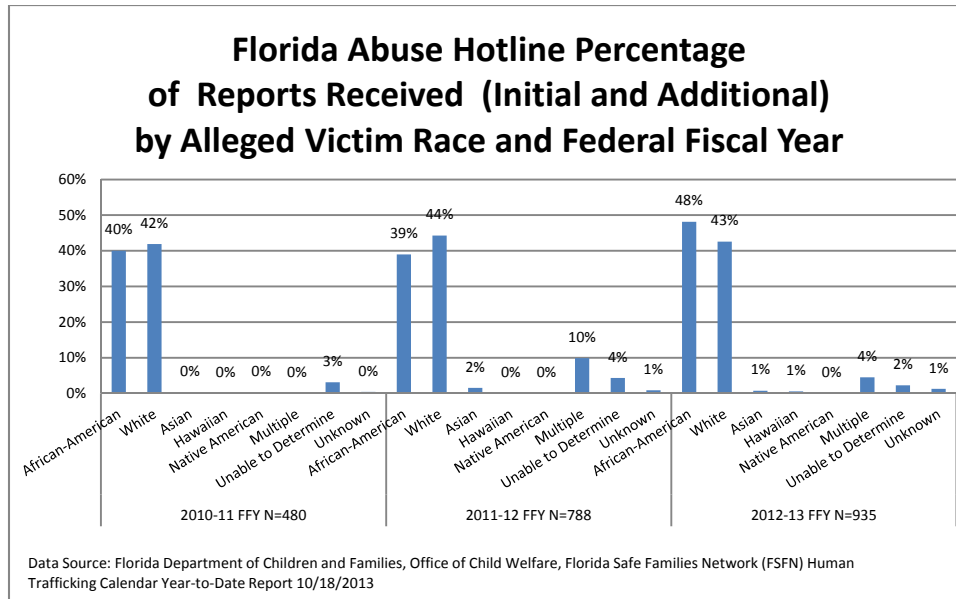




General Human Trafficking Intake Information by Race

Between 82% and 91% of child abuse reports (initial and additional) received and accepted by the Hotline in which a Human Trafficking allegation was present involved children who were categorized either as African-American or White within the FSFN data system. Between FFY 2010-11 and FFY 2012-13, the percentage of African-American children in these reports increased from 40% to 48%.





2012-2013 Federal Fiscal Year (FFY) Human Trafficking Intake Information by Human Trafficking Type and Area

As noted earlier, on January 1, 2013, in support of Florida’s Safe Harbor Act, the FDCF began to classify child abuse reports containing an allegation of Human Trafficking into one of three primary categories:

- *Human Trafficking-Commercial Sexual Exploitation of a Child (CSEC) Non-caregiver:* This maltreatment type is used for those cases in which the allegations appear to involve commercial sexual exploitation of a child (e.g., adult entertainment clubs, escort services, prostitution, etc.), and the alleged perpetrator is not considered to be a parent, legal guardian, or caregiver.
- *Human Trafficking-Commercial Sexual Exploitation of a Child (CSEC) Caregiver:* This maltreatment type is used for those cases in which the allegations appear to involve commercial sexual exploitation of a child (e.g., adult entertainment, escort services, prostitution, etc.), and the alleged perpetrator appears to be a parent, legal guardian, or caregiver.
- *Human Trafficking-Labor:* This maltreatment type is used in those cases in which the allegations appear to involve issues associated with labor trafficking, slavery, or servitude that do not appear to be sexual in nature.

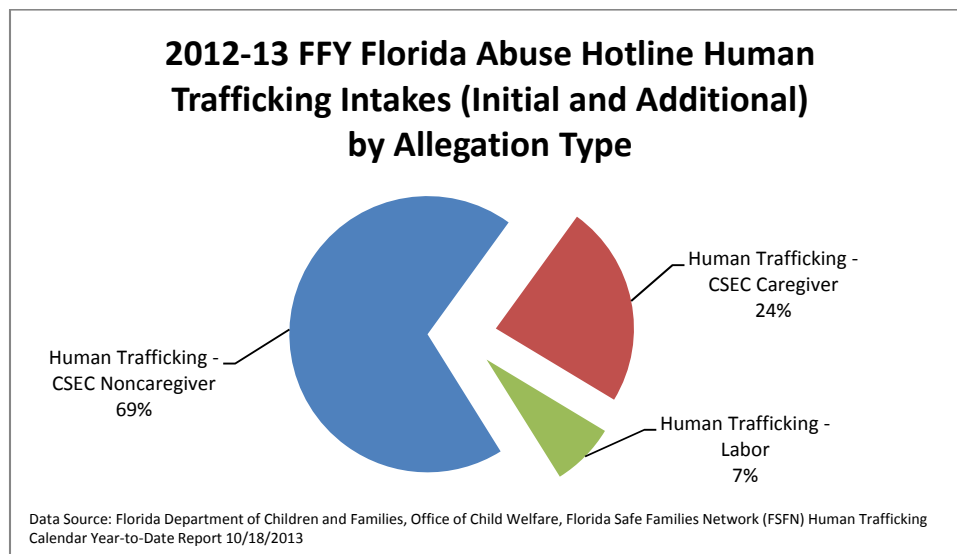
2012-13 FFY Florida Abuse Hotline Human Trafficking Child Abuse Reports Received and Accepted (Initial and Additional) where an Allegation of Human Trafficking was Present by Region/Circuit and Human Trafficking Allegation Type					
Region	Circuit	Human Trafficking - CSEC Noncaregiver	Human Trafficking - CSEC Caregiver	Human Trafficking - Labor	Total
Central	Circuit 05	9	2	1	12
	Circuit 09	86	14	39	139

	Circuit 10	33	15	0	48
	Circuit 18	24	13	2	39
Central Total		152	44	42	238
Northeast	Circuit 03	1	3	0	4
	Circuit 04	36	23	1	60
	Circuit 07	17	14	1	32
	Circuit 08	7	3	2	12
Northeast Total		61	43	4	108
Northwest	Circuit 01	6	13	3	22
	Circuit 02	7	6	0	13
	Circuit 14	3	11	0	14
Northwest Total		16	30	3	49
Southeast	Circuit 15	29	5	6	40
	Circuit 17	124	27	1	152
	Circuit 19	27	9	0	36
Southeast Total		180	41	7	228
Southern	Circuit 11	109	14	6	129
	Circuit 16	8	1	0	9
Southern Total		117	15	6	138
SunCoast	Circuit 06	43	18	3	64
	Circuit 12	5	8	0	13
	Circuit 13	58	4	5	67
	Circuit 20	12	18	0	30
SunCoast Total		118	48	8	174
Statewide Total		644	221	70	935

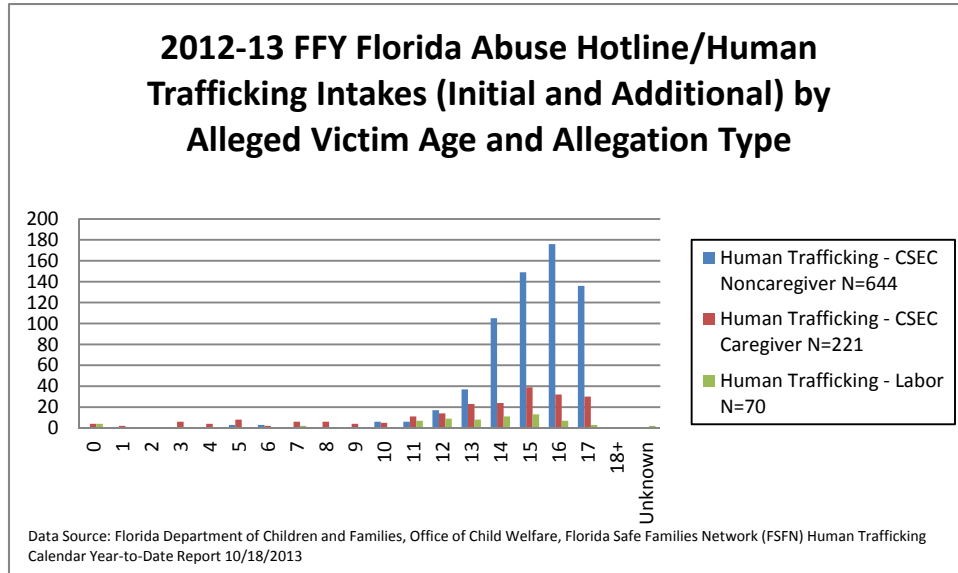
Data Source: Florida Department of Children and Families Office of Child Welfare, Florida Safe Families Network (FSFN) Human Trafficking Calendar Year-to-Date Report 10/18/2013

As the below table shows, in FFY 2012-13, nearly 70% of all child abuse reports received and accepted by the Hotline involved allegation of Human Trafficking-CSEC Non-caregiver. This means that the majority Human Trafficking reports involved allegations where the alleged perpetrator was either unknown, or not considered to be a parent, guardian, or caregiver.

The percentage distribution for all such FFY 2012-13 child abuse reports (initial and additional) that were received and accepted by the Hotline is displayed below by Human Trafficking allegation type.



For FFY 2012-13, Human Trafficking child abuse reports received and accepted by the Hotline primarily involved teens between the ages of 14 and 17.

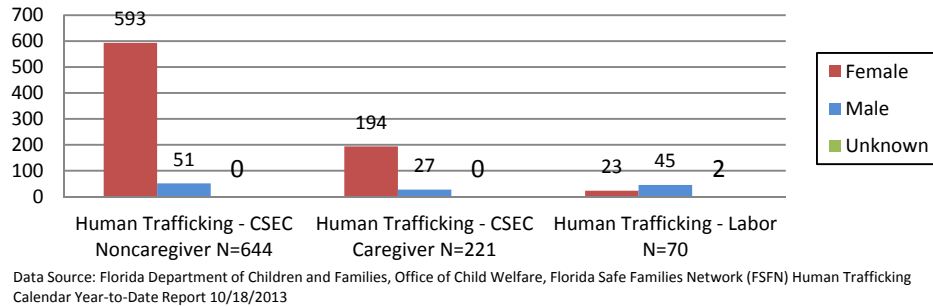


However, the average age of alleged victims varies across the three Human Trafficking allegation types. For FFY 2012-13, the average age of alleged victims for each of the three Human Trafficking allegation types was:

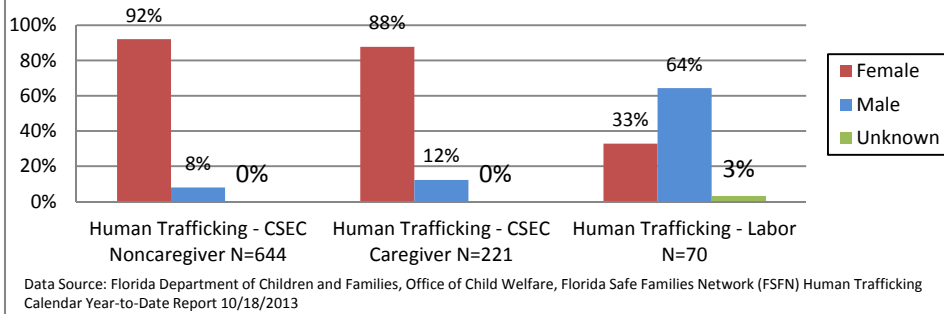
Category	Average Age of Alleged Victim
Human Trafficking - CSEC Noncaregiver	15
Human Trafficking - CSEC Caregiver	12
Human Trafficking - Labor	12

For FFY 2012-13, alleged female victims dominated CSEC categories. Females accounted for 92% of all reports in the Human Trafficking - CSEC Non-caregiver category, and 88% of all reports in the Human Trafficking - CSEC Caregiver category. However, males accounted for 64% of the alleged victims in the Human Trafficking-Labor category.

2012-13 FFY Florida Abuse Hotline/Human Trafficking Intakes (Initial and Additional) by Alleged Victim Gender and Allegation Type

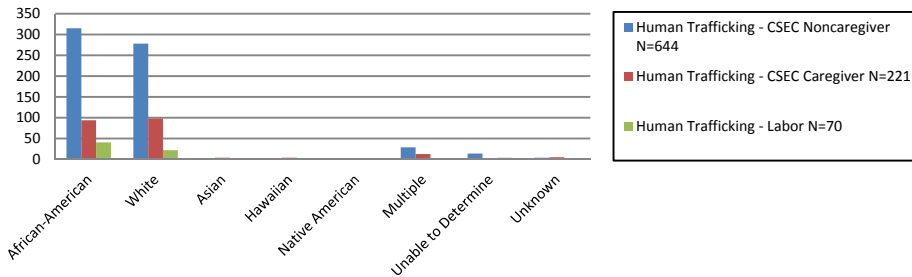


2012-13 FFY Percentage of Florida Abuse Hotline Human Trafficking Intakes (Initial and Additional) by Alleged Victim Gender and Human Trafficking Allegation Type



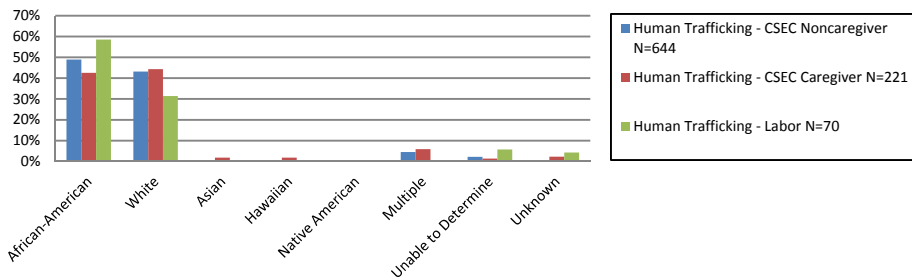
For FFY 2012-13, approximately 90% of alleged Human Trafficking victims across all three categories were identified as either African-American or White within the FSFN system.

2012-13 FFY Florida Abuse Hotline/Human Trafficking Intakes (Initial and Additional) by Alleged Victim Race and Allegation Type



Data Source: Florida Department of Children and Families, Office of Child Welfare, Florida Safe Families Network (FSFN) Human Trafficking Calendar Year-to-Date Report 10/18/2013

2012-13 FFY Percentage of Florida Abuse/Hotline Human Trafficking Intakes (Initial and Additional) by Alleged Victim Race and Allegation Type



Data Source: Florida Department of Children and Families, Office of Child Welfare, Florida Safe Families Network (FSFN) Human Trafficking Calendar Year-to-Date Report 10/18/2013

Human Trafficking Intake Conclusions

The increase in the total number of child abuse reports (initial and additional) received and accepted by the Hotline in which an allegation of Human Trafficking was present - from 480 in FFY 2010-11 to 935 in FFY 2012-13 (95% increase) - is significant. This dramatic increase shows that both public awareness efforts and training provided to social services workers, health care providers, and law enforcement officers have improved identification of potential Human Trafficking victims.

However, the total volume of these types of child abuse reports received and accepted by the Hotline account for only 0.53% of the Hotline’s total child abuse report volume during FFY 2012-13.

The above data also allows for a generalized profile of the average Florida Human Trafficking victim that is being reported to the Hotline. In general, potential Human Trafficking victims who are reported to the Hotline tend to:

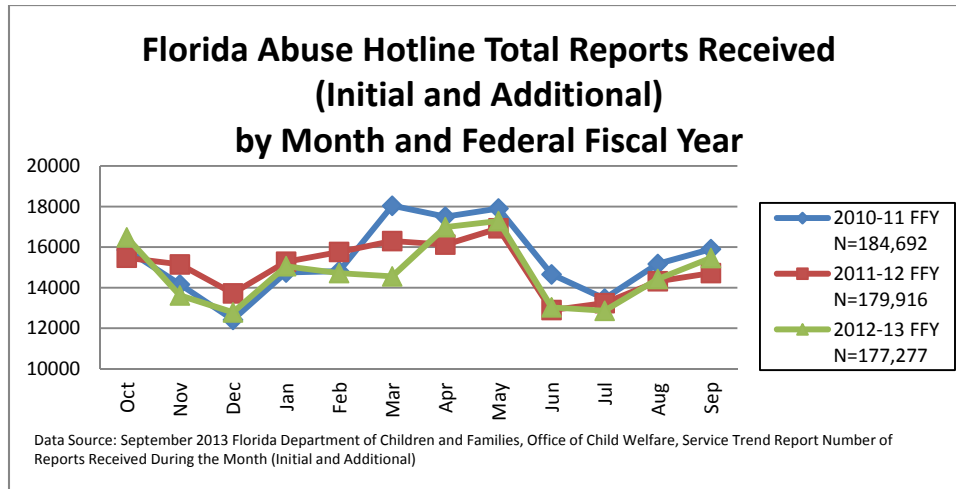
- be located in larger urban areas;
- have allegations in which the alleged perpetrator is either unknown or not considered to be a parent, guardian or caregiver;
- be teens between the ages of 14-17;
- be female; and
- be split fairly evenly between African-Americans and Whites in the case of the dominant allegation type of Human Trafficking-CSEC Non-caregiver.

2. Florida Department of Children and Families Investigation of Human Trafficking Child Abuse Reports (Initial and Additional)

Prior to FFY 2008-09, the FDCF investigated child abuse allegations of Sexual Abuse-Sexual Exploitation only in which the alleged perpetrator was considered to be a parent, guardian or caregiver. Over the course of FFY 2008-09, FDCF child abuse investigative responsibilities were expanded to include Human Trafficking allegations in which the alleged perpetrator was not considered to be a parent, guardian, or caregiver. The FDCF involvement in the investigation of Human Trafficking allegations continued with the implementation of Florida's Safe Harbor Act on January 1, 2013.

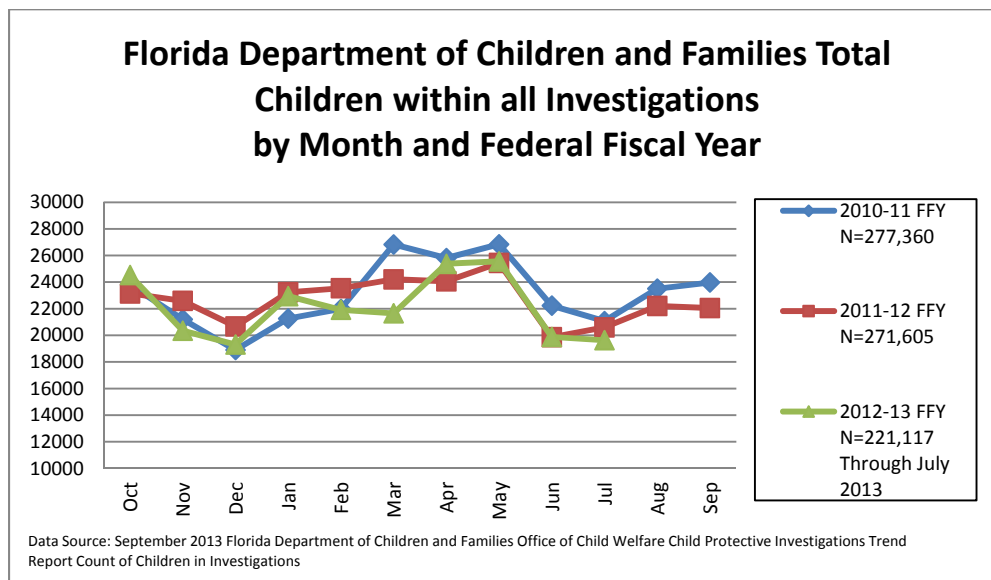
General Investigation Information

Over the last three Federal Fiscal Years, the Hotline has received and accepted roughly 180,000 child abuse reports annually (initial and additional).



While the above totals represent the counts for the number of child abuse reports that were received and accepted by the Hotline, they do not establish the total number of children who were represented within these reports. Total counts for the numbers of children contained within all child abuse reports received and accepted by the Hotline are currently available for 2010-11 and 2011-12 FFYs. A partial count for the total number of children within all child abuse reports received and accepted by the Hotline for FFY 2012-13 is currently available (October 2012 to July 2013). The complete data for both child counts and child abuse investigation results for FFY 2012-13 will be available in late December 2013.

For FFY 2010-11 and FFY 2011-12, the annual average total number of children included in all child abuse investigations was approximately 275,000. As child investigation counts for 2012-13 FFY are completed, the FDCF expects that similar to slightly lower numbers will be observed for FFY 2012-13.

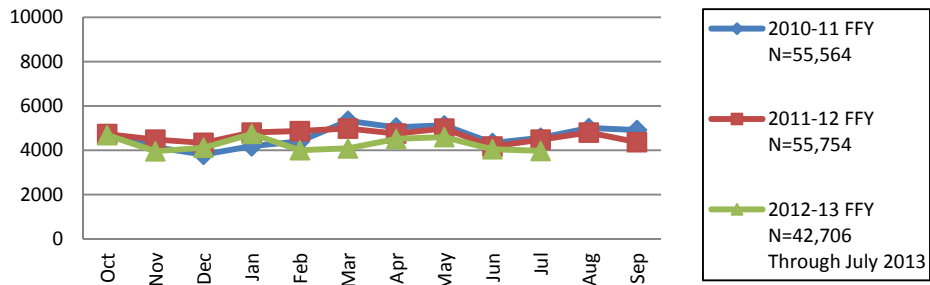


The FDCF categorizes child abuse investigative findings in three categories:

- *VERIFIED*: This finding is used when a preponderance of the credible evidence results in a determination that the specific harm or threat of harm was the result of abuse, abandonment or neglect.
- *NOT SUBSTANTIATED*: This finding is used when there is credible evidence, which does not meet the standard of being a preponderance, to support that the specific harm was the result of abuse, abandonment, or neglect.
- *NO INDICATORS*: This finding is used when there is no credible evidence to support the allegations of abuse, abandonment, or neglect.

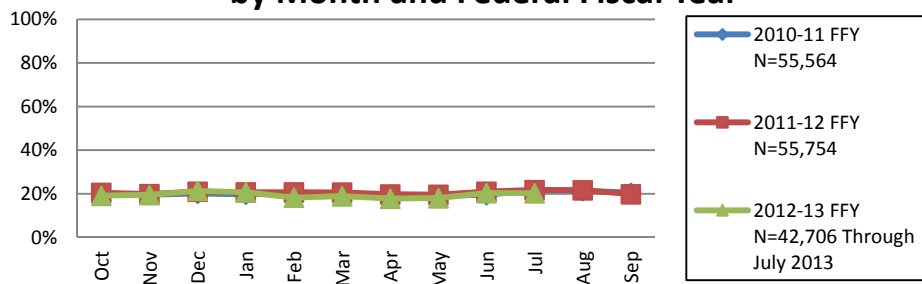
Both the number and percentage of children who have a most serious child abuse investigative finding of Verified has remained relatively consistent for the last three FFYs. Approximately 20% of children who are subjects of a Florida child abuse investigation have a most serious finding of Verified.

Florida Department of Children and Families Total Children within all Investigations with a Most Serious Finding of Verified by Month and Federal Fiscal Year



Data Source: September 2013 Florida Department of Children and Families, Office of Child Welfare, Child Protective Investigations Trend Report Count of Investigations with a Most Serious Finding of Verified

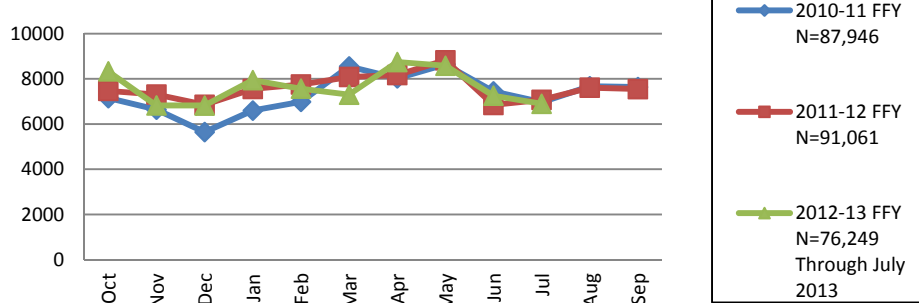
Florida Department of Children and Families Percentage of Children within all Investigations with a Most Serious Finding of Verified by Month and Federal Fiscal Year



Data Source: September 2013 Florida Department of Children and Families, Office of Child Welfare, Child Protective Investigations Trend Report Count of Investigations with a Most Serious Finding of Verified

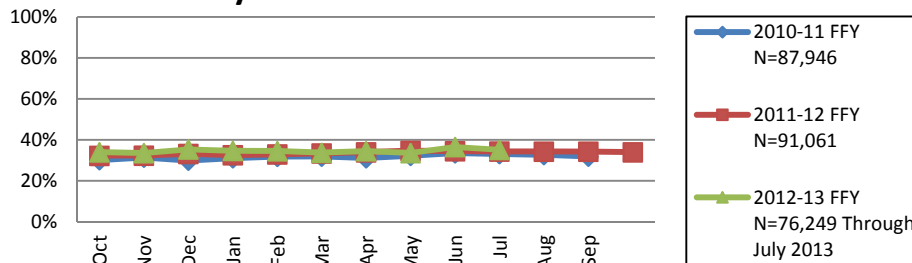
Both the number and percentage of children who have a most serious investigative finding of Not Substantiated have remained relatively consistent for the last three FFYs. Approximately 34% of children who are subjects of a Florida child abuse investigation have a most serious finding of Not Substantiated.

**Florida Department of Children and Families
Total Children within all Investigations with a
Most Serious Finding of Not Substantiated
by Month and Federal Fiscal Year**



Data Source: September 2013 Florida Department of Children and Families, Office of Child Welfare, Child Protective Investigations Trend Report Count of Investigations with a Most Serious Finding of Not Substantiated

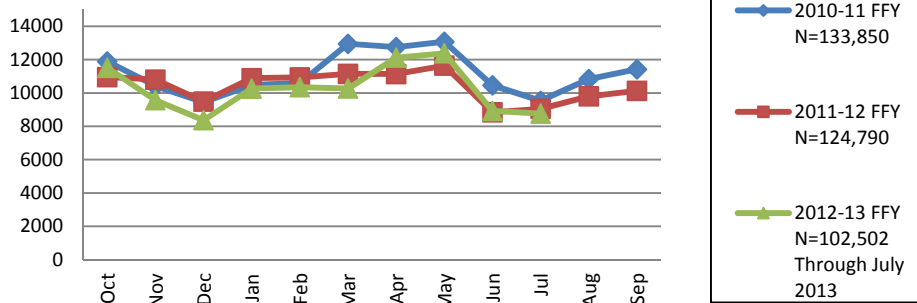
**Florida Department of Children and Families
Percentage of Children within all Investigations
with a Most Serious Finding of
Not Substantiated
by Month and Federal Fiscal Year**



Data Source: September 2013 Florida Department of Children and Families, Office of Child Welfare, Child Protective Investigations Trend Report Count of Investigations with a Most Serious Finding of Not Substantiated

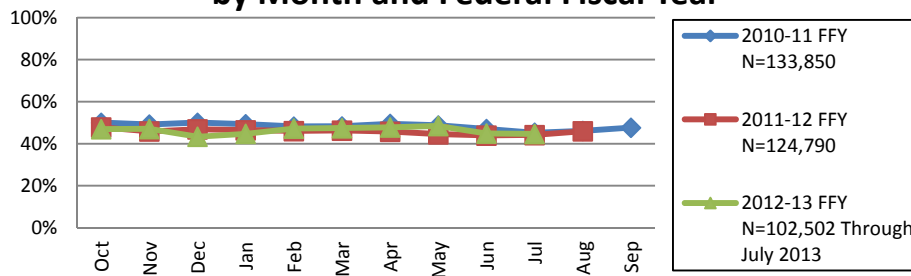
Both the number and percentage of children who have a most serious child abuse investigative finding of No Indicator has remained relatively consistent for the last three FFYs. Approximately 46% of children who are subjects within a Florida child abuse investigation have a most serious finding of No Indicator.

Florida Department of Children and Families Total Children with a Most Serious Finding of No Indicator by Month and Federal Fiscal Year



Data Source: September 2013 Florida Department of Children and Families, Office of Child Welfare, Child Protective Investigations Trend Report Count of Investigations with a Most Serious Finding of No Indicator

Florida Department of Children and Families Percentage of Children within all Investigations with a Most Serious Finding of No Indicator by Month and Federal Fiscal Year



Data Source: September 2013 Florida Department of Children and Families, Office of Child Welfare, Child Protective Investigations Trend Report Count of Investigations with a Most Serious Finding of No Indicator

Translating the total number of child abuse reports that were received and accepted by the Hotline in which an allegation of Human Trafficking was present into an actual child count is problematic. This is due to the fact that Human Trafficking allegations have not been uniformly coded with the Florida Safe Families Network (FSFN) across all three FFYs being reviewed in this report. As such, some investigations may have had multiple Human Trafficking allegations contained within a single investigation. In addition, many of these investigations may contain multiple Human Trafficking allegations that can vary slightly based on who reported the allegation, where the allegation occurred, the identity of the alleged predator, and the exact nature of the alleged abuse.

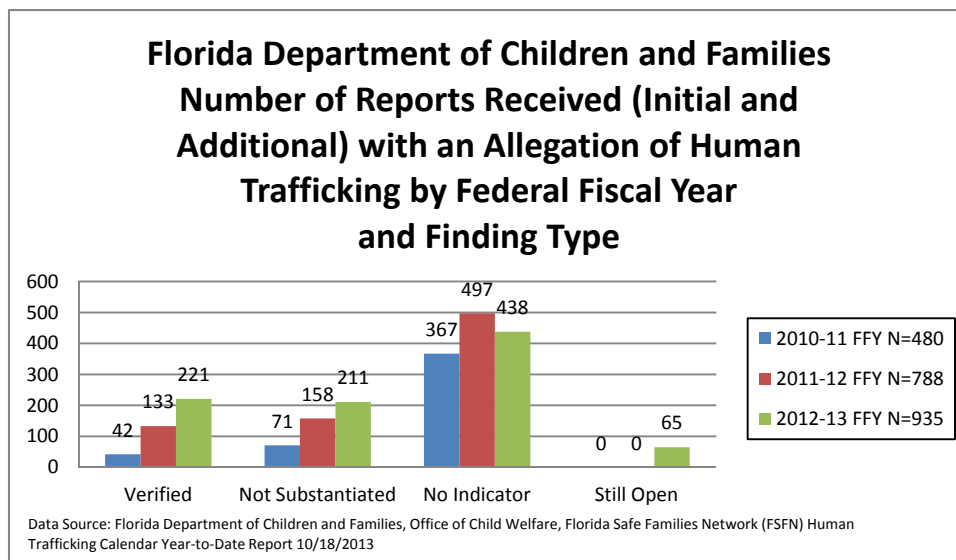
The information below provides a comparison of the number of child abuse reports received and accepted in which an allegation of Human Trafficking was present, the total number of alleged victims

contained within these reports, and the total number of unique investigations that were conducted in which an allegation of Human Trafficking was present.

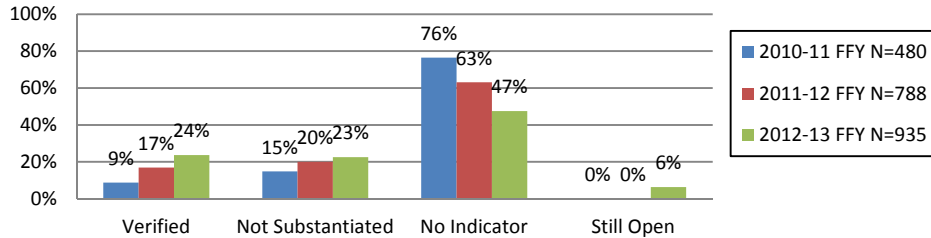
Number of Child Abuse Reports Received with an Allegation of Human Trafficking/Number of Children Contained within These Reports/Number of Unique Investigations			
FFY	Total Child Abuse Reports Received (Initial and Additional) with an Allegation of Human Trafficking	Total Unique Child Person Numbers	Total Unique Intake Numbers/Investigations
2010-11 FFY	480	395	358
2011-12 FFY	788	615	666
2012-13 FFY	935	713	666

In an effort to provide general consistency within this report, the total number of reports received (initial and additional) in which an allegation of Human Trafficking was present will be utilized for the analysis of child abuse investigative findings in which a Human Trafficking allegation is present.

As the charts below show, the percentage of FDCF child abuse investigative findings associated with allegations of Human Trafficking did not align with the with all child abuse maltreatment types for FFY 2010-11 and FFY 2011-12. Both Verified and Not Substantiated Human Trafficking findings were markedly lower, and No Indicators were substantially higher when compared with other child abuse maltreatment types. Over the course of FFY 2012-13, both Human Trafficking Verified and No Indicator findings have become better aligned with the general child abuse maltreatment findings, which indicates improved Human Trafficking identification at the FDCF investigative level.



**Florida Department of Children and Families
Percentage of Reports Received
(Initial and Additional) with an Allegation of
Human Trafficking by Federal Fiscal Year
and Finding Type**



Data Source: Florida Department of Children and Families, Office of Child Welfare, Florida Safe Families Network (FSFN) Human Trafficking Calendar Year-to-Date Report 10/18/2013

Human Trafficking Findings Information by Human Trafficking Type and Area

FDCF Verified findings of Human Trafficking allegations show a distinct bias towards verification within FDCF Circuits that contain one of Florida’s larger urban areas. For FFY 2012-13, the four FDCF Circuits that exceeded the observed statewide Verified findings percentage of 23.6% were all FDCF Circuits containing one of Florida’s larger urban areas.

- 45.3% FDCF Central Region/Circuit 9 (Orange and Osceola Counties) - Orlando
- 36.2% FDCF SunCoast Region/Circuit 17 (Broward County) - Ft. Lauderdale
- 28.7% FDCF Southern Region/Circuit 11 (Miami-Dade County) - Miami
- 25.4% FDCF SunCoast Region/Circuit 13 (Hillsborough County) – Tampa

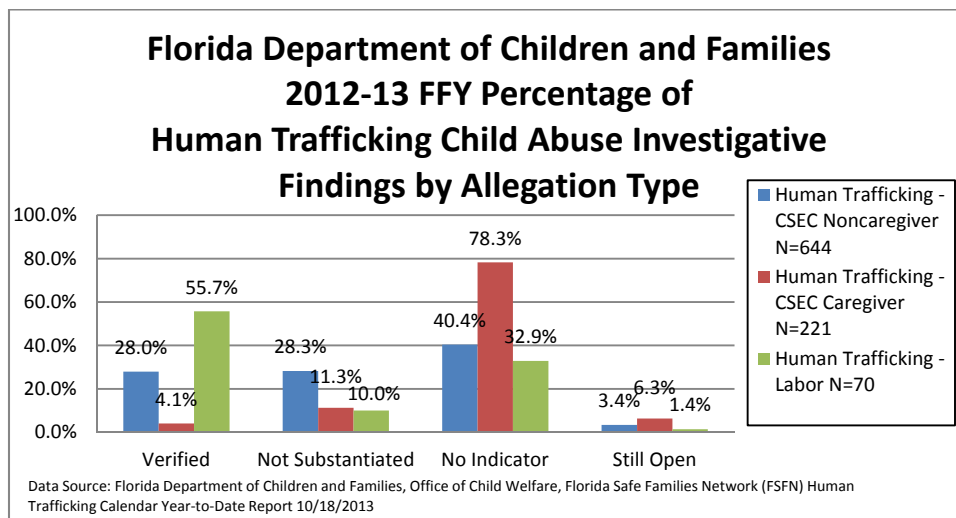
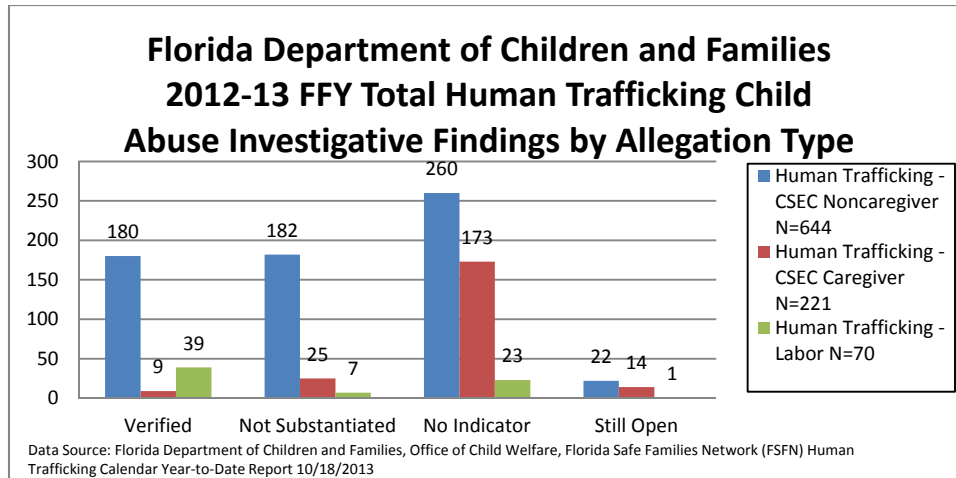
FDCF Human Trafficking finding totals and percentages by FDCF Region/Circuit for each of the three FFYs under review is provided on the next page.

Investigative Finding Totals all for Human Trafficking Intakes (Initial and Additional) by FDCF Region/Circuit and FFY														
Region	Circuit	2010-11 FFY				2011-12 FFY				2012-13 FFY				
		Verified	Not Substantiated	No Indicator	Total	Verified	Not Substantiated	No Indicator	Total	Verified	Not Substantiated	No Indicator	Still Open	Total
Central	Circuit 05	1	1	17	19	4	1	19	24	0	0	12	0	12
	Circuit 09	7	8	49	64	23	22	47	92	63	27	34	15	139
	Circuit 10	3	1	12	16	3	10	24	37	7	10	27	4	48
	Circuit 18	1	0	11	12	14	2	25	41	7	10	22	0	39
Central Total		12	10	89	111	44	35	115	194	77	47	95	19	238
Northeast	Circuit 03	0	0	6	6	0	0	5	5	0	2	2	0	4
	Circuit 04	6	1	17	24	7	2	23	32	6	10	42	2	60
	Circuit 07	2	1	13	16	3	10	25	38	4	2	25	1	32
	Circuit 08	2	0	5	7	2	1	8	11	1	2	7	2	12
Northeast Total		10	2	41	53	12	13	61	86	11	16	76	5	108
Northwest	Circuit 01	0	0	13	13	0	2	21	23	0	2	19	1	22
	Circuit 02	0	1	3	4	0	0	13	13	1	4	8	0	13
	Circuit 14	0	1	12	13	0	0	16	16	1	0	13	0	14
Northwest Total		0	2	28	30	0	2	50	52	2	6	40	1	49
Southeast	Circuit 15	1	1	24	26	8	11	23	42	4	10	22	4	40
	Circuit 17	1	13	37	51	44	25	51	120	55	43	38	16	152
	Circuit 19	0	1	14	15	2	4	10	16	5	11	18	2	36
Southeast Total		2	15	75	92	54	40	84	178	64	64	78	22	228
Southern	Circuit 11	7	22	58	87	8	41	77	126	37	40	45	7	129
	Circuit 16	0	0	0	0	0	5	5	5	0	6	3	0	9
Southern Total		7	22	58	87	8	41	82	131	37	46	48	7	138
SunCoast	Circuit 06	1	7	15	23	1	5	38	44	5	13	41	5	64
	Circuit 12	0	3	10	13	0	3	17	20	2	2	7	2	13
	Circuit 13	10	10	30	50	9	16	33	58	17	14	32	4	67
	Circuit 20	0	0	21	21	5	3	17	25	6	3	21	0	30
SunCoast Total		11	20	76	107	15	27	105	147	30	32	101	11	174
Statewide Total		42	71	367	480	133	158	497	788	221	211	438	65	935

Data Source: Florida Department of Children and Families, Office of Child Welfare, Florida Safe Families Network (FSFN) Human Trafficking Calendar Year-to-Date Report 10/18/2013

2012-2013 Federal Fiscal Year (FFY) Human Trafficking Investigative Information by Human Trafficking Type

For FFY 2012-13, acts of CSEC that were allegedly committed by a non-caregiver were the primary Human Trafficking child abuse allegation and child abuse investigation type. For FFY 2012-13, 644 of the 935 (69%) of all child abuse intakes and child abuse investigations in which an allegation of Human Trafficking was present involved non-caregiver based Human Trafficking-CSEC allegations. The statewide percentage of child abuse investigations that resulted in Verified findings of child abuse for allegations identified as a Human Trafficking – CSEC Non-caregiver stood at 28%.



In FFY 2012-13, several less densely populated FDCF Circuits (Circuits 12 and 20) exceeded the 28% statewide average for Verified findings associated with allegations of Human Trafficking – CSEC Non-caregiver. However, the primary areas of the state that had Verified findings associated with allegations of Human Trafficking – CSEC Non-caregiver that exceeded the statewide average were concentrated within FDCF Circuits that contained one of Florida’s larger urban centers.

- 42.7% FDCF Southeast Region/Circuit 17 (Broward County) - Ft. Lauderdale
- 41.7% FDCF SunCoast Region/Circuit 20 (Charlotte, Collier, Glades, Hendry and Lee Counties)
- 40.0% FDCF SunCoast Region/Circuit 12 (DeSoto, Manatee, and Sarasota Counties)
- 33.9% FDCF Southern Region/Circuit 11 (Miami-Dade County) – Miami
- 31.4% FDCF Central Region/Circuit 9 (Orange and Osceola and Counties) – Orlando
- 29.3% FDCF SunCoast Region/Circuit 13 (Hillsborough County) – Tampa

Both the total number and percentages of child abuse investigative findings for allegation associated with Human Trafficking - CSEC Non-caregiver by FDCF Region/Circuit for FFY 2012-13 are provided below.

2012-13 FFY Human Trafficking - CSEC Noncaregiver Child Abuse Investigative Findings Totals						
Region	Circuit	Verified	Not Substantiated	No Indicator	Still Open	Human Trafficking - CSEC Noncaregiver Total
Central	Circuit 05	0	0	9	0	9
	Circuit 09	27	25	23	11	86
	Circuit 10	7	5	17	4	33
	Circuit 18	5	8	11	0	24
Central Total		39	38	60	15	152
Northeast	Circuit 03	0	1		0	1
	Circuit 04	5	9	21	1	36
	Circuit 07	2	0	14	1	17
	Circuit 08	1	1	3	2	7
Northeast Total		8	11	38	4	61
Northwest	Circuit 01	0	1	5	0	6
	Circuit 02	1	3	3	0	7
	Circuit 14	0	0	3	0	3
Northwest Total		1	4	11	0	16
Southeast	Circuit 15	3	10	14	2	29
	Circuit 17	53	42	19	10	124
	Circuit 19	5	9	11	2	27
Southeast Total		61	61	44	14	180
Southern	Circuit 11	37	31	34	7	109
	Circuit 16	0	6	2	0	8
Southern Total		37	37	36	7	117
SunCoast	Circuit 06	3	13	26	1	43
	Circuit 12	2	2	1	0	5
	Circuit 13	17	11	28	2	58
	Circuit 20	5	2	5	0	12
SunCoast Total		27	28	60	3	118
Statewide Total		173	179	249	43	644

Data Source: Florida Department of Children and Families, Office of Child Welfare, Florida Safe Families Network (FSFN) Human Trafficking Calendar Year-to-Date Report 10/18/2013

2012-13 FFY Human Trafficking - CSEC Noncaregiver Child Abuse Investigative Findings Percentage						
Region	Circuit	Verified	Not Substantiated	No Indicator	Still Open	Human Trafficking - CSEC Noncaregiver Total
Central	Circuit 05	0.0%	0.0%	100.0%	0.0%	100.0%
	Circuit 09	31.4%	29.1%	26.7%	12.8%	100.0%
	Circuit 10	21.2%	15.2%	51.5%	12.1%	100.0%
	Circuit 18	20.8%	33.3%	45.8%	0.0%	100.0%
Central Total		25.7%	25.0%	39.5%	9.9%	100.0%
Northeast	Circuit 03	0.0%	100.0%	0.0%	0.0%	100.0%
	Circuit 04	13.9%	25.0%	58.3%	2.8%	100.0%
	Circuit 07	11.8%	0.0%	82.4%	5.9%	100.0%
	Circuit 08	14.3%	14.3%	42.9%	28.6%	100.0%
Northeast Total		13.1%	18.0%	62.3%	6.6%	100.0%
Northwest	Circuit 01	0.0%	16.7%	83.3%	0.0%	100.0%
	Circuit 02	14.3%	42.9%	42.9%	0.0%	100.0%
	Circuit 14	0.0%	0.0%	100.0%	0.0%	100.0%
Northwest Total		6.3%	25.0%	68.8%	0.0%	100.0%
Southeast	Circuit 15	10.3%	34.5%	48.3%	6.9%	100.0%
	Circuit 17	42.7%	33.9%	15.3%	8.1%	100.0%
	Circuit 19	18.5%	33.3%	40.7%	7.4%	100.0%
Southeast Total		33.9%	33.9%	24.4%	7.8%	100.0%
Southern	Circuit 11	33.9%	28.4%	31.2%	6.4%	100.0%
	Circuit 16	0.0%	75.0%	25.0%	0.0%	100.0%
Southern Total		31.6%	31.6%	30.8%	6.0%	100.0%
SunCoast	Circuit 06	7.0%	30.2%	60.5%	2.3%	100.0%
	Circuit 12	40.0%	40.0%	20.0%	0.0%	100.0%
	Circuit 13	29.3%	19.0%	48.3%	3.4%	100.0%
	Circuit 20	41.7%	16.7%	41.7%	0.0%	100.0%
SunCoast Total		22.9%	23.7%	50.8%	2.5%	100.0%
Statewide Total		26.9%	27.8%	38.7%	6.7%	100.0%

Data Source: Florida Department of Children and Families, Office of Child Welfare, Florida Safe Families Network (FSFN) Human Trafficking Calendar Year-to-Date Report 10/18/2013

For FFY 2012-13, acts of CSEC that were allegedly committed by a caregiver accounted for 24% of all Human Trafficking child abuse allegations and child abuse investigations. 221 of 935 (24%) of all child abuse intakes and child abuse investigations in which an allegation of Human Trafficking was present involved caregiver based CSEC allegations. The statewide percentage of child abuse investigations that resulted in Verified findings of child abuse for this allegation type stood at 4% (nine Verified). Only seven out of the 20 FDCF Circuits had at least one Verified finding of Human Trafficking where the perpetrator was consider to be a caregiver. Out of the nine Verified findings:

- Two involved mothers' boyfriends having inappropriate sexual relationships with the mothers' daughters that were commercial in nature. In both instances, the mothers had knowledge of the abuse. Both children were removed from the mothers care.

- One involved a mother who was prostituting her daughter. The child was removed.
- One involved a mother who was grooming her daughter to have sexual relations with the mother's boyfriend. The child was removed.
- One involved a father who acquired a prostitute for his teenage son during a visit. The mother was the primary caregiver and was not involved in the activity, so the child was not removed.
- One involved a stepfather who was sexual abusing his stepdaughter, and the mother had knowledge of the abuse. The child was removed.
- One involved an uncle who was sexually abusing his niece and was posting and selling images and video of the abuse on the internet without the mother's knowledge. The child was not removed from the mother.
- Two involved mothers who became involved in extremely abusive and exploitive relationships where the degree of physical and psychological abuse prevented the mothers from protecting the children until they were able to escape. The children were not removed, as the abuse had occurred two years earlier and out-of-state.

Both the total number and percentages of child abuse Investigative findings for allegations associated with Human Trafficking - CSEC Caregiver by FDCF Region/Circuit for FFY 2012-13 are provided on the next page.

2012-13 FFY Human Trafficking - CSEC Caregiver Total						
Region	Circuit	Verified	Not Substantiated	No Indicator	Still Open	Human Trafficking - CSEC Caregiver Total
Central	Circuit 05	0	0	2	0	2
	Circuit 09	0	2	8	4	14
	Circuit 10	0	5	10	0	15
	Circuit 18	1	2	10	0	13
Central Total		1	9	30	4	44
Northeast	Circuit 03	0	1	2	0	3
	Circuit 04	1	0	21	1	23
	Circuit 07	2	2	10	0	14
	Circuit 08	0	1	2	0	3
Northeast Total		3	4	35	1	43
Northwest	Circuit 01	0	1	11	1	13
	Circuit 02	0	1	5	0	6
	Circuit 14	1	0	10	0	11
Northwest Total		1	2	26	1	30
Southeast	Circuit 15	0	0	4	1	5
	Circuit 17	2	1	18	6	27
	Circuit 19	0	2	7	0	9
Southeast Total		2	3	29	7	41
Southern	Circuit 11	0	6	8	0	14
	Circuit 16	0	0	1	0	1
Southern Total			6	9		15
SunCoast	Circuit 06	1	0	13	4	18
	Circuit 12	0	0	6	2	8
	Circuit 13	0	0	2	2	4
	Circuit 20	1	1	16	0	18
SunCoast Total		2	1	37	8	48
Statewide Total		9	25	166	21	221

Data Source: Florida Department of Children and Families, Office of Child Welfare, Florida Safe Families Network (FSFN) Human Trafficking Calendar Year-to-Date Report 10/18/2013

2012-13 FFY Human Trafficking - CSEC Caregiver Percentage						
Region	Circuit	Verified	Not Substantiated	No Indicator	Still Open	Human Trafficking - CSEC Noncaregiver Total
Central	Circuit 05	0.0%	0.0%	100.0%	0.0%	100.0%
	Circuit 09	0.0%	14.3%	57.1%	28.6%	100.0%
	Circuit 10	0.0%	33.3%	66.7%	0.0%	100.0%
	Circuit 18	7.7%	15.4%	76.9%	0.0%	100.0%
Central Total		2.3%	20.5%	68.2%	9.1%	100.0%
Northeast	Circuit 03	0.0%	33.3%	66.7%	0.0%	100.0%
	Circuit 04	4.3%	0.0%	91.3%	4.3%	100.0%
	Circuit 07	14.3%	14.3%	71.4%	0.0%	100.0%
	Circuit 08	0.0%	33.3%	66.7%	0.0%	100.0%
Northeast Total		7.0%	9.3%	81.4%	2.3%	100.0%
Northwest	Circuit 01	0.0%	7.7%	84.6%	7.7%	100.0%
	Circuit 02	0.0%	16.7%	83.3%	0.0%	100.0%
	Circuit 14	9.1%	0.0%	90.9%	0.0%	100.0%
Northwest Total		3.3%	6.7%	86.7%	3.3%	100.0%
Southeast	Circuit 15	0.0%	0.0%	80.0%	20.0%	100.0%
	Circuit 17	7.4%	3.7%	66.7%	22.2%	100.0%
	Circuit 19	0.0%	22.2%	77.8%	0.0%	100.0%
Southeast Total		4.9%	7.3%	70.7%	17.1%	100.0%
Southern	Circuit 11	0.0%	42.9%	57.1%	0.0%	100.0%
	Circuit 16	0.0%	0.0%	100.0%	0.0%	100.0%
Southern Total		0.0%	40.0%	60.0%	0.0%	100.0%
SunCoast	Circuit 06	5.6%	0.0%	72.2%	22.2%	100.0%
	Circuit 12	0.0%	0.0%	75.0%	25.0%	100.0%
	Circuit 13	0.0%	0.0%	50.0%	50.0%	100.0%
	Circuit 20	5.6%	5.6%	88.9%	0.0%	100.0%
SunCoast Total		4.2%	2.1%	77.1%	16.7%	100.0%
Statewide Total		4.1%	11.3%	75.1%	9.5%	100.0%

Data Source: Florida Department of Children and Families, Office of Child Welfare, Florida Safe Families Network (FSFN) Human Trafficking Calendar Year-to-Date Report 10/18/2013

For FFY 2012-13, acts of Labor Trafficking accounted for 7% of all Human Trafficking child abuse allegations and child abuse investigations. Seventy of 935 (7%) of all child abuse intakes and child abuse investigations in which an allegation of Human Trafficking was present involved Labor Trafficking allegations. Labor Trafficking allegations were highly concentrated within FDCF Circuit 9 (Orlando and Osceola Counties), with 39 of 70 (56%) of all labor trafficking child abuse allegations and investigations occurring within this FDCF Circuit. This high concentration was due to the presence of four large-scale door-to-door sales operations within FDCF Circuit 9 that were abusive and exploitive of the children. The operators continuously violated child labor laws by hiring youth who were 14 years of age or younger, and then failed to properly supervise or provide basic necessities to the youth (i.e., water, food, access to bathrooms). Thirty-six of the statewide total of 39 (92%) Verified labor trafficking allegations were

generated within FDCF Circuit 9, and all 36 of FDCF Circuit 9 Verified findings of Labor Trafficking involved children who were working for these door-to-door sales operations.

Both the total number and percentages of child abuse Investigative findings for allegations associated with Human Trafficking – Labor by FDCF Region/Circuit for FFY 2012-13 are provided below.

2012-13 FFY Human Trafficking - Labor Total						
Region	Circuit	Verified	Not Substantiated	No Indicator	Still Open	Human Trafficking - Labor Total
Central	Circuit 05	0	0	1	0	1
	Circuit 09	36	0	3	0	39
	Circuit 10	0	0	0	0	0
	Circuit 18	1	0	1	0	2
Central Total		37	0	5	0	42
Northeast	Circuit 03	0	0	0	0	0
	Circuit 04	0	1	0	0	1
	Circuit 07	0	0	1	0	1
	Circuit 08	0	0	2	0	2
Northeast Total			1	3	0	4
Northwest	Circuit 01	0	0	3	0	3
	Circuit 02	0	0	0	0	0
	Circuit 14	0	0	0	0	0
Northwest Total		0	0	3	0	3
Southeast	Circuit 15	1	0	4	1	6
	Circuit 17	0	0	1	0	1
	Circuit 19	0	0	0	0	0
Southeast Total		1	0	5	1	7
Southern	Circuit 11	0	3	3	0	6
	Circuit 16	0	0	0	0	0
Southern Total			3	3	0	6
SunCoast	Circuit 06	1	0	2	0	3
	Circuit 12	0	0	0	0	0
	Circuit 13	0	3	2	0	5
	Circuit 20	0	0	0	0	0
SunCoast Total		1	3	4	0	8
Statewide Total		39	7	23	1	70

Data Source: Florida Department of Children and Families, Office of Child Welfare, Florida Safe Families Network (FSFN) Human Trafficking Calendar Year-to-Date Report 10/18/2013

2012-13 FFY Human Trafficking - Labor Percentage						
Region	Circuit	Verified	Not Substantiated	No Indicator	Still Open	Human Trafficking - Labor Total
Central	Circuit 05	0.0%	0.0%	100.0%	0.0%	100.0%
	Circuit 09	92.3%	0.0%	7.7%	0.0%	100.0%
	Circuit 10	0.0%	0.0%	0.0%	0.0%	0.0%
	Circuit 18	50.0%	0.0%	50.0%	0.0%	100.0%
Central Total		88.1%	0.0%	11.9%	0.0%	100.0%
Northeast	Circuit 03	0.0%	0.0%	0.0%	0.0%	0.0%
	Circuit 04	0.0%	100.0%	0.0%	0.0%	100.0%
	Circuit 07	0.0%	0.0%	100.0%	0.0%	100.0%
	Circuit 08	0.0%	0.0%	100.0%	0.0%	100.0%
Northeast Total		0.0%	25.0%	75.0%	0.0%	100.0%
Northwest	Circuit 01	0.0%	0.0%	100.0%	0.0%	100.0%
	Circuit 02	0.0%	0.0%	0.0%	0.0%	0.0%
	Circuit 14	0.0%	0.0%	0.0%	0.0%	0.0%
Northwest Total		0.0%	0.0%	100.0%	0.0%	100.0%
Southeast	Circuit 15	16.7%	0.0%	66.7%	16.7%	100.0%
	Circuit 17	0.0%	0.0%	100.0%	0.0%	100.0%
	Circuit 19	0.0%	0.0%	0.0%	0.0%	0.0%
Southeast Total		14.3%	0.0%	71.4%	14.3%	100.0%
Southern	Circuit 11	0.0%	50.0%	50.0%	0.0%	100.0%
	Circuit 16	0.0%	0.0%	0.0%	0.0%	0.0%
Southern Total		0.0%	50.0%	50.0%	0.0%	100.0%
SunCoast	Circuit 06	33.3%	0.0%	66.7%	0.0%	100.0%
	Circuit 12	0.0%	0.0%	0.0%	0.0%	0.0%
	Circuit 13	0.0%	60.0%	40.0%	0.0%	100.0%
	Circuit 20	0.0%	0.0%	0.0%	0.0%	0.0%
SunCoast Total		12.5%	37.5%	50.0%	0.0%	100.0%
Statewide Total		55.7%	10.0%	32.9%	1.4%	100.0%

Data Source: Florida Department of Children and Families, Office of Child Welfare, Florida Safe Families Network (FSFN) Human Trafficking Calendar Year-to-Date Report 10/18/2013

3. 2012-2013 FFY Verified Human Trafficking Findings that Resulted in Removal from the Parent, Guardian or Caregiver

The removal of children from their parent, guardian, or caregiver for Verified findings of Human Trafficking was an uncommon occurrence over the course of FFY 2012-13. Only 28 of the 221(13%) Verified Human Trafficking findings resulted in the removal of the child from their parent, guardian, or caregiver. In 11 of the 28 removals, the parent, guardian or caregiver was either directly involved in the trafficking (six), or unable to protect the child adequately from exploitation (five).

Out of the 28 total Verified findings, the number of removals from a parent, guardian, or caregiver by Human Trafficking type were:

- 23 of 28 (78%) within Human Trafficking-CSEC Non-caregiver
- 4 of 28 (18%) within Human Trafficking-CSEC Caregiver
- 1 of 28 (4%) within Human Trafficking-Labor

FDCF Circuit 11 (Miami-Dade) accounted for 12 of 28 (43%) of the observed Human Trafficking removals from a parent, guardian, or caregiver. In two of these 12 instances, a parent, guardian, or caregiver was indirectly involved in trafficking of the child.

Both the total count and percentage of Verified Human Trafficking victims who were removed from their parent, guardian, or caregiver for allegations associated with Human Trafficking are provided below by FDCF Region/Circuit.

2012 2013 FFY Verified Human Trafficking Findings that Resulted in the Removal of the Child					
Region	Circuit	Removals Human Trafficking - CSEC Noncaregiver	Removals Human Trafficking - CSEC Caregiver	Removals Human Trafficking - Labor	Total Human Trafficking Removals
Central	Circuit 05	0	0	0	0
	Circuit 09	0	0	0	0
	Circuit 10	2	0	0	2
	Circuit 18	0	0	0	0
Central Total		2	0	0	2
Northeast	Circuit 03	0	0	0	0
	Circuit 04	0	0	0	0
	Circuit 07	0	0	0	0
	Circuit 08	0	0	0	0
Northeast Total		0	0	0	0
Northwest	Circuit 01	0	0	0	0
	Circuit 02	0	0	0	0
	Circuit 14	0	1	0	1
Northwest Total		0	1	0	1
Southeast	Circuit 15	2	0	1	3
	Circuit 17	5	1	0	6
	Circuit 19	0	0	0	0
Southeast Total		7	1	1	9
Southern	Circuit 11	12	0	0	12
	Circuit 16	0	0	0	0
Southern Total		12	0	0	12
SunCoast	Circuit 06	1	1	0	2
	Circuit 12	1	0	0	1
	Circuit 13	0	0	0	0
	Circuit 20	0	1	0	1
SunCoast Total		2	2	0	4
Statewide Total		23	4	1	28

Data Source: Florida Department of Children and Families, Office of Child Welfare, Florida Safe Families Network (FSFN) Human Trafficking Calendar Year-to-Date Report 10/18/2013

2012-13 FFY Percentage of Verified Human Trafficking Findings that Resulted in the Removal of the Child					
Region	Circuit	Removals Human Trafficking - CSEC Noncaregiver	Removals Human Trafficking - CSEC Caregiver	Removals Human Trafficking - Labor	Total Human Trafficking Removals
Central	Circuit 05	0.0%	0.0%	0.0%	0.0%
	Circuit 09	0.0%	0.0%	0.0%	0.0%
	Circuit 10	100.0%	0.0%	0.0%	100.0%
	Circuit 18	0.0%	0.0%	0.0%	0.0%
Central Total		100.0%	0.0%	0.0%	100.0%
Northeast	Circuit 03	0.0%	0.0%	0.0%	0.0%
	Circuit 04	0.0%	0.0%	0.0%	0.0%
	Circuit 07	0.0%	0.0%	0.0%	0.0%
	Circuit 08	0.0%	0.0%	0.0%	0.0%
Northeast Total		0.0%	0.0%	0.0%	0.0%
Northwest	Circuit 01	0.0%	0.0%	0.0%	0.0%
	Circuit 02	0.0%	0.0%	0.0%	0.0%
	Circuit 14	0.0%	100.0%	0.0%	100.0%
Northwest Total		0.0%	100.0%	0.0%	100.0%
Southeast	Circuit 15	66.7%	0.0%	33.3%	100.0%
	Circuit 17	83.3%	16.7%	0.0%	100.0%
	Circuit 19	0.0%	0.0%	0.0%	0.0%
Southeast Total		77.8%	11.1%	11.1%	100.0%
Southern	Circuit 11	100.0%	0.0%	0.0%	100.0%
	Circuit 16	0.0%	0.0%	0.0%	0.0%
Southern Total		100.0%	0.0%	0.0%	100.0%
SunCoast	Circuit 06	50.0%	50.0%	0.0%	100.0%
	Circuit 12	100.0%	0.0%	0.0%	100.0%
	Circuit 13	0.0%	0.0%	0.0%	0.0%
	Circuit 20	0.0%	100.0%	0.0%	100.0%
SunCoast Total		50.0%	50.0%	0.0%	100.0%
Statewide Total		82.1%	14.3%	3.6%	100.0%

Data Source: Florida Department of Children and Families, Office of Child Welfare, Florida Safe Families Network (FSFN) Human Trafficking Calendar Year-to-Date Report 10/18/2013

Children who were already under the care or supervision of a state child welfare agency accounted for 49 of 221 (22%) of the observed Verified Human Trafficking Findings for FFY 2012-13. Children within this category were generally considered habitual runaways who either became engaged in CSEC activities while on runaway status, or ran away from their placement to connect with and participate in CSEC activities. Two of the 49 children within this category were under the care or supervision of an out-of-state child welfare agency when they were located in Florida and subsequently returned to their home state.

Both the total count and percentage of Verified Human Trafficking victims who were already under the care or supervision of a state child welfare agency are provided on the next page by FDCF Region/Circuit.

2012-13 FFY Verified Human Trafficking Findings where the Child was Under the Care or Supervision of a State Child Welfare Agency				
Region	Circuit	Already Under the Care or Supervision of the State	Already Under the Care or Supervision of Another State	Total Already Under the Care of a State
Central	Circuit 05	0	0	0
	Circuit 09	4	0	4
	Circuit 10	2	0	2
	Circuit 18	1	0	1
Central Total		7	0	7
Northeast	Circuit 03	0	0	0
	Circuit 04	0	0	0
	Circuit 07	0	0	0
	Circuit 08	0	0	0
Northeast Total		0	0	0
Northwest	Circuit 01	0	0	0
	Circuit 02	0	0	0
	Circuit 14	0	0	0
Northwest Total		0	0	0
Southeast	Circuit 15	0	0	0
	Circuit 17	24	0	24
	Circuit 19	2	0	2
Southeast Total		26	0	26
Southern	Circuit 11	4	3	7
	Circuit 16	0	0	0
Southern Total		4	3	7
SunCoast	Circuit 06	0	0	0
	Circuit 12	0	0	0
	Circuit 13	8	0	8
	Circuit 20	1	0	1
SunCoast Total		9	0	9
Statewide Total		46	3	49

Data Source: Florida Department of Children and Families, Office of Child Welfare, Florida Safe Families Network (FSFN) Human Trafficking Calendar Year-to-Date Report 10/18/2013

2012-13 FFY Percentage of Verified Human Trafficking Findings where the Child was Under the Care or Supervision of a State Child Welfare Agency				
Region	Circuit	Already Under the Care or Supervision of the State	Already Under the Care or Supervision of Another State	Total Already Under the Care of a State
Central	Circuit 05	100.0%	0.0%	100.0%
	Circuit 09	100.0%	0.0%	100.0%
	Circuit 10	100.0%	0.0%	100.0%
	Circuit 18	0.0%	0.0%	0.0%
Central Total		100.0%	0.0%	100.0%
Northeast	Circuit 03	0.0%	0.0%	0.0%
	Circuit 04	0.0%	0.0%	0.0%
	Circuit 07	0.0%	0.0%	0.0%
	Circuit 08	0.0%	0.0%	0.0%
Northeast Total		0.0%	0.0%	0.0%
Northwest	Circuit 01	0.0%	0.0%	0.0%
	Circuit 02	0.0%	0.0%	0.0%
	Circuit 14	0.0%	0.0%	0.0%
Northwest Total		0.0%	0.0%	0.0%
Southeast	Circuit 15	0.0%	0.0%	0.0%
	Circuit 17	100.0%	0.0%	100.0%
	Circuit 19	100.0%	0.0%	100.0%
Southeast Total		100.0%	0.0%	100.0%
Southern	Circuit 11	57.1%	42.9%	100.0%
	Circuit 16	0.0%	0.0%	0.0%
Southern Total		57.1%	42.9%	100.0%
SunCoast	Circuit 06	0.0%	0.0%	0.0%
	Circuit 12	0.0%	0.0%	0.0%
	Circuit 13	100.0%	0.0%	100.0%
	Circuit 20	100.0%	0.0%	100.0%
SunCoast Total		100.0%	0.0%	100.0%
Statewide Total		93.9%	6.1%	100.0%

Data Source: Florida Department of Children and Families, Office of Child Welfare, Florida Safe Families Network (FSFN) Human Trafficking Calendar Year-to-Date Report 10/18/2013

During FFY 2012-13, Verified findings of Human Trafficking that did not result in the removal of a child accounted for 144 of the 221 (65%) observed Verified findings. This means that during FFY 2012-13, 65% of all Verified Human Trafficking allegations involved children who were not considered to be at risk of abuse, abandonment or neglect at the hands of their parent, guardian, or caregiver, even though the child had Verified findings of involvement in Human Trafficking activities.

Both the total count and percentage of Verified Human Trafficking victims who were not removed from their parent, guardian, or caregiver by FDCF Region/Circuit are provided on the next page.

2012-13 FFY Verified Human Trafficking Findings where the Child was Not removed from the parent, Guardian or Caregiver				
Region	Circuit	Not Removed from Their Parent, Guardian or Caregiver	Not Removed from Their Parent, Guardian or Caregiver Returned Out-of-State	Not Removed from Their Parent, guardian or Caregiver
Central	Circuit 05	0	0	0
	Circuit 09	59	0	59
	Circuit 10	4	0	4
	Circuit 18	4	0	4
Central Total		67	0	67
Northeast	Circuit 03	0	0	0
	Circuit 04	6	0	6
	Circuit 07	4	0	4
	Circuit 08	1	0	1
Northeast Total		11	0	11
Northwest	Circuit 01	0	0	0
	Circuit 02	1	0	1
	Circuit 14	0	0	0
Northwest Total		1	0	1
Southeast	Circuit 15	1	0	1
	Circuit 17	24	1	25
	Circuit 19	3	0	3
Southeast Total		28	1	29
Southern	Circuit 11	17	1	18
	Circuit 16	0	0	0
Southern Total		17	1	18
SunCoast	Circuit 06	3	0	3
	Circuit 12	1	0	1
	Circuit 13	9	0	9
	Circuit 20	5	0	5
SunCoast Total		18	0	18
Statewide Total		142	2	144

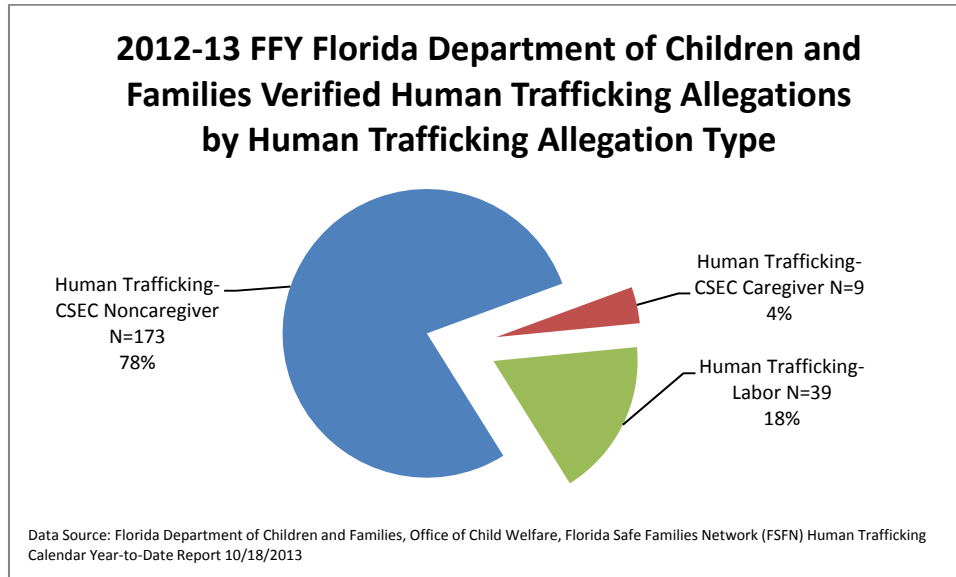
Data Source: Florida Department of Children and Families, Office of Child Welfare, Florida Safe Families Network (FSFN) Human Trafficking Calendar Year-to-Date Report 10/18/2013

2012-13 FFY Percentage of Verified Human Trafficking Findings where the Child was Not removed from the parent, Guardian or Caregiver				
Region	Circuit	Already Under the Care or Supervision of the State	Already Under the Care or Supervision of Another State	Total Already Under the Care of a State
Central	Circuit 05	0.0%	0.0%	0.0%
	Circuit 09	100.0%	0.0%	100.0%
	Circuit 10	100.0%	0.0%	100.0%
	Circuit 18	0.0%	0.0%	0.0%
Central Total		100.0%	0.0%	100.0%
Northeast	Circuit 03	0.0%	0.0%	0.0%
	Circuit 04	0.0%	0.0%	0.0%
	Circuit 07	0.0%	0.0%	0.0%
	Circuit 08	0.0%	0.0%	0.0%
Northeast Total		0.0%	0.0%	0.0%
Northwest	Circuit 01	0.0%	0.0%	0.0%
	Circuit 02	0.0%	0.0%	0.0%
	Circuit 14	0.0%	0.0%	0.0%
Northwest Total		0.0%	0.0%	0.0%
Southeast	Circuit 15	0.0%	0.0%	0.0%
	Circuit 17	96.0%	4.0%	100.0%
	Circuit 19	100.0%	0.0%	100.0%
Southeast Total		96.6%	3.4%	100.0%
Southern	Circuit 11	94.4%	5.6%	100.0%
	Circuit 16	0.0%	0.0%	0.0%
Southern Total		94.4%	5.6%	100.0%
SunCoast	Circuit 06	0.0%	0.0%	0.0%
	Circuit 12	0.0%	0.0%	0.0%
	Circuit 13	100.0%	0.0%	100.0%
	Circuit 20	100.0%	0.0%	100.0%
SunCoast Total		100.0%	0.0%	100.0%
Statewide Total		98.6%	1.4%	100.0%

Data Source: Florida Department of Children and Families, Office of Child Welfare, Florida Safe Families Network (FSFN) Human Trafficking Calendar Year-to-Date Report 10/18/2013

2012-13 Federal Fiscal Year Demographic Information for FDCF Verified Human Trafficking Findings

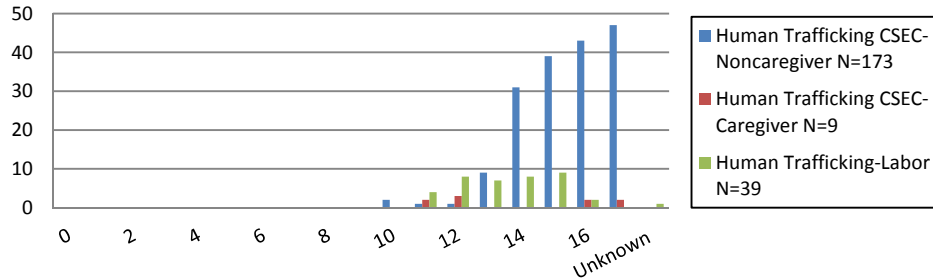
As stated earlier, the majority of FDCF Verified Human Trafficking allegations involved allegations that were associated with Human Trafficking - Non-caregiver allegations (78%).



2012-2013 Federal Fiscal Year (FFY) FDCF Verified Human Trafficking Findings by Victim Age

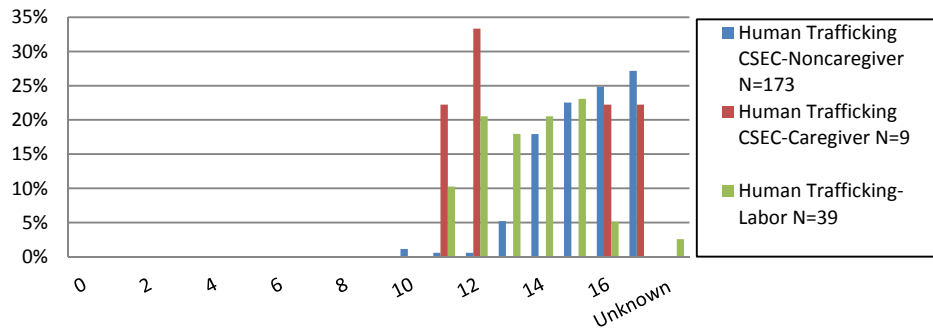
Data for FFY 2012-13 show that the average age of Verified Human Trafficking - CSEC Non-caregiver child abuse victims was 15 years of age. This was higher than both the observed average ages for Verified Human Trafficking-CSEC Caregiver (average age 11) and Human Trafficking-Labor Victims (average age 13). However, it is important to note that the limited number of Verified findings within the Human –CSEC Caregiver and Human Trafficking-Labor categories make it difficult to assert that observed differences between average ages in these two categories are significant.

2012-13 FFY Florida Department of Children and Families Verified Human Trafficking Allegations by Human Trafficking Allegation Type and Age



Data Source: Florida Department of Children and Families, Office of Child Welfare, Florida Safe Families Network (FSFN) Human Trafficking Calendar Year-to-Date Report 10/18/2013

2012-13 FFY Florida Department of Children and Families Percentage of Verified Human Trafficking Allegations by Human Trafficking Allegation Type and Age



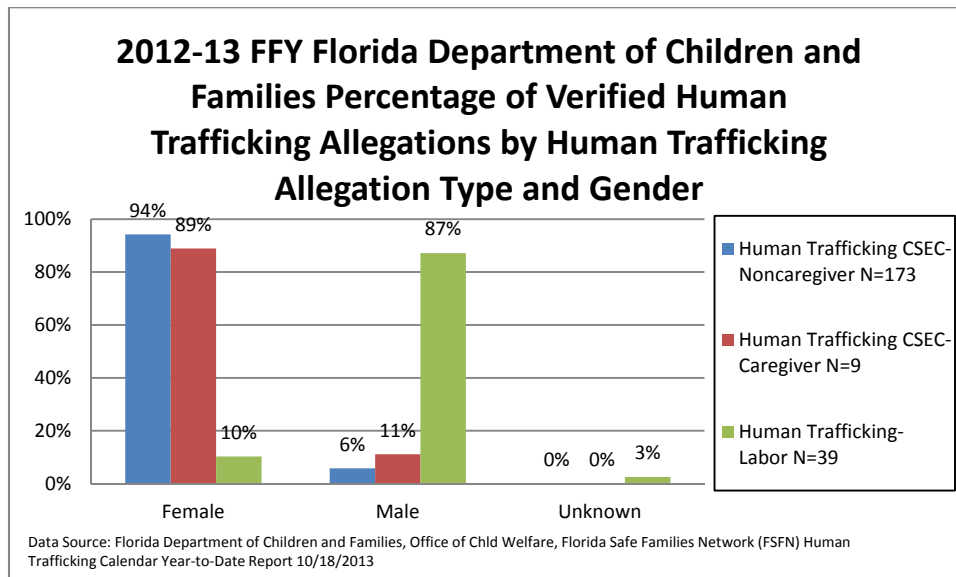
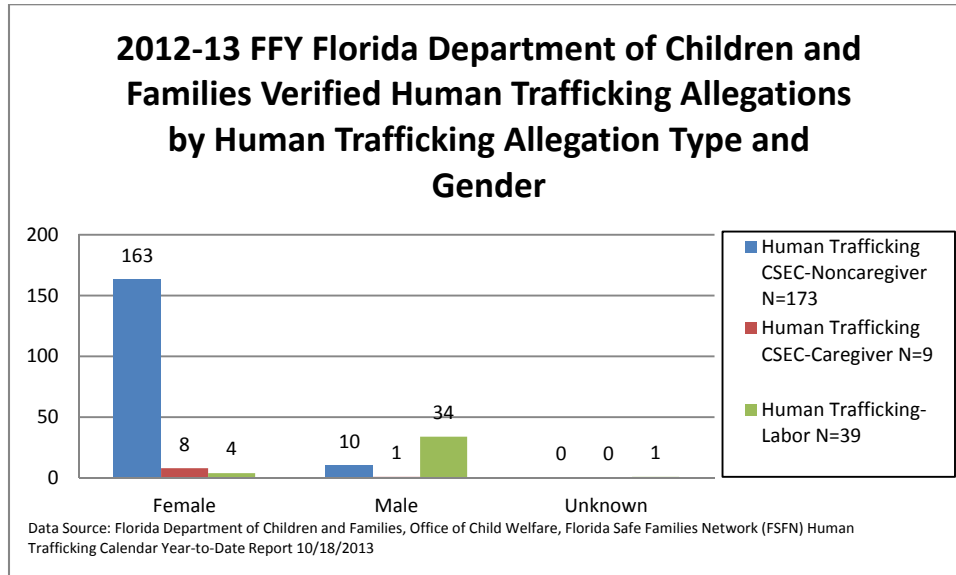
Data Source: Florida Department of Children and Families, Office of Child Welfare, Florida Safe Families Network (FSFN) Human Trafficking Calendar Year-to-Date Report 10/18/2013

Category	Average Age of Verified Victim
Human Trafficking - CSEC Noncaregiver	15
Human Trafficking - CSEC Caregiver	11
Human Trafficking - Labor	13

Data Source: Florida Department of Children and Families, Office of Child Welfare, Florida Safe Families Network (FSFN) Human Trafficking Calendar Year-to-Date Report 10/18/2013

2012-2013 Federal Fiscal Year (FFY) FDCF Verified Human Trafficking Findings by Victim Gender

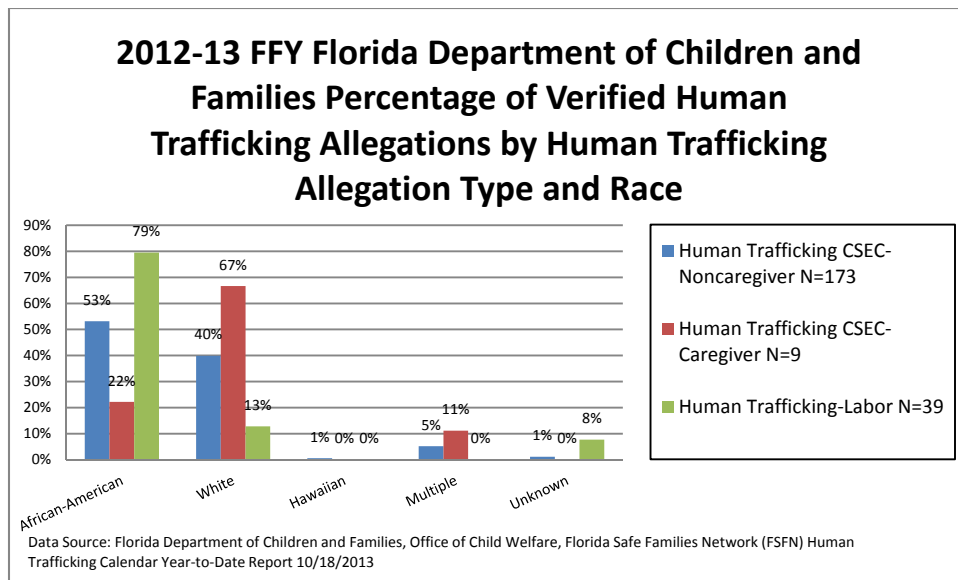
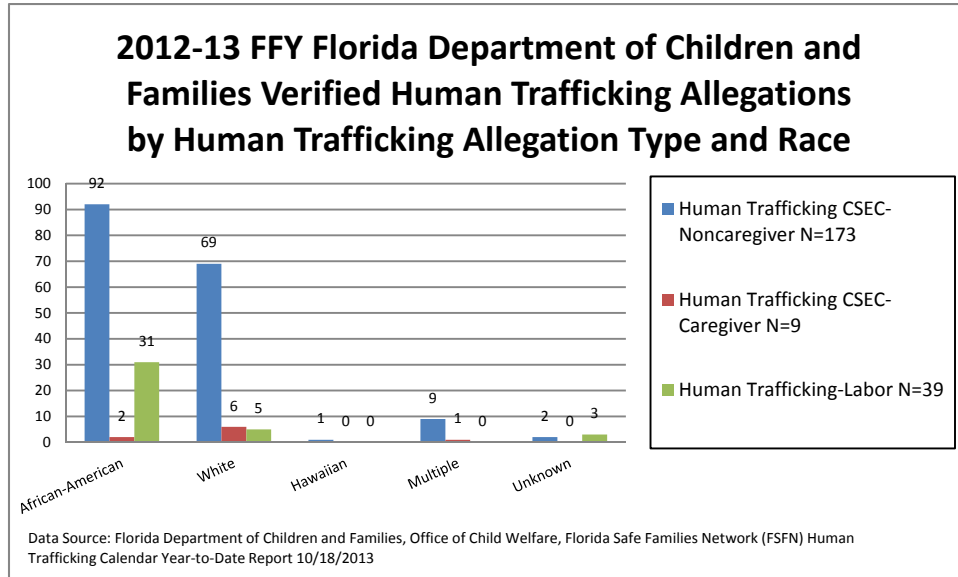
Data for FFY 2012-13 show that the percentage of Verified Human Trafficking - CSEC Non-caregiver (94%) and Verified Human Trafficking - CSEC Caregiver (89%) victims were overwhelmingly female. Verified Human Trafficking - Labor victims were 87% male and 36 of the 39 Verified findings involved door-to-door sales operations in FDCF Circuit 9 (Orange and Osceola Counties).



2012-2013 Federal Fiscal Year (FFY) FDCF Verified Human Trafficking Findings by Victim Race

Data for FFY 2012-13 show that the percentage of Verified Human Trafficking - CSEC Non-caregiver child abuse victims who were either African-American or White was 93%. Verified Human Trafficking CSEC Caregiver victims were primarily White (66%). However, the small number of Verified findings within

this category makes it difficult to determine if this statistic is significant. Verified Human Trafficking Labor victims were primarily African-American.



Verified Human Trafficking Findings Conclusions

Findings associated with FDCF Verified Human Trafficking data for FFY 2012-13 are not entirely dissimilar to what was observed within the FDCF Florida Abuse Hotline Intake data. As was the case with Intakes, the typical FDCF Verified Human Trafficking victims tend to:

- be located in larger urban areas;

- have allegations in which the alleged perpetrator is either unknown, or not considered to be a parent, guardian, or caregiver;
- be teens between the ages of 14-17; and
- be female.

In the case of dominant allegation type of Human Trafficking-CSEC Non-caregiver, they are split fairly evenly between African-Americans and Whites.

4. Removal and Placement of Children Who Had a Verified Finding of Human Trafficking

One of the primary objectives of Florida’s Safe Harbor law is to establish both “Short-Term” Safe Houses and Safe Houses throughout the state. These specialized treatment facilities are by law designed to meet the specialized and general service needs of identified juvenile commercial sexual exploitation victims. Overall provider interest in establishing both Short-Term Safe Houses and Safe Houses throughout the state has been minimal and in those cases where interest has been expressed issues associated with securing adequate funding have caused delays.

Assessment and Placement Information

Section 39.524(1), F.S. requires that all verified juvenile victims of commercial sexual exploitation who meet the requirement for removal and placement into the dependency system shall be assessed for placement into a Safe House. As noted earlier, for the FFY 2012-13, there were 28 Verified Human Trafficking CSEC findings that resulted in the removal of a child and an additional 49 Verified Human Trafficking CSEC child abuse findings that involved children who already were under the care or supervision of a state child welfare agency. As such, there were a total 77 Verified Human Trafficking CSEC child abuse findings associated with 57 individual children that required an assessment be completed for possible placement into a Safe House environment.

For FFY 2012-13, FSFN data show that Comprehensive Behavioral Health Assessments (CBHAs) were completed for 71 of the 77 (92%) children with Verified Human Trafficking-CSEC findings. The reasons for non-completion of the required assessments for the remaining six children with Verified Human Trafficking CSEC Findings were as follows:

- Two Verified Human Trafficking CSEC findings were associated with a teenager who was identified as a Human Trafficking CSEC victim prior to implementation of the Safe Harbor Act on January 1, 2013. This teen reached the age of 18 on January 12, 2013.
- A Verified Human Trafficking CSEC finding was associated with a teenager in which the allegation of Human Trafficking CSEC was made within 14 days the teenager reaching her 18th birthday.
- A Verified Human Trafficking CSEC finding was associated with a teenager in which the allegation of Human Trafficking CSEC was made within 5 days the teenager reaching her 18th birthday.

- A Verified Human Trafficking CSEC allegation finding was associated with a teenager who was identified as being from the state of Texas. Primary activities associated with this case were focused on returning this teen to her to home state as required by the Interstate Compact for Juveniles (ICJ) (Section 985, F.S.).
- A Verified Human Trafficking CSEC finding was associated with a teenager who had been returned to her aunt even though the Florida Safe Families Network system had the child coded as being removed from her home.

Assessments Conducted for Verified Findings of Human Trafficking-CSEC where a Child was Removed from the Home or where the Child was Already Under the Care or Supervision of a State Child Welfare Agency						
Region	Circuit	CBA Completed	Teen Aged Out Prior to CBA Being Conducted	Out-of-State Teen	Placed w/Relative	Total
Central	Circuit 05	0	0	0	0	0
	Circuit 09	4	0	0	0	4
	Circuit 10	3	0	0	0	3
	Circuit 18	2	0	0	0	2
Central Total		9	0	0	0	9
Northeast	Circuit 03	0	0	0	0	0
	Circuit 04	0	0	0	0	0
	Circuit 07	0	0	0	0	0
	Circuit 08	0	0	0	0	0
Northeast Total		0	0	0	0	0
Northwest	Circuit 01	0	0	0	0	0
	Circuit 02	0	0	0	0	0
	Circuit 14	1	0	0	0	1
Northwest Total		1	0	0	0	1
Southeast	Circuit 15	3	0	0	0	3
	Circuit 17	27	2	0	1	30
	Circuit 19	2	0	0	0	2
Southeast Total		32	2	0	1	35
Southern	Circuit 11	18	0	1	0	19
	Circuit 16	0	0	0	0	0
Southern Total		18	0	1	0	19
SunCoast	Circuit 06	2	0	0		2
	Circuit 12	1	0	0	0	1
	Circuit 13	6	2	0	0	8
	Circuit 20	2	0	0	0	2
SunCoast Total		11	2	0	0	13
Statewide Total		71	4	1	1	77

Data Source: Florida Department of Children and Families, Office of Child Welfare, Florida Safe Families Network (FSFN) Ad hoc report 11/18/2013

For FFY 2012-13, only one provider attempted to establish a “Short-Term” Safe House in Florida. This Miami-based provider was operational during the Spring 2013 for approximately two months before being closed due to safety concerns related to the facility location, as well behavioral issues within the population the facility was attempting to serve. In all, five children were served in this Miami based placement with an average length of stay of 21 days. Two additional Safe House providers in Palm Beach and Lee Counties were operational during FFY 2012-13. Both of these placement options are focused on providing placement and services to female teens who have disclosed they no longer wish to participate in prostitution related activities, have limited mental health and substance abuse treatment issues, and no delinquency court involvement on non-prostitution related charges and convictions. Licensed capacity for these two facilities has been set at six beds per facility. However, operational limits associated with the intensive service needs of this population have limited the functional capacity of both placements to three beds. In FFY 2012-13, a total of three children resided in each of the Palm Beach and Lee County facilities (six total), with the average length of stay being 283 days for the Palm Beach County facility and 337 for the Lee County facility.

Information for all Verified Human Trafficking CSEC findings in which the child was removed or already under the care or supervision of a state child welfare agency is provided below.

2012-13 FFY Safe House Placement Decisions								
Region	Circuit	Placed in Safe House	No Safe House Available	Assesed Prior to 1/1/13	Prior Placement in Safe House	Placed with Relative	Out-of-State	Total
Central	Circuit 05	0	0	0	0	0	0	0
	Circuit 09	0	4	0	0	0	0	4
	Circuit 10	0	3	0	0	0	0	3
	Circuit 18	0	2	0	0	0	0	2
Central Total		0	9	0	0	0	0	9
Northeast	Circuit 03	0	0	0	0	0	0	0
	Circuit 04	0	0	0	0	0	0	0
	Circuit 07	0	0	0	0	0	0	0
	Circuit 08	0	0	0	0	0	0	0
Northeast Total		0	0	0	0	0	0	0
Northwest	Circuit 01	0	0	0	0	0	0	0
	Circuit 02	0	0	0	0	0	0	0
	Circuit 14	0	1	0	0	0	0	1
Northwest Total		0	1	0	0	0	0	1
Southeast	Circuit 15	1	2	0	0	0	0	3
	Circuit 17	2	16	10	1	1	0	30
	Circuit 19	0	2	0	0	0	0	2
Southeast Total		3	20	10	1	1	0	35
Southern	Circuit 11	9	9	0	0	0	1	19
	Circuit 16	0	0	0	0	0	0	0
Southern Total		9	9	0	0	0	1	19
SunCoast	Circuit 06	0	2	0	0	0	0	2
	Circuit 12	0	1	0	0	0	0	1
	Circuit 13	0	3	5	0	0	0	8
	Circuit 20	0	1	1	0	0	0	2

SunCoast Total	0	7	6	0	0	0	13
Statewide Total	12	46	16	1	1	1	77

Data Source: Florida Department of Children and Families, Office of Child Welfare, Florida Safe Families Network (FSFN) Ad hoc report 11/18/2013

The 12 Verified Allegations of Human Trafficking that resulted in placement of a child into a Safe House environment involved a total of seven children. Of the 12 Verified Human Trafficking findings:

- four involved Verified Human Trafficking findings where it was determined that the parent was involved in the commercial sexual exploitation of the child;
- four involved Verified Human Trafficking findings where it was determined that a non-caregiver was the perpetrator, and the child was removed from their caregiver and placed into a Safe House; and
- four involved Verified Human Trafficking findings where it was determined that a non-caregiver was the perpetrator, and the child already was residing in the foster care system.

The small number of operational “Short Term” Safe Houses and Safe Houses has severely limited the ability of Community-Based Care lead agencies to place identified commercial exploitation victims into a Safe House setting. However, there currently are several areas of the state, in particular Orange, Broward and Miami-Dade Counties, that have developed alternative placements for commercial sexual exploitation victims. While these placements do not necessarily meet the definitional requirements of a Safe House, they are able to provide both services and placements to commercial sexual exploitation victims in both residential (Orange and Broward Counties) and therapeutic foster care (Miami-Dade County) settings. Since these alternative placements tend to blend known and suspected commercial sexual exploitation victims with noncommercial sexual exploitation victims, it is difficult to calculate an average length of stay within these placements.

The 65 Verified Allegations of Human Trafficking that resulted in placement of a child into an alternative foster care placement involved 51 total children. Of the 65 Verified Human Trafficking findings:

- six involved Verified Human Trafficking findings where it was determined that the parent was involved in the commercial sexual exploitation of the child;
- fourteen involved Verified Human Trafficking findings where it was determined that a non-caregiver was the perpetrator, and the child was removed from their caregiver and placed into an alternative foster care placement; and
- forty-five involved Verified Human Trafficking findings where it was determined a non-caregiver was the perpetrator, and the child was already residing in the foster care system.

2012-13 FFY Alternative Placement Decisions for Children Who Were Not Placed into a Safe House

Region	Circuit	Placed with Parent	Placed with Relative	Residential Mental Health Facility	Residential Substance Abuse Facility	Sexual Abuse/Human Trafficking Alternative	Therapeutic Foster Home	Stable in Current Foster Care Placement	General Foster Care	DJJ Not Directly Related to Prostitution	DJJ Out-of-State	Total
Central	Circuit 05	0	0	0	0	0	0	0	0	0	0	0
	Circuit 09	0	0	0	0	4	0	0	0	1	0	5
	Circuit 10	0	0	0	0	1	0	0	1	2	0	4
	Circuit 18	0	0	0	0	0	0	0	0	0	0	0
Central Total		0	0	0	0	5	0	0	1	3	0	9
Northeast	Circuit 03	0	0	0	0	0	0	0	0	0	0	0
	Circuit 04	0	0	0	0	0	0	0	0	0	0	0
	Circuit 07	0	0	0	0	0	0	0	0	0	0	0
	Circuit 08	0	0	0	0	0	0	0	0	0	0	0
Northeast Total		0	0	0	0	0	0	0	0	0	0	0
Northwest	Circuit 01	0	0	0	0	0	0	0	0	0	0	0
	Circuit 02	0	0	0	0	0	0	0	0	0	0	0
	Circuit 14	0	0	0	0	0	0	1	0	0	0	1
Northwest Total		0	0	0	0	0	0	1	0	0	0	1
Southeast	Circuit 15	0	0	0	0	1	0	0	1	0	0	2
	Circuit 17	1	1	5	0	11	0	1	9	0	0	28
	Circuit 19	0	0	1	1	0	0	0	0	0	0	2
Southeast Total		1	1	6	1	12	0	1	10	0	0	32
Southern	Circuit 11	1	0	0	0	0	2	0	2	1	4	10
	Circuit 16	0	0	0	0	0	0	0	0	0	0	0
Southern Total		1	0	0	0	0	2	0	2	1	4	10
SunCoast	Circuit 06	0	1	0	0	0	0	0	1	0	0	2
	Circuit 12	0	0	0	0	0	0	0	1	0	0	1
	Circuit 13	1	0	0	1	0	0	2	4	0	0	8
	Circuit 20	0	0	0	0	1	0	1	0	0	0	2
SunCoast Total		1	1	0	1	1	0	3	6	0	0	13
Statewide Total		3	2	6	2	18	2	5	19	4	4	65

Data Source: Florida Department of Children and Families, Office of Child Welfare, Florida Safe Families Network (FSFN) Ad hoc report 11/18/2013

Safe House Placement Demographics

The small number (12) of Verified allegations of Human Trafficking containing a commercial sexual exploitation component that resulted in placement of a child into a Safe House environment makes it difficult to make any significant statements about the type of victim placed. However, FFY 2012-2013 data for these 12 Verified Human Trafficking allegations indicated that:

- the average age of a Safe House-placed child was 14.5 years;
- all Safe House placed children were female;
- 58% of all Safe House placed victims were African-American and 42% were White;and

- all of the Safe House-placed victims were located in either the FDCF Southeast or Southern Region (three in FDCF Southeast Region and nine in FDCF Southern Region).

Alternative Placement Demographic

While the number of Verified allegations (65) that resulted in placement of a child into an alternative foster setting was significantly higher than Safe House placement, the number is still relatively small, which makes it difficult to make any significant statements about the type of victims placed into alternative foster care settings. However, FFY 2012-2013 data for the 12 Verified Human Trafficking allegations that contained a commercial sexual exploration component, and that resulted in an alternative foster care placement, indicated that:

- the average of an alternatively-placed child was 14.4 years;
- all alternatively-placed children were female;
- 49% of all alternative foster care placement children were African-American, 46% were White, and 5% were categorized as Multiple Race;
- both FDCF Central and Southeast Regions were extremely aggressive in their use of alternative Sexual Abuse/Human Trafficking programs. Within FDCF Central Region, 55% of the nine Verified allegations that resulted in the placement of a trafficking victim into an alternative foster care setting. Within FDCF Southeast Region, 37% of the 32 Verified allegations resulted in the placement of a trafficking victim into an alternative foster care setting.

Safe Harbor Placement Expansion Efforts

In an effort to stimulate creation of additional Safe House placements, the Florida Legislature authorized the expenditure of \$1,468,601 in nonrecurring funds for the 2013-14 State Fiscal Year (SFY). These additional nonrecurring funds were designed to support Community-Based Care lead agency efforts in acquiring an estimated 50 additional Safe House beds within those areas of the state experiencing the highest verification rates of juvenile commercial exploitation. These placements are expected to:

- provide security, crisis intervention services, general counseling, and victim-witness counseling;
- have the capability to conduct comprehensive assessments that can identify a victim's service needs;
- provide residential care;
- ensure that victims have access to and are receiving appropriate health and dental care; have access to behavioral health services, recreational activities, food, clothing, supplies, infant care, and miscellaneous expenses associated with caring for these child victims;
- arrange for educational services, including life skills services and planning services for the successful transition of residents back to the community;
- provide transportation for youth as needed.

The areas of the state that received additional funds, the amount of funds received, and increased Safe House bed capacity goals are listed on the next page.

2013-14 State Fiscal Year Nonrecurring Safe House Allocation by FDCF Region and Circuit			
Region	Circuit	2013-14 SFY Nonrecurring Amount Received	Safe House Bed Goal
Central	Circuit 09	\$234,977	8
Southeast	Circuit 17	\$352,464	12
Southern	Circuit 11	\$528,696	12
SunCoast	Circuit 13	\$352,464	18
Statewide Total		\$1,468,601	50

5. Suspected Human Trafficking Victims that Resided within the Foster Care System

While the analysis of Hotline Intakes, child protective investigative findings associated with these intakes, and a review of the removal and placement decisions made as a result of all Verified findings provides valuable insight into the overall scope of Human Trafficking activities within the state of Florida. However, it is important to remember that it is not the only Human Trafficking data source available to the FDCF. Within the FDCF FSFN data system, three additional data elements are utilized to identify the possible involvement of a child in commercial exploitation activities in those cases where the available information may allow for verification of the child’s involvement. These additional FSFN data elements are:

- FSFN Person Management Page Out-of-Home Care Placed Human Trafficking Possible/Confirmed CSEC Involvement;
- FSFN Foster Care System Missing Child Report Form “Possibly Involved in Prostitution” Radial Button; and
- FSFN Verified findings of Human Trafficking that occurred prior to October 1, 2012.

These three additional data elements allow Community-Based Care lead agencies services providers to estimate the potential foster care system commercial sexual exploitation “risk pool” based on past and current observed behaviors and findings.

In addition to the 57 children who were attached to the 77 Verified Human Trafficking findings where an allegation of commercial exploitation was present, an additional 335 children had an entry in FSFN that indicated they were actively placed in the foster care system during the course of FFY 2012-13 with an additional indicator of past or possible involvement in commercial sexual exploitation. Information

detailing FFY 2012-13 cumulative count information by area of the state and gender for these possible victims is provided on the next page.

2012-2013 FFY Foster Care Children Who Had an Indication of Past or Possible Current Involvement in Commercial Sexual Exploitation Activities by FDCF Region/Circuit and Gender				
Region	Circuit	Female	Male	Total
Central	Circuit 05	9	0	9
	Circuit 09	28	4	32
	Circuit 10	13	0	13
	Circuit 18	15	1	16
Central Total		65	5	70
Northeast	Circuit 03	1	0	1
	Circuit 04	16	0	16
	Circuit 07	3	1	4
	Circuit 08	4	0	4
Northeast Total		24	1	25
Northwest	Circuit 01	5	0	5
	Circuit 02	6	0	6
	Circuit 14	5	0	5
Northwest Total		16	0	16
Southeast	Circuit 15	22	1	23
	Circuit 17	40	6	46
	Circuit 19	4	0	4
Southeast Total		66	7	73
Southern	Circuit 11	54	3	57
	Circuit 16	1	0	1
Southern Total		55	3	58
SunCoast	Circuit 06	25	0	25
	Circuit 12	8	0	8
	Circuit 13	48	3	51
	Circuit 20	9	0	9
SunCoast Total		90	3	93
Statewide Total		316	19	335

Data Source: Florida Department of Children and Families, Office of Child Welfare, Florida Safe Families Network (FSFN) Ad hoc Report 11/18/2013

As previously stated, the above information provides a cumulative count of all children who were in foster care at some point during the course of FFY 2012-2013. Since mid-September 2013 FDCF has reviewed daily FSFN extracts in an effort to determine daily the number of current foster children who are at risk of becoming victims of commercial sexual exploitation. The FSFN Human Trafficking Risk Pool Daily Listing Report has indicated that on any given day, there are approximately 185 Florida children in

the foster care system who display at least one of the three additional data elements that may place them at risk of becoming a commercial sexual exploitation victim. Information detailing daily listing information for these potential victims for November 18, 2013 is provided on the next page by area of the state and gender.

November 18, 2013 Foster Care Children Who Had an Indication of Past, Current or Possible Involvement in Commercial Sexual Exploitation Activities: by FDCF Region/Circuit and Gender				
Region	Circuit	Female	Male	Total
Central	Circuit 05	5	0	9
	Circuit 09	7	2	32
	Circuit 10	9	0	13
	Circuit 18	4	1	16
Central Total		25	3	70
Northeast	Circuit 03	0	0	1
	Circuit 04	16	0	16
	Circuit 07	0	0	4
	Circuit 08	4	0	4
Northeast Total		20	0	25
Northwest	Circuit 01	1	0	5
	Circuit 02	3	0	6
	Circuit 14	2	0	5
Northwest Total		6	0	16
Southeast	Circuit 15	15	1	23
	Circuit 17	28	2	46
	Circuit 19	3	0	4
Southeast Total		46	3	73
Southern	Circuit 11	39	1	57
	Circuit 16	2	0	1
Southern Total		41	1	58
SunCoast	Circuit 06	12	0	25
	Circuit 12	2	0	8
	Circuit 13	18	1	51
	Circuit 20	7	0	9
SunCoast Total		39	1	93
Statewide Total		177	8	335

Data Source: Florida Department of Children and Families, Office of Child Welfare, Florida Safe Families Network (FSFN) Human Trafficking Risk Pool Daily Listing 11/18/2013

6. Conclusions

Efforts to increase general awareness as to the need to report possible Human Trafficking allegations to the Florida Abuse Hotline so the allegations can be investigated as possible child abuse have been extremely effective. This effectiveness is evidenced by the 95% increase in the number of Human Trafficking allegations received and accepted by the Hotline between FFY 2010-11 and FFY 2012-2013.

The overall ability of FDCF and contracted Sherriff's Office Child Protective Investigators to verify allegations of Human Trafficking also has improved significantly. Over the course of FFY 2010-11, only

9% of Human Trafficking allegations were categorized as Verified. During the course of FFY 2012-13, this percentage increased to 23% and was consistent with the overall FDCF Verified finding rate for all allegations.

Requirements for all Verified juvenile Human Trafficking victims being placed in the foster care system to be assessed for possible placement into a Safe House environment were aggressively pursued by FDCF and its contracted Community-Based Care service providers. Only a handful of cases - those in which a child had turned 18 or in which the child was returned to another state - did not have a completed Comprehensive Behavioral Health Assessment (CBHA).

Throughout FFY 2012-13, the small number of available “Short-Term” Safe Houses and regular Safe Houses only allowed seven children identified as a being Verified Human Trafficking victims to be placed in Safe House Environments. Efforts to acquire an additional 50 beds for placement are underway, thanks to the Florida Legislature’s authorization of nonrecurring funds in the amount of \$1,468,601 for SFY 2013.

Even in the absence of sufficient Safe House placement options, Community-Based Care service providers continue to identify alternative services and placements that have the potential to meet the unique needs of this population. The use of alternative placements and services that have the capability to meet these unique needs are best seen in the Central and Southeast Regions, where existing programs and placements for sexual abuse victims have been leveraged to serve human trafficking victims.

While it is difficult to determine an exact count of the number of past, current, or potential commercial sexual exploitation victims who currently reside within the Florida foster care system, FDCF has undertaken several key steps to improve its ability to provide more accurate estimates. The creation of new data elements and reports within the FSFN data system that allow for the tracking of Florida Abuse Hotline Intakes, Child Protective Investigative findings, and detailed listings of the foster care system human trafficking “risk pool” should allow the FDCF and Community-Based Care service providers to more effectively focus limited resources in support of these victims.

Finally, improvements in collection and reporting of foster care system human trafficking data have helped FDCF gain a better understanding of where human trafficking victims are located and who they are.