

Florida Communities Trust Annual Report
Fiscal Year 2012-2013

Office of Operations Land and Recreation
Florida Department of Environmental Protection
September 30, 2013

3900 Commonwealth Boulevard, MS 103
Tallahassee, Florida 32399-3000
www.dep.state.fl.us





Table of Contents

LETTER FROM THE CHAIR	3
FLORIDA COMMUNITIES TRUST	4
MISSION AND ACCOMPLISHMENTS	5
CLOSINGS AND REIMBURSEMENTS.....	8
ACQUIRED PROJECTS FOR FISCAL YEAR 2012-2013	13
ACQUIRED PROJECTS BY COUNTY 1991-2013	15
SUMMARY OF FINANCIALACTIVITIES	29
FLORIDA COMMUNITIES TRUST BOARD MEMBERS	30



Florida Communities Trust Letter from the Chair

Dear Floridians,

For more than 20 years, Florida Communities Trust (FCT) and its local partners have preserved the best of Florida by acquiring more than \$858 million in land used for parks, open space and working waterfront projects. This year FCT added seven project site closings totaling more than \$22 million. Of this, *Florida Forever* contributed more than \$7 million to help acquire more than 1,200 acres.

During the 2012-2013 fiscal year, FCT joined the Department of Environmental Protection's Land and Recreation Grants Section, creating a one-stop shop for local governments and nonprofits to apply for and receive grants to fund conservation, preservation and outdoor recreational opportunities. FCT complements other grant programs including Florida Recreation Development Assistance Program, Land and Water Conservation Fund and the Recreation Trails Program, working in tandem to provide grant funds for local governments to acquire and develop land.

I invite you to learn more about the FCT's work in this report which reaffirms the program's mission and highlights some of this year's closings.

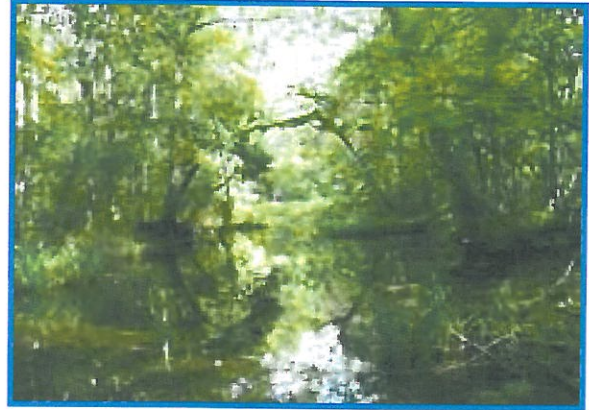
Sincerely,

Herschel T. Vinyard Jr.
Chair, Florida Communities Trust Governing Board
Secretary, Florida Department of Environmental Protection

FLORIDA COMMUNITIES TRUST

What is the Florida Communities Trust?

Florida Communities Trust (FCT) is a multi-faceted grant program housed within the Florida Department of Environmental Protection's Office of Operations. FCT began in 1991 under Preservation 2000 as a funding resource for local communities to buy land for the protection of natural and cultural resources, and the provision of recreational opportunities.



Over the last five years FCT has been given a second grant program dedicated to the protection of Florida's traditional working waterfronts, and has placed greater emphasis on stewardship and management oversight of a diverse collection of local and regional parks and working waterfronts. Today, FCT administers the Parks and Open Space, and Stan Mayfield Working Waterfronts Programs, two competitive grant programs that have provided funding to local governments and non-profit organizations to assist them with their local land conservation efforts. Projects funded by FCT have fostered cultural and historical preservation, trail system development, and public access to water. FCT has also furthered the outdoor recreation, natural resource protection, and working waterfront needs identified in local government comprehensive plans.

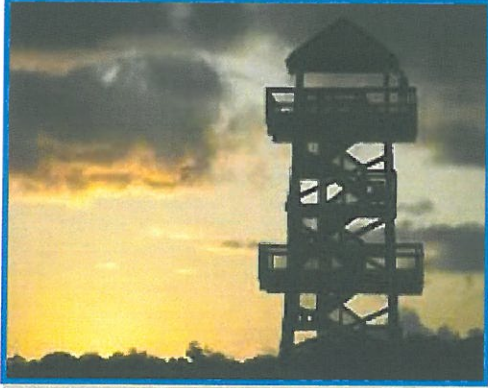


FCT is governed by a five-member board that includes the Secretary of the Department of Environmental Protection (who serves as permanent chair) and four members of the public appointed by the Governor. Appointees to the Board include a former elected official of a metropolitan municipality, a former elected official of a county, a representative of an environmental non-profit

organization, and a representative of the development industry.

FLORIDA COMMUNITIES TRUST MISSION AND ACCOMPLISHMENTS

Meeting Community Challenges

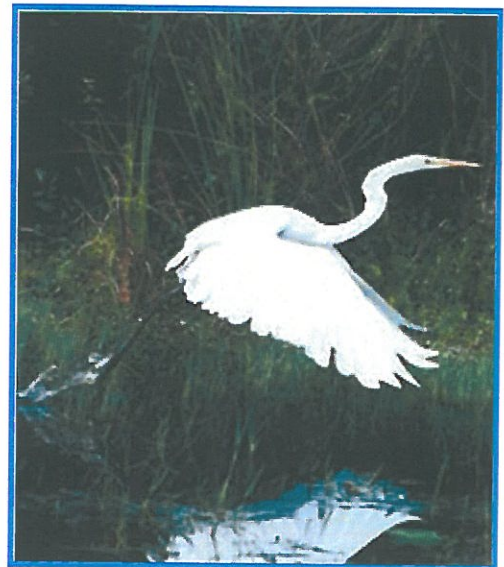


Florida Communities Trust (FCT) helps communities further the goals of their local government land use plans through land acquisition and innovative non-regulatory solutions to the challenges inherent in the land planning process. After a project has been acquired, FCT continues to offer assistance, providing guidance with park development and management oversight through annual stewardship reporting and site visits.

The Spirit of Partnership

FCT is dedicated to working with communities across the state to acquire lands for recreation, open spaces, and working waterfronts, fostering responsible stewardship of those lands once they have been purchased.

While land acquisition grant funds are the result of partnerships between FCT and local communities, the projects often encourage local governments to work together during the acquisition process, and thereafter, for management of the properties as well. These joint efforts make it possible for communities to stretch state and local dollars further than they could on their own, distribute project management responsibilities, and preserve locally significant lands.



Funding for the Trust

FCT is funded through the *Florida Forever* program, and it is the only state land acquisition program available exclusively for locally selected projects. Once a project has been purchased, the grant recipient, not the state, holds title to the lands. Each recipient is then responsible for land stewardship and implementing a formal management plan which must be approved by FCT.

FLORIDA COMMUNITIES TRUST MISSION AND ACCOMPLISHMENTS

Promoting Economic Revitalization

Projects funded by Florida Communities Trust (FCT) encourage ecotourism, and often help spur economic revitalization in communities. The grant application gives consideration to projects located in areas with special economic needs, including Florida Main Street Districts, designated low-income communities, Rural Areas of Critical Economic Concern, or designated urban infill areas.

Preserving Florida's Cultural Gems

The majority of FCT's projects protect precious natural resources but many of them also have historical and cultural value. Special emphasis is placed on preserving historical resources and has helped Florida's communities save dozens of sites with significance at the local, state and national levels.

Promoting Education

Education is an important part of conserving our resources, and with that in mind, FCT places a priority on projects with educational aspects, awarding points during competitive selection to those projects providing for onsite interpretative signs, educational classes, and even environmental education centers.

Land Management and Stewardship

FCT continues to place a priority on land management and park development, which complements the Division of State Lands' role as Florida's lead agency for environmental management and stewardship. Over the last 22 years, FCT has helped to acquire approximately 577 local and regional parks in various stages of development and while title is held by the local communities that receive funding, the deeds contain restrictions giving FCT management oversight. FCT grant recipients are also required to follow



FLORIDA COMMUNITIES TRUST MISSION AND ACCOMPLISHMENTS

management plans and park development timelines, approved by FCT staff as part of the acquisition process. As part of the ongoing effort to confirm proper stewardship and management at FCT parks, staff conducted site visits during this last year. These visits reinforced awareness of the land management and park development requirements, and rewarded grant recipients who have fully developed their parks, and who have demonstrated commitment to accomplishing successful outcomes by offering a relaxed stewardship reporting requirement from annual reporting to a five-year interval.

2013 Florida Forever Grant Application Cycle

In fiscal year 2012-13, the Florida Communities Trust did not receive *Florida Forever* Funds for acquisition. However, staff continued their efforts to preserve land for parks, open space, and working waterfronts with funding received in prior years.

Conclusion

Staff and Governing Board members will continue working with Florida's communities to strengthen relationships, encourage good land management practices, assure all community responsibilities are met at each FCT-funded park, helping to preserve more land for Florida's future parks, open spaces, and working waterfronts.

CLOSINGS AND REIMBURSEMENTS

2012 - 2013

Cypress Creek Natural Area Phase V.....	Palm Beach County
Kelly Park 3rd Addition.....	Orange County
Live Oak Heritage Park – CSX Parcel.....	City of Live Oak
Morsani Ranch – Headwaters of the Pithlachascotee River.....	Pasco County
Santa Fe River Creek Preserve.....	Alachua Conservation Trust, Inc.
Tucker Ranch Heritage Park.....	City of Winter Gardens
Veteran’s Memorial Park Expansion.....	Brevard County

FEATURED CLOSINGS AND REIMBURSEMENTS 2012 - 2013

Cypress Creek Natural Area, Phase V

Recipient: Palm Beach County

Project Number: 11-001-FF11

FCT Grant: \$3,489,389.52

Local Match: \$13,760,000

Acres: 160.00



The Cypress Creek Natural Area Phase V Project Site was acquired by Palm Beach County as part of a comprehensive, multi-county, multi-agency effort to protect natural and historical resources,

provide a network of outdoor recreational opportunities and further hydrologic restoration in the Loxahatchee River Basin. The 230-acre property includes the project site and is comprised of moderate to high-quality vegetation including a mixture of mesic flatwoods and strand swamp interspersed with dome swamp, wet prairie (identified by Florida Natural Areas Inventory as a state imperiled community), wet flatwoods, shallow depression marshes, mesic hammock and floodplain swamp. The proposed future use of the Project Site is for conservation and natural resource-based recreation, such as hiking, fishing, canoeing, and studying nature.

Proposed public use facilities include a hiking trail, equestrian trail, pedestrian/bike trail, informational kiosk, wildlife observation platform, picnic pavilion, fishing pier, canoe/kayak launch with canoe trail, and a parking area. This acquisition will add additional trails to the previous Cypress Creek Natural Area purchases and will provide the vital connection to adjacent multi-use trails.

Benefits of the project include the protection and restoration of wetlands in the Cypress Creek Natural Area which will help improve the quantity and quality of freshwater to the northwest fork of the Federally-designated Wild & Scenic Loxahatchee River, thereby reducing the threat of saltwater intrusion. The project also provides habitat for several listed species of plants and animals, conserves water resources, and removes the development potential from the property. Acquiring this property provides the public additional resource-based recreational opportunities.

Kelly Park 3rd Addition

Recipient: Orange County
Project Number: 11-014-FF11
FCT Grant: \$364,560.00
Local Match: \$547,910.84
Acres: 33.75

Kelly Park/Camp Joy provides a place for girl/boy scouts, as well as other groups, to have their events and ceremonies. It serves as a large outdoor classroom for the public to connect with nature and which in the years ahead they can return to with their children.



***Live Oak Heritage Park
CSX Parcel***

Recipient: City of Live Oak
Project Number: 08-066-FF8
FCT Grant: \$42,866.00
Local Match: \$10,716.50
Total Acres: 29.86

The CSX property is a very important piece of the Live Oak Heritage Park as the proposed development of the paved multi-purpose trail on the site will connect Heritage Park and Gardens directly to the downtown Live Oak Business district. This connection will be part of the economic development plan for revitalizing downtown Live Oak and will be used by both visitors and residents of the community.



***Morsani Ranch Headwaters of the
Pithlachascotee River***

Recipient: Pasco County
Project Number: 11-047-FF11
FCT Grant: \$1,027,040.00
Local Match: \$1,540,560.00
Acres: 598.62

Morsani Ranch is a unique acquisition for the Environmental Lands Program in Pasco County. The ranch allows staff to showcase all of program's main objectives outlined in the County's Regional



Conservation Strategy Plan, including protecting natural communities including uplands and wetlands, connecting natural linkages, conserving viable populations of native plants and animals, protecting habitat for listed species, protecting water resources and wetland systems, protecting unique natural resources, enhancing resource-based recreational opportunities and expanding environmental education opportunities. Utilizing portions of the property as an active cattle ranch helps preserve a piece of the county's agricultural heritage.

Located in north central Pasco County, the acquisition helps protect the headwaters of the Pithlachascotee River and the Crews Lake watershed. Wildlife moves along the planned wildlife corridor running through the ranch that connects Starkey Wilderness and Crossbar Ranch. The area provides habitat for grassland species including the sandhill crane, kestrel, eastern meadowlark and wintering grasshopper sparrows. A gopher tortoise habitat restoration project is underway with funding assistance from the Florida Fish and Wildlife Conservation Commission, and the ranch was an integral part of the 1st Annual Nature Coast Wildlife and Birding Festival hosted by Hernando and Pasco Counties.

Recently the County adopted a new list of the Strategic Objectives, including enriching the quality of life by conserving, enhancing and managing the county's natural resources. Under the new objectives, adding Morsani Ranch to the Environmental Lands Program receives a passing grade.

Santa Fe River Preserve

Recipient: Alachua Conservation Trust, Inc.

Project Number: 08-082-FF8

FCT Grant: \$618,632.23

Local Match: \$284,744.27

Acres: 167.09



The Santa Fe River Preserve and Rail Trail project will serve the Worthington Springs and Lake Butler community as a high-quality natural area for passive recreation such as hiking, biking, canoeing/kayaking, bird watching and outdoor education. In addition, the Alachua-Lake Butler Rail Trail, a 7-mile long abandoned rail corridor traversing Alachua and Union Counties expands the hiking, biking, and equestrian trail network near the towns of Alachua,

Worthington Springs, and Lake Butler where it connects to the Palatka-Lake Butler State (rail) Trail. The Preserve and Rail Trail project is significant because it protects wildlife habitat in a riverine ecological corridor while providing new opportunities for recreation and education and also secures a significant regional recreational amenity.

Tucker Ranch Heritage Park

Recipient: City of Winter Garden

Project Number: 08-069-FF8

FCT Grant: \$840,252.00

Local Match: \$1,263,228.00

Acres: 208.96

Tucker Ranch Heritage Park will feature environmental education, group camping, canoe/kayak use, historical interpretive activities, hiking trails and a nature center. The

City is discussing collaborating with local schools to offer an environmental component to the educations of students at the site.



Veteran's Memorial Park Expansion

Recipient: Brevard County

Project Number: 11-031-FF11

FCT Grant: \$800,000.00

Local Match: \$1,202,250.00

Acres: 43.53

The County acquired an additional 43.53 acres of property, expanding its ownership to an 80 acre multi use park,

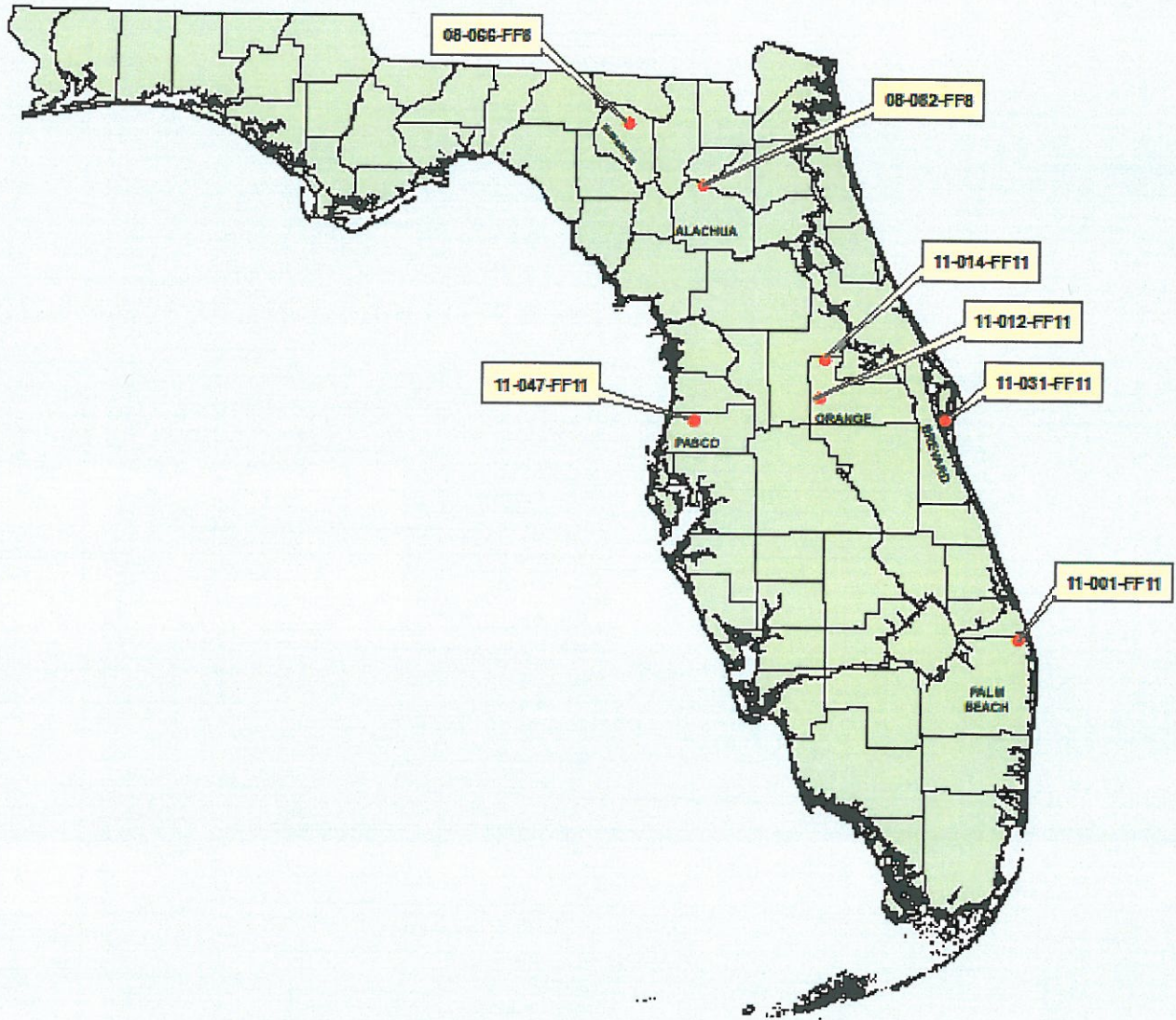
including the existing 2.63 acre Veterans Memorial Park. The existing Park has a Memorial Museum with a Large Meeting Room, Fishing Pier, Lighted Boardwalk, and Memorial Garden with paths. The additional acreage allows the County to contribute to the quality of life by providing more leisure activities reflecting the value and history of Veterans and those who serve our military, along with increased storm water management and conservation. A conceptual design has been approved and the County is proceeding with the project that will ultimately include walking trails, boardwalks, wildlife observation, picnic pavilion, play structure, educational kiosk, water fountain, benches, horseshoe pit, non-motorized boat launching area and fishing pier. There are also plans to locate the Vietnam Moving Wall at the Park and to build a Medal of Honor Area and a building for the Vietnam Veterans.



ACQUIRED PROJECTS FOR FISCAL YEAR 2012 - 2013

Project Number	Recipient Name	Project Name	Acres	Local Match	FTC Grant Amount Delivered	Total Project Cost	Date Closed or Reimbursed
08-066-FF8	City of Live Oak	Live Oak Heritage Park – CSX Parcel	29.86	\$10,716.50	\$42,866.00	\$53,582.50	July 16, 2012
08-082-FF8	Alachua Conservation Trust, Inc.	Santa Fe River Preserve	167.09	\$284,744.27	\$618,632.23	\$903,376.50	September 26, 2012
11-031-FF11	Brevard County	Veteran's Memorial Park Expansion	43.53	\$1,202,250.00	\$800,000.00	\$2,002,250.00	February 20, 2013
11-047-FF11	Pasco County	Morsani Ranch/Jumping Gully	598.63	\$1,540,560.00	\$1,027,040.00	\$2,567,600.00	April 1, 2013
11-012-FF11	City of Winter Garden	Tucker Ranch Heritage Park	208.96	\$1,263,228.00	\$840,252.00	\$2,103,480.00	January 31, 2013
11-001-FF11	Palm Beach County	Cypress Creek Natural Area Phase I	160.00	\$10,277,960.48	\$3,489,389.52	\$13,767,350.00	June 18, 2013
11-014-FF11	Orange County	Kelly Park 3 rd Addition/Camp Joy Property	33.75	\$547,910.84	\$364,560.00	\$912,470.84	June 19, 2013
TOTALS FISCAL YEAR 2012-13:			1,241.82	\$15,127,370.09	\$7,182,739.75	\$22,310,109.84	

Acquired Projects for Fiscal Year 2012 - 2013



ACQUIRED PROJECTS BY COUNTY 1991-2013

Project #	Project Name	Recipient	Project #	Project Name	Recipient
Alachua					
91-049-P1A	Hogtown Creek Greenway	City of Gainesville/Alachua County	08-082-FF8	Santa Fe Preserve	Alachua County
99-039-P9A	Depot Junction	City Of Gainesville	Baker		
			03-040-FF3	St. Mary's Shoals	Baker County
01-103-FF1	Micanopy Native American Heritage Preserve	Town of Micanopy	08-069-FF8	St. Mary's Shoals - Phase II	Baker County
01-141-FF1	Blues Creek Ravine and Fox Pond	Alachua Conservation Trust	08-069-FF8	St. Mary's Shoals - Phase II - Rhoden Parcel	Baker County
01-149-FF1	Beville Creek	City of Gainesville	Bay		
02-043-FF2	Mill Creek Nature Preserve	Alachua County	92-021-P2A	Thomas Drive Beach Access	Bay County
02-077-FF2	Duval Neighborhood Stormwater Park	City of Gainesville	92-042-P2A	Parker Tract	City of Mexico Beach
02-089-FF2	San Felasco Conservation Corridor	City of Alachua	93-027-P3A	Oaks by the Bay	City of Panama City
05-024-FF5	Payne's Prairie Sweetwater Addition	Alachua County	93-026-P3A	Sweetbay Wetlands Preserve	City of Panama City
04-071-FF4	Tuscawilla Lake	Alachua Conservation Trust	96-006-P7A	Parker Environmental Exploratorium	City of Parker
06-110-FF6	Barr Hammock Ledwith Prairie	Alachua County/Conservation Trust for Florida	96-025-P7A	Venetian Sunset Park	City of Panama City
06-096-FF6	Prairie Creek Basin	Alachua Conservation Trust	01-153-FF1	Coral Bean Addition Under the Oaks Park	City of Parker
06-096-FF6	Prairie Creek Basin	Alachua Conservation Trust	01-150-FF1	Pier Park	City of Panama City Beach
06-095-FF6	Hogtown Creek Headwaters	City of Gainesville	Brevard		
07-115-FF7	Phifer Flatwoods	Alachua County	91-016-P1A	Turkey Creek Scrub	Brevard County
07-114-FF7	Levy Prairie	Alachua County	95-019-P56	Manatee Sanctuary Park	City of Cape Canaveral
08-085-FF8	Little Orange Creek	City of Hawthorne	95-063-P56	Malabar Sanctuary Greenway I	Town of Malabar
08-085-FF8	Little Orange Creek - Blackwood Parcel	City of Hawthorne	95-064-P56	Ais Lookout Point	City of Palm Bay
11-021-FF11	Turkey Creek Hammock Preserve	Alachua County	95-079-P56	Wavcrest Park Extension	Town of Indianlantic
96-019-P7A	Malabar Sanctuary Greenway	Town of Malabar	99-073-P9A	Carpenter's Sand Pine Preserve	City of Oakland Park
96-059-P7A	Turkey Creek Blueway	City of Palm Bay	00-025-P10	McNab Park Restoration	City of Tamarac

96-060-P7A	Castaway Point	City of Palm Bay	00-055-P10	Richardson Property	City of Wilton Manors/Broward County
96-062-P7A	Banana River Park	City of Cape Canaveral	00-071-P10	Pembroke Pines Preservation Expansion	City of Pembroke Pines
98-044-P8A	Oceanfront Wildlife and Habitat Preserve	City of Satellite Beach	01-047-FF1	Plantation Central Open Space	City of Plantation
98-076-P8A	Melbourne Beach Loggerhead Park	Town of Melbourne Beach	01-074-FF1	Pleasant Oceanside Preserve	City of Deerfield Beach
99-044-P9A	Oceanfront Preservation	City of Satellite Beach / Brevard County	01-076-FF1	Island City Park Addition	City of Wilton Manors
01-065-FF1	Shoreside Park	Town of Palm Shores	01-093-FF1	Hollywood North Beach Addition	Broward County / City of Hollywood
01-077-FF1	Cocoa Conservation Area	City of Cocoa	01-113-FF1	Sheridan Street ESL Addition	Broward County
02-038-FF2	Downtown Stormwater Park	City of Titusville	01-118-FF1	Miramar Pineland ESL Addition	Broward County / City of Miramar
03-020-FF3	Eau Gallie Square	City of Melbourne	02-002-FF2	Central Broward Regional Park	Broward County & City of Lauderdale
03-035-FF3	Cocoa Beach Maritime Hammock Preserve	City of Cocoa Beach	02-018-FF2	Florence Hardy Park	City of Ft. Lauderdale
05-030-FF5	Max K. Rodes Park	Brevard County	02-021-FF2	Last Cypress East	Broward County/City of Lauderdale Lakes
06-055-FF6	Molitor Property	City of Titusville	02-022-FF2	Last Cypress West	Broward County / City of Lauderdale Lakes
06-001-FF6	Anderson Stormwater Park	City of Rockledge	02-049-FF2	Southwest Nature and Recreational Park	City of Pembroke Pines
06-080-FF6	Thousand Islands Conservation Area	Brevard County	02-088-FF2	Davie's Wetlands Restoration	Town of Davie
11-031-FF11	Veteran's Memorial Park	Brevard County	03-010-FF3	Highlands Scrub Addition	Broward County
Broward			03-011-FF3	Helene Klein Pineland Preserve	Broward County
93-025-P3A	Environmental Preserve	Town of Pembroke Park	03-012-FF3	Hillsboro Pineland ESL Addition	Broward County
94-008-P4A	The Sawgrass Sanctuary	City of Sunrise	03-014-FF3	Mills Pond Addition	Broward County
94-015-P4A	Sheridan Oak Forest	City of Hollywood/Broward County	03-022-FF3	Country Estates Open Space & Fishing Hole	Town of Southwest Ranches
95-055-P56	Island City Park Preserve	City of Wilton Manor	03-025-FF3	Southwest Meadows Sanctuary	Town of Southwest Ranches
96-014-P7A	Sabal Pines Park	City of Coconut Creek	03-026-FF3	Frontier Trails Conservation Area	Town of Southwest Ranches
96-058-P7A	Sandy Ridge Sanctuary Academic and Outdoor Recreation Village	City of Coral Springs	03-043-FF3	Tamarac Preservation Park	City of Tamarac
99-036-P9A	Hollywood North Beach Park Addition 2	City of Pembroke Pines	04-003-FF4	Whispering Woods Park	Broward County/City of Coral Springs
04-007-FF4	Little Fuzzy Bunny Cove	Broward County	99-064-P9A	San Casa	Charlotte County
04-008-FF4		Broward County/City of Dania Beach	01-018-FF1	Bayshore Linear Park	Charlotte County

04-011-FF4	Hillsboro Pineland Vista View Regional Park Expansion	Broward County	01-024-FF1	Cedar Point Park	Charlotte County
04-002-FF4	Calusa Corners	Broward County	01-026-FF1	South County Regional Park Tippicanoe Scrub Environmental Park, Phase II	Charlotte County
04-019-FF4	Deerfield Beachfront Park Sunny Lake Trailhead & Conservation Park	Town of Southwest Ranches City of Deerfield Beach/Town of Hillsboro	01-063-FF1	Cedar Point Park Phase III	Charlotte County
04-010-FF4	West Creek Pineland Passage	Town of Davie	03-091-FF3	Amberjack Scrub Env. Park Phase II	Lemon Bay Conservancy
05-006-FF5	Coontie Hatchee Landing Broward County and City of Ft. Lauderdale	Broward County Broward County/City of Ft. Lauderdale	04-004-FF4	Bayshore Park Addition Phase II	Charlotte County
04-009-FF4	Davie Farm Park	North Fork Riverwalk	08-014-FF8	Buck Creek Preserve	Charlotte County
05-002-FF5	Central Broward Regional Park Chapel Trail Nature Preserve	Town of Davie Broward County City of Pembroke Pines	Citrus		
05-048-FF5	Atkins Park Addition	Calhoun County	95-015-P56	Wallace Brooks/Lake Henderson	City of Inverness
06-011-FF6	Punta Gorda Nature Park	Charlotte County	95-016-P56	Cooter Pond	City of Inverness
07-004-FF7	Oyster Creek Park - Dunwoody	Charlotte County	96-002-P7A	Nature Coast Environmental Center	City of Crystal River
Calhoun					
96-055-P7A	Sunrise Park	Charlotte County	01-138-FF1	Kings Bay	City of Crystal River
Charlotte			08-088-FF8	Three Sisters Springs	City of Crystal River
92-012-P2A	Master Mitigation Preserve	Collier County	Clay		
94-027-P4A	Lake Avalon County Park	Collier County	96-022-P7A	Keystone Beach - Smyser Park	City of Keystone Heights
94-020-P4A	The Naples Preserve	City of Naples	02-045-FF2	Green Cove Springs Nature Preserve	City of Green Cove Springs
96-008-P7A			02-097-FF2	Moccasin Slough	Clay County
98-026-P8A			04-078-FF4	Camp Chowenwaw	Clay County
98-025-P8A			05-050-FF5	Green Cove Springs Nature Preserve	City of Green Cove Springs
Collier			99-013-P9A	Englewood Beach	Charlotte County
94-023-P4A			00-009-P10	Castaway Island Preserve	City of Jacksonville
95-017-P56			01-034-FF1	Cradle Creek Preserve	City of Jacksonville Beach
01-040-FF1			01-112-FF1	McGirts Creek Park Expansion	City of Jacksonville
			01-115-FF1	Reddie Point Preserve	City of Jacksonville

03-018-FF3	Lely Mitigation Park	Collier County	01-120-FF1	Jacksonville-Baldwin Rails to Trails Buffer	City of Jacksonville
03-073-FF3	Preserve the Preserve	Collier County	01-122-FF1	Beach and Peach Urban Park	City of Jacksonville
04-042-FF4	Goodland Harbor Gordon River Water Quality Park	Collier County	02-086-FF2	Yellow Water Creek Trailhead	City of Jacksonville
05-027-FF5		Collier County	03-046-FF3	McGirts Creek Park Expansion, Phase II	City of Jacksonville
06-043-FF6	Gordon River Greenway Park	Collier County	03-048-FF3	Sal Taylor Creek Preserve	City of Jacksonville
Columbia			04-052-FF4	Jacksonville-Baldwin Rails to Trails Buffer II	City of Jacksonville
94-001-P4A	Alligator Lake	Columbia County	05-044-FF5	Cedar Point Preserve Phase II	City of Jacksonville
Dixie			06-042-FF6	Ribault River Urban Waterfront Park	City of Jacksonville
02-096-FF2	Joe Henry Anderson Senior Park Mershon Williams Yellow Jacket Landing	Dixie County	06-078-FF6	Huguenot Memorial Park Expansion	City of Jacksonville
08-063-FF8		Dixie County	Escambia		
Duval			95-014-P56	Jones Swamp Wetlands Preserve	Escambia County
91-046-P1A	Cedar Point	City of Jacksonville	98-090-P8A	Old Chimney Property	City of Pensacola
92-031-P2A	Ortega Stream Valley Park	City of Jacksonville	98-089-P8A	Scenic Highway Bluffs Preserve	City of Pensacola
92-032-P2A	Blue Cypress	City of Jacksonville	96-033-P7A	North Escambia River Site	Town of Century
93-006-P3A	County Dock Historical Park	City of Jacksonville	05-041-FF5	Jones Swamp Wetlands Preserve	Escambia County
95-051-P56	Intracoastal Waterway Park Dutton Island Intracoastal Waterway Park	City of Atlantic Beach City of Jacksonville/City of Atlantic Beach	Flagler		
95-058-P56	Tree Hill Nature Center	City of Jacksonville	91-023-P1A	Princess Place	Flagler County
96-050-P7A	Addition Julington Creek Headwaters Park	City of Jacksonville	93-016-P3A	Princess Place II	Flagler County
96-052-P7A	Julington Creek Headwaters Park II	City of Jacksonville	95-013-P56	Silver Lake Park	City of Flagler Beach City of Flagler Beach/Flagler County
98-094-P8A	Dutton Island	City of Jacksonville/City of Atlantic Beach	96-005-P7A	Flagship Harbor Preserve	Flagler County/Town of Marineland
99-018-P9A		Flagler County	98-083-P8A	River to Sea Preserve at Marineland	
99-062-P9A	Mala Comprá Greenway	Flagler County	Gilchrist		
00-105-P10	Matanzas Estuary GeoPark	Town of Marineland	98-033-P8A	Fort Fanning Heritage Park	City of Fanning Springs
01-013-FF1	Palm Coast Greenway	City of Palm Coast	Gulf		
02-013-FF2	Mirror Lake Watershed	City of Flagler Beach	93-028-P3A	Shipyard Cove	City of Port St. Joe

04-050-FF4	Mala Compra Oceanfront Park Addition	Flagler County	08-077-FF8	Port St. Joe Waterfront Park	City of Port St. Joe
04-024-FF4	Ocean Walk Park	City of Flagler Beach	Hardee	Peace River Park	City of Wauchula
08-027-FF8	Long's Landing Estuary	City of Palm Coast	98-001-P8A		
Franklin			Hernando		
93-011-P3A	Apalachicola Riverwalk	City of Apalachicola	93-012-P3A	Cypress Lakes	Hernando County
94-013-P4A	Carrabelle Riverwalk & Tidal Basin Park	City of Carrabelle	95-029-P56	The Good Neighbor Trail	City of Brooksville
95-078-P56	Apalachicola Waterfront	City of Apalachicola	98-053-P8A	Cypress Lakes Preserve Addition	Hernando County
00-001-CS6	City of Apalachicola ACSC	City of Apalachicola	Hillsborough		
02-040-FF2	Carrabelle Wildlife Park	City of Carrabelle	91-053-P1A	Cypress Creek Preserve	Hillsborough County
04-063-FF4	Apalachicola Waterfront Park Crooked River Lighthouse Addition	City of Apalachicola	92-038-P2A	Riverhills Park Addition	City of Temple Terrace
04-076-FF4		City of Carrabelle	92-039-P2A	Temple Terrace Riverfront Park	City of Temple Terrace
06-048-FF6	Apalachicola Riverwalk Phase III - Senath Parcel	City of Apalachicola	92-041-P2A	Cypress Street Restoration Park	Hillsborough County/City of Tampa
06-048-FF6	Apalachicola Riverwalk Phase III	City of Apalachicola	93-018-P3A	Blackwater Creek Preserve	Hillsborough County
06-093-FF6	Indian Creek Park	Franklin County	94-009-P4A	Blackwater Hammock	City of Tampa
06-048-FF6	Apalachicola Riverwalk Phase III - Cotton Exchange & Spohrer	City of Apalachicola	95-027-P56	Massie/Zack Park and Preserve	City of Plant City
07-111-FF7	Apalachicola Riverwalk Phase V - Holmes & Peterson	City of Apalachicola	95-044-P56	Apollo Beach Park	Hillsborough County
08-078-FF8	Apalachicola Riverwalk Phase VI - McLemore Parcel	City of Apalachicola	95-045-P56	Flynn Lake Nature Park	Hillsborough County
Gadsden			96-010-P7A	Sterling Downs	Hillsborough County
00-086-P10	Chattahoochee Nature and Rec Tanyard Creek Preservation Park Phase II	City of Chattahoochee	98-047-P8A	New Tampa Flatwoods	City of Tampa
04-070-FF4		City of Quincy	98-048-P8A	Fort Brooke Park	City of Tampa
98-054-P8A	Alafia Scrub	Hillsborough County	99-055-P9A	Oslo Riverfront South	Indian River County
99-010-P9A	Cypress Creek Preserve - Phase II	Hillsborough County	98-057-P8A	Harmony Oaks	Indian River County
99-026-P9A	Ribbon of Green	City of Tampa	98-058-P8A	Oyster Bar Salt Marsh	Indian River County
00-032-P10	Riverhills Park Addition	City of Temple Terrace	99-056-P9A	North Sebastian C.A. Addition	Indian River County/ Indian River County/ Town of Indian River Shores/ and City of Vero Beach
00-045-P10	Fort Brooke Park Addition	City of Tampa	01-154-FF1	Lost Tree Island	

01-048-FF1	Triple Creek Greenway	Hillsborough County	02-058-FF2	Kroegel Homestead	Indian River County
01-049-FF1	Town 'n Country	Hillsborough County	03-084-FF3	Orca South Link	Indian River County
02-073-FF2	Fish Hawk Creek	Hillsborough County	03-044-FF3	St. Sebastian River Greenway	Marine Resources Council
02-093-FF2	Fort Brooke - Phase III	City of Tampa	04-025-FF4	Ansin Tract	Indian River County
03-081-FF3	River Tower Park	City of Tampa	05-038-FF5	Russell Grove River Buffer	Indian River County
03-083-FF3	South MacDill 48	City of Tampa	06-037-FF6	ORCA Diamond Tract	Indian River County
04-032-FF4	Rocky Creek Trails	Hillsborough County	07-030-FF7	Fellsmere Trailhead Preserve	City of Fellsmere
03-015-FF3	Alafia River - Phase I	Hillsborough County	07-039-FF7	South Prong Preserve	Indian River County
04-029-FF4	Alafia River - Phase II	Hillsborough County	05-039-FF5	Jones' Pier	Indian River County
04-029-FF4	Alafia River - Phase II	Hillsborough County	Jackson		
06-019-FF6	Triple Creek Greenway - Phase II	Hillsborough County	95-077-P56	Merritt's Mill Pond	Jackson County
08-022-FF8	Lake Dan Preserve - Phase I	Hillsborough County	03-066-FF3	Marianna Performing Arts Park	City of Marianna
Holmes			Lake		
96-035-P7A	Wrights Creek Site	Holmes County	94-029-P4A	Minneola Park & Lake Scenic Trail	City of Minneola
Indian River			95-041-P56	Lake Dora Recreation Park	City of Tavares
92-018-P2A	Wabasso Scrub	Indian River County	96-007-P7A	Old Dixie Highway Park	Town of Lady Lake
93-002-P3A	Prang Island	Indian River County/ City of Vero Beach	96-015-P7A	Tavares Elementary School Park	City of Tavares
95-025-P56	AGC Industrial Tract	City of Sebastian/ Indian River County	03-086-FF3	PEAR Park Gateway	Lake County
94-032-P4A	Sebastian Scrub	City of Sebastian/ Indian River County	04-030-FF4	Ferndale Preserve on Lake Apopka	Lake County
96-043-P7A	St. Sebastian PUD	Indian River County/ City of Sebastian	03-104-FF3	Leesburg Greenway Trail	City of Leesburg
96-044-P7A	Round Island South	Indian River County	03-104-FF3	Leesburg Greenway Trail	City of Leesburg
01-055-FF1	Hallstrom Farmstead	Indian River County	04-028-FF4	Mount Dora Rec. & Nature Park	City of Mount Dora
07-056-FF7	Inland Groves	City of Clermont	04-056-FF4	Magnolia Ravine	City of Tallahassee
08-070-FF8	Inland Groves, Phase II	City of Clermont	04-067-FF4	Copeland Sink	Leon County / Apalachee Land Cons.
Lee			05-010-FF5	Capital Cascades Trail - Seg. 4	City of Tallahassee
91-007-P1A	Pine Island Eagle Habitat	Lee County	05-011-FF5	St. Marks Headwaters - Booth Phase II	Leon County
92-015-P2A	Hickey Creek Mitigation Park	Lee County	05-075-FF5	Timberlane Ravine Phase II	City of Tallahassee
93-019-P3A	Silver Key	City of Sanibel	05-010-FF5	Capital Cascades Trail - Seg. 4	City of Tallahassee

95-003-P56	Gulfside Park Addition	City of Sanibel	06-114-FF6	Dr. Charles Billings Greenway	City of Tallahassee
96-046-P7A	Cultural and Environmental Learning Center	Town of Fort Myers Beach	07-102-FF7	Fred George Greenway	Leon County
99-029-P9A	East Riverside Neighborhood Park	City of Ft. Myers	07-102-FF7	Fred George Greenway	Leon County
01-031-FF1	Caloosahatchee Creeks Preserve	Lee County	07-102-FF7	Fred George Greenway	Leon County
01-039-FF1	Pond Apple Park	City of Sanibel	Levy		
02-072-FF2	San Carlos Bay - Bunche Beach Preserve	Lee County	92-003-P2A	Yankeetown W R Park	Town of Yankeetown
02-098-FF2	Newton Beach Park	Town of Ft. Myers Beach	93-004-P3A	Yankeetown Wilderness Addition	Town of Yankeetown
03-059-FF3	City of Bonita Springs Island Park	City of Bonita Springs	98-102-P8A	Devil's Hammock Phase I	Levy County
03-060-FF3	Prairie Pines Preserve Addition	Lee County	00-018-P10	Withlacoochee Gulf Pathways	Town of Yankeetown
04-031-FF4	Wild Turkey Strand Preserve	Lee County	01-080-FF1	Cedar Key Cemetery Point Park	City of Cedar Key
08-012-FF8	Galt Preserve	Lee County	Manatee		
07-047-FF7	Pine Island at Matlacha Pass	Sarasota Conservation Foundation	94-024-P4A	Manatee Headwaters at Duette	Manatee County
Leon			96-029-P7A	Palmetto Estuary Preservation Project	City of Palmetto
94-034-P4A	Lafayette Heritage Trail	City of Tallahassee	98-008-P8A	Riverview Pointe	Manatee County
95-034-P56	Governor's Park	City of Tallahassee	98-009-P8A	1912 Cortez Schoolhouse & Nature Preserve	Manatee County
95-037-P56	Lake Munson Preserve	Leon County	98-006-P8A	Grassy Point Preserve	City of Holmes Beach
95-036-P56	Okeehopee Prairie	Leon County	01-004-FF1	Bennett Park	Manatee County
99-083-P9A	Timberlane Ravine	City of Tallahassee	02-006-FF2	Robinson Preserve	Manatee County
00-035-P10	Jackson View	Leon County	03-075-FF3	Moody Branch	Manatee County
01-152-FF1	St. Marks Headwaters	Leon County	04-041-FF4	The Conservatory	Manatee County
02-110-FF2	Tallahassee Junction	City of Tallahassee	05-026-FF5	Hidden Harbour	Manatee County
07-001-FF7	Neal Preserve	Manatee County	94-040-P4A	Village Green	Village of Key Biscayne
Marion			95-039-P56	Oleta River Corridor	Miami-Dade County
92-045-P2A	Silver Creek Property	Marion County	96-037-P7A	County Line Scrub	Miami-Dade County
92-033-P2A	O'Neal Site	City of Ocala	95-021-P56	Hattie Bauer Hammock	Miami-Dade County
95-033-P56	Dunnellon Municipal Park	City of Dunnellon	98-028-P8A	Spring Garden Point on the Miami River	Miami-Dade County
95-009-P56	Scott Springs	City of Ocala	98-046-P8A	Sunny Isles Beach Oceanfront Park	Miami-Dade County/City of Miami
98-043-P8A	Fort King	City of Ocala and Marion County	98-023-P8A	Biscayne Coastal Wetlands	City of Sunny Isles Beach

07-022-FF7	Blue Run of Dunnellon Park	City of Dunnellon	00-022-P10	Tree Island Park	Miami-Dade County
Martin			00-053-P10	Pinecrest Parrot Jungle Deering Estate-Cutler Glade Rehydration Addition	City of Pinecrest
91-031-P1A	Kiplinger Site	Martin County	01-043-FF1	Boystown/Camp Matecumbe	Miami-Dade County
91-029-P1A	Gomez Avenue	Martin County	01-119-FF1	West Kendall District Park Addition	Miami-Dade County
92-036-P2A	Beachwalk/Pasleys	Martin County	03-019-FF3	C100/Bayfront Property (Haas)	Miami-Dade County
92-035-P2A	Otter Creek	Martin County	05-042-FF5	Fern Isle Park Expansion	Village of Palmetto Bay
93-014-P3A	Lake Okeechobee Ridge	Martin County	06-025-FF6	Doral North Park Phase II	City of Miami
94-019-P4A	Rocky Point	Martin County	08-005-FF8	Coco Plum Beach	City of Doral
94-045-P4A	Stuart Beach Addition	Martin County	Monroe	Rate of Growth Controls	Monroe County
96-038-P7A	FIT Site	Martin County	91-041-P1A	Recreational L.O.S. Standards	Monroe County
98-045-P8A	Haney Creek	City of Stuart	93-001-CS1	Recreation & Open Space Element	Monroe County
99-022-P9A	Poppleton Creek Watershed	City of Stuart	93-002-CS1	Berg Property	City of Key West
00-011-P10	Santa Lucea	Martin County	95-001-CS3	Monroe County Comprehensive Land Authority #10	Monroe County
01-081-FF1	Bonair Beach	Town of Jupiter Island Martin County Regional Land Trust	98-097-P8A	Monroe County Comprehensive Land Authority #11	Monroe County
01-133-FF1	Delaplane Peninsula Blueway	Martin County	99-010-MCC	Monroe County Comprehensive Land Authority #12	Monroe County
03-003-FF3	Bob Graham Beach Addition	Martin County	99-011-MCC	Monroe County Comprehensive Land Authority #13	Monroe County
03-004-FF3	Jensen Beach	Martin County	99-012-MCC	Monroe County Comprehensive Land Authority #14	Monroe County
03-092-FF3	Pal Mar East Phase I	Martin County	99-013-MCC	Monroe County Comprehensive Land Authority #15	Monroe County
04-046-FF4	Pal Mar East Phase II	Martin County	99-014-MCC	Monroe County Comprehensive Land Authority #16	Monroe County
08-047-FF8	Clifton S. Perry Beach	Martin County	99-015-MCC	Monroe County Comprehensive Land Authority #1	Monroe County
Miami-Dade			99-016-MCC	City of Key Colony Beach	Monroe County
91-001-P1A	Deering Estates Addition	Miami-Dade County	99-001-M.C.	Monroe County Comprehensive Land Authority #1	Monroe County
99-017-MCC	Monroe County Comprehensive Land Authority #17	Monroe County	01-001-CS7	North Village Neighborhood Park	City of Key Colony Beach
99-018-MCC	Monroe County Comprehensive Land Authority #18	Monroe County	01-058-FF1	Key West Botanical Gardens	Village of Islamorada
99-019-MCC	Monroe County Comprehensive Land Authority #19	Monroe County	03-034-FF3		City of Key West
99-020-MCC	Monroe County Comprehensive Land Authority #20	Monroe County			

99-021-MCC	Monroe County Comprehensive Land Authority #21	Monroe County	05-009-FF5	Green Turtle Hammock	Islamorada, Village of Islands
99-022-MCC	Monroe County Comprehensive Land Authority #22	Monroe County	04-001-FF4	Marathon Waterfront Park	City of Marathon
99-002-MCC	Monroe County Comprehensive Land Authority #2	Monroe County	08-028-FF8	Key Tree Cactus	Village of Islamorada
99-003-MCC	Monroe County Comprehensive Land Authority #3	Monroe County	Nassau		
99-004-MCC	Monroe County Comprehensive Land Authority #4	Monroe County	92-011-P2A	North Beach Park	City of Fernandina Beach
99-005-MCC	Monroe County Comprehensive Land Authority #5	Monroe County	95-018-P56	Seaside Park	City of Fernandina Beach
99-006-MCC	Monroe County Comprehensive Land Authority #6	Monroe County	95-059-P56	Egans Creek Greenway Phase I	City of Fernandina Beach
99-007-MCC	Monroe County Comprehensive Land Authority #7	Monroe County	96-013-P7A	Egans Creek Greenway Phase II	City of Fernandina Beach
99-008-MCC	Monroe County Comprehensive Land Authority #8	Monroe County	01-025-FF1	Egans Creek Greenway, Phase III	City of Fernandina Beach
99-009-MCC	Monroe County Comprehensive Land Authority #9	Monroe County	03-041-FF3	Goffinsville - Nassau River Park	Nassau County
99-023-MCC	Monroe County Comprehensive Land Authority #23	Monroe County	04-026-FF4	American Beach Historic Park	Nassau County
99-024-MCC	Monroe County Comprehensive Land Authority #24	Monroe County	04-026-FF4	American Beach Historic Park - Nelson Parcels	Nassau County
Okaloosa					
94-014-P4A	Turkey Creekwalk - Barnett	City of Niceville	98-065-P8A	Shingle Creek Recreational Preserve	Osceola County/City of Kissimmee
96-004-P7A	Oak Tree Park	City of Mary Esther	01-143-FF1	Shingle Creek Recreational Preserve North	Osceola County
98-020-P8A	Okaloosa Island Marler Park	Okaloosa County	03-029-FF3	Shingle Creek	Osceola County
00-004-P10	Oak Tree Nature Park Phase II	City of Mary Esther	03-030-FF3	Lake Tohopekaliga Park and Marina	Osceola County
00-067-P10	Miracle Strip Park on the Sound	City of Fort Walton Beach	06-015-FF6	Shingle Creek Recreational Preserve Center	Osceola County/City of Kissimmee
04-006-FF4	The Shore at Crystal Beach	City of Destin	Palm Beach		
			91-022-P1A	Seacrest Scrub	Palm Beach County/City of Boynton Beach

08-007-FF8	Captain Royal Melvin Park	City of Destin	92-020-P2A	Osborne Site	City of Boca Raton
Orange			92-022-P2A	Olympia York/Serenoa Glades	City of Boca Raton
93-009-P3A	Airport Lakes Park	City of Orlando	92-024-P2A	Section 16 Addition	City of West Palm Beach
92-010-P2A	Kelly Park Expansion	Orange County	93-008-P3A	Rosemary Scrub	Palm Beach County/ City of Boynton Beach
95-053-P56	Minnehaha Park Canal	City of Maitland	93-015-P3A	Section 10 Addition	City of West Palm Beach
96-031-P7A	Oakland Community Nature Park	Town of Oakland	93-017-P3A	South Bay Park	City of South Bay
01-029-FF1	Eagle Nest Cornerstone Park	City of Orlando	93-020-P3A	Hidden Valley North/Rosemary Ridge Preserve	City of Boca Raton
01-056-FF1	Kelly Park Addition	Orange County	94-005-P4A	Delray Oaks	Palm Beach County/City of Delray Beach
01-083-FF1	Parcel 105	Orange County	94-021-P4A	Section 15 Addition	City of West Palm Beach
01-053-FF1	Orange County Natural Resource Center	Orange County	95-007-P56	Sandoway House	City of Delray Beach/ Palm Beach County
03-002-FF3	Ft. Christmas Community Park Addition	Orange County	95-046-P56	Juno Hills Oceanfront	Town of Juno Beach/ Palm Beach County
04-051-FF4	Howell Branch Preserve - Phase II	City of Winter Park	96-011-P7A	Frenchman's Forest	Palm Beach County/ City of Palm Beach Gardens
11-014-FF11	Kelly Park 3rd Addition- Camp Joy Property	Orange County	98-066-P8A	Hungryland Slough Tract - Bee Line Corridor Natural Area	Palm Beach County
Osceola			98-067-P8A	Bee Line Corridor Natural Area	Palm Beach County
91-009-P1A	Split Oak Mitigation Park	Orange County/ Osceola County	99-015-P9A	High Ridge Scrub Addition	Palm Beach County
Osceola			99-028-P9A	Bee Line Corridor Phase II	Palm Beach County
95-011-P56	Lake Lizzic Recreation Park	Osceola County	00-029-P10	Harbor View Park	Town of Jupiter
01-016-FF1	Section 16 West Addition to the West Palm Beach Preserve	City of West Palm Beach	95-067-P56	Port Richey Waterfront Park	City of Port Richey
01-033-FF1	North Jupiter Flatwoods	Palm Beach County / Town of Jupiter	04-014-FF4	Strauber Memorial Highway Coastal Park	Pasco County
01-035-FF1	Overlook Scrub	Palm Beach County/ Town of Hypoluxo	07-089-FF7	Upper Pithlachacotee River Preserve	Pasco County
01-036-FF1	Lake Park Scrub Natural Area	Palm Beach County and Town of Lake Park	08-039-FF8	Pasco Palms	Pasco County
01-037-FF1	Acreage Pines Natural Area	Palm Beach County	11-047-FF11	Morsani Ranch	Pasco County
01-100-FF1	Ombres Property	City of West Palm Beach	Pinellas		

02-051-FF2	Blue Lake Scrub	Palm Beach County/ City of Boca Raton	91-002-P1A	North Anclote	City of Tarpon Springs
02-100-FF2	Limestone Creek	Palm Beach County	92-007-P2A	Brooker Creek	Pinellas County
03-105-FF3	Cypress Creek Natural Area	Palm Beach County	93-023-P3A	Redington Shores Nature Refuge	Town of Redington Shores
04-023-FF4	Jaycee Park Acquisition	City of Boynton Beach	94-004-P4A	Brooker Creek Enhancements	Pinellas County
04-049-FF4	Cypress Creek Natural Area	Palm Beach County	94-010-P4A	Waterfront Park	City of Gulfport
04-062-FF4	Old School Square Addition	City of Delray Beach	94-011-P4A	Indian Shores Nature Refuge	Town of Indian Shores
05-028-FF5	Indian Lakes Natural Area	Palm Beach County	94-017-P4A	Bayside Park	City of Belleair Beach
06-017-FF6	Delaware Scrub Natural Area	Town of Jupiter and Palm Beach County	95-001-P56	South Pasadena Habitat Extension	City of South Pasadena
06-041-FF6	Susan DuBois Kindt Estate	Palm Beach County	95-004-P56	Marina Park Addition	City of Safety Harbor
07-010-FF7	Cypress Creek Preserve, Phase III	Palm Beach County	95-022-P56	Indian Rocks Beach Nature Preserve	City of Indian Rocks Beach
08-001-FF8	Cypress Creek Natrual Area, Phase IV	Palm Beach County	96-026-P7A	McKay Creek Greenway	Pinellas County
11-001-FF11	Cypress Creek Natrual Area, Phase V	Palm Beach County	98-005-P8A	Mobbly Bayou Wilderness Preserve	City of Oldsmar
Pasco					
91-039-P1A	Boyce/Wetstone	Pasco County	99-007-P9A	Sunset Vista Trailhead	City of Treasure Island
94-007-P4A	Pithlachascotee River Park	City of New Port Richey	99-024-P9A	Madeira Beach Causeway	City of Madeira Beach City of Oldsmar and Pinellas County
00-042-P10	Clam Bayou Park Expansion	City of St. Petersburg	00-026-P10	Mobbly Bayou	Green Horizon Land Trust, Inc.
01-015-FF1	Kapok Wetland and Floodplain Restoration	City of Clearwater	05-008-FF5	Bok Tower Sanctuary - Moore, Yoars & Pease Parcel	Green Horizon Land Trust, Inc.
01-022-FF1	Wall Springs	Pinellas County	05-008-FF5	Bok Tower Sanctuary - SR Estate/Colburn Parcels	Green Horizon Land Trust, Inc.
01-144-FF1	Historic Bayview	City of Clearwater	05-008-FF5	Bok Tower Sanctuary - Story Parcel	Green Horizon Land Trust, Inc.
02-035-FF2	Wall Springs Coastal Addition II	Pinellas County	Putnam		
03-006-FF3	Brooker Creek Preserve	Pinellas County	01-136-FF1	Melrose Heritage Park	Putnam County
03-080-FF3	Mobbly Bayou Preserve	City of Oldsmar/Pinellas County	01-137-FF1	Tanglewylde Center	Putnam County
			08-020-FF8	Georgetown Riverside Park	Putnam County

04-021-FF4	Kumar Property	City of Oldsmar	08-084-FF8	Nine Mile Swamp Park and Trail	Putnam County / Putnam Land Conservancy
05-017-FF5	Wall Springs Coastal Addition	Pinellas County	Santa Rosa		
07-097-FF7	Weaver Park	City of Dunedin	94-012-P4A	Riverwalk Expansion	City of Milton
07-054-FF7	Lake Chautauqua Equestrian & Nature Trail	City of Clearwater	00-082-P10	Russell Harbor Landing Expansion	City of Milton
07-097-FF7	Weaver Park - Colonial Park Parcel	City of Dunedin	Sarasota		
08-009-FF8	Wall Springs Coastal Addition IV	Pinellas County	92-009-P2A	Myakkahatchee Creek Environmental Park	City of North Port
Polk			93-003-P3A	Myakkahatchee Creek Environmental Park III	City of North Port
92-002-P2A	Lake Bonny Community Park	City of Lakeland	94-025-P4A	Myakkahatchee Creek Environmental Park	City of North Port
92-006-P2A	Lake Howard	City of Winter Haven	96-041-P7A	Hog Creek Habitat Restoration	City of Sarasota
95-028-P56	Mount Pisgah - Peace River	Polk County	98-072-P8A	Oak Shores Reclamation	Sarasota County
96-001-CS4	Green Swamp Greenway, Phase II	Polk County	99-076-P9A	Lemon Bay Preserve	Sarasota County
99-049-P9A	Lakeland Highlands Scrub	Polk County	99-077-P9A	North River Road Preserve	Sarasota County
04-033-FF4	Lake Hartridge Nature Park	City of Winter Haven	00-019-P10	Manasota Scrub Preserve	Sarasota County
04-075-FF4	MacKay Garden and Lakeside Preserve	City of Lake Alfred	01-008-FF1	Pocono Trails Preserve	Sarasota County
05-008-FF5	Bok Tower Sanctuary	Green Horizon Land Trust, Inc.	01-045-FF1	Venice Gulf View Park	City of Venice
06-020-FF6	Gator Creek Preserve	Polk County	01-028-FF1	Curry Creek Preserve	Sarasota County
05-008-FF5	Bok Tower Sanctuary - Marks Parcel	Green Horizon Land Trust, Inc.	02-027-FF2	Red Bug Slough	Sarasota County
02-034-FF2	Wilson Family Park	Sarasota County	St. Lucie		
05-018-FF5	Bay Preserve at Osprey	Sarasota Conservation Foundation	93-024-P3A	Bear Point Sanctuary	St. Lucie County
05-012-FF5	Lemon Bay Park Addition	Sarasota County	94-003-P4A	Kings Island Preserve	St. Lucie County
05-014-FF5	Sleeping Turtles	Sarasota County	94-022-P4A	Ocean Bay	St. Lucie County
06-004-FF6	Blackburn Point Park Addition	Sarasota County	95-031-P56	Brinkhaven at Oak Hammock Acres	City of Port St. Lucie
08-024-FF8	Legacy Park	City of Venice	95-052-P56	Indrio North Savannas	St. Lucie County
Seminole			95-062-P56	Walton Scrub Homestead	St. Lucie County/City of Port St. Lucie
95-020-P56	Twin Rivers II Preserve	City of Oviedo	95-065-P56	Middle Cove Park	St. Lucie County

03-055-FF3	Jetta Point Property	Seminole County	96-017-P7A	St. Lucie Pinelands	St. Lucie County
03-088-FF3	Winter Miles St. Johns Historic Property (Lansing Property)	City of Oviedo	98-071-P8A	Bluefield Ranch	St. Lucie County
06-008-FF6		Seminole County	99-001-P9A	Pepper Park	St. Lucie County
St. Johns			99-020-P9A	Paleo Hammock	St. Lucie County
98-003-P8A	Southeast Intraoastal Waterway Park	St. Johns County	99-025-P9A	North Fork Addition	St. Lucie County
99-002-P9A	St. Johns River Park	St. Johns County	01-023-FF1	Westmorland River Park	City of Port St. Lucie and St. Lucie County
01-009-FF1	Moultrie Creek/Intraoastal Tract	St. Johns County	01-067-FF1	Sheraton Plaza Preserve	St. Lucie County
03-038-FF3	Ft. Mose Historic State Park Addition	St. Johns County	01-069-FF1	Indrio Scrub Preserve	St. Lucie County
04-064-FF4	Canopy Shores	St. Johns County	01-075-FF1	Ancient Oaks	St. Lucie County
05-032-FF5	Nease Beachfront Park	St. Johns County	01-082-FF1	St. Lucie Village Heritage Park	Town of St. Lucie Village
05-034-FF5	Beluthahatchee Park	St. Johns County	01-098-FF1	North Fork of the St. Lucie River Phase II	St. Lucie County
05-034-FF5	Beluthahatchee Park	St. Johns County	02-056-FF2	Ten Mile Creek East	St. Lucie County
06-033-FF6	Mussallem Beachfront Park	St. Johns County	02-071-FF2	North Fork of the St. Lucie River - Phase III	St. Lucie County
06-034-FF6	Vilano Beach Park	St. Johns County	02-091-FF2	Indrio Blueway Buffer	St. Lucie County
08-018-FF8	Ocean Hammock Park	City of St. Augustine Beach	03-069-FF3	Capron Trail Park	St. Lucie County
08-019-FF8	Usina Intraoastal Park	St. Johns County	04-044-FF4	Paleo Hammock Addition	St. Lucie County
08-044-FF8	Cora C. Harrison	Town of Hastings	03-079-FF3	Ten Mile Creek West	St. Lucie County
08-044-FF8	Cora C. Harrison	Town of Hastings	05-069-FF5	Hackberry Hammock	St. Lucie County City of New Smyrna Beach
06-060-FF6	Indrio North Savannahs Two	St. Lucie County	98-112-P8A	North Beach Community Park	City of Daytona Beach
05-069-FF5	Hackberry Hammock	St. Lucie County	01-032-FF1	Daytona Beach Historic Pier & Boardwalk	
04-045-FF4	Heathcote Botanical Park - City Parcels	St. Lucie County	01-071-FF1	Doris Leeper Spruce Creek	Volusia County
04-045-FF4	Heathcote Botanical Park - Stewart Parcel	St. Lucie County	01-129-FF1	Town Center	City of Port Orange
07-088-FF7	Moore's Creek Linear Park	City of Fort Pierce	02-003-FF2	Catholic Diocese Tract	Volusia County
07-080-FF7	Jetty Oceanfront Park Expansion	City of Fort Pierce	02-094-FF2	Town Center Marcantonio Property	City of Port Orange
07-027-FF7	Harbor Branch Preserve	St. Lucie County	03-064-FF3	Ponce Preserve Inlet	Town of Ponce Inlet
08-057-FF8	Becker Preserve	St. Lucie County	04-005-FF4	Doris Leeper Spruce Creek - Phase II	Volusia County

Sumter									
93-010-P3A	Lake Panasoffkee Headwaters	Sumter County	04-060-FF4	Timucuan Oaks Botanical Gardens	Town of Ponce Inlet				
Suwannee									
			04-018-FF4	Russell Property	City of Port Orange				
			07-020-FF7	Esther Street Beachfront Park	City of New Smyrna Beach				
92-030-P2A	Little River Springs	Suwannee County	08-004-FF8	Stanaki Property	City of Port Orange				
08-066-FF8	Live Oak Heritage Park	City of Live Oak	Wakulla						
08-066-FF8	Live Oak Heritage Park- CSX Parcel	City of Live Oak	93-029-P3A	Shell Point Beach	Wakulla County				
Taylor			94-041-P4A	Purify Creek Acquisition Project	Wakulla County				
07-051-FF7	Keaton Beach Coastal Park	Taylor County	98-110-P8A	Panacea Mineral Springs	Wakulla County				
Volusia			07-057-FF7	Big Bend Maritime Center	Wakulla County				
91-042-P1A	Lake Beresford	Volusia County	Walton						
91-043-P1A	Colby/Alderman	Volusia County	02-099-FF2	Garfield Access Addition	Walton County				
92-023-P2A	Indian River Lagoon Preserve	City of New Smyrna Beach	03-001-FF3	Stallworth Lake Preserve	Walton County				
93-021-P3A	Gemini Springs	Volusia County	08-006-FF8	Town Center Park & Preserve	Walton County				
94-033-P4A	Ponce Preserve	Town of Ponce Inlet	Washington						
94-038-P4A	Boy Scouts Property	City of DeLand	96-034-P7A	Holmes Creek Boat Ramp	Washington County				
95-024-P56	Painters Pond	City of DeLand							
96-039-P7A	Green Springs	Volusia County							
98-010-P8A	North Peninsula In-holdings	Volusia County							
98-036-P8A	Lake Helen Greenway	City of Lake Helen							

SUMMARY OF FINANCIAL ACTIVITIES

2013-14

<i>FLORIDA COMMUNITIES TRUST PROGRAM OPERATIONS</i>	
2012-2013 APPROPRIATIONS	
Transfer / Section 215.32	\$521,455.00
General Revenue Service Charges	\$13,000.00
Fixed Capital Outlay (<i>Florida Forever</i> Program TF is excluded)	\$-
TOTAL 2012-2013 APPROPRIATIONS	\$534,455.00
06/30/2012 YEAR END BALANCE	\$598,661.30
<u>2012-2013 Deposits</u>	
Interest from Investments	\$288.96
PLUS 2012-2013 DEPOSITS	\$288.96
<u>2012-2013 Expenditures</u>	
Transfer / Section 215.32	\$521,455.00
Service Charge to General Revenue	\$3,850.99
LESS 2012-2013 EXPENDITURES	\$525,305.99
6/30/2013 YEAR END BALANCE of the FCT Fund^A	\$73,644.27
<u>2012-2013 Expenditures from the Land Acquisition Trust Fund^B</u>	
Salaries and Benefits	\$243,049.00
Expenses	\$4,758.00
Indirect Cost	\$90,195.48
Total	\$338,002.48
<i>FLORIDA FOREVER PROGRAM</i>	
06/30/2012 YEAR END BALANCE	\$ -
<u>2012-2013 Deposits</u>	
Grants and Donations	\$-
Transfers in within DEP (<i>Florida Forever</i> TF)	\$7,123,949.00
PLUS 2012-2013 DEPOSITS	\$7,123,949.00
<u>2012-2013 Expenditures</u>	
Returns & Refunds	\$ -
Expenditures for Land Acquisition Activities	\$7,123,949.00
LESS 2012-2013 EXPENDITURES	\$7,123,949.00
6/30/2013 YEAR END BALANCE	\$ -
Remaining Florida Forever Appropriation as of 06/30/2013^C	\$15,163,489.14

Once the Florida Communities Trust Fund is closed, the balance will be transferred to the appropriate fund.

B The Florida Communities Trust Fund was funded primarily from a transfer from the Land Acquisition Trust Fund. Now that FCT resides within DEP, the program can be funded directly from LATF. This is the first annual report that reflects this transition.

C The *Florida Forever Program* Trust Fund was terminated on July 1, 2013. The balance was transferred to the *Florida Forever* Trust Fund. Now that FCT resides within DEP, there is no need for two *Florida Forever* Funds.

FLORIDA COMMUNITIES TRUST BOARD MEMBERS

Herschel T. Vinyard Jr.



On January 3, 2011, Governor Rick Scott appointed Mr. Herschel T. Vinyard Jr. as Secretary of the Florida Department of Environmental Protection. Appointed to lead one of the most diverse state agencies in Florida, Secretary Vinyard oversees Florida's environmental regulatory programs; the acquisition, conservation and management of public lands; and the protection of Florida's water resources through the department's water quality efforts and oversight of the state's five water management districts.

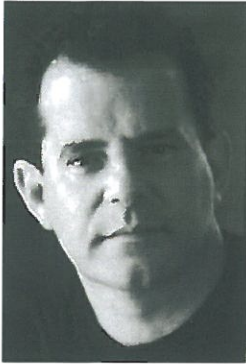
Secretary Vinyard's top priorities for the agency include creating a more consistent and efficient regulatory process, ensuring the protection of Florida's diverse water bodies and maintaining the state's legacy of an award-winning state park system. Secretary Vinyard brings more than 20 years of experience in environmental law and business management to DEP.

In his previous role as Director of Business Operations at BAE Systems Southeast Shipyards, the world's second largest defense contractor, Secretary Vinyard was responsible for strategic planning, business development and regulatory and government affairs. He also served on a number of professional and civic associations that drew upon his expertise in environmental and complex business practices, including board service on the Jacksonville Port Authority, the Jacksonville Regional Chamber of Commerce and the Manufacturers Association of Florida.

During his decade in private practice at Smith, Hulsey and Busey, one of Florida's most well-respected law firms, Secretary Vinyard counseled clients in state and federal environmental compliance and permitting. He also served as a chair of the environmental and land use law section of the Jacksonville Bar Association. Secretary Vinyard received his undergraduate and law degrees from Louisiana State University.

FLORIDA COMMUNITIES TRUST BOARD MEMBERS

Albert Alfonso (resigned December 2012)



Mr. Albert E. Alfonso is a founding principal and president of Alfonso Architects, an award-winning architectural firm in Tampa, formed in 1998 by Alfonso, his brother Carlos and their partner Angel del Monte.

Alfonso was educated at the University of Florida, where he earned his Master of Arts degree in 1983. He received the Eduardo Garcia Award for Young Architects in 1987 and under his leadership Alfonso Architects received the American Institute of Architects (AIA) Florida Firm of the Year award in 2003 and 2007.

Most recently, Alfonso was awarded the prestigious American Institute of Architects State of Florida 2008 Design Honor. Recent projects recognized by the Florida State AIA Design Awards program include Tampa International Airports Airside C, Nielsen Media Research Global Technology Center, University of South Florida (USF) Center for Advanced Healthcare and the USF Medical Office Building.

Alfonso is also an accomplished painter and in the summer of 2009 he was given a reception for the unveiling of his painting “St. Francis and the Angel,” which was on display at the Church of San Francesco in Cortona, Italy. His paintings have also been featured at the Tuscan Sun Festival 2010 in Cortona, Italy and in a December 2010 collaborative exhibition called “Painting the Poem, Poeming the Painting” at The Morean Arts Center in St. Petersburg, Florida.

FLORIDA COMMUNITIES TRUST BOARD MEMBERS

Lynette Self



Ms. Lynette Self is a native of Jacksonville and has been involved in her city through various business and community organizations. She was a member of the Jacksonville City Council from 1999-2007, where she chaired and served on various committees. She was the 2001 recipient of the Charles E. Webb award, which is presented to the year's outstanding council member by the council president.

Self is owner and president of Rose of Sharon European Florist. As a small business owner, Self is involved in various business organizations including the Association of Bridal Consultants, National Association of Catering Executives (where she is also a member of the executive committee) and the Jacksonville Chamber of Commerce. She has also served on the Jacksonville Regional Chamber of Commerce as president of the Downtown Council, the Board of Governors and the Executive Committee.

Past and present boards include the Police Athletic League, Special Olympics finance chair, Junior Achievement of Northeast Florida and the Affordable Housing Commission. She has received the Chamber's Downtown Council Small Business Leader of the Year Award, was selected Jacksonville's 2003 Woman Business Owner of the Year and recognized as a Woman of Influence by the *Jacksonville Business Journal*. She was awarded *The Knot* "Best of Weddings Award" from 2010-2012 as well as WeddingWire Bride's Choice Award from 2010-12. Her philanthropic endeavors include support of Taylor Care, Associated Builders and Contractors, JA Girls, Brides Against Breast Cancer, Make-a-Wish Foundation and ABC Women's Council.

Self and her husband, Lake, have been married since 1978 and have two adult children.

FLORIDA COMMUNITIES TRUST BOARD MEMBERS

Ruth Stanbridge



Ms. Ruth Stanbridge grew up in Indian River County and served as a county commissioner from 1998-2002. She was appointed as the Indian River County Historian in 1997, and owns a small historical and environmental research and grant writing firm in Vero Beach.

Stanbridge has an extensive background dealing with environmental and growth management issues. She served for 35 years in the Florida Game and Freshwater Fish Commission's Vero Beach Biological Field Office. She was appointed to the Indian River County Planning and Zoning Commission in 1983, at a time when the county's first Comprehensive Land Use Plan was being developed. She was appointed by former Governor Jeb Bush to the Florida Greenways and Trails Council and she served as the vice-chair of the Health and Human Service subcommittee for the Florida Association of Counties.

Stanbridge received the Indian River Lagoon National Estuary Program's Leadership Award in 2002, the Marine Resource Council's Outstanding Elected Official Award in 2001 and Indian River County's Woman of the Year Award in 1983. In 2001, the U.S. Department of the Interior presented her with a Refuge Hero special commendation for her work on preserving, restoring and expanding Pelican Island National Wildlife Refuge, the first National Wildlife Refuge. Her book *Special Places: A First Field Guide*, which is a guide to the natural and historical resources of Indian River and south Brevard counties, was published in 2005. Stanbridge and her husband, Bill, have been married for more than 40 years and have two daughters and two grandsons.

FLORIDA COMMUNITIES TRUST BOARD MEMBERS

Erick Lindblad



Mr. Erick Lindblad has served as the Executive Director of the Sanibel-Captiva Conservation Foundation since 1986. He has been instrumental in the Foundation's acquisition of more than 1,900 acres of wildlife preserve areas on and around Sanibel and Captiva and has been involved in a variety of land management activities. In addition, the Foundation has an established nature center, native plant nursery, marine laboratory and ongoing programs in environmental education, sea turtle conservation and natural resource policy.

As part of his commitment to the sustainable development of southwest Florida, Lindblad served on Conservation 20/20, Lee County's Conservation Land Acquisition and Stewardship Advisory Council and the Land Management Subcommittee. He was also appointed by the Lee County Board of County Commissioners to serve as the county's representative on the Babcock Ranch, Inc. Board, which oversees the management of the state's 71,000-acre Babcock Ranch Preserve in Lee and Charlotte counties.

Prior to his tenure at the Sanibel-Captiva Conservation Foundation, Lindblad was the director of Newfound Harbor Marine Institute at Seacamp on Big Pine Key, Florida from 1979 to 1986. He graduated in 1974 from Millikin University in Illinois with a Bachelor of Arts degree in Biology.

FLORIDA DEPARTMENT OF
ENVIRONMENTAL PROTECTION
FLORIDA COMMUNITIES TRUST 2012-
2013 ANNUAL REPORT

RICK SCOTT, Governor
HERSCHEL T. VINYARD JR., Secretary

3900 Commonwealth Boulevard
Tallahassee, Florida 32399-3000
(850) 245-2555
www.floridacommunitiestrust.org

SEPTEMBER 2013

Section 380.512, Florida Statutes, requires the Florida Communities Trust to submit to the Governor, the Speaker of the House of Representatives, the President of the Senate and the minority leaders of the House of Representatives and the Senate, within 3 months after the end of its fiscal year, a complete and detailed report setting forth the following:

- (1) Its operations and accomplishments
- (2) Its receipts and expenditures during the fiscal year, in accordance with the categories or classifications the trust establishes for its operating and capital outlay purposes.
- (3) Its assets and liabilities at the end of its fiscal year and the status of reserve, special or other funds.
- (4) An evaluation of the effectiveness of the projects undertaken in carrying out this part.
- (5) Identification of additional funding, legislation, or other resources required to carry out the objectives of this part more effectively.
- (6) An account of any other trust or department duties established by this part.

