



Florida Department of Transportation

CHARLIE CRIST
GOVERNOR

605 Suwannee Street
Tallahassee, FL 32399-0450

STEPHANIE C. KOPELOUSOS
SECRETARY

September 30, 2010

Mr. Jerry McDaniel, Director
Office of Policy and Budget
Executive Office of the Governor
1701 Capitol
Tallahassee, Florida 32399-0001

Ms. JoAnne Leznoff, Council Director
House Full Appropriations Council
221 Capitol
Tallahassee, Florida 32399-1300

Mr. David Coburn, Staff Director
Senate Policy and Steering Committee on Ways and Means
201 Capitol
Tallahassee, Florida 32399-1300

Dear Directors:

Pursuant to Chapter 216, Florida Statutes, our Long Range Program Plan (LRPP) for the Department of Transportation is submitted in the format prescribed in the budget instructions. The information provided electronically and contained herein is a true and accurate presentation of our mission, goals, objectives and measures for the Fiscal Year 2011-12 through Fiscal Year 2015-2016. This submission has been approved by Stephanie Kopelousos, Secretary of the Department of Transportation.

Sincerely,

Stephanie C. Kopelousos
Secretary

SK/bws

Florida Department of Transportation

Long Range Program Plan for Fiscal Years 2011-2012 Through 2015-2016

September 30, 2010

Table of Contents

	Page
Agency Mission	1
Agency Goals, Objectives Outcomes and Projection Tables	3
Linkage to Governor’s Priorities	5
Trends and Conditions	7
Agency Workforce Plan - Exhibit I	17
Performance Measures and Standards - Exhibit II	19
Performance Measure Assessment - Exhibit III	24
Performance Measure Validity and Reliability - Exhibit IV	33
Associated Activities Contributing to Performance Measures – Exhibit V	88
Agency-Level Unit Cost Summary – Exhibit VI	95
Glossary of Terms and Acronyms	97

This page left blank intentionally.

Department of Transportation
Mission

Mobility, Economic Prosperity, Preservation

The department will provide a safe transportation system that ensures the *MOBILITY* of people and goods, enhances *ECONOMIC PROSPERITY*, and *PRESERVES* the quality of our environment and communities.

This page left blank intentionally.

Florida Department of Transportation Goals, Objectives, Outcomes and Projection Tables

GOAL #1 Preserve and manage a safe, efficient transportation system.

OBJECTIVE 1A: Ensure that 80 percent of pavement on the State Highway System meets department standards.

OUTCOME: Percentage of State Highway System pavement meeting department standards.

Baseline/Year	FY 2011-12	FY 2012-13	FY 2013-14	FY 2014-15	FY 2015-16
FY 02/03 – 81%	80%	80%	80%	80%	80%

Projected targets are set in s. 334.046(4), F.S.

OBJECTIVE 1B: Ensure that 90 percent of FDOT-maintained bridges meet department standards while keeping all FDOT-maintained bridges open to the public safe.

OUTCOME: Percentage of FDOT-maintained bridges which meet department standards.

Baseline/Year	FY 2011-12	FY 2012-13	FY 2013-14	FY 2014-15	FY 2015-16
FY 02/03 – 93%	90%	90%	90%	90%	90%

Projected targets are set in s. 334.046(4), F.S.

OBJECTIVE 1C: Ensure the State Highway System is maintained in acceptable physical condition (maintenance rating of 80).

OUTCOME: Maintain condition rating of the State Highway System as measured against the department’s maintenance standards.

Baseline/Year	FY 2011-12	FY 2012-13	FY 2013-14	FY 2014-15	FY 2015-16
FY 02/03 – 83	80	80	80	80	80

Projected targets are set in s. 334.046(4), F.S.

GOAL #2 Enhance Florida’s economic competitiveness, quality of life and transportation safety.

OBJECTIVE 2A: Provide a state highway system as part of a transportation infrastructure for the movement of people and goods.

OUTCOME: Total budget for intrastate highway construction and arterial highway construction divided by the number of lane miles let to contract.

Baseline/Year	FY 2011-12	FY 2012-13	FY 2013-14	FY 2014-15	FY 2015-16
FY 99/00 – \$4,699,322	18,593,644	20,521,033	13,588,445	10,778,598	Not Available

Florida Department of Transportation Goals, Objectives, Outcomes and Projection Tables

OBJECTIVE 2B: Increase the availability of public transportation.

OUTCOME: Transit ridership growth compared to population growth.

Baseline/Year	FY 2011-12	FY 2012-13	FY 2013-14	FY 2014-15	FY 2015-16
FY 94/95 – 0.50	1.86	1.86	1.86	1.86	1.86

GOAL #3 Organizational excellence by promoting and encouraging continuous improvement.

OBJECTIVE 3A: Deliver the work program.

OUTCOME: Percentage of construction contracts planned for letting that were actually let.

Baseline/Year	FY 2011-12	FY 2012-13	FY 2013-14	FY 2014-15	FY 2015-16
FY 00/01 – 98.7%	95%	95%	95%	95%	95%

This outcome is also monitored by the Florida Transportation Commission.

OBJECTIVE 3B: Provide executive leadership and administrative support for department programs.

OUTCOME: Administrative costs as a percent of the department's total budget.

Baseline/Year	FY 2011-12	FY 2012-13	FY 2013-14	FY 2014-15	FY 2015-16
FY 95/96 – 0.86%	<2.0%	<2.0%	<2.0%	<2.0%	<2.0%

OBJECTIVE 3C: Efficiently collect tolls.

OUTCOME: Operational cost per toll transaction.

Baseline/Year	FY 2011-12	FY 2012-13	FY 2013-14	FY 2014-15	FY 2015-16
FY 04/05/96 – \$0.149	<\$0.16	<\$0.16	<\$0.16	<\$0.16	<\$0.16

Due to Turnpike Operations merging into Turnpike Enterprises and this measure no longer including the Miami/Dade Expressway heavy traffic flow and low operating costs, the projected targets for this measure remains stable.

Linkage To Governor’s Priorities

The Florida Department of Transportation recognizes the Governor’s six priorities for building a better Florida: Protecting our Communities, Strengthening Florida’s Families, Keeping Florida’s Economy Vibrant, Success for Every Student, Keeping Floridians Healthy and Protecting Florida’s Natural Resources.

Consistent with the Goals of the 2025 Florida Transportation Plan and the Governor’s priorities, the department has established three key areas of focus:

- Safety – the public's highest expectation;
- Mobility/Congestion Relief – efficient movement of people and goods; and
- Service – serving the needs of our customers.

Protecting our communities, through safety, is the traveling public’s highest expectation. Reducing deaths and injuries on Florida’s transportation system is our number one priority. The efficient mobility of people and goods throughout Florida is paramount to the mission of the department and squarely at the center of the department’s work program. The third focus area is service. Florida has invested billions of dollars in roads, airports, transit facilities and services, seaports and other elements of the transportation system. Regular maintenance and improvements keep these assets operating efficiently, extend their useful life and can delay the substantial cost of reconstructing or replacing them.

Viable, multimodal transportation systems are crucial for continued diversification of Florida’s economy. The design and implementation of transportation systems are likewise crucial for community development and family living. The Governor’s priorities are included in the mission of the Florida Department of Transportation (FDOT), which states: *“The department will provide a safe transportation system that ensures the mobility of people and goods, enhances economic prosperity and preserves the quality of our environment and communities.”*

The table below relates the Governor’s priority focus areas to the department’s mission statement and identifies the department’s goals and programs which are linked to these priorities.

Priority Focus	Goals & Programs	Actions & Initiatives
Protecting Our Communities	Preservation/Infrastructure State Safety Office Office of Motor Carrier Compliance	<ul style="list-style-type: none"> • Bridge Inspection Program • Pavement/Maintenance Standards • Strategic Highway Safety Plan • Crash Location System • Truck Safety Inspections
Strengthening Florida’s Families	Safety	<ul style="list-style-type: none"> • Motor vehicle, bicycle and pedestrian safety

.....continued

Priority Focus	Goals & Strategies	Actions & Initiatives
<p>Keeping Florida's Economy Vibrant</p>	<p>Economic Competitiveness, System Preservation/ Management and Mobility</p> <p>Multimodal Passenger & Freight Mobility</p> <p>Seamless and Secure Transportation Systems</p> <p>Affordable Transportation Systems</p>	<ul style="list-style-type: none"> • Strategic Intermodal System (SIS) implementation • Florida Intrastate Highway System • Intelligent Transportation Systems (ITS) • Systems Planning • Financing Alternatives such as public/private partnerships • Enhance regional planning effort through programs such as Transportation Regional Incentive Program (TRIP)
<p>Success For Every Student</p>	<p>Mobility and Accessibility</p>	<ul style="list-style-type: none"> • Florida Traffic & Bicycle Safety Education Program • Support transportation systems in urbanized and rural areas • Crossing Guard Training • Safe Paths to School • Safe Routes to School
<p>Keeping Floridians Healthy</p>	<p>Motor Carrier Compliance Law Enforcement</p> <p>Pedestrian/Bike Program</p>	<ul style="list-style-type: none"> • Contraband Interdiction Program • Bicycle Trails • Safe Routes To School • Safe Driver Programs
<p>Protecting Florida's Natural Resources</p>	<p>Compatible Land Use and Transportation</p> <p>Livable Communities and Sustainable Growth</p> <p>Multimodal Personal Mobility</p>	<ul style="list-style-type: none"> • Efficient Transportation Decision Making process and SIS • Growth Management <ul style="list-style-type: none"> ○ Interagency cooperation on the integration of transportation and land use • Motor vehicle, bicycle and pedestrian safety • Safe Mobility for Life Program

Trends and Conditions

Pursuant to s. 339.155, F.S., a set of long-range goals has been developed in the 2025 Florida Transportation Plan:

- A safer and more secure transportation system for residents, businesses and visitors.
- Enriched quality of life and responsible environmental stewardship.
- Adequate and cost-efficient maintenance and preservation of transportation assets.
- A stronger economy through enhanced mobility for people and freight.
- Sustainable transportation investments for Florida's future.

To achieve these goals, pursuant to s. 334.046(2), F.S., the Department of Transportation (FDOT) has established the following mission statement:

“The department will provide a safe transportation system that ensures the mobility of people and goods, enhances economic prosperity and preserves the quality of our environment and communities.”

The mission statement and the supporting goals are setting a high standard for the FDOT. To achieve them, it is necessary for the department to analyze the strengths and weaknesses inherent in the system and identify challenges and threats facing the state and the department. The goals and objectives in the 2025 FTP form a policy framework to guide crucial investments in Florida's transportation system. Those investments must respond to growth in a manner that strengthens the economy, provides mobility choices for all and supports our environment and communities.

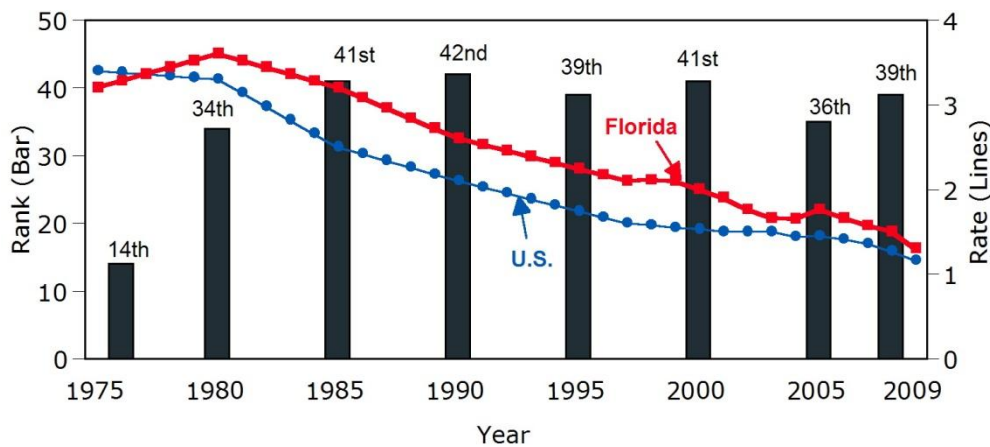
The 2060 FTP underway will express a 50 year vision for the state's transportation system – a vision to help ensure our state's economy, environment and communities are sustainable for future generations. It will acknowledge the immediate challenges facing us today, but also focus on the opportunities and issues, which may arise over the next 50 years. The 2060 FTP will plan for long term demographic, economic, environmental, technological, cultural and governmental transformations and consider the lasting impacts of those changes.

The need for a safe and more secure transportation system

Transportation safety and security involve entities outside of the transportation field and require close coordination and effective working relationships with adequate support at all levels. Safety lead roles fall upon FDOT and the Florida Department of Highway Safety and Motor Vehicles (Florida Highway Patrol) at the state level, and metropolitan planning organizations and local governments at the regional/local level. Security lead roles include the U.S. Department of Homeland Security, the Transportation Security Administration, other designated federal agencies and the Florida Department of Law Enforcement, with FDOT and other transportation partners in a shared role focused on improving security of the transportation system.

Transportation safety has been regarded as one of the highest goals for transportation policy. Every year tens of thousands of fatalities occur on the nation's highway systems. In 2009, 2,563 people died on Florida's highways, a decline of 14.1% from 2008. This makes Florida's fatality rate (per 100 million vehicles miles of travel) 1.30 compared to a national rate of 1.16. For the first time in a decade, motorcyclist fatalities decreased by 25% (376 in 2009 vs. 502 in 2008). Non-motorist fatalities were also on the decline. There were 99 bicyclist fatalities, a 16% decrease from 2008 and 482 pedestrians were killed, 4% fewer than in 2008.

Comparison of U.S. and Florida Fatality Rates (Per 100 million vehicle miles traveled)



Note: For rank, 1st = best; 2009 national and other state crash data are preliminary.

The trends in both the actual fatalities and the fatality rate have been declining. However, there is still much to do to improve safety for motorists and non-motorists. The Department of Transportation works hard to ensure Florida's transportation facilities are as safe as possible. Meanwhile, enforcement, licensing and education also aid in the reduction of traffic fatalities.

The need for adequate and cost-effective maintenance and preservation of transportation assets

The taxpayers of Florida have made a huge investment in transportation infrastructure. The department has primary jurisdiction over the State Highway System. Although this system consists of 12,088 (10 percent) of the 121,446 public road centerline miles in the state, it carries 53% of the traffic. One of the department's main responsibilities is keeping the State Highway System in acceptable physical condition. To achieve this, the department resurfaces roads, repairs or replaces bridges, and conducts routine maintenance activities such as mowing, litter removal and sign replacement. Regular maintenance and preservation of the transportation system keep it operating efficiently, extends its useful life, and delays the need for costly reconstruction or replacement.

By any estimate, it would cost billions of dollars to replace these transportation facilities, even without buying the right-of-way. Just like the family car, the transportation system requires significant continued investment to keep the *existing* facilities in good operating condition. This makes good economic sense, as well. Studies show that the cost of preventive maintenance treatments is much less than the cost of rehabilitation or reconstruction.¹

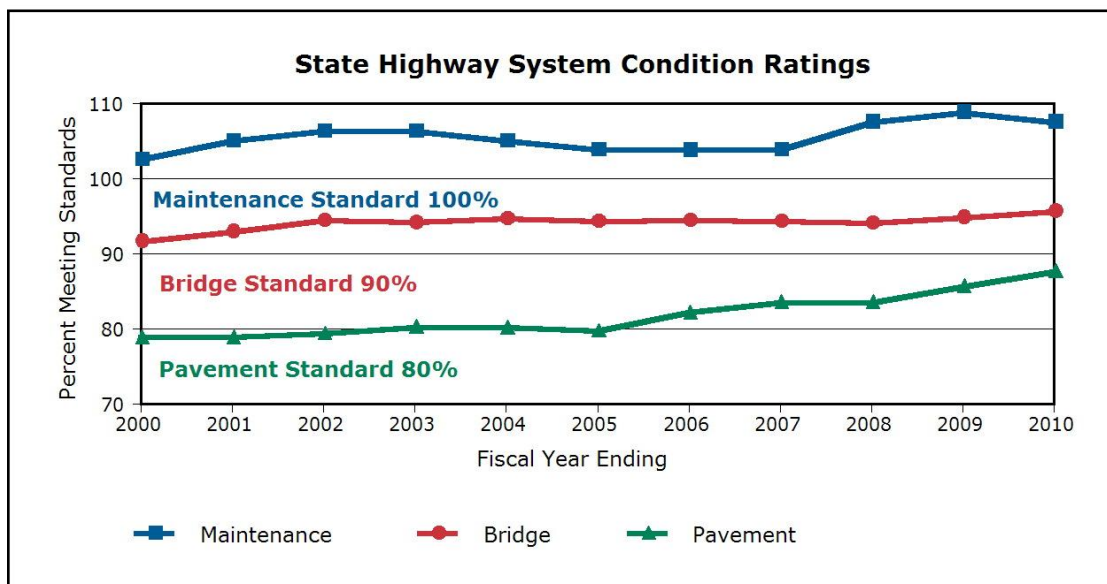
The 2000 Legislature recognized the importance of being fiscally responsible in taking care of transportation facilities by amending section 334.046(4)(a), F.S., to read:

Preservation. – Protecting the state’s transportation infrastructure investment.

Preservation includes:

1. *Ensuring that 80 percent of the pavement on the State Highway System meets department standards;*
2. *Ensuring that 90 percent of department maintained bridges meet department standards; and*
3. *Ensuring that the department achieves 100 percent of the acceptable maintenance standard on the state highway system.*

The department currently expends significant resources to meet these requirements. The graph below shows recent performance in each of these areas. Each area continues to achieve the standards set by the Legislature. Since 2001, the nation’s truckers have consistently ranked Florida’s roads as the second best with our rest stops and the I-75 segment among the best². The *2010 Highway Report Card* ranks Florida’s roads the best with the I-75 and I-10 segments among the top three best roads.



¹ Davies, Robert M. and Sorenson, Jim. "Pavement Preservation: Preserving Our Investment in Highways" <http://www.tfhrcc.gov/pubrds/jan00/pavement.htm> January, 2000.

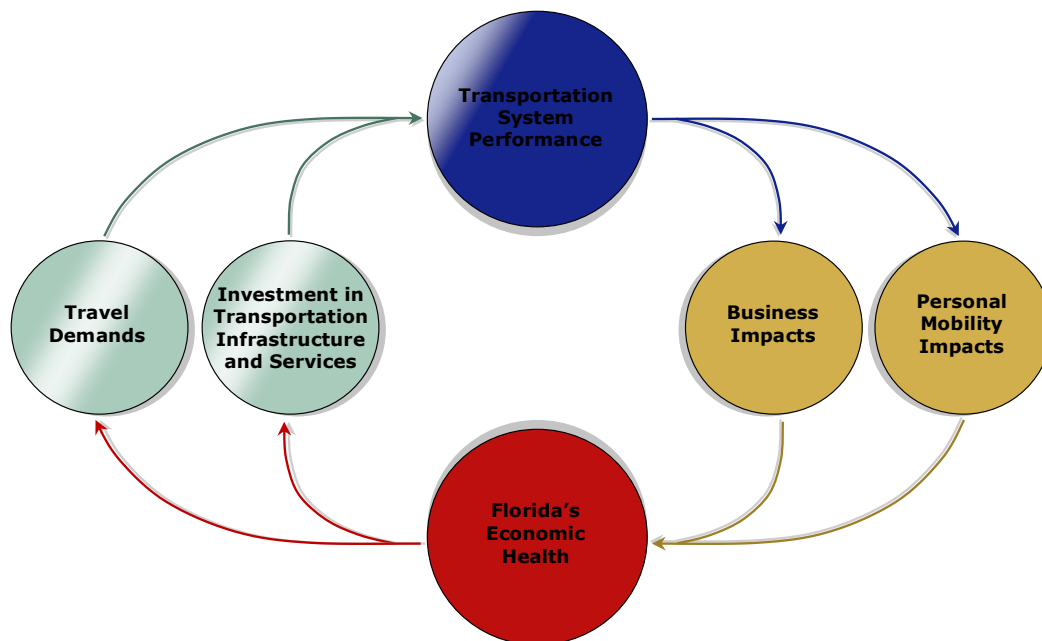
² eTrucker. Overdrive Magazine. <http://www.dot.state.fl.us/pavementmanagement/nationalpavementrankings.shtm>.

Why the transportation system is critical to Florida's participation in the global economy

Florida's transportation system plays an important role in maintaining the state's economic health. As a key component of our state's productivity, it impacts the economy in many ways. The location of Florida as a peninsula in the far corner of the continental United States, being a global tourist destination, and having active agricultural, military and mining sectors help create an economy very sensitive to the cost and quality of transportation. As the 22nd largest state geographically, with the fourth highest population, Florida requires extensive intrastate transportation to handle internal distribution and to support interconnection with the neighboring states.

Florida's investments in transportation services and infrastructure are a direct contributor to the economic health of the state. The pervasiveness of transportation in the economy results in spending on transportation being a significant contributor to jobs and economic activity in the state, both directly and indirectly.

The Role of Transportation in Florida's Economy



The department's study, *Economic Impacts of Florida's Transportation Investments* (published in September 2009) estimated that every dollar invested in transportation in Florida is estimated to result in a return of \$4.92 in long term benefits to residents and businesses. Like the rest of the nation, Florida is undergoing an economic recession and its transportation investments have been severely impacted. However, Work Program investments in Florida's transportation system yield significant benefits to both business and personal travel. The current national economic recession has further reinforced the importance of transportation investment in supporting a globally competitive economy.

Not only does transportation enable the economy to operate, but investment in transportation infrastructure and services directly affects the quality of life for present and future Floridians. To be competitive economically, Florida's transportation system must be able to successfully move growing numbers of residents and tourists and transport goods within Florida and to and from the United States and international markets. Florida must have a well-planned and adequately funded transportation system addressing accessibility and mobility needs.

Growth Opportunities

Florida Transportation Plan

The *2025 FTP* calls for the department, in cooperation with its partners, to accomplish five long range objectives related to the Strategic Intermodal System:

- Provide for smooth and efficient transfers for both people and freight between transportation modes and between the SIS and other transportation facilities.
- Reduce delay on and improve the reliability of SIS facilities.
- Preserve new capacity on the SIS for projected growth in trips between regions, states and nations, especially for trips associated with economic competitiveness.
- Expand the use of modal alternatives to SIS highways for travel and transport between regions, states and nations.
- Establish statewide criteria for identifying and developing new SIS facilities where such facilities are needed to connect the economic regions of the state, especially economically distressed areas, in coordination with regional and community visions.

The *2025 FTP* also recommends the following key implementation strategies related to the Strategic Intermodal System:

- Fully implement the SIS Strategic Plan and update the SIS designation and Strategic Plan at least once every five years based on guidance provided by the initial SIS Strategic Plan and the *2025 FTP*.
- Protect the global competitiveness and extend the capacity of Strategic Intermodal System hubs by supporting facility upgrades to accommodate new generation vehicles and technology.
- Ensure implementation of the SIS and regional programs gives appropriate attention to the balance between mobility, community and environmental needs in fast-growing, emerging regions.
- Make optimal use of existing transportation facilities and services through strategies addressing traffic operations, incident and emergency management, access management and surrounding land uses before expanding those facilities and services.
- Promote more effective use of existing rail and water corridors to move both people and freight.
- Introduce new modal options or develop new transportation hubs or corridors when existing facilities cannot meet mobility or connectivity needs.
- Create institutional structures supporting statewide, regional, and local mobility needs, building upon closer coordination between transportation, land use and economic development decisions.

Strategic Intermodal System

The *2020 FTP* called for the department, in cooperation with its Partners, to designate a Strategic Intermodal System and adopt a strategic plan for funding and managing it. In 2003, the Florida Legislature enacted and the Governor signed a law establishing the Strategic Intermodal System (SIS). The new system represents a fundamental shift in the way Florida views the development of – and makes investments in – transportation facilities and services of statewide and regional significance.

The Florida Department of Transportation has worked with all of its partners to develop a transportation system to enhance Florida's economic competitiveness. The SIS represents an effort to link Florida's transportation policies and investments to the state's economic development strategy, in keeping with the Governor's strategic imperative of diversifying Florida's economy.

The SIS comprises the state's largest and most strategic transportation facilities, including major air, space, water, rail, and highway facilities. The SIS facilities are the primary means for moving people and freight between Florida's diverse regions, as well as between Florida and other states and nations. The SIS is Florida's highest statewide priority for transportation capacity improvements.

The SIS focuses on complete end-to-end trips, rather than individual modes or facilities. The SIS plays a key role in defining roles and responsibilities in the planning and managing of Florida's transportation system – where the state is focused on international, interstate, statewide and interregional transportation service, and strengthened regional partnerships provide a structure for identifying and implementing regional priorities.

The department and its partners recommended, and the Legislature and Governor adopted, objective criteria for designating:

- *SIS* facilities meeting high levels of people and goods movement, generally supporting major flows of interregional, interstate and international trips; and
- *Emerging SIS* facilities meeting lower levels of people and goods movement, generally serving fast growing economic regions and Rural Areas of Critical Economic Concern.

FDOT recently updated the SIS Strategic Plan in cooperation with a wide range of statewide, regional, and local partners, extending a broad circle of consensus. A 31 member 2010 SIS Strategic Plan Leadership Committee provided overall guidance to this process. Members of the committee represented transportation agencies and providers, regional and local governments, business and economic development interests, and community and environmental interests. FDOT conducted extensive partner and public involvement in support of the Leadership Committee process as well as the plan update. The 2010 SIS Strategic Plan reflects the consensus of the Leadership Committee regarding changes to SIS goals, objectives, designation criteria, and other policies; and strategies to make SIS implementation more effective.

As part of the 2010 SIS Strategic Plan Update, policies were adopted calling for the Department in cooperation with its partners, to add new and refine specific existing designation criteria and thresholds.

Military access facilities were added to the original three types of designated facilities:

- Transportation **hubs** (ports and terminals) moving people or goods;
- Interregional **corridors** (highways, rail lines, waterways and other exclusive-use facilities) connecting major origin/destination markets;
- Intermodal **connectors** (highways, rail lines, or waterways) connecting hubs and corridors; and
- **Military Access Facilities** (highways and rail lines) connecting key strategic military installations to corridors.

As of January 29, 2010, the following is the current system summary:

Designated SIS and Emerging SIS Facilities		
Facility Type	SIS	Emerging SIS
Commercial airports/General aviation relievers	8	11
Spaceports	1	TBD
Deepwater seaports	7	3
Passenger terminals	26	9
Rail freight terminals	5	2
Rail corridors (miles)	1,700	420
Waterways (miles)	1,950	312
Highways (miles)	3,605	750
All Connectors (miles)	285	256
Urban Fixed Guideway Corridors (miles/stations)	TBD/TBD	-
Military Access Facilities (miles)	TBD	-

Totals include Planned facilities. TBD = to be designated.

SAFETEA-LU

The Safe, Accountable, Flexible, Efficient Transportation Equity Act: A Legacy for Users (SAFETEA-LU) originally provided federal funding for highway and transit improvements through 2009. SAFETEA-LU programs have been extended through 2010. Federal transportation funding currently provides about 35% of the statewide funding for the department's 5-year Work Program. The law:

1. Guarantees Florida's rate of return on those programs for which states receive funding by formula to 92%;
2. Protects Florida's Efficient Transportation Decision Making (ETDM) process;
3. Provides additional resources for transit services; and
4. Places additional emphasis on transportation safety on Florida's highways; transit systems, and bicycle and pedestrian facilities.

For more information please visit the FDOT web site at:

<http://www.dot.state.fl.us/planning/safetealu/>. Funding beyond 2010 is unclear at this time.

Why it is important to plan, design and build the transportation system to enhance quality of life and support community visions.

Quality of life in Florida, which can be positively or adversely affected based on *how* the transportation system is developed within the human and natural environment, can significantly impact the state's economic viability. While Florida's desirability as a place to locate new business development is linked to its accessibility, it is also linked to how the transportation system "fits" into the communities it serves. Additionally, transportation's environmental impacts on water and air quality must be balanced with meeting mobility needs.

Transportation system design must take into account the many factors affecting Florida's quality of life. These factors include the livability of communities; land use; Florida's fragile environment and the sustainability of resources; and the mobility needs of residents, visitors and businesses.

A key consideration in the decision making process should be the evaluation of the benefits of a proposed transportation action and potential impacts to communities. To the maximum extent feasible, transportation projects should be designed and built to be compatible and consistent with community visions. Transportation planning and decision making, including project selection, should also be integrated and coordinated with land use, water and natural resource planning and management. The identification and resolution of a full range of environmental concerns should occur early in the transportation planning and project development process.

One of the most important ways the department can ensure more effective management of issues related to transportation is to encourage early and continuous opportunities for public participation in the decision-making process. The department continues to strengthening its public involvement process to make it more meaningful, understandable and comprehensive by providing opportunities for participation.

The Efficient Transportation Decision Making (ETDM) process has been developed to assist in identifying all of these resources. ETDM allows more involvement earlier in the planning process through community outreach and consultation with resource agencies. The Master Plans and Action Plans for upgrades to existing SIS Multimodal Corridors will be keyed to the ETDM screening process ensuring all pertinent issues in the transportation corridor are addressed.

Florida's High Speed Rail Program will further enhance Florida's quality of life and sustainable communities. Florida's flat terrain, high growth rates, large numbers of tourists and the distance between major cities are ideal for high speed rail. With \$1.25 billion funding from the Federal Rail Administration, the construction of the Tampa-Orlando leg of the federally designated Tampa-Orlando-Miami high speed rail corridor is anticipated to start in 2012 and system operation is scheduled for 2015.

A sustainable transportation system supports and encourages healthy ecosystems; livable communities; a sound economy; mobility options; the efficient movement of people, goods and services; and minimized consumption of non-renewable resources. To attain a sustainable transportation system, policies and decisions need to balance state and local priorities for the environment, economy and social equity.

Threat Analysis

Providing mobility – meeting Floridians’ need to move people and freight – is transportation’s most essential function. In order to achieve this goal, a few factors affecting mobility need to be considered:

- Florida’s forecasted growing population and visitors will generate additional demand for travel via all modes of passenger and freight transportation.
- There is also an increasing demand for costly specialized transportation services, such as those serving transportation disadvantaged residents and seniors.
- Recent trends show economic activity and the demand for transportation will grow even faster than Florida’s population over the next 20 years. By 2035, the transportation system will need to serve over 25 million residents, and a substantial increase in freight movement and tourism.
- Over half of urban freeway miles are moderately or severely congested during peak traffic periods.
- Total vehicle-miles traveled on highways have increased, and are expected to continue to increase, much faster than highway lane miles.
- Reductions in current and near-term state transportation revenues since November 2006 have led to a reduction of about \$10 billion in commitments for transportation improvements.

The department realizes additional roadways, by themselves, will not solve our congestion problems. The solution to the congestion problem is a diverse set of options requiring funding commitments, as well as a variety of changes in the ways transportation systems are used. Travel choices, Intelligent Transportation Systems (ITS), and land use must be considered.

Many of Florida’s economic forecasts, especially for tourism and imports/exports, are tied directly to the provision of an adequate infrastructure. If facilities are not kept competitive (e.g. ports) or have inadequate capacity (e.g. roads and airports), Florida will become a less desirable place to live in, visit or do business.

Budget constraints and the revenue shortfalls will restrict the department’s ability to provide new services or expand existing ones. Further, an aging system will likely cost more to maintain, especially as infrastructures (bridges, buses, etc.) reach the end of their functional life.

Another area of concern is Florida's aging population, which is unique among the states. We have, and will continue to have, a significantly higher proportion of senior population than other states. This presents special challenges for transportation system safety and the provision of mobility services to those who may not be able to maintain independent movement.

Safety remains a concern. Florida's fatality rate (per 100 million vehicle miles traveled) has improved but is still higher than the national average. Florida also has high fatality rates for bicyclists, pedestrians and motorcyclists.

Attention to improving the security of transportation facilities has increased since September 11, 2001. Federal and state legislation imposing significant security measures at airports, seaports and other passenger and freight facilities nationwide has impacted the efficient movement of passengers and freight throughout the state and created additional financial pressures for transportation agencies. Hurricanes and other national disasters have also highlighted the importance of effective emergency response and the vulnerability of the transportation system to major disruptions.

These trends and conditions will need to be addressed if Florida is to *"provide a safe transportation system that ensures the mobility of people and goods, enhances economic prosperity, and preserves the quality of our environment and communities."*

Agency Workforce Plan
LRPP Exhibit I

This exhibit not required

Performance Measures and Standards
LRPP Exhibit II

Performance Measures and Standards LRPP Exhibit II

Department: Transportation Department No.: 55				
Transportation Systems Development		Code: 55100000		
Approved Performance Measures for FY 2010-11 (Words)	Approved Prior Year Standard FY 2009-10 (Numbers)	Prior Year Actual FY 2009-10 (Numbers)	Approved Standards for FY 2010-11 (Numbers)	Requested FY 2011-12 Standard (Numbers)
Number of Right-of-Way parcels acquired (Turnpike not included)	791	631	574	658
Number of projects certified ready for construction (Turnpike not included)	46	37	33	33
Ratio of transit ridership growth to population growth	1.48	N/A*	1.48	1.48
Average cost per requested one-way trip for transportation disadvantaged	\$12.90	est.\$8.14**	\$12.90	\$12.90
Number of passenger enplanements	70,000,000	67,003,534	68,500,000	68,000,000
Number of one-way public transit passenger trips	205,000,000	248,614,400**	225,000,000	225,000,000
Number of cruise passenger embarkments and disembarkments at Florida ports	15,000,000	12,702,633	15,000,000	15,000,000
Number of one-way trips provided (transportation disadvantaged)	5,700,000	est. 6,700,000	5,700,000	5,700,000

*FY 2009/10 estimated transit ridership growth ratio is not statistically valid for the current year. Both estimated transit ridership growth (numerator) and Florida's estimated population growth (denominator) were negative; leading to an inappropriate statistical ratio to measure the FY 2009/10 transit ridership. Please see Exhibit III (page 25) for additional explanation and details.

**These Transportation Disadvantaged performance measures data are based on FDOT funded trips, excluding AHCA funds.

Performance Measures and Standards

LRPP Exhibit II

Transportation Systems Operations	Code: 55150000			
Approved Performance Measures for FY 2010-11 (Words)	Approved Prior Year Standard FY 2009-10 (Numbers)	Prior Year Actual FY 2009-10 (Numbers)	Approved Standards for FY 2010-11 (Numbers)	Requested FY 2011-12 Standard (Numbers)
Maintenance condition rating of state highway system as measured against the department's Maintenance standards	80	86	80	80
Percent of commercial vehicles weighed that were overweight: fixed scale weighings	less than 1%	<1%	less than 1%	less than 1%
Percent of commercial vehicles weighed that were overweight: portable scale weighings	45%	48%	45%	45%
Number of commercial vehicle weighings	20,000,000	22,327,679	20,000,000	18,000,000
Number of commercial vehicle safety inspections performed	60,000	117,817	72,000	75,600
Number of portable scale weighings performed	30,000	29,186	31,500	31,500
Lane miles maintained on the State Highway System (Turnpike not included)	40,270	40,650	40,750	40,840
Total budget for intrastate highway construction and arterial highway construction divided by the number of lane miles let to contract	\$20,778,578	\$9,779,956	\$24,307,796	\$18,593,644
Number of motor vehicle fatalities per 100 million miles traveled	less than 1.6	1.3	less than 1.5	<1.5
Percentage of state highway system pavement meeting department standards	80%	88%	80%	80%
Percentage of FDOT-maintained bridges which meet department standards	90%	95%	90%	90%
Percentage increase in number of days required for completed construction contracts over original contract days (less weather days)	less than 20%	4.4%	less than 20%	less than 20%

Performance Measures and Standards LRPP Exhibit II

Department: Transportation Department No.: 55				
Transportation Systems Operations	Code: 55150000			
Approved Performance Measures for FY 2010-11 (Words)	Approved Prior Year Standard FY 2009-10 (Numbers)	Prior Year Actual FY 2009-10 (Numbers)	Approved Standards for FY 2010-11 (Numbers)	Requested FY 2011-12 Standard (Numbers)
Percentage increase in final amount paid for completed construction contracts over original contract amount	less than 10%	5.4%	less than 10%	less than 10%
Number of lane miles let to contract for resurfacing (Turnpike not included)	2,314	3,021	1,734	1,783
Number of lane miles let to contract for highway capacity improvements (Turnpike not included)	91	171	35	52
Percentage of construction contracts planned for letting that were actually let*	95%	99.0%	95%	95%
Number of bridges let to contract for repair (Turnpike not included)	82	129	54	91
Number of bridges let to contract for replacement (Turnpike not included)	15	24	8	17

Executive Direction and Support Services		Code: 55150500		
Approved Performance Measures for FY 2010-11 (Words)	Approved Prior Year Standard FY 2009-10 (Numbers)	Prior Year Actual FY 2009-10 (Numbers)	Approved Standards for FY 2010-11 (Numbers)	Requested FY 2011-12 Standard (Numbers)
Percent of agency administrative and support costs and positions compared to total agency costs and positions	<2% / <12%	1.50% / 11.58%	<2% / <12%	<2% / <12%

Note: Based on a 2006 Office of Inspector General performance measures audit, it was determined that the terms “projects”, “contracts” and “lettings” are used interchangeably in FDOT performance reporting. Number of lane miles let to contract for resurfacing and highway capacity improvements only include actual projects.

Performance Measures and Standards LRPP Exhibit II

Florida's Turnpike Enterprise		Code: 55180100			
Approved Performance Measures for FY 2010-11 (Words)	Approved Prior Year Standard FY 2009-10 (Numbers)	Prior Year Actual FY 2009-10 (Numbers)	Approved Standards for FY 2010-11 (Numbers)	Requested FY 2011-12 Standard (Numbers)	
Operational cost per toll transaction	less than \$0.16	\$0.157	less than \$0.16	less than \$0.16	
Operational cost per dollar collected	less than \$0.19	\$0.175	less than \$0.19	less than \$0.19	
Number of toll transactions	775,100,000	787,571,375	708,885,000	790,600,000	
Number of lane miles let to contract for resurfacing (Turnpike only)	343	51	90	193	
Number of lane miles let to contract for highway capacity improvements (Turnpike only)	24	6	9	0	
Number of bridges let to contract for repair (Turnpike only)	1	2	5	1	
Lane miles maintained on the State Highway System (Turnpike only)	2,061	2,061	2,056	2,113	

Note: Based on a 2006 Office of Inspector General performance measures audit, it was determined that the terms “projects”, “contracts” and “lettings” are used interchangeably in FDOT performance reporting. Number of lane miles let to contract for resurfacing or highway capacity improvements only include actual projects.

Performance Measure Assessment
LRPP Exhibit III

Performance Measure Assessment

LRPP Exhibit III

Department: Transportation
Program: Transportation Systems Development
Service/Budget Entity: Transportation Systems Development
Measure: Number of Right-of-Way parcels acquired (Turnpike not included)
Action:

- | | |
|---|--|
| <input type="checkbox"/> Performance Assessment of <u>Outcome</u> Measure | <input type="checkbox"/> Revision of Measure |
| <input checked="" type="checkbox"/> Performance Assessment of <u>Output</u> Measure | <input type="checkbox"/> Deletion of Measure |
| <input type="checkbox"/> Adjustment of GAA Performance Standards | |

Approved Standard	Actual Performance Results	Difference (Over/Under)	Percentage Difference
791	631	-160	-20.2%

Factors Accounting for the Difference:

Internal Factors (check all that apply):

- | | |
|--|--|
| <input type="checkbox"/> Personnel Factors | <input type="checkbox"/> Staff Capacity |
| <input type="checkbox"/> Competing Priorities | <input type="checkbox"/> Level of Training |
| <input type="checkbox"/> Previous Estimate Incorrect | |
| <input checked="" type="checkbox"/> Other (Identify) | |

Explanation:

External Factors (check all that apply):

- | | |
|--|--|
| <input type="checkbox"/> Resources Unavailable | <input type="checkbox"/> Technological Problems |
| <input type="checkbox"/> Legal/Legislative Change | <input type="checkbox"/> Natural Disaster |
| <input type="checkbox"/> Target Population Change | <input checked="" type="checkbox"/> Other (Identify) |
| <input type="checkbox"/> This Program/Service Cannot Fix The Problem | |
| <input type="checkbox"/> Current Laws Are Working Against The Agency Mission | |

Explanation:

Standards are made well in advance of the targeted year based on scheduled design delivery dates and assumed available funding resources. We anticipate the delays are due to design changes and projects being moved out due to funding shortfalls accounting for the difference between the Standard and Actuals.

Management Efforts to Address Differences/Problems (check all that apply):

- | | |
|------------------------------------|--|
| <input type="checkbox"/> Training | <input type="checkbox"/> Technology |
| <input type="checkbox"/> Personnel | <input checked="" type="checkbox"/> Other (Identify) |

Recommendations:

No recommendations are made at this time.

Performance Measure Assessment

LRPP Exhibit III

Department: Transportation
Program: Transportation Systems Development
Service/Budget Entity: Transportation Systems Development
Measure: Number of projects certified ready for construction (Turnpike not included)
Action:

- | | |
|---|--|
| <input type="checkbox"/> Performance Assessment of <u>Outcome</u> Measure | <input type="checkbox"/> Revision of Measure |
| <input checked="" type="checkbox"/> Performance Assessment of <u>Output</u> Measure | <input type="checkbox"/> Deletion of Measure |
| <input type="checkbox"/> Adjustment of GAA Performance Standards | |

Approved Standard	Actual Performance Results	Difference (Over/Under)	Percentage Difference
791	631	-160	-20.2%

Factors Accounting for the Difference:

Internal Factors (check all that apply):

- | | |
|--|--|
| <input type="checkbox"/> Personnel Factors | <input type="checkbox"/> Staff Capacity |
| <input type="checkbox"/> Competing Priorities | <input type="checkbox"/> Level of Training |
| <input type="checkbox"/> Previous Estimate Incorrect | |
| <input checked="" type="checkbox"/> Other (Identify) | |

Explanation:

External Factors (check all that apply):

- | | |
|--|--|
| <input type="checkbox"/> Resources Unavailable | <input type="checkbox"/> Technological Problems |
| <input type="checkbox"/> Legal/Legislative Change | <input type="checkbox"/> Natural Disaster |
| <input checked="" type="checkbox"/> Target Population Change | <input checked="" type="checkbox"/> Other (Identify) |
| <input type="checkbox"/> This Program/Service Cannot Fix The Problem | |
| <input type="checkbox"/> Current Laws Are Working Against The Agency Mission | |

Explanation:

Standards are made well in advance of the targeted year based on scheduled design delivery dates and assumed available funding resources. We anticipate the delays are due to design changes and projects being moved out due to funding shortfalls accounting for the difference between the Standard and Actuals.

Management Efforts to Address Differences/Problems (check all that apply):

- | | |
|------------------------------------|--|
| <input type="checkbox"/> Training | <input type="checkbox"/> Technology |
| <input type="checkbox"/> Personnel | <input checked="" type="checkbox"/> Other (Identify) |

Recommendations:

No recommendations are made at this time.

Performance Measure Assessment

LRPP Exhibit III

Department: Transportation
Program: Transportation Systems Development
Service/Budget Entity: Transportation Systems Development
Measure: Ratio of transit ridership growth to population growth

Action:

- | | |
|---|--|
| <input type="checkbox"/> Performance Assessment of <u>Outcome</u> Measure | <input type="checkbox"/> Revision of Measure |
| <input checked="" type="checkbox"/> Performance Assessment of <u>Output</u> Measure | <input type="checkbox"/> Deletion of Measure |
| <input type="checkbox"/> Adjustment of GAA Performance Standards | |

Approved Standard	Actual Performance Results	Difference (Over/Under)	Percentage Difference
1.48	Not Valid		

Factors Accounting for the Difference:

Internal Factors (check all that apply):

- | | |
|--|--|
| <input type="checkbox"/> Personnel Factors | <input type="checkbox"/> Staff Capacity |
| <input type="checkbox"/> Competing Priorities | <input type="checkbox"/> Level of Training |
| <input type="checkbox"/> Previous Estimate Incorrect | |
| <input checked="" type="checkbox"/> Other (Identify) | |

Explanation:

This measure is not appropriate for a negative transit ridership growth (numerator) and a negative population growth (denominator). In FY2009/10 the estimated transit ridership growth rate was -5.17%. Florida's estimated population growth was -0.3%. Both, numerator and denominator, were negative leading to an invalid statistical ratio.

External Factors (check all that apply):

- | | |
|--|--|
| <input type="checkbox"/> Resources Unavailable | <input type="checkbox"/> Technological Problems |
| <input type="checkbox"/> Legal/Legislative Change | <input type="checkbox"/> Natural Disaster |
| <input type="checkbox"/> Target Population Change | <input checked="" type="checkbox"/> Other (Identify) |
| <input type="checkbox"/> This Program/Service Cannot Fix The Problem | |
| <input type="checkbox"/> Current Laws Are Working Against The Agency Mission | |

Explanation:

Florida Bureau of Economic and Business Research (BEBR) has estimated, for the first time in recent Florida history that Florida's population decreased. Additionally, the economic challenges have adversely affected ridership as a high percentage of transit trips are work trips. These factors bring to light a [new] potential weakness in the validity of this performance measure.

Management Efforts to Address Differences/Problems (check all that apply):

- | | |
|------------------------------------|--|
| <input type="checkbox"/> Training | <input type="checkbox"/> Technology |
| <input type="checkbox"/> Personnel | <input checked="" type="checkbox"/> Other (Identify) |

Recommendations:

It is recommended this ratio be evaluated for validity and appropriateness to determine if another measure can be developed to better track transit ridership.

Performance Measure Assessment

LRPP Exhibit III

Department: Transportation
Program: Transportation Systems Development
Service/Budget Entity: Transportation Systems Development
Measure: Number of passenger enplanements

Action:

- | | |
|---|--|
| <input type="checkbox"/> Performance Assessment of <u>Outcome</u> Measure | <input type="checkbox"/> Revision of Measure |
| <input checked="" type="checkbox"/> Performance Assessment of <u>Output</u> Measure | <input type="checkbox"/> Deletion of Measure |
| <input type="checkbox"/> Adjustment of GAA Performance Standards | |

Approved Standard	Actual Performance Results	Difference (Over/Under)	Percentage Difference
70,000,000	67,003,534	-2,996,466	-4.28%

Factors Accounting for the Difference:

Internal Factors (check all that apply):

- | | |
|--|--|
| <input type="checkbox"/> Personnel Factors | <input type="checkbox"/> Staff Capacity |
| <input type="checkbox"/> Competing Priorities | <input type="checkbox"/> Level of Training |
| <input type="checkbox"/> Previous Estimate Incorrect | |
| <input checked="" type="checkbox"/> Other (Identify) | |

Explanation:

External Factors (check all that apply):

- | | |
|--|--|
| <input type="checkbox"/> Resources Unavailable | <input type="checkbox"/> Technological Problems |
| <input type="checkbox"/> Legal/Legislative Change | <input type="checkbox"/> Natural Disaster |
| <input type="checkbox"/> Target Population Change | <input checked="" type="checkbox"/> Other (Identify) |
| <input type="checkbox"/> This Program/Service Cannot Fix The Problem | |
| <input type="checkbox"/> Current Laws Are Working Against The Agency Mission | |

Explanation:

It appears that passenger enplanements in Florida's commercial service airports are a reflection of the economy. The decline in 2010 monthly passenger traffic in Florida's commercial service airports are directly related to the current economic downturn.

Management Efforts to Address Differences/Problems (check all that apply):

- | | |
|------------------------------------|--|
| <input type="checkbox"/> Training | <input type="checkbox"/> Technology |
| <input type="checkbox"/> Personnel | <input checked="" type="checkbox"/> Other (Identify) |

Recommendations:

No recommendations are made at this time.

Performance Measure Assessment

LRPP Exhibit III

Department: Transportation
Program: Transportation Systems Development
Service/Budget Entity: Transportation Systems Development
Measure: Number of cruise passenger embarkments and disembarkments at Florida ports

Action:

- | | |
|---|--|
| <input type="checkbox"/> Performance Assessment of <u>Outcome</u> Measure | <input type="checkbox"/> Revision of Measure |
| <input checked="" type="checkbox"/> Performance Assessment of <u>Output</u> Measure | <input type="checkbox"/> Deletion of Measure |
| <input type="checkbox"/> Adjustment of GAA Performance Standards | |

Approved Standard	Actual Performance Results	Difference (Over/Under)	Percentage Difference
15,000,000	12,702,633	-2,297,367	-15.3%

Factors Accounting for the Difference:

Internal Factors (check all that apply):

- | | |
|--|--|
| <input type="checkbox"/> Personnel Factors | <input type="checkbox"/> Staff Capacity |
| <input type="checkbox"/> Competing Priorities | <input type="checkbox"/> Level of Training |
| <input type="checkbox"/> Previous Estimate Incorrect | |
| <input checked="" type="checkbox"/> Other (Identify) | |

Explanation:

External Factors (check all that apply):

- | | |
|--|--|
| <input type="checkbox"/> Resources Unavailable | <input type="checkbox"/> Technological Problems |
| <input type="checkbox"/> Legal/Legislative Change | <input type="checkbox"/> Natural Disaster |
| <input type="checkbox"/> Target Population Change | <input checked="" type="checkbox"/> Other (Identify) |
| <input type="checkbox"/> This Program/Service Cannot Fix The Problem | |
| <input type="checkbox"/> Current Laws Are Working Against The Agency Mission | |

Explanation:

It appears that cruise passenger embarkments and disembarkments at Florida ports are a reflection of the economy. The decline in 2010 monthly cruise passengers in Florida's ports is directly related to the current economic downturn.

Management Efforts to Address Differences/Problems (check all that apply):

- | | |
|------------------------------------|--|
| <input type="checkbox"/> Training | <input type="checkbox"/> Technology |
| <input type="checkbox"/> Personnel | <input checked="" type="checkbox"/> Other (Identify) |

Recommendations:

No recommendations are made at this time.

Performance Measure Assessment

LRPP Exhibit III

Department: Transportation
Program: Transportation Systems Operations
Service/Budget Entity: Transportation Systems Operations
Measure: Number of portable scale weighings performed

Action:

- | | |
|---|--|
| <input type="checkbox"/> Performance Assessment of <u>Outcome</u> Measure | <input type="checkbox"/> Revision of Measure |
| <input checked="" type="checkbox"/> Performance Assessment of <u>Output</u> Measure | <input type="checkbox"/> Deletion of Measure |
| <input type="checkbox"/> Adjustment of GAA Performance Standards | |

Approved Standard	Actual Performance Results	Difference (Over/Under)	Percentage Difference
30,000	29,186	-814	-2.7%

Factors Accounting for the Difference:

Internal Factors (check all that apply):

- | | |
|--|--|
| <input type="checkbox"/> Personnel Factors | <input type="checkbox"/> Staff Capacity |
| <input type="checkbox"/> Competing Priorities | <input type="checkbox"/> Level of Training |
| <input type="checkbox"/> Previous Estimate Incorrect | |
| <input checked="" type="checkbox"/> Other (Identify) | |

Explanation:

The department has set an aggressive portable weighings standard. Over the past few years, the Office of Motor Carrier Compliance (OMCC) has had an average close to 30,000, which has included state overtime. This year the state overtime for law enforcement officers was reduced, therefore, OMCC's weighings were slightly short of this standard. We have placed an emphasis early on in this current fiscal year to increase OMCC's portable scale weighings with local enforcement details.

External Factors (check all that apply):

- | | |
|--|---|
| <input type="checkbox"/> Resources Unavailable | <input type="checkbox"/> Technological Problems |
| <input type="checkbox"/> Legal/Legislative Change | <input type="checkbox"/> Natural Disaster |
| <input type="checkbox"/> Target Population Change | <input type="checkbox"/> Other (Identify) |
| <input type="checkbox"/> This Program/Service Cannot Fix The Problem | |
| <input type="checkbox"/> Current Laws Are Working Against The Agency Mission | |

Explanation:

Management Efforts to Address Differences/Problems (check all that apply):

- | | |
|------------------------------------|--|
| <input type="checkbox"/> Training | <input type="checkbox"/> Technology |
| <input type="checkbox"/> Personnel | <input checked="" type="checkbox"/> Other (Identify) |

Recommendations:

No recommendations are made at this time.

Performance Measure Assessment

LRPP Exhibit III

Department: Transportation
Program: Transportation System Operations
Service/Budget Entity: Highway Operations
Measure: Number of lane miles let to contract for resurfacing (Turnpike Only)

Action:

- | | |
|---|--|
| <input type="checkbox"/> Performance Assessment of <u>Outcome</u> Measure | <input type="checkbox"/> Revision of Measure |
| <input checked="" type="checkbox"/> Performance Assessment of <u>Output</u> Measure | <input type="checkbox"/> Deletion of Measure |
| <input type="checkbox"/> Adjustment of GAA Performance Standards | |

Approved Standard	Actual Performance Results	Difference (Over/Under)	Percentage Difference
343	51	-292	-85.1%

Factors Accounting for the Difference:

Internal Factors (check all that apply):

- | | |
|--|--|
| <input type="checkbox"/> Personnel Factors | <input type="checkbox"/> Staff Capacity |
| <input type="checkbox"/> Competing Priorities | <input type="checkbox"/> Level of Training |
| <input type="checkbox"/> Previous Estimate Incorrect | |
| <input checked="" type="checkbox"/> Other (Identify) | |

Explanation:

Some 343 lane miles were originally planned to be resurfaced based on prior year projections. However, as FY 2009/10 approached and based on more recent pavement condition data, it's been determined that a need existed to resurface 51 lane miles.

External Factors (check all that apply):

- | | |
|--|--|
| <input type="checkbox"/> Resources Unavailable | <input type="checkbox"/> Technological Problems |
| <input type="checkbox"/> Legal/Legislative Change | <input type="checkbox"/> Natural Disaster |
| <input type="checkbox"/> Target Population Change | <input checked="" type="checkbox"/> Other (Identify) |
| <input type="checkbox"/> This Program/Service Cannot Fix The Problem | |
| <input type="checkbox"/> Current Laws Are Working Against The Agency Mission | |

Explanation:

No external factors apply to this reporting change.

- | | |
|------------------------------------|--|
| <input type="checkbox"/> Training | <input type="checkbox"/> Technology |
| <input type="checkbox"/> Personnel | <input checked="" type="checkbox"/> Other (Identify) |

Recommendations:

No recommendations at this time.

Performance Measure Assessment

LRPP Exhibit III

Department: Transportation
Program: Florida's Turnpike Enterprise
Service/Budget Entity: Florida's Turnpike Enterprise
Measure: Number of lane miles let to contract for highway capacity improvements
(Turnpike Only)

Action:

- | | |
|---|--|
| <input type="checkbox"/> Performance Assessment of <u>Outcome</u> Measure | <input type="checkbox"/> Revision of Measure |
| <input checked="" type="checkbox"/> Performance Assessment of <u>Output</u> Measure | <input type="checkbox"/> Deletion of Measure |
| <input type="checkbox"/> Adjustment of GAA Performance Standards | |

Approved Standard	Actual Performance Results	Difference (Over/Under)	Percentage Difference
24	6	-18	-75%

Factors Accounting for the Difference:

Internal Factors (check all that apply):

- | | |
|--|--|
| <input type="checkbox"/> Personnel Factors | <input type="checkbox"/> Staff Capacity |
| <input type="checkbox"/> Competing Priorities | <input type="checkbox"/> Level of Training |
| <input type="checkbox"/> Previous Estimate Incorrect | |
| <input checked="" type="checkbox"/> Other (Identify) | |

Explanation:

One project was moved out of the program due to financing issues.

External Factors (check all that apply):

- | | |
|--|--|
| <input type="checkbox"/> Resources Unavailable | <input type="checkbox"/> Technological Problems |
| <input type="checkbox"/> Legal/Legislative Change | <input type="checkbox"/> Natural Disaster |
| <input type="checkbox"/> Target Population Change | <input checked="" type="checkbox"/> Other (Identify) |
| <input type="checkbox"/> This Program/Service Cannot Fix The Problem | |
| <input type="checkbox"/> Current Laws Are Working Against The Agency Mission | |

Explanation:

Management Efforts to Address Differences/Problems (check all that apply):

- | | |
|------------------------------------|--|
| <input type="checkbox"/> Training | <input type="checkbox"/> Technology |
| <input type="checkbox"/> Personnel | <input checked="" type="checkbox"/> Other (Identify) |

Recommendations:

No recommendations at this time

Performance Measure Validity and Reliability
Exhibit IV

Performance Validity and Reliability

Exhibit IV

Agency: Florida Department of Transportation

Program: Public Transportation

Service: Public Transportation

Measure: Ratio of transit ridership growth to population growth.

Action:

- Requesting revision to approved performance measure.
- Change in data sources or measurement methodologies.
- Requesting new measure.
- Backup for performance measure.

Data Sources And Methodology: Public Transportation Office, Florida Department of Transportation. Population data is from the Florida Legislature's Office of Economic and Demographic Research, the U.S. Census Bureau and the Bureau of Economic and Business Research (BEBR) at the University of Florida. Population data used to calculate the requested standards are from the Office of Economic and Demographic Research projections.

Local transit agencies collect ridership data. Data for this measure is extracted from reports required by the Federal Transit Administration.

It is important to note that there is about a 15 to 17 month lag in the data. That is, the actual transit ridership data for the federal fiscal year which just ended is not available until December of the next year. Population data for the calendar year which just ended is not available until the following February.

Validity: One of the major transportation development concerns is responding to the need for transportation systems to support the state's growing population. A comparison of the transit ridership growth to the growth rate of the population as a

Performance Validity and Reliability

Exhibit IV

whole is a logical way to address this concept. It will demonstrate whether the use of public transit is keeping up with or exceeding population growth.

Reliability: The population data for prior years is an estimate that decreases in reliability as time passes since the last decennial census. Projections for future years are similarly degraded by the passage of time and are generally less reliable than estimates.

The ridership data is validated by the federal government.

Performance Validity and Reliability

Exhibit IV

Agency: Florida Department of Transportation

Program: Public Transportation

Service: Public Transportation

Measure: Number of one-way public transit passenger trips.

Action:

- Requesting revision to approved performance measure.
- Change in data sources or measurement methodologies.
- Requesting new measure.
- Backup for performance measure.

Data Sources And Methodology: Public Transportation Office, Florida Department of Transportation. Local transit agencies collect ridership data. Data for this measure is extracted from reports required by the Federal Transit Administration.

It is important to note that there is a 12 month lag in the data. That is, the actual data for the calendar year which just ended is not available until December.

Validity: Transit ridership is a common measure of transit performance, but it may not measure the department's performance. The department acts as a partner in the provision of transit service, but does not operate transit systems.

Reliability: While we have no reason to question the reliability of the measure, source documentation or standards, we were not able to verify data outside the control of FDOT. The data are subject to a lag time for audited reports of up to three years. The data is validated by the federal government.

Performance Validity and Reliability

Exhibit IV

Agency: Florida Department of Transportation

Program: Public Transportation

Service: Public Transportation

Measure: Number of one-way trips provided (transportation disadvantaged).

Action:

- Requesting revision to approved performance measure.
- Change in data sources or measurement methodologies.
- Requesting new measure.
- Backup for performance measure.

Data Sources And Methodology: Commission for the Transportation Disadvantaged. Each county in Florida has a Community Transportation Coordinator (CTC) that is required to submit an Annual Operating Report to the Commission by September 15 each year. Each CTC Report includes information related to the number of trips provided for the transportation disadvantaged in their service area.

Each CTC logs the number of trips provided according to the following categories: fixed route, ambulatory, non-ambulatory, stretcher, and school bus. This measure includes only those requested trips provided with funds from the Transportation Disadvantaged Trust Fund.

It is important to note that there is a 5 – 6 month lag in the data. That is, the actual data for the fiscal year which just ended is not available until December or January.

Validity: The measure is a valid indicator of the number of trips provided for the transportation disadvantaged. However, it is important to note that the department is only one of a variety of entities which provide funding to the Community Transportation

Performance Validity and Reliability

Exhibit IV

Coordinators who provide transportation services for the transportation disadvantaged in their area.

Reliability: The commission has a system of checks and balances to ensure the financial information reported by the CTCs is accurate and reliable.

Performance Validity and Reliability

Exhibit IV

Agency: Florida Department of Transportation

Program: Public Transportation

Service: Public Transportation

Measure: Number of passenger enplanements.

Action:

- Requesting revision to approved performance measure.
- Change in data sources or measurement methodologies.
- Requesting new measure.
- Backup for performance measure.

Data Sources And Methodology: Public Transportation Office, Florida Department of Transportation. department estimates are based on actual historical data from the Federal Aviation Administration, U.S. Department of Transportation.

It is important to note that there is a 21 month lag in the data. That is, the actual data for the calendar year 2002 will not be available until the Fall of 2004.

Validity: We have no reason to question the validity of the measure, source documentation or standards.

It is important to note that the work done by the Department of Transportation has very little, if any, impact on the number of passenger enplanements. As a result, it is not a valid measure of the Public Transportation Program.

Reliability: We have no reason to question the reliability of the measure, source documentation or standards.

Performance Validity and Reliability

Exhibit IV

Agency: Florida Department of Transportation

Program: Public Transportation

Service: Public Transportation

Measure: Number of cruise embarkations and disembarkations at Florida ports.

Action:

- Requesting revision to approved performance measure.
- Change in data sources or measurement methodologies.
- Requesting new measure.
- Backup for performance measure.

Data Sources And Methodology: Public Transportation Office, Florida Department of Transportation. The data is obtained from the annual Florida Seaport Mission Plan published by the Florida Seaport Transportation and Economic Development Council and the individual seaports located in Florida.

It is important to note that there is a five to six month lag in the data. That is, the actual data for the fiscal year which just ended is not available until January 2004.

Validity: We have no reason to question the validity of the measure, source documentation or standards, but we were not able to verify data outside the control of the Florida Department of Transportation.

It is important to note that this measure is not within the control of the department. As a result, it is not a valid measure of the Public Transportation Program.

Performance Validity and Reliability

Exhibit IV

Reliability: We have no reason to question the reliability of the measure, source documentation or standards, but we were not able to verify data outside the control of the Florida Department of Transportation.

Performance Validity and Reliability

Exhibit IV

Agency: Florida Department of Transportation

Program: Public Transportation

Service: Public Transportation

Measure: Average cost per requested one-way trip for transportation disadvantaged.

Action:

- Requesting revision to approved performance measure.
- Change in data sources or measurement methodologies.
- Requesting new measure.
- Backup for performance measure.

Data Sources And Methodology: Commission for the Transportation Disadvantaged. Each county in Florida has a Community Transportation Coordinator (CTC) that is required to submit an Annual Operating Report to the Commission by September 15 each year. The Annual Operating Report includes information related to the costs incurred and the number of trips provided by the CTC and its contractors in providing trips for the transportation disadvantaged. Each CTC logs the number of trips provided according to the following categories: fixed route, ambulatory, non-ambulatory, stretcher, and school bus. Requested trips include all categories mentioned above except for fixed route.

The measure is the total costs incurred by CTCs and coordination contractors in providing requested trips for the transportation disadvantaged in their area divided by the number of requested trips provided. This measure does not include administrative costs associated with the Commission for the Transportation Disadvantaged. It is important to note that Community Transportation Coordinators receive funding from various entities, examples include: US Department of Transportation; Department of Children and Families; Agency for Health Care Administration; Department of Elder Affairs; Department of Education; etc.

Performance Validity and Reliability

Exhibit IV

The Commission for the Transportation Disadvantaged compiles the information included in each Annual Operating Report into their Annual Performance Report.

It is important to note that there is a 5 – 6 month lag in the data. That is, the actual data for the fiscal year which just ended is not available until December or January.

Validity: The measure is a valid measure of the average cost per paratransit trip.

Reliability: The Commission has a system of checks and balances to ensure the financial information reported by the CTCs is accurate and reliable.

Performance Validity and Reliability

Exhibit IV

Department: Florida Department of Transportation

Program: Highway/Bridge Construction

Service/Budget Entity: Highway/Bridge Construction

Measure: Total budget for intrastate highway construction and arterial highway construction divided by the number of lane miles let to contract.

Action:

- Requesting revision to approved performance measure.
- Change in data sources or measurement methodologies.
- Requesting new measure.
- Backup for performance measure.

Data Sources And Methodology: Office of Financial Development, Florida Department of Transportation. This measure is the total budget for Intrastate Highway Construction and Arterial Highway Construction divided by the number of lane miles let to contract. The budget figures are obtained from the Program & Resource Plan. The number of lane miles let to contract is obtained from the Program Objectives & Accomplishments Report (PO&A). Actual prior year and projected future year data is obtained from the July Adopted Work Program.

Validity: This measure does not provide a true indication of the department's average construction cost. Funds are included in the total budget portion which do not add lane miles. Examples of work funded out of this category which do not add lane miles include but are not limited to: interchanges, intersections, lanes reconstructed, landscaping, drainage improvements, rest areas, overhead signing, etc. In addition, the size and complexity of projects are just two factors which have a great effect on the actual cost of a particular project. As a result, the figures reported may vary significantly from year to year.

Reliability: The measure is reliable in that the measuring procedure, obtaining data from the PO&A, will yield the same results on repeated trials.

Performance Validity and Reliability

Exhibit IV

Agency: Florida Department of Transportation

Program: Highway/Bridge Construction

Service: Highway/Bridge Construction

Measure: Intrastate highway lane miles contracted for highway capacity improvements (Turnpike not included).

Action:

- Requesting revision to approved performance measure.
- Change in data sources or measurement methodologies.
- Requesting new measure.
- Backup for performance measure.

Data Sources And Methodology: Office of Financial Development, Florida Department of Transportation. Data obtained from the Program Objectives and Accomplishments Report. Actual prior year and projected future year data from the July Adopted Work Program.

For the purposes of this report, the term “contracted” refers to the moment the contract is “let” or “committed.”

Validity: The measure is valid with regard to the number of intrastate highway lane miles (excluding the Turnpike) to be constructed to increase highway capacity.

The Work Program Administration (WPA) system contains the projects and schedules for capacity improvements. The WPA system also provides other project information and costs. Districts select capacity improvement projects based on 1) local government priority and 2) department-determined needs.

Performance Validity and Reliability

Exhibit IV

Procedures are documented for maintaining the Adopted Work Program, developing the work program, amending the work program and work program Instructions for programming and coding information correctly for inclusion in the work program. Source documents are authorized and projects in the work program are subjected to extensive review. Only work program development staff in the Districts and Central Office with valid user IDs and passwords have access to input or change data in WPA. A review committee and Office of Work Program staff validate the data entered into the system. Automated measures are in place to detect errors and provide a trail of activity in the systems. Data output is also reviewed and exceptions are reported.

Reliability: The information is reliable and consistent due to the controls discussed above that are in place and its use in the Program Objectives and Accomplishments Report and the Transportation Commission's Performance and Production Review.

Performance Validity and Reliability

Exhibit IV

Agency: Florida Department of Transportation

Program: Highway/Bridge Construction

Service: Highway/Bridge Construction

Measure: Arterial highway lane miles contracted for highway capacity improvements.

Action:

- Requesting revision to approved performance measure.
- Change in data sources or measurement methodologies.
- Requesting new measure.
- Backup for performance measure.

Data Sources And Methodology: Office of Financial Development, Florida Department of Transportation. Data obtained from the Program Objectives and Accomplishments Report. Actual prior year and projected future year data from the July Adopted Work Program.

For the purposes of this report, the term “contracted” refers to the moment the contract is “let” or “committed.”

Validity: The measure is valid with regard to the number of arterial highway lane miles to be constructed to increase highway capacity.

The Work Program Administration (WPA) system contains the projects and schedules for capacity improvements. The WPA system also provides other project information and costs. Districts select capacity improvement projects based on 1) local government priority, and 2) department-determined needs.

Performance Validity and Reliability

Exhibit IV

Procedures are documented for maintaining the adopted work program, developing the work program, amending the work program and work program instructions for programming and coding information correctly for inclusion in the work program. Source documents are authorized and projects in the work program are subjected to extensive review. Only work program development staff in the Districts and Central Office with valid user IDs and passwords have access to input or change data in WPA. A review committee and Office of Work Program staff validate the data entered into the system. Automated measures are in place to detect errors and provide a trail of activity in the systems. Data output is also reviewed and exceptions are reported.

Reliability: The information is reliable and consistent due to the controls discussed above that are in place and its use in the Program Objectives and Accomplishments Report and the Transportation Commission's Performance and Production Review.

Performance Validity and Reliability

Exhibit IV

Agency: Florida Department of Transportation

Program: Highway/Bridge Construction

Service: Highway/Bridge Construction

Measure: Lane miles contracted for resurfacing (Turnpike not included).

Action:

- Requesting revision to approved performance measure.
- Change in data sources or measurement methodologies.
- Requesting new measure.
- Backup for performance measure.

Data Sources And Methodology: Office of Financial Development, Florida Department of Transportation. Data obtained from the Program Objectives and Accomplishments Report. Includes lane miles let to contract which are off the State Highway System. Actual prior year and projected future year data from the July 1 Adopted Work Program.

For the purposes of this report, the term “contracted” refers to the moment the contract is “let” or “committed.”

Validity: The measure is valid with regard to the number of lane miles let to contract for resurfacing (excluding the Turnpike).

The Pavement Condition Survey (PCS), Roadway Characteristics Inventory (RCI) system, and Pavement Management Reporting System (PAVMARS) contain information related to pavement condition and characteristics. They are used to develop projects which are entered into the Work Program Administration (WPA) system. The WPA system contains the projects and schedules for the Resurfacing Program. The WPA also includes other project information and costs. The Districts prioritize resurfacing projects for inclusion in the work program from Pavement Condition Survey reports which identify deficient pavement segments.

Performance Validity and Reliability

Exhibit IV

Procedures are documented for maintaining the Adopted Work Program, developing the work program, and amending the work program and work program instructions for collecting the appropriate information for inclusion in the work program. There are also user manuals for the systems used to collect the data for these measures. Source documents are authorized and projects in the work program are subjected to extensive review. Only work program development staff in the Districts and Central Office with valid user IDs and passwords have access to input or change data in WPA. A review committee, district and Office of Work Program staff validate the data entered into the system. Automated measures are in place to detect errors and provide a trail of activity in the systems. Data output is also reviewed and exceptions are reported.

Reliability: The information is reliable and consistent due to the controls discussed above that are in place and its use in the Program Objectives and Accomplishments Report and in the Transportation Commission's Performance and Production Review.

Performance Validity and Reliability

Exhibit IV

Agency: Florida Department of Transportation

Program: Highway/Bridge Construction

Service: Highway/Bridge Construction

Measure: Bridges contracted for repair or replacement (Turnpike not included).

Action:

- Requesting revision to approved performance measure.
- Change in data sources or measurement methodologies.
- Requesting new measure.
- Backup for performance measure.

Data Sources And Methodology: Office of Financial Development, Florida Department of Transportation. Data obtained from the Program Objectives and Accomplishments Report. The figure includes local bridges as well as those on the State Highway System. Actual prior year and projected future year data from the July 1 Adopted Work Program.

For the purposes of this report, the term “contracted” refers to the moment the contract is “let” or “committed.”

Validity: The measure is valid as an indicator of agency use of contracts for bridge repair and replacement (excluding bridges repaired or replaced on the Turnpike). It should be noted that the size, complexity, and cost of bridge replacement projects vary widely. Thus, this measure is not valid as a direct workload indicator for workload or budget needs.

The number of bridges let to contract for repair or replacement is compiled from the FDOT Work Program Administration computer system, which is the department’s

Performance Validity and Reliability

Exhibit IV

source of commitment and financial information for projects undertaken by the department. The measure refers to both a) the number of bridges (excluding Turnpike bridges) that are committed to construction contract for either repair or rehabilitation work to correct structural deterioration related problems, and b) the number of bridges (excluding Turnpike bridges) let to contract for replacement which includes bridges that are structurally deficient, posted for weight restriction, or are more economical to replace than they are to repair or rehabilitate.

Reliability: The measure is reliable and consistent due to the elaborate review process employed in developing the work program.

Performance Validity and Reliability

Exhibit IV

Agency: Florida Department of Transportation

Program: Highway/Bridge Construction

Service: Highway/Bridge Construction

Measure: Right-of-way parcels acquired (Turnpike not included).

Action:

- Requesting revision to approved performance measure.
- Change in data sources or measurement methodologies.
- Requesting new measure.
- Backup for performance measure.

Data Sources And Methodology: Right-of-Way Office, Florida Department of Transportation. Data is obtained from the Right-of-Way Management System (RWMS).

It is important to note that the standard used for FY 2009/10 is developed from the second year of a two-year projection developed at the beginning of FY 2008/09. Because the projection is well in advance of the time when detailed project information is available, it is subject to change. This change is noticeable in the difference between these standards and the plan published by the Transportation Commission that is completed immediately prior to publication. The projection for parcels to be acquired in the second year is based on estimates of right of way needs. Typically, at the time the department is making the projection for the second year, the associated construction projects are in the fourth or fifth year of the work program. The projects are still in the preliminary engineering phase and design work has not yet or has just recently been started. Right of way requirements have not yet been set, title work has not been completed, and right of way maps including the designation of parcels have not been prepared. As design work progresses, right of way requirements are better defined and better estimates of the number of parcels necessary for each project can be made. Additionally, since the associated construction projects are in the outer years of the work program, the schedules frequently change due to local government input or funding constraints. This impacts the schedule for the right of way segment of these projects. The department anticipates requesting an update to the standard immediately prior to the beginning of FY 2009/10 when better information is available and the standard can be made more meaningful.

Performance Validity and Reliability

Exhibit IV

Validity: The measure is valid as an indicator of the total number of right-of-way parcels acquired (excluding Turnpike projects) but not of the amount of effort or funding needed to acquire them. Other data are needed to evaluate the number of actual acquisitions compared to the number needed to let projects on time.

Since no construction contract is let, with the exception of design-build contracts, until all right-of-way parcels needed for the project are acquired and certified as “clear” (ready for construction to proceed), an efficient and economically effective right-of-way program is an essential component of productivity. On design-build contracts, the right of way necessary for construction of the project or any portion thereof, must be certified as “clear” prior to the start of construction activities.

In the usual production cycle of a road or bridge, the necessary right-of-way is acquired immediately prior to the start of construction. When feasible, the department acquires needed right-of-way farther in advance of construction - purchasing now, rather than later when value has appreciated, land that will be needed for planned future roads or for widening existing roads.

Reliability: Based on the importance of this information, there are extensive reviews by Central Office and District staff of the monthly results published in the Production Management Report. These reviews ensure the reliability of the data.

Performance Validity and Reliability

Exhibit IV

Agency: Florida Department of Transportation

Program: Highway/Bridge Construction

Service: Highway/Bridge Construction

Measure: Number of motor vehicle fatalities per 100 million miles traveled.

Action:

- Requesting revision to approved performance measure.
- Change in data sources or measurement methodologies.
- Requesting new measure.
- Backup for performance measure.

Data Sources And Methodology: Safety Office, Florida Department of Transportation (FDOT). The annual traffic facts book, "Traffic Crash Facts," from the Florida Department of Highway Safety and Motor Vehicles provides the data. There is a 10 - 11 month lag in when this information is available as this report is published annually by a third party in the summer following the calendar year covered. The relevant data element in that document is derived from two sources: 1) long-form crash reports submitted by local and state law enforcement agencies and 2) an estimate for total highway travel by vehicles submitted by FDOT.

Local and state law enforcement agencies supply copies of relevant crash reports to the department of Highway Safety and Motor Vehicles year-round. Relevant crashes include only those more severe crashes which, by law, must be reported using the so-called long form. A long-form report must be filed when a motor vehicle crash: (1) resulted in death or personal injury; or (2) involved one or more of the following conditions; (a) leaving the scene of a crash involving damage to an occupied vehicle or property, or (b) driving while under the influence of alcoholic beverages, chemical substances, or controlled substances, or with an unlawful blood alcohol level. Other crashes may be reported using a long-form. For 1998 data and prior, a highway crash fatality, under state rules, must be the direct result of a motor vehicle crash and occur within 90 days of the crash. Federal rules establish a 30-day time period for crash-related deaths, so federal reports normally show a slightly smaller number of fatalities. The state recently modified its definition of what constitutes a highway crash fatality to

Performance Validity and Reliability

Exhibit IV

make it consistent with the federal definition. Beginning with 1999 data, a highway crash fatality must be the direct result of a motor vehicle crash and occur within 30 days of the crash.

The number of fatalities alone is not a good measure as it fails to take into account the role of exposure. The nationally recognized way to compensate for exposure, or the level of risk, is to report the number of fatalities in reference to the amount of travel. To produce a number that is convenient to use, the fatality measure is reported as the number of fatalities per 100 million miles of travel. It is the rate, not the number, of fatalities being examined by this measure. The required normative denominator is vehicle miles of travel (VMT).

Daily VMT (DVMT) is the product of multiplying the length of a highway segment by the annual average daily traffic (AADT) estimate for the segment. AADT is the estimate for total annual traffic divided by 365 and may not be an actual volume observable on any day. For example, it could be the average of busy weekdays and low volume weekend days in a central business district, or an opposite pattern near a beach resort. AADT is a point estimate; i.e., it is estimated for a given place on the road based on traffic counts taken at the point, with some adjustments. The highway segment for which the AADT estimate is applicable is determined according to perceived homogeneous traffic conditions. The statewide annual VMT estimate is the sum of all highway segment DVMT estimates multiplied by 365.

In most cases, the process of making an AADT estimate begins when one- and two-day traffic counts are taken once a year. The location of these counts is held fairly constant from year to year. The raw traffic count must be adjusted to derive an AADT estimate.

For the State Highway System, the agency uses an AADT estimating method endorsed by the Federal Highway Administration and covered by an American Society for Testing and Materials standard. For the State Highway System, each distinct highway segment must have one traffic counting location which is monitored for two days at least once every three years. District staffs determine homogeneous highway segments and counting locations following established guidelines. Years in which a traffic count is not taken at a given location have AADT estimated based on changes in traffic along adjacent highway segments. Most Districts count every site every year in order to fully address any local travel changes. Since the statistical variance at almost all sites is greater than the average annual change in traffic, one-year changes in AADT estimates are usually not statistically significant.

Performance Validity and Reliability

Exhibit IV

Each point in the AADT estimating process adds an amount of uncertainty to the final result. The national standard is to have 90% of AADT estimates within 10% of their true value. The agency checks to see if the standard is met by taking sample counts and producing AADT estimates at sites which are continuously monitored to see if the same result is derived. The agency has consistently met the standard for the State Highway System. At worst, then, the VMT-based fatality rate for the State Highway System is off no more than 10%. Of course, the selected performance measure is not limited to the State Highway System; it includes all roads in the state. State roads comprise about 10% of the public roads in the state. VMT estimates for roads off the state system are not developed with the same level of statistical sophistication. The statistical accuracy of AADT estimates for higher classification roads under local jurisdiction is not as good as those on the State Highway System, but overall still meets established accuracy standards. AADT estimates for lower classification roads under local jurisdiction are estimated using functional classification guidelines.

It is also important to note that while the State Highway System comprises a little more than 10% of the total public road mileage in the state, it carries approximately 2/3 of the traffic.

Validity: The department is responsible for designing, constructing and maintaining more than 12,000 miles of state roads. Approximately 103,000 miles of road are the responsibility of cities and counties and about 2,000 miles are the responsibility of various federal agencies. Outside the State Highway System, the department provides only leadership and financial assistance, not actual performance of safety activities. Nevertheless, a comprehensive measure of highway safety is important in defining where agency efforts should be applied.

The overall objective of the State Highway System is to move people and goods safely within the state. This outcome measure is a direct monitor of how safely the highway system meets that objective. It is also an ultimate outcome measure for the net impact of keeping the roads and bridges on the State Highway System in good condition. The measure goes beyond agency responsibilities to cover all public roads and is thus an effective tool for monitoring needs throughout the entire roadway network.

Reliability: The number of persons killed in motor vehicle crashes is highly reliable given the thoroughness of law enforcement investigations. However, the number of fatalities alone is not a good measure as it fails to take into account the role of exposure. The nationally recognized way to compensate for exposure, or the level of

Performance Validity and Reliability

Exhibit IV

risk, is to report the number of fatalities in reference to the amount of travel. To produce a number that is convenient to use, the measure is reported as the number of fatalities per 100 million vehicle miles of travel (VMT).

Even though there are shortcomings in the VMT estimates, the fatality rate performance measure is reliable. To the extent that the problem of VMT estimation is historical and is expected to extend into the foreseeable future, it is relatively constant and does not detract from the ability of this performance measure to indicate state trends.

It is important to note that the method of calculating VMT on public roads that are not on the State Highway System has been improved. The result was a larger off-system VMT (and lower fatality rate) than would be expected from historical trends.

An independent variable to use as a "reality check" is the number of fatalities and the number of fatal crashes. Since all states use the same methodology, VMT estimation issues are not considered significant when making state-to-state comparisons, which is another form of quality checks.

Performance Validity and Reliability

Exhibit IV

Agency: Florida Department of Transportation

Program: Highway/Bridge Construction

Service: Highway/Bridge Construction

Measure: Percent of state highway system pavement meeting department standards.

Action:

- Requesting revision to approved performance measure.
- Change in data sources or measurement methodologies.
- Requesting new measure.
- Backup for performance measure.

Data Sources And Methodology: Office of Financial Development, Florida Department of Transportation, using reports prepared by the Pavement Maintenance Section of the latest annual Pavement Condition Survey (PCS). The State Materials Office (SMO) in Gainesville collects the PCS data. The condition of Florida pavements is measured annually through the Pavement Condition Survey conducted by the Pavement Evaluation Section of the SMO. Pavements are rated on a scale of 0 to 10 (with 10 being the best) in each of three categories: ride smoothness, pavement cracking, and wheel path rutting.

The condition rating scales were set by a statewide committee of pavement engineers so that a rating of six or less in any of the three rating categories would constitute a deficient pavement segment. The lone exception to this is that, with a posted speed limit of 45 mph or less, a segment's ride rating must be five or below to be considered deficient. Priority scheduling is given to roads with the most severe deficiencies. Good condition is defined as meeting department standards and there is no immediate need for resurfacing.

Validity: The measure is a valid indicator of the percentage of State Highway System pavement in good condition. Road pavements require periodic resurfacing; however, the frequency of resurfacing depends on the volume of traffic, type of traffic (heavier

Performance Validity and Reliability

Exhibit IV

vehicles cause more “wear and tear”), pavement material variability and weather conditions.

Resurfacing preserves the structural integrity of highway pavements and includes pavement resurfacing, pavement rehabilitation, and minor reconstruction. Failure to timely resurface a road results in damage to the road base, necessitating costly reconstruction work in addition to resurfacing.

Reliability: Good condition is defined as meeting department standards. A separate pavement evaluation process done for federal reporting purposes provides a range of descriptive terms based on a scale of 0-5: very good, good, fair, mediocre, and poor. This single-number rating method relies heavily on ride condition, which is a generally poor indicator of structural pavement integrity in Florida due to our lack of freeze-thaw cycles. Thus, direct comparison to national data as a reliability check is not always reliable given the differences in methodology and rating scale. Any such comparison would require that ‘poor’ be related to ‘bad’ and other pavements be considered ‘good’ (i.e. acceptable) under the state definition.

External reality checks, such as comparisons to national data, are not necessary due to internal quality controls. Pavement condition is determined by a statewide team, thereby eliminating any bias and chance for District-to-District variations in rating methods. The present agency short range objective is to keep the proportion of State Highway System road pavements which meet department standards at 80%.

The agency long range objective is to preserve the State Highway System. Improvements in survey methodology and instrumentation may occur as technology increases the accuracy of measurements. The data on which the pavement condition outcome is based should remain reliable.

Performance Validity and Reliability

Exhibit IV

Agency: Florida Department of Transportation

Program: Highway/Bridge Construction

Service: Highway/Bridge Construction

Measure: Percent of FDOT-maintained bridges which meet department standards.

Action:

- Requesting revision to approved performance measure.
- Change in data sources or measurement methodologies.
- Requesting new measure.
- Backup for performance measure.

Data Sources And Methodology: Office of Financial Development and the State Maintenance Office, Florida Department of Transportation. The data is derived from the annual bridge inventory from the State Maintenance Office. Meeting standards: The percentage of structures on the State Highway System having a condition rating of either good or excellent – for bridge components of substructure, superstructure and deck; or the culvert condition rating.

Validity: The measure is valid as an indicator of the percentage of state-maintained bridges in good condition. No FDOT-maintained bridge will ever remain open to traffic with a known structural defect that renders it unsafe. Thus, there are no FDOT-maintained bridges in an unsafe condition, only bridges that may need work to prolong their useful life, or bridges that must be replaced because they have exhausted their useful life. This performance measure directly monitors the success of agency Bridge Repair and Replacement Programs, the objective of which is to keep FDOT-maintained bridges in good condition.

Reliability: The measure is reliable in that the mechanics of the data collection process are uniform throughout the state and the data is accurately and consistently recorded.

Performance Validity and Reliability

Exhibit IV

Agency: Florida Department of Transportation

Program: Highway/Bridge Construction

Service: Highway/Bridge Construction

Measure: Percent increase in number of days required for completed construction contracts over original contract days (less weather days).

Action:

- Requesting revision to approved performance measure.
- Change in data sources or measurement methodologies.
- Requesting new measure.
- Backup for performance measure.

Data Sources And Methodology: Construction Office, Florida Department of Transportation. The department tracks construction contract data through its computerized Contracts Reporting System. Once the department and construction firm contract for construction of a road or bridge project and construction commences, the contract time (number of days to complete the project established by the department) and contract amount (cost of the project established by lowest responsible bid) may be adjusted due to a variety of factors. These factors include time lost due to rain or other inclement weather conditions, unanticipated environmental or soil conditions (e.g. discovery of hazardous waste on site), design changes or omissions, and equipment, material, or workforce-related problems of the construction contractor.

The original contract time will predictably increase due to time extensions granted for inclement weather conditions. These increases are excluded from the performance measure since they are unavoidable. Beyond “weather days,” additional time is granted for a variety of other reasons, including extra work, special events (i.e. parades), plan or design changes, material testing delays, and utility relocation delays. Additional days are granted by the department through time extensions, which grant additional time only, and through supplemental agreements, which authorize additional work and often necessitate additional days. The bulk of added days are authorized through supplemental agreements.

Performance Validity and Reliability

Exhibit IV

Validity: The comparison of final contract time to original contract time is a valid indicator of overall construction contracts management.

The Contract Reporting System (CRS), the Supplemental Agreement (SA) Tracking System, and the Time Tracking System are used to collect information for this performance measure. The purpose of the CRS is to facilitate the preparation of itemized construction progress payments, supplemental agreements to contracts and final estimates while providing management reports that show construction progress by contractor, district, fund, etc. The purpose of the SA Tracking System and the Time Tracking System is to provide the department with documentation on the reason for a specific amount for the SA as well as identifying and documenting the party that should share in the responsibility for the additional cost. For the purpose of this performance measure, a completed project is a project for which the "passed date" has been entered into the system by the District Final Estimates staff. The "passed date" is the date the job was, in effect, paid for, which means all contract items have been paid out and there are no outstanding issues such as claims.

Information is collected from the CRS, the SA Tracking System, and the Time Tracking System to obtain the percentage increase in the number of days required for completed construction contracts over original contract days (less weather days). Using these systems, the Office of Construction tracks the contract number, work program item number, lead project number, original days, present days, days used, number of time extensions, contractor (name and vendor number), letting date, final accepted date, and passed date. CRS and the SA Tracking System are used to determine the percent increase in amount paid for construction over original contract amount. The SA Tracking system lists out the work orders making up any supplemental agreements. This includes the amount of the work order, the number of days, the premium cost for the work done, the responsible party for the premium cost, and the reason for the work order. The Time Tracking system lists the time extension work orders with the days and a "reason code" for the work order. Using these systems, the Office of Construction tracks the contract number, WPI number, lead project number, original contract amount, present contract amount, total of approved SAs, regular work to date, contractor (name and vendor number), letting date final accepted date, and passed date.

A monthly edit report is generated to check for inconsistencies between the SA Tracking and Time Tracking systems and CRS. This checks to determine if the total amount and days in CRS match the information in the SA Tracking and Time Tracking system. It also checks the validity of the reason code and if the responsible party has been identified. Quarterly, a detailed report is sent to the districts for their review. Any needed changes are made in the district. Once the changes have been made by the

Performance Validity and Reliability

Exhibit IV

district, the information is closed out. Changes can be made for the next quarter, but they will not be reflected in the current quarterly report. Only appropriate staff with valid user IDs and passwords have access to input or change data in the systems that gather data for these measures. Quality Assurance Reviews are performed which review the actual documents to ensure accuracy of data entry.

Reliability: The data reflected in this measure is captured in the department's Contract Reporting System. The system is stable and has been in use for a number of years. Data from this system can be expected to be consistent and reliable over time.

Performance Validity and Reliability

Exhibit IV

Agency: Florida Department of Transportation

Program: Highway/Bridge Construction

Service: Highway/Bridge Construction

Measure: Percent increase in final amount paid for completed construction contracts over original contract amount.

Action:

- Requesting revision to approved performance measure.
- Change in data sources or measurement methodologies.
- Requesting new measure.
- Backup for performance measure.

Data Sources And Methodology: Construction Office, Florida Department of Transportation. The department tracks construction contract data through its computerized Contracts Reporting System. Once the department and construction firm contract for construction of a road or bridge project and construction commences, the contract time (number of days to complete the project established by the department) and contract amount (cost of the project established by lowest responsible bid) may be adjusted due to a variety of factors. These factors include time lost due to rain or other inclement weather conditions, unanticipated environmental or soil conditions (e.g. discovery of hazardous waste on site), design changes or omissions, and equipment, material or workforce-related problems of the construction contractor.

This measure compares the original contract amount to the final project cost. Increases in cost frequently occur due to authorization of additional work as the project progresses. Significant cost increases could result in delaying planned projects and could indicate a problem in quality of design plans and specifications or in contract management.

The public expects that a project will be delivered “within budget and on schedule.” It is important to assess how well the department manages its construction contracts as it

Performance Validity and Reliability

Exhibit IV

relates to containment of cost and time increases. As explained above, however, some increases are beyond the department's control.

Validity: The comparison of final contract cost to original contract cost is a valid indicator of overall construction contract management.

The Contract Reporting System (CRS), the Supplemental Agreement (SA) Tracking System, and the Time Tracking System are used to collect information for this performance measure. The purpose of the CRS is to facilitate the preparation of itemized construction progress payments, supplemental agreements to contracts and final estimates while providing management reports that show construction progress by contractor, district, fund, etc. The purpose of the SA Tracking System and the Time Tracking System is to provide the department with documentation on the reason for a specific amount for the SA as well as identifying and documenting the party that should share in the responsibility for the additional cost. For the purpose of this performance measure, a completed project is a project for which the "passed date" has been entered into the system by the District Final Estimates staff. The "passed date" is the date the job was, in effect, paid for, which means all contract items have been paid out and there are no outstanding issues such as claims.

Information is collected from the CRS, the SA Tracking System, and the Time Tracking System to obtain the percentage increase in the number of days required for completed construction contracts over original contract days (less weather days). Using these systems, the Office of Construction tracks the contract number, work program item number, lead project number, original days, present days, days used, number of time extensions, contractor (name and vendor number), letting date, final accepted date and passed date. CRS and the SA Tracking System are used to determine the percent increase in amount paid for construction over original contract amount. The SA Tracking system lists out the work orders making up any supplemental agreements. This includes the amount of the work order, the number of days, the premium cost for the work done, the responsible party for the premium cost and the reason for the work order. The Time Tracking system lists the time extension work orders with the days and a "reason code" for the work order. Using these systems, the Office of Construction tracks the contract number, WPI number, lead project number, original contract amount, present contract amount, total of approved SAs, regular work to date, contractor (name and vendor number), letting date, final accepted date and passed date.

Performance Validity and Reliability

Exhibit IV

A monthly edit report is generated to check for inconsistencies between the SA Tracking and Time Tracking systems and CRS. This checks to determine if the total amount and days in CRS match the information in the SA Tracking and Time Tracking system. It also checks the validity of the reason code and if the responsible party has been identified. Quarterly, a detailed report is sent to the districts for their review. Any needed changes are made in the district. Once the changes have been made by the district, the information is closed out. Changes can be made for the next quarter, but they will not be reflected in the current quarterly report. Only appropriate staff with valid user IDs and passwords have access to input or change data in the systems that gather data for these measures. Quality Assurance Reviews are performed which review the actual documents to ensure accuracy of data entry.

Reliability: The data reflected in this measure is captured in the department's Contract Reporting System. The system is stable and has been in use for a number of years. Data from this system can be expected to be consistent and reliable over time.

Performance Validity and Reliability

Exhibit IV

Agency: Florida Department of Transportation

Program: Highway/Bridge Construction

Service: Highway/Bridge Construction

Measure: Number of lane miles let to contract for highway capacity improvements (Turnpike not included).

Action:

- Requesting revision to approved performance measure.
- Change in data sources or measurement methodologies.
- Requesting new measure.
- Backup for performance measure.

Data Sources And Methodology: Office of Financial Development, Florida department of Transportation. Data obtained from the Program Objectives and Accomplishments Report. Actual prior year and projected future year data from the July Adopted Work Program.

For the purposes of this report, the term “contracted” refers to the moment the contract is “let” or “committed.” Lane miles let to contract for highway capacity improvements on the Turnpike are not included in this measure.

Validity: The measure is valid with regard to the number of lane miles to be constructed to increase capacity on the State Highway System (excluding the Turnpike).

The Work Program Administration (WPA) system contains the projects and schedules for capacity improvements. The WPA system also provides other project information and costs. Districts select capacity improvement projects based on 1) local government priority and 2) department-determined needs.

Performance Validity and Reliability

Exhibit IV

Procedures are documented for maintaining the Adopted Work Program, developing the work program, amending the work program and work program instructions for programming and coding information correctly for inclusion in the work program. Source documents are authorized and projects in the work program are subjected to extensive review. Only work program development staff in the Districts and Central Office with valid user IDs and passwords have access to input or change data in WPA. A review committee and Office of Work Program staff validate the data entered into the system. Automated measures are in place to detect errors and provide a trail of activity in the systems. Data output is also reviewed and exceptions are reported.

Reliability: The information is reliable and consistent due to the controls discussed above that are in place and its use in the Program Objectives and Accomplishments Report and the Transportation Commission's Performance and Production Review.

Performance Validity and Reliability

Exhibit IV

Agency: Florida Department of Transportation

Program: Highway/Bridge Construction

Service: Highway/Bridge Construction

Measure: Percent of construction contracts planned for letting that were actually let.

Action:

- Requesting revision to approved performance measure.
- Change in data sources or measurement methodologies.
- Requesting new measure.
- Backup for performance measure.

Data Sources And Methodology: Office of Work Program, Florida Department of Transportation.

Validity: The measure is valid as an indicator of overall progress in completing planned work program construction projects.

Data for the percent of construction contracts planned for letting that were actually let is captured to ensure the department is delivering the projects contained in the current year of the Adopted Work Program. The data collected for this measure is used in the preparation of the Performance Report used in the Executive Board Meeting. The information is also used in the Florida Transportation Commission's Performance and Production Review of the Department of Transportation which reports the status of this performance measure.

"Projects planned for letting" is based on the construction projects included in the current year of the Adopted Work Program. Staff in the Production Management Office review the Adopted Work Program to determine which construction projects are planned for letting. The districts inform Production Management Office staff which construction projects should not be included in the list because of concerns about being able to produce them in the current year. Based on these decisions, the construction projects planned for letting are included in the Production Management Performance Report. Any construction projects included in the Adopted Work Program but not in the list of construction projects planned for letting are included in the August report as "Adopted, but Excluded" projects.

Performance Validity and Reliability

Exhibit IV

Production Management Office staff receive and review an Executive Bid Summary package monthly. District and Design/Build contracts are also tracked and commitments recorded when the reports show approved amounts. This package identifies which construction projects have been let in the current month.

Procedures are documented for maintaining the Adopted Work Program, developing the work program, and amending the work program and work program instructions for collecting the appropriate information in the work program. There is also a procedure for Production Performance reporting. Source documents are authorized and projects in the work program are subjected to extensive review. Only appropriate staff with valid user IDs and passwords have access to input or change data in the systems that gather the data for this measure. Additionally, the Florida Transportation Commission is required by statute to monitor, at least quarterly, the efficiency, productivity, and management of the department, using performance and production standards developed by the Commission. One of the measures the Florida Transportation Commission monitors is the percent of construction contracts planned for letting that were actually let.

The Office of Inspector General verified the information included in the Florida Transportation Commission's Performance and Production Review of the Department of Transportation matches the information in the year-end Production Management Performance Report.

Reliability: The information is reliable and consistent due to the controls in place and its use in the Transportation Commission's Performance and Production Review.

Performance Validity and Reliability

Exhibit IV

Agency: Florida Department of Transportation

Program: Highway/Bridge Construction

Service: Highway/Bridge Construction

Measure: Number of bridges contracted for repair (Turnpike not included).

Action:

- Requesting revision to approved performance measure.
- Change in data sources or measurement methodologies.
- Requesting new measure.
- Backup for performance measure.

Data Sources And Methodology: Office of Financial Development, Florida Department of Transportation. Data obtained from the Program Objectives and Accomplishments Report. Actual prior year and projected future year data from the July Adopted Work Program.

For the purposes of this report, the term “contracted” refers to the moment the contract is “let” or “committed.” Turnpike bridges are not included in this measure.

Validity: The measure is valid as an indicator of agency use of contracts for bridge repair (excluding Turnpike bridges).

The number of bridges let to contract for repair is compiled from the FDOT Work Program Administration computer system, which is the department’s source of commitment and financial information for projects undertaken by the department. The term “number of bridges let to contract for repair (Turnpike not included)” refers to the number of bridges committed to construction contract for either repair or rehabilitation work to correct structural deterioration related problems.

Performance Validity and Reliability

Exhibit IV

Reliability: The measure is reliable and consistent due to the elaborate review process employed in developing the work program.

Performance Validity and Reliability

Exhibit IV

Agency: Florida Department of Transportation

Program: Highway/Bridge Construction

Service: Highway/Bridge Construction

Measure: Number of bridges contracted for replacement (Turnpike not included).

Action:

- Requesting revision to approved performance measure.
- Change in data sources or measurement methodologies.
- Requesting new measure.
- Backup for performance measure.

Data Sources And Methodology: Office of Financial Development, Florida Department of Transportation. Data obtained from the Program Objectives and Accomplishments Report. The figure includes local bridges as well as those on the State Highway System. Actual prior year and projected future year data from the July 1 Adopted Work Program.

For the purposes of this report, the term “contracted” refers to the moment the contract is “let” or “committed.” Turnpike bridges are not included in this measure.

Validity: The measure is valid as an overall indicator of the agency use of contracts for bridge replacement (excluding Turnpike bridges). It should be noted that the size, complexity, and cost of bridge replacement projects vary widely. Thus, this measure is not valid as a direct workload indicator for workload or budget needs.

The number of bridges let to contract for replacement is compiled from the FDOT Work Program Administration computer system, which is the department’s source of commitment and financial information for projects undertaken by the department. The number of bridges let to contract for replacement includes bridges scheduled for

Performance Validity and Reliability

Exhibit IV

replacement because the bridge is structurally deficient, posted for weight restriction or is more economical to replace rather than repair or rehabilitate.

Reliability: The measure is reliable and consistent due to the elaborate review process employed in developing the work program.

Performance Validity and Reliability

Exhibit IV

Agency: Florida Department of Transportation

Program: Highway/Bridge Construction

Service: Highway/Bridge Construction

Measure: Number of projects certified ready for construction (Turnpike not included).

Action:

- Requesting revision to approved performance measure.
- Change in data sources or measurement methodologies.
- Requesting new measure.
- Backup for performance measure.

Data Sources And Methodology: Right-of-Way Office, Florida Department of Transportation. Data is obtained from the Central Office Right-of-Way files containing documents which certify readiness of projects for construction.

It is important to note that the standard used for FY 2009/10 is developed from the second year of a two-year projection developed at the beginning of FY 2008/09. Because the projection is well in advance of the time when detailed project information is available, it is subject to change. This change is noticeable in the difference between these standards and the plan published by the Transportation Commission that is completed immediately prior to publication. The projection for projects to be certified in the second year is based on associated construction projects typically in the third or fourth year of the work program and sometimes later. The projects are still in the design phase and right of way requirements may not yet have been established, title work may not yet be completed, and right of way maps may not yet have been prepared. As design work progresses, right of way requirements are better defined and a better estimate for certification of the right of way can be made. Additionally, since the associated construction projects are in the outer years of the work program, the schedules frequently change due to local government input or funding constraints. This impacts the schedule for the right of way segment of these projects. The department anticipates requesting an update to the standard immediately prior to the beginning of FY 2009/10 when better information is available and the standard can be made more meaningful.

Performance Validity and Reliability

Exhibit IV

Validity: The measure is valid as an indicator of the total number of projects (excluding Turnpike projects) certified as ready for construction but not of the amount of effort or funding needed to acquire the parcels needed for each project.

Since no construction contract is let, with the exception of design-build contracts, until all right-of-way parcels needed for the project are acquired and certified as “clear” (ready for construction to proceed), an efficient and economically effective right-of-way program is an essential component of productivity. On design-build contracts, the right of way necessary for construction of the project or any portion thereof, must be certified as “clear” prior to the start of construction activities.

In the usual production cycle of a road or bridge, the necessary right-of-way is acquired immediately prior to the start of construction. When feasible, the department acquires needed right-of-way in advance of construction - purchasing now, rather than later when value has appreciated, land that will be needed for planned future roads or for widening existing roads.

Reliability: Based on the importance of this information, there are extensive reviews by central office and district staff of the monthly results published in the Production Management Report. These reviews ensure the reliability of the data.

Performance Validity and Reliability

Exhibit IV

Agency: Florida Department of Transportation

Program: Highway Operations

Service: Highway Operations

Measure: Maintenance condition rating of state highway system as measured against the department's maintenance standards.

Action:

- Requesting revision to approved performance measure.
- Change in data sources or measurement methodologies.
- Requesting new measure.
- Backup for performance measure.

Data Sources And Methodology: Maintenance Office, Florida Department of Transportation. The quality and effectiveness of the agency's routine maintenance program is systematically and uniformly evaluated by the Maintenance Rating Program (MRP). The department's objective is to achieve and maintain an annual maintenance rating of 80.

Validity: The measure is a valid indicator of the maintenance condition of the State Highway System. The Maintenance Rating Program has been used by the department since 1985.

Florida law requires the department to provide routine and uniform maintenance of the State Highway System. Routine maintenance encompasses highway repair (e.g. repairing potholes, patching), roadside upkeep (e.g. mowing, litter removal), drainage management, and traffic services (e.g. road signs, striping). Adequate and uniform road maintenance on a statewide basis is essential for ensuring the optimum safety, preservation and aesthetic condition of the transportation system.

Performance Validity and Reliability

Exhibit IV

Reliability: The maintenance condition rating is a long-standing internal management tool. A formal statistical review of the MRP by Florida State University found that the Maintenance Rating Program produces statistically valid indicators of the overall condition of the State Highway System. The rating is reliable.

Performance Validity and Reliability

Exhibit IV

Agency: Florida Department of Transportation

Program: Highway Operations

Service: Highway Operations

Measure: Commercial vehicle weighings.

Action:

- Requesting revision to approved performance measure.
- Change in data sources or measurement methodologies.
- Requesting new measure.
- Backup for performance measure.

Data Sources And Methodology: Motor Carrier Compliance Office, Florida Department of Transportation. The source of commercial vehicle weight law enforcement data is the agency's Motor Carrier Compliance Office, which operates fixed weigh stations on major highways and whose field patrol officers use portable scales to weigh trucks on other roads. Truck weight laws apply to all vehicles, commercial or otherwise; however, the term 'commercial vehicle' is used to indicate that the area of emphasis is the large trucks used by businesses. Counts are maintained on a daily basis on both total number of vehicles weighed and the number of enforcement actions taken.

Validity: The measure is a valid indicator of that which it purports to measure: the number of commercial vehicle weighings performed. Officers weigh commercial vehicles by two methods. First, weight inspectors operating weigh stations provide a "screening" service for the enforcement program, weighing more than 99 percent of the total trucks weighed and accounting for approximately 62 percent of the dollar amount of overweight penalties (fines) collected. This is because truck operators who know that their routes will take them through a weigh station do not intentionally overload; therefore, the amounts of excess weights and resulting penalties are comparatively small, with few exceptions.

Performance Validity and Reliability

Exhibit IV

Second, patrol officers, working bypasses and other routes without fixed scales, may apprehend those operators who do not necessarily expect to be weighed. Thus, the remaining weighings (less than 1% of the total weighings) results in the other 38 percent (approximately) of penalty dollars collected. These two methods of weighing vehicles complement one another and weight enforcement would be ineffective without both of them functioning.

Not all commercial motor vehicles operating on bypass routes are weighed. Officers are trained to detect commercial vehicles which are overweight.

All patrol officers are equipped with portable scales. They inspect commercial vehicles for weight violations on fixed-scale bypass routes and in other geographic areas where routing of such traffic does not include any fixed-scale sites.

Reliability: The data supporting this performance measure is reliable because of the process controls that are in place. The controls ensure that data is consistently reported.

Performance Validity and Reliability

Exhibit IV

Agency: Florida Department of Transportation

Program: Highway Operations

Service: Highway Operations

Measure: Lane miles maintained on the State Highway System (Turnpike not included).

Action:

- Requesting revision to approved performance measure.
- Change in data sources or measurement methodologies.
- Requesting new measure.
- Backup for performance measure.

Data Sources And Methodology: Transportation Statistics Office, Florida Department of Transportation. December Mileage Report for the State Highway System. The figure for out-years are estimated based on the number of new lane miles on the State Highway System (excluding the Turnpike).

Validity: The measure is a valid indicator of the number of lane miles on the State Highway System (excluding the Turnpike).

Reliability: Data supporting the performance measure is reliable. Procedures are in place to ensure accurate data collection, and quality control activities are conducted on an ongoing basis.

Performance Validity and Reliability

Exhibit IV

Agency: Florida Department of Transportation

Program: Highway Operations

Service: Highway Operations

Measure: Percent of commercial vehicles weighed that were overweight: fixed and WIM scales; portable scales.

Action:

- Requesting revision to approved performance measure.
- Change in data sources or measurement methodologies.
- Requesting new measure.
- Backup for performance measure.

Data Sources And Methodology: Motor Carrier Compliance Office, Florida Department of Transportation. These measures are derived by dividing the number of trucks cited for weight law violations by the total number of vehicles weighed at fixed enforcement sites and vehicles weighed using portable scales. The source of commercial vehicle weight law enforcement data is the agency's Motor Carrier Compliance Office, which operates fixed weigh stations on major highways and whose field patrol officers use portable scales to weigh trucks on other state roads. Truck weight laws apply to all vehicles, commercial or otherwise; however, the term "commercial vehicle" is used to indicate that the area of emphasis is the large trucks used by businesses. Counts are maintained on a daily basis on both total number of vehicles weighed and the number of enforcement actions taken.

Validity: The measure reports the percent of commercial motor vehicle weighings which showed the vehicle was overweight. It is important to note that vehicles observed with the Weigh in Motion technology as being overweight are weighed via a fixed scale to confirm the vehicle is actually overweight. It should also be noted that not all commercial vehicles on the highway are weighed.

Performance Validity and Reliability

Exhibit IV

Initially, the number of cited overweight vehicles may go up as enforcement efforts take effect. Later, as the increased risk of discovery becomes widely known, the number of overweight vehicles—and, thus, the number of citations—should decline. However, since it is likely that the number of weighed vehicles is expected to increase more rapidly due to technological advances, the measure as stated is likely to decline. Comparison of this measure to others will be necessary to provide a complete picture.

The program provides enforcement of laws and agency rules which regulate the weight, size, safety, and registration requirements of commercial vehicles operating on the highway system. Through the use of a statewide network of weigh station facilities and patrol personnel utilizing portable scales, commercial vehicle traffic is monitored for compliance with legislatively established requirements.

Reliability: Collection of the necessary input data is a long-established process with substantial supervisor review. The input data are considered to be reliable. Rapid increases in vehicle weighings due to technical advances (e.g. weigh-in-motion devices) are likely to reduce the percent of vehicles found in violation even if the number of such vehicles increases. This causes the measure to be incomplete if presented without also reporting the input data values and their trends over time.

Performance Validity and Reliability

Exhibit IV

Agency: Florida Department of Transportation

Program: Highway Operations

Service: Highway Operations

Measure: Number of commercial vehicle safety inspections performed.

Action:

- Requesting revision to approved performance measure.
- Change in data sources or measurement methodologies.
- Requesting new measure.
- Backup for performance measure.

Data Sources And Methodology: Motor Carrier Compliance Office, Florida Department of Transportation.

Validity: The measure is a valid indicator of that which it purports to measure: the number of commercial vehicle safety inspections performed. However, it is important to note that safety inspections are not conducted on all commercial motor vehicles. Patrol Officers are trained to spot commercial motor vehicles that may have weight or length violations and/or suffer from safety problems. Safety inspections are conducted during traffic stops, often initiated by other than safety-related observations.

The program provides enforcement of laws and agency rules which regulate the weight, size, safety, and registration requirements of commercial vehicles operating on the highway system. Through the use of a statewide network of weigh station facilities and patrol personnel utilizing portable scales, commercial vehicle traffic is monitored for compliance with legislatively established requirements.

All patrol officers are equipped with the necessary equipment for performing safety inspections. They inspect commercial vehicles and drivers for safety and hazardous

Performance Validity and Reliability

Exhibit IV

materials violations in all geographic areas including most weigh stations and bypass routes.

Safety and hazardous materials enforcement activities consist of: (a) Comprehensive inspections of trucks and drivers on the road; (b) Inspections of buses and drivers at selected sites (because of inherent hazards in bus inspections); and (c) Terminal audits at motor carrier office facilities. Constraints on available manpower resources require a careful selection of vehicles for roadside inspections.

Vehicles, found to be imminently hazardous, and drivers, determined to be unqualified, are removed from service immediately. Vehicles remain out of service until equipment defects are corrected; drivers remain out of service until they become qualified.

Reliability: The data supporting this performance measure is reliable because of the process controls that are in place. The controls ensure that data is consistently reported.

Performance Validity and Reliability

Exhibit IV

Agency: Florida Department of Transportation

Program: Highway Operations

Service: Highway Operations

Measure: Number of portable scale weighings performed.

Action:

- Requesting revision to approved performance measure.
- Change in data sources or measurement methodologies.
- Requesting new measure.
- Backup for performance measure.

Data Sources And Methodology: Motor Carrier Compliance Office, Florida Department of Transportation. The source of commercial vehicle weight law enforcement data is the agency's Motor Carrier Compliance Office, which operates fixed weigh stations on major highways and whose field patrol officers use portable scales to weigh trucks on other roads. Truck weight laws apply to all vehicles, commercial or otherwise; however, the term "commercial vehicle" is used to indicate that the area of emphasis is the large trucks used by businesses. Counts are maintained on a daily basis on both total number of vehicles weighed and the number of enforcement actions taken.

Validity: The measure is a valid indicator of that which it purports to measure: the number of portable scale weighings performed. However, not all commercial motor vehicles operating on bypass routes are weighed. Officers are trained to detect commercial vehicles which are overweight.

Officers weigh commercial vehicles by two methods. First, weight inspectors operating weigh stations provide a "screening" service for the enforcement program, weighing more than 99 percent of the total trucks weighed and accounting for approximately 62 percent of the dollar amount of overweight penalties (fines) collected. This is because truck operators who know that their routes will take them through a weigh station do not

Performance Validity and Reliability

Exhibit IV

intentionally overload; therefore the amounts of excess weights and resulting penalties are comparatively small, with few exceptions.

Second, patrol officers, working bypasses and other routes without fixed scales, may apprehend those operators who do not necessarily expect to be weighed. Thus the remaining weighings (less than 1% of total weighings) results in the other 38 percent (approximately) of penalty dollars collected. These two methods of weighing vehicles complement one another and weight enforcement would be ineffective without both of them functioning.

The program provides enforcement of laws and agency rules which regulate the weight, size, safety, and registration requirements of commercial vehicles operating on the highway system. Through the use of a statewide network of weigh station facilities and patrol personnel utilizing portable scales, commercial vehicle traffic is monitored for compliance with legislatively established requirements.

Reliability: The data supporting this performance measure is reliable because of the process controls that are in place. The controls ensure that data is consistently reported.

Performance Validity and Reliability

Exhibit IV

Agency: Florida Department of Transportation

Program: Executive Direction/Support Services

Service: Executive Direction/Support Services

Measure: Percent of agency administration and support costs and positions compared to total agency costs and positions.

Action:

- Requesting revision to approved performance measure.
- Change in data sources or measurement methodologies.
- Requesting new measure.
- Backup for performance measure.

Data Source and Methodology: Budget Office, Florida Department of Transportation. The first part of this measure is the percent of the agency administration and support costs compared to total agency costs. The second part of the measure is the percent of the agency administration and support positions compared to total agency positions.

Data are obtained from the Legislative Appropriations System/Planning and Budgeting Subsystem (LAS/PBS).

Validity: The measure is a valid indicator of that which it purports to measure: the percent of agency administration and support costs and positions compared to total agency costs and positions.

Reliability: The data supporting this performance measure is reliable because of the process controls that are in place. The controls ensure that data is consistently reported.

Performance Validity and Reliability

Exhibit IV

Agency: Florida Department of Transportation

Program: Florida's Turnpike Systems

Service: Florida's Turnpike Enterprise

Measure: Operational cost per toll transaction.

Action:

- Requesting revision to approved performance measure.
- Change in data sources or measurement methodologies.
- Requesting new measure.
- Backup for performance measure.

Data Sources And Methodology: Office of Toll Operations, Florida Department of Transportation. The data is from standard reporting systems. The measure is calculated by dividing the total cost of toll operations by the number of vehicle toll transactions during a given fiscal year.

Validity: The measure is a valid indicator of that which it purports to measure: the operational cost per toll transaction. The operational cost for toll facilities as it relates to the volume of transactions at these facilities is a direct measure of the efficiency of operations.

This measure will allow the agency to monitor collection costs relative to demand. Lower operational costs means that more funds are available for maintenance, debt service payments and improvements to the system.

Reliability: This measure is the result of dividing the total operational cost of toll collection activities (capital costs are not included) by the number of transactions (which is the output measure). An indicator of the validity and reliability of operational cost is the on-going process of reviewing expenditures in relation to the operating budget and to planned expenditures. Variances are reported to the Disbursement Office for review.

Performance Validity and Reliability

Exhibit IV

An indicator of the validity and reliability of toll transaction data is the process used to balance estimated toll collections to the number of toll transactions and the daily bank deposit. Significant variances are reported to the Office of Toll Transactions and are reviewed and audited.

A significant change that may affect our measures relates to the cost of purchasing SunPass transponders. Beginning July 1, 2001, the costs for purchasing SunPass transponders is charged by the department as a cost of operations. Because this equipment is sold to the patron at a price significantly less than the department's purchase price, this action will increase operating costs without a commensurate increase in either traffic or revenue. Although we don't know at this time what the overall impact will be on our measures, it may cause us to change our requested standard at some future date.

Performance Validity and Reliability

Exhibit IV

Agency: Florida Department of Transportation

Program: Florida's Turnpike Systems

Service: Florida's Turnpike Enterprise

Measure: Toll transactions.

Action:

- Requesting revision to approved performance measure.
- Change in data sources or measurement methodologies.
- Requesting new measure.
- Backup for performance measure.

Data Sources And Methodology: Office of Toll Operations, Florida Department of Transportation. Data is obtained from the Toll Collections System Data Base.

Validity: The measure is a valid indicator of that which it purports to measure: the number of toll transactions. This measure is one of the data elements used in calculating the operational cost per toll transaction, which is a direct measure of the efficiency of operations.

The measure appropriately captures the number of toll transactions. It is used in calculating the operational cost per toll transaction, which is a direct measure of the efficiency of toll operations.

Toll revenues are used to pay debt service on bonds issued for construction and maintenance of a facility. After the bonds are paid off, toll revenues are used for facility maintenance and other transportation purposes. To the extent that operational costs to collect tolls increase, less net toll revenue is available for debt service or other purposes.

Performance Validity and Reliability

Exhibit IV

Since tolls are fees paid by toll facility users who have an expectation that the maximum amount of tolls collected be used to pay off the debt or for other transportation improvements, toll collection costs should be contained and carefully managed.

Reliability: An indicator of the validity and reliability of toll transaction data is the process used to balance estimated toll collections to the number of toll transactions and the daily bank deposit. Significant variances are reported to the Office of Toll Transactions and are reviewed and audited.

Performance Validity and Reliability

Exhibit IV

Agency: Florida Department of Transportation

Program: Florida's Turnpike Systems

Service: Florida's Turnpike Enterprise

Measure: Number of intrastate highway lane miles contracted for highway capacity improvements (Turnpike only).

Action:

- Requesting revision to approved performance measure.
- Change in data sources or measurement methodologies.
- Requesting new measure.
- Backup for performance measure.

Data Sources And Methodology: Office of Financial Development, Florida Department of Transportation. Data obtained from the Program Objectives and Accomplishments Report. Actual prior year and projected future year data from the July Adopted Work Program.

For the purposes of this report, the term "contracted" refers to the moment the contract is "let" or "committed."

Validity: The measure is valid with regard to the number of intrastate highway lane miles to be constructed to increase highway capacity on the Turnpike.

The Work Program Administration (WPA) system contains the projects and schedules for capacity improvements. The WPA system also provides other project information and costs. Districts select capacity improvement projects based on 1) local government priority, and 2) department-determined needs.

Procedures are documented for maintaining the Adopted Work Program, developing the work program, amending the work program and work program instructions for programming and coding information correctly for inclusion in the work program. Source documents are authorized and projects in the work program are subjected to extensive review. Only work program development staff in the districts and central office with valid user IDs and passwords have access to input or change data in WPA.

Performance Validity and Reliability

Exhibit IV

A review committee and Office of Work Program staff validate the data entered into the system. Automated measures are in place to detect errors and provide a trail of activity in the systems. Data output is also reviewed and exceptions are reported.

Reliability: The information is reliable and consistent due to the controls discussed above that are in place and its use in the Program Objectives and Accomplishments Report and the Transportation Commission's Performance and Production Review.

Performance Validity and Reliability

Exhibit IV

Agency: Florida Department of Transportation

Program: Florida's Turnpike Systems

Service: Florida's Turnpike Enterprise

Measure: Number of lane miles let to contract for resurfacing (Turnpike only).

Action:

- Requesting revision to approved performance measure.
- Change in data sources or measurement methodologies.
- Requesting new measure.
- Backup for performance measure.

Data Sources And Methodology: Office of Financial Development, Florida Department of Transportation. Data obtained from the Program Objectives and Accomplishments Report. Actual prior year and projected future year data from the July Adopted Work Program.

For the purposes of this report, the term "contracted" refers to the moment the contract is "let" or "committed."

Validity: The measure is valid with regard to the number of lane miles (on the Turnpike) let to contract for resurfacing.

The Pavement Condition Survey (PCS), Roadway Characteristics Inventory (RCI) system, and Pavement Management Reporting System (PAVMARS) contain information related to pavement condition and characteristics. They are used to develop projects which are entered into the Work Program Administration (WPA) system. The WPA system contains the projects and schedules for the Resurfacing Program. The WPA also includes other project information and costs. The Districts prioritize resurfacing projects for inclusion in the work program from Pavement Condition Survey reports which identify deficient pavement segments.

Procedures are documented for maintaining the Adopted Work Program, developing the work program, and amending the work program and work program instructions for collecting the appropriate information for inclusion in the work program. There are also user manuals for the systems used to collect the data for these measures. Source documents are authorized and projects in the work program are subjected to extensive

Performance Validity and Reliability

Exhibit IV

review. Only work program development staff in the districts and central office with valid user IDs and passwords have access to input or change data in WPA. A review committee, district and Office of Work Program staff validate the data entered into the system. Automated measures are in place to detect errors and provide a trail of activity in the systems. Data output is also reviewed and exceptions are reported.

Reliability: The information is reliable and consistent due to the controls discussed above that are in place and its use in the Program Objectives and Accomplishments Report and in the Transportation Commission's Performance and Production Review.

Performance Validity and Reliability

Exhibit IV

Agency: Florida Department of Transportation

Program: Florida's Turnpike Systems

Service: Florida's Turnpike Enterprise

Measure: Number of bridges contracted for repair or replacement (Turnpike only).

Action:

- Requesting revision to approved performance measure.
- Change in data sources or measurement methodologies.
- Requesting new measure.
- Backup for performance measure.

Data Sources And Methodology: Office of Financial Development, Florida Department of Transportation. Data obtained from the Program Objectives and Accomplishments Report. The figure includes local bridges as well as those on the State Highway System. Actual prior year and projected future year data from the July 1 Adopted Work Program.

For the purposes of this report, the term "contracted" refers to the moment the contract is "let" or "committed."

Validity: The measure is valid as an indicator of agency use of contracts for Turnpike bridge repair and replacement. It should be noted that the size, complexity, and cost of bridge replacement projects vary widely. Thus, this measure is not valid as a direct workload indicator for workload or budget needs.

The number of Turnpike bridges let to contract for repair or replacement is compiled from the FDOT Work Program Administration computer system, which is the department's source of commitment and financial information for projects undertaken by the department. The measure refers to both a) the number of Turnpike bridges that are committed to construction contract for either repair or rehabilitation work to correct structural deterioration related problems, and b) the number of Turnpike bridges let to contract for replacement which includes bridges that are structurally deficient, posted for weight restriction, or are more economical to replace than they are to repair or rehabilitate.

Performance Validity and Reliability

Exhibit IV

Reliability: The measure is reliable and consistent due to the elaborate review process employed in developing the work program.

Performance Validity and Reliability

Exhibit IV

Agency: Florida Department of Transportation

Program: Florida's Turnpike Systems

Service: Florida's Turnpike Enterprise

Measure: Lane miles maintained on the State Highway System (Turnpike only).

Action:

- Requesting revision to approved performance measure.
- Change in data sources or measurement methodologies.
- Requesting new measure.
- Backup for performance measure.

Data Sources And Methodology: Transportation Statistics Office, Florida Department of Transportation. December Mileage Report for the Turnpike portion of the State Highway System. Figure for out-years are estimated based on the number of new lane miles on the Turnpike expected to be open to traffic.

Validity: The measure is a valid indicator of the number of lane miles on the Turnpike portion of the State Highway System.

Reliability: Data supporting the performance measure is reliable. Procedures are in place to ensure accurate data collection, and quality control activities are conducted on an ongoing basis.

Performance Validity and Reliability

Exhibit IV

Agency: Florida Department of Transportation

Program: Florida's Turnpike Systems

Service: Florida's Turnpike Enterprise

Measure: Operational cost per dollar collected.

Action:

- Requesting revision to approved performance measure.
- Change in data sources or measurement methodologies.
- Requesting new measure.
- Backup for performance measure.

Data Sources And Methodology: Office of Toll Operations, Florida Department of Transportation. The data is from standard reporting systems. The measure is calculated by dividing the total cost of toll operations by the total amount collected during a given fiscal year.

Validity: The measure is a valid indicator of that which it purports to measure: the operational cost per dollar collected. Any fluctuations in this measure will be primarily a result of toll rate changes and not operational factors. As a result, the measure is not a valid indicator of Toll Operations performance.

Reliability: An indicator of the validity and reliability of operational cost is the on-going process of reviewing expenditure in relation to the operating budget and to planned expenditures. Variances are reported to the Disbursement Office for review. There are a number of sources for determining the reliability of dollars collected, including bank statements, deposit transmittal forms and FLAIR revenue reports.

A significant change that may affect our measures relates to the cost of purchasing SunPass transponders. Beginning July 1, 2001, the costs for purchasing SunPass transponders is charged by the department as a cost of operations. Because this

Performance Validity and Reliability

Exhibit IV

equipment is sold to the patron at a price significantly less than the department's purchase price, this action will increase operating costs without a commensurate increase in either traffic or revenue. Although we don't know at this time what the overall impact will be on our measures, it may cause us to change our requested standard at some future date.

Performance Validity and Reliability

Exhibit IV

Agency: Florida Department of Transportation

Program: Florida's Turnpike Systems

Service: Florida's Turnpike Enterprise

Measure: Number of lane miles let to contract for highway capacity improvements (Turnpike only).

Action:

- Requesting revision to approved performance measure.
- Change in data sources or measurement methodologies.
- Requesting new measure.
- Backup for performance measure.

Data Sources And Methodology: Office of Financial Development, Florida Department of Transportation. Data obtained from the Program Objectives and Accomplishments Report. Actual prior year and projected future year data from the July Adopted Work Program.

For the purposes of this report, the term "contracted" refers to the moment the contract is "let" or "committed."

Validity: The measure is valid with regard to the number of lane miles to be constructed to increase highway capacity on the Turnpike.

The Work Program Administration (WPA) system contains the projects and schedules for capacity improvements. The WPA system also provides other project information and costs. Districts select capacity improvement projects based on 1) local government priority, and 2) department-determined needs.

Procedures are documented for maintaining the Adopted Work Program, developing the work program, amending the work program and work program instructions for programming and coding information correctly for inclusion in the work program. Source documents are authorized and projects in the work program are subjected to extensive review. Only work program development staff in the districts and central Office with valid user IDs and passwords have access to input or change data in WPA. A review committee and Office of Work Program staff validate the data entered into the

Performance Validity and Reliability

Exhibit IV

system. Automated measures are in place to detect errors and provide a trail of activity in the systems. Data output is also reviewed and exceptions are reported.

Reliability: The information is reliable and consistent due to the controls discussed above that are in place and its use in the Program Objectives and Accomplishments Report and the Transportation Commission's Performance and Production Review.

Performance Validity and Reliability

Exhibit IV

Agency: Florida Department of Transportation

Program: Florida's Turnpike Systems

Service: Florida's Turnpike Enterprise

Measure: Bridges let to contract for repair (Turnpike only).

Action:

- Requesting revision to approved performance measure.
- Change in data sources or measurement methodologies.
- Requesting new measure.
- Backup for performance measure.

Data Sources And Methodology: Office of Financial Development, Florida Department of Transportation. Data obtained from the Program Objectives and Accomplishments Report. Actual prior year and projected future year data from the July Adopted Work Program.

For the purposes of this report, the term "contracted" refers to the moment the contract is "let" or "committed."

Validity: The measure is valid as an indicator of agency use of contracts for Turnpike bridge repair.

The number of Turnpike bridges let to contract for repair is compiled from the FDOT Work Program Administration computer system, which is the department's source of commitment and financial information for projects undertaken by the department. The term "number of Turnpike bridges let to contract for repair" refers to the number of Turnpike bridges committed to construction contract for either repair or rehabilitation work to correct structural deterioration related problems.

Reliability: The measure is reliable and consistent due to the elaborate review process employed in developing the annual work program.

Performance Validity and Reliability

Exhibit IV

Agency: Florida Department of Transportation

Program: Executive Direction/Support Services

Service: Executive Direction/Support Services

Measure: Percent of agency administration and support costs and positions compared to total agency costs and positions.

Action:

- Requesting revision to approved performance measure.
- Change in data sources or measurement methodologies.
- Requesting new measure.
- Backup for performance measure.

Data Source and Methodology: Budget Office, Florida Department of Transportation. The first part of this measure is the percent of the agency administration and support costs compared to total agency costs. The second part of the measure is the percent of the agency administration and support positions compared to total agency positions.

Data are obtained from the Legislative Appropriations System/Planning and Budgeting Subsystem (LAS/PBS).

Validity: The measure is a valid indicator of that which it purports to measure: the percent of agency administration and support costs and positions compared to total agency costs and positions.

Reliability: The data supporting this performance measure is reliable because of the process controls that are in place. The controls ensure that data is consistently reported.

Performance Validity and Reliability
Exhibit IV

This page left blank intentionally.

Identification of Associated Activities Contributing to Performance Measures
Exhibit V

Identification of Associated Activities Contributing to Performance Measures

Exhibit V

Measure Number	Approved Performance Measures for FY 2008-09 (Words)	Associated Activities Title
----------------	--	-----------------------------

Program: Highway And Bridge Construction

1	Number of right-of-way parcels acquired (Turnpike not included)	ACT5300 Right of way land ACT5320 Right of way support
2	Number of projects certified ready for construction (Turnpike not included)	ACT5300 Right of way land ACT5320 Right of way support
3	Ratio of transit ridership growth to population growth	ACT5380 Transit ACT5400 Transportation Disadvantaged ACT5500 Public Transportation Operations
4	Average cost per requested one-way trip for transportation disadvantaged	ACT5400 Transportation Disadvantaged
5	Number of passenger enplanements	ACT5360 Aviation ACT5440 Intermodal
6	Number of one-way public transit passenger trips	ACT5380 Transit ACT5400 Transportation Disadvantaged ACT5500 Public Transportation Operations
7	Number of cruise embarkations and disembarkations at Florida ports	ACT5440 Intermodal ACT5460 Seaports ACT5480 Seaport Development and Access Debt Service
8	Number of one-way trips provided (transportation disadvantaged)	ACT5400 Transportation Disadvantaged

Identification of Associated Activities Contributing to Performance Measures

Exhibit V

Measure Number	Approved Performance Measures for FY 2008-09 (Words)	Associated Activities Title
Program: Highway Operations		
9	Maintenance condition rating of state highway system as measured against the department's Maintenance standards	ACT5540 Routine Maintenance ACT5220 Materials Testing & Research
10	Percent of commercial vehicles weighed that were overweight: fixed scale weighings	ACT5580 Motor Carrier Compliance
11	Percent of commercial vehicles weighed that were overweight: portable scale weighings	ACT5580 Motor Carrier Compliance
12	Number of commercial vehicle weighings	ACT5580 Motor Carrier Compliance
13	Number of commercial vehicle safety inspections performed	ACT5580 Motor Carrier Compliance
14	Number of portable scale weighings performed	ACT5580 Motor Carrier Compliance
15	Lane miles maintained on the State Highway System (Turnpike not included)	ACT5540 Routine Maintenance
16	Total budget for intrastate highway construction and arterial highway construction divided by the number of lane miles let to contract	ACT5020 Intrastate Highways ACT5040 Arterial Highways
17	Number of motor vehicle fatalities per 100 million miles traveled	ACT5100 Highway Safety Construction ACT5580 Motor Carrier Compliance ACT5020 Intrastate Highways ACT5040 Arterial Highways ACT5520 Bridge Inspection ACT5080 Repair and Replace Bridges ACT5220 Materials Testing & Research ACT5060 Resurface Roads ACT5540 Routine Maintenance
18	Percentage of state highway system pavement meeting department standards	ACT5060 Resurface Roads ACT5220 Materials Testing & Research
19	Percentage of FDOT-maintained bridges which meet department standards	ACT5520 Bridge Inspection ACT5080 Repair and Replace Bridges

Identification of Associated Activities Contributing to Performance Measures

Exhibit V

Measure Number	Approved Performance Measures for FY 2008-09 (Words)	Associated Activities Title
20	Percentage increase in number of days required for completed construction contracts over original contract days (less weather days)	ACT5020 Intrastate Highways ACT5040 Arterial Highways ACT5520 Bridge Inspection ACT5080 Repair and Replace Bridges
21	Percentage increase in final amount paid for completed construction contracts over original contract amount	ACT5020 Intrastate Highways ACT5040 Arterial Highways ACT5520 Bridge Inspection ACT5080 Repair and Replace Bridges
22	Number of lane miles let to contract for resurfacing (Turnpike not included)	ACT5060 Resurface Roads
23	Number of lane miles let to contract for highway capacity improvements (Turnpike not included)	ACT5020 Intrastate Highways ACT5040 Arterial Highways
24	Percentage of construction contracts planned for letting that were actually let	ACT5020 Intrastate Highways ACT5040 Arterial Highways ACT5520 Bridge Inspection ACT5080 Repair and Replace Bridges
25	Number of bridges let to contract for repair (Turnpike not included)	ACT5080 Repair and Replace Bridges
26	Number of bridges let to contract for replacement (Turnpike not included)	ACT5080 Repair and Replace Bridges

Identification of Associated Activities Contributing to Performance Measures

Exhibit V

Measure Number	Approved Performance Measures for FY 2008-09 (Words)	Associated Activities Title
Executive Direction and Support Services		
34	Percent of agency administrative and support costs and positions compared to total agency costs and positions	ACT0010 Executive Direction ACT0020 General Counsel/Legal ACT0030 Legislative Affairs ACT0040 External Affairs ACT0050 Cabinet Affairs ACT0060 Inspector General ACT0070 Communications/Public Information ACT0080 Director of Administration ACT0090 Planning and Budgeting ACT0100 Finance and Accounting ACT0110 Personnel Services/Human Resources ACT0120 Training ACT0130 Mail Room ACT0140 Print Shop ACT0150 Records Management ACT0160 Supply Room ACT0170 Property Management ACT0180 Contract Administration ACT0190 Grants Management ACT0200 Procurement ACT0210 Fixed Capital Outlay ACT0300 IT - Executive Direction ACT0310 IT - Administrative Services

Identification of Associated Activities Contributing to Performance Measures

Exhibit V

Measure Number	Approved Performance Measures for FY 2008-09 (Words)	Associated Activities Title
		ACT0320 IT - Application Development/Support ACT0330 IT - Computer Operations ACT0340 IT - Network Operations ACT0350 IT - Desktop Support ACT0370 IT - Asset Acquisition ACT0400 Purchase of IT Services from the State Technology Office ACT0430 Payment of Pensions, Benefits and Claims ACT0370 IT - Asset Acquisition

Office of Policy and Budget – July, 2006

Identification of Associated Activities Contributing to Performance Measures

Exhibit V

Measure Number	Approved Performance Measures for FY 2008-09 (Words)	Associated Activities Title
Florida's Turnpike Enterprise Toll Operations		
27	Operational cost per toll transaction	ACT5600 Toll Operations
28	Operational cost per dollar collected	ACT5600 Toll Operations
29	Number of toll transactions	ACT5600 Toll Operations
30	Number of lane miles let to contract for resurfacing (Turnpike only)	ACT5060 Resurface Roads
31	Number of lane miles let to contract for highway capacity improvements (Turnpike only)	ACT5020 Intrastate Highways ACT5040 Arterial Highways
32	Number of bridges let to contract for repair (Turnpike only)	ACT5080 Repair and Replace Bridges
33	Lane miles maintained on the State Highway System (Turnpike only)	ACT5540 Routine Maintenance

Identification of Associated Activities Contributing to Performance Measures

Exhibit V

Measure Number	Approved Performance Measures for FY 2008-09 (Words)	Associated Activities Title
Executive Direction and Support Services		
34	Percent of agency administrative and support costs and positions compared to total agency costs and positions	ACT0010 Executive Direction ACT0020 General Counsel/Legal ACT0030 Legislative Affairs ACT0040 External Affairs ACT0050 Cabinet Affairs ACT0060 Inspector General ACT0070 Communications/Public Information ACT0080 Director of Administration ACT0090 Planning and Budgeting ACT0100 Finance and Accounting ACT0110 Personnel Services/Human Resources ACT0120 Training ACT0130 Mail Room ACT0140 Print Shop ACT0150 Records Management ACT0160 Supply Room ACT0170 Property Management ACT0180 Contract Administration ACT0190 Grants Management ACT0200 Procurement ACT0210 Fixed Capital Outlay ACT0300 IT - Executive Direction ACT0310 IT - Administrative Services

Identification of Associated Activities Contributing to Performance Measures

Exhibit V

Measure Number	Approved Performance Measures for FY 2008-09 (Words)	Associated Activities Title
		ACT0320 IT - Application Development/Support
		ACT0330 IT - Computer Operations
		ACT0340 IT - Network Operations
		ACT0350 IT - Desktop Support
		ACT0370 IT - Asset Acquisition
		ACT0400 Purchase of IT Services from the State Technology Office
		ACT0430 Payment of Pensions, Benefits and Claims
		ACT0370 IT - Asset Acquisition

Office of Policy and Budget – July, 2006

Agency-Level Unit Cost Summary
Exhibit VI

This page left blank intentionally.

Glossary of Terms and Acronyms

Glossary of Terms

2025 Florida Transportation Plan (FTP): A statewide plan that defines Florida's long range transportation goals and objectives at least through the year 2025.

Access Management: The control and regulation of the spacing and design of driveways, medians, median openings, traffic signals and intersections on arterial roads to improve safe and efficient traffic flow on the road system.

Activity: A unit of work which has identifiable starting and ending points, consumes resources, and produces outputs. Unit cost information is determined using the outputs of activities.

Actual Expenditures: Includes prior year actual disbursements, payables and encumbrances. The payables and encumbrances are certified forward at the end of the fiscal year. They may be disbursed between July 1 and September 30 of the subsequent fiscal year. Certified forward amounts are included in the year in which the funds are committed and not shown in the year the funds are disbursed.

Advance Acquisition: The acquisition of real property rights for use on a transportation corridor in advance of the fiscal year in which right of way acquisition would normally occur. This is done to take advantage of favorable prices or the availability of land and to preclude further development that would make the property more costly to the public.

Appropriation Category: The lowest level line item of funding in the General Appropriations Act which represents a major expenditure classification of the budget entity. Within budget entities, these categories may include: salaries and benefits, other personal services (OPS), expenses, operating capital outlay, data processing services, fixed capital outlay, etc. These categories are defined within this glossary under individual listings. For a complete listing of all appropriation categories, please refer to the ACTR section in the LAS/PBS User's Manual for instructions on ordering a report.

Baseline Data: Indicators of a state agency's current performance level, pursuant to guidelines established by the Executive Office of the Governor in consultation with legislative appropriations and appropriate substantive committees.

Budget Entity: A unit or function at the lowest level to which funds are specifically appropriated in the appropriations act. "Budget entity" and "service" have the same meaning.

Congestion: Highway congestion results when traffic demand approaches or exceeds the available capacity of the transportation facility(ies).

Glossary of Terms and Acronyms

Controlled Access Facility: A roadway where the spacing and design of driveways, medians, median openings, traffic signals and intersections are strictly regulated by consideration of such factors as traffic volume, number of lanes and adjacent land use.

D3-A: A legislative budget request (LBR) exhibit which presents a narrative explanation and justification for each issue for the requested years.

Demand: The number of output units which are eligible to benefit from a service or activity.

Demand Management: A set of strategies that promote increased efficiency of the transportation system by influencing individual travel behavior.

Ecosystem Management: An integrated, flexible approach to management of Florida's biological and physical environments conducted through the use of tools such as planning, land acquisition, environmental education and pollution prevention. This management approach is designed to maintain, protect and improve the State's natural, managed and human communities.

Estimated Expenditures: Includes the amount estimated to be expended during the current fiscal year. These amounts will be computer generated based on the current year appropriations adjusted for vetoes and special appropriations bills.

Federal-Aid Highway: Those highways eligible for assistance under Title 23 of the United States Code, which does not include those functionally classified as local or rural minor collectors.

Fixed Capital Outlay: Real property (land, buildings including appurtenances, fixtures and fixed equipment, structures, etc.), including additions, replacements, major repairs and renovations to real property which materially extend its useful life or materially improve or change its functional use, and including furniture and equipment necessary to furnish and operate a new or improved facility.

Florida Intrastate Highway System: A system of existing and future limited access and controlled access facilities which have the capacity to provide high-speed and high-volume traffic movements in an efficient and safe manner.

High-Occupancy Vehicle: Any vehicle carrying two or more passengers. The term usually refers to private vehicles.

Indicator: A single quantitative or qualitative statement that reports information about the nature of a condition, entity or activity. This term is used commonly as a synonym for the word "measure."

Glossary of Terms and Acronyms

Information Technology Resources: Includes data processing-related hardware, software, services, telecommunications, supplies, personnel, facility resources, maintenance and training.

Input: See Performance Measure.

Intelligent Transportation Systems: A wide range of advanced technologies and ideas, which, in combination, can improve mobility and transportation productivity, enhance safety, maximize the use of existing transportation facilities, conserve energy resources and reduce adverse environmental effects.

Intermodal: Relating to the connection between any two or more modes of transportation.

Judicial Branch: All officers, employees, and offices of the Supreme Court, district courts of appeal, circuit courts, county courts and the Judicial Qualifications Commission.

LAS/PBS: Legislative Appropriation System/Planning and Budgeting Subsystem. The statewide appropriations and budgeting system owned and maintained by the Executive Office of the Governor.

Legislative Budget Commission: A standing joint committee of the Legislature. The Commission was created to: review and approve/disapprove agency requests to amend original approved budgets; review agency spending plans; issue instructions and reports concerning zero-based budgeting; and take other actions related to the fiscal matters of the state, as authorized in statute. It is composed of 14 members appointed by the President of the Senate and by the Speaker of the House of Representatives to two-year terms, running from the organization of one Legislature to the organization of the next Legislature.

Legislative Budget Request: A request to the Legislature, filed pursuant to s. 216.023, Florida Statutes, or supplemental detailed requests filed with the Legislature, for the amounts of money an agency or branch of government believes will be needed to perform the functions that it is authorized, or which it is requesting authorization by law, to perform.

Level of Service: A qualitative assessment of a road's operating conditions. For local government comprehensive planning purposes, level of service means an indicator of the extent or degree of service provided by, or proposed to be provided by, a facility based on and related to the operational characteristics of the facility. Level of service indicates the capacity per unit of demand for each public facility.

Long Range Component: The long range part of the Florida Transportation Plan, updated at least every five years, or more often as needed, to reflect changes

Glossary of Terms and Acronyms

in issues and Florida's long range transportation goals and objectives for the ensuing 20 years.

Long-Range Program Plan: A plan developed on an annual basis by each state agency that is policy-based, priority-driven, accountable and developed through careful examination and justification of all programs and their associated costs. Each plan is developed by examining the needs of agency customers and clients and proposing programs and associated costs to address those needs based on state priorities as established by law, the agency mission and legislative authorization. The plan provides the framework and context for preparing the legislative budget request and includes performance indicators for evaluating the impact of programs and agency performance.

Metropolitan Planning Organization: An organization made up of local elected and appointed officials responsible for developing, in cooperation with the state, transportation plans and programs in metropolitan areas containing 50,000 or more residents. MPOs are responsible for the development of transportation facilities that will function as an intermodal transportation system and the coordination of transportation planning and funding decisions.

Mobility: The degree to which the demand for the movement of people and goods can be satisfied. Mobility is measured in Florida by the quantity, quality, accessibility and utilization of transportation facilities and services.

Mode: Any one of the following means of moving people or goods: aviation, bicycle, highway, paratransit, pedestrian, pipeline, rail (commuter, intercity passenger and freight), transit, space and water.

Multimodal Transportation: Denotes the use of more than one mode to serve transportation needs in a given area.

Narrative: Justification for each service and activity is required at the program component detail level. Explanation, in many instances, will be required to provide a full understanding of how the dollar requirements were computed.

Nonrecurring: Expenditure or revenue which is not expected to be needed or available after the current fiscal year.

Outcome: See Performance Measure.

Output: See Performance Measure.

Outsourcing: Means the process of contracting with vendor(s) to provide a service or an activity and there is a transfer of management responsibility for the delivery of resources and the performance of those resources. Outsourcing includes everything from contracting for minor administration tasks to contracting for major portions of activities or services which support the agency mission.

Glossary of Terms and Acronyms

Partners, Transportation: Those parties with interests in transportation facilities and services including the public, local governments, metropolitan planning organizations, public and private sector users and providers, Native American Nations, the Florida Department of Transportation and other federal and state agencies.

Pass Through: Funds the state distributes directly to other entities, e.g. local governments, without being managed by the agency distributing the funds. These funds flow through the agency's budget; however, the agency has no discretion regarding how the funds are spent, and the activities (outputs) associated with the expenditure of funds are not measured at the state level. **NOTE: This definition of "pass through" applies ONLY for the purposes of long-range planning.**

Percent of Standard: When used in reference to the Maintenance Program, this refers to the percentage of the acceptable department standard achieved. For the Maintenance Program, the "maintenance rating" goal is 80, and is based on the department's evaluation of its performance using the Maintenance Rating Program. If the department achieves a rating of 80, this is reported as achieving 100% of the standard.

Performance Ledger: The official compilation of information about state agency performance-based programs and measures, including approved programs, approved outputs and outcomes, baseline data, approved standards for each performance measure and any approved adjustments thereto, as well as actual agency performance for each measure

Performance Measure: A quantitative or qualitative indicator used to assess state agency performance.

- Input means the quantities of resources used to produce goods or services and the demand for those goods and services.
- Outcome means an indicator of the actual impact or public benefit of a service.
- Output means the actual service or product delivered by a state agency.

Policy Area: A grouping of related activities to meet the needs of customers or clients which reflects major statewide priorities. Policy areas summarize data at a statewide level by using the first two digits of the ten-digit LAS/PBS program component code. Data collection will sum across state agencies when using this statewide code.

Primary Service Outcome Measure: The service outcome measure which is approved as the performance measure which best reflects and measures the intended outcome of a service. Generally, there is only one primary service outcome measure for each agency service.

Glossary of Terms and Acronyms

Preservation: Actions taken to protect existing natural and human environments, investments and mobility options.

Privatization: Occurs when the state relinquishes its responsibility or maintains some partnership type of role in the delivery of an activity or service.

Program: A set of services and activities undertaken in accordance with a plan of action organized to realize identifiable goals and objectives based on legislative authorization (a program can consist of single or multiple services). For purposes of budget development, programs are identified in the General Appropriations Act by a title that begins with the word "Program." In some instances a program consists of several services, and in other cases the program has no services delineated within it; the service is the program in these cases. The LAS/PBS code is used for purposes of both program identification and service identification. "Service" is a "budget entity" for purposes of the LRPP.

Program & Resource Plan: A 10-year plan that establishes financial and production targets for Florida Department of Transportation programs, thereby guiding program funding decisions to carry out the goals and objectives of the FTP.

Program Purpose Statement: A brief description of approved program responsibility and policy goals. The purpose statement relates directly to the agency mission and reflects essential services of the program needed to accomplish the agency's mission.

Program Component: An aggregation of generally related objectives which, because of their special character, related workload and interrelated output, can logically be considered an entity for purposes of organization, management, accounting, reporting, and budgeting.

Reliability: The extent to which the measuring procedure yields the same results on repeated trials and data are complete and sufficiently error free for the intended use.

Service: See Budget Entity.

Standard: The level of performance of an outcome or output.

State Highway System: A network of approximately 12,000 miles of highways owned and maintained by the state or state-created authorities. Major elements include the Interstate, Florida's Turnpike and other toll facilities operated by transportation authorities, and arterial highways.

Transit: Mass transportation by bus, rail or other conveyance that provides general or special services to the public on a regular and continuing basis. Transit does not include school buses or charter or sightseeing services.

Glossary of Terms and Acronyms

Transportation Corridor: Any land area designated by the state, a county or a municipality which is between two geographic points and which area is used or is suitable for the movement of people and goods by one or more modes of transportation, including areas necessary for management of access and securing applicable approvals and permits.

Transportation Disadvantaged: Those persons who, because of disability, income status or age, are unable to transport themselves or to purchase transportation services.

Transportation Equity Act for the 21st Century: This act, signed as law on June 9, 1998, authorizes federal highway and transit programs for the fiscal years 1998 through 2003. Core federal programs established in the Intermodal Surface Transportation Efficiency Act of 1991 (ISTEA) are continued in TEA-21.

Transportation Management Association: An organization which helps solve transportation problems by encouraging businesses and governments to implement ridesharing and demand management strategies.

Tri-Rail: A commuter rail system in Southeast Florida operated by the Tri-County Commuter Rail Authority between West Palm Beach and Miami.

Unit Cost: The average total cost of producing a single unit of output – goods and services for a specific agency activity.

Validity: The appropriateness of the measuring instrument in relation to the purpose for which it is being used.

Vehicle Miles Traveled: On highways, a measurement of the total miles traveled in a given area for a specified time period. It is calculated by multiplying the number of vehicles by the miles traveled in a given area or on a given highway during the time period. In transit, it is calculated by multiplying the number of vehicles by the miles traveled on a given area or on a different route, line, or network during the time period.

Work Program: The five-year listing of all transportation projects planned for each fiscal year by the Florida Department of Transportation, as adjusted for the legislatively approved budget for the first year of the program.

Glossary of Terms and Acronyms

Acronyms

AADT	Annual average daily traffic
ADA	Americans with Disabilities Act
BEBR	Bureau of Economic and Business Research
CEI	Construction Engineering and Inspection
CIO	Chief Information Officer
CIP	Capital Improvements Program Plan
CITS	Consultant Invoice Transmittal System
CRS	Contract Reporting System
CTC	Community Transportation Coordinator
DBE	Disadvantaged Business Enterprise
DMS	Department of Management Services
DOT/FDOT	Florida Department of Transportation/Florida DOT
EOG	Executive Office of the Governor
ETDM	Efficient Transportation Decision Making
FAA	Federal Aviation Administration
FCO	Fixed Capital Outlay
FFMIS	Florida Financial Management Information System
FHP	Florida Highway Patrol
FIHS	Florida Intrastate Highway System
FLAIR	Florida Accounting Information Resource Subsystem
F.S.	Florida Statutes
FTP	Florida Transportation Plan

Glossary of Terms and Acronyms

GAA	General Appropriations Act
GR	General Revenue Fund
HOV	High-Occupancy Vehicle
IOE	Itemization of Expenditure
IT	Information Technology
ITS	Intelligent Transportation Systems
LAN	Local Area Network
LAS/PBS	Legislative Appropriations System/Planning and Budgeting Subsystem
LBC	Legislative Budget Commission
LBR	Legislative Budget Request
L.O.F.	Laws of Florida
LOS	Level of Service
LRPP	Long-Range Program Plan
MAN	Metropolitan Area Network (Information Technology)
MPO	Metropolitan Planning Organization
MRP	Maintenance Rating Program
NASBO	National Association of State Budget Officers
NEPA	The National Environmental Policy Act
OPB	Office of Policy and Budget, Executive Office of the Governor
OSHA	Occupational Safety and Health Administration
OTTED	Office of Tourism, Trade and Economic Development
PAVMARS	Pavement Management Reporting System
PBPB/PB2	Performance-Based Program Budgeting
PCS	Pavement Condition Survey

Glossary of Terms and Acronyms

P&RP	Program & Resource Plan
RCI	Roadway Characteristics Inventory
SA	Supplemental Agreement
SAFETEA-LU	Safe, Accountable, Flexible, Efficient Transportation Equity Act: A Legacy for Users
SHS	State Highway System
SIS	Strategic Intermodal System
STO	State Technology Office
SWOT	Strengths, Weaknesses, Opportunities and Threats
TCS	Trends and Conditions Statement
TEA-21	The Transportation Equity Act for the 21 st Century
TF	Trust Fund
TMA	Transportation Management Association
TRIP	Transportation Regional Incentive Program
TRW	Technology Review Workgroup
VMT/DVMT	Vehicle Miles of Travel/Daily VMT
WAGES	Work and Gain Economic Stability (Agency for Workforce Innovation)
WAN	Wide Area Network (Information Technology)
WPA	Work Program Administration
ZBB	Zero-Based Budgeting