



Kenneth S. Tucker  
Secretary

# FLORIDA DEPARTMENT OF CORRECTIONS

## INMATE ESCAPES

**Fiscal Year 2011-2012**



- Fiscal Year 2011-2012
  - Attempts
  - Escapes
  - Recaptures
- Short-term trends in Inmate Escapes
- Long-term trends in Inmate Escapes for Fiscal Years 1989-90 to 2011-12

Prepared by:  
**Florida Department of Corrections**  
Bureau of Research and Data Analysis  
Inmate Information and Analysis Section  
August 2012

## **Inmate Escape Report (Final Report for Fiscal Year 2011-12)**

This report provides information for Fiscal Year 2011-12 (July 2011 - June 2012) in reference to attempted escapes, escapes and recaptures from Florida's correctional facilities. This report summarizes the following:

- \* Attempted escapes
- \* Escapes by level, facility type, and facility type by region
- \* Recaptures, recaptures within quarter, by time to recapture, and time to recapture by facility type
- \* Escape rates and rates by region, and facility type by region
- \* Escapes by facility type, by month
- \* Escape rates by region, by quarter

For purposes of this report attempted escape and escape are defined as follows:

Attempted escape: Inmate is apprehended before completion of the escape act.

Escape: Unauthorized absence from the designated facility boundary or absence from any official assignment outside this boundary.

An escape is further defined as one of the following levels:

Level I: Escape from non-secure environment, such as a community correctional center or an outside work squad, in which no Level III behaviors are exhibited.

Level II: Escape from a secure perimeter in which no Level III behaviors are exhibited.

Level III: Escape that involves hostages, weapons/tools, outside assistance, or violence during or after the escape.

An escape rate is defined as the number of escapes/((total population on the last day of the month for each month in the quarter/3)\* 1,000.

A perimeter escape is defined as one initiated from inside the perimeter of a correctional facility other than a community release facility.

**Summary:**

The number of escapes increased from 167 in FY 2010-11 to 171 in FY 2011-12. Of the 171 escapes 2 escapes (1.2%) were from a major C.I. while on work detail outside the perimeter. 8 escapes (4.7%) were from a work camp / road prison while on work detail outside the perimeter. 161 of the 171 escapes (94.2%) were from work release / contract centers. 165 (96.5%) escapes were Level I escapes with no Level II escapes. 3 escapes (1.8%) were Level III and 3 escapes (1.8%) were undefined. There were no escapes in FY 2011-12 that constituted a breach of a secure perimeter.

Of the 171 completed escapes, 166 (97.1%) were recaptured to date of this report. 151 of the 166 recaptured, (91.0%) were recaptured within the same quarter as the escape. 105 (69.5%) of the 151 were recaptured within 24 hours of the escape.

The overall escape rate increased from 1.67 in FY 2010-11 to 1.73 in FY 2011-12. The escapes rate for correctional institutions was 0.02 and the escape rate for work camps / road prison was 0.69. Region I had the lowest overall rate per 1,000 inmates for the fiscal year at 0.52 whereas Region III had the highest at 4.12

There were 6 attempted escapes from Florida correctional facilities during Fiscal Year 2011-12.

## Escapes (July 2011 - June 2012)

Escapes*	1st Quarter (July-Sept 2011)		2nd Quarter (Oct-Dec 2011)		3rd Quarter (Jan-Mar 2012)		4th Quarter (Apr-Jun 2012)		Fiscal Year 2011/2012	
<b>Escapes</b>	<b>46</b>		<b>35</b>		<b>58</b>		<b>32</b>		<b>171</b>	
<b>Perimeter Escapes</b>	<b>0</b>		<b>0</b>		<b>0</b>		<b>0</b>		<b>0</b>	
<b>Escape Level</b>										
Level I	44	95.7%	34	97.1%	56	96.6%	31	96.9%	165	96.5%
Level II	0	0.0%	0	0.0%	0	0.0%	0	0.0%	0	0.0%
Level III	1	2.2%	1	2.9%	0	0.0%	1	3.1%	3	1.8%
Not Rated	1	2.2%	0	0.0%	2	3.4%	0	0.0%	3	1.8%
<b>Facility Type</b>										
Correctional Institutions	0	0.0%	0	0.0%	0	0.0%	2	6.3%	2	1.2%
Work Camps/Road Prisons	4	8.7%	1	2.9%	2	3.4%	1	3.1%	8	4.7%
Work Release/Contract Centers	42	91.3%	34	97.1%	56	96.6%	29	90.6%	161	94.2%
<b>Facility Type by Region</b>										
<b>Correctional Institutions</b>	<b>0</b>	<b>0.0%</b>	<b>0</b>	<b>0.0%</b>	<b>0</b>	<b>0.0%</b>	<b>2</b>	<b>6.3%</b>	<b>2</b>	<b>1.2%</b>
Region I	0	0.0%	0	0.0%	0	0.0%	1	50.0%	1	50.0%
Region II	0	0.0%	0	0.0%	0	0.0%	1	50.0%	1	50.0%
Region III	0	0.0%	0	0.0%	0	0.0%	0	0.0%	0	0.0%
Region IV	0	0.0%	0	0.0%	0	0.0%	0	0.0%	0	0.0%
<b>Work Camps/Road Prisons</b>	<b>4</b>	<b>8.7%</b>	<b>1</b>	<b>2.9%</b>	<b>2</b>	<b>3.4%</b>	<b>1</b>	<b>3.1%</b>	<b>8</b>	<b>4.7%</b>
Region I	4	100.0%	1	100.0%	0	0.0%	0	0.0%	5	62.5%
Region II	0	0.0%	0	0.0%	0	0.0%	1	100.0%	1	12.5%
Region III	0	0.0%	0	0.0%	0	0.0%	0	0.0%	0	0.0%
Region IV	0	0.0%	0	0.0%	2	100.0%	0	0.0%	2	25.0%
<b>Work Release/Contract Centers</b>	<b>42</b>	<b>91.3%</b>	<b>34</b>	<b>97.1%</b>	<b>56</b>	<b>96.6%</b>	<b>29</b>	<b>90.6%</b>	<b>161</b>	<b>94.2%</b>
Region I	4	9.5%	2	5.9%	3	5.4%	2	6.9%	11	6.8%
Region II	8	19.0%	7	20.6%	13	23.2%	3	10.3%	31	19.3%
Region III	14	33.3%	20	58.8%	22	39.3%	17	58.6%	73	45.3%
Region IV	16	38.1%	5	14.7%	18	32.1%	7	24.1%	46	28.6%

\*Numbers may differ from previous reports as facilities may change types across time and the number and level of escape may be updated upon receipt of further information.

## Recaptures (July 2011 - June 2012)

Recaptures**	1st Quarter (July-Sept 2011)		2nd Quarter (Oct-Dec 2011)		3rd Quarter (Jan-Mar 2012)		4th Quarter (Apr-Jun 2012)		Fiscal Year 2011/2012	
<b>Escapes</b>	<b>46</b>		<b>35</b>		<b>58</b>		<b>32</b>		<b>171</b>	
Recaptured	46	100.0%	34	97.1%	58	100.0%	28	87.5%	166	97.1%
Not Recaptured	0	0.0%	1	2.9%	0	0.0%	4	12.5%	5	2.9%
<b>Recaptured Within the Quarter</b>	<b>40</b>	<b>87.0%</b>	<b>32</b>	<b>94.1%</b>	<b>52</b>	<b>89.7%</b>	<b>27</b>	<b>96.4%</b>	<b>151</b>	<b>91.0%</b>
<b>Time to Recapture Within the Quarter</b>										
Less Than or Equal to 24 Hours	29	72.5%	24	75.0%	37	71.2%	15	55.6%	105	69.5%
Greater than 24 Hours	11	27.5%	8	25.0%	15	28.8%	12	44.4%	46	30.5%
<b>Recaptures by Facility Type Within Quarter</b>										
<b>Correctional Institutions</b>	<b>0</b>	<b>0.0%</b>	<b>0</b>	<b>0.0%</b>	<b>0</b>	<b>0.0%</b>	<b>1</b>	<b>3.7%</b>	<b>1</b>	<b>0.7%</b>
Less Than or Equal to 24 Hours	0	0.0%	0	0.0%	0	0.0%	1	100.0%	1	100.0%
Greater than 24 Hours	0	0.0%	0	0.0%	0	0.0%	0	0.0%	0	0.0%
<b>Work Camps/Road Prisons</b>	<b>4</b>	<b>10.0%</b>	<b>1</b>	<b>3.1%</b>	<b>2</b>	<b>3.8%</b>	<b>1</b>	<b>3.7%</b>	<b>8</b>	<b>5.3%</b>
Less Than or Equal to 24 Hours	4	100.0%	0	0.0%	2	100.0%	1	100.0%	7	87.5%
Greater than 24 Hours	0	0.0%	1	100.0%	0	0.0%	0	0.0%	1	12.5%
<b>Work Release/Contract Centers</b>	<b>36</b>	<b>90.0%</b>	<b>31</b>	<b>96.9%</b>	<b>50</b>	<b>96.2%</b>	<b>25</b>	<b>92.6%</b>	<b>142</b>	<b>94.0%</b>
Less Than or Equal to 24 Hours	25	69.4%	24	77.4%	35	70.0%	13	52.0%	97	68.3%
Greater than 24 Hours	11	30.6%	7	22.6%	15	30.0%	12	48.0%	45	31.7%

\*\* The Recaptured/Not Recaptured categories may change over time as past escapes are recaptured.

Breakdown of recaptured information is based on those captured within the quarter in which the escape occurred.

## Escape Rates (July 2011 - June 2012)

Escape Rates by Region***	1st Quarter (July-Sept 2011)	2nd Quarter (Oct-Dec 2011)	3rd Quarter (Jan-Mar 2012)	4th Quarter (Apr-Jun 2012)	Fiscal Year 2011/2012
<b>Escapes</b>	46	35	58	32	171
<b>Escape Rate</b>	0.46	0.35	0.59	0.32	1.73
<b>Escapes by Region</b>					
Region I	0.24	0.09	0.09	0.09	0.52
Region II	0.27	0.24	0.45	0.18	1.14
Region III	0.79	1.14	1.25	0.94	4.12
Region IV	0.81	0.26	1.04	0.37	2.48
<b>Facility Type by Region</b>					
<b>Correctional Institutions</b>	0.00	0.00	0.00	0.02	0.02
Region I	0.00	0.00	0.00	0.03	0.03
Region II	0.00	0.00	0.00	0.04	0.04
Region III	0.00	0.00	0.00	0.00	0.00
Region IV	0.00	0.00	0.00	0.00	0.00
<b>Work Camps/Road Prisons</b>	0.32	0.08	0.17	0.09	0.69
Region I	1.03	0.26	0.00	0.00	1.36
Region II	0.00	0.00	0.00	0.34	0.27
Region III	0.00	0.00	0.00	0.00	0.00
Region IV	0.00	0.00	1.00	0.00	1.01
<b>Work Release/Contract Centers</b>	10.91	9.04	14.93	7.94	42.89
Region I	13.38	6.73	10.07	7.49	37.90
Region II	15.18	13.59	23.17	5.19	56.85
Region III	7.81	11.42	12.46	9.68	41.32
Region IV	12.99	4.18	15.97	6.67	39.96

\*\*\*The escape rate is defined as the number of escapes/(total population on the last day of the month for each month in the quarter)/3)\*1,000.

## Escapes by Region/Facility (July 2011 - June 2012)

### *Region I*

Region/Institution	1st Quarter (Jul-Sep 2011)	2nd Quarter (Oct-Dec 2011)	3rd Quarter (Jan-Mar 2012)	4th Quarter (Apr-Jun 2012)	Fiscal Year 2011/2012
<b>Total Escapes</b>	46	35	58	32	171
<b>Region 1</b>	8	3	3	3	17
<b>Correctional Institutions</b>	0	0	0	1	1
101-Apalachee West CI					
102-Apalachee East CI					
103-Jefferson CI				1	1
104-Jackson CI					
105-Calhon CI					
106-Century CI					
107-Holmes CI					
108-Walton CI					
109-Gulf CI					
110-NWFRC Main Unit					
111-Gadsden CF (Private)					
112-Bay CF (Private)					
113-Franklin CI					
115-Okaloosa CI					
118-Wakulla CI					
119-Santa Rosa CI					
120-Liberty CI					
122-Wakulla Annex					
125-NWFRC Annex					
135-Santa Rosa Annex					
139-Quincy Annex (Liberty CI)					
150-Gulf CI Annex					
159-Graceville CF (Private)					
185-Blackwater River CF (Private)					
<b>Work Camps/Road Prisons</b>	4	1	0	0	5
114x-River Junction Work Camp					
121-Liberty Work Camp					
134x-Tallahassee Road Prison					
136x-Caryville Work Camp					
160-Graceville Work Camp		1			1
161-Okaloosa Work Camp	4				4
162-Holmes Work Camp					
165-Calhoun Work Camp					
166-Jackson Work Camp					
167-Century Work Camp					
170-Gulf Forestry Camp					
171-Bay City Work Camp					
172-Walton Work Camp					
173-Wakulla Work Camp					
177-Berrydale Forestry Camp					
<b>Work Release/Contract Centers</b>	4	2	3	2	11
163-Panama City WRC				1	1
164-Pensacola WRC	2				2
168-Tallahassee WRC	2	2	2	1	7
187-Shisa House West (Private)			1		1

x=closed

## Escapes by Region/Facility (July 2011 - June 2012)

### *Region II*

Region/Institution	1st Quarter (Jul-Sep 2011)	2nd Quarter (Oct-Dec 2011)	3rd Quarter (Jan-Mar 2012)	4th Quarter (Apr-Jun 2012)	Fiscal Year 2011/2012
<b>Total Escapes</b>	46	35	58	32	171
<b>Region 2</b>	8	7	13	5	33
<b>Correctional Institutions</b>	0	0	0	1	1
201-Columbia CI					
205-Florida State Prison Main Unit					
206-FSP West Unit				1	1
208-RMC West Unit					
209-RMC Main Unit					
210x-New River CI					
211-Cross City CI					
212x-Mayo CI					
213-Union CI					
214-Putnam CI					
215-Hamilton CI					
216-Madison CI					
218-Taylor CI					
219-Lake City CF (Private)					
223-Mayo CI Annex					
224-Taylor Annex					
230-Suwannee CI					
231-Suwannee Annex					
250-Hamilton CI Annex					
251-Columbia Annex					
255-Lawtey CI					
277x-Gainesville CI					
279-Baker CI					
281-Lancaster CI					
<b>Work Camps/Road Prisons</b>	0	0	0	1	1
204x-New River "O" Unit					
221-RMC Work Camp					
227-Taylor Work Camp					
232-Suwannee Work Camp					
240-Gainesville Work Camp					
261-Baker Work Camp					
262-Cross City Work Camp				1	1
263x-Hamilton Work Camp					
264x-Columbia Work Camp					
265-Mayo Work Camp					
280-Lancaster Work Camp					
289-Madison Work Camp					
<b>Work Release/Contract Centers</b>	8	7	13	3	31
243-Dinsmore WRC	4	5	11	1	21
249-Lake City WRC			1		1
266-Santa Fe WRC	2				2
267-Bridges of Jacksonville (Private)	2	2	1	2	7
278-Shisa House East (Private)					

x=closed



# Escapes by Region/Facility

## (July 2011 - June 2012)

### Region III

Region/Institution	1st Quarter (Jul-Sep 2011)	2nd Quarter (Oct-Dec 2011)	3rd Quarter (Jan-Mar 2012)	4th Quarter (Apr-Jun 2012)	Fiscal Year 2011/2012
<b>Total Escapes</b>	46	35	58	32	171
<b>Region 3</b>	14	20	22	17	73
<b>Correctional Institutions</b>	0	0	0	0	0
282-Tomoka CI					
304-Marion CI					
307-Sumter CI					
308-Sumter BTU Boot Camp					
310x-Brevard CI					
312-Lake CI					
314-Lowell CI Women's Unit					
320-Central Florida Reception Center Main					
321-Central Florida Reception Center East					
323-Central Florida Reception Center South					
336-Hernando CI					
366-Lowell CI Boot Camp					
367-Lowell Annex					
368-Lowell Reception Center					
503-Avon Park CI					
529x-Hillsborough CI					
573-Zephyrhills CI					
575x-Demilly CI					
580-Polk CI					
<b>Work Camps/Road Prisons</b>	0	0	0	0	0
284-Tomoka Work Camp					
287x-Levy Forestry Camp					
316-Lowell Work Camp					
363-Brevard Work Camp					
364-Marion Work Camp					
365-Sumter Work Camp					
504-Avon Park Work Camp					
552-Largo Road Prison					
562-Polk Work Camp					
<b>Work Release/Contract Centers</b>	14	20	22	17	73
242-Daytona WRC	2	2		1	5
285-Reality House (Private)					
341-Cocoa WRC					
345-Suncoast WRC Female (Private)	3			2	5
346x-Suncoast WRC Male (Private)					
351-Bridges of Orlando (Private)		2	7	3	12
352-Orlando Transition Center (Private)	1			1	2
353-Transition House Inc. Kissimmee (Private)	1	1		1	3
354-Largo Residential Re-Entry Center (Private)	4	6	11	6	27
355-Re-Entry Center of Ocala (Private)	1		1	1	3
361-Orlando WRC					
374-Kissimmee WRC			2	1	3
540-Bartow WRC					
554-Pinellas WRC		1			1
572-Tarpon Springs WRC		3			3
583-St. Petersburg WRC	2	5	1	1	9

x=closed

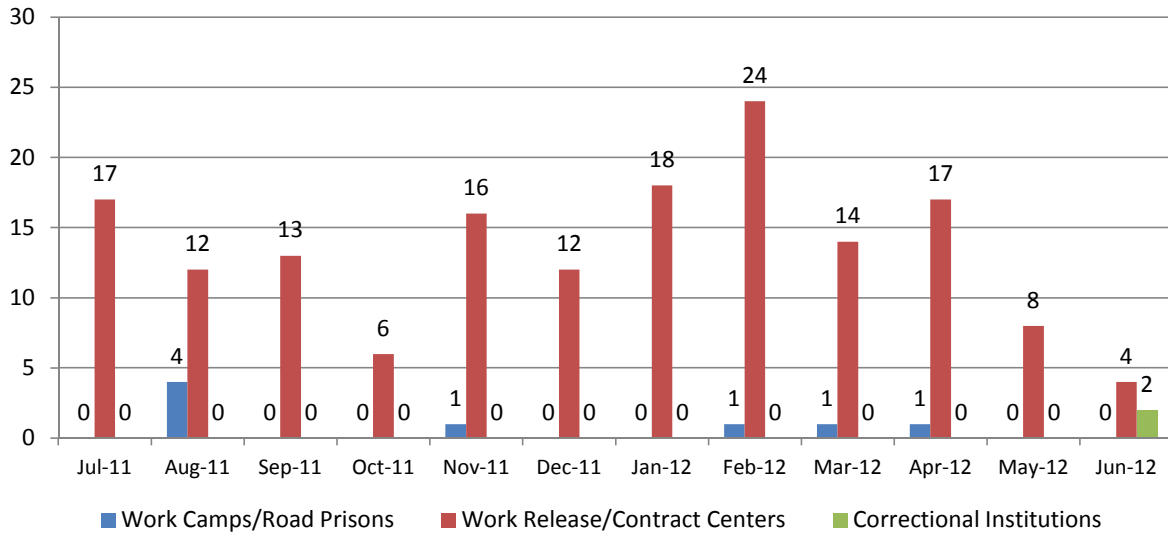
## Escapes by Region/Facility (July 2011 - June 2012)

### *Region IV*

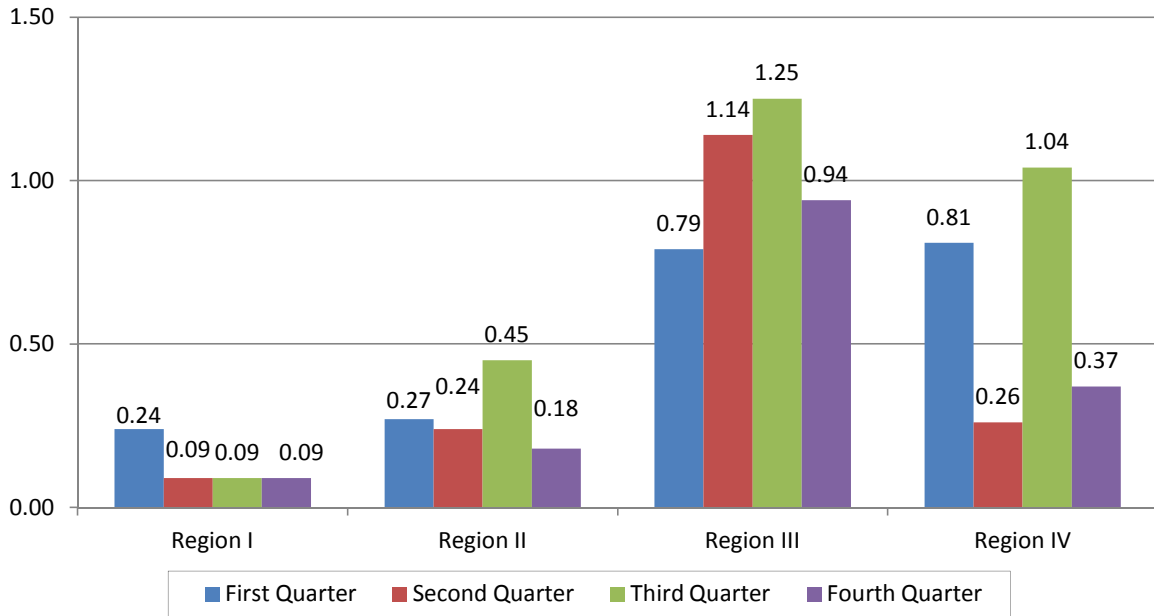
Region/Institution	1st Quarter (Jul-Sep 2011)	2nd Quarter (Oct-Dec 2011)	3rd Quarter (Jan-Mar 2012)	4th Quarter (Apr-Jun 2012)	Fiscal Year 2011/2012
<b>Total Escapes</b>	46	35	58	32	171
<b>Region 4</b>	16	5	20	7	48
<b>Correctional Institutions</b>	0	0	0	0	0
401-Everglades CI					
402-South Florida Reception Center Main					
403-SFRC South Unit					
404-Okceehobee CI					
405-South Bay CF (Private)					
406x-Glades CI					
418x-Indian River CI					
419-Homestead CI					
430-Martin CI					
463-Dade CI					
475x-Broward CI					
501-Hardee CI					
510-Charlotte CI					
511-Moore Haven CF (Private)					
564-DeSoto CI Annex					
576x-Hendry CI					
<b>Work Camps/Road Prisons</b>	0	0	2	0	2
420-Martin Work Camp					
426-Big Pine Key Road Prison					
431-Loxahatchee Road Prison					
462-Glades Work Camp					
464-Sago Palm Work Camp					
525-Arcadia Road Prison					
544-Ft. Myers Work Camp					
560-DeSoto Work Camp					
561x-Hendry Work Camp			2		2
563-Hardee Work Camp					
<b>Work Release/Contract Centers</b>	16	5	18	7	46
411-Pompano Transition Center (Private)	1			1	2
412-Bradenton Transition Center (Private)					
444-Ft. Pierce WRC					
446-Hollywood WRC		1			1
452-Atlantic WRC					
457-Miami North WRC	3	1	6	1	11
467-Bridges of Pompano WRC (Private)	8		5	4	17
469-West Palm WRC		1	3	1	5
473-Opa Locka WRC	4	2	4		10

x=closed

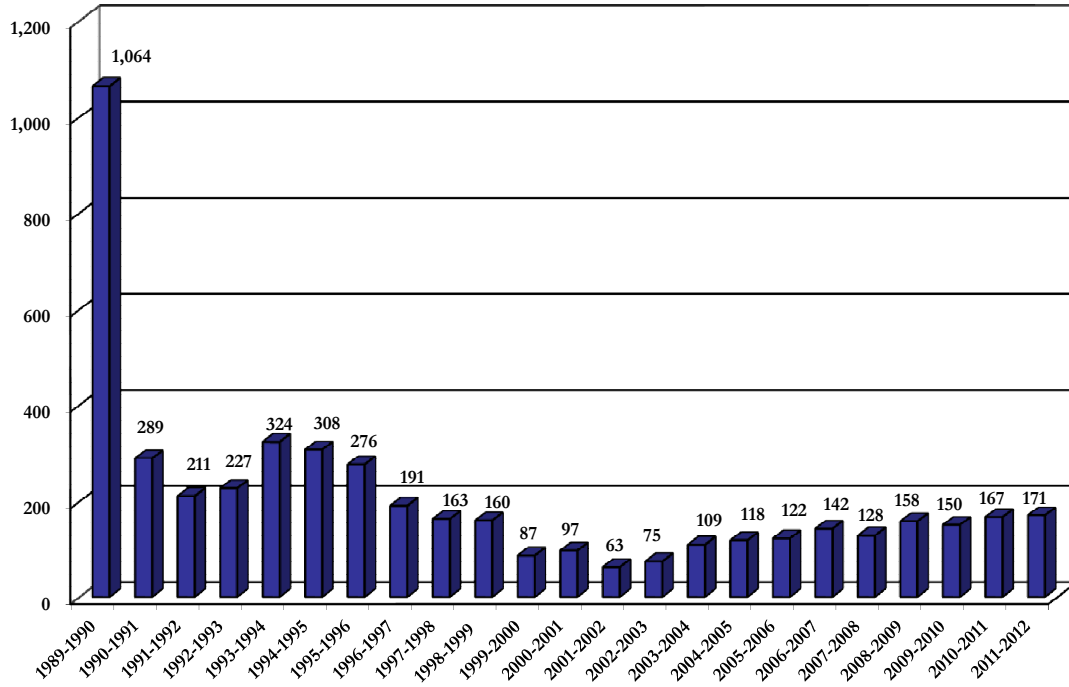
## Escapes by Facility Type, by Month July 2011 - June 2012



## Escape Rates by Region, by Quarter July 2011 - June 2012



## Total Escapes (FY 1989-1990 to FY 2011-2012)



**Historical Escape Rates (All Facilities)**  
(FY 1989-1990 to FY 2011-2012)

Fiscal Year	Number of Escapes	Average Inmate Population*	Escapes Per 1,000 Inmates
1989-1990	1,064	40,396	26.34
1990-1991	289	44,483	6.50
1991-1992	211	46,622	4.53
1992-1993	227	48,808	4.65
1993-1994	324	53,594	6.05
1994-1995	308	59,022	5.22
1995-1996	276	63,163	4.37
1996-1997	191	64,242	2.97
1997-1998	163	65,234	2.50
1998-1999	160	67,227	2.38
1999-2000	87	69,782	1.25
2000-2001	97	71,476	1.36
2001-2002	63	72,485	0.87
2002-2003	75	75,162	1.00
2003-2004	109	79,616	1.37
2004-2005	118	83,140	1.42
2005-2006	122	86,570	1.41
2006-2007	142	90,554	1.57
2007-2008	128	94,528	1.35
2008-2009	158	98,306	1.61
2009-2010	150	99,594	1.51
2010-2011	167	100,225	1.67
2011-2012	171	99,090	1.73

\*Inmate population average based on four quarters population on last day of each month/4.

**Escape Rates for Correctional Institutions**  
(FY 1993-1994 to FY 2011-2012)

Fiscal Year	Number of Escapes	Average Inmate Population*	Escapes Per 1,000 Inmates
1993-1994	56	42,355	1.30
1994-1995	37	47,266	0.78
1995-1996	13	50,006	0.26
1996-1997	9	53,670	0.19
1997-1998	8	54,573	0.15
1998-1999	4	56,135	0.07
1999-2000	9	58,607	0.15
2000-2001	4	60,268	0.07
2001-2002	2	60,813	0.03
2002-2003	1	62,957	0.02
2003-2004	3	67,018	0.04
2004-2005	8	70,546	0.11
2005-2006	1	73,240	0.01
2006-2007	1	76,600	0.01
2007-2008	0	80,477	0.00
2008-2009	1	83,483	0.01
2009-2010	1	83,922	0.01
2010-2011	2	84,127	0.02
2011-2012	2	83,681	0.02

\*Inmate population average based on four quarters population on last day of each month/4.

The Florida Department of Corrections  
Bureau of Research and Data Analysis  
Direct questions to David Ensley or Todd Gregory  
or email us at: [dcresearch@mail.dc.state.fl.us](mailto:dcresearch@mail.dc.state.fl.us)  
(850) 717-3647  
501 South Calhoun Street  
Tallahassee, Florida 32399-2500