

## Error processing SSI file

[Skip navigation.](#) Error processing SSI file

Florida's Criminal Punishment Code:

A Comparative Assessment (FY 2009-2010)

first | previous | 1 of 14 | [next](#)  
[subject index](#)

# Florida's Criminal Punishment Code: A Comparative Assessment, September 2010

A Report to the Florida Legislature  
Detailing Florida's Criminal Punishment Code



Florida's Criminal Punishment Code:  
.....A Comparative Assessment

## Table of Contents

### [Executive Summary](#)

#### I. Introduction

1. [Overview of Florida Sentencing Policies](#)
2. [Narrative on Introductory Statistics](#)
3. [Introductory Statistics](#)

#### II. Offense to Sentence Date Lag Time Comparison

1. [Narrative on the "Lag" Issue](#)
2. [Comparative Statistics](#)

#### III. Comparative Description

1. [Narrative on Comparative Statistics](#)
2. [Recommended Sanction and Sanction Imposed](#)
3. [Offense Type and Sanction Imposed](#)
4. [Offense Severity Levels](#)
5. [Prior and Additional Offenses](#)
6. [Mitigation](#)

## Appendices

[Total Admissions to Prison by County of Commitment](#)

[Offense Level Ranking Chart](#)

[Criminal Punishment Code Scoresheet](#)

Questions regarding this report should be directed to

[Research Manager](#)

Bureau of Research and Data Analysis

Florida Department of Corrections

2601 Blair Stone Road

Tallahassee, FL 32399

850-488-1801

Suncom 278-1801

[Download/view a PDF version of this publication  
formatted for printing. \(620K PDF File\)](#)

Florida's Criminal Punishment Code:  
A Comparative Assessment (FY 2009-2010)

first | previous | 1 of 14 | [next](#)  
[subject index](#)

## **Error processing SSI file**

## Error processing SSI file

[Skip navigation.](#) Error processing SSI file

Florida's Criminal Punishment Code:

A Comparative Assessment (FY 2009-2010)

[first](#) | [previous](#) | [2 of 14](#) | [next](#)

# Executive Summary

## Offenses Committed On or After October 1, 1998

In 1997, the Florida legislature created a new sentencing structure, the Florida Criminal Punishment Code ("Code"). The Code is Florida's primary sentencing policy. It is unique in that it has features of both structured and unstructured sentencing policies.

From a structured sentencing perspective, the Code provides for a uniform evaluation of relevant factors present at sentencing, such as the offense before the court for sentencing, prior criminal record, victim injury, and others. It also provides for a lowest permissible sentence that the court must impose in any given sentencing event, absent a valid reason for departure.

The Code also contains some characteristics of unstructured sentencing, such as broad judicial discretion and the allowance for the imposition of lengthy terms of incarceration.

The Code is effective for offenses committed on or after October 1, 1998 and is unlike the state's preceding sentencing guidelines, which provided for narrow ranges of permissible sentences in all non-capital sentencing events.

The intent of this report is to address the requirement set forth in Florida Statute 921.002(4)(a) to analyze sentencing events under the Florida Criminal Punishment Code. Each year, the Department of Corrections is required to report on trends in sentencing practices and sentencing score thresholds, and provide an analysis of the sentencing factors considered by the courts. **In this report, a comparison is made between the Criminal Punishment Code sentences received in FY 2008-2009 and FY 2009-2010.**

Since January 1, 1994, the Florida Department of Corrections has collected almost 1.9 million scoresheets on felony offenders sentenced in Florida courts under the state's Sentencing Guidelines and Criminal Punishment Code. This report describes the 113,643 Criminal Punishment Code scoresheets with sentence dates in FY 2009-2010 received by the Florida Department of Corrections through September 1, 2010, for felony offenses committed on or after October 1, 1998. It also compares 81,205 Criminal Punishment Code scoresheets received by the Florida Department of Corrections through September 1, 2010, for felony offenses committed on or after October 1, 2008 and sentence dates in Fiscal Year 2009-2010 with 90,171 Criminal Punishment Code scoresheets with offense dates on or after October 1, 2007 and sentence dates in Fiscal Year 2008-2009.

## Heggs V. State

In February 2000, the Florida Supreme Court, in its review of Curtis Leon Heggs, determined Chapter Law 95-184 to be unconstitutional due to a violation of the single subject rule of the Florida Constitution. This Chapter Law contained substantial changes in sentencing law commonly referred to as the "1995 Sentencing Guidelines."

In some cases, the 1995 Sentencing Guidelines provided for greater punishment than the 1994 Sentencing

Guidelines. Some enhancements were made to the Guidelines, designed primarily to target offenders with more serious current or prior criminal records. There were a significant number of changes and the nature of the changes had a significant effect on some offenders. However, many offenders sentenced under the 1995 Guidelines would have scored identically under the 1994 version of the law.

In May 2000, the Supreme Court revised and finalized their opinion in this case and further clarified who is eligible for re-sentencing. This decision stated that *"only those persons adversely affected by the amendments made by Chapter Law 95-184 may rely on our decision here to obtain relief. Stated another way, in the guidelines context, we determine that if a person's sentence imposed under the 1995 Guidelines could have been imposed under the 1994 Guidelines (without a departure), then that person shall not be entitled to relief."*

The Supreme Court declined to rule in Heggs as to when the window period closed for offenders claiming their guidelines sentences are invalid due to the amendments contained in Chapter Law 95-184. However, in its review of Xzavier Trapp, the Supreme Court determined that the window period for challenging the Sentencing Guidelines provisions amended in Chapter Law 95-184 opened on October 1, 1995 and closed on May 24, 1997.

Approximately 192,267 sentencing events occurred under the 1995 sentencing structure for offenses committed between October 1, 1995 and May 24, 1997, based on the Guidelines scoresheets received by the Department of Corrections through February 29, 2000. Original analysis indicated that 73,467 of these sentencing events evidenced scores adversely affected by the changes brought about in the 1995 guidelines. This analysis did not determine that the 1995 sentence was outside the range of the 1994 sentence, only that the scoresheet calculation reflected a difference in points.

Due to the potential number of re-sentencing events, it would be inaccurate to attempt to analyze and compare the 1995 sentencing guidelines to other versions of the sentencing scoresheet. As re-sentencing events occur, the original 1995 scoresheet will be replaced in the database with a 1994 scoresheet. This is necessary because the re-sentencing invalidates the original sentencing event. Likewise, the new sentence will overwrite the original sentence in DOC sentence structure and databases. A computerized record of the original sentence is not kept in the database that is used for data analysis.

As such, it is not possible to determine which scoresheets are the result of a re-sentencing or to verify that a re-sentencing event was a result of the Heggs ruling. Therefore, any analysis of this time period would yield a mixture of offenders sentenced under both the 1994 and 1995 guidelines.

**Because it is impossible to compare the Criminal Punishment Code to prior sentencing practices without going back to the 1994 Sentencing Guidelines, the data analysis in this report compares sentences received under the Criminal Punishment Code in FY 2008-2009 to those received in FY 2009-2010.**

### **Notes:**

**The sentencing scoresheet database is dynamic in that it is constantly being updated. Every effort is made to include scoresheets that are received; however, there is a lag in data entry. While this lag time is generally less than 45 days it may exceed this in some of the larger circuits. As such, as more time is allowed for the data to mature, a more accurate and complete picture of the data may be presented.**

## Error processing SSI file

[Skip navigation.](#) Error processing SSI file

Florida's Criminal Punishment Code:

A Comparative Assessment (FY 2009-2010)

[first](#) | [previous](#) | 3 of 14 | [next](#)

# Part I: Introduction Overview of Florida's Sentencing Policies

## History of Sentencing Policy

### Unstructured Sentencing

Prior to October 1, 1983, courts sentenced in accordance with the provisions of law that permitted a wide range of judicial discretion in the sentencing decision. Sanctions ranged from a fine up to state prison incarceration. The statutory maximum penalties of incarceration in state prison were:

- Five years for a felony of the third degree;
- Fifteen years for a felony of the second degree;
- Thirty years for a felony of the first degree, and;
- Life for a life felony.

This was a form of an indeterminate sentencing policy because most offenders sentenced to prison were, by law, parole eligible. Parole was a discretionary early release policy, which obviously had a significant impact upon both the percentage and the actual amount of time served.

### Structured Sentencing/Sentencing Guidelines

The Florida Sentencing Guidelines represent the state's structured policy with respect to the sentencing of non-capital felony offenders. There are three distinct versions of the guidelines currently in operation in Florida. They each:

- Provide for a uniform set of standards to guide the sentencing court in sentencing decisions;
- Evaluate relevant factors present at sentencing relating to the offense or offenses and the defendant's prior criminal behavior;
- Are attempts to provide for "truth in sentencing" and eliminate unwarranted disparity in sentencing decisions;
- Focus on ensuring that the punishment is commensurate with the offenses before the court for sentencing, and;
- Are mathematically based and provide a means to address several policy areas.

Every assessment of points reflects a policy statement regarding the relative severity of a criminal behavior. Each policy is represented on its respective scoresheet, which must be completed for each felony defendant prior to sentencing.

## The 1983 Sentencing Guidelines

Due to concerns regarding actual and percent of time served as well as concerns regarding a lack of uniformity in sentencing, the 1983 Florida Sentencing Guidelines were enacted October 1, 1983 and parole eligibility was abolished for almost all offenses committed after that date. These guidelines are currently in effect for all non-capital felony offenses that were committed on or after October 1, 1983 and before January 1, 1994.

The 1983 guideline structure was comprised of nine separate worksheets for specified offense categories such as murder, sexual offenses, drug offenses, etc. All offenses were contained in one of these categories.

Within each worksheet, points were assessed for offenses to be sentenced and prior record offenses based on the number of offenses and each offense's felony degree. Assessments were made for legal status and victim injury. Total scores fell into sentencing ranges or cells, for each worksheet. The least severe cell provided for a non-state prison sanction and the most severe cell provided for 27 years to life in prison. Departure sentences were permissible as long as written reasons were provided.

Several factors eventually eroded the integrity of the "truth in sentencing" aspect of the 1983 sentencing guidelines. Some of these factors included an epidemic of "crack" cocaine-related offense activity, which resulted in an unanticipated impact upon correctional resources, the passage of unfunded mandatory minimum sentence legislation, and significant growth in the population of the State of Florida.

As a result of these and other factors, the percentage of time served and actual time served declined. By 1989, the average percentage of time served was 34 percent. This lack of system integrity was the impetus for the creation of a new sentencing guideline structure.

## The 1994 Sentencing Guidelines

The 1994 sentencing guidelines were enacted through the passage of the "Safe Streets Act." These guidelines were created with the recognition that prison resources are finite and that the use of state incarceration should be focused upon offenders who commit serious or violent offenses, or who offend repetitively. The 1994 guidelines repealed the grant of basic gain time, evidencing the legislature's recommitment to "truth in sentencing." These sentencing guidelines are in effect for all non-capital felony offenses committed on or after January 1, 1994 and before October 1, 1995.

The structure of the 1994 sentencing guidelines has little similarity to the 1983 structure. The structure created attempted to resolve some of the problems inherent in the preceding structure, such as the nine separate worksheets, the lack of offense-specific detail and the issue of grouping crimes by category. The structure of the 1994 guidelines:

- Ranks all non-capital felonies in one of 10 offense severity levels. Level 1 is the least severe ranking and 10 reflects the most serious felonies.
- Each of the rankings has an associated point value in each of three elements subject to scoring: primary offense, additional offense(s), and prior record. Point values escalate as the rank increases.

Every offense scored is provided its corresponding point value in these areas, with the emphasis of points lying in the area of the primary offense.

- Includes other policy levels through an assessment of points for a variety of other factors such as: victim injury, legal status, supervision violations, and others.

Under the 1994 structure, the total guidelines score determines the sanction and a range of length of sanction when state prison is applicable. There are basically three categories of sanction based upon total scores. There are ranges of score which:

1. Mandate a non-state prison sanction when the total score is 40 points or less.
2. Provide for discretionary prison or non-state prison sanction when the total score is greater than forty and less than 52 points.
3. Mandate a state prison sanction when the total score exceeds 52 points.

The length of prison is determined by subtracting 28 from the total sentence points to derive the total prison months.

The court has the discretion to increase or decrease the sanction by 25%. This provided for a relatively narrow range for the imposition of a guideline sentence.

## The 1995 Sentencing Guidelines

The 1994 Sentencing Guidelines were significantly amended in 1995 through the passage of the Crime Control Act of 1995. The basic structure of the 1994 sentencing guidelines remained; however, point values were increased in a variety of areas and additional policy levers were created to provide for greater sanctions. The 1995 guidelines are in effect for offenses committed on or after October 1, 1995 through September 30, 1998.

The Higgs ruling stated that the use of the 1995 Sentencing Guidelines for offenses between October 1, 1995 and May 24, 1997 is unconstitutional. However, the 1995 Sentencing Guidelines are used for offense dates between May 25, 1997 and September 30, 1998.

The guidelines were slightly modified in both 1996 and 1997, again providing for increased sanctions and sanction length in certain instances.

## The Criminal Punishment Code

The Criminal Punishment Code became effective for offenses committed on or after October 1, 1998. The guidelines are repealed for all offenses committed on or after October 1, 1998 but remain in effect for offenses committed prior to this date. The Code contains features of both structured and unstructured sentencing policies. It maintains many of the goals of guidelines sentencing. Compared to the guidelines however, the Code allows for greater upward discretion in sentencing, provides for increased penalties, and lowers mandatory prison thresholds.

- The Code significantly alters the sentencing policy in a variety of respects. One of the most notable changes is the significant broadening of upward discretion in the sentencing policy. Under the sentencing guidelines, the upward discretion was 25 percent above the state prison months determined by the calculation. Under the Code, the maximum sentence for any felony offense is determined by the statutory maximums as provided in Florida Statute (F.S) 775.082.



### Felony Degree Years in Prison

Life Felony	Up to Life
1 <sup>st</sup>	Up to 30
2 <sup>nd</sup>	Up to 15
3 <sup>rd</sup>	Up to 5

- This has two effects that are divergent from the preceding guidelines. First, all felony offenders have the potential to receive a prison sentence, whereas many under the guidelines were by policy excluded from such a possibility. Second, the maximums of F. S. 775.082 usually will provide for far greater sentence lengths than were permissible under the guidelines.
- Another significant change is the determination when a prison sentence becomes mandatory under the new sentencing policy. The basic structure of the sentencing policy has not changed with respect to point determinations. Sentencing point thresholds for sentence calculations have, however, undergone significant revisions.
  1. If total points are equal to or less than 44, the lowest permissible sentence is a non-state prison sanction. (However, state prison up to the statutory maximum can be imposed.)
  2. If total points exceed 44, the minimum sentence is established by taking the total point value subtracting 28 and decreasing the remaining value by 25%. This end result value is the lowest permissible prison sentence in months.

This means that only those offenders scoring 44 or fewer points may receive a non- state prison sanction under the code. All others must receive a state prison sanction, absent downward departure from this structure. The threshold under the guidelines for mandatory prison incarceration was 52 points.

## Department of Corrections Responsibilities

The department was provided a variety of responsibilities regarding the sentencing policy with respect to the 1994 and subsequent versions of the law. Florida Statute 921 requires the department to:

- Develop the scoresheet and any revisions of the scoresheet for approval by the Supreme Court and supply Sentencing Guidelines and Criminal Punishment Code scoresheets to the appropriate criminal justice entities in the state;
- Prior to July 1, 2001, the Department had a coequal responsibility to prepare scoresheets with the state attorneys. However, the Department of Corrections continued to complete scoresheets which had been ordered by the courts prior to July 1, 2001. In addition there were transitional issues involved in transferring this responsibility to the state attorneys. This resulted in 9.7% of scoresheets received during FY2001-02 having been prepared by the Department of Corrections;
- Assist the Criminal Justice Estimating Conference in estimating correctional impact of proposed changes to the code;
- Provide the legislature by October 1 of each year a report detailing the rate of compliance of each



judicial circuit in providing scoresheets to the department; and,

- Provide the legislature an annual report detailing trends in sentencing and an analysis thereof by October 1 of each year.

## The SAGES (Sentencing Analysis and Guidelines Entry Systems) database

The department developed a database in 1994 to be used as a mechanism to allow for the storage of completed scoresheets and allow for more accurate, legible and efficient scoresheet preparation.

**This report is derived primarily from the information on sentencing scoresheets received by the department from the clerks of the courts and entered into SAGES.**

The following should be considered when evaluating this and other information derived from this database:

- The information is compiled from a database containing sentencing scoresheets received by the Department of Corrections for offenses with dates of commission on or after January 1, 1994. The information is based on the scoresheets in the database with dates of sentence in Fiscal Year 2009-2010 and offenses on or after October 1, 1998, entered as of September 1, 2010.
- Because the rate of scoresheet submissions is never 100%, there is always information missing that could potentially affect the analysis. When this report was run, the statewide compliance rate was 70.0% for Fiscal Year 2009-2010.
- **Though the Department retrieves and includes in the database omitted information from a scoresheet that is critical, no effort is made to correct preparation error or errors recorded on scoresheets regarding the sentence imposed. The department does not have the authority to amend an official court document. Conversely, there is a responsibility to record the information as received.**
- There is data entry error on the part of department staff. Recent analyses indicate that the rate of data entry error in the fields analyzed in the report is not significant.

## Error processing SSI file

### [Skip navigation.](#) Error processing SSI file

Florida's Criminal Punishment Code:

A Comparative Assessment (FY 2009-2010)

[first](#) | [previous](#) | [4 of 14](#) | [next](#)

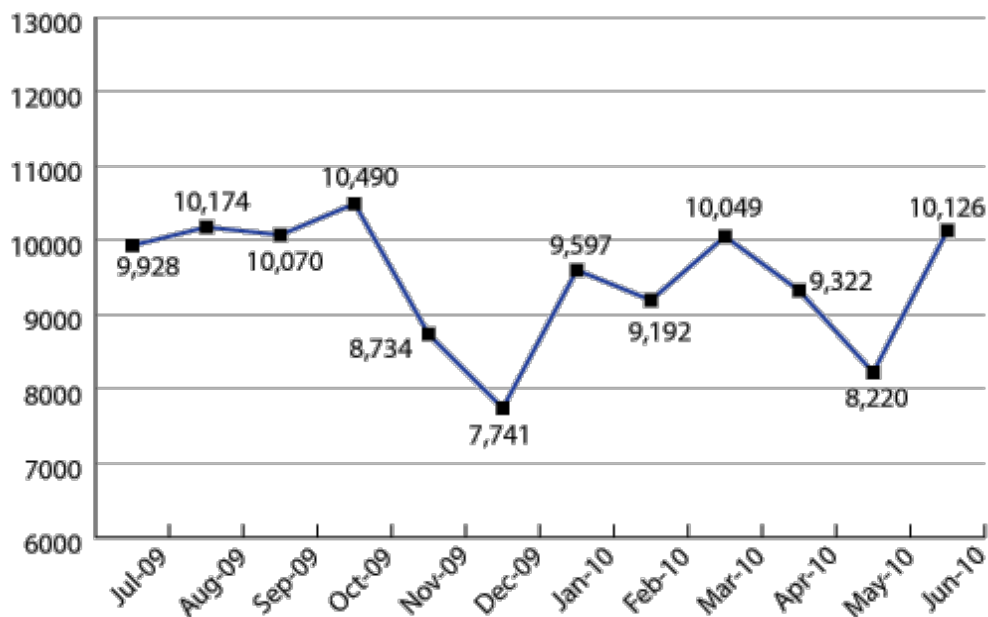
# Part I: Introductory Statistics

**FACT::** *There were 113,643 Punishment Code scoresheets with offense dates on or after October 1, 1998 with sentencing dates during FY2009-10 entered into the sentencing scoresheet database, as of September 1, 2010.*

## FINDINGS:

- The number of Code scoresheets received by month of sentence fluctuated from a high of 10,490 to a low of 7,741 from July 1, 2009 to June 30, 2010 ([Figure 1](#)).
- For the time period July 2009 through June 2010, Code scoresheets represent ninety-nine percent (99.8%) of the total scoresheet submissions. Throughout the fiscal year, more than ninety-nine percent of the scoresheets represented sentencing events under the Florida Criminal Punishment Code ([Table 2](#)).
- Thirty percent (30.2%) of the offenders sentenced under the Code were considered “youthful offenders” at the time of sentencing ([Table 3](#)). Of the 3,036 true juveniles (under 18 at the time of their offense) transferred to adult court under the Code, 1,152 (37.9%) of the offenders were age sixteen or younger ([Table 4](#)).
- There were 1,195 juveniles sentenced under the Code for violent offenses, including, murder/manslaughter, sex offenses, robbery, and other violent personal offenses. These violent offenses represent nearly forty percent (39.4%) of all offenses of juveniles ([Table 4](#)). Of the 1,195 violent juvenile offenders, 689 (57.7%) received a state prison sanction ([Table 5](#)).
- The gender and race distributions of offenders sentenced under the Code are similar to previous years sentencing events. Almost eighty percent (79.4%) of all scoresheets were for male offenders ([Table 6](#)) and 59.6% were for white offenders ([Table 7](#)).

## Figure 1 Scoresheets Received by Month of Sentence Criminal Punishment Code



**Table 1 Scoresheets Received by Circuit Criminal Punishment Code Fiscal Year 2009-2010**

Circuit of Sentence	Total	
	Number	Percent
01 (Pensacola)	6,215	5.5%
02 (Tallahassee)	2,310	2.0%
03 (Lake City)	1,295	1.1%
04 (Jacksonville)	5,249	4.6%
05 (Tavares)	6,814	6.0%
06 (Clearwater)	14,682	12.9%
07 (Daytona Beach)	4,721	4.2%
08 (Gainesville)	2,093	1.8%
09 (Orlando)	10,644	9.4%
10 (Bartow)	5,236	4.6%
11 (Miami)	8,383	7.4%
12 (Sarasota)	4,308	3.8%
13 (Tampa)	7,559	6.7%
14 (Panama City)	2,604	2.3%
15 (West Palm Beach)	4,822	4.2%
16 (Key West)	641	0.6%
17 (Ft. Lauderdale)	9,226	8.1%
18 (Sanford)	4,781	4.2%
19 (Ft. Pierce)	4,711	4.1%

20 (Ft. Myers)	7,349	6.5%
<b>Total</b>	<b>113,643</b>	<b>100.0%</b>

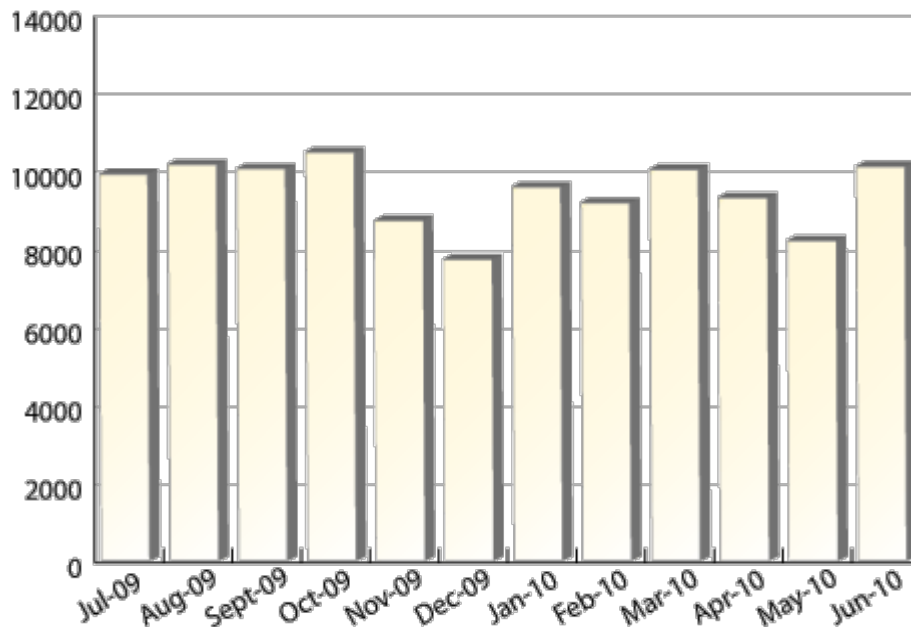
## Table 2 Sentencing Scoresheets Received by Month of Sentence\* Criminal Punishment Code Fiscal Year 2009-2010

Month of Sentence	1994 Sentencing Guidelines Scoresheet		1995 Sentencing Guidelines Scoresheet**		Criminal Punishment Code Scoresheet		Total	
July 2009	4	0.0%	20	0.2%	9,928	99.8%	9,952	8.7%
August 2009	9	0.1%	18	0.2%	10,174	99.7%	10,201	9.0%
September 2009	9	0.1%	17	0.2%	10,070	99.7%	10,096	8.9%
October 2009	6	0.1%	19	0.2%	10,490	99.8%	10,515	9.2%
November 2009	7	0.1%	12	0.1%	8,734	99.8%	8,753	7.7%
December 2009	5	0.1%	12	0.2%	7,741	99.8%	7,758	6.8%
January 2010	3	0.0%	25	0.3%	9,597	99.7%	9,625	8.5%
February 2010	4	0.0%	12	0.1%	9,192	99.8%	9,208	8.1%
March 2010	7	0.1%	11	0.1%	10,049	99.8%	10,067	8.8%
April 2010	5	0.1%	11	0.1%	9,322	99.8%	9,338	8.2%
May 2010	4	0.0%	12	0.1%	8,220	99.8%	8,236	7.2%
June 2010	7	0.1%	13	0.1%	10,126	99.8%	10,146	8.9%
<b>Total</b>	<b>70</b>	<b>0.1%</b>	<b>182</b>	<b>0.2%</b>	<b>113,643</b>	<b>99.8%</b>	<b>113,895</b>	<b>100.0%</b>

\* Total number of scoresheets, including those with offense dates between October 1, 1995 and May 24, 1997.

\*\* Offense dates between May 25, 1997 and September 30, 1998.

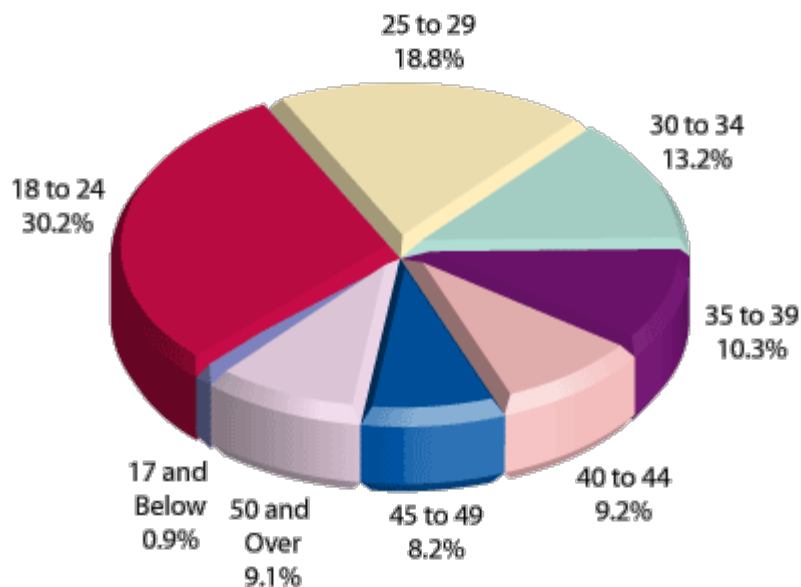
## Figure 2 Sentencing Scoresheets Received: 1994 SG vs. 1995 SG vs. Punishment Code Versions



**Table 3 Age at Sentencing Criminal Punishment Code Fiscal Year 2009-2010**

Age	Number	Percent
17 and Below	1,026	0.9%
18 to 24	34,365	30.2%
25 to 29	21,407	18.8%
30 to 34	15,008	13.2%
35 to 39	11,757	10.3%
40 to 44	10,469	9.2%
45 to 49	9,296	8.2%
50 and Over	10,311	9.1%
Unknown	4	
<b>Total</b>	<b>113,643</b>	<b>100.0%</b>

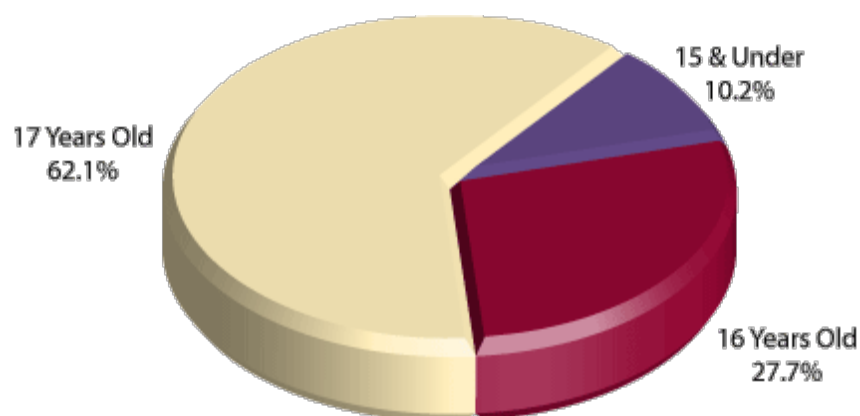
**Figure 3 Age at Sentencing Distribution Criminal Punishment Code**



**Table 4 Age at Offense for Offenders Under 18 Criminal Punishment Code Fiscal Year 2009-2010**

Primary Offense	15 & Under	16 Years Old	17 Years Old	Total
Murder/Manslaughter	18 5.8%	27 3.2%	38 2.0%	83 2.7%
Sexual Offenses	17 5.5%	27 3.2%	39 2.1%	83 2.7%
Robbery	91 29.4%	183 21.7%	310 16.5%	584 19.2%
Violent Personal Offenses	55 17.7%	115 13.7%	275 14.6%	445 14.7%
Burglary	68 21.9%	265 31.5%	617 32.7%	950 31.3%
Theft, Forgery, Fraud	26 8.4%	63 7.5%	199 10.6%	288 9.5%
Drugs	11 3.5%	69 8.2%	249 13.2%	329 10.8%
Weapons	6 1.9%	57 6.8%	107 5.7%	170 5.6%
Other Offenses	18 5.8%	36 4.3%	50 2.7%	104 3.4%
<b>Total</b>	<b>310</b> <b>100.0%</b>	<b>842</b> <b>100.0%</b>	<b>1,884</b> <b>100.0%</b>	<b>3,036</b> <b>100.0%</b>

## Figure 4 Age at Offense Distribution Offenders Under 18



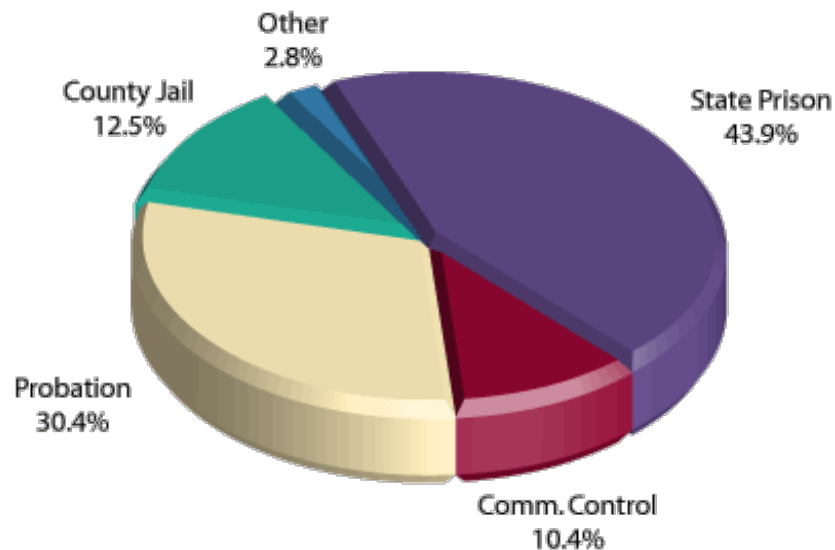
### Table 5 Sanction Imposed by Primary Offense For All 11 - 17 Year Olds Criminal Punishment Code Fiscal Year 2009-2010

Primary Offense	State Prison	Comm. Control	Probation	County Jail	Other	Total
Murder/Manslaughter	74 5.5%	4 1.3%	5 0.5%	0 0.0%	0 0.0%	83 2.7%
Sexual Offenses	54 4.0%	2 0.6%	19 2.1%	2 0.5%	6 7.1%	83 2.7%
Robbery	359 26.9%	63 19.9%	104 11.3%	41 10.8%	17 20.2%	584 19.2%
Violent Personal Offenses	202 15.1%	50 15.8%	132 14.3%	49 12.9%	12 14.3%	445 14.7%
Burglary	408 30.6%	122 38.6%	302 32.7%	91 24.0%	27 32.1%	950 31.3%
Theft, Forgery, Fraud	67 5.0%	25 7.9%	113 12.2%	75 19.8%	8 9.5%	288 9.5%
Drugs	74 5.5%	31 9.8%	148 16.0%	67 17.7%	9 10.7%	329 10.8%
Weapons	58 4.3%	13 4.1%	59 6.4%	36 9.5%	4 4.8%	170 5.6%
Other Offenses	38 2.8%	6 1.9%	41 4.4%	18 4.7%	1 1.2%	104 3.4%
<b>Total</b>	<b>1,334</b> <b>100.0%</b>	<b>316</b> <b>100.0%</b>	<b>923</b> <b>100.0%</b>	<b>379</b> <b>100.0%</b>	<b>84</b> <b>100.0%</b>	<b>3,036</b> <b>100.0%</b>

Note: County Jail includes those sentenced to time served; prison includes those sentenced to life.



## Figure 5 Sanction Imposed Distribution Offenders Under 18



## Table 6 Gender by Judicial Circuit Criminal Punishment Code Fiscal Year 2009-2010

Judicial Circuit	Gender				Total	
	Male		Female			
01 (Pensacola)	4,766	4.2%	1,449	1.3%	6,215	5.5%
02 (Tallahassee)	1,781	1.6%	529	0.5%	2,310	2.0%
03 (Lake City)	1,013	0.9%	282	0.2%	1,295	1.1%
04 (Jacksonville)	4,286	3.8%	963	0.8%	5,249	4.6%
05 (Tavares)	5,247	4.6%	1,567	1.4%	6,814	6.0%
06 (Clearwater)	10,807	9.5%	3,875	3.4%	14,682	12.9%
07 (Daytona Beach)	3,763	3.3%	958	0.8%	4,721	4.2%
08 (Gainesville)	1,677	1.5%	416	0.4%	2,093	1.8%
09 (Orlando)	8,850	7.8%	1,794	1.6%	10,644	9.4%
10 (Bartow)	4,091	3.6%	1,145	1.0%	5,236	4.6%
11 (Miami)	7,283	6.4%	1,100	1.0%	8,383	7.4%
12 (Sarasota)	3,285	2.9%	1,023	0.9%	4,308	3.8%
13 (Tampa)	6,170	5.4%	1,389	1.2%	7,559	6.7%
14 (Panama City)	2,013	1.8%	591	0.5%	2,604	2.3%
15 (West Palm Beach)	4,053	3.6%	769	0.7%	4,822	4.2%
16 (Key West)	518	0.5%	123	0.1%	641	0.6%
17 (Ft. Lauderdale)	7,462	6.6%	1,764	1.6%	9,226	8.1%
18 (Sanford)	3,770	3.3%	1,011	0.9%	4,781	4.2%

19 (Ft. Pierce)	3,549	3.1%	1,162	1.0%	4,711	4.1%
20 (Ft. Myers)	5,814	5.1%	1,535	1.4%	7,349	6.5%
<b>Total</b>	<b>90,198</b>	<b>79.4%</b>	<b>23,445</b>	<b>20.6%</b>	<b>113,643</b>	<b>100.0%</b>

## Table 7 Race by Judicial Circuit Criminal Punishment Code Fiscal Year 2009-2010

Judicial Circuit	Race						Total	
	Black		White		Other*			
01 (Pensacola)	2,387	2.1%	3,770	3.3%	58	0.1%	6,215	5.5%
02 (Tallahassee)	1,565	1.4%	723	0.6%	22	0.0%	2,310	2.0%
03 (Lake City)	508	0.4%	770	0.7%	17	0.0%	1,295	1.1%
04 (Jacksonville)	2,782	2.4%	2,409	2.1%	58	0.1%	5,249	4.6%
05 (Tavares)	1,903	1.7%	4,637	4.1%	274	0.2%	6,814	6.0%
06 (Clearwater)	3,869	3.4%	10,556	9.3%	257	0.2%	14,682	12.9%
07 (Daytona Beach)	1,521	1.3%	3,138	2.8%	62	0.1%	4,721	4.2%
08 (Gainesville)	1,094	1.0%	976	0.9%	23	0.0%	2,093	1.8%
09 (Orlando)	4,684	4.1%	5,883	5.2%	77	0.1%	10,644	9.4%
10 (Bartow)	1,811	1.6%	3,144	2.8%	281	0.2%	5,236	4.6%
11 (Miami)	4,382	3.9%	3,993	3.5%	8	0.0%	8,383	7.4%
12 (Sarasota)	1,110	1.0%	3,007	2.6%	191	0.2%	4,308	3.8%
13 (Tampa)	3,326	2.9%	3,721	3.3%	512	0.5%	7,559	6.7%
14 (Panama City)	697	0.6%	1,901	1.7%	6	0.0%	2,604	2.3%
15 (W. Palm Beach)	2,082	1.8%	2,718	2.4%	22	0.0%	4,822	4.2%
16 (Key West)	138	0.1%	475	0.4%	28	0.0%	641	0.6%
17 (Ft. Lauderdale)	4,853	4.3%	4,128	3.6%	245	0.2%	9,226	8.1%
18 (Sanford)	1,585	1.4%	3,069	2.7%	127	0.1%	4,781	4.2%
19 (Ft. Pierce)	1,426	1.3%	3,082	2.7%	203	0.2%	4,711	4.1%
20 (Ft. Myers)	1,710	1.5%	5,589	4.9%	50	0.0%	7,349	6.5%
<b>Total</b>	<b>43,433</b>	<b>38.2%</b>	<b>67,689</b>	<b>59.6%</b>	<b>2,521</b>	<b>2.2%</b>	<b>113,643</b>	<b>100.0%</b>

\*Other includes Asian, Native American and other categories.

**Error processing SSI file****[Skip navigation.](#) Error processing SSI file**

Florida's Criminal Punishment Code:

A Comparative Assessment (FY 2009-2010)

[first](#) | [previous](#) | 5 of 14 | [next](#)

# Part II: Offense to Sentence Date Lag Time Comparison

***FACT:** Scoresheets that have been received by the Department of Corrections for offenders sentenced under the Florida Criminal Punishment Code are not representative of the true impact of sentencing events under the Code.*

## FINDINGS:

- There were 81,205 scoresheets submitted to the Department of Corrections with sentence dates in FY2009-2010 and offense dates on or after October 1, 2008. The number of scoresheets submitted to the Department of Corrections with sentence dates in FY2008-2009 and offense dates on or after October 1, 2007 was 90,171.
- **Lag Time** - The average length of time that passes from the date an offender commits a crime to the date the offender is sentenced for that crime is 6.0 months for sentencing events in FY2009-2010 ([Table 1](#)).
- More serious and violent crimes typically have much longer lag time than the less serious property or drug crimes. A data file that is constrained by the date of offense must allow for enough time for the serious and violent crimes to be processed and convicted in order to represent a true distribution of sentencing events. The Florida Criminal Punishment Code went into effect for offenses committed on or after October 1, 1998. As of September 1, 2010, the Department of Corrections had received 1,899,968 Code scoresheets. However, because of the long lag time for serious offenses, the information to date is skewed more heavily by the less serious offenses.
- The average lag time for FY2008-2009 sentencing events is 5.9 months. When the lag times are examined by offense severity level and type of primary offense, the average lag time for level 10 offenses (most serious) was 9.8 months for sentencing events during FY2008-2009. In FY2009-2010, the average lag time for level 10 offenses was 10.4 months. Also, for murder/manslaughter, the average lag time from offense to sentence is 10.5 months for sentencing dates in FY2008-2009 and 11.0 months for FY2009-2010 ([Table 2](#)).
- Drug offenses comprised the largest group of scoresheets received in both FY2008-2009 (35.2%) and FY2009-2010 (35.0%) ([Table 3](#)).
- The more violent, serious offenses represented 15.6% of the scoresheets in FY2008-2009 and 17.0% in FY2009-2010 ([Table 3](#)).

## Table 1 Comparison of Average Time from Offense Date to

## Sentence Date by Offense Severity Level of Primary Offense, in Months

Offense Severity Level	FY2008-2009 Sentence Dates <sup>1</sup>	FY2009-2010 Sentence Dates <sup>2</sup>
1	5.3	5.1
2	6.0	6.1
3	5.2	5.3
4	5.8	5.8
5	6.2	6.3
6	6.6	6.6
7	7.4	7.4
8	8.5	8.5
9	9.1	9.3
10	9.8	10.4
<b>Overall Average</b>	<b>5.9</b>	<b>6.0</b>

<sup>1</sup> Offense dates on or after October 1, 2004.

<sup>2</sup> Offense dates on or after October 1, 2005.

## Table 2 Comparison of Average "Lag" Time from Offense Date to Sentence Date by Primary Offense, in Months

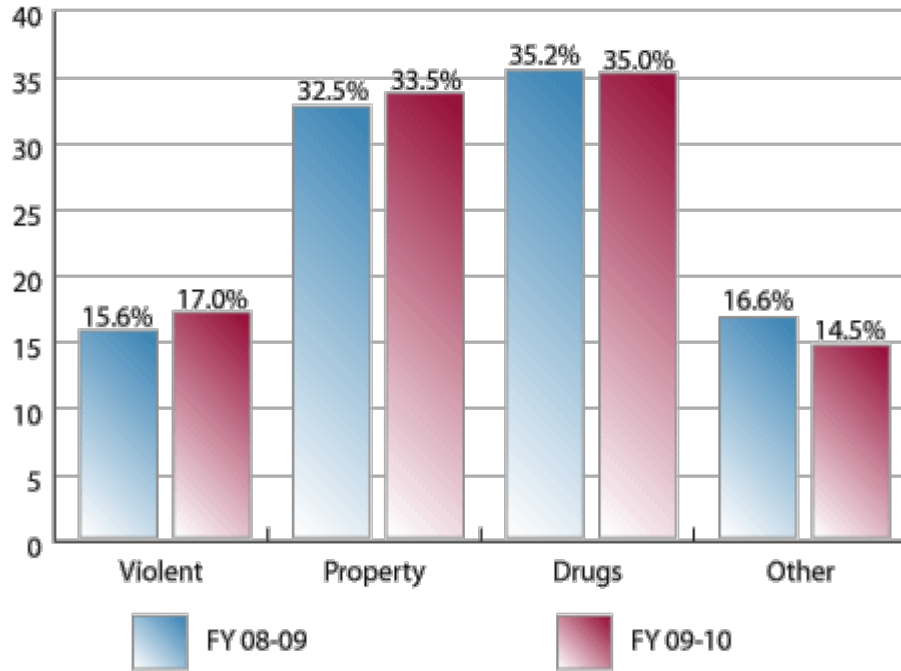
Primary Offense	FY2008-2009 Sentence Dates <sup>1</sup>	FY2009-2010 Sentence Dates <sup>2</sup>
Murder/Manslaughter	10.5	11.0
Sexual/Lewd Behavior	9.5	9.4
Robbery	7.5	7.6
Violent, Other	6.4	6.4
Burglary	6.1	6.3
Property Theft/Fraud/Damage	6.2	6.2
Drugs	5.5	5.6
Weapons	5.9	6.0
Other	5.4	5.2

**Overall Average**                      **5.9**                      **6.0**

<sup>1</sup> Offense dates on or after October 1, 2004.

<sup>2</sup> Offense dates on or after October 1, 2005.

**Figure 1 Distribution of Offense Group Sentence Dates in FY2008-2009 vs. FY2009-2010**



**Table 3 Distribution of Offense Sentence Dates FY 2008-2009 vs. Sentence Dates FY 2009-2010**

Primary Offense	FY2008-2009 Sentence Dates <sup>1</sup>	FY2009-2010 Sentence Dates <sup>2</sup>
Murder/Manslaughter	279	240
	0.3%	0.3%
Sexual Offenses	609	616
	0.7%	0.8%
Robbery	2,646	2,462
	2.9%	3.0%
Violent Personal Offenses	10,377	10,352
	11.5%	12.7%
Burglary	9,924	10,035
	11.0%	12.4%
	19,419	17,129

Theft/Forgery/Fraud	21.5%	21.1%
	31,750	28,445
Drugs	35.2%	35.0%
	2,760	2,512
Weapons	3.1%	3.1%
	12,407	9,414
Other	13.8%	11.6%
<b>Total</b>	<b>90,171</b>	<b>81,205</b>
	<b>100.0%</b>	<b>100.0%</b>

<sup>1</sup> Offense dates on or after October 1, 2007.

<sup>2</sup> Offense dates on or after October 1, 2008.

## Table 4 Distribution of Offense

Primary Offense	FY2008-2009 Sentence Dates <sup>1</sup>		FY2009-2010 Sentence Dates <sup>2</sup>	
<b>Murder/Manslaughter</b>	<b>279</b>	<b>0.3%</b>	<b>240</b>	<b>0.3%</b>
1st Degree Murder	50	0.1%	56	0.1%
2nd Degree Murder	99	0.1%	90	0.1%
3rd Degree Murder	8	0.0%	8	0.0%
Homicide, Other	5	0.0%	2	0.0%
Manslaughter	74	0.1%	40	0.0%
DUI Manslaughter	43	0.0%	44	0.1%
<b>Sexual Offenses</b>	<b>609</b>	<b>0.7%</b>	<b>616</b>	<b>0.8%</b>
Capital Sexual Battery	27	0.0%	32	0.0%
Life Sexual Battery	32	0.0%	31	0.0%
1st Degree Sexual Battery	27	0.0%	32	0.0%
2nd Degree Sexual Battery	96	0.1%	83	0.1%
Sexual Assault, Other	5	0.0%	7	0.0%
Lewd/Lascivious Behavior	422	0.5%	431	0.5%
<b>Robbery</b>	<b>2,646</b>	<b>2.9%</b>	<b>2,462</b>	<b>3.0%</b>
Robbery with Weapon	955	1.1%	947	1.2%
Robbery without Weapon	1,536	1.7%	1,382	1.7%
Home Invasion, Robbery	155	0.2%	133	0.2%
<b>Violent Personal Offenses</b>	<b>10,377</b>	<b>11.5%</b>	<b>10,352</b>	<b>12.7%</b>

Home Invasion, Other	104	0.1%	97	0.1%
Carjacking	1,474	1.6%	1,553	1.9%
Aggravated Assault	1,115	1.2%	1,076	1.3%
Aggravated Battery	1,269	1.4%	1,258	1.5%
Assault/Battery on L.E.O.	843	0.9%	954	1.2%
Assault/Battery, Other	174	0.2%	196	0.2%
Aggravated Stalking	1,503	1.7%	1,478	1.8%
Resisting Arrest with Violence	324	0.4%	304	0.4%
Kidnapping	150	0.2%	159	0.2%
Arson	901	1.0%	788	1.0%
Abuse of Children	2,041	2.3%	2,030	2.5%
Violent, Other	350	0.4%	364	0.4%
Leaving Accident, Injury/Death	95	0.1%	69	0.1%
DUI, Injury	34	0.0%	26	0.0%
<b>Burglary</b>	<b>9,924</b>	<b>11.0%</b>	<b>10,035</b>	<b>12.4%</b>
Burglary, Structure	5,812	6.4%	5,394	6.6%
Burglary, Dwelling	2,943	3.3%	3,580	4.4%
Burglary, Armed	246	0.3%	268	0.3%
Burglary with Assault	235	0.3%	233	0.3%
Burglary/Trespass, Other	688	0.8%	560	0.7%
<b>Theft/Forgery/Fraud</b>	<b>19,419</b>	<b>21.5%</b>	<b>17,129</b>	<b>21.1%</b>
Grand Theft, Other	7,671	8.5%	6,476	8.0%
Grand Theft, Automobile	1,813	2.0%	1,466	1.8%
Stolen Property	2,688	3.0%	2,661	3.3%
Forgery/Counterfeiting	2,937	3.3%	2,391	2.9%
Worthless Checks	281	0.3%	204	0.3%
Fraudulent Practices	2,245	2.5%	1,994	2.5%
Theft/Property Damage, Other	1,784	2.0%	1,937	2.4%
<b>Drugs</b>	<b>31,750</b>	<b>35.2%</b>	<b>28,445</b>	<b>35.0%</b>
Drugs, Manufacture/Sale/Purchase	9,463	10.5%	9,219	11.4%
Drugs, Trafficking	1,322	1.5%	1,381	1.7%
Drugs, Possession/Other	20,965	23.3%	17,845	22.0%
<b>Weapons</b>	<b>2,760</b>	<b>3.1%</b>	<b>2,512</b>	<b>3.1%</b>



Weapons, Discharging	247	0.3%	230	0.3%
Weapons, Possession	2,511	2.8%	2,282	2.8%
Weapons, Other	2	0.0%	0	0.0%
<b>Other</b>	<b>12,407</b>	<b>13.8%</b>	<b>9,414</b>	<b>11.6%</b>
Escape	2,484	2.8%	2,133	2.6%
DUI, No Injury	888	1.0%	782	1.0%
Traffic, Other	6,096	6.8%	3,696	4.6%
Racketeering	13	0.0%	9	0.0%
Pollution/Hazardous Materials	55	0.1%	54	0.1%
Criminal Justice System	2,343	2.6%	2,184	2.7%
Other	528	0.6%	556	0.7%
<b>Total</b>	<b>90,171</b>	<b>100.0%</b>	<b>81,205</b>	<b>100.0%</b>

<sup>1</sup> Offense dates on or after October 1, 2007.

<sup>2</sup> Offense dates on or after October 1, 2008.

Florida's Criminal Punishment Code:  
A Comparative Assessment (FY 2009-2010)

[first](#) | [previous](#) | [5 of 14](#) | [next](#)

**Error processing SSI file**

**Error processing SSI file**[Skip navigation.](#) **Error processing SSI file**

Florida's Criminal Punishment Code:

A Comparative Assessment (FY 2009-2010)

[first](#) | [previous](#) | 6 of 14 | [next](#)

## Part III: Comparative Description

**NOTES:** This section examines the sentencing parameters point values, as follows:

- The Criminal Punishment Code allows for a non-state prison sanction for offenders scoring 44.0 or less total points.
- The Code mandates state prison as the sanction, unless the sentence is mitigated, for all those offenders whose total points exceed 44.0.

This means that only those offenders scoring 44 or less points may receive a non-state prison sanction under the Code. All others must receive a state prison sanction, absent downward departure from this structure.

Florida Statute 921.0026 allows for circumstances or factors that reasonably justify the downward departure of Guidelines/Code scoresheet.

In addition, on January 24, 2002 the Supreme Court of Florida ruled in *Jones v. State* that Section 948.01(3) F.S. (supp. 1998), which allows for the sanction of drug offender probation in the case of a chronic substance abuser, provides an alternative sentencing scheme for drug offenders that is outside the Code. It was ruled that the trial court had the discretion to sentence the defendant to drug offender probation even though the Code mandated prison time.

Actual sanctions imposed, including state prison, community control, probation, county jail/time served, and other sanctions are presented and compared to the categories listed above.

**FINDINGS:**

- Across the state, 23.2% of offenders were sentenced to state prison as the most severe sanction in FY2009-2010. An additional 23.8% were sentenced to incarceration in county jail, or to time already served in jail. Five percent (5.4%) were sentenced to community control, and almost half to probation (46.9%), including drug offender probation, administrative probation, and regular probation. About one percent (0.8%) of offenders were sentenced to “other” sanctions. For sentencing dates in FY2008-2009, 21.9% of offenders were sentenced to state prison and 25.9% were sentenced to county jail or time served. Less than five percent (4.8%) were sentenced to community control, and 46.6% to probation. About one percent (0.8%) of the offenders were sentenced to “other” sanctions ([Table 1](#)).
- More than three-quarters of the 81,205 Code scoresheets with sentence date in FY2009-2010 examined (59,063 scoresheets or 72.7%) scored 44 points or less ([Table 1](#)). These scoresheets represent sentencing events where the judge has the discretion to sentence the offender to either a non-state prison sanction or a state prison sanction. If the judge chose to sentence the offender to state prison, the judge had the discretion to sentence the offender up to the statutory maximum of the law. For scoresheets with sentence dates in FY2008-2009, there were 68,339 (75.8%) offenders scoring 44 points or less ([Table 1](#)).

- For FY2009-2010, of the offenders scoring in the recommended state prison category, 60.8% were sentenced to state prison, with another 11.3% sentenced to county jail or time served. Of those scoring less than 44 points, 9.1 % were sentenced to state prison, and 28.4% to county jail/time served. For FY2008-2009, 61.3% of the offenders scoring above 44 points were sentenced to state prison and another 11.7% of these offenders were sentenced to county jail or time served. Of those scoring less than 44 points, 9.3% were sentenced to state prison, and 30.5% to county jail/time served. ([Table 1](#)).
- Scoresheets with a state prison sanction increased almost two percent from 21.9% in FY2008-2009 to 23.2% in FY2009-2010. County jail sanctions decreased from 25.9% in FY2008-2009 to 23.8% in FY2009-2010. Community Control sanctions increased from 4.8% in FY2008-2009 to 5.4% in FY2009-2010 ([Table 1](#)).
- Statewide, 71.6% of offenders (13,464 out of 18,818) receiving a prison sanction scored out to a prison sanction. [Table 2](#) presents the scoring distribution of offenders under the Code for FY2008-2009 and FY2009-2010 by circuit and sanction imposed. In FY2009-2010, Circuit 11 (Miami) had the highest percentage (92.6%) of prison sanctioned scoresheets with more than 44 points while Circuit 4 (Jacksonville) has the lowest (50.3%).
- Incarceration rates vary greatly by county and circuit. Jail sanctions also vary greatly depending on the number of beds available and judicial inclination to use the jail sanction. [Table 3](#) presents the distribution of sanction imposed by circuit and county. Although variance in sentencing does exist at the circuit and county level based on the judge involved, variability in the statistics presented in this table could also be as a result of differences in the type of offenders being sentenced around the state. There are also very small numbers of scoresheets for some of the counties listed in this table. The incarceration rates for counties with less than 100 scoresheets could possibly be misleading. ([Table 3](#)).
- In both FY2008-2009 and FY2009-2010 the majority of violent offenders received a state prison sanction ([Table 4](#)).
- As would be expected, scoresheets with the highest offense severity levels received a state prison sanction, those with the lowest received probation and community control fell in the middle with the majority having levels 3 through 6 ([Table 5](#)).
- Consistently in FY2008-2009 and FY2009-2010 , for offenders sentenced to state prison, the majority with offense severity levels of 1 through 6 received less than two years and those with offense level 10 received more than ten years ([Table 6](#)).
- From FY2008-2009 to FY2009-2010 the percentage of scoresheets with no prior record increased, with prior misdemeanors decreased, and with four to six or more felonies increased ([Table 7](#)).
- From FY2008-2009 to FY2009-2010 the percentage of scoresheets with no additional offenses decreased and those with misdemeanors decreased. The percentage with four or more felonies remained relatively constant ([Table 8](#)).
- Within the Code policy, a true mitigation occurs when an offenders scores more than 44 total points and either receives a non-state prison sanction (except drug offender probation) or a state prison sentence length below the 25% permissible discretion. Sanction mitigation occurs when an offender scores more than 44 total points, but receives a non-state prison sanction (except drug offender probation).

- The true mitigation rate for offenders that scored more than 44 total points is 55.5% for FY2008-2009 and 56.1% for FY2009-2010. The sanction mitigation rate (cases that scored to state prison but received a non-state prison sanction) was 37.8% for FY2008-2009 and 38.2% for FY2009-2010 ([Table 11](#)).
- For the offenders that received a mitigated prison sentence length, the average reduction in sentence was 23.0 months during FY2008-2009 and 24.7 months during FY2009-2010 ([Table 11](#)).
- Departure, as defined here, is not a comment on the legality of the sentence. There are many reasons for departure, which are recognized as legitimate under F. S. 921.0026. In addition, other Statutes, such as F. S. 948.034, establish special conditions allowing for departures from recommended sentences. Database limitations do not allow us to isolate all these reasons for departure.

### Table 1 Recommended Sanction Category by Sanction Imposed

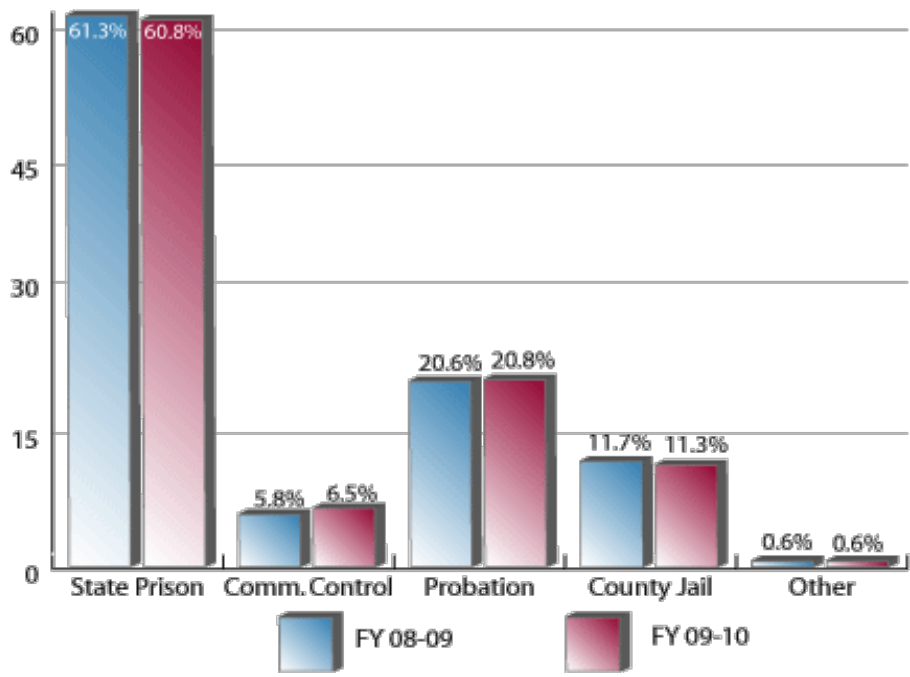
Sanction Imposed	Recommended Sanction Category							
	FY 2008-2009 Sentence Dates <sup>1</sup>				FY 2009-2010 Sentence Dates <sup>2</sup>			
	22.0 Points or Less	22.1 to 44.0 Points	More than 44.0 Points	Total	22.0 Points or Less	22.1 to 44.0 Points	More than 44.0 Points	Total
State Prison	1,204	5,164	13,374	<b>19,742</b>	875	4,479	13,464	<b>18,818</b>
	3.9%	13.9%	61.3%	<b>21.9%</b>	3.5%	13.3%	60.8%	<b>23.2%</b>
Community Control	871	2,162	1,277	<b>4,310</b>	768	2,161	1,440	<b>4,369</b>
	2.8%	5.8%	5.8%	<b>4.8%</b>	3.0%	6.4%	6.5%	<b>5.4%</b>
Probation	19,881	17,639	4,506	<b>42,026</b>	17,034	16,473	4,603	<b>38,110</b>
	63.9%	47.4%	20.6%	<b>46.6%</b>	67.2%	48.9%	20.8%	<b>46.9%</b>
County Jail	8,915	11,923	2,551	<b>23,389</b>	6,529	10,262	2,506	<b>19,297</b>
	28.7%	32.0%	11.7%	<b>25.9%</b>	25.8%	30.4%	11.3%	<b>23.8%</b>
Other	243	337	124	<b>704</b>	146	336	129	<b>611</b>
	0.8%	0.9%	0.6%	<b>0.8%</b>	0.6%	1.0%	0.6%	<b>0.8%</b>
<b>Total</b>	<b>31,114</b>	<b>37,225</b>	<b>21,832</b>	<b>90,171</b>	<b>25,352</b>	<b>33,711</b>	<b>22,142</b>	<b>81,205</b>
	<b>100.0%</b>	<b>100.0%</b>	<b>100.0%</b>	<b>100.0%</b>	<b>100.0%</b>	<b>100.0%</b>	<b>100.0%</b>	<b>100.0%</b>

\*Total points greater than 44.

<sup>1</sup> Offense dates on or after October 1, 2007.

<sup>2</sup> Offense dates on or after October 1, 2008.

### Figure 1 Sanction Imposed for Offenders Scoring in the State Prison Sanction Category\*



\*Total points greater than 44.

Florida's Criminal Punishment Code:  
A Comparative Assessment (FY 2009-2010)

[first](#) | [previous](#) | 6 of 14 | [next](#)

### Error processing SSI file

**Error processing SSI file**[Skip navigation.](#) Error processing SSI fileFlorida's Criminal Punishment Code:  
A Comparative Assessment (FY 2009-2010)[first previous](#) | [7 of 14](#) | [next](#)

# Part III: Comparative Description

**Table 2 Recommended Sanction Category by Sanction Imposed**

Judicial Circuit/ Sanction Imposed	Recommended Sanction Category											
	FY 2008-2009 Sentence Dates <sup>1</sup>						FY 2009-2010 Sentence Dates <sup>2</sup>					
	22.0 Points or Less		22.1 to 44.0 Points		More than 44.0 Points		22.0 Points or Less		22.1 to 44.0 Points		More than 44.0 Points	
<b>01 (Pensacola)</b>	<b>1,484</b>	<b>33.4%</b>	<b>1,842</b>	<b>41.5%</b>	<b>1,116</b>	<b>25.1%</b>	<b>1,324</b>	<b>31.7%</b>	<b>1,784</b>	<b>42.7%</b>	<b>1,071</b>	<b>25.6%</b>
Prison	78	7.9%	251	25.4%	658	66.7%	37	4.6%	191	23.6%	581	71.8%
Community Control	80	21.9%	190	51.9%	96	26.2%	87	21.0%	209	50.5%	118	28.5%
Probation	1,051	46.3%	973	42.8%	248	10.9%	923	44.7%	919	44.5%	223	10.8%
County Jail	221	31.8%	375	54.0%	99	14.2%	257	30.8%	440	52.8%	137	16.4%
Other	54	44.3%	53	43.4%	15	12.3%	20	35.1%	25	43.9%	12	21.1%
<b>02 (Tallahassee)</b>	<b>477</b>	<b>32.2%</b>	<b>572</b>	<b>38.6%</b>	<b>432</b>	<b>29.2%</b>	<b>384</b>	<b>26.0%</b>	<b>561</b>	<b>38.0%</b>	<b>533</b>	<b>36.1%</b>
Prison	11	3.4%	79	24.2%	236	72.4%	12	3.1%	60	15.7%	309	81.1%
Community Control	17	23.0%	34	45.9%	23	31.1%	8	11.4%	34	48.6%	28	40.0%
Probation	374	42.9%	352	40.4%	146	16.7%	297	37.5%	335	42.3%	160	20.2%
County Jail	71	35.9%	103	52.0%	24	12.1%	62	28.6%	124	57.1%	31	14.3%
Other	4	36.4%	4	36.4%	3	27.3%	5	27.8%	8	44.4%	5	27.8%
<b>03 (Lake City)</b>	<b>262</b>	<b>30.4%</b>	<b>352</b>	<b>40.8%</b>	<b>249</b>	<b>28.9%</b>	<b>214</b>	<b>27.1%</b>	<b>301</b>	<b>38.1%</b>	<b>276</b>	<b>34.9%</b>
Prison	27	9.5%	85	30.0%	171	60.4%	18	6.7%	60	22.3%	191	71.0%
Community Control	27	24.5%	55	50.0%	28	25.5%	16	13.2%	73	60.3%	32	26.4%
Probation	205	46.1%	196	44.0%	44	9.9%	178	46.0%	160	41.3%	49	12.7%
County Jail	2	11.8%	10	58.8%	5	29.4%	2	14.3%	8	57.1%	4	28.6%
Other	1	12.5%	6	75.0%	1	12.5%	0	0.0%	0	0.0%	0	0.0%
<b>04 (Jacksonville)</b>	<b>2,618</b>	<b>41.1%</b>	<b>2,441</b>	<b>38.3%</b>	<b>1,314</b>	<b>20.6%</b>	<b>1,252</b>	<b>29.0%</b>	<b>1,598</b>	<b>37.0%</b>	<b>1,465</b>	<b>34.0%</b>
Prison	233	11.1%	873	41.5%	997	47.4%	292	11.4%	979	38.3%	1,285	50.3%
Community Control	35	37.6%	40	43.0%	18	19.4%	18	34.6%	22	42.3%	12	23.1%
Probation	446	53.1%	308	36.7%	86	10.2%	254	47.6%	202	37.8%	78	14.6%
County Jail	1,900	57.0%	1,219	36.6%	212	6.4%	686	58.6%	394	33.7%	90	7.7%
Other	4	66.7%	1	16.7%	1	16.7%	2	66.7%	1	33.3%	0	0.0%
<b>05 (Tavares)</b>	<b>1,671</b>	<b>33.9%</b>	<b>2,162</b>	<b>43.9%</b>	<b>1,096</b>	<b>22.2%</b>	<b>1,436</b>	<b>29.2%</b>	<b>2,169</b>	<b>44.0%</b>	<b>1,320</b>	<b>26.8%</b>
Prison	78	7.1%	275	25.0%	748	67.9%	36	3.1%	212	18.1%	924	78.8%
Community Control	58	21.6%	159	59.3%	51	19.0%	52	19.3%	148	55.0%	69	25.7%
Probation	1,232	44.7%	1,274	46.3%	248	9.0%	1,035	41.0%	1,226	48.6%	264	10.5%
County Jail	279	38.0%	420	57.1%	36	4.9%	298	33.6%	541	61.0%	48	5.4%
Other	24	33.8%	34	47.9%	13	18.3%	15	20.8%	42	58.3%	15	20.8%
<b>06 (Clearwater)</b>	<b>3,295</b>	<b>33.6%</b>	<b>4,329</b>	<b>44.1%</b>	<b>2,190</b>	<b>22.3%</b>	<b>3,115</b>	<b>31.3%</b>	<b>4,581</b>	<b>46.0%</b>	<b>2,254</b>	<b>22.7%</b>
Prison	59	3.1%	337	17.7%	1,503	79.1%	48	2.4%	386	19.2%	1,574	78.4%

Community Control	73	18.9%	213	55.0%	101	26.1%	82	16.8%	310	63.4%	97	19.8%
Probation	2,121	47.0%	2,032	45.0%	361	8.0%	2,025	47.1%	1,913	44.5%	357	8.3%
County Jail	1,000	35.2%	1,651	58.2%	187	6.6%	929	31.3%	1,850	62.4%	187	6.3%
Other	42	23.9%	96	54.5%	38	21.6%	31	16.1%	122	63.5%	39	20.3%
<b>07 (Daytona)</b>	<b>1,331</b>	<b>33.8%</b>	<b>1,726</b>	<b>43.8%</b>	<b>882</b>	<b>22.4%</b>	<b>1,100</b>	<b>30.0%</b>	<b>1,617</b>	<b>44.1%</b>	<b>946</b>	<b>25.8%</b>
Prison	67	6.5%	375	36.5%	585	57.0%	25	3.0%	214	25.8%	589	71.1%
Community Control	55	27.6%	107	53.8%	37	18.6%	31	14.7%	132	62.6%	48	22.7%
Probation	878	48.7%	765	42.4%	160	8.9%	759	43.5%	793	45.5%	192	11.0%
County Jail	306	35.8%	454	53.2%	94	11.0%	279	32.9%	457	53.9%	112	13.2%
Other	25	44.6%	25	44.6%	6	10.7%	6	18.8%	21	65.6%	5	15.6%
<b>08 (Gainesville)</b>	<b>370</b>	<b>25.2%</b>	<b>546</b>	<b>37.2%</b>	<b>553</b>	<b>37.6%</b>	<b>441</b>	<b>29.1%</b>	<b>567</b>	<b>37.5%</b>	<b>506</b>	<b>33.4%</b>
Prison	14	3.5%	65	16.1%	324	80.4%	22	5.2%	87	20.5%	315	74.3%
Community Control	10	14.7%	26	38.2%	32	47.1%	12	16.0%	34	45.3%	29	38.7%
Probation	277	40.4%	287	41.9%	121	17.7%	315	45.1%	284	40.7%	99	14.2%
County Jail	62	22.5%	148	53.8%	65	23.6%	85	30.2%	146	52.0%	50	17.8%
Other	7	18.4%	20	52.6%	11	28.9%	7	19.4%	16	44.4%	13	36.1%
<b>09 (Orlando)</b>	<b>3,611</b>	<b>39.8%</b>	<b>3,738</b>	<b>41.2%</b>	<b>1,726</b>	<b>19.0%</b>	<b>2,502</b>	<b>34.6%</b>	<b>3,031</b>	<b>41.9%</b>	<b>1,708</b>	<b>23.6%</b>
Prison	85	5.4%	395	25.1%	1,093	69.5%	50	3.7%	274	20.1%	1,042	76.3%
Community Control	93	21.8%	219	51.4%	114	26.8%	76	21.2%	172	47.9%	111	30.9%
Probation	2,406	54.5%	1,660	37.6%	349	7.9%	1,643	47.7%	1,432	41.5%	372	10.8%
County Jail	1,006	38.5%	1,441	55.2%	164	6.3%	722	35.3%	1,144	56.0%	177	8.7%
Other	21	42.0%	23	46.0%	6	12.0%	11	42.3%	9	34.6%	6	23.1%
<b>10 (Bartow)</b>	<b>1,248</b>	<b>30.1%</b>	<b>1,839</b>	<b>44.4%</b>	<b>1,058</b>	<b>25.5%</b>	<b>938</b>	<b>27.8%</b>	<b>1,502</b>	<b>44.5%</b>	<b>934</b>	<b>27.7%</b>
Prison	67	5.4%	417	33.3%	768	61.3%	41	3.9%	289	27.8%	708	68.2%
Community Control	74	21.1%	194	55.3%	83	23.6%	49	19.9%	136	55.3%	61	24.8%
Probation	955	45.8%	960	46.1%	169	8.1%	707	42.8%	796	48.2%	149	9.0%
County Jail	151	33.6%	261	58.0%	38	8.4%	138	32.0%	277	64.3%	16	3.7%
Other	1	12.5%	7	87.5%	0	0.0%	3	42.9%	4	57.1%	0	0.0%
<b>11 (Miami)</b>	<b>1,684</b>	<b>27.1%</b>	<b>2,129</b>	<b>34.3%</b>	<b>2,394</b>	<b>38.6%</b>	<b>2,271</b>	<b>31.8%</b>	<b>2,242</b>	<b>31.4%</b>	<b>2,618</b>	<b>36.7%</b>
Prison	8	1.2%	40	5.8%	638	93.0%	11	1.5%	43	5.9%	673	92.6%
Community Control	6	3.3%	31	17.1%	144	79.6%	14	6.2%	41	18.1%	171	75.7%
Probation	967	39.1%	856	34.6%	653	26.4%	1,632	45.5%	1,187	33.1%	768	21.4%
County Jail	703	24.5%	1,202	42.0%	959	33.5%	614	23.7%	971	37.5%	1,006	38.8%
Other	0	0.0%	0	0.0%	0	0.0%	0	0.0%	0	0.0%	0	0.0%
<b>12 (Sarasota)</b>	<b>1,269</b>	<b>37.4%</b>	<b>1,477</b>	<b>43.6%</b>	<b>645</b>	<b>19.0%</b>	<b>1,189</b>	<b>38.2%</b>	<b>1,340</b>	<b>43.0%</b>	<b>587</b>	<b>18.8%</b>
Prison	28	4.2%	137	20.6%	499	75.2%	48	8.2%	155	26.4%	385	65.5%
Community Control	62	33.3%	90	48.4%	34	18.3%	67	30.3%	108	48.9%	46	20.8%
Probation	766	55.1%	567	40.8%	58	4.2%	671	52.1%	526	40.8%	91	7.1%
County Jail	413	35.9%	682	59.4%	54	4.7%	396	40.2%	530	53.8%	60	6.1%
Other	0	0.0%	1	100.0%	0	0.0%	7	21.2%	21	63.6%	5	15.2%
<b>13 (Tampa)</b>	<b>1,790</b>	<b>26.2%</b>	<b>2,696</b>	<b>39.5%</b>	<b>2,342</b>	<b>34.3%</b>	<b>1,277</b>	<b>23.6%</b>	<b>2,114</b>	<b>39.0%</b>	<b>2,031</b>	<b>37.5%</b>
Prison	69	4.2%	333	20.3%	1,240	75.5%	39	3.0%	236	17.9%	1,042	79.1%
Community Control	15	5.4%	89	31.8%	176	62.9%	17	5.1%	91	27.2%	227	67.8%



Probation	1,235	36.0%	1,530	44.7%	661	19.3%	935	33.9%	1,261	45.7%	562	20.4%
County Jail	449	31.3%	729	50.9%	255	17.8%	271	27.8%	513	52.6%	191	19.6%
Other	22	46.8%	15	31.9%	10	21.3%	15	40.5%	13	35.1%	9	24.3%
<b>14 (Panama City)</b>	<b>549</b>	<b>29.7%</b>	<b>841</b>	<b>45.5%</b>	<b>458</b>	<b>24.8%</b>	<b>401</b>	<b>22.6%</b>	<b>811</b>	<b>45.7%</b>	<b>562</b>	<b>31.7%</b>
Prison	40	6.8%	235	39.8%	316	53.5%	19	3.4%	166	29.5%	378	67.1%
Community Control	34	16.3%	133	63.6%	42	20.1%	31	17.1%	108	59.7%	42	23.2%
Probation	439	45.8%	442	46.1%	78	8.1%	342	34.7%	513	52.0%	131	13.3%
County Jail	35	43.2%	28	34.6%	18	22.2%	7	19.4%	21	58.3%	8	22.2%
Other	1	12.5%	3	37.5%	4	50.0%	2	25.0%	3	37.5%	3	37.5%
<b>15 (West Palm Beach)</b>	<b>1,445</b>	<b>34.7%</b>	<b>1,782</b>	<b>42.7%</b>	<b>943</b>	<b>22.6%</b>	<b>1,036</b>	<b>27.2%</b>	<b>1,701</b>	<b>44.7%</b>	<b>1,069</b>	<b>28.1%</b>
Prison	11	1.7%	111	16.9%	534	81.4%	5	0.6%	140	16.3%	714	83.1%
Community Control	5	12.2%	17	41.5%	19	46.3%	10	12.0%	36	43.4%	37	44.6%
Probation	461	36.4%	563	44.5%	241	19.1%	395	34.8%	559	49.2%	182	16.0%
County Jail	968	43.8%	1,091	49.4%	149	6.7%	625	36.3%	964	56.0%	133	7.7%
Other	0	0.0%	0	0.0%	0	0.0%	1	16.7%	2	33.3%	3	50.0%
<b>16 (Key West)</b>	<b>121</b>	<b>30.3%</b>	<b>191</b>	<b>47.8%</b>	<b>88</b>	<b>22.0%</b>	<b>116</b>	<b>29.4%</b>	<b>200</b>	<b>50.6%</b>	<b>79</b>	<b>20.0%</b>
Prison	1	3.1%	8	25.0%	23	71.9%	5	9.1%	15	27.3%	35	63.6%
Community Control	1	9.1%	6	54.5%	4	36.4%	3	18.8%	5	31.3%	8	50.0%
Probation	107	34.5%	150	48.4%	53	17.1%	85	32.8%	146	56.4%	28	10.8%
County Jail	11	26.2%	24	57.1%	7	16.7%	20	36.4%	29	52.7%	6	10.9%
Other	1	20.0%	3	60.0%	1	20.0%	3	30.0%	5	50.0%	2	20.0%
<b>17 (Ft. Lauderdale)</b>	<b>2,535</b>	<b>35.4%</b>	<b>2,907</b>	<b>40.6%</b>	<b>1,723</b>	<b>24.0%</b>	<b>2,069</b>	<b>32.4%</b>	<b>2,569</b>	<b>40.2%</b>	<b>1,756</b>	<b>27.5%</b>
Prison	52	3.9%	239	17.8%	1,050	78.3%	21	2.0%	167	15.8%	872	82.3%
Community Control	25	11.2%	95	42.4%	104	46.4%	24	8.5%	113	40.1%	145	51.4%
Probation	2,158	47.7%	1,874	41.5%	488	10.8%	1,774	44.2%	1,662	41.4%	580	14.4%
County Jail	289	28.0%	675	65.5%	67	6.5%	245	24.5%	604	60.5%	150	15.0%
Other	11	22.4%	24	49.0%	14	28.6%	5	13.5%	23	62.2%	9	24.3%
<b>18 (Sanford)</b>	<b>1,525</b>	<b>37.9%</b>	<b>1,735</b>	<b>43.1%</b>	<b>763</b>	<b>19.0%</b>	<b>1,152</b>	<b>33.2%</b>	<b>1,575</b>	<b>45.3%</b>	<b>746</b>	<b>21.5%</b>
Prison	35	4.5%	190	24.6%	546	70.8%	17	2.3%	196	27.1%	511	70.6%
Community Control	74	21.0%	202	57.2%	77	21.8%	47	14.1%	177	53.2%	109	32.7%
Probation	1,246	51.9%	1,027	42.8%	127	5.3%	963	48.3%	916	46.0%	114	5.7%
County Jail	169	33.9%	316	63.5%	13	2.6%	125	29.6%	286	67.6%	12	2.8%
Other	1	100.0%	0	0.0%	0	0.0%	0	0.0%	0	0.0%	0	0.0%
<b>19 (Ft. Pierce)</b>	<b>1,458</b>	<b>41.0%</b>	<b>1,396</b>	<b>39.3%</b>	<b>700</b>	<b>19.7%</b>	<b>1,233</b>	<b>39.0%</b>	<b>1,279</b>	<b>40.5%</b>	<b>647</b>	<b>0.0%</b>
Prison	183	14.7%	470	37.7%	594	47.6%	80	8.4%	362	37.9%	512	53.7%
Community Control	74	44.6%	73	44.0%	19	11.4%	57	36.5%	78	50.0%	21	13.5%
Probation	841	60.3%	495	35.5%	58	4.2%	739	57.2%	474	36.7%	79	6.1%
County Jail	345	48.5%	339	47.6%	28	3.9%	349	48.1%	345	47.5%	32	4.4%
Other	15	42.9%	19	54.3%	1	2.9%	8	25.8%	20	64.5%	3	9.7%
<b>20 (Ft. Myers)</b>	<b>2,371</b>	<b>39.2%</b>	<b>2,524</b>	<b>41.7%</b>	<b>1,160</b>	<b>19.2%</b>	<b>1,902</b>	<b>37.3%</b>	<b>2,168</b>	<b>42.5%</b>	<b>1,034</b>	<b>20.3%</b>
Prison	58	5.0%	249	21.5%	851	73.5%	49	4.4%	247	22.1%	824	73.6%
Community Control	53	16.7%	189	59.6%	75	23.7%	67	29.1%	134	58.3%	29	12.6%
Probation	1,716	53.6%	1,328	41.5%	157	4.9%	1,362	51.3%	1,168	44.0%	125	4.7%

County Jail	535	39.1%	755	55.2%	77	5.6%	419	38.3%	618	56.5%	56	5.1%
Other	9	75.0%	3	25.0%	0	0.0%	5	83.3%	1	16.7%	0	0.0%
<b>Statewide</b>	<b>31,114</b>	<b>100.0%</b>	<b>37,225</b>	<b>100.0%</b>	<b>21,832</b>	<b>100.0%</b>	<b>25,352</b>	<b>100.0%</b>	<b>33,710</b>	<b>100.0%</b>	<b>22,142</b>	<b>100.0%</b>

Note: County jail includes those sentenced to time served; prison includes those sentenced to life.

<sup>1</sup> Offense dates on or after October 1, 2007.

<sup>2</sup> Offense dates on or after October 1, 2008.

### Table 3 Sanction Imposed By Judicial Circuit and County

Circuit/County	FY2008-2009 Sentence Dates <sup>1</sup>						FY2009-2010 Sentence Dates <sup>2</sup>					
	State Prison	Comm. Control	Probation	County Jail	Other Sentence	Total	State Prison	Comm. Control	Probation	County Jail	Other Sentence	Total
<b>01 (Pensacola)</b>	<b>987</b>	<b>366</b>	<b>2,272</b>	<b>695</b>	<b>122</b>	<b>4,442</b>	<b>809</b>	<b>414</b>	<b>2,065</b>	<b>834</b>	<b>57</b>	<b>4,179</b>
	<b>22.2%</b>	<b>8.2%</b>	<b>51.1%</b>	<b>15.6%</b>	<b>2.7%</b>	<b>100.0%</b>	<b>19.4%</b>	<b>9.9%</b>	<b>49.4%</b>	<b>20.0%</b>	<b>1.4%</b>	<b>100.0%</b>
<b>02 (Tallahassee)</b>	<b>326</b>	<b>74</b>	<b>872</b>	<b>198</b>	<b>11</b>	<b>1,481</b>	<b>381</b>	<b>70</b>	<b>793</b>	<b>217</b>	<b>18</b>	<b>1,479</b>
	<b>22.0%</b>	<b>5.0%</b>	<b>58.9%</b>	<b>13.4%</b>	<b>0.7%</b>	<b>100.0%</b>	<b>25.8%</b>	<b>4.7%</b>	<b>53.6%</b>	<b>14.7%</b>	<b>1.2%</b>	<b>100.0%</b>
<b>03 (Lake City)</b>	<b>283</b>	<b>110</b>	<b>445</b>	<b>17</b>	<b>8</b>	<b>863</b>	<b>269</b>	<b>121</b>	<b>387</b>	<b>14</b>	<b>0</b>	<b>791</b>
	<b>32.8%</b>	<b>12.7%</b>	<b>51.6%</b>	<b>2.0%</b>	<b>0.9%</b>	<b>100.0%</b>	<b>34.0%</b>	<b>15.3%</b>	<b>48.9%</b>	<b>1.8%</b>	<b>0.0%</b>	<b>100.0%</b>
<b>04 (Jacksonville)</b>	<b>2,103</b>	<b>93</b>	<b>840</b>	<b>3,331</b>	<b>6</b>	<b>6,373</b>	<b>2,556</b>	<b>52</b>	<b>534</b>	<b>1,170</b>	<b>3</b>	<b>4,315</b>
	<b>33.0%</b>	<b>1.5%</b>	<b>13.2%</b>	<b>52.3%</b>	<b>0.1%</b>	<b>100.0%</b>	<b>59.2%</b>	<b>1.2%</b>	<b>12.4%</b>	<b>27.1%</b>	<b>0.1%</b>	<b>100.0%</b>
<b>05 (Tavares)</b>	<b>1,101</b>	<b>268</b>	<b>2,754</b>	<b>735</b>	<b>71</b>	<b>4,929</b>	<b>1,172</b>	<b>269</b>	<b>2,525</b>	<b>887</b>	<b>72</b>	<b>4,925</b>
	<b>22.3%</b>	<b>5.4%</b>	<b>55.9%</b>	<b>14.9%</b>	<b>1.4%</b>	<b>100.0%</b>	<b>23.8%</b>	<b>5.5%</b>	<b>51.3%</b>	<b>18.0%</b>	<b>1.5%</b>	<b>100.0%</b>
<b>06 (Clearwater)</b>	<b>1,899</b>	<b>387</b>	<b>4,514</b>	<b>2,838</b>	<b>176</b>	<b>9,814</b>	<b>2,008</b>	<b>489</b>	<b>4,295</b>	<b>2,966</b>	<b>192</b>	<b>9,950</b>
	<b>19.3%</b>	<b>3.9%</b>	<b>46.0%</b>	<b>28.9%</b>	<b>1.8%</b>	<b>100.0%</b>	<b>20.2%</b>	<b>4.9%</b>	<b>43.2%</b>	<b>29.8%</b>	<b>1.9%</b>	<b>100.0%</b>
<b>07 (Daytona)</b>	<b>1,027</b>	<b>199</b>	<b>1,803</b>	<b>854</b>	<b>56</b>	<b>3,939</b>	<b>828</b>	<b>211</b>	<b>1,744</b>	<b>848</b>	<b>32</b>	<b>3,663</b>
	<b>26.1%</b>	<b>5.1%</b>	<b>45.8%</b>	<b>21.7%</b>	<b>1.4%</b>	<b>100.0%</b>	<b>22.6%</b>	<b>5.8%</b>	<b>47.6%</b>	<b>23.2%</b>	<b>0.9%</b>	<b>100.0%</b>
<b>08 (Gainesville)</b>	<b>403</b>	<b>68</b>	<b>685</b>	<b>275</b>	<b>38</b>	<b>1,469</b>	<b>424</b>	<b>75</b>	<b>698</b>	<b>281</b>	<b>36</b>	<b>1,514</b>
	<b>27.4%</b>	<b>4.6%</b>	<b>46.6%</b>	<b>18.7%</b>	<b>2.6%</b>	<b>100.0%</b>	<b>28.0%</b>	<b>5.0%</b>	<b>46.1%</b>	<b>18.6%</b>	<b>2.4%</b>	<b>100.0%</b>
<b>09 (Orlando)</b>	<b>1,573</b>	<b>426</b>	<b>4,415</b>	<b>2,611</b>	<b>50</b>	<b>9,075</b>	<b>1,366</b>	<b>359</b>	<b>3,447</b>	<b>2,043</b>	<b>26</b>	<b>7,241</b>
	<b>17.3%</b>	<b>4.7%</b>	<b>48.7%</b>	<b>28.8%</b>	<b>0.6%</b>	<b>100.0%</b>	<b>18.9%</b>	<b>5.0%</b>	<b>47.6%</b>	<b>28.2%</b>	<b>0.4%</b>	<b>100.0%</b>
<b>10 (Bartow)</b>	<b>1,252</b>	<b>351</b>	<b>2,084</b>	<b>450</b>	<b>8</b>	<b>4,145</b>	<b>1,038</b>	<b>246</b>	<b>1,652</b>	<b>431</b>	<b>7</b>	<b>3,374</b>
	<b>30.2%</b>	<b>8.5%</b>	<b>50.3%</b>	<b>10.9%</b>	<b>0.2%</b>	<b>100.0%</b>	<b>30.8%</b>	<b>7.3%</b>	<b>49.0%</b>	<b>12.8%</b>	<b>0.2%</b>	<b>100.0%</b>
<b>11 (Miami)</b>	<b>686</b>	<b>181</b>	<b>2,476</b>	<b>2,864</b>	<b>0</b>	<b>6,207</b>	<b>727</b>	<b>226</b>	<b>3,587</b>	<b>2,591</b>	<b>0</b>	<b>7,131</b>
	<b>11.1%</b>	<b>2.9%</b>	<b>39.9%</b>	<b>46.1%</b>	<b>0.0%</b>	<b>100.0%</b>	<b>10.2%</b>	<b>3.2%</b>	<b>50.3%</b>	<b>36.3%</b>	<b>0.0%</b>	<b>100.0%</b>
<b>12 (Sarasota)</b>	<b>664</b>	<b>186</b>	<b>1,391</b>	<b>1,149</b>	<b>1</b>	<b>3,391</b>	<b>588</b>	<b>221</b>	<b>1,288</b>	<b>986</b>	<b>33</b>	<b>3,116</b>
	<b>19.6%</b>	<b>5.5%</b>	<b>41.0%</b>	<b>33.9%</b>	<b>0.0%</b>	<b>100.0%</b>	<b>18.9%</b>	<b>7.1%</b>	<b>41.3%</b>	<b>31.6%</b>	<b>1.1%</b>	<b>100.0%</b>
<b>13 (Tampa)</b>	<b>1,642</b>	<b>280</b>	<b>3,426</b>	<b>1,433</b>	<b>47</b>	<b>6,828</b>	<b>1,317</b>	<b>335</b>	<b>2,758</b>	<b>975</b>	<b>37</b>	<b>5,422</b>
	<b>24.0%</b>	<b>4.1%</b>	<b>50.2%</b>	<b>21.0%</b>	<b>0.7%</b>	<b>100.0%</b>	<b>24.3%</b>	<b>6.2%</b>	<b>50.9%</b>	<b>18.0%</b>	<b>0.7%</b>	<b>100.0%</b>
<b>14 (Panama City)</b>	<b>591</b>	<b>209</b>	<b>959</b>	<b>81</b>	<b>8</b>	<b>1,848</b>	<b>563</b>	<b>181</b>	<b>986</b>	<b>36</b>	<b>8</b>	<b>1,774</b>
	<b>32.0%</b>	<b>11.3%</b>	<b>51.9%</b>	<b>4.4%</b>	<b>0.4%</b>	<b>100.0%</b>	<b>31.7%</b>	<b>10.2%</b>	<b>55.6%</b>	<b>2.0%</b>	<b>0.5%</b>	<b>100.0%</b>
<b>15 (West Palm Beach)</b>	<b>656</b>	<b>41</b>	<b>1,265</b>	<b>2,208</b>	<b>0</b>	<b>4,170</b>	<b>859</b>	<b>83</b>	<b>1,136</b>	<b>1,722</b>	<b>6</b>	<b>3,806</b>
	<b>15.7%</b>	<b>1.0%</b>	<b>30.3%</b>	<b>52.9%</b>	<b>0.0%</b>	<b>100.0%</b>	<b>22.6%</b>	<b>2.2%</b>	<b>29.8%</b>	<b>45.2%</b>	<b>0.2%</b>	<b>100.0%</b>
<b>16 (Key West)</b>	<b>32</b>	<b>11</b>	<b>310</b>	<b>42</b>	<b>5</b>	<b>400</b>	<b>55</b>	<b>16</b>	<b>259</b>	<b>55</b>	<b>10</b>	<b>395</b>
	<b>8.0%</b>	<b>2.8%</b>	<b>77.5%</b>	<b>10.5%</b>	<b>1.3%</b>	<b>100.0%</b>	<b>13.9%</b>	<b>4.1%</b>	<b>65.6%</b>	<b>13.9%</b>	<b>2.5%</b>	<b>100.0%</b>

<b>17 (Ft. Lauderdale)</b>	<b>1,341</b>	<b>224</b>	<b>4,520</b>	<b>1,031</b>	<b>49</b>	<b>7,165</b>	<b>1,060</b>	<b>282</b>	<b>4,016</b>	<b>999</b>	<b>37</b>	<b>6,394</b>
	<b>18.7%</b>	<b>3.1%</b>	<b>63.1%</b>	<b>14.4%</b>	<b>0.7%</b>	<b>100.0%</b>	<b>16.6%</b>	<b>4.4%</b>	<b>62.8%</b>	<b>15.6%</b>	<b>0.6%</b>	<b>100.0%</b>
<b>18 (Sanford)</b>	<b>771</b>	<b>353</b>	<b>2,400</b>	<b>498</b>	<b>1</b>	<b>4,023</b>	<b>724</b>	<b>333</b>	<b>1,993</b>	<b>423</b>	<b>0</b>	<b>3,473</b>
	<b>19.2%</b>	<b>8.8%</b>	<b>59.7%</b>	<b>12.4%</b>	<b>0.0%</b>	<b>100.0%</b>	<b>20.8%</b>	<b>9.6%</b>	<b>57.4%</b>	<b>12.2%</b>	<b>0.0%</b>	<b>100.0%</b>
<b>19 (Ft. Pierce)</b>	<b>1,247</b>	<b>166</b>	<b>1,394</b>	<b>712</b>	<b>35</b>	<b>3,554</b>	<b>954</b>	<b>156</b>	<b>1,292</b>	<b>726</b>	<b>31</b>	<b>3,159</b>
	<b>35.1%</b>	<b>4.7%</b>	<b>39.2%</b>	<b>20.0%</b>	<b>1.0%</b>	<b>100.0%</b>	<b>30.2%</b>	<b>4.9%</b>	<b>40.9%</b>	<b>23.0%</b>	<b>1.0%</b>	<b>100.0%</b>
<b>20 (Ft. Myers)</b>	<b>1,158</b>	<b>317</b>	<b>3,201</b>	<b>1,367</b>	<b>12</b>	<b>6,055</b>	<b>1,120</b>	<b>230</b>	<b>2,655</b>	<b>1,093</b>	<b>6</b>	<b>5,104</b>
	<b>19.1%</b>	<b>5.2%</b>	<b>52.9%</b>	<b>22.6%</b>	<b>0.2%</b>	<b>100.0%</b>	<b>21.9%</b>	<b>4.5%</b>	<b>52.0%</b>	<b>21.4%</b>	<b>0.1%</b>	<b>100.0%</b>
<b>Statewide</b>	<b>19,742</b>	<b>4,310</b>	<b>42,026</b>	<b>23,389</b>	<b>704</b>	<b>90,171</b>	<b>18,818</b>	<b>4,369</b>	<b>38,110</b>	<b>19,297</b>	<b>611</b>	<b>81,205</b>
	<b>21.9%</b>	<b>4.8%</b>	<b>46.6%</b>	<b>25.9%</b>	<b>0.8%</b>	<b>100.0%</b>	<b>23.2%</b>	<b>5.4%</b>	<b>46.9%</b>	<b>23.8%</b>	<b>0.8%</b>	<b>100.0%</b>

Note: County jail includes those sentenced to time served; prison includes those sentenced to life.

<sup>1</sup> Offense dates on or after October 1, 2007.

<sup>2</sup> Offense dates on or after October 1, 2008.

Florida's Criminal Punishment Code:  
A Comparative Assessment (FY 2009-2010)

[first](#) | [previous](#) | [7 of 14](#) | [next](#)

**Error processing SSI file**

**Error processing SSI file**[Skip navigation.](#) **Error processing SSI file**

Florida's Criminal Punishment Code:

[first](#) | [previous](#) | 8 of 14 | [next](#)

A Comparative Assessment (FY 2009-2010)

# Part III: Comparative Description

**Table 4 Offense Types by Sanction Imposed**

Offense Type	FY2008-2009 Sentence Dates <sup>1</sup>						FY2009-2010 Sentence Dates <sup>2</sup>					
	State Prison	Comm. Control	Probation	County Jail	Other	Total	State Prison	Comm. Control	Probation	County Jail	Other	Total
<b>Murder/Manslaughter</b>												
Attempt	86	1	7	1	0	<b>95</b>	77	4	7	1	0	<b>89</b>
Complete	160	6	18	0	0	<b>184</b>	140	4	7	0	0	<b>151</b>
<b>Sexual/Lewd Behavior</b>												
Attempt	45	4	8	0	0	<b>57</b>	63	1	10	0	0	<b>74</b>
Complete	367	35	135	11	4	<b>552</b>	351	28	151	10	2	<b>542</b>
<b>Robbery</b>												
Attempt	195	25	109	46	2	<b>377</b>	161	25	85	34	2	<b>307</b>
Complete	1,323	168	561	208	9	<b>2,269</b>	1,308	185	463	186	13	<b>2,155</b>
<b>Violent,Other</b>												
Attempt	30	6	43	5	0	<b>84</b>	34	3	29	7	0	<b>73</b>
Complete	2,681	587	5,307	1,640	78	<b>10,293</b>	2,681	603	5,280	1,646	69	<b>10,279</b>
<b>Burglary</b>												
Attempt	136	28	168	59	2	<b>393</b>	190	27	238	74	3	<b>532</b>
Complete	3,099	635	4,180	1,546	71	<b>9,531</b>	3,385	795	3,913	1,345	65	<b>9,503</b>
<b>Property Theft/Fraud/Damage</b>												
Attempt	4	1	19	4	0	<b>28</b>	5	5	14	4	0	<b>28</b>
Complete	2,881	807	10,713	4,780	210	<b>19,391</b>	2,618	748	9,307	4,261	167	<b>17,101</b>
<b>Drugs</b>												
Attempt	105	24	302	240	3	<b>674</b>	110	35	255	150	3	<b>553</b>
Complete	5,603	1,216	14,098	9,947	212	<b>31,076</b>	5,068	1,277	13,284	8,062	201	<b>27,892</b>
<b>Weapons</b>												
Attempt	4	2	10	4	0	<b>20</b>	1	3	5	2	0	<b>11</b>
Complete	810	164	1,209	543	14	<b>2,740</b>	837	138	1,075	434	17	<b>2,501</b>
<b>Other</b>												
Attempt	12	4	42	18	0	<b>76</b>	13	2	29	17	0	<b>61</b>
Complete	2,201	597	5,097	4,337	99	<b>12,331</b>	1,776	486	3,958	3,064	69	<b>9,353</b>

**Total 19,742 4,310 42,026 23,389 704 90,171 18,818 4,369 38,110 19,297 611 81,205**

Note: County jail includes those sentenced to time served; prison includes those sentenced to life.

<sup>1</sup> Offense dates on or after October 1, 2007.

<sup>2</sup> Offense dates on or after October 1, 2008.

Florida's Criminal Punishment Code:  
A Comparative Assessment (FY 2009-2010)

[first](#) | [previous](#) | 8 of 14 | [next](#)

**Error processing SSI file**

**Error processing SSI file**[Skip navigation.](#) Error processing SSI file

Florida's Criminal Punishment Code:

A Comparative Assessment (FY 2009-2010)

[first](#) | [previous](#) | 9 of 14 | [next](#)

## Part III: Comparative Description

**Table 5 Sanction Imposed by Offense Severity Level**

Offense Severity Level	FY2008-2009 Sentence Dates <sup>1</sup>						FY2009-2010 Sentence Dates <sup>2</sup>					
	State Prison*	Comm. Control	Probation	County Jail	Other Sentence	Total	State Prison	Comm. Control	Probation	County Jail	Other Sentence	Total
1	1,355	525	5,615	4,739	114	<b>12,348</b>	1,040	401	4,603	3,722	92	<b>9,858</b>
	11.0%	4.3%	45.5%	38.4%	0.9%	<b>100.0%</b>	10.5%	4.1%	46.7%	37.8%	0.9%	<b>100.0%</b>
2	1,020	368	6,242	2,516	122	<b>10,268</b>	925	323	5,080	2,012	73	<b>8,413</b>
	9.9%	3.6%	60.8%	24.5%	1.2%	<b>100.0%</b>	11.0%	3.8%	60.4%	23.9%	0.9%	<b>100.0%</b>
3	2,521	892	12,513	9,065	200	<b>25,191</b>	2,041	920	11,549	7,244	190	<b>21,944</b>
	10.0%	3.5%	49.7%	36.0%	0.8%	<b>100.0%</b>	9.3%	4.2%	52.6%	33.0%	0.9%	<b>100.0%</b>
4	2,689	607	5,823	2,847	98	<b>12,064</b>	2,467	645	5,350	2,528	86	<b>11,076</b>
	22.3%	5.0%	48.3%	23.6%	0.8%	<b>100.0%</b>	22.3%	5.8%	48.3%	22.8%	0.8%	<b>100.0%</b>
5	4,210	777	5,766	2,805	84	<b>13,642</b>	4,200	791	5,670	2,521	80	<b>13,262</b>
	30.9%	5.7%	42.3%	20.6%	0.6%	<b>100.0%</b>	31.7%	6.0%	42.8%	19.0%	0.6%	<b>100.0%</b>
6	2,337	469	3,685	932	48	<b>7,471</b>	2,293	503	3,522	848	51	<b>7,217</b>
	31.3%	6.3%	49.3%	12.5%	0.6%	<b>100.0%</b>	31.8%	7.0%	48.8%	11.8%	0.7%	<b>100.0%</b>
7	3,642	487	2,021	446	34	<b>6,630</b>	3,925	588	1,957	378	30	<b>6,878</b>
	54.9%	7.3%	30.5%	6.7%	0.5%	<b>100.0%</b>	57.1%	8.5%	28.5%	5.5%	0.4%	<b>100.0%</b>
8	916	87	240	21	1	<b>1,265</b>	925	111	259	32	4	<b>1,331</b>
	72.4%	6.9%	19.0%	1.7%	0.1%	<b>100.0%</b>	69.5%	8.3%	19.5%	2.4%	0.3%	<b>100.0%</b>
9	870	91	110	16	3	<b>1,090</b>	842	80	110	11	4	<b>1,047</b>
	79.8%	8.3%	10.1%	1.5%	0.3%	<b>100.0%</b>	80.4%	7.6%	10.5%	1.1%	0.4%	<b>100.0%</b>
10	182	7	11	2	0	<b>202</b>	160	7	10	1	1	<b>179</b>
	90.1%	3.5%	5.4%	1.0%	0.0%	<b>100.0%</b>	89.4%	3.9%	5.6%	0.6%	0.6%	<b>100.0%</b>
<b>Total</b>	<b>19,742</b>	<b>4,310</b>	<b>42,026</b>	<b>23,389</b>	<b>704</b>	<b>90,171</b>	<b>18,818</b>	<b>4,369</b>	<b>38,110</b>	<b>19,297</b>	<b>611</b>	<b>81,205</b>
	<b>21.9%</b>	<b>4.8%</b>	<b>46.6%</b>	<b>25.9%</b>	<b>0.8%</b>	<b>100.0%</b>	<b>23.2%</b>	<b>5.4%</b>	<b>46.9%</b>	<b>23.8%</b>	<b>0.8%</b>	<b>100.0%</b>

<sup>1</sup> Offense dates on or after October 1, 2007.<sup>2</sup> Offense dates on or after October 1, 2008.**Table 6 State Prison Sentence Length by Offense Severity Level**

Offense Severity Level	FY2008-2009 Sentence Dates <sup>1</sup>					FY2009-2010 Sentence Dates <sup>2</sup>				
	LE 2*	GT 2-LE 4*	GT 4-LE 10*	GT 10*	Total	LE 2*	GT 2-LE 4*	GT 4-LE 10*	GT 10*	Total
	1,121	153	75	6	<b>1,355</b>	817	167	53	3	<b>1,040</b>

<b>1</b>	82.7%	11.3%	5.5%	0.4%	<b>100.0%</b>	78.6%	16.1%	5.1%	0.3%	<b>100.0%</b>
<b>2</b>	815	144	58	3	<b>1,020</b>	709	165	48	3	<b>925</b>
	79.9%	14.1%	5.7%	0.3%	<b>100.0%</b>	76.6%	17.8%	5.2%	0.3%	<b>100.0%</b>
<b>3</b>	1,993	401	119	8	<b>2,521</b>	1,575	361	99	6	<b>2,041</b>
	79.1%	15.9%	4.7%	0.3%	<b>100.0%</b>	77.2%	17.7%	4.9%	0.3%	<b>100.0%</b>
<b>4</b>	1,820	608	240	21	<b>2,689</b>	1,586	576	273	32	<b>2,467</b>
	67.7%	22.6%	8.9%	0.8%	<b>100.0%</b>	64.3%	23.3%	11.1%	1.3%	<b>100.0%</b>
<b>5</b>	2,542	1,120	472	76	<b>4,210</b>	2,453	1,195	458	94	<b>4,200</b>
	60.4%	26.6%	11.2%	1.8%	<b>100.0%</b>	58.4%	28.5%	10.9%	2.2%	<b>100.0%</b>
<b>6</b>	1,123	695	404	115	<b>2,337</b>	1,126	654	429	84	<b>2,293</b>
	48.1%	29.7%	17.3%	4.9%	<b>100.0%</b>	49.1%	28.5%	18.7%	3.7%	<b>100.0%</b>
<b>7</b>	931	1,536	933	242	<b>3,642</b>	987	1,642	1,054	242	<b>3,925</b>
	25.6%	42.2%	25.6%	6.6%	<b>100.0%</b>	25.1%	41.8%	26.9%	6.2%	<b>100.0%</b>
<b>8</b>	122	253	378	163	<b>916</b>	140	252	367	166	<b>925</b>
	13.3%	27.6%	41.3%	17.8%	<b>100.0%</b>	15.1%	27.2%	39.7%	17.9%	<b>100.0%</b>
<b>9</b>	125	126	385	234	<b>870</b>	101	109	370	262	<b>842</b>
	14.4%	14.5%	44.3%	26.9%	<b>100.0%</b>	12.0%	12.9%	43.9%	31.1%	<b>100.0%</b>
<b>10</b>	26	9	49	98	<b>182</b>	18	16	40	86	<b>160</b>
	14.3%	4.9%	26.9%	53.8%	<b>100.0%</b>	11.3%	10.0%	25.0%	53.8%	<b>100.0%</b>
<b>Total</b>	<b>10,618</b>	<b>5,045</b>	<b>3,113</b>	<b>966</b>	<b>19,742</b>	<b>9,512</b>	<b>5,137</b>	<b>3,191</b>	<b>978</b>	<b>18,818</b>
	53.8%	25.6%	15.8%	4.9%	<b>100.0%</b>	50.5%	27.3%	17.0%	5.2%	<b>100.0%</b>

\* LE = Less than or equal to; GT = Greater than

<sup>1</sup> Offense dates on or after October 1, 2007.

<sup>2</sup> Offense dates on or after October 1, 2008.

Florida's Criminal Punishment Code:  
A Comparative Assessment (FY 2009-2010)

[first](#) | [previous](#) | 9 of 14 | [next](#)

**Error processing SSI file**



**Error processing SSI file**[Skip navigation.](#) Error processing SSI file

Florida's Criminal Punishment Code:

A Comparative Assessment (FY 2009-2010)

[first](#) | [previous](#) | 10 of 14 | [next](#)

## Part III: Comparative Description

**Table 7 Number of Prior Offenses\***

Prior Offenses	FY2008-2009 Sentence Dates <sup>1</sup>		FY2009-2010 Sentence Dates <sup>2</sup>	
	Number	Percent	Number	Percent
None	21,415	23.7%	19,509	24.0%
Misdemeanor Only	23,875	26.5%	20,614	25.4%
One Felony	17,661	19.6%	15,757	19.4%
Two Felonies	11,678	13.0%	10,607	13.1%
Three Felonies	7,205	8.0%	6,644	8.2%
Four Felonies	4,182	4.6%	3,915	4.8%
Five Felonies	2,271	2.5%	2,162	2.7%
Six Felonies	1,052	1.2%	1,107	1.4%
Seven or More Felonies	832	0.9%	890	1.1%
<b>Total</b>	<b>90,171</b>	<b>100.0%</b>	<b>81,205</b>	<b>100.0%</b>

\* As indicated on the scoresheet.

<sup>1</sup> Offense dates on or after October 1, 2007.<sup>2</sup> Offense dates on or after October 1, 2008.**Table 8 Number of Additional Offenses\***

Additional Offenses	FY2008-2009 Sentence Dates <sup>1</sup>		FY2009-2010 Sentence Dates <sup>2</sup>	
	Number	Percent	Number	Percent
None	48,643	53.9%	42,091	51.8%
Misdemeanor Only	20,697	23.0%	18,498	22.8%
One Felony	14,338	15.9%	14,091	17.4%
Two Felonies	4,158	4.6%	4,046	5.0%
Three Felonies	1,352	1.5%	1,461	1.8%
Four Felonies	482	0.5%	503	0.6%
Five Felonies	251	0.3%	276	0.3%
Six Felonies	113	0.1%	104	0.1%
Seven or More Felonies	137	0.2%	135	0.2%
<b>Total</b>	<b>90,171</b>	<b>100.0%</b>	<b>81,205</b>	<b>100.0%</b>

\* As indicated on the scoresheet.

<sup>1</sup> Offense dates on or after October 1, 2007.<sup>2</sup> Offense dates on or after October 1, 2008.

**Table 9 Prior Felony Record\* and Sanction Imposed**

Number of Prior Felonies	FY2008-2009 Sentence Dates <sup>1</sup>						FY2009-2010 Sentence Dates <sup>2</sup>					
	State Prison	Comm. Control	Probation	County Jail	Other Sentence	Total	State Prison	Comm. Control	Probation	County Jail	Other Sentence	Total
None	5,435	2,366	28,339	8,663	487	<b>45,290</b>	5,221	2,454	25,273	6,764	411	<b>40,123</b>
	12.0%	5.2%	62.6%	19.1%	1.1%	<b>100.0%</b>	13.0%	6.1%	63.0%	16.9%	1.0%	<b>100.0%</b>
One	3,873	899	7,090	5,699	100	<b>17,661</b>	3,713	867	6,495	4,581	101	<b>15,757</b>
	21.9%	5.1%	40.1%	32.3%	0.6%	<b>100.0%</b>	23.6%	5.5%	41.2%	29.1%	0.6%	<b>100.0%</b>
Two	3,547	494	3,460	4,107	70	<b>11,678</b>	3,291	523	3,348	3,382	63	<b>10,607</b>
	30.4%	4.2%	29.6%	35.2%	0.6%	<b>100.0%</b>	31.0%	4.9%	31.6%	31.9%	0.6%	<b>100.0%</b>
Three	2,753	280	1,734	2,417	21	<b>7,205</b>	2,595	283	1,592	2,153	21	<b>6,644</b>
	38.2%	3.9%	24.1%	33.5%	0.3%	<b>100.0%</b>	39.1%	4.3%	24.0%	32.4%	0.3%	<b>100.0%</b>
Four	1,932	140	834	1,261	15	<b>4,182</b>	1,796	133	772	1,205	9	<b>3,915</b>
	46.2%	3.3%	19.9%	30.2%	0.4%	<b>100.0%</b>	45.9%	3.4%	19.7%	30.8%	0.2%	<b>100.0%</b>
Five	1,183	77	337	668	6	<b>2,271</b>	1,107	61	378	611	5	<b>2,162</b>
	52.1%	3.4%	14.8%	29.4%	0.3%	<b>100.0%</b>	51.2%	2.8%	17.5%	28.3%	0.2%	<b>100.0%</b>
Six	559	35	131	322	5	<b>1,052</b>	618	25	154	309	1	<b>1,107</b>
	53.1%	3.3%	12.5%	30.6%	0.5%	<b>100.0%</b>	55.8%	2.3%	13.9%	27.9%	0.1%	<b>100.0%</b>
Seven or More	460	19	101	252	0	<b>832</b>	477	23	98	292	0	<b>890</b>
	55.3%	2.3%	12.1%	30.3%	0.0%	<b>100.0%</b>	53.6%	2.6%	11.0%	32.8%	0.0%	<b>100.0%</b>
<b>Total</b>	<b>19,742</b>	<b>4,310</b>	<b>42,026</b>	<b>23,389</b>	<b>704</b>	<b>90,171</b>	<b>18,818</b>	<b>4,369</b>	<b>38,110</b>	<b>19,297</b>	<b>611</b>	<b>81,205</b>
	<b>21.9%</b>	<b>4.8%</b>	<b>46.6%</b>	<b>25.9%</b>	<b>0.8%</b>	<b>100.0%</b>	<b>23.2%</b>	<b>5.4%</b>	<b>46.9%</b>	<b>23.8%</b>	<b>0.8%</b>	<b>100.0%</b>

\* As indicated on the scoresheet

Note: County jail includes those sentenced to time served; prison includes those sentenced to life.

<sup>1</sup> Offense dates on or after October 1, 2007<sup>2</sup> Offense dates on or after October 1, 2008.**Table 10 Additional Offenses\* and Sanction Imposed**

Number of Prior Felonies	FY2008-2009 Sentence Dates <sup>1</sup>						FY2009-2010 Sentence Dates <sup>2</sup>					
	State Prison	Comm. Control	Probation	County Jail	Other Sentence	Total	State Prison	Comm. Control	Probation	County Jail	Other Sentence	Total
None	11,421	2,936	34,252	20,154	577	<b>69,340</b>	10,377	2,876	30,719	16,151	466	<b>60,589</b>
	16.5%	4.2%	49.4%	29.1%	0.8%	<b>100.0%</b>	17.1%	4.7%	50.7%	26.7%	0.8%	<b>100.0%</b>
One	4,702	948	5,985	2,616	87	<b>14,338</b>	4,841	995	5,646	2,500	109	<b>14,091</b>
	32.8%	6.6%	41.7%	18.2%	0.6%	<b>100.0%</b>	34.4%	7.1%	40.1%	17.7%	0.8%	<b>100.0%</b>
Two	2,058	275	1,310	481	34	<b>4,158</b>	1,990	305	1,232	500	19	<b>4,046</b>
	49.5%	6.6%	31.5%	11.6%	0.8%	<b>100.0%</b>	49.2%	7.5%	30.4%	12.4%	0.5%	<b>100.0%</b>
Three	850	82	313	105	2	<b>1,352</b>	880	117	343	109	12	<b>1,461</b>

	62.9%	6.1%	23.2%	7.8%	0.1%	<b>100.0%</b>	60.2%	8.0%	23.5%	7.5%	0.8%	<b>100.0%</b>
Four	337	29	91	22	3	<b>482</b>	337	40	101	22	3	<b>503</b>
	69.9%	6.0%	18.9%	4.6%	0.6%	<b>100.0%</b>	67.0%	8.0%	20.1%	4.4%	0.6%	<b>100.0%</b>
Five	175	22	46	8	0	<b>251</b>	201	19	43	11	2	<b>276</b>
	69.7%	8.8%	18.3%	3.2%	0.0%	<b>100.0%</b>	72.8%	6.9%	15.6%	4.0%	0.7%	<b>100.0%</b>
Six	84	10	17	1	1	<b>113</b>	87	7	8	2	0	<b>104</b>
	74.3%	8.8%	15.0%	0.9%	0.9%	<b>100.0%</b>	83.7%	6.7%	7.7%	1.9%	0.0%	<b>100.0%</b>
Seven or More	115	8	12	2	0	<b>137</b>	105	10	18	2	0	<b>135</b>
	83.9%	5.8%	8.8%	1.5%	0.0%	<b>100.0%</b>	77.8%	7.4%	13.3%	1.5%	0.0%	<b>100.0%</b>
<b>Total</b>	<b>19,742</b>	<b>4,310</b>	<b>42,026</b>	<b>23,389</b>	<b>704</b>	<b>90,171</b>	<b>18,818</b>	<b>4,369</b>	<b>38,110</b>	<b>19,297</b>	<b>611</b>	<b>81,205</b>
	<b>21.9%</b>	<b>4.8%</b>	<b>46.6%</b>	<b>25.9%</b>	<b>0.8%</b>	<b>100.0%</b>	<b>23.2%</b>	<b>5.4%</b>	<b>46.9%</b>	<b>23.8%</b>	<b>0.8%</b>	<b>100.0%</b>

\* As indicated on the scoresheet.

Note: County jail includes those sentenced to time served; prison includes those sentenced to life.

<sup>1</sup> Offense dates on or after October 1, 2007.

<sup>2</sup> Offense dates on or after October 1, 2008.

Florida's Criminal Punishment Code:  
A Comparative Assessment (FY 2009-2010)

[first](#) | [previous](#) | [10 of 14](#) | [next](#)

**Error processing SSI file**

Error processing SSI file

[Skip navigation.](#) Error processing SSI file

Florida's Criminal Punishment Code:  
A Comparative Assessment (FY 2009-2010)

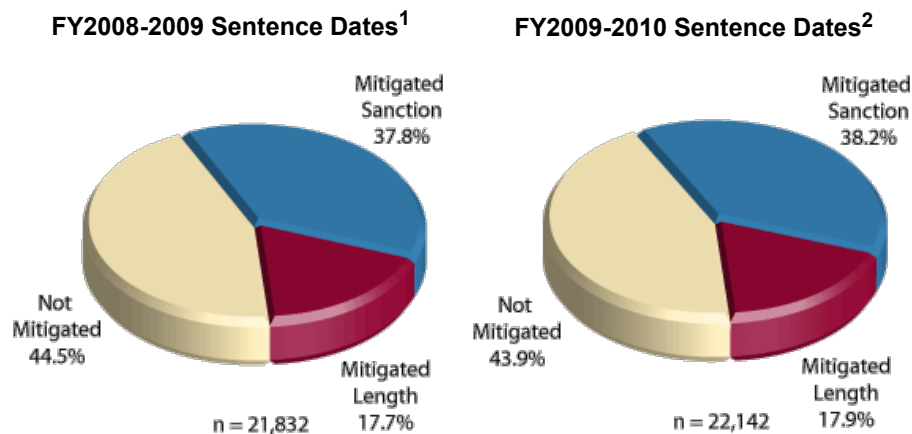
## Part III: Comparative Description

**Table 11 Mitigation Rates\* Among Offenders Scoring in Recommended State Prison Sanction Category**

Category	FY2008-2009 Sentence Dates <sup>1</sup>		FY2009-2010 Sentence Dates <sup>2</sup>	
	Number / Percent	Average Mitigated Length in Months	Number / Percent	Average Mitigated Length in Months
Mitigated Total	12,125 55.5%		12,423 56.1%	
Mitigated Sanction	8,261 37.8%		8,469 38.2%	
Mitigated Length	3,864 17.7%	23.0	3,954 17.9%	24.7
Not Mitigated	9,707 44.5%		9,719 43.9%	
<b>Total</b>	<b>21,832</b> <b>100.0%</b>		<b>22,142</b> <b>100.0%</b>	

\* Mitigation of sanction occurs when an offender does not receive a prison sanction although a prison sanction is mandated by the Criminal Punishment Code. Mitigated length occurs when an offender receives a prison sentence below the 25% permissible discretion existing within the Criminal Punishment Code. This total rate includes both mitigated sanction and mitigated length sentences. Offenders scoring to state prison who receive a Drug Offender Probation sentence are not counted as mitigated.

**Figure 2 Offenders Scoring in Recommended State Prison Sanction Category**



\*\*Total points exceeding 44.0

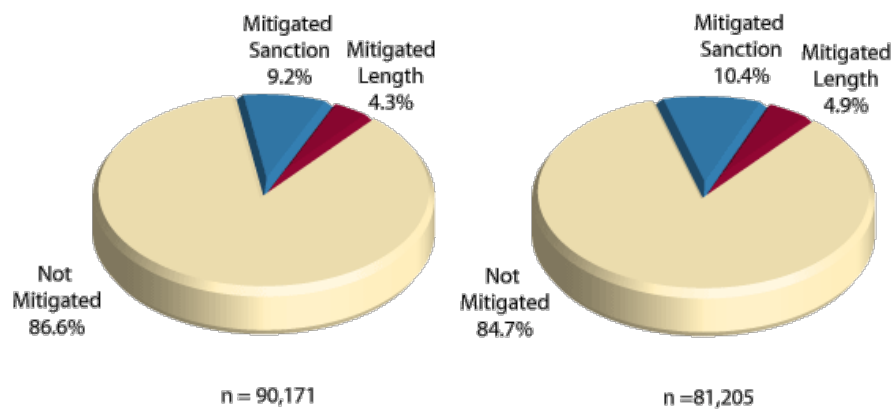
<sup>1</sup>Offense dates on or after October 1, 2007.

<sup>2</sup>Offense dates on or after October 1, 2008.

**Figure 3 Deviation Rates Below Permitted Sentences Among All Offenders Sentenced**

FY2008-2009 Sentence Dates<sup>1</sup>

FY2009-2010 Sentence Dates<sup>1</sup>



<sup>1</sup>Offense dates on or after October 1, 2007.

<sup>2</sup>Offense dates on or after October 1, 2008.

**Table 12 Mitigated Sanction Rates\* By Judicial Circuit**

Judicial Circuit	FY2008-2009 Sentence Dates <sup>1</sup>			FY2009-2010 Sentence Dates <sup>2</sup>		
	Scoresheets Exceeding 44.0 Total Points	Scoresheets Mitigated	Mitigation Rate	Scoresheets Exceeding 44.0 Total Points	Scoresheets Mitigated	Mitigation Rate
01- Pensacola	1,116	456	40.9%	1,071	490	45.8%
02- Tallahassee	432	196	45.4%	533	224	42.0%
03- Lake City	249	78	31.3%	276	85	30.8%
04- Jacksonville	1,314	317	24.1%	1,465	180	12.3%
05- Tavares	1,096	325	29.7%	1,320	352	26.7%
06- Clearwater	2,190	625	28.5%	2,254	643	28.5%
07- Daytona	882	286	32.4%	946	352	37.2%
08- Gainesville	553	227	41.0%	506	190	37.5%
09- Orlando	1,726	627	36.3%	1,708	664	38.9%
10- Bartow	1,058	290	27.4%	934	226	24.2%
11- Miami	2,394	1,746	72.9%	2,618	1,918	73.3%
12- Sarasota	645	145	22.5%	587	201	34.2%
13- Tampa	2,342	1,079	46.1%	2,031	951	46.8%
14- Panama City	458	142	31.0%	562	184	32.7%
15- West Palm Beach	943	409	43.4%	1,069	354	33.1%
16- Key West	88	52	59.1%	79	37	46.8%
17- Ft. Lauderdale	1,723	643	37.3%	1,756	844	48.1%
18- Sanford	763	217	28.4%	746	235	31.5%
19- Ft. Pierce	700	106	15.1%	647	135	20.9%
20- Ft. Myers	1,160	295	25.4%	1,034	204	19.7%
<b>Statewide</b>	<b>21,832</b>	<b>8,261</b>	<b>37.8%</b>	<b>22,142</b>	<b>8,469</b>	<b>38.2%</b>

\* Mitigation of sanction occurs when an offender does not receive a prison sanction although a prison sanction is mandated by the Criminal Punishment Code. Those receiving Drug Offender Probation are not included.

<sup>1</sup> Offense dates on or after October 1, 2007.

<sup>2</sup> Offense dates on or after October 1, 2008.

**Table 13 Mitigated Sanction Rates and Sentence Length Rates\* By Judicial Circuit**

Judicial Circuit	FY2008-2009 Sentence Dates <sup>1</sup>			FY2009-2010 Sentence Dates <sup>2</sup>		
	Scoresheets Exceeding 44.0 Total Points	Scoresheets Mitigated	Mitigation Rate	Scoresheets Exceeding 44.0 Total Points	Scoresheets Mitigated	Mitigation Rate
01- Pensacola	1,116	568	50.9%	1,071	588	54.9%
02- Tallahassee	432	319	73.8%	533	403	75.6%
03- Lake City	249	125	50.2%	276	152	55.1%
04- Jacksonville	1,314	538	40.9%	1,465	484	33.0%
05- Tavares	1,096	457	41.7%	1,320	578	43.8%
06- Clearwater	2,190	1,039	47.4%	2,254	1,096	48.6%
07- Daytona	882	485	55.0%	946	597	63.1%
08- Gainesville	553	426	77.0%	506	370	73.1%
09- Orlando	1,726	926	53.7%	1,708	935	54.7%
10- Bartow	1,058	493	46.6%	934	355	38.0%
11- Miami	2,394	2,201	91.9%	2,618	2,389	91.3%
12- Sarasota	645	250	38.8%	587	265	45.1%
13- Tampa	2,342	1,664	71.1%	2,031	1,432	70.5%
14- Panama City	458	229	50.0%	562	295	52.5%
15- West Palm Beach	943	560	59.4%	1,069	504	47.1%
16- Key West	88	59	67.0%	79	48	60.8%
17- Ft. Lauderdale	1,723	873	50.7%	1,756	1,095	62.4%
18- Sanford	763	307	40.2%	746	316	42.4%
19- Ft. Pierce	700	171	24.4%	647	203	31.4%
20- Ft. Myers	1,160	435	37.5%	1,034	318	30.8%
<b>Statewide</b>	<b>21,832</b>	<b>12,125</b>	<b>55.5%</b>	<b>22,142</b>	<b>12,423</b>	<b>56.1%</b>

\* Mitigation of sanction occurs when an offender does not receive a prison sanction although a prison sanction is mandated by the Criminal Punishment Code. Those receiving Drug Offender Probation are not included. Mitigated length occurs when an offender receives a prison sentence below the 25% permissible discretion existing within the Criminal Punishment Code. This total rate includes both mitigated sanction and mitigated length sentences.

<sup>1</sup> Offense dates on or after October 1, 2007.

<sup>2</sup> Offense dates on or after October 1, 2008.

**Table 14 Mitigation Rates\* Among Offenders Scoring in Recommended State Prison Sanction Category\*\***

Offense Type		FY2008-2009 Sentence Dates <sup>1</sup>				FY2009-2010 Sentence Dates <sup>2</sup>					
		Total Mitigated	Mitigated Sanction	Mitigated Length	Not Mitigated	Total	Total Mitigated	Mitigated Sanction	Mitigated Length	Not Mitigated	Total
<b>Murder/Manslaughter</b>	Attempt	24	9	15	71	<b>95</b>	181	12	14	62	<b>88</b>
	Complete	95	24	71	89	<b>184</b>	344	11	53	87	<b>151</b>
<b>Sexual/Lewd Behavior</b>	Attempt	26	9	17	27	<b>53</b>	97	9	12	51	<b>72</b>
	Complete	227	109	118	228	<b>455</b>	801	131	148	177	<b>456</b>
<b>Robbery</b>	Attempt	82	44	38	118	<b>200</b>	356	52	30	106	<b>188</b>

	Complete	631	338	293	881	<b>1,512</b>	2,686	337	306	855	<b>1,498</b>
<b>Violent,Other</b>	Attempt	16	11	5	17	<b>33</b>	55	13	6	22	<b>41</b>
	Complete	2,532	1,928	604	1,504	<b>4,036</b>	6,144	1,977	640	1,513	<b>4,130</b>
<b>Burglary</b>	Attempt	58	45	13	106	<b>164</b>	283	53	22	138	<b>213</b>
	Complete	2,539	1,782	757	1,755	<b>4,294</b>	6,806	1,993	895	1,960	<b>4,848</b>
<b>Property Theft/Fraud/Damage</b>	Attempt	2	1	1	3	<b>5</b>	9	0	0	3	<b>3</b>
	Complete	1,128	772	356	945	<b>2,073</b>	3,374	780	348	988	<b>2,116</b>
<b>Drugs</b>	Attempt	80	65	15	44	<b>124</b>	183	58	20	60	<b>138</b>
	Complete	2,993	1,972	1,021	2,765	<b>5,758</b>	9,544	2,023	943	2,590	<b>5,556</b>
<b>Weapons</b>	Attempt	1	1	0	4	<b>5</b>	9	1	0	1	<b>2</b>
	Complete	338	241	97	411	<b>749</b>	1,257	209	101	433	<b>743</b>
<b>Other</b>	Attempt	10	8	2	7	<b>17</b>	26	6	4	6	<b>16</b>
	Complete	1,343	902	441	732	<b>2,075</b>	3,248	804	412	667	<b>1,883</b>
<b>Total</b>		<b>12,125</b>	<b>8,261</b>	<b>3,864</b>	<b>9,707</b>	<b>21,832</b>	<b>35,403</b>	<b>8,469</b>	<b>3,954</b>	<b>9,719</b>	<b>22,142</b>

\* Mitigation of sanction occurs when an offender does not receive a prison sanction although a prison sanction is mandated by the Criminal Punishment Code. Those receiving Drug Offender Probation are not included. Mitigated length occurs when an offender receives a prison sentence below the 25% permissible discretion existing within the Criminal Punishment Code. This total rate includes both mitigated sanction and mitigated length sentences.

\*\* Total Points Exceeding 44.0.

<sup>1</sup> Offense dates on or after October 1, 2007.

<sup>2</sup> Offense dates on or after October 1, 2008.

Florida's Criminal Punishment Code:  
A Comparative Assessment (FY 2009-2010)

[first](#) | [previous](#) | [11 of 14](#) | [next](#)

**Error processing SSI file**

**Error processing SSI file**[Skip navigation.](#) **Error processing SSI file**

Florida's Criminal Punishment Code:

A Comparative Assessment (FY 2009-2010)

[first](#) | [previous](#) | [12 of 14](#) | [next](#)

# Total Admissions to Prison By County of Commitment

## Fiscal Year 2009 - 2010

County	Total	Percent	County	Total	Percent
ALACHUA	716	2.0%	LEE	987	2.7%
BAKER	56	0.2%	LEON	747	2.1%
BAY	917	2.5%	LEVY	155	0.4%
BRADFORD	59	0.2%	LIBERTY	28	0.1%
BREVARD	1,179	3.2%	MADISON	36	0.1%
BROWARD	2,598	7.1%	MANATEE	563	1.5%
CALHOUN	38	0.1%	MARION	891	2.4%
CHARLOTTE	402	1.1%	MARTIN	452	1.2%
CITRUS	273	0.7%	MONROE	195	0.5%
CLAY	409	1.1%	NASSAU	148	0.4%
COLLIER	412	1.1%	OKALOOSA	312	0.9%
COLUMBIA	311	0.9%	OKEECHOBEE	193	0.5%
MIAMI-DADE	2,198	6.0%	ORANGE	1,876	5.2%
DESOTO	122	0.3%	OSCEOLA	527	1.4%
DIXIE	66	0.2%	PALM BEACH	1,461	4.0%
DUVAL	2,513	6.9%	PASCO	963	2.6%
ESCAMBIA	1,062	2.9%	PINELLAS	2,240	6.2%
FLAGLER	76	0.2%	POLK	1,845	5.1%
FRANKLIN	53	0.1%	PUTNAM	240	0.7%
GADSDEN	173	0.5%	ST. JOHNS	291	0.8%
GILCHRIST	31	0.1%	ST. LUCIE	860	2.4%
GLADES	26	0.1%	SANTA ROSA	336	0.9%
GULF	32	0.1%	SARASOTA	505	1.4%
HAMILTON	34	0.1%	SEMINOLE	404	1.1%
HARDEE	66	0.2%	SUMTER	116	0.3%
HENDRY	109	0.3%	SUWANNEE	197	0.5%
HERNANDO	318	0.9%	TAYLOR	82	0.2%
HIGHLANDS	255	0.7%	UNION	31	0.1%



HILLSBOROUGH	2,908	8.0%	VOLUSIA	939	2.6%
HOLMES	62	0.2%	WAKULLA	70	0.2%
INDIAN RIVER	237	0.7%	WALTON	87	0.2%
JACKSON	115	0.3%	WASHINGTON	76	0.2%
JEFFERSON	57	0.2%	Other States	19	0.1%
LAFAYETTE	24	0.1%	Data Unavailable	580	
LAKE	635	1.7%	<b>TOTAL</b>	<b>36,994</b>	

## Total Admissions to Prison By Circuit

Fiscal Year 2009 - 2010			
CIRCUIT 1	1,797	CIRCUIT 11	2,198
CIRCUIT 2	1,128	CIRCUIT 12	1,190
CIRCUIT 3	750	CIRCUIT 13	2,908
CIRCUIT 4	3,070	CIRCUIT 14	1,240
CIRCUIT 5	2,233	CIRCUIT 15	1,461
CIRCUIT 6	3,203	CIRCUIT 16	195
CIRCUIT 7	1,546	CIRCUIT 17	2,598
CIRCUIT 8	1,048	CIRCUIT 18	1,583
CIRCUIT 9	2,403	CIRCUIT 19	1,742
CIRCUIT 10	2,166	CIRCUIT 20	1,936

Florida's Criminal Punishment Code:  
A Comparative Assessment (FY 2009-2010)

[first](#) | [previous](#) | 12 of 14 | [next](#)

**Error processing SSI file**

**Error processing SSI file**[Skip navigation.](#) **Error processing SSI file**

Florida's Criminal Punishment Code:

[first](#) | [previous](#) | 13 of 14 | [next](#)

A Comparative Assessment (FY 2009-2010)

# Florida Criminal Punishment Code; Offense Severity Ranking Chart

## Section 921.0022, Florida Statutes

Florida Statute	Felony Degree	Description
<b>(a) LEVEL 1</b>		
<a href="#">24.118(3)(a)</a>	3rd	Counterfeit or altered state lottery ticket.
<a href="#">212.054(2)(b)</a>	3rd	Discretionary sales surtax; limitations, administration, and collection.
<a href="#">212.15(2)(b)</a>	3rd	Failure to remit sales taxes, amount greater than \$300 but less than \$20,000.
<a href="#">316.1935(1)</a>	3rd	Fleeing or attempting to elude law enforcement officer.
<a href="#">319.30(5)</a>	3rd	Sell, exchange, give away certificate of title or identification number plate.
<a href="#">319.35(1)(a)</a>	3rd	Tamper, adjust, change, etc., an odometer.
<a href="#">320.26(1)(a)</a>	3rd	Counterfeit, manufacture, or sell registration license plates or validation stickers.
<a href="#">322.212(1)(a)-(c)</a>	3rd	Possession of forged, stolen, counterfeit, or unlawfully issued driver's license; possession of simulated identification.
<a href="#">322.212(4)</a>	3rd	Supply or aid in supplying unauthorized driver's license or identification card.
<a href="#">322.212(5)(a)</a>	3rd	False application for driver's license or identification card.
<a href="#">414.39(2)</a>	3rd	Unauthorized use, possession, forgery, or alteration of food stamps, Medicaid ID, value greater than \$200.
<a href="#">414.39(3)(a)</a>	3rd	Fraudulent misappropriation of public assistance funds by employee/official, value more than \$200.
<a href="#">443.071(1)</a>	3rd	False statement or representation to obtain or increase unemployment compensation benefits.
<a href="#">509.151(1)</a>	3rd	Defraud an innkeeper, food or lodging value greater than \$300.
<a href="#">517.302(1)</a>	3rd	Violation of the Florida Securities and Investor Protection Act.
<a href="#">562.27(1)</a>	3rd	Possess still or still apparatus.
<a href="#">713.69</a>	3rd	Tenant removes property upon which lien has accrued, value more than \$50.

<a href="#">812.014(3)(c)</a>	3rd	Petit theft (3rd conviction); theft of any property not specified in subsection (2).
<a href="#">812.081(2)</a>	3rd	Unlawfully makes or causes to be made a reproduction of a trade secret.
<a href="#">815.04(4)(a)</a>	3rd	Offense against intellectual property (i.e., computer programs, data).
<a href="#">817.52(2)</a>	3rd	Hiring with intent to defraud, motor vehicle services.
<a href="#">817.569(2)</a>	3rd	Use of public record or public records information to facilitate commission of a felony.
<a href="#">826.01</a>	3rd	Bigamy.
<a href="#">828.122(3)</a>	3rd	Fighting or baiting animals.
<a href="#">831.04(1)</a>	3rd	<a href="#">Any erasure, alteration, etc., of any replacement deed, map, plat, or other document listed in s. 92.28.</a>
<a href="#">831.31(1)(a)</a>	3rd	<a href="#">Sell, deliver, or possess counterfeit controlled substances, all but s. 893.03(5) drugs.</a>
<a href="#">832.041(1)</a>	3rd	Stopping payment with intent to defraud \$150 or more.
<a href="#">832.05(2)(b) &amp; (4)(c)</a>	3rd	Knowing, making, issuing worthless checks \$150 or more or obtaining property in return for worthless check \$150 or more.
<a href="#">838.15(2)</a>	3rd	Commercial bribe receiving.
<a href="#">838.16</a>	3rd	Commercial bribery.
<a href="#">843.18</a>	3rd	Fleeing by boat to elude a law enforcement officer.
<a href="#">847.011(1)(a)</a>	3rd	Sell, distribute, etc., obscene, lewd, etc., material (2nd conviction).
<a href="#">849.01</a>	3rd	Keeping gambling house.
<a href="#">849.09(1)(a)-(d)</a>	3rd	Lottery; set up, promote, etc., or assist therein, conduct or advertise drawing for prizes, or dispose of property or money by means of lottery.
<a href="#">849.23</a>	3rd	Gambling-related machines; "common offender" as to property rights.
<a href="#">849.25(2)</a>	3rd	Engaging in bookmaking.
<a href="#">860.08</a>	3rd	Interfere with a railroad signal.
<a href="#">860.13(1)(a)</a>	3rd	Operate aircraft while under the influence.
<a href="#">893.13(2)(a)2.</a>	3rd	Purchase of cannabis.
<a href="#">893.13(6)(a)</a>	3rd	Possession of cannabis (more than 20 grams).
<a href="#">934.03(1)(a)</a>	3rd	Intercepts, or procures any other person to intercept, any wire or oral communication.

**(b) LEVEL 2**

<a href="#">379.2431(1)(e)3.</a>	3rd	Possession of 11 or fewer marine turtle eggs in violation of the Marine Turtle Protection Act.
<a href="#">379.2431(1)(e)4.</a>	3rd	Possession of more than 11 marine turtle eggs in violation of the Marine Turtle Protection Act.  Dumps waste litter exceeding 500 lbs. in weight or 100 cubic feet in volume

<a href="#">403.413(5)(c)</a>	3rd	or any quantity for commercial purposes, or hazardous waste.
<a href="#">517.07</a>	3rd	Registration of securities and furnishing of prospectus required.
[1]590.28(1)	3rd	Willful, malicious, or intentional burning.
<a href="#">784.05(3)</a>	3rd	Storing or leaving a loaded firearm within reach of minor who uses it to inflict injury or death.
<a href="#">787.04(1)</a>	3rd	In violation of court order, take, entice, etc., minor beyond state limits.
<a href="#">806.13(1)(b)3.</a>	3rd	Criminal mischief; damage \$1,000 or more to public communication or any other public service.
<a href="#">810.061(2)</a>	3rd	Impairing or impeding telephone or power to a dwelling; facilitating or furthering burglary.
<a href="#">810.09(2)(e)</a>	3rd	Trespassing on posted commercial horticulture property.
<a href="#">812.014(2)(c)1.</a>	3rd	Grand theft, 3rd degree; \$300 or more but less than \$5,000.
<a href="#">812.014(2)(d)</a>	3rd	Grand theft, 3rd degree; \$100 or more but less than \$300, taken from unenclosed curtilage of dwelling.
<a href="#">812.015(7)</a>	3rd	Possession, use, or attempted use of an antishoplifting or inventory control device countermeasure.
<a href="#">817.234(1)(a)2.</a>	3rd	False statement in support of insurance claim.
<a href="#">817.481(3)(a)</a>	3rd	Obtain credit or purchase with false, expired, counterfeit, etc., credit card, value over \$300.
<a href="#">817.52(3)</a>	3rd	Failure to redeliver hired vehicle.
<a href="#">817.54</a>	3rd	With intent to defraud, obtain mortgage note, etc., by false representation.
<a href="#">817.60(5)</a>	3rd	Dealing in credit cards of another.
<a href="#">817.60(6)(a)</a>	3rd	Forgery; purchase goods, services with false card.
<a href="#">817.61</a>	3rd	Fraudulent use of credit cards over \$100 or more within 6 months.
<a href="#">826.04</a>	3rd	Knowingly marries or has sexual intercourse with person to whom related.
<a href="#">831.01</a>	3rd	Forgery.
<a href="#">831.02</a>	3rd	Uttering forged instrument; utters or publishes alteration with intent to defraud.
<a href="#">831.07</a>	3rd	Forging bank bills, checks, drafts, or promissory notes.
<a href="#">831.08</a>	3rd	Possessing 10 or more forged notes, bills, checks, or drafts.
<a href="#">831.09</a>	3rd	Uttering forged notes, bills, checks, drafts, or promissory notes.
<a href="#">831.11</a>	3rd	Bringing into the state forged bank bills, checks, drafts, or notes.
<a href="#">832.05(3)(a)</a>	3rd	Cashing or depositing item with intent to defraud.
<a href="#">843.08</a>	3rd	Falsely impersonating an officer.
<a href="#">893.13(2)(a)2.</a>	3rd	<a href="#">Purchase of any s. 893.03(1)(c), (2)(c)1., (2)(c)2., (2)(c)3., (2)(c)5., (2)(c)6., (2)(c)7., (2)(c)8., (2)(c)9., (3), or (4) drugs other than cannabis.</a>

<a href="#">893.147(2)</a>	3rd	Manufacture or delivery of drug paraphernalia.
<b>(c) LEVEL 3</b>		
<a href="#">119.10(2)(b)</a>	3rd	Unlawful use of confidential information from police reports.
<a href="#">316.066(6)(b)-(d)</a>	3rd	Unlawfully obtaining or using confidential crash reports.
<a href="#">316.193(2)(b)</a>	3rd	Felony DUI, 3rd conviction.
<a href="#">316.1935(2)</a>	3rd	Fleeing or attempting to elude law enforcement officer in patrol vehicle with siren and lights activated.
<a href="#">319.30(4)</a>	3rd	Possession by junkyard of motor vehicle with identification number plate removed.
<a href="#">319.33(1)(a)</a>	3rd	Alter or forge any certificate of title to a motor vehicle or mobile home.
<a href="#">319.33(1)(c)</a>	3rd	Procure or pass title on stolen vehicle.
<a href="#">319.33(4)</a>	3rd	With intent to defraud, possess, sell, etc., a blank, forged, or unlawfully obtained title or registration.
<a href="#">327.35(2)(b)</a>	3rd	Felony BUI.
<a href="#">328.05(2)</a>	3rd	Possess, sell, or counterfeit fictitious, stolen, or fraudulent titles or bills of sale of vessels.
<a href="#">328.07(4)</a>	3rd	Manufacture, exchange, or possess vessel with counterfeit or wrong ID number.
<a href="#">376.302(5)</a>	3rd	Fraud related to reimbursement for cleanup expenses under the Inland Protection Trust Fund.
<a href="#">379.2431(1)(e)5.</a>	3rd	Taking, disturbing, mutilating, destroying, causing to be destroyed, transferring, selling, offering to sell, molesting, or harassing marine turtles, marine turtle eggs, or marine turtle nests in violation of the Marine Turtle Protection Act.
<a href="#">379.2431(1)(e)6.</a>	3rd	Soliciting to commit or conspiring to commit a violation of the Marine Turtle Protection Act.
[2]400.9935(4)	3rd	Operating a clinic without a license or filing false license application or other required information.
<a href="#">440.1051(3)</a>	3rd	False report of worker's compensation fraud or retaliation for making such a report.
<a href="#">501.001(2)(b)</a>	2nd	Tampers with a consumer product or the container using materially false/misleading information.
<a href="#">624.401(4)(a)</a>	3rd	Transacting insurance without a certificate of authority.
<a href="#">624.401(4)(b)1.</a>	3rd	Transacting insurance without a certificate of authority; premium collected less than \$20,000.
<a href="#">626.902(1)(a) &amp; (b)</a>	3rd	Representing an unauthorized insurer.
<a href="#">697.08</a>	3rd	Equity skimming.
<a href="#">790.15(3)</a>	3rd	Person directs another to discharge firearm from a vehicle.

<a href="#">796.05(1)</a>	3rd	Live on earnings of a prostitute.
<a href="#">806.10(1)</a>	3rd	Maliciously injure, destroy, or interfere with vehicles or equipment used in firefighting.
<a href="#">806.10(2)</a>	3rd	Interferes with or assaults firefighter in performance of duty.
<a href="#">810.09(2)(c)</a>	3rd	Trespass on property other than structure or conveyance armed with firearm or dangerous weapon.
<a href="#">812.014(2)(c)2.</a>	3rd	Grand theft; \$5,000 or more but less than \$10,000.
<a href="#">812.0145(2)(c)</a>	3rd	Theft from person 65 years of age or older; \$300 or more but less than \$10,000.
<a href="#">815.04(4)(b)</a>	2nd	Computer offense devised to defraud or obtain property.
<a href="#">817.034(4)(a)3.</a>	3rd	Engages in scheme to defraud (Florida Communications Fraud Act), property valued at less than \$20,000.
<a href="#">817.233</a>	3rd	Burning to defraud insurer.
<a href="#">817.234(8)(b)-(c)</a>	3rd	Unlawful solicitation of persons involved in motor vehicle accidents.
<a href="#">817.234(11)(a)</a>	3rd	Insurance fraud; property value less than \$20,000.
<a href="#">817.236</a>	3rd	Filing a false motor vehicle insurance application.
<a href="#">817.2361</a>	3rd	Creating, marketing, or presenting a false or fraudulent motor vehicle insurance card.
<a href="#">817.413(2)</a>	3rd	Sale of used goods as new.
<a href="#">817.505(4)</a>	3rd	Patient brokering.
<a href="#">828.12(2)</a>	3rd	Tortures any animal with intent to inflict intense pain, serious physical injury, or death.
<a href="#">831.28(2)(a)</a>	3rd	Counterfeiting a payment instrument with intent to defraud or possessing a counterfeit payment instrument.
<a href="#">831.29</a>	2nd	Possession of instruments for counterfeiting drivers' licenses or identification cards.
<a href="#">838.021(3)(b)</a>	3rd	Threatens unlawful harm to public servant.
<a href="#">843.19</a>	3rd	Injure, disable, or kill police dog or horse.
<a href="#">860.15(3)</a>	3rd	Overcharging for repairs and parts.
<a href="#">870.01(2)</a>	3rd	Riot; inciting or encouraging.
<a href="#">893.13(1)(a)2.</a>	3rd	<a href="#">Sell, manufacture, or deliver cannabis (or other s. 893.03(1)(c), (2)(c)1., (2)(c)2., (2)(c)3., (2)(c)5., (2)(c)6., (2)(c)7., (2)(c)8., (2)(c)9., (3), or (4) drugs).</a>
<a href="#">893.13(1)(d)2.</a>	2nd	<a href="#">Sell, manufacture, or deliver s. 893.03(1)(c), (2)(c)1., (2)(c)2., (2)(c)3., (2)(c)5., (2)(c)6., (2)(c)7., (2)(c)8., (2)(c)9., (3), or (4) drugs within 1,000 feet of university.</a>
<a href="#">893.13(1)(f)2.</a>	2nd	<a href="#">Sell, manufacture, or deliver s. 893.03(1)(c), (2)(c)1., (2)(c)2., (2)(c)3., (2)(c)5., (2)(c)6., (2)(c)7., (2)(c)8., (2)(c)9., (3), or (4) drugs within 1,000 feet of public housing facility.</a>

<a href="#">893.13(6)(a)</a>	3rd	Possession of any controlled substance other than felony possession of cannabis.
<a href="#">893.13(7)(a)8.</a>	3rd	Withhold information from practitioner regarding previous receipt of or prescription for a controlled substance.
<a href="#">893.13(7)(a)9.</a>	3rd	Obtain or attempt to obtain controlled substance by fraud, forgery, misrepresentation, etc.
<a href="#">893.13(7)(a)10.</a>	3rd	Affix false or forged label to package of controlled substance.
<a href="#">893.13(7)(a)11.</a>	3rd	Furnish false or fraudulent material information on any document or record required by chapter 893.
<a href="#">893.13(8)(a)1.</a>	3rd	Knowingly assist a patient, other person, or owner of an animal in obtaining a controlled substance through deceptive, untrue, or fraudulent representations in or related to the practitioner's practice.
<a href="#">893.13(8)(a)2.</a>	3rd	Employ a trick or scheme in the practitioner's practice to assist a patient, other person, or owner of an animal in obtaining a controlled substance.
<a href="#">893.13(8)(a)3.</a>	3rd	Knowingly write a prescription for a controlled substance for a fictitious person.
<a href="#">893.13(8)(a)4.</a>	3rd	Write a prescription for a controlled substance for a patient, other person, or an animal if the sole purpose of writing the prescription is a monetary benefit for the practitioner.
<a href="#">918.13(1)(a)</a>	3rd	Alter, destroy, or conceal investigation evidence.
<a href="#">944.47(1)(a)1.-2.</a>	3rd	Introduce contraband to correctional facility.
<a href="#">944.47(1)(c)</a>	2nd	Possess contraband while upon the grounds of a correctional institution.
<a href="#">985.721</a>	3rd	Escapes from a juvenile facility (secure detention or residential commitment facility).

#### (d) LEVEL 4

<a href="#">316.1935(3)(a)</a>	2nd	Driving at high speed or with wanton disregard for safety while fleeing or attempting to elude law enforcement officer who is in a patrol vehicle with siren and lights activated.
<a href="#">499.0051(1)</a>	3rd	Failure to maintain or deliver pedigree papers.
<a href="#">499.0051(2)</a>	3rd	Failure to authenticate pedigree papers.
<a href="#">499.0051(6)</a>	2nd	Knowing sale or delivery, or possession with intent to sell, contraband prescription drugs.
<a href="#">784.07(2)(b)</a>	3rd	Battery of law enforcement officer, firefighter, intake officer, etc.
<a href="#">784.074(1)(c)</a>	3rd	Battery of sexually violent predators facility staff.
<a href="#">784.075</a>	3rd	Battery on detention or commitment facility staff.
<a href="#">784.078</a>	3rd	Battery of facility employee by throwing, tossing, or expelling certain fluids or materials.
<a href="#">784.08(2)(c)</a>	3rd	Battery on a person 65 years of age or older.
<a href="#">784.081(3)</a>	3rd	Battery on specified official or employee.



<a href="#">784.082(3)</a>	3rd	Battery by detained person on visitor or other detainee.
<a href="#">784.083(3)</a>	3rd	Battery on code inspector.
<a href="#">784.085</a>	3rd	Battery of child by throwing, tossing, projecting, or expelling certain fluids or materials.
<a href="#">787.03(1)</a>	3rd	Interference with custody; wrongly takes minor from appointed guardian.
<a href="#">787.04(2)</a>	3rd	Take, entice, or remove child beyond state limits with criminal intent pending custody proceedings.
<a href="#">787.04(3)</a>	3rd	Carrying child beyond state lines with criminal intent to avoid producing child at custody hearing or delivering to designated person.
<a href="#">790.115(1)</a>	3rd	Exhibiting firearm or weapon within 1,000 feet of a school.
<a href="#">790.115(2)(b)</a>	3rd	Possessing electric weapon or device, destructive device, or other weapon on school property.
<a href="#">790.115(2)(c)</a>	3rd	Possessing firearm on school property.
<a href="#">800.04(7)(c)</a>	3rd	Lewd or lascivious exhibition; offender less than 18 years.
<a href="#">810.02(4)(a)</a>	3rd	Burglary, or attempted burglary, of an unoccupied structure; unarmed; no assault or battery.
<a href="#">810.02(4)(b)</a>	3rd	Burglary, or attempted burglary, of an unoccupied conveyance; unarmed; no assault or battery.
<a href="#">810.06</a>	3rd	Burglary; possession of tools.
<a href="#">810.08(2)(c)</a>	3rd	Trespass on property, armed with firearm or dangerous weapon.
<a href="#">812.014(2)(c)3.</a>	3rd	Grand theft, 3rd degree \$10,000 or more but less than \$20,000.
<a href="#">812.014(2)(c)4.-10.</a>	3rd	Grand theft, 3rd degree, a will, firearm, motor vehicle, livestock, etc.
<a href="#">812.0195(2)</a>	3rd	Dealing in stolen property by use of the Internet; property stolen \$300 or more.
<a href="#">817.563(1)</a>	3rd	<a href="#">Sell or deliver substance other than controlled substance agreed upon, excluding s. 893.03(5) drugs.</a>
<a href="#">817.568(2)(a)</a>	3rd	Fraudulent use of personal identification information.
<a href="#">817.625(2)(a)</a>	3rd	Fraudulent use of scanning device or reencoder.
<a href="#">828.125(1)</a>	2nd	Kill, maim, or cause great bodily harm or permanent breeding disability to any registered horse or cattle.
<a href="#">837.02(1)</a>	3rd	Perjury in official proceedings.
<a href="#">837.021(1)</a>	3rd	Make contradictory statements in official proceedings.
<a href="#">838.022</a>	3rd	Official misconduct.
<a href="#">839.13(2)(a)</a>	3rd	Falsifying records of an individual in the care and custody of a state agency.
<a href="#">839.13(2)(c)</a>	3rd	Falsifying records of the Department of Children and Family Services.
<a href="#">843.021</a>	3rd	Possession of a concealed handcuff key by a person in custody.



<a href="#">843.025</a>	3rd	Deprive law enforcement, correctional, or correctional probation officer of means of protection or communication.
<a href="#">843.15(1)(a)</a>	3rd	Failure to appear while on bail for felony (bond estreatment or bond jumping).
847.0135(5)(c)	3rd	Lewd or lascivious exhibition using computer; offender less than 18 years.
<a href="#">874.05(1)</a>	3rd	Encouraging or recruiting another to join a criminal gang.
<a href="#">893.13(2)(a)1.</a>	2nd	<a href="#">Purchase of cocaine (or other s. 893.03(1)(a), (b), or (d), (2)(a), (2)(b), or (2)(c)4. drugs).</a>
<a href="#">914.14(2)</a>	3rd	Witnesses accepting bribes.
<a href="#">914.22(1)</a>	3rd	Force, threaten, etc., witness, victim, or informant.
<a href="#">914.23(2)</a>	3rd	Retaliation against a witness, victim, or informant, no bodily injury.
<a href="#">918.12</a>	3rd	Tampering with jurors.
<a href="#">934.215</a>	3rd	Use of two-way communications device to facilitate commission of a crime.

**(e) LEVEL 5**

<a href="#">316.027(1)(a)</a>	3rd	Accidents involving personal injuries, failure to stop; leaving scene.
<a href="#">316.1935(4)(a)</a>	2nd	Aggravated fleeing or eluding.
<a href="#">322.34(6)</a>	3rd	Careless operation of motor vehicle with suspended license, resulting in death or serious bodily injury.
<a href="#">327.30(5)</a>	3rd	Vessel accidents involving personal injury; leaving scene.
<a href="#">381.0041(11)(b)</a>	3rd	Donate blood, plasma, or organs knowing HIV positive.
<a href="#">440.10(1)(g)</a>	2nd	Failure to obtain workers' compensation coverage.
<a href="#">440.105(5)</a>	2nd	Unlawful solicitation for the purpose of making workers' compensation claims.
<a href="#">440.381(2)</a>	2nd	Submission of false, misleading, or incomplete information with the purpose of avoiding or reducing workers' compensation premiums.
<a href="#">624.401(4)(b)2.</a>	2nd	Transacting insurance without a certificate or authority; premium collected \$20,000 or more but less than \$100,000.
<a href="#">626.902(1)(c)</a>	2nd	Representing an unauthorized insurer; repeat offender.
<a href="#">790.01(2)</a>	3rd	Carrying a concealed firearm.
<a href="#">790.162</a>	2nd	Threat to throw or discharge destructive device.
<a href="#">790.163(1)</a>	2nd	False report of deadly explosive or weapon of mass destruction.
<a href="#">790.221(1)</a>	2nd	Possession of short-barreled shotgun or machine gun.
<a href="#">790.23</a>	2nd	Felons in possession of firearms, ammunition, or electronic weapons or devices.
<a href="#">800.04(6)(c)</a>	3rd	Lewd or lascivious conduct; offender less than 18 years.
<a href="#">800.04(7)(b)</a>	2nd	Lewd or lascivious exhibition; offender 18 years or older.

<a href="#">806.111(1)</a>	3rd	Possess, manufacture, or dispense fire bomb with intent to damage any structure or property.
<a href="#">812.0145(2)(b)</a>	2nd	Theft from person 65 years of age or older; \$10,000 or more but less than \$50,000.
<a href="#">812.015(8)</a>	3rd	Retail theft; property stolen is valued at \$300 or more and one or more specified acts.
<a href="#">812.019(1)</a>	2nd	Stolen property; dealing in or trafficking in.
<a href="#">812.131(2)(b)</a>	3rd	Robbery by sudden snatching.
<a href="#">812.16(2)</a>	3rd	Owning, operating, or conducting a chop shop.
<a href="#">817.034(4)(a)2.</a>	2nd	Communications fraud, value \$20,000 to \$50,000.
<a href="#">817.234(11)(b)</a>	2nd	Insurance fraud; property value \$20,000 or more but less than \$100,000.
<a href="#">817.2341(1), (2)(a) &amp; (3)(a)</a>	3rd	Filing false financial statements, making false entries of material fact or false statements regarding property values relating to the solvency of an insuring entity.
<a href="#">817.568(2)(b)</a>	2nd	Fraudulent use of personal identification information; value of benefit, services received, payment avoided, or amount of injury or fraud, \$5,000 or more or use of personal identification information of 10 or more individuals.
<a href="#">817.625(2)(b)</a>	2nd	Second or subsequent fraudulent use of scanning device or reencoder.
<a href="#">825.1025(4)</a>	3rd	Lewd or lascivious exhibition in the presence of an elderly person or disabled adult.
<a href="#">827.071(4)</a>	2nd	Possess with intent to promote any photographic material, motion picture, etc., which includes sexual conduct by a child.
827.071(5)	3rd	Possess any photographic material, motion picture, etc., which includes sexual conduct by a child.
<a href="#">839.13(2)(b)</a>	2nd	Falsifying records of an individual in the care and custody of a state agency involving great bodily harm or death.
<a href="#">843.01</a>	3rd	Resist officer with violence to person; resist arrest with violence.
847.0135(5)(b)	2nd	Lewd or lascivious exhibition using computer; offender 18 years or older.
847.0137(2) & (3)	3rd	Transmission of pornography by electronic device or equipment.
847.0138(2) & (3)	3rd	Transmission of material harmful to minors to a minor by electronic device or equipment.
<a href="#">874.05(2)</a>	2nd	Encouraging or recruiting another to join a criminal gang; second or subsequent offense.
<a href="#">893.13(1)(a)1.</a>	2nd	<a href="#">Sell, manufacture, or deliver cocaine (or other s. 893.03(1)(a), (1)(b), (1)(d), (2)(a), (2)(b), or (2)(c)4. drugs).</a>
<a href="#">893.13(1)(c)2.</a>	2nd	<a href="#">Sell, manufacture, or deliver cannabis (or other s. 893.03(1)(c), (2)(c)1., (2)(c)2., (2)(c)3., (2)(c)5., (2)(c)6., (2)(c)7., (2)(c)8., (2)(c)9., (3), or (4) drugs) within 1,000 feet of a child care facility, school, or state, county, or municipal park or publicly owned recreational facility or community center.</a>

<a href="#">893.13(1)(d)1.</a>	1st	<a href="#">Sell, manufacture, or deliver cocaine (or other s. 893.03(1)(a), (1)(b), (1)(d), (2)(a), (2)(b), or (2)(c)4. drugs) within 1,000 feet of university.</a>
<a href="#">893.13(1)(e)2.</a>	2nd	<a href="#">Sell, manufacture, or deliver cannabis or other drug prohibited under s. 893.03(1)(c), (2)(c)1., (2)(c)2., (2)(c)3., (2)(c)5., (2)(c)6., (2)(c)7., (2)(c)8., (2)(c)9., (3), or (4) within 1,000 feet of property used for religious services or a specified business site.</a>
<a href="#">893.13(1)(f)1.</a>	1st	<a href="#">Sell, manufacture, or deliver cocaine (or other s. 893.03(1)(a), (1)(b), (1)(d), or (2)(a), (2)(b), or (2)(c)4. drugs) within 1,000 feet of public housing facility.</a>
<a href="#">893.13(4)(b)</a>	2nd	<a href="#">Deliver to minor cannabis (or other s. 893.03(1)(c), (2)(c)1., (2)(c)2., (2)(c)3., (2)(c)5., (2)(c)6., (2)(c)7., (2)(c)8., (2)(c)9., (3), or (4) drugs).</a>
893.1351(1)	3rd	Ownership, lease, or rental for trafficking in or manufacturing of controlled substance.

**(f) LEVEL 6**

<a href="#">316.193(2)(b)</a>	3rd	Felony DUI, 4th or subsequent conviction.
<a href="#">499.0051(3)</a>	2nd	Knowing forgery of pedigree papers.
<a href="#">499.0051(4)</a>	2nd	Knowing purchase or receipt of prescription drug from unauthorized person.
<a href="#">499.0051(5)</a>	2nd	Knowing sale or transfer of prescription drug to unauthorized person.
<a href="#">775.0875(1)</a>	3rd	Taking firearm from law enforcement officer.
<a href="#">784.021(1)(a)</a>	3rd	Aggravated assault; deadly weapon without intent to kill.
<a href="#">784.021(1)(b)</a>	3rd	Aggravated assault; intent to commit felony.
<a href="#">784.041</a>	3rd	Felony battery; domestic battery by strangulation.
<a href="#">784.048(3)</a>	3rd	Aggravated stalking; credible threat.
<a href="#">784.048(5)</a>	3rd	Aggravated stalking of person under 16.
<a href="#">784.07(2)(c)</a>	2nd	Aggravated assault on law enforcement officer.
<a href="#">784.074(1)(b)</a>	2nd	Aggravated assault on sexually violent predators facility staff.
<a href="#">784.08(2)(b)</a>	2nd	Aggravated assault on a person 65 years of age or older.
<a href="#">784.081(2)</a>	2nd	Aggravated assault on specified official or employee.
<a href="#">784.082(2)</a>	2nd	Aggravated assault by detained person on visitor or other detainee.
<a href="#">784.083(2)</a>	2nd	Aggravated assault on code inspector.
<a href="#">787.02(2)</a>	3rd	<a href="#">False imprisonment; restraining with purpose other than those in s. 787.01.</a>
<a href="#">790.115(2)(d)</a>	2nd	Discharging firearm or weapon on school property.
<a href="#">790.161(2)</a>	2nd	Make, possess, or throw destructive device with intent to do bodily harm or damage property.
<a href="#">790.164(1)</a>	2nd	False report of deadly explosive, weapon of mass destruction, or act of arson or violence to state property.

<a href="#">790.19</a>	2nd	Shooting or throwing deadly missiles into dwellings, vessels, or vehicles.
<a href="#">794.011(8)(a)</a>	3rd	Solicitation of minor to participate in sexual activity by custodial adult.
<a href="#">794.05(1)</a>	2nd	Unlawful sexual activity with specified minor.
<a href="#">800.04(5)(d)</a>	3rd	Lewd or lascivious molestation; victim 12 years of age or older but less than 16 years; offender less than 18 years.
<a href="#">800.04(6)(b)</a>	2nd	Lewd or lascivious conduct; offender 18 years of age or older.
<a href="#">806.031(2)</a>	2nd	Arson resulting in great bodily harm to firefighter or any other person.
<a href="#">810.02(3)(c)</a>	2nd	Burglary of occupied structure; unarmed; no assault or battery.
<a href="#">812.014(2)(b)1.</a>	2nd	Property stolen \$20,000 or more, but less than \$100,000, grand theft in 2nd degree.
812.014(6)	2nd	Theft; property stolen \$3,000 or more; coordination of others.
<a href="#">812.015(9)(a)</a>	2nd	Retail theft; property stolen \$300 or more; second or subsequent conviction.
<a href="#">812.015(9)(b)</a>	2nd	Retail theft; property stolen \$3,000 or more; coordination of others.
<a href="#">812.13(2)(c)</a>	2nd	Robbery, no firearm or other weapon (strong-arm robbery).
<a href="#">817.034(4)(a)1.</a>	1st	Communications fraud, value greater than \$50,000.
<a href="#">817.4821(5)</a>	2nd	Possess cloning paraphernalia with intent to create cloned cellular telephones.
<a href="#">825.102(1)</a>	3rd	Abuse of an elderly person or disabled adult.
<a href="#">825.102(3)(c)</a>	3rd	Neglect of an elderly person or disabled adult.
<a href="#">825.1025(3)</a>	3rd	Lewd or lascivious molestation of an elderly person or disabled adult.
<a href="#">825.103(2)(c)</a>	3rd	Exploiting an elderly person or disabled adult and property is valued at less than \$20,000.
<a href="#">827.03(1)</a>	3rd	Abuse of a child.
<a href="#">827.03(3)(c)</a>	3rd	Neglect of a child.
<a href="#">827.071(2) &amp; (3)</a>	2nd	Use or induce a child in a sexual performance, or promote or direct such performance.
<a href="#">836.05</a>	2nd	Threats; extortion.
<a href="#">836.1</a>	2nd	Written threats to kill or do bodily injury.
<a href="#">843.12</a>	3rd	Aids or assists person to escape.
847.011	3rd	Distributing, offering to distribute, or possessing with intent to distribute obscene materials depicting minors.
847.012	3rd	Knowingly using a minor in the production of materials harmful to minors.
<a href="#">847.0135(2)</a>	3rd	Facilitates sexual conduct of or with a minor or the visual depiction of such conduct.
<a href="#">914.23</a>	2nd	Retaliation against a witness, victim, or informant, with bodily injury.

<a href="#">944.35(3)(a)2.</a>	3rd	Committing malicious battery upon or inflicting cruel or inhuman treatment on an inmate or offender on community supervision, resulting in great bodily harm.
<a href="#">944.4</a>	2nd	Escapes.
<a href="#">944.46</a>	3rd	Harboring, concealing, aiding escaped prisoners.
<a href="#">944.47(1)(a)5.</a>	2nd	Introduction of contraband (firearm, weapon, or explosive) into correctional facility.
<a href="#">951.22(1)</a>	3rd	Intoxicating drug, firearm, or weapon introduced into county facility.

**(g) LEVEL 7**

<a href="#">316.027(1)(b)</a>	1st	Accident involving death, failure to stop; leaving scene.
<a href="#">316.193(3)(c)2.</a>	3rd	DUI resulting in serious bodily injury.
<a href="#">316.1935(3)(b)</a>	1st	Causing serious bodily injury or death to another person; driving at high speed or with wanton disregard for safety while fleeing or attempting to elude law enforcement officer who is in a patrol vehicle with siren and lights activated.
<a href="#">327.35(3)(c)2.</a>	3rd	Vessel BUI resulting in serious bodily injury.
<a href="#">402.319(2)</a>	2nd	Misrepresentation and negligence or intentional act resulting in great bodily harm, permanent disfigurement, permanent disability, or death.
<a href="#">409.920(2)(b)1.a.</a>	3rd	Medicaid provider fraud; \$10,000 or less.
<a href="#">409.920(2)(b)1.b.</a>	2nd	Medicaid provider fraud; more than \$10,000, but less than \$50,000.
<a href="#">456.065(2)</a>	3rd	Practicing a health care profession without a license.
<a href="#">456.065(2)</a>	2nd	Practicing a health care profession without a license which results in serious bodily injury.
<a href="#">458.327(1)</a>	3rd	Practicing medicine without a license.
<a href="#">459.013(1)</a>	3rd	Practicing osteopathic medicine without a license.
<a href="#">460.411(1)</a>	3rd	Practicing chiropractic medicine without a license.
<a href="#">461.012(1)</a>	3rd	Practicing podiatric medicine without a license.
<a href="#">462.17</a>	3rd	Practicing naturopathy without a license.
<a href="#">463.015(1)</a>	3rd	Practicing optometry without a license.
<a href="#">464.016(1)</a>	3rd	Practicing nursing without a license.
<a href="#">465.015(2)</a>	3rd	Practicing pharmacy without a license.
<a href="#">466.026(1)</a>	3rd	Practicing dentistry or dental hygiene without a license.
<a href="#">467.201</a>	3rd	Practicing midwifery without a license.
<a href="#">468.366</a>	3rd	Delivering respiratory care services without a license.
<a href="#">483.828(1)</a>	3rd	Practicing as clinical laboratory personnel without a license.
<a href="#">483.901(9)</a>	3rd	Practicing medical physics without a license.

<a href="#">484.013(1)(c)</a>	3rd	Preparing or dispensing optical devices without a prescription.
<a href="#">484.053</a>	3rd	Dispensing hearing aids without a license.
<a href="#">494.0018(2)</a>	1st	<a href="#">Conviction of any violation of ss. 494.001-494.0077 in which the total money and property unlawfully obtained exceeded \$50,000 and there were five or more victims.</a>
<a href="#">560.123(8)(b)1.</a>	3rd	Failure to report currency or payment instruments exceeding \$300 but less than \$20,000 by a money services business.
<a href="#">560.125(5)(a)</a>	3rd	Money services business by unauthorized person, currency or payment instruments exceeding \$300 but less than \$20,000.
<a href="#">655.50(10)(b)1.</a>	3rd	Failure to report financial transactions exceeding \$300 but less than \$20,000 by financial institution.
775.21(10)(a)	3rd	Sexual predator; failure to register; failure to renew driver's license or identification card; other registration violations.
775.21(10)(b)	3rd	Sexual predator working where children regularly congregate.
775.21(10)(g)	3rd	Failure to report or providing false information about a sexual predator; harbor or conceal a sexual predator.
<a href="#">782.051(3)</a>	2nd	Attempted felony murder of a person by a person other than the perpetrator or the perpetrator of an attempted felony.
<a href="#">782.07(1)</a>	2nd	Killing of a human being by the act, procurement, or culpable negligence of another (manslaughter).
<a href="#">782.071</a>	2nd	Killing of a human being or viable fetus by the operation of a motor vehicle in a reckless manner (vehicular homicide).
<a href="#">782.072</a>	2nd	Killing of a human being by the operation of a vessel in a reckless manner (vessel homicide).
<a href="#">784.045(1)(a)1.</a>	2nd	Aggravated battery; intentionally causing great bodily harm or disfigurement.
<a href="#">784.045(1)(a)2.</a>	2nd	Aggravated battery; using deadly weapon.
<a href="#">784.045(1)(b)</a>	2nd	Aggravated battery; perpetrator aware victim pregnant.
<a href="#">784.048(4)</a>	3rd	Aggravated stalking; violation of injunction or court order.
<a href="#">784.048(7)</a>	3rd	Aggravated stalking; violation of court order.
<a href="#">784.07(2)(d)</a>	1st	Aggravated battery on law enforcement officer.
<a href="#">784.074(1)(a)</a>	1st	Aggravated battery on sexually violent predators facility staff.
<a href="#">784.08(2)(a)</a>	1st	Aggravated battery on a person 65 years of age or older.
<a href="#">784.081(1)</a>	1st	Aggravated battery on specified official or employee.
<a href="#">784.082(1)</a>	1st	Aggravated battery by detained person on visitor or other detainee.
<a href="#">784.083(1)</a>	1st	Aggravated battery on code inspector.
<a href="#">790.07(4)</a>	1st	<a href="#">Specified weapons violation subsequent to previous conviction of s. 790.07(1) or (2).</a>



<a href="#">790.16(1)</a>	1st	Discharge of a machine gun under specified circumstances.
<a href="#">790.165(2)</a>	2nd	Manufacture, sell, possess, or deliver hoax bomb.
<a href="#">790.165(3)</a>	2nd	Possessing, displaying, or threatening to use any hoax bomb while committing or attempting to commit a felony.
<a href="#">790.166(3)</a>	2nd	Possessing, selling, using, or attempting to use a hoax weapon of mass destruction.
<a href="#">790.166(4)</a>	2nd	Possessing, displaying, or threatening to use a hoax weapon of mass destruction while committing or attempting to commit a felony.
790.23	1st,PBL	Possession of a firearm by a person who qualifies for the penalty enhancements provided for in s. 874.04.
794.08(4)	3rd	Female genital mutilation; consent by a parent, guardian, or a person in custodial authority to a victim younger than 18 years of age.
<a href="#">796.03</a>	2nd	Procuring any person under 16 years for prostitution.
<a href="#">800.04(5)(c)1.</a>	2nd	Lewd or lascivious molestation; victim less than 12 years of age; offender less than 18 years.
<a href="#">800.04(5)(c)2.</a>	2nd	Lewd or lascivious molestation; victim 12 years of age or older but less than 16 years; offender 18 years or older.
<a href="#">806.01(2)</a>	2nd	Maliciously damage structure by fire or explosive.
<a href="#">810.02(3)(a)</a>	2nd	Burglary of occupied dwelling; unarmed; no assault or battery.
<a href="#">810.02(3)(b)</a>	2nd	Burglary of unoccupied dwelling; unarmed; no assault or battery.
<a href="#">810.02(3)(d)</a>	2nd	Burglary of occupied conveyance; unarmed; no assault or battery.
810.02(3)(e)	2nd	Burglary of authorized emergency vehicle.
<a href="#">812.014(2)(a)1.</a>	1st	Property stolen, valued at \$100,000 or more or a semitrailer deployed by a law enforcement officer; property stolen while causing other property damage; 1st degree grand theft.
<a href="#">812.014(2)(b)2.</a>	2nd	Property stolen, cargo valued at less than \$50,000, grand theft in 2nd degree.
<a href="#">812.014(2)(b)3.</a>	2nd	Property stolen, emergency medical equipment; 2nd degree grand theft.
<a href="#">812.014(2)(b)4.</a>	2nd	Property stolen; law enforcement equipment from authorized emergency vehicle.
<a href="#">812.0145(2)(a)</a>	1st	Theft from person 65 years of age or older; \$50,000 or more.
<a href="#">812.019(2)</a>	1st	Stolen property; initiates, organizes, plans, etc., the theft of property and traffics in stolen property.
<a href="#">812.131(2)(a)</a>	2nd	Robbery by sudden snatching.
<a href="#">812.133(2)(b)</a>	1st	Carjacking; no firearm, deadly weapon, or other weapon.
<a href="#">817.234(8)(a)</a>	2nd	Solicitation of motor vehicle accident victims with intent to defraud.
<a href="#">817.234(9)</a>	2nd	Organizing, planning, or participating in an intentional motor vehicle collision.

<a href="#">817.234(11)(c)</a>	1st	Insurance fraud; property value \$100,000 or more.
<a href="#">817.234(2)(b) &amp; (3)(b)</a>	1st	Making false entries of material fact or false statements regarding property values relating to the solvency of an insuring entity which are a significant cause of the insolvency of that entity.
<a href="#">825.102(3)(b)</a>	2nd	Neglecting an elderly person or disabled adult causing great bodily harm, disability, or disfigurement.
<a href="#">825.103(2)(b)</a>	2nd	Exploiting an elderly person or disabled adult and property is valued at \$20,000 or more, but less than \$100,000.
<a href="#">827.03(3)(b)</a>	2nd	Neglect of a child causing great bodily harm, disability, or disfigurement.
<a href="#">827.04(3)</a>	3rd	Impregnation of a child under 16 years of age by person 21 years of age or older.
<a href="#">837.05(2)</a>	3rd	Giving false information about alleged capital felony to a law enforcement officer.
<a href="#">838.015</a>	2nd	Bribery.
<a href="#">838.016</a>	2nd	Unlawful compensation or reward for official behavior.
<a href="#">838.021(3)(a)</a>	2nd	Unlawful harm to a public servant.
<a href="#">838.22</a>	2nd	Bid tampering.
847.0135(3)	3rd	Solicitation of a child, via a computer service, to commit an unlawful sex act.
847.0135(4)	2nd	Traveling to meet a minor to commit an unlawful sex act.
<a href="#">872.06</a>	2nd	Abuse of a dead human body.
874.1	1st,PBL	Knowingly initiates, organizes, plans, finances, directs, manages, or supervises criminal gang-related activity.
<a href="#">893.13(1)(c)1.</a>	1st	<a href="#">Sell, manufacture, or deliver cocaine (or other drug prohibited under s. 893.03(1)(a), (1)(b), (1)(d), (2)(a), (2)(b), or (2)(c)4.) within 1,000 feet of a child care facility, school, or state, county, or municipal park or publicly owned recreational facility or community center.</a>
<a href="#">893.13(1)(e)1.</a>	1st	<a href="#">Sell, manufacture, or deliver cocaine or other drug prohibited under s. 893.03(1)(a), (1)(b), (1)(d), (2)(a), (2)(b), or (2)(c)4., within 1,000 feet of property used for religious services or a specified business site.</a>
<a href="#">893.13(4)(a)</a>	1st	<a href="#">Deliver to minor cocaine (or other s. 893.03(1)(a), (1)(b), (1)(d), (2)(a), (2)(b), or (2)(c)4. drugs).</a>
<a href="#">893.135(1)(a)1.</a>	1st	Trafficking in cannabis, more than 25 lbs., less than 2,000 lbs.
<a href="#">893.135(1)(b)1.a.</a>	1st	Trafficking in cocaine, more than 28 grams, less than 200 grams.
<a href="#">893.135(1)(c)1.a.</a>	1st	Trafficking in illegal drugs, more than 4 grams, less than 14 grams.
<a href="#">893.135(1)(d)1.</a>	1st	Trafficking in phencyclidine, more than 28 grams, less than 200 grams.
<a href="#">893.135(1)(e)1.</a>	1st	Trafficking in methaqualone, more than 200 grams, less than 5 kilograms.
<a href="#">893.135(1)(f)1.</a>	1st	Trafficking in amphetamine, more than 14 grams, less than 28 grams.



<a href="#">893.135(1)(g)1.a.</a>	1st	Trafficking in flunitrazepam, 4 grams or more, less than 14 grams.
<a href="#">893.135(1)(h)1.a.</a>	1st	Trafficking in gamma-hydroxybutyric acid (GHB), 1 kilogram or more, less than 5 kilograms.
<a href="#">893.135(1)(j)1.a.</a>	1st	Trafficking in 1,4-Butanediol, 1 kilogram or more, less than 5 kilograms.
<a href="#">893.135(1)(k)2.a.</a>	1st	Trafficking in Phenethylamines, 10 grams or more, less than 200 grams.
893.1351(2)	2nd	Possession of place for trafficking in or manufacturing of controlled substance.
<a href="#">896.101(5)(a)</a>	3rd	Money laundering, financial transactions exceeding \$300 but less than \$20,000.
<a href="#">896.104(4)(a)1.</a>	3rd	Structuring transactions to evade reporting or registration requirements, financial transactions exceeding \$300 but less than \$20,000.
943.0435(4)(c)	2nd	Sexual offender vacating permanent residence; failure to comply with reporting requirements.
943.0435(8)	2nd	Sexual offender; remains in state after indicating intent to leave; failure to comply with reporting requirements.
943.0435(9)(a)	3rd	Sexual offender; failure to comply with reporting requirements.
943.0435(13)	3rd	Failure to report or providing false information about a sexual offender; harbor or conceal a sexual offender.
943.0435(14)	3rd	Sexual offender; failure to report and reregister; failure to respond to address verification.
944.607(9)	3rd	Sexual offender; failure to comply with reporting requirements.
944.607(10)(a)	3rd	Sexual offender; failure to submit to the taking of a digitized photograph.
944.607(12)	3rd	Failure to report or providing false information about a sexual offender; harbor or conceal a sexual offender.
944.607(13)	3rd	Sexual offender; failure to report and reregister; failure to respond to address verification.
985.4815(10)	3rd	Sexual offender; failure to submit to the taking of a digitized photograph.
985.4815(12)	3rd	Failure to report or providing false information about a sexual offender; harbor or conceal a sexual offender.
985.4815(13)	3rd	Sexual offender; failure to report and reregister; failure to respond to address verification.

**(h) LEVEL 8**

<a href="#">316.193(3)(c)3.a.</a>	2nd	DUI manslaughter.
<a href="#">316.1935(4)(b)</a>	1st	Aggravated fleeing or attempted eluding with serious bodily injury or death.
<a href="#">327.35(3)(c)3.</a>	2nd	Vessel BUI manslaughter.
<a href="#">499.0051(7)</a>	1st	Knowing trafficking in contraband prescription drugs.
<a href="#">499.0051(8)</a>	1st	Knowing forgery of prescription labels or prescription drug labels. Failure to report currency or payment instruments totaling or exceeding

<a href="#">560.123(8)(b)2.</a>	2nd	\$20,000, but less than \$100,000 by money transmitter.
<a href="#">560.125(5)(b)</a>	2nd	Money transmitter business by unauthorized person, currency or payment instruments totaling or exceeding \$20,000, but less than \$100,000.
<a href="#">655.50(10)(b)2.</a>	2nd	Failure to report financial transactions totaling or exceeding \$20,000, but less than \$100,000 by financial institutions.
<a href="#">777.03(2)(a)</a>	1st	Accessory after the fact, capital felony.
<a href="#">782.04(4)</a>	2nd	Killing of human without design when engaged in act or attempt of any felony other than arson, sexual battery, robbery, burglary, kidnapping, aircraft piracy, or unlawfully discharging bomb.
<a href="#">782.051(2)</a>	1st	<a href="#">Attempted felony murder while perpetrating or attempting to perpetrate a felony not enumerated in s. 782.04(3).</a>
<a href="#">782.071(1)(b)</a>	1st	Committing vehicular homicide and failing to render aid or give information.
<a href="#">782.072(2)</a>	1st	Committing vessel homicide and failing to render aid or give information.
<a href="#">790.161(3)</a>	1st	Discharging a destructive device which results in bodily harm or property damage.
<a href="#">794.011(5)</a>	2nd	Sexual battery, victim 12 years or over, offender does not use physical force likely to cause serious injury.
794.08(3)	2nd	Female genital mutilation; removal of a victim younger than 18 years of age from this state.
<a href="#">800.04(4)</a>	2nd	Lewd or lascivious battery.
<a href="#">806.01(1)</a>	1st	Maliciously damage dwelling or structure by fire or explosive, believing person in structure.
<a href="#">810.02(2)(a)</a>	1st,PBL	Burglary with assault or battery.
<a href="#">810.02(2)(b)</a>	1st,PBL	Burglary; armed with explosives or dangerous weapon.
<a href="#">810.02(2)(c)</a>	1st	Burglary of a dwelling or structure causing structural damage or \$1,000 or more property damage.
<a href="#">812.014(2)(a)2.</a>	1st	Property stolen; cargo valued at \$50,000 or more, grand theft in 1st degree.
<a href="#">812.13(2)(b)</a>	1st	Robbery with a weapon.
<a href="#">812.135(2)(c)</a>	1st	Home-invasion robbery, no firearm, deadly weapon, or other weapon.
<a href="#">817.568(6)</a>	2nd	Fraudulent use of personal identification information of an individual under the age of 18.
<a href="#">825.102(2)</a>	1st	Aggravated abuse of an elderly person or disabled adult.
<a href="#">825.1025(2)</a>	2nd	Lewd or lascivious battery upon an elderly person or disabled adult.
<a href="#">825.103(2)(a)</a>	1st	Exploiting an elderly person or disabled adult and property is valued at \$100,000 or more.
<a href="#">837.02(2)</a>	2nd	Perjury in official proceedings relating to prosecution of a capital felony. Making contradictory statements in official proceedings relating to

<a href="#">837.021(2)</a>	2nd	prosecution of a capital felony.
<a href="#">860.121(2)(c)</a>	1st	Shooting at or throwing any object in path of railroad vehicle resulting in great bodily harm.
<a href="#">860.16</a>	1st	Aircraft piracy.
<a href="#">893.13(1)(b)</a>	1st	<a href="#">Sell or deliver in excess of 10 grams of any substance specified in s. 893.03(1)(a) or (b).</a>
<a href="#">893.13(2)(b)</a>	1st	<a href="#">Purchase in excess of 10 grams of any substance specified in s. 893.03(1)(a) or (b).</a>
<a href="#">893.13(6)(c)</a>	1st	<a href="#">Possess in excess of 10 grams of any substance specified in s. 893.03(1)(a) or (b).</a>
<a href="#">893.135(1)(a)2.</a>	1st	Trafficking in cannabis, more than 2,000 lbs., less than 10,000 lbs.
<a href="#">893.135(1)(b)1.b.</a>	1st	Trafficking in cocaine, more than 200 grams, less than 400 grams.
<a href="#">893.135(1)(c)1.b.</a>	1st	Trafficking in illegal drugs, more than 14 grams, less than 28 grams.
<a href="#">893.135(1)(d)1.b.</a>	1st	Trafficking in phencyclidine, more than 200 grams, less than 400 grams.
<a href="#">893.135(1)(e)1.b.</a>	1st	Trafficking in methaqualone, more than 5 kilograms, less than 25 kilograms.
<a href="#">893.135(1)(f)1.b.</a>	1st	Trafficking in amphetamine, more than 28 grams, less than 200 grams.
<a href="#">893.135(1)(g)1.b.</a>	1st	Trafficking in flunitrazepam, 14 grams or more, less than 28 grams.
<a href="#">893.135(1)(h)1.b.</a>	1st	Trafficking in gamma-hydroxybutyric acid (GHB), 5 kilograms or more, less than 10 kilograms.
<a href="#">893.135(1)(j)1.b.</a>	1st	Trafficking in 1,4-Butanediol, 5 kilograms or more, less than 10 kilograms.
<a href="#">893.135(1)(k)2.b.</a>	1st	Trafficking in Phenethylamines, 200 grams or more, less than 400 grams.
<a href="#">893.1351(3)</a>	1st	Possession of a place used to manufacture controlled substance when minor is present or resides there.
<a href="#">895.03(1)</a>	1st	Use or invest proceeds derived from pattern of racketeering activity.
<a href="#">895.03(2)</a>	1st	Acquire or maintain through racketeering activity any interest in or control of any enterprise or real property.
<a href="#">895.03(3)</a>	1st	Conduct or participate in any enterprise through pattern of racketeering activity.
<a href="#">896.101(5)(b)</a>	2nd	Money laundering, financial transactions totaling or exceeding \$20,000, but less than \$100,000.
<a href="#">896.104(4)(a)2.</a>	2nd	Structuring transactions to evade reporting or registration requirements, financial transactions totaling or exceeding \$20,000 but less than \$100,000.

**(i) LEVEL 9**

<a href="#">316.193(3)(c)3.b.</a>	1st	DUI manslaughter; failing to render aid or give information.
<a href="#">327.35(3)(c)3.b.</a>	1st	BUI manslaughter; failing to render aid or give information.

409.920(2)(b)1.c.	1st	Medicaid provider fraud; \$50,000 or more.
499.0051(9)	1st	Knowing sale or purchase of contraband prescription drugs resulting in great bodily harm.
<a href="#">560.123(8)(b)3.</a>	1st	Failure to report currency or payment instruments totaling or exceeding \$100,000 by money transmitter.
<a href="#">560.125(5)(c)</a>	1st	Money transmitter business by unauthorized person, currency, or payment instruments totaling or exceeding \$100,000.
<a href="#">655.50(10)(b)3.</a>	1st	Failure to report financial transactions totaling or exceeding \$100,000 by financial institution.
<a href="#">775.0844</a>	1st	Aggravated white collar crime.
<a href="#">782.04(1)</a>	1st	Attempt, conspire, or solicit to commit premeditated murder.
<a href="#">782.04(3)</a>	1st,PBL	Accomplice to murder in connection with arson, sexual battery, robbery, burglary, and other specified felonies.
<a href="#">782.051(1)</a>	1st	<a href="#">Attempted felony murder while perpetrating or attempting to perpetrate a felony enumerated in s. 782.04(3).</a>
<a href="#">782.07(2)</a>	1st	Aggravated manslaughter of an elderly person or disabled adult.
<a href="#">787.01(1)(a)1.</a>	1st,PBL	Kidnapping; hold for ransom or reward or as a shield or hostage.
<a href="#">787.01(1)(a)2.</a>	1st,PBL	Kidnapping with intent to commit or facilitate commission of any felony.
<a href="#">787.01(1)(a)4.</a>	1st,PBL	Kidnapping with intent to interfere with performance of any governmental or political function.
<a href="#">787.02(3)(a)</a>	1st	False imprisonment; child under age 13; perpetrator also commits aggravated child abuse, sexual battery, or lewd or lascivious battery, molestation, conduct, or exhibition.
<a href="#">790.161</a>	1st	Attempted capital destructive device offense.
<a href="#">790.166(2)</a>	1st,PBL	Possessing, selling, using, or attempting to use a weapon of mass destruction.
<a href="#">794.011(2)</a>	1st	Attempted sexual battery; victim less than 12 years of age.
<a href="#">794.011(2)</a>	Life	Sexual battery; offender younger than 18 years and commits sexual battery on a person less than 12 years.
<a href="#">794.011(4)</a>	1st	Sexual battery; victim 12 years or older, certain circumstances.
<a href="#">794.011(8)(b)</a>	1st	Sexual battery; engage in sexual conduct with minor 12 to 18 years by person in familial or custodial authority.
794.08(2)	1st	Female genital mutilation; victim younger than 18 years of age.
<a href="#">800.04(5)(b)</a>	Life	Lewd or lascivious molestation; victim less than 12 years; offender 18 years or older.
<a href="#">812.13(2)(a)</a>	1st,PBL	Robbery with firearm or other deadly weapon.
<a href="#">812.133(2)(a)</a>	1st,PBL	Carjacking; firearm or other deadly weapon.
<a href="#">812.135(2)(b)</a>	1st	Home-invasion robbery with weapon.

<a href="#">817.568(7)</a>	2nd,PBL	Fraudulent use of personal identification information of an individual under the age of 18 by his or her parent, legal guardian, or person exercising custodial authority.
<a href="#">827.03(2)</a>	1st	Aggravated child abuse.
<a href="#">847.0145(1)</a>	1st	Selling, or otherwise transferring custody or control, of a minor.
<a href="#">847.0145(2)</a>	1st	Purchasing, or otherwise obtaining custody or control, of a minor.
<a href="#">859.01</a>	1st	Poisoning or introducing bacteria, radioactive materials, viruses, or chemical compounds into food, drink, medicine, or water with intent to kill or injure another person.
<a href="#">893.135</a>	1st	Attempted capital trafficking offense.
<a href="#">893.135(1)(a)3.</a>	1st	Trafficking in cannabis, more than 10,000 lbs.
<a href="#">893.135(1)(b)1.c.</a>	1st	Trafficking in cocaine, more than 400 grams, less than 150 kilograms.
<a href="#">893.135(1)(c)1.c.</a>	1st	Trafficking in illegal drugs, more than 28 grams, less than 30 kilograms.
<a href="#">893.135(1)(d)1.c.</a>	1st	Trafficking in phencyclidine, more than 400 grams.
<a href="#">893.135(1)(e)1.c.</a>	1st	Trafficking in methaqualone, more than 25 kilograms.
<a href="#">893.135(1)(f)1.c.</a>	1st	Trafficking in amphetamine, more than 200 grams.
<a href="#">893.135(1)(h)1.c.</a>	1st	Trafficking in gamma-hydroxybutyric acid (GHB), 10 kilograms or more.
<a href="#">893.135(1)(j)1.c.</a>	1st	Trafficking in 1,4-Butanediol, 10 kilograms or more.
<a href="#">893.135(1)(k)2.c.</a>	1st	Trafficking in Phenethylamines, 400 grams or more.
<a href="#">896.101(5)(c)</a>	1st	Money laundering, financial instruments totaling or exceeding \$100,000.
<a href="#">896.104(4)(a)3.</a>	1st	Structuring transactions to evade reporting or registration requirements, financial transactions totaling or exceeding \$100,000.

**(j) LEVEL 10**

499.0051(10)	1st	Knowing sale or purchase of contraband prescription drugs resulting in death.
<a href="#">782.04(2)</a>	1st,PBL	Unlawful killing of human; act is homicide, unpremeditated.
<a href="#">787.01(1)(a)3.</a>	1st,PBL	Kidnapping; inflict bodily harm upon or terrorize victim.
<a href="#">787.01(3)(a)</a>	Life	Kidnapping; child under age 13, perpetrator also commits aggravated child abuse, sexual battery, or lewd or lascivious battery, molestation, conduct, or exhibition.
<a href="#">782.07(3)</a>	1st	Aggravated manslaughter of a child.
<a href="#">794.011(3)</a>	Life	Sexual battery; victim 12 years or older, offender uses or threatens to use deadly weapon or physical force to cause serious injury.
<a href="#">812.135(2)(a)</a>	1st,PBL	Home-invasion robbery with firearm or other deadly weapon.
<a href="#">876.32</a>	1st	Treason against the state.



## Error processing SSI file

[Skip navigation.](#) Error processing SSI file

Florida's Criminal Punishment Code:

A Comparative Assessment (FY 2009-2010)

[first](#) | [previous](#) | 14 of 14 | [next](#)

# Rule 3.992(a) Criminal Punishment Code Scoresheet

The Criminal Punishment Code Scoresheet is available in PDF format. If you need assistance viewing this file, please visit our [Accessibility](#) information.

[Download](#) the Criminal Punishment Code Scoresheet

Florida's Criminal Punishment Code:

A Comparative Assessment (FY 2009-2010)

[first](#) | [previous](#) | 14 of 14 | [next](#)

**Error processing SSI file**

## Rule 3.992(a) Criminal Punishment Code Scoresheet

The Criminal Punishment Code Scoresheet Preparation Manual is available at: [http://www.dc.state.fl.us/pub/sen\\_cpcm/index.html](http://www.dc.state.fl.us/pub/sen_cpcm/index.html)

1. DATE OF SENTENCE	2. PREPARER'S NAME	3. COUNTY	4. SENTENCING JUDGE	
5. NAME (LAST, FIRST, MI.L.)	6. DOB	8. RACE <input type="checkbox"/> B <input type="checkbox"/> W <input type="checkbox"/> OTHER	10. PRIMARY OFF. DATE	12. PLEA <input type="checkbox"/>
	7. DC #	9. GENDER <input type="checkbox"/> M <input type="checkbox"/> F	11. PRIMARY DOCKET #	TRIAL <input type="checkbox"/>

**I. PRIMARY OFFENSE:** If Qualifier, please check \_\_\_A\_\_\_S\_\_\_C\_\_\_R (A=Attempt, S=Solicitation, C=Conspiracy, R=Reclassification)

FELONY DEGREE	F.S.#	DESCRIPTION	OFFENSE LEVEL	POINTS
____/____/____	____/____	_____/_____/_____	____/____	_____
(Level - Points: 1=4, 2=10, 3=16, 4=22, 5=28, 6=36, 7=56, 8=74, 9=92, 10=116)				
Prior capital felony triples Primary Offense points <input type="checkbox"/>				<b>I.</b> _____

**II. ADDITIONAL OFFENSE(S):** Supplemental page attached

DOCKET#	FEL/MM DEGREE	F.S.#	OFFENSE LEVEL	QUALIFY A S C R	COUNTS	POINTS	TOTAL
____/____/____	____/____	____/____	____/____	<input type="checkbox"/> <input type="checkbox"/> <input type="checkbox"/> <input type="checkbox"/>	_____ x _____	_____ = _____	_____
DESCRIPTION _____							
____/____/____	____/____	____/____	____/____	<input type="checkbox"/> <input type="checkbox"/> <input type="checkbox"/> <input type="checkbox"/>	_____ X _____	_____ = _____	_____
DESCRIPTION _____							
____/____/____	____/____	____/____	____/____	<input type="checkbox"/> <input type="checkbox"/> <input type="checkbox"/> <input type="checkbox"/>	_____ X _____	_____ = _____	_____
DESCRIPTION _____							
____/____/____	____/____	____/____	____/____	<input type="checkbox"/> <input type="checkbox"/> <input type="checkbox"/> <input type="checkbox"/>	_____ x _____	_____ = _____	_____
DESCRIPTION _____							

(Level - Points: M=0.2, 1=0.7, 2=1.2, 3=2.4, 4=3.6, 5=5.4, 6=18, 7=28, 8=37, 9=46, 10=58)

Prior capital felony triples Additional Offense points  Supplemental page points \_\_\_\_\_ **II.** \_\_\_\_\_

**III. VICTIM INJURY:**

	Number	Total		Number	Total
2nd Degree Murder	240 x _____	= _____	Slight	4 x _____	= _____
Death	120 x _____	= _____	Sex Penetration	80 x _____	= _____
Severe	40 x _____	= _____	Sex Contact	40 x _____	= _____
Moderate	18 x _____	= _____			

**III.** \_\_\_\_\_

**IV. PRIOR RECORD:** Supplemental page attached

FEL/MM DEGREE	F.S.#	OFFENSE LEVEL	QUALIFY: A S C R	DESCRIPTION	NUMBER	POINTS	TOTAL
____/____/____	____/____	____/____	<input type="checkbox"/> <input type="checkbox"/> <input type="checkbox"/> <input type="checkbox"/>	_____	_____ X _____	_____ = _____	_____
____/____/____	____/____	____/____	<input type="checkbox"/> <input type="checkbox"/> <input type="checkbox"/> <input type="checkbox"/>	_____	_____ X _____	_____ = _____	_____
____/____/____	____/____	____/____	<input type="checkbox"/> <input type="checkbox"/> <input type="checkbox"/> <input type="checkbox"/>	_____	_____ X _____	_____ = _____	_____
____/____/____	____/____	____/____	<input type="checkbox"/> <input type="checkbox"/> <input type="checkbox"/> <input type="checkbox"/>	_____	_____ X _____	_____ = _____	_____
____/____/____	____/____	____/____	<input type="checkbox"/> <input type="checkbox"/> <input type="checkbox"/> <input type="checkbox"/>	_____	_____ X _____	_____ = _____	_____
____/____/____	____/____	____/____	<input type="checkbox"/> <input type="checkbox"/> <input type="checkbox"/> <input type="checkbox"/>	_____	_____ X _____	_____ = _____	_____
____/____/____	____/____	____/____	<input type="checkbox"/> <input type="checkbox"/> <input type="checkbox"/> <input type="checkbox"/>	_____	_____ X _____	_____ = _____	_____
____/____/____	____/____	____/____	<input type="checkbox"/> <input type="checkbox"/> <input type="checkbox"/> <input type="checkbox"/>	_____	_____ X _____	_____ = _____	_____

(Level = Points: M=0.2, 1=0.5, 2=0.8, 3=1.6, 4=2.4, 5=3.6, 6=9, 7=14, 8=19, 9=23, 10=29)

Supplemental page points \_\_\_\_\_

**IV.** \_\_\_\_\_

**Page 1 Subtotal:** \_\_\_\_\_





## RULE 3.992(b) Supplemental Criminal Punishment Code Scoresheet

NAME (LAST, FIRST, MI.)	DOCKET #	DATE OF SENTENCE
-------------------------	----------	------------------

**II. ADDITIONAL OFFENSES(S):**

DOCKET#	FEL/MM DEGREE	F.S#	OFFENSE LEVEL	QUALIFY A S C R	COUNTS	POINTS	TOTAL
_____ / _____	_____ / _____	_____ / _____	_____	<input type="checkbox"/> <input type="checkbox"/> <input type="checkbox"/> <input type="checkbox"/>	_____ x _____	_____ = _____	
DESCRIPTION _____							
_____ / _____	_____ / _____	_____ / _____	_____	<input type="checkbox"/> <input type="checkbox"/> <input type="checkbox"/> <input type="checkbox"/>	_____ x _____	_____ = _____	
DESCRIPTION _____							
_____ / _____	_____ / _____	_____ / _____	_____	<input type="checkbox"/> <input type="checkbox"/> <input type="checkbox"/> <input type="checkbox"/>	_____ x _____	_____ = _____	
DESCRIPTION _____							
_____ / _____	_____ / _____	_____ / _____	_____	<input type="checkbox"/> <input type="checkbox"/> <input type="checkbox"/> <input type="checkbox"/>	_____ x _____	_____ = _____	
DESCRIPTION _____							
_____ / _____	_____ / _____	_____ / _____	_____	<input type="checkbox"/> <input type="checkbox"/> <input type="checkbox"/> <input type="checkbox"/>	_____ x _____	_____ = _____	
DESCRIPTION _____							

(Level - Points: M=0.2, 1=0.7, 2=1.2, 3=2.4, 4=3.6, 5=5.4, 6=18, 7=28, 8=37, 9=46, 10=58)

II. \_\_\_\_\_

**IV. PRIOR RECORD**

FEL/MM DEGREE	F.S.#	OFFENSE LEVEL	QUALIFY: A S C R	DESCRIPTION	NUMBER	POINTS	TOTAL
_____ / _____	_____ / _____	_____ / _____	<input type="checkbox"/> <input type="checkbox"/> <input type="checkbox"/> <input type="checkbox"/>	_____	_____ X _____	_____ = _____	
_____ / _____	_____ / _____	_____ / _____	<input type="checkbox"/> <input type="checkbox"/> <input type="checkbox"/> <input type="checkbox"/>	_____	_____ X _____	_____ = _____	
_____ / _____	_____ / _____	_____ / _____	<input type="checkbox"/> <input type="checkbox"/> <input type="checkbox"/> <input type="checkbox"/>	_____	_____ X _____	_____ = _____	
_____ / _____	_____ / _____	_____ / _____	<input type="checkbox"/> <input type="checkbox"/> <input type="checkbox"/> <input type="checkbox"/>	_____	_____ X _____	_____ = _____	
_____ / _____	_____ / _____	_____ / _____	<input type="checkbox"/> <input type="checkbox"/> <input type="checkbox"/> <input type="checkbox"/>	_____	_____ X _____	_____ = _____	
_____ / _____	_____ / _____	_____ / _____	<input type="checkbox"/> <input type="checkbox"/> <input type="checkbox"/> <input type="checkbox"/>	_____	_____ X _____	_____ = _____	

(Level = Points: M=0.2, 1=0.5, 2=0.8, 3=1.6, 4=2.4, 5=3.6, 6=9, 7=14, 8=19, 9=23, 10=29)

IV. \_\_\_\_\_

### REASONS FOR DEPARTURE - MITIGATING CIRCUMSTANCES (reasons may be checked here or written on the scoresheet)

- Legitimate, uncoerced plea bargain.
- The defendant was an accomplice to the offense and was a relatively minor participant in the criminal conduct.
- The capacity of the defendant to appreciate the criminal nature of the conduct or to conform that conduct to the requirements of law was substantially impaired.
- The defendant requires specialized treatment for a mental disorder that is unrelated to substance abuse or addiction, or for a physical disability, and the defendant is amenable to treatment.
- The need for payment of restitution to the victim outweighs the need for a prison sentence.
- The victim was an initiator, willing participant, aggressor, or provoker of the incident.
- The defendant acted under extreme duress or under the domination of another person.
- Before the identity of the defendant was determined, the victim was substantially compensated.
- The defendant cooperated with the State to resolve the current offense or any other offense.
- The offense was committed in an unsophisticated manner and was an isolated incident for which the defendant has shown remorse.
- At the time of the offense the defendant was too young to appreciate the consequences of the offense.
- The defendant is to be sentenced as a youthful offender.
- The defendant is amenable to the services of a postadjudicatory treatment-based drug court program and is otherwise qualified to participate in the program.

Pursuant to 921.0026(3) the defendant's substance abuse or addiction does not justify a downward departure from the lowest permissible sentence, except for the provisions of s. 921.0026(2)(m).

Effective Date: For offenses committed under the Criminal Punishment Code effective for offenses committed on or after October 1, 1998 and subsequent revisions.