



Edwin G. Buss
Secretary

FLORIDA DEPARTMENT OF CORRECTIONS

INMATE ESCAPES

Fiscal Year 2010-2011



- Fiscal Year 2010-2011
 - Attempts
 - Escapes
 - Recaptures
- Short-term trends in Inmate Escapes
- Long-term trends in Inmate Escapes for Fiscal Years 1989-90 to 2010-11

Prepared by:
Florida Department of Corrections
Bureau of Research and Data Analysis
Inmate Information and Analysis Section
August 2011

Inmate Escape Report

(Fiscal Year 2010-11)

This report provides information for Fiscal Year 2010-11 (July 2010 - June 2011) in reference to attempted escapes, escapes and recaptures from Florida's correctional facilities. This report summarizes the following:

- * Attempted escapes
- * Escapes by level, facility type, and facility type by region
- * Recaptures and recaptures within quarter, by time to recapture, and time to recapture by facility type
- * Escape rates and rates by region, and facility type by region
- * Escapes by facility type, by month
- * Escape rates by region, by quarter

For purposes of this report attempted escape and escape are defined as follows:

Attempted escape: Inmate is apprehended before completion of the escape act.

Escape: Unauthorized absence from the designated facility boundary or absence from any official assignment outside this boundary.

An escape is further defined as one of the following levels:

Level I: Escape from non-secure environment, such as a community correctional center or an outside work squad, in which no Level III behaviors are exhibited.

Level II: Escape from a secure perimeter in which no Level III behaviors are exhibited.

Level III: Escape that involves hostages, weapons/tools, outside assistance, or violence during or after the escape.

An escape rate is defined as the number of escapes/(total population on the last day of the month for each month in the quarter/3)* 1,000.

A perimeter escape is defined as one initiated from inside the perimeter of a correctional facility other than a community release facility.

Summary:

The number of escapes increased from 150 in FY 2009-10 to 167 in FY 2010-11. Of the 167 escapes 2 escapes (1.2%) were from a major C.I. while on work detail outside the perimeter. 4 escapes (2.4%) were from a work camp/road prison while on work detail outside the perimeter. 161 of 167 escapes (96.4%) were from work release/contract centers. 164 (98.2%) escapes were Level I escapes with no Level II escapes. There were 3 (1.8%) Level III escapes and none were undefined. There were no escapes in FY 2010-11 that constituted a breach of a secure perimeter.

Of the 167 completed escapes, 156 (93.4%) were recaptured to date of this report. 149 of the 156 recaptured, (95.5%) were recaptured within the same quarter as the escape. 111 (74.5%) of the 149 were recaptured within 24 hours of the escape.

The overall escape rate increased from 1.51 in FY 2009-10 to 1.67 in FY 2010-11. The escape rate for correctional institutions was 0.02 and the escape rate for work camps/road prison was 0.33. Region I had the lowest overall rate per 1,000 inmates for the fiscal year at 0.41 whereas Region III had the highest at 3.93.

There were 5 attempted and foiled escapes from Florida correctional facilities during Fiscal Year 2010-11.

Escapes (July 2010 - June 2011)

Escapes*	1st Quarter (Jul-Sep 2010)		2nd Quarter (Oct-Dec 2010)		3rd Quarter (Jan-Mar 2011)		4th Quarter (Apr-Jun 2011)		Fiscal Year 2010/2011	
Escapes	52		37		37		41		167	
Perimeter Escapes	0		0		0		0		0	
Level										
Level I	51	98.1%	36	97.3%	36	97.3%	41	100.0%	164	98.2%
Level II	0	0.0%	0	0.0%	0	0.0%	0	0.0%	0	0.0%
Level III	1	1.9%	1	2.7%	1	2.7%	0	0.0%	3	1.8%
Not Rated	0	0.0%	0	0.0%	0	0.0%	0	0.0%	0	0.0%
Facility Type										
Correctional Institutions	0	0.0%	1	2.7%	1	2.7%	0	0.0%	2	1.2%
Work Camps/Road Prisons	2	3.8%	2	5.4%	0	0.0%	0	0.0%	4	2.4%
Work Release/Contract Centers	50	96.2%	34	91.9%	36	97.3%	41	100.0%	161	96.4%
Facility Type by Region										
Correctional Institutions	0	0.0%	1	2.7%	1	2.7%	0	0.0%	2	1.2%
Region I	0	0.0%	0	0.0%	0	0.0%	0	0.0%	0	0.0%
Region II	0	0.0%	0	0.0%	0	0.0%	0	0.0%	0	0.0%
Region III	0	0.0%	1	100.0%	0	0.0%	0	0.0%	1	50.0%
Region IV	0	0.0%	0	0.0%	1	100.0%	0	0.0%	1	50.0%
Work Camps/Road Prisons	2	3.8%	2	5.4%	0	0.0%	0	0.0%	4	2.4%
Region I	1	50.0%	1	50.0%	0	0.0%	0	0.0%	2	50.0%
Region II	0	0.0%	0	0.0%	0	0.0%	0	0.0%	0	0.0%
Region III	0	0.0%	1	50.0%	0	0.0%	0	0.0%	1	25.0%
Region IV	1	50.0%	0	0.0%	0	0.0%	0	0.0%	1	25.0%
Work Release/Contract Centers	50	96.2%	34	91.9%	36	97.3%	41	100.0%	161	96.4%
Region I	4	8.0%	2	5.9%	1	2.8%	4	9.8%	11	6.8%
Region II	15	30.0%	6	17.6%	8	22.2%	6	14.6%	35	21.7%
Region III	19	38.0%	20	58.8%	19	52.8%	13	31.7%	71	44.1%
Region IV	12	24.0%	6	17.6%	8	22.2%	18	43.9%	44	27.3%

*Numbers may differ from previous reports as facilities may change types across time and the number and level of escape may be updated upon receipt of further information.

Recaptures (July 2010- June 2011)

Recaptures**	1st Quarter (Jul-Sep 2010)		2nd Quarter (Oct-Dec 2010)		3rd Quarter (Jan-Mar 2011)		4th Quarter (Apr-Jun 2011)		Fiscal Year 2010/20110	
Escapes	52		37		37		41		167	
Recaptured	52	100.0%	37	100.0%	35	94.6%	34	82.9%	156	93.4%
Not Recaptured	0	0.0%	0	0.0%	2	5.4%	7	17.1%	11	6.6%
Recaptured Within Quarter	50	96.2%	35	94.6%	31	88.6%	33	97.1%	149	95.5%
Time to Recapture Within Quarter										
Less Than or Equal To 24 Hours	35	70.0%	26	74.3%	26	83.9%	24	72.7%	111	74.5%
Greater Than 24 Hours Within Quarter	15	30.0%	9	25.7%	5	16.1%	9	27.3%	38	25.5%
Recaptures by Facility Type Within Quarter										
Correctional Institutions	0	0.0%	1	2.9%	1	3.2%	0	0.0%	2	1.3%
Less Than or Equal To 24 Hours	0	0.0%	0	0.0%	0	0.0%	0	0.0%	0	0.0%
Greater Than 24 Hours	0	0.0%	1	100.0%	1	100.0%	0	0.0%	2	100.0%
Work Camps/Road Prisons	2	4.0%	2	5.7%	0	0.0%	0	0.0%	4	2.7%
Less Than or Equal To 24 Hours	2	100.0%	2	100.0%	0	0.0%	0	0.0%	4	100.0%
Greater Than 24 Hours	0	0.0%	0	0.0%	0	0.0%	0	0.0%	0	0.0%
Work Release/Contract Centers	48	96.0%	32	91.4%	30	96.8%	33	100.0%	143	96.0%
Less Than or Equal To 24 Hours	33	68.8%	24	75.0%	26	86.7%	24	72.7%	107	74.8%
Greater Than 24 Hours	15	31.3%	8	25.0%	4	13.3%	9	27.3%	36	25.2%

**The Recaptured/Not Recaptured categories may change over time as past escapes are recaptured.

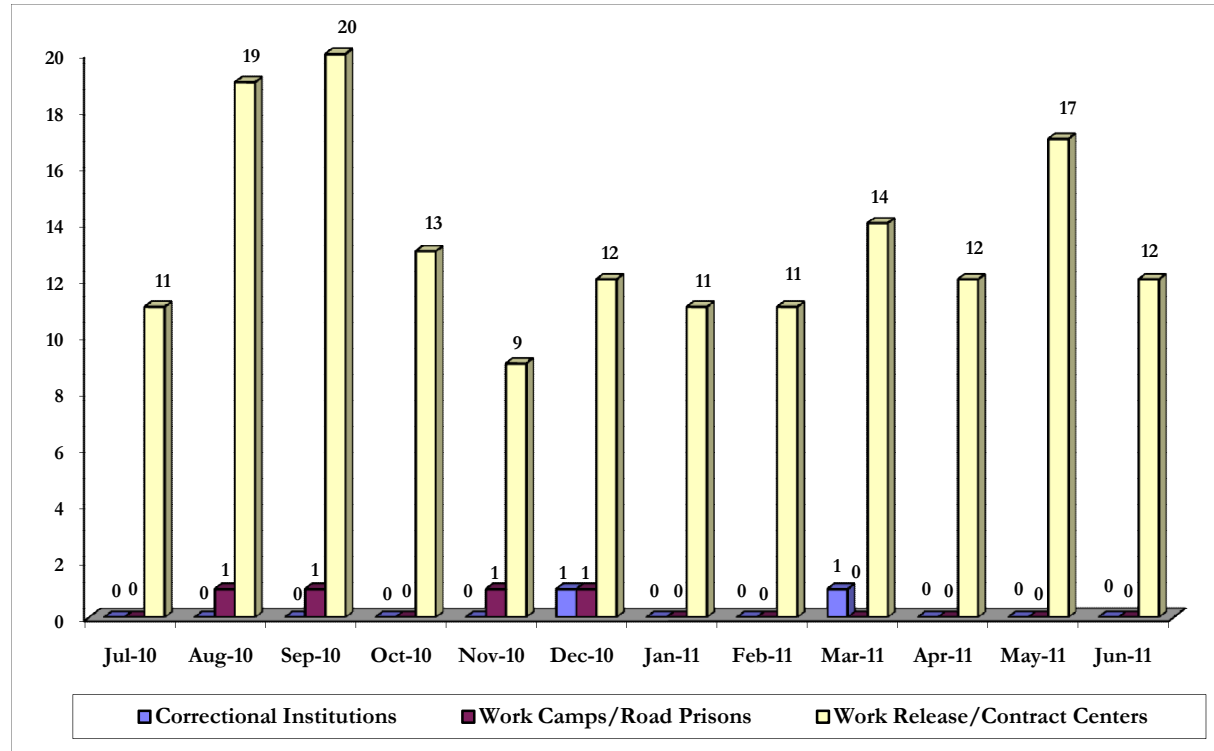
Breakdown of recaptured information is based on those escapes recaptured within the quarter in which the escape occurred.

Escape Rates (July 2010 - June 2011)

Escape Rate* by Region	1st Quarter (Jul-Sep 2010)	2nd Quarter (Oct-Dec 2010)	3rd Quarter (Jan-Mar 2011)	4th Quarter (Apr-Jun 2011)	Fiscal Year 2010/20110
Escapes	52	37	37	41	167
Escape Rate	0.52	0.37	0.37	0.41	1.67
Region					
Region I	0.16	0.09	0.03	0.12	0.41
Region II	0.52	0.21	0.28	0.20	1.20
Region III	0.97	1.17	1.05	0.73	3.93
Region IV	0.62	0.29	0.44	0.91	2.24
Facility Type by Region					
Correctional Institutions	0.00	0.01	0.01	0.00	0.02
Region I	0.00	0.00	0.00	0.00	0.00
Region II	0.00	0.00	0.00	0.00	0.00
Region III	0.00	0.07	0.00	0.00	0.07
Region IV	0.00	0.00	0.06	0.00	0.06
Work Camps/Road Prisons	0.17	0.16	0.00	0.00	0.33
Region I	0.26	0.26	0.00	0.00	0.52
Region II	0.00	0.00	0.00	0.00	0.00
Region III	0.00	0.41	0.00	0.00	0.41
Region IV	0.59	0.00	0.00	0.00	0.52
Work Release/Contract Centers	13.12	8.99	9.36	10.61	42.07
Region I	13.42	6.76	3.36	13.38	36.94
Region II	28.85	11.49	15.33	11.47	67.08
Region III	10.70	11.29	10.50	7.21	39.68
Region IV	9.84	5.03	6.56	14.52	36.12

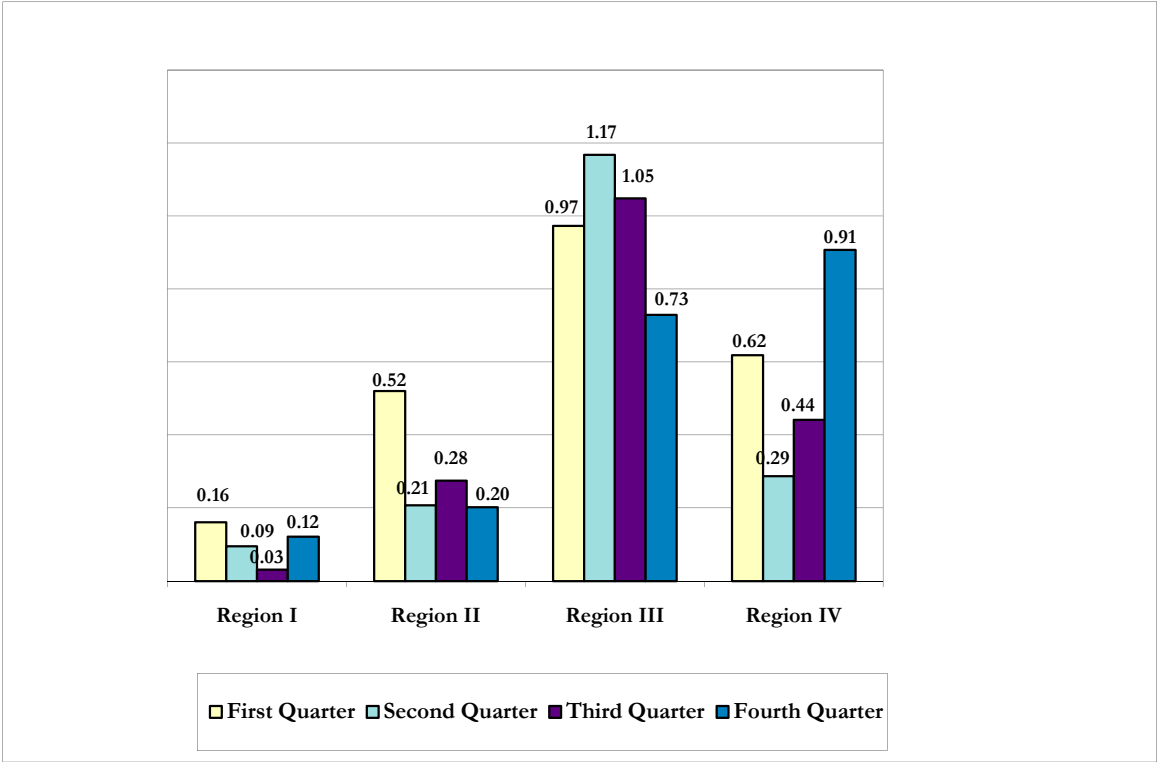
*Escape rate defined as the number of escapes/(total population on the last day of the month for each month in the quarter/3)*1,000. The Fiscal Year rate is sum of the escapes/the average population of the four quarters.

Escapes by Facility Type, by Month (July 2010 - June 2011)



Escape Rate by Region, by Quarter

(July 2010 - June 2011)



Escapes by Region/Facility (July 2010 - June 2011)

Region I

Region/Institution	1st Quarter (Jul-Sep 2010)	2nd Quarter (Oct-Dec 2010)	3rd Quarter (Jan-Mar 2011)	4th Quarter (Apr-Jun 2011)	Fiscal Year 2010/2011
Total Escapes	52	37	37	41	167
Region 1	5	3	1	4	13
Correctional Institutions	0	0	0	0	0
101-Apalachee West CI					
102-Apalachee East CI					
103-Jefferson CI					
104-Jackson CI					
105-Calhon CI					
106-Century CI					
107-Holmes CI					
108-Walton CI					
109-Gulf CI					
110-NWFRC Main Unit					
111-Gadsden CI (Private)					
112-Bay CF (Private)					
113-Franklin CI					
115-Okaloosa CI					
118-Wakulla CI					
119-Santa Rosa CI					
120-Liberty CI					
122-Wakulla Annex					
125-NWFRC Annex					
135-Santa Rosa Annex					
139-Quincy Annex (Liberty CI)					
150-Gulf CI Annex					
159-Graceville CI (Private)					
185-Blackwater River CF (Private)					
Work Camps/Road Prisons	1	1	0	0	2
114-River Junction Work Camp					
121-Liberty Work Camp					
134-Tallahassee Road Prison					
136-Caryville Work Camp					
160-Graceville Work Camp	1				1
161-Okaloosa Work Camp					
162-Holmes Work Camp					
165-Calhoun Work Camp					
166-Jackson Work Camp					
167-Century Work Camp					
170-Gulf Forestry Camp		1			1
171-Bay City Work Camp					
172-Walton Work Camp					
173-Wakulla Work Camp					
177-Berrydale Forestry Camp					
Work Release/Contract Centers	4	2	1	4	11
163-Panama City WRC		1	1	3	5
164-Pensacola WRC					
168-Tallahassee WRC	4	1	0	1	6
187-Shisa House West (Private)					

Escapes by Region/Facility

(July 2010 - June 2011)

Region II

Region/Institution	1st Quarter (Jul-Sep 2010)	2nd Quarter (Oct-Dec 2010)	3rd Quarter (Jan-Mar 2011)	4th Quarter (Apr-Jun 2011)	Fiscal Year 2010/2011
Total Escapes	52	37	37	41	167
Region 2	15	6	8	6	35
Correctional Institutions	0	0	0	0	0
201-Columbia CI					
205-Florida State Prison Main Unit					
206-FSP West Unit					
208-RMC West Unit					
209-RMC Main Unit					
210-New River CI					
211-Cross City CI					
212-Mayo CI					
213-Union CI					
214-Putnam CI					
215-Hamilton CI					
216-Madison CI					
218-Taylor CI					
219-Lake City CF (Private)					
224-Taylor Annex					
230-Suwannee CI					
231-Suwannee Annex					
250-Hamilton CI Annex					
251-Columbia Annex					
255-Lawtey CI					
277-Gainesville CI					
279-Baker CI					
281-Lancaster CI					
Work Camps/Road Prisons	0	0	0	0	0
204-New River "O" Unit					
221-RMC Work Camp					
227-Taylor Work Camp					
232-Suwannee Work Camp					
240-Gainesville Work Camp					
261-Baker Work Camp					
262-Cross City Work Camp					
263-Hamilton Work Camp					
264-Columbia Work Camp					
265-Mayo Work Camp					
280-Lancaster Work Camp					
289-Madison Work Camp					
Work Release/Contract Centers	15	6	8	6	35
243-Dinsmore WRC	6	1	3	2	12
249-Lake City WRC	1				1
266-Santa Fe WRC	4		1	2	7
267-Bridges of Jacksonville (Private)	4	5	4	2	15
278-Shisa House East (Private)					

Escapes by Region/Facility (July 2010 - June 2011)

Region III

Region/Institution	1st Quarter (Jul-Sep 2010)	2nd Quarter (Oct-Dec 2010)	3rd Quarter (Jan-Mar 2011)	4th Quarter (Apr-Jun 2011)	Fiscal Year 2010/2011
Total Escapes	52	37	37	41	167
Region 3	19	22	19	13	73
Correctional Institutions	0	1	0	0	1
282-Tomoka CI					
304-Marion CI					
307-Sumter CI					
308-Sumter BTU Boot Camp					
310-Brevard CI					
312-Lake CI					
314-Lowell CI Women's Unit					
320-Central Florida Reception Center Main					
321-Central Florida Reception Center East		1			1
323-Central Florida Reception Center South					
336-Hernando CI					
366-Lowell CI Boot Camp					
367- Lowell Annex					
503-Avon Park CI					
529-Hillsborough CI					
573-Zephyrhills CI					
575-Demilly CI					
580-Polk CI					
Work Camps/Road Prisons	0	1	0	0	1
284-Tomoka Work Camp		1			1
287-Levy Forestry Camp					
316-Lowell Work Camp					
363-Brevard Work Camp					
364-Marion Work Camp					
365-Sumter Work Camp					
504-Avon Park Work Camp					
552-Largo Road Prison					
562-Polk Work Camp					
Work Release/Contract Centers	19	20	19	13	71
242-Daytona WRC	2	1			3
285-Reality House (Private)					
341-Cocoa WRC					
345-Suncoast WRC Female (Private)		2		1	3
346-Suncoast WRC Male (Private)	2				2
351-Bridges of Orlando (Private)	2	6	2	3	13
352-Orlando Transition Center (Private)		2			2
353-Transition House Inc. Kissimmee (Private)					
354-Largo Residential Re-Entry Center (Private)	10	5	8	3	26
355-Re-Entry Center of Ocala (Private)	1		1	1	3
361-Orlando WRC					
374-Kissimmee WRC		1	2	1	4
540-Bartow WRC			1		1
554-Pinellas WRC				2	2
572-Tarpon Springs WRC					
583-St. Petersburg WRC	2	3	5	2	12

Escapes by Region/Facility

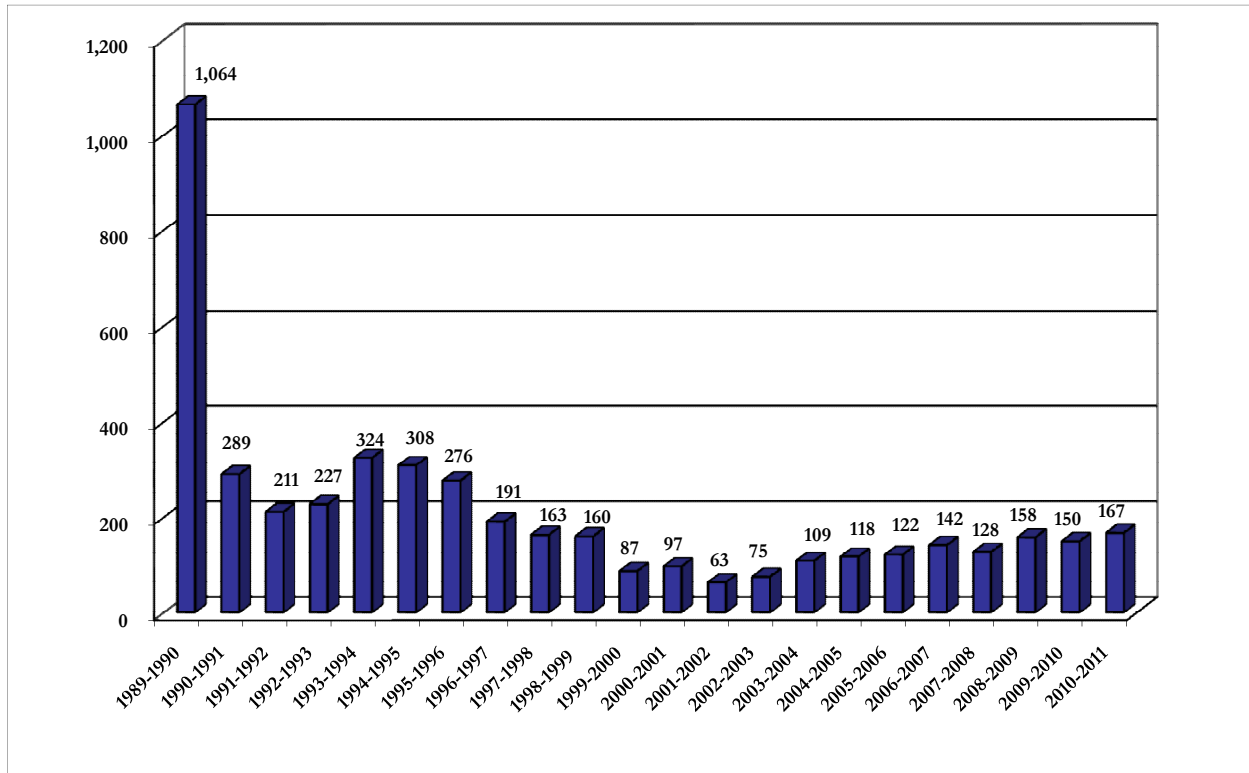
(July 2010 - June 2011)

Region IV

Region/Institution	1st Quarter (Jul-Sep 2010)	2nd Quarter (Oct-Dec 2010)	3rd Quarter (Jan-Mar 2011)	4th Quarter (Apr-Jun 2011)	Fiscal Year 2010/2011
Total Escapes	52	37	37	41	167
Region 4	13	6	9	16	46
Correctional Institutions	0	0	1	0	1
401-Everglades CI					
402-South Florida Reception Center Main					
403- SFRC South Unit					
404-Okceehobee CI					
405-South Bay CF (Private)					
406-Glades CI					
418-Indian River CI					
419-Homestead CI					
430-Martin CI					
463-Dade CI			1		1
475-Broward CI					
501-Hardee CI					
510-Charlotte CI					
511-Moore Haven CF (Private)					
564-DeSoto CI Annex					
576-Hendry CI					
Work Camps/Road Prisons	1	0	0	0	1
420-Martin Work Camp					
426-Big Pine Key Road Prison					
431-Loxahatchee Road Prison					
462-Glades Work Camp					
464-Sago Palm Work Camp					
525-Arcadia Road Prison					
544-Ft. Myers Work Camp					
560-DeSoto Work Camp					
561-Hendry Work Camp					
563-Hardee Work Camp	1				1
Work Release/Contract Centers	12	6	8	18	44
411-Pompano Transition Center (Private)			2		2
412-Bradenton Transition Center (Private)					
444-Ft. Pierce WRC			1		1
446-Hollywood WRC					
452-Atlantic WRC					
457-Miami North WRC	2		3	4	9
467-Bridges of Pompano WRC (Private)	8	2		11	21
469-West Palm WRC		1	1		2
473-Opa Locka WRC	2	3	1	3	9

Total Escapes

(FY 1989-1990 to FY 2010-2011)



Historical Escape Rates (All Facilities)
(FY 1989-1990 to FY 2010-2011)

Fiscal Year	Number of Escapes	Average Inmate Population*	Escapes Per 1,000 Inmates
1989-1990	1,064	40,396	26.34
1990-1991	289	44,483	6.50
1991-1992	211	46,622	4.53
1992-1993	227	48,808	4.65
1993-1994	324	53,594	6.05
1994-1995	308	59,022	5.22
1995-1996	276	63,163	4.37
1996-1997	191	64,242	2.97
1997-1998	163	65,234	2.50
1998-1999	160	67,227	2.38
1999-2000	87	69,782	1.25
2000-2001	97	71,476	1.36
2001-2002	63	72,485	0.87
2002-2003	75	75,162	1.00
2003-2004	109	79,616	1.37
2004-2005	118	83,140	1.42
2005-2006	122	86,570	1.41
2006-2007	142	90,554	1.57
2007-2008	128	94,528	1.35
2008-2009	158	98,306	1.61
2009-2010	150	99,594	1.51
2010-2011	167	100,225	1.67

*Inmate populaton average based on four quarters population on last day of each month/4.

Escape Rates for Correctional Institutions
(FY 1993-1994 to FY 2010-2011)

Fiscal Year	Number of Escapes	Average Inmate Population*	Escapes Per 1,000 Inmates
1993-1994	56	42,355	1.30
1994-1995	37	47,266	0.78
1995-1996	13	50,006	0.26
1996-1997	9	53,670	0.19
1997-1998	8	54,573	0.15
1998-1999	4	56,135	0.07
1999-2000	9	58,607	0.15
2000-2001	4	60,268	0.07
2001-2002	2	60,813	0.03
2002-2003	1	62,957	0.02
2003-2004	3	67,018	0.04
2004-2005	8	70,546	0.11
2005-2006	1	73,240	0.01
2006-2007	1	76,600	0.01
2007-2008	0	80,477	0.00
2008-2009	1	83,483	0.01
2009-2010	1	83,922	0.01
2010-2011	2	84,127	0.02

*Inmate populaton average based on four quarters population on last day of each month/4.

The Florida Department of Corrections
Bureau of Research and Data Analysis
Direct questions to David Ensley or Todd Gregory
or email us at: dcresearch@mail.dc.state.fl.us
(850) 717-3647
501 South Calhoun Street
Tallahassee, Florida 32399-2500