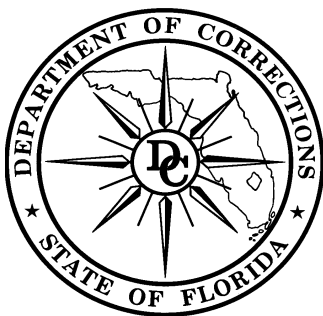


Sentencing Scoresheet Compliance Report

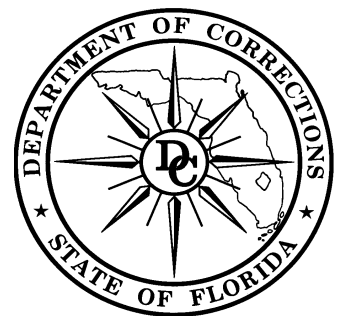
September 2010

*A Report to the Florida Legislature Detailing the Rate of Compliance of
Each Judicial Circuit in Providing Sentencing Guidelines Scoresheets to
the Department of Corrections*



Walter A. McNeil
Secretary

Prepared by:
Florida Department of Corrections
Bureau of Research and Data Analysis
2601 Blair Stone Road
Tallahassee, FL 32399-2500



Sentencing Scoresheet Compliance Report

Executive Summary

This report is in fulfillment of 921.002(4)(c) Florida Statutes, which mandates that the Florida Department of Corrections shall, no later than October 1 of each year, provide the Legislature with a sentencing scoresheet compliance report. This report details the compliance of each judicial circuit in submitting to the Department sentencing scoresheets for offenders convicted of felonies between July 1, 2009 and June 30, 2010.

Included in this report is the following information:

1. Using FY 2009-10 commitments to the Department of Corrections as a baseline for comparing scoresheet submissions, a compliance rate is provided for each judicial circuit and county. Commitments include all felons convicted and sentenced to state prison, probation or community control as well as modifications to and revocations of supervision. Scoresheets reported are those received through September 1, 2010. The statewide rate of compliance for this time period is 71.0%, the same as last fiscal year.
2. For scoresheets received with sentence dates during FY 2009-10 (including those with non-department sanctions), county, circuit and region totals are provided.
3. Circuit and county totals for scoresheets with FY 2009-10 sentence dates are listed according to most severe type of sanction. Of the 113,895 scoresheets received, 31,178 (27.4%) had a state prison sanction, 47,012 (41.3%) received a probation sanction, 6,957 (6.1%) received a community control sanction, and 26,868 (23.6%) received a county jail sanction.

The methodology for identifying missing scoresheets and calculating the compliance rate is described below:

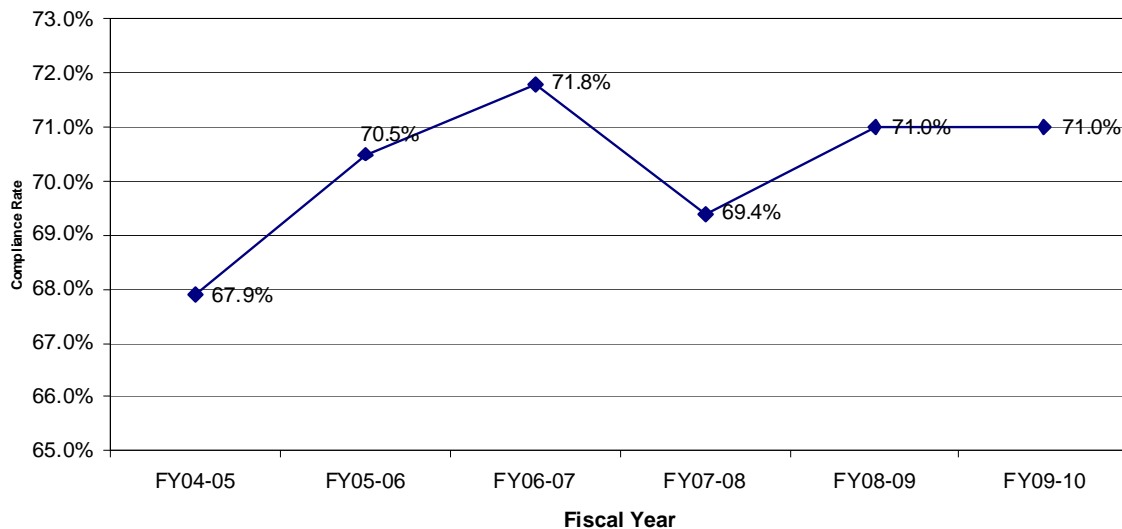
- Consider all sentencing events (including new admissions, revocations and modifications) and compare them to the sentencing scoresheets received for each offender. There are three possible outcomes: the sentencing event matches the scoresheet, there is no scoresheet to match the sentencing event or there is a scoresheet but no record of a sentencing event. The compliance rate is then calculated by adding together the first two options (resulting in the total number of sentencing events) and comparing it to the number of scoresheets that match.

Note: The sentencing scoresheet database is dynamic in that it is constantly being updated. Every effort is made to include scoresheets that are received; however, there is a lag in data entry. While this lag time is generally less than 45 days it may exceed this in some of the larger circuits. As such, as more time is allowed for the data to mature, a more accurate and complete picture of the data may be presented.

Scoresheet Preparation

Beginning on July 1, 2001 Florida Statute 921.0024(3) gave sole responsibility for the preparation of scoresheets to the State Attorney. Previously this responsibility had been shared between the Department of Corrections and the State Attorney.

Sentencing Scoresheet Compliance Over 5 Years



Heggs V. State

In February 2000, the Florida Supreme Court, in its review of Curtis Leon Heggs, determined Chapter Law 95-184 to be unconstitutional due to a violation of the single subject rule of the Florida Constitution. This Chapter Law contained substantial changes in sentencing law referred commonly to as the "1995 Sentencing Guidelines."

In some cases, the 1995 Sentencing Guidelines provided for greater punishment than the 1994 Sentencing Guidelines. Some enhancements were made to the Guidelines, designed primarily to target offenders with more serious current or prior criminal records. There were a significant number of changes and the nature of the changes provided for significant effects for some offenders. However, many offenders sentenced under the 1995 Guidelines would have scored identically under the 1994 version of the law.

In May 2000, the Supreme Court revised and finalized their opinion in this case and further clarified who is eligible for re-sentencing. This decision stated that "only those persons adversely affected by the amendments made by Chapter Law 95-184 may rely on our decision here to obtain relief. Stated another way, in the guidelines context, we determine that if a person's sentence imposed under the 1995 Guidelines could have been imposed under the 1994 Guidelines (without a departure), then that person shall not be entitled to relief. "

The Supreme Court declined to rule in Heggs as to when the window period closed for offenders claiming their guidelines sentences are invalid due to the amendments contained in Chapter Law 95-184. However, in its review of Xzavier Trapp, the Supreme Court determined that the window period for challenging the Sentencing Guidelines provisions amended in Chapter Law 95-184 opened in October 1, 1995 and closed on May 24, 1997.

Approximately 192,267 sentencing events occurred under the 1995 sentencing structure for offenses committed between October 1, 1995 and May 24, 1997, based on the Guidelines scoresheets received by the Department of Corrections through February 29, 2000. Original analysis indicated that 73,467 of these sentencing events evidenced scores adversely affected by the changes brought about in the 1995 guidelines. This analysis did not determine that the 1995 sentence was outside the range of the 1994 sentence, only that the scoresheet calculation reflected a difference in points.

Due to the potential number of re-sentencing events, it would be inaccurate to attempt to analyze and compare the 1995 sentencing guidelines to other versions of the sentencing scoresheet. As re-sentencing events occur, the original 1995 scoresheet will be replaced in the database with a 1994 scoresheet. This is necessary because the re-sentencing invalidates the original sentencing event. Likewise, the new sentence will overwrite the original sentence in DOC sentence structure and databases. A computerized record of the original sentence is not kept in the database that is used for data analysis.

As such, it is not possible to determine which scoresheets are the result of a re-sentencing or to verify that a re-sentencing event was a result of the Heggs ruling. Therefore, any analysis of this time period would yield a mixture of offenders sentenced under both the 1994 and 1995 guidelines.

For the analysis of the compliance rates, we are excluding all scoresheets with offense dates that occur from October 1, 1995 through May 24, 1997 (less than 2% of all scoresheets received).

Table of Contents

Executive Summary.....i-iii

Tables

Scoresheets Received Compared with Admissions to the Department of
Corrections (by Judicial Circuit).....1

Scoresheets Received Compared with Admissions to the Department of
Corrections (by Judicial Circuit/County).....2-4

Scoresheets Received by Judicial Circuit.....5

Scoresheets Received by Judicial Circuit/County.....6-7

Sanctions Imposed by Judicial Circuit.....8

Sanctions Imposed by Judicial Circuit/County.....9-11

Appendix

Total Admissions to Prison by County of Commitment

Scoresheets Received Compared with Admissions* to the Department of Corrections by Judicial Circuit

(Scoresheets Received through September 1, 2010 for Offenders
Sentenced between July 1, 2009 and June 30, 2010)**

Judicial Circuit	Supervision Admissions			Prison Admissions			All Admissions		
	Total	With Scoresheets		Total	With Scoresheets		Total	With Scoresheets	
1 (Pensacola)	4,597	3,575	77.8%	1,717	1,094	63.7%	6,314	4,669	73.9%
2 (Tallahassee)	2,983	1,412	47.3%	1,126	549	48.8%	4,109	1,961	47.7%
3 (Lake City)	1,659	721	43.5%	718	442	61.6%	2,377	1,163	48.9%
4 (Jacksonville)	2,171	747	34.4%	3,112	2,055	66.0%	5,283	2,802	53.0%
5 (Tavares)	5,071	3,959	78.1%	2,246	1,571	69.9%	7,317	5,530	75.6%
6 (Clearwater)	7,323	6,948	94.9%	3,229	3,037	94.1%	10,552	9,985	94.6%
7 (Daytona)	3,936	2,563	65.1%	1,556	989	63.6%	5,492	3,552	64.7%
8 (Gainesville)	2,053	1,110	54.1%	1,039	553	53.2%	3,092	1,663	53.8%
9 (Orlando)	7,126	5,725	80.3%	2,421	1,997	82.5%	9,547	7,722	80.9%
10 (Bartow)	3,547	2,889	81.4%	1,904	1,610	84.6%	5,451	4,499	82.5%
11 (Miami)	8,728	4,542	52.0%	2,089	1,098	52.6%	10,817	5,640	52.1%
12 (Sarasota)	3,249	2,151	66.2%	1,219	774	63.5%	4,468	2,925	65.5%
13 (Tampa)	5,853	4,169	71.2%	2,514	1,745	69.4%	8,367	5,914	70.7%
14 (Panama City)	2,581	1,427	55.3%	1,175	806	68.6%	3,756	2,233	59.5%
15 (West Palm Beach)	2,309	1,591	68.9%	1,459	1,171	80.3%	3,768	2,762	73.3%
16 (Key West)	502	371	73.9%	182	88	48.4%	684	459	67.1%
17 (Ft. Lauderdale)	8,360	5,825	69.7%	2,436	1,772	72.7%	10,796	7,597	70.4%
18 (Sanford)	4,796	3,135	65.4%	1,634	1,153	70.6%	6,430	4,288	66.7%
19 (Ft. Pierce)	2,398	2,106	87.8%	1,646	1,492	90.6%	4,044	3,598	89.0%
20 (Ft. Myers)	4,506	3,982	88.4%	1,960	1,640	83.7%	6,466	5,622	86.9%
Statewide	83,748	58,948	70.4%	35,382	25,636	72.5%	119,130	84,584	71.0%

*Admissions include original sentencing events that result in the offender being remanded to the department as well as modification of sentences and revocations of supervision.

** Excludes offense dates between October 1, 1995 and May 24, 1997.

Note: Scoresheets prepared on an incorrect version of the guidelines due to offense date, or 1995 or subsequent scoresheets lacking judge's signature are not included in total.

Also, totals do not include county jail or other sanctions.

Scoresheets Received Compared with Admissions* to the Department of Corrections by County

(Scoresheets Received through September 1, 2010 for Offenders
Sentenced between July 1, 2009 and June 30, 2010)**

Judicial Circuit Number / County	Supervision Admissions			Prison Admissions			All Admissions			
	Total	With Scoresheets		Total	With Scoresheets		Total	With Scoresheets		
1 Escambia	2,030	1,746	86.0%	1,000	827	82.7%	3,030	2,573	84.9%	
	Okaloosa	1,331	973	73.1%	292	179	61.3%	1,623	1,152	71.0%
	Santa Rosa	753	601	79.8%	332	85	25.6%	1,085	686	63.2%
	Walton	483	255	52.8%	93	3	3.2%	576	258	44.8%
2 Franklin	115	56	48.7%	45	28	62.2%	160	84	52.5%	
	Gadsden	418	153	36.6%	163	66	40.5%	581	219	37.7%
	Jefferson	133	70	52.6%	68	41	60.3%	201	111	55.2%
	Leon	1,994	1,078	54.1%	747	387	51.8%	2,741	1,465	53.4%
	Liberty	91	42	46.2%	29	14	48.3%	120	56	46.7%
	Wakulla	232	13	5.6%	74	13	17.6%	306	26	8.5%
3 Columbia	606	389	64.2%	290	276	95.2%	896	665	74.2%	
	Dixie	106	59	55.7%	67	26	38.8%	173	85	49.1%
	Hamilton	142	13	9.2%	32	13	40.6%	174	26	14.9%
	Lafayette	53	32	60.4%	28	16	57.1%	81	48	59.3%
	Madison	134	7	5.2%	41	1	2.4%	175	8	4.6%
	Suwannee	343	61	17.8%	181	69	38.1%	524	130	24.8%
	Taylor	275	160	58.2%	79	41	51.9%	354	201	56.8%
4 Clay	432	392	90.7%	432	315	72.9%	864	707	81.8%	
	Duval	1,439	346	24.0%	2,531	1,629	64.4%	3,970	1,975	49.7%
	Nassau	300	9	3.0%	149	111	74.5%	449	120	26.7%
5 Citrus	527	472	89.6%	278	138	49.6%	805	610	75.8%	
	Hernando	1,017	615	60.5%	339	239	70.5%	1,356	854	63.0%
	Lake	1,518	1,112	73.3%	616	260	42.2%	2,134	1,372	64.3%

Scoresheets Received Compared with Admissions* to the Department of Corrections by County

(Scoresheets Received through September 1, 2010 for Offenders
Sentenced between July 1, 2009 and June 30, 2010)**

Judicial Circuit Number / County	Supervision Admissions			Prison Admissions			All Admissions		
	Total	With Scoresheets		Total	With Scoresheets		Total	With Scoresheets	
Marion	1,735	1,520	87.6%	883	816	92.4%	2,618	2,336	89.2%
Sumter	274	240	87.6%	130	118	90.8%	404	358	88.6%

Scoresheets Received Compared with Admissions* to the Department of Corrections by County

(Scoresheets Received through September 1, 2010 for Offenders
Sentenced between July 1, 2009 and June 30, 2010)**

Judicial Circuit Number / County	Supervision Admissions			Prison Admissions			All Admissions		
	Total	With Scoresheets		Total	With Scoresheets		Total	With Scoresheets	
6 Pasco	2,236	2,067	92.4%	966	891	92.2%	3,202	2,958	92.4%
Pinellas	5,087	4,881	96.0%	2,263	2,146	94.8%	7,350	7,027	95.6%
7 Flagler	251	95	37.8%	80	38	47.5%	331	133	40.2%
Putnam	438	347	79.2%	231	149	64.5%	669	496	74.1%
St. Johns	594	163	27.4%	310	37	11.9%	904	200	22.1%
Volusia	2,653	1,958	73.8%	935	765	81.8%	3,588	2,723	75.9%
8 Alachua	1,343	769	57.3%	675	456	67.6%	2,018	1,225	60.7%
Baker	154	85	55.2%	73	28	38.4%	227	113	49.8%
Bradford	187	138	73.8%	66	24	36.4%	253	162	64.0%
Gilchrist	55	43	78.2%	33	20	60.6%	88	63	71.6%
Levy	224	0	0.0%	162	0	0.0%	386	0	0.0%
Union	90	75	83.3%	30	25	83.3%	120	100	83.3%
9 Orange	5,439	4,323	79.5%	1,884	1,537	81.6%	7,323	5,860	80.0%
Osceola	1,687	1,402	83.1%	537	460	85.7%	2,224	1,862	83.7%
10 Hardee	127	78	61.4%	58	27	46.6%	185	105	56.8%
Highlands	491	455	92.7%	220	188	85.5%	711	643	90.4%
Polk	2,929	2,356	80.4%	1,626	1,395	85.8%	4,555	3,751	82.3%
11 Miami-Dade	8,728	4,542	52.0%	2,089	1,098	52.6%	10,817	5,640	52.1%
12 Desoto	266	203	76.3%	134	110	82.1%	400	313	78.3%
Manatee	1,245	713	57.3%	572	302	52.8%	1,817	1,015	55.9%
Sarasota	1,738	1,235	71.1%	513	362	70.6%	2,251	1,597	70.9%
13 Hillsborough	5,853	4,169	71.2%	2,514	1,745	69.4%	8,367	5,914	70.7%
14 Bay	1,684	1,150	68.3%	813	685	84.3%	2,497	1,835	73.5%

Scoresheets Received Compared with Admissions* to the Department of Corrections by County

(Scoresheets Received through September 1, 2010 for Offenders
Sentenced between July 1, 2009 and June 30, 2010)**

Judicial Circuit Number / County	Supervision Admissions			Prison Admissions			All Admissions		
	Total	With Scoresheets		Total	With Scoresheets		Total	With Scoresheets	
Calhoun	123	94	76.4%	42	35	83.3%	165	129	78.2%
Gulf	94	2	2.1%	41	23	56.1%	135	25	18.5%

Scoresheets Received Compared with Admissions* to the Department of Corrections by County

(Scoresheets Received through September 1, 2010 for Offenders
Sentenced between July 1, 2009 and June 30, 2010)**

Judicial Circuit Number / County	Supervision Admissions			Prison Admissions			All Admissions		
	Total	With Scoresheets		Total	With Scoresheets		Total	With Scoresheets	
Holmes	181	40	22.1%	62	3	4.8%	243	43	17.7%
Jackson	301	128	42.5%	130	60	46.2%	431	188	43.6%
Washington	198	13	6.6%	87	0	0.0%	285	13	4.6%
15 Palm Beach	2,309	1,591	68.9%	1,459	1,171	80.3%	3,768	2,762	73.3%
16 Monroe	502	371	73.9%	182	88	48.4%	684	459	67.1%
17 Broward	8,360	5,825	69.7%	2,436	1,772	72.7%	10,796	7,597	70.4%
18 Brevard	3,024	1,918	63.4%	1,184	835	70.5%	4,208	2,753	65.4%
Seminole	1,772	1,217	68.7%	450	318	70.7%	2,222	1,535	69.1%
19 Indian River	580	522	90.0%	226	206	91.2%	806	728	90.3%
Martin	527	440	83.5%	430	398	92.6%	957	838	87.6%
Okeechobee	232	149	64.2%	186	126	67.7%	418	275	65.8%
St. Lucie	1,059	995	94.0%	804	762	94.8%	1,863	1,757	94.3%
20 Charlotte	742	657	88.5%	399	370	92.7%	1,141	1,027	90.0%
Collier	787	736	93.5%	387	306	79.1%	1,174	1,042	88.8%
Glades	71	34	47.9%	28	3	10.7%	99	37	37.4%
Hendry	245	196	80.0%	121	86	71.1%	366	282	77.0%
Lee	2,661	2,359	88.7%	1,025	875	85.4%	3,686	3,234	87.7%
Statewide	83,748	58,948	70.4%	35,382	25,636	72.5%	119,130	84,584	71.0%

*Admissions include original sentencing events that result in the offender being remanded to the department as well as modification of sentences and revocations of supervision.

** Excludes offense dates between October 1, 1995 and May 24, 1997.

Note: Scoresheets prepared on an incorrect version of the guidelines due to offense date, or 1995 or subsequent scoresheets lacking judge's signature are not included in total.

Also, totals do not include county jail or other sanctions.

Scoresheets Received Compared with Admissions* to the Department of Corrections by County

(Scoresheets Received through September 1, 2010 for Offenders
Sentenced between July 1, 2009 and June 30, 2010)**

Judicial Circuit Number / County	Supervision Admissions		Prison Admissions		All Admissions	
	Total	With Scoresheets	Total	With Scoresheets	Total	With Scoresheets

Scoresheets Received by Judicial Circuit

(Scoresheets Received through September 1, 2010 for Offenders
Sentenced between July 1, 2009 and June 30, 2010)*

Judicial Circuit	Scoresheets Received	
	Number	Percent
1 (Pensacola)	6,228	5.5%
2 (Tallahassee)	2,313	2.0%
3 (Lake City)	1,295	1.1%
4 (Jacksonville)	5,251	4.6%
5 (Tavares)	6,829	6.0%
6 (Clearwater)	14,737	12.9%
7 (Daytona)	4,731	4.2%
8 (Gainesville)	2,098	1.8%
9 (Orlando)	10,661	9.4%
10 (Bartow)	5,253	4.6%
11 (Miami)	8,387	7.4%
12 (Sarasota)	4,333	3.8%
13 (Tampa)	7,575	6.7%
14 (Panama City)	2,611	2.3%
15 (West Palm Beach)	4,826	4.2%
16 (Key West)	646	0.6%
17 (Ft. Lauderdale)	9,234	8.1%
18 (Sanford)	4,783	4.2%
19 (Ft. Pierce)	4,725	4.1%
20 (Ft. Myers)	7,379	6.5%
GRAND TOTAL	113,895	100.0%

* Total number of scoresheets received by the Department, including those with offense dates between October 1, 1995 and May 24, 1997.

Scoresheets Received by County

(Scoresheets Received through September 1, 2010 for Sentenced between July 1, 2009 and June 30, 2010)*

Judicial Circuit Number / County	Scoresheets Received	
	Number	Percent
1 Escambia	3,582	3.1%
Okaloosa	1,585	1.4%
Santa Rosa	784	0.7%
Walton	277	0.2%
2 Franklin	90	0.1%
Gadsden	240	0.2%
Jefferson	120	0.1%
Leon	1,778	1.6%
Liberty	61	0.1%
Wakulla	24	0.0%
3 Columbia	753	0.7%
Dixie	102	0.1%
Hamilton	28	0.0%
Lafayette	55	0.0%
Madison	9	0.0%
Suwannee	136	0.1%
Taylor	212	0.2%
4 Clay	1,261	1.1%
Duval	3,820	3.4%
Nassau	170	0.1%
5 Citrus	706	0.6%
Hernando	1,041	0.9%
Lake	1,663	1.5%
Marion	2,989	2.6%
Sumter	430	0.4%
6 Pasco	3,691	3.2%
Pinellas	11,046	9.7%
7 Flagler	132	0.1%
Putnam	659	0.6%
St. Johns	213	0.2%
Volusia	3,727	3.3%
8 Alachua	1,570	1.4%
Baker	145	0.1%
Bradford	189	0.2%

Scoresheets Received by County

(Scoresheets Received through September 1, 2010 for Sentenced between July 1, 2009 and June 30, 2010)*

Judicial Circuit Number / County	Scoresheets Received	
	Number	Percent
Gilchrist	75	0.1%
Levy	0	0.0%
Union	119	0.1%

Scoresheets Received by County

(Scoresheets Received through September 1, 2010 for Sentenced between July 1, 2009 and June 30, 2010)*

Judicial Circuit Number / County	Scoresheets Received	
	Number	Percent
9 Orange	8,192	7.2%
Osceola	2,469	2.2%
10 Hardee	119	0.1%
Highlands	765	0.7%
Polk	4,369	3.8%
11 Miami-Dade	8,387	7.4%
12 Desoto	373	0.3%
Manatee	1,469	1.3%
Sarasota	2,491	2.2%
13 Hillsborough	7,575	6.7%
14 Bay	2,031	1.8%
Calhoun	150	0.1%
Gulf	26	0.0%
Holmes	48	0.0%
Jackson	342	0.3%
Washington	14	0.0%
15 Palm Beach	4,826	4.2%
16 Monroe	646	0.6%
17 Broward	9,234	8.1%
18 Brevard	2,899	2.5%
Seminole	1,884	1.7%
19 Indian River	990	0.9%
Martin	1,049	0.9%
Okeechobee	346	0.3%
St. Lucie	2,340	2.1%
20 Charlotte	1,184	1.0%
Collier	1,481	1.3%
Glades	56	0.0%
Hendry	369	0.3%
Lee	4,289	3.8%
Statewide	113,895	100.0%

* Total number of scoresheets received by the Department, including those with offense dates between October 1, 1995 and May 24, 1997. 8

Scoresheets Received by County

(Scoresheets Received through September 1, 2010 for
Sentenced between July 1, 2009 and June 30, 2010)*

Judicial Circuit Number / County	Scoresheets Received	
	Number	Percent

Sanctions by Judicial Circuit

(Scoresheets Received through September 1, 2010 for Offenders
Sentenced between July 1, 2009 and June 30, 2010)**

Judicial Circuit	Sanction on Scoresheet										Total	
	County Jail		Probation		Community Control		State Prison		Other Disposition**			
1 (Pensacola)	1,408	22.6%	2,545	40.9%	693	11.1%	1,357	21.8%	225	3.6%	6,228	5.5%
2 (Tallahassee)	386	16.7%	1,071	46.3%	126	5.4%	670	29.0%	60	2.6%	2,313	2.0%
3 (Lake City)	61	4.7%	484	37.4%	201	15.5%	549	42.4%	0	0.0%	1,295	1.1%
4 (Jacksonville)	1,438	27.4%	609	11.6%	77	1.5%	3,124	59.5%	3	0.1%	5,251	4.6%
5 (Tavares)	1,430	20.9%	2,961	43.4%	434	6.4%	1,803	26.4%	201	2.9%	6,829	6.0%
6 (Clearwater)	3,964	26.9%	5,844	39.7%	867	5.9%	3,439	23.3%	623	4.2%	14,737	12.9%
7 (Daytona)	1,139	24.1%	2,011	42.5%	278	5.9%	1,208	25.5%	95	2.0%	4,731	4.2%
8 (Gainesville)	415	19.8%	835	39.8%	109	5.2%	656	31.3%	83	4.0%	2,098	1.8%
9 (Orlando)	3,327	31.2%	4,320	40.5%	541	5.1%	2,387	22.4%	86	0.8%	10,661	9.4%
10 (Bartow)	660	12.6%	1,981	37.7%	575	10.9%	2,000	38.1%	37	0.7%	5,253	4.6%
11 (Miami)	2,700	32.2%	4,132	49.3%	295	3.5%	1,260	15.0%	0	0.0%	8,387	7.4%
12 (Sarasota)	1,397	32.2%	1,608	37.1%	319	7.4%	942	21.7%	67	1.5%	4,333	3.8%
13 (Tampa)	1,468	19.4%	3,315	43.8%	463	6.1%	2,258	29.8%	71	0.9%	7,575	6.7%
14 (Panama City)	78	3.0%	1,149	44.0%	304	11.6%	1,049	40.2%	31	1.2%	2,611	2.3%
15 (West Palm Beach)	2,022	41.9%	1,378	28.6%	107	2.2%	1,303	27.0%	16	0.3%	4,826	4.2%
16 (Key West)	82	12.7%	392	60.7%	40	6.2%	96	14.9%	36	5.6%	646	0.6%
17 (Ft. Lauderdale)	1,384	15.0%	5,206	56.4%	422	4.6%	2,098	22.7%	124	1.3%	9,234	8.1%
18 (Sanford)	573	12.0%	2,445	51.1%	495	10.3%	1,269	26.5%	1	0.0%	4,783	4.2%
19 (Ft. Pierce)	1,116	23.6%	1,608	34.0%	229	4.8%	1,666	35.3%	106	2.2%	4,725	4.1%
20 (Ft. Myers)	1,820	24.7%	3,118	42.3%	382	5.2%	2,044	27.7%	15	0.2%	7,379	6.5%
Statewide	26,868	23.6%	47,012	41.3%	6,957	6.1%	31,178	27.4%	1,880	1.7%	113,895	100.0%

Note: County jail includes time served and state prison includes life sentences.

* Total number of scoresheets received by the Department, including those with offense dates between October 1, 1995 and May 24, 1997.

** "Other Disposition" includes fines, county and non-reporting probation, termination of probation and re-instatement to probation.

Sanctions by County

(Scoresheets Received through September 1, 2010 for Offenders

Sentenced between July 1, 2009 and June 30, 2010)**

Judicial Circuit Number / County	Sanction on Scoresheet										Total	
	County Jail		Probation		Community Control		State Prison		Other Disposition**			
1 Escambia	1,021	28.5%	1,153	32.2%	312	8.7%	1,000	27.9%	96	2.7%	3,582	3.1%
Okaloosa	299	18.9%	775	48.9%	195	12.3%	254	16.0%	62	3.9%	1,585	1.4%
Santa Rosa	83	10.6%	409	52.2%	132	16.8%	99	12.6%	61	7.8%	784	0.7%
Walton	5	1.8%	208	75.1%	54	19.5%	4	1.4%	6	2.2%	277	0.2%
2 Franklin	8	8.9%	33	36.7%	7	7.8%	42	46.7%	0	0.0%	90	0.1%
Gadsden	17	7.1%	136	56.7%	11	4.6%	76	31.7%	0	0.0%	240	0.2%
Jefferson	5	4.2%	49	40.8%	13	10.8%	52	43.3%	1	0.8%	120	0.1%
Leon	353	19.9%	808	45.4%	92	5.2%	466	26.2%	59	3.3%	1,778	1.6%
Liberty	2	3.3%	37	60.7%	3	4.9%	19	31.1%	0	0.0%	61	0.1%
Wakulla	1	4.2%	8	33.3%	0	0.0%	15	62.5%	0	0.0%	24	0.0%
3 Columbia	36	4.8%	245	32.5%	131	17.4%	341	45.3%	0	0.0%	753	0.7%
Dixie	15	14.7%	36	35.3%	18	17.6%	33	32.4%	0	0.0%	102	0.1%
Hamilton	1	3.6%	7	25.0%	1	3.6%	19	67.9%	0	0.0%	28	0.0%
Lafayette	0	0.0%	23	41.8%	6	10.9%	26	47.3%	0	0.0%	55	0.0%
Madison	0	0.0%	8	88.9%	0	0.0%	1	11.1%	0	0.0%	9	0.0%
Suwannee	1	0.7%	45	33.1%	12	8.8%	78	57.4%	0	0.0%	136	0.1%
Taylor	8	3.8%	120	56.6%	33	15.6%	51	24.1%	0	0.0%	212	0.2%
4 Clay	458	36.3%	336	26.6%	32	2.5%	432	34.3%	3	0.2%	1,261	1.1%
Duval	980	25.7%	271	7.1%	45	1.2%	2,524	66.1%	0	0.0%	3,820	3.4%
Nassau	0	0.0%	2	1.2%	0	0.0%	168	98.8%	0	0.0%	170	0.1%
5 Citrus	102	14.4%	340	48.2%	71	10.1%	161	22.8%	32	4.5%	706	0.6%
Hernando	251	24.1%	403	38.7%	95	9.1%	282	27.1%	10	1.0%	1,041	0.9%
Lake	286	17.2%	947	56.9%	98	5.9%	300	18.0%	32	1.9%	1,663	1.5%
Marion	709	23.7%	1,098	36.7%	149	5.0%	906	30.3%	127	4.2%	2,989	2.6%

Sanctions by County

(Scoresheets Received through September 1, 2010 for Offenders
Sentenced between July 1, 2009 and June 30, 2010)**

Judicial Circuit Number / County	Sanction on Scoresheet										Total	
	County Jail		Probation		Community Control		State Prison		Other Disposition**			
Sumter	82	19.1%	173	40.2%	21	4.9%	154	35.8%	0	0.0%	430	0.4%

Sanctions by County

(Scoresheets Received through September 1, 2010 for Offenders
Sentenced between July 1, 2009 and June 30, 2010)**

Judicial Circuit Number / County	Sanction on Scoresheet										Total	
	County Jail		Probation		Community Control		State Prison		Other Disposition**			
6 Pasco	562	15.2%	1,568	42.5%	434	11.8%	1,061	28.7%	66	1.8%	3,691	3.2%
Pinellas	3,402	30.8%	4,276	38.7%	433	3.9%	2,378	21.5%	557	5.0%	11,046	9.7%
7 Flagler	1	0.8%	71	53.8%	19	14.4%	41	31.1%	0	0.0%	132	0.1%
Putnam	97	14.7%	279	42.3%	17	2.6%	207	31.4%	59	9.0%	659	0.6%
St. Johns	15	7.0%	151	70.9%	5	2.3%	42	19.7%	0	0.0%	213	0.2%
Volusia	1,026	27.5%	1,510	40.5%	237	6.4%	918	24.6%	36	1.0%	3,727	3.3%
8 Alachua	319	20.3%	577	36.8%	71	4.5%	543	34.6%	60	3.8%	1,570	1.4%
Baker	25	17.2%	65	44.8%	20	13.8%	25	17.2%	10	6.9%	145	0.1%
Bradford	40	21.2%	99	52.4%	9	4.8%	31	16.4%	10	5.3%	189	0.2%
Gilchrist	10	13.3%	40	53.3%	1	1.3%	23	30.7%	1	1.3%	75	0.1%
Levy	0	0.0%	0	0.0%	0	0.0%	0	0.0%	0	0.0%	0	0.0%
Union	21	17.6%	54	45.4%	8	6.7%	34	28.6%	2	1.7%	119	0.1%
9 Orange	2,681	32.7%	3,298	40.3%	298	3.6%	1,867	22.8%	48	0.6%	8,192	7.2%
Osceola	646	26.2%	1,022	41.4%	243	9.8%	520	21.1%	38	1.5%	2,469	2.2%
10 Hardee	8	6.7%	61	51.3%	21	17.6%	29	24.4%	0	0.0%	119	0.1%
Highlands	84	11.0%	350	45.8%	63	8.2%	234	30.6%	34	4.4%	765	0.7%
Polk	568	13.0%	1,570	35.9%	491	11.2%	1,737	39.8%	3	0.1%	4,369	3.8%
11 Miami-Dade	2,700	32.2%	4,132	49.3%	295	3.5%	1,260	15.0%	0	0.0%	8,387	7.4%
12 Desoto	74	19.8%	137	36.7%	44	11.8%	115	30.8%	3	0.8%	373	0.3%
Manatee	475	32.3%	502	34.2%	120	8.2%	371	25.3%	1	0.1%	1,469	1.3%
Sarasota	848	34.0%	969	38.9%	155	6.2%	456	18.3%	63	2.5%	2,491	2.2%
13 Hillsborough	1,468	19.4%	3,315	43.8%	463	6.1%	2,258	29.8%	71	0.9%	7,575	6.7%
14 Bay	37	1.8%	857	42.2%	241	11.9%	869	42.8%	27	1.3%	2,031	1.8%
Calhoun	13	8.7%	67	44.7%	11 20	13.3%	48	32.0%	2	1.3%	150	0.1%

Sanctions by County

(Scoresheets Received through September 1, 2010 for Offenders
Sentenced between July 1, 2009 and June 30, 2010)**

Judicial Circuit Number / County	Sanction on Scoresheet										Total	
	County Jail		Probation		Community Control		State Prison		Other Disposition**			
Gulf	0	0.0%	2	7.7%	0	0.0%	24	92.3%	0	0.0%	26	0.0%

Sanctions by County

(Scoresheets Received through September 1, 2010 for Offenders
Sentenced between July 1, 2009 and June 30, 2010)**

Judicial Circuit Number / County	Sanction on Scoresheet										Total	
	County Jail		Probation		Community Control		State Prison		Other Disposition**			
Holmes	0	0.0%	38	79.2%	6	12.5%	4	8.3%	0	0.0%	48	0.0%
Jackson	27	7.9%	178	52.0%	32	9.4%	103	30.1%	2	0.6%	342	0.3%
Washington	1	7.1%	7	50.0%	5	35.7%	1	7.1%	0	0.0%	14	0.0%
15 Palm Beach	2,022	41.9%	1,378	28.6%	107	2.2%	1,303	27.0%	16	0.3%	4,826	4.2%
16 Monroe	82	12.7%	392	60.7%	40	6.2%	96	14.9%	36	5.6%	646	0.6%
17 Broward	1,384	15.0%	5,206	56.4%	422	4.6%	2,098	22.7%	124	1.3%	9,234	8.1%
18 Brevard	197	6.8%	1,416	48.8%	369	12.7%	917	31.6%	0	0.0%	2,899	2.5%
Seminole	376	20.0%	1,029	54.6%	126	6.7%	352	18.7%	1	0.1%	1,884	1.7%
19 Indian River	254	25.7%	432	43.6%	55	5.6%	234	23.6%	15	1.5%	990	0.9%
Martin	155	14.8%	356	33.9%	74	7.1%	433	41.3%	31	3.0%	1,049	0.9%
Okeechobee	59	17.1%	122	35.3%	22	6.4%	143	41.3%	0	0.0%	346	0.3%
St. Lucie	648	27.7%	698	29.8%	78	3.3%	856	36.6%	60	2.6%	2,340	2.1%
20 Charlotte	215	18.2%	451	38.1%	97	8.2%	421	35.6%	0	0.0%	1,184	1.0%
Collier	422	28.5%	547	36.9%	118	8.0%	388	26.2%	6	0.4%	1,481	1.3%
Glades	11	19.6%	36	64.3%	1	1.8%	6	10.7%	2	3.6%	56	0.0%
Hendry	85	23.0%	160	43.4%	12	3.3%	110	29.8%	2	0.5%	369	0.3%
Lee	1,087	25.3%	1,924	44.9%	154	3.6%	1,119	26.1%	5	0.1%	4,289	3.8%
Statewide	26,868	23.6%	47,012	41.3%	6,957	6.1%	31,178	27.4%	1,880	1.7%	113,895	100.0%

Note: County jail includes time served and state prison includes life sentences.

* Total number of scoresheets received by the Department, including those with offense dates between October 1, 1995 and May 24, 1997.

** "Other Disposition" includes fines, county and non-reporting probation, termination of probation and re-instatement to probation.

**Total Admissions To Prison
Fiscal Year 2009-2010
By County of Commitment**

County	Total	Percent
ALACHUA	716	2.0%
BAKER	56	0.2%
BAY	917	2.5%
BRADFORD	59	0.2%
BREVARD	1,179	3.2%
BROWARD	2,598	7.1%
CALHOUN	38	0.1%
CHARLOTTE	402	1.1%
CITRUS	273	0.7%
CLAY	409	1.1%
COLLIER	412	1.1%
COLUMBIA	311	0.9%
MIAMI-DADE	2,198	6.0%
DESOTO	122	0.3%
DIXIE	66	0.2%
DUVAL	2,513	6.9%
ESCAMBIA	1,062	2.9%
FLAGLER	76	0.2%
FRANKLIN	53	0.1%
GADSDEN	173	0.5%
GILCHRIST	31	0.1%
GLADES	26	0.1%
GULF	32	0.1%
HAMILTON	34	0.1%
HARDEE	66	0.2%
HENDRY	109	0.3%
HERNANDO	318	0.9%
HIGHLANDS	255	0.7%
HILLSBOROUGH	2,908	8.0%
HOLMES	62	0.2%
INDIAN RIVER	237	0.7%
JACKSON	115	0.3%
JEFFERSON	57	0.2%
LAFAYETTE	24	0.1%
LAKE	635	1.7%
LEE	987	2.7%

County	Total	Percent
LEON	747	2.1%
LEVY	155	0.4%
LIBERTY	28	0.1%
MADISON	36	0.1%
MANATEE	563	1.5%
MARION	891	2.4%
MARTIN	452	1.2%
MONROE	195	0.5%
NASSAU	148	0.4%
OKALOOSA	312	0.9%
OKEECHOBEE	193	0.5%
ORANGE	1,876	5.2%
OSCEOLA	527	1.4%
PALM BEACH	1,461	4.0%
PASCO	963	2.6%
PINELLAS	2,240	6.2%
POLK	1,845	5.1%
PUTNAM	240	0.7%
ST. JOHNS	291	0.8%
ST. LUCIE	860	2.4%
SANTA ROSA	336	0.9%
SARASOTA	505	1.4%
SEMINOLE	404	1.1%
SUMTER	116	0.3%
SUWANNEE	197	0.5%
TAYLOR	82	0.2%
UNION	31	0.1%
VOLUSIA	939	2.6%
WAKULLA	70	0.2%
WALTON	87	0.2%
WASHINGTON	76	0.2%
Other States	19	0.1%
Data Unavailable	580	
TOTAL	36,994	

**Total Admissions To Prison
Fiscal Year 2009-2010
By Circuit**

CIRCUIT 1	1,797
CIRCUIT 2	1,128
CIRCUIT 3	750
CIRCUIT 4	3,070
CIRCUIT 5	2,233
CIRCUIT 6	3,203
CIRCUIT 7	1,546
CIRCUIT 8	1,048
CIRCUIT 9	2,403
CIRCUIT 10	2,166

CIRCUIT 11	2,198
CIRCUIT 12	1,190
CIRCUIT 13	2,908
CIRCUIT 14	1,240
CIRCUIT 15	1,461
CIRCUIT 16	195
CIRCUIT 17	2,598
CIRCUIT 18	1,583
CIRCUIT 19	1,742
CIRCUIT 20	1,936

Questions regarding this report should be directed to:

Research Manager
Florida Department of Corrections
Bureau of Research and Data Analysis
2601 Blair Stone Road
Tallahassee, Florida 32399-2500
(850) 488-1801
dcresearch@mail.dc.state.fl.us