

Inmate Escape Report

Fiscal Year 2007-08

This report provides information for Fiscal Year 2007-08 (July 2007 - June 2008) in reference to attempted escapes, escapes and recaptures from Florida's correctional facilities. This report summarizes the following:

- * Attempted escapes
- * Escapes by level, facility type, and facility type by region
- * Recaptures and recaptures within quarter, by time to recapture, and time to recapture by facility type
- * Escape rates and rates by region, and facility type by region
- * Escapes by facility type, by month
- * Escape rates by region, by quarter

For purposes of this report attempted escape and escape are defined as follows:

Attempted escape: Inmate is apprehended before completion of the escape act.

Escape: Unauthorized absence from the designated facility boundary or absence from any official assignment outside this boundary.

An escape is further defined as one of the following levels:

Level I: Escape from non-secure environment, such as a community correctional center or an outside work squad, in which no Level III behaviors are exhibited.

Level II: Escape from a secure perimeter in which no Level III behaviors are exhibited.

Level III: Escape that involves hostages, weapons/tools, outside assistance, or violence during or after the escape.

An escape rate is defined as the number of escapes/(total population on the last day of the month for each month in the quarter/3)* 1,000.

A perimeter escape is defined as one initiated from inside the perimeter of a correctional facility other than a community release facility.

Summary:

The number of escapes decreased from 142 in FY 2006-07 to 128 in FY 2007-08. All but three of the FY 2007-08 escapes were from work release/contract centers (97.7%). Except for two, all were the least serious type Level 1 escapes (98.4%). There were no escapes from a correctional institution. There were three escapes from a work camp/road prison while on work detail outside the perimeter fence. There were no escapes in FY 2007-08 that constituted a breach of a secured perimeter.

Of the 128 escapes, 125 (97.7%) were recaptured by July 17, 2008. Of the 125 recaptures, 112 (89.6%) were recaptured within the quarter in which the escape occurred. Of the 112 recaptured within the quarter, 56 (50.0%) were recaptured within 24 hours of the escape.

The overall escape rate decreased from 1.57 in FY 2006-07 to 1.35 in FY 2007-08. The escape rate for correctional institutions was 0.00 and the escape rate for work camps/road prison was 0.28.

There were two attempted and foiled escapes from Florida correctional facilities during FY 2007-08.

Escapes (July 2007 - June 2008)

| Escapes* | 1st Quarter (Jul-Sep 2007) | | 2nd Quarter (Oct-Dec 2007) | | 3rd Quarter (Jan-Mar 2008) | | 4th Quarter (Apr-Jun 2008) | | Fiscal Year 2007/2008 | |
|--------------------------------------|-------------------------------|--------------|-------------------------------|--------------|-------------------------------|---------------|-------------------------------|---------------|--------------------------|--------------|
| Escapes | 52 | | 23 | | 25 | | 28 | | 128 | |
| Perimeter Escapes | 0 | | 0 | | 0 | | 0 | | 0 | |
| Level | | | | | | | | | | |
| Level I | 52 | 100.0% | 21 | 91.3% | 25 | 100.0% | 28 | 100.0% | 126 | 98.4% |
| Level II | 0 | 0.0% | 0 | 0.0% | 0 | 0.0% | 0 | 0.0% | 0 | 0.0% |
| Level III | 0 | 0.0% | 2 | 8.7% | 0 | 0.0% | 0 | 0.0% | 2 | 1.6% |
| Not Rated | 0 | 0.0% | 0 | 0.0% | 0 | 0.0% | 0 | 0.0% | 0 | 0.0% |
| Facility Type | | | | | | | | | | |
| Correctional Institutions | 0 | 0.0% | 0 | 0.0% | 0 | 0.0% | 0 | 0.0% | 0 | 0.0% |
| Work Camps/Road Prisons | 1 | 1.9% | 2 | 8.7% | 0 | 0.0% | 0 | 0.0% | 3 | 2.3% |
| Work Release/Contract Centers | 51 | 98.1% | 21 | 91.3% | 25 | 100.0% | 28 | 100.0% | 125 | 97.7% |
| Facility Type by Region | | | | | | | | | | |
| Correctional Institutions | 0 | 0.0% | 0 | 0.0% | 0 | 0.0% | 0 | 0.0% | 0 | 0.0% |
| Region I | 0 | 0.0% | 0 | 0.0% | 0 | 0.0% | 0 | 0.0% | 0 | 0.0% |
| Region II | 0 | 0.0% | 0 | 0.0% | 0 | 0.0% | 0 | 0.0% | 0 | 0.0% |
| Region III | 0 | 0.0% | 0 | 0.0% | 0 | 0.0% | 0 | 0.0% | 0 | 0.0% |
| Region IV | 0 | 0.0% | 0 | 0.0% | 0 | 0.0% | 0 | 0.0% | 0 | 0.0% |
| Work Camps/Road Prisons | 1 | 1.9% | 2 | 8.7% | 0 | 0.0% | 0 | 0.0% | 3 | 2.3% |
| Region I | 0 | 0.0% | 0 | 0.0% | 0 | 0.0% | 0 | 0.0% | 0 | 0.0% |
| Region II | 0 | 0.0% | 2 | 100.0% | 0 | 0.0% | 0 | 0.0% | 2 | 66.7% |
| Region III | 1 | 100.0% | 0 | 0.0% | 0 | 0.0% | 0 | 0.0% | 1 | 33.3% |
| Region IV | 0 | 0.0% | 0 | 0.0% | 0 | 0.0% | 0 | 0.0% | 0 | 0.0% |
| Work Release/Contract Centers | 51 | 98.1% | 21 | 91.3% | 25 | 100.0% | 28 | 100.0% | 125 | 97.7% |
| Region I | 3 | 5.9% | 1 | 4.8% | 1 | 4.0% | 2 | 7.1% | 7 | 5.6% |
| Region II | 5 | 9.8% | 2 | 9.5% | 6 | 24.0% | 7 | 25.0% | 20 | 16.0% |
| Region III | 11 | 21.6% | 4 | 19.0% | 6 | 24.0% | 7 | 25.0% | 28 | 22.4% |
| Region IV | 32 | 62.7% | 14 | 66.7% | 12 | 48.0% | 12 | 42.9% | 70 | 56.0% |

*Numbers may differ from previous reports as facilities may change types across time and the number and level of escape may be updated upon receipt of further information.

Recaptures (July 2007- June 2008)

| Recaptures* | 1st Quarter (Jul-Sep 2007) | | 2nd Quarter (Oct-Dec 2007) | | 3rd Quarter (Jan-Mar 2008) | | 4th Quarter (Apr-Jun 2008) | | Fiscal Year 2007/2008 | |
|---|-------------------------------|--------------|-------------------------------|--------------|-------------------------------|---------------|-------------------------------|---------------|--------------------------|--------------|
| Escapes | 52 | | 23 | | 25 | | 28 | | 128 | |
| Recaptured | 52 | 100.0% | 23 | 100.0% | 24 | 96.0% | 26 | 92.9% | 125 | 97.7% |
| Not Recaptured | 0 | 0.0% | 0 | 0.0% | 1 | 4.0% | 2 | 7.1% | 3 | 2.3% |
| Recaptured Within Quarter | 48 | 92.3% | 19 | 82.6% | 20 | 83.3% | 25 | 96.2% | 112 | 89.6% |
| Time to Recapture Within Quarter | | | | | | | | | | |
| Less Than or Equal To 24 Hours | 19 | 39.6% | 9 | 47.4% | 13 | 65.0% | 15 | 60.0% | 56 | 50.0% |
| Greater Than 24 Hours Within Quarter | 29 | 60.4% | 10 | 52.6% | 7 | 35.0% | 10 | 40.0% | 56 | 50.0% |
| Recaptures by Facility Type Within Quarter | | | | | | | | | | |
| Correctional Institutions | 0 | 0.0% | 0 | 0.0% | 0 | 0.0% | 0 | 0.0% | 0 | 0.0% |
| Less Than or Equal To 24 Hours | 0 | 0.0% | 0 | 0.0% | 0 | 0.0% | 0 | 0.0% | 0 | 0.0% |
| Greater Than 24 Hours | 0 | 0.0% | 0 | 0.0% | 0 | 0.0% | 0 | 0.0% | 0 | 0.0% |
| Work Camps/Road Prisons | 1 | 2.1% | 2 | 10.5% | 0 | 0.0% | 0 | 0.0% | 3 | 2.7% |
| Less Than or Equal To 24 Hours | 0 | 0.0% | 2 | 100.0% | 0 | 0.0% | 0 | 0.0% | 2 | 66.7% |
| Greater Than 24 Hours | 1 | 100.0% | 0 | 0.0% | 0 | 0.0% | 0 | 0.0% | 1 | 33.3% |
| Work Release/Contract Centers | 47 | 97.9% | 17 | 89.5% | 20 | 100.0% | 25 | 100.0% | 109 | 97.3% |
| Less Than or Equal To 24 Hours | 19 | 40.4% | 7 | 41.2% | 13 | 65.0% | 15 | 60.0% | 54 | 49.5% |
| Greater Than 24 Hours | 28 | 59.6% | 10 | 58.8% | 7 | 35.0% | 10 | 40.0% | 55 | 50.5% |

*The Recaptured/Not Recaptured categories may change over time as past escapes are recaptured.

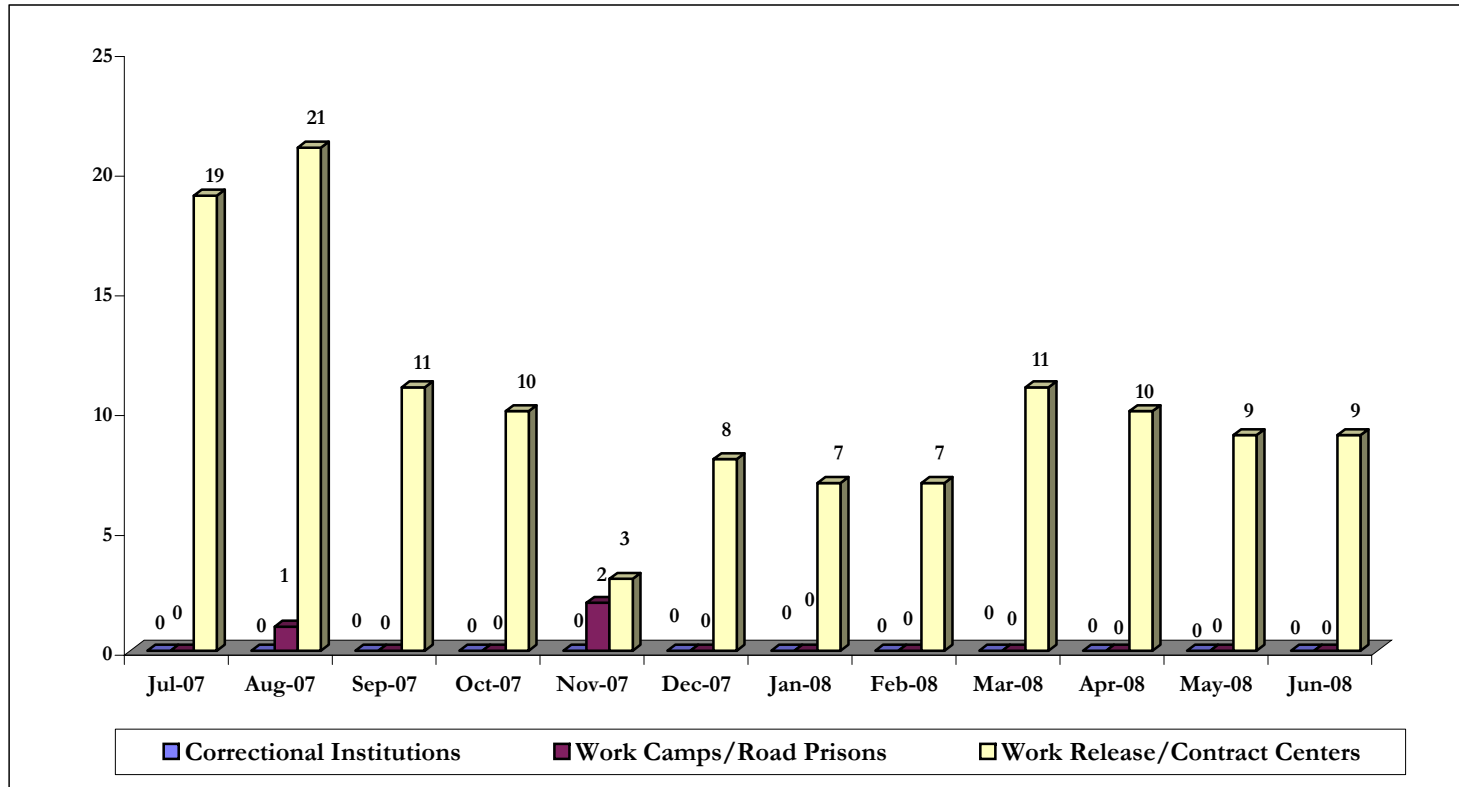
Breakdown of recaptured information is based on those escapes recaptured within the quarter in which the escape occurred.

Escape Rates (July 2007 - June 2008)

| Escape Rate* by Region | 1st Quarter (Jul-Sep 2007) | 2nd Quarter (Oct-Dec 2007) | 3rd Quarter (Jan-Mar 2008) | 4th Quarter (Apr-Jun 2008) | Fiscal Year 2007/2008 |
|--------------------------------------|-------------------------------|-------------------------------|-------------------------------|-------------------------------|--------------------------|
| Escapes | 52 | 23 | 25 | 28 | 128 |
| Escape Rate | 0.56 | 0.24 | 0.26 | 0.29 | 1.35 |
| Region | | | | | |
| Region I | 0.11 | 0.04 | 0.03 | 0.07 | 0.25 |
| Region II | 0.19 | 0.15 | 0.22 | 0.26 | 0.82 |
| Region III | 0.67 | 0.22 | 0.33 | 0.38 | 1.60 |
| Region IV | 1.53 | 0.67 | 0.57 | 0.56 | 3.31 |
| Facility Type by Region | | | | | |
| Correctional Institutions | 0.00 | 0.00 | 0.00 | 0.00 | 0.00 |
| Region I | 0.00 | 0.00 | 0.00 | 0.00 | 0.00 |
| Region II | 0.00 | 0.00 | 0.00 | 0.00 | 0.00 |
| Region III | 0.00 | 0.00 | 0.00 | 0.00 | 0.00 |
| Region IV | 0.00 | 0.00 | 0.00 | 0.00 | 0.00 |
| Work Camps/Road Prisons | 0.09 | 0.19 | 0.00 | 0.00 | 0.28 |
| Region I | 0.00 | 0.00 | 0.00 | 0.00 | 0.00 |
| Region II | 0.00 | 0.65 | 0.00 | 0.00 | 0.61 |
| Region III | 0.46 | 0.00 | 0.00 | 0.00 | 0.47 |
| Region IV | 0.00 | 0.00 | 0.00 | 0.00 | 0.00 |
| Work Release/Contract Centers | 16.26 | 6.73 | 7.94 | 8.56 | 39.44 |
| Region I | 10.00 | 3.34 | 3.34 | 6.76 | 23.45 |
| Region II | 9.82 | 3.97 | 11.86 | 13.97 | 39.60 |
| Region III | 10.08 | 3.65 | 5.46 | 5.65 | 24.76 |
| Region IV | 25.85 | 11.47 | 9.64 | 9.71 | 56.68 |

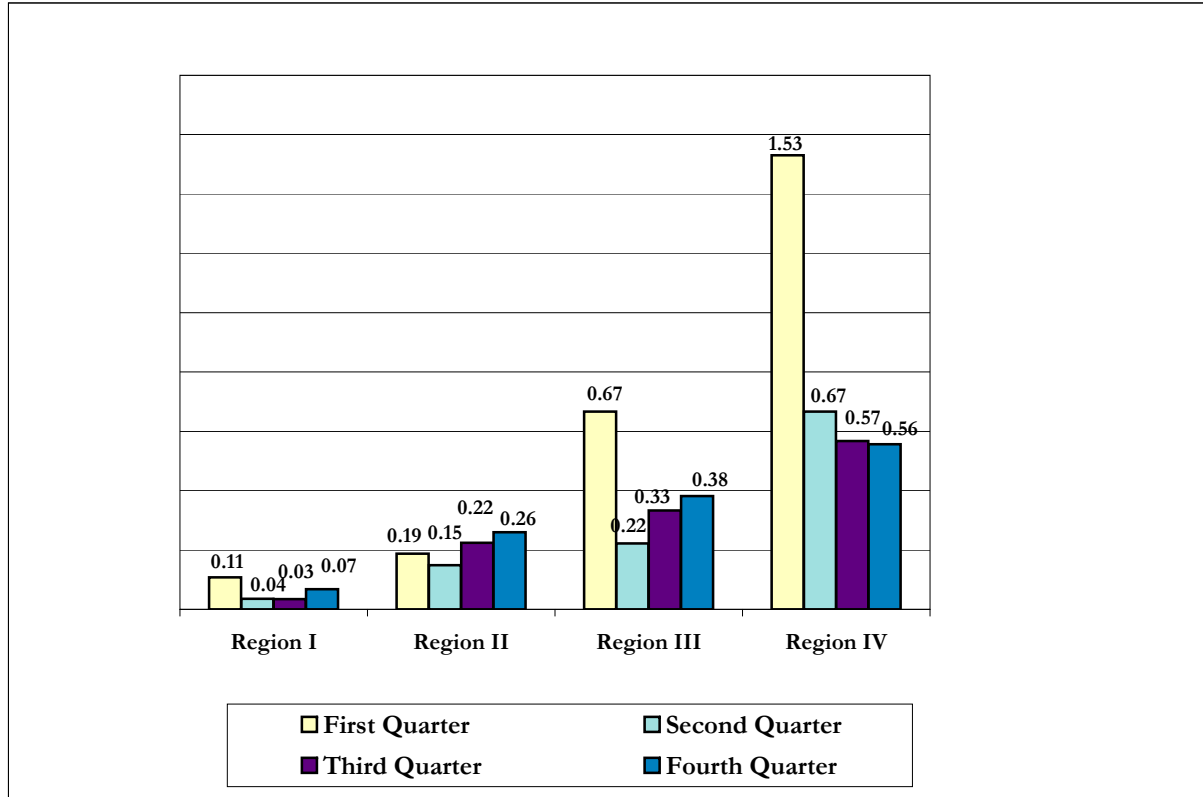
*Escape rate defined as the number of escapes/(total population on the last day of the month for each month in the quarter/3)*1,000.

Escapes by Facility Type, by Month (July 2007 - June 2008)



Escape Rate by Region, by Quarter

(July 2007 - June 2008)



Escapes by Region/Facility

(July 2007 - June 2008)

Region 1

| Region/Institution | 1st Quarter (Jul-Sep 2007) | 2nd Quarter (Oct-Dec 2007) | 3rd Quarter (Jan-Mar 2008) | 4th Quarter (Apr-Jun 2008) | Fiscal Year 2007/2008 |
|--------------------------------------|-------------------------------|-------------------------------|-------------------------------|-------------------------------|--------------------------|
| Total Escapes | 52 | 23 | 25 | 28 | 128 |
| Region 1 | 3 | 1 | 1 | 2 | 7 |
| Correctional Institutions | 0 | 0 | 0 | 0 | 0 |
| 101-Apalachee West CI | | | | | |
| 102-Apalachee East CI | | | | | |
| 103-Jefferson CI | | | | | |
| 104-Jackson CI | | | | | |
| 105-Calhon CI | | | | | |
| 106-Century CI | | | | | |
| 107-Holmes CI | | | | | |
| 108-Walton CI | | | | | |
| 109-Gulf CI | | | | | |
| 110-Washington CI | | | | | |
| 111-Gadsden CI (Private) | | | | | |
| 112-Bay CF (Private) | | | | | |
| 113-Franklin CI | | | | | |
| 115-Okaloosa CI | | | | | |
| 118-Wakulla CI | | | | | |
| 119-Santa Rosa CI | | | | | |
| 120-Liberty CI | | | | | |
| 125-Washington Annex | | | | | |
| 135-Santa Rosa Annex | | | | | |
| 139-Quincy Annex (Liberty CI) | | | | | |
| 150-Gulf CI Annex | | | | | |
| Work Camps/Road Prisons | 0 | 0 | 0 | 0 | 0 |
| 114-River Junction Work Camp | | | | | |
| 121-Liberty Work Camp | | | | | |
| 134-Tallahassee Road Prison | | | | | |
| 136-Caryville Work Camp | | | | | |
| 160-Graceville Work Camp | | | | | |
| 161-Okaloosa Work Camp | | | | | |
| 162-Holmes Work Camp | | | | | |
| 165-Calhoun Work Camp | | | | | |
| 166-Jackson Work Camp | | | | | |
| 167-Century Work Camp | | | | | |
| 170-Gulf Forestry Camp | | | | | |
| 171-Bay City Work Camp | | | | | |
| 172-Walton Work Camp | | | | | |
| 173-Wakulla Work Camp | | | | | |
| 177-Berrydale Forestry Camp | | | | | |
| Work Release/Contract Centers | 3 | 1 | 1 | 2 | 7 |
| 163-Panama City WRC | | | | 1 | 1 |
| 164-Pensacola WRC | | | | | |
| 168-Tallahassee WRC | 3 | 1 | 1 | 1 | 6 |
| 187-Shisa House West (Private) | | | | | |

Escapes by Region/Facility (July 2007 - June 2008)

Region 2

| Region/Institution | 1st Quarter (Jul-Sep 2007) | 2nd Quarter (Oct-Dec 2007) | 3rd Quarter (Jan-Mar 2008) | 4th Quarter (Apr-Jun 2008) | Fiscal Year 2007/2008 |
|---------------------------------------|-------------------------------|-------------------------------|-------------------------------|-------------------------------|--------------------------|
| Total Escapes | 52 | 23 | 25 | 28 | 128 |
| Region 2 | 5 | 4 | 6 | 7 | 22 |
| Correctional Institutions | 0 | 0 | 0 | 0 | 0 |
| 201-Columbia CI | | | | | |
| 205-Florida State Prison Main Unit | | | | | |
| 206-New River CI West | | | | | |
| 208-RMC West Unit | | | | | |
| 209-RMC Main Unit | | | | | |
| 210-New River CI East | | | | | |
| 211-Cross City CI | | | | | |
| 212-Mayo CI | | | | | |
| 213-Union CI | | | | | |
| 214-Putnam CI | | | | | |
| 215-Hamilton CI | | | | | |
| 216-Madison CI | | | | | |
| 218-Taylor CI | | | | | |
| 219-Lake City CF (Private) | | | | | |
| 224-Taylor Annex | | | | | |
| 250-Hamilton CI Annex | | | | | |
| 255-Lawtey CI | | | | | |
| 277-Gainesville CI | | | | | |
| 279-Baker CI | | | | | |
| 281-Lancaster CI | | | | | |
| Work Camps/Road Prisons | 0 | 2 | 0 | 0 | 2 |
| 204-Florida State Prison "O" Unit | | | | | |
| 221-RMC Work Camp | | 2 | | | 2 |
| 227-Taylor Work Camp | | | | | |
| 240-Gainesville Work Camp | | | | | |
| 261-Baker Work Camp | | | | | |
| 262-Cross City Work Camp | | | | | |
| 263-Hamilton Work Camp | | | | | |
| 264-Columbia Work Camp | | | | | |
| 265-Mayo Work Camp | | | | | |
| 280-Lancaster Work Camp | | | | | |
| 289-Madison Work Camp | | | | | |
| Work Release/Contract Centers | 5 | 2 | 6 | 7 | 20 |
| 243-Dinsmore WRC | 2 | | 3 | 5 | 10 |
| 249-Lake City WRC | | | 1 | | 1 |
| 266-Santa Fe WRC | | 1 | 2 | 1 | 4 |
| 267-Bridges of Jacksonville (Private) | 3 | | | 1 | 4 |
| 278-Shisa House East (Private) | | 1 | | | 1 |

Escapes by Region/Facility (July 2007 - June 2008)

Region 3

| Region/Institution | 1st Quarter (Jul-Sep 2007) | 2nd Quarter (Oct-Dec 2007) | 3rd Quarter (Jan-Mar 2008) | 4th Quarter (Apr-Jun 2008) | Fiscal Year 2007/2008 |
|---|-------------------------------|-------------------------------|-------------------------------|-------------------------------|--------------------------|
| Total Escapes | 52 | 23 | 25 | 28 | 128 |
| Region 3 | 12 | 4 | 6 | 7 | 29 |
| Correctional Institutions | 0 | 0 | 0 | 0 | 0 |
| 282-Tomoka CI | | | | | |
| 304-Marion CI | | | | | |
| 307-Sumter CI | | | | | |
| 308-Sumter BTU Boot Camp | | | | | |
| 310-Brevard CI | | | | | |
| 312-Lake CI | | | | | |
| 314-Lowell CI Women's Unit | | | | | |
| 320-Central Florida Reception Center Main | | | | | |
| 321-Central Florida Reception Center East | | | | | |
| 323-Central Florida Reception Center South | | | | | |
| 336-Hernando CI | | | | | |
| 366-Lowell CI Boot Camp | | | | | |
| 367- Lowell Annex | | | | | |
| 503-Avon Park CI | | | | | |
| 529-Hillsborough CI | | | | | |
| 573-Zephyrhills CI | | | | | |
| 580-Polk CI | | | | | |
| Work Camps/Road Prisons | 1 | 0 | 0 | 0 | 1 |
| 284-Tomoka Work Camp | | | | | |
| 287-Levy Forestry Camp | | | | | |
| 363-Brevard Work Camp | | | | | |
| 364-Marion Work Camp | | | | | |
| 365-Sumter Work Camp | 1 | | | | 1 |
| 504-Avon Park Work Camp | | | | | |
| 552-Largo Road Prison | | | | | |
| 562-Polk Work Camp | | | | | |
| Work Release/Contract Centers | 11 | 4 | 6 | 7 | 28 |
| 242-Daytona WRC | | | | | |
| 285-Reality House (Private) | | | | | |
| 341-Cocoa WRC | | | | | |
| 345-Suncoast WRC Female (Private) | 1 | | 1 | 1 | 3 |
| 346-Suncoast WRC Male (Private) | | | | | |
| 351-Bridges of Orlando (Private) | 2 | 1 | 2 | 2 | 7 |
| 352-Orlando Transition Center (Private) | | | | | |
| 353-Transition House Inc. Kissimmee (Private) | | | | | |
| 355-Reentry Center of Ocala (Private) | 3 | 2 | 1 | 2 | 8 |
| 361-Orlando WRC | | | | | |
| 374-Kissimmee WRC | 2 | 1 | 1 | | 4 |
| 540-Bartow WRC | | | | 2 | 2 |
| 554-Pinellas WRC | | | | | |
| 572-Tarpon Springs WRC | 1 | | | | 1 |
| 583-St. Petersburg WRC | 2 | | 1 | | 3 |

Escapes by Region/Facility

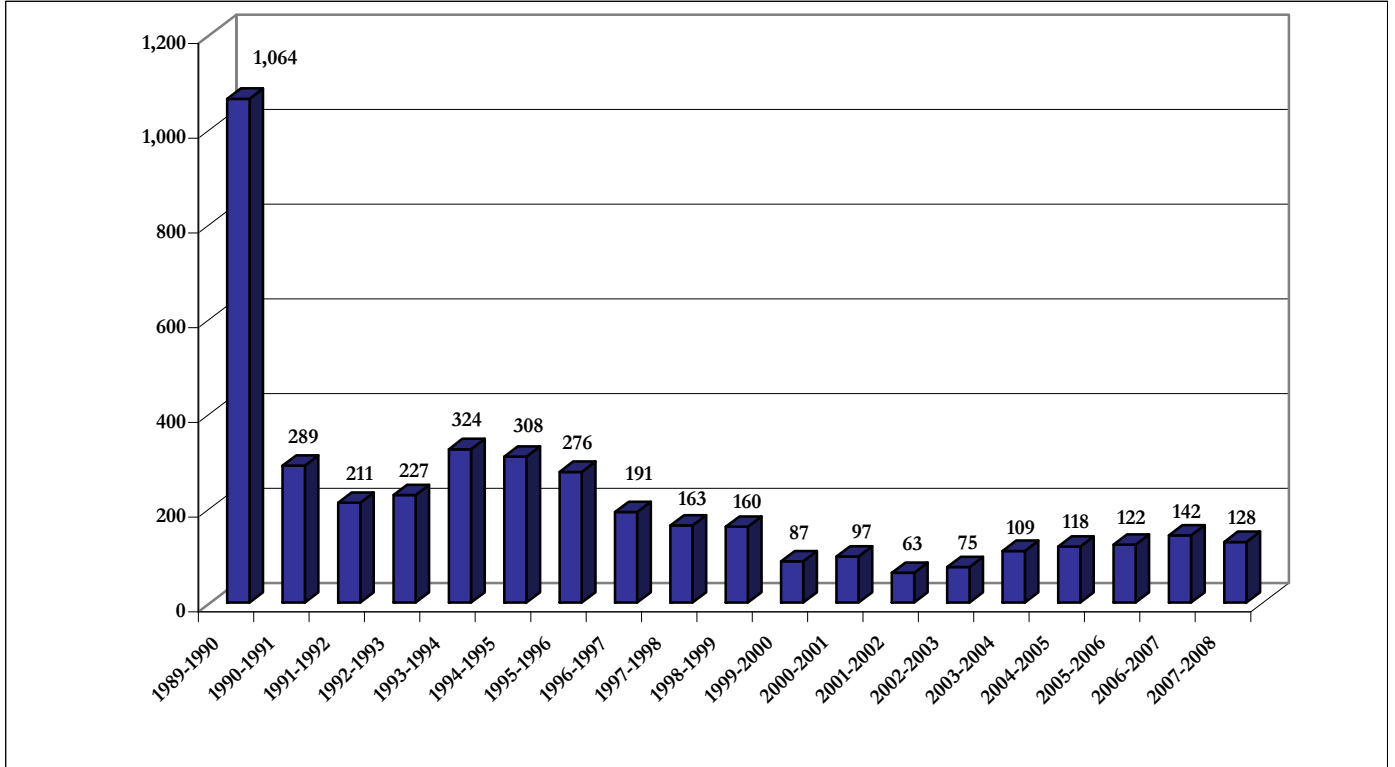
(July 2007 - June 2008)

Region 4

| Region/Institution | 1st Quarter (Jul-Sep 2007) | 2nd Quarter (Oct-Dec 2007) | 3rd Quarter (Jan-Mar 2008) | 4th Quarter (Apr-Jun 2008) | Fiscal Year 2007/2008 |
|--|-------------------------------|-------------------------------|-------------------------------|-------------------------------|--------------------------|
| Total Escapes | 52 | 23 | 25 | 28 | 128 |
| Region 4 | 32 | 14 | 12 | 12 | 70 |
| Correctional Institutions | 0 | 0 | 0 | 0 | 0 |
| 401-Everglades CI | | | | | |
| 402-South Florida Reception Center Main | | | | | |
| 403- SFRC South Unit | | | | | |
| 404-Okeechobee CI | | | | | |
| 405-South Bay CF (Private) | | | | | |
| 406-Glades CI | | | | | |
| 418-Indian River CI | | | | | |
| 419-Homestead CI | | | | | |
| 430-Martin CI | | | | | |
| 463-Dade CI | | | | | |
| 475-Broward CI | | | | | |
| 501-Hardee CI | | | | | |
| 510-Charlotte CI | | | | | |
| 511-Moore Haven CF (Private) | | | | | |
| 564-DeSoto CI Annex | | | | | |
| 576-Hendry CI | | | | | |
| Work Camps/Road Prisons | 0 | 0 | 0 | 0 | 0 |
| 420-Martin Work Camp | | | | | |
| 426-Big Pine Key Road Prison | | | | | |
| 431-Loxahatchee Road Prison | | | | | |
| 462-Glades Work Camp | | | | | |
| 525-Arcadia Road Prison | | | | | |
| 544-Ft. Myers Work Camp | | | | | |
| 560-DeSoto Work Camp | | | | | |
| 561-Hendry Work Camp | | | | | |
| 563-Hardee Work Camp | | | | | |
| Work Release/Contract Centers | 32 | 14 | 12 | 12 | 70 |
| 411-Pompano Transition Center (Private) | 1 | | | 1 | 2 |
| 412-Bradenton Transiton Center (Private) | | | | | |
| 444-Ft. Pierce WRC | 2 | | | | 2 |
| 446-Hollywood WRC | | | | | |
| 452-Atlantic WRC | | | | 1 | 1 |
| 457-Miami North WRC | 4 | 4 | 1 | 1 | 10 |
| 467-Bridges of Pompano WRC (Private) | 20 | 8 | 9 | 5 | 42 |
| 469-West Palm WRC | 1 | 2 | 1 | 4 | 8 |
| 473-Opa Locka WRC | 4 | | 1 | | 5 |
| 481-Martin Unit Treatment Center | | | | | |

Total Escapes

(FY 1989-1990 to FY 2007-2008)



Historical Escape Rates (All Facilities)
(FY 1989-1990 to FY 2007-2008)

| Fiscal Year | Number of Escapes | Average Inmate Population* | Escapes Per 1,000 Inmates |
|--------------------|--------------------------|-----------------------------------|----------------------------------|
| 1989-1990 | 1,064 | 40,396 | 26.34 |
| 1990-1991 | 289 | 44,483 | 6.50 |
| 1991-1992 | 211 | 46,622 | 4.53 |
| 1992-1993 | 227 | 48,808 | 4.65 |
| 1993-1994 | 324 | 53,594 | 6.05 |
| 1994-1995 | 308 | 59,022 | 5.22 |
| 1995-1996 | 276 | 63,163 | 4.37 |
| 1996-1997 | 191 | 64,242 | 2.97 |
| 1997-1998 | 163 | 65,234 | 2.50 |
| 1998-1999 | 160 | 67,227 | 2.38 |
| 1999-2000 | 87 | 69,782 | 1.25 |
| 2000-2001 | 97 | 71,476 | 1.36 |
| 2001-2002 | 63 | 72,485 | 0.87 |
| 2002-2003 | 75 | 75,162 | 1.00 |
| 2003-2004 | 109 | 79,616 | 1.37 |
| 2004-2005 | 118 | 83,140 | 1.42 |
| 2005-2006 | 122 | 86,570 | 1.41 |
| 2006-2007 | 142 | 90,554 | 1.57 |
| 2007-2008 | 128 | 94,528 | 1.35 |

*Inmate populaton average based on four quarters population on last day of each month/4.

Escape Rates for Correctional Institutions
(FY 1993-1994 to FY 2007-2008)

| Fiscal Year | Number of Escapes | Average Inmate Population* | Escapes Per 1,000 Inmates |
|--------------------|--------------------------|-----------------------------------|----------------------------------|
| 1993-1994 | 56 | 42,355 | 1.30 |
| 1994-1995 | 37 | 47,266 | 0.78 |
| 1995-1996 | 13 | 50,006 | 0.26 |
| 1996-1997 | 9 | 53,670 | 0.19 |
| 1997-1998 | 8 | 54,573 | 0.15 |
| 1998-1999 | 4 | 56,135 | 0.07 |
| 1999-2000 | 9 | 58,607 | 0.15 |
| 2000-2001 | 4 | 60,268 | 0.07 |
| 2001-2002 | 2 | 60,813 | 0.03 |
| 2002-2003 | 1 | 62,957 | 0.02 |
| 2003-2004 | 3 | 67,018 | 0.04 |
| 2004-2005 | 8 | 70,546 | 0.11 |
| 2005-2006 | 1 | 73,240 | 0.01 |
| 2006-2007 | 1 | 76,600 | 0.01 |
| 2007-2008 | 0 | 80,477 | 0.00 |

*Inmate populaton average based on four quarters population on last day of each month/4.

The Florida Department of Corrections
Bureau of Research and Data Analysis
Direct questions to David Ensley or Todd Gregory
or email us at: dcresearch@mail.dc.state.fl.us
(850) 488-1801
2601 Blair Stone Road
Tallahassee, Florida 32399-2500