

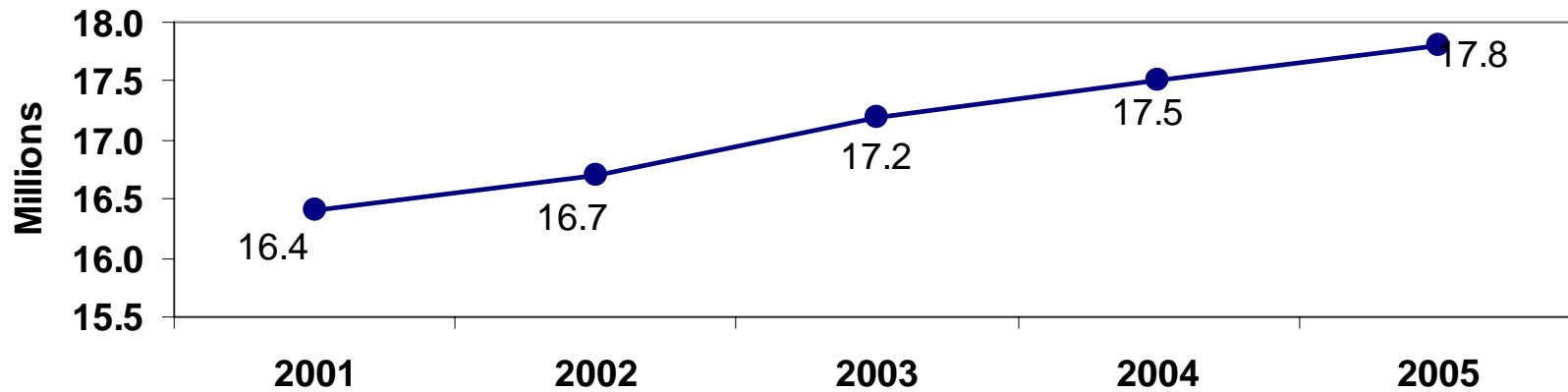
Department of Health
Brain and Spinal Cord Injury Program (BSCIP)

Traumatic Brain and Spinal Cord Injury Statistics
For Moderate-to-Severe Brain and Spinal Cord Injuries

State Fiscal Year (SFY)
2004 – 2005

Setting the Stage

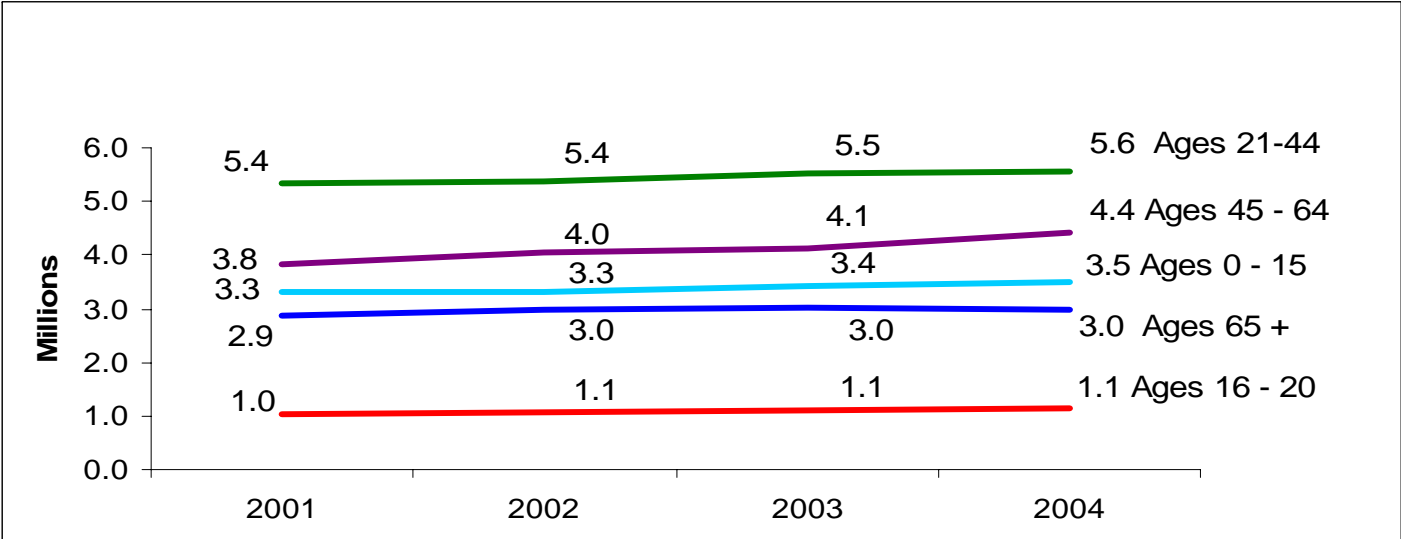
Florida Population



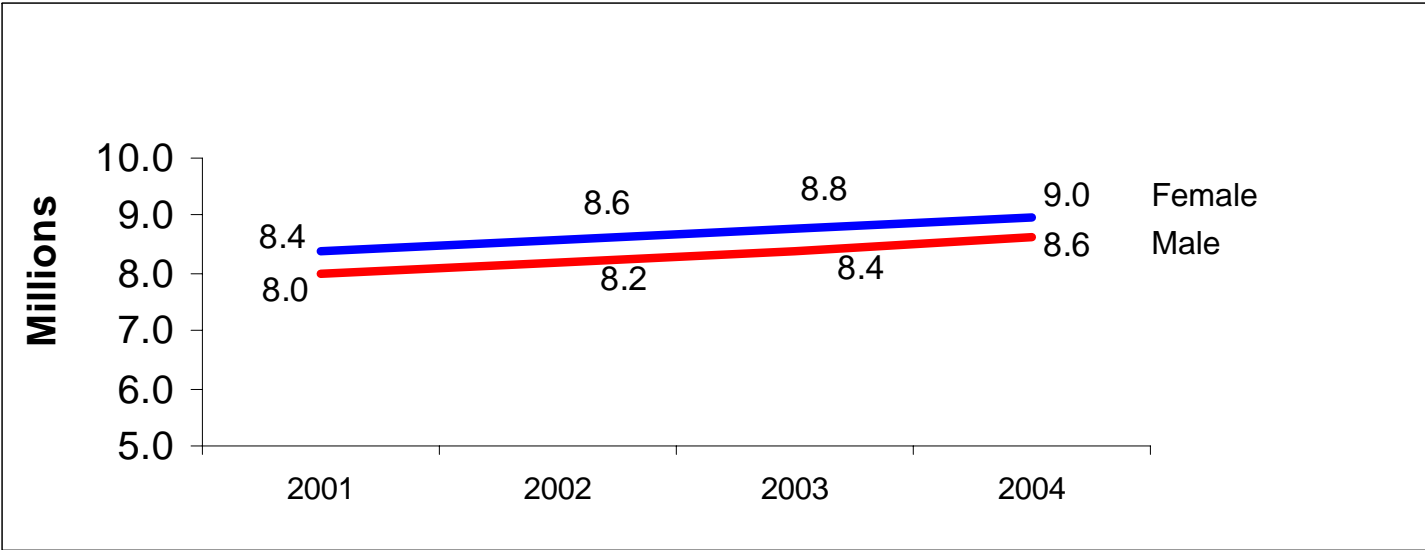
Everything is relative in life, it is important to keep the overall population growth in mind when viewing BSCIP statistics over time.

Source: Florida Legislature Office of Economic Demographic Research

Florida Population



Florida Population By Gender



Source: Florida Legislature Office of Economic Demographic Research

DOH Secretary's Quarterly Performance Indicators

Secretary's Performance Indicators – What are they and how are they used?

Each quarter, all DOH Divisions report key performance indicators directly to the Secretary of the Department of Health. These indicators are used by the Secretary to evaluate the overall status of the program.

BSCIP reports on the following 4 indicators which were added to the Secretary's report in the first quarter of the 2004-2005 SFY.

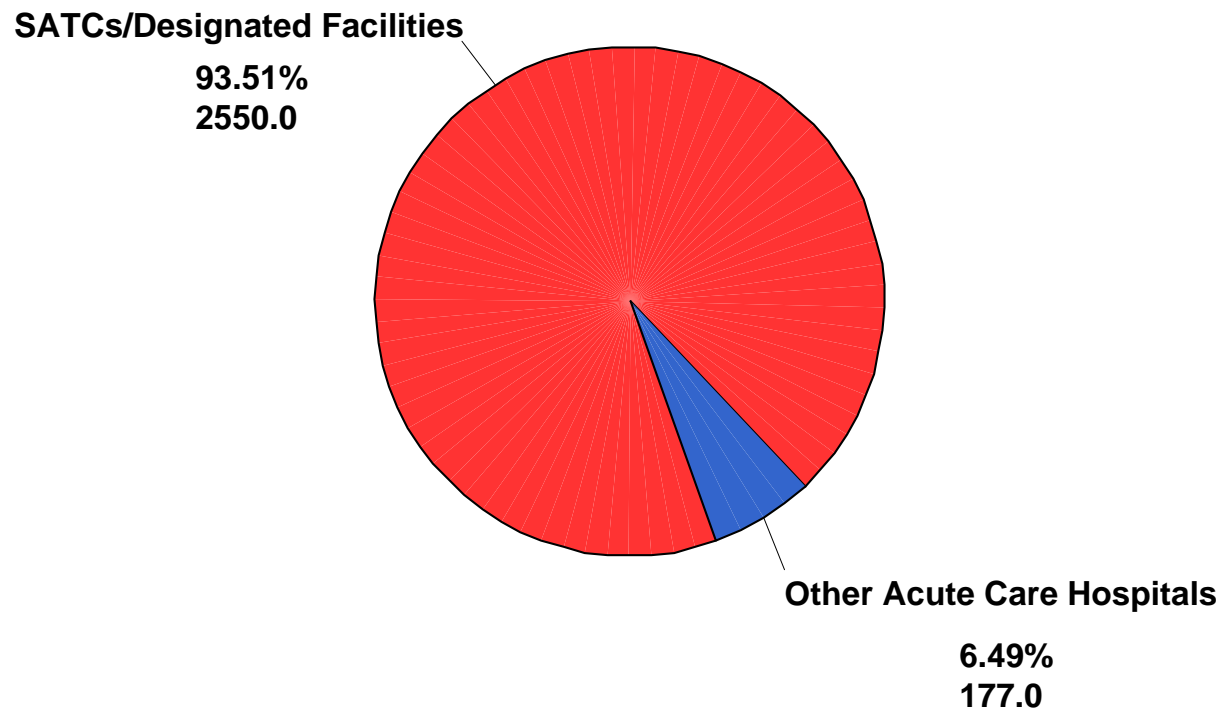
1. Percent of Central Registry Referrals Submitted By State Approved Trauma Centers (SATCs) and BSCIP Designated Facilities
2. Percent of Central Registry Referrals Reported Within 10 Days of Injury
3. Percent of BSCP Eligible Cases Closed as Community Reintegrated
4. Average Consumer Satisfaction Survey Score

Data Interpretation Cautionary Notes:

1. SFY 2004-2005 counts may be lower than expected as the result of a change in the 1st quarter of the year to no longer enter individuals into the Central Registry that died prior to their referral being submitted. This particularly impacts counts for high risk behaviors and/or age groups.
2. Hispanic as a Race/Ethnicity category was not added to the RIMS until the early part of SFY 2002 – 2003.
3. Counts do not include non-Florida injuries.

Indicator 1 - Percent of Referrals Submitted By State Approved Trauma Centers (SATCs) and BSCIP Designated Facilities

Target Goal: 95%

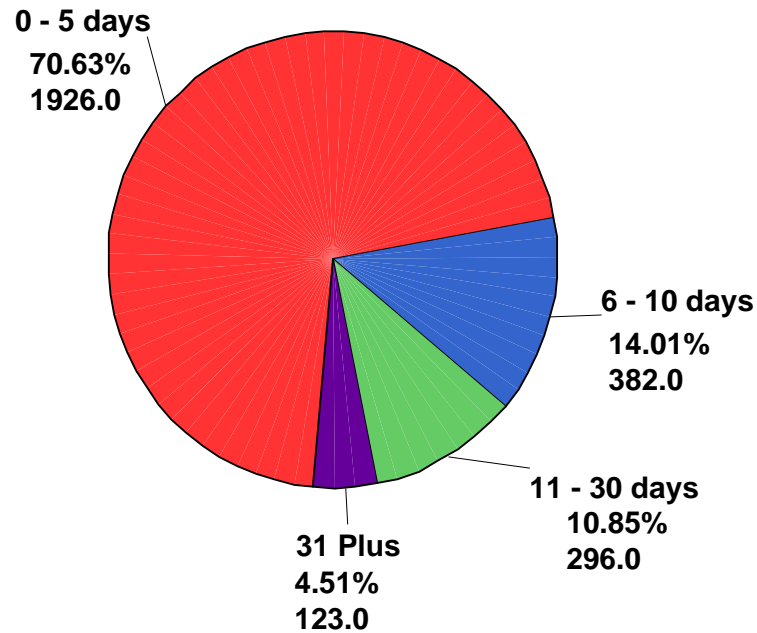


		SFY			
		01 - 02	02 - 03	03 - 04	04 - 05
SATCs/Designated Facilities	Count	2418	2779	2769	2550
	Col %	95.1%	95.1%	94.9%	93.5%
Other Acute Care Hospitals	Count	124	142	149	177
	Col %	4.9%	4.9%	5.1%	6.5%
Table Total	Count	2542	2921	2918	2727
	Col %	100.0%	100.0%	100.0%	100.0%

* Counts include new injuries reported from all SATCs, non-VA acute care hospitals and BSCIP Designated Facilities.

Indicator 2 - Percent of Referrals Reported Within 10 Days of Injury

Target Goal: 95%



84.6 percent of new injuries were reported within 10 days of the date of injury. This is 10.4 percent less than the goal of 95 percent.

An opportunity for improvement!!!

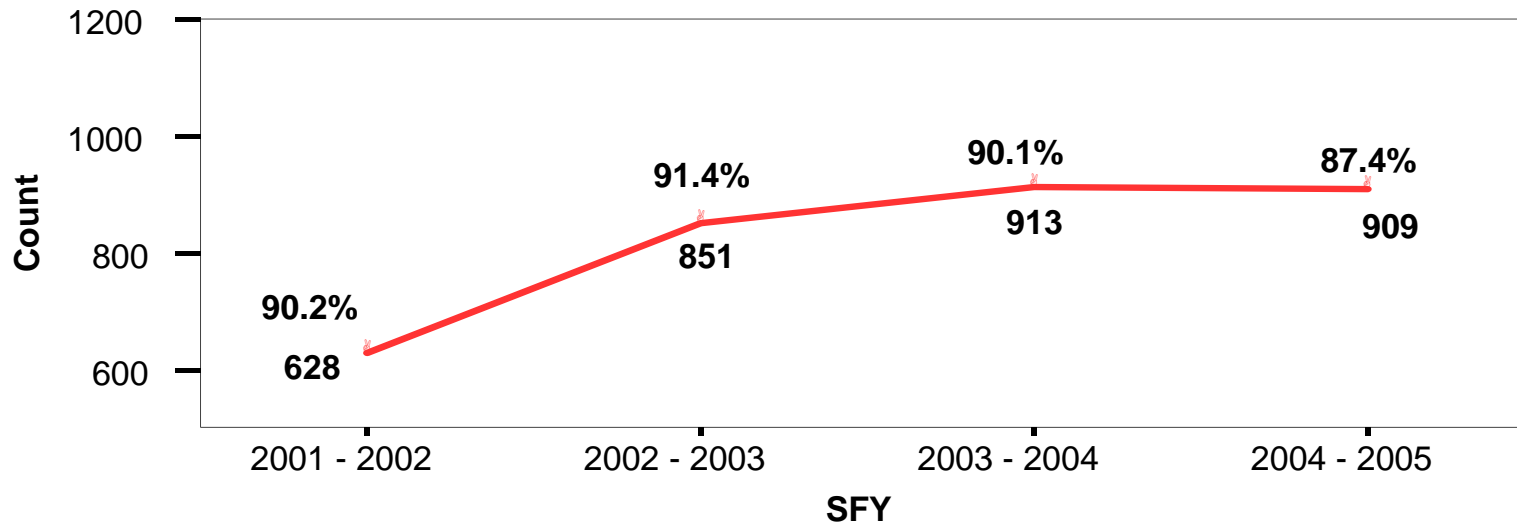
			SFY							
			01 - 02		02 - 03		03 - 04		04 - 05	
			Count	Col %	Count	Col %	Count	Col %	Count	Col %
0 - 10 days	Days Between Injury and Referral Date	0 - 5 days	1875	73.8%	2097	71.8%	2023	69.3%	1926	70.6%
		6 - 10 days	290	11.4%	373	12.8%	402	13.8%	382	14.0%
	Group Total		2165	85.2%	2470	84.6%	2425	83.1%	2308	84.6%
> 10 days	Days Between Injury and Referral Date	11 - 30 days	237	9.3%	319	10.9%	330	11.3%	296	10.9%
		31 Plus	140	5.5%	132	4.5%	163	5.6%	123	4.5%
	Group Total		377	14.8%	451	15.4%	493	16.9%	419	15.4%
Table Total			2542	100.0%	2921	100.0%	2918	100.0%	2727	100.0%

* Counts include new injuries reported from all SATCs, non-VA acute care hospitals and BSCIP Designated Facilities

Indicator 3 - % of BSCIP Eligible Cases Closed as Community Reintegrated

Target Goal: 95%

BSCIP Eligible, Community Reintegration Closures



	2001 - 2002		2002 - 2003		2003 - 2004		2004 - 2005	
	Count	Col %	Count	Col %	Count	Col %	Count	Col %
BSCIP Eligible, Community Reintegration Closures	628	90.2%	851	91.4%	913	90.1%	909	87.2%
BSCIP Eligible, Non-Community Reintegration Closures	68	9.8%	80	8.6%	100	9.9%	133	12.8%

Indicator 4 - BSCIP Eligible Consumer Satisfaction Survey

The Consumer Satisfaction Survey is administered by the Brain Injury Association of Florida and the Spinal Cord Injury Resource Center to all reachable BSCIP eligible clients, 30 days post closure.

The results of this survey are available at the regional level from BSCIP regional managers.

Demographic information is critical to the survey process, and therefore, must be updated every time a change occurs in the client's information.

Indicator 4 – Consumer Satisfaction

Target Goal: ACS 4.5 or higher

Statewide Consumer Satisfaction Survey Results Total Surveys Completed = 62% or 97 of 158 (Brain) Total Surveys Completed = 62% or 29 of 34 (Spinal) SFY 2005 – 2006	Average Consumer Satisfaction Score (ACS)	
	5 = Strongly Agree 1 = Strongly Disagree	
Quarter 1	Brain	Spinal
Total Average	4.3	4.4
My case manager effectively explained BSCIP services.	4.3	4.1
My case manager provided me with info and resources.	4.3	4.1
My case manager had adequate knowledge of services in my area.	4.3	4.5
My case manager responded to my phone calls in a timely manner.	4.3	4.6
My case manager kept our set appointments.	4.2	4.5
My case manager was sensitive to my needs.	4.3	4.6
To my knowledge, my case manager responded to my family's questions.	4.2	4.4
Overall, I was satisfied with the services delivered.	4.2	4.5
Overall, my experience with BSCIP was positive.	4.2	4.5
Overall, my preferences were considered when my services were chosen.	4.2	4.5

Upcoming indicators:

Days Between: Date of Hospital Admission and Date of Referral Submission

Target Goal: XX percent of all referrals submitted within 5 days of the Hospital Admission Date.

Days Between: Referral Status Date and Date of 1st Patient Contact
(Based on date of 1st case note entered for the client)

Target Goal: XX percent of clients contacted within 10 days of the date the case was placed in referral status.

1 Year Follow-up Survey Results: Client's Status 1 Year Post-Closure

Target Goal: TBD

1 Year Follow-up Indicator for BSCIP Eligible Clients

% BSCIP Eligible Clients Needs Met, 1 Year Post Closure As Reported by the Client or the Client's Representative

Survey Questions

- ✓Is your current housing adequate?
- ✓Are you receiving the regular medical care you require?
- ✓Are you able to obtain the medications you require?
- ✓Do you have access to reliable transportation?
- ✓ Do you have family and friends that are available to help?
- ✓Do you participate in social activities in your community?
- ✓Do you receive SSI or SSDI?
- ✓Do you receive Medicaid?
- ✓Do you have necessary equipment and supplies?
- ✓Are you able to return to school or employment?
- ✓Are you able to perform Activities of Daily Living?

Community reintegrated is defined as a client closed from
Plan Status (14) as:

Community Reintegrated, Plan Completed

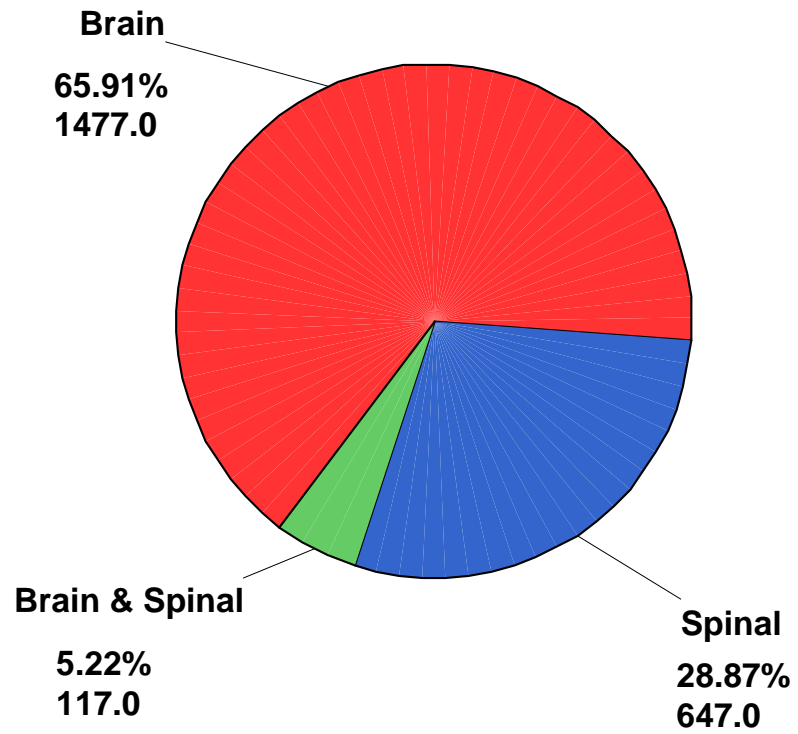
Referred to Vocational Rehabilitation (VR)

Referred to the HCB (Home and Community Based) Medicaid Waiver

Referred to Another Agency

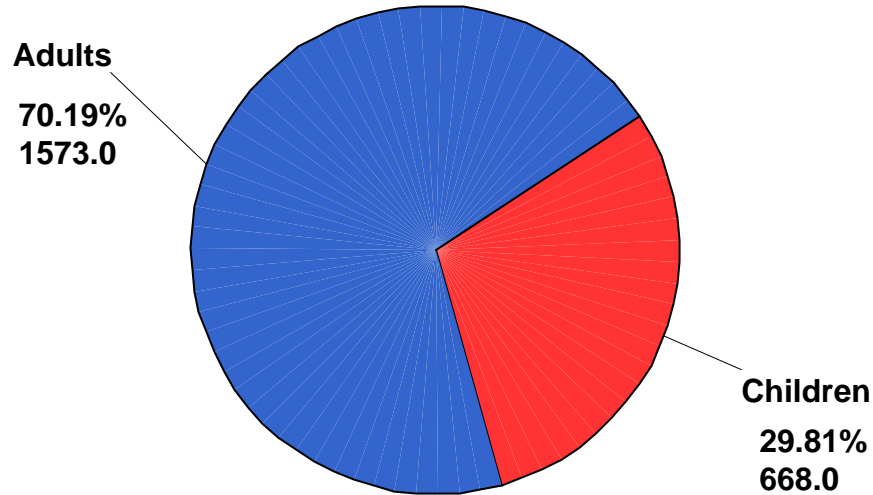
BSCIP Eligible Clients Served
SFY 2004 – 2005

Total Number of Clients Served = 2241



* Includes both open and closed cases that received services during the year.

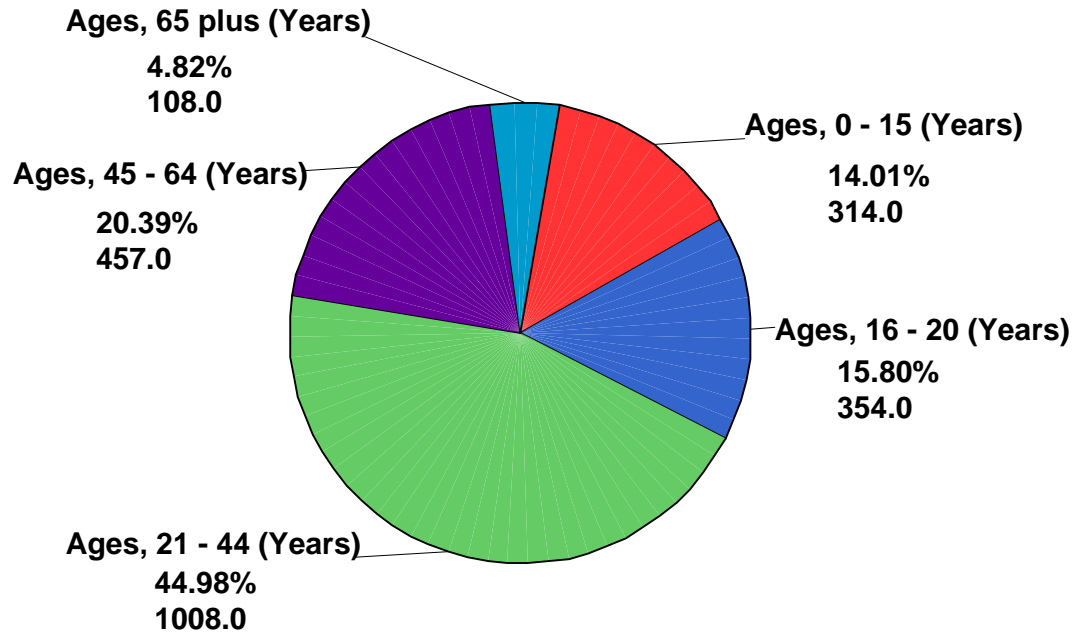
By Age Category



	Brain		Spinal		Brain & Spinal		Table Total	
	Count	Col %	Count	Col %	Count	Col %	Count	Col %
Children	544	36.8%	107	16.5%	17	14.5%	668	29.8%
Adults	933	63.2%	540	83.5%	100	85.5%	1573	70.2%
Table Total	1477	100.0%	647	100.0%	117	100.0%	2241	100.0%

* Includes both open and closed cases that received services during the year.

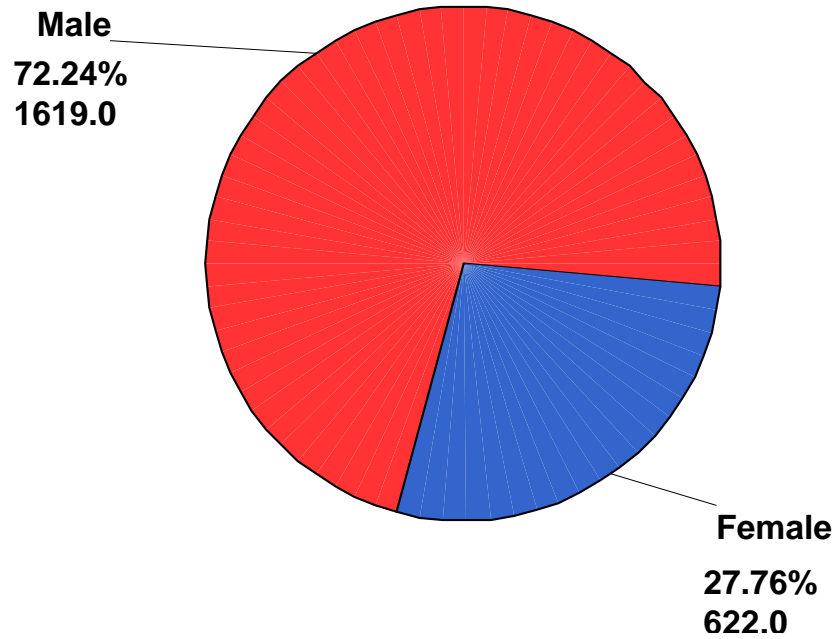
By Age Group



	Brain		Spinal		Brain & Spinal		Table Total	
	Count	Col %	Count	Col %	Count	Col %	Count	Col %
Ages, 0 - 15 (Years)	280	19.0%	27	4.2%	7	6.0%	314	14.0%
Ages, 16 - 20 (Years)	264	17.9%	80	12.4%	10	8.5%	354	15.8%
Ages, 21 - 44 (Years)	605	41.0%	342	52.9%	61	52.1%	1008	45.0%
Ages, 45 - 64 (Years)	267	18.1%	156	24.1%	34	29.1%	457	20.4%
Ages, 65 plus (Years)	61	4.1%	42	6.5%	5	4.3%	108	4.8%
Table Total	1477	100%	647	100%	117	100%	2241	100%

* Includes both open and closed cases that received services during the year.

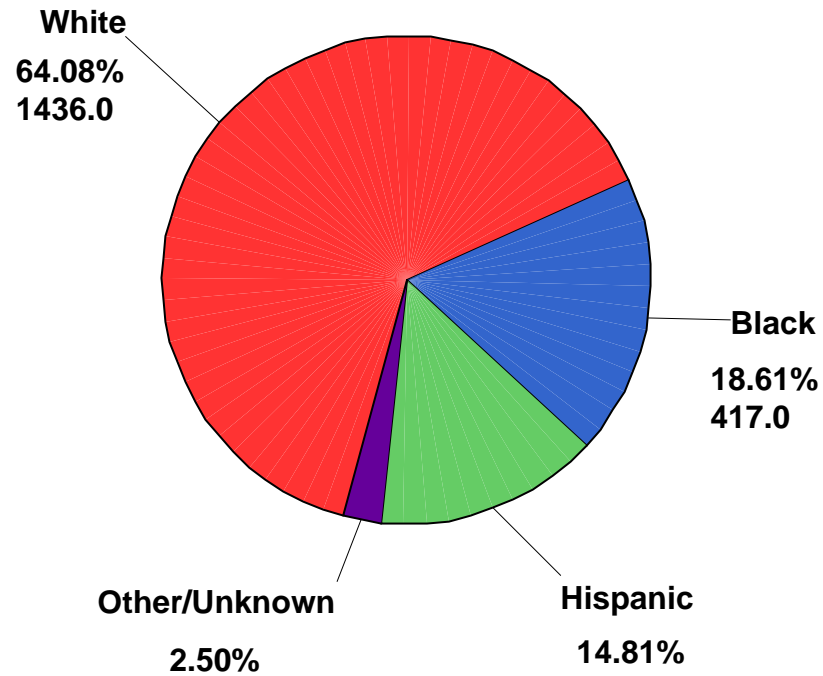
By Gender



	Brain		Spinal		Brain & Spinal		Table Total	
	Count	Col %	Count	Col %	Count	Col %	Count	Col %
Male	1040	70.4%	491	75.9%	88	75.2%	1619	72.2%
Female	437	29.6%	156	24.1%	29	24.8%	622	27.8%
Table Total	1477	100%	647	100%	117	100%	2241	100%

* Includes both open and closed cases that received services during the year.

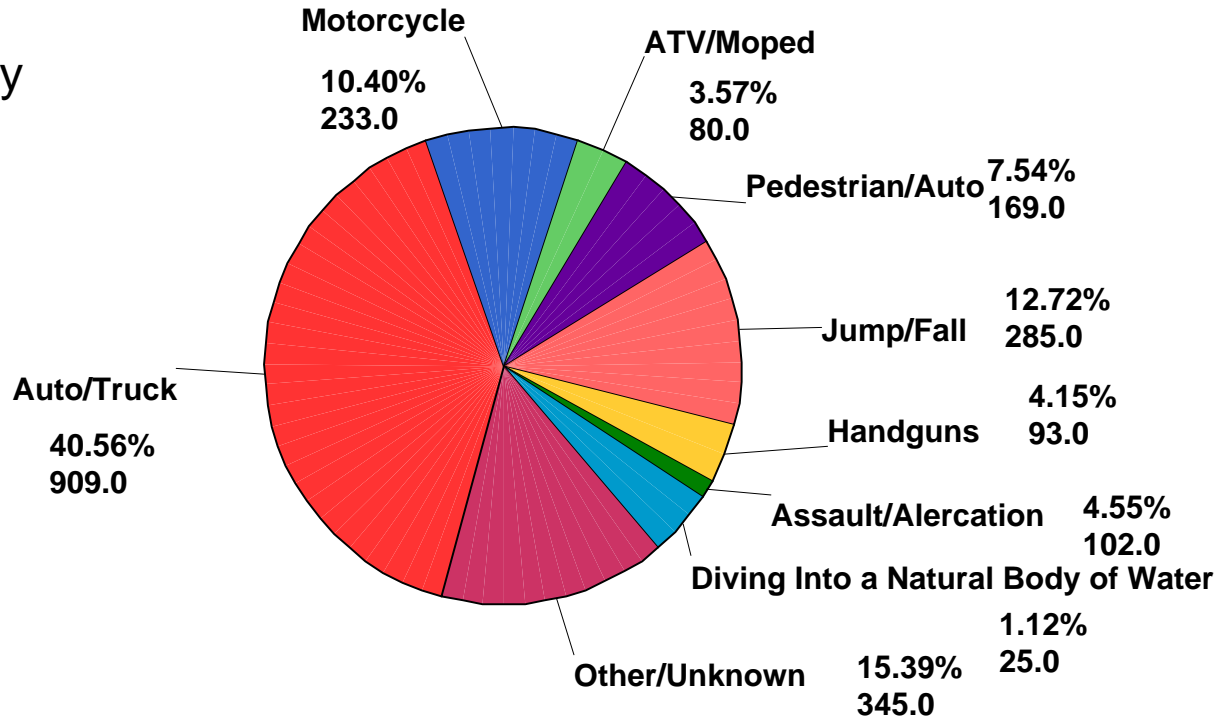
By Race/Ethnicity



	Brain		Spinal		Brain & Spinal		Table Total	
	Count	Col %	Count	Col %	Count	Col %	Count	Col %
White	954	64.6%	414	64.0%	68	58.1%	1436	64.1%
Black	245	16.6%	154	23.8%	18	15.4%	417	18.6%
Hispanic	251	17.0%	55	8.5%	26	22.2%	332	14.8%
Other/Unknown	27	1.8%	24	3.7%	5	4.3%	56	2.5%
Table Total	1477	100.0%	647	100.0%	117	100.0%	2241	100.0%

* Includes both open and closed cases that received services during the year.

Cause of Injury



	Brain		Spinal		Brain & Spinal		Table Total	
	Count	Col %	Count	Col %	Count	Col %	Count	Col %
Auto/Truck	616	41.7%	238	36.8%	55	47.0%	909	40.6%
Motorcycle	175	11.8%	44	6.8%	14	12.0%	233	10.4%
ATV/Moped	58	3.9%	20	3.1%	2	1.7%	80	3.6%
Pedestrian/Auto	151	10.2%	8	1.2%	10	8.5%	169	7.5%
Jump/Fall	144	9.7%	124	19.2%	17	14.5%	285	12.7%
Handguns	31	2.1%	61	9.4%	1	.9%	93	4.1%
Assault/Altercation	4	.3%	20	3.1%	1	.9%	25	1.1%
Diving Into a Natural Body of Water	94	6.4%	8	1.2%			102	4.6%
Other/Unknown	204	13.8%	124	19.2%	17	14.5%	345	15.4%
Table Total	1477	100.0%	647	100.0%	117	100.0%	2241	100.0%

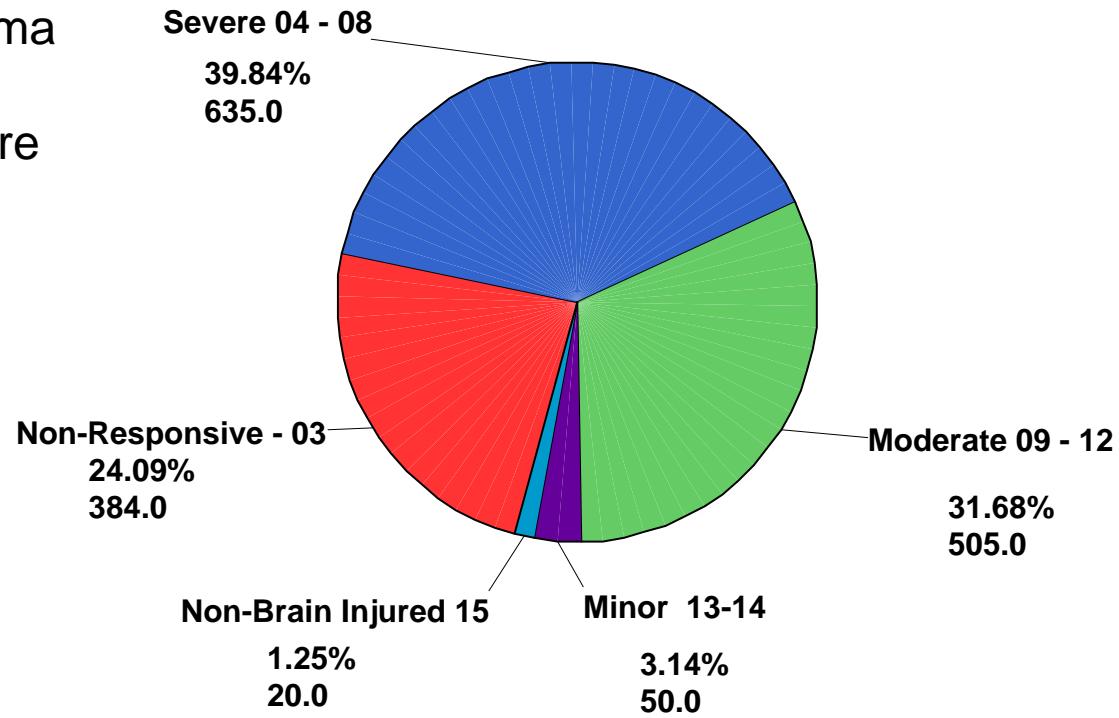
* Includes both open and closed cases that received services during the year.

Eligible Clients Served

Cause of Injury By Major Cause Categories		Brain		Spinal		Brain & Spinal		Table Total	
		Count	Col %	Count	Col %	Count	Col %	Count	Col %
Traffic-Related	Auto/Truck	616	41.7%	238	36.8%	55	47.0%	909	40.6%
	Motorcycle	175	11.8%	44	6.8%	14	12.0%	233	10.4%
	ATV/Moped/Dirt-bike	58	3.9%	20	3.1%	2	1.7%	80	3.6%
	Bicycle/Auto	39	2.6%	4	.6%	4	3.4%	47	2.1%
	Bicycle/Non Auto	6	.4%	7	1.1%			13	.6%
	Unknown Vehicle	1	.1%					1	.0%
	Pedestrian/Auto	151	10.2%	8	1.2%	10	8.5%	169	7.5%
	Pedestrian/Bike	1	.1%					1	.0%
	Pedestrian/Unknown	6	.4%			1	.9%	7	.3%
	Airplane/Train Crash	1	.1%	2	.3%			3	.1%
Falls	Fall From Auto/Truck	2	.1%	1	.2%			3	.1%
	Jump/Fall	144	9.7%	124	19.2%	17	14.5%	285	12.7%
Violence	Stabbing	1	.1%	3	.5%			4	.2%
	Handguns	31	2.1%	61	9.4%	1	.9%	93	4.1%
	Other Gun	1	.1%	2	.3%			3	.1%
	Rifle	3	.2%	2	.3%			5	.2%
	Assault/Altercation	94	6.4%	8	1.2%			102	4.6%
	Shaken Baby	3	.2%					3	.1%
Sports/Recreation	Domestic Violence	3	.2%	1	.2%			4	.2%
	Boating/Jet Ski	2	.1%			1	.9%	3	.1%
	Swimming			3	.5%	1	.9%	4	.2%
	Diving into a pool			3	.5%			3	.1%
	Diving into a natural body of water	4	.3%	20	3.1%	1	.9%	25	1.1%
	Football/Soccer/Hockey	1	.1%			2	1.7%	3	.1%
	Skating/Skateboard/Scooter	1	.1%					1	.0%
	Recreational Sport	1	.1%	2	.3%			3	.1%
Other	Other Sport	4	.3%	7	1.1%			11	.5%
	Heavy Equipment	2	.1%	6	.9%			8	.4%
	Falling Object	14	.9%	6	.9%			20	.9%
	Medical Complication	1	.1%	6	.9%	1	.9%	8	.4%
	Other	33	2.2%	23	3.6%	4	3.4%	60	2.7%
	Unknown	78	5.3%	46	7.1%	3	2.6%	127	5.7%
Table Total		1477	100.0%	647	100.0%	117	100.0%	2241	100.0%

Note: Red highlights indicate leading cause of injury categories for SFY 2004 – 2005.

Glasgow Coma Brain Injury Severity Score

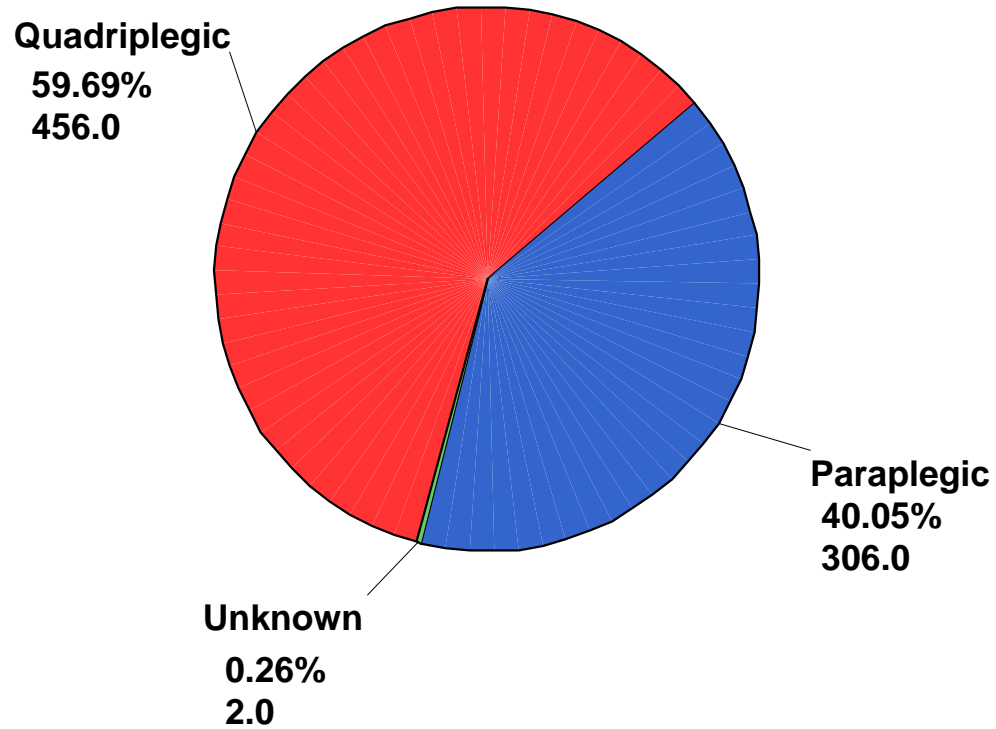


	Brain		Brain & Spinal		Table Total	
	Count	Col %	Count	Col %	Count	Col %
Non-Responsive - 03	357	24.2%	27	23.1%	384	24.1%
Severe 04 - 08	594	40.2%	41	35.0%	635	39.8%
Moderate 09 - 12	475	32.2%	30	25.6%	505	31.7%
Minor 13-14	41	2.8%	9	7.7%	50	3.1%
Non-Brain Injured 15	10	.7%	10	8.5%	20	1.3%
Table Total	1477	100.0%	117	100.0%	1594	100.0%

* Includes both open and closed cases that received services during the year.

Eligible Clients Served

Level of
Spinal
Cord Injury



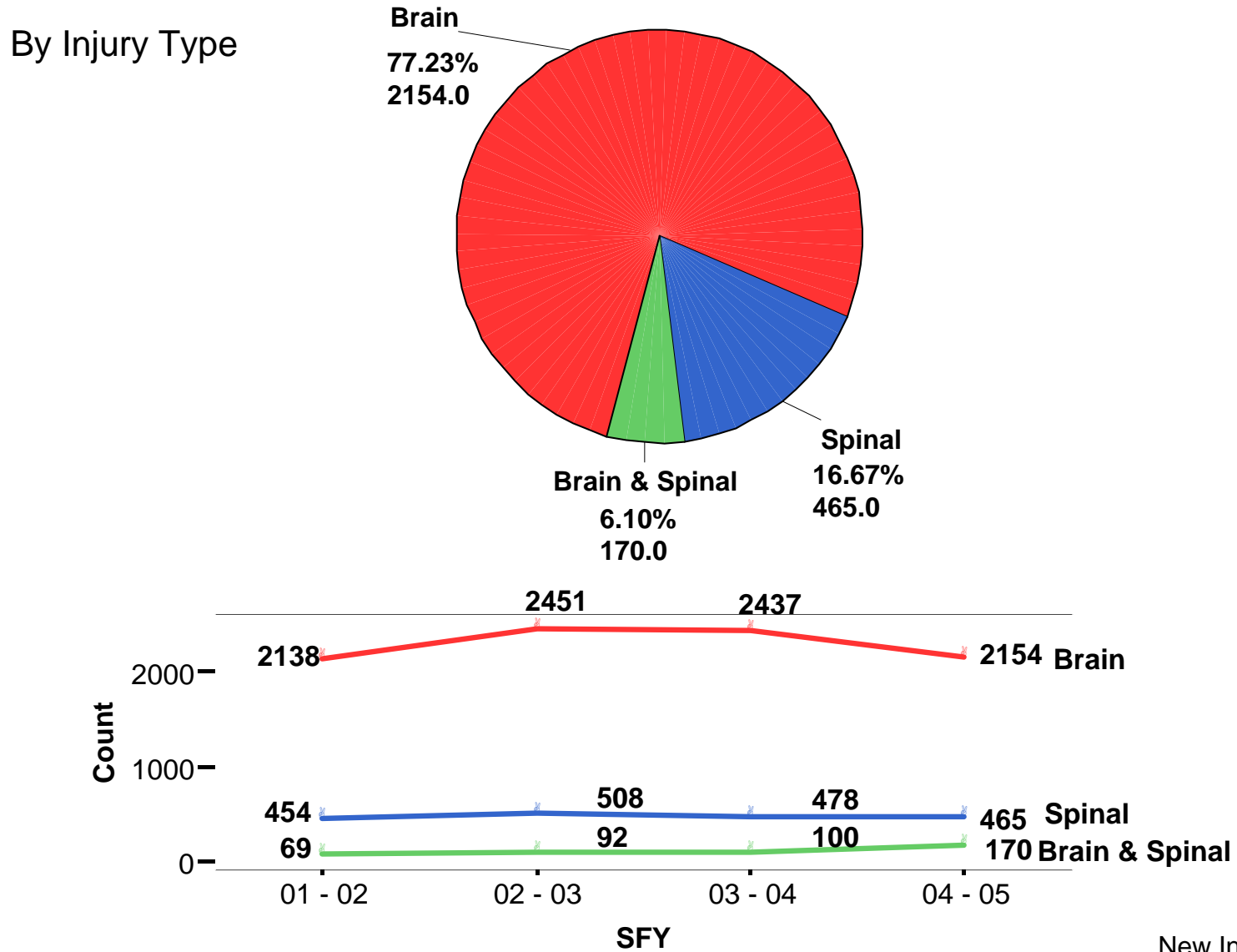
	Spinal		Brain & Spinal		Table Total	
	Count	Col %	Count	Col %	Count	Col %
Quadriplegic	378	58.4%	78	66.7%	456	59.7%
Paraplegic	268	41.4%	38	32.5%	306	40.1%
Unknown	1	.2%	1	.9%	2	.3%
Table Total	647	100.0%	117	100.0%	764	100.0%

* Includes both open and closed cases that received services during the year.

New Injuries Reported to the Central Registry
SFY 2004 – 2005

For Moderate-to-Severe
Brain and Spinal Cord Injuries

Total Number of New Injuries Reported = 2789
SFY 2004 - 2005



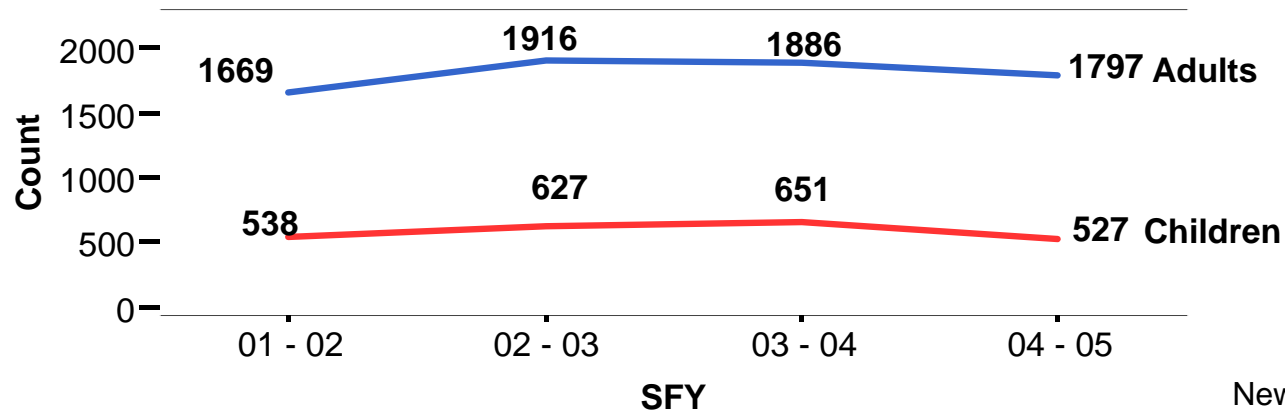
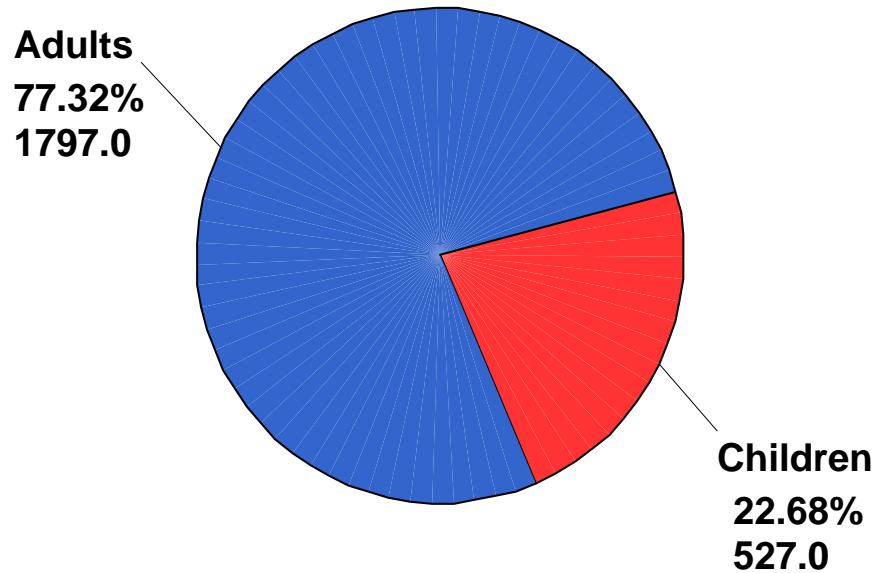
New Injuries

			SFY			
			01 - 02	02 - 03	03 - 04	04 - 05
Injury Type	Brain	Count	2138	2451	2437	2154
		Col %	80.3%	80.3%	80.8%	77.2%
	Spinal	Count	454	508	478	465
		Col %	17.1%	16.7%	15.9%	16.7%
	Brain & Spinal	Count	69	92	100	170
		Col %	2.6%	3.0%	3.3%	6.1%
Table		Count	2661	3051	3015	2789
Total		Col %	100.0%	100.0%	100.0%	100.0%

New Traumatic Brain Injuries Reported
SFY 2004 - 2005

Total Number of New Brain Injuries Reported = 2324 SFY 2004 - 2005

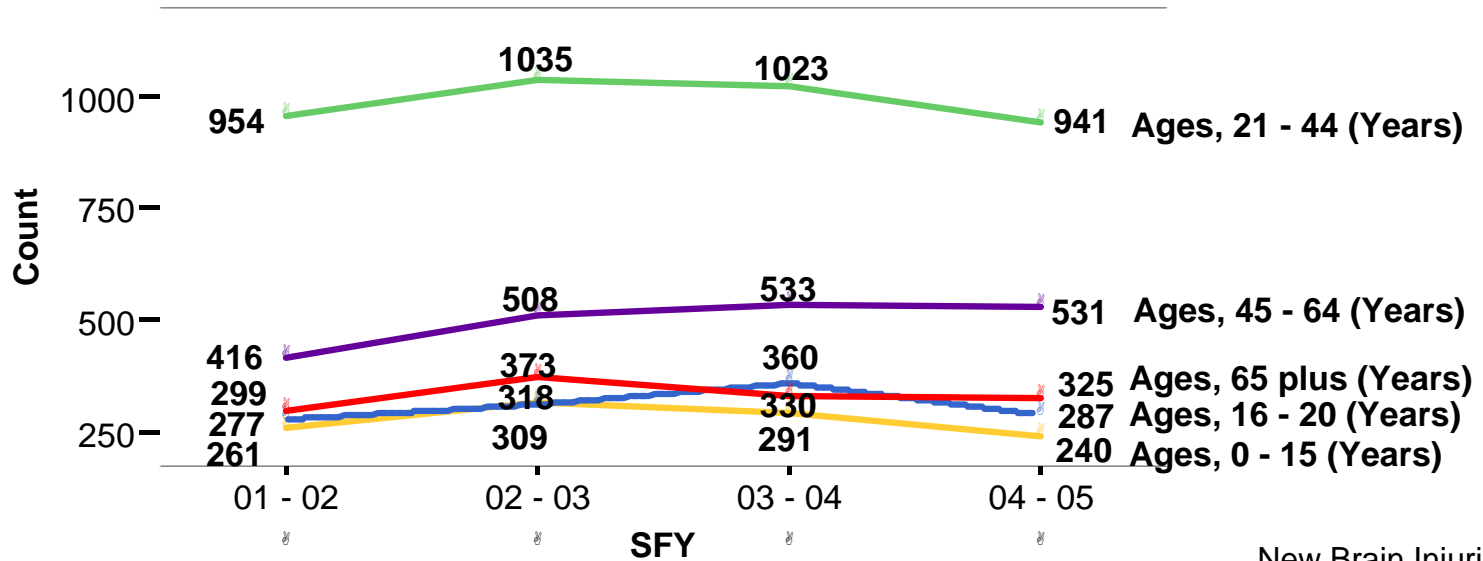
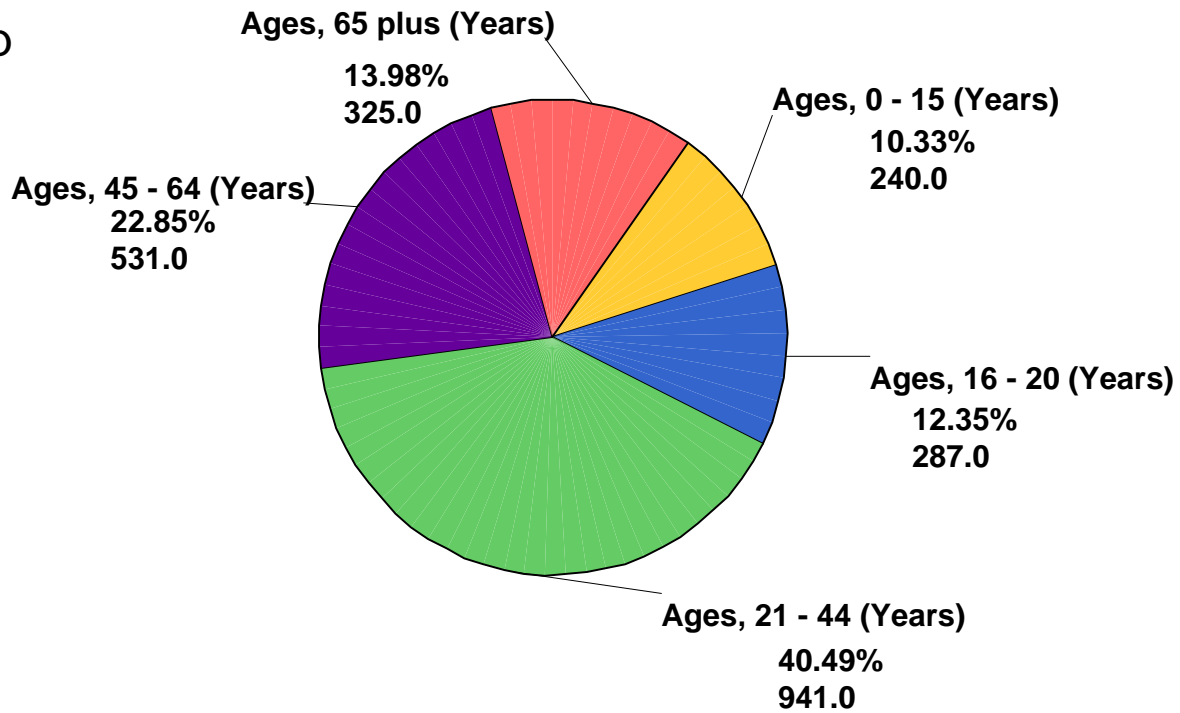
By Age Category
For Adults (Ages 21 Plus) and Children (Ages 0- 20)



New Brain Injuries

			SFY			
			01 - 02	02 - 03	03 - 04	04 - 05
Age Category	Children	Count	538	627	651	527
		Col %	24.4%	24.7%	25.7%	22.7%
	Adults	Count	1669	1916	1886	1797
		Col %	75.6%	75.3%	74.3%	77.3%
Table		Count	2207	2543	2537	2324
Total		Col %	100.0%	100.0%	100.0%	100.0%

By Age Group

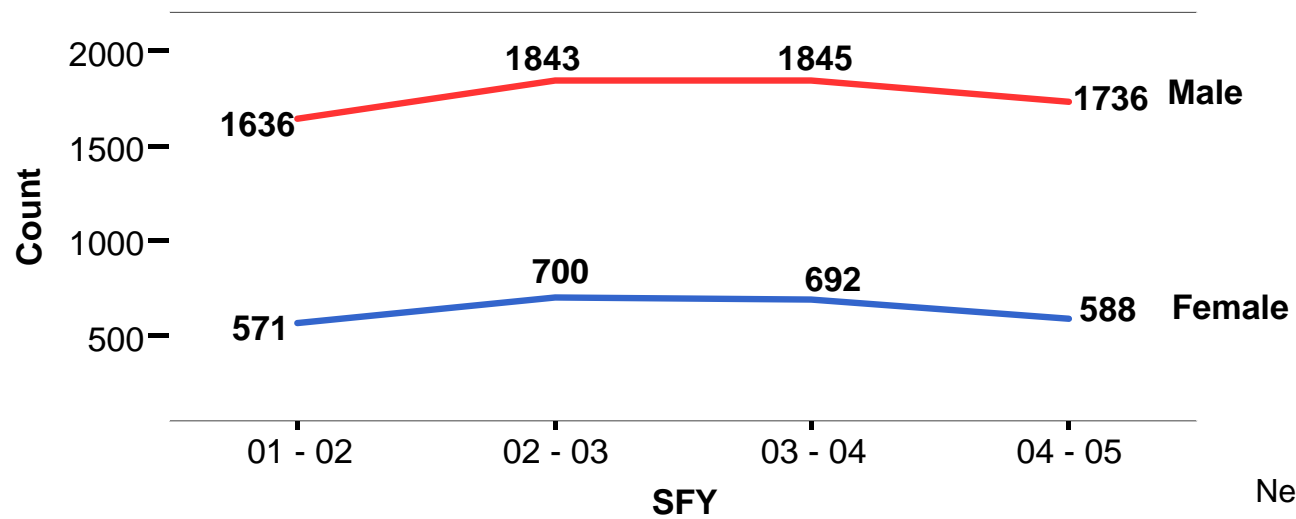
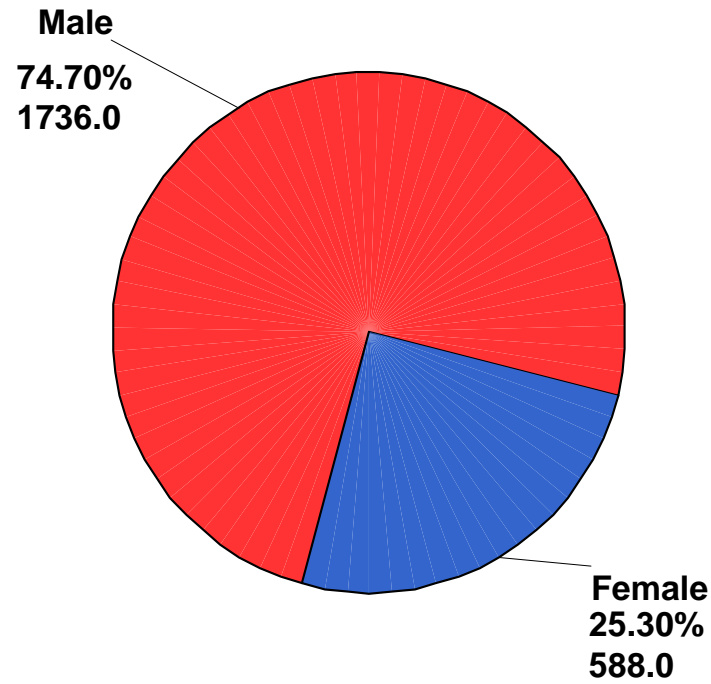


New Brain Injuries

	SFY							
	01 - 02		02 - 03		03 - 04		04 - 05	
	Count	Col %	Count	Col %	Count	Col %	Count	Col %
Ages, 0 - 15 (Years)	261	11.8%	318	12.5%	291	11.5%	240	10.3%
Ages, 16 - 20 (Years)	277	12.6%	309	12.2%	360	14.2%	287	12.3%
Ages, 21 - 44 (Years)	954	43.2%	1035	40.7%	1023	40.3%	941	40.5%
Ages, 45 - 64 (Years)	416	18.8%	508	20.0%	533	21.0%	531	22.8%
Ages, 65 plus (Years)	299	13.5%	373	14.7%	330	13.0%	325	14.0%
Table Total	2207	100%	2543	100%	2537	100%	2324	100%

* Counts include new injuries reported from all referral sources.

By Gender

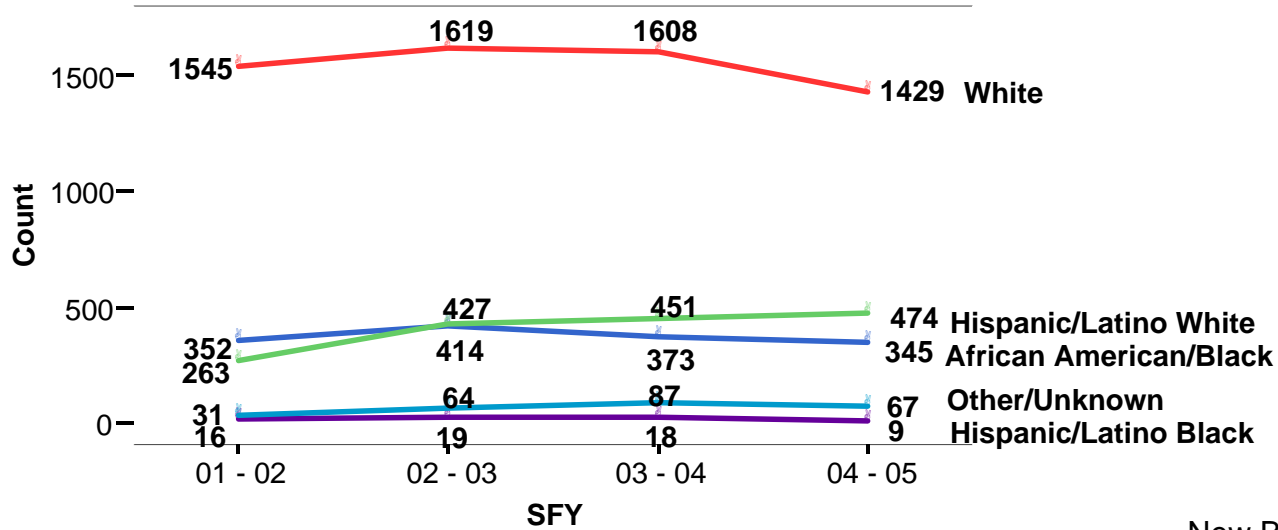
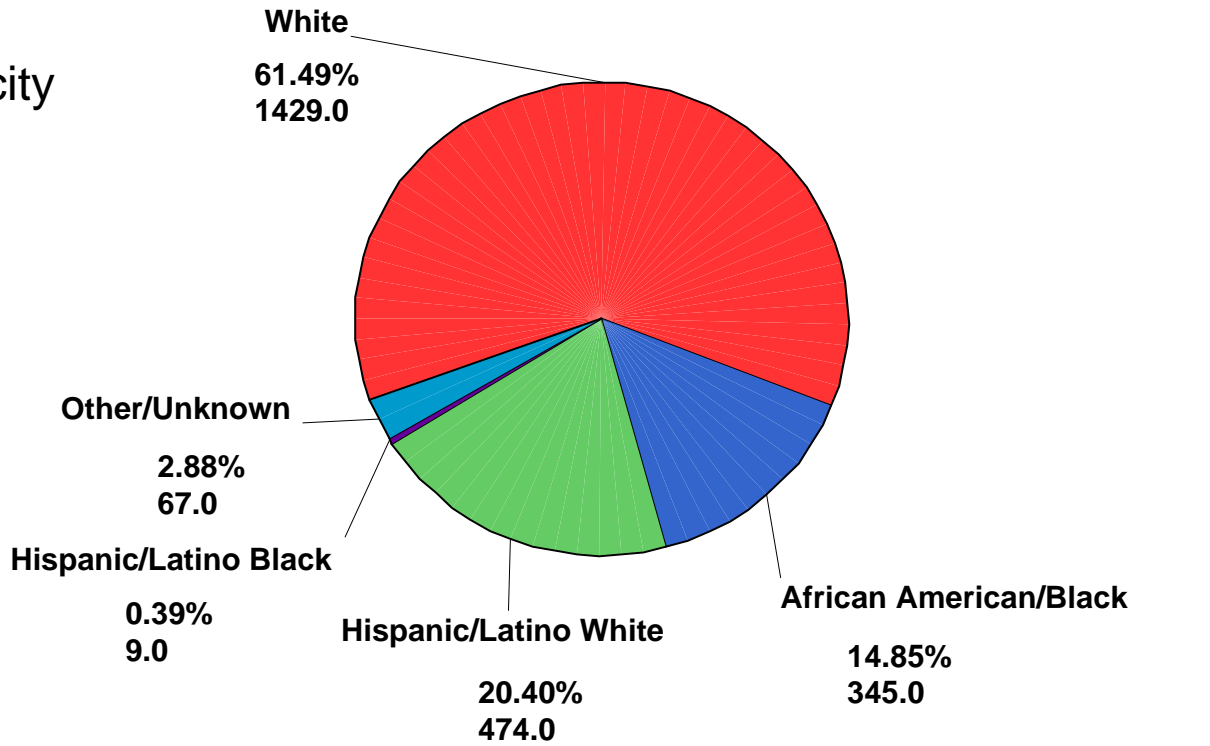


New Brain Injuries

		SFY							
		01 - 02		02 - 03		03 - 04		04 - 05	
		Count	Col %	Count	Col %	Count	Col %	Count	Col %
Gender	Male	1636	74.1%	1843	72.5%	1845	72.7%	1736	74.7%
	Female	571	25.9%	700	27.5%	692	27.3%	588	25.3%
Table Total		2207	100%	2543	100%	2537	100%	2324	100%

* Counts include new injuries reported from all referral sources.

By Race/Ethnicity

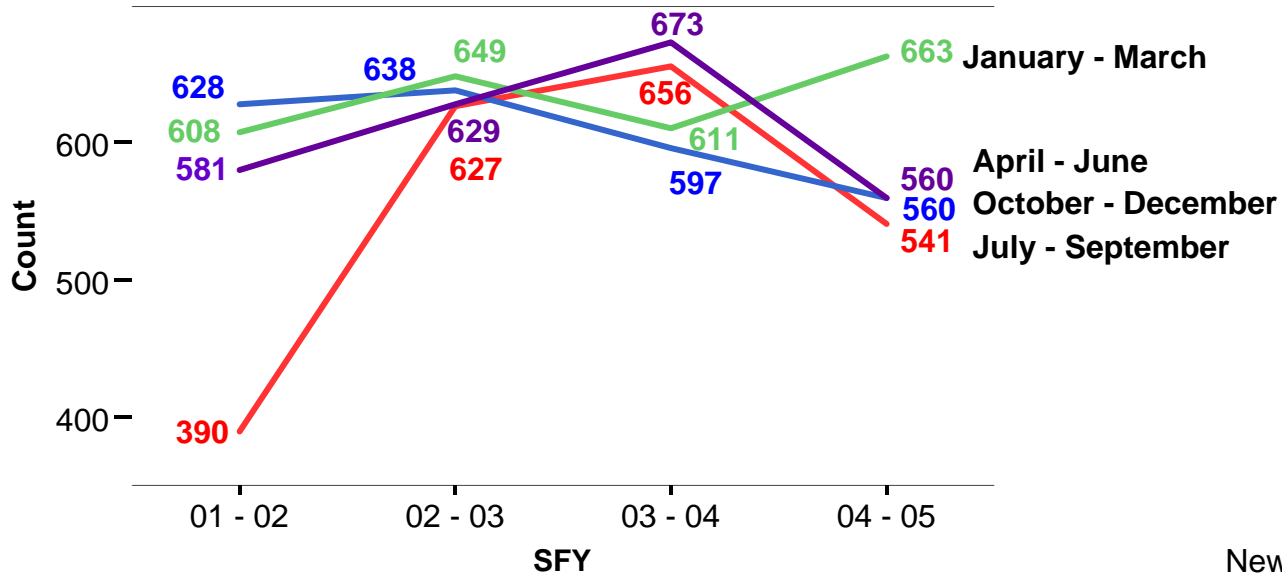
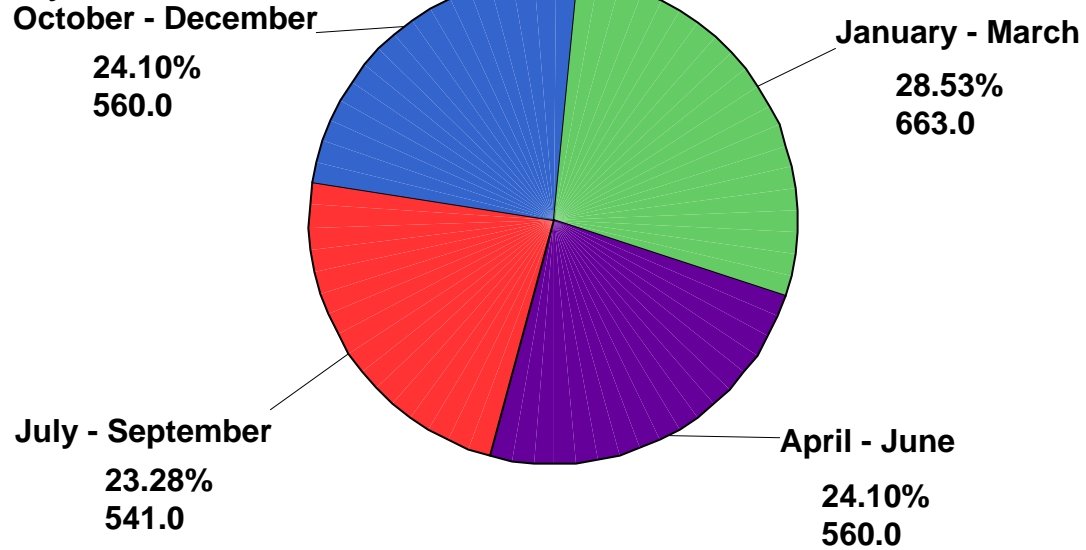


New Brain Injuries

	SFY							
	01 - 02		02 - 03		03 - 04		04 - 05	
	Count	Col %	Count	Col %	Count	Col %	Count	Col %
Race/Ethnicity White	1545	70.0%	1619	63.7%	1608	63.4%	1429	61.5%
African American/Black	352	15.9%	414	16.3%	373	14.7%	345	14.8%
Hispanic/Latino White	263	11.9%	427	16.8%	451	17.8%	474	20.4%
Hispanic/Latino Black	16	.7%	19	.7%	18	.7%	9	.4%
Other/Unknown	31	1.4%	64	2.5%	87	3.4%	67	2.9%
Table Total	2207	100.0%	2543	100.0%	2537	100.0%	2324	100.0%

* Counts include new injuries reported from all referral sources.

By Quarter of Injury Occurrence

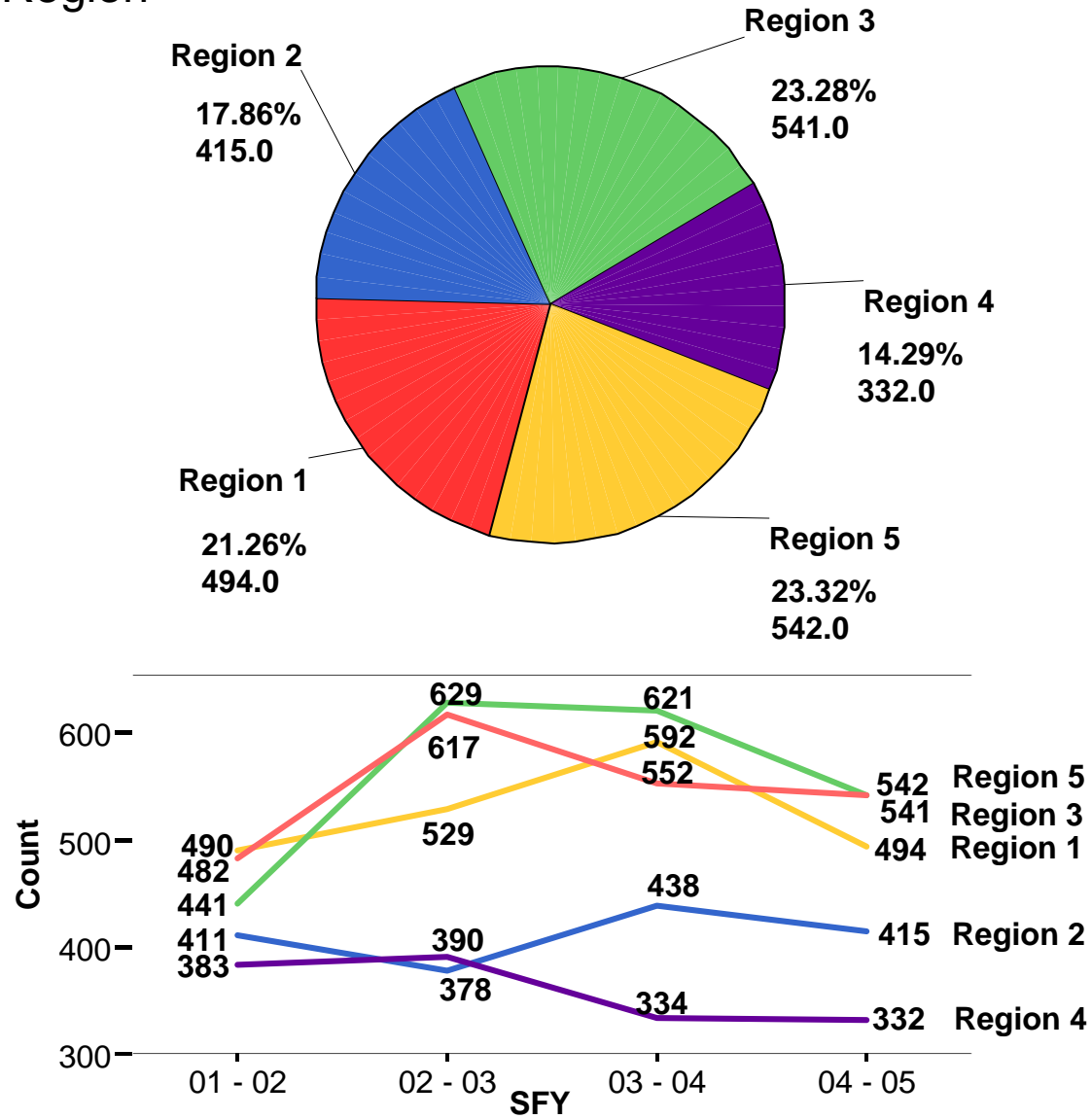


New Brain Injuries

			SFY							
			01 - 02		02 - 03		03 - 04		04 - 05	
			Count	Col %	Count	Col %	Count	Col %	Count	Col %
July - September	Injury Month	July	119	5.4%	188	7.4%	217	8.6%	201	8.6%
		August	125	5.7%	210	8.3%	229	9.0%	172	7.4%
		September	146	6.6%	229	9.0%	210	8.3%	168	7.2%
	Group Total	390	17.7%	627	24.7%	656	25.9%	541	23.3%	
October - December	Injury Month	October	216	9.8%	218	8.6%	201	7.9%	183	7.9%
		November	191	8.7%	216	8.5%	192	7.6%	187	8.0%
		December	221	10.0%	204	8.0%	204	8.0%	190	8.2%
	Group Total	628	28.5%	638	25.1%	597	23.5%	560	24.1%	
January - March	Injury Month	January	190	8.6%	209	8.2%	194	7.6%	234	10.1%
		February	185	8.4%	202	7.9%	176	6.9%	210	9.0%
		March	233	10.6%	238	9.4%	241	9.5%	219	9.4%
	Group Total	608	27.5%	649	25.5%	611	24.1%	663	28.5%	
April - June	Injury Month	April	195	8.8%	230	9.0%	218	8.6%	179	7.7%
		May	182	8.2%	193	7.6%	217	8.6%	205	8.8%
		June	204	9.2%	206	8.1%	238	9.4%	176	7.6%
	Group Total	581	26.3%	629	24.7%	673	26.5%	560	24.1%	
Table Total			2207	100.0%	2543	100.0%	2537	100.0%	2324	100.0%

New Brain Injuries

By Referring Region



New Brain Injuries

		SFY							
		01 - 02		02 - 03		03 - 04		04 - 05	
		Count	Col%	Count	Col%	Count	Col%	Count	Col%
BSCIP	Region 1	490	22.2%	529	20.8%	592	23.3%	494	21.3%
Referral	Region 2	411	18.6%	378	14.9%	438	17.3%	415	17.9%
Region	Region 3	441	20.0%	629	24.7%	621	24.5%	541	23.3%
	Region 4	383	17.4%	390	15.3%	334	13.2%	332	14.3%
	Region 5	482	21.8%	617	24.3%	552	21.8%	542	23.3%
Table Total		2207	100%	2543	100%	2537	100%	2324	100%

* Counts include new injuries reported from all referral sources.

Note: When interpreting data across years, it is important to consider what question you are trying to answer. Clients counts may increase at the same time that the percentage within a category decreases.

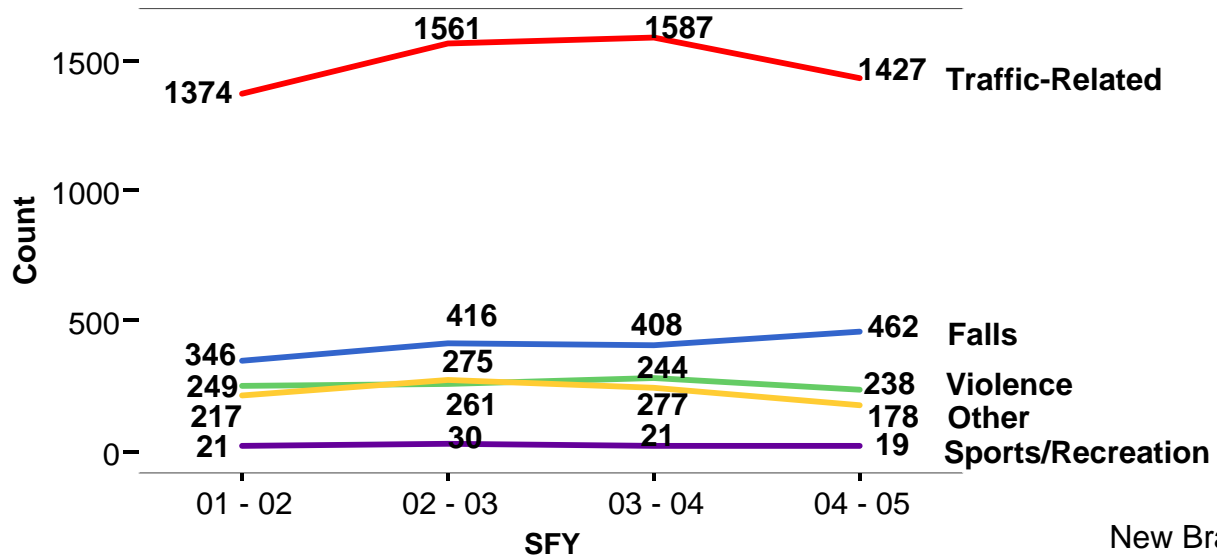
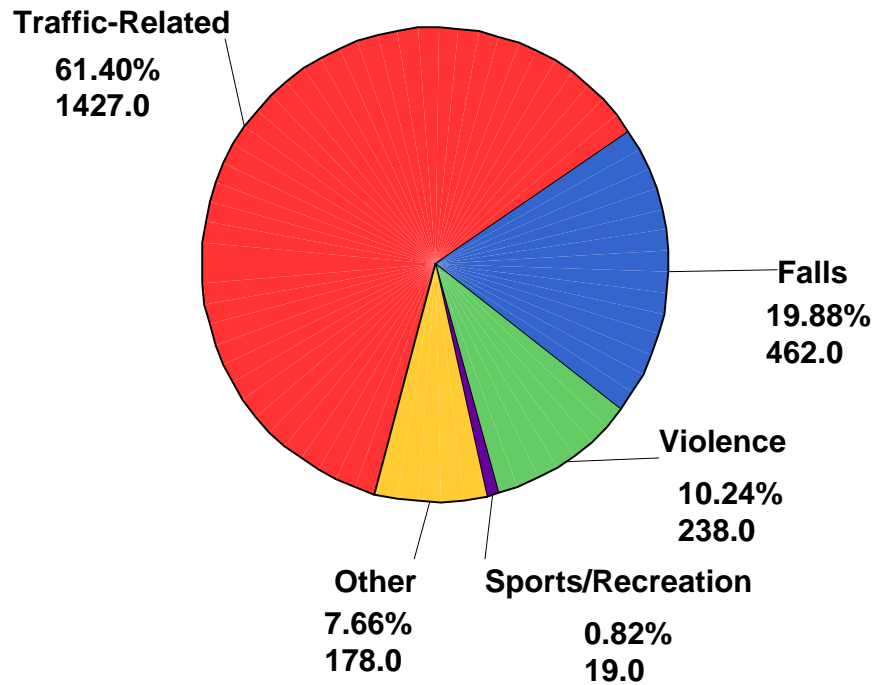
Example: The number of served clients in Region 5 decreased in 2004 - 2005 when compared to 2003- 2004 figures, yet the percentage of clients served increased.

There can be a big difference between the having category with the largest number of clients served and the largest percent of clients served.

Keep this in mind when you are trying to determine growth over time!!

New Brain Injuries

Major Causes of Injury

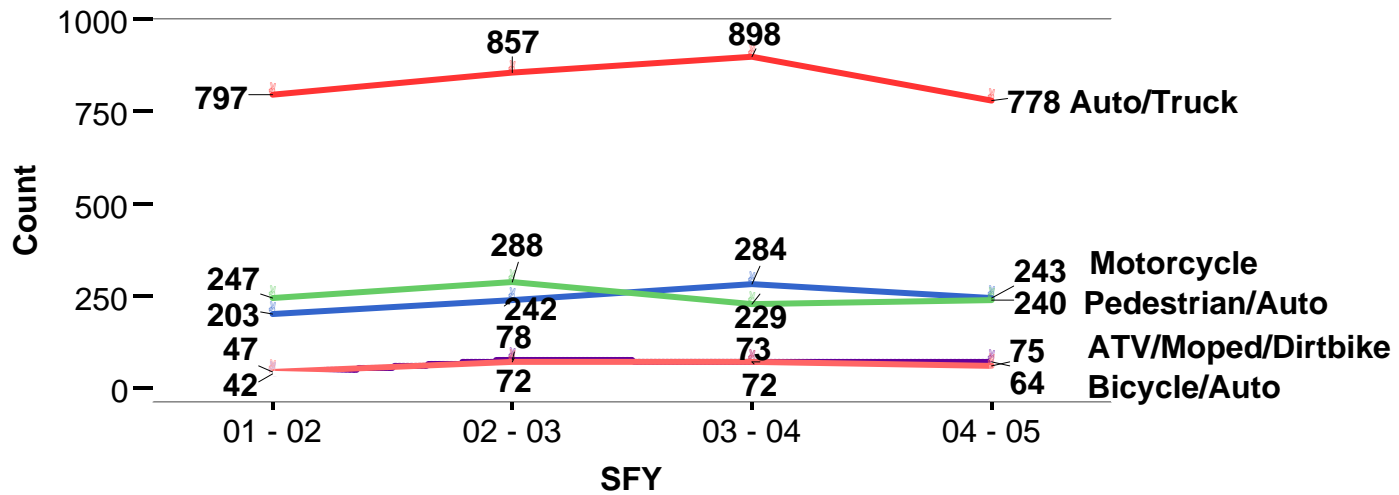
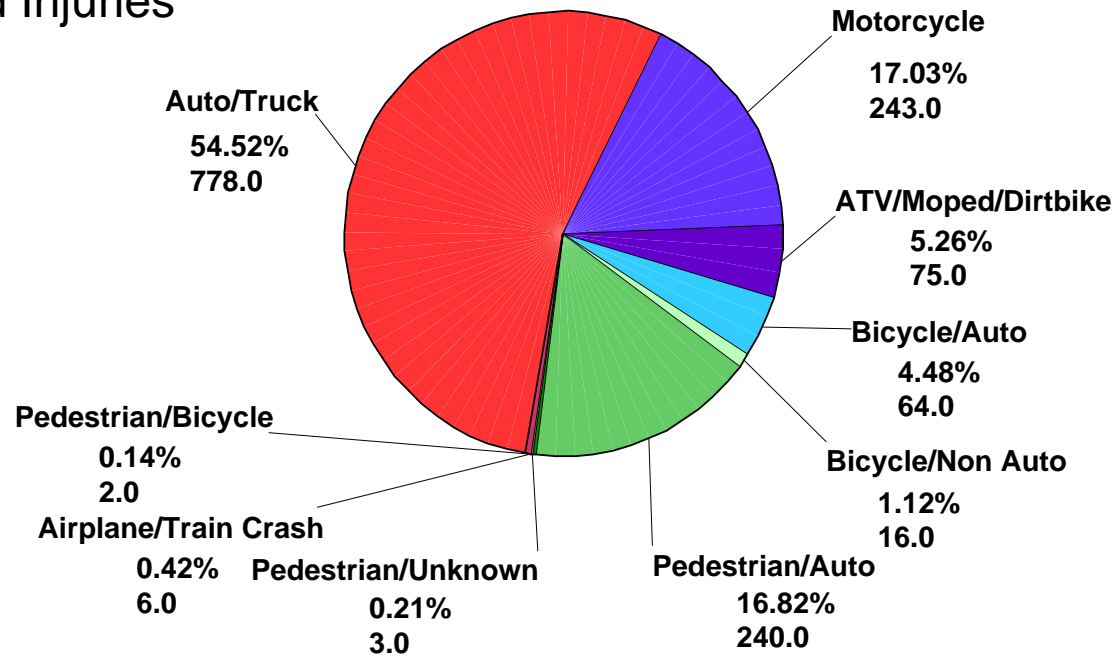


New Brain Injuries

				SFY							
				01 - 02		02 - 03		03 - 04		04 - 05	
				Count	Cal %	Count	Cal %	Count	Cal %	Count	Cal %
Major Cause of Injury Categories	Traffic-Related Cause	Auto/Truck	797	36.1%	857	33.7%	898	35.4%	778	33.5%	
		Motorcycle	203	9.2%	242	9.5%	284	11.2%	243	10.5%	
		ATV/Moped/Dirtbike	42	1.9%	78	3.1%	73	2.9%	75	3.2%	
		Bicycle/Auto	47	2.1%	72	2.8%	72	2.8%	64	2.8%	
		Bicycle/Non Auto	19	.9%	19	.7%	19	.7%	16	.7%	
		Pedestrian/Auto	247	11.2%	288	11.3%	229	9.0%	240	10.3%	
		Pedestrian/Bicycle			2	.1%	3	.1%	3	.1%	
		Pedestrian/Unknown	4	.2%	3	.1%	6	.2%	2	.1%	
		Unknown Vehicle	12	.5%							
		Airplane/Train Crash	3	.1%			3	.1%	6	.3%	
		Group Total	1374	62.3%	1561	61.4%	1587	62.6%	1427	61.4%	
	Falls Cause	Jump/Fall	343	15.5%	412	16.2%	406	16.0%	458	19.7%	
		Fall from Auto/Truck	3	.1%	4	.2%	2	.1%	4	.2%	
		Group Total	346	15.7%	416	16.4%	408	16.1%	462	19.9%	
	Violence Cause	Assault/Altercation	133	6.0%	161	6.3%	152	6.0%	174	7.5%	
		Assault/Machine Gun	3	.1%							
		Handgun	49	2.2%	93	3.7%	110	4.3%	51	2.2%	
		Rifle	10	.5%	1	.0%	7	.3%	1	.0%	
		Other Gun	49	2.2%							
		Stabbing	4	.2%	1	.0%	1	.0%	3	.1%	
		Domestic Violence			1	.0%	4	.2%	7	.3%	
		Shaken Baby	1	.0%	4	.2%	3	.1%	2	.1%	
		Group Total	249	11.3%	261	10.3%	277	10.9%	238	10.2%	
	Sports/Recreation Cause	Boating/Jet Ski	1	.0%	1	.0%	5	.2%	2	.1%	
		Diving into a pool							1	.0%	
		Diving into a natural body of water	5	.2%	9	.4%	9	.4%	4	.2%	
		Swimming	1	.0%	3	.1%	1	.0%			
		Recreational Sport	8	.4%							
		Football/Soccer/Hockey							4	.2%	
Skating/Skateboard/Scooter		1	.0%	2	.1%	2	.1%	1	.0%		
Other Sport		5	.2%	15	.6%	4	.2%	7	.3%		
	Group Total	21	1.0%	30	1.2%	21	.8%	19	.8%		
Other Cause	Falling Object	16	.7%	12	.5%	16	.6%	21	.9%		
	Heavy Equipment	1	.0%	5	.2%	5	.2%	5	.2%		
	Medical Complication	2	.1%	4	.2%	1	.0%	4	.2%		
	Other	71	3.2%	103	4.1%	74	2.9%	62	2.7%		
	Unknown	127	5.8%	151	5.9%	148	5.8%	86	3.7%		
	Group Total	217	9.8%	275	10.8%	244	9.6%	178	7.7%		
Table Total			2207	100%	2543	100%	2537	100%	2324	100%	

* Counts include new injuries reported from all referral sources.

Traffic-Related Injuries

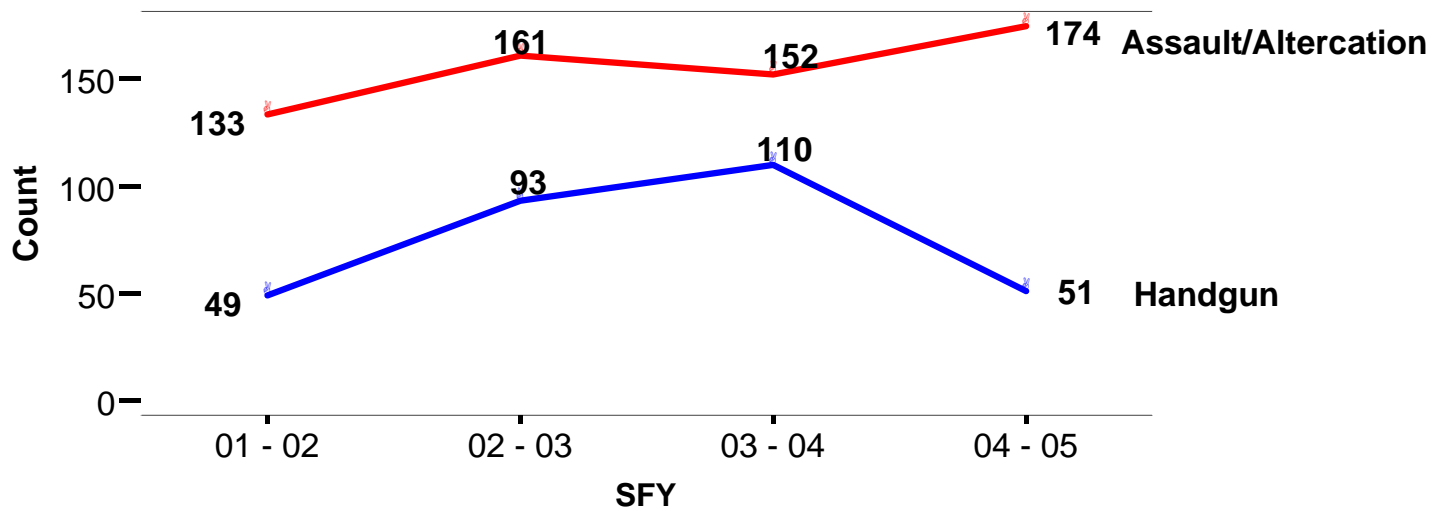
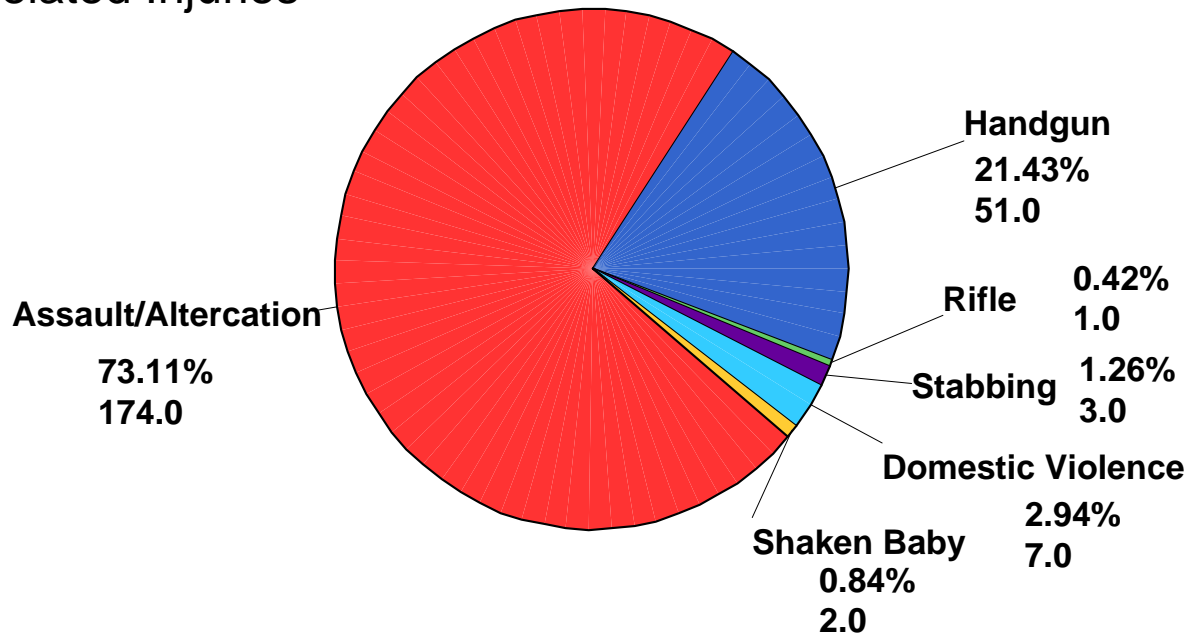


New Brain Injuries

Cause of Injury	SFY							
	01 - 02		02 - 03		03 - 04		04 - 05	
	Count	Col %	Count	Col %	Count	Col %	Count	Col %
Auto/Truck	797	58.0%	857	54.9%	898	56.6%	778	54.5%
Motorcycle	203	14.8%	242	15.5%	284	17.9%	243	17.0%
ATV/Moped/Dirtbike	42	3.1%	78	5.0%	73	4.6%	75	5.3%
Bicycle/Auto	47	3.4%	72	4.6%	72	4.5%	64	4.5%
Bicycle/Non Auto	19	1.4%	19	1.2%	19	1.2%	16	1.1%
Unknown Vehicle	12	.9%						
Pedestrian/Auto	247	18.0%	288	18.4%	229	14.4%	240	16.8%
Pedestrian/Bike			2	.1%	3	.2%	3	.2%
Pedestrian/Unknown	4	.3%	3	.2%	6	.4%	2	.1%
Airplane/Train Crash	3	.2%			3	.2%	6	.4%
Table Total	1374	100%	1561	100%	1587	100%	1427	100%

* Counts include new injuries reported from all referral sources.

Violence-Related Injuries

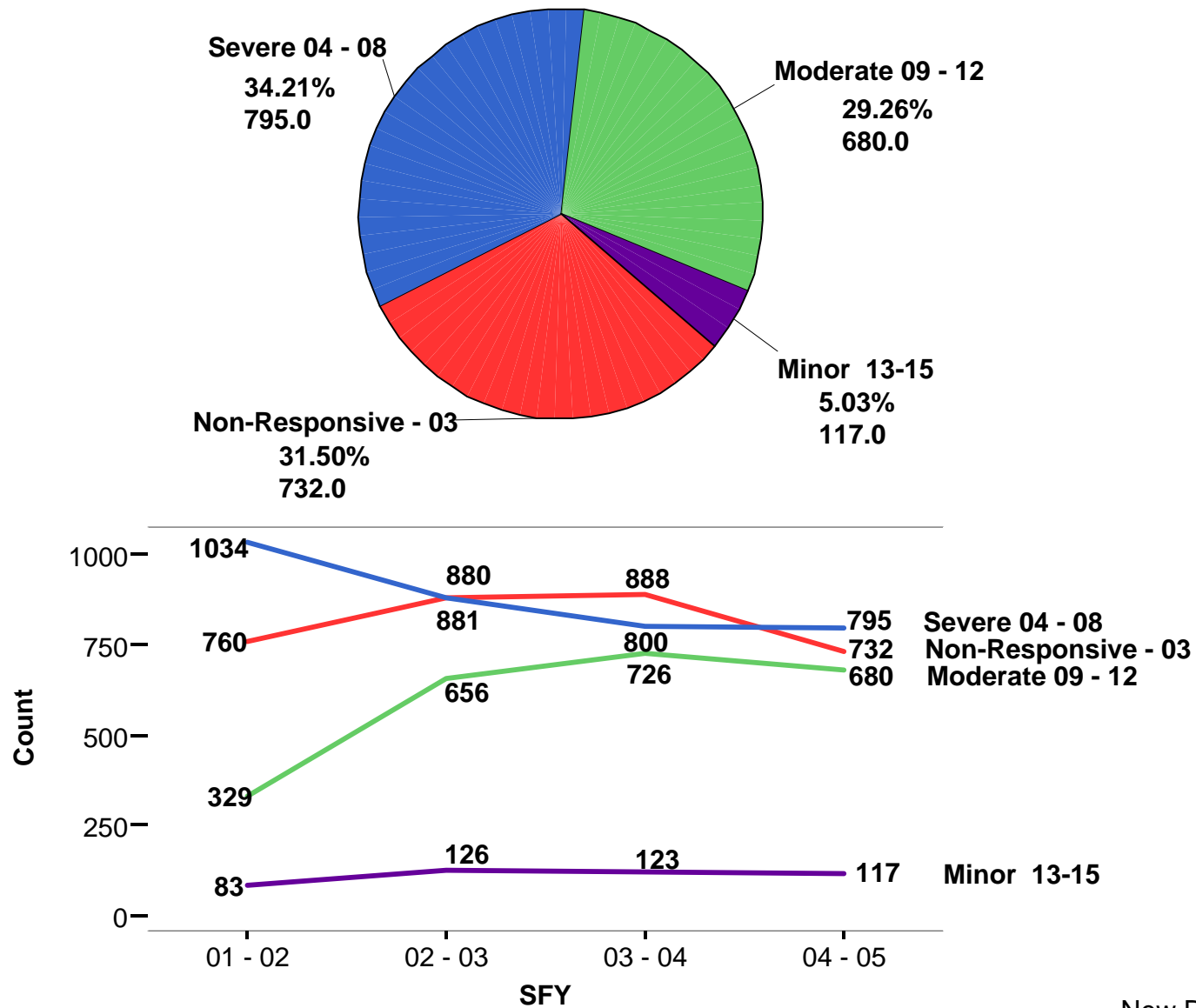


New Brain Injuries

		SFY							
		01 - 02		02 - 03		03 - 04		04 - 05	
		Count	Col %	Count	Col %	Count	Col %	Count	Col %
Cause of Injury	Stabbing	4	1.6%	1	.4%	1	.4%	3	1.3%
	Handguns	49	19.7%	93	35.6%	110	39.7%	51	21.4%
	Other Gun	49	19.7%						
	Machine Gun	3	1.2%						
	Rifle	10	4.0%	1	.4%	7	2.5%	1	.4%
	Assault/Altercation	133	53.4%	161	61.7%	152	54.9%	174	73.1%
	Shaken Baby	1	.4%	4	1.5%	3	1.1%	2	.8%
	Domestic Violence			1	.4%	4	1.4%	7	2.9%
Table Total		249	100.0%	261	100.0%	277	100.0%	238	100.0%

* Counts include new injuries reported from all referral sources.

Glasgow Coma Brain Injury Severity Score



New Brain Injuries

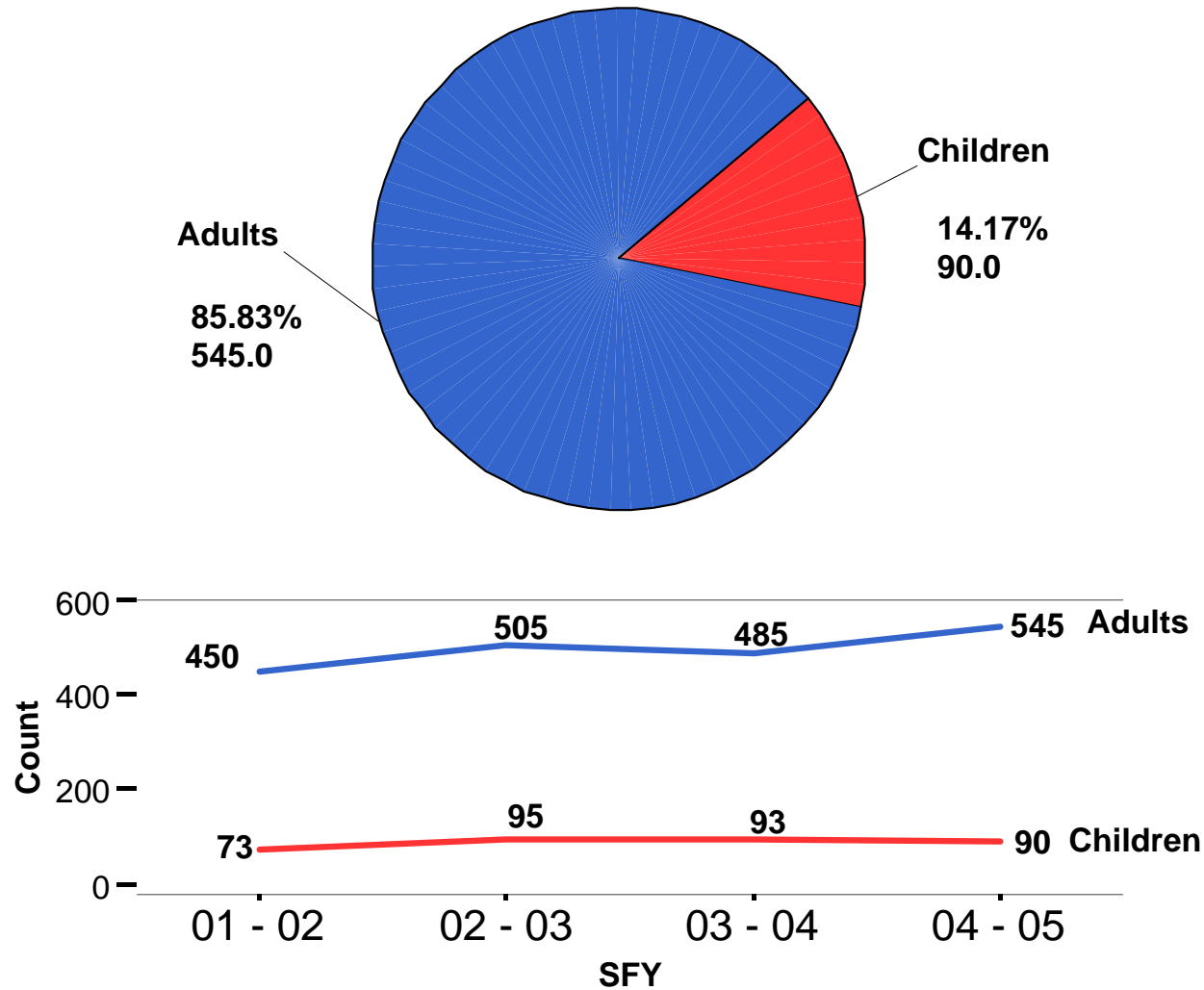
		SFY							
		01 - 02		02 - 03		03 - 04		04 - 05	
		Count	Col %	Count	Col %	Count	Col %	Count	Col %
Glasgow	Non-Responsive - 03	760	34.5%	880	34.6%	888	35.0%	732	31.5%
Coma	Severe 04 - 08	1034	46.9%	881	34.6%	800	31.5%	795	34.2%
Scores	Moderate 09 - 12	329	14.9%	656	25.8%	726	28.6%	680	29.3%
	Minor 13-15	83	3.8%	126	5.0%	123	4.8%	117	5.0%
Table Total		2207	100%	2543	100%	2537	100%	2324	100%

* Counts include new injuries reported from all referral sources.

New Spinal Cord Injuries
Reported to the Central Registry
SFY 2004 - 2005

Total Number of New Spinal Cord Injuries Reported = 635 SFY 2004 - 2005

By Age Category
For Adults (Ages 21 Plus) and Children (Ages 0- 20)

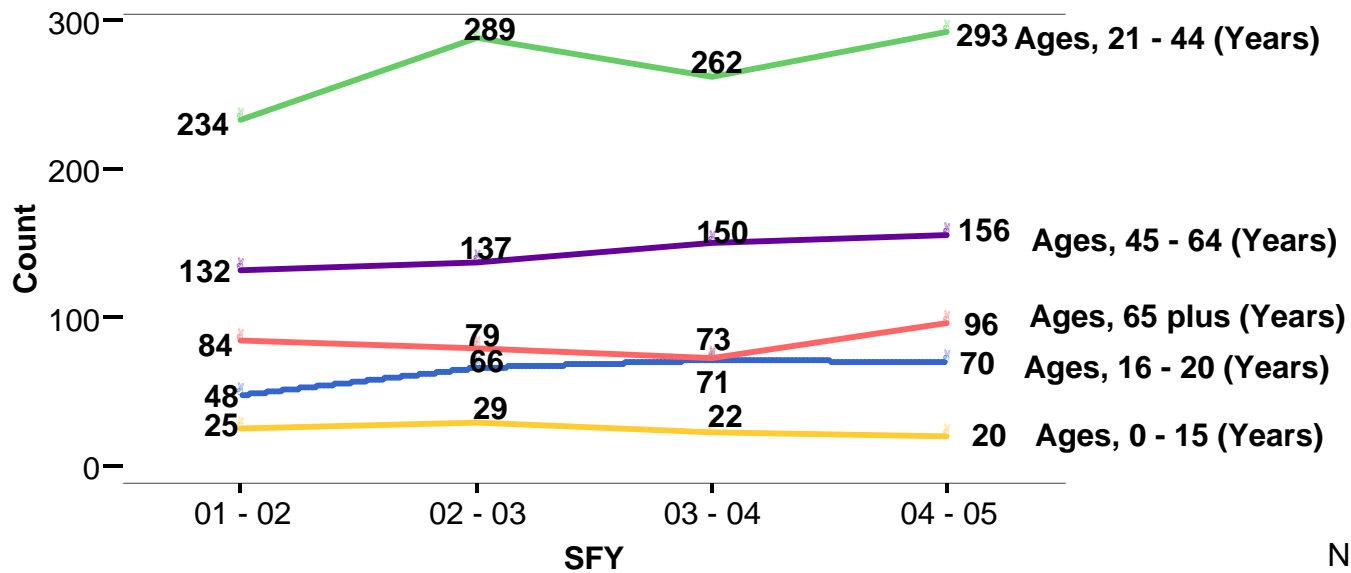
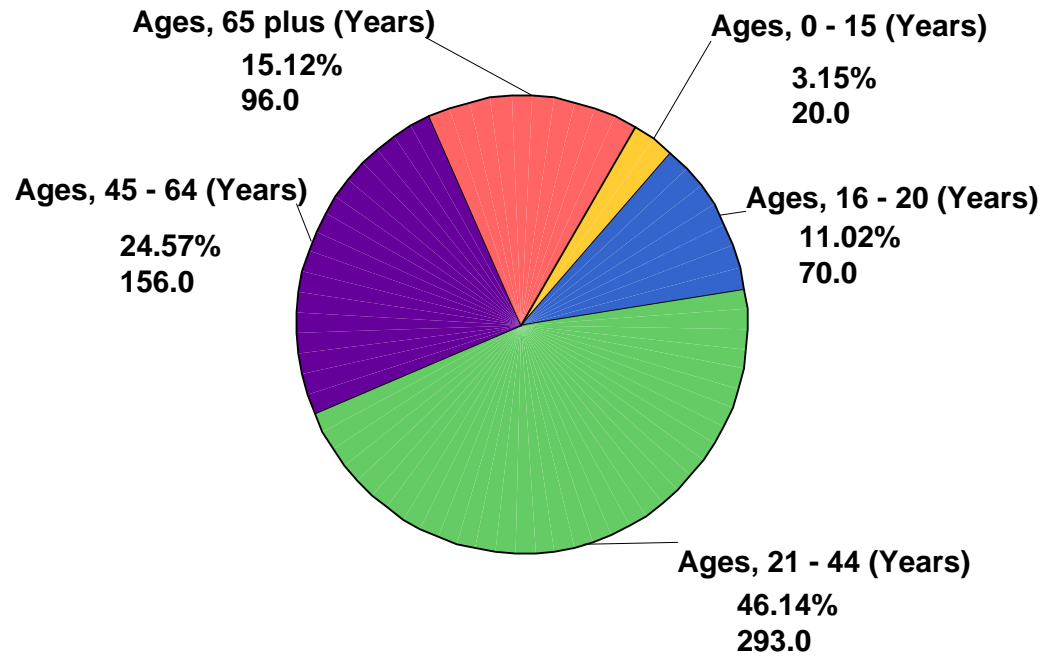


New Spinal Cord Injuries

			SFY			
			01 - 02	02 - 03	03 - 04	04 - 05
Age	Children	Count	73	95	93	90
Category		Col %	14.0%	15.8%	16.1%	14.2%
	Adults	Count	450	505	485	545
		Col %	86.0%	84.2%	83.9%	85.8%
Table		Count	523	600	578	635
Total		Col %	100.0%	100.0%	100.0%	100.0%

* Counts include new injuries reported from all referral sources.

By Age Group

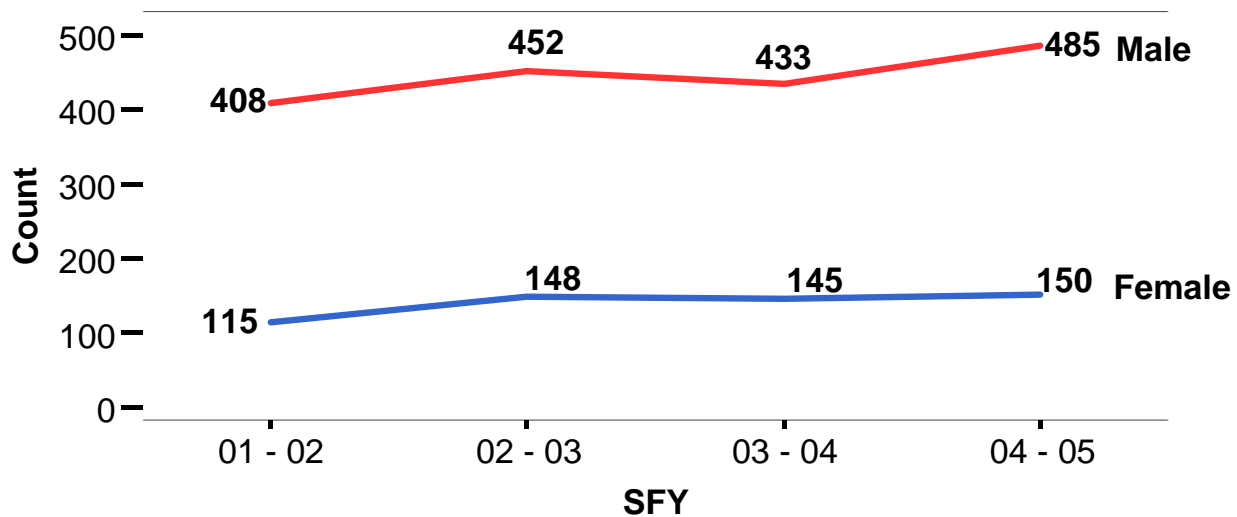
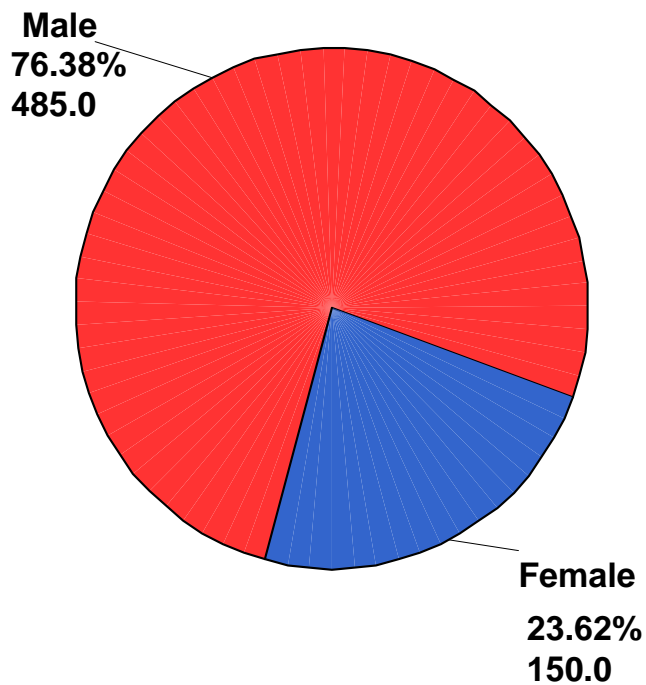


New Spinal Cord Injuries

	SFY							
	01 - 02		02 - 03		03 - 04		04 - 05	
	Count	Col %	Count	Col %	Count	Col %	Count	Col %
Ages, 0 - 15 (Years)	25	4.8%	29	4.8%	22	3.8%	20	3.1%
Ages, 16 - 20 (Years)	48	9.2%	66	11.0%	71	12.3%	70	11.0%
Ages, 21 - 44 (Years)	234	44.7%	289	48.2%	262	45.3%	293	46.1%
Ages, 45 - 64 (Years)	132	25.2%	137	22.8%	150	26.0%	156	24.6%
Ages, 65 plus (Years)	84	16.1%	79	13.2%	73	12.6%	96	15.1%
Table Total	523	100.0%	600	100.0%	578	100.0%	635	100.0%

* Counts include new injuries reported from all referral sources.

By Gender

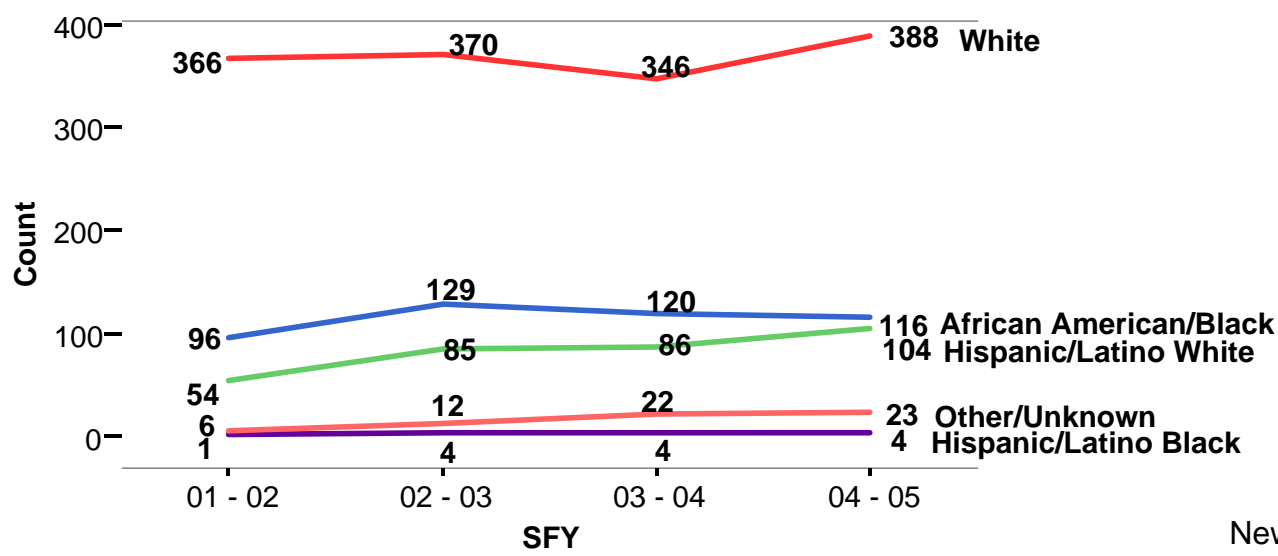
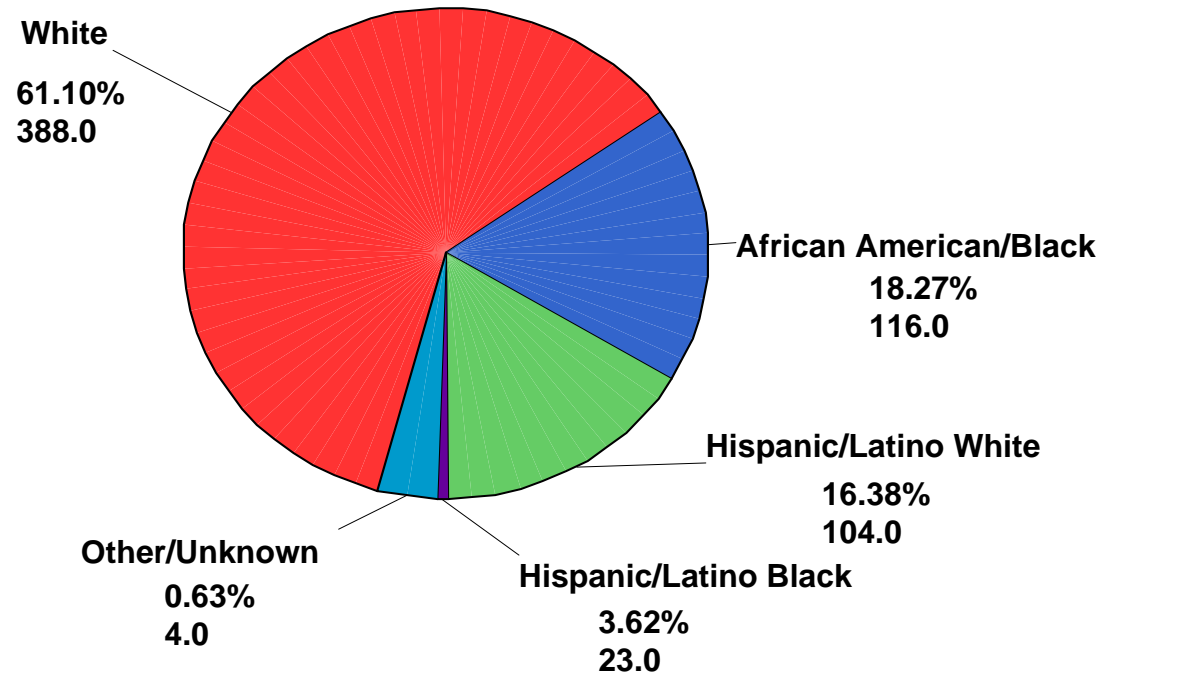


New Spinal Cord Injuries

		SFY							
		01 - 02		02 - 03		03 - 04		04 - 05	
		Count	Col %	Count	Col %	Count	Col %	Count	Col %
Gender	Male	408	78.0%	452	75.3%	433	74.9%	485	76.4%
	Female	115	22.0%	148	24.7%	145	25.1%	150	23.6%
Table Total		523	100%	600	100%	578	100%	635	100%

* Counts include new injuries reported from all referral sources.

Race/Ethnicity



New Spinal Cord Injuries

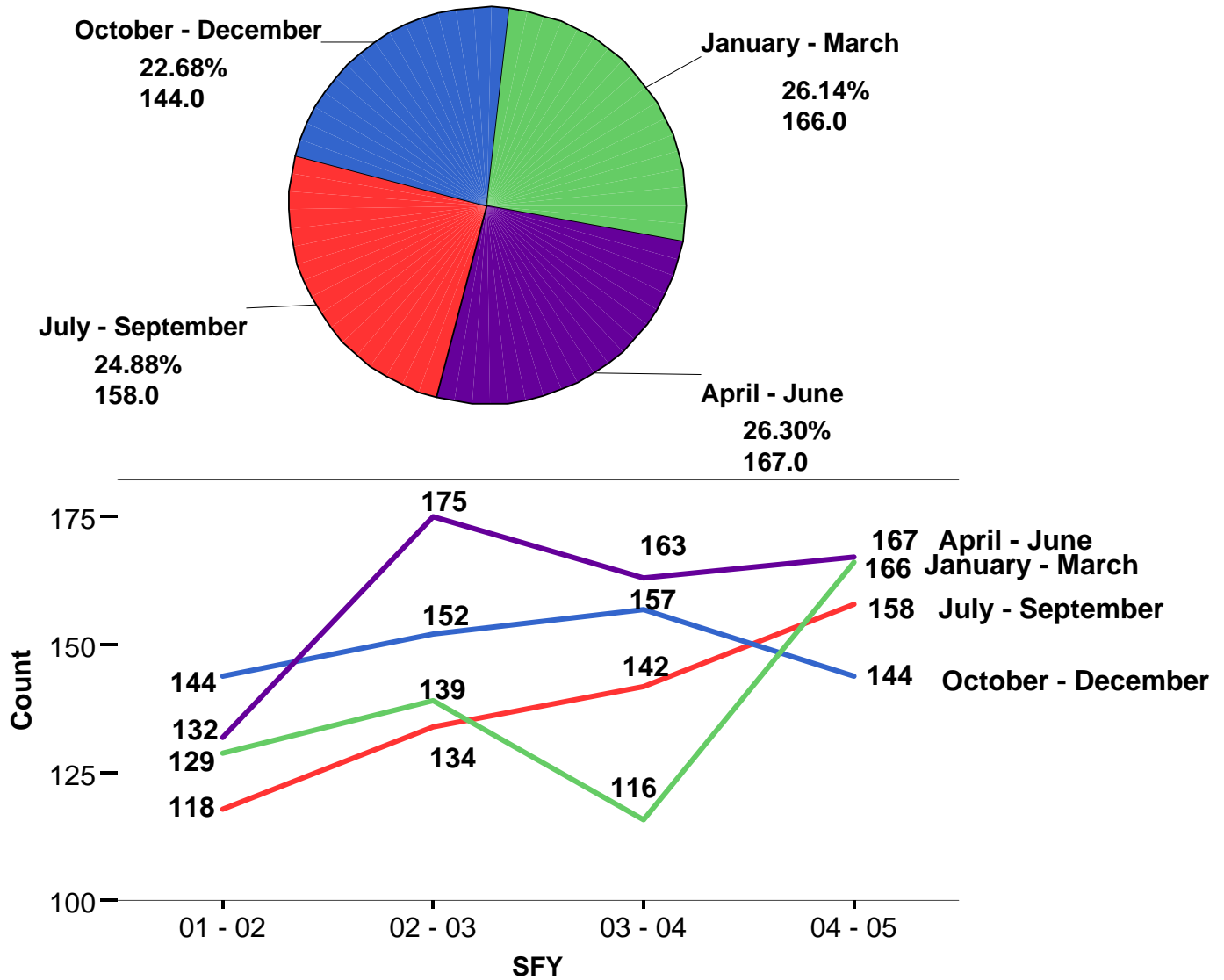
* See slide 6 for data interpretation cautions.

	SFY							
	01 - 02		02 - 03		03 - 04		04 - 05	
	Count	Col %	Count	Col %	Count	Col %	Count	Col %
Race/Ethnicity White	366	70.0%	370	61.7%	346	59.9%	388	61.1%
African American/Black	96	18.4%	129	21.5%	120	20.8%	116	18.3%
Hispanic/Latino White	54	10.3%	85	14.2%	86	14.9%	104	16.4%
Hispanic/Latino Black	1	.2%	4	.7%	4	.7%	4	.6%
Other/Unknown	6	1.1%	12	2.0%	22	3.8%	23	3.6%
Table Total	523	100.0%	600	100.0%	578	100.0%	635	100.0%

* Counts include new injuries reported from all referral sourced

**The Race/Ethnicity code for Hispanic was added to RIMS during SFY 2002-2003.

By Quarter of Injury Occurrence

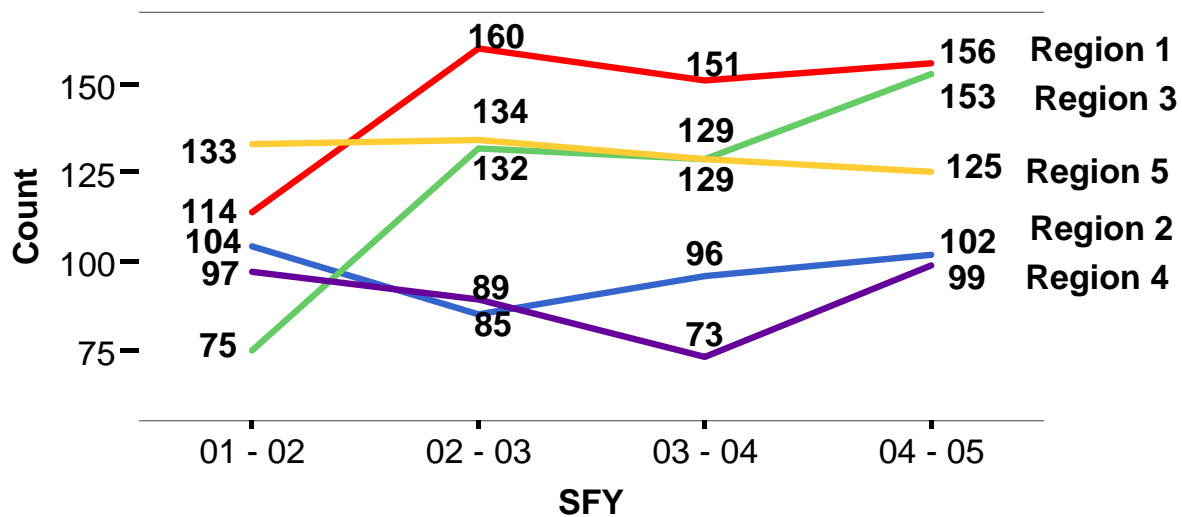
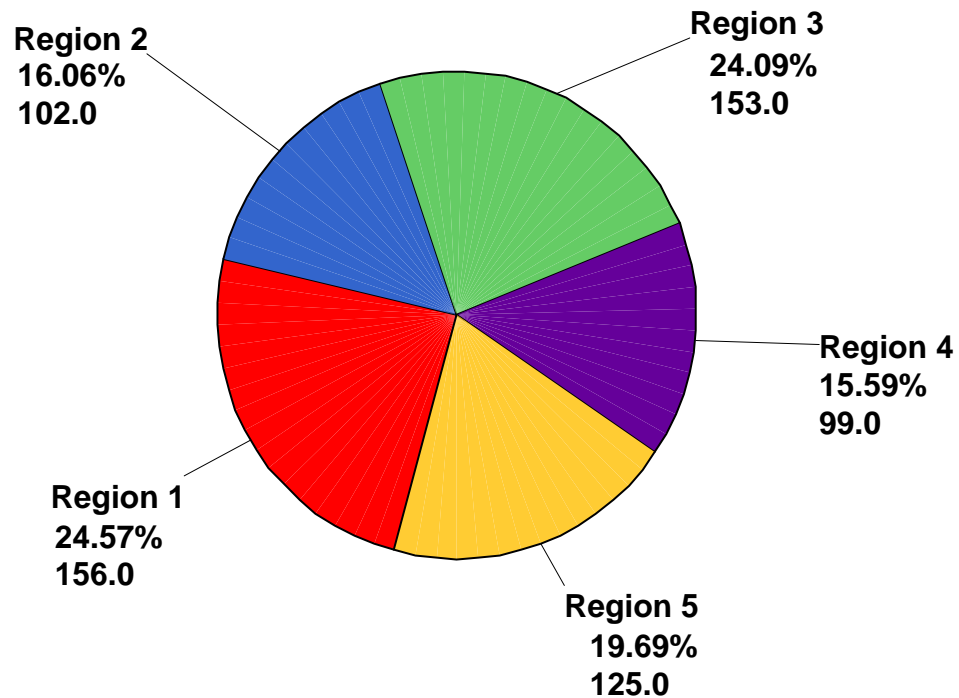


New Spinal Cord Injuries

			SFY							
			01 - 02		02 - 03		03 - 04		04 - 05	
			Count	Col %	Count	Col %	Count	Col %	Count	Col %
July - September	Injury Month	July	42	8.0%	40	6.7%	51	8.8%	53	8.3%
		August	43	8.2%	45	7.5%	38	6.6%	55	8.7%
		September	33	6.3%	49	8.2%	53	9.2%	50	7.9%
	Group Total	118	22.6%	134	22.3%	142	24.6%	158	24.9%	
October - December	Injury Month	October	50	9.6%	55	9.2%	51	8.8%	43	6.8%
		November	53	10.1%	55	9.2%	50	8.7%	45	7.1%
		December	41	7.8%	42	7.0%	56	9.7%	56	8.8%
	Group Total	144	27.5%	152	25.3%	157	27.2%	144	22.7%	
January - March	Injury Month	January	49	9.4%	54	9.0%	34	5.9%	50	7.9%
		February	36	6.9%	39	6.5%	38	6.6%	56	8.8%
		March	44	8.4%	46	7.7%	44	7.6%	60	9.4%
	Group Total	129	24.7%	139	23.2%	116	20.1%	166	26.1%	
April - June	Injury Month	April	43	8.2%	55	9.2%	45	7.8%	58	9.1%
		May	45	8.6%	54	9.0%	65	11.2%	58	9.1%
		June	44	8.4%	66	11.0%	53	9.2%	51	8.0%
	Group Total	132	25.2%	175	29.2%	163	28.2%	167	26.3%	
Table Total			523	100.0%	600	100.0%	578	100.0%	635	100.0%

* Counts include new injuries reported from all referral sources.

By Region of Injury Occurrence

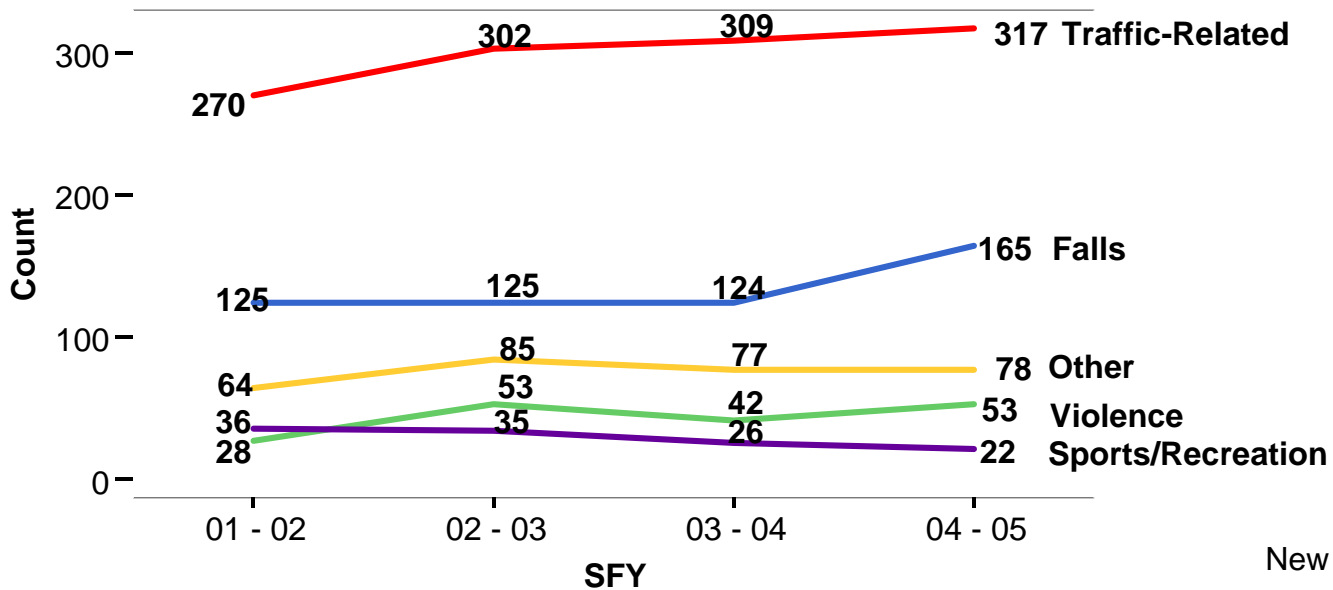
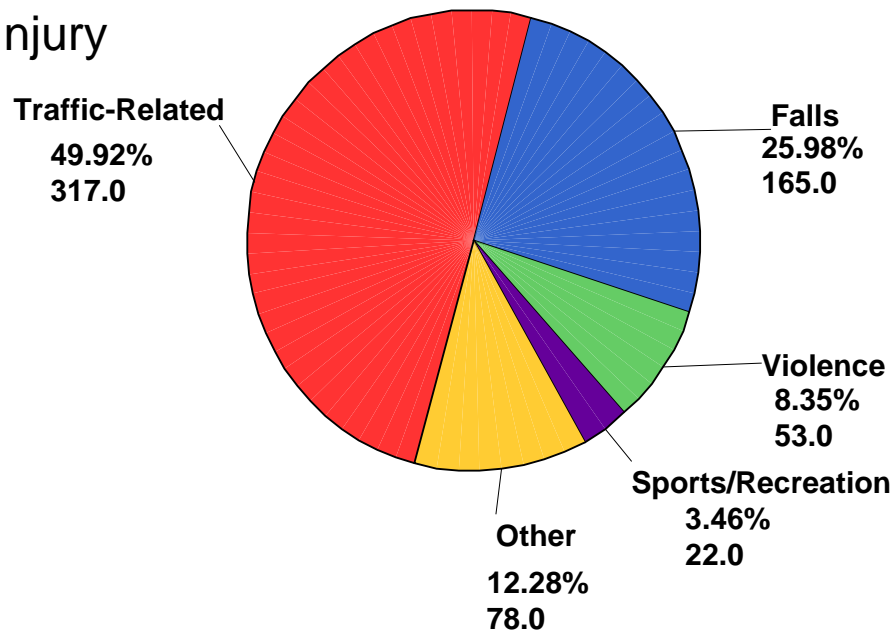


New Spinal Cord Injuries

		SFY							
		01 - 02		02 - 03		03 - 04		04 - 05	
		Count	Col %	Count	Col %	Count	Col %	Count	Col %
BSCIP	Region 1	114	21.8%	160	26.7%	151	26.1%	156	24.6%
Referral	Region 2	104	19.9%	85	14.2%	96	16.6%	102	16.1%
Region	Region 3	75	14.3%	132	22.0%	129	22.3%	153	24.1%
	Region 4	97	18.5%	89	14.8%	73	12.6%	99	15.6%
	Region 5	133	25.4%	134	22.3%	129	22.3%	125	19.7%
Table Total		523	100%	600	100%	578	100%	635	100%

* Counts include new injuries reported from all referral sources.

By Major Cause of Injury



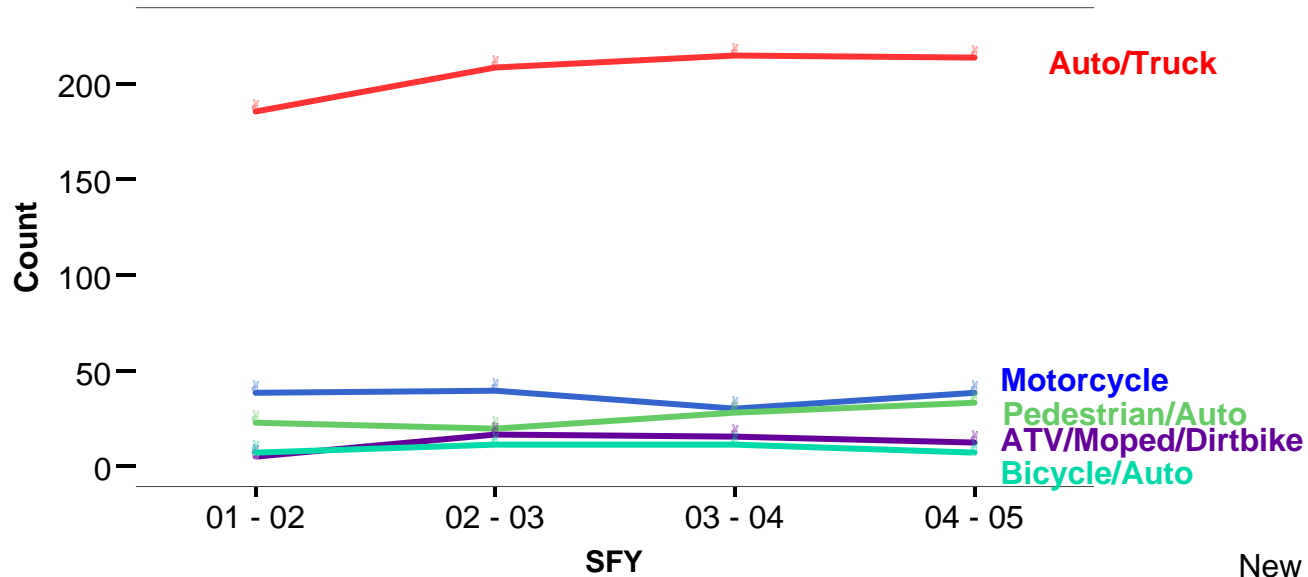
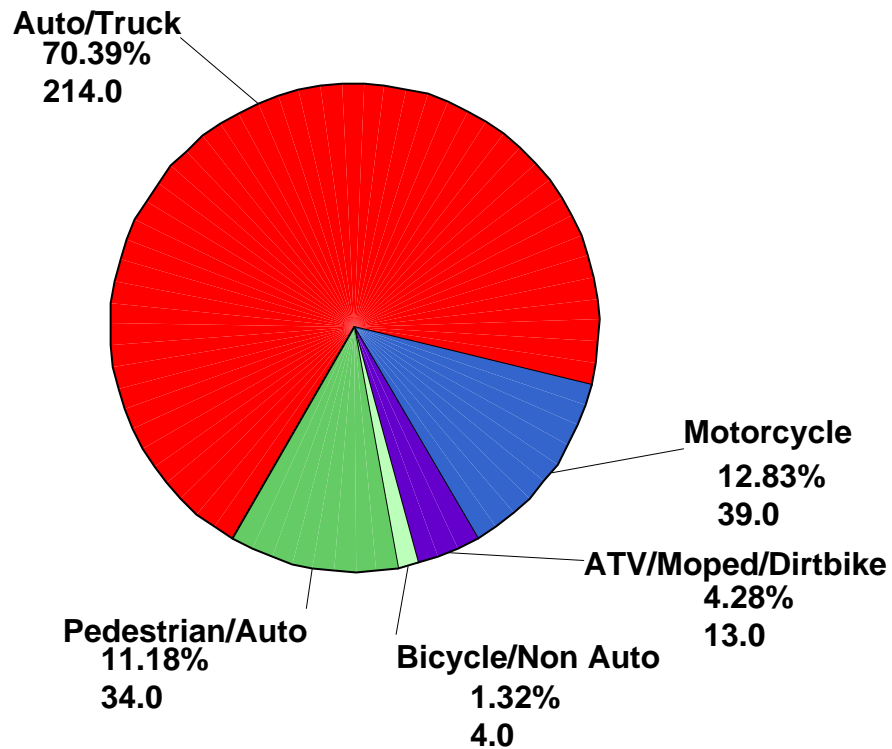
New Spinal Cord Injuries

			SFY							
			01 - 02		02 - 03		03 - 04		04 - 05	
			Count	Col %	Count	Col %	Count	Col %	Count	Col %
Traffic-Related	Cause	Auto/Truck	186	35.6%	209	34.8%	215	37.2%	214	33.7%
		Motorcycle	39	7.5%	40	6.7%	30	5.2%	39	6.1%
		ATV/Moped/Dirtbike	5	1.0%	17	2.8%	16	2.8%	13	2.0%
		Bicycle/Auto	7	1.3%	12	2.0%	12	2.1%	7	1.1%
		Bicycle/Non Auto	2	.4%	3	.5%	5	.9%	4	.6%
		Pedestrian/Auto	23	4.4%	20	3.3%	28	4.8%	34	5.4%
		Pedestrian/Bicycle					1	.2%		
		Pedestrian/Unknown	1	.2%			1	.2%		
		Unknown Vehicle	4	.8%						
		Airplane/Train Crash	3	.6%	1	.2%	1	.2%	6	.9%
			Group Total	270	51.6%	302	50.3%	309	53.5%	317
Falls	Cause	Jump/Fall	124	23.7%	124	20.7%	124	21.5%	164	25.8%
		Fall from Auto/Truck	1	.2%	1	.2%			1	.2%
		Group Total	125	23.9%	125	20.8%	124	21.5%	165	26.0%
Violence	Cause	Assault/Altercation	4	.8%	10	1.7%	4	.7%	9	1.4%
		Assault/Machine Gun	1	.2%						
		Handgun	14	2.7%	42	7.0%	34	5.9%	43	6.8%
		Rifle	2	.4%			1	.2%		
		Other Gun	5	1.0%						
		Stabbing	1	.2%	1	.2%	3	.5%	1	.2%
		Domestic Violence	1	.2%						
		Group Total	28	5.4%	53	8.8%	42	7.3%	53	8.3%
Sports/Recreation	Cause	Boating/Jet Ski	1	.2%	2	.3%	1	.2%		
		Diving into a pool	2	.4%	3	.5%	2	.3%	3	.5%
		Diving into a natural body of water	24	4.6%	22	3.7%	13	2.2%	13	2.0%
		Diving Unknown	2	.4%						
		Swimming	1	.2%	1	.2%	5	.9%	1	.2%
		Recreational Sport	3	.6%						
		Football/Soccer/Hockey					1	.2%	3	.5%
		Other Sport	3	.6%	7	1.2%	4	.7%	2	.3%
	Group Total	36	6.9%	35	5.8%	26	4.5%	22	3.5%	
Other	Cause	Falling Object	6	1.1%	9	1.5%	7	1.2%	12	1.9%
		Heavy Equipment	2	.4%	3	.5%	4	.7%	8	1.3%
		Medical Complication	7	1.3%	9	1.5%	1	.2%	7	1.1%
		Other	17	3.3%	18	3.0%	23	4.0%	22	3.5%
		Unknown	32	6.1%	46	7.7%	42	7.3%	29	4.6%
		Group Total	64	12.2%	85	14.2%	77	13.3%	78	12.3%
Table Total			523	100.0%	600	100.0%	578	100.0%	635	100.0%

* Counts include new injuries reported from all referral sources.

New Spinal Cord Injuries

Traffic-Related

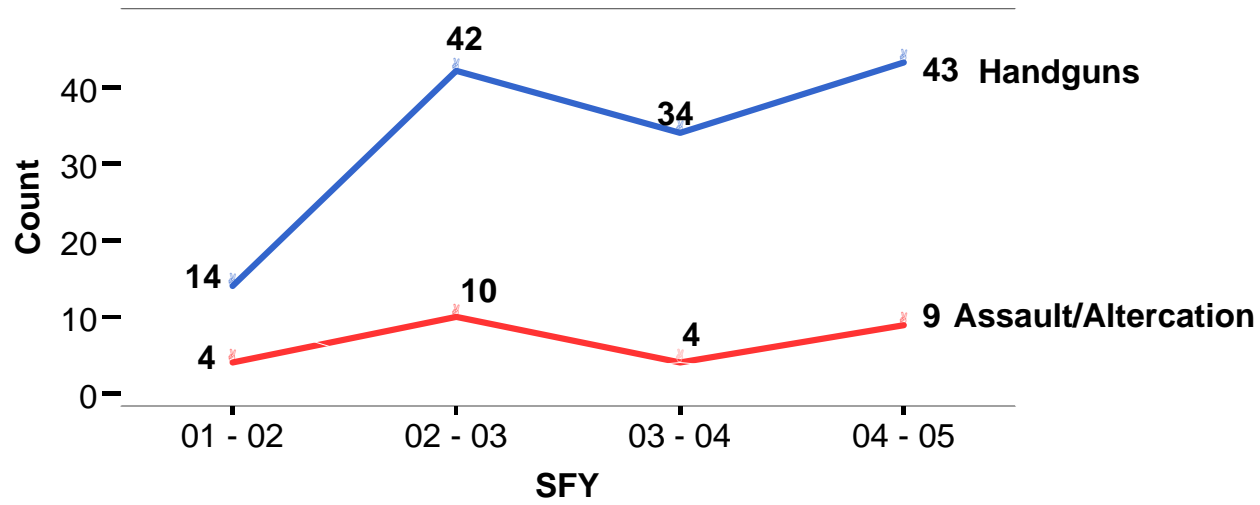
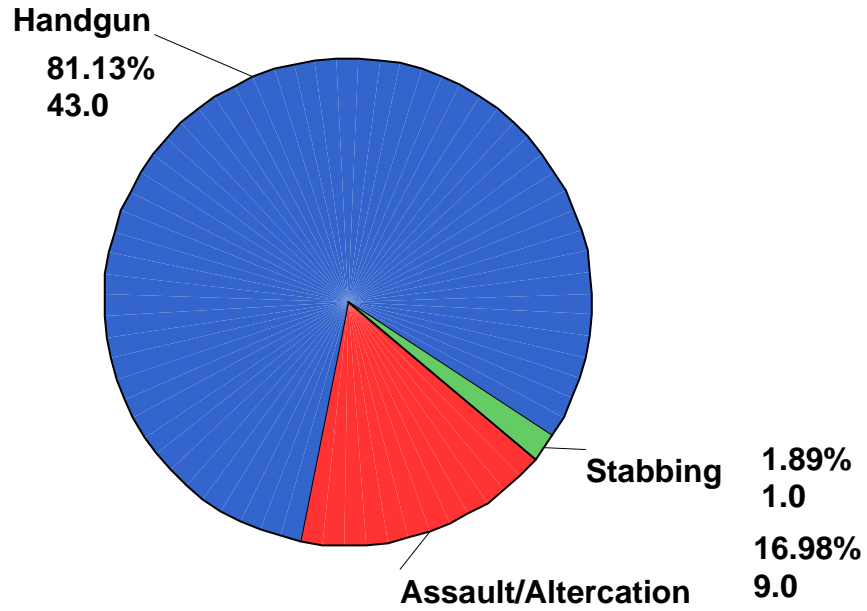


New Spinal Cord Injuries

		SFY							
		01 - 02		02 - 03		03 - 04		04 - 05	
		Count	Col %	Count	Col %	Count	Col %	Count	Col %
Cause of Injury	Auto/Truck	186	68.9%	209	69.2%	215	69.6%	214	67.5%
	Motorcycle	39	14.4%	40	13.2%	30	9.7%	39	12.3%
	ATV/Moped/Dirtbike	5	1.9%	17	5.6%	16	5.2%	13	4.1%
	Bicycle/Auto	7	2.6%	12	4.0%	12	3.9%	7	2.2%
	Bicycle/Non Auto	2	.7%	3	1.0%	5	1.6%	4	1.3%
	Unknown Vehicle	4	1.5%						
	Pedestrian/Auto	23	8.5%	20	6.6%	28	9.1%	34	10.7%
	Pedestrian/Bike					1	.3%		
	Pedestrian/Unknown	1	.4%			1	.3%		
	Airplane/Train Crash	3	1.1%	1	.3%	1	.3%	6	1.9%
Table Total		270	100.0%	302	100.0%	309	100.0%	317	100.0%

* Counts include new injuries reported from all referral sources.

Violence-Related



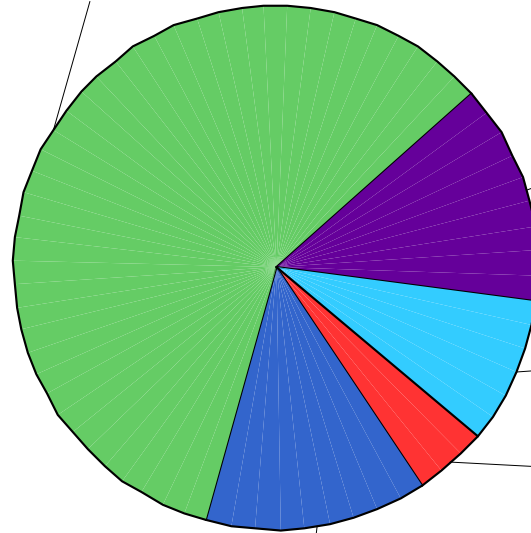
		SFY							
		01 - 02		02 - 03		03 - 04		04 - 05	
		Count	Col %	Count	Col %	Count	Col %	Count	Col %
Cause of Injury	Stabbing	1	3.6%	1	1.9%	3	7.1%	1	1.9%
	Handguns	14	50.0%	42	79.2%	34	81.0%	43	81.1%
	Other Gun	5	17.9%						
	Machine Gun	1	3.6%						
	Rifle	2	7.1%			1	2.4%		
	Assault/Altercation	4	14.3%	10	18.9%	4	9.5%	9	17.0%
	Domestic Violence	1	3.6%						
Table Total		28	100.0%	53	100.0%	42	100.0%	53	100.0%

* Counts include new injuries reported from all referral sources.

Sports-Related

Diving into a natural body of water

59.09%
13.0



Football/Soccer/Hockey

13.64%
3.0

Other Sport

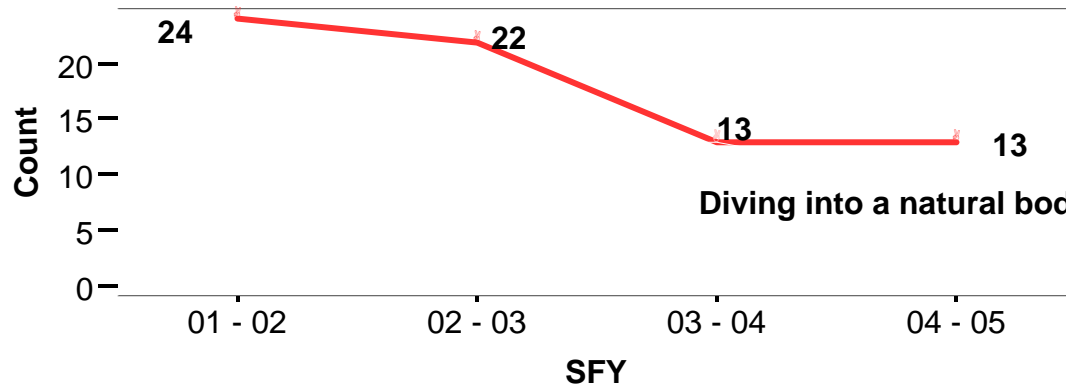
9.09%
2.0

Swimming

4.55%
1.0

Diving into a pool

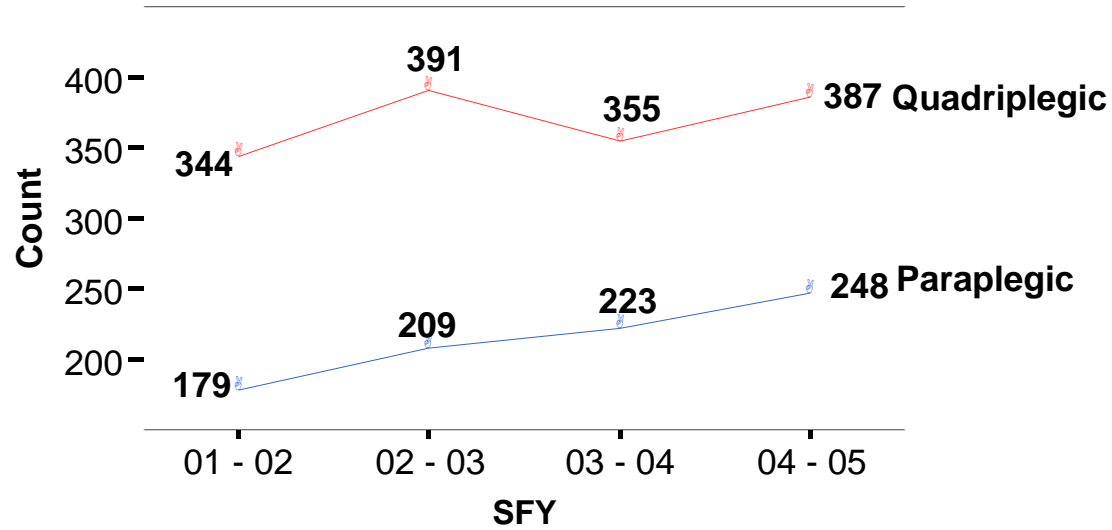
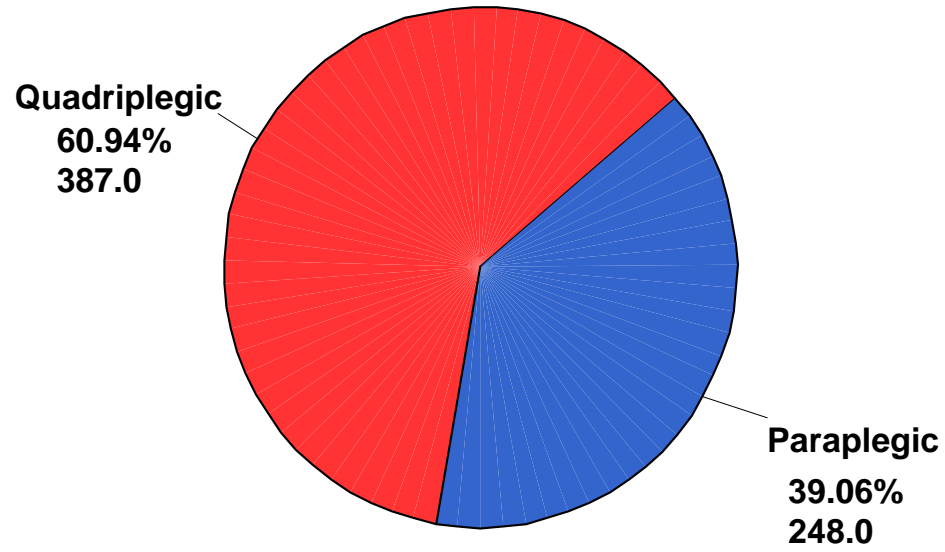
13.64%
3.0



Diving into a natural body of water

New Spinal Cord Injuries

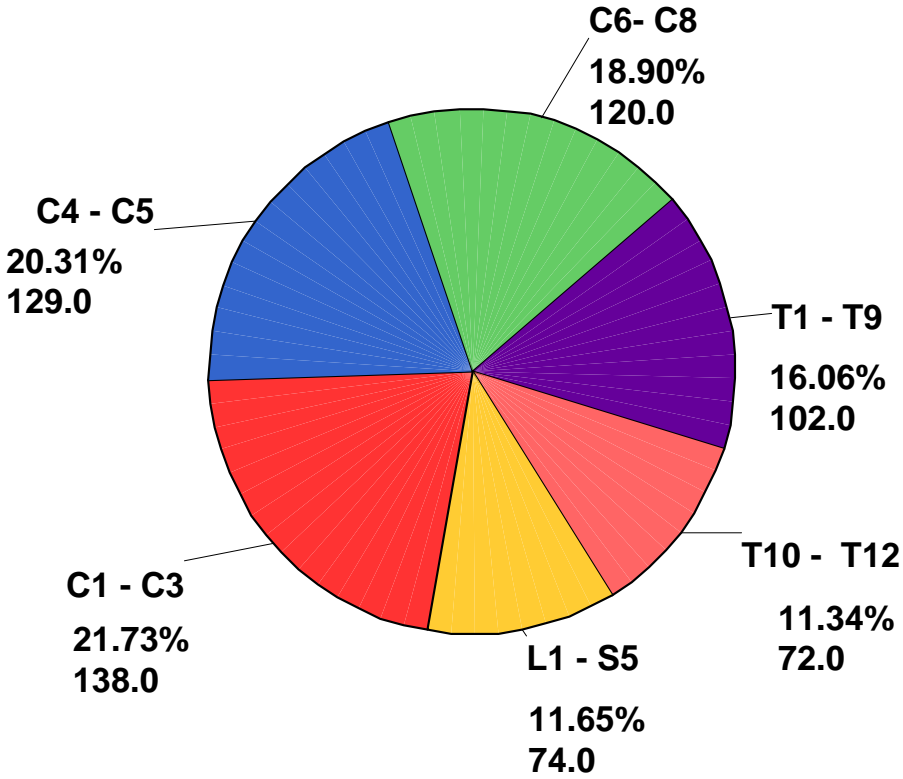
Level of Injury

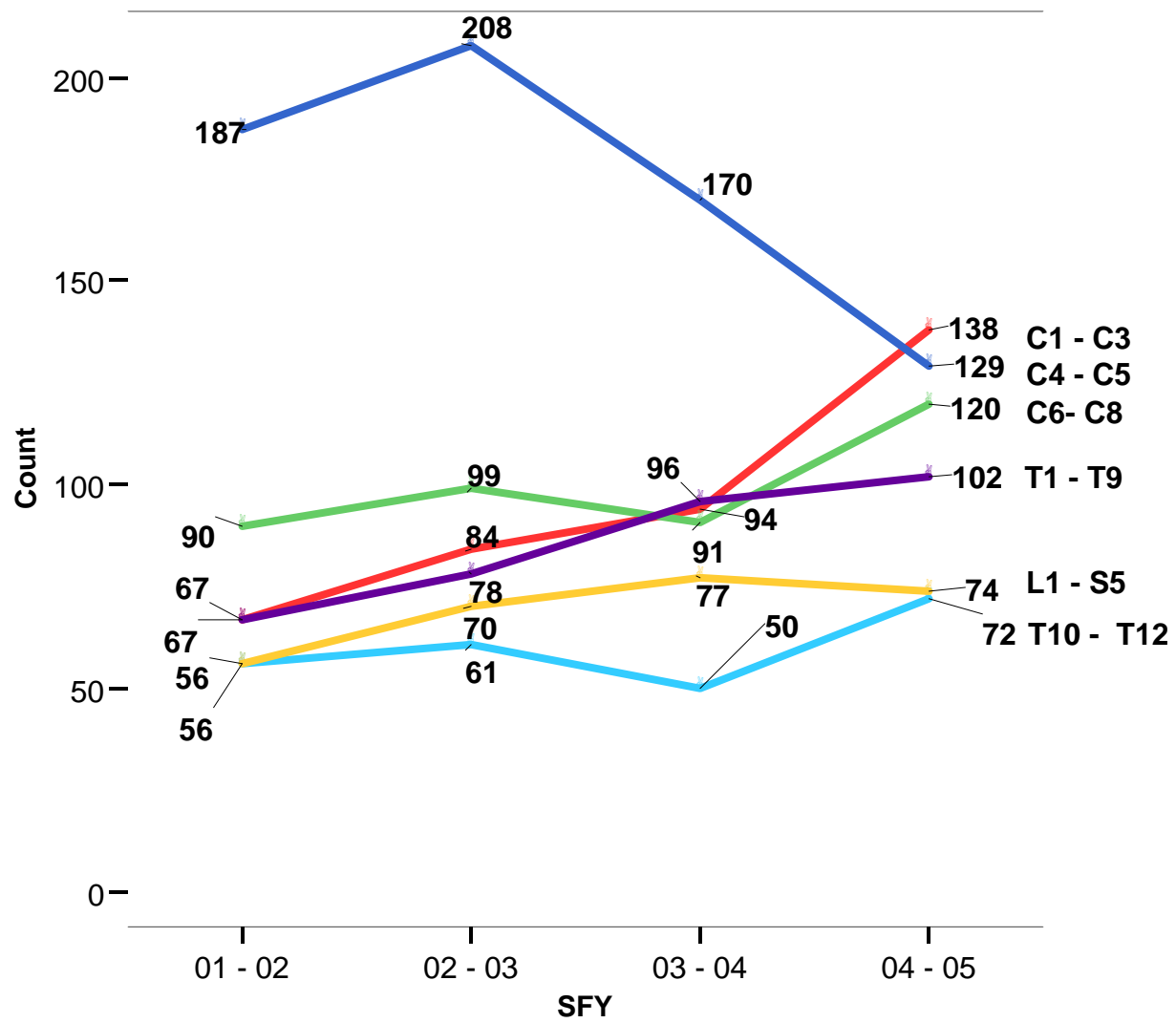


		SFY							
		01 - 02		02 - 03		03 - 04		04 - 05	
		Count	Col %	Count	Col %	Count	Col %	Count	Col %
Level of Spinal Cord Injury	Quadriplegic	344	65.8%	391	65.2%	355	61.4%	387	60.9%
	Paraplegic	179	34.2%	209	34.8%	223	38.6%	248	39.1%
Table Total		523	100%	600	100%	578	100%	635	100%

* Counts include new injuries reported from all referral sources.

Vertebrate Specific Level of Injury





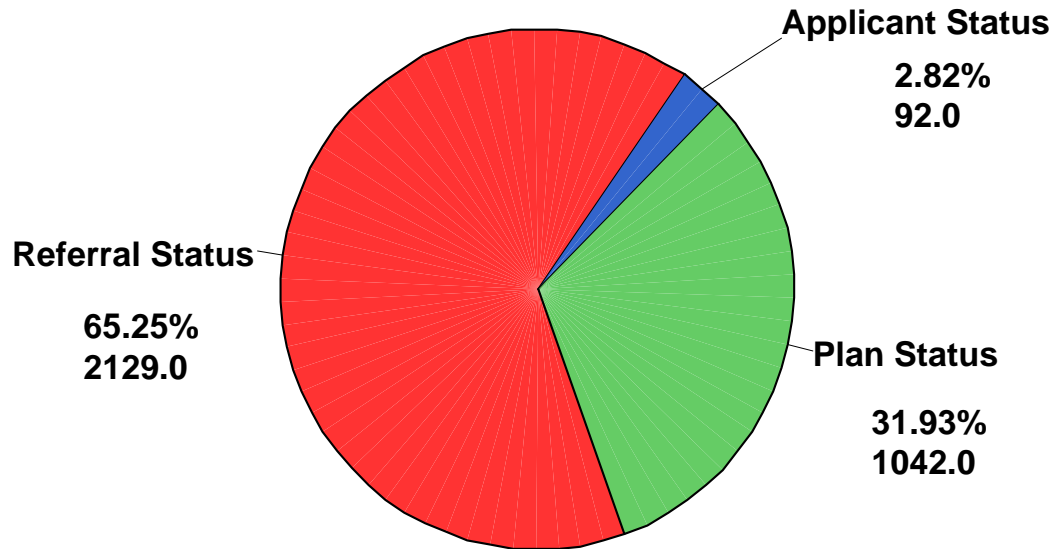
Spinal

		SFY							
		01 - 02		02 - 03		03 - 04		04 - 05	
		Count	Col %	Count	Col %	Count	Col %	Count	Col %
Level of Spinal Cord Injury	Cervical 1	16	3.1%	17	2.8%	32	5.5%	36	5.7%
	Cervical 2	34	6.5%	35	5.8%	28	4.8%	48	7.6%
	Cervical 3	14	2.7%	30	5.0%	32	5.5%	51	8.0%
	Cervical 4	52	9.9%	45	7.5%	48	8.3%	45	7.1%
	Cervical 5	135	25.8%	163	27.2%	122	21.1%	84	13.2%
	Cervical 6	62	11.9%	70	11.7%	63	10.9%	76	12.0%
	Cervical 7	28	5.4%	29	4.8%	28	4.8%	44	6.9%
	Lumbar 1	22	4.2%	24	4.0%	30	5.2%	32	5.0%
	Lumbar 2	7	1.3%	14	2.3%	12	2.1%	17	2.7%
	Lumbar 3	17	3.3%	12	2.0%	13	2.2%	7	1.1%
	Lumbar 4	6	1.1%	10	1.7%	12	2.1%	10	1.6%
	Lumbar 5	4	.8%	10	1.7%	10	1.7%	8	1.3%
	Thoracic 1	5	1.0%	11	1.8%	16	2.8%	16	2.5%
	Thoracic 2	3	.6%	6	1.0%	9	1.6%	10	1.6%
	Thoracic 3	7	1.3%	6	1.0%	8	1.4%	11	1.7%
	Thoracic 4	12	2.3%	9	1.5%	18	3.1%	15	2.4%
	Thoracic 5	7	1.3%	11	1.8%	12	2.1%	12	1.9%
	Thoracic 6	10	1.9%	9	1.5%	8	1.4%	14	2.2%
	Thoracic 7	8	1.5%	10	1.7%	8	1.4%	11	1.7%
	Thoracic 8	11	2.1%	12	2.0%	12	2.1%	8	1.3%
	Thoracic 9	4	.8%	4	.7%	5	.9%	5	.8%
	Thoracic 10	11	2.1%	13	2.2%	16	2.8%	19	3.0%
	Thoracic 11	15	2.9%	18	3.0%	16	2.8%	16	2.5%
	Thoracic 12	30	5.7%	30	5.0%	18	3.1%	37	5.8%
Unknown	3	.6%	2	.3%	2	.3%	3	.5%	
Table Total	523	100.0%	600	100.0%	578	100.0%	635	100.0%	

Closures
SFY 2004 – 2005

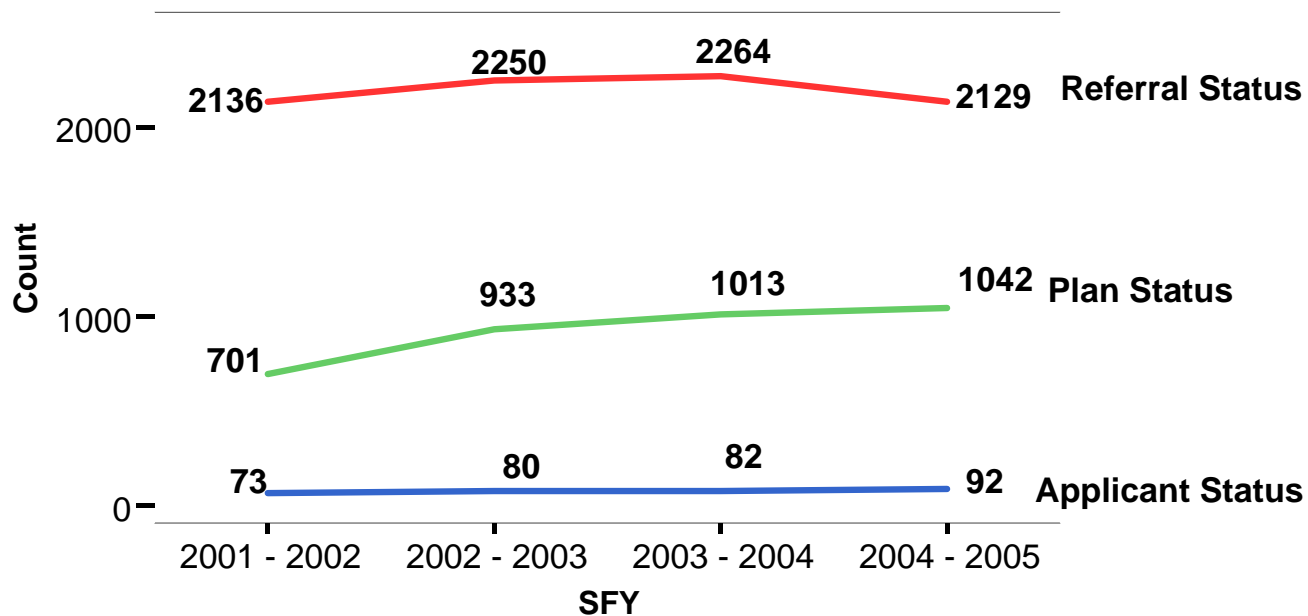
Closure Dates: 7/1/2004 – 6/30/2005

By Closure Status Type



	Brain		Spinal		Brain & Spinal		Table Total	
	Count	Col %	Count	Col %	Count	Col %	Count	Col %
Referral Status	1698	68.6%	311	49.7%	120	74.1%	2129	65.2%
Applicant Status	68	2.7%	19	3.0%	5	3.1%	92	2.8%
Plan Status	709	28.6%	296	47.3%	37	22.8%	1042	31.9%
Table Total	2475	100.0%	626	100.0%	162	100.0%	3263	100.0%

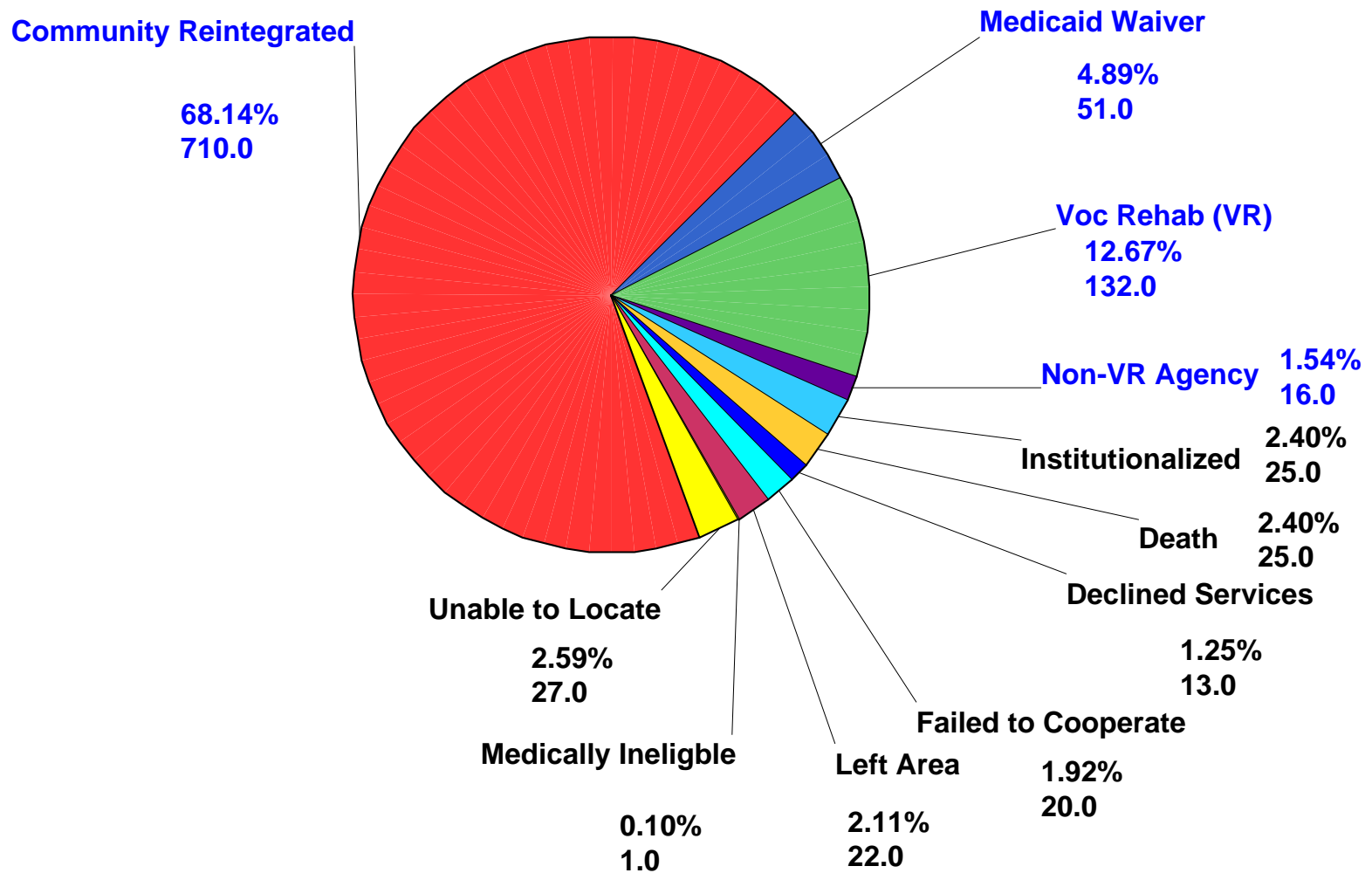
Closures



	2001 - 2002		2002 - 2003		2003 - 2004		2004 - 2005	
	Count	Col %	Count	Col %	Count	Col %	Count	Col %
Referral Status	2136	73.4%	2250	68.9%	2264	67.4%	2129	65.2%
Applicant Status	73	2.5%	80	2.5%	82	2.4%	92	2.8%
Plan Status	701	24.1%	934	28.6%	1013	30.2%	1042	32.0%
Table Total	2910	100.0%	3264	100.0%	3359	100.0%	3263	100.0%

Closures

By Closure Status Type For BSCIP Eligible Cases Closed from Plan Status 14



Of the 1042 cases closed during the year, 87.2% were considered to be community reintegrated at closures.

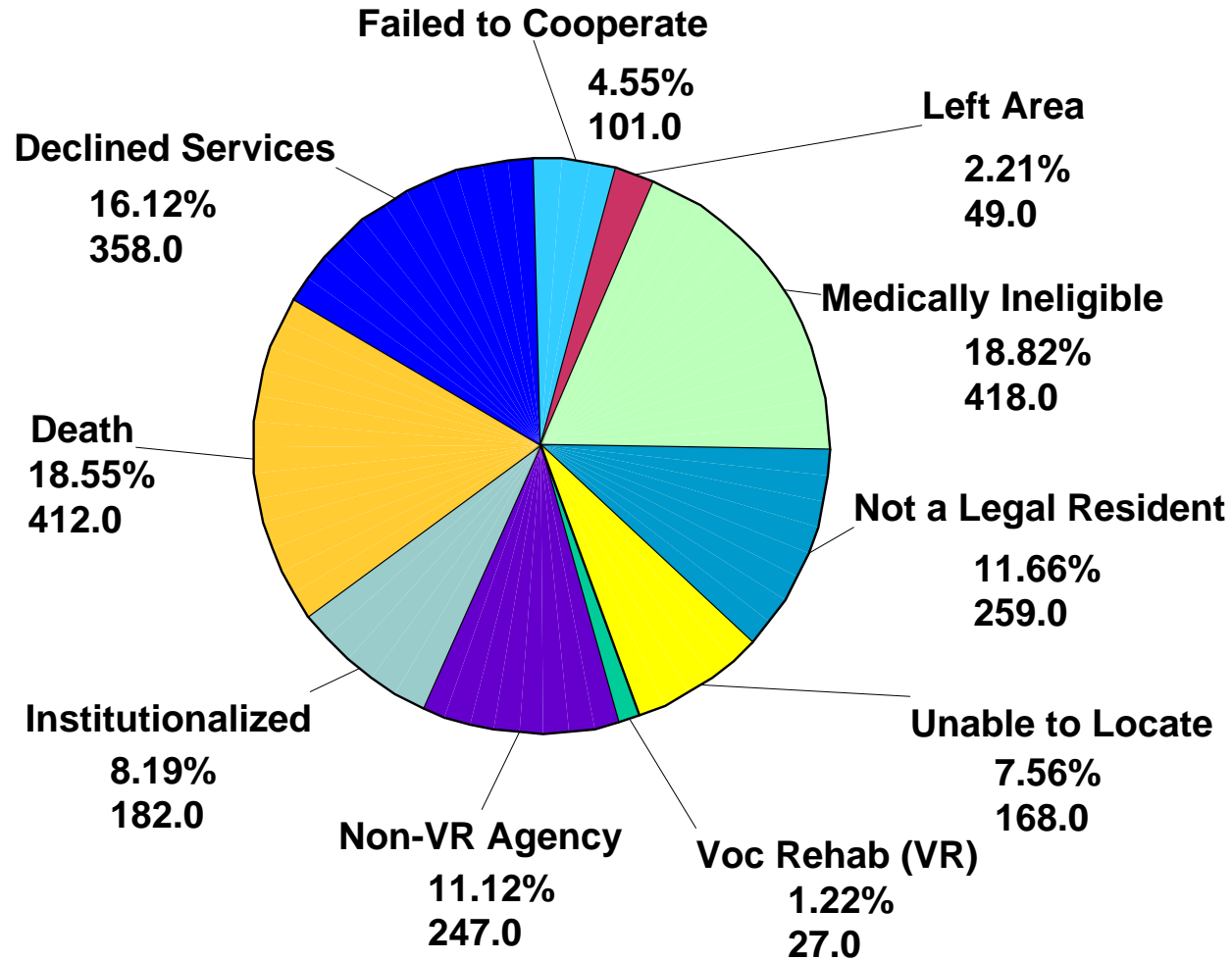
* Blue highlighting indicates successful community reintegration closure status type.

		Brain		Spinal		Brain & Spinal		Table Total	
		Count	Col %	Count	Col %	Count	Col %		
								Count	Col %
BSCIP Eligible, Community Reintegration Closures	Community Reintegration	514	72.5%	178	60.1%	18	48.6%	710	68.1%
	Referred to HCBWV	16	2.3%	30	10.1%	5	13.5%	51	4.9%
	Referred to VR	78	11.0%	48	16.2%	6	16.2%	132	12.7%
	Referred Non-VR Agency	13	1.8%	2	.7%	1	2.7%	16	1.5%
	Group Total	621	87.6%	258	87.2%	30	81.1%	909	87.2%
BSCIP Eligible, Non-Community Reintegration Closures	Other Eligible Case	1	.1%					1	.1%
	Death	10	1.4%	13	4.4%	2	5.4%	25	2.4%
	Institutionalized	14	2.0%	10	3.4%	1	2.7%	25	2.4%
	Unable to Locate	20	2.8%	5	1.7%	2	5.4%	27	2.6%
	Declined Services	12	1.7%			1	2.7%	13	1.2%
	Failure to Cooperate	14	2.0%	6	2.0%			20	1.9%
	Left Area	17	2.4%	4	1.4%	1	2.7%	22	2.1%
Group Total	88	12.4%	38	12.8%	7	18.9%	133	12.8%	
Table Total		709	100.0%	296	100.0%	37	100.0%	1042	100.0%

Closures

By Closure Status Type For BSCIP Ineligible Closures

Total Non-eligible Closures = 2221



Closures

Ineligible Closures by Injury Type		Brain		Spinal		Brain & Spinal		Table Total	
		Count	Col %	Count	Col %	Count	Col %	Count	Col %
BSCIP Ineligible Closures	Consumer Institutionalized	136	7.7%	32	9.7%	14	11.2%	182	8.2%
	Death	354	20.0%	33	10.0%	25	20.0%	412	18.6%
	Declined Service	286	16.2%	62	18.8%	10	8.0%	358	16.1%
	Failure to Cooperate	86	4.9%	12	3.6%	3	2.4%	101	4.5%
	Left Area	40	2.3%	8	2.4%	1	.8%	49	2.2%
	Medically Ineligible	314	17.8%	73	22.1%	31	24.8%	418	18.8%
	Not a Legal Resident	387	21.9%	82	24.8%	37	29.6%	506	22.8%
	Unable to Locate	145	8.2%	20	6.1%	3	2.4%	168	7.6%
Vocational Rehabilitation	18	1.0%	8	2.4%	1	.8%	27	1.2%	
Table Total		1766	100.0%	330	100.0%	125	100.0%	2221	100.0%

Interpreting Statistical Reports

Do you now feel like you have a pretty good idea about who the BSCIP program serves and what their clinical diagnoses are?

Can data be misleading without taking a closer look?

Absolutely!!!

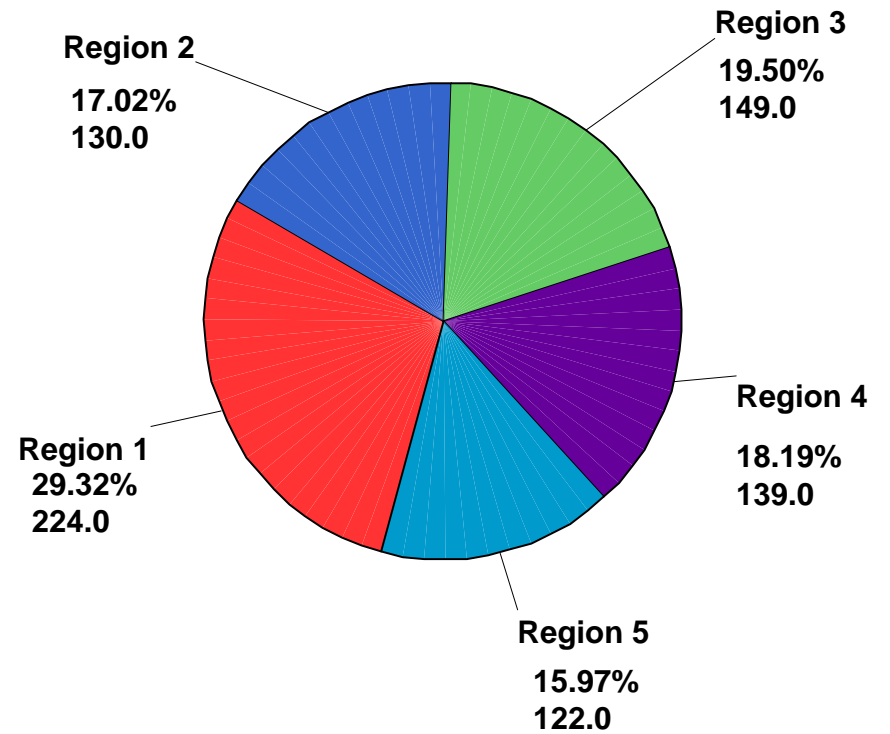
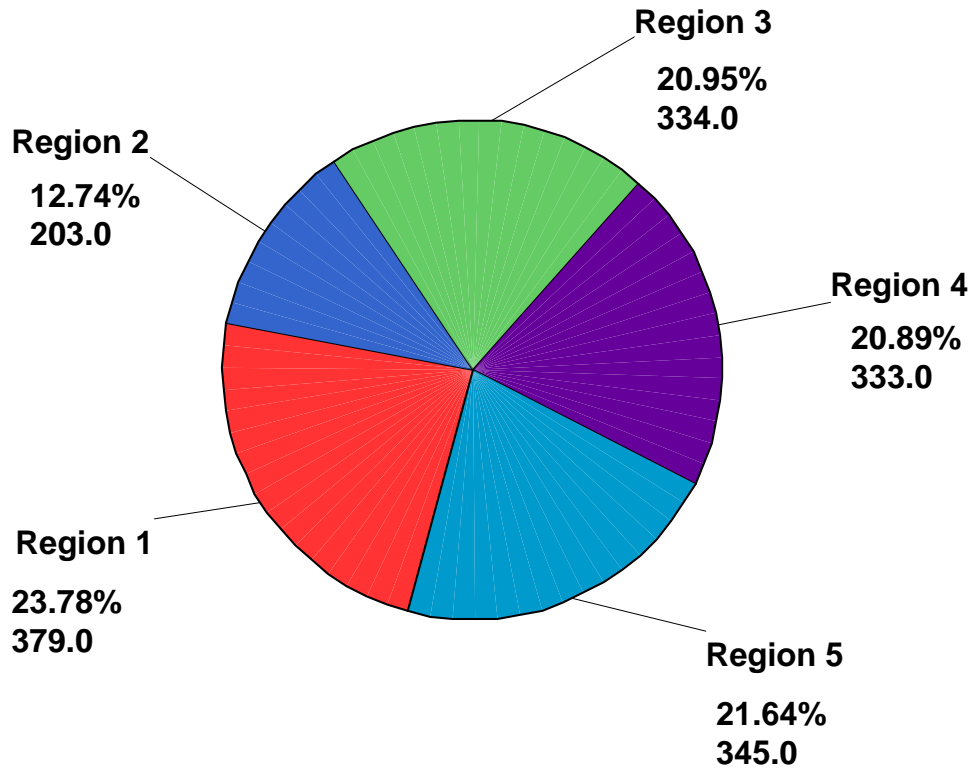
According to the following chart, Region 5 is ranked 4th in the state with regard to the number of clients served last year.

**Total Clients Served For All Injury Types
SFY 04 -05**

	Brain		Spinal		Brain & Spinal		Table Total	
	Count	Col %	Count	Col %	Count	Col %	Count	Col %
Region 1	348	23.6%	193	29.8%	31	26.5%	572	25.5%
Region 2	188	12.7%	115	17.8%	15	12.8%	318	14.2%
Region 3	308	20.9%	123	19.0%	26	22.2%	457	20.4%
Region 4	318	21.5%	124	19.2%	15	12.8%	457	20.4%
Region 5	315	21.3%	92	14.2%	30	25.6%	437	19.5%
Total	1477	100.0%	647	100.0%	117	100.0%	2241	100.0%

Hmmm, that is odd, according to slide number 41, Region 5 reported the largest percent of new brain injuries in the state?

Let's take a deeper look and see what is up.



Actually, Region 5 has the second highest number of reported brain injuries and the lowest number of spinal cord injuries.

Hmmmm, again, What's up here, why does the largest county in the state not have the highest number of spinal cord injuries?

Florida Population Estimates

Note: purple highlighting indicates the largest counties, blue indicates the fastest growing counties.

County	2002	%	2003	%	2004	&	% Change
State Total	16,772,046		17,164,199		17,613,368		2002 - 2004
Alachua	229,524	1.4%	232,110	1.4%	237,374	1.3%	5.3%
Baker	23,105	0.1%	23,472	0.1%	24,069	0.1%	5.5%
Bay	152,818	0.9%	155,414	0.9%	159,108	0.9%	5.4%
Bradford	26,649	0.2%	27,084	0.2%	27,865	0.2%	5.8%
Brevard	497,429	3.0%	510,622	3.0%	524,046	3.0%	7.2%
Broward	1,673,972	10.0%	1,706,363	9.9%	1,730,580	9.8%	5.4%
Calhoun	13,286	0.1%	13,491	0.1%	13,636	0.1%	3.4%
Charlotte	149,486	0.9%	152,865	0.9%	158,006	0.9%	7.9%
Citrus	123,704	0.7%	126,475	0.7%	129,822	0.7%	7.0%
Clay	151,746	0.9%	157,325	0.9%	164,868	0.9%	11.8%
Collier	281,148	1.7%	295,848	1.7%	309,369	1.8%	14.4%
Columbia	58,537	0.3%	59,218	0.3%	60,821	0.3%	6.2%
Dade	2,320,465	13.8%	2,354,404	13.7%	2,388,138	13.6%	4.3%

Florida Population Estimates							
County	2002	%	2003	%	2004	&	% Change 2002 - 2004
Desoto	32,959	0.2%	33,912	0.2%	34,220	0.2%	5.9%
Dixie	14,530	0.1%	14,768	0.1%	15,054	0.1%	7.4%
Duval	813,817	4.9%	829,937	4.8%	843,772	4.8%	5.3%
Escambia	300,421	1.8%	304,165	1.8%	308,068	1.7%	3.5%
Flagler	58,004	0.3%	62,511	0.4%	71,004	0.4%	28.5%
Franklin	10,250	0.1%	10,530	0.1%	10,682	0.1%	6.0%
Gadsden	46,073	0.3%	46,600	0.3%	46,965	0.3%	2.8%
Gilchrist	15,140	0.1%	15,637	0.1%	16,016	0.1%	9.1%
Glades	10,675	0.1%	10,759	0.1%	10,763	0.1%	2.4%
Gulf	15,290	0.1%	15,691	0.1%	16,235	0.1%	6.9%
Hamilton	13,952	0.1%	14,039	0.1%	14,346	0.1%	3.3%
Hardee	27,474	0.2%	27,434	0.2%	27,898	0.2%	3.0%
Hendry	36,174	0.2%	36,739	0.2%	37,800	0.2%	9.3%

Florida Population Estimates cont.								
County	2002	%	2003	%	2004	%	2005	% Change 2002 - 2004
Hernando	137,613	0.8%	141,574	0.8%	146,118	0.8%	149,184	8.4%
Highlands	89,343	0.5%	90,770	0.5%	92,456	0.5%	93,982	5.2%
Hillsborough	1,062,140	6.3%	1,085,318	6.3%	1,114,774	6.3%	1,137,290	7.1%
Holmes	18,746	0.1%	18,983	0.1%	19,027	0.1%	19,134	2.1%
Indian River	118,884	0.7%	121,887	0.7%	127,831	0.7%	130,679	9.9%
Jackson	47,963	0.3%	49,218	0.3%	48,891	0.3%	49,304	2.8%
Jefferson	13,329	0.1%	13,618	0.1%	14,110	0.1%	14,124	6.0%
Lafayette	7,245	0.0%	7,394	0.0%	7,559	0.0%	7,623	5.2%
Lake	233,622	1.4%	242,919	1.4%	254,246	1.4%	262,501	12.4%
Lee	481,014	2.9%	499,387	2.9%	526,157	3.0%	541,051	12.5%
Leon	249,744	1.5%	256,921	1.5%	265,258	1.5%	268,837	7.6%

Florida Population Estimates cont.							
County	2002	%	2003	%	2004	&	% Change 2002 - 2004
Levy	36,197	0.2%	36,856	0.2%	37,691	0.2%	6.4%
Liberty	7,165	0.0%	7,248	0.0%	7,372	0.0%	3.5%
Madison	18,974	0.1%	19,183	0.1%	19,564	0.1%	4.0%
Manatee	279,366	1.7%	288,888	1.7%	297,037	1.7%	8.7%
Marion	273,602	1.6%	284,232	1.7%	295,550	1.7%	10.7%
Martin	132,009	0.8%	135,280	0.8%	138,329	0.8%	6.8%
Monroe	81,030	0.5%	80,473	0.5%	81,336	0.5%	0.5%
Nassau	61,643	0.4%	63,523	0.4%	65,478	0.4%	9.1%
Okaloosa	178,036	1.1%	182,020	1.1%	186,744	1.1%	6.7%
Okeechobee	36,715	0.2%	37,377	0.2%	38,153	0.2%	5.2%
Orange	962,531	5.7%	989,962	5.8%	1,021,215	5.8%	9.0%
Osceola	197,901	1.2%	213,723	1.2%	228,755	1.3%	20.5%
Palm Beach	1,190,653	7.1%	1,218,508	7.1%	1,249,598	7.1%	7.3%
Pasco	364,900	2.2%	378,085	2.2%	392,507	2.2%	10.0%

Florida Population Estimates cont.

County	2002	%	2003	%	2004	&	2005	% Change 2002 – 2004
Pinellas	935,274	5.6%	941,435	5.5%	944,966	5.4%	951,322	1.7%
Polk	504,381	3.0%	514,247	3.0%	531,472	3.0%	540,538	7.2%
Putnam	71,481	0.4%	72,114	0.4%	73,435	0.4%	73,925	3.4%
Saint Johns	135,467	0.8%	141,216	0.8%	151,114	0.9%	156,350	15.4%
Saint Lucie	205,396	1.2%	213,614	1.2%	228,480	1.3%	234,106	14.0%
Santa Rosa	125,947	0.8%	129,842	0.8%	134,761	0.8%	138,444	9.9%
Sarasota	341,784	2.0%	350,664	2.0%	360,214	2.0%	366,613	7.3%
Seminole	389,549	2.3%	396,934	2.3%	405,565	2.3%	414,401	6.4%
Sumter	61,979	0.4%	63,522	0.4%	67,221	0.4%	69,966	12.9%
Suwannee	35,815	0.2%	37,479	0.2%	37,863	0.2%	38,740	8.2%
Taylor	19,878	0.1%	20,794	0.1%	20,977	0.1%	21,168	6.5%
Union	13,786	0.1%	13,793	0.1%	14,752	0.1%	14,968	8.6%
Volusia	462,377	2.8%	473,185	2.8%	486,874	2.8%	495,249	7.1%
Wakulla	24,340	0.1%	25,141	0.1%	25,692	0.1%	26,662	9.5%
Walton	46,052	0.3%	47,472	0.3%	51,167	0.3%	52,853	14.8%
Washington	21,702	0.1%	21,987	0.1%	22,534	0.1%	22,927	5.6%

Statistical reports are important, they provide the facts that guide:

Legislative Initiatives

Budget Requests

Program Planning

Research

Targeted Prevention and Education Programs

Performance Improvement

Monitoring Quality of Service and Care Issues

Etc...

The validity, accuracy and integrity of the reports generated from RIMS depends on you! Please take the time to verify, correct and update all information entered into RIMS