

## Sentencing Scoresheet Compliance Report

October 2004



### Executive Summary

This report is in fulfillment of 921.002(4)(c) Florida Statutes, which mandates that the Florida Department of Corrections shall, no later than October 1 of each year, provide the Legislature with a sentencing scoresheet compliance report. This report details the compliance of each judicial circuit in submitting to the Department sentencing scoresheets for offenders convicted of felonies between July 1, 2003 and June 30, 2004.

Included in this report is the following information:

- Using FY2003-04 commitments to the Department of Corrections as a baseline for comparing scoresheet submissions, a compliance rate is provided for each judicial circuit and county. Commitments include all felons convicted and sentenced to state prison, probation or community control as well as modifications to and revocations of supervision. Scoresheets reported are those received through September 1, 2004. The statewide rate of compliance for this time period is 71.9%, compared to 71.1% last fiscal year.
- For scoresheets received with sentence dates during FY2003-04 (including those with non-department sanctions), county, circuit and region totals are provided.
- Circuit and county totals for scoresheets with FY2003-04 sentence dates are listed according to most severe type of sanction. Of the 123,110 scoresheets received, 26,570 (21.6%) had a state prison sanction, 63,113 (51.3%) received a community supervision sanction and 31,012 (25.2%) received a county jail sanction.

The methodology for identifying missing scoresheets and calculating the compliance rate is described below:

- Consider all sentencing events (including new admissions, revocations and modifications) and compare them to the sentencing scoresheets received for each offender. There are three possible outcomes: the sentencing event matches the scoresheet, there is no scoresheet to match the sentencing event or there is a scoresheet but no record of a sentencing event. The compliance rate is then calculated by adding together the first two options (resulting in the total number of sentencing events) and comparing it to the number of scoresheets that match.

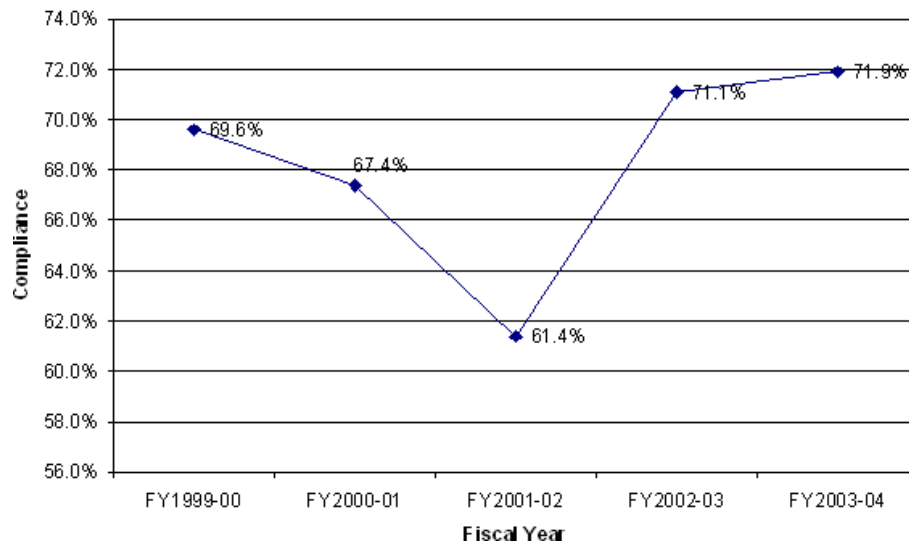
Note: The sentencing scoresheet database is dynamic in that it is constantly being updated. Every effort is made to include scoresheets that are received, however, there is a lag in data entry. While this lag time is generally less than 45 days it may exceed this in some of the larger circuits. As such, as more time is allowed for the data to mature, a more accurate and complete picture of the data may be presented.

### Scoresheet Preparation

Beginning on July 1, 2001 Florida Statute 921.0024(3) gave sole responsibility for the preparation of scoresheets to the State Attorney. Previously this responsibility had been shared between the Department of Corrections and the State Attorney.

Note: No scoresheets were received from Franklin, Lafayette and Jefferson Counties with sentence dates during FY2003-04.

## Sentencing Scoresheet Compliance Over 5 Years



### Heggs V. State

In February 2000, the Florida Supreme Court, in its review of Curtis Leon Heggs, determined Chapter Law 95-184 to be unconstitutional due to a violation of the single subject rule of the Florida Constitution. This Chapter Law contained substantial changes in sentencing law referred commonly to as the "1995 Sentencing Guidelines."

In some cases, the 1995 Sentencing Guidelines provided for greater punishment than the 1994 Sentencing Guidelines. Some enhancements were made to the Guidelines, designed primarily to target offenders with more serious current or prior criminal records. There were a significant number of changes and the nature of the changes provided for significant effects for some offenders. However, many offenders sentenced under the 1995 Guidelines would have scored identically under the 1994 version of the law.

In May 2000, the Supreme Court revised and finalized their opinion in this case and further clarified who is eligible for re-sentencing. This decision stated that "only those persons adversely affected by the amendments made by Chapter Law 95-184 may rely on our decision here to obtain relief. Stated another way, in the guidelines context, we determine that if a person's sentence imposed under the 1995 Guidelines could have been imposed under the 1994 Guidelines (without a departure), then that person shall not be entitled to relief."

The Supreme Court declined to rule in Heggs as to when the window period closed for offenders claiming their guidelines sentences are invalid due to the amendments contained in Chapter Law 95-184. However, in its review of Xzavier Trapp, the Supreme Court determined that the window period for challenging the Sentencing Guidelines provisions amended in Chapter Law 95-184 opened in October 1, 1995 and closed on May 24, 1997.

Approximately 192,267 sentencing events occurred under the 1995 sentencing structure for offenses committed between October 1, 1995 and May 24, 1997, based on the Guidelines scoresheets received by the Department of Corrections through February 29, 2000. Original analysis indicated that 73,467 of these sentencing events evidenced scores adversely affected by the changes brought about in the 1995 guidelines. This analysis did not determine that the 1995 sentence was outside the range of the 1994 sentence, only that the scoresheet calculation reflected a difference in points.

Due to the potential number of re-sentencing events, it would be inaccurate to attempt to analyze and compare the 1995 sentencing guidelines to other versions of the sentencing scoresheet. As re-sentencing events occur, the original 1995 scoresheet will be replaced in the database with a 1994 scoresheet. This is necessary because the re-sentencing invalidates the original sentencing event. Likewise, the new sentence will overwrite the original sentence in DOC sentence structure and databases. A computerized record of the original sentence is not kept in the database that is used for data analysis.

As such, it is not possible to determine which scoresheets are the result of a re-sentencing or to verify that a re-sentencing event was a result of the Heggs ruling. Therefore, any analysis of this time period would yield a mixture of offenders sentenced under both the 1994 and 1995 guidelines.

For the analysis of the compliance rates, we are excluding all scoresheets with offense dates that occur from October 1, 1995 through May 24, 1997 (less than 2% of all scoresheets received).

### Table of Contents

- [Scoresheets Received Compared with Admissions to the Department of Corrections by Judicial Circuit](#)
- [Scoresheets Received Compared with Admissions to the Department of Corrections by County](#)
- [Scoresheets Received by Region/ Judicial Circuit](#)
- [Scoresheets Received by County](#)
- [Sanctions Imposed by Judicial Circuit](#)
- [Sanctions Imposed by County](#)

Questions regarding this report should be directed to [Research Manager](#), Florida Department of Corrections, Bureau of Research and Data Analysis, 2601 Blair Stone Road, Tallahassee, Florida 32399-2500 or by phone at (850) 410-4488.

## Scoresheets Received Compared with Admissions\* to the Department of Corrections

(Scoresheets Received through September 1, 2004 for Offenders Sentenced between July 1, 2003 and June 30, 2004)\*\*

Judicial Circuit	Supervision Admissions			Prison Admissions			All Admissions		
	Total	With Scoresheets		Total	With Scoresheets		Total	With Scoresheets	
1 (Pensacola)	5,252	3,750	71.4%	1,593	1,123	70.5%	6,845	4,873	71.2%
2 (Tallahassee)	3,859	1,660	43.0%	1,221	727	59.5%	5,080	2,387	47.0%
3 (Lake City)	1,719	670	39.0%	447	240	53.7%	2,166	910	42.0%
4 (Jacksonville)	2,626	1,915	72.9%	1,808	1,560	86.3%	4,434	3,475	78.4%
5 (Tavares)	6,107	4,967	81.3%	1,365	1,054	77.2%	7,472	6,021	80.6%
6 (Clearwater)	10,203	9,616	94.2%	2,211	2,121	95.9%	12,414	11,737	94.5%
7 (Daytona)	5,071	2,866	56.5%	1,725	1,291	74.8%	6,796	4,157	61.2%
8 (Gainesville)	2,769	1,939	70.0%	756	483	63.9%	3,525	2,422	68.7%
9 (Orlando)	8,068	3,282	40.7%	2,745	1,164	42.4%	10,813	4,446	41.1%
10 (Bartow)	4,999	3,355	67.1%	1,862	1,018	54.7%	6,861	4,373	63.7%
11 (Miami)	8,179	5,635	68.9%	2,043	1,527	74.7%	10,222	7,162	70.1%
12 (Sarasota)	3,444	2,495	72.4%	734	557	75.9%	4,178	3,052	73.0%
13 (Tampa)	11,048	9,813	88.8%	2,625	2,280	86.9%	13,673	12,093	88.4%
14 (Panama City)	2,812	1,298	46.2%	1,129	698	61.8%	3,941	1,996	50.6%
15 (West Palm Beach)	3,829	2,640	68.9%	995	692	69.5%	4,824	3,332	69.1%
16 (Key West)	809	510	63.0%	177	106	59.9%	986	616	62.5%
17 (Ft. Lauderdale)	9,918	7,356	74.2%	2,595	2,013	77.6%	12,513	9,369	74.9%
18 (Sanford)	4,921	3,286	66.8%	1,386	877	63.3%	6,307	4,163	66.0%
19 (Ft. Pierce)	2,846	2,517	88.4%	1,415	1,312	92.7%	4,261	3,829	89.9%
20 (Ft. Myers)	5,082	4,512	88.8%	1,017	940	92.4%	6,099	5,452	89.4%
Statewide	103,561	74,082	71.5%	29,849	21,783	73.0%	133,410	95,865	71.9%

\*Admissions include original sentencing events that result in the offender being remanded to the department as well as modification of sentences and revocations of supervision.

\*\* Excludes offense dates between October 1, 1995 and May 24, 1997.

Note: Scoresheets prepared on an incorrect version of the guidelines due to offense date, or 1995 or subsequent scoresheets lacking judge's signature are not included in total. Also, totals do not include county jail or other sanctions.

### Information For...

- Media
- Inmate/Offender Families
- Victims
- Students
- Vendors
- Offenders
- Job Seekers
- Volunteers

### Publications

- Recidivism Report
- Annual Report
- Annual Substance Abuse Reports
- Quarterly Escapes Report
- Agency Strategic Plan
- Perimeter Check
- Quick Facts
- Inmate Orientation Handbook: English - Spanish
- More...

### Orgs & Offices

- Office of the Secretary
- Organization
- Organization Charts
- Statewide Facility Directory
- Frequently Called Numbers
- Citizens' Services

### About Us

- Who Are We?
- Mission
- History of Corrections

### How Do I...

- Pay Court Ordered Payments
- Call an Inmate
- File a Complaint
- Send an Inmate Money
- Write to an Inmate
- Visit an Inmate
- Register for Victim Notification
- Submit a Public Records Request

### Resources

- Contact Us
- Media Releases
- Open Government Information

### Special Programs

- Beekeeping Programs
- Second Chance Farm - Horse Programs
- Inmate Dog Adoption Programs
- Corrections Foundation



Sentencing Scoresheet Compliance Report  
July 1, 2003 - June 30, 2004

### Scoresheets Received Compared with Admissions\* to the Department of Corrections

(Scoresheets Received through September 1, 2004 for Offenders Sentenced between July 1, 2003 and June 30, 2004)\*\*

Judicial Circuit Number / County	Supervision Admissions			Prison Admissions			All Admissions		
	Total	With Scoresheets		Total	With Scoresheets		Total	With Scoresheets	
1 Escambia	2,582	2,190	84.8%	1008	918	91.1%	3,590	3,108	86.6%
Okaloosa	1,489	893	60.0%	342	80	23.4%	1,831	973	53.1%
Santa Rosa	591	443	75.0%	130	101	77.7%	721	544	75.5%
Walton	590	224	38.0%	113	24	21.2%	703	248	35.3%
2 Franklin	132	0	0.0%	29	0	0.0%	161	0	0.0%
Gadsden	646	429	66.4%	202	153	75.7%	848	582	68.6%
Jefferson	132	0	0.0%	40	0	0.0%	172	0	0.0%
Leon	2,566	1,198	46.7%	883	554	62.7%	3,449	1,752	50.8%
Liberty	56	33	58.9%	28	19	67.9%	84	52	61.9%
Wakulla	327	0	0.0%	39	1	2.6%	366	1	0.3%
3 Columbia	578	421	72.8%	185	165	89.2%	763	586	76.8%
Dixie	121	27	22.3%	24	6	25.0%	145	33	22.8%
Hamilton	147	5	3.4%	48	9	18.8%	195	14	7.2%
Lafayette	57	0	0.0%	22	0	0.0%	79	0	0.0%
Madison	144	7	4.9%	36	9	25.0%	180	16	8.9%
Suwannee	352	0	0.0%	80	1	1.3%	432	1	0.2%
Taylor	320	210	65.6%	52	50	96.2%	372	260	69.9%
4 Clay	451	400	88.7%	240	221	92.1%	691	621	89.9%
Duval	1,866	1,347	72.2%	1,412	1,243	88.0%	3,278	2,590	79.0%
Nassau	309	168	54.4%	156	96	61.5%	465	264	56.8%
5 Citrus	562	490	87.2%	200	183	91.5%	762	673	88.3%
Hernando	1,172	995	84.9%	254	199	78.3%	1,426	1,194	83.7%
Lake	1,504	1,275	84.8%	396	302	76.3%	1,900	1,577	83.0%
Marion	2,681	2,056	76.7%	416	295	70.9%	3,097	2,351	75.9%
Sumter	188	151	80.3%	99	75	75.8%	287	226	78.7%
6 Pasco	2,582	2,259	87.5%	571	527	92.3%	3,153	2,786	88.4%
Pinellas	7,621	7,357	96.5%	1,640	1,594	97.2%	9,261	8,951	96.7%
7 Flagler	224	180	80.4%	78	68	87.2%	302	248	82.1%
Putnam	574	438	76.3%	131	106	80.9%	705	544	77.2%
St. Johns	800	286	35.8%	262	150	57.3%	1,062	436	41.1%
Volusia	3,473	1,962	56.5%	1,254	967	77.1%	4,727	2,929	62.0%
8 Alachua	1,933	1,394	72.1%	502	345	68.7%	2,435	1,739	71.4%
Baker	154	73	47.4%	39	8	20.5%	193	81	42.0%
Bradford	255	195	76.5%	74	60	81.1%	329	255	77.5%
Gilchrist	64	8	12.5%	24	0	0.0%	88	8	9.1%
Levy	274	193	70.4%	101	63	62.4%	375	256	68.3%
Union	89	76	85.4%	16	7	43.8%	105	83	79.0%
9 Orange	6,453	2,365	36.6%	2,310	900	39.0%	8,763	3,265	37.3%
Osceola	1,615	917	56.8%	435	264	60.7%	2,050	1,181	57.6%
10 Hardee	231	140	60.6%	84	31	36.9%	315	171	54.3%

Highlands	582	348	59.8%	211	113	53.6%	793	461	58.1%
Polk	4,186	2,867	68.5%	1,567	874	55.8%	5,753	3,741	65.0%
11 Miami-Dade	8,179	5,635	68.9%	2,043	1,527	74.7%	10,222	7,162	70.1%
12 Desoto	208	101	48.6%	72	37	51.4%	280	138	49.3%
Manatee	1,731	1,063	61.4%	320	197	61.6%	2,051	1,260	61.4%
Sarasota	1,505	1,331	88.4%	342	323	94.4%	1,847	1,654	89.6%
13 Hillsborough	11,048	9,813	88.8%	2,625	2,280	86.9%	13,673	12,093	88.4%
14 Bay	1,707	949	55.6%	700	599	85.6%	2,407	1,548	64.3%
Calhoun	174	64	36.8%	50	24	48.0%	224	88	39.3%
Gulf	135	45	33.3%	45	16	35.6%	180	61	33.9%
Holmes	258	88	34.1%	92	4	4.3%	350	92	26.3%
Jackson	291	66	22.7%	159	46	28.9%	450	112	24.9%
Washington	247	86	34.8%	83	9	10.8%	330	95	28.8%
15 Palm Beach	3,829	2,640	68.9%	995	692	69.5%	4,824	3,332	69.1%
16 Monroe	809	510	63.0%	177	106	59.9%	986	616	62.5%
17 Broward	9,918	7,356	74.2%	2,595	2,013	77.6%	12,513	9,369	74.9%
18 Brevard	3,026	2,070	68.4%	955	583	61.0%	3,981	2,653	66.6%
Seminole	1,895	1,216	64.2%	431	294	68.2%	2,326	1,510	64.9%
19 Indian River	555	502	90.5%	360	323	89.7%	915	825	90.2%
Martin	723	589	81.5%	232	208	89.7%	955	797	83.5%
Okeechobee	221	212	95.9%	105	100	95.2%	326	312	95.7%
St. Lucie	1,347	1,214	90.1%	718	681	94.8%	2,065	1,895	91.8%
20 Charlotte	824	771	93.6%	200	186	93.0%	1,024	957	93.5%
Collier	2,023	1,816	89.8%	319	304	95.3%	2,342	2,120	90.5%
Glades	71	11	15.5%	20	3	15.0%	91	14	15.4%
Hendry	260	193	74.2%	32	22	68.8%	292	215	73.6%
Lee	1,904	1,721	90.4%	446	425	95.3%	2,350	2,146	91.3%
Statewide	103,561	74,082	71.5%	29,849	21,783	73.0%	133,410	95,865	71.9%

\*Admissions include original sentencing events that result in the offender being remanded to the department as well as modification of sentences and revocations of supervision.

\*\* Excludes offense dates between October 1, 1995 and May 24, 1997.

Note: Scoresheets prepared on an incorrect version of the guidelines due to offense date, or 1995 or subsequent scoresheets lacking judge's signature are not included in total. Also, totals do not include county jail or other sanctions.

**Information For...**

- Media
- Inmate/Offender Families
- Victims
- Students
- Vendors
- Offenders
- Job Seekers
- Volunteers

**Publications**

- Recidivism Report
- Annual Report
- Annual Substance Abuse Reports
- Quarterly Escapes Report
- Agency Strategic Plan
- Perimeter Check
- Quick Facts
- Inmate Orientation Handbook: [English - Spanish](#)
- [More...](#)

**Orgs & Offices**

- Office of the Secretary
- Organization
- Organization Charts
- Statewide Facility Directory
- Frequently Called Numbers
- Citizens' Services

**About Us**

- Who Are We?
- Mission
- History of Corrections

**How Do I...**

- Pay Court Ordered Payments
- Call an Inmate
- File a Complaint
- Send an Inmate Money
- Write to an Inmate
- Visit an Inmate
- Register for Victim Notification
- Submit a Public Records Request

**Resources**

- Contact Us
- Media Releases
- Open Government Information

**Special Programs**

- Beekeeping Programs
- Second Chance Farm - Horse Programs
- Inmate Dog Adoption Programs
- Corrections Foundation



Sentencing Scoresheet Compliance Report  
July 1, 2003 - June 30, 2004

[first](#) | [previous](#) | **4 of 7** | [next](#)

## Scoresheets Received by Region/Judicial Circuit

(Scoresheets Received through September 1, 2004 for Offenders Sentenced between July 1, 2003 and June 30, 2004)\*

Region	Scoresheets Received:	
	Number	Percent
<b>Region I</b>		
1 (Pensacola)	5,698	4.6%
2 (Tallahassee)	2,583	2.1%
3 (Lake City)	1,116	0.9%
4 (Jacksonville)	7,302	5.9%
7 (Daytona)	4,899	4.0%
8 (Gainesville)	3,020	2.5%
14 (Panama City)	2,202	1.8%
Subtotal	26,820	21.8%
<b>Region II</b>		
5 (Tavares)	7,209	5.9%
9 (Orlando)	5,120	4.2%
10 (Bartow)	4,762	3.9%
18 (Sanford)	4,372	3.6%
19 (Ft. Pierce)	4,641	3.8%
Subtotal	26,104	21.2%
<b>Region III</b>		
11 (Miami)	12,706	10.3%
15 (West Palm Beach)	5,839	4.7%
16 (Key West)	755	0.6%
17 (Ft. Lauderdale)	11,114	9.0%
Subtotal	30,414	24.7%
<b>Region IV</b>		
6 (Clearwater)	14,693	11.9%
12 (Sarasota)	4,321	3.5%
13 (Tampa)	14,176	11.5%
20 (Ft. Myers)	6,582	5.3%
Subtotal	39,772	32.3%
<b>GRAND TOTAL</b>	<b>123,110</b>	<b>100.0%</b>

\* Total number of scoresheets received by the Department, including those with offense dates between October 1, 1995 and May 24, 1997.

Sentencing Scoresheet Compliance Report  
July 1, 2003 - June 30, 2004

[first](#) | [previous](#) | **4 of 7** | [next](#)

### Information For...

- Media
- Inmate/Offender Families
- Victims
- Students
- Vendors
- Offenders
- Job Seekers
- Volunteers

### Publications

- Recidivism Report
- Annual Report
- Annual Substance Abuse Reports
- Quarterly Escapes Report
- Agency Strategic Plan
- Perimeter Check
- Quick Facts
- Inmate Orientation Handbook: [English](#) - [Spanish](#)

### Orgs & Offices

- Office of the Secretary
- Organization
- Organization Charts
- Statewide Facility Directory
- Frequently Called Numbers
- Citizens' Services

### About Us

- Who Are We?
- Mission

### How Do I...

- Pay Court Ordered Payments
- Call an Inmate
- File a Complaint
- Send an Inmate Money
- Write to an Inmate
- Visit an Inmate
- Register for Victim Notification
- Submit a Public Records

### Resources

- Contact Us
- Media Releases
- Open Government Information

### Special Programs

- Beekeeping Programs
- Second Chance Farm - Horse Programs
- Inmate Dog Adoption





## Sentencing Scoresheet Compliance Report

July 1, 2003 - June 30, 2004

[first](#) | [previous](#) | **5 of 7** | [next](#)

## Scoresheets Received by County

(Scoresheets Received through September 1, 2004 for Offenders Sentenced between July 1, 2003 and June 30, 2004)\*

Judicial Circuit Number/County	Scoresheets Received	
	Number	Percent
1 Escambia	3,705	3.0%
Okaloosa	1,056	0.9%
Santa Rosa	635	0.5%
Walton	302	0.2%
2 Franklin	0	0.0%
Gadsden	608	0.5%
Jefferson	0	0.0%
Leon	1,917	1.6%
Liberty	56	0.0%
Wakulla	2	0.0%
3 Columbia	767	0.6%
Dixie	44	0.0%
Hamilton	16	0.0%
Lafayette	0	0.0%
Madison	17	0.0%
Suwannee	2	0.0%
Taylor	270	0.2%
4 Clay	1,005	0.8%
Duval	5,894	4.8%
Nassau	403	0.3%
5 Citrus	745	0.6%
Hernando	1,303	1.1%
Lake	1,980	1.6%
Marion	2,919	2.4%
Sumter	262	0.2%
6 Pasco	3,429	2.8%
Pinellas	11,264	9.1%
7 Flagler	297	0.2%
Putnam	671	0.5%
St. Johns	505	0.4%
Volusia	3,426	2.8%
8 Alachua	2,134	1.7%
Baker	110	0.1%
Bradford	350	0.3%
Gilchrist	8	0.0%
Levy	320	0.3%
Union	98	0.1%
9 Orange	3,813	3.1%
Osceola	1,307	1.1%
10 Hardee	174	0.1%

Highlands	484	0.4%
Polk	4,104	3.3%
11 Miami-Dade	12,706	10.3%
12 Desoto	175	0.1%
Manatee	1,781	1.4%
Sarasota	2,365	1.9%
13 Hillsborough	14,176	11.5%
14 Bay	1,735	1.4%
Calhoun	93	0.1%
Gulf	65	0.1%
Holmes	91	0.1%
Jackson	112	0.1%
Washington	106	0.1%
15 Palm Beach	5,839	4.7%
16 Monroe	755	0.6%
17 Broward	11,114	9.0%
18 Brevard	2,654	2.2%
Seminole	1,718	1.4%
19 Indian River	978	0.8%
Martin	947	0.8%
Okeechobee	386	0.3%
St. Lucie	2,330	1.9%
20 Charlotte	1,060	0.9%
Collier	2,438	2.0%
Glades	23	0.0%
Hendry	263	0.2%
Lee	2,798	2.3%
Statewide	123,110	100.0%

\* Total number of scoresheets received by the Department, including those with offense dates between October 1, 1995 and May 24, 1997.

**Information For...**

- [Media](#)
- [Inmate/Offender Families](#)
- [Victims](#)
- [Students](#)
- [Vendors](#)
- [Offenders](#)
- [Job Seekers](#)
- [Volunteers](#)

**Publications**

- [Recidivism Report](#)
- [Annual Report](#)
- [Annual Substance Abuse Reports](#)
- [Quarterly Escapes Report](#)
- [Agency Strategic Plan](#)
- [Perimeter Check](#)
- [Quick Facts](#)
- [Inmate Orientation Handbook: English - Spanish](#)
- [More...](#)

**Orgs & Offices**

- [Office of the Secretary](#)
- [Organization](#)
- [Organization Charts](#)
- [Statewide Facility Directory](#)
- [Frequently Called Numbers](#)
- [Citizens' Services](#)

**About Us**

- [Who Are We?](#)
- [Mission](#)
- [History of Corrections](#)

**How Do I...**

- [Pay Court Ordered Payments](#)
- [Call an Inmate](#)
- [File a Complaint](#)
- [Send an Inmate Money](#)
- [Write to an Inmate](#)
- [Visit an Inmate](#)
- [Register for Victim Notification](#)
- [Submit a Public Records Request](#)

**Resources**

- [Contact Us](#)
- [Media Releases](#)
- [Open Government Information](#)

**Special Programs**

- [Beekeeping Programs](#)
- [Second Chance Farm - Horse Programs](#)
- [Inmate Dog Adoption Programs](#)
- [Corrections Foundation](#)





## Sanctions by Judicial Circuit

(Scoresheets Received through September 1, 2004 for Offenders Sentenced between July 1, 2003 and June 30, 2004)\*

Judicial Circuit	Sanction on Scoresheet										Total	
	County Jail		Probation		Community Control		State Prison		Other Disposition**			
1 (Pensacola)	1,062	18.6%	2,460	43.2%	696	12.2%	1,336	23.4%	144	2.5%	5,698	4.6%
2 (Tallahassee)	310	12.0%	1,274	49.3%	119	4.6%	866	33.5%	14	0.5%	2,583	2.1%
3 (Lake City)	81	7.3%	465	41.7%	127	11.4%	338	30.3%	105	9.4%	1,116	0.9%
4 (Jacksonville)	3,793	51.9%	1,413	19.4%	191	2.6%	1,873	25.7%	32	0.4%	7,302	5.9%
5 (Tavares)	1,692	23.5%	3,494	48.5%	496	6.9%	1,205	16.7%	322	4.5%	7,209	5.9%
6 (Clearwater)	2,916	19.8%	7,773	52.9%	950	6.5%	2,679	18.2%	375	2.6%	14,693	11.9%
7 (Daytona)	859	17.5%	2,005	40.9%	449	9.2%	1,535	31.3%	51	1.0%	4,899	4.0%
8 (Gainesville)	429	14.2%	1,553	51.4%	192	6.4%	596	19.7%	250	8.3%	3,020	2.5%
9 (Orlando)	1,373	26.8%	2,055	40.1%	294	5.7%	1,336	26.1%	62	1.2%	5,120	4.2%
10 (Bartow)	880	18.5%	2,150	45.1%	408	8.6%	1,307	27.4%	17	0.4%	4,762	3.9%
11 (Miami)	5,614	44.2%	4,629	36.4%	527	4.1%	1,936	15.2%	0	0.0%	12,706	10.3%
12 (Sarasota)	1,446	33.5%	1,879	43.5%	240	5.6%	688	15.9%	68	1.6%	4,321	3.5%
13 (Tampa)	3,085	21.8%	6,120	43.2%	1,655	11.7%	2,964	20.9%	352	2.5%	14,176	11.5%
14 (Panama City)	56	2.5%	914	41.5%	291	13.2%	864	39.2%	77	3.5%	2,202	1.8%
15 (West Palm Beach)	2,565	43.9%	2,401	41.1%	59	1.0%	800	13.7%	14	0.2%	5,839	4.7%
16 (Key West)	100	13.2%	441	58.4%	38	5.0%	133	17.6%	43	5.7%	755	0.6%
17 (Ft. Lauderdale)	1,968	17.7%	5,898	53.1%	728	6.6%	2,430	21.9%	90	0.8%	11,114	9.0%
18 (Sanford)	251	5.7%	2,509	57.4%	591	13.5%	1,021	23.4%	0	0.0%	4,372	3.6%
19 (Ft. Pierce)	871	18.8%	1,795	38.7%	350	7.5%	1,509	32.5%	116	2.5%	4,641	3.8%
20 (Ft. Myers)	1,661	25.2%	2,833	43.0%	651	9.9%	1,154	17.5%	283	4.3%	6,582	5.3%
Statewide	31,012	25.2%	54,061	43.9%	9,052	7.4%	26,570	21.6%	2,415	2.0%	123,110	100.0%

Note: County jail includes time served and state prison includes life sentences.

\* Total number of scoresheets received by the Department, including those with offense dates between October 1, 1995 and May 24, 1997.

\*\* "Other Disposition" includes fines, county and non-reporting probation, termination of probation and re-instatement to probation.

### Information For...

- Media
- Inmate/Offender Families
- Victims
- Students
- Vendors
- Offenders
- Job Seekers
- Volunteers

### Publications

- Recidivism Report
- Annual Report
- Annual Substance Abuse Reports
- Quarterly Escapes Report
- Agency Strategic Plan
- Perimeter Check
- Quick Facts
- Inmate Orientation Handbook: [English - Spanish](#)
- More...

### Orgs & Offices

- Office of the Secretary
- Organization
- Organization Charts
- Statewide Facility Directory
- Frequently Called Numbers
- Citizens' Services

### About Us

- Who Are We?
- Mission
- History of Corrections

### How Do I...

- Pay Court Ordered Payments
- Call an Inmate
- File a Complaint
- Send an Inmate Money
- Write to an Inmate
- Visit an Inmate
- Register for Victim Notification
- Submit a Public Records Request

### Resources

- Contact Us
- Media Releases
- Open Government Information

### Special Programs

- Beekeeping Programs
- Second Chance Farm - Horse Programs
- Inmate Dog Adoption Programs
- Corrections Foundation





## Sentencing Scoresheet Compliance Report

July 1, 2003 - June 30, 2004

[first](#) | [previous](#) | [7 of 7](#) | [next](#)

## Sanctions by County

(Scoresheets Received through September 1, 2004 for Offenders Sentenced between July 1, 2003 and June 30, 2004)\*

Judicial Circuit Number / County	Sanction on Scoresheet										Total	
	County Jail		Probation		Community Control		State Prison		Other Disposition**			
1 Escambia	778	21.2%	1,361	37.1%	369	10.1%	1,091	29.8%	67	1.8%	3,666	3.2%
Okaloosa	96	11.7%	470	57.2%	132	16.1%	117	14.3%	6	0.7%	821	0.7%
Santa Rosa	157	25.7%	257	42.1%	79	13.0%	104	17.0%	13	2.1%	610	0.5%
Walton	8	6.9%	65	56.0%	16	13.8%	24	20.7%	3	2.6%	116	0.1%
2 Franklin	0		0		0		0		0		0	
Gadsden	29	5.0%	360	62.4%	30	5.2%	158	27.4%	0	0.0%	577	0.5%
Jefferson	0	0.0%	14	73.7%	0	0.0%	5	26.3%	0	0.0%	19	0.0%
Leon	224	16.0%	615	43.8%	87	6.2%	463	33.0%	14	1.0%	1,403	1.2%
Liberty	2	4.8%	31	73.8%	0	0.0%	9	21.4%	0	0.0%	42	0.0%
Wakulla	0		0		0		0		0		0	
3 Columbia	24	6.9%	129	37.1%	47	13.5%	119	34.2%	29	8.3%	348	0.3%
Dixie	9	12.5%	28	38.9%	6	8.3%	23	31.9%	6	8.3%	72	0.1%
Hamilton	3	18.8%	5	31.3%	0	0.0%	8	50.0%	0	0.0%	16	0.0%
Lafayette	0		0		0		0		0		0	
Madison	13	13.8%	33	35.1%	10	10.6%	28	29.8%	10	10.6%	94	0.1%
Suwannee	0	0.0%	5	21.7%	2	8.7%	16	69.6%	0	0.0%	23	0.0%
Taylor	19	6.7%	128	44.9%	61	21.4%	50	17.5%	27	9.5%	285	0.2%
4 Clay	424	38.9%	346	31.8%	43	3.9%	265	24.3%	11	1.0%	1,089	0.9%
Duval	2,849	49.7%	1,150	20.1%	186	3.2%	1,522	26.5%	28	0.5%	5,735	5.0%
Nassau	126	26.8%	163	34.7%	34	7.2%	142	30.2%	5	1.1%	470	0.4%
5 Citrus	100	14.3%	342	48.8%	46	6.6%	185	26.4%	28	4.0%	701	0.6%
Hernando	175	17.7%	472	47.9%	155	15.7%	177	18.0%	7	0.7%	986	0.9%
Lake	555	29.9%	815	43.9%	156	8.4%	286	15.4%	43	2.3%	1,855	1.6%
Marion	423	18.2%	1,413	60.8%	152	6.5%	238	10.2%	99	4.3%	2,325	2.0%
Sumter	19	6.4%	129	43.4%	19	6.4%	129	43.4%	1	0.3%	297	0.3%
6 Pasco	305	12.2%	1,199	48.1%	462	18.5%	497	20.0%	28	1.1%	2,491	2.2%
Pinellas	2,439	23.0%	5,605	52.9%	230	2.2%	2,069	19.5%	246	2.3%	10,589	9.2%
7 Flagler	47	22.0%	99	46.3%	11	5.1%	57	26.6%	0	0.0%	214	0.2%
Putnam	69	13.9%	233	47.1%	59	11.9%	121	24.4%	13	2.6%	495	0.4%
St. Johns	42	8.3%	276	54.2%	17	3.3%	174	34.2%	0	0.0%	509	0.4%
Volusia	567	17.4%	1,370	41.9%	331	10.1%	989	30.3%	9	0.3%	3,266	2.8%
8 Alachua	337	15.2%	1,145	51.7%	176	7.9%	377	17.0%	179	8.1%	2,214	1.9%
Baker	4	6.8%	32	54.2%	5	8.5%	18	30.5%	0	0.0%	59	0.1%
Bradford	25	8.4%	158	53.2%	12	4.0%	100	33.7%	2	0.7%	297	0.3%
Gilchrist	2	7.7%	19	73.1%	3	11.5%	1	3.8%	1	3.8%	26	0.0%
Levy	48	14.3%	163	48.5%	22	6.5%	84	25.0%	19	5.7%	336	0.3%
Union	8	8.9%	48	53.3%	9	10.0%	21	23.3%	4	4.4%	90	0.1%
9 Orange	1,655	26.6%	2,716	43.7%	335	5.4%	1,463	23.5%	48	0.8%	6,217	5.4%
Osceola	493	25.2%	910	46.5%	182	9.3%	350	17.9%	20	1.0%	1,955	1.7%
10 Hardee	33	15.4%	121	56.5%	19	8.9%	39	18.2%	2	0.9%	214	0.2%

Highlands	16	6.1%	116	44.4%	34	13.0%	94	36.0%	1	0.4%	261	0.2%
Polk	601	15.4%	1,808	46.4%	464	11.9%	1,017	26.1%	4	0.1%	3,894	3.4%
11 Miami-Dade	3,030	38.0%	3,293	41.3%	409	5.1%	1,241	15.6%	0	0.0%	7,973	6.9%
12 Desoto	59	29.6%	65	32.7%	20	10.1%	52	26.1%	3	1.5%	199	0.2%
Manatee	306	19.4%	914	57.8%	147	9.3%	214	13.5%	0	0.0%	1,581	1.4%
Sarasota	803	32.5%	926	37.5%	207	8.4%	482	19.5%	50	2.0%	2,468	2.1%
13 Hillsborough	2,012	17.0%	5,413	45.7%	2,064	17.4%	2,178	18.4%	185	1.6%	11,852	10.3%
14 Bay	103	5.5%	780	41.8%	319	17.1%	640	34.3%	22	1.2%	1,864	1.6%
Calhoun	0	0.0%	53	63.1%	19	22.6%	12	14.3%	0	0.0%	84	0.1%
Gulf	0		0		0		0		0		0	
Holmes	1	1.6%	55	85.9%	5	7.8%	3	4.7%	0	0.0%	64	0.1%
Jackson	10	14.1%	24	33.8%	19	26.8%	18	25.4%	0	0.0%	71	0.1%
Washington	1	1.1%	64	71.9%	13	14.6%	10	11.2%	1	1.1%	89	0.1%
15 Palm Beach	2,385	41.2%	2,430	41.9%	88	1.5%	863	14.9%	28	0.5%	5,794	5.0%
16 Monroe	51	11.0%	277	59.6%	42	9.0%	74	15.9%	21	4.5%	465	0.4%
17 Broward	2,432	19.3%	6,390	50.8%	932	7.4%	2,739	21.8%	89	0.7%	12,582	11.0%
18 Brevard	41	1.6%	1,402	54.6%	468	18.2%	657	25.6%	0	0.0%	2,568	2.2%
Seminole	114	7.9%	953	65.9%	102	7.0%	278	19.2%	0	0.0%	1,447	1.3%
19 Indian River	185	19.3%	408	42.5%	83	8.7%	277	28.9%	6	0.6%	959	0.8%
Martin	239	25.2%	433	45.7%	50	5.3%	224	23.6%	2	0.2%	948	0.8%
Okeechobee	53	15.6%	135	39.7%	18	5.3%	120	35.3%	14	4.1%	340	0.3%
St. Lucie	270	14.4%	794	42.4%	167	8.9%	567	30.3%	73	3.9%	1,871	1.6%
20 Charlotte	165	16.3%	399	39.3%	194	19.1%	247	24.4%	9	0.9%	1,014	0.9%
Collier	467	20.3%	1,152	50.2%	237	10.3%	392	17.1%	48	2.1%	2,296	2.0%
Glades	12	18.5%	37	56.9%	5	7.7%	7	10.8%	4	6.2%	65	0.1%
Hendry	60	21.2%	157	55.5%	23	8.1%	37	13.1%	6	2.1%	283	0.2%
Lee	649	19.9%	1,546	47.3%	295	9.0%	658	20.1%	119	3.6%	3,267	2.8%
Statewide	26,172	22.8%	52,449	45.7%	9,927	8.6%	24,620	21.4%	1,653	1.4%	114,821	100.0%

Note: County jail includes time served and state prison includes life sentences.

\* Total number of scoresheets received by the Department, including those with offense dates between October 1, 1995 and May 24, 1997.

\*\* "Other Disposition" includes fines, county and non-reporting probation, termination of probation and re-instatement to probation.

**Information For...**

- Media
- Inmate/Offender Families
- Victims
- Students
- Vendors
- Offenders
- Job Seekers
- Volunteers

**Publications**

- Recidivism Report
- Annual Report
- Annual Substance Abuse Reports
- Quarterly Escapes Report
- Agency Strategic Plan
- Perimeter Check
- Quick Facts
- Inmate Orientation Handbook: [English - Spanish](#)
- More...

**Orgs & Offices**

- Office of the Secretary
- Organization
- Organization Charts
- Statewide Facility Directory
- Frequently Called Numbers
- Citizens' Services

**About Us**

- Who Are We?
- Mission
- History of Corrections

**How Do I...**

- Pay Court Ordered Payments
- Call an Inmate
- File a Complaint
- Send an Inmate Money
- Write to an Inmate
- Visit an Inmate
- Register for Victim Notification
- Submit a Public Records Request

**Resources**

- Contact Us
- Media Releases
- Open Government Information

**Special Programs**

- Beekeeping Programs
- Second Chance Farm - Horse Programs
- Inmate Dog Adoption Programs
- Corrections Foundation

