



James V. Crosby, Jr.
Secretary

FLORIDA DEPARTMENT OF CORRECTIONS

INMATE ESCAPES

Fiscal Year 2002-2003



- Fiscal Year 2002-2003
 - Attempts
 - Escapes
 - Recaptures
- Short-term trends in Inmate Escapes
- Long-term trends in Inmate Escapes for Fiscal Years 1989-90 to 2002-03

Prepared by:
Florida Department of Corrections
Bureau of Research and Data Analysis
Inmate Information and Analysis Section
July 2003

Inmate Escape Report

(Fiscal Year 2002-2003)

This report provides information for the Fiscal Year (July - June) of 2002-2003 in reference to attempted escapes, escapes and recaptures from Florida's correctional facilities. This report summarizes the following:

- * Attempted escapes**
- * Escapes by level, facility type, and facility type by region**
- * Recaptures and recaptures within quarter, by time to recapture, and time to recapture, by facility type**
- * Escape rates by region, and facility type by region**
- * Escapes by facility, facility type, and facility type by region**
- * Escapes by facility type, by month**
- * Escape rates by region by quarter**
- * Escapes FY 1989-1990 to FY 2002-2003**
- * Escape rates per 1,000 inmates for all facilities and for correctional institutions
FY 1989-1990 to FY 2002-2003**

For purposes of this report attempted escape and escape are defined as follows:

Attempted escape: Inmate is apprehended before completion of the escape act.

Escape: Unauthorized absence from the designated facility boundary or absence from any official assignment outside this boundary.

An escape will be further defined as one of the following levels:

Level I: Escape from non-secure environment such as a community correctional center or an outside work squad, in which no Level III behaviors are exhibited.

Level II: Escape from a secure perimeter in which no Level III behaviors are exhibited.

Level III: Escape that involves hostages, weapons/tools, outside assistance, or violence during or after the escape.

A perimeter escape is defined as one initiated from inside the perimeter of a correctional facility other than a community release facility.

A perimeter escape is defined as an escape initiated from inside the perimeter of a correctional facility other than a community

Summary:

The number of escapes increased from FY 2001-2002 (63) to 75 for FY 2002-2003. The majority of these escapes were from work release/contract centers (93.3%) and were Level 1 escapes (98.7%), the least serious type. There was only 1 escape from a correctional institution and this was a walk-a-way from a work squad. There have been no escapes that breached the secure perimeter of a correctional facility in the past 3 fiscal years.

The overall escape rate rose slightly from 0.87 in FY 2001-2002 to 1.0 for FY 2002-2003. The escape rate for correctional institutions declined from 0.03 in FY 2001-2002 to 0.02 in FY 2002-2003.

Of the 75 completed escapes, 67 (89.3%) were recaptured to date of this report. Over 90% of these were recaptured within the quarter in which the escape occurred and more than half of these (59.0%) were recaptured within 24 hours of the escape.

There were 16 attempted and foiled escapes from Florida's correctional facilities. 14 (87.5%) of these were from correctional institutions.

Escapes (July 2002- June 2003)

Escapes*	1st Quarter (Jul-Sep 2002)		2nd Quarter (Oct-Dec 2002)		3rd Quarter (Jan-Mar 2003)		4th Quarter (Apr-Jun 2003)		Fiscal Year 2002/2003	
Escapes	15		21		16		23		75	
Perimeter Escapes	0		0		0		0		0	
Level										
Level I	15	100.0%	21	100.0%	15	93.8%	23	100.0%	74	98.7%
Level II	0	0.0%	0	0.0%	0	0.0%	0	0.0%	0	0.0%
Level III	0	0.0%	0	0.0%	1	6.3%	0	0.0%	1	1.3%
Not Rated	0	0.0%	0	0.0%	0	0.0%	0	0.0%	0	0.0%
Facility Type										
Correctional Institutions	0	0.0%	0	0.0%	1	6.3%	0	0.0%	1	1.3%
Work Camps/Road Prisons	2	13.3%	0	0.0%	1	6.3%	1	4.3%	4	5.3%
Work Release/Contract Centers	13	86.7%	21	100.0%	14	87.5%	22	95.7%	70	93.3%
Facility Type by Region										
Correctional Institutions	0	0.0%	0	0.0%	1	6.3%	0	0.0%	1	1.3%
Region I	0	0.0%	0	0.0%	0	0.0%	0	0.0%	0	0.0%
Region II	0	0.0%	0	0.0%	0	0.0%	0	0.0%	0	0.0%
Region III	0	0.0%	0	0.0%	0	0.0%	0	0.0%	0	0.0%
Region IV	0	0.0%	0	0.0%	1	100.0%	0	0.0%	1	100.0%
Work Camps/Road Prisons	2	13.3%	0	0.0%	1	6.3%	1	4.3%	4	5.3%
Region I	1	50.0%	0	0.0%	0	0.0%	0	0.0%	1	25.0%
Region II	1	50.0%	0	0.0%	1	100.0%	0	0.0%	2	50.0%
Region III	0	0.0%	0	0.0%	0	0.0%	1	100.0%	1	25.0%
Region IV	0	0.0%	0	0.0%	0	0.0%	0	0.0%	0	0.0%
Work Release/Contract Centers	13	86.7%	21	100.0%	14	87.5%	22	95.7%	70	93.3%
Region I	1	7.7%	5	23.8%	2	14.3%	0	0.0%	8	11.4%
Region II	2	15.4%	2	9.5%	4	28.6%	6	27.3%	14	20.0%
Region III	1	7.7%	3	14.3%	3	21.4%	8	36.4%	15	21.4%
Region IV	9	69.2%	11	52.4%	5	35.7%	8	36.4%	33	47.1%

*Numbers may differ from previous reports as facilities may change types across time and the number and level of escape may be updated upon receipt of further information.

Recaptures (July 2002 - June 2003)

Recaptures*	1st Quarter (Jul-Sep 2002)		2nd Quarter (Oct-Dec 2002)		3rd Quarter (Jan-Mar 2003)		4th Quarter (Apr-Jun 2003)		Fiscal Year 2002/2003	
Escapes	15		21		16		23		75	
Recaptured	15	100.0%	17	81.0%	15	93.8%	20	87.0%	67	89.3%
Not Recaptured	0	0.0%	4	19.0%	1	6.3%	3	13.0%	8	10.7%
Recaptured Within Quarter	15	100.0%	15	88.2%	12	80.0%	19	95.0%	61	91.0%
Time to Recapture										
Less Than or Equal To 24 Hours	9	60.0%	6	40.0%	7	58.3%	14	73.7%	36	59.0%
Greater Than 24 hours	6	40.0%	9	60.0%	5	41.7%	5	26.3%	25	41.0%
Recaptures by Facility Type										
Correctional Institutions	0	0.0%	0	0.0%	1	8.3%	0	0.0%	1	1.6%
Less Than or Equal To 24 Hours	0	0.0%	0	0.0%	1	100.0%	0	0.0%	1	100.0%
Greater Than 24 Hours	0	0.0%	0	0.0%	0	0.0%	0	0.0%	0	0.0%
Work Camps/Road Prisons	2	13.3%	0	0.0%	1	8.3%	1	5.3%	4	6.6%
Less Than or Equal To 24 Hours	1	50.0%	0	0.0%	0	0.0%	1	100.0%	2	50.0%
Greater Than 24 Hours	1	50.0%	0	0.0%	1	100.0%	0	0.0%	2	50.0%
Work Release/Contract Centers	13	86.7%	15	100.0%	10	83.3%	18	94.7%	56	91.8%
Less Than or Equal To 24 Hours	8	61.5%	6	40.0%	6	60.0%	13	72.2%	33	58.9%
Greater Than 24 Hours	5	38.5%	9	60.0%	4	40.0%	5	27.8%	23	41.1%

**The Recaptured/ Not Recaptured categories may change over time as past escapes are recaptured.
Breakdown of recaptured information is based on those escapes recaptured within the quarter in which the escape occurred.

Escape Rates (July 2002- June 2003)

Escape Rate by Region*	1st Quarter (Jul-Sep 2002)	2nd Quarter (Oct-Dec 2002)	3rd Quarter (Jan-Mar 2003)	4th Quarter (Apr-Jun 2003)	Fiscal Year 2002/2003
Escapes	15	21	16	23	75
Escape Rate	0.20	0.28	0.21	0.30	1.0
Region					
Region I	0.09	0.23	0.09	0.00	0.41
Region II	0.15	0.10	0.24	0.27	0.76
Region III	0.06	0.19	0.19	0.57	1.02
Region IV	0.55	0.66	0.36	0.48	2.05
Facility Type by Region					
Correctional Institutions	0.00	0.00	0.02	0.00	0.02
Region I	0.00	0.00	0.00	0.00	0.00
Region II	0.00	0.00	0.00	0.00	0.00
Region III	0.00	0.00	0.00	0.00	0.00
Region IV	0.00	0.00	0.07	0.00	0.07
Work Camps/Road Prisons	0.21	0.00	0.10	0.10	0.40
Region I	0.32	0.00	0.00	0.00	0.29
Region II	0.39	0.00	0.37	0.00	0.75
Region III	0.00	0.00	0.00	0.46	0.47
Region IV	0.00	0.00	0.00	0.00	0.00
Work Release/Contract Centers	5.44	8.79	5.85	9.33	29.39
Region I	3.42	17.06	7.02	0.00	27.68
Region II	5.06	5.10	10.26	16.48	36.36
Region III	1.28	3.85	0.87	10.34	19.31
Region IV	9.76	11.90	5.32	8.59	35.52

*Escape rate defined as the number of escapes/(total population on the last day of the month for each month in the quarter/3)*1,000.

Escapes by Region/Facility

(July 2002 - June 2003)

Region 1

Region/Institution	1st Quarter (Jul-Sep 2002)	2nd Quarter (Oct-Dec 2002)	3rd Quarter (Jan-Mar 2003)	4th Quarter (Apr-Jun 2003)	Fiscal Year 2002/2003
Total Escapes	15	21	16	23	75
Region 1	2	5	2	0	9
Correctional Institutions	0	0	0	0	0
101-Apalachee West CI					
102-Apalachee East CI					
103-Jefferson CI					
104-Jackson CI					
105-Calhon CI					
106-Century CI					
107-Holmes CI					
108-Walton CI					
109-Gulf CI					
110-Washington CI					
111-Gadsden CI (Private)					
112-Bay CF (Private)					
115-Okaloosa CI					
118-Wakulla CI					
119-Santa Rosa CI					
120-Liberty CI					
139-Quincy CI					
150-Gulf CI West Unit					
Work Camps/Road Prisons	1	0	0	0	1
114-River Junction Work Camp					
121-Liberty Work Camp					
134-Tallahassee Road Prison					
160-Graceville Work Camp	1				1
136-Caryville Work Camp					
161-Okaloosa Work Camp					
162-Holmes Work Camp					
163-Calhoun Work Camp					
166-Jackson Work Camp					
167-Century Work Camp					
170-Gulf Forestry Camp					
171-Franklin Work Camp					
172-Walton Work Camp					
177-Berrydale Forestry Camp					
Work Release/Contract Centers	1	5	2	0	8
156-Marianna WRC					
163-Panama City WRC	1				1
164-Pensacola WRC		2	1		3
168-Tallahassee WRC		3	1		4
187-Shisa House West					
173-Wakulla WRC					

Escapes by Region/Facility (July 2002 - June 2003)

Region 2

Region/Institution	1st Quarter (Jul-Sep 2002)	2nd Quarter (Oct-Dec 2002)	3rd Quarter (Jan-Mar 2003)	4th Quarter (Apr-Jun 2003)	Fiscal Year 2002/ 2003
Total Escapes	15	21	16	23	75
Region 2	3	2	5	6	16
Correctional Institutions	0	0	0	0	0
201-Columbia CI					
205-Florida State Prison Main Unit					
206-New River CI West					
208-RMC West Unit					
209-RMC Main Unit					
210-New River CI East					
211-Cross City CI					
212-Mayo CI					
213-Union CI					
214-Putnam CI					
215-Hamilton CI					
218-Taylor CI					
219-Lake City CF (Private)					
224- Taylor Annex					
250-Hamilton CI Annex					
255-Lawtey CI					
277-Gainesville CI					
279-Baker CI					
281-Lancaster CI					
216-Madison CI					
Work Camps/Road Prisons	1	0	1	0	2
204-Florida State Prison Work Camp					
240-Gainesville Work Camp					
261-Baker Work Camp					
262-Cross City Work Camp					
263-Hamilton Work Camp	1				1
264-Columbia Work Camp					
265-Mayo Work Camp			1		1
280-Lancaster Work Camp					
289-Madison Work Camp					
Work Release/ Contract Centers	2	2	4	6	14
242- Daytona WRC					
243-Dinsmore WRC	1		3	4	8
249-Lake City WRC					
266-Sante Fe WRC	1	2	1	2	6
278-Shisa House East					

Escapes by Region/Facility (July 2002 - June 2003)

Region 3

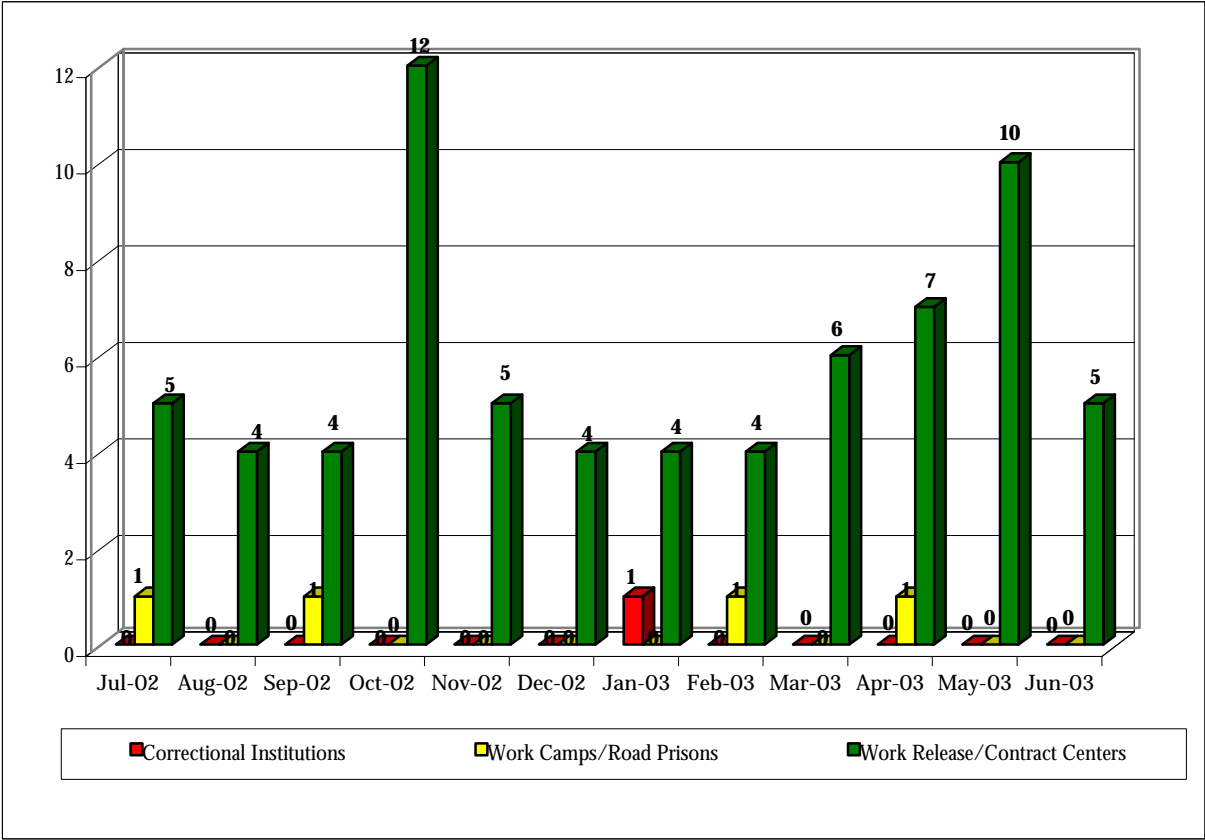
Region/Institution	1st Quarter (Jul-Sep 2002)	2nd Quarter (Oct-Dec 2002)	3rd Quarter (Jan-Mar 2003)	4th Quarter (Apr-Jun 2003)	Fiscal Year 2002/2003
Total Escapes	15	21	16	23	75
Region 3	1	3	3	9	16
Correctional Institutions	0	0	0	0	0
282-Tomoka CI					
304-Marion CI					
307-Sumter CI					
308-Sumter BTU Boot Camp					
310-Brevard CI					
312-Lake CI					
314-Lowell CI Women's Unit					
320-Central Florida Reception Center Main					
321-Central Florida Reception Center East					
323-Central Florida Reception Center South					
336-Hernando CI					
366-Lowell CI Boot Camp					
367-Lowell Annex					
503-Avon Park CI					
529-Hillsborough CI					
573-Zephyrhills CI					
580-Polk CI					
Work Camps/Road Prisons	0	0	0	1	1
284-Tomoka Work Camp					
287-Levy Forestry Camp					
363-Brevard Work Camp				1	
364-Marion Work Camp					
365-Sumter Work Camp					
504-Avon Park Work Camp					
552-Largo Work Camp					
562-Polk Work Camp					
Work Release/Contract Centers	1	3	3	8	15
242-Daytona WRC					
285-Reality House					
341-Cocoa WRC					
361-Orlando WRC					
374-Kissimmee WRC				2	2
540-Bartow WRC					
554-Pinellas WRC			1	1	2
572-Tarpon Springs WRC		1	1		2
583-St. Petersburg WRC	1	2	1	5	9

Escapes by Region/Facility (July 2002 - June 2003)

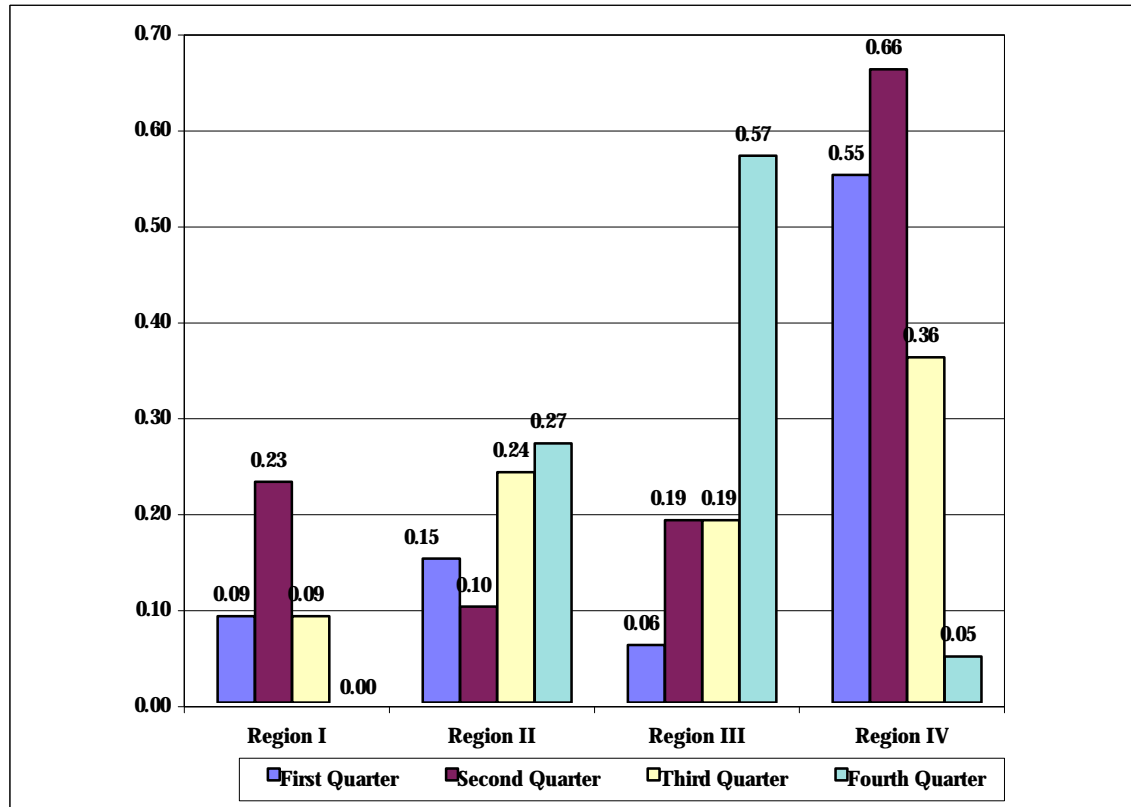
Region 4

Region/Institution	1st Quarter (Jul-Sep 2002)	2nd Quarter (Oct-Dec 2002)	3rd Quarter (Jan-Mar 2003)	4th Quarter (Apr-Jun 2003)	Fiscal Year 2002/2003
Total Escapes	15	21	16	23	75
Region 4	9	11	6	8	34
Correctional Institutions	0	0	1	0	1
401-Everglades CI					
402-South Florida Reception Center Main					
403-SFRC Sout Unit					
404-Okeechobee CI					
405-South Bay CF (Private)					
406-Glades CI					
418-Indian River CI					
419-Dade CI					
430-Martin CI					
463-Dade Annex			1		1
475-Broward CI					
501-Hardee CI					
510-Charlotte CI					
511-Moore Haven CF (Private)					
564-DeSoto CI Annex					
576-Hendry CI					
Work Camps/Road Prisons	0	0	0	0	0
420-Martin Work Camp					
426-Big Pine Key Road Prison					
431-Loxahatchee Road Prison					
462-Glades Work Camp					
525-Arcadia Road Prison					
544-Ft. Meyers Work Camp					
560-DeSoto Work Camp					
561-Hendry Work Camp					
563-Hardee Work Camp					
Work Release/Contract Centers	9	11	5	8	33
444-Ft. Pierce WRC				1	1
446-Hollywood WRC		1			1
452-Atlantic WRC				1	1
457-Miami North WRC	1	2	1	2	6
465-Pompano Beach WRC	8	5	4	2	19
469-West Palm WRC					
473-Opa Locka WRC				2	5
481- Martin Unit TC		3			
578-Bradenton WRC					

Escapes by Facility Type, by Month (July 2002 - June 2003)

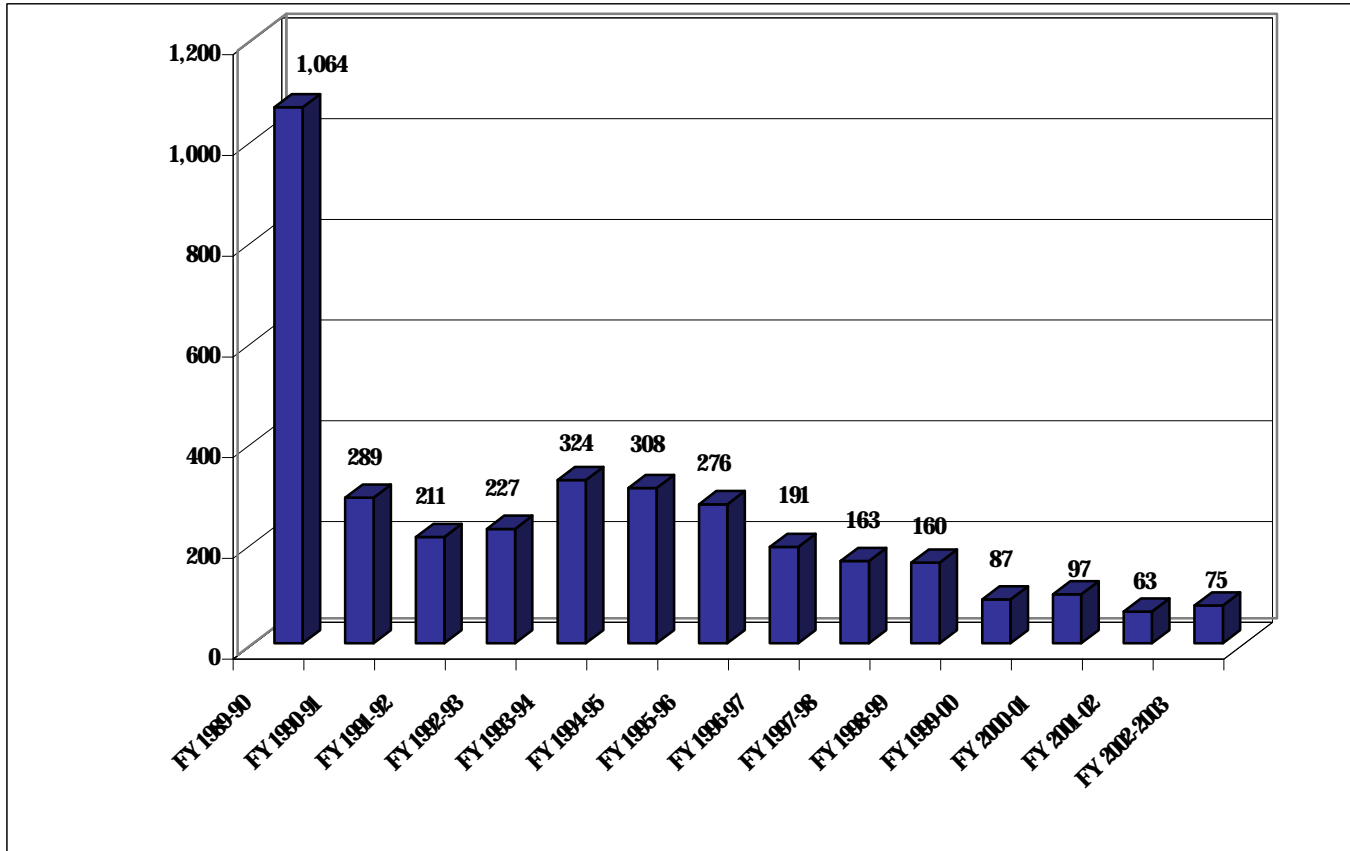


Escape Rate by Region, by Quarter (July 2002 - June 2003)



Total Escapes

(FY 1989-1990 to FY 2002-2003)



Escape Rates Per 1,000 Inmates

All Facilities

(FY 1989-1990 to FY 2002-2003)

Fiscal Year	Number of Escapes	Average Inmate Population*	Escapes Per 1,000 Inmates
1989-90	1,064	40,396	26.34
1990-91	289	44,483	6.50
1991-92	211	46,622	4.53
1992-93	227	48,808	4.65
1993-94	324	53,594	6.05
1994-95	308	59,022	5.22
1995-96	276	63,163	4.37
1996-97	191	64,242	2.97
1997-98	163	65,234	2.50
1998-99	160	67,227	2.38
1999-00	87	69,782	1.25
2000-01	97	71,476	1.36
2001-02	63	72,485	0.87
2002-03	75	75,162	1.00

Correctional Institutions

(FY 1993-1994 to FY 2002-2003)

Fiscal Year	Number of Escapes	Average Inmate Population*	Escapes Per 1,000 Inmates
1994-95	37	47,266	0.78
1995-96	13	50,006	0.26
1996-97	9	53,670	0.19
1997-98	8	54,573	0.15
1998-99	4	56,135	0.07
1999-00	9	58,607	0.15
2000-01	4	60,268	0.07
2001-02	2	60,813	0.03
2002-03	1	62,957	0.02

*Inmate population average based on (four quarters population on last day of each month)/4.

The Florida Department of Corrections
Bureau of Research and Data Analysis
Direct questions to Maria Toscano or Bill Bales
or email us at: Toscano.Maria@mail.dc.state.fl.us
(850) 488-1801 SC 278-1801
2601 Blair Stone Road
Tallahassee, Florida 32399-2500