



Sentencing Scoresheet Compliance Report

July 1, 2002 - June 30, 2003

first | previous | 1 of 7 | next
subject index

Sentencing Scoresheet Compliance Report

October 2003



Executive Summary

This report is in fulfillment of 921.002(4)(c) Florida Statutes, which mandates that the Florida Department of Corrections shall, no later than October 1 of each year, provide the Legislature with a sentencing scoresheet compliance report. This report details the compliance of each judicial circuit in submitting to the Department sentencing scoresheets for offenders convicted of felonies between July 1, 2002 and June 30, 2003.

Included in this report is the following information:

1. Using FY2002-03 commitments to the Department of Corrections as a baseline for comparing scoresheet submissions, a compliance rate is provided for each judicial circuit and county. Commitments include all felons convicted and sentenced to state prison, probation or community control as well as modifications to and revocations of supervision. Scoresheets reported are those received through September 1, 2003. The statewide rate of compliance for this time period is 71.1%.
2. For scoresheets received with sentence dates during FY2002-03 (including those with non-department sanctions), county, circuit and region totals are provided.
3. Circuit and county totals for scoresheets with FY2002-03 sentence dates are listed according to most severe type of sanction. Of the 114,821 scoresheets received, 24,620 (21.4%) had a state prison sanction, 62,376 (54.3%) received a community supervision sanction and 26,172 (22.8%) received a county jail sanction.

The methodology for identifying missing scoresheets and calculating the compliance rate is described below:

- Consider all sentencing events (including new admissions, revocations and modifications) and compare them to the sentencing scoresheets received for each offender. There are three possible outcomes: the sentencing event matches the scoresheet, there is no scoresheet to match the sentencing event or there is a scoresheet but no record of a sentencing event. The compliance rate is then calculated by adding together the first two options (resulting in the total number of sentencing events) and comparing it to the number of scoresheets that match.

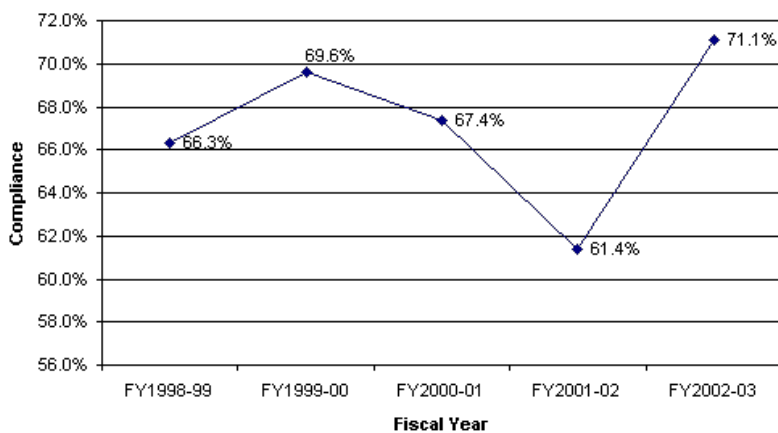
Note: The sentencing scoresheet database is dynamic in that it is constantly being updated. Every effort is made to include scoresheets that are received, however, there is a lag in data entry. While this lag time is generally less than 45 days it may exceed this in some of the larger circuits. As such, as more time is allowed for the data to mature, a more accurate and complete picture of the data may be presented.

Scoresheet Preparation

Beginning on July 1, 2001 Florida Statute 921.0024(3) gave sole responsibility for the preparation of scoresheets to the State Attorney. Previously this responsibility had been shared between the Department of Corrections and the State Attorney.

Note: No scoresheets were received from Franklin, Gulf, Lafayette and Wakulla Counties with sentence dates during FY2002-03.

Sentencing Scoresheet Compliance Over 5 Years



Heggs V. State

In February 2000, the Florida Supreme Court, in its review of Curtis Leon Heggs, determined Chapter Law 95-184 to be unconstitutional due to a violation of the single subject rule of the Florida Constitution. This Chapter Law contained substantial changes in sentencing law referred commonly to as the "1995 Sentencing Guidelines."

In some cases, the 1995 Sentencing Guidelines provided for greater punishment than the 1994 Sentencing Guidelines. Some enhancements were made to the Guidelines, designed primarily to target offenders with more serious current or prior criminal records. There were a significant number of changes and the nature of the changes provided for significant effects for some offenders. However, many offenders sentenced under the 1995 Guidelines would have scored identically under the 1994 version of the law.

In May 2000, the Supreme Court revised and finalized their opinion in this case and further clarified who is eligible for re-sentencing. This decision stated that "only those persons adversely affected by the amendments made by Chapter Law 95-184 may rely on our decision here to obtain relief. Stated another way, in the guidelines context, we determine that if a person's sentence imposed under the 1995 Guidelines could have been imposed under the 1994 Guidelines (without a departure), then that person shall not be entitled to relief. "

The Supreme Court declined to rule in Heggs as to when the window period closed for offenders claiming their guidelines sentences are invalid due to the amendments contained in Chapter Law 95-184. However, in its review of Xzavier Trapp, the Supreme Court determined that the window period for challenging the Sentencing Guidelines provisions amended in Chapter Law 95-184 opened in October 1, 1995 and closed on May 24, 1997.

Approximately 192,267 sentencing events occurred under the 1995 sentencing structure for offenses committed between October 1, 1995 and May 24, 1997, based on the Guidelines scoresheets received by the Department of Corrections through February 29, 2000. Original analysis indicated that 73,467 of these sentencing events evidenced scores adversely affected by the changes brought about in the 1995 guidelines. This analysis did not determine that the 1995 sentence was outside the range of the 1994 sentence, only that the scoresheet calculation reflected a difference in points.

Due to the potential number of re-sentencing events, it would be inaccurate to attempt to analyze and compare the 1995 sentencing guidelines to other versions of the sentencing scoresheet. As re-sentencing events occur, the original 1995 scoresheet will be replaced in the database with a 1994 scoresheet. This is necessary because the re-sentencing invalidates the original sentencing event. Likewise, the new sentence will overwrite the original sentence in DOC sentence structure and databases. A computerized record of the original sentence is not kept in the database that is used for data analysis.

As such, it is not possible to determine which scoresheets are the result of a re-sentencing or to verify that a re-sentencing event was a result of the Heggs ruling. Therefore, any analysis of this time period would yield a mixture of offenders sentenced under both the 1994 and 1995 guidelines.

For the analysis of the compliance rates, we are excluding all scoresheets with offense dates that occur from October 1, 1995 through May 24, 1997 (less than 2% of all scoresheets received).

Table of Contents

- [Scoresheets Received Compared with Admissions to the Department of Corrections by Judicial Circuit](#)
- [Scoresheets Received Compared with Admissions to the Department of Corrections by County](#)
- [Scoresheets Received by Region/ Judicial Circuit](#)
- [Scoresheets Received by County](#)
- [Sanctions Imposed by Judicial Circuit](#)
- [Sanctions Imposed by County](#)

Questions regarding this report should be directed to [Stacey Anderson](#), Florida Department of Corrections, Bureau of Research and Data Analysis, 2601 Blair Stone Road, Tallahassee, Florida 32399-2500 or by phone at (850) 488-1801.

Information For...

- Media
- Inmate/Offender Families
- Victims
- Students

Publications

- Recidivism Report
- Annual Report
- Annual Substance Abuse Reports

Orgs & Offices

- Office of the Secretary
- Organization
- Organization Charts
- Statewide Facility Directory

How Do I...

- Pay Court Ordered Payments
- Call an Inmate
- File a Complaint

Resources

- Contact Us
- Media Releases
- Open Government Information



Scoresheets Received Compared with Admissions* to the Department of Corrections

(Scoresheets Received through September 1, 2003 for Offenders Sentenced between July 1, 2002 and June 30, 2003)**

Judicial Circuit	Supervision Admissions			Prison Admissions			All Admissions		
	Total	With Scoresheets		Total	With Scoresheets		Total	With Scoresheets	
1 (Pensacola)	4,948	3,348	67.7%	1,469	1,079	73.5%	6,417	4,427	69.0%
2 (Tallahassee)	3,819	1,364	35.7%	1,016	476	46.9%	4,835	1,840	38.1%
3 (Lake City)	1,676	522	31.1%	420	165	39.3%	2,096	687	32.8%
4 (Jacksonville)	3,145	2,413	76.7%	1,746	1,588	91.0%	4,891	4,001	81.8%
5 (Tavares)	5,506	4,456	80.9%	1,047	827	79.0%	6,553	5,283	80.6%
6 (Clearwater)	9,229	8,473	91.8%	2,129	2,025	95.1%	11,358	10,498	92.4%
7 (Daytona)	4,548	2,737	60.2%	1,497	1,120	74.8%	6,045	3,857	63.8%
8 (Gainesville)	2,713	1,937	71.4%	602	454	75.4%	3,315	2,391	72.1%
9 (Orlando)	8,451	5,200	61.5%	2,265	1,519	67.1%	10,716	6,719	62.7%
10 (Bartow)	4,970	3,286	66.1%	1,665	896	53.8%	6,635	4,182	63.0%
11 (Miami)	9,310	3,975	42.7%	2,298	1,063	46.3%	11,608	5,038	43.4%
12 (Sarasota)	3,461	2,617	75.6%	746	600	80.4%	4,207	3,217	76.5%
13 (Tampa)	10,674	9,225	86.4%	2,036	1,641	80.6%	12,710	10,866	85.5%
14 (Panama City)	2,830	1,440	50.9%	939	554	59.0%	3,769	1,994	52.9%
15 (West Palm Beach)	3,765	2,694	71.6%	918	722	78.6%	4,683	3,416	72.9%
16 (Key West)	847	343	40.5%	182	62	34.1%	1,029	405	39.4%
17 (Ft. Lauderdale)	10,254	8,205	80.0%	2,729	2,169	79.5%	12,983	10,374	79.9%
18 (Sanford)	4,751	3,127	65.8%	1,062	743	70.0%	5,813	3,870	66.6%
19 (Ft. Pierce)	2,709	2,392	88.3%	1,027	954	92.9%	3,736	3,346	89.6%
20 (Ft. Myers)	5,133	4,688	91.3%	1,119	1,046	93.5%	6,252	5,734	91.7%
Statewide	102,739	72,442	70.5%	26,912	19,703	73.2%	129,651	92,145	71.1%

*Admissions include original sentencing events that result in the offender being remanded to the department as well as modification of sentences and revocations of supervision.

** Excludes offense dates between October 1, 1995 and May 24, 1997.

Note: Scoresheets prepared on an incorrect version of the guidelines due to offense date, or 1995 or subsequent scoresheets lacking judge's signature are not included in total. Also, totals do not include county jail or other sanctions.

Information For...

- Media
- Inmate/Offender Families
- Victims
- Students
- Vendors
- Offenders
- Job Seekers
- Volunteers

Publications

- Recidivism Report
- Annual Report
- Annual Substance Abuse Reports
- Quarterly Escapes Report
- Agency Strategic Plan
- Perimeter Check
- Quick Facts
- Inmate Orientation Handbook: English - Spanish
- More...

Orgs & Offices

- Office of the Secretary
- Organization
- Organization Charts
- Statewide Facility Directory
- Frequently Called Numbers
- Citizens' Services

About Us

- Who Are We?
- Mission
- History of Corrections

How Do I...

- Pay Court Ordered Payments
- Call an Inmate
- File a Complaint
- Send an Inmate Money
- Write to an Inmate
- Visit an Inmate
- Register for Victim Notification
- Submit a Public Records Request

Resources

- Contact Us
- Media Releases
- Open Government Information

Special Programs

- Beekeeping Programs
- Second Chance Farm - Horse Programs
- Inmate Dog Adoption Programs
- Corrections Foundation





Sentencing Scoresheet Compliance Report

July 1, 2002 - June 30, 2003

[first](#) | [previous](#) | [3 of 7](#) | [next](#)

Scoresheets Received Compared with Admissions* to the Department of Corrections

(Scoresheets Received through September 1, 2003 for Offenders Sentenced between July 1, 2002 and June 30, 2003)**

Judicial Circuit Number / County	Supervision Admissions			Prison Admissions			All Admissions		
	Total	With Scoresheets		Total	With Scoresheets		Total	With Scoresheets	
1 Escambia	2,445	2,131	87.2%	928	867	93.4%	3,373	2,998	88.9%
Okaloosa	1,453	677	46.6%	358	101	28.2%	1,811	778	43.0%
Santa Rosa	551	461	83.7%	119	97	81.5%	670	558	83.3%
Walton	499	79	15.8%	64	14	21.9%	563	93	16.5%
2 Franklin	139	0	0.0%	29	0	0.0%	168	0	0.0%
Gadsden	559	404	72.3%	167	125	74.9%	726	529	72.9%
Jefferson	143	10	7.0%	30	3	10.0%	173	13	7.5%
Leon	2,666	919	34.5%	721	341	47.3%	3,387	1,260	37.2%
Liberty	56	31	55.4%	24	7	29.2%	80	38	47.5%
Wakulla	256	0	0.0%	45	0	0.0%	301	0	0.0%
3 Columbia	631	196	31.1%	192	82	42.7%	823	278	33.8%
Dixie	104	39	37.5%	18	17	94.4%	122	56	45.9%
Hamilton	111	5	4.5%	19	4	21.1%	130	9	6.9%
Lafayette	62	0	0.0%	18	0	0.0%	80	0	0.0%
Madison	117	57	48.7%	50	26	52.0%	167	83	49.7%
Suwannee	373	12	3.2%	92	7	7.6%	465	19	4.1%
Taylor	278	213	76.6%	31	29	93.5%	309	242	78.3%
4 Clay	527	487	92.4%	223	212	95.1%	750	699	93.2%
Duval	2,362	1,739	73.6%	1,388	1,261	90.9%	3,750	3,000	80.0%
Nassau	256	187	73.0%	135	115	85.2%	391	302	77.2%
5 Citrus	484	427	88.2%	183	152	83.1%	667	579	86.8%
Hernando	911	782	85.8%	168	145	86.3%	1,079	927	85.9%
Lake	1,489	1,259	84.6%	266	218	82.0%	1,755	1,477	84.2%
Marion	2,429	1,827	75.2%	309	208	67.3%	2,738	2,035	74.3%
Sumter	193	161	83.4%	121	104	86.0%	314	265	84.4%
6 Pasco	2,251	1,776	78.9%	450	379	84.2%	2,701	2,155	79.8%
Pinellas	6,978	6,697	96.0%	1,679	1,646	98.0%	8,657	8,343	96.4%
7 Flagler	188	131	69.7%	75	52	69.3%	263	183	69.6%
Putnam	464	335	72.2%	127	104	81.9%	591	439	74.3%
St. Johns	822	310	37.7%	210	137	65.2%	1,032	447	43.3%
Volusia	3,074	1,961	63.8%	1,085	827	76.2%	4,159	2,788	67.0%
8 Alachua	1,927	1,429	74.2%	386	294	76.2%	2,313	1,723	74.5%
Baker	123	37	30.1%	25	11	44.0%	148	48	32.4%
Bradford	228	164	71.9%	85	74	87.1%	313	238	76.0%
Gilchrist	64	24	37.5%	9	0	0.0%	73	24	32.9%
Levy	291	218	74.9%	71	60	84.5%	362	278	76.8%
Union	80	65	81.3%	26	15	57.7%	106	80	75.5%
9 Orange	6,995	3,889	55.6%	1,912	1,216	63.6%	8,907	5,105	57.3%
Osceola	1,456	1,311	90.0%	353	303	85.8%	1,809	1,614	89.2%
10 Hardee	227	154	67.8%	50	33	66.0%	277	187	67.5%

Highlands	432	161	37.3%	184	70	38.0%	616	231	37.5%
Polk	4,311	2,971	68.9%	1,431	793	55.4%	5,742	3,764	65.6%
11 Miami-Dade	9,310	3,975	42.7%	2,298	1,063	46.3%	11,608	5,038	43.4%
12 Desoto	191	106	55.5%	58	40	69.0%	249	146	58.6%
Manatee	1,640	1,062	64.8%	274	175	63.9%	1,914	1,237	64.6%
Sarasota	1,630	1,449	88.9%	414	385	93.0%	2,044	1,834	89.7%
13 Hillsborough	10,674	9,225	86.4%	2,036	1,641	80.6%	12,710	10,866	85.5%
14 Bay	1,788	1,168	65.3%	591	521	88.2%	2,379	1,689	71.0%
Calhoun	167	73	43.7%	39	10	25.6%	206	83	40.3%
Gulf	86	0	0.0%	42	0	0.0%	128	0	0.0%
Holmes	276	58	21.0%	89	3	3.4%	365	61	16.7%
Jackson	304	63	20.7%	115	13	11.3%	419	76	18.1%
Washington	209	78	37.3%	63	7	11.1%	272	85	31.3%
15 Palm Beach	3,765	2,694	71.6%	918	722	78.6%	4,683	3,416	72.9%
16 Monroe	847	343	40.5%	182	62	34.1%	1,029	405	39.4%
17 Broward	10,254	8,205	80.0%	2,729	2,169	79.5%	12,983	10,374	79.9%
18 Brevard	3,030	2,082	68.7%	692	498	72.0%	3,722	2,580	69.3%
Seminole	1,721	1,045	60.7%	370	245	66.2%	2,091	1,290	61.7%
19 Indian River	599	556	92.8%	247	232	93.9%	846	788	93.1%
Martin	714	601	84.2%	204	180	88.2%	918	781	85.1%
Okeechobee	221	175	79.2%	109	96	88.1%	330	271	82.1%
St. Lucie	1,175	1,060	90.2%	467	446	95.5%	1,642	1,506	91.7%
20 Charlotte	751	716	95.3%	210	196	93.3%	961	912	94.9%
Collier	1,797	1,651	91.9%	319	302	94.7%	2,116	1,953	92.3%
Glades	67	27	40.3%	9	4	44.4%	76	31	40.8%
Hendry	273	218	79.9%	31	24	77.4%	304	242	79.6%
Lee	2,245	2,076	92.5%	550	520	94.5%	2,795	2,596	92.9%
Statewide	102,739	72,442	70.5%	26,912	19,703	73.2%	129,651	92,145	71.1%

*Admissions include original sentencing events that result in the offender being remanded to the department as well as modification of sentences and revocations of supervision.

** Excludes offense dates between October 1, 1995 and May 24, 1997.

Note: Scoresheets prepared on an incorrect version of the guidelines due to offense date, or 1995 or subsequent scoresheets lacking judge's signature are not included in total. Also, totals do not include county jail or other sanctions.

Information For...

- Media
- Inmate/Offender Families
- Victims
- Students
- Vendors
- Offenders
- Job Seekers
- Volunteers

Publications

- Recidivism Report
- Annual Report
- Annual Substance Abuse Reports
- Quarterly Escapes Report
- Agency Strategic Plan
- Perimeter Check
- Quick Facts
- Inmate Orientation Handbook: [English - Spanish](#)
- [More...](#)

Orgs & Offices

- Office of the Secretary
- Organization
- Organization Charts
- Statewide Facility Directory
- Frequently Called Numbers
- Citizens' Services

About Us

- Who Are We?
- Mission
- History of Corrections

How Do I...

- Pay Court Ordered Payments
- Call an Inmate
- File a Complaint
- Send an Inmate Money
- Write to an Inmate
- Visit an Inmate
- Register for Victim Notification
- Submit a Public Records Request

Resources

- Contact Us
- Media Releases
- Open Government Information

Special Programs

- Beekeeping Programs
- Second Chance Farm - Horse Programs
- Inmate Dog Adoption Programs
- Corrections Foundation





Sentencing Scoresheet Compliance Report

July 1, 2002 - June 30, 2003

[first](#) | [previous](#) | **4 of 7** | [next](#)

Scoresheets Received by Region/Judicial Circuit

(Scoresheets Received through September 1, 2003 for Offenders Sentenced between July 1, 2002 and June 30, 2003)*

Region	Scoresheets Received:	
	Number	Percent
Region I		
1 (Pensacola)	5,213	4.5%
2 (Tallahassee)	2,041	1.8%
3 (Lake City)	838	0.7%
4 (Jacksonville)	7,294	6.4%
7 (Daytona)	4,484	3.9%
8 (Gainesville)	3,022	2.6%
14 (Panama City)	2,172	1.9%
Subtotal	25,064	21.8%
Region II		
5 (Tavares)	6,164	5.4%
9 (Orlando)	8,172	7.1%
10 (Bartow)	4,369	3.8%
18 (Sanford)	4,015	3.5%
19 (Ft. Pierce)	4,118	3.6%
Subtotal	26,838	23.4%
Region III		
11 (Miami)	7,973	6.9%
15 (West Palm Beach)	5,794	5.0%
16 (Key West)	465	0.4%
17 (Ft. Lauderdale)	12,582	11.0%
Subtotal	26,814	23.4%
Region IV		
6 (Clearwater)	13,080	11.4%
12 (Sarasota)	4,248	3.7%
13 (Tampa)	11,852	10.3%
20 (Ft. Myers)	6,925	6.0%
Subtotal	36,105	31.4%
GRAND TOTAL	114,821	100.0%

* Total number of scoresheets received by the Department, including those with offense dates between October 1, 1995 and May 24, 1997.

Sentencing Scoresheet Compliance Report

July 1, 2002 - June 30, 2003

[first](#) | [previous](#) | **4 of 7** | [next](#)

Information For...

- Media
- Inmate/Offender Families
- Victims
- Students
- Vendors
- Offenders
- Job Seekers
- Volunteers

Publications

- Recidivism Report
- Annual Report
- Annual Substance Abuse Reports
- Quarterly Escapes Report
- Agency Strategic Plan
- Perimeter Check
- Quick Facts
- Inmate Orientation Handbook: [English](#) - [Spanish](#)

Orgs & Offices

- Office of the Secretary
- Organization
- Organization Charts
- Statewide Facility Directory
- Frequently Called Numbers
- Citizens' Services

About Us

- Who Are We?
- Mission

How Do I...

- Pay Court Ordered Payments
- Call an Inmate
- File a Complaint
- Send an Inmate Money
- Write to an Inmate
- Visit an Inmate
- Register for Victim Notification
- Submit a Public Records

Resources

- Contact Us
- Media Releases
- Open Government Information

Special Programs

- Beekeeping Programs
- Second Chance Farm - Horse Programs
- Inmate Dog Adoption



Sentencing Scoresheet Compliance Report
July 1, 2002 - June 30, 2003[first](#) | [previous](#) | **5 of 7** | [next](#)

Scoresheets Received by County

(Scoresheets Received through September 1, 2003 for Offenders Sentenced between July 1, 2002 and June 30, 2003)*

Judicial Circuit Number/County	Scoresheets Received	
	Number	Percent
1 Escambia	3,666	3.2%
Okaloosa	821	0.7%
Santa Rosa	610	0.5%
Walton	116	0.1%
2 Franklin	-	
Gadsden	577	0.5%
Jefferson	19	0.0%
Leon	1,403	1.2%
Liberty	42	0.0%
Wakulla	-	
3 Columbia	348	0.3%
Dixie	72	0.1%
Hamilton	16	0.0%
Lafayette	-	
Madison	94	0.1%
Suwannee	23	0.0%
Taylor	285	0.2%
4 Clay	1,089	0.9%
Duval	5,735	5.0%
Nassau	470	0.4%
5 Citrus	701	0.6%
Hernando	986	0.9%
Lake	1,855	1.6%
Marion	2,325	2.0%
Sumter	297	0.3%
6 Pasco	2,491	2.2%
Pinellas	10,589	9.2%
7 Flagler	214	0.2%
Putnam	495	0.4%
St. Johns	509	0.4%
Volusia	3,266	2.8%
8 Alachua	2,214	1.9%
Baker	59	0.1%
Bradford	297	0.3%
Gilchrist	26	0.0%
Levy	336	0.3%
Union	90	0.1%
9 Orange	6,217	5.4%
Osceola	1,955	1.7%
10 Hardee	214	0.2%

Highlands	261	0.2%
Polk	3,894	3.4%
11 Miami-Dade	7,973	6.9%
12 Desoto	199	0.2%
Manatee	1,581	1.4%
Sarasota	2,468	2.1%
13 Hillsborough	11,852	10.3%
14 Bay	1,864	1.6%
Calhoun	84	0.1%
Gulf	-	
Holmes	64	0.1%
Jackson	71	0.1%
Washington	89	0.1%
15 Palm Beach	5,794	5.0%
16 Monroe	465	0.4%
17 Broward	12,582	11.0%
18 Brevard	2,568	2.2%
Seminole	1,447	1.3%
19 Indian River	959	0.8%
Martin	948	0.8%
Okeechobee	340	0.3%
St. Lucie	1,871	1.6%
20 Charlotte	1,014	0.9%
Collier	2,296	2.0%
Glades	65	0.1%
Hendry	283	0.2%
Lee	3,267	2.8%
Statewide	114,821	100.0%

* Total number of scoresheets received by the Department, including those with offense dates between October 1, 1995 and May 24, 1997.

Information For...

- [Media](#)
- [Inmate/Offender Families](#)
- [Victims](#)
- [Students](#)
- [Vendors](#)
- [Offenders](#)
- [Job Seekers](#)
- [Volunteers](#)

Publications

- [Recidivism Report](#)
- [Annual Report](#)
- [Annual Substance Abuse Reports](#)
- [Quarterly Escapes Report](#)
- [Agency Strategic Plan](#)
- [Perimeter Check](#)
- [Quick Facts](#)
- [Inmate Orientation Handbook: English - Spanish](#)
- [More...](#)

Orgs & Offices

- [Office of the Secretary](#)
- [Organization](#)
- [Organization Charts](#)
- [Statewide Facility Directory](#)
- [Frequently Called Numbers](#)
- [Citizens' Services](#)

About Us

- [Who Are We?](#)
- [Mission](#)
- [History of Corrections](#)

How Do I...

- [Pay Court Ordered Payments](#)
- [Call an Inmate](#)
- [File a Complaint](#)
- [Send an Inmate Money](#)
- [Write to an Inmate](#)
- [Visit an Inmate](#)
- [Register for Victim Notification](#)
- [Submit a Public Records Request](#)

Resources

- [Contact Us](#)
- [Media Releases](#)
- [Open Government Information](#)

Special Programs

- [Beekeeping Programs](#)
- [Second Chance Farm - Horse Programs](#)
- [Inmate Dog Adoption Programs](#)
- [Corrections Foundation](#)



Sanctions by Judicial Circuit

(Scoresheets Received through September 1, 2003 for Offenders Sentenced between July 1, 2002 and June 30, 2003)*

Judicial Circuit	Sanction on Scoresheet										Total	
	County Jail		Probation		Community Control		State Prison		Other Disposition**			
1 (Pensacola)	1,039	19.9%	2,153	41.3%	596	11.4%	1,336	25.6%	89	1.7%	5,213	4.5%
2 (Tallahassee)	255	12.5%	1,020	50.0%	117	5.7%	635	31.1%	14	0.7%	2,041	1.8%
3 (Lake City)	68	8.1%	328	39.1%	126	15.0%	244	29.1%	72	8.6%	838	0.7%
4 (Jacksonville)	3,399	46.6%	1,659	22.7%	263	3.6%	1,929	26.4%	44	0.6%	7,294	6.4%
5 (Tavares)	1,272	20.6%	3,171	51.4%	528	8.6%	1,015	16.5%	178	2.9%	6,164	5.4%
6 (Clearwater)	2,744	21.0%	6,804	52.0%	692	5.3%	2,566	19.6%	274	2.1%	13,080	11.4%
7 (Daytona)	725	16.2%	1,978	44.1%	418	9.3%	1,341	29.9%	22	0.5%	4,484	3.9%
8 (Gainesville)	424	14.0%	1,565	51.8%	227	7.5%	601	19.9%	205	6.8%	3,022	2.6%
9 (Orlando)	2,148	26.3%	3,626	44.4%	517	6.3%	1,813	22.2%	68	0.8%	8,172	7.1%
10 (Bartow)	650	14.9%	2,045	46.8%	517	11.8%	1,150	26.3%	7	0.2%	4,369	3.8%
11 (Miami)	3,030	38.0%	3,293	41.3%	409	5.1%	1,241	15.6%	0	0.0%	7,973	6.9%
12 (Sarasota)	1,168	27.5%	1,905	44.8%	374	8.8%	748	17.6%	53	1.2%	4,248	3.7%
13 (Tampa)	2,012	17.0%	5,413	45.7%	2,064	17.4%	2,178	18.4%	185	1.6%	11,852	10.3%
14 (Panama City)	115	5.3%	976	44.9%	375	17.3%	683	31.4%	23	1.1%	2,172	1.9%
15 (West Palm Beach)	2,385	41.2%	2,430	41.9%	88	1.5%	863	14.9%	28	0.5%	5,794	5.0%
16 (Key West)	51	11.0%	277	59.6%	42	9.0%	74	15.9%	21	4.5%	465	0.4%
17 (Ft. Lauderdale)	2,432	19.3%	6,390	50.8%	932	7.4%	2,739	21.8%	89	0.7%	12,582	11.0%
18 (Sanford)	155	3.9%	2,355	58.7%	570	14.2%	935	23.3%	0	0.0%	4,015	3.5%
19 (Ft. Pierce)	747	18.1%	1,770	43.0%	318	7.7%	1,188	28.8%	95	2.3%	4,118	3.6%
20 (Ft. Myers)	1,353	19.5%	3,291	47.5%	754	10.9%	1,341	19.4%	186	2.7%	6,925	6.0%
Statewide	26,172	22.8%	52,449	45.7%	9,927	8.6%	24,620	21.4%	1,653	1.4%	114,821	100.0%

Note: County jail includes time served and state prison includes life sentences.

* Total number of scoresheets received by the Department, including those with offense dates between October 1, 1995 and May 24, 1997.

** "Other Disposition" includes fines, county and non-reporting probation, termination of probation and re-instatement to probation.

Information For...

- Media
- Inmate/Offender Families
- Victims
- Students
- Vendors
- Offenders
- Job Seekers
- Volunteers

Publications

- Recidivism Report
- Annual Report
- Annual Substance Abuse Reports
- Quarterly Escapes Report
- Agency Strategic Plan
- Perimeter Check
- Quick Facts
- Inmate Orientation Handbook: [English - Spanish](#)
- More...

Orgs & Offices

- Office of the Secretary
- Organization
- Organization Charts
- Statewide Facility Directory
- Frequently Called Numbers
- Citizens' Services

About Us

- Who Are We?
- Mission
- History of Corrections

How Do I...

- Pay Court Ordered Payments
- Call an Inmate
- File a Complaint
- Send an Inmate Money
- Write to an Inmate
- Visit an Inmate
- Register for Victim Notification
- Submit a Public Records Request

Resources

- Contact Us
- Media Releases
- Open Government Information

Special Programs

- Beekeeping Programs
- Second Chance Farm - Horse Programs
- Inmate Dog Adoption Programs
- Corrections Foundation





Sentencing Scoresheet Compliance Report

July 1, 2002 - June 30, 2003

[first](#) | [previous](#) | [7 of 7](#) | [next](#)

Sanctions by County

(Scoresheets Received through September 1, 2003 for Offenders Sentenced between July 1, 2002 and June 30, 2003)*

Judicial Circuit Number / County	Sanction on Scoresheet										Total	
	County Jail		Probation		Community Control		State Prison		Other Disposition**			
1 Escambia	778	21.2%	1,361	37.1%	369	10.1%	1,091	29.8%	67	1.8%	3,666	3.2%
Okaloosa	96	11.7%	470	57.2%	132	16.1%	117	14.3%	6	0.7%	821	0.7%
Santa Rosa	157	25.7%	257	42.1%	79	13.0%	104	17.0%	13	2.1%	610	0.5%
Walton	8	6.9%	65	56.0%	16	13.8%	24	20.7%	3	2.6%	116	0.1%
2 Franklin	0		0		0		0		0		0	
Gadsden	29	5.0%	360	62.4%	30	5.2%	158	27.4%	0	0.0%	577	0.5%
Jefferson	0	0.0%	14	73.7%	0	0.0%	5	26.3%	0	0.0%	19	0.0%
Leon	224	16.0%	615	43.8%	87	6.2%	463	33.0%	14	1.0%	1,403	1.2%
Liberty	2	4.8%	31	73.8%	0	0.0%	9	21.4%	0	0.0%	42	0.0%
Wakulla	0		0		0		0		0		0	
3 Columbia	24	6.9%	129	37.1%	47	13.5%	119	34.2%	29	8.3%	348	0.3%
Dixie	9	12.5%	28	38.9%	6	8.3%	23	31.9%	6	8.3%	72	0.1%
Hamilton	3	18.8%	5	31.3%	0	0.0%	8	50.0%	0	0.0%	16	0.0%
Lafayette	0		0		0		0		0		0	
Madison	13	13.8%	33	35.1%	10	10.6%	28	29.8%	10	10.6%	94	0.1%
Suwannee	0	0.0%	5	21.7%	2	8.7%	16	69.6%	0	0.0%	23	0.0%
Taylor	19	6.7%	128	44.9%	61	21.4%	50	17.5%	27	9.5%	285	0.2%
4 Clay	424	38.9%	346	31.8%	43	3.9%	265	24.3%	11	1.0%	1,089	0.9%
Duval	2,849	49.7%	1,150	20.1%	186	3.2%	1,522	26.5%	28	0.5%	5,735	5.0%
Nassau	126	26.8%	163	34.7%	34	7.2%	142	30.2%	5	1.1%	470	0.4%
5 Citrus	100	14.3%	342	48.8%	46	6.6%	185	26.4%	28	4.0%	701	0.6%
Hernando	175	17.7%	472	47.9%	155	15.7%	177	18.0%	7	0.7%	986	0.9%
Lake	555	29.9%	815	43.9%	156	8.4%	286	15.4%	43	2.3%	1,855	1.6%
Marion	423	18.2%	1,413	60.8%	152	6.5%	238	10.2%	99	4.3%	2,325	2.0%
Sumter	19	6.4%	129	43.4%	19	6.4%	129	43.4%	1	0.3%	297	0.3%
6 Pasco	305	12.2%	1,199	48.1%	462	18.5%	497	20.0%	28	1.1%	2,491	2.2%
Pinellas	2,439	23.0%	5,605	52.9%	230	2.2%	2,069	19.5%	246	2.3%	10,589	9.2%
7 Flagler	47	22.0%	99	46.3%	11	5.1%	57	26.6%	0	0.0%	214	0.2%
Putnam	69	13.9%	233	47.1%	59	11.9%	121	24.4%	13	2.6%	495	0.4%
St. Johns	42	8.3%	276	54.2%	17	3.3%	174	34.2%	0	0.0%	509	0.4%
Volusia	567	17.4%	1,370	41.9%	331	10.1%	989	30.3%	9	0.3%	3,266	2.8%
8 Alachua	337	15.2%	1,145	51.7%	176	7.9%	377	17.0%	179	8.1%	2,214	1.9%
Baker	4	6.8%	32	54.2%	5	8.5%	18	30.5%	0	0.0%	59	0.1%
Bradford	25	8.4%	158	53.2%	12	4.0%	100	33.7%	2	0.7%	297	0.3%
Gilchrist	2	7.7%	19	73.1%	3	11.5%	1	3.8%	1	3.8%	26	0.0%
Levy	48	14.3%	163	48.5%	22	6.5%	84	25.0%	19	5.7%	336	0.3%
Union	8	8.9%	48	53.3%	9	10.0%	21	23.3%	4	4.4%	90	0.1%
9 Orange	1,655	26.6%	2,716	43.7%	335	5.4%	1,463	23.5%	48	0.8%	6,217	5.4%
Osceola	493	25.2%	910	46.5%	182	9.3%	350	17.9%	20	1.0%	1,955	1.7%
10 Hardee	33	15.4%	121	56.5%	19	8.9%	39	18.2%	2	0.9%	214	0.2%

Highlands	16	6.1%	116	44.4%	34	13.0%	94	36.0%	1	0.4%	261	0.2%
Polk	601	15.4%	1,808	46.4%	464	11.9%	1,017	26.1%	4	0.1%	3,894	3.4%
11 Miami-Dade	3,030	38.0%	3,293	41.3%	409	5.1%	1,241	15.6%	0	0.0%	7,973	6.9%
12 Desoto	59	29.6%	65	32.7%	20	10.1%	52	26.1%	3	1.5%	199	0.2%
Manatee	306	19.4%	914	57.8%	147	9.3%	214	13.5%	0	0.0%	1,581	1.4%
Sarasota	803	32.5%	926	37.5%	207	8.4%	482	19.5%	50	2.0%	2,468	2.1%
13 Hillsborough	2,012	17.0%	5,413	45.7%	2,064	17.4%	2,178	18.4%	185	1.6%	11,852	10.3%
14 Bay	103	5.5%	780	41.8%	319	17.1%	640	34.3%	22	1.2%	1,864	1.6%
Calhoun	0	0.0%	53	63.1%	19	22.6%	12	14.3%	0	0.0%	84	0.1%
Gulf	0		0		0		0		0		0	
Holmes	1	1.6%	55	85.9%	5	7.8%	3	4.7%	0	0.0%	64	0.1%
Jackson	10	14.1%	24	33.8%	19	26.8%	18	25.4%	0	0.0%	71	0.1%
Washington	1	1.1%	64	71.9%	13	14.6%	10	11.2%	1	1.1%	89	0.1%
15 Palm Beach	2,385	41.2%	2,430	41.9%	88	1.5%	863	14.9%	28	0.5%	5,794	5.0%
16 Monroe	51	11.0%	277	59.6%	42	9.0%	74	15.9%	21	4.5%	465	0.4%
17 Broward	2,432	19.3%	6,390	50.8%	932	7.4%	2,739	21.8%	89	0.7%	12,582	11.0%
18 Brevard	41	1.6%	1,402	54.6%	468	18.2%	657	25.6%	0	0.0%	2,568	2.2%
Seminole	114	7.9%	953	65.9%	102	7.0%	278	19.2%	0	0.0%	1,447	1.3%
19 Indian River	185	19.3%	408	42.5%	83	8.7%	277	28.9%	6	0.6%	959	0.8%
Martin	239	25.2%	433	45.7%	50	5.3%	224	23.6%	2	0.2%	948	0.8%
Okeechobee	53	15.6%	135	39.7%	18	5.3%	120	35.3%	14	4.1%	340	0.3%
St. Lucie	270	14.4%	794	42.4%	167	8.9%	567	30.3%	73	3.9%	1,871	1.6%
20 Charlotte	165	16.3%	399	39.3%	194	19.1%	247	24.4%	9	0.9%	1,014	0.9%
Collier	467	20.3%	1,152	50.2%	237	10.3%	392	17.1%	48	2.1%	2,296	2.0%
Glades	12	18.5%	37	56.9%	5	7.7%	7	10.8%	4	6.2%	65	0.1%
Hendry	60	21.2%	157	55.5%	23	8.1%	37	13.1%	6	2.1%	283	0.2%
Lee	649	19.9%	1,546	47.3%	295	9.0%	658	20.1%	119	3.6%	3,267	2.8%
Statewide	26,172	22.8%	52,449	45.7%	9,927	8.6%	24,620	21.4%	1,653	1.4%	114,821	100.0%

Note: County jail includes time served and state prison includes life sentences.

* Total number of scoresheets received by the Department, including those with offense dates between October 1, 1995 and May 24, 1997.

** "Other Disposition" includes fines, county and non-reporting probation, termination of probation and re-instatement to probation.

Information For...

- Media
- Inmate/Offender Families
- Victims
- Students
- Vendors
- Offenders
- Job Seekers
- Volunteers

Publications

- Recidivism Report
- Annual Report
- Annual Substance Abuse Reports
- Quarterly Escapes Report
- Agency Strategic Plan
- Perimeter Check
- Quick Facts
- Inmate Orientation Handbook: [English - Spanish](#)
- More...

Orgs & Offices

- Office of the Secretary
- Organization
- Organization Charts
- Statewide Facility Directory
- Frequently Called Numbers
- Citizens' Services

About Us

- Who Are We?
- Mission
- History of Corrections

How Do I...

- Pay Court Ordered Payments
- Call an Inmate
- File a Complaint
- Send an Inmate Money
- Write to an Inmate
- Visit an Inmate
- Register for Victim Notification
- Submit a Public Records Request

Resources

- Contact Us
- Media Releases
- Open Government Information

Special Programs

- Beekeeping Programs
- Second Chance Farm - Horse Programs
- Inmate Dog Adoption Programs
- Corrections Foundation

