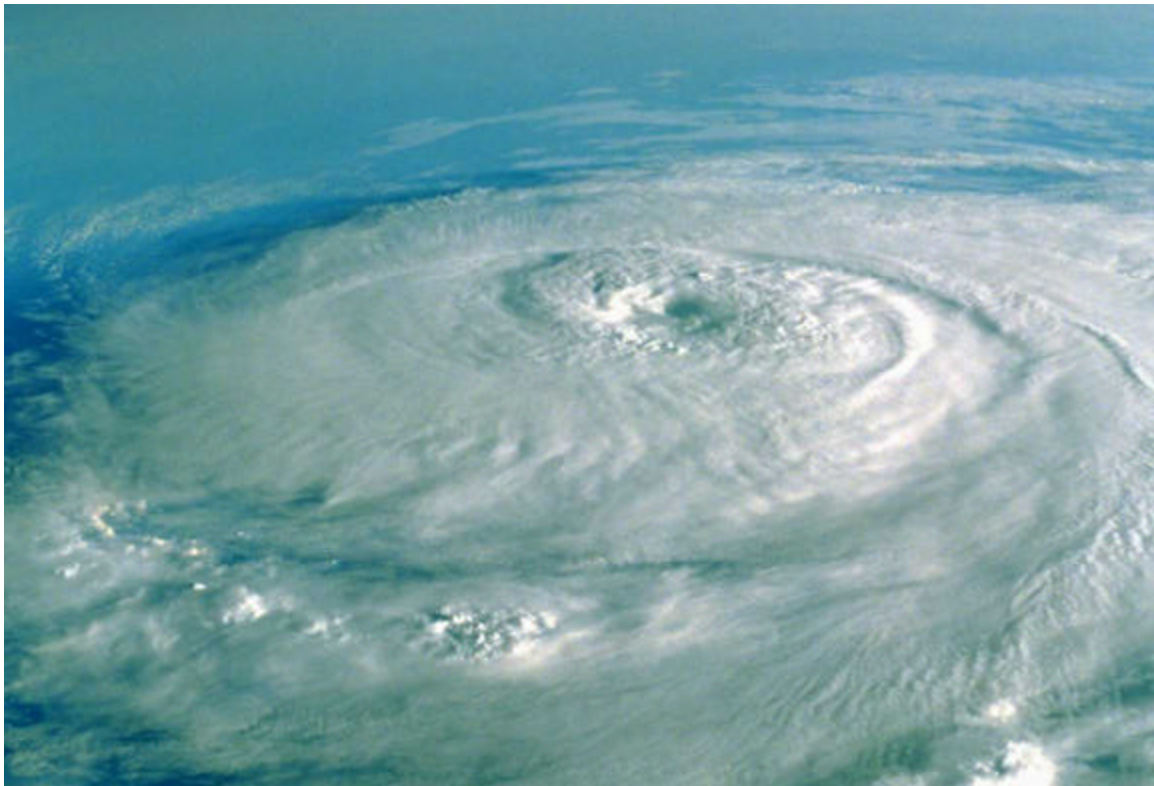


Report of Activities
as of
November 1, 2001



**Florida Commission on
Hurricane Loss
Projection Methodology**

Florida Commission on Hurricane Loss Projection Methodology

**P. O. Box 13300
Tallahassee, Florida 32317-3300
Staff: 850-413-1349
Fax: 850-413-1344**

Commission Members:

**Sneh Gulati, Ph.D., Chair
Statistics Expert**

**Mark Homan, FCAS, Vice Chair
Actuary, Property and Casualty Industry**

**Kay Cleary, FCAS
Actuary, FL Department of Insurance**

**Larry Johnson, FCAS
Actuary, FHCF Advisory Council**

**David Coursey, Ph.D.
Computer System Design Expert**

**Jay Newman, Executive Director
Florida RPCJUA**

**Elsie Crowell
Consumer Advocate, FL Department of Insurance**

**Randy Dumm, Ph.D.
Insurance Finance Expert**

**Jack Nicholson, Ph.D., CLU, CPCU
Chief of Florida Hurricane Catastrophe Fund**

**Craig Fugate, Director
Division of Emergency Management**

**James O'Brien, Ph.D.
Meteorology Expert**

Professional Team Members:

Mark Brannon, FCAS, MAAA, CPCU, Actuary
Paul Fishwick, Ph.D., Computer Scientist
Ron Iman, Ph.D., Statistician
Mark Johnson, Ph.D., Team Leader, Statistician
Richard Nance, Ph.D., Computer Scientist
John Pepper, P.E., Structural Engineer
Peter Ray, Ph.D., Meteorologist
Tom Schroeder, Ph.D., Meteorologist
Martin Simons, ACAS, Actuary
Fred Stolaski, P.E., Structural Engineer

Staff Members:

Tracy Allen
Anne Bert
Patti Elsbernd
Donna Sirmons
Ramona Worley

TABLE OF CONTENTS

	PAGE
I. Introduction	1
II. Principles	5
III. Commission Structure	7
IV. Findings of the Commission	12
1. Concerning Model Accuracy and Reliability	13
2. Concerning Proprietary Information	14
V. Process for Determining the Acceptability of a Computer Simulation Model	15
▪ Model Submission Checklist	27
VI. Modules	28
1. Model Identification	29
2. Module 1 – General Description of the Model	30
3. Module 2 – Background/Professional Credentials of the Modeling Firm	37
4. Module 3 – Tests of the Model	41
5. Module 4 – Professional Team On-site Review	75
6. Module 5 – Modeler Presentations and Discussion of Issues	82
7. Module - Standards Cross Reference	85
VII. Compliance With Standards and Related Information	88
1. 2001 Standards	89
2. Comparison of 2001 Standards to 2000 Standards	105
3. Working Definitions	108
4. Base Storm Set	121
5. Normative References	124
6. Guidebook	126

TABLE OF CONTENTS

	PAGE
VIII. Future Inquiries or Investigations	146
IX. Appendices	148
1. Florida Statutes, 2001	149
2. Meeting Schedule	152
3. Transcript Information	155
4. Commission Documentation	157
 Figures	
<i>Figure 1</i> Radius of Maximum Winds, Radius of Hurricane Force Winds, and Far Field Pressure by Central Pressure	43
<i>Figure 2</i> State of Florida Map by Region	44
<i>Figure 3</i> Modeled Number of Events, Relative Frequency, and Annual Occurrence Rate by Hurricane Category	45
<i>Figure 4</i> Probability of Hurricanes by Year	47
<i>Figure 5</i> Distribution of Hurricanes by Size	48
<i>Figure 6</i> Comparison of Actual vs. Modeled Exposures and Loss	52
<i>Figure 7</i> Grid for Calculating Hourly Wind Velocities, Category 5	69
<i>Figure 8</i> Grid for Calculating Hourly Wind Velocities, Category 3	70
<i>Figure 9</i> Grid for Calculating Hourly Wind Velocities, Category 1	70
<i>Figure 10</i> Florida County Codes	72
<i>Figure 11</i> State of Florida Map by County	73
 Forms	
<i>Form A</i> Zip Code Data Base	63
<i>Form B</i> Thirty Hypothetical Events	64
<i>Form C</i> One Hypothetical Event	65
<i>Form D</i> Loss Costs	66
<i>Form E</i> Probable Maximum Loss	68
<i>Form F</i> Hypothetical Events for Sensitivity and Uncertainty Analysis	69

I. INTRODUCTION

INTRODUCTION

Legislative Findings and Intent

The Florida Commission on Hurricane Loss Projection Methodology, consisting of a panel of experts, was established during the 1995 Legislative session. CS/HB 2619, passed on May 8, 1995, and signed by the Governor on June 14, 1995, created Section 627.0628, Florida Statutes. The Legislature specifically determined, in Section 627.0628(1), Florida Statutes, that reliable projections of hurricane losses are necessary to assure that rates for residential insurance are neither excessive nor inadequate, and that in recent years computer modeling has made it possible to improve upon the accuracy of hurricane loss projections. The Legislature found that “it is the public policy of this state to encourage the use of the most sophisticated actuarial methods to assure that consumers are charged lawful rates for residential property insurance coverage,” Section 627.0628(1)(a), Florida Statutes. The Legislature clearly supports and encourages the use of computer modeling as part of the ratemaking process.

Section 627.0628(3)(b), Florida Statutes, states that “to the extent feasible,” the Florida State Board of Administration (FSBA) must “employ actuarial methods, principals, standards, models, or output ranges found by the Commission to be accurate or reliable” in formulating reimbursement premiums for the Florida Hurricane Catastrophe Fund (FHCF).

The Role of the Commission

Although the statutory section creating the Commission is in the Florida Insurance Code, the Commission is an independent body and is administratively housed in the FSBA. The role of the Commission is limited to adopting findings relating to the accuracy or reliability of particular methods, principles, standards, models, or output ranges used to project hurricane losses. As noted above, the FHCF must use the Commission’s findings, to the extent feasible, in establishing reimbursement premium rates. Individual insurers are not required to use the Commission’s findings, but may choose to do so in order to support or justify a rate filing. Section 627.0628(3)(c), Florida Statutes, provides that “an insurer may employ actuarial methods, principles, standards, models, or output ranges found by the Commission to be accurate or reliable to determine hurricane loss factors for use in a rate filing” with the Department of Insurance. If the insurer chooses to utilize the Commission’s findings, such findings are deemed “admissible and relevant in consideration of a rate filing by the Department or in any arbitration or administrative or judicial review.”

The Commission’s rejection of a particular method or model has no binding effect upon insurers or the Department of Insurance. The Department of Insurance may still accept a method or model if an insurer decides to use it in a rate filing. It is important to note that the Department of Insurance reviews and approves rates based on the standards and requirements of Section 627.062, Florida Statutes -- not on particular methodologies. The methodology appropriate for one insurer in leading to sound rates may be inappropriate for another insurer. The Department of Insurance has complete authority to review and determine the resolution of a rate filing. The Commission’s charge is limited to adopting findings regarding methods or models it reviews. The Commission’s findings are not binding on either the FSBA as regards the

FHCF or on the Department of Insurance. Insurers are not required to use the Commission’s findings, but may choose to do so in order to support or justify a rate filing.

The Work of the Commission

The Commission, a panel of experts, was created to evaluate computer models and other recently developed or improved actuarial methodologies for projecting hurricane losses so as “to resolve conflicts among actuarial professionals” and “to provide both immediate and continuing improvement in the sophistication of actuarial methods used to set rates...”, Section 627.0628(1)(b), Florida Statutes. Section 627.0628(3)(a), Florida Statutes, defines the role of the Commission:

The commission shall consider any actuarial methods, principles, standards, models, or output ranges that have the potential for improving the accuracy of or reliability of the hurricane loss projections used in residential property insurance rate filings. The commission shall, from time to time, adopt findings as to the accuracy or reliability of particular methods, principles, standards, models, or output ranges.

The statutory language is clear in that those methods or models which have the potential for improving the accuracy or reliability of hurricane loss projections are the ones to be considered by the Commission. “Improving” suggests that the methods or models should be an improvement over the then existing current methods or models used in the residential rate filing process prior to the Commission’s enactment.

Section 627.0628(3)(d), Florida Statutes, originally established two deadlines for the Commission to take action. No later than December 31, 1995, the Commission was required to “adopt initial actuarial methods, principles, standards, models, or output ranges”. No later than July 1, 1996, the Commission was required to “adopt revised actuarial methods, principles, standards, models, or output ranges which include specification of acceptable computer models or output ranges derived from computer models”. The Commission met both those deadlines. To achieve the requirements of the Florida Statutes, in 1995 the Commission developed the following three-step evaluation process:

- 1. **Identification of methods or models** -- models were identified in the following ways: (1) by referral after having been rejected by the Department of Insurance; (2) by being submitted directly to the Commission; or (3) by the Commission’s soliciting them directly from the sponsor or owner.
- 2. **Analysis of the method or model** -- the Commission adopted Standards and five Modules to assist in its analysis. The Modules are as follows:

- Module 1 - General Description of the Model
- Module 2 - Background and Professional Credentials of the Modeling Firm
- Module 3 - Tests of the Model
- Module 4 - Professional Team On-Site Review
- Module 5 - Modeler Presentations and Discussion of Issues

3. **Adoption of findings** -- the Commission may (1) accept a method or model, model specifications, or output ranges derived from computer models; or (2) accept the method or model, model specifications, or output ranges subject to modification; or (3) reject the method or model, model specifications, or output ranges.

At least annually, the Commission adopts revisions to actuarial methods, principals, standards, models, and/or output ranges, Section 627.0628(3)(d), Florida Statutes. The Commission adopted standards for the specifications of a computer model in June, 1996. Those standards were subsequently revised in May 1997, May 1998, August 1999, September 2000, and again in October 2001.

The Mission Statement

At the September 21, 1995, Commission meeting, the following mission statement was adopted:

The mission of the Florida Commission on Hurricane Loss Projection Methodology is to assess the efficacy of various methodologies which have the potential for improving the accuracy of projecting insured Florida losses resulting from hurricanes and to adopt findings regarding the accuracy or reliability of these methodologies for use in residential rate filings.

The mission statement closely tracks the statute and restates the critical aspects of the Commission’s work. Minor revisions to the mission statement were adopted on November 30, 1995, and can be found in the Principles section of this Report.

Overview

To date, the following models have been evaluated by the Commission against the standards for the applicable years listed below and have been found acceptable.

Modeling Company	Standards
Applied Insurance Research, Inc.	1996, 1997, 1998, 1999, 2000
Applied Research Associates	1999, 2000
E.W. Blanch Co.	1998, 1999, 2000
EQECAT, Inc.	1997, 1998, 1999, 2000
Risk Management Solutions, Inc.	1997, 1998, 1999, 2000
Tillinghast–Towers Perrin	1998

II. PRINCIPLES

PRINCIPLES

1. All adoptions of findings and any other formal action taken by the Commission shall be made at a publicly-noticed meeting, by motion followed by a formal member by member vote, all of which shall be transcribed by a court reporter, such transcription to be made a part of the official record of the proceedings of the Commission. *History-New 11/30/95*
2. The mission of the Florida Commission on Hurricane Loss Projection Methodology is to assess the effectiveness of various methodologies which have the potential for improving the accuracy of projecting insured Florida losses resulting from hurricanes and to adopt findings regarding the accuracy or reliability of these methodologies for use in residential rate filings. *History-New 9/21/95, rev. 11/30/95*
3. The proprietary nature of the computer simulation model being reviewed should be respected; however, the Commission must have sufficient information and access to information and data to make a determination of a model's acceptability. *History-New 11/30/95, rev. 5/20/96*
4. All findings adopted by the Commission are subject to revision at the discretion of the Commission. *History-New 11/30/95*
5. No model or method will be determined to be acceptable by the Commission until it has been evaluated by the Commission in accordance with the process and procedures which the Commission considers appropriate for that model or method. *History-New 11/30/95, rev. 5/20/96*
6. The Commission's determination of acceptability of a specific model or method does not constitute determination of acceptability of other versions or variations of that model or method; however, the Commission will attempt to accommodate routine updating of acceptable models or methods. *History-New 11/30/95, rev. 5/20/96*
7. The Commission's process for determination of acceptability of models should, as far as possible, not restrict competition in the catastrophe modeling industry or thwart innovation in that industry. *History-New 11/30/95, rev. 5/20/96*
8. All models or methods should be theoretically sound. *History-New 9-21-95*
9. The output of a computer simulation model should be reasonable and the modeler should demonstrate their reasonableness. *History-New 9-21-95*
10. Insurers should not improperly manipulate or control computer simulation model results. *History-New 9-21-95*
11. Models or methods should not be biased to overstate or understate results. *History-New 9-21-95*
12. All sensitive components of the computer simulation model should be identified. *History-New 9-21-95*

III. COMMISSION STRUCTURE

Commission Structure

Oversight

The Commission was created, pursuant to Section 627.0628, Florida Statutes, “to **independently** exercise the powers and duties specified” in that statute. Thus, while the Commission is administratively housed within the Florida State Board of Administration (FSBA), the FSBA annually appoints one of the Commission members to serve as chair, and the FSBA provides the Commission, as a cost of administration of the Florida Hurricane Catastrophe Fund (FHCF), with travel reimbursement, expenses, and staff support. The FSBA has no governing authority over the Commission.

Membership and Required Expertise

Section 627.0628(2)(b), Florida Statutes, requires that the Commission consist of eleven members with the following qualifications and expertise:

1. The Insurance Consumer Advocate;
2. The Chief Operating Officer of the FHCF;
3. The Executive Director of the Residential Property and Casualty Joint Underwriting Association;
4. The Director of the Division of Emergency Management of the Department of Community Affairs;
5. The actuary member of the FHCF Advisory Council;
6. Six members appointed by the Insurance Commissioner, as follows:
 - a. An employee of the Department of Insurance who is an actuary responsible for property insurance rate filings;
 - b. An actuary who is employed full time by a property and casualty insurer which was responsible for at least 1 percent of the aggregate statewide direct written premium for homeowner’s insurance in the calendar year preceding the member’s appointment to the Commission;
 - c. An expert in insurance finance who is a full time member of the faculty of the State University System and who has a background in actuarial science;
 - d. An expert in statistics who is a full time member of the faculty of the State University System and who has a background in insurance;
 - e. An expert in computer system design who is a full time member of the faculty of the State University System;
 - f. An expert in meteorology who is a full time member of the faculty of the State University System and who specializes in hurricanes.

Terms of Members

The Insurance Consumer Advocate, Chief Operating Officer of the FHCF, Executive Director of the Residential Property and Casualty Joint Underwriting Association, Director of the Division of Emergency Management of the Department of Community Affairs, and the actuary member of the FHCF Advisory Council shall serve as a Commission member for as long as the individual holds the position listed.

The six members appointed by the Insurance Commissioner shall serve until the end of the Insurance Commissioner’s term of office, unless the Insurance Commissioner releases them earlier for cause (Section 627.0628(2)(c), Florida Statutes).

Officers

Officers: The Officers of the Commission shall be a Chair and a Vice Chair.

Selection: Annually, the FSBA shall appoint one of the Commission members to serve as the Chair (Section 627.0628(2)(d), Florida Statutes). After the Chair is appointed, the Commission shall, by majority roll call vote, select a Vice Chair.

Duties of the Chair and Vice Chair:

- A. The **CHAIR** shall:
 - 1. Preside at all meetings;
 - 2. Conduct a roll call of members at each meeting;
 - 3. Ensure all procedures established by the Commission are followed.

- B. The **VICE CHAIR** shall:
 - In the absence of the Chair, preside at Commission meetings and have the duties, powers, and prerogatives of the Chair.

Member Duties and Responsibilities

The purpose of the Commission is to adopt findings relating to the accuracy or reliability of particular methods, principles, standards, models, or output ranges used to project hurricane losses. This work is extremely technical and requires specialized expertise. Therefore, the Legislature, in Section 627.0628, Florida Statutes, limited membership on the Commission to a careful balance of individuals meeting specific employment, education, and expertise requirements. Thus, each member’s contribution cannot be underestimated and each member needs to make every effort to attend all meetings, in person or by telephone, and be prepared to actively participate. In particular, each member is responsible for the following duties:

- 1. Fully prepare for each Commission and Committee meeting;
- 2. Attend and participate at each meeting in person or by telephone;
- 3. Give notice to FHCF staff, in advance if possible, when a member must leave a meeting early or cannot attend at all;
- 4. Abide by the requirements of Florida’s Sunshine Law. A summary of the requirements of this law is outlined below;
- 5. Give notice of special conflicts of interest. If a special conflict of interest arises and the special conflict is apparent prior to the meeting, the member must give advance notice to FHCF staff. If the special conflict becomes apparent during a meeting, the member should immediately inform the Chair or Vice Chair. The conflicted member shall reclude him or herself from any activity of the Commission in the area of the special conflict;

6. Commission members are expected to meet the highest standards of ethical behavior. It is understood, given the nature of the expertise held by Commission members, that general conflicts of interest are inherent. The conflicts of interest which are addressed in Section 112.3143, Florida Statutes, and the conflicts which would preclude a Commission member from voting on an issue are only those conflicts which are “special” in that the Member, the Member’s relative or a business associate of the Member stands to reap a direct financial benefit from the issue being voted upon. Financial benefit which is speculative, uncertain, or subject to many contingencies is not a “special” benefit which would preclude a Member from voting. See Attorney General’s Opinion 96-63 (September 4, 1996) and Commission on Ethics Opinion 94-18 (April 21, 1994).

Commission Meetings

Quorum: A majority of the eleven Commission members, i.e. six members, is required to constitute a quorum. A quorum is the number of members necessary to transact the official business of the Commission. “Presence” shall be defined as either a physical presence or as participation by any other means that allows the Commission member to communicate simultaneously with those members who are present.

Voting Abstentions based on Conflict: For the purpose of determining whether there is a quorum, if a member abstains from voting based upon a conflict of interest, that member would still be deemed “present” for purposes of the quorum requirement (Attorney General’s Opinion 75-244; August 29, 1975).

Temporary Absence: “If a member in attendance at a meeting is called away and is unable to return to the meeting, the transcript should reflect the point at which...[the member] left and—if the remaining members constitute a quorum—the meeting should continue.” If, however, the member is only temporarily absent, and this member is needed to constitute a quorum, the “appropriate procedure would be to recess the meeting until the member can return or, at least, to postpone a vote on any matter before the body until...[the member’s] return” (Attorney General’s Opinion 74-289; September 20, 1974).

Meeting Notices: Written notice of a meeting of the Commission shall be provided to each member as soon as possible and, at a minimum, except in the event of an emergency meeting, at least 14 days prior to the date scheduled.

Public Access: Any member of the public shall have access to all Commission meetings.

Agendas: Agendas listing topics planned for discussion shall be furnished to each member prior to the meeting. However, the agenda is to be used merely as a guide and topics not listed may be raised and discussed and the members may choose not to address an issue or topic listed on the agenda.

Location: Meetings shall be in Tallahassee, Florida, unless special circumstances arise.

Recording: The FHCF staff shall be responsible for ensuring that all meetings are recorded. The transcribed record shall be maintained by the staff of the FHCF.

Voting Requirement: Except in the case of a “special” conflict of interest, no Commission member who is present at any meeting at which an official decision or act is to be taken or adopted by the Commission may abstain from voting (Section 286.012, Florida Statutes).

Designation of an Acting Chair: Depending on the circumstances, the Chair or Vice Chair may temporarily appoint any member to act as Chair in those situations where the physical presence of a Chair is desirable to facilitate conducting the meeting.

Committee Meetings

Committee meetings are for the purpose of discussing issues and developing standards. A public notice is required, but it is not necessary that a quorum be present since all official business requiring voting shall be done at Commission meetings.

Sunshine Law

Section 286.011, Florida Statutes, a/k/a “The Sunshine Law” or “open meeting law” applies to the Commission.

Scope of the Sunshine Law: In any place where two or more members of the Commission are present, there is the potential for violating the Sunshine Law.

Any communication, whether in person, by telephone, computer, etc., concerning any information on which *foreseeable action* may be taken by the Commission is a “meeting” that must meet the requirements of Florida’s Sunshine Law **if** the communication takes place between two or more Commission members.

Basic Requirements: All “meetings” subject to the Sunshine Law must be—

- Open to the Public;
- Noticed;
- Minutes must be taken and preserved. The official minutes of the Commission will consist on a verbatim transcript unless special circumstances arise. In addition, staff may prepare a summary of the meeting that will be added to the transcript and together will comprise the “minutes” of the meeting.

The FHCF staff ensures that all scheduled meetings of the Commission are filed for public notice in the Florida Administrative Weekly and a transcript is taken and preserved.

IV. FINDINGS OF THE COMMISSION

Findings of the Commission

Concerning Model Accuracy and Reliability

Background

Section 627.0628(3)(a), Florida Statutes, instructs the Commission to make findings from time to time as to the accuracy or reliability of standards and models, among other things. The following findings address the accuracy or reliability of the standards that the Commission has adopted over the past four years and the accuracy or reliability of the several computer simulation models which the Commission has reviewed. The Commission thus far has reviewed computer simulation models exclusively because these constitute the only widely accepted approach to estimate residential loss costs.

The Commission finds that the computer simulation models which it has reviewed are stochastic forecasting models. This means that future hurricane events are stochastically generated and the associated loss costs are accumulated. By generating a sufficient body of future events, the sampling uncertainty in the output ranges owing to the random variate generation process becomes negligible. The Commission finds that the accepted models produce statistically sound loss costs for the entire state of Florida.

Accurate and Reliable - Defined

The Commission finds that the computer simulation models which have been reviewed by the Commission and found acceptable include appropriate model representations to simulate hurricanes and the induced damage on residential property in Florida. The basic features of the model construction are reflected in the six sections of standards established and refined since June of 1996: general standards reflecting the professional status of the model designers and testers and generic aspects of the model; meteorological standards covering all aspects of this infrequent weather phenomenon; vulnerability standards assessing the impact of the storm on residential property; actuarial standards assessing the damage impact in insurance terms; computer standards providing the overall design, construction, and execution of the model; and statistical standards addressing the statistical foundation of the model and the sensitivity and uncertainty assessment of model outputs as a function of model inputs.

The Commission finds and recognizes that the scientific fields underlying loss projection models continue to evolve providing further insights into property damage and insurance implications. As a direct consequence, the Commission annually reviews and revises the standards comprising its yearly report of activities. The Commission finds that the standards adopted each year represent the current state-of-the-art in computer simulation modeling for purposes of producing loss costs for residential property in Florida that are accurate and reliable.

The words “accurate” and “reliable” are used in Section 627.0628, Florida Statutes, but are not defined therein. In the context of computer simulation modeling, “accurate” means that the models have been designed and constructed in a careful, sensible, and scientifically acceptable manner. “Reliable” is defined for computer simulation models as meaning that they consistently produce dependable results.

Findings of the Commission

Concerning Proprietary Information

The Commission finds the following with respect to Principle #3:

The Commission finds that each of the companies which owns a computer simulation model reviewed by the Commission has proprietary information regarding the design and construction of that model. The Commission finds that the modeling companies are unwilling to reveal that proprietary information to the Commission in the context of the public meetings which the Commission holds because their competitors are part of the audience or can get a copy of the publicly available transcript of the meeting. The Commission finds that the modeling companies are willing to reveal all of their proprietary information if that information can remain confidential. Since that information would become publicly available in the context of a meeting in the sunshine, the Commission has authorized the assembling of the Professional Team to review the models on-site on behalf of the Commission. The Commission finds and recognizes that some or all of the models have been reviewed by various state departments of insurance, by various credit rating agencies, by their direct writer clients, and by their reinsurance clients.

**V. PROCESS FOR DETERMINING
THE ACCEPTABILITY OF A
COMPUTER SIMULATION
MODEL**

PROCESS FOR DETERMINING THE ACCEPTABILITY OF A COMPUTER SIMULATION MODEL

This section sets out the Commission's process for the determination of acceptability of a computer simulation model. Although the Commission's charge is to review *any* method or model which has the potential for improving the accuracy or reliability of hurricane loss projections for purposes of residential property ratemaking in Florida, the Commission's focus has been computer simulation models. When the Commission undertakes the review of other methods, the acceptability process will be revised accordingly.

The Commission has determined that prior to November 1 of each year, it will adopt new standards, revise existing standards, and, if necessary, revise this process. The effective date of new or revised standards will be November 1 unless otherwise specified by the Commission.

The Commission has determined that significant changes are those changes to the standards or any changes to the model which result in changes to loss costs or have potential for changes to the loss costs. Any minor revisions, changes to the standards, or any changes to the model by the modeler which do not result in changes to loss costs are not considered significant. The Commission may determine in its judgement whether a change is significant.

The Commission has determined that any modeling company that wishes to be reviewed for compliance with the standards adopted by the Commission shall notify the Commission in accordance with the requirements set out below by February 28 following the adoption of each year's standards. Any modeling company which fails to notify the Commission by February 28 for consideration under the most recently adopted standards or fails to be found acceptable in accordance with those standards shall not be considered for review until the standards are again revised or reviewed.

The Commission has further determined that the period between November 1, the effective date of new and revised standards, and February 28, the deadline for notification by the modeler, is a reasonable amount of time for any modeler to comply with the standards adopted by the Commission. If the Commission determines that four months is not sufficient, based on the nature of the changes to the standards or based on other circumstances which might necessitate a longer period of time for compliance, then the Commission will adjust this period of time accordingly. If requested by a modeler, the Chair shall have the authority to grant a reasonable extension should the Chair determine that an emergency or unusual situation exists which warrants an extension and is determined to be beyond the control of the modeler.

I. Notification Requirements for New and Existing Modeling Companies

A. *Notification*

For purposes of this section, a “new” modeling company is defined as a company whose model was not accepted by the Commission under the previous year’s standards. An “existing” company is defined as a company whose model was accepted by the Commission under the previous year’s standards.

1. **Notification of readiness for review by a new modeling company.** By February 28 of each year, any new modeling company wishing to have its model reviewed for the first time for acceptability by the Commission shall notify the Chair of the Commission in writing that the company is prepared for review. The notification shall consist of (1) a letter to the Commission; (2) a summary statement of compliance with each individual standard; (3) the data and analyses required by Module 1, Module 2, and Module 3; (4) a general description of the information to be presented to the Professional Team and to the Commission; and (5) a completed Model Submission Checklist.

More specifically,

- a. The letter to the Commission shall state that professionals having credentials and/or experience in the areas of meteorology, statistics, actuarial science, engineering, and computer science have reviewed the model for compliance with the standards and that the model is ready to be reviewed by the Professional Team. Any exceptions to this statement will be noted in the letter and accompanied by a complete explanation.
- b. A summary statement of compliance with each standard and the data and analyses required by Modules 1, 2, and 3 shall be enclosed with the letter referenced in 1, above.
- c. A copy of any non-proprietary information and documentation which the modeler anticipates presenting to the Commission in connection with the acceptability process, and a general description of any proprietary information which the modeler intends to present to the Professional Team in connection with the acceptability process shall be enclosed.
- d. Twenty-five (25) bound copies and twenty-five (25) CD-ROM copies of all documentation will be provided to the Commission. The electronic copies of the submission must be provided in the following manner:
 1. Form B, Form D, Form F, and the Output Ranges will be provided on CD-ROM in both an Excel and a PDF format;
 2. The remaining portions of the submission will be provided on CD-ROM in PDF format;

3. All data file names shall include the abbreviated name of the Modeler and the Standards year;
 4. All revised data files submitted shall include the revision date, the abbreviated name of the Modeler, and the Standards year in the file name.
- e. Format of the Submission:
1. Table of Contents shall be included;
 2. Materials submitted shall be consecutively numbered using a numbering system from the beginning to the end of the submission;
 3. All tables, graphs, and other non-text items shall be clearly labeled and specifically listed in the table of contents;
 4. Submission shall state the standard or module item number in italics and give the response in non-italics (note, there is no need to restate module questions);
 5. Modelers are encouraged to present graphs in color and to use presentation techniques that enhance readability and understanding.

2. **Notification of readiness for review by an existing modeling company.** By February 28 of each year, any existing modeling company wishing to have its model reviewed for acceptability by the Commission shall notify the Chair of the Commission in writing that the company is prepared for review. The notification shall consist of (1) a letter to the Commission; (2) a summary statement of compliance with each individual standard; (3) the data and analyses required by Module 1, Module 2, and Module 3; (4) a general description of the information to be presented to the Professional Team and to the Commission; and (5) a completed Model Submission Checklist.

More specifically,

- a. The letter to the Commission shall state that professionals having credentials and/or experience in the areas of meteorology, statistics, actuarial science, engineering, and computer science have reviewed the model for compliance with the standards and that the model is ready to be reviewed by the Professional Team. Any exceptions to this statement will be noted in the letter and accompanied by a complete explanation. **The letter must also identify any changes made to Modules 1, 2, and 3 which were submitted the previous year.**
- b. The data and analyses required by Modules 1, 2, and 3 shall be enclosed with the letter referenced in 2. For existing modeling companies, the material must be updated as appropriate to reflect compliance with the new or revised standards even though the modeling company submitted

this material as part of a determination of acceptability under the previous year's standards.

- c. A copy of any non-proprietary information and documentation which the modeler anticipates presenting to the Commission in connection with the acceptability process and a general description of any proprietary information which the modeler intends to present to the Professional Team in connection with the acceptability process shall be enclosed.
 - d. Twenty-five (25) bound copies and twenty-five (25) CD-ROM copies of all documentation will be provided to the Commission. The electronic copies of the submission must be provided in the following manner:
 1. Form B, Form D, Form F, and the Output Ranges will be provided on CD-ROM in both an Excel and a PDF format;
 2. The remaining portions of the submission will be provided on CD-ROM in PDF format;
 3. All data file names shall include the abbreviated name of the Modeler and the Standards year;
 4. All revised data files submitted shall include the revision date, the abbreviated name of the Modeler, and the Standards year in the file name.
 - e. Format of the Submission –
 1. Table of Contents shall be included;
 2. Materials submitted shall be consecutively numbered using a numbering system from the beginning to the end of the submission;
 3. All tables, graphs, and other non-text items shall be clearly labeled and specifically listed in the table of contents;
 4. Submission shall state the standard or module item number in italics and give the response in non-italics (note, there is no need to restate module questions);
 5. Modelers are encouraged to present graphs in color and to use presentation techniques that enhance readability and understanding.
3. **Revisions to the Standards or the Model - Not Significant.** If the Commission does not revise any standards or makes only minor revisions to some standards so that existing models would otherwise be in compliance with all the standards, then the modeling company will notify the Commission in writing that there have been no significant changes to the model previously determined acceptable. The Commission will then meet and review the letter

and any other documentation provided and determine whether the model will be considered acceptable for an additional year and whether an on-site review by the Professional Team is warranted and whether a meeting with the Commission is warranted.

4. **Revisions to the Standards or the Model – Significant.** If the Commission does not revise or makes only minor revisions to some existing standards but makes significant changes to other existing standards and/or adopts new standards so that a model already determined to be acceptable is still in compliance with some, but not necessarily all, the standards, then the modeling company will inform the Commission in writing as to whether it believes it is still in compliance with the standards that have been substantially revised or are new. If an existing modeling company makes significant changes to the version of the model previously accepted by the Commission, then at the time it notifies the Commission that it is ready to have its model reviewed for acceptability, the modeling company must notify the Commission in writing of the change(s) and describe the magnitude of the change(s). The Commission will then meet and review the modeling company's notification and any other documentation provided and determine whether the model is acceptable for an additional year or whether an on-site review by the Professional Team is warranted or whether an on-site review is not necessary but that additional documentation must be provided which will then be reviewed at a Commission meeting. The Commission will not review changes made to a previously approved version of a model at any time other than after the next February 28 notification date.
5. The modeler must notify the Chair of the Commission in writing, as soon as possible, of any unusual situations that may impact the model submission.

B. Review of the Readiness Notification

The Chair will notify the Commission members of a projected time frame for an on-site review by the Professional Team and for the Commission meeting to review a model for acceptability. If there is any doubt as to the readiness of the modeling company to be reviewed by the Professional Team on-site, the Chair may request that the modeling company (in person or by conference call) meet with the Commission and explain any issues concerning compliance with the Standards or Modules 1, 2, and 3. The Commission may request additional information if deemed necessary to clarify the submission. If the Commission determines that the submission is unclear or non-responsive, the Commission may specify a time frame for correcting the deficiency. The Professional Team will review and verify the explanation of each deficiency. The modeler shall provide the Commission with a written response explaining each deficiency correction prior to the Commission's review of the model. Failure of the modeler to correct the deficiency within the time frame specified will result in the termination of the review process. The prior year's acceptance of a model will expire at this time, and the modeling company will be notified as such in writing. Upon termination of the review process, the modeling company shall be required to wait until after the next revision or review of the standards before requesting the Commission to review its model.

C. Professional Team On-Site Review

1. **Telephone Conference Call.** After the Commission has received a complete submission from the modeling company and prior to the on-site review, at the request of the Commission or the modeler, the FSBA staff will arrange a telephone conference call between the modeling company and the Professional Team or a subset of the Professional Team. The purpose of this call is to review the materials, data files, and personnel that will need to be on-site during the review by the Professional Team. This does not preclude the Professional Team from asking for additional information during the on-site review that was not discussed during the conference call. The Professional Team will not make a determination regarding the modeling company's readiness for review, but the conference call will allow the modeling company and the Professional Team the opportunity to clarify any concerns or ask any questions regarding the upcoming on-site review. This conference call will be the only scheduled opportunity for modelers to clarify any questions directly with the Professional Team prior to their on-site review.

2. **New Modeling Companies.** If a determination has been made that the modeling company is ready for an on-site review, the staff will schedule an on-site review of the Professional Team to (a) review the information provided by the modeling company in Modules 1, 2, and 3; and (b) to audit for compliance with the most recently adopted standards. The Commission staff will handle all arrangements for the on-site review. The on-site review will be scheduled at a mutually agreeable time. On-site, the Professional Team will assist the Commission in identifying issues for the Commission's consideration, including the development of new standards, and also verifying that each existing standard has been met.

There are two possible outcomes of the on-site review regarding auditing for compliance with the standards:

- a. The Professional Team determines that, in its opinion, the model complies with the standards, and so reports to the Commission.

- b. The Professional Team determines that, in its opinion, the model has not been demonstrated to comply with one or more standards.

For those standards not met, the Professional Team is free to react to possible corrections proposed by the modeling company but will not tell the modeling company how to correct the non-compliance. If the problems can be remedied while the Professional Team is on-site, the Professional Team will review the corrective actions taken. The Professional Team will provide a draft report to the modeler while on-site to allow the modeler the opportunity to screen for proprietary material.

If the problems cannot be corrected while the Professional Team is on-site, then the modeling company will have seven days from the final day of the initial on-site review to notify the Chair in writing that it will be ready for an

additional review within 30 days of this notification. The Chair will assemble the Professional Team or an appropriate subset of the Professional Team for only one additional review to ensure that the corrections have been incorporated into the current, running version of the model. The Professional Team will make no more than one additional on-site review to address problems noted by the Professional Team.

As to a new model, if the modeling company disagrees with the Professional Team as to compliance, then the company has two options: (1) it can proceed with the scheduled Commission meeting and present its arguments to the Commission at its meeting to determine acceptability; or (2) it can withdraw its request for review. Such a withdrawal will result in the company having to wait until the next revision or review of the standards before requesting the Commission review its model.

3. **Existing Modeling Companies.** If a determination has been made that an on-site review is necessary, the staff will schedule the on-site review of the Professional Team to: (a) audit for compliance with the most recently adopted standards; and (b) review any changes provided by the modeling company in Modules 1, 2, and 3. The Commission staff will handle all arrangements for the on-site review. The on-site review will be scheduled at a mutually agreeable time. On-site, the Professional Team will assist the Commission in identifying issues for the Commission's consideration, including the development of new standards, and also verifying that each standard has been met.

There are two possible outcomes of the on-site review regarding auditing for compliance with the standards:

- a. The Professional Team determines that, in its opinion, the model complies with the standards, and so reports to the Commission.
- b. The Professional Team determines that, in its opinion, the model has not been demonstrated to comply with one or more standards.

For those standards not met, the Professional Team is free to react to possible corrections proposed by the modeling company but will not tell the modeling company how to correct the non-compliance. If the problems can be remedied while the Professional Team is on-site, the Professional Team will review the corrective actions taken. The Professional Team will provide a draft report to the modeler while on-site to allow the modeler the opportunity to screen for proprietary material.

If the problems cannot be corrected while the Professional Team is on-site, then the modeling company will have seven days from the final day of the initial on-site review to notify the Chair in writing that it will be ready for an additional review within 30 days of this notification. The Chair will assemble the Professional Team or an appropriate subset of the Professional Team for only one additional review to ensure that the corrections have been

incorporated into the current, running version of the model. The Professional Team will make no more than one additional on-site review to address problems noted by the Professional Team.

If the modeling company disagrees with the Professional Team as to compliance, then the company has two options: (1) it can proceed with the scheduled Commission meeting and present its arguments to the Commission at its meeting to determine acceptability; or (2) it can withdraw its request for review. Such a withdrawal will result in the expiration of its acceptability under the previous year's standards and cause the modeling company to wait until after the next revision or review of the standards before requesting the Commission review its model. The Company will be notified in writing of the termination of its acceptability under the previous year's standards.

D. Professional Team Report

After the new or existing model has been reviewed on-site and prior to the meeting at which the model will be reviewed for acceptability, the Professional Team will provide the Commission with a written report. The Professional Team report shall include a section that summarizes its review of the information submitted in Modules 1, 2, and 3, as well as a general overview of the model, citing any pertinent issues for the Commission's consideration. As to each standard, the Professional Team will state whether it verified the standard was met or not met, and also provide an explanation and appropriate support for the Professional Team's conclusion. For both new and existing models, as to each standard, the report will indicate whether or not the Professional Team reviewed proprietary information or documentation and, if so, include a general description of this proprietary information or documentation. Any disagreements among Professional Team members concerning compliance to standards will be noted and explained.

II. Review by the Commission

A. General Review of a Modeling Company

For any modeling company seeking the Commission's determination of acceptability, the Commission may request a meeting with the modeling company prior to the Commission's review of the modeler's compliance with the standards. The meeting may provide a general discussion about the model and will also give the Commission and the modeler an opportunity to address any issues. This meeting may be conducted concurrently with the meeting to determine acceptability.

B. Meeting to Determine Acceptability

The Commission will meet at a properly noticed public meeting to determine the acceptability of a new or existing model once the modeling company has provided all required material and the Professional Team has concluded its on-site review or any rescheduled reviews.

All materials shall be reviewed by the Professional Team prior to presentation to the Commission. If the Commission determines that meeting one standard makes it impossible to meet a second standard, the conflict will be resolved by the Commission and the Commission will determine which standard will prevail. If at the meeting a unique or unusual situation arises, the Commission will determine the appropriate course of action to handle that situation, using its sound discretion and adhering to the legislative findings and intent as expressed in Section 627.0628(1), Florida Statutes. Each company's model will be reviewed independently of any other companies' models previously approved or presently applying for review.

C. *Voting at the Meeting to Determine Acceptability*

At its public meeting to determine the acceptability of a new or existing model, once a quorum is present, either in person or by telecommunications, all votes will be by a roll call vote based on the majority vote of those present. No Commissioner, who is present at any Commission meeting at which an official decision or act is to be taken or adopted by the Commission, may abstain from voting except when a conflict of interest exists (Section 286.012, Florida Statutes, Section 112.3143, Florida Statutes). For those circumstances in which a standard does not apply to a particular model, the Commission will vote affirmatively that the standard does not apply and such a vote will constitute a determination by the Commission that the standard is not applicable.

To be determined acceptable, the model must have met all applicable standards by a majority vote on each standard.

1. For a new model, the Commission will consider each standard and will determine whether the model meets each standard by a majority vote of those present. Before voting on whether the model meets the standard under consideration, the Commission will permit the modeler to make a presentation in support of its compliance to the standard. Following the modeler's presentation, the Professional Team will comment on whether the model meets the standard. Commission members will then have the opportunity to ask questions of both the modeler and the Professional Team. Once a motion is made and seconded and the discussion has concluded, a roll call vote will be taken on each standard. The model will be determined to have met the standard if the majority of those present vote that the standard has been met. The Commission will have completed its determination of the acceptability of the model when it has completed voting on each standard individually. This does not preclude the Commission from revisiting a previous vote.
2. For an existing model, the Commission will consider each standard and will determine whether the model meets each standard by a majority vote of those present. Before voting on whether the model meets the standard under consideration, the Commission will permit the modeler to make a presentation in support of its compliance to the standard. Following the modeler's presentation, the Professional Team will comment on whether the model meets the standard. Commission members will then have the opportunity to ask questions of both the modeler and the Professional Team.

There are three types of standard changes that will require a vote by the Commission:

- a. No Change – The Commission will vote a blanket acceptability for compliance with the standards with no revisions;
- b. Not Significant – The Commission will determine whether or not it will vote a blanket acceptability for compliance with standards where changes were determined by the Commission as being not significant;
- c. Significant – The Commission will vote separately for compliance on each standard which has significantly changed.

Once a motion is made and seconded and the discussion has concluded, a roll call vote will be taken as outlined in this section. The Commission will have completed its determination of the acceptability of the model when it has completed voting on all standards. This does not preclude the Commission from revisiting a previous vote.

D. Notification of Acceptability

Once the Commission has determined that a model is acceptable in accordance with the procedures in this process, the Chair of the Commission will provide the modeling company with a letter confirming the Commission's action. The letter shall be in the following form:

(Name and Address of Modeler)

Re: Florida Commission on Hurricane Loss Projection Methodology

Dear _____:

This will confirm the finding of the Florida Commission on Hurricane Loss Projection Methodology on (date), that the (name of company) computer model has been determined acceptable for projecting hurricane loss costs for personal residential rate filings.

The Commission has determined that the (name and version of model) complies with the standards adopted by the Commission on (date of adoption), and concludes that the (name and version of the model) is sufficiently accurate and reliable for projecting hurricane loss costs for residential property in the State of Florida.

In accordance with the Commission's procedures, this determination of acceptability expires on February 28, 2003, unless the modeler has complied with the latest adopted procedures described in the "Process for the determination of acceptability of a computer model" in order to maintain its acceptability.

On behalf of the Commission, I congratulate you and your colleagues. We appreciate your participation and input in this process.

Sincerely,
(Name), Chair

E. Notification of Expiration

A model's acceptability expires when a model which had been determined acceptable under the prior year's standards is determined not acceptable as to the following year's standards. A model's acceptability will also expire under the previous year's standards on February 28 following the November 1 effective date of new and revised standards unless the modeling company has notified the Commission of its compliance with the new and revised standards by February 28. In that case, the previous year's determination of acceptability will remain effective until the conclusion of the determination of acceptability process for the then current standards.

Upon the expiration of a model's acceptability, for whatever reason, the Chair of the Commission shall send a letter to the modeling company informing the company that its acceptability has expired.

The letter shall be in the following form:

(Name and Address of Modeler)

Re: Florida Commission on Hurricane Loss Projection Methodology

Dear _____:

This will confirm the finding of the Florida Commission on Hurricane Loss Projection Methodology on (date), that the Commission's determination of acceptability for the (name of company) computer model under the standards effective (date) has expired as of (date).

The Commission appreciates your participation and input in this process.

Sincerely,
(Name), Chair

Model Submission Checklist

1. Please indicate by checking below that the following has been included in your submission to the Florida Commission on Hurricane Loss Projection Methodology.

Yes	No	Item
		1. Letter to the Commission
		a. states that professionals having credentials and/or experience in the areas of meteorology, statistics, actuarial science, engineering, and computer science have reviewed the model for compliance with the standards
		b. states that model is ready to be reviewed by the Professional Team
		c. any exceptions to the statements above noted with a complete explanation
		d. identifies any changes made to Modules 1, 2, and 3 from the previous year's submission, if applicable
		2. Summary statement of compliance with each individual standard
		3. General description of information to be presented to the Professional Team and to the Commission
		4. Data and analyses required by Module 1
		5. Data and analyses required by Module 2
		6. Data and analyses required by Module 3
		7. Copy of non-proprietary information and documentation the modeler anticipates presenting to the Commission in connection with the Acceptability Process
		8. General description of any proprietary information the modeler intends to present to the Professional Team in connection with the Acceptability Process
		9. Model Identification
		10. Form A
		11. Form B
		a. Excel format
		b. PDF format
		12. Form C
		13. Form D
		a. Excel format
		b. PDF format
		14. Form E
		15. Form F
		a. Excel format
		b. PDF format
		16. Output Ranges
		a. Excel format
		b. PDF format
		c. hard copy included in submission after Form F
		17. 25 Bound Copies
		18. 25 CD ROMs
		a. complete submission in PDF format
		b. data file names include abbreviated name of Modeler and Standards year
		19. Table of Contents
		20. Materials consecutively numbered from beginning to end
		21. All tables, graphs, and other non-text items clearly labeled
		22. All tables, graphs, and other non-text items specifically listed in Table of Contents
		23. Standards and module item numbers in <i>italics</i> , responses in non-italics

2. Explanation of "No" responses indicated above. (Attach additional pages if needed.)

Model Name

Modeler Signature

Date

VI. MODULES

Florida Commission on Hurricane Loss Projection Methodology

Model Identification

Name of Model and Version: _____

Name of Firm: _____

Street Address: _____

City, State, Zip: _____

Mailing Address, if different from above: _____

Contact Person: _____

Phone Number: _____ Fax Number: _____

E-mail Address: _____

Date: _____

MODULE 1

MODULE 1

I. General Description of the Model

(Standards 5.5.1-5.5.8 for all items in this Section)

A. In General

1. Specify the model and program version number reflecting the release date. *(Standard 5.1.3)*
2. Provide a complete and concise description of your model, with a one-page introductory summary. Include a description of your methodology, particularly the wind components, the damage components, and the insured loss components. Indicate where probability distributions have been fit to historical data and demonstrate their agreement. Describe sensitivity and uncertainty analyses used in the development of your model. Describe the computer language/code in which your computer program is written and what type of computer hardware is needed. Specify the details of translation from model structure to program structure.
3. Describe the theoretical basis for your model. Provide precise citations to or, preferably, copies of, the representative or any primary technical papers which help describe the theory underlying your model and which you relied on as to any particular component of the model.
4. Provide classes, objects, and procedures that define how the model is represented and how the domain associated with hurricane catastrophe (including all hurricane-related entities) is mapped to elements in your computer program. Explain all interfaces and coupling assumptions.
5. Provide a list and a description of the model variables and the outputs from your model. In describing the variables, state which are qualitative and which are quantitative. Describe the possible range associated with each variable. Identify differences, if any, in how the model produces loss costs for specific historical events versus loss costs for events in the stochastic hurricane set. Indicate which model variables are critical as determined from a sensitivity analysis or suitable equivalent. The objective is to provide an assessment of the attendant uncertainty in the loss costs produced by meteorological variables (including both occurrence and wind field aspects), vulnerability variables and actuarial variables. *(Standards 5.6.4 and 5.6.5)*
6. Are there methods used in the model to incorporate modification factors to the actuarial functions or characteristics? If so, describe. In particular, to what extent are mitigation factors incorporated in the model. *(Standards 5.4.2 and 5.4.12)*

7. Describe the number of categories of the different vulnerability functions (damage ratios) used within the model. Specifically, include descriptions of the structure types, lines of business, and coverages in which a unique vulnerability function is used. What is the basis for differentiation (e.g., engineering analysis, empirical data, etc.)? (*Standard 5.3.4*)
8. What are the primary or representative documents used or the research results which developed the model's vulnerability functions (damage ratios)? (*Standard 5.3.1*)
9. What efforts have been made to update or revise your model or specific parts of the model? How many times have revisions been made? Discuss which changes you consider substantive and which you consider technical. When did the revisions occur? What specific revisions were made? (*Standard 5.1.3*)
10. Describe methods and procedures available to the model user so that the user may incorporate modifications into the model. (*Standards 5.4.2 and 5.4.4*)

B. Loss Costs

1. Does the model produce the same loss costs if it runs the same information more than once (i.e., not changing the seed of the random number generator)?
2. What is the highest resolution for which loss costs can be provided? What resolution is used for the reported output ranges? Describe how the model handles beach/coastal areas as distinct from inland areas. (*Standard 5.2.6*)
3. How does the model handle deductibles (both flat and percentage), policy limits, replacement costs, and insurance-to-value when estimating loss costs? (*Standard 5.4.8*)
4. Are annual aggregate loss distributions available? What review or tests have been done on these? (*Standards 5.4.1, 5.4.3, and 5.4.4*)
5. How are loss adjustment expenses considered within the loss cost estimates?
6. Can your model distinguish among policy form types, for example, homeowners, dwelling property, mobile home, renters, condominium owners etc., and if so, what are your assumptions? Does your model produce loss costs for different types of policies, for example, structure and contents; loss of use; mobile home; commercial residential; or contents only? Discuss in detail.

C. Other Considerations

1. Describe how your model takes into consideration the following:
 - a. Socio-economic effects resulting from a large catastrophe, both upside as in FEMA mitigation and downside as in labor and material shortages; (*Standards 5.4.3 and 5.4.5*)
 - b. Building code and enforcement differentiation; (*Standards 5.4.7 and 5.4.11*)
 - c. Specific construction characteristics (e.g., use of hurricane shutters); (*Standard 5.4.2*)
 - d. Storm surge and flood damage to the infrastructure.
2. List your input variables for all of the categories in 1 above. (*Standard 5.1.6*)

II. Specific Description of the Model

(*Standards 5.5.1-5.5.8 for all items in this section*)

A. Model Variables

1. Using the list of model variables provided in response to I.A.5 above, describe the source documents and any additional research which was done to develop the model's variable functions or databases. Particularly describe all such information, including a description of the historical database(s), for the model's hurricane wind speeds and hurricane frequencies. Were there any assumptions used in creating any of these databases? Describe how you deviate, if at all, from the Commission's hurricane set. Describe intensities used for these hurricanes. (*Standard 5.6.2*)
2. List the current primary databases used by your model and the aspects of the model to which they relate. Indicate which databases are "public" and which are "proprietary".
3. What are your assumptions in the following areas:
 - a. Meteorological
 - b. Damageability
 - c. Insurance Coverage

How does your model address the issue of demand surge? (*Standards 5.4.1 and 5.4.4*)

4. Are there other major or significant assumptions not listed above? If so, describe. (*Standards 5.4.1 and 5.4.4*)
5. Describe the nature and extent of actual insurance claims data which have been used to develop the model's vulnerability functions (damage ratios). Describe in detail what is included, such as, number of policies, number of insurers, and number of units of dollar exposure; separate into personal lines, commercial, and mobile home. (*Standards 5.4.1 and 5.4.6*)

B. Methodology

1. Specify the wind speed(s) (e.g., one-minute sustained, peak gusts, etc.) used for loss estimation. (*Standards 5.2.4 and 5.2.7*)
2. How is the asymmetric nature of hurricanes considered? (*Standard 5.2.4*)
3. Describe the nature of the filling rate function used. (*Standards 5.2.4 and 5.2.9*)
4. Other than the hurricane's characteristics, what other variables affect the wind speed estimation (e.g., surface roughness, topography, etc.)? Describe the database used for land friction calculation and its compatibility with the friction model. (*Standards 5.2.4 and 5.2.8*)
5. Identify the characteristics (e.g., central pressure, radius of maximum winds, etc.) of a hurricane that are used in estimating wind speeds and how this information is applied for the entire state of Florida. (*Standards 5.2.4 and 5.2.8*)
6. Which variables in the wind speed component are dependent, and how is this dependence incorporated in the model? (*Standard 5.2.4*)
7. Describe how the coastline is segmented (or partitioned) in determining the parameters for hurricane frequency used in the model. Provide the hurricane frequency distribution by intensity for each segment. (*Standards 5.2.3, 5.2.4, 5.2.6, 5.2.7, and 5.6.2*)
8. If stochastic simulation techniques are used, describe how the hurricanes are generated from the underlying probability distributions. How are landfall sites, hurricane paths, and decay rates determined? (*Standards 5.2.3, 5.2.4, and 5.2.7*)
9. Does the model produce confidence intervals for:
 - a. Wind speed estimates given a set of hurricane parameters?
 - b. Damage estimates given a wind speed estimate?
 - c. Annual loss costs?

Characterize the uncertainties in your model, for example, with an uncertainty analysis or suitable equivalent. Uncertainty refers both to possible model misspecifications and inherent random variation. *(Standards 5.6.3 and 5.6.5)*

10. Describe the method or methods used to estimate annual loss costs needed for ratemaking. Identify any source documents used and research performed.
11. What functions or variables does your model consider to be independent? On what are the other functions or variables dependent (including latitude)? Are there limitations on the functions or variables that are a function of latitude? If so, describe. What are the intermediate (endogenous) variables which are part of the calculations between the inputs and outputs described in I.A.5? *(Standard 5.1.4)*
12. Identify the form of the probability distribution used for each function or variable, if applicable. What statistical techniques are used for distributions that are estimates? What tests are used for goodness of fit? *(Standard 5.6.1)*
13. What is the most sensitive aspect of your model? Is this sensitivity based upon a) an assumption, b) an underlying datum unique to your model, or c) a technique which the model employs? Discuss fully and provide an example to illustrate how (to what degree) this sensitivity affects output results. *(Standards 5.1.4, 5.6.4, and 5.6.5)*
14. Are there other aspects of your model that may have a significant impact upon the sensitivity or variation in output results? *(Standards 5.1.4, 5.6.4, and 5.6.5)*
15. What sensitivity and uncertainty analyses have been done on the model's variables? *(Standards 5.1.4, 5.6.4, and 5.6.5)*

C. Validation Tests

1. What were the nature and results of the tests performed to validate the wind speeds generated? *(Standard 5.6.2)*
2. What were the nature and results of the tests performed to validate the expected loss estimates generated? If a set of simulated hurricanes or simulation trials was used to determine these loss estimates, specify the convergence tests which were used and the results. Specify the number of hurricanes or trials which were used. *(Standard 5.4.16)*
3. What were the nature and results of the tests performed to validate the damage estimates generated? *(Standard 5.6.2)*

4. Were insured losses from ancillary perils included within the annual loss cost estimate? If so, describe which perils, the basis for the loss estimation, and the validity testing or peer review which was done on these calculations.
5. What were the nature and results of any validation tests on any other aspects of the model? (*Standard 5.6.2*)
6. Provide documentation of all validation tests performed. (*Standard 5.6.2*)

MODULE 2

MODULE 2

Background/Professionalism

1. Company Background

- A. Describe the ownership structure of your company. Is your company affiliated with any other company? If so, describe the nature of the relationship.
- B. How long has your firm been in existence?
- C. In what year was your model developed?
- D. How long have you been using your model for ratemaking purposes?
- E. In which states have you attempted to use your model for ratemaking purposes? Has your model been accepted for use in any state? If so, what state or states? Provide the Commission with the name of a contact person in all the states where you have previously used your model for ratemaking purposes. (The Commission may contact these persons to discuss your work.)
- F. Describe generally your company's services and the percentage of the company's annual income derived from each.
- G. How long have you used your model for analyzing insurance company exposures or other such uses? Describe these uses.

2. Professional Credentials

(Standard 5.1.2 for all items in this section)

- A. List the names of your technical staff and consultants and indicate their highest degree obtained (discipline and University), their years of experience with hurricane modeling for ratemaking, and their credentials and years of experience in their area of expertise.
- B. Describe the credentials of the individuals or groups involved in the development of the following aspects of the model:
 - 1. Meteorology
 - 2. Vulnerability
 - 3. Actuarial
 - 4. Computer Science
 - 5. Statistics

State whether these persons are full-time employees or outside consultants.

3. Multi-discipline Team

(Standard 5.1.2 for all items in this section)

- A. Indicate the different academic disciplines used to provide input and to construct your model.
- B. Of the disciplines listed above, which are represented by current employees with your firm? Are other disciplines represented through consulting arrangements?
- C. Provide visual business workflow documentation connecting all personnel related to model design, testing, execution, and maintenance.

4. List of Clients

- A. Provide a sample list of your clients in the following categories: for ratemaking, for reinsurance and capital markets, in government. Regarding the ratemaking clients, state the number of clients in this category and the total residential market share, in Florida and nationwide, represented by these clients. For your ratemaking clients, how many clients have a U.S. aggregate annual property and casualty insurance premium of \$100 million or more? Do any of your ratemaking clients have a U.S. aggregate annual property and casualty insurance premium of over \$1 billion? (The Commission may contact these persons or firms to discuss your work.)
- B. Describe the present mix of your clients (ratemaking, reinsurance, capital markets, government, etc.) and whether (and, if so, how) that mix differs from the mix over the last 3 to 5 years.
- C. How long have your ratemaking clients been clients of your company?

5. Independent Expert Review

(Standard 5.1.2 for all items in this section)

- A. What independent peer reviews have been performed on the following parts of the model:
 - 1. Meteorology
 - 2. Vulnerability
 - 3. Actuarial
 - 4. Computer Science
 - 5. Statistics
- B. Provide documentation of independent peer reviews of both the standards and modules and clearly identify any unresolved or outstanding issues as a result of these reviews.
- C. Describe the nature of any on-going or functional relationship your company has with any of the persons performing the independent peer reviews. State which of the peer reviews described above were paid for by your firm and which were

performed for no compensation. Describe any review by an independent organization, such as Standard and Poor's, Moody's, etc.

- D. Discuss any adversarial situations (such as a ratemaking hearing) in which your model was subjected to review.

MODULE 3

MODULE 3

On the following pages are questions and follow-up tests. Answer each question thoroughly and with as much detail as possible. Answers that do not address the question directly may not help the Commission make the appropriate decisions regarding your model.

Your written response and output files must be submitted to the Commission.

NOTE: Answer all questions for your model as your model relates to ratemaking. Answering a question about how your model is used for exposure evaluation purposes or for other uses will lead to confusion. The Commission is solely interested in evaluating your model as a ratemaking tool.

Module 3 - Section I

Meteorology - Hurricane Set

(Standards 5.2.3, 5.2.4, 5.2.6, 5.2.8, and 5.2.9 for all items in this section)

1. Define an “event” in your model. Does it include only hurricanes making landfall (i.e., the eye of the hurricane crosses land) or does it also include any hurricane where hurricane force winds cause damage (i.e., the eye need not necessarily cross land)? *(Standard 5.2.5)*
2. What is the upper limit of wind speeds (maximum one-minute average wind at 10 meters height) per hurricane category (defined by the Saffir-Simpson scale wind speed) that your model produces? *(Standards 5.2.5 and 5.2.7)*

Saffir-Simpson Hurricane Scale

Category	Wind Speed (mph)	Central Pressure (mb)
1	74 - 95	≥ 980
2	96 - 110	965 – 979
3	111 - 130	945 – 964
4	131 - 155	920 – 944
5	> 155	< 920

3. How does your model handle events with multiple landfalls? Are these defined as a single event or multiple events? How does this affect your frequency assumptions? *(Standard 5.2.5)*
4. How does your model handle the definition of an event from the insurance policy perspective? In other words, does it recognize the 72-hour limitation for an occurrence as

defined by some insurance policies? From this perspective, are events with multiple landfalls greater than 72 hours apart considered as two events?

5. Describe the hurricane tracks in your model. Discuss the appropriateness of the hurricane tracks used by your model. What historical data are your hurricane tracks based on?
6. Describe in detail the decay rates or hurricane degradation assumptions used by your model after the hurricane makes landfall. How far inland are hurricane force winds estimated for different category events (as defined by wind speed in the Saffir-Simpson scale)? Does the decay rate vary by region or hurricane segment?
7. Provide a graphical representation of the modeled degradation rates over time compared to the Kaplan-DeMaria decay rate and the +/- 20% range.
8. Name the source of the historical data set used to develop frequency distributions for specific hurricane characteristics. How many years worth of data does the data set contain? Did you make any modifications to the data set? If so, describe in detail the modifications and their appropriateness. (*Standards 5.4.14 and 5.6.1*)
9. Provide ranges for radius of maximum winds, radius of hurricane force winds and far field pressure used by your model for the central pressures provided in **Figure 1**. (*Standard 5.2.7*)

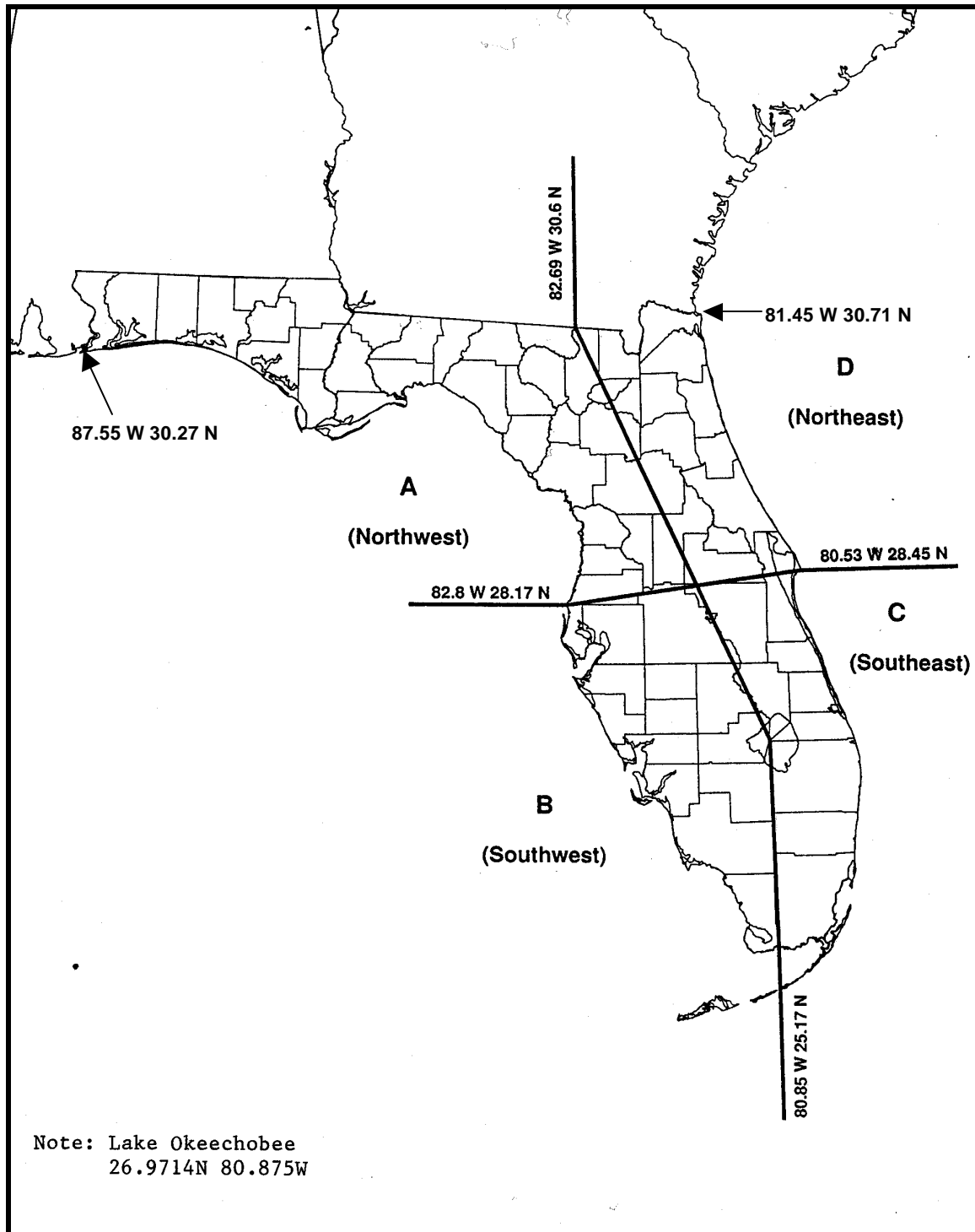
Figure 1

Central Pressure (mb)	Radius of Maximum Winds (mi)	Radius of Hurricane Force Winds (mi)	Far Field Pressure (mb)
900	_____	_____	_____
910	_____	_____	_____
920	_____	_____	_____
930	_____	_____	_____
940	_____	_____	_____
950	_____	_____	_____
955	_____	_____	_____
960	_____	_____	_____
965	_____	_____	_____
970	_____	_____	_____
975	_____	_____	_____
980	_____	_____	_____
985	_____	_____	_____
990	_____	_____	_____

10. Provide maps showing the maximum winds at the zip code level for the modeled 101 year historical storm set and also for a 101 year period from the stochastic storm set.

11. Provide frequency and annual occurrence rates from both the historical data set given and the data set that your model generates by hurricane category (defined by wind speed in the Saffir-Simpson scale) for the entire state of Florida and selected regions as defined in **Figure 2**. (Standard 5.4.14)

Figure 2



12. Complete the following tables in *Figure 3* with modeled information for Florida in total and by region as defined in *Figure 2*. For each region, the column labeled “Hurricanes” is the number of hurricanes that made their initial landfall in that region. The Category is the category (by the Saffir-Simpson Hurricane Scale) of the hurricane at that landfall. The column labeled “Coastal X-ings” is the total number of crossings in that region, either entering land or exiting land, as long as the storm was a hurricane as it crossed. It is counted in the bin for the strength it was as it crossed the land/sea boundary. It includes the initial landfall and all subsequent landfalls as well as exits as long as it was still a hurricane upon exit. List the number of events, the relative frequency (percent of the total) and annual occurrence rate (probability of an event in a given year) per hurricane category.

Figure 3

Entire State of Florida

Cat.	<u>Hurricanes/Coastal X-ings</u>		<u>Relative Frequency</u>		<u>Annual Occurrence Rate</u>	
	Historical	Modeled	Historical	Modeled	Historical	Modeled
1	25/37	/	45%/48%	/	.25/.37	/
2	12/18	/	21%/24%	/	.12/.18	/
3	14/17	/	25%/22%	/	.14/.17	/
4	4/4	/	7%/5%	/	.04/.04	/
5	1/1	/	2%/1%	/	.01/.01	/

Region A – Northwest Florida

Cat.	<u>Hurricanes/Coastal X-ings</u>		<u>Relative Frequency</u>		<u>Annual Occurrence Rate</u>	
	Historical	Modeled	Historical	Modeled	Historical	Modeled
1	11/16	/	64%/67%	/	.11/.16	/
2	4/5	/	24%/21%	/	.04/.05	/
3	2/3	/	12%/12%	/	.02/.03	/
4	0/0	/	0/0	/	0/0	/
5	0/0	/	0/0	/	0/0	/

Region B – Southwest Florida

Cat.	<u>Hurricanes/Coastal X-ings</u>		<u>Relative Frequency</u>		<u>Annual Occurrence Rate</u>	
	Historical	Modeled	Historical	Modeled	Historical	Modeled
1	8/9	/	50%/42%	/	.08/.09	/
2	2/4	/	13%/19%	/	.02/.04	/
3	4/6	/	25%/29%	/	.04/.06	/
4	1/1	/	6%/5%	/	.01/.01	/
5	1/1	/	6%/5%	/	.01/.01	/

Note: Number of Hurricanes does not include By-Passing Storms

Region C – Southeast Florida

Cat.	<u>Hurricanes/Coastal X-ings</u>		<u>Relative Frequency</u>		<u>Annual Occurrence Rate</u>	
	Historical	Modeled	Historical	Modeled	Historical	Modeled
1	6/10	/	27%/37%	/	.06/.10	/
2	5/6	/	23%/22%	/	.05/.06	/
3	8/8	/	36%/30%	/	.08/.08	/
4	3/3	/	14%/11%	/	.03/.03	/
5	0/0	/	0/0	/	0/0	/

Region D – Northeast Florida

Cat.	<u>Hurricanes/Coastal X-ings</u>		<u>Relative Frequency</u>		<u>Annual Occurrence Rate</u>	
	Historical	Modeled	Historical	Modeled	Historical	Modeled
1	0/2	/	0/40%	/	0/.02	/
2	1/3	/	100%/60%	/	.01/.03	/
3	0/0	/	0/0	/	0/0	/
4	0/0	/	0/0	/	0/0	/
5	0/0	/	0/0	/	0/0	/

By-Passing Storms

Cat.	<u>Hurricanes/Regions Affected</u>		<u>Relative Frequency</u>		<u>Annual Occurrence Rate</u>	
	Historical	Modeled	Historical	Modeled	Historical	Modeled
1	1/B	/	20%	/	.01	/
2	2/C,C	/	40%	/	.02	/
3	1/A	/	20%	/	.01	/
4	1/B	/	20%	/	.01	/
5	0	/	0	/	0	/

Note: Number of Hurricanes does not include By-Passing Storms

13. Complete the table in *Figure 4* showing the Probability of Hurricanes by Year.

Figure 4

**MODEL RESULTS
PROBABILITY OF HURRICANES BY YEAR**

NUMBER OF HURRICANES PER YEAR	HISTORICAL PROBABILITY	MODELED PROBABILITY
0	0.57	
1	0.27	
2	0.14	
3	0.02	
4	0.00	
5	0.00	
6	0.00	
7	0.00	
8	0.00	
9	0.00	
10 or more	0.00	

14. Complete the table in *Figure 5* showing the Distribution of Hurricanes by Size. For the Expected Annual Hurricane Losses column, the modeler must present personal residential, zero deductible statewide loss costs based on the 1998 Florida Hurricane Catastrophe Fund's (FHCF) aggregate exposure data found in the file named "**hlpm.exe**". For the column, Return Time (Years) the modeler should indicate the return time associated with an average loss within the ranges indicated on a cumulative basis. For example, if the average loss is \$4,705 million for the range \$4,501 million to \$5,000 million, we are looking for the return time associated with a loss that is \$4,705 million or greater. For each range limit in millions (\$1,001-\$1,500, \$1,501-\$2,000, \$2,001-\$2,500) the average loss within that range will be identified and then the return time associated with that loss will be calculated. The return time is then the reciprocal of the probability of the loss equaling or exceeding this average loss size. The probability of equaling or exceeding the average of each range should be smaller as the ranges increase (and the average losses within the ranges increase). Therefore, the return time associated with each range and average loss within that range should be larger as the ranges increase. We are looking for return times based on cumulative probabilities. A return time for an average loss of \$4,705 million within the \$4,501-\$5,000 million range should be lower than the return time for an average loss of \$5,455 million associated with a \$5,001-\$6,000 million range.

Figure 5

MODEL RESULTS DISTRIBUTION OF HURRICANES BY SIZE

LIMIT RANGE (MILLIONS)			TOTAL LOSS	AVERAGE LOSS (Millions)	NO. OF STORMS	EXPECTED ANNUAL HURRICANE LOSSES*	RETURN TIME (YEARS)
\$ -	To	\$ 500					
\$ 501	To	\$ 1,000					
\$ 1,001	To	\$ 1,500					
\$ 1,501	To	\$ 2,000					
\$ 2,001	To	\$ 2,500					
\$ 2,501	To	\$ 3,000					
\$ 3,001	To	\$ 3,500					
\$ 3,501	To	\$ 4,000					
\$ 4,001	To	\$ 4,500					
\$ 4,501	To	\$ 5,000					
\$ 5,001	To	\$ 6,000					
\$ 6,001	To	\$ 7,000					
\$ 7,001	To	\$ 8,000					
\$ 8,001	To	\$ 9,000					
\$ 9,001	To	\$ 10,000					
\$ 10,001	To	\$ 11,000					
\$ 11,001	To	\$ 12,000					
\$ 12,001	To	\$ 13,000					
\$ 13,001	To	\$ 14,000					
\$ 14,001	To	\$ 15,000					
\$ 15,001	To	\$ 16,000					
\$ 16,001	To	\$ 17,000					
\$ 17,001	To	\$ 18,000					
\$ 18,001	To	\$ 19,000					
\$ 19,001	To	\$ 20,000					
\$ 20,001	To	\$ 21,000					
\$ 21,001	To	\$ 22,000					
\$ 22,001	To	\$ 23,000					
\$ 23,001	To	\$ 24,000					
\$ 24,001	To	\$ 25,000					
\$ 25,001	To	\$ 26,000					
\$ 26,001	To	\$ 27,000					
\$ 27,001	To	\$ 28,000					
\$ 28,001	To	\$ 29,000					
\$ 29,001	To	\$ 30,000					
\$ 30,001	To	\$ 35,000					
\$ 35,001	To	\$ 40,000					
\$ 40,001	To	\$ 45,000					
\$ 45,001	To	\$ 50,000					
\$ 50,001	To	\$ 55,000					
\$ 55,001	To	\$ 60,000					
\$ 60,001	To	\$ 65,000					
\$ 65,001	To	\$ 70,000					
\$ 70,001	To	\$ 75,000					
\$ 75,001	To	\$ 80,000					
\$ 80,001	To	\$ 85,000					
\$ 85,001	To	\$ maximum					
TOTAL			*Personal Residential Zero Deductible statewide loss using FHCF exposure data – file name: hlpm.exe .				

Module 3 - Section II

Hurricane Wind Field

1. What wind values (e.g., peak gust, maximum one-minute average sustained) and for what elevation is your wind field valid? Describe in detail the rationale for using the wind field chosen by your firm.
2. Do you need to convert the wind speeds generated in your wind field model to another form (i.e., from one-minute sustained to peak gust) for use by the vulnerability functions used by your model? If so, is there any accuracy lost by doing so? Describe in detail. (*Standard 5.2.2*)
3. Is the duration of wind speeds at a particular location over the life of a hurricane considered in the model? If so, at what point (or wind speed level) is the damage ratio estimated for wind speeds at a location? Does your model take into consideration both damage caused by gusts of wind and damage caused by sustained winds at perhaps a lower wind speed level? Describe your answers in as much detail as possible.

Module 3 - Section III

Vulnerability Functions Damage Estimates

(Standards 5.3.1, 5.3.2, 5.3.3, and 5.3.4 for all items in this section)

1. At what one-minute average sustained wind speed does your model begin estimating loss?
2. Describe in detail how socio-economic effects are considered (if at all) within your model. Is this applied to every event in your model or limited to select events? If for only select events, how are they selected? If this is not considered directly in your model but only at the request of the insurance company, describe your procedure for including this in the loss estimates. Describe the validation procedures to verify the results. *(Standards 5.4.3 and 5.4.5)*
3. Describe in detail how building code enforcement is considered (if at all) within your model. If this is not considered directly in your model but only at the request of the insurance company, describe your procedure for including this in the loss estimates. Describe the validation procedures to verify the results. *(Standards 5.3.5, 5.4.2, and 5.4.11)*
4. Describe in detail how quality of construction type, materials and workmanship are considered (if at all) within your model. If this is not considered directly in your model but only at the request of the insurance company, describe your procedure for including this in the loss estimates. Describe the validation procedures to verify the results. *(Standard 5.6.2)*
5. Describe in detail how the presence of fixtures or construction techniques designed for hazard mitigation are considered (if at all) within your model. If this is not considered directly in your model but only at the request of the insurance company, describe your procedure for including this in the loss estimates. Describe the validation procedures to verify the results. *(Standard 5.6.2)*
6. Describe in detail your “unknown” vulnerability curve used for unknown residential construction types. If you use a composite of other vulnerability functions, describe how they are derived. Cite the documentation or describe the data used as a basis for this curve. *(Standard 5.3.5)*

Module 3 - Section IV

Insurance Functions Company Loss Estimates

(Standards 5.4.1 and 5.4.4 for all items in this section)

1. A given wind speed can produce a variety of damage within a given zip code. For example, a 10% average damage ratio could result from a wide variety of damages ranging from no damage up to moderate damage. Some properties may have losses that are entirely below the deductible so that total insured losses in the zip code are well below 10%. In a similar manner for more severe wind speeds, some properties within a zip code could have damages in excess of policy limits. How does your model handle this problem? *(Standard 5.4.8)*

2. Provide an example of how insurer loss (loss net of deductibles) is calculated. Discuss data or documentation used to confirm or validate the method used by your model. *(Standard 5.4.8)*

Example:

(A)		(B)	(C)	(D)=(A)*(C)	(E)=(D)-(B)
Building Value	Policy Limit	Deductible	Damage Ratio	Zero Deductible Loss	Loss Net of Deductible
100,000	90,000	500	2%	2,000	1,500

3. Describe in detail the approach used for the appurtenant structures vulnerability function (if it is a unique function). How is it dependent on the building function? Provide documentation of validation test results to verify the approach used. *(Standards 5.3.1, 5.3.2, and 5.6.2)*

4. Describe in detail the approach used for the mobile home vulnerability function. How is it dependent upon other building functions and are there separate mobile home vulnerability functions? Provide documentation of validation test results to verify the approach used. *(Standards 5.3.1 and 5.6.2)*

5. Describe in detail the approach used for the contents vulnerability function. How is it dependent on the building function (e.g., is it a function of building loss or other aspect)? Is there a minimum threshold at which loss is calculated (e.g., loss is estimated when the building damage exceeds 20%)? Provide documentation of validation test results to verify the approach used. *(Standards 5.3.1, 5.3.6, 5.4.9, and 5.6.2)*

6. Describe in detail the approach used for the time element vulnerability function. Does it consider both direct and indirect loss to the building? For example, direct loss is for expenses paid to house policyholders in an apartment while their home is being repaired.

Indirect loss is for expenses incurred (e.g., food spoilage) for loss of power, heat, etc. Is there a minimum threshold at which loss is calculated (e.g., loss is estimated for building damage greater than 20% or only for category 3, 4, 5 events)? Provide documentation of validation test results to verify the approach used. (*Standards 5.3.1, 5.3.6, 5.4.10, and 5.6.2*)

7. Some policies, particularly for contents coverage, provide for indemnity on an actual cash value basis. Identify depreciation assumptions and describe in detail the methods and assumptions used to reduce insured losses on account of depreciation. Provide a sample calculation for determining the amount of depreciation and the ACV losses. (*Standard 5.4.9*)
8. Some policies cover losses that exceed the amount of insurance. Identify property value assumptions and describe in detail the methods and assumptions used to determine the true property value and associated losses. Provide a sample calculation for determining the property value and guaranteed replacement cost losses.
9. Provide five (5) validation comparisons of actual exposures and loss to modeled exposures and loss. These comparisons must be provided by line of insurance, construction type, policy coverage, county or other level of similar detail in addition to total losses. Include not only the loss estimates, but also loss as a percent of total exposure as well. Total exposure represents the total amount of insured values (all coverages combined) in the area affected by the hurricane. This would include exposures for policies that did not have a loss. If this is not available, provide exposures for only these policies that had a loss. Specify which is used. Also, specify the name of the hurricane event compared. (*Standard 5.4.13*)

Example :

Comparison #1
Hurricane = Andrew
Exposure = Total (or Loss only)

Figure 6

	Company Actual			Modeled		
	Exposure	Loss	Loss/ Exposure	Exposure	Loss	Loss/ Exposure
Construction						
Wood Frame	_____	_____	_____	_____	_____	_____
Masonry	_____	_____	_____	_____	_____	_____
Mobile Home	_____	_____	_____	_____	_____	_____
Total	_____	_____	_____	_____	_____	_____

10. Disclose, in a model output report, the specific type of input which is required of insurers in order to use the model or model output in a **personal residential** property insurance rate filing. Such input includes, but is not limited to, optional features of the model, type of data to be supplied by the insurer and needed to derive loss estimates from the model, and any variables which a licensed user is authorized to set in implementing the model.

Include a copy of the input form used by insurers or others to provide input criteria to be used in the model. The information contained in the input form shall be incorporated into the model using standard actuarial and scientific methods. Methods used to include data provided in the input forms shall be disclosed and shall be based upon accepted actuarial and other disciplinary procedures.

All modifications, adjustments, assumptions, defaults, and treatments of missing values shall be fully disclosed in a form to be included with the model output. Modeler shall include in its submission, the output form that discloses any and all modifications, adjustments, assumptions, or other criteria that are included in producing the model output.

Demonstrate that the input form relates directly to the model output. As indicated elsewhere, include the model version number on the forms.

Module 3 - Section V

Average Annual Loss Functions Loss Costs

(Standard 5.4.3 for all items in this section)

1. Provide copies of documentation and reports available to the insurer to be used to analyze loss costs or as supporting documentation in rate filings.
2. In responding to the following questions, demonstrate that the results of the model are reasonably consistent with observed insurance data and other scientifically based observations. Where appropriate, explain possible inconsistencies. Document data sources. *(Standards 5.4.7, 5.4.13, and 5.4.14)*
 - Demonstrate that loss cost relationships by type of coverage (buildings, appurtenant structures, contents, time element) are consistent with actual insurance data.
 - Demonstrate that loss cost relationships by construction type or vulnerability function (frame, masonry, brick, mobile home, etc.) are consistent with actual insurance data.
 - Demonstrate that loss cost relationships between territories or regions are consistent and reasonable.
3. Provide copies of thematic maps (with a minimum of 6 value ranges) displaying zero deductible loss costs by 5-digit zip code for frame, masonry, and mobile home. *(Standard 5.1.7)*
4. The modeling company shall provide to the Commission output ranges in the format shown in the file named **'2001OutPut.xls'** on the enclosed CD-ROM. A hard copy of the output range spreadsheets shall be included with the submission and shall appear as indicated, at the end of Module 3, Section VII, Form F. The company shall also provide the output ranges on CD-ROM in both an Excel and a PDF format as specified. The file name shall include the abbreviated name of the modeler and the Standards year. *(Standard 5.4.15)*

Loss costs shall be provided by county in a format adopted by the Commission. Within each county, loss costs shall be shown separately per \$1,000 of exposure for personal residential, renters, condos, and mobile home; for each major deductible option; and by construction type. For each of these categories using zip code centroids, the output range shall show the highest loss cost, the lowest loss cost, and the weighted average loss cost based on the Florida Hurricane Catastrophe Fund (FHCF) aggregate exposure data provided to each modeler in the file named **"hlpm.exe"** on the enclosed CD-ROM. A file named **"99 FHCF Wts.xls"** has also been provided to be used to determine the weighted average loss costs. Include the statewide range of loss costs (i.e., low, high, and weighted average). For each of the loss costs provided by the modeling company, the company shall identify what that loss cost represents by line of business, deductible option, construction type, and coverages included, i.e., structure, contents, appurtenant

structures, or additional living expenses as specified in the format in the file named “2001OutPut.xls” on the supplied CD-ROM. (*Standard 5.4.14*)

5. Include an explanation of the differences between the prior year and the current year submission (if applicable). (*Standard 5.4.15*)

NOTE: If a modeler has loss costs for a zip code for which there is no exposure, then the modeler should give the loss costs zero weight (i.e., assume the exposure in that zip code is zero). The modeler should provide a list of those zip codes where this happens. If the modeler does not have loss costs for a zip code for which there is some exposure, the modeler should not assume such loss costs are zero. Instead, the modeler should use only those exposures for which it has loss costs in calculating the weighted average loss costs. The modeler should provide a list of those zip codes where the modeler does not have loss costs for a zip code for which there is some exposure. (*Standard 5.4.7*)

6. Provide the monetary contribution to the average annual personal residential zero deductible statewide loss costs from each specific storm in the Official Storm Set. Provide the contribution from Hurricane Andrew for each affected zip code.

Output Range Specifications “Owners” Policy Type

Coverage A: Structure

- Coverage A: Amount of Insurance = \$100,000
- Replacement Cost Included Subject to Coverage “A” Limit
- Ordinance or Law Not Included

Coverage B: Appurtenant Structures

- Amount of Insurance = 10% of Coverage “A” Amount
- Replacement Cost Included Subject to Coverage “B” Limit
- Ordinance or Law not Included

Coverage C: Contents

- Amount of Insurance = 50% of Coverage “A” Amount
- Replacement Cost Included Subject to Coverage “C” Limit

Coverage D: Additional Living Expense

- Amount of Insurance = 20% of Coverage “A” Amount
 - Time Limit = 12 Months
- Loss Costs per \$1,000 should be related to the Coverage “A” Amount.
- For weighting the Coverage “D” Loss Costs, use the file named “99 FHCF Wts.xls” for distribution for Coverage “A”.
- Loss Costs for the various deductibles should be determined based on “per occurrence” deductibles.
- Explain any deviations and differences from the prescribed format above.
- **Specify the model and program version numbers reflecting the release date as a footnote on each page of the output.**

Output Range Specifications “Renters” Policy Type

Coverage C: Contents

- Amount of Insurance = \$25,000
- Replacement Cost Included Subject to Coverage “C” Limit

Coverage D: Additional Living Expense

- Amount of Insurance = 40% of Coverage “C” Amount
 - Time Limit = 12 Months
- Loss Costs per \$1,000 should be related to the Coverage “C” Amount.
- For weighting the Coverage “D” Loss Costs, use the file named **“99 FHCF Wts.xls”** for distribution for Coverage “C”.
- Loss Costs for the various deductibles should be determined based on “per occurrence” deductibles.
- For weighting the Coverage “C” Loss Costs, use the file named **“99 FHCF Wts.xls”** for distribution for Coverage “C”.
- Explain any deviations and differences from the prescribed format above.
- **Specify the model and program version numbers reflecting the release date as a footnote on each page of the output.**

Output Range Specifications “Condo Unit Owners” Policy Type

Coverage A: Structure

- Amount of Insurance = 10% of Coverage “C” Amount
- Replacement Cost Included Subject to Coverage “A” Limit

Coverage C: Contents

- Amount of Insurance = \$50,000
- Replacement Cost Included Subject to Coverage “C” Limit

Coverage D: Additional Living Expense

- Amount of Insurance = 40% of Coverage “C” Amount
 - Time Limit = 12 Months
-
- Loss Costs per \$1,000 should be related to the Coverage “C” Amount.
 - For weighting the Coverage “D” Loss Costs, use the file named **“99 FHCF Wts.xls”** for distribution for Coverage “C”.
 - Loss Costs for the various deductibles should be determined based on “per occurrence” deductibles.
 - For weighting the Coverage “C” Loss Costs, use the file named **“99 FHCF Wts.xls”** for distribution for Coverage “C”.
 - Explain any deviations and differences from the prescribed format above.
 - **Specify the model and program version numbers reflecting the release date as a footnote on each page of the output.**

Output Range Specifications “Mobile Home Owners” Policy Type

Coverage A: Structure

- Coverage “A” Amount of Insurance = \$50,000
- Replacement Cost Included Subject to Coverage “A” Limit

Coverage B: Appurtenant Structures

- Amount of Insurance = 10% of Coverage “A” Amount
- Replacement Cost Included Subject to Coverage “B” Limit

Coverage C: Contents

- Amount of Insurance = 50% of Coverage “A” Amount
- Replacement Cost Included Subject to Coverage “C” Limit

Coverage D: Additional Living Expense

- Amount of Insurance = 20% of Coverage “A” Amount
 - Time Limit = 12 Months
- Loss Costs per \$1,000 should be related to the Coverage “A” Amount
- For weighting the Coverage “D” Loss Costs, use the file named “99 FHCF Wts.xls” for distribution for Coverage “A”.
- Loss Costs for the various deductibles should be determined based on “per occurrence” deductibles.
- Explain any deviations and differences from the prescribed format above.
- **Specify the model and program version numbers reflecting the release date as a footnote on each page of the output.**

Module 3 - Section VI

General

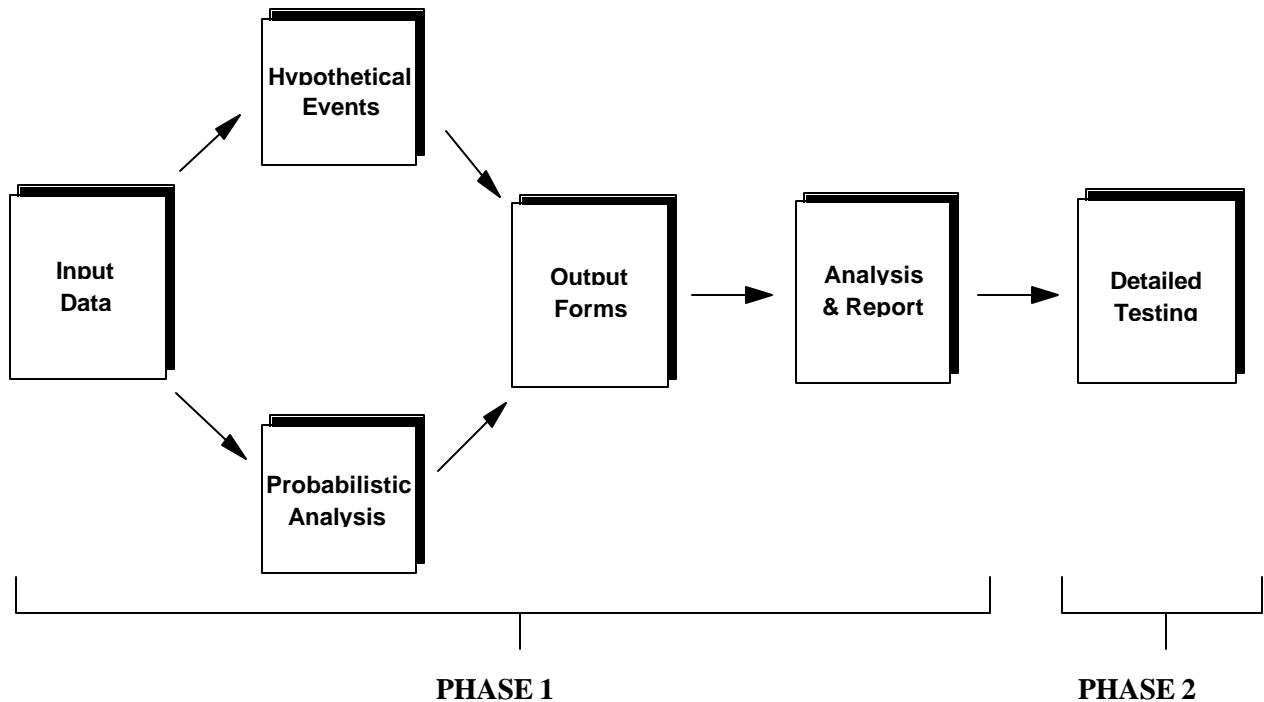
1. Describe in detail how invalid zip codes are handled within your model or modeling practice. Are they deleted from the analysis, allocated, mapped back into the exposure data set, or handled in some other fashion? (*Standard 5.1.5*)
2. Describe what is done to prevent tampering of the computer code by users. How is the security of the model code addressed? (*Standard 5.5.2*)

Module 3 - Section VII

I. Data Flow Chart

Following is a data flow chart depicting the process of evaluating hurricane catastrophe simulation models:

Data Flow Chart



Baseline Tests

(Standards 5.4.3, 5.4.5, 5.4.7, and 5.4.17 for all items in this section)

Sample Input Data

Sample input data has been provided to the modeler on the enclosed CD-ROM in the file named “**inpdat01.xls**”. The Commission is asking that the modeler run various scenario hurricane events (hypothetical and probabilistic) through its model on the sample input exposure data. The attached output forms must be filled out and specified loss files are to be provided to the Commission on CD-ROM in both an Excel and a PDF format. The file names shall include the abbreviated name of the modeler and the Standards year.

This data set consists of one \$100,000 building for each construction type for each zip code in the state of Florida. The data set contains 6,052 records. The following is a description of the fields in the data set:

No.	Field	Description
1.	County Code	Federal Information Processing Standards (FIPS) County Code - see attached description following Form F
2.	Zip Code	5-digit zip code
3.	Construction Type	The following codes will be used: 1 = Wood Frame, 2 = Masonry, 3 = Mobile Home, 4 = Unknown
4.	Deductible	1% policy deductible for all records
5.	Total Insured Value - Building	\$100,000 for all records
6.	Total Insured Value - Appurtenant Structures	\$10,000 for all records
7.	Total Insured Value - Contents	\$50,000 for all records
8.	Total Insured Value - Additional Living Expense	\$20,000 for all records

The modeler is directed to make the following assumptions with the analysis:

- Each structure is insured 100% to value
- Number of stories = 1
- Occupancy type = Single Family Dwelling
- Year of Construction = 1980
- Tide at landfall is 0 meters
- If the model assumes different construction types other than those provided with the data, map the codes the Commission has provided to the appropriate codes. The Commission requests a copy of this mapping and proper documentation describing the reason for the mapping. In addition, the modeler is requested to provide information as to the assumptions made with the unknown construction types by the model.
- Verify that only population weighted centroids were used for the location of risks within the zip code, where more specific locations were not available.

All other assumptions that the modeler must make with the analysis must be reviewed with the Commission staff. The intent is to keep all assumptions consistent among the modelers.

TESTS

Zip Code Data Base - Form A

The accuracy of the model zip code database will be compared to the most current available. Complete *Form A*:

Form A **Zip Code Data Base** (Standard 5.1.5)

Zip Codes used in the model shall be weighted by population.

Describe methods used to verify accuracy of zip code data used. Describe the mapping of the construction codes provided with the data to the construction codes used by the model, if any. Describe how the unknown construction code is handled.

Model zip code database as of _____.
Sample exposure zip codes as of most current available.

	Matched	Unmatched
No. of Records	_____	_____
% of Total Records	_____	_____
Total Exposure	_____	_____
% of Total Exposure	_____	_____

30 Hypothetical Events - Form B (Hypothetical Event Evaluation)

Each modeler is required to model 30 hypothetical events. These events have been specified by the Commission. These events consist of 5 hurricanes, one for each hurricane category 1-5, at 6 different landfall locations; Jacksonville, Fort Pierce, Miami, Ft. Myers, Tampa/St. Petersburg, and Panama City. The Commission is requesting the maximum estimated one-minute sustained 10-meter wind speed associated with the events as well as the estimated loss by coverage type. The purpose of this analysis is to evaluate the consistency of the wind speeds and loss estimates among the models.

A description of the events is contained in the file named “eval2.csv” on the supplied CD-ROM. Provide this information on CD-ROM in both an Excel and a PDF format. The file name shall include the abbreviated name of the modeler and the Standards year. Complete **Form B** using the specified file layout:

Form B **30 Hypothetical Events** (Standard 5.2.5)

Estimated losses are requested in total and by coverage type for the 30 hypothetical events.

No.	Field	Description
1.	Event ID	Event identification 1-30
2.	Category	Saffir-Simpson Hurricane Category 1-5
3.	Central Pressure	Measured in millibars
4.	Radius of Maximum Winds	Measured in statute miles
5.	Forward Speed	Measured in miles per hour
6.	Landfall	Latitude and longitude of event at landfall location
7.	Location	General area of landfall
8.	Direction	Measured in degrees, assuming 0 degrees is north
9.	Radius of Hurricane Force Winds	Measured in statute miles
10.	Maximum Estimated Wind Speed	Maximum estimated one minute average wind speed for this event
11.	Total Estimated Loss	Total estimated loss summarized for building, appurtenant structures, contents and additional living expense
12.	Estimated Building Loss	Total estimated loss for building
13.	Estimated App. Structure Loss	Total estimated loss for appurtenant structures
14.	Estimated Contents Loss	Total estimated loss for contents
15.	Estimated ALE Loss	Total estimated loss for additional living expense

Modeled estimated one-minute average wind speeds produced in **Form B** shall be consistent with central pressure inputs.

One Hypothetical Event - Form C (Hypothetical Event Evaluation)

In addition to the 30 hypothetical events, wind speeds for 336 zip codes have been provided to the modeler by the Commission. This information can be found on the supplied CD-ROM in the file named “eval3.csv”. The wind speeds* and zip codes represent a hypothetical hurricane track. The purpose is to compare the estimated damages by wind speed and construction type. The modeler is instructed to model the sample exposure data against these wind speeds at the specified zip codes and provide the Commission with damage ratios summarized by wind speed (mph) and construction type. If additional assumptions are necessary to complete this form (for example, regarding duration), the modeler shall indicate those used. Complete **Form C**:

**Form C
One Hypothetical Event**

Wind speed* (mph)	Total Loss**/ Subject Exposure
20 – 30	_____
31 – 40	_____
41 – 50	_____
51 – 60	_____
61 – 70	_____
71 – 80	_____
81 – 90	_____
91 – 100	_____
101 – 110	_____
111 – 120	_____
121 – 130	_____
131 – 140	_____
141 – 150	_____
Construction Type	Total Loss**/ Subject Exposure
Wood Frame	_____
Masonry	_____
Mobile Home	_____
Unknown	_____

*Wind speeds are one-minute sustained, ten-meter wind speeds.

**Total loss is the sum of loss to all buildings in that category. For example, the total loss to all buildings affected by 50 knot winds or the total loss to all buildings with wood frame construction.

Loss Costs - Form D (Probabilistic Analysis)

The modeler is instructed to provide loss costs for each construction type for each zip code in the sample data set named “inpdat01.xls”. The following is a description of the requested file layout. Follow the instructions on *Form D* below. Note that fields 1-9 are the exposure fields from the sample data set. Fields 10-13 are for the loss costs (net of deductibles).

Form D Loss Costs

Provide this form along with expected annual loss costs by construction type and coverage for each zip code in the sample data set. There are 1,513 zip codes in the sample data set and 4 construction types; therefore, the completed file should have 6,052 records in total. If there are zip codes in the sample data set that your model does not recognize as “valid”, provide a list of such zip codes and either a) the new zip code to which the original one was mapped, or b) an indication that the insured values from this zip code were not modeled. Furthermore, provide loss cost data using all zip codes provided in the sample data set. In other words, if no losses were modeled, the record should still be included in the completed file with loss costs of zero, and, if a zip code was mapped to a new one, the resulting loss costs should be reported with the original zip code. Provide the results on CD-ROM in both an Excel and a PDF format using the following file layout. The file name shall include the abbreviated name of the modeler and the Standards year.

Order	Field Name	Description
1	Analysis Date	Date of Analysis – YYYY/MM/DD
2	County Code	FIPS County Code
3	Zip Code	5-digit Zip Code
4	Construction Type	Use the following: 1 = Wood Frame, 2 = Masonry, 3 = Mobile Home, 4 = Unknown
5	Deductible	1% (of the Building Value) policy deductible for each record (i.e., 0.01*\$100,000)
6	Building Value	\$100,000 for each record
7	Appurtenant Structures Value	\$10,000 for each record
8	Contents Value	\$50,000 for each record
9	Additional Living Expense Value	\$20,000 for each record
10	Building Loss Cost*	Estimated expected annual loss cost for building divided by the building value modeled for each record (\$100,000)
11	Appurtenant Structures Loss Cost*	Estimated expected annual loss cost for appurtenant structures divided by the appurtenant structures value modeled for each record (\$10,000)
12	Contents Loss Cost*	Estimated expected annual loss cost for contents divided by the contents value modeled for each record (\$50,000)
13	Additional Living Expense Loss Cost*	Estimated expected annual loss cost for additional living expense divided by the additional living expense value modeled for each record (\$20,000)

**Round all loss costs to 6 decimal places*

All deductibles are a percentage of the Building Value and are policy-level deductibles; however, for reporting purposes, the policy deductible should be pro-rated to the individual coverage losses in proportion to the loss.

Example

Assume that a model analyzing Wood Frame properties in zip code 33102 (Miami-Dade County) estimated the following:

Field Name	Value
Analysis Date	1999/11/15
County Code	Miami-Dade County = 86
Zip Code	33102
Construction Type	Wood Frame = 1
Deductible	1% = 0.01*\$100,000 = \$1,000
Building Value	\$100,000
Appurtenant Structures Value	\$10,000
Contents Value	\$50,000
Additional Living Expense Value	\$20,000
Building Loss*	\$10,000
Appurtenant Structures Loss*	\$1,000
Contents Loss*	\$2,500
Additional Living Expense Loss*	\$500

*Represents 1st dollar losses (i.e., prior to application of deductibles)

The \$1,000 policy deductible would be applied as follows:

Deductible	1% = 0.01*\$100,000=\$1,000
Building Loss	\$10,000-[((\$10,000÷\$14,000)x\$1,000)]= \$9,285.71
Appurtenant Structures Loss	\$1,000-[((\$1,000÷\$14,000)x\$1,000)]= \$928.57
Contents Loss	\$2,500-[((\$2,500÷\$14,000)x\$1,000)]= \$2,321.43
Additional Living Expense Loss	\$500-[((\$500÷\$14,000)x\$1,000)]= \$464.29

The reported **Form D** data are shown below:

Field Name	Value
Analysis Date	1999/11/15
County Code	Miami-Dade County = 86
Zip Code	33102
Construction Type	Wood Frame = 1
Deductible	1% = 0.01
Building Value	\$100,000
Appurtenant Structures Value	\$10,000
Contents Value	\$50,000
Additional Living Expense Value	\$20,000
Building Loss Cost	\$9,285.71÷\$100,000 = 0.092857
Appurtenant Structures Loss Cost	\$928.57÷\$10,000 = 0.092857
Contents Loss Cost	\$2,321.43÷\$50,000 = 0.046429
Additional Living Expense Loss Cost	\$464.29÷\$20,000 = 0.023214

Based on the above information, the data should be reported in the following format:

1999/11/15,86,33102,1,0.01,100000,10000,50000,20000,0.092857,0.092857,0.046429,0.023214

Probable Maximum Loss (PML) - Form E (Probabilistic Analysis)

The modeler will provide estimates of loss for various probability levels using the hypothetical data set. The modeler will also provide the annual aggregate and occurrence mean, median and standard deviation for its PML distribution. Complete **Form E**:

Form E
Probable Maximum Loss

Part A

Return Time (years)	Probability of Exceedance	Estimated Loss
Top Event	_____	_____
10,000	0.01%	_____
5,000	0.02%	_____
2,000	0.05%	_____
1,000	0.10%	_____
500	0.20%	_____
250	0.40%	_____
100	1.00%	_____
50	2.00%	_____
20	5.00%	_____
10	10.00%	_____
5	20.00%	_____

Part B

	Annual Aggregate	Occurrence
Mean	_____	_____
Median	_____	_____
Standard Deviation	_____	_____

Hypothetical Events – Form F (Sensitivity and Uncertainty Analysis)

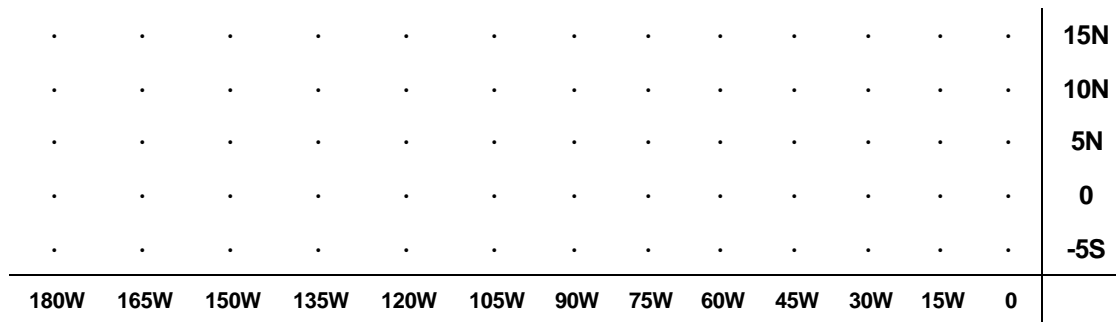
Form F
Hypothetical Events for Sensitivity and Uncertainty Analysis

Wind speeds (in miles per hour for one minute sustained, ten-meter winds) at hourly intervals are requested over a 5×13 grid for the 500 combinations in the Excel file named “inputformF.xls” of the initial conditions of central pressure (in millibars), radius of maximum winds (in miles), forward speed (in miles per hour) and far field pressure (in millibars) for each of three categories of storms (1, 3, and 5) following a straight due West track passing through the point (80.2W, 25.8N). The first 100 combinations will be used in sensitivity analysis calculations, while the remaining 400 combinations will be used for uncertainty assessment. The storms themselves are similar to those in *Form B*, event ID 11, 13, and 15. The first worksheet in this file represents the specifications of initial conditions for a category 5 storm, the second worksheet represents the specifications of the initial conditions for a category 3 storm, and the third worksheet represents the specifications of the initial conditions for a category 1 storm. Depending on the operational model, each of the 500 simulated hypothetical events may not produce a maximum wind speed over the grid within the category given in the Saffir-Simpson scale. However, this is to be expected due to the deviation from the mean levels in a specific simulated event (for example, higher than average central pressure, lower than average far field pressure, slower than average forward speed could lead to a weak storm) and the coarseness of the grid resolution.

The “grid” of points is depicted in *Figure 7* for category 5, *Figure 8* for category 3, and *Figure 9* for category 1. The East-West increments are 15 miles for all three storm categories, while the North-South increments vary as indicated. The North-South increment is 5 miles for category 5, 6 miles for category 3, and 8 miles for category 1. The point (0, 0) is the location of the center of the storm at time 0, and is 15 miles East of the landfall location (80.2W, 25.8N). The exact latitude-longitude location for each of the 65 vertices in the grid (5×13) can be deduced from this set-up.

Figure 7

Grid for Calculating Hourly Wind Velocities, Category 5
Coordinates with respect to Initial Storm Center at (0,0) at time 0

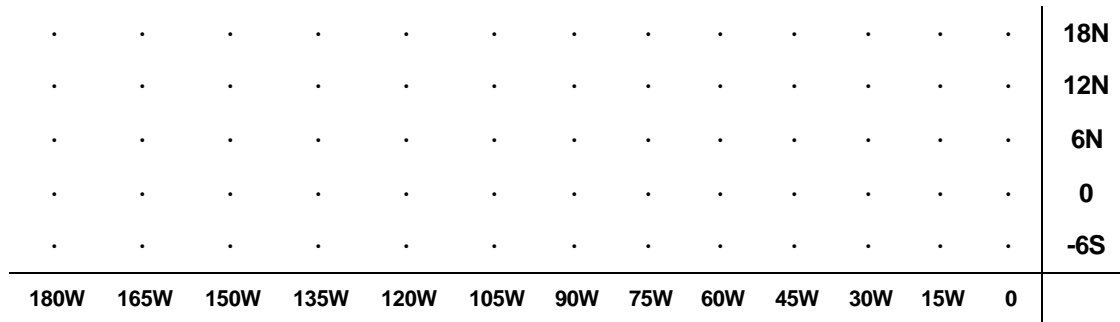


Storm Path from (0, 0) to (180W, 0)



Figure 8

**Grid for Calculating Hourly Wind Velocities, Category 3
Coordinates with respect to Initial Storm Center at (0,0) at time 0**

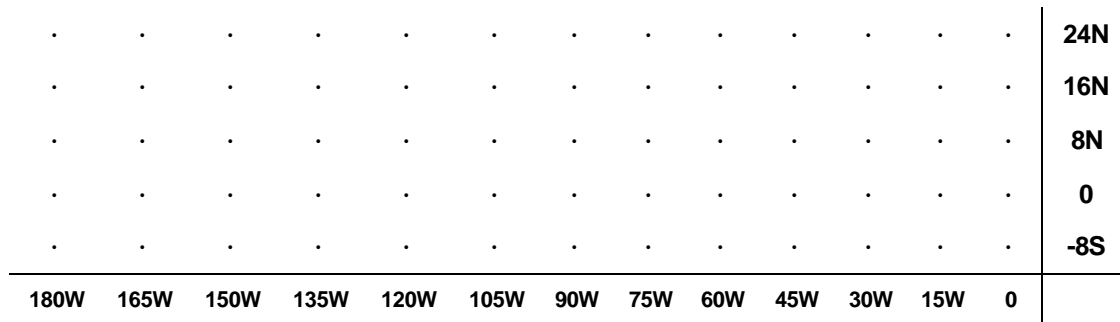


Storm Path from (0, 0) to (180W, 0)



Figure 9

**Grid for Calculating Hourly Wind Velocities, Category 1
Coordinates with respect to Initial Storm Center at (0,0) at time 0**



Storm Path from (0, 0) to (180W, 0)



Output is to be provided on CD-ROM in both an Excel and a PDF format as shown in the file named **“2001FormF.xls.”** The file name shall include the abbreviated name of the modeler and the Standards year.

One sheet is used for each category of storm (Cat5, Cat3, Cat1). The columns in each sheet are:

1. Sample number (1-100)
2. Coded E-W (0, 15, 30, ... , 180)
3. Coded N-S (Category 5: -5, 0, 5, 10, 15;
Category 3: -6, 0, 6, 12, 18;
Category 1: -8, 0, 8, 16, 24)
4. Wind speed at time 0hr

5. Wind speed at time 1hr
6. Wind speed at time 2hr
7. Wind speed at time 3hr
8. Wind speed at time 4hr
9. Wind speed at time 5hr
10. Wind speed at time 6hr
11. Wind speed at time 7hr
12. Wind speed at time 8hr
13. Wind speed at time 9hr
14. Wind speed at time 10hr
15. Wind speed at time 11hr
16. Wind speed at time 12hr

Successful completion of *Form F* demonstrates that the modeler is capable of running an insurance portfolio at a latitude/longitude level directly and at a street address level indirectly with appropriate conversion to latitude/longitude.

Figure 10

Florida County Codes

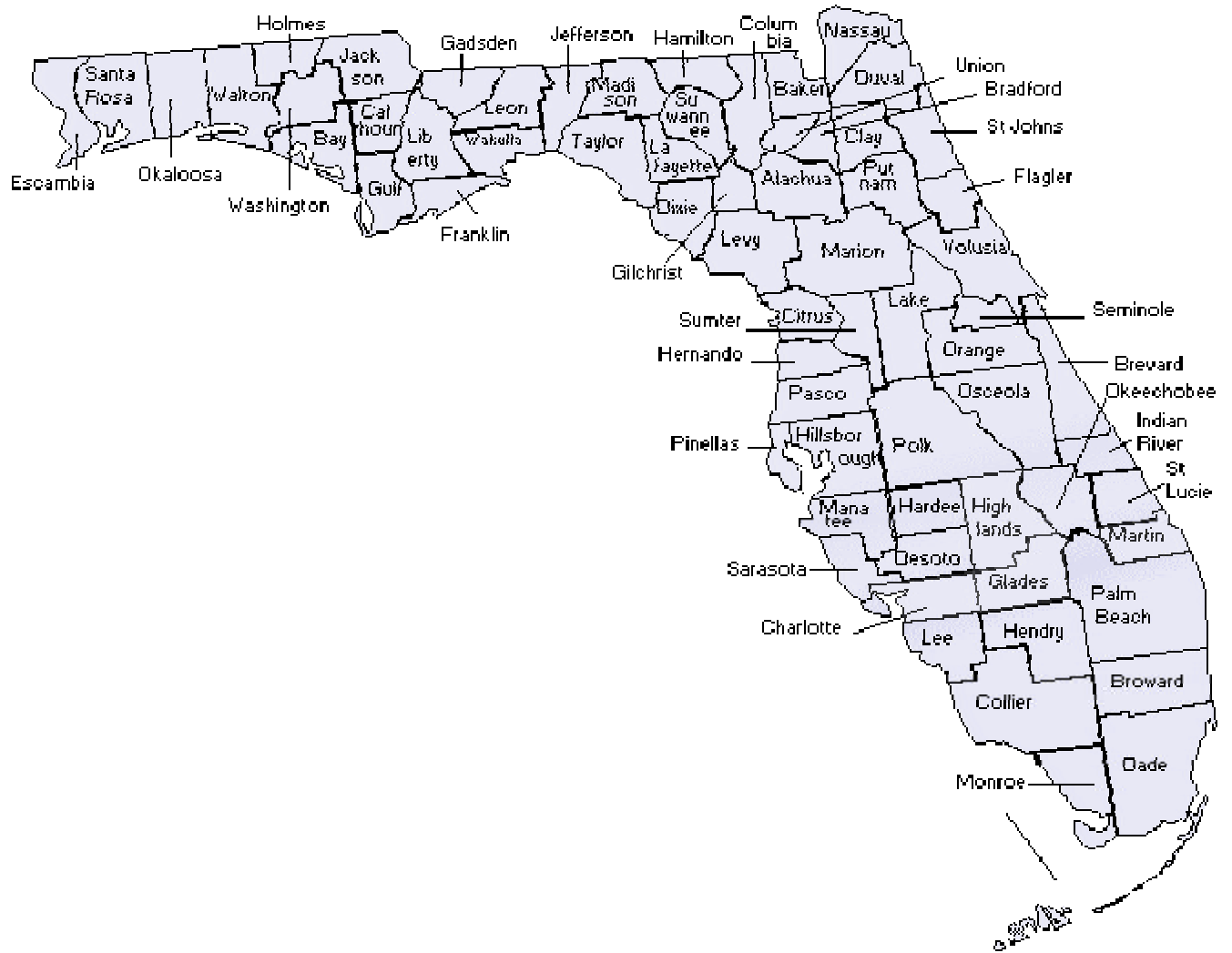
County Code	County Name	County Code	County Name	County Code	County Name
001	Alachua	047	Hamilton	093	Okeechobee
003	Baker	049	Hardee	095	Orange
005	Bay	051	Hendry	097	Osceola
007	Bradford	053	Hernando	099	Palm Beach
009	Brevard	055	Highlands	101	Pasco
011	Broward	057	Hillsborough	103	Pinellas
013	Calhoun	059	Holmes	105	Polk
015	Charlotte	061	Indian River	107	Putnam
017	Citrus	063	Jackson	109	St. Johns
019	Clay	065	Jefferson	111	St. Lucie
021	Collier	067	Lafayette	113	Santa Rosa
023	Columbia	069	Lake	115	Sarasota
025*	Dade	071	Lee	117	Seminole
027	De Soto	073	Leon	119	Sumter
029	Dixie	075	Levy	121	Suwannee
031	Duval	077	Liberty	123	Taylor
033	Escambia	079	Madison	125	Union
035	Flagler	081	Manatee	127	Volusia
037	Franklin	083	Marion	129	Wakulla
039	Gadsden	085	Martin	131	Walton
041	Gilchrist	087	Monroe	133	Washington
043	Glades	089	Nassau		
045	Gulf	091	Okaloosa		

Note: These codes are derived from the Federal Information Processing Standards (FIPS) Codes.

*The FIPS code and description for Dade County was changed to 086, Miami-Dade. The data files provided to the modelers do not reflect this change. Dade County continues to be identified as 025. Modelers should map to the old County Code 025 and if necessary, re-identify 086 to 025.

Figure 11

State of Florida By County



**OUTPUT RANGES SHALL APPEAR HERE
IN THE SUBMISSION**

MODULE 4

Module 4

Professional Team On-Site Review

I. On-Site Review by Professional Team

A. General Purpose

The purpose of the on-site review is to consider verification of the standards. The purpose is not to provide a preliminary peer review of the model. The on-site review by the Professional Team will also involve the following:

1. Due diligence
 - a. The Professional Team will perform a “due diligence” review regarding information submitted by a modeler contained in Modules 1, 2, and 3.
 - b. For existing modelers, the “due diligence” review will concentrate on any changes in Modules 1, 2, and 3 as noted in the notification letter for readiness for the modeler.
 - c. The on-site evaluation will consist of the following components:
 1. On-site Tests – This shall consist of tests of the model under the control and supervision of the Professional Team. The object is to observe the model in operation and the results it produces during a “real time” run. This is necessary in order to avoid the possibility that the modeler could recalibrate the model solely for producing desirable results.
 2. Verification and Inquiry – The interest of the Commission is that due diligence be done to verify that information provided by the modeler in Modules 1-3 is valid and is an accurate and fairly complete description of the model.
2. Audit for compliance with standards
 - a. The Professional Team will begin the review with a briefing of modeling company staff to work out the schedule for the review, and to describe the subsequent audit process.
 - b. The Professional Team will attempt to consider each individual section of the standards as a unit.

- c. After completing its review of each of the standards in a section, the Professional Team will meet privately and then provide immediate feedback to the modeling company.

B. Preparation for On-site Review

1. After the Commission has received a complete submission from the modeling company and prior to the on-site review, at the request of the Commission or the modeler, the FSBA staff will arrange a telephone conference call between the modeling company and the Professional Team or a subset of the Professional Team. The purpose of this call is to review the materials, data files, and personnel that will need to be on-site during the review by the Professional Team. This does not preclude the Professional Team from asking for additional information, during the on-site review, that was not discussed during the conference call. The Professional Team will not make a determination regarding the modeling company's readiness for review, but the conference call will allow the modeling company and the Professional Team the opportunity to clarify any concerns or ask any questions regarding the upcoming on-site review. This conference call will be the only scheduled opportunity for modelers to clarify any questions directly with the Professional Team prior to their on-site review.
2. The Professional Team will assist the Commission and the FSBA staff in determining if the modeling company is ready for an on-site review.
3. During the telephone conference call, the Professional Team will assist the modeling company in preparing for the on-site review by responding to requests for clarifications of the due diligence and audit requirements and any materials which the Professional Team has stated should be available, according to the Guidebook, during the review.
4. The FSBA staff is responsible for scheduling on-site review dates and the subsequent post-audit Commission meetings for the review of the model. Each modeler will be notified at least two weeks prior to the scheduled review. The actual length of the review may vary depending on the preparedness of the modeler and the depth of the inquiry needed for the Professional Team to obtain an understanding of the model.
5. The modeler shall have all necessary materials and data on site for review by the Professional Team.

C. Post On-site Review

1. After completing its review of Modules 1, 2, and 3 and all of the standards, the Professional Team will conduct an exit briefing with the modeling company. During this briefing, the Professional Team will provide to the modeling company a preliminary draft of the report to be provided to the Commission. This offers the modeler an opportunity to

check for any factual errors and to expunge any confidential or proprietary information. The Professional Team will accede to modeling company suggestions for changes in its draft only to correct factual errors and to remove any confidential or proprietary information. The format for the report is as follows:

- Introduction section: what occurred on-site
 - On-site test results
 - Verification of modeler responses provided in Modules 1, 2, and 3
 - Verification of modeler responses to the standards
 - Additional information which the Modeler is willing to make public
 - Suggestions for Model Specifications, Standards, and Guidelines.
2. After leaving the modeling company premises, the Professional Team, in coordination with FSBA staff, will finalize its report and provide it to all Commission members in advance of the meeting scheduled for the Commission's review of the model.
 3. It is possible that a subset of the standards or changes made to Modules 1, 2, or 3 may require further on-site review by a subset of the Professional Team. In such cases, the FSBA staff will arrange a follow-up on-site review, in accordance with the Acceptability Process, to ascertain compliance to those standards and/or modules.

II. Composition and Selection of the Professional Team

On-site reviews of the modeling companies seeking a determination of acceptability by the Commission will be conducted by a team of professional individuals known as the "Professional Team". The Professional Team will consist of individuals having professional credentials in the following disciplines (each area will be represented by one or more individuals): Actuarial Science, Statistics, Meteorology, Computer Science, and Engineering.

The Florida State Board of Administration (FSBA) staff will select the Professional Team members and the FSBA will enter into contracts with each individual selected.

Selection of the Professional Team members will be an aggressive recruiting process to seek out qualified individuals who are capable of working closely with the Commission and who are available during specified time frames in order that the Commission can meet its deadline(s). Consideration will be given to the following factors:

- Professional credentials and experience
- Reasonableness of fees
- Availability
- References

III. Responsibilities of the Professional Team

A. Team Leader

The FSBA staff will designate one member of the Professional Team as the team leader. The team leader will be responsible for coordinating the activities of the Professional Team and overseeing the development of reports to the Commission.

B. Responsibilities of the Team Members for the On-Site Review

1. Participate in preparations and discussions with the Commission and the FSBA staff prior to the on-site review.
2. Study, review, and develop an understanding of responses and materials provided to the Commission by the modelers.
3. Participate with the Commission and the FSBA staff in developing, reviewing, and revising Module 3 tests and evaluations.
4. While on-site, verify, evaluate, and observe the techniques and assumptions used in the model for each member's area of expertise.
5. Identify and observe how various assumptions affect the model so as to identify to the Commission various sensitive components/aspects of the model.
6. Discuss the model with the modeler's professional staff to gain a clear understanding and confidence in the operation of the model and its description as provided to the Commission.
7. Participate in the administration of on-site tests.
8. Participate in the preparation of written reports and presentations to the Commission.

IV. Responsibilities of the FSBA Staff

The Professional Team will report to designated FSBA staff. The FSBA staff will supervise the Professional Team and coordinate their pre-on-site planning activities, on-site reviews and activities, and post-on-site activities.

These responsibilities include:

- A. Setting up meetings with Professional Team members individually and as a group. These meetings will include conference calls and other meetings depending on circumstances and needs of the Commission.
- B. Coordinating and scheduling on-site reviews.

- C. Working with the Commission and Professional Team members in developing, reviewing, and revising Module 3 tests and evaluations.
- D. Overseeing the supervision and administration of specified on-site tests and evaluations.
- E. Working with the modeler to determine which professionals at the modeler's firm will work with corresponding Professional Team members while on-site.
- F. Briefing and de-briefing the Professional Team members prior to, during, and after the on-site review.
- G. Coordinating the preparation of written reports and presentations to the Commission.

V. Confidential and Proprietary Information

While on-site, the Professional Team members are expected to have access to confidential and proprietary data and information.

It is the responsibility of the modeling company to identify to all Professional Team members what is considered proprietary or confidential and is not to be made public. Upon arrival of the Professional Team on-site, the modeler shall provide a written list of all items they intend the Professional Team to review. The modeler shall mark any item proprietary, as appropriate. This does not preclude the Professional Team from requesting any additional information.

All written documentation provided by the modeling company to the Commission will be considered a public document. As such, it will be available for public scrutiny. The preferred approach is that the modeling company provide any such additional information directly to the Commission rather than give it to Professional Team members to be brought back with them.

Documents that the modeling company indicates are proprietary or confidential which are viewed by Professional Team members will not be considered public documents and are to be left on-site. Any notes made by Professional Team members are not considered public documents and are to be kept confidential with respect to proprietary information or trade secrets learned on-site.

Any notes made by a Professional Team member relating to confidential information or data that would compromise the proprietary nature of a model or reveal trade secrets are not to be made available to Commission members for their review.

Proprietary information or trade secrets of the modeler learned by a Professional Team member will not be discussed with Commission members.

Professional Team members will agree to respect the proprietary nature of a model and not use confidential information in any way detrimental to the interest of the modeling firm.

Care will be taken by the Professional Team members not to discuss other models being evaluated while they are on-site reviewing a particular model.

The Professional Team will present the results of the on-site review to the Commission and answer questions related to their review.

The job of the Professional Team is to verify information and make observations. It is not part of the Professional Team's responsibilities to opine or draw conclusions about the appropriateness of a particular model or a component part of a model.

MODULE 5

Module 5

Modeler Presentations and Discussion of Issues with the Commission

I. How the Modeler Presentations will be Conducted

- A. New Model Presentation – The presentation should focus on details and issues related to each model as used for residential rate making purposes.

Existing Model Presentation – The presentation should focus on, but not be limited to, changes from the previously accepted model.

- B. The modeler presentations should serve to enlighten the Commission regarding various issues that have arisen throughout the entire evaluation process - Module 1, Module 2, Module 3, Module 4, and compliance with the standards. The various issues may relate to:
1. Informational needs of the Commission
 2. The theoretical soundness of the model
 3. Use of reasonable assumptions
 4. Other related aspects dealing with accuracy or reliability.
- C. The modeler presentation shall include an explanation of corrections made for deficiencies noted by the Commission.
- D. The modeler presentations are for the purpose of helping the Commission understand outstanding issues and to communicate as to how the model meets the standards.

II. The Development of Issues for Discussion

- A. Commission members will review the modeler responses and report of the Professional Team, create a list of issues, and submit them to the Chair. The list of issues should be in the following format: (1) issues related to Module 1; (2) issues related to Module 2; (3) issues related to Module 3; (4) issues related to Module 4; and (5) suggestions for standards and guidelines. It might also be useful for the Commission members to divide the issues associated with each module into those that are of a general concern and those that concern the Commission member's area of expertise.
- B. The staff will create a list of issues developed from (1) Commission member comments, (2) a review of the responses to the modules, (3) the follow up questions, (4) data provided from the modelers, and (5) issues arising out of the Professional Team's report.

- C. The final list of issues will be sent to the modeler at least two weeks prior to the presentation. The modeler will provide the staff with a written response to the list of issues one week prior to the presentation. The staff will provide the written response from the modelers to the Commission members and the Professional Team members prior to the presentation.

2001 STANDARDS - MODULES CROSS REFERENCE

2001 Standards - Modules Cross Reference

	Module 1 Section I	Module 1 Section II	Module 2	Module 3
General	5.1.1			
	5.1.2		2, 3, 5	
	5.1.3	A1, A9		
	5.1.4		B11, B13, B14, B15	
	5.1.5			VI #1, Form A
	5.1.6	C2		
	5.1.7			V #3

Meteoro- logical	5.2.1			
	5.2.2			II #2
	5.2.3		B7, B8	I
	5.2.4		B1-8	I
	5.2.5			I #1, #2, #3, Form B
	5.2.6	B2	B7	I
	5.2.7		B1, B7, B8	I #2, #8
	5.2.8		B4, B5	I
	5.2.9		B3	I

Vulnerability	5.3.1	A8		III, IV #3, #4, #5, #6
	5.3.2			III, IV #3
	5.3.3			III
	5.3.4	A7		III
	5.3.5			III #3, #6
	5.3.6			IV #5, #6
	5.3.7			

Actuarial	5.4.1	B4	A3, A4, A5	IV
	5.4.2	A6, A10, C.1.c		III #3
	5.4.3	B4, C.1.a		III #2,V, VII
	5.4.4	A10, B4	A3, A4	IV
	5.4.5	C.1.a		III #2, VII
	5.4.6		A5	
	5.4.7	C.1.b		V #2, #5, VII
	5.4.8	B3		IV #1, #2
	5.4.9			IV #5, #7
	5.4.10			IV #6
	5.4.11	C.1.b		III #3
	5.4.12	A6		
	5.4.13			IV #9; V #2
	5.4.14			I #7, #10; V #2, #4
	5.4.15			V #4, #5
	5.4.16		C2	
	5.4.17			VII

2001 Standards - Modules Cross Reference

		Module 1 Section I	Module 1 Section II	Module 2	Module 3
Computer	5.5.1	A,B,C	A,B,C		
	5.5.2	A,B,C	A,B,C		VI #2
	5.5.3	A,B,C	A,B,C		
	5.5.4	A,B,C	A,B,C		
	5.5.5	A,B,C	A,B,C		
	5.5.6	A,B,C	A,B,C		
	5.5.7	A,B,C	A,B,C		
	5.5.8	A,B,C	A,B,C		
Statistical	5.6.1		B12		I #7
	5.6.2		A1, B7, C1, C3, C5, C6		III #4, #5; IV #3#6
	5.6.3		B9		
	5.6.4	A5	B13, B14, B15		
	5.6.5	A5	B9, B13, B14, B15		

Disclaimer: This cross reference is intended to be as complete as possible. However, if errors or omissions have occurred, report this to Commission staff for correction in subsequent editions.

**VII. COMPLIANCE WITH THE
STANDARDS AND RELATED
INFORMATION**

2001 STANDARDS

2001 Standards

5.1 General Standards

5.1.1 Scope of the Computer Model and Its Implementation

The computer model shall project loss costs for personal lines residential property from hurricane events, excluding flood and storm surge, except as flood and storm surge apply to Additional Living Expense (ALE). References to the model throughout the Standards shall include its implementation.

5.1.2 Qualifications of Modeler Personnel and Independent Experts

Model construction, testing, and evaluation shall be performed by modeler personnel or independent experts who possess the necessary skills, formal education, or experience to develop hurricane loss projection methodologies.

The model or any modifications to an accepted model shall be reviewed by modeler personnel or independent experts in the following professional disciplines, if relevant: structural/wind engineering (licensed Professional Engineer (PE)), statistics (advanced degree), actuarial science (Associate or Fellow of Casualty Actuarial Society or Member of the American Academy of Actuaries), meteorology (advanced degree), and computer science/engineering (advanced degree). These individuals shall abide by the standards of professional conduct adopted by their profession.

Reference: Module 2, Section I, #2-#3

Reference: Module 2, Section I, #5

5.1.3 Modelers Policy of Model Revision

The modeler shall have developed and implemented a clearly written policy for model revision with respect to methodologies and data. The modeler shall clearly identify the model version under review. Any revision to any portion of the model that results in a change in any Florida residential hurricane loss cost must be accompanied by a new model version number.

Reference: Module 1, Section I, A.1

Reference: Module 1, Section I, A.9

5.1.4 Independence of Model Components

The meteorology, vulnerability, and actuarial components of the model shall each be demonstrated to be theoretically sound without compensation for potential bias from the other two components. Relationships within the model among the meteorological, vulnerability, and actuarial components shall be demonstrated to be reasonable.

Reference: Module 1, Section II, B.11

Reference: Module 1, Section II, B.13-15

Reference: Standard 5.5.3

5.1.5 Risk Location

Zip codes used in the model shall be updated at least every 24 months using information originating from the United States Postal Service. The date of the updated information shall be disclosed.

Zip code centroids, when used in the model, shall be based upon population data and shall be visually demonstrated to be reasonable.

Zip code information purchased by the modeler shall be verified by the modeler for accuracy and appropriateness.

Reference: Module 3, Section VI, #1

Reference: Module 3, Form A

5.1.6 Identification of Units of Measure of the Model

All units of measure for model inputs and outputs shall be clearly identified.

Reference: Module 1, Section I, C.2

5.1.7 Visual Presentation of Data

Visualizations shall be accompanied by legends and labels for all elements. Individual elements shall be clearly distinguishable, whether presented in original or copy form.

- a. For data indexed by latitude and longitude, by county or by zip code, a color contour map and a continuous tone map with superimposed county and zip code boundaries shall be produced.
- b. Florida Map Colors: Maps will use two colors, blue and red, along with shades of blue and red, with dark blue and dark red designating the lowest and highest quantities, respectively. The color legend and associated map shall be comprised of an appropriate number of intervals to provide readability.

Reference: Module 3, Section V, #3

5.2 Meteorological Standards

5.2.1 Units of Measure for Model Output

All model outputs of length, wind speed, and pressure shall be in units of statute miles, statute miles per hour, and millibars, respectively.

5.2.2 Damage Function Wind Inputs

Wind inputs to the damage function shall be in units consistent with currently used wind measurement units and/or shall be converted using standard meteorological/engineering conversion factors which are supported by literature and/or documented measurements available to the Commission.

Reference: Module 3, Section II, #2

5.2.3 Official Hurricane Set or Suitable Approved Alternatives

Modelers shall include in their base storm set all hurricanes, including by-passing hurricanes, which produce hurricane force winds in Florida. The storm set, derived from the Tropical Prediction Center/National Hurricane Center (TPC/NHC) document *Tropical Cyclones of the North Atlantic Ocean, 1871-1998*, updated through the 2000 hurricane season and/or the HURDAT (HURricane DATa) data set, is found in the *Report of Activities as of November 1, 2001* under Section VII, Compliance With Standards and Related Information, #4. All proposed alternatives to the characteristics of specific storms in the storm set shall be subject to the approval of the Commission.

Reference: Module 1, Section II, B.7-8

Reference: Module 3, Section I

5.2.4 Hurricane Characteristics

Methods for depicting all modeled hurricane characteristics (e.g., wind speed, minimum central pressure, radius of maximum winds, strike probabilities, and tracks) shall be based on information documented by scientific literature or modeler information accepted by the Commission.

Reference: Module 1, Section II, B.1-8

Reference: Module 3, Section I

Reference: Standard 5.6.2

5.2.5 Landfall Intensity

Models shall use maximum one-minute sustained 10-meter wind speed when defining hurricane landfall intensity. This applies both to the base storm set adopted in 5.2.3 used to develop landfall strike probabilities as a function of coastal location and to the modeled winds in each hurricane which causes damage. The associated maximum one-minute sustained 10-meter wind speed shall be within the range of wind speeds (in statute miles per hour) categorized by the Saffir-Simpson scale.

Saffir-Simpson Hurricane Scale:

A scale from 1 to 5 that measures hurricane intensity.

Category	Winds (mph)	Central Pressure (MB)	Damage
1	74 - 95	≥ 980	Minimal
2	96 - 110	965 - 979	Moderate
3	111 - 130	945 - 964	Extensive
4	131 - 155	920 - 944	Extreme
5	Over 155	< 920	Catastrophic

Reference: Module 3, Section I, #1-3

Reference: Module 3, Form B

Reference: Standards 5.6.2 and 5.6.3

5.2.6 Hurricane Probabilities

Modeled hurricane probabilities shall reasonably match the historical record through 2000 for category 1 to 5 hurricanes, shall be consistent with those observed for each geographical area of Florida, and shall be displayed in vertical bar graphs. “Consistent” means: (1) spatial distributions of modeled hurricane probabilities shall accurately depict vulnerable coastlines in Florida; and (2) probabilities are compared with observed hurricane frequency using methods documented in accepted scientific literature or proposed by the modeler and accepted by the Commission.

Reference: Module 1, Section I, B.2

Reference: Module 1, Section II, B.7

Reference: Module 3, Section I

Reference: Standards 5.6.2 and 5.6.3

5.2.7 Hurricane Probability Distributions

Modeled probability distributions for hurricane intensity, eye diameter, forward speed, radii for maximum winds, and radii for hurricane force winds shall be consistent with historical hurricanes in the Atlantic basin as documented in accepted scientific literature available to the Commission.

Reference: Module 1, Section II, B.1

Reference: Module 1, Section II, B.7-8

Reference: Module 3, Section 1, #2

Reference: Module 3, Section 1, #8

Reference: Standards 5.6.2 and 5.6.3

5.2.8 Land Friction

Land friction shall be used in the model to reduce wind speeds over land, shall be based on scientific methods, and shall provide realistic wind speed transitions between adjacent zip codes, counties, and territories. The magnitude of friction coefficients shall be consistent with accepted scientific literature, consistent with geographic surface roughness, and shall be implemented with appropriate geographic information system data.

Reference: Module 1, Section II, B.4-5

Reference: Module 3, Section I

5.2.9 Hurricane Overland Weakening Rate

The hurricane overland weakening rate used by the model shall be bounded by the observed extremes in historical records for Florida. The mean wind speed shall be within twenty percent (20%) of the Kaplan/DeMaria decay value or an alternative acceptable to the Commission.

Reference: Module 1, Section II, B.3

Reference: Module 3, Section I

5.3 Vulnerability Standards

5.3.1 Derivation of Vulnerability Functions

The method of derivation of the vulnerability functions shall be described and demonstrated to be theoretically sound.

Development of the vulnerability functions is to be based on one or more of the following: (1) historical data; (2) tests; (3) structural calculations; (4) expert opinion. Any development of the vulnerability functions based on structural

calculations and/or expert opinion shall be supported by tests and historical data to the extent such data are available.

Reference: Module 1, Section I, A.8

Reference: Module 3, Section III

Reference: Module 3, Section IV, #3-6

Reference: Standard 5.6.2

5.3.2 Required Vulnerability Functions

Vulnerability functions shall separately compute damages for building structures, mobile homes, appurtenant structures, contents, and additional living expense.

Reference: Module 3, Section III

Reference: Module 3, Section IV, #3

5.3.3 Wind Speeds Causing Damage

Damage associated with a declared hurricane event shall include damage incurred for wind speeds above and below the hurricane threshold of 74 mph. The minimum wind speed that generates damage shall be specified.

Reference: Module 3, Section III

5.3.4 Construction Characteristics

In the derivation and application of vulnerability functions, assumptions concerning construction type and construction characteristics shall be demonstrated to be reasonable and appropriate.

Reference: Module 1, Section I, A.7

Reference: Module 3, Section III

5.3.5 Modification Factors

Modification factors to the vulnerability functions or structural characteristics and their corresponding effects shall be disclosed and shall be clearly defined and their theoretical soundness demonstrated.

Reference: Module 3, Section III, #3

Reference: Module 3, Section III, #6

5.3.6 Additional Living Expenses

In the estimation of Additional Living Expenses (ALE), the model shall consider hurricane damage including storm surge damage to the infrastructure.

The Additional Living Expense vulnerability function shall consider the time it will take to repair/reconstruct the home.

Reference: Module 3, Section IV, #5-6

5.3.7 Mitigation Measures

Modeling of mitigation measures to improve a building's wind resistance and the corresponding effects on vulnerability shall be disclosed and demonstrated to be theoretically sound.

5.4 Actuarial Standards

5.4.1 Underwriting Assumptions

When used in the modeling process or for verification purposes, adjustments, edits, inclusions, or deletions to insurance company input data used by the modeler shall be based upon accepted actuarial, underwriting, and statistical procedures. The methods used shall be documented in writing.

For damage estimates derived from historical insured hurricane losses, the assumptions in the derivations concerning (1) construction characteristics, (2) policy provisions, and (3) relevant underwriting practices underlying those losses shall be identified and demonstrated to be reasonable and appropriate.

Reference: Module 1, Section I, B.4

Reference: Module 1, Section II, A.3-5

Reference: Module 3, Section IV

5.4.2 Actuarial Modifications

All modification factors to the actuarial functions or characteristics including but not limited to building code, quality, age, occupancy, stories, or condition of structure and their corresponding affects shall be disclosed and shall be clearly defined and their actuarial soundness demonstrated. The disclosure of modification shall include a description of the impact upon loss costs of the modification in accordance with the following:

- A: < -50%
- B: -50% to -25%
- C: -25% to 0
- D: 0 to 25%
- E: 25% to 50%
- F: > 50%

Reference: Module 1, Section I, A.6

Reference: Module 1, Section I, A.10

Reference: Module 1, Section I, C.1.c

Reference: Module 3, Section III, #3

5.4.3 Loss Cost Projections

Loss cost projections produced by hurricane loss projection models shall not include expenses, risk load, investment income, premium reserves, taxes, assessments, or profit margin. Hurricane loss projection models shall not make a prospective provision for economic inflation.

Reference: Module 1, Section I, B.4

Reference: Module 1, Section I, C.1.a

Reference: Module 3, Section III, #2

Reference: Module 3, Section V

Reference: Module 3, Section VII

5.4.4 Insurer Inputs

The modeler shall disclose any assumptions, fixed and variable, that relate to insurer input. Such assumptions shall be demonstrated to be actuarially sound. Assumptions that can vary by specific insurer shall be disclosed in a model output report. Fixed assumptions, that do not vary, need to be disclosed to the Commission.

Reference: Module 1, Section I, A.10

Reference: Module 1, Section I, B.4

Reference: Module 1, Section II, A.3-4

Reference: Module 3, Section IV

5.4.5 Demand Surge

Loss cost projections shall not explicitly include demand surge. Any adjustment to the model or historical data to remove implicit demand surge, shall be disclosed and shall be demonstrated to be reasonable.

Reference: Module 1, Section I, C.1.a

Reference: Module 3, Section III, #2

Reference: Module 3, Section VII

5.4.6 Loss Costs - Meaning of “Damage”

In calculating loss costs, damage shall be expressed as insurable losses.

Reference: Module 1, Section II, A.5

5.4.7 Logical Relation to Risk

Loss costs shall not exhibit an illogical relation to risk, nor shall loss costs exhibit a significant change when the underlying risk does not change significantly.

1. Loss costs produced by the model shall be positive and non-zero for all zip codes.
2. Modelers shall produce color-coded maps for the purpose of comparing loss costs by five-digit zip code within each county and on a statewide basis.
3. Loss costs cannot increase as friction or roughness increase, all other factors held constant.
4. Loss costs cannot increase as the quality of construction type, materials and workmanship increases, all other factors held constant.
5. Loss costs cannot increase with the presence of fixtures or construction techniques designed for hazard mitigation, all other factors held constant.
6. Loss costs shall decrease as deductibles increase, all other factors held constant.
7. Loss costs cannot increase as the quality of building codes and enforcement increases, all other factors held constant.

The above tests are intended to apply in general. There may be certain anomalies that are insignificant or are explainable by special circumstances. This standard applies separately to each coverage.

Reference: Module 1, Section I, C.1.b
Reference: Module 3, Section V, #2
Reference: Module 3, Section V, #5
Reference: Module 3, Section VII

5.4.8 Deductibles and Policy Limits

The model shall provide a mathematical representation of the distribution of losses to reflect the effects of deductibles and policy limits, and the modeler shall demonstrate its actuarial soundness.

Reference: Module 1, Section I, B.3
Reference: Module 3, Section IV, #1-2
Reference: Standard 5.6.2

5.4.9 Contents

The model shall provide a separate mathematical representation of contents loss costs, and the modeler shall demonstrate its actuarial soundness.

Reference: Module 3, Section IV, #5
Reference: Module 3, Section IV, #7
Reference: Standard 5.6.2

5.4.10 Additional Living Expenses (ALE)

The model shall provide a separate mathematical representation of Additional Living Expense (ALE) loss costs, and the modeler shall demonstrate its actuarial soundness.

Reference: Module 3, Section IV, #6
Reference: Standard 5.6.2

5.4.11 Building Codes

Information upon which building code quality and enforcement is assessed, if incorporated in the model, shall be objective and reasonably accurate and reliable.

Reference: Module 1, Section I, C.1.b
Reference: Module 3, Section III, #3
Reference: Standard 5.6.2

5.4.12 Hazard Mitigation

Data or information upon which differences in loss costs due to fixtures, design features, or construction techniques designed for hazard mitigation are derived, if incorporated in the model, shall be objective and actuarially reasonable.

Reference: Module 1, Section I, A.6

5.4.13 Replication of Known Hurricane Losses

The model shall be shown to reasonably replicate incurred losses on a sufficient body of past hurricane events, including the most current data available to the modeler. This standard applies separately to personal residential and mobile homes to the extent data are available. Personal residential experience may be used to replicate building-only and contents-only losses. The modeler shall demonstrate that the replications were produced on an objective body of loss data by county or an appropriate level of geographic detail.

Reference: Module 3, Section IV, #9

Reference: Module 3, Section V, #2

Reference: Standard 5.6.3

5.4.14 Comparison of Estimated Hurricane Loss Costs

The model shall provide the annual average zero deductible statewide loss costs produced using the list of hurricanes in standard 5.2.3 historical hurricanes in Florida based on the 1998 Florida Hurricane Catastrophe Fund's (FHCF) aggregate personal residential exposure data, as of November 1, 1999. These will be compared to the statewide loss costs produced by the model on an average industry basis. The difference, due to uncertainty, between historical and modeled annual average statewide loss costs shall be demonstrated to be statistically reasonable.

Reference: Module 3, Section I, #7

Reference: Module 3, Section I, #10

Reference: Module 3, Section V, #2

Reference: Module 3, Section V, #4

Reference: Standard 5.6.3

5.4.15 Output Ranges

Any model previously found acceptable by the Commission shall provide an explanation suitable to the Commission concerning the updated output ranges. Differences between the prior year submission and the current submission shall be explained in the submission including, but not limited to:

1. Differences from prior submission of greater than ten percent in maximum or minimum loss costs for any county shall be specifically listed and explained.
2. Differences from prior submission in the relativities between loss costs for building and the corresponding loss costs for contents shall be explained.
3. Differences from prior submission in the relativities among corresponding deductibles shall be explained.

Reference: Module 3, Section V, #4-5

5.4.16 County Level Aggregation

At the county level of aggregation, the contribution to the error in loss costs estimates induced by the sampling process shall be demonstrated to be negligible.

Reference: Module 1, Section II, C.2

Reference: Standard 5.6.3

5.4.17 Total Estimated Losses

The modeler shall demonstrate through the information submitted in Form B and Form D (Module 3, Section VII) that the model produces reasonable relationships among the total estimated losses produced by the model for building, appurtenant structures, contents, and additional living expense.

Reference: Module 3, Section VII

5.5 Computer Standards

5.5.1 Primary Document Binder

A primary document binder, in either electronic or physical form, shall be created, and shall contain fully documented sections for each subsequent Computer Standard. Development of each section shall be indicative of accepted software engineering practices. All computer software (i.e., user interface, scientific, engineering, actuarial) relevant to the modeler's submission must be consistently documented.

Reference: Module 1, Section I

Reference: Module 1, Section II

5.5.2 Requirements

The modeler shall document all requirements specifications of the software, such as interface, human factors, functionality, documentation, data, human and material resources, security, and quality assurance.

Reference: Module 1, Section I

Reference: Module 1, Section II

Reference: Module 3, Section VI, #2

5.5.3 Software Architecture and Component Design

The modeler shall document detailed control and data flow diagrams, interface specifications, and a schema for all data files along with field type definitions. Each network diagram shall contain components (including referenced sub-component diagrams), arcs, and labels. A *model component custodian* (that individual who can explain the functional behavior of the component and respond to questions concerning changes in code, documentation, or data for that component) shall be identified and documented. For each component in the system decomposition, the modeler shall list the installation date under configuration control, the current version number, and the date of the most recent change(s).

Reference: Module 1, Section I

Reference: Module 1, Section II

5.5.4 Implementation

The software shall be traceable from the flow diagrams and their components down to the code level. All documentation, including document binder identification, shall be indicated in the relevant component. The highest design level components shall incrementally be translated into a larger number of components until the code level is reached.

Reference: Module 1, Section I

Reference: Module 1, Section II

5.5.5 Software Verification

The modeler shall employ and document procedures employed, such as code inspections, reviews, calculation crosschecks, and walkthroughs, sufficient to demonstrate code correctness. The code shall contain sufficient logical assertions, exception-handling mechanisms, and flag-triggered output statements to test the correct values for key variables that might be subject to modification.

Reference: Module 1, Section I

Reference: Module 1, Section II

5.5.6 Testing

Tests shall be documented for each software component, independent of all other components, to ensure that each component provides the correct response to inputs. All components when interfaced shall function correctly.

Reference: Module 1, Section I

Reference: Module 1, Section II

Reference: Standards 5.6.4 and 5.6.5

5.5.7 Software Maintenance and Revision

The modeler shall specify all policies and procedures used to maintain code, data, and documentation. The modeler shall use tracking software to track all errors, as well as modifications to code, data, and documentation.

Reference: Module 1, Section I

Reference: Module 1, Section II

5.5.8 User Documentation

The modeler shall have complete user documentation including all recent updates.

Reference: Module 1, Section I

Reference: Module 1, Section II

5.6 STATISTICAL STANDARDS

5.6.1 Use of Historical Data

The use of historical data in developing the model shall be demonstrated to be reasonable using rigorous methods published in the scientific literature.

Reference: Module 1, Section II, B.12

Reference: Module 3, Section I, #7

5.6.2 Comparison of Historical and Modeled Results

The modeler shall demonstrate the agreement between historical and modeled results for hurricane frequencies, tracks, intensities, and physical damage using accepted scientific and statistical methods.

Reference: Module 1, Section II, A.1

Reference: Module 1, Section II, B.7

Reference: Module 1, Section II, C.1
Reference: Module 1, Section II, C.3
Reference: Module 1, Section II C.5-6
Reference: Module 3, Section III, #4-5
Reference: Module 3, Section IV, #3-6

5.6.3 Uncertainty Characterization

The modeler shall provide an assessment of uncertainty using confidence intervals or other accepted scientific characterizations of uncertainty.

Reference: Module 1, Section II, B.9

5.6.4 Sensitivity Analysis for Model Output

The modeler shall demonstrate that the model has been assessed with respect to sensitivity of temporal and spatial outputs to the simultaneous variation of input parameters using accepted scientific and statistical methods. Statistical techniques used to perform sensitivity analysis shall be explicitly stated and the results of the analysis shall be presented in graphical format.

Reference: Module 1, Section I, A.5
Reference: Module 1, Section II, B.13-15

5.6.5 Uncertainty Analysis for Model Output

The modeler shall demonstrate that the temporal and spatial outputs of the model have been subjected to an uncertainty analysis using accepted scientific and statistical methods. The analysis shall identify and quantify the extent that input variables impact the uncertainty in model output as the input variables are simultaneously varied. Statistical techniques used to perform uncertainty analysis shall be explicitly stated and results of the analysis shall be presented in graphical format.

Reference: Module 1, Section I, A.5
Reference: Module 1, Section II, B.9
Reference: Module 1, Section II, B.13-15

**COMPARISON OF
2001 STANDARDS TO 2000 STANDARDS**

**Florida Commission on Hurricane Loss Projection Methodology
2001 Standards Compared to 2000 Standards**

Standard	Title	Change	New	Comments
General				
5.1.1	Scope of the Computer Model and Its Implementation	None		
5.1.2	Qualifications of Modeler Personnel and Independent Experts	NS		
5.1.3	Modelers Policy of Model Revision	NS		
5.1.4	Independence of Model Components	None		
5.1.5	Risk Location	S		
5.1.6	Identification of Units of Measure of the Model	None		
5.1.7	Visual Presentation of Data	None		
Meteorological				
5.2.1	Units of Measure for Model Output	None		
5.2.2	Damage Function Wind Inputs	None		
5.2.3	Official Hurricane Set or Suitable Approved Alternatives	S		
5.2.4	Hurricane Characteristics	None		
5.2.5	Landfall Intensity	None		
5.2.6	Hurricane Probabilities	S		
5.2.7	Hurricane Probability Distributions	None		
5.2.8	Land Friction	None		
5.2.9	Hurricane Overland Weakening Rate	None		
Vulnerability				
5.3.1	Derivation of Vulnerability Functions	None		
5.3.2	Required Vulnerability Functions	None		
5.3.3	Wind Speeds Causing Damage	None		
5.3.4	Construction Characteristics	None		
5.3.5	Modification Factors	None		
5.3.6	Additional Living Expenses	None		
5.3.7	Mitigation Measures	None		
Actuarial				
5.4.1	Underwriting Assumptions	None		
5.4.2	Actuarial Modifications	None		
5.4.3	Loss Costs Projections	None		
5.4.4	Insurer Inputs	None		
5.4.5	Demand Surge	NS		
5.4.6	Loss Costs—Meaning of “Damage”	None		
5.4.7	Logical Relation to Risk	NS		
5.4.8	Deductibles and Policy Limits	NS		
5.4.9	Contents	None		
5.4.10	Additional Living Expenses (ALE)	None		
5.4.11	Building Codes	None		
5.4.12	Hazard Mitigation	None		
5.4.13	Replication of Known Hurricane Losses	None		
5.4.14	Comparison of Estimated Hurricane Loss Costs	S		
5.4.15	Output Ranges	S		
5.4.16	County Level Aggregation	None		
5.4.17	Total Estimated Losses		S	
Computer				
5.5.1	Primary Document Binder	NS		
5.5.2	Requirements	None		
5.5.3	Software Architecture and Component Design	S		
5.5.4	Implementation	None		
5.5.5	Software Verification	NS		
5.5.6	Testing	None		
5.5.7	Software Maintenance and Revision	S		
5.5.8	User Documentation	None		

Standard	Title	Change	New	Comments
<i>Statistical</i>				
5.6.1	Use of Historical Data		S	
5.6.2	Comparison of Historical and Modeled Results	NS		
5.6.3	Uncertainty Characterization	NS		
5.6.4	Sensitivity Analysis for Model Output	S		
5.6.5	Uncertainty Analysis for Model Output	S		

S = Significant

NS = Not Significant

None = No change from prior year's standard

Note: *The Commission has determined that “significant changes” are those that result in or have potential for changes to loss costs. The Commission may determine, in its judgement, whether a change is significant.*

WORKING DEFINITIONS

Working Definitions

Computer Terms:

Class:

An interface module that declares attributes and methods for accessing the attributes. A Class is a node within a hierarchy (i.e., usually for inheritance or aggregation).

Code:

Abbreviation for “Program Code.” Synonym: implementation.

Flow Diagram:

A diagram that contains components, which connect to each other to form a network of directed arcs. Arcs are directed in that they specify a directional flow of either data or control between components.

Implementation:

The conversion from algorithm to software using a specific language that has support for its execution in the form of a translation program, usually termed an interpreter or compiler.

Logical Assertions:

Logic-based expressions that evaluate to true or false. Assertions are used in Model and Software Verification to ensure that variables are within bounds and contain expected values.

Software Verification:

The process of ensuring that the implemented software, using a particular programming language, agrees with all requirements and design specifications. In short, is the software doing what it is supposed to do? Is the software correct?

Object:

An instance of a Class.

Object-Oriented:

A paradigm for software design, emphasizing encapsulation of both data and program within Classes and Objects.

User:

Someone who executes the code and/or obtains the output.

User Documentation:

All available documentation for users, whether external or in-house.

Visualization:

A two-dimensional or three-dimensional graphic that is composed of elements.

Insurance Terms:

Actual Cash Value (ACV):

Cost of replacing damaged or destroyed property with comparable new property minus depreciation.

Actuary:

A highly specialized mathematician professionally trained in the risk aspects of insurance, whose functions include the calculations involved in determining proper insurance rates, evaluating reserves, and various aspects of insurance research.

All Risk:

Coverage in a property policy that provides protection for all perils except for those specifically excluded.

Amount of Insurance Curve:

A rating chart in which the rate per amount of insurance is lower for higher amounts of insurance. For example, the rate applicable to a \$50,000 home may be \$5.00 per thousand (resulting in a \$250 premium) while the rate for a \$100,000 home may be \$4.00 per thousand (resulting in a premium of \$400).

Appurtenant Structures:

Coverage for detached buildings and other structures located on the same property as the principal insured building, e.g., detached garage, fences, swimming pools, patios, etc.

BCEGS:

Insurance Services Office's Building Code Effectiveness Grading Schedule.

Bias:

A statistical sampling or testing error caused by systematically favoring some outcomes over others.

Catastrophe:

A natural or man-made event which causes more than \$25 million in insured losses. This definition is the one used by Property Claims Services.

Catastrophe Loading:

A provision in the rates to pay for expected losses from catastrophes. This loading is included in the rate generally as a factor representing catastrophe losses.

Coinsurance:

A percentage co-payment structured so that the policyholder pays a specified percentage of each loss. The maximum paid by the policyholder on a total loss is the coinsurance percentage times the amount of insurance. Although coinsurance has been rare in homeowners in the past, it is becoming more common in catastrophic exposures such as earthquake and hurricane.

Coinsurance Requirement or Coinsurance Penalty Policy:

A policy provision in a property insurance contract which requires the insured to carry insurance equal to a certain specified percentage of the value of the property in order for the insured to receive full replacement value on a loss. The typical coinsurance requirement requires that the value of the property at the time of a loss be 80% of the replacement value of the property. If the value is less than 80%, the policyholder collects less than the replacement value of the loss but never less than ACV of the loss.

Depreciation:

The decrease in the value of property over a period of time.

Earned Premium:

The portion of premium paid by an insured which has been allocated to the insurance company's loss experience, expenses, and profit year to date.

Exclusion:

Provision of an insurance policy that indicates which types of property or perils are not covered.

Expense Ratio:

The ratio of expenses to premium. Expenses are typically categorized as follows: (a) commission; (b) general expense; (c) loss adjustment expenses; (d) taxes, licenses, and fees; (e) investment expenses.

Exposure:

The unit of measure of the amount of risk assumed. Rates and loss costs are expressed as dollars per exposure. Sometimes the number of houses is used in homeowner's insurance as a loose equivalent.

Florida Insurance Code:

Chapters 624 through 632, 634, 635, 636, 641, 648, and 651 of the Florida Statutes. Note that as the State Fire Marshal, the Treasurer and Insurance Commissioner also has responsibility for Chapter 633, but that chapter is not part of the Insurance Code.

Ground Up Loss:

Incurred loss to a structure or location prior to the application of a deductible, policy limit, coinsurance penalty, depreciation, exclusion or other policy provision.

Guaranteed Replacement Cost:

A policy provision in which the insurer agrees to pay losses on a replacement cost basis even if in excess of the policy limit.

Homeowner's Policy:

A package policy for the homeowner that typically combines protection on the structure and contents, additional living expense protection, and personal liability insurance. Homeowner's policies were first developed in the 1950's. Prior to that time, homeowners wishing coverage for fire, theft, and liability had to purchase three separate

policies. Homeowner's policies do not cover earthquake or flood. These are sold separately.

Insurance to Value:

The relationship of the amount of insurance to replacement cost is called Insurance to Value. 100% insurance to value means that the amount of insurance equals the replacement cost.

Involuntary or Residual Markets:

State sponsored markets; markets of last resort. For property insurance in Florida these are: Florida Residential and Property Casualty Joint Underwriting Association and the Florida Windstorm Underwriting Association.

Loss:

A reduction in the value of a property caused by an insured event.

Loss Adjustment Expenses (LAE):

The expenses incurred by an insurer to adjust a claim by a policyholder. These expenses are divided into allocated loss adjustment expenses (ALAE) and unallocated loss adjustment expenses (ULAE). Allocated loss adjustment expenses are specific amounts attributable to individual claims such as attorney's fees and court costs. Unallocated loss adjustment expenses are all other types of LAE.

Named Peril:

Coverage in a property policy that provides protection against a loss only from the perils specifically listed in the policy. Examples of named perils include fire, windstorm, theft, smoke, riot, vandalism, water (other than rising water), explosion, aircraft, and hail.

Pass Through:

Generally, an amount which is a cost to an insurer but which is permitted by statute to be ultimately absorbed by the consumer. During the 1995 session, the Legislature added a subsection (5) to Section 627.062, Florida Statutes, which permits insurers to "recoup the actual amount of reimbursement premium charged by the Florida Hurricane Catastrophe Fund (FHCF) by including the FHCF rates in their rating manuals".

Peril:

The loss producing agent. The contingency which is the cause or agent of loss. Insurance policies are often referred to by the peril insured against, as in a fire policy, a collision policy, or a liability policy.

Policy Term:

Time interval during which a policy is in force.

Premises:

The building, other structures, and land where the insurance protection is applicable. It is usually described and defined in the property and casualty policy. Note, however, that the land is not insured, only the structures and contents located on the land.

Premium:

The consideration paid or to be paid to an insurer for the issuance and delivery of any binder or policy of insurance; see Section 626.014(2), Florida Statutes. Premium is the amount charged to the policyholder and includes all taxes and commissions.

Property Insurance:

Insurance on real or personal property of every kind, whether the property is located on land, on water, or in the air, against loss or damage from any and all perils (hazards or causes); (see Section 624.604, Florida Statutes).

Rate:

The amount by which the exposure is multiplied to determine the premium. See Section 627.041(1), Florida Statutes. Rate times exposure equals premium.

Rating Territory (Territory):

In various property and casualty lines, a geographical grouping within which insureds are likely to share an exposure to similar risks. Grouping of insureds by territory helps establish equitable rates for the territory and simplifies premium determination.

Reinsurance:

An arrangement by which one insurer (the ceding insurer) transfers all or a portion of its risk under a policy or group of policies to another insurer (the reinsurer). Thus reinsurance is insurance purchased by an insurance company from another insurer, to reduce risk for the ceding insurer.

Replacement Cost:

The cost to replace damaged property with a new item of like kind and quality.

Standard Risk:

A property which, according to a company's underwriting standards, is entitled to insurance at standard rates without restrictions.

Trending Procedure:

A process by which an actuary evaluates how changes over time affect such items as claims costs, claim frequencies, expenses, and premiums.

Underwriting:

The process of identifying and classifying the potential degree of risk represented by a proposed exposure unit. Potential insureds that satisfy an insurer's underwriting standards are offered insurance or are offered a renewal while others are declined or non-renewed.

Written Premium:

Premiums billed, collected, or otherwise recorded on the books of the insurer during a calendar year or other period of time.

Voluntary Market:

The market in which a person seeking insurance obtains it with no help from the state, through an insurer of his or her own selection.

Meteorological Terms:**By-Passing Storm:**

A hurricane in which the eye does not cross the coast, but does contain hurricane force winds over land.

Decay Rate/Filling Rate:

The rate at which a tropical cyclone decays as measured by its rise in central pressure. Tropical cyclones weaken or decay as central pressure rises. Once tropical cyclones move over land, their rate of decay is affected not only because of the removal of their warm water energy source, but also because of natural or man-made terrain roughness.

Fastest Mile:

Speed at which it takes one mile of wind to pass a location.

Forward Speed:

The forward speed at which a tropical cyclone is moving along the earth's surface. This is not the speed at which winds are circulating around the tropical cyclone. A forward speed of 3 mph is slow; a forward speed of 10-15 mph is average; a forward speed of 20-30 mph is fast but not impossible.

Hurricane:

A tropical cyclone in which the maximum one-minute average wind speed at 10 meters height is 74 miles per hour or greater.

Hurricane Eye:

The relatively calm area in the center of the storm. In this area, winds are light and the sky often is only partly covered by clouds.

Hurricane Season:

That part of the year having a relatively high incidence of hurricanes. In the Atlantic Ocean, Caribbean Sea, and the Gulf of Mexico, the period runs from June 1 through November 30.

Hurricane Strike Probabilities:

The probability in percent that a hurricane eye will pass within 50 miles to the right or 75 miles to the left of the listed location within the indicated time period when looking at the coast in the direction of the hurricane's movement.

Hurricane Warning:

A warning issued by the Tropical Prediction Center/National Hurricane Center that the maximum one-minute average wind speed at 10 meters height is 74 miles per hour or higher associated with a hurricane are expected in a specified coastal area within 24 hours or less. A hurricane warning can remain in effect when dangerously high water or a combination of dangerously high water and exceptionally high waves continue even though winds may be less than hurricane force.

Hurricane Watch:

An announcement issued by the Tropical Prediction Center/National Hurricane Center for specific areas that a hurricane or an incipient hurricane condition poses a possible threat to the coastal areas generally within 36 hours.

Miles Per Hour (mph):

Miles per hour. Standard unit of wind speed measurement.

Millibar (mb):

Metric unit of air pressure. See Minimum Central Pressure.

Minimum Central Pressure:

Minimum Central Pressure is defined as the minimum pressure at the center of a tropical cyclone. The atmosphere exerts a pressure force. Pressure is measured in inches of mercury and in millibars. Average sea level pressure is 29.92 inches of mercury or 1013.25 millibars. Tropical Cyclones have low pressure at the center of the cyclone. The lower the pressure, the stronger the tropical storm, both in terms of wind speed and storm surge height. The lowest pressure ever measured in a hurricane in the Atlantic basin was 888 mb/26.22 inches in Hurricane Gilbert.

Peak Gust:

Highest wind recorded. Generally in a 2- to 3-second interval.

Radius of Maximum Winds:

The radius from tropical cyclone center to the point of maximum winds surrounding a tropical cyclone. For a typical hurricane, the distance is about 15-20 miles.

Saffir-Simpson Scale:

A scale ranging from one to five based on the hurricane's present intensity. This scale can be used to give an estimate of the potential property damage and flooding expected along the coast from a hurricane. In practice, wind speed is the parameter that determines category since storm surge is strongly dependent on the slope of the continental shelf.

Storm Surge:

An abnormal rise in sea level accompanying a hurricane, and whose height is the difference between the observed level of the sea surface and the level that would have occurred in the absence of the hurricane. Storm surge is usually estimated by subtracting the normal or astronomical tide from the observed storm tide.

Storm Tide:

The actual sea level resulting from the astronomical tide combined with the storm surge.

Storm Track:

The path along which a tropical cyclone has already moved.

Tropical Cyclone:

A generic term for a non-frontal synoptic-scale cyclone originating over tropical or subtropical waters with organized convection and definite cyclonic surface wind circulation.

Tropical Depression:

A tropical cyclone in which the maximum one-minute average wind speed at 10 meters height is 38 miles per hour or less.

Tropical Disturbance:

A discrete system of organized convection originating in the tropics having a non-frontal migratory character and maintaining its identity for 24 hours or more. It is a basic generic designation that, in successive stages of intensification, may be subsequently classified as a tropical wave, tropical depression, tropical storm or hurricane.

Tropical Storm:

A tropical cyclone in which the maximum one-minute average wind speed at 10 meters height ranges from 39 to 73 miles per hour inclusive.

Tropical Wave:

A surface cyclonic curvature maximum or trough in the tropics.

Wind Field:

The area of winds associated with a tropical cyclone. Winds are typically asymmetric in a moving tropical cyclone with winds in the right front quadrant, relative to motion, being strongest.

Modeling Terms:**Aggregated Data:**

Summarized data sets or data summarized by using different variables. For example, data summarizing the exposure amounts by line of business by zip code is one set of aggregated data.

Annual Aggregate Loss Distributions:

For the Commission's purposes, the aggregate losses which are expected to occur for all hurricane events in any one year. Another way to state it is the aggregate probable maximum loss. See below for Probable Maximum Loss (PML).

Characteristics:

The variables which define an event. For the Commission's purposes, since the event is a hurricane, these might include such things as central pressure, forward speed, or wind speeds.

Damage Ratio:

Percentage of a property damaged by an event relative to the total cost to rebuild or replace the property of like kind and quality.

Damageability:

The degree of susceptibility a structure has to damage caused by a hurricane. For example, a mobile home is more susceptible to damage from hurricanes than is a home built of poured concrete.

Event Tree Methodology:

A modeling approach which uses historical information to determine patterns of the key characteristics for defining hurricane events including landfall locations, central pressure, forward speed, and angle. This method segments these probability distributions and then combines the different segments to create a stochastic storm set.

Event:

For purposes of modeling hurricane losses, a hurricane is considered an event.

Geocoding:

Assignment of a location to geographic coordinates.

Independent:

An independent characteristic or event is one which is unaffected by the existence of another characteristic or by whether or not another event occurs.

Location Specific Data:

Data represented for each individual risk or unit covered by a policy in an insurer's portfolio of policies.

Mapping of Zip Codes:

Either a point estimate or a physical geographic area.

Model Validation:

A comparison between model behavior and empirical (i.e., physical) behavior.

Model Verification:

A comparison between model behavior and program behavior.

Probable Maximum Loss (PML):

The largest single event that is likely to befall an insurer. This is important to assess the adequacy of surplus to support the policies issued by the insurer and is also used to evaluate reinsurance needs.

Property Data Base:

A listing of assumed or actual structures in an area that includes at a minimum the number, location, type, and value of property. It may be the modeler's estimate or an insurance company's actual book of business.

Return Time:

Average span in years between expected, similar events.

Roughness:

The characteristics of a surface related to its ability to disrupt airflow. The rougher the surface, the quicker a storm decays, the greater the turbulence, and the higher the difference between peak winds and sustained winds.

Man-Made Roughness:

Man-made obstacles; e.g., structures, which affect the wind speeds and surge or wave action of hurricanes.

Natural Roughness:

Natural obstacles in a particular area; e.g., valleys, mountains, trees, coastline, which affect wind speed and storm surge or wave action of hurricanes.

Sensitivity:

The effect which a change in the value of a variable will have on the output of the model.

Sensitivity Analysis:

Determination of the magnitude of the change in response of a model to changes in model inputs and specifications.

Significant Change:

Those changes to the standards or any changes to the model that result in changes to loss costs or have potential for changes to the loss costs. The Commission may determine in its judgement whether a change is significant.

Smooth Terrain:

Open grassy location with no obstructions above the surface for 100 meters.

Uncertainty Analysis:

Determination of the variation or imprecision in model output resulting from the collective variation in the model inputs.

Vulnerability Assessment:

A determination as to how likely a particular insured structure is to be damaged by a hurricane and an estimate of the loss potential.

Vulnerability Functions:

The curve that represents the damage ratios expected at various wind speeds for a given structural type.

Zip Code Centroid: Two types of centroids:

Geographic Centroid:

The geographic center of a zip code.

Population Weighted Centroid:

The center determined by weighing the distribution of population over the zip code.

Statistical Terms:

Definitions of statistical terms are available in: A Dictionary of Statistical Terms, Fifth Edition, F.H.C. Marriott, John Wiley & Sons, 1990.

Organizations:

ISO:

Insurance Services Office is an organization that provides actuarial, structural engineering, fire protection, and loss cost information to the insurance community on a specific location and peril basis.

NOAA:

National Oceanographic and Atmospheric Administration. Created in 1970 by the U.S. Government as part of the Department of Commerce.

NWS:

National Weather Service organizationally a component of NOAA. The NWS has more than 400 field offices and observation networks in 50 states and overseas. Its primary responsibility is to provide scientific and technological assistance in the general field of the atmospheric sciences to save lives, reduce injuries, and minimize property loss from extreme weather events throughout the country. NWS has the following components:

National Center for Environmental Prediction (NCEP) in Washington, DC is the nerve center for all national centers and provides synoptic-scale numerical forecast guidance material and long-range forecasts;

Storm Prediction Center (SPC) in Norman, Oklahoma maintains a constant watch for severe weather potential around the country and issues thunderstorm and tornado watches;

Tropical Prediction Center/National Hurricane Center (TPC/NHC) in Miami, Florida is responsible for issuing many tropical weather forecasts including hurricane advisories for the Atlantic, the Caribbean, the Gulf of Mexico, and the Eastern Pacific to 140W longitude. The Honolulu Forecast Office covers hurricanes in the Central Pacific between 140W and 180W longitude;

Marine Prediction Center (MPC) in Camp Springs, Maryland is responsible for issuing marine warnings, forecasts, and guidance for maritime users;

Aviation Weather Center (AWC) in Kansas City, Missouri is responsible for issuing warnings, forecasts, and analyses of hazardous weather for aviation interests;

Climate Prediction Center (CPC) in Camp Springs, Maryland provides weather forecasts on weekly, monthly, and seasonal time-scales.

PCS:

Property Claims Services is an industry claims reporting service located in New Jersey. Property and casualty insurance companies report to PCS after major losses occur. If the number of claims exceeds 5,000 or the total loss exceeds \$25 million, the event is assigned a catastrophe number. The organization is funded by company subscription to its service.

BASE STORM SET

NORMATIVE REFERENCES

Normative References and Data Sets

For the purposes of the standards for model specification adopted in this document, the following references or published data sets are deemed normative. Subsequent revisions to these documents shall be construed to supersede the versions listed below. The actual use of information from these documents or data sets in the context of the computer models is addressed in the standards.

1. **Meteorological Criteria for Standard Project Hurricane and Probable Maximum Hurricane Wind Fields, Gulf and East Coasts of the United States, NOAA Technical Report NWS 23**, Washington, D.C., September, 1979
2. **Hurricane Climatology for the Atlantic and Gulf Coasts of the United States, NOAA Technical Report NWS 38**, Washington, D.C., April, 1987
3. **North Atlantic Storm Data Base, HURDAT**
4. Kaplan/DeMaria, “*A Simple Empirical Model for Predicting the Decay of Tropical Cyclone Winds After Landfall*,” **Journal of Applied Meteorology**, Volume 34, #11, November, 1995
5. Tropical Prediction Center/National Hurricane Center (TPC/NHC), **Tropical Cyclones of the North Atlantic Ocean, 1871-1998**, with updates

GUIDEBOOK

GUIDEBOOK

The guidebook is intended to assist the modeler in preparing for the on-site review by the Professional Team whose mandate is to assess the modeler's compliance with the Commission's standards. Although the ultimate authority for acceptance rests with the Commission, it is deemed helpful to provide some specifics to the modeler as to the extent and depth of the Professional Team review. Such guidance should allow the modeler to prepare for the review. The Professional Team may deem it appropriate, in the course of the on-site review, to investigate certain aspects of the model not explicitly delineated in this guidebook. The goal of the Professional Team's efforts is to provide the Commission a clear and thorough report of the model, subject to non-disclosure conditions.

5.1 General Standards

5.1.1 Scope of the Computer Model and Its Implementation

Purpose: This standard gives a high level view of the scope of the model to be reviewed – namely, projected loss costs for personal lines residential property from hurricane events. Additional living expense (ALE) will be reviewed in detail since infrastructure degradation due to flood and storm surge can have an impact on ALE. Discussion of ALE will be primarily deferred to 5.3.6, 5.4.4, and 5.4.10. The reference to a computer model explicitly is intended to include the implementation of the model. Direct loss to property from flood and storm surge will be excluded. Indirect losses (ALE) to property resulting from damage to the infrastructure (power generation, public highways, etc.) will be included.

Audit: This standard concerns the scope of the computer model and its implementation which is expected to project loss costs for personal residential property due to hurricane events. ALE is mentioned explicitly since flood and storm surge can in fact impact it. The main intent of the audit is to determine the capabilities of the model and to assess its implementation for purposes of Florida estimated loss costs.

5.1.2 Qualifications of Modeler Personnel and Independent Experts

Purpose: This standard was originally adopted as a Finding of the Commission on November 30, 1995, and was subsequently modified and adopted on May 20, 1996, to add language to address the professional conduct of modeler personnel or independent experts involved in the model construction. To meet the standard, the modeler will provide during the audit written evidence of the professional credentials and capabilities, typically in the form of professional vitae of their personnel responsible for the current model and its development. Professional disciplines implicitly

represented in Commission standards (structural/wind engineering, statistics, actuarial science, meteorology, computer science/engineering) will be represented among modeler staff and consultants.

Audit: We would like to review the professional vitae of modeler personnel and independent experts responsible for the current model and information on their predecessors, if different than current personnel. For the actuarial personnel, professional status in the appropriate actuarial organization or organizations is usually apparent on the vitae. For other disciplines, the vitae ought to be sufficient to make a determination for this standard, with further commentary possible during the on-site interactions. Background information on individuals providing testimonial letters in the submission must be provided.

The Commission expects new modelers to be well-prepared for an on-site review of the Professional Team. In particular, it is suggested that a modeler conduct a detailed self-audit to assure that it is ready for the formal audit. This is especially important for discipline areas not covered by full-time employees or consultants.

5.1.3 Modeler's Policy of Model Revision

Purpose: The Commission will determine to be acceptable only those models for which the owners have a clearly written policy for model revision with respect to methodologies and data. To meet the standard, the modeler will demonstrate control of the evolution of their model to the extent that reviews, updates, modifications, releases, and other revisions follow generally accepted practices and are appropriately identified to the user, especially with respect to computer engineering.

Audit: Here we would like to see the process for model revisions (both methodology and data, especially updates from year-to-year with new storms). What safeguards or controls are in place? How does the annual update take place? How is it identified? Citing specific examples gives further strength to our assessment (for 1996 storms, we did the following ... and now the updated storm set is in place....). Our computer expert could then review the current set up.

5.1.4 Independence of Model Components

Purpose: This standard requires that each of the three primary components are individually sound, and moreover operate independently of each other. For example, the model will not allow adjustments to the vulnerability components to compensate for apparent meteorological deficiencies (e.g., inflating damage to counteract

for a deflated wind field). In addition to each component of the model meeting its respective standards, the interrelationship of the model components as a whole must be reasonable.

Audit: This standard will be considered last, or at least following the review of meteorology, vulnerability, and actuarial sections. The modeler needs to convince the Professional Team that their choices of model components adequately portray hurricane phenomena and effects (damage and loss costs). This can be accomplished indirectly via agreement with historical loss costs and attendant tests but also requires an assessment of the theoretical soundness of each component. A model would not be found to meet this standard, if an artificial calibration adjustment had been made to improve the match of historical and model results for a specific storm.

5.1.5 Risk Location

Purpose: The zip code information must be updated at least every two years. The modeler needs to be able to do geographic displays for selected zip codes.

Audit: Aside from disclosure of updates, the Professional Team is likely to ask to view the location of centroids for specific zip codes. Interest in specific zip codes arises in the context of logical relationship to risk or in basic assessments of loss costs.

5.1.6 Identification of Units of Measure of Model

Purpose: In reviewing the model, it is essential that the specific units of measure be provided. This standard was formerly in the meteorology section of standards, but since it is appropriate for vulnerability and actuarial standards, it was moved to general standards.

5.1.7 Visual Presentation of Data

Purpose: Visualization plays a key role in promoting a human understanding of input and output data for the hurricane model. Good visualization techniques are needed so that graphs, charts, and maps are clearly presented and understood. A visualization is defined as a 2D, 3D graphic that is composed of elements. Example visualizations include pie and bar charts, graphs, scatter plots, and geographic maps. Computer animations, where appropriate and relevant, are encouraged. A note on color spaces: red and blue should be the only colors. In RGB color space, this implies that colors extend from (0,0,1) as blue to (1,0,0) as red. For example, (0,0,1) -> (0.1,0.1,1) -> (0.2,0.2,1) -> ... -> (1,1,1) -> (1,0.9,0.9) -> (1,0.8,0.8) -> ... -> (1,0,0) defines a set of color values using a blue to red transition.

Audit: The modeler will have key maps, charts, and graphs pre-prepared and will have the ability to quickly prepare such maps during an on-site review.

5.2 Meteorological Standards

5.2.1 Units of Measure for Model Output

Purpose: The Commission requires uniformity of measurements with regard to model outputs in the units given in the standard.

5.2.2 Damage Function Wind Inputs

Purpose: To insure that the output from the wind component is appropriate as input for the damage function (allowing for the possibility of an appropriate conversion).

5.2.3 Official Hurricane Set or Suitable Approved Alternatives

Purpose: The “official” storm set is a baseline. This set covers the period 1900-2000. A primary use of this baseline storm set is in checking model versus historical storms impacting Florida. The standard does not preclude the use of other hurricane or tropical storm events, if they provide relevant information in hurricane modeling.

Not updating the storm set, as specified in the Standard, is not an acceptable alternative.

5.2.4 Hurricane Characteristics

Purpose: This standard requires that the modeler use only scientifically sound information for determining hurricane characteristics. By using graphical depictions and density functions, the modeler should describe the data set and the correlated storm characteristics.

Audit: Prepare graphical depictions (e.g., histograms overlaid with fitted density functions) of storm characteristics as used in the model. Be prepared to describe the data set basis for the fitted distributions. Describe your assessments of correlated characteristics (e.g., central pressure and radius of maximum winds). Describe the fitting methods used and any smoothing techniques employed. Defend your choice of parametric distributions used. Be prepared to present information on the spatial distribution of hurricane force winds (e.g., the radius of hurricane force winds) associated with both modeled and historical events. Throughout the review of this standard, an assessment of

the goodness of fit of parametric distributions to historical needs to be provided, consistent with standard 5.6.2.

With respect to storm tracks, the stochastic storm set or its equivalent ought to depict realistic storm tracks. This can be demonstrated through Figure 4 in Module 3, Section 1, for example. Consistency between historical and modeled tracks means: (1) distributions of storm tracks should accurately depict actual storm tracks in Florida; and (2) comparisons are to be based on methods documented in accepted scientific literature or proposed by the modeler and accepted by the Commission.

5.2.5 Landfall Intensity

Purpose: To provide a consistent measure of hurricane wind speed and a consistent measure of hurricane intensity. The HURDAT database and the “official” storm set provided by the Commission will form the normative reference to this standard.

Audit: Be prepared to describe and to support category 3-5 storms with respect to intensity and wind speed. In particular, defend the goodness of fit of historical versus modeled frequencies (by intensity), providing confidence intervals where appropriate.

5.2.6 Hurricane Probabilities

Purpose: This standard requires that the probability of occurrence of hurricanes match the historical record with respect to intensities and geographical locations. Results provided in Module 3, Section I provide definitions of the four geographic areas of particular interest.

Audit: Be prepared to describe and to support your method of selecting stochastic storm tracks and angle of landfall. Be prepared to describe and support the method of selecting storm track strike intervals. If strike locations are on a discrete set, show the landfall points for major metropolitan areas in Florida. Assess the goodness of fit of modeled to historical frequencies for the four sections of the state and overall. Explain any significant discrepancies. In particular, defend the goodness of fit of historical versus modeled frequencies (by intensity), providing confidence intervals where appropriate.

5.2.7 Hurricane Probability Distributions

Purpose: This standard requires that the modeled probabilities of hurricane characteristics be documented in accepted scientific literature which is available for the Commission’s review.

Audit: Be prepared to disclose the goodness of fit of parametric distributions to historical hurricane characteristics.

5.2.8 Land Friction

Purpose: To insure that the required weakening of hurricanes over land is consistent with the scientific literature depicting appropriate building/land coefficients and which will be made available to the Commission for review.

Audit: Be prepared to describe your handling of land friction. Maps by zip codes are required.

5.2.9 Hurricane Overland Weakening Rate

Purpose: To provide the current most widely accepted model of overland weakening and to provide a range of compliance with that model prediction.

Audit: The graphical representation of the modeled degradation rates as well as the numbers plotted are considered to be part of the submission.

5.3 Vulnerability Standards

5.3.1 Derivation of Vulnerability Functions

Audit: To the extent that historical data is used to develop vulnerability functions, be prepared to demonstrate the goodness of fit of the data to fitted models as per standard 5.6.2.

5.3.2 Required Vulnerability Functions

5.3.3 Wind Speeds Causing Damage

5.3.4 Construction Characteristics

5.3.5 Modification Factors

5.3.6 Additional Living Expenses

5.3.7 Mitigation Measures

5.4 Actuarial Standards

5.4.1 Underwriting Assumptions

Purpose: To insure that loss cost projections, when based upon insurance company data, do not include inappropriate insurer or modeler

manipulations, but are indicative of the actual underlying data whenever such data are used.

Audit: Quality assurance procedures will include methods to assure accuracy of input insurance data prior to code execution.

5.4.2 Actuarial Modifications

5.4.3 Loss Cost Projections

Purpose: The Commission has determined that at present its scope is limited to loss costs. Loss costs represent the pure premium for anticipated losses. Other “expense and profit loads” such as those listed in the standard are included in rate filings and are calculated by actuaries rather than a computer model. The appropriateness of such “loads” should be resolved between the regulatory actuary and the insurance company actuary.

Loss severity is influenced by general economic inflation applicable to material and labor. Amounts of insurance may also be influenced (although perhaps differently) by economic inflation. Economic inflation is an element of past insurance experience which has been used to construct and validate hurricane loss projection models. Prospective changes in economic inflation applicable after construction of the model are found to be outside of the scope of the Commission’s work.

5.4.4 Insurer Inputs

Purpose: Hurricane loss projection models may rely upon certain insurer assumptions. In other cases modelers may make implicit actuarial assumptions relating to insurance to value, the prevalence of appurtenant structures, or demographic risk characteristics. Implicit assumptions may or may not be appropriate for use by a given insurer, depending upon the circumstances. All insurer inputs and the following assumptions must be disclosed.

Audit: Potential areas for assumptions may include, but are not limited to, the following:

1. Insurance to Value. Hurricane loss projection models may make assumptions as to the relationship of the amount of insurance to the replacement cost, repair cost, or actual cash value of property. This relationship, called insurance to value, can vary by insurer and can further vary over time.
2. Demographic Assumptions. Hurricane loss projection models may also include assumptions made by insurers using the model. These may include the percentage of houses in a zip code having a

particular roof type, cladding, or other structural characteristic. Other assumptions may be more subjective such as maintenance or state of repair.

3. Appurtenant Structures. The model should take into account the prevalence of appurtenant structures by geographic area. In many geographic areas there are relatively few appurtenant structures. Insurers, however, provide an amount of insurance for these structures anyway. Also, change in limits for appurtenant structures may not result in a commensurate change in expected losses because the existing limits may already exceed the value of these structures.
4. Contents. A change in contents limits may not result in a commensurate change in losses because the existing limits may already exceed the value of the contents.
5. Additional Living Expenses. A change in additional living expenses limits may not result in a commensurate change in losses because the existing limits may already exceed the largest likely loss.
6. Insurer Exposures By Zip Code. Some modelers rely on exposure data by zip code provided by insurers in preparation of a rate filing. In such cases, the modeler will validate all zip code information received from its insurance company clients to assure that valid zip codes are used.

In addition, the modeler will provide a blank copy of the user input form.

5.4.5 Demand Surge

Purpose: Demand surge is an increase in the cost of materials and labor due to increased demand following a hurricane. Demand surge was observed in Hurricane Andrew, but it has not been observed in smaller U.S. hurricanes. The circumstances necessary for a recurrence of demand surge do not appear to be well understood and quantified. Furthermore, governmental intervention is possible in future demand surge situations. Demand surge, if it exists for smaller storms, will be implicitly reflected in insurance industry experience. Models should not place over-emphasis on Hurricane Andrew experience because this may result in the prediction that demand surge will recur for all storms both large and small.

5.4.6 Loss Costs – Meaning of “Damage”

Purpose: The Commission recognizes that the question, “What is the damage to the house?” may be answered in a number of ways. In constructing their models, the modeling companies assess “damage” in more than one way, depending on the use to which the information is to be put in the model. A structural engineer might determine that a house is 55% damaged and consider it still structurally sound. A claims adjuster might look at the same house and determine that 55% damage translates into a total loss because the house will be uninhabitable for some time and, further, because of a local ordinance relating to damage exceeding 50%, will have to be completely rebuilt according to up-dated building requirements. Since the Commission is reviewing models for purposes of residential rate filings in Florida, loss costs must be a function of insurance damage rather than engineering damage.

5.4.7 Logical Relation to Risk

Purpose: Modeled loss costs should vary according to risk. If the risk of loss due to hurricanes is higher for one area or structure type, then the loss costs should also be higher. Likewise, if there is no difference in risk there should be no difference in loss costs. Loss costs not having these properties have an illogical relation to risk.

Audit:

- A. Prepare graphic representation of loss costs by zip code. Provide statewide, by region, and major population centers.
- B. For land friction, provide a color-coded map by zip code of friction for Florida and identify low, average, and high loss costs. Be prepared to call up loss costs for selected zip codes in Florida.

5.4.8 Deductibles and Policy Limits

Purpose: For a given wind speed and structure type, a range of possible damages result, each with varying degrees of probability. Some damages may fall completely below the deductible. The distribution of damage is therefore important to the determination of the effects of deductibles and policy limits.

A modeler that does not comply with this standard may not be determined to be acceptable to provide loss costs with deductibles and policy limits.

Deductibles are important because very large deductibles were approved for use by the Legislature during the 1996 Legislative Session.

Audit: The company actuary will be asked to attest to the actuarial soundness of the procedure. To the extent that historical data is used to develop mathematical depictions of contents functions, be prepared to demonstrate the goodness of fit of the data to fitted models as per standard 5.6.2.

5.4.9 Contents

Purpose: Some policies cover contents only (called tenants policies) and some policies provide no contents coverage at all (called fire and extended coverage policies). Condominium policies have an increased emphasis on contents. A reasonable representation of contents losses is necessary in order to address these types of policies.

Audit: The company actuary will be asked to attest to the actuarial soundness of the procedure. To the extent that historical data is used to develop mathematical depictions of contents functions, be prepared to demonstrate the goodness of fit of the data to fitted models as per standard 5.6.2.

5.4.10 Additional Living Expenses (ALE)

Purpose: Some policies do not cover additional living expense. A reasonable representation of additional living expense losses is necessary in order to address these types of policies.

Audit: The company actuary will be asked to attest to the actuarial soundness of the procedure. Also, be prepared to document, discuss, and justify the following during the on-site review:

- A. The method of derivation and data upon which the ALE vulnerability function is based;
- B. Validation data specifically applicable to ALE;
- C. Assumptions regarding the coding of ALE losses by insurers;
- D. For Andrew, be prepared to quantify and discuss the effects of demand surge on ALE;
- E. Assumptions regarding the variability of ALE by size of property;
- F. Statewide application of ALE assumptions;
- G. Assumptions regarding ALE for mobile homes, tenants, and condominium exposure; and
- H. Logical relation to contents, especially contents vs. ALE for condominiums.

To the extent that historical data is used to develop mathematical depictions of ALE functions, be prepared to demonstrate the goodness of fit of the data to fitted models as per standard 5.6.2.

5.4.11 Building Codes

Purpose: Building code quality and enforcement may have an important effect on the losses incurred in a hurricane. In addition to assessing the risk of loss due to a hurricane, the recognition of building code quality and enforcement may promote loss control. Since building codes and enforcement vary regionally, the recognition of these factors may have an important impact on loss costs by location.

It is difficult, however, to objectively measure building code quality and enforcement, particularly over time. Insurance Services Office's program for assessing building code quality and enforcement, called BCEGS (Building Code Effectiveness Grading Schedule), is a rating scheme applicable mostly to new construction.

Audit: Be prepared to document building code assumptions and data sources, where appropriate. To the extent that historical data is used to develop mathematical depictions of building code functions, be prepared to demonstrate the goodness of fit of the data to fitted models as per standard 5.6.2.

5.4.12 Hazard Mitigation

Audit: The hazard mitigation factors used must be based on sound actuarial, engineering, and statistical procedures. To the extent that historical data is used to develop mathematical depictions of hazard mitigation functions, be prepared to demonstrate the goodness of fit of the data to fitted models as per standard 5.6.2.

5.4.13 Replication of Known Hurricane Losses

Purpose: Each model should demonstrate that it can reasonably replicate past known events for storm frequency and severity. The meteorological standards assess the model's storm frequency projections and storm tracks. This standard applies to severity or the combined effects of wind field, vulnerability functions, and insurance loss limitations.

Given a past storm event and a book of insured properties at the time of the storm, the model should be able to provide expected losses. The validity of the model will be assessed by comparing expected losses produced by the model to actual observed losses incurred by insurers at both the state and county level. A number of storms should be examined and unusual results should be explained.

To the extent possible, each of the three functions of wind field, vulnerability, and insurance should be separately tested and verified.

It is important that the stochastic part of the model be tested, which is the part of the model used to produce loss costs used in rate making.

- Audit:
- A. Provide the following for each insurer and hurricane:
 - 1. The version of the model used to calculate modeled losses for each storm provided;
 - 2. For each storm, a general description of the data and its source;
 - 3. A disclosure of any material mismatch of exposure and loss data problems, or other material consideration. For each storm, the date of the exposures used for modeling and the date of the hurricane;
 - 4. An explanation of differences in the actual and modeled storm parameters;
 - 5. A listing of the departures, if any, in the wind field applied to a particular hurricane for the purpose of validation and the wind field used in the model under consideration;
 - 6. The type of property used in each storm to address:
 - a. Personal versus commercial
 - b. Residential structures
 - c. Mobile homes
 - d. Condominiums
 - e. Buildings only
 - f. Contents only
 - 7. For each example, the inclusion of demand surge, storm surge, loss adjustment expenses, or law and ordinance coverage in the actual losses, or the modeled losses.
 - B. Have the following documentation available for on-site review:
 - 1. Provide a copy of the publicly available documentation that you plan to provide to the Commission;
 - 2. A listing of all data sources excluded from validation and the reasons for excluding the data from review by the Commission (if any);
 - 3. An analysis that identifies and explains anomalies observed in the validation data;

4. For Andrew, be prepared to quantify and discuss the effects of demand surge; and
 5. User input sheets for each insurer and hurricane detailing specific assumptions made with regard to exposed property.
- C. Use confidence intervals per standard 5.6.3 to gauge the comparison between historical and modeled losses.

5.4.14 Comparison of Estimated Hurricane Loss Costs

Comment: The FSBA will provide FHCF aggregate personal residential exposure data to the modelers.

Audit: Be prepared to discuss and justify the following during the on-site review:

- A. Meteorological parameters;
- B. The effect of by-passing storms;
- C. The effect of actual storms that have two landfalls impacting Florida;
- D. The departures, if any, from the wind field, vulnerability functions, or insurance functions applied to the actual hurricanes for the purposes of this test and those used in the model under consideration;
- E. Exposure assumptions;
- F. Identify and explain any unusual results;
- G. Use confidence intervals per standard 5.6.3 to gauge the comparison between historical and modeled losses;
- H. The zero deductible statewide loss for each hurricane in the Official Storm Set; and
- I. The zero deductible loss by zip code for Hurricane Andrew.

5.4.15 Output Ranges

Audit: Be prepared to discuss and justify the following during the on-site review:

1. Changes from prior submission of greater than ten percent in maximum or minimum loss costs for any county.
2. Changes from prior submission in the relativity between loss costs for buildings and the corresponding loss costs for contents.
3. Changes from prior submission in the relativities among corresponding deductible amounts for the same coverage.

5.4.16 County Level Aggregation

- Purpose:** Sample size consideration is an issue in many statistical applications and simulating estimated loss costs is not an exception. The intent of this standard is to ensure that sufficient runs of the simulation have been made and a suitable sampling design invoked so that the contribution to the error of the loss cost estimates due to its probabilistic nature is negligible.
- Audit:** Provide a graph assessing the accuracy associated with low impact areas such as Nassau County. Assess where appropriate, the contribution of simulation uncertainty via confidence intervals per standard 5.6.3.

5.4.17 Total Estimated Losses

- Audit:** Be prepared to discuss, in detail, the model output total estimated losses produced in accordance with the instructions for producing Form B in Module 3, Section VII.
- Be prepared to discuss, in detail, the model output loss costs produced in accordance with the instructions for producing Form D in Module 3, Section VII.

5.5 Computer Standards

5.5.1 Primary Document Binder

- Purpose:** There are many binders associated with the computer standards and they should be available through a hierarchical referencing scheme. This provides a logical order to all computer-related documentation.
- Audit:** We will audit all aspects of the submission. Modeler personnel, or their designated proxies, responsible for each aspect of the software (i.e. user interface, quality assurance, engineering, actuarial) shall be present at the break-out meeting when the computer standards are being audited.

5.5.2 Requirements

- Purpose:** Software development begins with a thorough specification of requirements. Requirements are frequently documented informally in natural language, with the addition of diagrams and other illustrations that aid both users and software engineers in specifying the control parameters for the software product and process. Example requirements categories, along with sample requirements are:

1. **Interface:** Use the web browser Internet Explorer, with ActiveX technology, to show county and zip code maps of Florida. Allow text search commands for browsing and locating counties.
2. **Human Factors:** Zip code boundaries, and contents, can be scaled to the extent that the average user can visually identify residential home exposures marked with small circles.
3. **Functionality:** Make the software design at the topmost level a dataflow graph containing the following components: STORMS, WIND FIELD, DAMAGE, and COST. Write the low-level code in Java.
4. **Documentation:** Use Acrobat PDF for the layout language, and add PDF hyperlinks in documents to connect the sub-documents.
5. **Data:** Use a relational database, with an underlying XML schema.
6. **Human Resources:** Task individuals for the six-month coding of the wind field simulation. Ask others to design the user-interface by working with the Quality Assurance team.
7. **Security:** Store tapes off-site, with incremental daily backups. Password-protect all source files.
8. **Quality Assurance:** Filter insurance company data against norms and extremes that we created for the last project.

Audit: We will ask modelers for the requirements specifications documentation and review onsite.

5.5.3 Software Architecture and Component Design

Purpose: Component-based design is essential in creating software that reduces errors and promotes comprehension of the role for each component. Moreover, the component network needs to be shown to operate “as a whole”. Example components include STORMS, WIND FIELD, DAMAGE, and COST, etc. The purpose of each example component is, as follows:

1. STORMS accepts historical storm sets and generates historical and stochastic storm trajectories;
2. WIND FIELD accepts the output from STORMS and site-specific winds;
3. DAMAGE accepts the output of WIND FIELD and generates damage to structure; and
4. COST accepts the output from DAMAGE and generates loss costs.

Audit: All codes will be designed in diagrams that depict the flow of data and control. Other synonyms for “component” are module, function, plug-in, or object. In all cases, a component has a clear input/output interface. The idea of interacting components with flows extending from one component to another came about in systems theory and engineering and was extended to software engineering. While the standards do not dictate programming paradigm, they require that the top-level design of the code is in an aggregate form that references common components such as STORMS, WIND FIELD, DAMAGE, and COST.

All custodians or their designated proxies must be available at the time of audit.

5.5.4 Implementation

Purpose: A high-level graphical view of a program promotes understanding and maintenance. Such views are achievable, regardless of programming paradigm. All compositions will be made clear through explicit textual or interactively supported reference within each graphical component. For example, if component X subdivides into Y and Z where Y feeds into Z, then there will be a clear trace from X to the (Y,Z) network. This is accomplished in hardcopy media using text or interactively through human-computer interaction.

Audit: Each of the components in 5.5.3 is refined into subcomponents, and at the end of the component “tree” we find blocks of code. All documentation and binder identifications will be referenced within this tree. This creates a traceable design from aggregate components down to the code level.

5.5.5 Software Verification

Purpose: It is critical to verify that the code is producing correct output. Invariants are one method of achieving verification, where one brackets a block of code to ensure that data values do not stray from their required ranges. Other methods of verification should include hand-calculations or parallel coding efforts (using a different language or tool, but with the same requirements).

Audit: Some compilers will contain the ability to declare logical assertions. For those compilers without this capability, one can create “if-statements” with the appropriate flag. Assertions as to “what should be true” at specific points in the code aids in producing correct code.

5.5.6 Testing

Purpose: Testing is a fundamental type of verification. Each component will be tested with full disclosure of test results. This testing is identical to tests that are done in engineering, where for example a sub-component part is tested by itself prior to its insertion into a larger component.

Audit: To test the whole, unit testing is required on each of the parts. When each part is verified as working on an independent basis, then the parts can be combined together to create the final program. Tests should be run by varying component inputs to ensure correct output. To the extent that component inputs are varied according to sensitivity and uncertainty analyses, provide this material to the Professional Team for review.

5.5.7 Software Maintenance and Revision

Purpose: Once the software is constructed, it is essential to use software to track and maintain all source code. Many available packages exist to support this activity.

Audit: Software maintenance includes a written and implemented policy for backup procedures. There are numerous software applications that aid the programming in source revision and control. Even if there are very few programmers, such an approach is necessary to track changes and ensure a quality software engineering process.

5.5.8 User Documentation

Purpose: In some cases, a user may be offsite, and in others, the users are in the modeling company. In either case, clearly written documentation is necessary to maintain the consistency and survivability of the code, independent of specific modeler personnel.

Audit: We will talk to users of the software, including those familiar with the code as well as those who use the code without any knowledge of its components or their internal interfaces.

5.6 Statistics Standards

5.6.1 Use of Historical Data

Purpose: Many aspects of model development and implementation involve fitting a probability distribution to historical data for use in generating stochastic storms. Such fitted models should be checked to ensure that the distribution representation is reasonable on statistical grounds. A maximum likelihood fit may be the best

estimation method available, but if the fit is poor, the distribution choice may be inappropriate. Graphical depictions of the parametric data with the fitted parametric curve gives a direct assessment. Numerical assessments such as goodness-of-fit tests can also be useful.

Audit: Although the chi-square goodness-of-fit test is a commonly used procedure, there are more powerful (rigorous) tests available. Either the Kolmogorov-Smirnov (with relevant adjustments for parameter estimation) or Cramer-von Mises tests should be applied using a reasonable significance level. The Commission does not consider the chi-square goodness-of-fit test to be a rigorous methodology for demonstrating the reasonableness of models of historical data.

5.6.2 Comparison of Historical and Modeled Results

Purpose: For situations where the modeled data are a complex output of the storm generations (such as in the production of stochastic storm set landfall frequencies by coastal segment), a classical goodness-of-fit test could be used to assess the consistency. Most but not all modelers have the above information available in the course of the Professional Team audit against the standards and the modules. This standard very explicitly requires the modelers to have the results of data fitting with probability distributions available for the model assessments. Also, this standard forces the production of statistical summaries by the modeler in advance of an audit (which could have the desirable effect in a self-audit of identifying potential problem areas).

5.6.3 Uncertainty Characterization

Audit: Note that confidence limits could be used for distribution parameter limits and prediction limits could be used for situations in which future values are envisaged.

5.6.4 Sensitivity Analysis for Model Output

Purpose: All modelers do at least some one-factor-at-a-time sensitivity analyses. One-factor-at-a-time variation is known to be notoriously inefficient, is certain to be deficient in detecting interactions among input effects, ignores possible correlations among input parameters, and does not lead to an understanding of how the input parameters jointly affect the model output. The simultaneous variation of the input parameters will be an important diagnostic tool for the modelers and will provide needed assurance of the robustness and viability of the model output.

5.6.5 Uncertainty Analysis for Model Output

Purpose: Modelers have traditionally quantified the magnitude of the output and characterized the uncertainty in the output. Sensitivity analyses goes beyond mere quantification of the magnitude by identifying and quantifying the input variables that impact the magnitude of the output when the input variables are varied simultaneously. Uncertainty analysis does the same thing; however, the input variables identified in a sensitivity analysis are not necessarily the same as those in an uncertainty analysis nor are they necessarily in the same relative order. Identification of those variables that contribute to the uncertainty is the first step that can lead to a reduction in the uncertainty in the output. As with sensitivity analysis, uncertainty analysis will be an important diagnostic tool for the modelers and will provide needed assurance of the robustness and viability of the model output.

Audit: Although some modelers may use parameters as synonyms for input variables, the latter terminology is preferred here.

VIII. FUTURE INQUIRIES OR INVESTIGATIONS

Future Inquiries or Investigations

The Commission finds that since its activities are ongoing, it is appropriate to set out, as it did at the end of its previous year of inquiry and investigation, a list of matters which the Commission determines are subjects for further inquiry and investigation. This list is not intended to be all-inclusive. The Commission anticipates that other matters will be added as they are identified. The Commission also notes that these matters as set out below imply no particular order of importance and no particular order regarding timing.

Commercial Residential Property

(Note: Report was provided to the FCHLPM)

The Commission asked the Professional Team to address the issue relating to the inclusion of commercial residential property in the modeling process and asked them to obtain information during their next on-site reviews and provide input for consideration of possible standards.

Wind-related Construction Classifications

(Note: Report was provided to the FCHLPM)

The Commission asked the Professional Team to work toward improvement of the standards by building on the current construction classifications, to make them more hurricane-related rather than fire-related.

Radius of Hurricane Force Winds

The Professional Team will continue its efforts to assess the extent to which modeled storms match the observed radius of hurricane force winds. At present, no modeler explicitly includes a parameter or parameters to capture this characteristic directly. However, in the assessment of models, it is reasonable to consider the modeled wind field and the extent of its agreement with the region of hurricane force winds.

IX. APPENDICES

Florida Statutes, 2001

627.0628 Florida Commission on Hurricane Loss Projection Methodology--

- (1) LEGISLATIVE FINDINGS AND INTENT.--
- (a) Reliable projections of hurricane losses are necessary in order to assure that rates for residential property insurance meet the statutory requirement that rates be neither excessive nor inadequate. The ability to accurately project hurricane losses has been enhanced greatly in recent years through the use of computer modeling. It is the public policy of this state to encourage the use of the most sophisticated actuarial methods to assure that consumers are charged lawful rates for residential property insurance coverage.
 - (b) The Legislature recognizes the need for expert evaluation of computer models and other recently developed or improved actuarial methodologies for projecting hurricane losses, in order to resolve conflicts among actuarial professionals, and in order to provide both immediate and continuing improvement in the sophistication of actuarial methods used to set rates charged to consumers.
 - (c) It is the intent of the Legislature to create the Florida Commission on Hurricane Loss Projection Methodology as a panel of experts to provide the most actuarially sophisticated guidelines and standards for projection of hurricane losses possible, given the current state of actuarial science. It is the further intent of the Legislature that such standards and guidelines must be used by the State Board of Administration in developing reimbursement premium rates for the Florida Hurricane Catastrophe Fund, and may be used by insurers in rate filings under s. 627.062 unless the way in which such standards and guidelines were applied by the insurer was erroneous, as shown by a preponderance of the evidence.
 - (d) It is the intent of the Legislature that such standards and guidelines be employed as soon as possible, and that they be subject to continuing review thereafter.
- (2) COMMISSION CREATED.--
- (a) There is created the Florida Commission on Hurricane Loss Projection Methodology, which is assigned to the State Board of Administration. The commission shall be administratively housed within the State Board of Administration, but it shall independently exercise the powers and duties specified in this section.
 - (b) The commission shall consist of the following 11 members:
 - 1. The Insurance Consumer Advocate.
 - 2. The Chief Operating Officer of the Florida Hurricane Catastrophe Fund.
 - 3. The Executive Director of the Residential Property and Casualty Joint Underwriting Association.

4. The Director of the Division of Emergency Management of the Department of Community Affairs.
 5. The actuary member of the Florida Hurricane Catastrophe Fund Advisory Council.
 6. Six members appointed by the Insurance Commissioner, as follows:
 - a. An employee of the Department of Insurance who is an actuary responsible for property insurance rate filings.
 - b. An actuary who is employed full time by a property and casualty insurer which was responsible for at least 1 percent of the aggregate statewide direct written premium for homeowner's insurance in the calendar year preceding the member's appointment to the commission.
 - c. An expert in insurance finance who is a full time member of the faculty of the State University System and who has a background in actuarial science.
 - d. An expert in statistics who is a full time member of the faculty of the State University System and who has a background in insurance.
 - e. An expert in computer system design who is a full time member of the faculty of the State University System.
 - f. An expert in meteorology who is a full time member of the faculty of the State University System and who specializes in hurricanes.
- (c) Members designated under subparagraphs (b)1.-5. shall serve on the commission as long as they maintain the respective offices designated in subparagraphs (b)1.-5. Members appointed by the Insurance Commissioner under subparagraph (b)6. shall serve on the commission until the end of the term of office of the Insurance Commissioner who appointed them, unless earlier removed by the Insurance Commissioner for cause. Vacancies on the commission shall be filled in the same manner as the original appointment.
 - (d) The State Board of Administration shall annually appoint one of the members of the commission to serve as chair.
 - (e) Members of the commission shall serve without compensation, but shall be reimbursed for per diem and travel expenses pursuant to s. 112.061.
 - (f) The State Board of Administration shall, as a cost of administration of the Florida Hurricane Catastrophe Fund, provide for travel, expenses, and staff support for the commission.
 - (g) There shall be no liability on the part of, and no cause of action of any nature shall arise against, any member of the commission, any member of the State Board of Administration, or any employee of the State Board of Administration for any action taken in the performance of their duties under this section. In addition, the commission may, in writing, waive any potential cause of action for the negligence of a consultant, contractor, or contract employee engaged to assist the commission.

- (3) ADOPTION AND EFFECT OF STANDARDS AND GUIDELINES.--
- (a) The commission shall consider any actuarial methods, principles, standards, models, or output ranges that have the potential for improving the accuracy of or reliability of the hurricane loss projections used in residential property insurance rate filings. The commission shall, from time to time, adopt findings as to the accuracy or reliability of particular methods, principles, standards, models, or output ranges.
 - (b) In establishing reimbursement premiums for the Florida Hurricane Catastrophe Fund, the State Board of Administration must, to the extent feasible, employ actuarial methods, principles, standards, models, or output ranges found by the commission to be accurate or reliable.
 - (c) With respect to a rate filing under s. 627.062, an insurer may employ actuarial methods, principles, standards, models, or output ranges found by the commission to be accurate or reliable to determine hurricane loss factors for use in a rate filing under s. 627.062, which findings and factors are admissible and relevant in consideration of a rate filing by the department or in any arbitration or administrative or judicial review.
 - (d) The commission shall adopt revisions to previously adopted actuarial methods, principles, standards, models, or output ranges at least annually.

History.--s. 6, ch. 95-276; s. 6, ch. 96-194; s. 3, ch.97-55; s.4, ch.2000-333.

Meeting Schedule and Topics of Discussion

1995

July 14 -	Organizational Meeting
August 10 -	Discussion of the Problem
August 24 -	Discussion on Our Mission, Goals and Objectives
September 7 -	Meeting with Modelers
September 21 -	Development of Work Plan
October 5 -	Canceled Due to Hurricane Opal
October 19 -	Development of Descriptive Criteria and Tests of the Model
November 2 -	The Evaluation Process
November 16 -	Meeting with Modelers to provide input for the Evaluation Process
November 30 -	Adoption of Initial Standards and Guidelines

1996

January 8 -	Review of Modeler Responses for Modules 1 and 2
January 29 -	Comparison of Models
February 12 -	Tests and Evaluations
February 26 -	Tests and Evaluations B Continued
April 1 -	Professional Team Report
April 15 -	Module 3 Phase 2 Test Results
April 19 -	AIR Presentation
April 20 -	EQECAT Presentation
April 26 -	Tillinghast Presentation
April 27 -	RMS Presentation
May 6 -	Committee Meetings B Session 1 Adopting Standards
May 20 -	Committee Meetings B Session 2 Adopting Standards
June 3 -	Adopting a Specification of Acceptable Computer Models or Output Ranges
August 26 -	Planning and Update as to Modeler Progress
November 13 -	Vulnerability Standards Committee Meeting
December 11 -	Actuarial Standards Committee Meeting

1997

February 7 -	Review of Standards and Procedures Vulnerability Standards Committee Meeting
April 11 -	Review of AIR Model
May 6 -	Meteorology Standards Committee Meeting
May 7 -	General Standards Committee Meeting
May 16 -	Review of AIR Model (Continued) Computer Standards Committee Meeting

May 22 -	Vulnerability Standards Committee Conference Call
May 29 -	Review of AIR Model (Continued) and Adoption of Revised Standards for 1997
September 29 -	Planning for Calendar Year and Review of Models
October 23 -	Vulnerability Committee Meeting
October 24-	Review of AIR Model
December 11 -	Review of EQECAT Model
December 12 -	Review of EQECAT Model (Continued)
December 16 -	Review of RMS Model
1998	
April 23 -	Acceptability Process Committee Meeting Computer Programming Committee Meeting Meteorological Standards Committee Meeting Actuarial Standards Committee Meeting
April 24 -	Vulnerability Standards Committee Meeting General Standards Committee Meeting 1998 Standards Adopted
May 21 -	Module and Acceptability Process Adopted
November 17 -	Review of Tillinghast Model
November 18 -	Review of Tillinghast Model (Continued)
November 19 -	Review of E.W. Blanch Model
November 20 -	Review of E.W. Blanch Model (Continued)
December 8 -	Review of RMS Model
December 9 -	Review of EQECAT Model
December 10 -	Review of AIR Model
1999	
March 19 -	Commission Workshop New Timeframe for Model Review
July 15 -	Acceptability Process Committee Meeting General Standards Committee Meeting Vulnerability Standards Committee Meeting
July 16 -	Actuarial Standards Committee Meeting Computer Standards Committee Meeting
July 28 -	Meteorology Standards Committee Meeting
August 17 -	Adoption of Standards for 1999, Modules, Acceptability Process, Findings and "Report of Activities"
2000	
March 15 -	Discussion of Model Submissions and Determination of On-Site Reviews
May 9 -	Review of AIR Model – Suspended Consideration; E.W. Blanch and RMS Models Determined Acceptable under the 1999 Standards

May 10 - EQE Model Determined Acceptable under the 1999 Standards; Review of Risk Engineering Model

May 11 - Review of Risk Engineering Model (Continued) – Suspended Consideration

May 12 - Review of AIR Model (Continued) – Postponement Approved

July 25 - Review of ARA Model

July 26 - ARA Model Determined Acceptable under the 1999 Standards

July 27 - Committee Meetings

July 28 - Committee Meetings (Continued); AIR Model Determined Acceptable under the 1999 Standards

Sept 14 - Adoption of 2000 Standards and Report of Activities

Sept 15 - Adoption of 2000 Standards and Report of Activities (Continued)

2001

March 27 - Discussion of Model Submissions and Determination of On-Site Reviews

May 10 - EQE and E.W. Blanch Models Determined Acceptable under the 2000 Standards

May 11 - AIR and ARA Models Determined Acceptable under the 2000 Standards

July 30 - RMS Model Determined Acceptable under the 2000 Standards; Committee Meetings

July 31 - Committee Meetings (Continued)

Sept 19 - Adoption of 2001 Standards and Report of Activities

Oct 15 - Adoption of 2001 Standards and Report of Activities (Continued)

Transcript Information

All meetings of the Florida Commission on Hurricane Loss Projection Methodology were transcribed by a Court Reporter. The meetings were not put on videotape or audiotape. If you would like to purchase copies of any transcript, contact the Court Reporter for the date of the meeting.

July 14, 1995 -	Amy Gonter, Habershaw Reporting Service, 850-385-9426
August 10, 1995 -	Amy Gonter, Habershaw Reporting Service, 850-385-9426
August 24, 1995 -	Sue Habershaw, Habershaw Reporting Service, 850-385-9426
September 7, 1995 -	Sue Habershaw, Habershaw Reporting Service, 850-385-9426
September 21, 1995 -	Nancy Vetterick, Accurate Stenotype Reporters, Inc. 850-878-2221
October 19, 1995 -	Christine Wheeler, Habershaw Reporting Service, 850-385-9426
November 2, 1995 -	Cathy Webster, C & N Reporters, 850-926-2020
November 16, 1995 -	Cathy Webster, C & N Reporters, 850-926-2020
November 30, 1995 -	Lori Dezell, Kirkland & Associates, 850-222-8390
January 8, 1996 -	Cathy Webster, C & N Reporters, 850-926-2020
January 29, 1996 -	Cathy Webster, C & N Reporters, 850-926-2020
February 12, 1996 -	Cathy Webster, C & N Reporters, 850-926-2020
February 26, 1996 -	Cathy Webster, C & N Reporters, 850-926-2020
April 1, 1996 -	Cathy Webster, C & N Reporters, 850-926-2020
April 15, 1996 -	Cathy Webster, C & N Reporters, 850-926-2020
April 19, 1996 -	Cathy Webster, C & N Reporters, 850-926-2020
April 20, 1996 -	Cathy Webster, C & N Reporters, 850-926-2020
April 26, 1996 -	Cathy Webster, C & N Reporters, 850-926-2020
April 27, 1996 -	Cathy Webster, C & N Reporters, 850-926-2020
May 6, 1996 -	Cathy Webster, C & N Reporters, 850-926-2020
May 20, 1996 -	Cathy Webster, C & N Reporters, 850-926-2020
June 3, 1996 -	Nancy Metzke, C & N Reporters, 850-926-2020
August 26, 1996 -	Cathy Webster, C & N Reporters, 850-926-2020
November 13, 1996 -	Cathy Webster, C & N Reporters, 850-926-2020
December 11, 1996 -	Cathy Webster, C & N Reporters, 850-926-2020
February 7, 1997 -	Cathy Webster, C & N Reporters, 850-926-2020
April 11, 1997 -	Cathy Webster, C & N Reporters, 850-926-2020
May 6, 1997 -	Nancy Metzke, C & N Reporters, 850-926-2020
May 7, 1997 -	Lisa G. Eslinger, C & N Reporters, 850-926-2020
May 16, 1997 -	Cathy Webster, C & N Reporters, 850-926-2020
May 22, 1997 -	Cathy Webster, C & N Reporters, 850-926-2020
May 29, 1997 -	Nancy Metzke, C & N Reporters, 850-926-2020
September 29, 1997 -	Lisa Girod Jones, Registered Merit Reporter, 850-894-2277
October 23, 1997 -	Cathy Webster, C & N Reporters, 850-926-2020

October 24, 1997 - Cathy Webster, C & N Reporters, 850-926-2020
 December 11, 1997 - Nancy Metzke, C & N Reporters, 850-926-2020
 December 12, 1997 - Nancy Metzke, C & N Reporters, 850-926-2020
 December 16, 1997 - Nancy Metzke, C & N Reporters, 850-926-2020
 April 23, 1998 - Nancy Metzke, C & N Reporters, 850-926-2020
 April 24, 1998 - Nancy Metzke, C & N Reporters, 850-926-2020
 May 21, 1998 - Cathy Webster, C & N Reporters, 850-926-2020
 November 17, 1998 - Cathy Webster, C & N Reporters, 850-926-2020
 November 18, 1998 - Cathy Webster, C & N Reporters, 850-926-2020
 November 19, 1998 - Cathy Webster, C & N Reporters, 850-926-2020
 November 20, 1998 - Cathy Webster, C & N Reporters, 850-926-2020
 December 8, 1998 - Cathy Webster, C & N Reporters, 850-926-2020
 December 9, 1998 - Nancy Metzke, C & N Reporters, 850-697-8314
 December 10, 1998 - Cathy Webster, C & N Reporters, 850-926-2020
 March 19, 1999 - Cathy Webster, C & N Reporters, 850-926-2020
 July 15, 1999 - Nancy Metzke, C & N Reporters, 850-697-8314
 July 16, 1999 - Nancy Metzke, C & N Reporters, 850-697-8314
 July 28, 1999 - Nancy Metzke, C & N Reporters, 850-697-8314
 August 17, 1999 - Debra Krick, Premier Reporting, 850-894-0828
 March 15, 2000 - Nancy Metzke, C & N Reporters, 850-697-8314
 May 9, 2000 - Nancy Metzke, C & N Reporters, 850-697-8314
 May 10, 2000 - Nancy Metzke, C & N Reporters, 850-697-8314
 May 11, 2000 - Nancy Metzke, C & N Reporters, 850-697-8314
 May 12, 2000 - Nancy Metzke, C & N Reporters, 850-697-8314
 July 25, 2000 - Nancy Metzke, C & N Reporters, 850-697-8314
 July 26, 2000 - Nancy Metzke, C & N Reporters, 850-697-8314
 July 27, 2000 - Nancy Metzke, C & N Reporters, 850-697-8314
 July 28, 2000 - Nancy Metzke, C & N Reporters, 850-697-8314
 September 14, 2000 - Nancy Metzke, C & N Reporters, 850-697-8314
 September 15, 2000 - Nancy Metzke, C & N Reporters, 850-697-8314
 March 27, 2001 - Nancy Metzke, C & N Reporters, 850-697-8314
 May 10, 2001 - Nancy Metzke, C & N Reporters, 850-697-8314
 May 11, 2001 - Nancy Metzke, C & N Reporters, 850-697-8314
 July 30, 2001 - Nancy Metzke, C & N Reporters, 850-697-8314
 July 31, 2001 - Nancy Metzke, C & N Reporters, 850-697-8314
 September 19, 2001 - Nancy Metzke, C & N Reporters, 850-697-8314
 October 15, 2001 - Mendy Martin, Catherine Wilkinson & Associates, 850-224-0127

Commission Documentation

The State Board of Administration, in its responsibility as administrator for the Commission, maintains documentation for all meetings of the Commission. This information may be obtained by writing to:

Donna Sirmons
Florida Commission on Hurricane Loss Projection Methodology
c/o State Board of Administration
P. O. Box 13300
Tallahassee, Florida 32317-3300

There is a \$.15 charge per page per Section 119.07(1)(a), Florida Statutes.

This publication is available for a charge of \$14.95.